



The imprint of
stratospheric
transport on
column-averaged
methane

A. Ostler et al.

This discussion paper is/has been under review for the journal Atmospheric Chemistry and Physics (ACP). Please refer to the corresponding final paper in ACP if available.

The imprint of stratospheric transport on column-averaged methane

A. Ostler¹, R. Sussmann¹, P. K. Patra², P. O. Wennberg³, N. M. Deutscher^{4,5},
D. W. T. Griffith⁴, T. Blumenstock⁶, F. Hase⁶, R. Kivi⁷, T. Warneke⁵, Z. Wang⁵,
M. De Mazière⁸, J. Robinson⁹, and H. Ohyama^{10,a}

¹Karlsruhe Institute of Technology, IMK-IFU, Garmisch-Partenkirchen, Germany

²Research Institute for Global Change, JAMSTEC, Yokohama, 236–0001, Japan

³California Institute of Technology, Pasadena, USA

⁴University of Wollongong, New South Wales, Wollongong, Australia

⁵Institute of Environmental Physics, University of Bremen, Bremen, Germany

⁶Karlsruhe Institute of Technology, IMK-ASF, Karlsruhe, Germany

⁷Finnish Meteorological Institute, Arctic Research Center, Sodankylä, Finland

⁸Belgian Institute for Space Aeronomy, BIRA-IASB, Brussels, Belgium

⁹National Institute of Water and Atmospheric Research, NIWA, Omakau, New Zealand

¹⁰Earth Observation Research Center, EORC, Aerospace Exploration Agency, JAXA, Tsukuba, Japan

^anow at: Solar-Terrestrial Environment Laboratory, Nagoya University, Nagoya, Japan

Title Page

Abstract

Introduction

Conclusions

References

Tables

Figures

◀

▶

◀

▶

Back

Close

Full Screen / Esc

Printer-friendly Version

Interactive Discussion



Received: 19 June 2015 – Accepted: 4 July 2015 – Published: 28 July 2015

Correspondence to: A. Ostler (andreas.ostler@kit.edu)

Published by Copernicus Publications on behalf of the European Geosciences Union.

ACPD

15, 20395–20447, 2015

**The imprint of
stratospheric
transport on
column-averaged
methane**

A. Ostler et al.

Title Page

Abstract

Introduction

Conclusions

References

Tables

Figures



Back

Close

Full Screen / Esc

Printer-friendly Version

Interactive Discussion

20396



Abstract

Model simulations of column-averaged methane mixing ratios (XCH_4) are extensively used for inverse estimates of methane (CH_4) emissions from atmospheric measurements. Our study shows that virtually all chemical transport models (CTM) used for this purpose are affected by stratospheric model-transport errors. We quantify the impact of such model transport errors on the simulation of stratospheric CH_4 concentrations via an a posteriori correction method. This approach compares measurements of the mean age of air with modeled age and expresses the difference in terms of a correction to modeled stratospheric CH_4 mixing ratios. We find age differences up to ~ 3 years yield to a bias in simulated CH_4 of up to 250 parts per billion (ppb). Comparisons between model simulations and ground-based XCH_4 observations from the Total Carbon Column Network (TCCON) reveal that stratospheric model-transport errors cause biases in XCH_4 of ~ 20 ppb in the midlatitudes and ~ 27 ppb in the arctic region. Improved overall as well as seasonal model-observation agreement in XCH_4 suggests that the proposed, age-of-air-based stratospheric correction is reasonable.

The latitudinal model bias in XCH_4 is supposed to reduce the accuracy of inverse estimates using satellite-derived XCH_4 data. Therefore, we provide an estimate of the impact of stratospheric model-transport errors in terms of CH_4 flux errors. Using a one-box approximation, we show that average model errors in stratospheric transport correspond to an overestimation of CH_4 emissions by $\sim 40\%$ ($\sim 7 \text{ Tgyr}^{-1}$) for the arctic, $\sim 5\%$ ($\sim 7 \text{ Tgyr}^{-1}$) for the northern, and $\sim 60\%$ ($\sim 7 \text{ Tgyr}^{-1}$) for the southern hemispheric mid-latitude region. We conclude that an improved modeling of stratospheric transport is highly desirable for the joint use with atmospheric XCH_4 observations in atmospheric inversions.

The imprint of stratospheric transport on column-averaged methane

A. Ostler et al.

Title Page

Abstract

Introduction

Conclusions

References

Tables

Figures

◀

▶

◀

▶

Back

Close

Full Screen / Esc

Printer-friendly Version

Interactive Discussion



1 Introduction

The global budget of CH₄ is driven by emissions from the Earth's surface and chemical loss in the atmosphere. While the dominant sink due to hydroxyl radicals (OH) is commonly regarded as stable over a long time period (Montzka et al., 2011), the sources of CH₄ exhibit high variability in their spatial and temporal distribution (Dlugokencky et al., 2009; Nisbet et al., 2014). Methane emissions are estimated by top-down approaches on the basis of chemical transport models (CTMs) constrained by atmospheric measurements. Required a priori information about the distribution of emissions and sinks is often provided by bottom-up approaches. Both, top-down and bottom-up estimates have been used to assess and to explain changes of the global CH₄ budget in the past (Kirschke et al., 2013). Recently, top-down inversions have increasingly benefited from newly available satellite remote sensing measurements (Bergamaschi et al., 2013; Fraser et al., 2013, 2014; Monteil et al., 2013; Houweling et al., 2014; Wecht et al., 2014; Cressot et al., 2014; Alexe et al., 2015; Turner et al., 2015) covering large geographical areas where surface observation networks lack in density, such as the tropical lands. In contrast to in situ observations, mostly performed at the surface, satellite retrievals of column-averaged dry-air CH₄ mixing ratios (XCH₄) contain information about the complete CH₄ vertical distribution. The stratospheric contribution relative to the CH₄ total column only is ~ 5 % at the tropics but increases up to ~ 25 % at mid- and high latitudes. This implies that CTMs have to account for both stratospheric and tropospheric chemistry and transport when using satellite XCH₄ retrievals for optimizing fluxes. Although the modeling of stratospheric transport has been improved, it still remains a challenging task for CTMs with a focus on the simulation of tropospheric tracers such as CH₄. As a result of errors in the model transport parameterizations, stratospheric CH₄ distributions simulated by various models show significant differences, especially in the lower stratosphere (up to ~ 50 % between the models) (Patra et al., 2009b).

The imprint of stratospheric transport on column-averaged methane

A. Ostler et al.

Title Page

Abstract

Introduction

Conclusions

References

Tables

Figures

◀

▶

◀

▶

Back

Close

Full Screen / Esc

Printer-friendly Version

Interactive Discussion



The imprint of stratospheric transport on column-averaged methane

A. Ostler et al.

Title Page

Abstract

Introduction

Conclusions

References

Tables

Figures

⏪

⏩

◀

▶

Back

Close

Full Screen / Esc

Printer-friendly Version

Interactive Discussion

A clear separation between systematic model errors and systematic measurement errors is a central problem, since inversion-estimated fluxes are obtained by minimizing model-measurement residuals (Fraser et al., 2013; Houweling et al., 2014; Turner et al., 2015). Efforts to determine fluxes from satellite-derived XCH_4 have used different strategies to account for ill-defined residual biases where most of the bias corrections are based on ad hoc latitudinal functions. For example, a recent CH_4 inversion study removes a high-latitude bias by fitting a quadratic regression to the latitudinal distribution of model-measurement XCH_4 residuals (Turner et al., 2015). In this context, the latitudinal bias is attributed to errors in either the satellite observations or the modeled stratospheric CH_4 without an unambiguous assignment. This suggests, that a precise description of stratospheric model errors is needed. Therefore, the goal of this study is (i) to better understand the sensitivity of XCH_4 to the details of simulated stratospheric transport and (ii) to estimate the impact of stratospheric model-transport errors in terms of emissions.

The paper has the following structure: after introducing the models (Sect. 2) and the observations (Sect. 3), we present the stratospheric correction in Sect. 4. Results from the comparison between model and TCCON data are shown in Sect. 5. Section 6 shows that the impact of stratospheric model-transport errors on stratospheric CH_4 can be converted into CH_4 emissions. Section 7 contains a summary and conclusions.

2 Model simulations

In order to analyse the relationship between stratospheric CH_4 and stratospheric transport, we use model simulations of CH_4 and of mean age – a well-known diagnostics for stratospheric transport (Waugh and Hall, 2002).

ulated by ACTM via reactions involving OH, Cl, and O (^1D) along with recommended temperature-dependent reaction and wavelength-dependent photolysis rates (Sander et al., 2006; Patra et al., 2011).

Besides the simulation of CH_4 , ACTM provides distributions of the mean age of stratospheric air to analyze transport in the troposphere and stratosphere. Mean age is calculated as the difference between surface and upper air concentrations normalized by the concentration increase rate at the surface using a Green's function method (Hall and Plumb, 1994). The latter is estimated from the simulation of an idealized transport tracer with uniform surface fluxes, linearly increasing trend, and no loss in the atmosphere (Patra et al., 2009).

2.2 TransCOM models

The chemistry-transport model intercomparison experiment (TransCom- CH_4) is a comparison between CH_4 simulations from twelve CTMs with a special focus on the role of surface emissions, transport, and chemical loss (Patra et al., 2011). For this study we analyzed model simulations from six selected TransCom CTMs: ACTM (Patra et al., 2009a, b, 2011, 2014), GEOS-Chem (Pickett-Heaps et al., 2011; Fraser et al., 2011), LMDZ (Hourdin et al., 2006), NIES08i (Belikov et al., 2011), TM5 (Krol et al., 2005), and TOMCAT (Chipperfield, 2006). Note that the TransCom version of ACTM uses meteorological products from the National Centers for Environmental Prediction (NCEP) and hence differs from the ACTM version used in this study. We derived mean age distributions via sulfur hexafluoride (SF_6) model simulations for all CTMs. As SF_6 is a chronological tracer, stratospheric mean age was calculated as the difference between SF_6 mixing ratio at the tropical tropopause and stratospheric SF_6 mixing ratio normalized by the tropospheric growth rate of SF_6 at the tropics.

The imprint of stratospheric transport on column-averaged methane

A. Ostler et al.

Title Page

Abstract

Introduction

Conclusions

References

Tables

Figures

◀

▶

◀

▶

Back

Close

Full Screen / Esc

Printer-friendly Version

Interactive Discussion



3 Observational datasets

In addition to model simulations, observations of mean age and XCH_4 are used to evaluate both the accuracy of stratospheric model transport and the sensitivity of XCH_4 to stratospheric model transport.

3.1 Mean age

Mean age data was inferred from vertical profiles of SF_6 measured by balloon-borne cryogenic air sampler. The observed mean age dataset used in the current study consists of 7 vertical profiles of SF_6 obtained at three different locations in the Northern Hemisphere (NH) at altitudes between 17 and 37 km (see Table 1). One profile was presented in Patra et al. (1997), the remaining profiles are part of the study from Harnisch et al. (1996).

3.2 TCCON

Solar absorption measurements in the near-infrared (NIR) are performed via ground-based Fourier Transform Spectrometers (FTS) at TCCON sites across the globe. TCCON-type measurements are analyzed with the GGG software package including the spectral fitting code GFIT to derive total column abundances of several trace gases (Wunch et al., 2011). The CH_4 total column is inverted from the spectra in 3 different spectral windows centered at 5938, 6002, and 6076 cm^{-1} . The spectral fitting method is based on iteratively scaling a priori profiles to provide the best fit to the measured spectrum. The general shape of the a priori profiles has been inferred from aircraft, balloon and satellite profiles in order to provide a realistic interhemispheric gradient. In addition, the shape of the daily a priori profile is stretched vertically depending on tropopause altitude and the latitude of the measurement site. XCH_4 is calculated by dividing the CH_4 total column by the simultaneously measured dry-air pressure column.

The imprint of stratospheric transport on column-averaged methane

A. Ostler et al.

Title Page

Abstract

Introduction

Conclusions

References

Tables

Figures

◀

▶

◀

▶

Back

Close

Full Screen / Esc

Printer-friendly Version

Interactive Discussion



These XCH₄ retrievals are a posteriori corrected for known airmass-dependent biases and calibrated to account for airmass-independent biases which can among other errors arise from spectroscopic uncertainties. The airmass-independent calibration factor is determined by comparisons with coincident airborne or balloon-borne in situ measurements over TCCON sites (Wunch et al., 2010; Messerschmidt et al., 2011; Geibel et al., 2012). Although the absolute accuracy of TCCON XCH₄ retrievals is calibrated to in situ measurements on WMO scale, it can still be affected by additional systematic uncertainties. However, the quality of the retrievals is continuously improved by correcting the influence of systematic instrumental changes over time. As a result of these improvements there are different versions of the GGG software package. In this study we use TCCON retrievals performed with version GGG2014 (for details see <https://tcon-wiki.caltech.edu/>). The TCCON measurement precision for XCH₄ is ~ 0.3 % for single measurements.

TCCON data were obtained from the TCCON Data Archive, hosted by the Carbon Dioxide Information Analysis Center (CDIAC: <http://cdiac.ornl.gov/>). The individual data sets of the TCCON sites used in this study are available at this database (Blumenstock et al., 2014; Deutscher et al., 2014; Griffith et al., 2014a, b; Hase et al., 2014; Kawakami et al., 2014; Kivi et al., 2014; de Mazière et al., 2014; Sherlock et al., 2014a, b; Sussmann et al., 2014; Warneke et al., 2014; Wennberg et al., 2014a, b).

4 Stratospheric correction

Inaccurate model transport in the stratosphere implies errors in the description of stratospheric CH₄ and, hence, errors in simulated XCH₄. In order to correct these model errors, we perform a two-step correction. We first correct modeled mean age and subsequently use the corrected mean age to adjust stratospheric CH₄.

4.1 Stratospheric model-transport error

Recently, Miyamoto et al. (2013) compared ACTM-modeled age of air with ages inferred from SF₆ observations presented in Sect. 3.1. They obtained correction factors at each SF₆ profile location and interpolated these factors to all model grid cells between the equator and the North Pole. The mirror image was used for the SH. Applying the correction factors to the modeled age produces distributions of corrected age. Both the original and the corrected model distribution of mean age correspond to climatological monthly mean distributions.

We detect stratospheric model-transport errors as the difference between original and corrected model distributions of age. Zonal annual means of original age (Fig. 1a) and corrected age (Fig. 1c), as well as the corresponding age differences (Fig. 1e) provide evidence that ACTM underestimates the age in the lower stratosphere (50–100 hPa) by up to ~ 3 years, with the magnitude of the error increasing poleward. In general, the magnitude of the modeled age is lower compared to the corrected age and the shape of age isopleths differs.

4.2 Adjustment of CH₄ simulations

To account for the impact of model-transport error on stratospheric CH₄ we applied an a posteriori correction to the modeled CH₄ mixing ratio profiles x . The correction method is based on expressing the stratospheric mixing ratio of long-lived tracers in terms of the (corrected) age of air (Γ). According to Volk et al. (1997) the following Taylor expansion can be used for chemically active tracers in the vicinity of the tropopause ($\Gamma = \Gamma_{tp}$, $x = x_{tp}$):

$$x(\Gamma) = x_0 \left[1 - \beta_0 \Gamma - \gamma_0 \Gamma + \beta_0 \gamma_0 (\Gamma^2 + 2\Delta^2) \right] \quad (1)$$

The imprint of stratospheric transport on column-averaged methane

A. Ostler et al.

Title Page

Abstract

Introduction

Conclusions

References

Tables

Figures

◀

▶

◀

▶

Back

Close

Full Screen / Esc

Printer-friendly Version

Interactive Discussion



5.1 Global effects in XCH₄

Figure 2a shows that the overall bias between ACTM and TCCON in the NH increases with latitude. At subtropical sites (Izaña, Lamont), the bias is 10.2 ppb; at mid-latitude sites (Karlsruhe, Garmisch, Park Falls, Orléans, Białystok), the bias is ~ 25 ppb. The bias increases up to ~ 36.7 ppb at high latitudes (Sodankylä). In contrast, at tropical sites (Darwin, Reunion), we find a negative bias (−11.5, −6.6 ppb). In the Southern Hemisphere (SH), the bias at the subtropical site Wollongong (−2.0 ppb) and the mid-latitude site Lauder (−8.1 ppb) is smaller compared to the NH. The biases at all mid-latitude sites as well as at the high-latitude site are significant on 2σ confidence level.

Regarding the high values of the bias in the NH (the region with the majority of anthropogenic emissions), one might conjecture that this latitude-dependent bias is caused by emissions not correctly considered in the a priori flux distribution of the model. However, such biases for ACTM simulation and in situ measurements are not observed in the troposphere (Saito et al., 2013). Instead, the bias is much smaller between ACTMac and TCCON XCH₄ (typically < 10 ppb) meaning that most of the error is due to poor description of stratospheric CH₄ in ACTM. With ACTMac, there is no significant bias at mid-latitude and arctic TCCON sites (the accuracy of TCCON is estimated to be ~ 4 ppb; Wunch et al., 2010). Only in the SH at the tropical site Reunion (−10.3 ppb) and the subtropical site Wollongong (−11.5 ppb) we still find significant negative biases.

The overall impact of the stratospheric model-transport error on XCH₄ is illustrated by the difference of the biases derived from ACTM and ACTMac, respectively (Fig. 2c). The bias difference increases from ~ 1 ppb at the tropical site Darwin up to ~ 27 ppb at the arctic site Sodankylä. It is obvious that the latitude-dependent error originates from the latitude-dependent age differences, which created latitude-dependent differences between the modeled CH₄ distributions, i.e., ACTM – ACTMac (Fig. 1).

The imprint of stratospheric transport on column-averaged methane

A. Ostler et al.

Title Page

Abstract

Introduction

Conclusions

References

Tables

Figures

◀

▶

◀

▶

Back

Close

Full Screen / Esc

Printer-friendly Version

Interactive Discussion



neous model prior emissions. Apart from that, the improved model-observation agreement as a result of the stratospheric correction is also confirmed by a climatological comparison of stratospheric CH₄ derived from model simulations and stratospheric satellite observations (see Appendix C).

Finally, the latitude-dependent impact of model errors in stratospheric transport on XCH₄ is twofold: it is determined by the magnitude of the model bias in stratospheric CH₄ as well as by the magnitude of the stratospheric airmass (tropopause height). As both contributions depend on latitude, the impact of stratospheric model-transport errors on XCH₄ is increasing poleward. Moreover, the stratospheric model-transport errors depend on season with maximum in winter-time and minimum in summer.

6 Impact of stratospheric model-transport errors on global CH₄ budget

Stratospheric model-transport errors are not unique to ACTM: we also analyzed stratospheric transport for five other well-established CTMs (Sect. 2.2) and found that these CTMs are affected by a similar latitude-dependent transport error (Figs. D1 and D2). After validating the correction of stratospheric model transport, we now estimate the impact of the poor description of stratospheric CH₄ in a CTM on inverting CH₄ fluxes for the assumption that no ad hoc latitudinal bias correction would be applied to account for the latitudinal XCH₄ bias between model-observation residuals. The model CH₄ distribution is converted into a global CH₄ burden [CH₄]. The stratospheric correction yields a burden difference [ΔCH₄] between global burdens from the original and the corrected CTM. A change in the global burden corresponds to a change, Δ*E*, in the source strength assuming a constant sink. Consequently we quantify the impact of the stratospheric error in terms of emissions, Δ*E*, using a one-box model for the whole atmosphere (Dlugokencky et al., 1998). The annual CH₄ source strength (*E*) was derived according to

$$E = d[\text{CH}_4]/dt + [\text{CH}_4]/\tau, \quad (3)$$

20409

ACPD

15, 20395–20447, 2015

The imprint of stratospheric transport on column-averaged methane

A. Ostler et al.

Title Page

Abstract

Introduction

Conclusions

References

Tables

Figures

◀

▶

◀

▶

Back

Close

Full Screen / Esc

Printer-friendly Version

Interactive Discussion



The imprint of stratospheric transport on column-averaged methane

A. Ostler et al.

Title Page

Abstract

Introduction

Conclusions

References

Tables

Figures

◀

▶

◀

▶

Back

Close

Full Screen / Esc

Printer-friendly Version

Interactive Discussion



where $d[\text{CH}_4]/dt$ is the increase of $[\text{CH}_4]$ and τ is the mean atmospheric CH_4 lifetime. At steady-state, the emission E balances the sink $[\text{CH}_4]/\tau$, since there is no change in the global burden ($d[\text{CH}_4]/dt = 0$). On the other hand, a perturbation of the global budget corresponds to a change, ΔE , in the source strength assuming a constant sink. We calculated ΔE using a perturbation of the global burden that is equal to $[\Delta\text{CH}_4]$. In other words, we changed the global burden by the amount of the stratospheric correction ($d[\text{CH}_4]/dt = [\Delta\text{CH}_4]\text{yr}^{-1}$). According to this procedure, we derived flux adjustments for ACTM and for five additional CTMs.

Figure 4 shows zonal contributions of ΔE aggregated for 30° latitude bands and averaged over two years. Assuming realistic prior emissions, stratospheric model-transport errors yield to an overestimation of emissions by 3.2–11.1 Tgyr^{-1} for the NH arctic region ($60\text{--}90^\circ\text{N}$), 5.2–11.7 Tgyr^{-1} for the NH midlatitudes ($30\text{--}60^\circ\text{N}$), and 3.4–13.1 Tgyr^{-1} for the SH midlatitudes ($30\text{--}60^\circ\text{S}$), relative to the tropics. Mean flux errors are $\sim 7 \text{ Tgyr}^{-1}$ for each of these three latitudinal bands, and accumulate to $\sim 21 \text{ Tgyr}^{-1}$ on total global scale.

We use two inversion-estimated distributions of emission adjustments (Alexe et al., 2015: S1-NOAA and S1-GOSAT-SRON-PX) to evaluate the significance of these flux errors, see grey and black bars in Fig. 4. One of these inversions uses surface measurements from the Cooperative Air Sampling Network of the National Oceanic and Atmospheric Administration Earth System Research Laboratory (NOAA ESRL) only. The second inversion uses both surface measurements from NOAA ESRL and satellite total column observations from the Thermal And Near infrared Sensor for carbon Observations–Fourier Transform Spectrometer (TANSO-FTS) instrument on board the Greenhouse Gases Observing SATellite (GOSAT). In addition to inversion-estimated flux adjustments we also compared inversion-estimated total emissions with flux errors in order to assess the level of significance for the flux errors: these total emission are small for the arctic region (S1-NOAA: 17.6 Tgyr^{-1}) and for the SH midlatitudes (S1-NOAA: 11.6 Tgyr^{-1}) compared to NH mid-latitude total emissions (S1-NOAA: 156.2 Tgyr^{-1}).

The imprint of stratospheric transport on column-averaged methane

A. Ostler et al.

Title Page

Abstract

Introduction

Conclusions

References

Tables

Figures

◀

▶

◀

▶

Back

Close

Full Screen / Esc

Printer-friendly Version

Interactive Discussion

correspond to an overestimation of CH₄ emissions by 40 % ($\sim 7 \text{ Tgyr}^{-1}$) in the NH arctic region, by $\sim 5\%$ ($\sim 7 \text{ Tgyr}^{-1}$) in the NH midlatitudes, and by $\sim 60\%$ ($\sim 7 \text{ Tgyr}^{-1}$) in the SH midlatitudes. Assessing these flux errors does not imply that inverted emission estimates are affected by such errors, since inversion studies try to remove systematic error sources, like latitudinal XCH₄ biases between model and satellite data, before inverting CH₄ fluxes.

Overall, the comparison between ACTM simulations and atmospheric CH₄ observations suggests that our stratospheric correction is reasonable, although it does not explicitly account for interannual variability in stratospheric transport and only is based on a small observational dataset of mean age (7 SF₆ profiles at three locations). However, as long as modeled and corrected mean age datasets are consistent in temporal resolution, errors from missing interannual variations in stratospheric transport should cancel each other. We expect, that extending the observational dataset of mean age with additional measurements will contribute to a refined stratospheric correction and, thus, is favorable for future applications. E.g., satellite-inferred age of air data are available for long-term analysis of stratospheric model transport including interannual and seasonal variations (Stiller et al., 2012).

In summary, our results imply three important shortcomings in atmospheric inversions using satellite-derived XCH₄. First, satellite-based emission estimates at mid- and high latitudes can be affected by systematic flux errors of $\sim 7 \text{ Tgyr}^{-1}$ on average, if latitudinal bias corrections are not included. These flux errors are in the same order of magnitude as flux differences between satellite-inferred and surface-inferred inversions (Monteil et al., 2013; Alexe et al., 2015). Second, our results indicate that inaccurate stratospheric model transport causes unrealistic emission adjustments by an inversion which tries to consistently interpret constraints on satellite-derived column-averaged mixing ratios and in situ measurements of surface mixing ratios at the same time (Monteil et al., 2013). Third, residuals between model and satellite XCH₄ contain latitude-dependent contributions due to errors in stratospheric model transport superimposed on residuals caused by real atmospheric signals. As long as the stratospheric

model bias has not been quantified, latitudinal ad hoc bias corrections can obscure real signals inferred from satellite observations.

We expect that these shortcomings in inversions can be alleviated by the correction of stratospheric model transport. In addition, the potential of mean age observations as diagnostic and modality for stratospheric model errors is not limited to CH₄, but can also be exploited for other long-lived greenhouse gases like carbon dioxide (CO₂) or nitrous oxide (N₂O). In this context, we conclude that an improved description of the stratospheric column will help to clarify discrepancies between CO₂ flux estimates inferred from surface and satellite observations (Basu et al., 2013; Deng et al., 2014; Chevallier et al., 2014). It also is likely, that improved stratospheric modeling can give new insights into an ongoing debate about the inversion-estimated European uptake of CO₂ (Reuter et al., 2014; Feng et al., 2015).

Our findings suggest that an accurate representation of the stratosphere is essential in order to determine source/sink information from the inversion of satellite total column observations. An alternative to separate tropospheric and stratospheric contributions from XCH₄ has been presented for ground-based observations (Washenfelder et al., 2003), but is not applicable for satellite observations at the moment without additional use of a CTM. It is obvious, that the best solution to the model bias in stratospheric methane is to improve the representation of the stratosphere. This is a reasonable goal, as a realistic simulation of stratospheric transport has already been achieved by models focused on stratospheric tracers (Strahan et al., 2011). However, for atmospheric inversions, the age correction proposed here can act as a solution at an intermediate stage between currently used ad hoc bias corrections and accurate modeling of stratospheric CH₄ in the future.

Apart from that, the stratospheric correction via mean age can be beneficial for satellite or ground-based retrieval methods; i.e. improved stratospheric a priori information from CTMs will result in enhanced retrieval accuracy. Finally, this study again reveals the synergistic potential of combining CTMs with high-precision measurements.

The imprint of stratospheric transport on column-averaged methane

A. Ostler et al.

Title Page

Abstract

Introduction

Conclusions

References

Tables

Figures

◀

▶

◀

▶

Back

Close

Full Screen / Esc

Printer-friendly Version

Interactive Discussion



Appendix A: Details of the stratospheric correction

As explained in Sect. 4.2, the correction of stratospheric CH₄ mixing ratios has three contributions: chemical loss, tropospheric growth, and interaction of chemistry and growth. These individual contributions are illustrated in Fig. A1, using original and corrected ACTM model profiles of CH₄ mixing ratios extracted for the TCCON site Garmisch. It is obvious that the predominant part of the correction for a chemically-active trace gas such as CH₄ originates from the chemical loss term with CH₄ adjustments up to ~ 150 ppb in the lower stratosphere. The contribution caused by tropospheric growth is typically lower than 20 ppb throughout the whole stratosphere. In contrast to the contributions from chemical loss and tropospheric growth, the amount of the mixed chemistry-growth term is monotonically increasing from ~ 20 ppb in the lower stratosphere up to ~ 90 ppb in the upper stratosphere.

The correction of ACTM stratospheric CH₄ is not constant with time, but shows a seasonal component due to seasonal varying differences between simulated and corrected age. Latitude-height distributions of age and CH₄ reveal that the correction effect has a maximum in winter-time and a minimum in summer (Fig. A2).

Appendix B: Supplement figures

Impact of stratospheric model-transport errors on mean seasonal variations of XCH₄ (see Fig. B1).

Appendix C: Comparison of stratospheric CH₄ between ACTM and satellite data

For the validation of the stratospheric model correction we also used two stratospheric CH₄ climatologies which have been inferred from observations of the Halogen Occultation Experiment (HALOE) on board the Upper Atmosphere Research Satellite (UARS) and of the Atmospheric Chemistry Experiment–Fourier Transform Spectrometer (ACE-

The imprint of stratospheric transport on column-averaged methane

A. Ostler et al.

Title Page

Abstract

Introduction

Conclusions

References

Tables

Figures

◀

▶

◀

▶

Back

Close

Full Screen / Esc

Printer-friendly Version

Interactive Discussion

FTS) aboard the Canadian Science Satellite (SciSat). Both satellite instruments utilize solar occultation geometry to obtain vertical profiles of several trace gases including CH_4 . The HALOE climatology is derived from measurements covering a period of 11 years (1991–2002), the ACE-FTS climatology is based on observations performed between 2004 and 2009. Both climatologies are provided as zonal monthly mean distributions (Jones et al., 2012; Grooß and Russell, 2005). Comparisons between ACE-FTS and correlative HALOE profiles have revealed that ACE-FTS profiles are biased positive ($\sim 5\%$ up to 35 km; $\sim 15\%$ up to 60 km) with respect to HALOE (de Mazière et al., 2008). A comparison between a vertical CH_4 profile from ACT-FTS and from balloon-borne measurements showed biases that are smaller than $\pm 10\%$ between 15 and 24 km (de Mazière et al., 2008). The agreement of HALOE profiles with correlative measurements was found to be better than 15% (Park et al., 1996).

For comparison with satellite-inferred climatologies we used zonally-averaged monthly mean distributions of ACTM, and ACTMac, respectively. Modeled CH_4 distributions from the years 2008 and 2009 were averaged for each month and subsequently compared with the climatological monthly mean distributions from HALOE and ACE-FTS. As the HALOE climatology is representative for the 1990s, we have to account for the tropospheric growth. I.e. the modeled CH_4 distributions are adjusted by an offset corresponding to the increase in global CH_4 between the ACTM time period (2008, 2009) and the HALOE climatology period. As the period between 1999 and 2006 does not show significant growth, we account for 6 years of tropospheric growth with a rate of 7 ppbyr^{-1} (42 ppb in total; see ref. 40 for tropospheric growth rate). Due to the small time lag between model and ACE-FTS climatology, the impact of tropospheric growth on model-satellite comparison can be neglected.

Zonal differences between model and satellite climatology were calculated as a function of altitude and month. Subsequently, these zonal differences were used to derive the mean difference (bias) and the residual standard deviation (RSD). Furthermore, we calculated the standard deviation of the individual CH_4 distributions (ACTM, ACTMac, and satellite) in order to use it as a proxy for modeled and observed atmospheric

The imprint of stratospheric transport on column-averaged methane

A. Ostler et al.

Title Page

Abstract

Introduction

Conclusions

References

Tables

Figures

◀

▶

◀

▶

Back

Close

Full Screen / Esc

Printer-friendly Version

Interactive Discussion

methane emissions inferred from SCIAMACHY, TANSO-FTS, IASI and surface measurements, *Atmos. Chem. Phys.*, 14, 577–592, doi:10.5194/acp-14-577-2014, 2014.

De Mazière, M., Vigouroux, C., Bernath, P. F., Baron, P., Blumenstock, T., Boone, C., Brogniez, C., Catoire, V., Coffey, M., Duchatelet, P., Griffith, D., Hannigan, J., Kasai, Y., Kramer, I., Jones, N., Mahieu, E., Manney, G. L., Piccolo, C., Randall, C., Robert, C., Senten, C., Strong, K., Taylor, J., Tétard, C., Walker, K. A., and Wood, S.: Validation of ACE-FTS v2.2 methane profiles from the upper troposphere to the lower mesosphere, *Atmos. Chem. Phys.*, 8, 2421–2435, doi:10.5194/acp-8-2421-2008, 2008.

De Mazière, M., Desmet, F., Hermans, C., Scolas, F., Kumps, N., Metzger, J.-M., Duflo, V., and Cammas, J.-P.: TCCON data from Reunion Island (La Reunion), France, Release GGG2014R0, TCCON data archive, hosted by the Carbon Dioxide Information Analysis Center, Oak Ridge National Laboratory, Oak Ridge, Tennessee, USA, doi:10.14291/tcon.ggg2014.reunion01.R0/1149288, 2014.

Deng, F., Jones, D. B. A., Henze, D. K., Bousseres, N., Bowman, K. W., Fisher, J. B., Nassar, R., O'Dell, C., Wunch, D., Wennberg, P. O., Kort, E. A., Wofsy, S. C., Blumenstock, T., Deutscher, N. M., Griffith, D. W. T., Hase, F., Heikkinen, P., Sherlock, V., Strong, K., Sussmann, R., and Warneke, T.: Inferring regional sources and sinks of atmospheric CO₂ from GOSAT XCO₂ data, *Atmos. Chem. Phys.*, 14, 3703–3727, doi:10.5194/acp-14-3703-2014, 2014.

Deutscher, N., Notholt, J., Messerschmidt, J., Weinzierl, C., Warneke, T., Petri, C., Gruppe, P., and Katrynski, K.: TCCON data from Bialystok, Poland, Release GGG2014R0, TCCON data archive, hosted by the Carbon Dioxide Information Analysis Center, Oak Ridge National Laboratory, Oak Ridge, Tennessee, USA, doi:10.14291/tcon.ggg2014.bialystok01.R0/1149277, 2014

Dlugokencky, E. J., Masarie, K. A., Lang, P. M., and Tans, P. P.: Continuing decline in the growth rate of the atmospheric methane burden, *Nature*, 393, 447–450, 1998.

Dlugokencky, E. J., Bruhwiler, L., White, J. W. C., Emmons, L. K., Novelli, P. C., Montzka, S. A., Masarie, K. A., Lang, P. M., Crotwell, A. M., Miller, J. B., and Gatti, L. V.: Observational constraints on recent increases in the atmospheric CH₄ burden, *Geophys. Res. Lett.*, 36, L18803, doi:10.1029/2009GL039780, 2009.

Engel, A., Mobius, T., Bonisch, H., Schmidt, U., Heinz, R., Levin, I., Atlas, E., Aoki, S., Nakazawa, T., Sugawara, S., Moore, F., Hurst, D., Elkins, J., Schauffler, S., Andrews, A., and

The imprint of stratospheric transport on column-averaged methane

A. Ostler et al.

Title Page

Abstract

Introduction

Conclusions

References

Tables

Figures

◀

▶

◀

▶

Back

Close

Full Screen / Esc

Printer-friendly Version

Interactive Discussion

Chevallier, F., Feng, L., Fraser, A., Heimann, M., Hodson, E. L., Houweling, S., Josse, B., Fraser, P. J., Krummel, P. B., Lamarque, J. F., Langenfelds, R. L., Le Quere, C., Naik, V., O'Doherty, S., Palmer, P. I., Pison, I., Plummer, D., Poulter, B., Prinn, R. G., Rigby, M., Ringeval, B., Santini, M., Schmidt, M., Shindell, D. T., Simpson, I., Spahni, R., Steele, L. P., Strode, S. A., Sudo, K., Szopa, S., van der Werf, G. R., Voulgarakis, A., van Weele, M., Weiss, R. F., Williams, J. E., and Zeng, G.: Three decades of global methane sources and sinks, *Nat. Geosci.*, 6, 813–823, doi:10.1038/ngeo1955, 2013.

Kivi, R., Heikkinen, P., and Kyro, E.: TCCON data from Sodankyla, Finland, Release GGG2014R0, TCCON data archive, hosted by the Carbon Dioxide Information Analysis Center, Oak Ridge National Laboratory, Oak Ridge, Tennessee, USA, doi:10.14291/tcccon.ggg2014.sodankyla01.R0/1149280, 2014.

Krol, M., Houweling, S., Bregman, B., van den Broek, M., Segers, A., van Velthoven, P., Peters, W., Dentener, F., and Bergamaschi, P.: The two-way nested global chemistry-transport zoom model TM5: algorithm and applications, *Atmos. Chem. Phys.*, 5, 417–432, doi:10.5194/acp-5-417-2005, 2005.

Mahieu, E., Chipperfield, M. P., Notholt, J., Reddmann, T., Anderson, J., Bernath, P. F., Blumenstock, T., Coffey, M. T., Dhomse, S. S., Feng, W., Franco, B., Froidevaux, L., Griffith, D. W. T., Hannigan, J. W., Hase, F., Hossaini, R., Jones, N. B., Morino, I., Murata, I., Nakajima, H., Palm, M., Paton-Walsh, C., Russell III, J. M., Schneider, M., Servais, C., Smale, D., and Walker, K. A.: Recent Northern Hemisphere stratospheric HCl increase due to atmospheric circulation changes, *Nature*, 515, 104–107, doi:10.1038/nature13857, 2014.

Messerschmidt, J., Geibel, M. C., Blumenstock, T., Chen, H., Deutscher, N. M., Engel, A., Feist, D. G., Gerbig, C., Gisi, M., Hase, F., Katrynski, K., Kolle, O., Lavrič, J. V., Notholt, J., Palm, M., Ramonet, M., Rettinger, M., Schmidt, M., Sussmann, R., Toon, G. C., Truong, F., Warneke, T., Wennberg, P. O., Wunch, D., and Xueref-Remy, I.: Calibration of TCCON column-averaged CO₂: the first aircraft campaign over European TCCON sites, *Atmos. Chem. Phys.*, 11, 10765–10777, doi:10.5194/acp-11-10765-2011, 2011.

Miyamoto, Y., Inoue, M., Morino, I., Uchino, O., Yokota, T., Machida, T., Sawa, Y., Matsueda, H., Sweeney, C., Tans, P. P., Andrews, A. E., and Patra, P. K.: Atmospheric column-averaged mole fractions of carbon dioxide at 53 aircraft measurement sites, *Atmos. Chem. Phys.*, 13, 5265–5275, doi:10.5194/acp-13-5265-2013, 2013.

Monteil, G., Houweling, S., Butz, A., Guerlet, S., Schepers, D., Hasekamp, O., Frankenberg, C., Scheepmaker, R., Aben, I., and Röckmann, T.: Comparison of CH₄ inversions based on 15

The imprint of stratospheric transport on column-averaged methane

A. Ostler et al.

Title Page

Abstract

Introduction

Conclusions

References

Tables

Figures

◀

▶

◀

▶

Back

Close

Full Screen / Esc

Printer-friendly Version

Interactive Discussion

months of GOSAT and SCIAMACHY observations, *J. Geophys. Res.-Atmos.*, 118, 11807–11823, doi:10.1002/2013JD019760, 2013.

Montzka, S. A., Krol, M., Dlugokencky, E., Hall, B., Jockel, P., and Lelieveld, J.: Small interannual variability of global atmospheric hydroxyl, *Science*, 331, 67–69, doi:10.1126/science.1197640, 2011.

Nisbet, E. G., Dlugokencky, E. J., and Bousquet, P.: Methane on the rise – again, *Science*, 343, 493–495, doi:10.1126/science.1247828, 2014.

Olivier, J. G. J. and Berdowski, J. J. M.: Global emissions sources and sinks, in: *The Climate System*, edited by: Berdowski, J., Guicherit, R., and Heij, B. J., A. A. Balkema Publishers/Swets and Zeitlinger Pub., Lisse, the Netherlands, 33–78, ISBN 9058092550, 2001.

Patra, P., Lal, S., Subbaraya, B., Jackman, C. H., and Rajaratnam, P.: Observed vertical profile of sulfur hexafluoride (SF₆) and its atmospheric applications, *J. Geophys. Res.*, 102, 8855–8859, 1997.

Patra, P. K., Takigawa, M., Dutton, G. S., Uhse, K., Ishijima, K., Lintner, B. R., Miyazaki, K., and Elkins, J. W.: Transport mechanisms for synoptic, seasonal and interannual SF₆ variations and “age” of air in troposphere, *Atmos. Chem. Phys.*, 9, 1209–1225, doi:10.5194/acp-9-1209-2009, 2009a.

Patra, P. K., Takigawa, M., Ishijima, K., Choi, B.-C., Cunnold, D., Dlugokencky, E. J., Fraser, P., Gomez-Pelaez, A. J., Goo, T.-Y., Kim, J.-S., Krummel, P., Langenfelds, R., Meinhardt, F., Mukai, H., O’Doherty, S., Prinn, R. G., Simmonds, P., Steele, P., Tohjima, Y., Tsuboi, K., Uhse, K., Weiss, R., Worthy, D., and Nakazawa, T.: Growth rate, seasonal, synoptic, diurnal variations and budget of methane in lower atmosphere, *J. Meteorol. Soc. Jpn.*, 87, 635–663, 2009b.

Patra, P. K., Houweling, S., Krol, M., Bousquet, P., Belikov, D., Bergmann, D., Bian, H., Cameron-Smith, P., Chipperfield, M. P., Corbin, K., Fortems-Cheiney, A., Fraser, A., Gloor, E., Hess, P., Ito, A., Kawa, S. R., Law, R. M., Loh, Z., Maksyutov, S., Meng, L., Palmer, P. I., Prinn, R. G., Rigby, M., Saito, R., and Wilson, C.: TransCom model simulations of CH₄ and related species: linking transport, surface flux and chemical loss with CH₄ variability in the troposphere and lower stratosphere, *Atmos. Chem. Phys.*, 11, 12813–12837, doi:10.5194/acp-11-12813-2011, 2011.

Patra, P. K., Krol, M. C., Montzka, S. A., Arnold, T., Atlas, E. L., Lintner, B. R., Stephens, B. B., Xiang, B., Elkins, J. W., Fraser, P. J., Ghosh, A., Hints, E. J., Hurst, D. F., Ishijima, K., Krummel, P. B., Miller, B. R., Miyazaki, K., Moore, F. L., Mühle, J., O’Doherty, S., Prinn, R. G.,

The imprint of stratospheric transport on column-averaged methane

A. Ostler et al.

Title Page

Abstract

Introduction

Conclusions

References

Tables

Figures

◀

▶

◀

▶

Back

Close

Full Screen / Esc

Printer-friendly Version

Interactive Discussion

the Carbon Dioxide Information Analysis Center, Oak Ridge National Laboratory, Oak Ridge, Tennessee, USA, doi:10.14291/tccon.ggg2014.lauder02.R0/1149298, 2014b.

Spivakovsky, C., Logan, J. A., Montzka, S. A., Balkanski, Y. J., Foreman-Fowler, M., Jones, D. B. A., Horowitz, L. W., Fusco, A. C., Brenninkmeijer, C. A. M., Prather, M. J., Wofsy, S. C., McElroy, M. B.: Three-dimensional climatological distribution of tropospheric OH: update and evaluation, *J. Geophys. Res.*, 105, 8931–8980, 2000.

Stiller, G. P., von Clarmann, T., Haenel, F., Funke, B., Glatthor, N., Grabowski, U., Kellmann, S., Kiefer, M., Linden, A., Lossow, S., and López-Puertas, M.: Observed temporal evolution of global mean age of stratospheric air for the 2002 to 2010 period, *Atmos. Chem. Phys.*, 12, 3311–3331, doi:10.5194/acp-12-3311-2012, 2012.

Strahan, S., Douglass, A., Stolarski, E., Akiyoshi, H., Bekki, S., Braesicke, P., Butchart, N., Chipperfield, M. P., Cugnet, D., Dhomse, S., Frith, S. M., Gettelman, A., Hardiman, S. C., Kinnison, D. E., Lamarque, J. F., Mancini, E., Marchand, M., Michou, M., Morgenstern, O., Nakamura, T., Olivie, D., Pawson, S., Pitari, G., Plummer, D. A., Pyle, J. A., Scinocca, J. F., Shepherd, T. G., Shibata, K., Smale, D., Teyssedre, H., Tian, W., and Yamashita, Y.: Using transport diagnostics to understand chemistry climate model ozone simulations, *J. Geophys. Res.*, 116, D17302, doi:10.1029/2010JD015360, 2011.

Sussmann, R., Forster, F., Rettinger, M., and Bousquet, P.: Renewed methane increase for five years (2007–2011) observed by solar FTIR spectrometry, *Atmos. Chem. Phys.*, 12, 4885–4891, doi:10.5194/acp-12-4885-2012, 2012.

Sussmann, R. and Rettinger, M.: TCCON data from Garmisch, Germany, Release GGG2014R0, TCCON data archive, hosted by the Carbon Dioxide Information Analysis Center, Oak Ridge National Laboratory, Oak Ridge, Tennessee, USA, doi:10.14291/tccon.ggg2014.garmisch01.R0/1149299, 2014.

Takigawa, M., Takahashi, M., and Akiyoshi, H.: Simulation of ozone and other chemical species using a Center for climate system research/national institute for environmental studies atmospheric GCM with coupled stratospheric chemistry, *J. Geophys. Res.*, 104, 14003–14018, doi:10.1029/1998JD100105, 1999.

Turner, A. J., Jacob, D. J., Wecht, K. J., Maasackers, J. D., Lundgren, E., Andrews, A. E., Biraud, S. C., Boesch, H., Bowman, K. W., Deutscher, N. M., Dubey, M. K., Griffith, D. W. T., Hase, F., Kuze, A., Notholt, J., Ohyama, H., Parker, R., Payne, V. H., Sussmann, R., Sweeney, C., Velazco, V. A., Warneke, T., Wennberg, P. O., and Wunch, D.: Estimating global

The imprint of stratospheric transport on column-averaged methane

A. Ostler et al.

Title Page

Abstract

Introduction

Conclusions

References

Tables

Figures

◀

▶

◀

▶

Back

Close

Full Screen / Esc

Printer-friendly Version

Interactive Discussion

and North American methane emissions with high spatial resolution using GOSAT satellite data, *Atmos. Chem. Phys.*, 15, 7049–7069, doi:10.5194/acp-15-7049-2015, 2015.

Volk, C. M., Elkins, J. W., Fahey, D. W., Dutton, G. S., Gilligan, J. M., Loewenstein, M., Podolske, J. R., Chan, K. R., and Gunson, M. R.: Evaluation of source gas life-times from stratospheric observations, *J. Geophys. Res.-Atmos.*, 102, 25543–25564, doi:10.1029/97JD02215, 1997.

Warneke, T., Messerschmidt, J., Notholt, J., Weinzierl, C., Deutscher, N., Petri, C., Gruppe, P., Vuillemin, C., Truong, F., Schmidt, M., Ramonet, M., and Parmentier, E.: TCCON data from Orleans, France, Release GGG2014R0, TCCON data archive, hosted by the Carbon Dioxide Information Analysis Center, Oak Ridge National Laboratory, Oak Ridge, Tennessee, USA, doi:10.14291/tccon.ggg2014.orleans01.R0/1149276, 2014.

Washenfelder, R. A., Wennberg, P. O., and Toon, G. C.: Tropospheric methane retrieved from ground-based near-IR solar absorption spectra, *Geophys. Res. Lett.*, 30, 2226, doi:10.1029/2003GL017969, 2003.

Waugh, D. W. and Hall, T. M., Age of stratospheric air: theory, observations, and models, *Rev. Geophys.*, 40, 1010, doi:10.1029/2000RG000101, 2002.

Wecht, K. J., Jacob, D. J., Frankenberg, C., Jiang, Z., and Blake, D. R.: Mapping of North American methane emissions with high spatial resolution by inversion of SCIAMACHY satellite data, *J. Geophys. Res.-Atmos.*, 119, 7741–7756, doi:10.1002/2014JD021551, 2014.

Wennberg, P. O., Wunch, D., Roehl, C., Blavier, J.-F., Toon, G. C., Allen, N., Dorell, P., Teske, K., Martin, C., and Martin, J.: TCCON data from Lamont, Oklahoma, USA, Release GGG2014R0, TCCON data archive, hosted by the Carbon Dioxide Information Analysis Center, Oak Ridge National Laboratory, Oak Ridge, Tennessee, USA, doi:10.14291/tccon.ggg2014.lamont01.R0/1149159, 2014a.

Wennberg, P. O., Roehl, C., Wunch, D., Toon, G. C., Blavier, J.-F., Washenfelder, R., Keppel-Aleks, G., Allen, N., and Ayers, J.: TCCON data from Park Falls, Wisconsin, USA, Release GGG2014R0, TCCON data archive, hosted by the Carbon Dioxide Information Analysis Center, Oak Ridge National Laboratory, Oak Ridge, Tennessee, USA, doi:10.14291/tccon.ggg2014.parkfalls01.R0/1149161, 2014b.

Wunch, D., Toon, G. C., Wennberg, P. O., Wofsy, S. C., Stephens, B. B., Fischer, M. L., Uchino, O., Abshire, J. B., Bernath, P., Biraud, S. C., Blavier, J.-F. L., Boone, C., Bowman, K. P., Browell, E. V., Campos, T., Connor, B. J., Daube, B. C., Deutscher, N. M., Diao, M., Elkins, J. W., Gerbig, C., Gottlieb, E., Griffith, D. W. T., Hurst, D. F., Jiménez, R., Keppel-

Aleks, G., Kort, E. A., Macatangay, R., Machida, T., Matsueda, H., Moore, F., Morino, I., Park, S., Robinson, J., Roehl, C. M., Sawa, Y., Sherlock, V., Sweeney, C., Tanaka, T., and Zondlo, M. A.: Calibration of the total carbon column observing network using aircraft profile data, *Atmos. Meas. Tech.*, 3, 1351–1362, doi:10.5194/amt-3-1351-2010, 2010.

- 5 Wunch, D., Toon, G. C., Blavier, J.-F. L., Washenfelder, R. A., Notholt, J., Connor, B. J., Griffith, D. W. T., Sherlock, V., and Wennberg, P. O.: The total carbon column observing network, *Phil. Trans. R. Soc. A*, 369, 2087–2112, doi:10.1098/rsta.2010.0240, 2011.

ACPD

15, 20395–20447, 2015

**The imprint of
stratospheric
transport on
column-averaged
methane**

A. Ostler et al.

Title Page

Abstract

Introduction

Conclusions

References

Tables

Figures

◀

▶

◀

▶

Back

Close

Full Screen / Esc

Printer-friendly Version

Interactive Discussion

The imprint of stratospheric transport on column-averaged methane

A. Ostler et al.

Title Page

Abstract

Introduction

Conclusions

References

Tables

Figures



Back

Close

Full Screen / Esc

Printer-friendly Version

Interactive Discussion



Table 1. Overview of balloon flights where SF₆ measurements were obtained to infer mean age of air data.

Balloon flight location	Latitude	Time	Altitude
Hyderabad (India)	17° N	25 Mar 1987	6–34 km
Hyderabad (India)	17° N	16 Apr 1994	8–37 km
Aire sur l'Adour (France)	44° N	30 Sep 1993	6–34 km
Esrangle (Sweden)	68° N	18 Jan 1992	6–34 km
Esrangle (Sweden)	68° N	06 Feb 1992	6–34 km
Esrangle (Sweden)	68° N	20 Mar 1992	6–34 km
Esrangle (Sweden)	68° N	07 Mar 1995	6–34 km

The imprint of stratospheric transport on column-averaged methane

A. Ostler et al.

Table 2. Overview of TCCON measurement sites used for evaluation of chemical transport model ACTM. Information on geographical location, the time period used for model-observation comparison, and the number of measurement days within the corresponding time period are provided.

TCCON site	Latitude	Longitude	Intercomparison time period	Measurements (days)
Sodankylä (Finland)	67.4° N	26.6° E	2009–2013	667
Białystok (Poland)	53.2° N	23.0° E	2009–2013	558
Karlsruhe (Germany)	49.1° N	8.4° E	2009–2013	459
Orléans (France)	48.0° N	2.1° E	2009–2013	513
Garmisch (Germany)	47.5° N	11.1° E	2008–2013	633
Park Falls (USA)	46.0° N	90.3° W	2008–2013	1258
Lamont (USA)	36.6° N	97.5° W	2008–2013	1407
Saga (Japan)	33.2° N	130.3° E	2011–2013	276
Izaña (Tenerife)	28.3° N	16.5° W	2008–2013	397
Darwin (Australia)	12.4° S	130.9° E	2008–2013	1133
Reunion (Reunion Island)	20.9° S	55.5° E	2011–2013	396
Wollongong (Australia)	34.4° S	150.9° E	2008–2013	752
Lauder (New Zealand)	45.0° S	169.7° E	2008–2013	870

Title Page

Abstract

Introduction

Conclusions

References

Tables

Figures

◀

▶

◀

▶

Back

Close

Full Screen / Esc

Printer-friendly Version

Interactive Discussion

The imprint of stratospheric transport on column-averaged methane

A. Ostler et al.

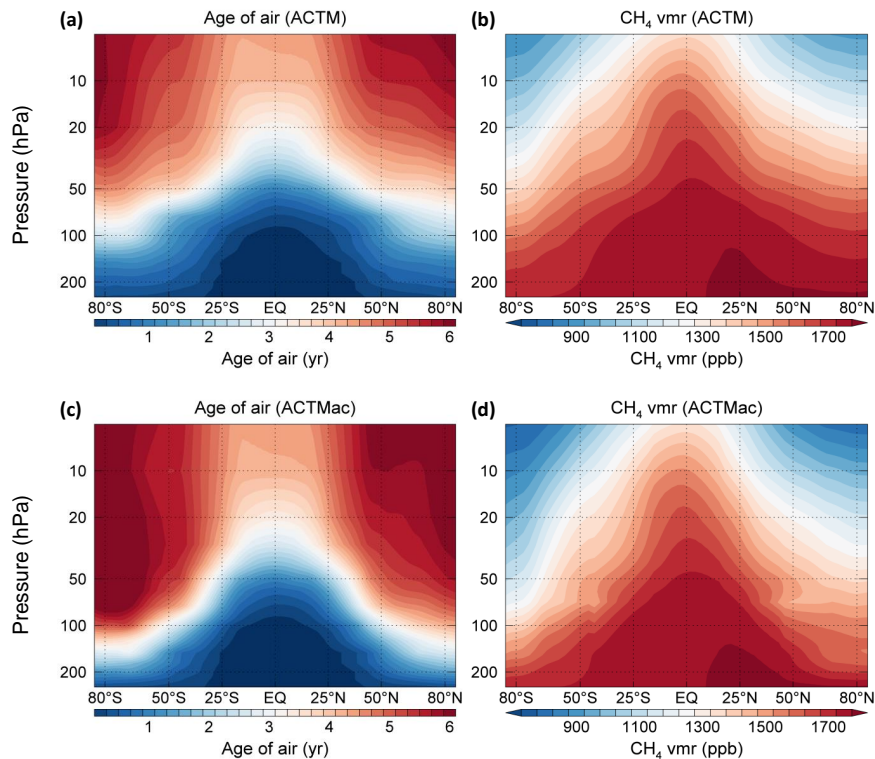


Figure 1.

[Title Page](#)[Abstract](#)[Introduction](#)[Conclusions](#)[References](#)[Tables](#)[Figures](#)[◀](#)[▶](#)[◀](#)[▶](#)[Back](#)[Close](#)[Full Screen / Esc](#)[Printer-friendly Version](#)[Interactive Discussion](#)

The imprint of stratospheric transport on column-averaged methane

A. Ostler et al.

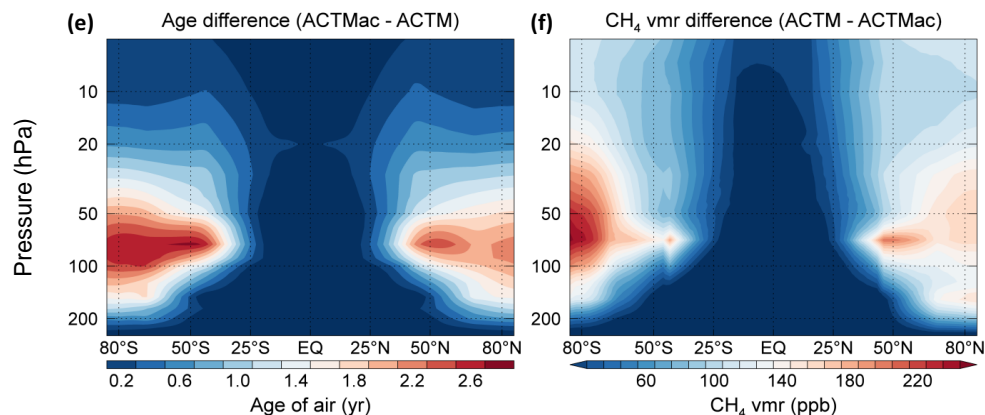


Figure 1. Impact of stratospheric transport on zonal mean distributions of CH₄. Zonal vertical distributions of mean age in years (yr) and of CH₄ volume mixing ratios (vmr) in parts per billion (ppb), respectively. Original model distributions (ACTM; **a**, **b**) were corrected to account for errors in stratospheric transport (ACTMac; **c**, **d**). The differences are shown in the lower trace (**e**, **f**). Age distributions and CH₄ distributions are annual means for the year 2009.

Title Page

Abstract

Introduction

Conclusions

References

Tables

Figures

◀

▶

◀

▶

Back

Close

Full Screen / Esc

Printer-friendly Version

Interactive Discussion

The imprint of stratospheric transport on column-averaged methane

A. Ostler et al.

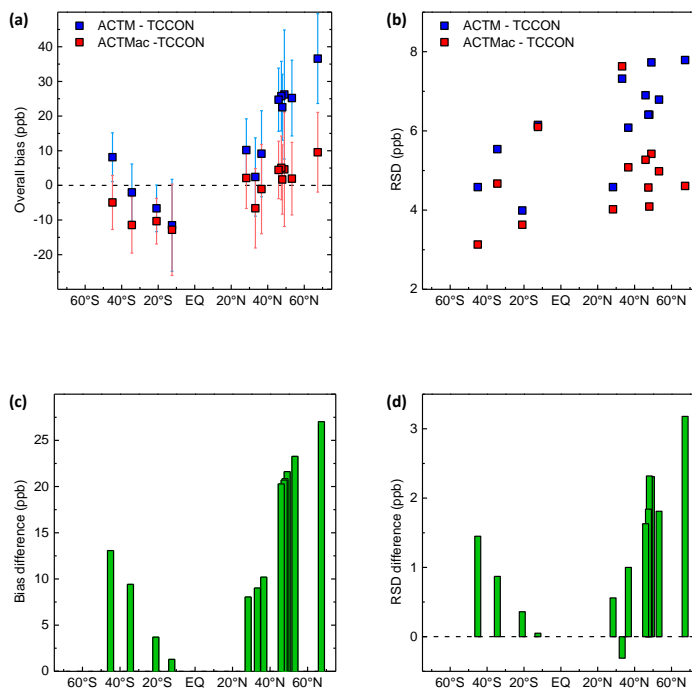


Figure 2. Impact of stratospheric transport on the overall and seasonal agreement between modeled and observed CH₄ at TCCON sites. The overall bias **(a)** is calculated from deseasonalized model-observation differences of column-averaged dry-air CH₄ mixing ratios (XCH₄) for selected TCCON sites indexed by geographical latitude. Error bars are 2σ standard deviations. The residual standard deviation (RSD) **(b)** is calculated from detrended model-observation XCH₄ differences. The difference between bias related to ACTM, and to ACTMac is shown as bias difference **(c)**, respectively. The difference between residual standard deviations related to ACTM and to ACTMac is shown in the lower trace **(d)**; XCH₄ biases, residual standard deviations, and corresponding differences in parts per billion (ppb).

The imprint of stratospheric transport on column-averaged methane

A. Ostler et al.

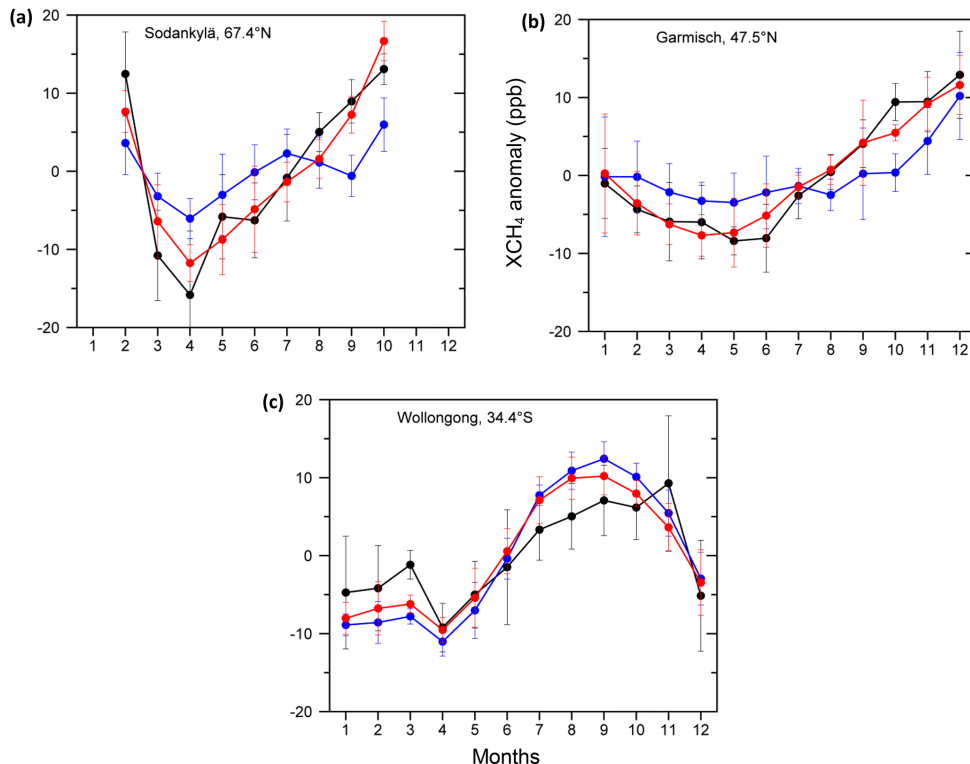


Figure 3. Contribution of stratospheric transport on mean seasonal anomalies of CH_4 . Mean seasonal cycles are calculated from climatological monthly means of detrended XCH_4 time series for ACTM (blue), ACTMac (red), and TCCON (black), respectively. Error bars are 2σ standard errors; XCH_4 in parts per billion (ppb). Mean seasonal cycles are provided for arctic region (a), for midlatitudes (b), and for subtropics (c). Mean seasonal cycles from remaining TCCON sites are shown in Fig. B1.

Title Page

Abstract

Introduction

Conclusions

References

Tables

Figures

◀

▶

◀

▶

Back

Close

Full Screen / Esc

Printer-friendly Version

Interactive Discussion

The imprint of stratospheric transport on column-averaged methane

A. Ostler et al.

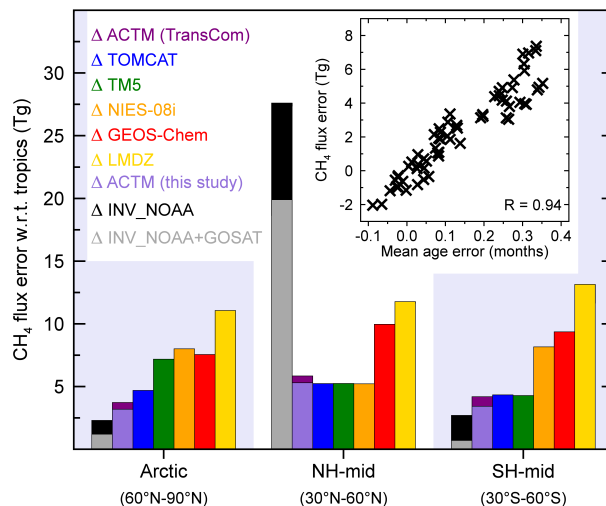


Figure 4. Impact of errors in stratospheric model transport on inverted CH₄ fluxes. Zonal CH₄ emission adjustments caused by stratospheric model-transport error for six CTMs used in the TransCom-CH₄ comparison (TM5, TOMCAT, NIES-08i, ACTM, LMDZ, GEOS-Chem), and for ACTM used in this study. In addition, two distributions of inversion-estimated emission adjustments (INV_NOAA, INV_NOAA+GOSAT; see Table 5 of Alexe et al., 2015) are provided for reference. INV_NOAA uses surface measurements only, whereas INV_NOAA+GOSAT is based on both surface and satellite observations. CH₄ emission adjustments are two-year averages (TransCom CTMs: 2006 and 2007; ACTM: 2008 and 2009; INV_NOAA and INV_NOAA+GOSAT: 2010 and 2011). The inset to Fig. 4 shows the correlation of flux errors and mean age errors relative to the tropics aggregated for 10° latitude bands (i.e. one point corresponds to one latitude band and one CTM). The age error is integrated with respect to sigma-pressure and scaled by the relative fraction of the zonal region to the total Earth surface. Note that the flux adjustments in the main figure are aggregated for 30° latitude bands because of clarity.

The imprint of stratospheric transport on column-averaged methane

A. Ostler et al.

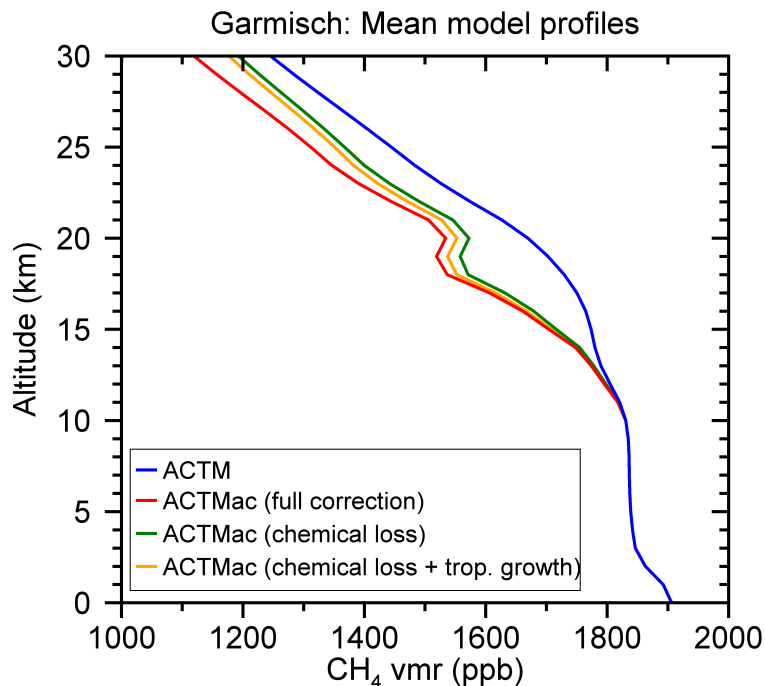


Figure A1. The impact of the individual contributions of the stratospheric transport correction on the mean CH₄ profile at Garmisch. The stratospheric correction of ACTM model simulations via mean age leads to the decline of stratospheric CH₄ due to three contributions: chemical loss, tropospheric growth, and interaction of chemistry and growth.

Title Page

Abstract

Introduction

Conclusions

References

Tables

Figures

◀

▶

◀

▶

Back

Close

Full Screen / Esc

Printer-friendly Version

Interactive Discussion

The imprint of stratospheric transport on column-averaged methane

A. Ostler et al.

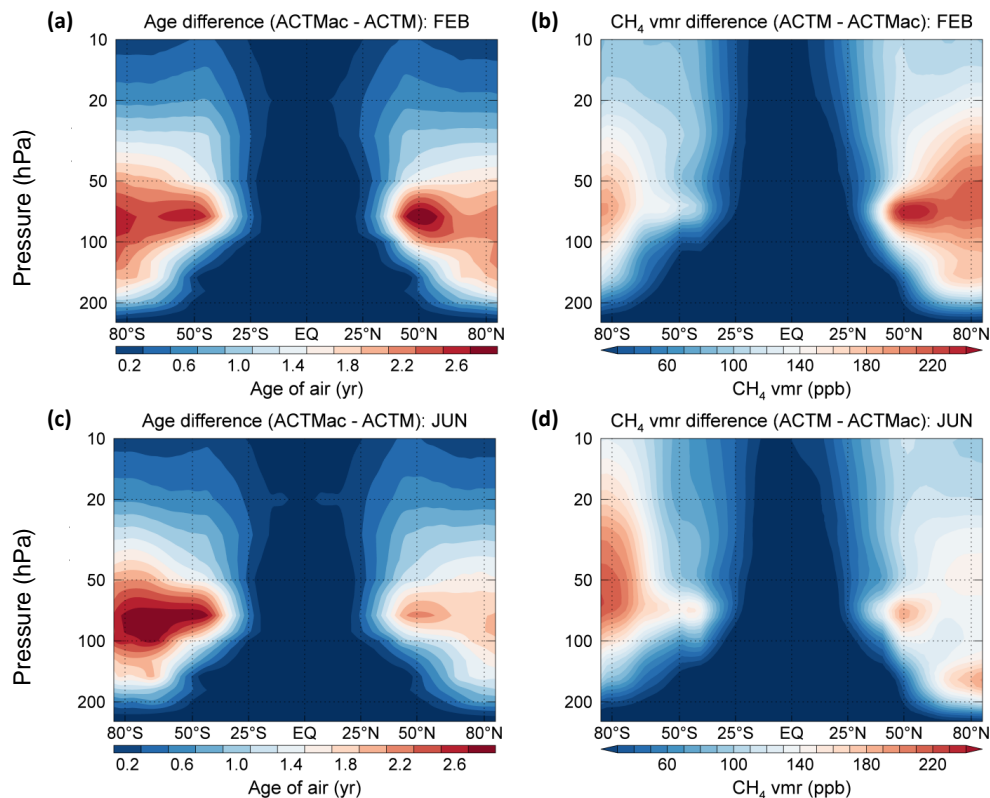


Figure A2.

Title Page

Abstract Introduction

Conclusions References

Tables Figures

◀ ▶

◀ ▶

Back Close

Full Screen / Esc

Printer-friendly Version

Interactive Discussion



The imprint of stratospheric transport on column-averaged methane

A. Ostler et al.

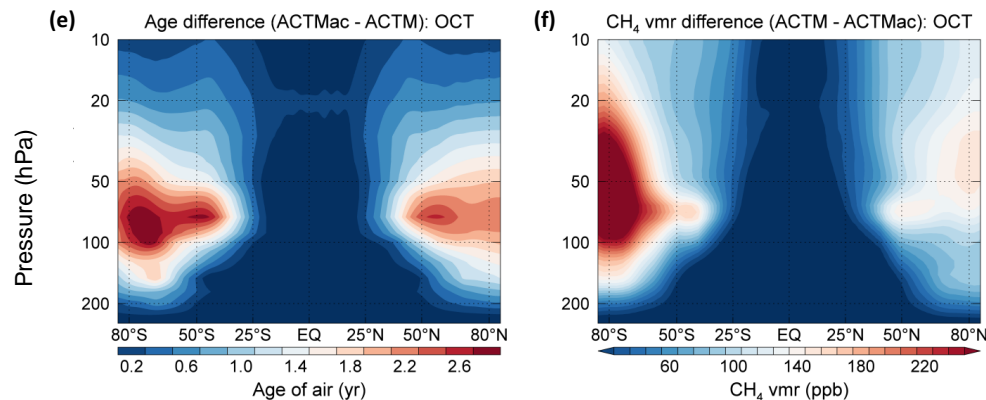


Figure A2. Seasonal impact of stratospheric transport correction on zonal mean distributions of CH_4 . As Fig. 1, but only difference distributions of mean age in years (yr), and of CH_4 volume mixing ratios (vmr) in parts per billion (ppb), respectively. Age distributions and CH_4 distributions are monthly means for the year 2009. Zonal distributions corresponding to different months (February: **a**, **b**; June: **c**, **d**; October: **e**, **f**) reflect the seasonal variation of the stratospheric model-transport error.

[Title Page](#)[Abstract](#)[Introduction](#)[Conclusions](#)[References](#)[Tables](#)[Figures](#)[◀](#)[▶](#)[◀](#)[▶](#)[Back](#)[Close](#)[Full Screen / Esc](#)[Printer-friendly Version](#)[Interactive Discussion](#)

The imprint of stratospheric transport on column-averaged methane

A. Ostler et al.

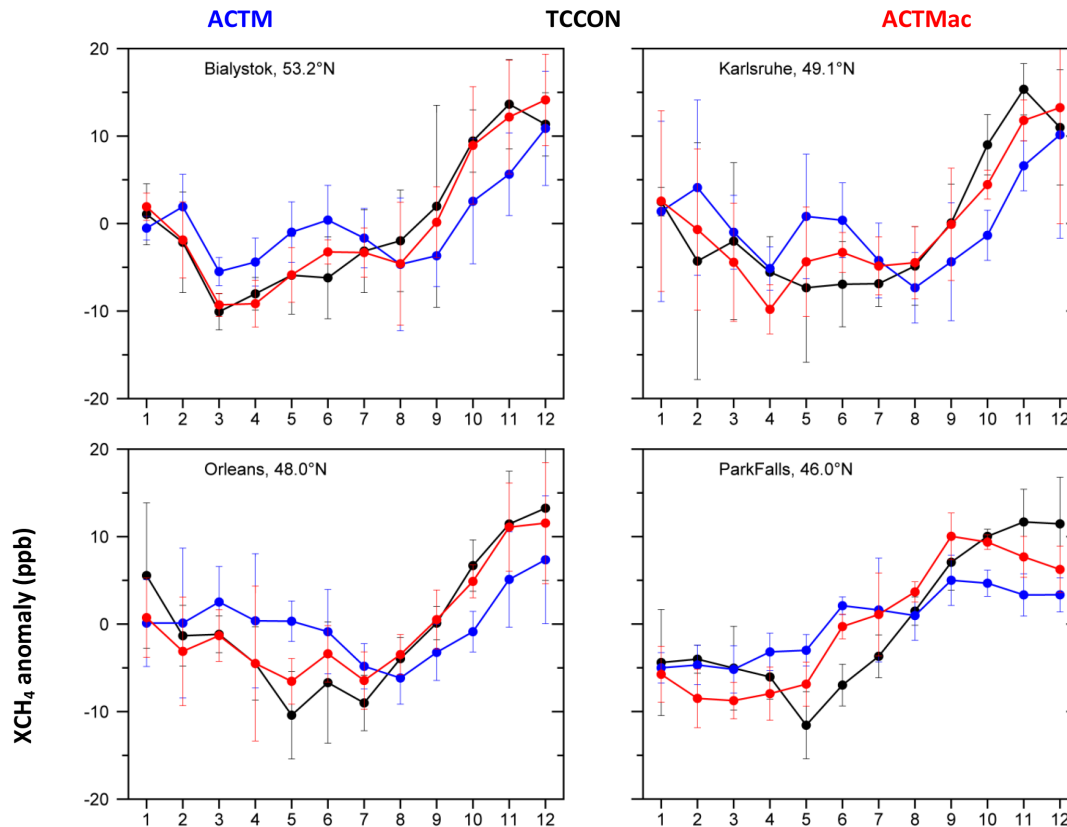


Figure B1.

Title Page

Abstract Introduction

Conclusions References

Tables Figures

◀ ▶

◀ ▶

Back Close

Full Screen / Esc

Printer-friendly Version

Interactive Discussion



The imprint of stratospheric transport on column-averaged methane

A. Ostler et al.

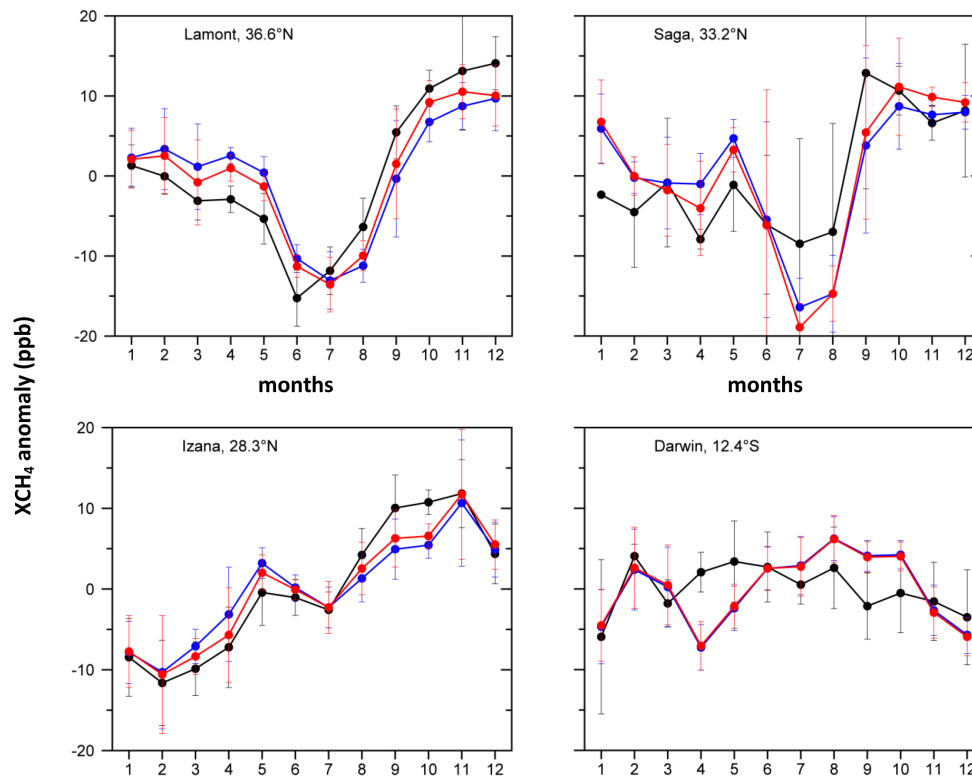


Figure B1.

[Title Page](#)[Abstract](#)[Introduction](#)[Conclusions](#)[References](#)[Tables](#)[Figures](#)[◀](#)[▶](#)[◀](#)[▶](#)[Back](#)[Close](#)[Full Screen / Esc](#)[Printer-friendly Version](#)[Interactive Discussion](#)

The imprint of stratospheric transport on column-averaged methane

A. Ostler et al.

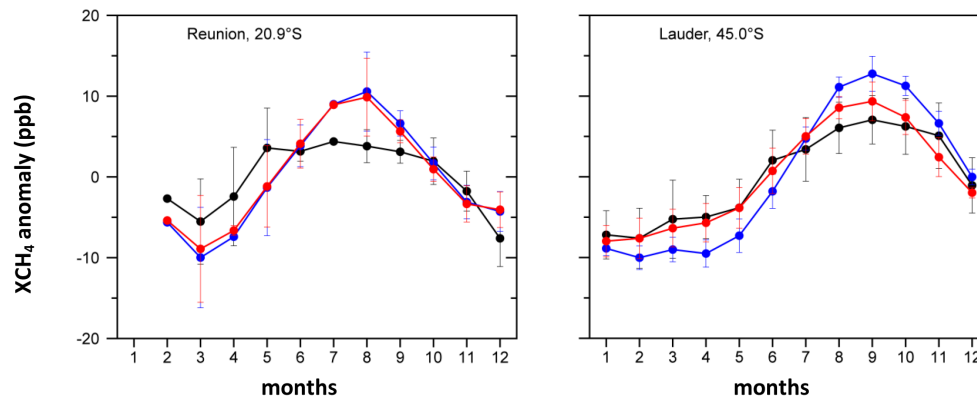


Figure B1. Contribution of stratospheric transport on mean seasonal anomalies of CH₄. Mean seasonal cycles are calculated from climatological monthly means of detrended XCH₄ time series for ACTM (blue), ACTMac (red), and TCCON (black), respectively. Error bars are 2σ standard errors; XCH₄ in parts per billion (ppb).

Title Page

Abstract

Introduction

Conclusions

References

Tables

Figures

◀

▶

◀

▶

Back

Close

Full Screen / Esc

Printer-friendly Version

Interactive Discussion

The imprint of stratospheric transport on column-averaged methane

A. Ostler et al.

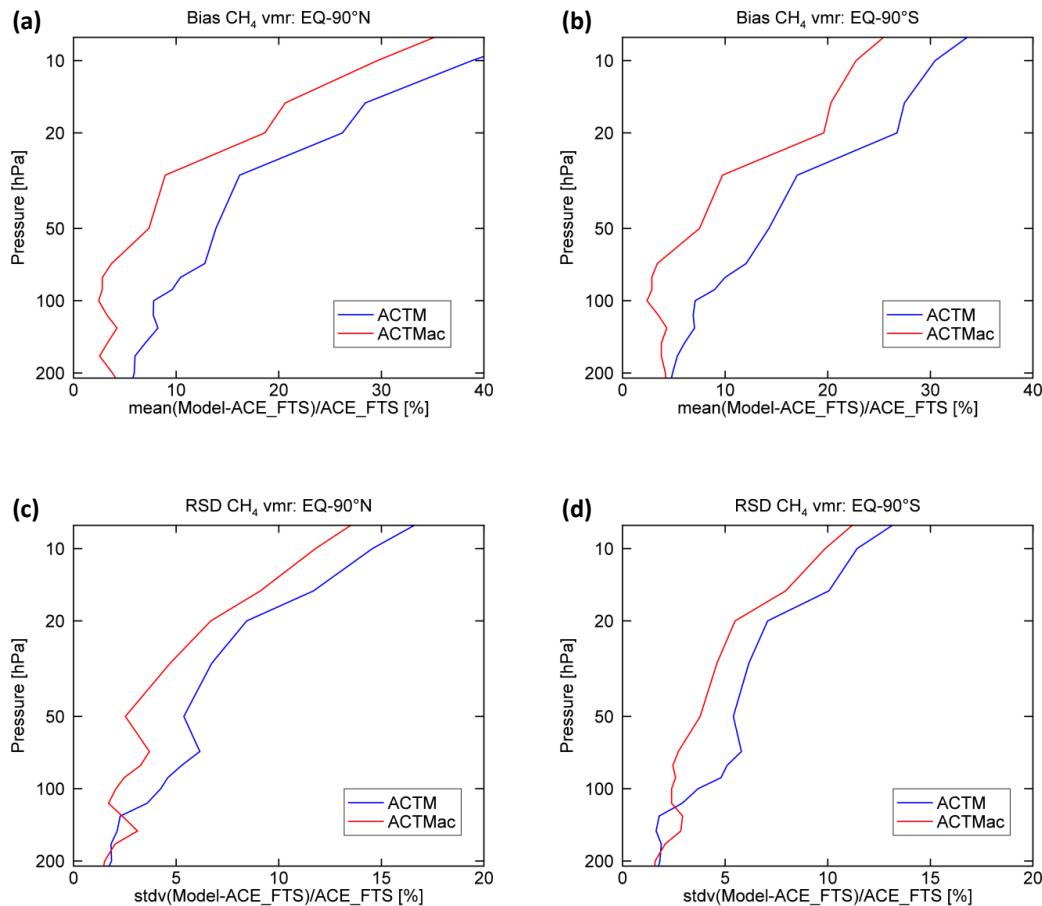


Figure C1.

Title Page	
Abstract	Introduction
Conclusions	References
Tables	Figures
◀	▶
◀	▶
Back	Close
Full Screen / Esc	
Printer-friendly Version	
Interactive Discussion	



The imprint of stratospheric transport on column-averaged methane

A. Ostler et al.

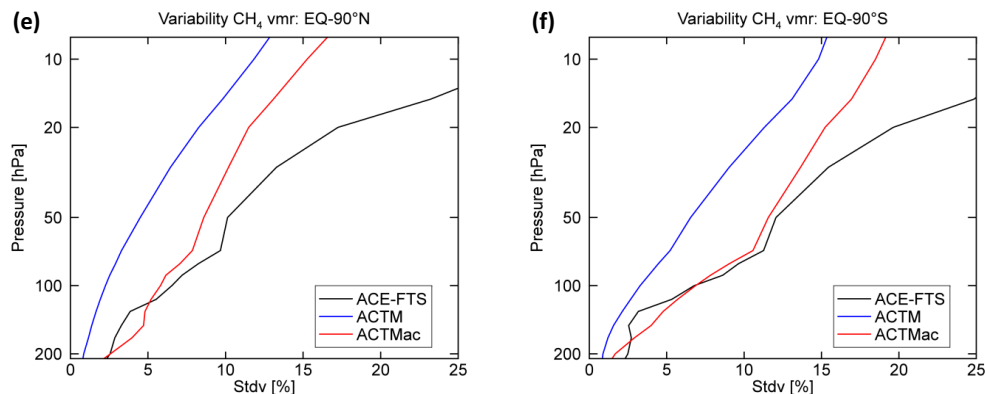


Figure C1. Statistical evaluation of latitude-height agreement between multi-annual stratospheric CH₄ model distribution and ACE-FTS climatology. Bias (**a**, **b**) and residual standard deviations (**c**, **d**) are derived from monthly differences between model (two-year average: 2008, 2009) and ACE-FTS CH₄ vmr as a function of altitude (pressure) for both hemispheres. Individual standard deviations (**e**, **f**) from CH₄ vertical distributions reflect atmospheric variability.

[Title Page](#)[Abstract](#)[Introduction](#)[Conclusions](#)[References](#)[Tables](#)[Figures](#)[◀](#)[▶](#)[◀](#)[▶](#)[Back](#)[Close](#)[Full Screen / Esc](#)[Printer-friendly Version](#)[Interactive Discussion](#)

The imprint of stratospheric transport on column-averaged methane

A. Ostler et al.

Title Page

Abstract

Introduction

Conclusions

References

Tables

Figures

◀

▶

◀

▶

Back

Close

Full Screen / Esc

Printer-friendly Version

Interactive Discussion

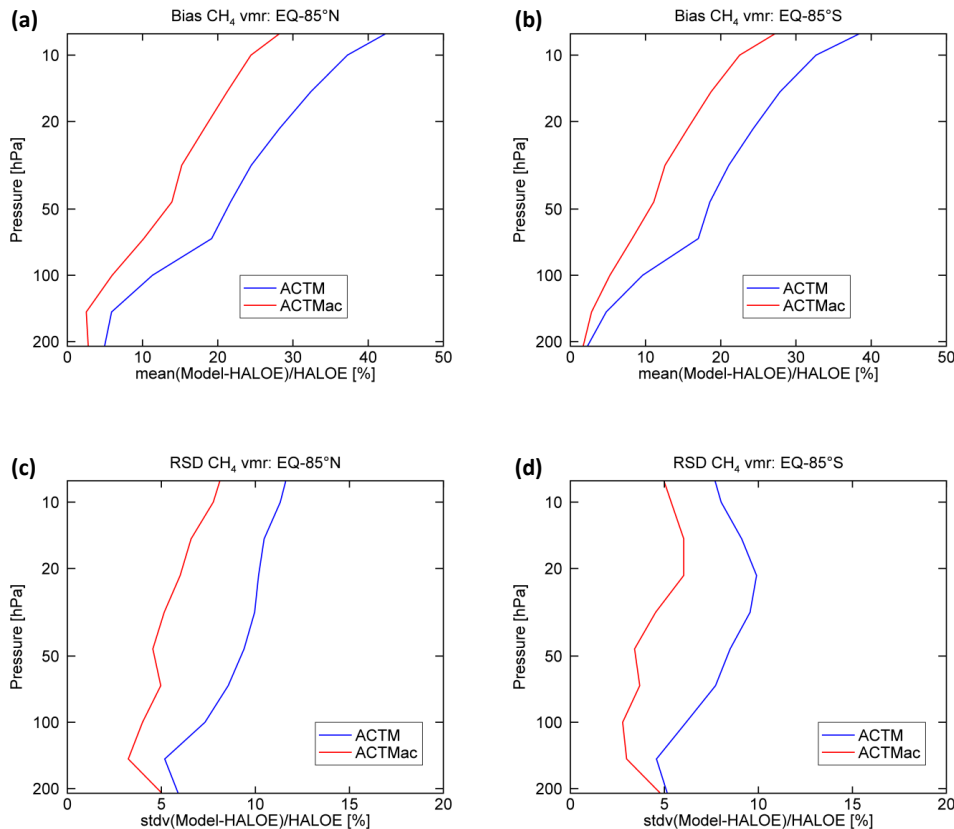


Figure C2.

The imprint of stratospheric transport on column-averaged methane

A. Ostler et al.

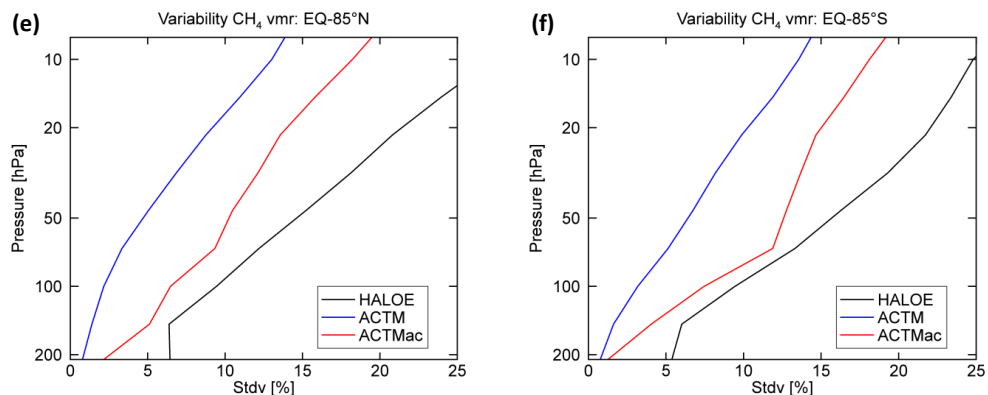


Figure C2. Statistical evaluation of latitude-height agreement between multi-annual stratospheric CH₄ model distribution and HALOE climatology. Bias (**a**, **b**) and residual standard deviations (**c**, **d**) are derived from monthly differences between model (two-year average: 2008, 2009) and HALOE CH₄ vmr as a function of altitude (pressure) for both hemispheres. Individual standard deviations (**e**, **f**) from CH₄ vertical distributions reflect atmospheric variability.

Title Page

Abstract

Introduction

Conclusions

References

Tables

Figures

◀

▶

◀

▶

Back

Close

Full Screen / Esc

Printer-friendly Version

Interactive Discussion

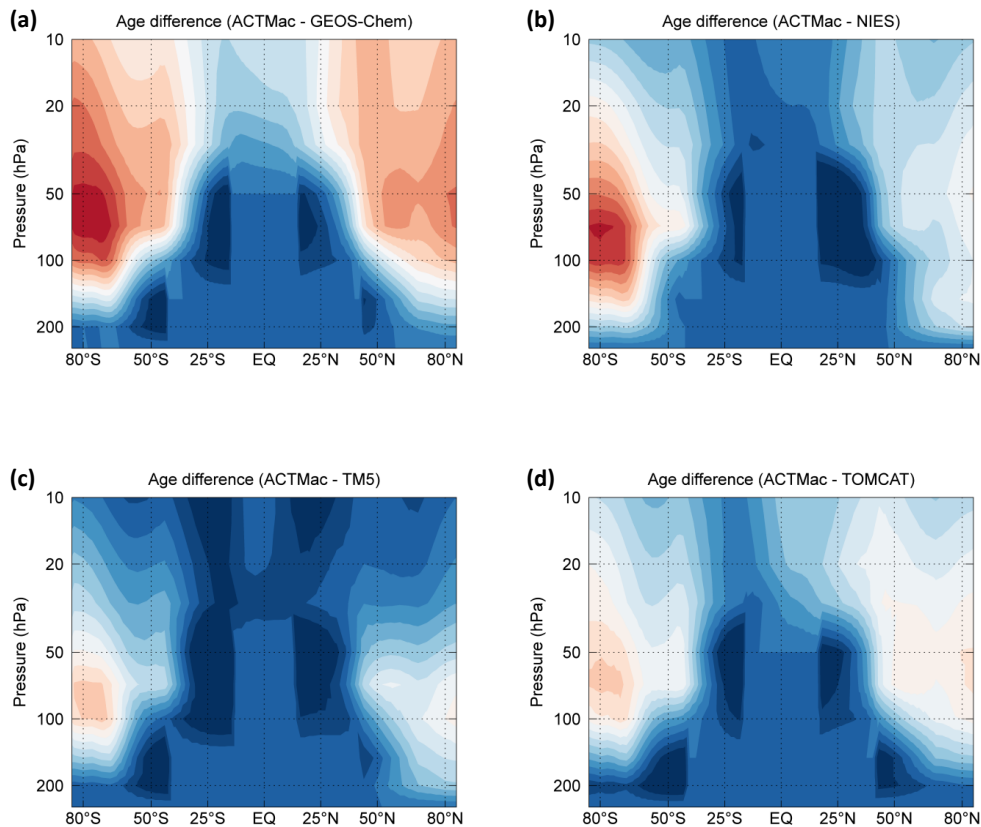


Figure D1.

The imprint of stratospheric transport on column-averaged methane

A. Ostler et al.

Title Page	
Abstract	Introduction
Conclusions	References
Tables	Figures
◀	▶
◀	▶
Back	Close
Full Screen / Esc	
Printer-friendly Version	
Interactive Discussion	



The imprint of stratospheric transport on column-averaged methane

A. Ostler et al.

Title Page

Abstract

Introduction

Conclusions

References

Tables

Figures

◀

▶

◀

▶

Back

Close

Full Screen / Esc

Printer-friendly Version

Interactive Discussion

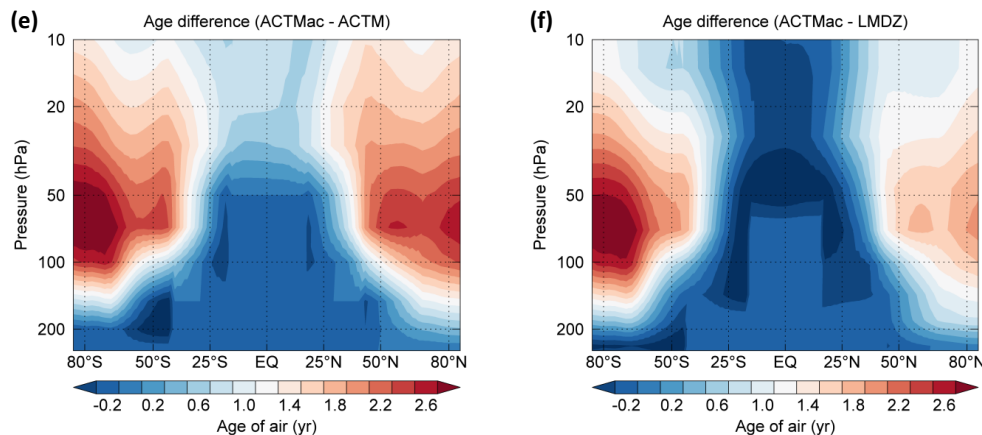


Figure D1. Stratospheric model-transport error. The difference between observed mean age (ACTMac) and simulated mean age is illustrated by zonally-averaged annual mean distributions of mean age in years (yr). The age differences indicate regions affected by model errors in stratospheric transport. Age distributions of TransCom models (**a–f**) were averaged for two years (2006, 2007).

The imprint of stratospheric transport on column-averaged methane

A. Ostler et al.

Title Page

Abstract

Introduction

Conclusions

References

Tables

Figures



Back

Close

Full Screen / Esc

Printer-friendly Version

Interactive Discussion

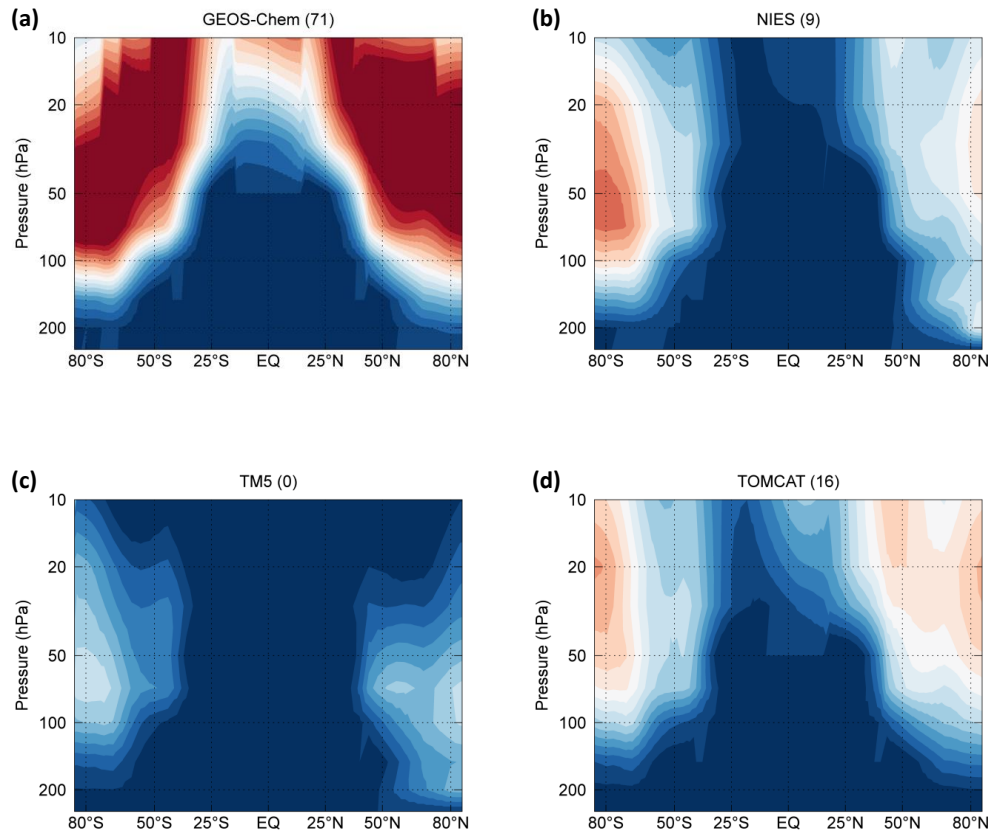


Figure D2.

The imprint of stratospheric transport on column-averaged methane

A. Ostler et al.

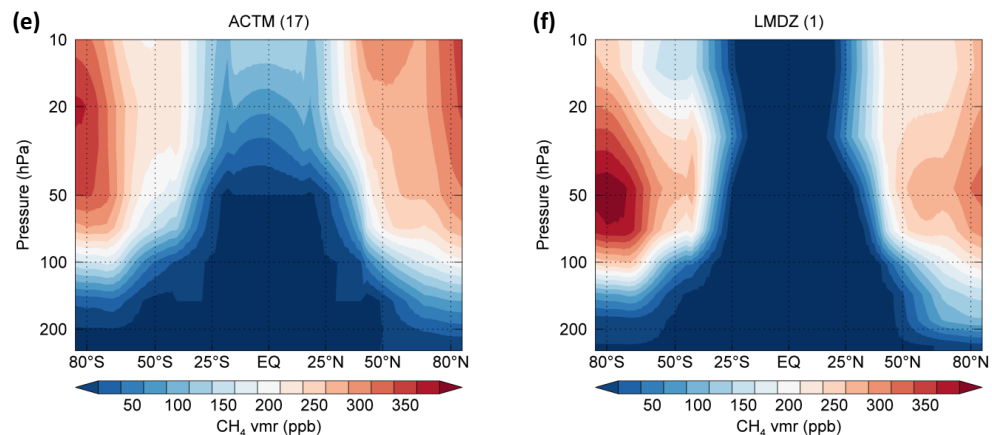


Figure D2. Impact of stratospheric model-transport error on stratospheric CH_4 . The difference between simulated and corrected CH_4 is illustrated by zonally-averaged annual mean distributions of CH_4 mixing ratios in parts per billion (ppb). The CH_4 differences indicate regions affected by model errors in stratospheric transport. CH_4 distributions of TransCom models (**a–f**) were averaged for two years (2006, 2007). An offset is added to the concentrations in each panel (given after the model name in ppb) that adjusts the model fields to a common average value of 1770 ppb between 950 and 500 mb.

Title Page

Abstract

Introduction

Conclusions

References

Tables

Figures

◀

▶

◀

▶

Back

Close

Full Screen / Esc

Printer-friendly Version

Interactive Discussion