

Artificial Hematopoietic Stem Cell Niches-Dimensionality Matters

Abstract

Hematopoietic stem cell niches are perhaps the best described niche system in mammals. The niches themselves, as well as their cellular and structural constituents and factors that play a role in maintaining the niche structure and function, are being refined on a more or less daily basis. Despite this, it seems as if the more we know the harder it gets to mimic the *in vivo*-situation using *in vitro*-systems. This is due to the fact that hematopoiesis is a multi step maturation process leading to HSC heterogeneity. Subpopulations of HSCs and niche supporting cells can be defined depending on characteristics such as their potency of leading to successful reconstitution of sub lethally irradiated mice in serial transplantation experiments or, with less scientific impact, clonogenic assays. Since the bone marrow obviously provides all necessary information to maintain the stem cell pool constant and to adapt the number of blood cells according to physiologic needs, it has been the goal to engineer artificial niches that display at least one or several of the major characteristics of the *in vivo*-situation to make use of these systems for not only fundamental research purposes but, moreover, also for clinical applications. This review will give an overview of approaches to engineering artificial hematopoietic niches with a focus on the complexity/dimensionality of the systems used.

Keywords: Hematopoietic stem cell; Marker; Differentiation; Niche; Progenitor; Mesenchymal stem cell, Artificial

Review Article

Volume 2 Issue 5 - 2017

Cordula Nies and Eric Gottwald*

Karlsruhe Institute of Technology, Germany

***Corresponding author:** Eric Gottwald, Institute of Functional Interfaces, Karlsruhe Institute of Technology, Hermann-von-Helmholtz-Platz 1, 76344 Eggenstein-Leopoldshafen, Germany, Tel: +49-721-608-26803, Fax: +49-721-608-23478; Email: eric.gottwald@kit.edu

Received: June 12, 2017 | **Published:** July 24, 2017

Abbreviations: AC: Adipocytes; AGM: Aorta Gonad Mesonephros Region; ALCAM: Activated Leukocyte Cell Adhesion Molecule; BM: Bone Marrow; BMPRIA: Bone Morphogenetic Protein Receptor Type IA; BFU-E: Burst-Forming Unit-Erythrocyte; CFU-C, -GM, GEMM, -S: Colony-Forming Unit-Granulocytic Progenitor Cells, -Granulocyte-Monocyte, Granulocyte, Erythrocyte, Monocyte/Macrophage, Megakaryocyte, -Spleen; CC: Chondrocytes; CXCL-12: C-X-C-Motif-Chemokine Ligand-12; EHT: Endothelial-To-Hematopoietic Transition; G-CSF: Granulocyte Colony-Stimulating Factor; LTC-IC: Long-Term Culture-Initiating Cells; MDGF: Megakaryocyte-Derived Growth Factor; NMSC: Non-Myelinating Schwann Cells; OB: Osteoblasts; Ocn: Osteocalcin; Osm: Oncostatin M; Osx: Osterix; PDGFR: Platelet Derived Growth Factor Receptor; PDMS: Polydimethylsiloxane; PTH: Parathyroid Hormone; PVC: Perivascular Stromal Cells; SCF: Stem Cell Factor; SDF-1: Stromal Cell-Derived Factor-1; SEC: Sinusoidal Endothelial Cells; TGF- β : Transforming Growth Factor β

Introduction

Hematopoiesis is the process that ultimately leads to the generation of all blood cell types. This process in mammals begins with the transdifferentiation of a subpopulation of endothelial cells in the aorta-gonad-mesonephros region (AGM) of the embryo [1,2], a process named endothelial-to-hematopoietic transition (EHT)[3]. In addition to being in the embryonic ventral aorta, HSCs have also been shown to be in the head [4,5], the placenta [6,7] and the yolk sac [8]. With the progression of embryonic development,

the HSCs migrate to the fetal liver, where they expand and are maintained until shortly before birth, at which point they again migrate and finally reside in the bone marrow in hematopoietic stem cell (HSC)-supportive niches [4,9]. The different origins and habitats of HSCs also seem to lead to a significant heterogeneity in their functional properties such as lineage output and self-renewal ability [9]. For current and future artificial hematopoietic systems it will be crucial which HSCs are used and/or combined with other niche cell types and under which conditions they are cultivated. In this review, the term hematopoietic stem cell is used for those cells that are able to self-renew and generate all blood cell types while the term hematopoietic progenitor cell refers to cells that have lost the ability to self-renew while still being able to contribute to complete lineage commitment. In the following, some of the important points to consider for engineered hematopoietic niches, such as cell sources, scaffolds, 2D vs. 3D-approaches, and the desired/observed outputs will be discussed.

Hematopoietic niche models

Despite our well-established knowledge that hematopoietic stem cells in adults reside primarily in the bone marrow, we are far from being able to understand fully which cell types, soluble factors, dimensionality, and mechanical cues are responsible for the successful orchestration of a life-long hematopoiesis (Figure 1). To date, several models are able to explain some of the main features that characterize the behavior of HSCs in their niche. The most widely accepted of these are the endosteal niche, the

perivascular niche and, recently proposed, the hemosphere niche model which combines the perivascular and endosteal niche models [10]. In the following paragraph, the main features of the models shall be highlighted. The evolution of a “niche” concept is connected to the work of Till & McCulloch [11], who demonstrated colony-forming-units in the spleen (CFU-S) after injecting healthy bone marrow cells in supralethally γ -irradiated mice, leading to the notion that “the results are thus compatible with the assumption that single viable cells from the marrow graft are able to give rise to colonies in the spleen” and “because the marrow suspension injected contained many different cell types, the identity of the cells giving rise to colonies is uncertain” [11]. By this, not only the tissue stem/progenitor cell concept but also the necessity of “colony-forming-unit”-supporting cells, the niche-building constituents, were implicated. This concept was confirmed later on by Worton et al. [12]. Then, Dexter and colleagues demonstrated that the crucial feature for the maintenance of CFU-S- and CFU-C-activity was a stromal layer of cells consisting of bone marrow phagocytic mononuclear cells, epithelial cells and giant fat cells [13]. It was not until 1978 that Schofield hypothesized that the CFU-S cells were first generation-colony forming cells rather than real stem cells and that stem cells reside in niches that maintain stemness, enable self-renewal, prevent differentiation, and limit the number of stem cells [14]. The close linkage of hematopoiesis to bone marrow was shown by Lord et al. [15] and Gong [16] as well as Calvi et al. [17] and Zhang et al. [18] who demonstrated that an increase in osteolineage cells by constitutive expression of an activated parathyroid hormone receptor or a bone morphogenetic protein receptor type 1A depletion, respectively, lead to an increase in hematopoietic stem/progenitor cells. All the groups described what today is known as the endosteal niche in contrast to the perivascular niche described by Kiel and colleagues [19]. In addition to the two proposed niche compartments, Wang and colleagues introduced a third one which they termed hemosphere. This model unites the two earlier models which identified a zone between sinusoidal endothelial cells (SEC) and perivascular stromal cells (PVC) that contain clusters of HSCs. Deletion of vascular endothelial growth factor receptor-2 (VEGFR2) from endothelial cells disrupted the formation of hemosphere structures and led to reduced numbers of HSCs in bone marrow [10]. An overview of the niche compartments is depicted in Figure 2.

Hematopoietic stem cells

Human hematopoietic stem cell sources comprise the bone marrow, peripheral blood, the postpartum placenta and the umbilical cord. Due to their more naïve characteristics and their availability, HSCs from cord blood are widely used in research. However, there are some differences compared to peripheral blood and bone marrow such as differences in the composition, number and properties of the cells [20-24]. CD34⁺CD38⁻ cells, locked in the G₀-phase of the cell cycle, show a greater proliferative response to cytokines and are less dependent on stromal cells than the corresponding cells in the bone marrow or peripheral blood [20, 24-26]. Moreover, cord blood differs from bone marrow and peripheral blood with respect to the number of colony forming cells. Cord blood contains 8.000 BFU-E forming cells, between

13.000 and 24.000 CFU-GM and between 1.000 and 10.000 CFU-GEMM forming cells in 1 ml of blood which is 3 and 15 times more than the numbers in marrow and peripheral blood, respectively [20,27,28]. The number of cells expressing the surface antigen CD34 in cord blood lies between 0.02 and 1.43%, which is close to the values in bone marrow cells (0.5-5%) but different from peripheral blood (<0.01%) [20,29]. Also, the number of CD34⁺HLA-DR⁻ cells and CD34⁺CD38⁻ cells in cord blood is higher than in bone marrow (4% compared to 1%) [20,30]. Adhesion receptors play a major role in the hematopoietic process. More than 20 different adhesion receptors have been identified on hematopoietic progenitors [31]. The expression of integrins on CD34 expressing cord blood cells is higher than for CD44, CD49d, and CD49f but lower in CD11 and CD18 compared to bone marrow or peripheral blood [25]. The more naïve character of the cord blood cells can also be explained by the longer telomere length which is responsible for the larger number of progeny [20,24,28]. Inside and outside the niche(s) a cocktail of cytokines is constantly sensed by the cells. Cord blood HSCs seem to have a higher affinity for stromal cell-derived factor-1 (SDF-1), react stronger to IL-3, IL-6 and stem cell factor (SCF) leading to a larger number of colonies [20,32-34].

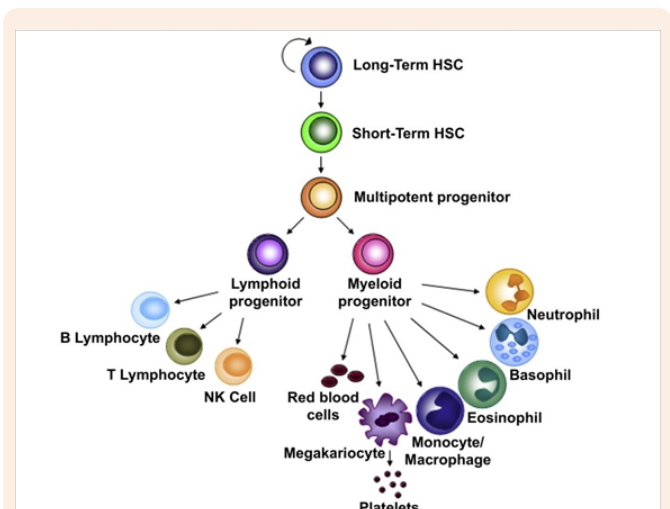


Figure 1: HSC hierarchy. Long-term HSCs (LT-HSC) have the capacity to generate all the blood-cell lineages but they are also able to assure the maintenance of a stem cell pool through self-renewing divisions [105].

When engineering niches it is therefore important to keep these differences in HSC sources in mind and to adapt the experimental conditions accordingly.

Bone marrow niche supporting cells

To name all other cellular components of the bone marrow niche is quite a task since the identification of the cell types involved sometimes refers to function, location, marker expression, differentiation stage or even combinations of these features, we therefore, will stick to the convention of Ugarte and Forsberg [10] who proposed to use the term “stromal cells” for all

non-hematopoietic cell types (CD45-Ter119- or CD45-Lin-) such as mesenchymal stromal cells (MSC), perivascular cells (PVC), (sinusoidal) endothelial cells ((S)EC), osteoblasts (OB), adipocytes (AC), chondrocytes (CC), and non-myelinating Schwann cells (NMSC). Moreover, Ugarte and Forsberg proposed to group the cells according to lineage relationships which leads to the use of OBCs for the osteoblastic lineage including osteoprogenitors and osteoblasts as well the term MSPC for mesenchymal stromal progenitor cells as proposed by Frenette et al. [35]. For reference of the cellular composition of the bone marrow niche Table 1.

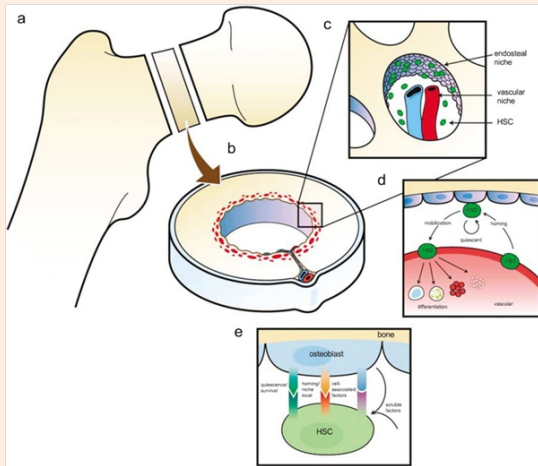


Figure 2: A model of the hematopoietic stem cell (HSC) niche in long bones. (a and b) Organization of long bones and location of the HSC niches. Recent studies demonstrate that endosteal osteoblasts and their precursors play a critical role the stem cell 'niche' (c). In addition, endothelial cells are likely to contribute to niche function (c). Central to these hypotheses are the demonstration of osteoblast (OB)- or endothelial cell-expressed regulatory components that influence stem cell function and are likely to include cell-to-cell receptors, and soluble and cell-surface associated cytokines and growth factors. (d) Egress into and out of the marrow by HSCs facilitates transit into and out of the vascular niche, which is permissive for proliferation and differentiation. The endosteal niche facilitates HSC maintenance and quiescence. Reciprocal interactions between stem cells and their niches are likely to play key roles in the establishment and maintenance of the stem cell niche in the bone marrow (not shown). (e) Factors produced by osteoblasts that influence HSCs. Stem cell fate is influenced by specialized microenvironments that remain poorly defined. Osteoblasts produce soluble hematopoietic-supportive secreted and cell-associated factors that work in concert so that HSCs derive regulatory information from bone, accounting for the localization of hematopoiesis in bone marrow (homing/localization receptors e.g. Annexin II, VCAM-1, CXC chemokine receptor 4 (CXCR4)/CXC chemokine ligand 12 (CXCL12)). Quiescence factors (e.g. bone morphogenic factors, fibroblast growth factors, Flt-3 ligand, Tie2/Ang-1, granulocyte and granulocyte-macrophage colony-stimulating factors, hepatocyte growth factor (HGF), leukemia inhibitory factor (LIF), osteopontin and high levels of extracellular calcium) and cell-associated factors are known to include but are limited to osteopontin, granulocyte and granulocyte-macrophage colony-stimulating factors and transforming growth factors (TGFs). Soluble factors known to influence HSC function include parathyroid hormone and erythropoietin (Epo) (reproduced with permission of Nature Publishing group).

Since the stromal cell composition has been expertly reviewed by Yu & Scadden [36], Lo Celso & Scadden [37], Ugarte & Forsberg [10], and Nakamura et al. [38], I will only briefly summarize the non-hematopoietic cellular composition of the bone marrow niche.

Osteolineage cells

Perhaps the most contradictory results with regard to the function of osteolineage cells within the niche has been reported about these cell types. By conditional deletion of the bone morphogenetic protein receptor 1A (BMPR1A) in hematopoietic cells using the Mx-1-cre promoter system, it was shown that genetic intervention of osteolineage cells alters the number of HSCs and downstream hematopoiesis [18,36]. Similar results were obtained by osteoblast-specific expression of the parathyroid hormone receptor (PTH) [17,36]. However, since the osteoblastic population shows a diverse marker expression, it was shown that major ablation of a sub-population of osterix (Osx) and osteocalcin (Ocn) positive cells does not interfere with long-term HSC maintenance but instead reduces T-competent progenitors in the thymus [36,39]. Other sub-populations expressing activated leukocyte cell-adhesion molecule (ALCAM) and/or stem cell antigen-1 (Sca-1) maintained long-term reconstitution activity of HSCs *in vitro* in which ALCAM⁺Sca-1⁻ cells enhanced LTR-activity by upregulation of homing- and adhesion-related-genes, while more mesenchymal lineage-like cells (ALCAM⁺Sca-1⁺) highly expressed cytokine-related genes indicating that these cells are involved in the regulation of HSC proliferation and quiescence [38]. Another marker shown to be dependent on the differentiation stage of the osteolineage cell is the ribonuclease DICER. Whereas conditional deletion of DICER in osteoprogenitors dramatically affects hematopoiesis, no effect was observed in mature osteocalcin⁺ osteoblasts [37,40].

Perivascular (stromal) cells

Due to their localization, perivascular cells have been early "hot" candidates for being necessary to maintain HSC homeostasis. Within this population, the best studied cell types are the mesenchymal stromal cells and the C-X-C-motif-chemokine ligand-12 (CXCL-12) abundant reticular cells (CAR), although the latter have been proposed to be a subpopulation of MSCs [41]. The cells are responsible for the retention in the bone marrow [42,43], the direct supply of soluble and non-soluble factors [42,44], their capacity to differentiate into other niche cell types such as osteoblasts, adipocytes and chondrocytes [44-46], as well as the maintenance of HSC quiescence [47]. Some of the functions have been associated to markers such as CD146 [48], CXCL-12, SCF [43, 45,46], platelet derived growth factor receptor (PDGFR)- α and - β [44,49] and Sca-1 [50], stem cell factor (SCF) [43], and CD51 [51]. Meanwhile, it seems to be clear that mesenchymal stromal cells are the key players among the non-hematopoietic cells in the niche.

Endothelial cells

The bone marrow is a highly vascularized structure and it is generally agreed upon that HSCs reside in close proximity to the bone vasculature. The endothelial cells of the bone marrow

are believed to have a range of effects on HSCs such as the provision of adhesion molecules (selectins, vascular cell adhesion molecule-1 (VCAM-1), intercellular adhesion molecule 1) [52], lineage specific cytokines (G-CSF, GM-CSF, M-CSF, Kit-ligand, IL6, FLK-2 ligand, leukemia inhibitory factor [53]), and Notch ligand [54]. Disruption of endothelial cell function has been conducted

by many groups with more or less severe effects on HSC fate. Blocking E-selectin after chemotherapy and irradiation led to an improved HSC survival [36,55], and conditional deletion of Tie2⁺ endothelial cells reduced HSC numbers without inducing stem cell mobilization [36,44]. Altogether, the data raised so far indicate a prominent role of endothelial cells in the niche.

Table 1: Non-hematopoietic niche cell components (reproduced with permission of WileyVCH Verlag GmbH & Co. KGaA).

Cell Type	Identity/Markers ^a	Mouse Model ^b	Niche Function
Perivascular Stromal Cell	CXCL12 ^{hi} SCF ^{high} NG2	Nestin-GFP [43,45]	HSC maintenance and retention in BM
-Nes-GFP	Pdgfr-a	Prxf-cre [44,46]	Direct supply of soluble and non-soluble factors for HSCs
-SCF GFP	Pdgfr-b	Cxcl2-GFP [42]/DsRed [46]	
-Cxc112-Gff /DsRed(CAR)	CD146 Sca-1 Vcam 1	Cxcl2-DTR-GFP [49]/ Osx-cre [44]	Precursors of other niche cells-osteoblasts, adipocytes, chondrocytes, etc.
	CFU-F Potential Mesenchymal Lineage differentiation	Lepr-cre [45,46]/ Scf-GFP [45]	
Sinusoidal Endothelial Cells	CD31 Endomucin VE-cadherin Vcam1 Lam-min Sca-1 MECA-32 Endoglin	Tie2-cre [44-46]/Cdh5-CreER [5]	HSC maintenance
Osteoprogenitors	Osterix Runx2 CD146	Osx-cre [44], Prx1-cre [44,46]	Lymphoid progenitor cell niche
Osteoblast (OB)	Osteocalcin, Osteopontin ALPL N-cad Cxcl12 ^{low}	Prx1-cre [44,46], Col2.3-cre [45,46], Osteocalcin-cre [44], Osx-cre [44,46]	
Adipocytes	Fabp4 Adiponectin Perilipin	A-ZIP/F1 [60]	Negative regulators of haematopoiesis
Monocytes/Macrophages	Gr-1	CD169-DTR [59]	Regulating MSC and OB Function. Active player in G-CSF mobilization.
	CD169	Gr-1-DTR [59]	
	CD11b	MAFIA [55,59]	
	F4/80	Clodronate Liposomes [55,59], CD68:G-CSFR [44]	
Non-myelinating Schwann Cells	Active TGF-B GFAP Nestin	Tgfr2 ^{fl/fl} [47]	Maintenance of HSC Quiescence

^aCommonly used markers to describe the respective cell population.

^bMouse models used to interrogate the respective cell population.

Monocytes/macrophages

This lineage is indispensable for the niche because of its capability of orchestrating the interplay between other niche cells and the HSCs. The function of the monocytes/macrophages is believed to be connected to the influence on mesenchymal stromal cells and osteoblasts. Albiero et al. [56] showed that CD169 labels M1 macrophages and that conditioned medium from M1 macrophages, but not from M0 and M2 macrophages, induced CXCL12 expression by mesenchymal stem/stromal cells. In silico data mining and *in vitro* validation identified oncostatin M (OSM) as the soluble mediator contained in M1 conditioned medium that induces CXCL12 expression via a mitogen-activated protein kinase kinase-p38-signal transducer and activator of a transcription 3-dependent pathway. Moreover, conditional depletion models showed that reductions in BM mononuclear phagocytes led to reduced bone marrow CXCL12 levels, the selective down-regulation of HSC retention genes in Nestin⁺-niche cells, and egress of HSCs/progenitors to the bloodstream. Of these, depletion of CD169⁺ macrophages were sufficient to induce HSC/progenitor egress. The macrophage depletion also led to an enhanced mobilization of HSCs by C-X-C-chemokine receptor type 4 (CXCR4)-antagonists or granulocyte colony stimulating factor (G-CSF) implicating a tightly controlled signaling network with the sympathetic nervous system since the sympathetic neural tone is crucial for both steady state [57] and granulocyte colony-stimulating factor (G-CSF)-enforced release [58] of HSCs/progenitors from the bone marrow [59].

Adipocytes

Another cell type that is part of the niche and involved in the regulation of hematopoiesis is the adipocyte. Naveiras et al. [60] showed that hematopoietic stem cells and short-term progenitors are reduced in frequency in the adipocyte-rich vertebrae of the mouse tail relative to the adipocyte-free vertebrae of the thorax and that in lipoatrophic A-ZIP/F1 'fatless' mice treated with the peroxisome proliferator-activated receptor- α inhibitor bisphenol A diglycidyl ether, marrow engraftment after irradiation is accelerated relative to wild-type or untreated mice which indicates that adipocytes act as predominantly negative regulators of the bone-marrow microenvironment.

Sympathetic nervous system cells

It has been shown that the sympathetic nervous system is regulating the hematopoietic niche function as well, directly and indirectly [61]. The direct mechanism is related to adrenergic stimulation of osteoblasts. Lee-Thedieck et al. [62] showed that the stiffening of osteoblasts was due to a decreased F- to G-actin ratio leading to a reorganization of the cytoskeleton. The indirect mechanism is related to the sensing of light. HSCs and their progenitors exhibit robust circadian fluctuations peaking 5 h after the initiation of light exposure and reaching a nadir 5 h after darkness [57]. This effect was due to noradrenalin secretion by the sympathetic nervous system leading to the antiphasic expression of CXCL-12 on stromal cells. This study also revealed that the adrenergic signals are locally delivered by nerves of the bone marrow and transmitted to stromal cells by the β 3-

adrenergic receptor which leads to a decreased nuclear content of Sp1 transcription factor and rapid down regulation of CXCL-12 expression [57]. This signaling cascade was further characterized by Yamazaki and colleagues who showed that Schwann cells are responsible for maintaining HSC hibernation [36]. Mice displaying autonomic nerve denervation, reduced number of TGF- β -producing cells or TGF- β type II receptor deficient HSCs exhibited reduced levels of Smad activation in HSCs, loss of HSCs from the bone marrow, and impaired long-term repopulation activity [36,47]. In addition, Katayama and colleagues demonstrated that UDP-galactose ceramide: galactosyl transferase-deficient (Cgt-/-) mice exhibited aberrant nerve conduction and displayed no HSPC egress from the bone marrow following G-CSF or fucoidan administration [36,58].

In vitro-Approaches

As we have learned from the previous sections, a multitude of cells as well as a multitude of factors are needed to maintain proper niche function, so that it is hard to summarize all the approaches for engineering an artificial niche with respect to "proper functioning". Moreover, mouse and human niches differ in some respects so that the cellular composition of artificial niches realizable in the mouse setting may not be transferable to the human situation. In addition, the extracellular matrix composition influences HSC differentiation, proliferation, lineage specification, and apoptosis [63-66]. The materials used in studies are therefore of utmost importance, and, as has been shown for some materials, may not be suitable for the *in vitro* culture of CD34⁺ cells [67]. However, in an attempt to give an overview of current artificial hematopoietic niches, we will approach the topic by taking into account the system complexity. Beginning with suspension culture, and two-dimensional systems, we will move forward to single cell- and 3D- (multicellular) systems. Heterogeneity is further increased by implementing flow and other capabilities such as high-throughput or upscaling capabilities. Last but not least, even an *in silico* approach will be discussed.

Suspension culture

One of the simplest culture methods of all for HSCs is the suspension culture technique. Harvested cells are put into medium, usually supplemented with a cocktail of growth factors and cytokines, and cultured for the desired period of time. The culture vessel can be a classical one such as a Petri dish or a flask [68] or, for clinical applications, be bags. With the former approach it has been shown that medium containing KIT ligand, FLK2/FLT3 ligand, interleukin-6 (IL-6), and erythropoietin, with or without IL-3, CD34⁺-kitlow-cells after a culture period of 2 weeks showed a day-60 engraftment capability whereas long-term engraftment failed [69]. With the bag approach, it was shown that CD34⁺ cell expansion prior to transplantation is feasible [70]. For this, the cells were cultured for 10 days in ateflon coated propylene bag containing 800 mL of defined media and 100 ng/mL each of SCF, G-CSF, and megakaryocyte-derived growth factor (MGDF).

Two-dimensional, multi-cell-systems

The next step in increasing the complexity is the increase in

cell number and/or the co-culturing of one or more cell types, moving the system further towards the *in vivo*-situation but at the same time excluding monocausality. The expansion potential of hematopoietic stem and progenitor cells was analyzed using 6-well plates coated with tropoelastin. A two- to three-fold expansion with a further increase after addition of IL-3, IL-6 and mouse stem cell factor could be observed. Since neither a truncated tropoelastin nor a cross-linked one was able to reproduce this effect, elasticity and tensegrity seemed to play an important role in HSC expansion [71]. Lee-Thedieck et al. [62] used flat fibronectin hydrogels to analyze the reaction of the hematopoietic line KG-1a and HSCs from cord blood with regard to adhesion and migration. They found that the number of adhering KG-1a cells or HSCs was higher and the cells migrated faster on hard gels. The culture of cord blood HSCs on top of an irradiated (20 Gy) mesenchymal stem cell (MSC) feeder layer maintained a primitive immunophenotype (CD34⁺CD133⁺ and CD38⁻) for more population doublings, while up-regulation of differentiation markers (CD13, CD45 and CD56) in HSCs was delayed to higher numbers of cell divisions. In particular, MSCs of early cell passages maintained CD34 expression in HPC over more cell divisions, whereas MSCs of higher passages further enhanced their proliferation rate [72]. Similar results were obtained by cultivating HSCs and MSCs long term in 2D with concomitant transplantation in mice. It was shown that the capacity of some totipotent hematopoietic stem cells can be maintained and amplified over extensive time periods *in vitro* without diminution of their long-term *in vivo*-repopulating potential as judged by competitive repopulating unit numbers [73]. PET films modified with connecting segment-1 (CS-1) and RGD-motifs were used for expansion purposes. The highest CD34⁺ cell expansion was observed on the CS-1 peptide-modified surface, where total nucleated cells, total colony forming unit, and long-term culture initiating cells were expanded by 589.67 ± 58.6 (mean \pm s.d.), 76.5 ± 8.8 , and 3.2 ± 0.9 -fold, respectively [74]. After 10 days of *ex vivo* expansion, only cells cultured on a CS-1 immobilized surface yielded positive engraftment. With the aim of retroviral transduction of CD34⁺ cells from peripheral blood or bone marrow, only cultivation with stromal cells led to a successful transduction of the latter whereas those of the peripheral blood could be transduced in the presence of either cytokines or stroma [75].

Single cell systems

The single cell systems used for the cultivation of HSCs are somewhat hard to categorize. This is due to the fact that the systems themselves offer a more or less 3D or “quasi-3D” environment but, due to the fact that single cells are incorporated, lack a real 3D organization. However, single cell systems offer some advantages over more complex systems such as the possibility for a more stringent cause-effect-analysis due to the limited components typically involved. Single cell systems have therefore been widely used to characterize single parameters in HSC behavior such as adhesion or stem cell maintenance. Dykstra and colleagues manufactured single cell microwells based on silicone gels for time-lapse video monitoring of HSCs that allowed high-resolution real-time tracking of cells in multiple expanding clones *in vitro* that could be coupled with functional assays of the

individually harvested clones at the end of the monitoring period. They identified two parameters that each showed a significant association with clones containing HSCs after 4 days of culture: a prolonged cell-cycle time measured over three divisions and a reduced proportion of progeny with uropodia at any time between 84 and 96 h of culture [76]. In an attempt to dissect the impact of geometrical constraints and adhesive interactions on HSCs during cytokine-driven expansion, Kurth et al. [77,78] used CD133⁺-cells that were cultivated in micrometer-scale cavities with 10 μ m in depth and 15 to 80 μ m in diameter, manufactured from PDMS and coated with fibronectin or collagen I. In this model it was shown that HSCs residing in smaller cavities displayed a decreased proliferation and differentiation accompanied by decreased DNA synthesis and an increased HSC marker expression [77]. Similar results have been shown with another system described as a single cell-system, although the characteristics of the system are also suited to be mentioned under 3D-systems. Based on PEG-hydrogels, Lutolf et al. [79] could show that those HSCs residing in microwells coated with Wnt3a or N-Cadherin displayed reduced proliferation kinetics and increased asynchronous division and that these cells were able to reconstitute whole blood in serial transplantation experiments in mice [80]. A device comprising a pneumatic valve which enabled the culturing of different types of niche cells in different parts of the same device was developed [81]. Single HSCs could be injected into the microfluidic device, manipulated, and placed onto different niches within the same device as controlled by the user.

3D-Systems

Synthetic, three-dimensional, Multi-Cell-Systems

Over the last decades it has been impressively demonstrated that three-dimensionality is an essential characteristic of organotypic behavior, be it simple morphology or more complex parameters such as stem cell maintenance, multipotency or even resistance to drugs. Inclusion of the next dimension in *in vitro*-models is therefore a logical consequence for the analysis of the above mentioned parameters. Figure 3 provides a synopsis of the approaches described below.

Electrospun nanofibres

One system that is popular not only for modelling the HSC niche makes use of electrospun nanofibers. Chua et al. [82,83] used such a system for expansion purposes. They found that aminated nanofiber meshes were most efficient as compared to tissue culture polystyrene (195 fold and 50 fold, respectively). Das and colleagues and Lu and colleagues have used a modified polyether sulfone nanofiber system for expansion of CD133⁺ cord blood cells [84,85]. Other expansion 3D-approaches made use of non-woven polyethylene terephthalate (PET). CD34⁺ cells from cord blood cultured in these structures showed a 30 to 100% increase in total cell number without the addition of cytokines. With thrombopoietin and flt-3/flk-2 ligand a two- to three-fold higher total cell number was demonstrated compared to 2D culture [86]. 3D-PET scaffolds were also used when surface modified with fibronectin. The study demonstrated the synergistic effect between the three-dimensionality of the scaffold and surface-

conjugated FN and the potential of this FN-conjugated 3D scaffold for *ex vivo*-expansion of HSPCs [87].

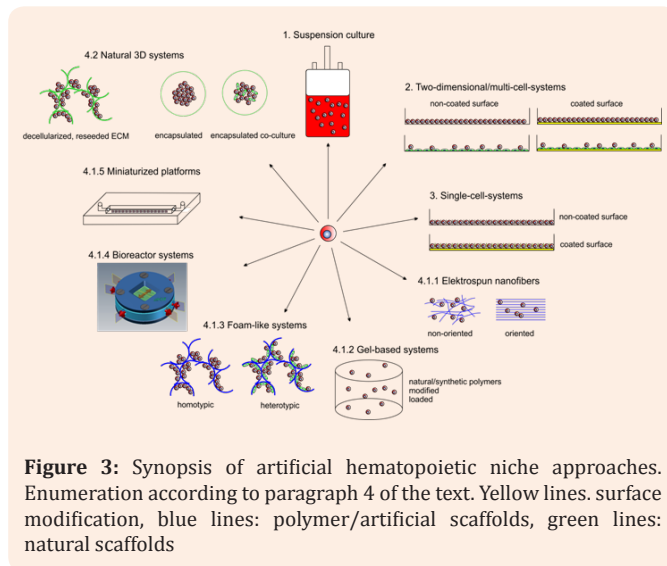


Figure 3: Synopsis of artificial hematopoietic niche approaches. Enumeration according to paragraph 4 of the text. Yellow lines: surface modification, blue lines: polymer/artificial scaffolds, green lines: natural scaffolds

Gel-based systems

Gel-based systems also showed promising results with regard to multiplication and preservation of stemness. Raic et al. [88] could show that by employing a salt leaching technique to prepare porous poly (ethylene glycol) diacrylate (PEGDA) hydrogels, HSCs from cord blood in co-culture with mesenchymal stromal cells from bone marrow had the strongest proliferative effect and that this effect was due to the 3D-environment when compared to a 2D-system. Using collagen gels, with or without embedded MSCs, only HSCs from bone marrow could be shown to preserve stemness whereas HSCs from cord blood displayed increased proliferation and lineage commitment [89]. Stem cell factor coupled to methacrylamide-functionalized gelatin gels (GelMA) has been used to analyze the influence on Lin⁻Sca-1⁺c-kit⁺ (LSK) cells with regard to maintaining more primitive HSC fractions, viability and expansion. It was shown that matrix-immobilized SCF is more selective in its ability to maintain primitive HSC fractions within a fully-3D hydrogel biomaterial as compared to soluble SCF in the media, likely due to exclusion of soluble SCF-induced differentiation [90]. A unique approach that made use of so-called inverted colloidal crystals (ICC) for the generation of polyacrylamide gels with a layer-by-layer-surface coating of DLL-1 notch ligand showed that when cultivating the mononuclear fraction, pre-erythrocytes and dendritic cells could be observed whereas when HSCs from cord blood were cultivated, T-cell lineage commitment and differentiation could be seen [91].

Foam-like systems

Scaffolds of different materials have also been employed for various purposes. For preserving the stem cell character as well as for the production of progeny, polyurethane foams (PFU) were used [92]. It could be demonstrated that 3D-cultures in different PFUs were superior with regard to both parameters, although the study used the whole MNC fraction instead of HSCs, indicating also

the importance of stromal cells. Another foam-scaffold approach used poly (L)-lactic acid (PLLA) to differentiate hematopoietic progenitors from mouse embryonic stem cells either alone or in co-culture with a stromal cell line (OP9). In this study it was shown that decreasing the scaffold pore size from 500 to 250 μm increases hematopoietic differentiation of embryonic stem cells (ESC). In addition, an increase in polymer concentration resulted in an increased scaffold compression modulus with a concomitant significantly enhanced hematopoiesis. Finally, higher cell seeding densities as well as co-culture with marrow-derived stromal cells increased HPC generation [93]. Poly (L)-lactic co-glycolic acid has been used as an *in vitro*-model for HSC and MSC homing and engraftment and tissue engineering purposes [94]. So-called micromarrow, an HSC/MSK co-culture model based on plates containing microwells whose surfaces have been modified by multi layering of chitosan and hyaluronic acid, showed that the number of HSCs in the system could be doubled relative to monolayer culture and that they expressed higher levels of key hematopoietic niche factors [95]. A famous material for bone regeneration, hydroxyapatite, has also been used for bone marrow regeneration using bone marrow stromal cells [96]. It was demonstrated that regenerated BM is capable of supporting hematopoietic stem cells (HSCs) and delivering HSCs to native BM *in vivo*. Carbon-based porous materials (tantalum-coated porous carbon lattices, TCPB) have been employed to analyze HSC maintenance and expansion [97,98]. These materials were capable of supporting the maintenance of immature progenitors for up to 6 weeks in the absence of supplemented cytokines. The results demonstrated further that the TCPB matrix facilitated and enhanced HPC maintenance and led to a 1.5-fold expansion of HPC numbers following 1 week in culture and a 6.7-fold increase in colony-forming ability following 6 weeks in culture in the absence of exogenous cytokines.

Bioreactor systems

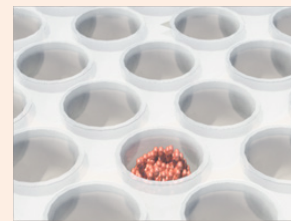
Several bioreactor platforms have also been used to cultivate HSCs with or without stromal cell contribution. Meissner et al. [99] used a fixed bed bioreactor filled with porous glass carriers to cultivate HSCs with MSCs. They could observe the expansion of very early progenitor cells (CFU-GEMM) up to 4.2-fold and later progenitor cells, CFU-GM and BFU-E, up to 7-fold and 1.8-fold, respectively. A stirred tank bioreactor was used to characterize the kinetics of stem cell factor receptor (c-kit) internalization by human Mo7e cells exposed to different extracellular concentrations of soluble SF [100], and a rotating wall vessel as well as continuously perfused cultures were used for expansion purposes [101,102]. A further bioreactor platform was used to co-cultivate mesenchymal stromal cells together with CD34⁺ cells from cord blood. A micro cavity array comprising 3x10⁵ MSCs and 2x10⁵ HSCs was cultivated under flow conditions (400 $\mu\text{l}/\text{min}$) for 14 days. Immunofluorescence, gene expression profiling with sqRT2-PCR and western blots revealed that the HSCs in the bioreactor throughout the entire cultivation period expressed CD34 whereas the expression was lost in control mono layers after 5 days indicating stem cell maintenance in the microcavity array system [103]. After a culture period of 21 days, it could be shown by single cell tracking and quantification of HSCs inside

single microcavities that HSCs migrate in the cellular network of MSCs where they form two populations, one that resides in the upper region of the microcavity and one that migrates to the bottom of the microcavity where extensive proliferation can be observed and at the same time maintaining CD34-expression (unpublished results, Figure 4). A bioreactor device with a fluid reservoir oscillating between two columns filled a porous material (polyethylene glycol terephthalate, PEGT) and polybutylene terephthalate (PBT), nonwoven meshes of esterified hyaluronan or porous β -tri-calciumphosphate ceramics showed that when medium was supplemented with hematopoietic growth factors not only mature hematopoietic cells, but also early multipotent progenitors (colony forming unit-granulocytes, -erythrocytes, -macrophages, -megakaryocytes, and granulocyte, erythrocyte, monocyte/macrophage (CFU-G, E, M, MK, GEMM)) could be entrapped in the pores of the scaffold [104]. This setup was then used by first loading the columns with stromal cells to generate a pre-formed niche and then infusing trackable HSCs. This study showed that after 3 weeks, a subpopulation of HSCs, able to form colonies *in vitro* and spleen colonies in irradiated mice, was still present [105]. Even commercial systems have been used to expand umbilical cord blood. A cassette type bioreactor, constantly perfused with fresh medium, was used to expand umbilical cord blood units during a culture period of 12 days. It could be shown that the median fold increase was 2.4 (range, 1.0-8.5) in nucleated cells, 82 (range, 4.6-266.4) in CFU granulocyte-macrophages, and 0.5 (range, 0.09-2.45) in CD34 lineage negative (lin-) cells [106].

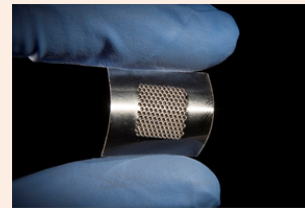
Miniaturized 2.5 - 3D-platforms

On the one hand, miniaturized platforms offer great potential with regard to parallelization; on the other hand, downsizing of structures below the multicellular aggregate level ($< 100 \mu\text{m}$) leads to the collection of more than one cell per structure but prevents building real multicellular aggregates such as spheroids or organoids. Therefore, due to the fact that these platforms are neither true 2D- nor 3D-platforms, they should be termed 2.5 D systems. In such a system, Torisawa et al. [107] engineered a bone marrow-on-a-chip-platform. For this, a "bone inducing material" was subcutaneously implanted in mice for 8 weeks. After removal, the so-called engineered bone marrow (eBM) was transferred to a chip where it retained hematopoietic stem and progenitor cells in normal *in vivo*-like proportions for at least 1 week in culture, and organ-level marrow toxicity responses and protective effects of radiation countermeasure drugs could be modelled. A system of interest, although not a true niche model, was described in the study that came up with a microfluidic system that can trap 440 individual HSCs in $18 \times 18 \times 10 \mu\text{m}$ cell traps. The device, made of PDMS, was used to characterize T-cell signaling and the signaling dynamics of patient-derived hematopoietic stem cells [108,109]. Another study used a device consisting of a microscope slide that was covered with a microscope cover slip with two electrodes at the end that delivered electric fields with a frequency of 1 MHz at a voltage of 20 Vpk-pk. It was possible with this device to direct the cells to the highest field strengths where they could be trapped by infusion of fibrinogen and thrombin. By layering Jurkat cells on top of mouse stromal cells (AC3) and/or SAOS-2 osteoblasts, multilayered constructs that resembled the natural "hematon" could be generated. It has been demonstrated that

hemispherical structures with distributions of cells similar to that in the hematon can be made using positive dielectrophoresis [110]. In an attempt to recreate the perivascular niche using a microfluidic approach, Carrion and colleagues [111] suspended endothelial cells within 3D fibrin gels patterned adjacent to stromal cells (either fibroblasts or bone marrow-derived MSCs). They executed a morphogenetic process akin to vasculogenesis, forming a primitive vascular plexus and maturing it into a robust capillary network with hollow, well-defined lumens. Both MSCs and fibroblasts formed pericytic associations with the ECs but promoted capillary morphogenesis with distinct kinetics. Biochemical assays within the niche revealed that the perivascular association of MSCs required interaction between their $\alpha\beta 1$ -integrin receptor and EC-deposited laminin [111].



A. Schematic representation of a microcavity array.



B. Microcavity array.

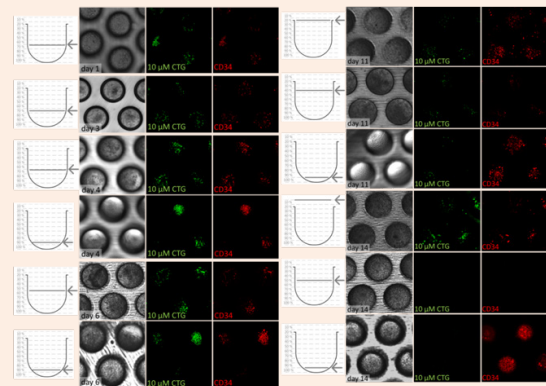


Figure 4: c) Bright field and confocal microscopy image series of 3 microcavities with CD34⁺ cells stained with Cell Tracker Green and with anti-CD34-antibody (red = phycoerythrin) over a time period of 14 days. Left row: height within the microcavity in which the photo was taken, middle row bright field image of the co-culture, two rows on the right, respectively: confocal images of CD34⁺ cells stained with Cell Tracker Green and mouse anti-human-PE (red) [119]. The images show the distribution/migration of CD34⁺ cells within the microcavities with a more regular distribution of cells in the beginning and a migration towards the bottom where extensive proliferation takes place until the end of the experiment.

Natural, Three-Dimensional, Multi-Cell Systems

Natural and modified natural materials have been employed in addition to synthetic materials to provide a 3D-housing for the culture of hematopoietic cells. In one example, a construct termed bio-derived cancellous bone was used. This deproteinized and partially demineralized bone was processed in small pieces (1 x 0.5 x 0.5 cm) and seeded with mesenchymal stromal cells. Seeding of cord blood CD34⁺ cells after 2 weeks resulted in an increase in CD34⁺ cell number (3.3-4.8 fold). CD34⁺/CD38⁺-cells accounted for 82-90% of CD34⁺ cells. After 5 weeks, the CD34⁺/CD38⁺-cells in the 3D system increased when compared with initial numbers. The CFU progenitors were more abundant in the 3D-system compared to the 2D-system (4.6-9.3 fold vs. 1.0-1.5 fold) after 2 weeks in culture, and the colony distribution in the 3D-system showed a higher percentage of BFU-E and CFU-GEMM, whereas the 2D-system was mainly comprised of CFU-GM colonies. The LTC-ICs in the 3D-system showed 5.2-7.2 fold increase over 2 weeks and maintained the immature state of the hematopoietic progenitor cells (HPCs) over 5 weeks [112]. In an attempt to generate blood progenitor cells, agarose was modified with vascular endothelial growth factor. Mouse ESCs were encapsulated in the gel and cultured for 7 days. In the presence of bone morphogenetic protein-4 (BMP-4), cells exposed to immobilized vascular endothelial growth factor α (VEGF α) upregulated mesodermal markers, brachyury and VEGF receptor 2 (T*VEGFR2*) by day 4, and expressed CD34 and CD41 (CD34⁺CD41⁺) on day 7. It was found that immobilized VEGF α treatment was more efficient at inducing blood progenitors (including colony forming cells) on a per molecule basis than soluble VEGF α [113]. Tiwari et al. [114] used bone marrow derived stromal MS-5 cells to grow scaffolds under different culture conditions and 20% O₂ and with or without osteogenic medium (Matrices MX1 to MX4). By decellularizing the culture and drying the scaffolds they generated a matrix for CD34⁺ cells from umbilical cord blood and performed HSC expansion experiments with the four different matrices. HSPCs could be expanded up to 80-fold with differences in primitive marker expression depending on O₂-concentration during the scaffold generation culture. In an even more sophisticated approach, Prewitz et al. [115] stabilized ECM secreted by MSCs over a period of ten days by glass-immobilized maleic anhydride copolymer, functionalized with fibronectin to anchor the extracellular matrix molecules. By this procedure, after decellularization, a stable extracellular matrix could be produced. Compared to plasma-treated tissue culture plastic controls, osteogenic type bone marrow ECM and collagen-rich ECM was able to expand the CD34⁺ cell pool by factor of 2 to 3 and showed positive long-term engraftment in NSG mice. In a different approach, Lai et al. [116] produced a bone-like matrix by encapsulating mouse MSCs (mMSC) in a collagen matrix and subjected the cells to osteogenic differentiation. After three weeks the matrix thus built was decellularized with sodium deoxycholate and reseeded with MSCs and HSCs. It was shown that compared to pure collagen scaffolds, the number of HSCs and the number of closely interacting HSC-MSC pairs in the bone-like matrix was increased.

In Silico-Approach: Mathematical Modelling

Although the simple location of stem cells is not sufficient to

define a niche [117], an *in silico* approach for the recapitulation of HSC homeostasis has been made. For this, a niche with a fixed number of stem cells, capable of producing differentiated cells, and of being able to recover from injury or disease, was modeled.

Two assumptions were implemented,

1. Stem cell behavior was determined by the number of its stem cell neighbors, to account for the fact that cytokines, secreted by cells into the microenvironment are capable of activating quiescent cells into proliferation and differentiation and
2. Each cell had internal counters, which determined stem cell proliferation, stem cell transition into differentiation, as well as a transit time of a differentiated cell before migrating to the peripheral blood. With some more interaction rules, it could be shown that the model is capable of simulating all the basic common sense ground rules of stem cells to proliferate, to remain quiescent and to produce continuous supply of differentiated cells. In addition, the system never died out, indicating that there was always a sufficient density of stem cells contained [118-119].

In an attempt to describe some of the approaches that have been made to gain insight into hematopoiesis and to design artificial niches it seems impossible to engineer "the niche". Instead, at least in the medium term, artificial hematopoietic systems will be specialized systems with some being superior to others in terms of one or more characteristics. However, the field is rapidly advancing and perhaps hematopoiesis can be pinned down to a very few but essential factors or properties that, when applied in the right concentration, at the right time point, will enable us to control hematopoietic stem cell behavior as desired.

Acknowledgement

We would like to thank Patrick Wuchter and Kathryn Melzak for critically reading the manuscript and for language editing. Also, I would like to thank Vera Colditz for preparing Figure 4. We are aware of the fact there is far more research out there related to this field but could not mention it due to space constraints. We acknowledge support by Deutsche Forschungsgemeinschaft and Open Access Publishing Fund of Karlsruhe Institute of Technology.

Conflict of Interest

No potential conflicts of interest, No financial support.

References

- 1 de Bruijn MF, Speck NA, Peeters MC, Dzierzak E (2000) Definitive hematopoietic stem cells first develop within the major arterial regions of the mouse embryo. *Embo J* 19(11): 2465-2474.
- 2 de Bruijn MF, Ma X, Robin C, Ottersbach K, Sanchez MJ, et al. (2002) Hematopoietic stem cells localize to the endothelial cell layer in the midgestation mouse aorta. *Immunity* 16(5): 673-683.
- 3 Boisset JC, van Cappellen W, Andrieu-Soler C, Galjart N, Dzierzak E, et al. (2010) *In vivo* imaging of haematopoietic cells emerging from the mouse aortic endothelium. *Nature* 464(7285): 116-120.
- 4 Dzierzak E, Speck NA (2008) Of lineage and legacy: The development of mammalian hematopoietic stem cells. *Nat Immunol* 9(2): 129-136.

- 5 Li Z, Lan Y, He W, Chen D, Wang J, et al. (2012) Mouse embryonic head as a site for hematopoietic stem cell development. *Cell Stem Cell* 11(5): 663-675.
- 6 Gekas C, Dieterlen-Lievre F, Orkin SH, Mikkola HK (2005) The placenta is a niche for hematopoietic stem cells. *Dev Cell* 8(3): 365-375.
- 7 Ottersbach K, Dzierzak E (2005) The murine placenta contains hematopoietic stem cells within the vascular labyrinth region. *Dev Cell* 8(3): 377-387.
- 8 Kumaravelu P, Hook L, Morrison AM, Ure J, Zhao S, et al. (2002) Quantitative developmental anatomy of definitive haematopoietic stem cells/long-term repopulating units (hsc/rus): Role of the aorta-gonad-mesonephros (agm) region and the yolk sac in colonisation of the mouse embryonic liver. *Development* 129(21): 4891-4899.
- 9 Crisan M, Dzierzak E (2016) The many faces of hematopoietic stem cell heterogeneity. *Development* 143(24): 4571-4581.
- 10 Ugarte F, Forsberg EC (2013) Haematopoietic stem cell niches: New insights inspire new questions. *Embo J* 32(19): 2535-2547.
- 11 Till JE, Mc CE (1961) A direct measurement of the radiation sensitivity of normal mouse bone marrow cells. *Radiat Res* 14: 213-222.
- 12 Worton RG, McCulloch EA, Till JE (1969) Physical separation of hemopoietic stem cells differing in their capacity for self-renewal. *J Exp Med* 130(1): 91-103.
- 13 Dexter TM, Allen TD, Lajtha LG (1977) Conditions controlling the proliferation of haemopoietic stem cells *in vitro*. *J Cell Physiol* 91(3): 335-344.
- 14 Schofield R (1978) The relationship between the spleen colony-forming cell and the haemopoietic stem cell. *Blood Cells* 4(1-2): 7-25.
- 15 Lord BI, Testa NG, Hendry JH (1975) The relative spatial distributions of cfus and cfuc in the normal mouse femur. *Blood* 46(1): 65-72.
- 16 Gong JK (1978) Endosteal marrow: A rich source of hematopoietic stem cells. *Science* 199(4336): 1443-1445.
- 17 Calvi LM, Adams GB, Weibrecht KW, Weber JM, Olson DP, et al. (2003) Osteoblastic cells regulate the haematopoietic stem cell niche. *Nature* 425(6960): 841-846.
- 18 Zhang J, Niu C, Ye L, Huang H, He X, et al. (2003) Identification of the haematopoietic stem cell niche and control of the niche size. *Nature* 425(6960): 836-841.
- 19 Kiel MJ, Yilmaz OH, Iwashita T, Terhorst C, Morrison SJ (2005) Slam family receptors distinguish hematopoietic stem and progenitor cells and reveal endothelial niches for stem cells. *Cell* 121(7): 1109-1121.
- 20 Hordyjewska A, Popiolek L, Horecka A (2015) Characteristics of hematopoietic stem cells of umbilical cord blood. *Cytotechnology* 67(3): 387-396.
- 21 Marianska B (1997) The transplantation of hematopoietic stem cells present in peripheral blood and umbilical cord blood. *Nowa Med* 4: 7-9
- 22 Qian-Lin H, Schall AJ, Thiemann FT, Smogorzewska M, Crooks GM (1995) A functional comparison of CD34 + CD38- cells in cord blood and bone marrow. *Blood* 86(10): 3745-3753.
- 23 Thierry D, Hervatin F, Traineau R, Brossard Y, Stark R, et al. (1992) Hematopoietic progenitors cells in cord blood. *Bone Marrow Transpl* 9(Suppl 1): 101-104.
- 24 Zhou GL, Chen JJ, Lee S, Clark T, Rowley JD, et al. (2001) The pattern of gene expression in human cd34(+) stem/progenitor cells. *Proc Natl Acad Sci USA* 98(24): 13966-13971.
- 25 Kopec Szlezak J, Podstawka U (2001) Cord-blood hematopoietic cd34+ cells. *Acta Haematol Pol* 32: 61-69.
- 26 Smogorzewska EM, Barsky LW, Crooks GM, Wienberg KI (1997) Purification of hematopoietic cells from human bone marrow and umbilical cord blood. *Cent Eur J Immunol* 22: 232-239.
- 27 Brunet de la Grange P, Ivanovic Z, Leprivey Lorgeot V, Praloran V (2002) Angiotensin II that reduces the colony-forming ability of hematopoietic progenitors in serum free medium has an inverse effect in serum-supplemented medium. *Stem Cells* 20(3): 269-271.
- 28 Fasouliotis SJ, Schenker JG (2000) Human umbilical cord blood banking and transplantation: A state of the art. *Eur J Obstet Gynecol Reprod Biol* 90(1): 13-25.
- 29 Stolarek M, Mysliwski A (2005) Stem cells of cord blood. *Post Biol Kom* 32: 375-390.
- 30 Stojko R, Witek A (2005) Umbilical cord blood--a perfect source of stem cells? *Ginekol Pol* 76(6): 491-497.
- 31 Verfaillie CM (2017) Adhesion receptors as regulators of the hematopoietic process. *Blood* 92(8): 2609-2612.
- 32 Lawicki S, Mroczko B, Szmitkowski M (2001) Hematopoietic cytokines as tumor markers. *Postepy Hig Med Dosw* 55(3): 449-465.
- 33 Cicuttini FM, Loudovaris M, Boyd AW (1993) Interactions between purified human cord blood haemopoietic progenitor cells and accessory cells. *Br J Haematol* 84(3): 365-373.
- 34 Wagner JE, Broxmeyer HE, Byrd RL, Zehnbauser B, Schmeckpeper B, et al. (1992) Transplantation of umbilical cord blood after myeloablative therapy: Analysis of engraftment. *Blood* 79(7): 1874-1881.
- 35 Frenette PS, Pinho S, Lucas D, Scheiermann C (2013) Mesenchymal stem cell: Keystone of the hematopoietic stem cell niche and a stepping-stone for regenerative medicine. *Annu Rev Immunol* 31: 285-316.
- 36 Yu VW, Scadden DT (2016) Hematopoietic stem cell and its bone marrow niche. *Curr Top Dev Biol* 118: 21-44.
- 37 Lo Celso C, Scadden DT (2015) The hematopoietic stem cell niche at a glance. *J Cell Sci* 124(pt 21): 3529-3535.
- 38 Nakamura Y, Arai F, Iwasaki H, Hosokawa K, Kobayashi I, et al. (2010) Isolation and characterization of endosteal niche cell populations that regulate hematopoietic stem cells. *Blood* 116(9): 1422-1432.
- 39 Yu VW, Saez B, Cook C, Lotinun S, Pardo Saganta A, et al. (2015) Specific bone cells produce dll4 to generate thymus-seeding progenitors from bone marrow. *J Exp Med* 212(5): 759-774.
- 40 Raaijmakers MH, Mukherjee S, Guo S, Zhang S, Kobayashi T, et al. (2010) Bone progenitor dysfunction induces myelodysplasia and secondary leukaemia. *Nature* 464(7290): 852-857.
- 41 Ehninger A, Trumpp A (2011) The bone marrow stem cell niche grows up: Mesenchymal stem cells and macrophages move in. *J Exp Med* 208(3): 421-428.
- 42 Sugiyama T, Kohara H, Noda M, Nagasawa T (2006) Maintenance of the hematopoietic stem cell pool by cxcl12-cxcr4 chemokine signaling in bone marrow stromal cell niches. *Immunity* 25(6): 977-988.

- 43 Mendez Ferrer S, Michurina TV, Ferraro F, Mazloom AR, Macarthur BD, et al. (2010) Mesenchymal and haematopoietic stem cells form a unique bone marrow niche. *Nature* 466(7308): 829-834.
- 44 Greenbaum A, Hsu YM, Day RB, Schuettpelz LG, Christopher MJ, et al. (2013) Cxcl12 in early mesenchymal progenitors is required for haematopoietic stem-cell maintenance. *Nature* 495(7440): 227-230.
- 45 Ding L, Saunders TL, Enikolopov G, Morrison SJ (2012) Endothelial and perivascular cells maintain haematopoietic stem cells. *Nature* 481(7382): 457-462.
- 46 Ding L, Morrison SJ (2013) Haematopoietic stem cells and early lymphoid progenitors occupy distinct bone marrow niches. *Nature* 495(7440): 231-235.
- 47 Yamazaki S, Ema H, Karlsson G, Yamaguchi T, Miyoshi H, et al. (2011) Nonmyelinating schwann cells maintain hematopoietic stem cell hibernation in the bone marrow niche. *Cell* 147(5): 1146-1158.
- 48 Sacchetti B, Funari A, Michienzi S, Di Cesare S, Piersanti S, et al. (2007) Self-renewing osteoprogenitors in bone marrow sinusoids can organize a hematopoietic microenvironment. *Cell* 131(2): 324-336.
- 49 Omatsu Y, Sugiyama T, Kohara H, Kondoh G, Fujii N, et al. (2010) The essential functions of adipo-osteogenic progenitors as the hematopoietic stem and progenitor cell niche. *Immunity* 33(3): 387-399.
- 50 Bradfute S, Graubert T, Goodell M (2005) Roles of sca-1 in hematopoietic stem/progenitor cell function. *Exp Hematol* 33(7): 836-843.
- 51 Pinho S, Lacombe J, Hanoun M, Mizoguchi T, Bruns I, et al. (2013) Pdgfralpha and cd51 mark human nestin+ sphere-forming mesenchymal stem cells capable of hematopoietic progenitor cell expansion. *J Exp Med* 210(7): 1351-1367.
- 52 Mazo IB, Gutierrez Ramos JC, Frenette PS, Hynes RO, Wagner DD, et al. (1998) Hematopoietic progenitor cell rolling in bone marrow microvessels: Parallel contributions by endothelial selectins and vascular cell adhesion molecule 1. *J Exp Med* 188(3): 465-474.
- 53 Rafii S, Mohle R, Shapiro F, Frey BM, Moore MA (1997) Regulation of hematopoiesis by microvascular endothelium. *Leuk Lymphoma* 27(5-6): 375-386.
- 54 Butler JM, Nolan DJ, Vertes EL, Varnum Finney B, Kobayashi H, et al. (2010) Endothelial cells are essential for the self-renewal and repopulation of notch-dependent hematopoietic stem cells. *Cell Stem Cell* 6(3): 251-264.
- 55 Winkler IG, Sims NA, Pettit AR, Barbier V, Nowlan B, et al. (2010) Bone marrow macrophages maintain hematopoietic stem cell (hsc) niches and their depletion mobilizes hscs. *Blood* 116(23): 4815-4828.
- 56 Albiero M, Poncina N, Ciciliot S, Cappellari R, Menegazzo L, et al. (2015) Bone marrow macrophages contribute to diabetic stem cell mobilopathy by producing oncostatin m. *Diabetes* 64(8): 2957-2968.
- 57 Mendez Ferrer S, Lucas D, Battista M, Frenette PS (2008) Haematopoietic stem cell release is regulated by circadian oscillations. *Nature* 452(7186): 442-447.
- 58 Katayama Y, Battista M, Kao WM, Hidalgo A, Peired AJ, et al. (2006) Signals from the sympathetic nervous system regulate hematopoietic stem cell egress from bone marrow. *Cell* 124(2): 407-421.
- 59 Chow A, Lucas D, Hidalgo A, Mendez Ferrer S, Hashimoto D, et al. (2011) Bone marrow cd169+ macrophages promote the retention of hematopoietic stem and progenitor cells in the mesenchymal stem cell niche. *J Exp Med* 208(2): 261-271.
- 60 Naveiras O, Nardi V, Wenzel PL, Hauschka PV, Fahey F, et al. (2009) Bone-marrow adipocytes as negative regulators of the haematopoietic microenvironment. *Nature* 460(7252): 259-263.
- 61 Kalinkovich A, Spiegel A, Shvitiel S, Kollet O, Jordaney N, et al. (2009) Blood-forming stem cells are nervous: Direct and indirect regulation of immature human cd34+ cells by the nervous system. *Brain Behav Immun* 23(8): 1059-1065.
- 62 Lee Thedieck C, Rauch N, Fiammengio R, Klein G, Spatz JP (2012) Impact of substrate elasticity on human hematopoietic stem and progenitor cell adhesion and motility. *J Cell Sci* 125(pt 16): 3765-3775.
- 63 Choi JS, Mahadik BP, Harley BA (2015) Engineering the hematopoietic stem cell niche: *Frontiers in biomaterial science. Biotechnol J* 10(10): 1529-1545.
- 64 Dao MA, Hashino K, Kato I, Nolte JA (1998) Adhesion to fibronectin maintains regenerative capacity during *ex vivo* culture and transduction of human hematopoietic stem and progenitor cells. *Blood* 92(12): 4612-4621.
- 65 Sagar BM, Rentala S, Gopal PN, Sharma S, Mukhopadhyay A (2006) Fibronectin and laminin enhance engraftability of cultured hematopoietic stem cells. *Biochem Biophys Res Commun* 350(4): 1000-1005.
- 66 Yokota T, Oritani K, Mitsui H, Aoyama K, Ishikawa J, et al. (1998) Growth-supporting activities of fibronectin on hematopoietic stem/progenitor cells *in vitro* and *in vivo*: Structural requirement for fibronectin activities of cs1 and cell-binding domains. *Blood* 91(9): 3263-3272.
- 67 Laluppa JA, McAdams TA, Papoutsakis ET, Miller WM (1997) Culture materials affect *ex vivo* expansion of hematopoietic progenitor cells. *J Biomed Mater Res* 36(3): 347-359.
- 68 Kawashima I, Zanjani ED, Almeida Porada G, Flake AW, Zeng H, et al. (1996) CD34+ human marrow cells that express low levels of kit protein are enriched for long-term marrow-engrafting cells. *Blood* 87(10): 4136-4142.
- 69 Shimizu Y, Ogawa M, Kobayashi M, Almeida Porada G, Zanjani ED (1998) Engraftment of cultured human hematopoietic cells in sheep. *Blood* 91(10): 3688-3692.
- 70 Shpall EJ, Quinones R, Giller R, Zeng C, Baron AE, et al. (2002) Transplantation of *ex vivo* expanded cord blood. *Biol Blood Marrow Transplant* 8(7): 368-376.
- 71 Holst J, Watson S, Lord MS, Eamegdool SS, Bax DV, et al. (2010) Substrate elasticity provides mechanical signals for the expansion of hemopoietic stem and progenitor cells. *Nat Biotechnol* 28(10): 1123-1128.
- 72 Walenda T, Bork S, Horn P, Wein F, Saffrich R, et al. (2010) Co-culture with mesenchymal stromal cells increases proliferation and maintenance of haematopoietic progenitor cells. *J Cell Mol Med* 14(1-2): 337-350.
- 73 Fraser CC, Szilvassy SJ, Eaves CJ, Humphries RK (1992) Proliferation of totipotent hematopoietic stem cells *in vitro* with retention of long-term competitive *in vivo* reconstituting ability. *Proc Natl Acad Sci USA* 89(5): 1968-1972.

- 74 Jiang XS, Chai C, Zhang Y, Zhuo RX, Mao HQ, et al. (2006) Surface-immobilization of adhesion peptides on substrate for *ex vivo* expansion of cryopreserved umbilical cord blood cd34+ cells. *Biomaterials* 27(13): 2723-2732.
- 75 Nolta JA, Smogorzewska EM, Kohn DB (1995) Analysis of optimal conditions for retroviral-mediated transduction of primitive human hematopoietic cells. *Blood* 86(1): 101-110.
- 76 Dykstra B, Ramunas J, Kent D, McCaffrey L, Szumsky E, et al. (2006) High-resolution video monitoring of hematopoietic stem cells cultured in single-cell arrays identifies new features of self-renewal. *Proc Natl Acad Sci USA* 103(21): 8185-8190.
- 77 Kurth I, Franke K, Pompe T, Bornhauser M, Werner C (2009) Hematopoietic stem and progenitor cells in adhesive microcavities. *Integr Biol (Camb)* 1(5-6): 427-434.
- 78 Kurth I, Franke K, Pompe T, Bornhauser M, Werner C (2011) Extracellular matrix functionalized microcavities to control hematopoietic stem and progenitor cell fate. *Macromol Biosci* 11(6): 739-747.
- 79 Lutolf MP, Doyonnas R, Havenstrite K, Koleckar K, Blau HM (2009) Perturbation of single hematopoietic stem cell fates in artificial niches. *Integr Biol (Camb)* 1(1): 59-69.
- 80 Gobaa S, Hoehnel S, Roccio M, Negro A, Kobel S, et al. (2011) Artificial niche microarrays for probing single stem cell fate in high throughput. *Nat Methods* 8(11): 949-955.
- 81 Ahn B, Wang Z, Archer DR, Lam WA (2014) Using microfluidics to investigate hematopoietic stem cell and microniche interactions at the single cell level. *Methods Mol Biol* 1185: 223-233.
- 82 Chua KN, Chai C, Lee PC, Tang YN, Ramakrishna S, et al. (2006) Surface-aminated electrospun nanofibers enhance adhesion and expansion of human umbilical cord blood hematopoietic stem/progenitor cells. *Biomaterials* 27(36): 6043-6051.
- 83 Chua KN, Chai C, Lee PC, Ramakrishna S, Leong KW, et al. (2007) Functional nanofiber scaffolds with different spacers modulate adhesion and expansion of cryopreserved umbilical cord blood hematopoietic stem/progenitor cells. *Exp Hematol* 35(5): 771-781.
- 84 Das H, Abdulhameed N, Joseph M, Sakthivel R, Mao HQ, et al. (2009) *Ex vivo* nanofiber expansion and genetic modification of human cord blood-derived progenitor/stem cells enhances vasculogenesis. *Cell Transplant* 18(3): 305-318.
- 85 Lu J, Aggarwal R, Pompili VJ, Das H (2010) A novel technology for hematopoietic stem cell expansion using combination of nanofiber and growth factors. *Recent Pat Nanotechnol* 4(2): 125-135.
- 86 Li Y, Ma T, Kniss DA, Yang ST, Lasky LC (2001) Human cord cell hematopoiesis in three-dimensional nonwoven fibrous matrices: *In vitro* simulation of the marrow microenvironment. *J Hematother Stem Cell Res* 10(3): 355-368.
- 87 Feng Q, Chai C, Jiang XS, Leong KW, Mao HQ (2006) Expansion of engrafting human hematopoietic stem/progenitor cells in three-dimensional scaffolds with surface-immobilized fibronectin. *J Biomed Mater Res A* 78(4): 781-791.
- 88 Raic A, Rodling L, Kalbacher H, Lee Thedieck C (2014) Biomimetic macroporous peg hydrogels as 3d scaffolds for the multiplication of human hematopoietic stem and progenitor cells. *Biomaterials* 35(3): 929-940.
- 89 Leisten I, Kramann R, Ventura Ferreira MS, Bovi M, Neuss S, et al. (2011) 3D co-culture of hematopoietic stem and progenitor cells and mesenchymal stem cells in collagen scaffolds as a model of the hematopoietic niche. *Biomaterials* 33(6): 1736-1747.
- 90 Mahadik BP, Pedron Haba S, Skertich LJ, Harley BA (2015) The use of covalently immobilized stem cell factor to selectively affect hematopoietic stem cell activity within a gelatin hydrogel. *Biomaterials* 67: 297-307.
- 91 Lee J, Kotov NA (2009) Notch ligand presenting acellular 3d microenvironments for *ex vivo* human hematopoietic stem-cell culture made by layer-by-layer assembly. *Small* 5(9): 1008-1013.
- 92 Jozaki T, Aoki K, Mizumoto H, Kajiwaru T (2010) *In vitro* reconstruction of a three-dimensional mouse hematopoietic microenvironment in the pore of polyurethane foam. *Cytotechnology* 62(6): 531-537.
- 93 Taqvi S, Roy K (2006) Influence of scaffold physical properties and stromal cell coculture on hematopoietic differentiation of mouse embryonic stem cells. *Biomaterials* 27(36): 6024-6031.
- 94 Thevenot PT, Nair AM, Shen J, Lotfi P, Ko CY, et al. (2010) The effect of incorporation of sdf-1alpha into PLGA scaffolds on stem cell recruitment and the inflammatory response. *Biomaterials* 31(14): 3997-4008.
- 95 Cook MM, Futrega K, Osiecki M, Kabiri M, Kul B, et al. (2012) Micromarrows--three-dimensional coculture of hematopoietic stem cells and mesenchymal stromal cells. *Tissue Eng Part C Methods* 18(5): 319-328.
- 96 Fujita A, Migita M, Ueda T, Ogawa R, Fukunaga Y, et al. (2010) Hematopoiesis in regenerated bone marrow within hydroxyapatite scaffold. *Pediatr Res* 68(1): 35-40.
- 97 Bagley J, Rosenzweig M, Marks DF, Pykett MJ (1999) Extended culture of multipotent hematopoietic progenitors without cytokine augmentation in a novel three-dimensional device. *Exp Hematol* 27(3): 496-504.
- 98 Ehring B, Biber K, Upton TM, Plosky D, Pykett M, et al. (2003) Expansion of HPCs from cord blood in a novel 3D matrix. *Cytherapy* 5(6): 490-499.
- 99 Meissner P, Schröder B, Herfurth C, Biselli M (1999) Development of a fixed bed bioreactor for the expansion of human hematopoietic progenitor cells. *Cytotechnology* 30(1-3): 227-234.
- 100 Zandstra PW, Jervis E, Haynes CA, Kilburn DG, Eaves CJ, et al. (1999) Concentration-dependent internalization of a cytokine/cytokine receptor complex in human hematopoietic cells. *Biotechnol Bioeng* 63(4): 493-501.
- 101 Liu L, Sun Z, Chen B, Han Q, Liao L, et al. (2006) *Ex vivo* expansion and *in vivo* infusion of bone marrow-derived Flk-1+CD₃₁-CD₃₄-mesenchymal stem cells: Feasibility and safety from monkey to human. *Stem Cells Dev* 15(3): 349-357.
- 102 Koller MR, Manchel I, Maher RJ, Goltry KL, Armstrong RD, et al. (1998) Clinical-scale human umbilical cord blood cell expansion in a novel automated perfusion culture system. *Bone Marrow Transplant* 21(7): 653-663.
- 103 Wuchter P, Saffrich R, Giselbrecht S, Nies C, Lorig H, et al. (2016) Micro-cavity arrays as an *in vitro* model system of the bone marrow niche for hematopoietic stem cells. *Cell Tissue Res* 364(3): 573-584.

- 104 Wendt D, Marsano A, Jakob M, Heberer M, Martin I (2003) Oscillating perfusion of cell suspensions through three-dimensional scaffolds enhances cell seeding efficiency and uniformity. *Biotechnol Bioeng* 84(2): 205-214.
- 105 Di Maggio N, Piccinini E, Jaworski M, Trumpp A, Wendt DJ, et al. (2011) Toward modeling the bone marrow niche using scaffold-based 3D culture systems. *Biomaterials* 32(2): 321-329.
- 106 Jaroscak J, Goltry K, Smith A, Waters Pick B, Martin PL, et al. (2003) Augmentation of umbilical cord blood (UCB) transplantation with *ex vivo*-expanded UCB cells: Results of a phase 1 trial using the aastromreplisell system. *Blood* 101(12): 5061-5067.
- 107 Torisawa YS, Spina CS, Mammoto T, Mammoto A, Weaver JC, et al. (2014) Bone marrow-on-a-chip replicates hematopoietic niche physiology *in vitro*. *Nat Methods* 11(6): 663-669.
- 108 Faley S, Seale K, Hughey J, Schaffer DK, VanCompernelle S, et al. (2008) Microfluidic platform for real-time signaling analysis of multiple single t cells in parallel. *Lab Chip* 8(10): 1700-1712.
- 109 Faley SL, Copland M, Wlodkowic D, Kolch W, Seale KT, et al. (2009) Microfluidic single cell arrays to interrogate signalling dynamics of individual, patient-derived hematopoietic stem cells. *Lab Chip* 9(18): 2659-2664.
- 110 Marx GH, Carney L, Littlefair M, Sebastian A, Buckle AM (2009) Recreating the hematon: Microfabrication of artificial haematopoietic stem cell microniches *in vitro* using dielectrophoresis. *Biomed Microdevices* 11(1): 143-150.
- 111 Carrion B, Huang CP, Ghajar CM, Kachgal S, Kniazeva E, et al. (2010) Recreating the perivascular niche *ex vivo* using a microfluidic approach. *Biotechnol Bioeng* 107(6): 1020-1028.
- 112 Tan J, Liu T, Hou L, Meng W, Wang Y, et al. (2010) Maintenance and expansion of hematopoietic stem/progenitor cells in biomimetic osteoblast niche. *Cytotechnology* 62: 439-448.
- 113 Rahman N, Purpura KA, Wylie RG, Zandstra PW, Shoichet MS (2010) The use of vascular endothelial growth factor functionalized agarose to guide pluripotent stem cell aggregates toward blood progenitor cells. *Biomaterials* 31(32): 8262-8270.
- 114 Tiwari A, Tursky ML, Mushahary D, Wasnik S, Collier FM, et al. (2013) *Ex vivo* expansion of haematopoietic stem/progenitor cells from human umbilical cord blood on acellular scaffolds prepared from MS-5 stromal cell line. *J Tissue Eng Regen Med* 7(11): 871-883.
- 115 Prewitz MC, Seib FP, von Bonin M, Friedrichs J, Stissel A, et al. (2013) Tightly anchored tissue-mimetic matrices as instructive stem cell microenvironments. *Nat Methods* 10: 788-794.
- 116 Lai W, Li Y, Mak S, Ho F, Chow S, et al. (2013) Reconstitution of bone-like matrix in osteogenically differentiated mesenchymal stem cell-collagen constructs: A three-dimensional *in vitro* model to study hematopoietic stem cell niche. *J Tissue Eng* 4: 2041731413508668.
- 117 Scadden DT (2006) The stem-cell niche as an entity of action. *Nature* 441(7097): 1075-1079.
- 118 Didwania M, Didwania A, Mehta G, Basak GW, Yasukawa S, et al. (2011) Artificial hematopoietic stem cell niche: Bioscaffolds to microfluidics to mathematical simulations. *Curr Top Med Chem* 11(13): 1599-1605.
- 119 Colditz V (2016) Artificial hematopoietic stem cell niches based upon microcavity arrays. Institute of Biological Interfaces-5. Karlsruhe Institute of Technology, Karlsruhe, Germany.