

Bile-induced DNA strand breaks and biochemical analysis of bile acids in an experimental model of anomalous arrangement of the pancreaticobiliary ducts

Katsuhiro Masamune*, Kazufumi Kunitomo[†], Kenji Sasaki*, Keiko Yagi*, Nobuhiko Komi* and Seiki Tashiro*

*First Department of Surgery, The University of Tokushima School of Medicine, Tokushima, Japan ; and

[†]Department of Surgery, Tezuka Hospital, Yuseikai Medical Association, Tokushima, Japan

Abstract : A canine experimental model for the anomalous arrangement of the pancreaticobiliary ducts (APBD) was made to investigate the effects of bile acids on carcinogenesis. Seven adult mongrel dogs underwent dorsal pancreatico-cholecystostomy to serve as a functional model for APBD, and six dogs underwent the same procedure with the pancreatic duct ligated as a control group. Bile from the gallbladder was taken 14 months after surgery for bile acid analysis by HPLC. DNA strand breaks in HeLa cells induced by the bile were also investigated *in situ* by nick translation method. As a result, the fraction of cholic acid tended to be lower, and that of deoxycholic acid slightly higher in APBD-dogs (N.S.). The ursodeoxycholic acid percentage in APBD-dogs significantly decreased compared with that in the control and normal dogs ($p < 0.05$). Extremely high frequency of DNA strand breaks was shown in only two out of seven APBD-dogs. In those two dogs, the cholic acid percentage decreased and that of deoxycholic acid increased extremely. These findings suggest that the alteration of the bile composition in APBD caused frequent DNA strand breaks and repair which might lead to gene mutation and biliary tract carcinoma. *J. Med. Invest.* 44 : 47-51, 1997

Key Words : anomalous arrangement of the pancreaticobiliary ducts, bile acid fractions, DNA strand breaks, *in situ* nick translation

INTRODUCTION

Anomalous arrangement of the pancreaticobiliary ducts (APBD) is recognized as a condition commonly associated with congenital biliary dilatation (CBD, so-called choledochal cyst). The incidence of biliary tract carcinoma in patients with APBD is higher than in the general population, and onset of biliary carcinoma occurs at a younger age in patients with APBD than in those without APBD(1-3). Histopathological examination of excised choledochal cysts has frequently demonstrated the presence of metaplasia of the epithelium, and the prevalence of such metaplasia increases with age(4). However, despite these observations, there is no direct evidence linking metaplasia with the development of biliary carcinoma(4,5).

Our previous studies on experimental APBD in dogs suggested that pancreatic juice enzymes and bacteria

infecting the bile deconjugated detoxified mutagens in the bile and induced bile mutagenicity(6), and also demonstrated the presence of atypical biliary tract epithelium and DNA ploidy abnormalities(7). The present study was undertaken to investigate the etiological factors of biliary carcinoma by determining the frequency of DNA strand breaks in HeLa cells induced by bile and the biochemical analysis of bile acids in a canine model for APBD.

The nick translation method has become popular in radioisotope-labeling of DNA probes(8). The principle of this technique is based on the activity of *E. coli* DNA polymerase I to bind to a nick containing 3'-OH terminus and substitute the nucleotides one by one with externally added radioactive nucleotides in the 5' to 3' direction. The amount of this reaction is dependent on the number of nicks and hence on the action of DNase I which is usually added to the reaction mixture. This technique has also been used to detect DNA strand breaks in carcinogen-treated cells(9) and bleomycinexposed HeLa cells(10). Anai and Maehara, *et al.* (11,12) applied this technique to detect DNA strand scission in HeLa cells following heat

Received for publication March 27, 1997 ; accepted April 10, 1997.

¹ Address correspondence and reprint requests to Katsuhiro Masamune, M.D., First Department of Surgery, The University of Tokushima School of Medicine, 3-18-15 Kuramoto-cho, Tokushima, Japan.

treatment and induced radiation. In the present study, we used this method for *in situ* detection of the single DNA strand scission in HeLa cells induced by bile.

MATERIALS AND METHODS

Canine model and samples

Eight male and five female adult mongrel dogs weighing between 9.3-15.6 kg were used. The animals were divided into two groups. Group A consisted of seven dogs which were prepared as the APBD-model. After they were anesthetized by intravenous injection of 25 mg/kg body weight of sodium pentobarbital, the duodenum was incised to make a full thickness flap of the wall (8-10 mm in diameter), including the papilla of the dorsal pancreatic duct. The flap was then anastomosed with the gallbladder with interrupted sutures to obtain a functional model for APBD (pancreatico-cholecystostomy, Figure 1). Group B consisted of six dogs as the control group. They were also subjected to the pancreatico-cholecystostomy as described above, however the dorsal pancreatic duct was doubly ligated proximal to the anastomosis to cut off the flow of pancreatic juice into the gallbladder. The dogs were fed a regular pellet diet (Marubeni Animal Food Co., Ltd., Tokyo, Japan) and sacrificed 14 months after surgery. Samples of normal gallbladder bile were obtained from an additional seven normal dogs with a 21 gauge needle immediately after laparotomy. All bile samples were passed through a Millipore filter (pore size 0.45 μm) to remove bacteria and stored at -80°C until use.

Amylase levels in the gallbladder bile were measured by enzymatic assay to confirm the patency of the pancreatico-cholecystostomy. The bile acid fractions were obtained by an immobilized enzyme column method, and measured by high

performance liquid chromatography (HPLC) (13). Statistical analysis was performed using Student's or Welch's *t*-test.

Cell culture and treatment

HeLa cells were maintained as monolayers on plastic dishes in Eagle's minimum essential medium (MEM) containing L-glutamine (292 mg/l) and 10% fetal calf serum supplemented with streptomycin, penicillin and amphotericin B. For the nick translation assay (11,12) 1×10^5 cells were plated in two chambered Lab-Tek tissue culture chamber/slide (Nunc, Inc., Naperville, IL, USA) and cultured for 48 hours in an atmosphere containing 5% CO_2 and 95% air at 37°C . The cells were then exposed to bile samples diluted 10^4 times with MEM for three hours at 37°C . The plastic chambers were removed from the slides after the exposure, and the cells were rinsed with phosphate-buffered saline and fixed with ethanol/acetic acid (3 : 1, v/v) for 10 minutes at room temperature.

In situ nick translation

After fixation, the slides were overlaid with $15 \mu\text{l}$ of a nick translation mixture and incubated for 10 minutes at room temperature. The nick translation mixture contained 50 mM Tris-HCl pH 7.5, 5 mM MgCl_2 , 10 mM 2-mercaptoethanol, 200 U/ml of *E. coli* DNA polymerase I (endonuclease-free; Boehringer Mannheim GmbH Biochemica, Mannheim, Germany), 30 μM each of dATP, dGTP, dCTP and dTTP (Sigma Chemical Co., St. Louis, MO, USA) and 0.1 μM ^3H -labeled dTTP (104 Ci/mmol; Amersham Japan, Tokyo, Japan). The reaction for nick translation was terminated by washing the slides with 50 mM Tris-HCl pH 7.5. The slides were then dehydrated in ethanol and allowed to dry. The dried slides were coated with a nuclear emulsion (Sakura NR-M 2, Konica Co., Tokyo, Japan) and stored in a dark box at 4°C for 3 days. The autoradiographs were developed and the nuclei counter stain with hematoxylin was added. The grain density of 100 nuclei selected at random was measured microscopically using an image processing and analyzing system (Software: NIH Image; online-software, hardware: Macintosh IIfx; Apple Computer Japan, Inc., Tokyo, Japan). Grain density was expressed as a ratio compared with the density of 100 untreated cells (grain-density ratio).

RESULTS

Amylase level in gallbladder bile

The level of amylase in the gallbladder bile ranged from 41800 to 176500 (mean \pm S.D. :

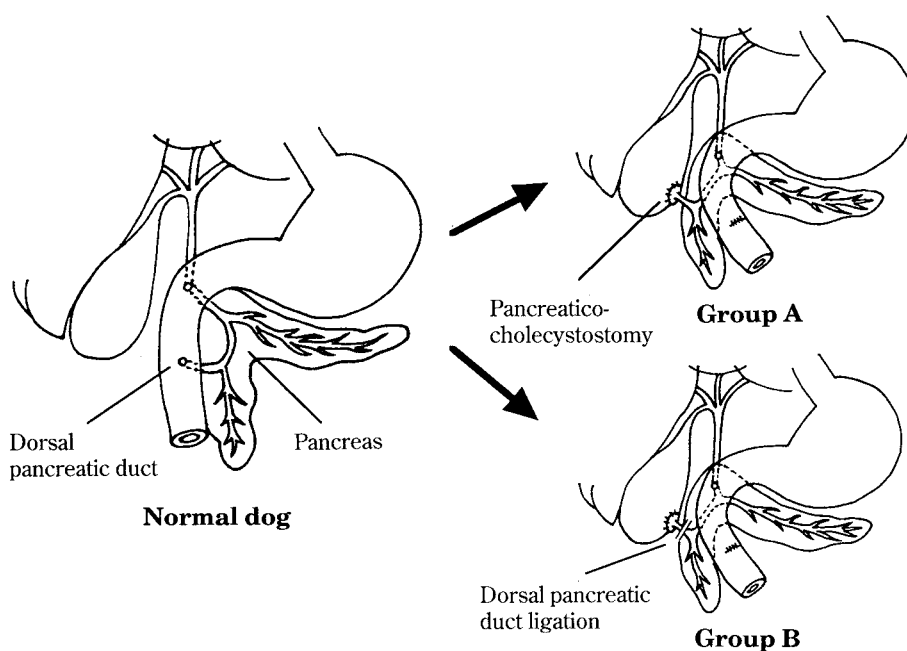


Fig.1. Preparation of experimental models in dogs: group A was prepared for APBD by pancreatico-cholecystostomy. Group B was also subjected to pancreatico-cholecystostomy, however the dorsal pancreatic duct was doubly ligated proximal to the anastomosis to cut off the flow of pancreatic juice into the gallbladder.

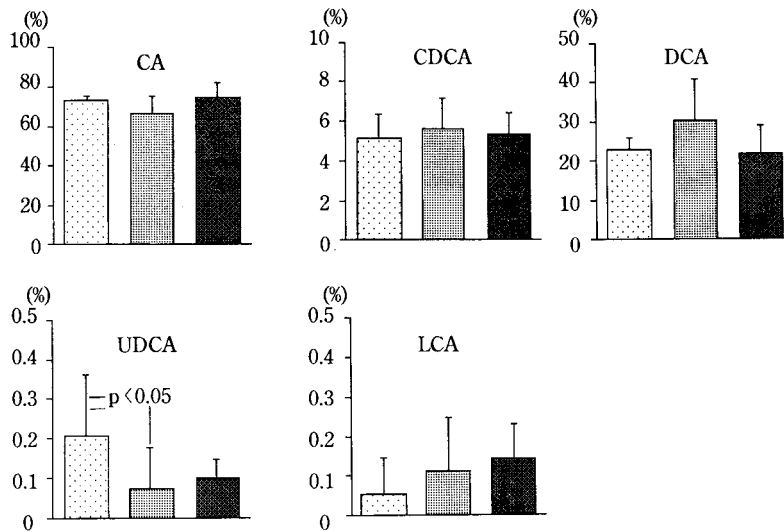


Fig. 4. Bile acid fractions in gallbladder bile of the normal dogs, group A, and group B. □, normal dogs (n=7); ▨, group A (n=7); ▩, group B (n=6).

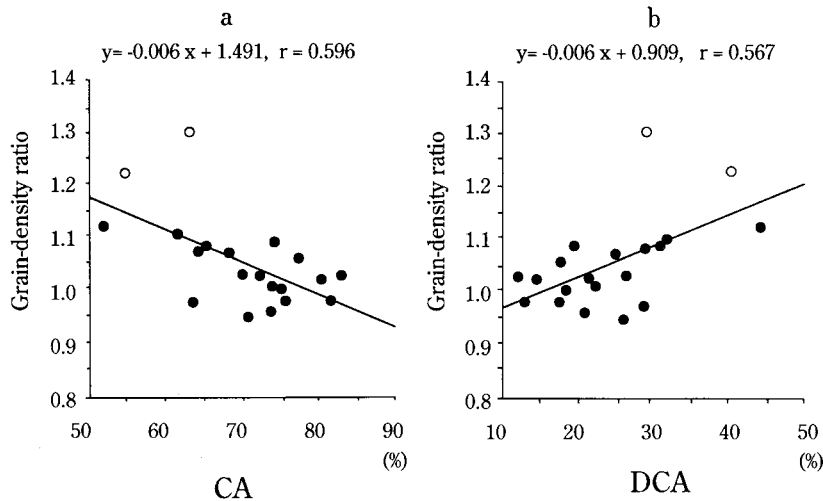


Fig. 5. Correlation between the grain-density ratio and CA (a) or DCA (b). ○, two samples showed higher grain density ratios; ●, the other samples.

enhancing effects (15-19). Revelle *et al.* (20) and Funabiki *et al.* (21) recently reported increased levels of secondary bile acids, DCA and LCA, in the bile from cystic dilated bile duct with APBD regardless of the presence or absence of malignancy. Kato *et al.* (22) also demonstrated that the whole bile duct contents from six out of 12 patients with APBD showed positive mutagenic activity by the *Bacillus subtilis* rec assay. These findings suggested that increased level of secondary bile acids in the bile was one of the etiological factors of biliary carcinoma in patients with APBD. APBD is a condition in which the common duct is abnormally long and the junction of the common bile duct and the pancreatic duct is located outside the duodenal wall. The primary physiological abnormalities in APBD are the reflux of pancreatic juice into the biliary tract and stagnation of the bile and pancreatic juice mixture. Our experimental model does not exactly duplicate the anatomical abnormality found in human APBD but it is similar from the pathophysiological point of view as shown by the significantly high level of

amylase in the bile from the experimental group. In the present study, the level of UDCA fraction was significantly decreased in the APBD-dogs. This phenomenon was interesting because the UDCA was reported to have a protecting effect against some mutagens in gastric mucosa (23) and liver cells (24-26). Only two dogs in the APBD-dogs showed a marked increase of DNA strand breaks. In addition, the level of CA decreased and that of DCA increased significantly in these two dogs. The grain-density ratio showed a negative correlation with the level of CA and a positive correlation with that of DCA in all dogs. Stasis of the bile may contribute to bacterial overgrowth and to the generation of unconjugated secondary bile acids. Furthermore, these bacteria and their products or unconjugated secondary bile acids or unidentified bile acid metabolites may participate in the development of biliary metaplasia and carcinoma in APBD (20). Histopathologically, hyperplasia was observed in all APBD-dogs and metaplasia in two, although there was no neoplastic growth. We cannot explain precisely the cause of alteration of bile acid composition, increase of DCA and decrease of CA and UDCA, in the present study. In only two dogs in group A, a markedly high grain-density ratio was shown by *in situ* nick translation. Bile acid composition in the two dogs was also altered significantly. DNA strand breaks do not cause carcinogenesis directly. However, fre-

quent DNA breaks, might be caused by the alteration of bile acid composition, and the resulting repairing action would increase the chance of gene mutation such as oncogene mutations which can lead to carcinogenesis in APBD.

ACKNOWLEDGMENTS

The authors thank Tokyo Tanabe Pharmaceutical Co., Ltd. for measuring the amylase. We also thank Y. Maehara, MD, and H. Anai, MD, for their helpful discussions.

REFERENCES

1. Komi N, Tamura T, Miyoshi Y, Kunitomo K, Udaka H, Takehara H: Nationwide survey of cases of choledochal cyst. Analysis of coexistent anomalies, complications and surgical treatment in 645 cases. *Surg Gastroenterol* 3: 69-73, 1984
2. Todani T, Watanabe Y, Hujii M, Toki A, Uemura S, Koike Y, Inoue T: Carcinoma arising from the bile

- duct in choledochal cyst and anomalous arrangement of the pancreatobiliary ductal union. Tan to Sui (in Japanese) 6 : 525-535, 1985
3. Kimura K, Ohto M, Saisho H, Unozawa T, Tsuchiya Y, Morita M, Ebara M, Matsutani S, Okuda K: Association of gallbladder carcinoma and anomalous pancreatobiliary ductal union. Gastroenterology 89 : 1258-1265, 1985
 4. Komi N, Tamura T, Miyoshi Y, Hino M, Yada S, Kawahara H, Udaka H, Takehara H: Histochemical and immunohistochemical studies on development of biliary carcinoma in forty-seven patients with choledochal cyst: Special reference to intestinal metaplasia in the biliary duct. Jpn J Surg 15 : 273-278, 1985
 5. Rossi RL, Silverman ML, Braasch JW, Munson JL, ReMine SG: Carcinoma arising in cystic conditions of the bile ducts. A clinical and pathologic study. Ann Surg 205 : 377-384, 1987
 6. Dong Q, Kinouchi T, Kunitomo K, Kataoka K, Matin MA, Akimoto S, Komi N, Ohnishi Y: Mutagenicity of the bile of dogs with an experimental model of an anomalous arrangement of the pancreatobiliary duct. Carcinogenesis 14 : 743-747, 1993
 7. Matin MA, Kunitomo K, Komi N: Experimental studies on carcinogenesis in anomalous arrangement of the pancreatobiliary ducts. Tokushima J Exp Med 39 : 13-23, 1992
 8. Rigby PWJ, Dieckmann M, Rhodes C, Berg P: Labeling deoxyribonucleic acid to high specific activity *in vitro* by nick translation with DNA polymerase I. J Mol Biol 113 : 237-251, 1977
 9. Nose k, Okamoto H: Detection of carcinogen-induced DNA breaks by nick translation in permeable cells. Biochem Biophys Res Commun 111 : 383-389, 1983
 10. Iseki S, Mori T: Histochemical detection of DNA strand scissions in mammalian cells by *in situ* nick translation. Cell Biol Int Rep 9 : 471-477, 1985
 11. Anai H, Maehara Y, Sugimachi K: *In situ* nick translation method reveals DNA strand scission in HeLa cells following heat treatment. Cancer Lett 40 : 33-38, 1988
 12. Maehara Y, Emi Y, Anai H, Sakaguchi Y, Kohnoe S, Tsujitani S, Sugimachi K: Adriamycin-induced DNA strand break in HeLa and in P388 leukaemia cells detected using *in situ* nick translation. J Pathol 159 : 323-327, 1989
 13. Okuyama S: Analysis of free, glycine- and taurine-conjugated individual bile acids using high performance liquid chromatography and immobilized 3 α -hydroxysteroid dehydrogenase in column form. Rinsho Byouri (in Japanese) 29 : 446-458, 1981
 14. Cook JW, Kennaway EL, Kennaway NM: Production of tumors in mice by deoxycholic acid. Nature 145 : 627, 1940
 15. Chomchai C, Bhadrachari N, Nigro ND: The effect of bile on the induction of experimental intestinal tumors in rats. Dis Col & Rect 17 : 310-312, 1974
 16. Narisawa T, Magadia NE, Weisburger JH, Wynder EL: Promoting effect of bile acid on colon carcinogenesis after intrarectal instillation of N-methyl-N'-nitro-N-nitrosoguanidine in rats. J Natl Cancer Inst 53 : 1093-1097, 1974
 17. Hill MJ, Drasar BS, Williams RE, Meade TW, Cox AG, Simpson JEP, Morson BC: Faecal bile-acids and clostridia in patients with cancer of the large bowel. Lancet 1 : 535-538, 1975
 18. Trunen MJ, Kivilaakso EO: Increased risk of colorectal cancer after cholecystectomy. Ann Surg 194 : 639-641, 1981
 19. Wilpart M, Mainguet P, Maskens A, Roberfroid M: Mutagenicity of 1,2-dimethylhydrazine towards Salmonella typhimurium, co-mutagenic effect of secondary biliary acids. Carcinogenesis 4 : 45-48, 1983
 20. Reveille RM, Stiegmann VG, Everson GT: Increased secondary bile acids in a choledochal cyst: Possible role in biliary metaplasia and carcinoma. Gastroenterology 99 : 525-527, 1990
 21. Funabiki T, Sugiue K, Matsubara T, Amano H, Ochiai M: Bile acids and biliary carcinoma in pancreatobiliary maljunction. Keio J Med 40 : 118-122, 1991
 22. Kato T, Matsuda K, Kayaba H, Enomoto S, Hebiguchi T, Koyama K, Hachiya N, Takizawa Y: Pathology of anomalous junction of the pancreatobiliary ductal system: Mutagenicity of the contents of the biliary tract and nuclear atypia of the biliary epithelium. Keio J Med 38 : 167-176, 1989
 23. Ota S, Tsukahara H, Terano A, Hata Y, Hiraishi H, Mutoh H, Sugimoto T: Protective effect of tauroursodeoxycholate against chenodeoxycholate-induced damage to cultured rabbit gastric cells. Dig Dis Sci 36 : 409-416, 1991
 24. Nakai T, Katagiri K, Hoshino M, Hayakawa T, Ohiwa T: Microtubule-independent choleresis and anti cholestatic action of tauroursodeoxycholate in colchicine-treated rat liver. Biochem J 288 : 613-617, 1992
 25. Okolicsanyi LF: Cytoprotection with ursodeoxycholic acid: effect in chronic non-cholestatic and chronic cholestatic liver disease. Ital J Gastroenterol 24 : 31-35, 1992
 26. Human DM: Hepatoprotective properties of ursodeoxycholic acid. Gastroenterology 104 : 1865-1870, 1993