

CASE REPORT

Bicuspid aortic valve endocarditis complicated by perivalvular abscess

Tomoya Hara, Takeshi Soeki, Toshiyuki Niki, Kenya Kusunose, Koji Yamaguchi, Yoshio Taketani, Takashi Iwase, Hirotsugu Yamada, Tetsuzo Wakatsuki, Masashi Akaike, and Masataka Sata

Department of Cardiovascular Medicine, Institute of Health Biosciences, the University of Tokushima Graduate School, Tokushima, Japan

Abstract : A 37-year-old man presenting with fever and chest pain was admitted to our hospital. Electrocardiogram showed sinus tachycardia and complete left bundle branch block. Transthoracic echocardiogram showed infective endocarditis in the bicuspid aortic valve, complicated by multiple hyperechoic vegetations and severe aortic regurgitation. Blood cultures were negative and intravenous empiric antibiotic therapy was begun. However, fever lasted for 7 days and follow-up echocardiography revealed a newly emerged perivalvular abscess. The patient eventually underwent an urgent aortic root replacement that confirmed the echocardiographic findings. Our case report emphasizes that all patients with suspected aortic valve endocarditis should undergo early and follow-up echocardiographic studies. *J. Med. Invest.* 59 : 261-265, August, 2012

Keywords : *bicuspid aortic valve (BAV), infectious endocarditis (IE), perivalvular abscess (PVA), echocardiography*

INTRODUCTION

We present the case of a 37-year-old man with bicuspid aortic valve endocarditis complicated by a perivalvular abscess. He had a history of untreated heart murmur in childhood and untreated heart enlargement in recent years. We briefly discuss the main features of perivalvular abscess complicating infective endocarditis (IE).

Myocardial abscess formation is a severe complication of IE that is associated with high mortality. The aortic valve and its adjacent ring are more susceptible to abscess formation and complications of perivalvular extension of the infection than the

mitral valve. Bicuspid aortic valve (BAV) endocarditis is also more frequently associated with these types of complications than the tricuspid aortic valve (1).

We report a case of BAV endocarditis complicated by perivalvular extension of the infection with abscess formation.

CASE PRESENTATION

A 37-year-old man presented to our hospital with episodes of persistent fever episodes (>38°C) and chest pain over the past 2 weeks. In addition, he had a medical history of untreated heart murmur 30 years previously, and untreated heart enlargement on chest X-ray for the past 5 years.

On physical examination he had an arterial blood pressure of 100/60 mmHg, regular tachycardia of 100-110 beats/min, and arterial saturation of 96%

Received for publication February 8, 2012 ; accepted February 23, 2012.

Address correspondence and reprint requests to Takeshi Soeki, M.D., Department of Cardiovascular Medicine, Institute of Health Biosciences, the University of Tokushima Graduate School, 3-18-15 Kuramoto-cho, Tokushima 770-8503, Japan and Fax : +81-88-633-7894.

(room air). He had a systolic murmur, Levine 3/6, at the right cardiac base and a diastolic murmur at the left parasternal border, Levine 2/6. No crackles were audible in the pulmonary fields.

Chest X-ray showed significant cardiovascular enlargement, and 12-lead electrocardiogram (ECG) revealed sinus tachycardia with a mean rate of 100 beats/min and complete left bundle-branch block. He immediately underwent transthoracic echocardiography, which revealed mild near-circumferential pericardial effusion, a normal-sized left ventricle (LV) with concentric hypertrophy but normal systolic function, and a BAV with multiple hyperechoic vegetations. There was also severe aortic stenosis with a peak gradient of 80 mmHg and severe aortic regurgitation (2-3/4).

Laboratory data showed an increased white blood cell count (17,900 / μ L) along with elevated C-reactive protein (11.84 mg/dL) and erythrocyte sedimentation rate (68 mm/hr). All eight blood cultures taken were negative (prior to hospitalization, levofloxacin 500 mg/day and ceftriaxone 1 g/day had been administered). Based on the clinical, laboratory, and echocardiographic findings, we made the diagnosis of culture-negative IE.

The patient received antibiotic treatment with gentamycin 1 mg/kg every 8 hours and ampicillin 2 g every 4 hours, according to the current guidelines of the Japanese Circulation Society. Seven days later, fever and C-reactive protein level had improved, but still remained moderately high (approximately 37°C and 5-6 mg/dL, respectively).

During this time, multiple follow-up echocardiographic studies were performed, 1, 4, and 8 days after the initial antibiotic administration (Fig. 1). The echocardiographic study on day 1 revealed a diffusely thickened aortic root wall and intramural multiple hypoechoic cavities near the aortic annulus. Follow-up studies on days 4 and 8 revealed that these cavities were generally enlarged and had fused with each other. Furthermore, we detected color Doppler signals inside of these cavities, which looked connected to the aortic lumen. Unfortunately, transesophageal echocardiography had difficulty detecting these cavities. To examine the cavities in greater detail, a multi-detector computed tomography (MDCT) scan was performed; this showed a large abscess cavity that extended from the posterolateral aortic wall to the anterolateral side of aorta (Fig. 2).

The patient was referred for an emergency operation and underwent replacement of the aortic

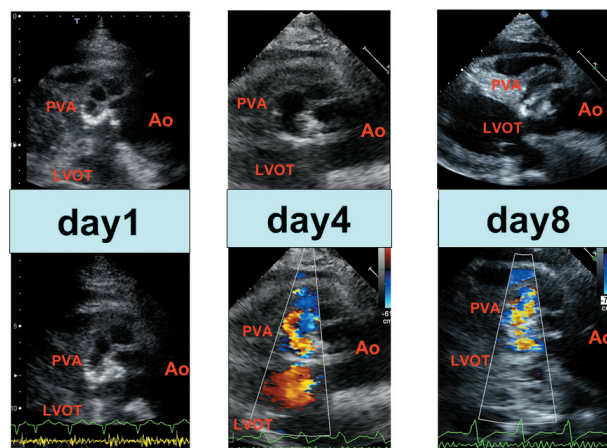


Figure 1. Follow-up transthoracic echocardiography with long-axis view focused on the region from left ventricular outflow tract to root of aorta, performed 1, 4, and 7 days after administration of empiric antibiotics. Upper figures show a bicuspid aortic valve with large echolucent perivalvular abscess formation; cavities tended to be enlarged and fused with each other. Lower figures showing color Doppler signals inside these cavities, which appeared to be connected to the aortic lumen. Ao, root of aorta; LVOT, left ventricular outflow tract; PVA, perivalvular abscess cavity.

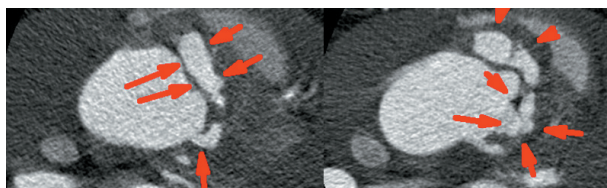


Figure 2. Multi-detector computed tomography (MDCT) axial view at the level of the aortic root. The figure shows a large abscess cavity extending from the posterolateral aortic wall to the anterolateral side of the aorta (red arrows).

root. The BAV showed severe degeneration, calcification, and vegetations. Almost half the circumference of the valve ring was completely absent, and both old and new thrombi-filled large abscess cavities were identified (Fig. 3). At the subaortic valve lesion, a small ventricular septal defect (VSD) (Kirklin type I) was found (it remains to be determined whether the VSD was congenital or an iatrogenic formation associated with operative procedure). We performed direct closure of the VSD, replaced the aortic valve (#27 Plima-Plus stentless bioprosthesis), and reconstructed the left ventricular outflow tract (with removal of abscess tissues, interposition of a vascular prosthesis (28 mm J-Graft Shield Neo), reconstruction of the coronary ostium with the Carrel patch technique).

Surgical pathology examination of the excised

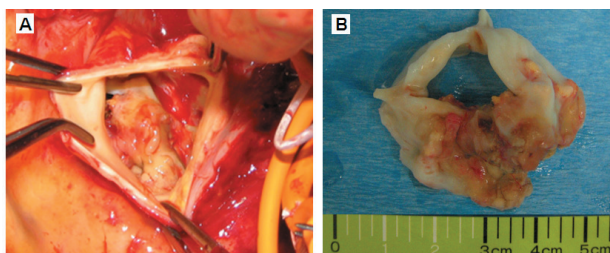


Figure 3A : Intraoperative photograph demonstrating bicuspid aortic valve involvement viewed through the aorta. After resection of the aortic valve, the abscess was seen involving the aortic root. 3B : Surgically excised bicuspid aortic valve. Gross view of bicuspid aortic valve showing coarse vegetations and calcific deposits.

valve showed two severely damaged semilunar leaflets with diffuse severe calcific deposits. On histologic examination, only severe calcification and clusters of Gram-positive cocci were detected. Cultures resulted in no bacterial growth and the causative microorganism was not identified. The patient had an uncomplicated postoperative course and there was no reactivation of infection.

DISCUSSION

There is increasing awareness that patients with BAVs are at high risk for cardiovascular complications such as aortic valve dysfunction (2-6), IE (5), ascending aortic aneurysm (6-8) and aortic dissection (9, 10). As BAV is one of the most common congenital cardiac abnormalities (11-13), the frequency of cardiac and vascular events associated with BAV might be greater than the combined cardiovascular morbidity of all other congenital heart diseases (2). High rates of cardiovascular adverse events in adults with BAV have been recently reported by two large-scale studies (14, 15).

Previous small-scale necropsy and surgical series have suggested that 25% to 50% of all infected aortic valves were bicuspid (16, 17). In a study by Lamas and Eykyn, BAV IE represented 12% of patients with native valve IE (5). In a cohort of 310 patients with aortic valve IE (1), a BAV was identified in 16% of cases. In a study including 642 adults with BAV, IE occurred in 13 patients over 9 years of follow-up (15), while in another study, 4 out of 212 patients with BAV developed IE during a follow-up of 20 years (14). A recent multicentre study (1) demonstrated that of 148 patients with BAV, 4 (2.7%) were diagnosed with IE. All four patients

had significant regurgitation and underwent aortic valve replacement. These observations suggest that the risk of IE in adults with BAV is relatively low, whereas BAV is common in cases with confirmed aortic valve IE.

Our case of BAV IE was complicated by perivalvular abscess and eventually required surgical intervention. A perivalvular abscess was identified in 50% of the BAV IE patients in the study by Tribouilloy *et al.* (1) compared with 30% in the study by Lamas and Eykyn (5). Periannular complications were observed in 14 of the 22 patients with BAV IE (64%) in the report by Kahveci *et al.* (18). Moreover, Tribouilloy *et al.* found that the presence of a BAV was independently associated with abscess formation in aortic valve IE (1). This finding is important as patients with aortic valve IE complicated by perivalvular abscesses are more likely to undergo surgery (19), which is consistent with the present case.

Early identification of abscesses is particularly important since it has been shown that surgery may improve outcomes by preventing widespread tissue destruction. Daniel *et al.* (20) studied 44 patients with proven abscesses; 28.3% of abscesses could be identified using transthoracic echocardiography while 87% were diagnosed with the transesophageal approach. In a larger-scale series (21), investigators identified 36% of abscesses using the transthoracic technique and 80% using the transesophageal approach. Therefore, current European guidelines on the prevention, diagnosis, and treatment of infectious endocarditis from 2009 (22) recommend transesophageal echocardiography (TEE) in most adults with suspected IE, even in the presence of a positive transthoracic echocardiography (TTE) exam, due to its higher sensitivity and specificity for the diagnosis and assessment of intracardiac lesions (class IIa, level of evidence C). However, some previous reports have indicated that TTE is an accurate method for the diagnosis of abscesses associated with IE, especially in patients without prosthetic valves (23). In addition, recent technological innovation has rendered TTE more sensitive for the diagnosis of IE. In the present case, TTE very clearly revealed a diffusely thickened aortic root wall and intramural multiple hypoechoic cavities near the aortic annulus. We performed TTE frequently to monitor the progression of IE lesions and found that cavities tended to grow larger and fuse with each other. TTE is superior to TEE for frequent follow-up and detection of lesion progression so as to determine the appropriate time for surgery, in a

case that clear images can be acquired by the transthoracic echocardiography. Furthermore, TEE is not without risks. A previous report described a patient with impending rupture perivalvular abscess who died during a TEE study (24). Thus, TEE is not completely safe in these situations and is not suitable for frequent follow-up of perivalvular abscesses.

In the present case, MDCT was also useful for examining the cavities in detail. In a recent study (25) using a per-valve-based analysis, MDCT had a sensitivity of 96% and a specificity of 97% for detecting vegetations and abscesses/pseudoaneurysms, compared with 100% and 100%, respectively, for surgery. The accuracy of MDCT did not differ significantly from TEE, but did provide better anatomic information than TEE in terms of perivalvular involvement (i.e., myocardial, pericardial, and coronary sinus regions), which was helpful for planning surgery.

Patients with identified abscesses associated with IE are usually candidates for more aggressive therapy, including early surgery, than those without an abscess. It is important for the surgeon to know whether a perivalvular abscess is present because if it is, the operative procedure is more complicated and is also associated with higher morbidity and mortality than in operations for simple valve replacement or repair for active IE (26). It has been shown that endocarditis caused by *Staphylococcus aureus* and other virulent microorganisms on valves in the left side of the heart are best treated with early surgery (26-28). In a large merged database on native valve endocarditis, the overall mortality was higher in patients with *Staphylococcus aureus* endocarditis than in those with other bacteria (20% vs. 12%, $p=0.001$), but surprisingly, fewer patients infected with *Staphylococcus aureus* had surgery (26% vs. 39%, $p=0.001$) (27). In the present case, all the blood cultures were negative, probably due to empiric pre-hospital antibacterial treatment, and thus provided no useful information preoperatively.

CONFLICT OF INTEREST

No conflict exists for each author.

REFERENCES

1. Tribouilloy C, Rusinaru D, Sorel C, Thuny F, Casalta JP, Riberi A, Jau A, Gouriet F, Collart

- F, Caus T, Raoult D, Habib G : Clinical characteristics and outcome of infective endocarditis in adults with bicuspid aortic valves : a multi-centre observational study. *Heart* 96 : 1723-1729, 2010
2. Ward C : Clinical significance of the bicuspid aortic valve. *Heart* 83 : 81-85, 2000
3. Subramanian R, Olson LJ, Edwards WD : Surgical pathology of pure aortic stenosis : a study of 374 cases. *Mayo Clin Proc* 59 : 683-690, 1984
4. Mautner GC, Mautner SL, Cannon RO 3rd, Hunsberger SA, Roberts WC : Clinical factors useful in predicting aortic valve structure in patients >40 years of age with isolated valvular aortic stenosis. *Am J Cardiol* 72 : 194-198, 1993
5. Lamas CC, Eykyn SJ : Bicuspid aortic valve : a silent danger : analysis of 50 cases of infective endocarditis. *Clin Infect Dis* 30 : 336-341, 2000
6. Nistri S, Sorbo MD, Marin M, Palisi M, Scognamiglio R, Thiene G : Aortic root dilatation in young men with normal functioning bicuspid aortic valves. *Heart* 82 : 19-22, 1999
7. Hahn RT, Roman MJ, Mogtader AH, Devereux RB : Association of aortic dilation with regurgitant, stenotic and functionally normal bicuspid aortic valves. *J Am Coll Cardiol* 19 : 283-288, 1992
8. Pachulski RT, Weinberg AL, Chan KL : Aortic aneurysm in patients with functionally normal or minimal stenotic bicuspid aortic valve. *Am J Cardiol* 67 : 781-782, 1991
9. Roberts CS, Roberts WC : Dissection of the aorta associated with congenital malformation of the aortic valve. *J Am Coll Cardiol* 17 : 712-716, 1991
10. Edwards WD, Leaf DS, Edwards JE : Dissecting aortic aneurysm associated with congenital bicuspid aortic valve. *Circulation* 57 : 1022-1025, 1978
11. Roberts WC : The congenitally bicuspid aortic valve : a study of 85 autopsy cases. *Am J Cardiol* 26 : 72-83, 1970
12. Fenoglio JJ Jr, McAllister HA Jr, DeCastro CM, Davia JE, Cheitlin MD : Congenital bicuspid aortic valve after the age 20. *Am J Cardiol* 39 : 146-149, 1977
13. Fedak PW, Verma S, David TE, Leask RL, Weisel RD, Butany J : Clinical and pathophysiological implications of a bicuspid aortic valve. *Circulation* 106 : 900-904, 2002
14. Michelena HI, Desjardins VA, Avierinos JF,

- Russo A, Nkomo VT, Sundt TM, Pellikka PA, Tajik AJ, Enriquez-Sarano M : Natural history of asymptomatic patients with normally functioning or minimally dysfunctional bicuspid aortic valve in the community. *Circulation* 117 : 2776-2784, 2008
15. Tzemos N, Therrien J, Yip J, Thanassoulis G, Tremblay S, Jamorski MT, Webb GD, Siu SC : Outcome in adults with bicuspid aortic valves. *JAMA* 300 : 1317-1325, 2008
 16. McKinsey DS, Ratts TE, Bisno AL : Underlying cardiac lesions in adults with infective endocarditis : the changing spectrum. *Am J Med* 82 : 681-688, 1987
 17. Varstela E, Verkkala K, Pohjola-Sintonen S, Valtonen V, Maamies T : Surgical treatment of infective aortic valve endocarditis. *Scand J Thorac Cardiovasc Surg* 25 : 167-174, 1991
 18. Kahveci G, Bayrak F, Pala S, Mutlu B : Impact of bicuspid aortic valve on complications and death in infective endocarditis of native aortic valves. *Tex Heart Inst J* 36 : 111-116, 2009
 19. Anguera I, Miro JM, Cabell CH, Abrutyn E, Fowler VG Jr, Hoen B, Olaison L, Pappas PA, de Lazzari E, Eykyn S, Habib G, Pare C, Wang A, Corey R : ICE-MD investigators. Clinical characteristics and outcome of aortic endocarditis with periannular abscess in the International Collaboration on Endocarditis Merged Database. *Am J Cardiol* 96 : 976-981, 2005
 20. Daniel WG, Mügge A, Martin RP, Lindert O, Hausmann D, Nonnast-Daniel B, Laas J, Lichtlen PR : Improvement in the diagnosis of abscesses associated with endocarditis by transesophageal echocardiography. *N Engl J Med* 324 : 795-800, 1991
 21. Choussat R, Thomas D, Isnard R, Michel PL, Iung B, Hanania G, Mathieu P, David M, du Roy de Chaumaray T, De Gevigney G, Le Breton H, Logeais Y, Pierre-Justin E, de Riberolles C, Morvan Y, Bischoff N : Perivalvular abscesses associated with endocarditis ; clinical features and prognostic factors of overall survival in a series of 233 cases. *Perivalvular Abscesses French Multicentre Study*. *Eur Heart J* 20 : 232-241, 1999
 22. Habib G, Hoen B, Tornos P, Thuny F, Prendergast B, Vilacosta I, Moreillon P, de Jesus Antunes M, Thilen U, Lekakis J, Lengyel M, Müller L, Naber CK, Nihoyannopoulos P, Moritz A, Zamorano JL : ESC Committee for Practice Guidelines. Guidelines on the prevention, diagnosis, and treatment of infective endocarditis (new version 2009) : the Task Force on the Prevention, Diagnosis, and Treatment of Infective Endocarditis of the European Society of Cardiology (ESC). Endorsed by the European Society of Clinical Microbiology and Infectious Diseases (ESCMID) and the International Society of Chemotherapy (ISC) for Infection and Cancer. *Eur Heart J* 30 : 2369-2413, 2009
 23. Aguado JM, González-Vílchez F, Martín-Durán R, Arjona R, Vázquez de Prada JA : Perivalvular abscesses associated with endocarditis. Clinical features and diagnostic accuracy of two-dimensional echocardiography. *Chest* 104 : 88-93, 1993
 24. Tsai TN, Tzeng BH, Hong GJ, Chu KM, Cheng SM, Yang SP : Perforated periaortic valve abscess presents as acute pericarditis and patient died in transesophageal echocardiographic study. *J Am Soc Echocardiogr* 17 : e1-3, 2006
 25. Feuchtner GM, Stolzmann P, Dichtl W, Schertler T, Bonatti J, Scheffel H, Mueller S, Plass A, Mueller L, Bartel T, Wolf F, Alkadhi H : Multislice Computed Tomography in Infective Endocarditis : Comparison With Transesophageal Echocardiography and Intraoperative Findings. *JACC* 53 : 436-444, 2009
 26. David TE, Gavra G, Feindel CM, Regesta T, Armstrong S, Maganti MD : Surgical treatment of active infective endocarditis : a continued challenge. *J Thorac Cardiovasc Surg* 133 : 144-9, 2007
 27. Miro JM, Anguera I, Cabell CH, Chen AY, Stafford JA, Corey GR, Olaison L, Eykyn S, Hoen B, Abrutyn E, Raoult D, Bayer A, Fowler VG Jr : International Collaboration on Endocarditis Merged Database Study Group. International Collaboration on Endocarditis Merged Database Study Group. *Staphylococcus Staphylococcus aureus native valve infective endocarditis : report on 566 episodes from the International Collaboration on Endocarditis Merged Database*. *Clin Infect Dis* 41 : 507-514, 2005
 28. Hill EE, Herijgers P, Herregods MC, Peetermans WE : Evolving trends in infective endocarditis. *Clin Microbiol Infect* 12 : 5-12, 2006