

## REVIEW

# Intensive insulin therapy during cardiovascular surgery

Shinji Kawahito, Hiroshi Kitahata<sup>#</sup>, Tetsuya Kitagawa<sup>§</sup>, Shuzo Oshita

*Department of Anesthesiology, <sup>#</sup>Department of Dental Anesthesiology, and <sup>§</sup>Department of Cardiovascular Surgery, Tokushima University Hospital, Tokushima, Japan*

**Abstract :** Recent evidence in the fields of surgery, emergency and critical care medicine indicates that strict glycemic control results in lower mortality. Hyperglycemia occurs frequently in patients with and without diabetes during cardiovascular surgery, especially during cardiopulmonary bypass. However, strict glucose control is difficult to achieve during cardiovascular procedures. To establish effective intensive insulin therapy during cardiovascular surgery, we conduct continuous blood glucose monitoring and employ automatic control by using an artificial endocrine pancreas (the STG<sup>®</sup>-22, Nikkiso, Tokyo, Japan). In this review, we will outline the present status and problems of conventional glycemic control for perioperative cardiovascular surgery and introduce the new perioperative blood glucose management method that we are testing now. We will also discuss the importance of perioperative glycemic control for cardiovascular surgery as well as future prospects. *J. Med. Invest.* 57 : 191-204, August, 2010

**Keywords :** *intensive insulin therapy, cardiovascular surgery, cardiopulmonary bypass, artificial endocrine pancreas, diabetes*

## INTRODUCTION

Hyperglycemia can worsen a number of perioperative problems, including cardiac, neurologic, and infectious complications (1). Hyperglycemia occurs frequently in patients with and without diabetes during cardiovascular surgery, especially during cardiopulmonary bypass. In a study by Van den Berghe and colleagues (2), intensive insulin therapy after surgery reduced morbidity and mortality in critically ill patients, most of whom underwent cardiac surgery. High-risk cardiac patients were found to derive the greatest benefit from intensive insulin therapy. However, strict glucose control is difficult to achieve during cardiovascular procedures requiring cardiopulmonary bypass because of the stress

of surgery, including anesthesia, cardioplegia, and inotropic support (3-5). Optimal glucose control is unlikely when glucose concentrations are measured only episodically.

In the first half of this review, we will present problems associated with glucose toxicity, role of insulin, and literature review of large randomized studies regarding intensive insulin therapy in the field of cardiovascular surgery. In the latter half, our clinical trial to evaluate the efficacy of the artificial endocrine pancreas during cardiovascular surgery will be presented and discussed.

## GLUCOSE TOXICITY AND THE ROLE OF INSULIN

### *Glucose Toxicity*

Glucose toxicity, in its narrow sense, refers to a clinical condition where control of diabetes is particularly poor, since hyperglycemia itself reduces the insulin secretion capacity of pancreatic  $\beta$ -cells,

Received for publication July 15, 2010 ; accepted July 30, 2010.

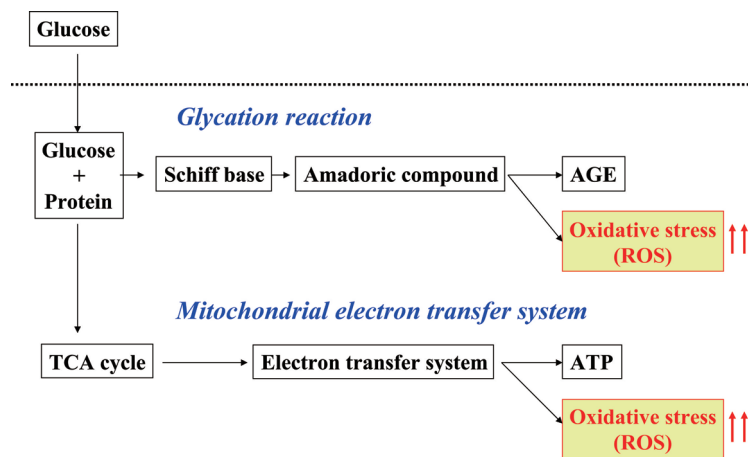
Address correspondence and reprint requests to Shinji Kawahito, MD, PhD, Department of Anesthesiology, Tokushima University Hospital, 3-18-15 Kuramoto-cho, Tokushima 770-8503, Japan and Fax : +81-88-633-7182.

and the induced insulin resistance leads to further hyperglycemia. This vicious circle finally leads to the total incapacity of  $\beta$ -cells to secrete insulin (6, 7). On the other hand, glucose toxicity in its wide sense refers to various complications due to diabetes. As for the cytotoxic mechanism due to hyperglycemia, the four contributing metabolic pathways are known as :

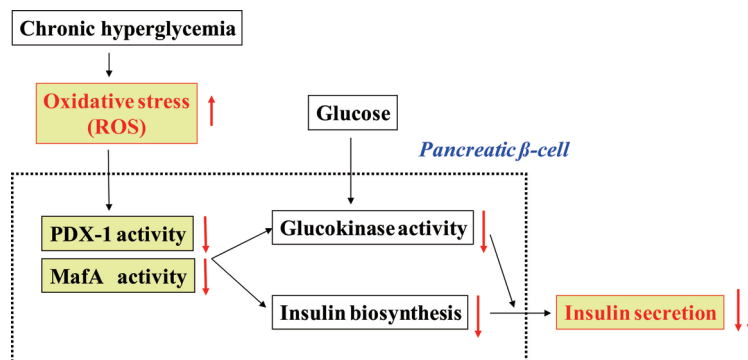
1. The polyol pathway
2. The hexosamine pathway
3. The advanced glycosylation end product (AGE)-producing pathway and
4. The diacyl glycerol (DAG)-producing pathway.

Recent fundamental research findings suggest that oxidative stress greatly influences the molecular mechanism of the reduction of insulin biosynthesis and secretion, which constitutes the main etiology of this glucose toxicity (1). Figure 1 shows the mechanism for the increase of oxidative stress in diabetes. There are two pathways known as the

glycation reaction and the mitochondrial electron transfer system. In the glycation reaction, a Schiff base is formed of glucose and protein followed by an Amadoric compound, after which AGE and reactive oxygen species (ROS) are produced as metabolites, leading to an increase in oxidative stress (8). In the mitochondrial electron transfer system, ATP and ROS are produced through the TCA cycle, which also leads to oxidative stress increase. Figure 2 illustrates the molecular mechanism of the reduction in insulin secretion caused by the increase in oxidative stress. When ROS increases due to chronic hyperglycemia, and oxidative stress increases, PDX-1 (pancreatic duodenal homeobox-1) activity decreases in pancreatic  $\beta$ -cells, and, as a result, glucokinase activity and insulin biosynthesis decrease, followed by a decrease in insulin secretion. MafA is a recently isolated  $\beta$ -cell specific transcription factor which functions as a potent activator of insulin gene transcription. It was shown recently that



**Figure 1.** Increase in oxidative stress in the diabetic state  
Acceleration of glycation response and the intramitochondrial electron transfer system was detected in the diabetic state, causing oxidative stress as the responses accelerate. AGE : advanced glycosylation end products ; ROS : reactive oxygen species ; TCA cycle : tricarboxylic acid cycle ; ATP : adenosine tri-phosphate



**Figure 2.** The mechanism of insulin secretion reduction due to glucose toxicity  
DNA binding activities of PDX-1 and MafA decrease as a result of oxidative stress caused by hyperglycemia, while insulin biosynthesis and secretion also decrease. ROS : reactive oxygen species ; PDX-1 : pancreatic duodenal homeobox-1

expression and/or DNA binding activities of MafA, together with PDX-1, are reduced after chronic exposure to a high glucose concentration (9).

*Diabetic complications*

These mechanisms cause complications in diabetes, which are divided into chronic and acute complications based on the disease course (Table 1). Chronic complications are further divided into microvascular diseases, which are specific, to and common in diabetes, and macrovascular diseases, which are not specific but frequent and thus important for prognosis. Chronic hyperglycemia can induce microvascular complications such as retinopathy, neuropathy or nephropathy (10). It can also induce macrovascular complications partially, such as aortic sclerosis, stroke, myocardial infarction, angina pectoris, and obstructive peripheral vascular disease. Acute complications include diabetic coma and acute infection. Especially, acute infection is the biggest problem in surgery patients.

The two major problems associated with acute hyperglycemia are infection and cardiovascular disorders. The causes of infection are :

1. Diminished leukocyte chemotaxis,
2. Diminished granular phagocytic activity, and
3. Diminished intracellular bactericidal capacity (11, 12).

Cardiovascular disorders, on the other hand, are caused by :

1. Impaired myocardial protection by hyperglycemia due to changes in cardiomyocyte cell communication
2. Diminished control function of coronary circulation in the ischemic region
3. Impaired myocardial protection resulting from ischemic preconditioning and anesthetic preconditioning. Inhibition of mitochondrial  $K_{ATP}$  channel activation is thought to be another cause of this impairment (13-15).

*Effects of insulin*

In addition to reducing blood glucose levels, the insulin used in intensive insulin therapy has itself a vulnerary effect and provides myocardial protection. The basic vulnerary effects of insulin are anti-inflammatory and antioxidant (16). In fact, it is claimed that intensive use of insulin for an injury can reduce mortality due to multiple organ failure associated with sepsis. Insulin is thought to exert its constant growth promotion and wound healing effects because it is closely related to growth factors with vulnerary effects such as the insulin-like growth factor (IGF) (17). Also, insulin maintains the constant state of vascular endothelial cells through nitric oxide (NO) synthase activation, while it also diminishes oxidative stress and cytokine production. On the other hand, glucose insulin (GI) and glucose insulin potassium (GIK) therapies are representative of the myocardial protective effect of insulin (18).

LITERATURE REVIEW OF INTENSIVE INSULIN THERAPY

*Effects of glucose management in ICU*

Intensive insulin therapy is used for critically ill patients, and its specific aims are multiple organ protection and the prevention and treatment of infection (2, 19-24). Intensive insulin administration normalizes blood glucose levels and maintains normal levels. Originally, the target for this method was a blood glucose level of 80-110 mg/dl (2), but later many modified versions were introduced that aimed for a blood glucose level upper limit of around 140 to 180 mg/dl (22-24). The greatest reduction in mortality resulting from this therapy involves death due to multiple-organ failure with a proven septic focus.

The first paper deals with the effects of glucose

Table 1 : Types of diabetic complications

<p>Chronic complications</p> <ul style="list-style-type: none"> <li>· Microvascular diseases : retinopathy, neuropathy, nephropathy</li> <li>· Macrovascular diseases : aortic sclerosis, stroke, myocardial infarction, angina pectoris, obstructive peripheral vascular disease, etc.</li> <li>· Others : cataract, dermatopathy, hypertension, osteopenia, osteomalacia, arthropathy, soft tissue fibromatosis, etc.</li> </ul>
<p>Acute complications</p> <ul style="list-style-type: none"> <li>· Diabetic coma : ketoacidotic coma, non-ketotic hyperosmolar coma, lactic acidosis</li> <li>· Acute infection : bacterial, mycotic, viral, etc.</li> </ul>

management in the intensive care unit (ICU). Van den Berghe and co-workers (2) in Belgium published the paper "Intensive Insulin Therapy in Critically Ill Patients" in the *New England Journal of Medicine* in 2001. Patients were randomly assigned to receive intensive insulin therapy (maintenance of blood glucose at a level between 80 and 110 mg/dl) or conventional treatment (infusion of insulin only if the blood glucose level exceeded 215 mg/dl and maintenance of glucose at a level between 180 and 200 mg/dl). With a total of 1,548 patients enrolled, intensive insulin therapy reduced mortality during intensive care from 8.0% with conventional treatment to 4.6%. The benefit of intensive insulin therapy was attributable to its effect on mortality among patients who remained in ICU for more than five days (20.2% with conventional treatment, as compared with 10.6% with intensive insulin therapy). Figure 3 represents Kaplan-Meier curves showing cumulative survival of patients who received intensive insulin treatment or conventional treatment in ICU. Figure 3A shows the survival rate in ICU, and Figure 3B the in-hospital survival rate. Later, the same authors published many study reports which had a major impact, so that intensive insulin therapy rapidly found acceptance worldwide (19-21).

#### *Surviving Sepsis Campaign guidelines*

In association with the Surviving Sepsis Campaign guidelines for management of severe sepsis and

septic shock were published in *Critical Care Medicine* in 2004 (25). With these guidelines, the survival rate improved with a blood glucose level of 80-110 mg/dl, but a target blood glucose level of 150 mg/dl was recommended because of the risk of hypoglycemia. It was shown that blood glucose value management is more important than managing the total amount of insulin, while frequent blood glucose measurements are essential. A revised edition of the guidelines was published in 2008 (26), but the recommended target blood glucose value remained 150 mg/dl or less.

#### *Prospective randomized controlled studies of glyce-mic control*

Several large-scale multicenter studies of glyce-mic control have been performed, and three of the most well-known are the VISEP Trial (27), the Glucontrol Study (28), and the NICE-SUGAR study (29). The VISEP Trial was started as a 2-year study of insulin therapy or other effects of severe sepsis involving 17 German institutions. The study started with 600 patients in 2003, but was discontinued in 2005 when the number had dropped to 537. The reason for the dropout was frequent hypoglycemia.

The Glucontrol Multi-Center Study was a large study, which started with 3,500 patients in 21 European institutions in 2004. The aim of this study was to compare results for two groups with target blood glucose values of 80-110 and 140-180, but this was

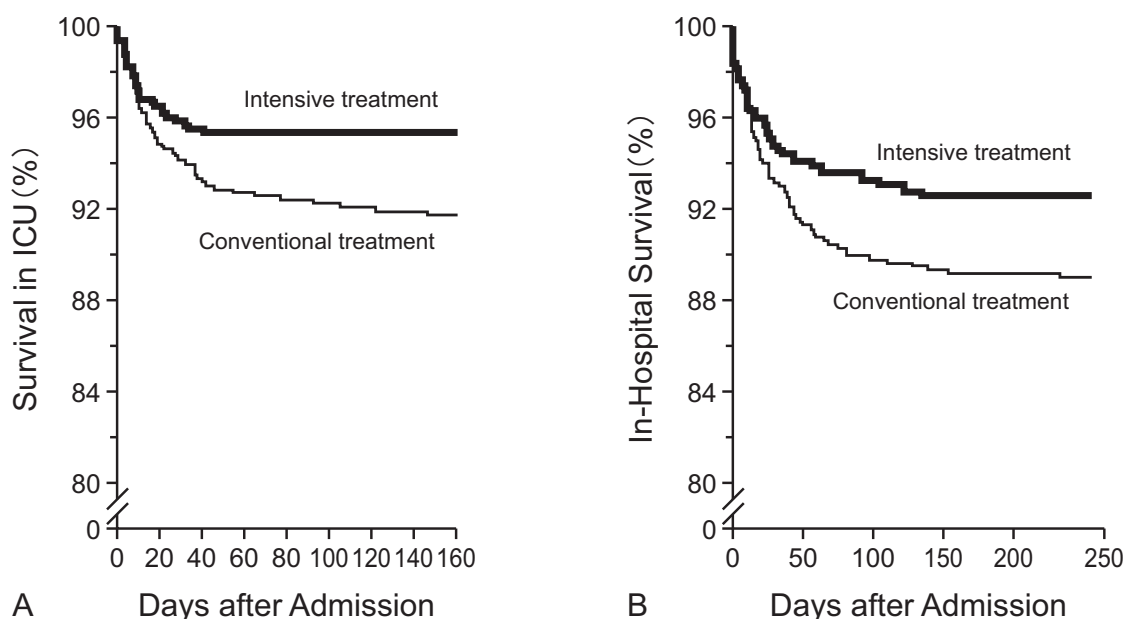


Figure 3. Kaplan-Meier curves showing cumulative survival of patients who received intensive insulin treatment or conventional treatment in the intensive care unit.

(from Ref. 2 Van den Verghe G, et al. *N Eng J Med* 345, 1359-1367, 2001)

also discontinued suddenly with only 1,101 cases remaining. For this study, too, the reason for cancellation was a very high incidence of hypoglycemia.

The results of the subsequent NICE-SUGAR study, which compared target blood glucose values of 81-108 and 144-180 in two groups and was performed in Oceania and North America attracted the most interest. Results were presented recently, but were contrary to expectations. We will discuss the details later. In a large study, we found that "tight glycemic control with the aid of a manual easily leads to hypoglycemia".

#### *Recent reports on intensive insulin therapy*

Some recent negative reports about intensive insulin therapy have led to a reconsideration of intensive insulin therapy (29-31). One study which used a meta-analysis to examine mortality among critically ill patients was published in JAMA of August, 2008 (30). No differences in in-hospital mortality rates were observed between the conventional and intensive therapy groups. Few patients in the intensive therapy group suffered from sepsis, but hypoglycemic incidence was very high (13.7% vs. 2.5%), thus warranting further attention.

The results of the previously mentioned NICE-SUGAR study were presented in the March issue of the New England Journal of Medicine (29). Contrary to everyone's expectations, the mortality for the intensive therapy group after 90 days (target blood sugar value : 81-108 mg/dl) was higher (27.5% vs 24.9%) than that for the conventional therapy group (target blood sugar value : 144-180 mg/dl). Do these findings mean that intensive insulin therapy should be discarded entirely? Although this is probably not the case, it is clear that there is an urgent need for the establishment of a new blood glucose control method that does not cause hypoglycemia.

#### *Intensive insulin therapy during cardiovascular surgery*

Next, we will briefly introduce the main publications on intensive insulin therapy during cardiovascular surgery. In the field of cardiovascular surgery, the importance of controlling postoperative blood glucose values at 200 mg/dl or less has been recognized since the late 1990s (32, 33). After that, many reports regarding usefulness of intensive insulin therapy during cardiovascular surgery were published (34-37). In a study by Van den Berghe and colleagues, intensive insulin therapy after surgery

reduced morbidity and death in critically ill patients, most of whom had undergone cardiac surgery.

Furnary et al. (32) reported in 1999 that sternal infection decreased by 58% when they controlled postoperative blood glucose values at 150-200 mg/dl in coronary artery bypass patients. Similarly, when they closely controlled blood glucose values in coronary artery bypass patients from the intraoperative stage (before median sternotomy) for three days postoperatively, not only sternal infection but also mortality reportedly decreased by 57%. They therefore emphasized the significance of glycemic control during and after surgery (34).

As for glycemic control during cardiopulmonary bypass, one study analyzed 1,579 adult patients with diabetes who underwent cardiovascular surgery in 2005 (38). For patients whose blood glucose level during cardiopulmonary bypass was more than 360 mg/dl, the mortality increased from 1.7% to 6%. That is why hyperglycemia of more than 300 mg/dl should be avoided, even temporarily, if the patients have diabetes. Cases with blood glucose levels exceeding 300 mg/dl may be considered rare occurrences, but as I will show later, there were a great many cases with blood glucose levels of more than 300 mg/dl during cardiopulmonary bypass when we used continuous monitoring.

These background findings resulted in a review that was published in 2006, which could be considered guidelines for cardiopulmonary bypass (39). This review covers eight risk factors of adult cardiopulmonary bypass as evidence for the guidelines. In addition to neuropathy, hemodilution, and inflammatory reaction, glycemic control is mentioned as very important evidence. The review emphasizes the importance of maintaining blood glucose levels within the normal range for all patients, including those with no diagnosis of diabetes and those undergoing cardiopulmonary bypass, during the entire perioperative period classified as Class I, Level B.

## CURRENT INTRAOPERATIVE BLOOD GLUCOSE MANAGEMENT

### *Intraoperative glycemic control at Tokushima University Hospital*

For a clear understanding of the present conditions of perioperative glycemic control at our hospital, here is a brief retrospective presentation of intraoperative glycemic control policies for major surgery and changes in real blood glucose values

during 2007. This review covers 74 hepatectomies, 12 pancreatico duodenectomies, 24 esophagectomies and 35 cardiovascular surgeries with cardiopulmonary bypass. Table 2 shows intraoperative blood glucose levels and insulin consumption divided into groups according to presence or absence of diabetes and the operative method. The conventional glycemic control policy resulted in target blood glucose values maintained at around 150-200 but frequently cases were not managed within the target range. Especially during cardiovascular surgery, hyperglycemic states with blood glucose values of 400 mg/dl or more often occurred during extracorporeal circulation, even in cases without diabetes, and blood glucose control was often difficult.

The next year, from January 2008, we tried intensive insulin therapy for stricter glycemic control by using manual insulin injection according to a sliding scale. Table 3 shows intraoperative glycemic control from January to the end of May 2008. Glucose and insulin were administered positively and

the targeted intraoperative blood glucose value was between 100 and 150 mg/dl. Use of insulin was higher than in 2007, and slightly lower blood glucose values were maintained, but remained unsatisfactory. Intraoperative glycemic control was also difficult especially for cardiovascular surgery.

#### *The challenge*

The challenge we faced was how to achieve strict intraoperative glycemic control without hypoglycemic risk when blood glucose values vary widely. We had to choose between two methods. One was a stricter protocol of glycemic control. For this, we shortened the time between blood sugar measurements and made the insulin dose more precise. However, this increased the work load of the anesthesiologist. The other method was to entrust the work to a computer and a machine, which allows for continuous blood glucose monitoring and an automatic control system. We firmly opted for the second method.

**Table 2 :** Intraoperative glycemic control situation of Tokushima University Hospital from January to December in 2007 (Retrospective study)

Target BS : 150-200 mg/dl

		BS (mg/dl)	Insulin (U) [Median (Max-Min)] [Mean ± SD]
Hepatectomies (n=74)	DM (-) n=57	175 (72-309)	1.5 ± 3.6
	DM (+) n=17	218 (84-449)	9.3 ± 12.5
Pancreatico duodenectomies (n=12)	DM (-) n=7	162 (105-270)	4.7 ± 10.0
	DM (+) n=5	172 (79-261)	3.9 ± 4.4
Esophagectomies (n=24)	DM (-) n=22	120 (90-165)	0
	DM (+) n=2	163 (107-210)	0
Cardiovascular surgeries with cardiopulmonary bypass (n=35)	DM (-) n=29	179 (74-454)	1.4 ± 3.6
	DM (+) n=6	204 (95-361)	4.8 ± 6.9

BS : Blood sugar, DM : Diabetes mellitus

**Table 3 :** Intraoperative glycemic control situation of Tokushima University Hospital from January to May in 2008 (Prospective study)

Target BS : 100-150 mg/dl

	BS (mg/dl)	Insulin (U) [Median (Max-Min)] [Mean ± SD]
Hepatectomies (n=18, DM 2 cases)	174 (85-317)	2.2 ± 4.5
Pancreatico duodenectomies (n=6, DM 1 case)	162 (92-251)	1.7 ± 4.1
Esophagectomies (n=8, DM 0 case)	114 (88-160)	0
Cardiovascular surgeries with cardiopulmonary bypass (n=11, DM 3 cases)	169 (72-341)	7.2 ± 7.1

BS : Blood sugar, DM : Diabetes mellitus

CONTINUOUS BLOOD GLUCOSE MONITORING AND CONTROL SYSTEM

Artificial endocrine pancreas

In December 2007, our clinical team at Tokushima University initiated a clinical trial to evaluate the efficacy of the artificial pancreas for intra-operative patients. Two Nikkiso STG<sup>®</sup>-22 artificial pancreas systems (Figure 4) were put into clinical use at Tokushima University for intra- and post-operative glucose control. In order to familiarize ourselves with the device we first used the STG<sup>®</sup>-22 only for glucose monitoring purposes combined with insulin administration according to a sliding scale, and not for glucose control. Once the standard operational procedure was established, we used the STG<sup>®</sup>-22 for closed-loop intensive glucose control.

The STG<sup>®</sup>-22 from Nikkiso in Tokyo is an original artificial endocrine pancreas with a closed-loop glyceemic control system that provides continuous blood glucose monitoring through a glucose sensor electrode and automatically administers subsequent insulin and glucose infusions to maintain appropriate blood glucose levels (40, 41).

The applications for this device are :

1. Emergency treatment during hyperglycemia (that

is, diabetic coma)

2. Diagnosis of insulin resistance and the secretional capacity of patients with diabetes

3. Glycemic control during surgery, trauma and delivery (including patients without diabetes).

This device is designed to simulate the pancreatic function by means of mechanical engineering (Figure 4). The glucose infusion pump is equivalent to the glucagon secretion mechanism in the  $\alpha$ -cells of the pancreas, the glucose reservoir to the  $\alpha$ -granules, the glucosensor to the cell membrane, the battery to the mitochondria, the computer to the nucleus, the insulin reservoir to the  $\beta$ -granules of the  $\beta$ -cells of the pancreas, an the insulin infusion pump to the insulin secretion mechanism.

The artificial pancreas STG<sup>®</sup>-22 is composed of a glucose sensor, which performs glucose detection and monitoring, and pumps for infusing the appropriate amount of insulin or glucose. The insulin and glucose pumps are computer-regulated based on a targeted blood glucose value determined before operation of the system is started. It is important to recognize that the STG<sup>®</sup>-22's glucose sensor, which withdraws the blood from the patient at a rate of 2 ml per hour, is capable of continuously measuring the blood glucose level with its glucose sensor, and

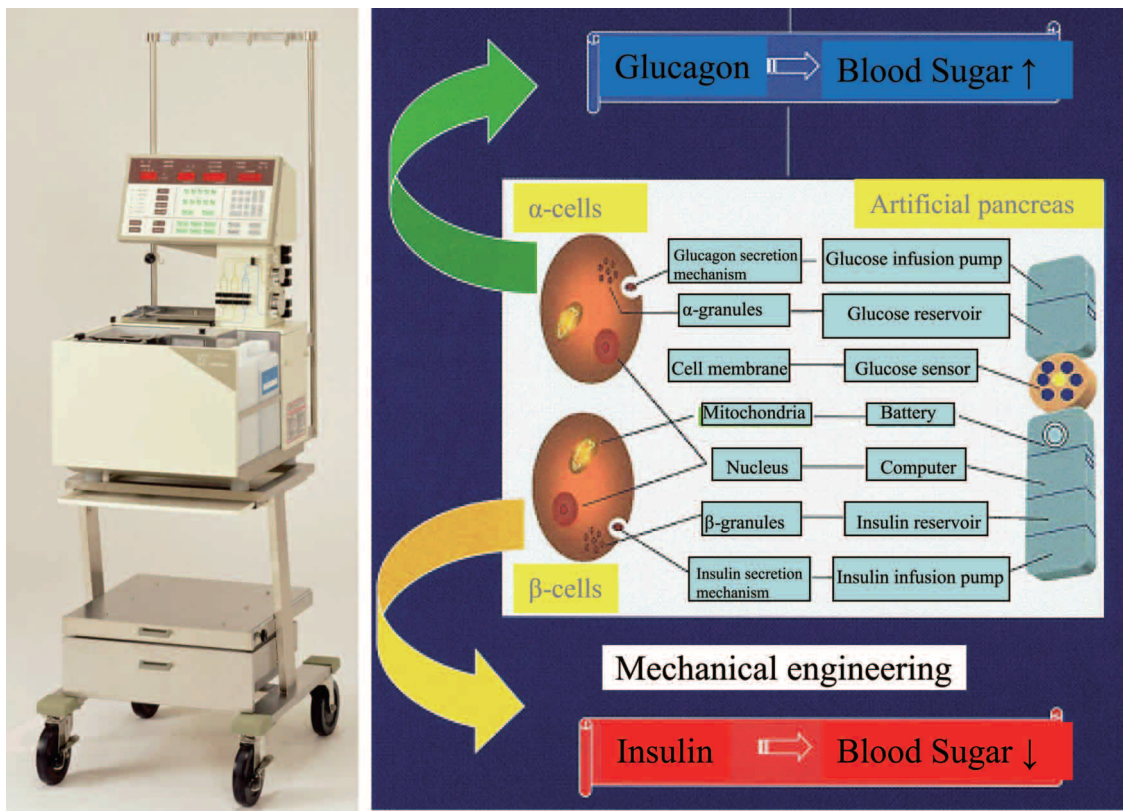


Figure 4. Concept of artificial endocrine pancreas

automatically infuses insulin or glucose to adjust the blood glucose level of the patients in accordance with the target glucose value, which is an adaptation of what we call the “closed loop system”. This device provides continuous blood glucose monitoring by means of dual lumen catheter blood sampling, a high-quality roller pump and a glucose sensor electrodes with glucose oxidase membrane. The measured blood glucose level is then inputted into a computer, and the infusion rate of insulin or glucose is determined with an algorithm.

*Accuracy of a continuous blood glucose monitoring*

Yamashita et al. have published several papers regarding the reliability and accuracy of the STG<sup>®</sup>-22 for continuous blood glucose monitoring (42, 43). Figure 5A shows data obtained during surgery, and Figure 5B shows the data after surgery. Blood glucose measured continuously with the STG<sup>®</sup>-22 correlated strongly with measurements obtained intermittently with a conventional laboratory glucometer.

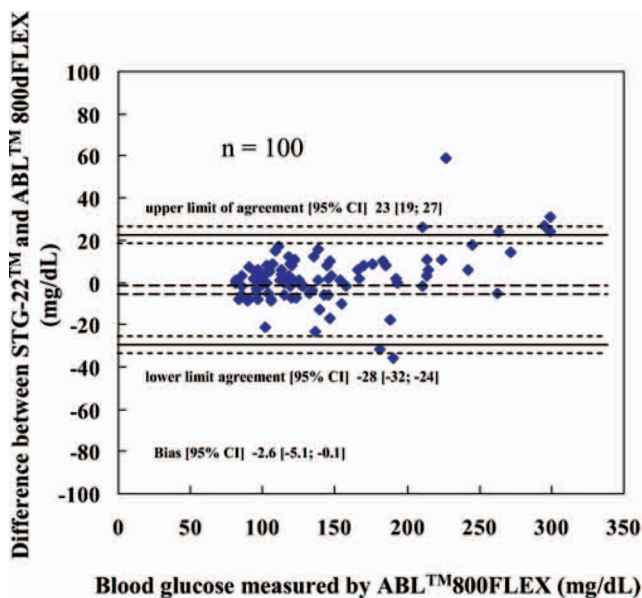
Two types of continuous glucose monitoring systems are currently in use : a continuous subcutaneous glucose monitor and a continuous blood glucose monitor. The continuous subcutaneous glucose monitoring system might be less invasive than a

continuous blood glucose monitoring system. However, the precision of both these types of continuous glucose monitors is controversial. It has been reported that a continuous subcutaneous glucose monitor had a larger error (44). STG<sup>®</sup>-22 is currently the only continuous blood glucose monitoring device in the world, it might be a useful option for intensive insulin therapy.

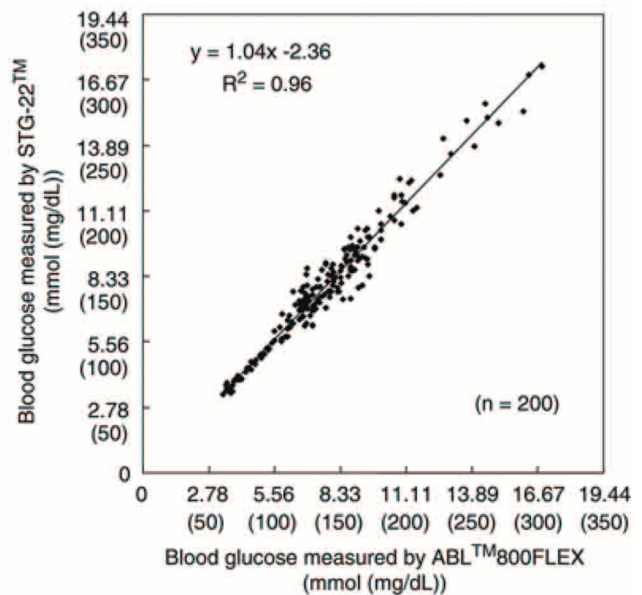
**INTENSIVE INSULIN THERAPY DURING CARDIOVASCULAR SURGERY**

*Continuous blood glucose monitoring during off-pump coronary artery bypass grafts*

To establish an intensive insulin therapy during cardiovascular surgery, we first employed continuous monitoring of blood glucose values while using off-pump coronary artery bypass grafts (OPCAB) and during cardiovascular surgery with a cardiopulmonary bypass, and looked for any changes in intraoperative blood glucose values. Figure 6 shows continuous blood glucose monitoring during OPCAB. Effective continuous blood glucose monitoring was possible, but in all cases few changes in intraoperative blood glucose levels were observed during OPCAB surgery.



**A**



**B**

Figure 5. Accuracy of a continuous blood glucose monitoring (A : from Ref. 42 Yamashita K, et al. Anesth Analg 106 : 160-163, 2008, B : from Ref. 43 Yamashita K, et al. Acta Anaesthesiol Scand 53 : 66-71, 2009)



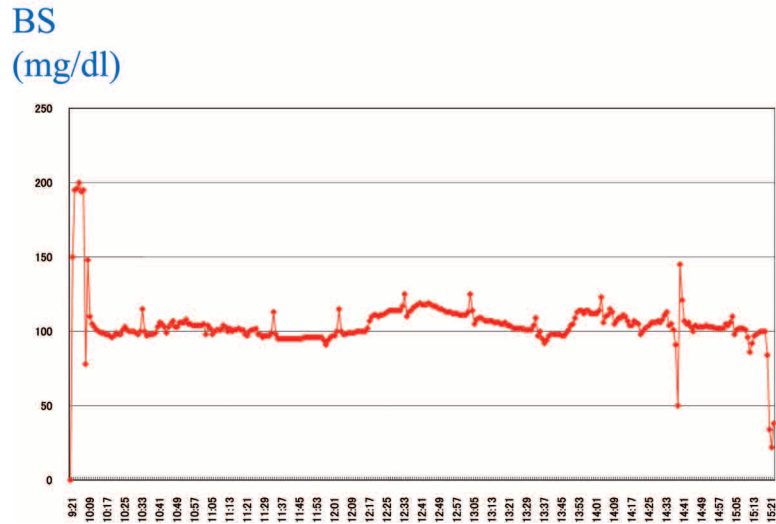


Figure 6. Continuous blood glucose monitoring during off-pump coronary artery bypass grafts  
BS ; blood sugar

*Continuous blood glucose monitoring during cardiovascular surgery with cardiopulmonary bypass*

Next, we tried continuous blood glucose monitoring during cardiovascular surgery with cardiopulmonary bypass. However, we encountered a major problem here because not enough blood was obtained for monitoring. This necessitated intraoperative suspension of continuous blood glucose monitoring in three of the first five cases. Blood sampling via the venous side of the cardiopulmonary bypass circuit was tried in the subsequent cases, which enabled us to obtain sufficient quantities of blood.

Figure 7 is one typical case of continuous blood glucose monitoring during cardiovascular surgery

with cardiopulmonary bypass. We found that significant hyperglycemia occurred during cardiopulmonary bypass after initiation of cardiopulmonary bypass using an aortic clamp, the blood glucose level increased markedly to around 300 mg/dl. After the aortic de-clamp and termination of the extracorporeal circulation, blood glucose showed a tendency to decrease, but hyperglycemia of around 200 mg/dl persisted in many cases.

*Why does hyperglycemia occur during cardiovascular surgery (especially during cardiopulmonary bypass) ?*

One of the main reasons for the occurrence of hyperglycemia during cardiovascular surgery (especially during cardiopulmonary bypass) is suppression

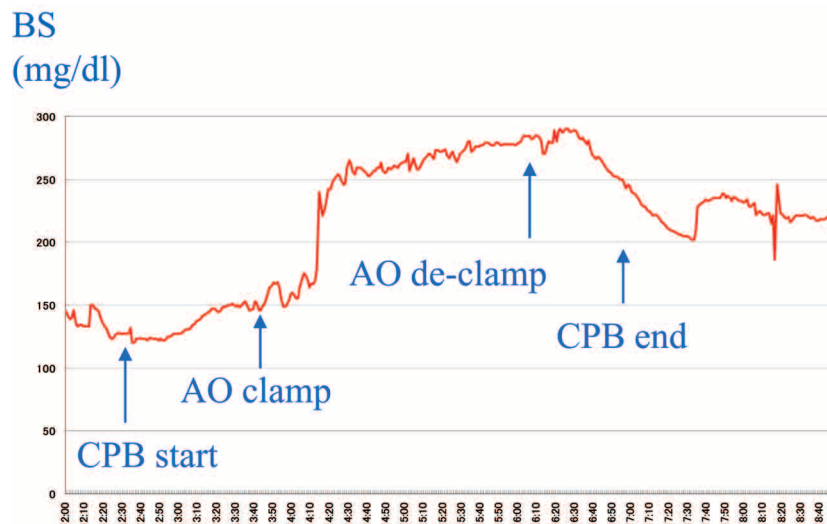


Figure 7. Continuous blood glucose monitoring during cardiovascular surgery with cardiopulmonary bypass  
BS ; blood sugar : CPB ; cardiopulmonary bypass : AO ; Aorta

of insulin secretion. This is caused by a reduction in the pancreatic blood flow, the inhibition of  $\beta$ -cell activity of the pancreas due to hypothermia, and the increased secretion of insulin counter-regulatory hormones. Other reasons are intracellular disorder of glucose use due to peripheral circulatory failure and inhibition of the glycolytic pathway enzyme due to hypothermia.

We do not use it in this hospital, the effect of cardioplegia and priming solution including glucose may be thought.

The causes of insufficiency of blood drawn during cardiopulmonary bypass are due to hypothermia, peripheral circulatory failure (low perfusion), vasoconstriction and posture (especially with arms elevated or bent). This problem was solved by sampling blood via the venous side of the cardiopulmonary circuit, thus rendering continuous blood glucose monitoring stable and reliable even during cardiovascular surgery with cardiopulmonary bypass.

#### *Intensive insulin therapy during cardiovascular surgery using the artificial endocrine pancreas*

Figure 8 shows one case of intensive insulin therapy during cardiovascular surgery using the artificial endocrine pancreas. The blood glucose level suddenly started to increase after the initiation of cardiopulmonary bypass, but only to a maximum of 150 mg/dl, and the level was controlled by appropriate insulin administration. After termination of the cardiopulmonary bypass, the blood glucose level began to decrease, but hypoglycemia was avoided by means of appropriate glucose administration.

## PROBLEMS AND PROSPECTS

### *Problems*

Some of the questions associated with intensive insulin therapy are :

What is the optimal glycemic control target?

Which patients are indicated?

In this connection, glycemic control policy may be determined depending on patients, clinical conditions, and particular operative procedures. Other questions are :

Is the mean blood glucose value important? Is it important to reduce variability of blood glucose concentration (45, 46)? An artificial pancreas system, such as the bedside-type STG<sup>®</sup>-22, can help achieve stable glucose control (47-50), but it is large and expensive, difficult to operate, and can be used for only a short period of time.

### *Merits and demerits of the representative perioperative blood glucose management procedures*

The merits of the conventional sliding scale method are few hypoglycemic attacks, a small work load because of few blood glucose measurements, and low cost. On the other hand, a disadvantage is that close glycemic control is difficult. An advantage of open-loop intensive insulin therapy is that it allows for close glycemic control, but drawbacks are the possibility of hypoglycemic attack, a heavier work load due to frequent blood glucose measurements, and an increase in incident development.

The merits of closed-loop intensive insulin therapy using the artificial endocrine pancreas are that

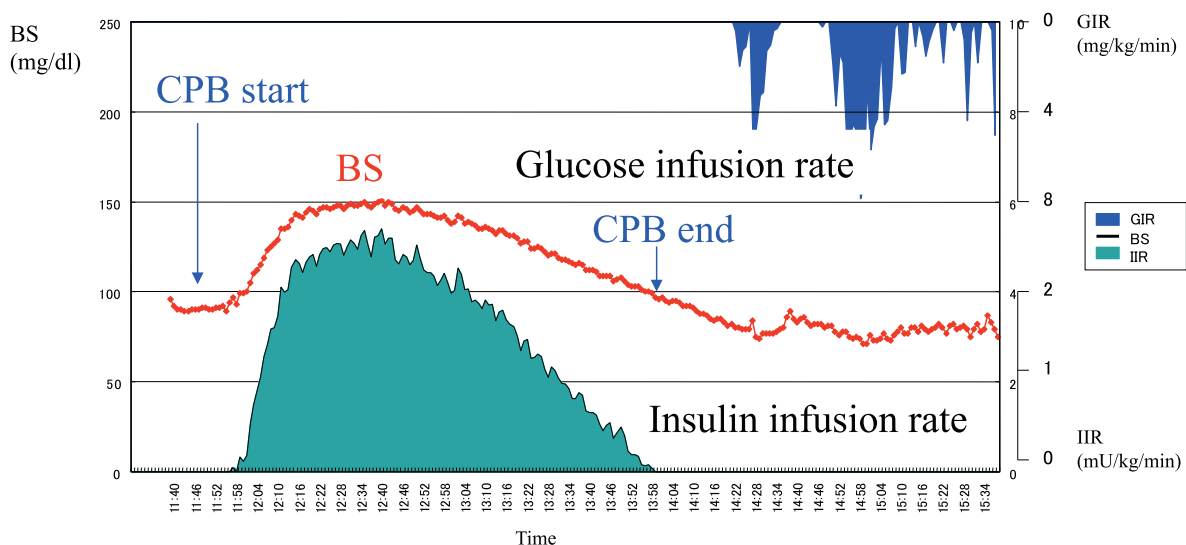


Figure 8. Intensive insulin therapy during cardiovascular surgery using the artificial endocrine pancreas BS ; blood sugar : CPB ; cardiopulmonary bypass : GIR ; glucose infusion rate : IIR ; insulin infusion rate

strict glycemic control is possible, an absence of hypoglycemic attacks, a reduced work load in spite of frequent blood glucose measurements, and a reduction in incidents. On the other hand, the demerits are high cost, problems associated with an insufficient quantity of blood obtained for monitoring, the need for much preparation time, and difficulty of operation.

#### *Next-generation artificial endocrine pancreas*

It is hoped that development of the next-generation artificial pancreas will overcome the demerits of the current models. The development concept targets treatment where the device can be used in an operating room or the ICU during an acute phase. Surgical and emergency applications demand quick and easy system initiation. Moreover, compact design is essential for operating room and intensive care unit settings which are already crowded with equipment. The device should also be inexpensive so that this technology can be used for many patients.

Ideally, the next generation artificial pancreas should be equipped with a disposable and modular tubing circuit with an auto-priming function, automatic calibration with quick response in sensor setup, and a compact structure. These improvements are now being developed (Figure 9). It is expected that such an improved model will be authorized soon, and we also hope to be able to use it soon.



Figure 9. Next-generation artificial endocrine pancreas

#### *Prospects*

It seems that distinct operative methods for example, glycemic control made to order for individual patients, will become important in the future. Also, establishment of a simpler and easier to use perioperative blood glucose control method is urgently needed. We want to make every effort to use strict intraoperative glycemic control which can lead to improvement in long-term prognosis for cardiovascular surgery patients. In addition, large-scale multi-center studies in the field of internal medicine such as ACCORD and ADVANCE were reported (51, 52). Lowering of HbA1c from less than 6.5 with the traditional approach to less than 5.8 is feasible, but development of hypoglycemia is a problem, making support of at-home management important. By changing these preoperative care policies, perioperative glycemic control may benefit in the future (53).

As for the artificial pancreas, it seems that we can look forward to a small and light simple low-cost model with a continuous subcutaneous glucose sensor using near-infrared light (54). Eventually, we may see the development of a portable closed-loop artificial pancreas for at-home management support.

## CONCLUSIONS

In conclusion, strict perioperative glycemic control is effective for the protection of many organs and a reduced incidence of infection so that it is believed that it can lead to improved prognosis for surgery. It is thought that the main benefit of intensive insulin therapy can be realized in cardiovascular surgery (especially during cardiopulmonary bypass). However, strict perioperative glycemic control is difficult due to the need for intermittent blood glucose measurements and the manual administration of insulin. Intensive insulin therapy during cardiovascular surgery may thus be provided by the use of the artificial pancreas.

## REFERENCES

1. Kawahito S, Kitahata H, Oshita S : Problems associated with glucose toxicity : role of hyperglycemia-induced oxidative stress. *World J Gastroenterol* 15 : 4137-4142, 2009

2. Van den Berghe G, Wouters P, Weekers F, Verwaest C, Bruyninckx F, Schetz M, Vlasselaers D, Ferdinande P, Lauwers P, Bouillon R: Intensive insulin therapy in the critically ill patients. *N Eng J Med* 345 : 1359-1367, 2001
3. Hall RI, Smith MS, Rucker G : The systemic inflammatory response to cardiopulmonary bypass : pathophysiological, therapeutic, and pharmacological considerations. *Anesth Analg* 85 : 766-782, 1997
4. Chaney MA, Nikolov MP, Blakeman BP, Bakhos M : Attempting to maintain normoglycemia during cardiopulmonary bypass with insulin may initiate postoperative hypoglycemia. *Anesth Analg* 89 : 1091-1095, 1999
5. Gandhi GY, Nuttall GA, Abel MD, Mullany CJ, Schaff HV, O'Brien PC, Johnson MG, Williams AR, Cutshall SM, Mundy LM, Rizza RA, McMahon MM : Intensive intraoperative insulin therapy versus conventional glucose management during cardiac surgery. *Ann Intern Med* 146 : 233-243, 2007
6. LeRoith D : Beta-cell dysfunction and insulin resistance in type 2 diabetes : role of metabolic and genetic abnormalities. *Am J Med* 113 (Suppl 6A) : 3S-11S, 2002
7. Dubois M, Vacher P, Roger B, Huyghe D, Vandewalle B, Kerr-Conte J, Pattou F, Moustaid-Moussa N, Lang J : Glucotoxicity inhibits late steps of insulin exocytosis. *Endocrinology* 148 : 1605-1614, 2007
8. Kaneto H, Fujii J, Myint T, Miyazawa N, Islam KN, Kawasaki Y, Suzuki K, Nakamura M, Tatsumi H, Yamasaki Y, Taniguchi N : Reducing sugars trigger oxidative modification and apoptosis in pancreatic beta-cells by provoking oxidative stress through the glycation reaction. *Biochem J* 320 : 855-863, 1996
9. Kaneto H, Miyatsuka T, Kawamori D, Yamamoto K, Kato K, Shiraiwa T, Katakami N, Yamasaki Y, Matsuhisa M, Matsuoka TA : PDX-1 and MafA play a crucial role in pancreatic beta-cell differentiation and maintenance of mature beta-cell function. *Endocr J* 55 : 235-252, 2007
10. Yamagishi S, Imaizumi T : Diabetic vascular complications : pathophysiology, biochemical basis and potential therapeutic strategy. *Curr Pharm Des* 11 : 2279-2299, 2005
11. Nielson CP, Hindson DA : Inhibition of polymorphonuclear leukocyte respiratory burst by elevated glucose concentrations in vitro. *Diabetes* 38 : 1031-1035, 1989
12. McManus LM, Bloodworth RC, Prihoda TJ, Blodgett JL, Pinckard RN : Agonist-dependent failure of neutrophil function in diabetes correlates with extent of hyperglycemia. *J Leukoc Biol* 70 : 395-404, 2001
13. Kehl F, Krolikowski JG, Mraovic B, Pagel PS, Wartier DC, Kersten JR : Hyperglycemia prevents isoflurane-induced preconditioning against myocardial infarction *Anesthesiology* 96 : 183-188, 2002
14. Kawano T, Tanaka K, Mawatari K, Oshita S, Takahashi A, Nakaya Y : Hyperglycemia impairs isoflurane-induced adenosine triphosphate-sensitive potassium channel activation in vascular smooth muscle cells. *Anesth Analg* 106 : 858-864, 2008
15. Hagiwara S, Iwasaka H, Hasegawa A, Asai N, Noguchi T : Hyperglycemia contributes to cardiac dysfunction in a lipopolysaccharide-induced systemic inflammation model. *Crit Care Med* 37 : 2223-2227, 2009
16. Dandona P, Aljada A, Mohanty P, Ghanim H, Hamouda W, Assian E, Ahmad S : Insulin inhibits intranuclear nuclear factor kappaB and stimulates IkappaB in mononuclear cells in obese subjects : evidence for an anti-inflammatory effects? *J Clin Endocrinol Metab* 86 : 3257-3265, 2001
17. Dunger DB : Insulin and insulin-like growth factors in diabetes mellitus. *Arch Dis Child* 72 : 469-471, 1995
18. Ramanathan T, Shiota K, Morita S, Nishimura T, Huang Y, Hunyor SN : Glucose-insulin-potassium solution improved left ventricular mechanics in diabetes. *Ann Thoracic Surg* 73 : 582-587, 2002
19. Van den Berghe G, Wouters PJ, Bouillon R, Weekers F, Verwaest C, Schetz M, Vlasselaers D, Ferdinande P, Lauwers P : Outcome benefit of intensive insulin therapy in the critically ill : insulin dose versus glycemic control. *Crit Care Med* 31 : 359-366, 2003
20. Van den Berghe G, Wilmer A, Hermans G, Meersseman W, Wouters PJ, Milants I, Van Wijngaerden E, Bobbaers H, Bouillon R : Intensive insulin therapy in the medical ICU. *N Eng J Med* 354 : 449-461, 2006
21. Van den Berghe G, Wilmer A, Milants I, Wouters PJ, Bouckaert B, Bruyninckx F, Bouillon R, Schetz M : Intensive insulin therapy

- in mixed medical/surgical intensive care units : benefit versus harm. *Diabetes* 55 : 3153-3159, 2006
22. Finney SJ, Zekveld C, Elia A, Evans TW : Glucose control and mortality in critically ill patients. *JAMA* 290 : 2041-2047, 2003
  23. Krinslery JS : Effect of an glucose management protocol on the mortality of critically ill adult patients. *Mayo Clin Proc* 79 : 992-1000, 2004
  24. Lipshultz AKM, Gropper MA : Perioperative glycemic control : an evidence-based review. *Anesthesiology* 110 : 408-421, 2009
  25. Dellinger RP, Carlet JM, Masur H, Gerlach H, Calandra T, Cohen J, Gea-Banacloche J, Keh D, Marshall JC, Parker MM, Ramsay G, Zimmerman JL, Vincent JL, Levy MM : Surviving sepsis campaign guidelines for management of severe sepsis and septic shock. *Crit Care Med* 32 : 858-873, 2004
  26. Dellinder RP, Levy MM, Carlet JM, Bion J, Parker MM, Jaeschke R, Reinhart K, Angus DC, Brun-Buisson C, Beale R, Calandra T, Dhainaut JF, Gerlach H, Harvey M, Marini JJ, Marshall J, Ranieri M, Ramsay G, Sevransky J, Thompson BT, Townsend S, Vender JS, Zimmerman JL, Vincent JL : Surviving sepsis campaign : international guidelines for management of severe sepsis and septic shock : 2008. *Crit Care Med* 36 : 296-327, 2008
  27. Brunkhorst FM, Engel C, Bloos F, Meier-Hellmann A, Ragaller M, Weiler N, Moerer O, Gruendling M, Oppert M, Grond S, Olthoff D, Jaschinski U, John S, Rossaint R, Welte T, Schaefer M, Kern P, Kuhnt E, Kiehntopf M, Hartog C, Natanson C, Loeffler M, Reinhart K : Intensive insulin therapy and pentastarch resuscitation in severe sepsis. *N Eng J Med* 358 : 125-139, 2008
  28. Preiser JC, Devos P, Ruiz-Santana S, Mélot C, Annane D, Groeneveld J, Iapichino G, Lerverve X, Nitenberg G, Singer P, Wernerman J, Joannidis M, Stecher A, Chioléro R : A prospective randomized multi-center controlled trial on tight glucose control by intensive insulin therapy in adult intensive care units : the Glucontrol study. *Intensive Care Med* 35 : 1738-1748, 2009
  29. The NICE-SUGAR Study Investigators. Intensive versus conventional glucose control in critically ill patients. *N Eng J Med* 360 : 1283-1297, 2009
  30. Wiener RS, Wiener DC, Larson RJ : Benefits and risks of tight glucose control in critically ill adults : a meta-analysis. *JAMA* 300 : 933-944, 2008
  31. Arabi YM, Dabbagh OC, Tamim HM, Al-Shimemeri AA, Memish ZA, Haddad SH, Syed SJ, Giridhar HR, Rishu AH, Al-Daker MO, Kahoul SH, Britts RJ, Sakkijha MH : Intensive versus conventional insulin therapy : a randomized controlled trial in medical and surgical critically ill patients. *Crit Care Med* 36 : 3190-3197, 2008
  32. Furnary AP, Zerr KJ, Grunkemeier GL, Starr A : Continuous intravenous insulin infusion reduces the incidence of deep sternal wound infection in diabetic patients after cardiac surgical procedures. *Ann Thorac Surg* 67 : 352-362, 1999
  33. Golden SH, Peart-Vigilance C, Kao WH, Brancati FL : Perioperative glycemic control and the risk of infections complications in a cohort of adults with diabetes. *Diabetes Care* 22 : 1408-1414, 1999
  34. Furnary AP, Gao G, Grunkemeier GL, Wu Y, Zerr KJ, Bookin SO, Floten HS, Starr A : Continuous insulin infusion reduces mortality in patients with diabetes undergoing coronary artery bypass grafting. *J Thorac Cardiovasc Surg* 125 : 1007-1021, 2003
  35. Lazar HL, Chipkin SR, Fitzgerald CA, Bao Y, Cabral H, Apstein CS : Tight glycemic control in diabetic coronary artery bypass graft patients improves perioperative outcomes and decreases recurrent ischemic events. *Circulation* 109 : 1497-1502, 2004
  36. Quattara A, Lecomte P, Manach YL, Landi M, Jacqueminet S, Platonov I, Bonnet N, Riou B, Coriat P : Poor intraoperative blood glucose control is associated with a worsened hospital outcome after cardiac surgery in diabetic patients. *Anesthesiology* 103 : 687-694, 2005
  37. Lecomte P, Foubert L, Nobels F, Coddens J, Nollet G, Casselman F, Crombrugge PV, Vandenbroucke G, Cammu G : Dynamic tight glycemic control during and after cardiac surgery is effective, feasible, and safe. *Anesth Analg* 107 : 51-58, 2008
  38. Doenst T, Wijeyesundera D, Karkouti K, Zechner C, Maganti M, Rao V, Borger MA : Hyperglycemia during cardiopulmonary bypass is an independent risk factor for mortality in patients undergoing cardiac surgery. *J Thorac Cardiovasc Surg* 130 : 1144-1150, 2005

39. Shann KG, Likosky DS, Murkin JM, Baker RA, Baribeau YR, DeFoe GR, Dickinson TA, Gardner TJ, Grocott HP, O'Connor GT, Rosinski DJ, Sellke FW, Willcox TW : An evidence-based review of the practice of cardiopulmonary bypass in adults : a focus on neurologic injury, glycemic control, hemodilution, and the inflammatory response. *J Thorac Cardiovasc Surg* 132 : 283-290, 2006
40. Hanazaki K, Nosé Y, Brunicardi FC : Artificial endocrine pancreas. *J Am Coll Surg* 193 : 310-322, 2001
41. Kono T, Hanazaki K, Yazawa K, Ashizawa S, Fisher WE, Wang XP, Nosé Y, Brunicardi FC : Pancreatic polypeptide administration reduces insulin requirements of artificial pancreas in pancreatectomized dogs. *Artificial Organs* 29 : 83-87, 2005
42. Yamashita K, Okabayashi T, Yokoyama T, Yatabe T, Maeda H, Manabe M, Hanazaki K : The accuracy of a continuous blood glucose monitor during surgery. *Anesth Analg* 106 : 160-163, 2008
43. Yamashita K, Okabayashi T, Yokoyama T, Yatabe T, Maeda H, Manabe M, Hanazaki K : Accuracy and reliability of continuous blood glucose monitor in post-surgical patients. *Acta Anaesthesiol Scand* 53 : 66-71, 2009
44. Chase JG, Hann CE, Jackson M, Lin J, Lotz T, Wong XW, Shaw GM : Integral-based filtering of continuous glucose sensor measurements for glycaemic control in critical care. *Comput Methods Programs Biomed* 82 : 238-247, 2006
45. Egi M, Bellomo R, Stachowski E, French CJ, Hart G : Variability of blood glucose concentration and short-term mortality in critically ill patients. *Anesthesiology* 105 : 244-252, 2006
46. Egi M, Bellomo R, Reade MC : Is reducing variability of blood glucose the real but hidden target of intensive insulin therapy? *Crit Care* 13 : 302, 2009
47. Okabayashi T, Hanazaki K, Nishimori I, Sugimoto T, Maeda H, Yatabe T, Dabanaka K, Kobayashi M, Yamashita K. Continuous post-operative blood glucose monitoring and control using a closed-loop system in patients undergoing hepatic resection. *Dig Dis Sci* 53 : 1405-1410, 2008
48. Hanazaki K, Maeda H, Okabayashi T : Tight perioperative glycemic control using an artificial endocrine pancreas. *Surg Today* 40 : 1-7, 2010
49. Hanazaki K, Maeda H, Okabayashi T : Relationship between perioperative glycemic control and postoperative infections. *World J Gastroenterol* 15 : 4122-4125, 2009
50. Okabayashi T, Maeda H, Sun ZL, Montgomery RA, Nishimori I, Hanazaki K : Perioperative insulin therapy using a closed-loop artificial endocrine pancreas after hepatic resection. *World J Gastroenterol* 15 : 4116-4121, 2009
51. Action to Control Cardiovascular Risk in Diabetes Study Group : Effects of intensive glucose lowering in type 2 diabetes. *N Eng J Med* 358 : 2545-2559, 2008
52. ADVANCE Collaborative Group : Intensive blood glucose control and vascular outcomes in patients with type 2 diabetes. *N Eng J Med* 258 : 2560-2572, 2008
53. Hudson CC, Welsby IJ, Phillips-Bute B, Mathew JP, Lutz A, Chad Hughes G, Stafford-Smith M : Glycosylated hemoglobin levels and outcome in non-diabetic cardiac surgery patients. *Can J Anaesth* 57 : 565-572, 2010
54. Maruo K, Oota T, Tsurugi M, Nakagawa T, Arimoto H, Hayakawa M, Tamura M, Ozaki Y, Yamada Y : Noninvasive near-infrared blood glucose monitoring using a calibration model built by a numerical simulation method : trial application to patients in an intensive care unit. *Appl Spectrosc* 60 : 1423-1431, 2006