

Lysophosphatidic acid stimulates the proliferation and motility of malignant pleural mesothelioma cells through lysophosphatidic acid receptors, LPA1 and LPA2

著者	Yamada Tadaaki, Yano Seiji, Ogino Hirokazu, Ikuta Kenji, Kakiuchi Soji, Hanibuchi Masaki, Kanematsu Takanori, Taniguchi Tetsuo, Sekido Yoshitaka, Sone Saburo
journal or publication title	Cancer Science
volume	99
number	8
page range	1603-1610
year	2008-01-01
URL	<a href="http://hdl.handle.net/2297/11875">http://hdl.handle.net/2297/11875</a>

doi: 10.1111/j.1349-7006.2008.00848.x

Cancer Science

**Lysophosphatidic acid stimulates the proliferation and motility of malignant pleural mesothelioma cells through LPA receptors, LPA<sub>1</sub> and LPA<sub>2</sub>**

Tadaaki Yamada<sup>1</sup>, Seiji Yano<sup>1,2</sup>, Hirokazu Ogino<sup>1</sup>, Kenji Ikuta<sup>1</sup>, Soji Kakiuchi<sup>1</sup>, Masaki Hanibuchi<sup>1</sup>, Takanori Kanematsu<sup>1</sup>, Tetsuo Taniguchi<sup>3</sup>, Yoshitaka Sekido<sup>3</sup>, and Saburo Sone<sup>1</sup>

<sup>1</sup>*Department of Internal Medicine and Molecular Therapeutics, Institute of Health Biosciences, University of Tokushima Graduate School, Tokushima, Japan;*

<sup>2</sup>*Division of Medical Oncology, Cancer Research Institute, Kanazawa University, Ishikawa, Japan;*

<sup>3</sup>*Division of Molecular Oncology, Aichi Cancer Center Research Institute, Aichi, Japan;*

**Short running title:** LPA stimulates MPM via LPA receptors.

1  
2  
3  
4  
5  
6  
7 **Key words:** Lysophosphatidic acid; Lysophosphatidic acid receptors; malignant  
8  
9  
10 pleural mesothelioma; cell proliferation; cell motility  
11  
12  
13  
14  
15

16 **Address correspondence and reprint requests to:**  
17

18 Saburo Sone M.D. & Ph.D., Department of Internal Medicine and Molecular  
19

20  
21 Therapeutics, Institute of Health Biosciences, University of Tokushima Graduate  
22

23  
24 School, Tokushima, 3-18-15 Kuramoto-cho, Tokushima 770-8503, Japan.  
25

26  
27  
28 Phone: +81-88-633-7127; Fax: +81-88-633-2134,  
29

30  
31 E-mail: [ssone@clin.med.tokushima-u.ac.jp](mailto:ssone@clin.med.tokushima-u.ac.jp)  
32  
33  
34  
35  
36  
37  
38  
39  
40  
41  
42  
43  
44  
45  
46  
47  
48  
49  
50  
51  
52  
53  
54  
55  
56  
57  
58  
59  
60

## Summary

Lysophosphatidic Acid (LPA) is one of the simplest natural phospholipids. This phospholipid is recognized as an extracellular potent lipid mediator with diverse effects on various cells. Although LPA is shown to stimulate proliferation and motility via LPA receptors, LPA<sub>1</sub> and LPA<sub>2</sub>, in several cancer cell lines, the role of LPA and LPA receptors for malignant pleural mesothelioma (MPM) was unknown. MPM is an aggressive malignancy with a poor prognosis and the incidence is increasing and is expected to more increase for another 10 to 20 years in worldwide. Therefore development of novel effective therapies needs urgently. In this study, we investigated the effect of LPA on the proliferation and motility of MPM cells. We found that all twelve cell lines and four clinical samples of MPM expressed LPA<sub>1</sub>, and some of them expressed LPA<sub>2</sub>, LPA<sub>3</sub>, LPA<sub>4</sub>, and LPA<sub>5</sub>. LPA stimulated the proliferation and motility of MPM cells in a dose-dependent manner. Moreover, LPA-induced proliferation was inhibited by Ki16425, an inhibitor of LPA<sub>1</sub>, and small interfering RNA against LPA<sub>1</sub>, but not LPA<sub>2</sub>. Interestingly, LPA-induced motility was inhibited by small interfering RNA against LPA<sub>2</sub>, but not LPA<sub>1</sub>, unlike a number of previous reports. These results indicate that LPA is a critical factor on proliferation through LPA<sub>1</sub>, and on motility

1  
2  
3  
4  
5  
6  
7 though LPA<sub>2</sub> in MPM cells. Therefore, LPA and LPA receptors, LPA<sub>2</sub> as well as  
8  
9  
10 LPA<sub>1</sub>, represent potential therapeutic targets for patients with MPM.  
11  
12  
13  
14  
15

## 16 **Abbreviations**

17  
18 MPM, malignant pleural mesothelioma; SV40, the simian virus 40; LPA,  
19  
20  
21  
22 Lysophosphatidic acid; GPCRs, GTP binding protein-coupled receptors; FBS,  
23  
24  
25 fetal bovine serum; RT-PCR, reverse transcription-PCR; BSA, bovine serum  
26  
27  
28 albumin; MAPK, mitogen activated protein kinase; SCID, severe combined  
29  
30  
31 immunodeficiency  
32  
33  
34  
35  
36  
37  
38  
39  
40  
41  
42  
43  
44  
45  
46  
47  
48  
49  
50  
51  
52  
53  
54  
55  
56  
57  
58  
59  
60

## Introduction

Malignant pleural mesothelioma (MPM) is an aggressive tumor arising from the mesothelial cells in the pleural cavity. It is frequently diagnosed at locally advanced stage and is refractory to conventional treatment regimens, such as chemotherapy and radiation therapy, and so its prognosis is extremely poor.

Several etiological factors, including asbestos (1,2), iron (3), the simian virus 40 (SV40), radiation and thorotrast (4), have been reported to be involved in the development of MPM. Of these factors, exposure to asbestos is most closely related to the development of MPM. Prior to the recognition of its adverse health effects, large amounts of asbestos were used worldwide. As the latent period between the first exposure to asbestos and the occurrence of MPM tends to be from 30 to 40 years, it is expected that there will be rapid increases in the number of MPM patients in Europe and Australia from 2015 to 2020 (5) and in Japan from 2010 to 2040 (2). Thus, the incidence of MPM is expected to increase further for another 10 to 20 years worldwide, although the disease has already reached its peak incidence in the USA (5). The major reasons for the poor prognosis of MPM are 1) the highly proliferating and invasive characteristics of the disease and 2) its resistance to conventional

1  
2  
3  
4  
5  
6  
7 chemotherapy and radiotherapy. Therefore, novel effective therapeutic  
8  
9  
10 strategies based on the molecular mechanisms of proliferation and  
11  
12 motility/invasion of MPM are required to improve the prognosis of this disease.  
13  
14

15  
16 While several growth factors, including platelet-derived growth factor A and B,  
17  
18 epidermal growth factor, transforming growth factor  $\beta$ , and vascular endothelial  
19  
20 growth factor, were reported to be involved in the progression of MPM (5), the  
21  
22 molecular mechanisms of the proliferation and motility/invasion of MPM are not  
23  
24  
25  
26  
27  
28 fully understood.  
29

30  
31 Lysophosphatidic acid (LPA) is one of the simplest natural phospholipids. It is  
32  
33 present in serum at concentrations of 2–20  $\mu\text{M}$  (6) and is derived from various  
34  
35 enzymatic mechanisms, such as activated platelets, fibroblasts, adipocytes, and  
36  
37 ovarian tumors (6–8). Recently, this phospholipid has attracted a great deal of  
38  
39 attention as a potent lipid mediator responsible for multiple cellular processes  
40  
41 (9), such as cell proliferation, platelet aggregation, smooth muscle contraction,  
42  
43 and cytoskeletal reorganization. In fact, extracellular LPA has been shown to be  
44  
45 associated with various diseases, including atherosclerosis (10) and cancer  
46  
47 (11–13). LPA exerts its multiple biological functions *via* three types of G  
48  
49 protein-coupled receptor (GPCR), LPA<sub>1</sub>, LPA<sub>2</sub>, and LPA<sub>3</sub>. These receptors  
50  
51  
52  
53  
54  
55  
56  
57  
58  
59  
60

1  
2  
3  
4  
5  
6  
7 share 50–54% amino acid homology and transmit their signals *via* three families  
8  
9  
10 of heterotrimeric G proteins, G<sub>i</sub>, G<sub>q</sub>, and G<sub>12/13</sub> (14). Furthermore, more recent  
11  
12  
13 studies have identified orphan GTP binding protein-coupled receptors (GPCRs),  
14  
15  
16 LPA<sub>4</sub> (15) and LPA<sub>5</sub> (16).  
17

18  
19 The mechanisms of action of LPA receptors differ among subtypes, and they  
20  
21 are expressed at different levels in both normal and malignant tissues. In  
22  
23  
24 normal tissues, LPA<sub>1</sub> is highly expressed in the brain and heart, LPA<sub>2</sub> is highly  
25  
26  
27 expressed in the testis and leukocytes, LPA<sub>3</sub> is highly expressed in the kidney  
28  
29  
30 and prostate (17,18), and LPA<sub>4</sub> is expressed highly in the ovary (15). In  
31  
32  
33 malignant tumors, LPA<sub>1</sub> is dominant in brain tumors (19), LPA<sub>2</sub> is predominantly  
34  
35  
36 expressed in colon, stomach, thyroid, and breast cancers (20–22), and LPA<sub>3</sub> is  
37  
38  
39 expressed at relatively high levels in ovarian and prostate cancers (19,23).  
40  
41  
42

43  
44 Another study showed that the expression pattern of LPA receptors is  
45  
46  
47 associated with cancer differentiation in gastric cancer cells (24). Moreover,  
48  
49  
50 LPA<sub>1</sub> has recently been reported to control tumor cell proliferation in prostate  
51  
52  
53 (25) and breast cancer cells (26) and LPA<sub>2</sub> was shown to mediate the growth of  
54  
55  
56 ovarian (27), thyroid (21), and colon cancer cells (28). Interestingly, LPA<sub>1</sub> also  
57  
58  
59 stimulates the motility of various types of cancer, such as pancreas, colon,  
60



1  
2  
3  
4  
5  
6 glioblastoma, and gastric cancer (19,24,28,29). Thus, LPA receptors play  
7  
8  
9  
10 crucial roles at least in cancer proliferation and motility/invasion. However, the  
11  
12  
13 roles of LPA receptors and their downstream signaling pathways in MPM are  
14  
15  
16 unknown.

17  
18  
19 The present study was performed to explore the expression of LPA receptors  
20  
21  
22 in human MPM cell lines and further elucidate the roles of five LPA receptors in  
23  
24  
25 the malignant properties of MPM cells in terms of proliferation and motility.  
26  
27  
28  
29  
30  
31  
32  
33  
34  
35  
36  
37  
38  
39  
40  
41  
42  
43  
44  
45  
46  
47  
48  
49  
50  
51  
52  
53  
54  
55  
56  
57  
58  
59  
60

## Materials and Methods

### *Cell lines and culture conditions.*

In this study, we used twelve human MPM cell lines, EHMES-1, EHMES-10, MSTO-211H, Y-MESO-8A, NCI-H28, NCI-H290, NCI-H513, NCI-H2052, NCI-H2373, NCI-H2452, ACC-MESO-1, and ACC-MESO-4. EHMES-1 and EHMES-10 (30,31) were kindly provided by Dr Hironobu Hamada (Ehime University, Matsuyama, Japan). NCI-H290 and NCI-H513 were kindly provided by Dr Adi F. Gazdar (University of Texas Southwestern Medical Center, Dallas, TX). Y-MESO-8A, ACC-MESO-1, and ACC-MESO-4 (32) were established in Aichi Cancer Center Research Institute. MSTO-211H, NCI-H28, NCI-H2052, NCI-H2373, and NCI-H2452 were purchased from American Type Culture Collection (Manassas, VA).

All human tumor cell lines were maintained in RPMI 1640 medium supplemented with 10% fetal bovine serum (FBS), penicillin (100 U/ml), and streptomycin (50 µg/ml); this was designated as RPMI 1640 in this study. Cells were cultured in a humidified CO<sub>2</sub> incubator at 37°C.

### *Clinical specimens.*

1  
2  
3  
4  
5  
6  
7 All human MPM samples were obtained from the Department of Internal  
8  
9  
10 Medicine and Molecular Therapeutics, University of Tokushima Graduate School.  
11  
12  
13 Written informed consent was obtained from all subjects prior to tissue  
14  
15  
16 sampling.  
17  
18  
19  
20  
21

### 22 **Reagents.**

23  
24  
25 1-Oleoyl-LPA (18:1) and Ki16425 were purchased from Sigma-Aldrich Inc. (St.  
26  
27  
28 Louis, MO).  
29  
30  
31  
32  
33  
34

### 35 **Expression of LPA<sub>1</sub>, LPA<sub>2</sub>, LPA<sub>3</sub>, LPA<sub>4</sub>, and LPA<sub>5</sub>.**

36  
37  
38  
39  
40 LPA<sub>1</sub>, LPA<sub>2</sub>, LPA<sub>3</sub>, LPA<sub>4</sub>, and LPA<sub>5</sub> mRNA expression were determined by  
41  
42  
43 reverse transcription-PCR (RT-PCR). Total RNA samples were isolated using  
44  
45  
46 an RNeasy Mini kit and RNase-free DNase kits (Qiagen, Valencia, CA) in  
47  
48  
49 accordance with the manufacturer's recommendations. Total RNAs were  
50  
51  
52 reverse transcribed using an Omniscript RT kit (Qiagen). The primers for LPA<sub>1</sub>,  
53  
54  
55 LPA<sub>2</sub>, LPA<sub>3</sub>, LPA<sub>4</sub>, LPA<sub>5</sub>, and  $\beta$ -actin were as follows:  
56  
57  
58  
59  
60

1  
2  
3  
4  
5  
6  
7 LPA<sub>1</sub>: 5'-TGGCTGCCATCTCTACTTCC-3' and

8  
9 5'-AACCAATCCAGGAGTCCAGC-3', LPA<sub>2</sub>:

10  
11  
12 5'-CATCATGCTTCCCGACAACG-3' and 5'-GGGCTTACCAAGGATACGCAG-3',

13  
14  
15  
16 LPA<sub>3</sub>: 5'-AGTGTCACTATGACAAGC-3' and 5'-GAGATGTTGCAGAGGC-3',

17  
18  
19 LPA<sub>4</sub>: 5'-TGAAGGCTTCTCCAAACGTGTCTG-3' and

20  
21  
22 5'-GTTTCAGAGTTGCAAGGCACAAGGT-3', LPA<sub>5</sub>:

23  
24  
25 5'-CTGGATCTAAACCGCCACAG-3' and 5'-GCCTGGAAAAGGGGATGT-3',

26  
27  
28 and  $\beta$ -actin: 5'-AAGAGAGGCATCCTCACCCCT-3' and

29  
30  
31 5'-TACATGGCTGGGGTGTGAA-3'.

32  
33  
34  
35 PCR was performed with Ex Taq Hot Start Version (Takara Bio, Shiga, Japan).

36  
37  
38 The bands were visualized by ethidium bromide staining. Data shown are

39  
40  
41 representative of three independent experiments.

#### 42 43 44 45 46 47 48 49 50 **Cell proliferation assay.**

51  
52  
53  
54 Cell proliferation was measured by the

55  
56  
57 3-(4,5-dimethylthiazol-2-yl)-2,5-diphenyltetrazolium bromide dye reduction

58  
59  
60 method (33). Briefly, tumor cells seeded in 96-well plates ( $5 \times 10^3$  per well) were

1  
2  
3  
4  
5  
6  
7 incubated in RPMI 1640 for 24 h. The cells were starved for 24 h by replacing  
8  
9  
10 the medium with serum-free RPMI 1640 medium containing 0.1% fatty acid-free  
11  
12 bovine serum albumin (BSA), with or without LPA and/or Ki16425, an inhibitor  
13  
14 of LPA<sub>1</sub> (and LPA<sub>3</sub> at higher doses) (34). The cells were cultured for 48 h. Then,  
15  
16 an aliquot of 50 µL of stock 3-(4,5-dimethylthiazol-2-yl)-2,5-diphenyltetrazolium  
17  
18 bromide solution (2 mg/mL; Sigma, St. Louis, MO) was added to each plate and  
19  
20 the cells were incubated for 2 h at 37°C. The media containing  
21  
22 3-(4,5-dimethylthiazol-2-yl)-2,5-diphenyltetrazolium bromide solution were  
23  
24 removed and the dark blue crystals were dissolved by adding 100 µL of DMSO.  
25  
26 Absorbance was measured with an MTP-120 microplate reader (Corona Electric,  
27  
28 Ibaraki, Japan) at test and reference wavelengths of 550 and 630 nm,  
29  
30 respectively. Data shown are representative of three independent experiments.  
31  
32  
33  
34  
35  
36  
37  
38  
39  
40  
41  
42  
43  
44  
45  
46  
47  
48

#### 49 ***Cell migration assay.***

50  
51  
52  
53 Cell migration was quantified in Falcon Cell Culture Inserts (pore size 8 µm; BD  
54  
55 Biosciences, San Jose, CA). Cells suspended in serum-free RPMI 1640  
56  
57 containing 0.1% fatty acid-free BSA, with or without LPA and/or Ki16425, were  
58  
59  
60

1  
2  
3  
4  
5  
6  
7 added to the upper chamber ( $1 \times 10^5$  cells in 100  $\mu$ l/well). Serum-free RPMI 1640  
8  
9  
10 containing 0.1% fatty acid-free BSA, containing human fibronectin (5  $\mu$ g/ml; BD  
11  
12 Biosciences) as a chemoattractant was placed in the lower chamber. When the  
13  
14  
15  
16 cells treated with Ki16425, the cells were preincubated with 10  $\mu$ M Ki16425 for  
17  
18  
19 30 min. The cells were allowed to migrate for 3 h at 37°C. Non-migratory cells  
20  
21  
22 were removed from the top filter surface with a cotton swab. Migrated cells,  
23  
24  
25 attached to the bottom surface, were fixed with methanol, stained with Giemsa,  
26  
27  
28 mounted, and then counted. Data shown are representative of three  
29  
30  
31 independent experiments.  
32  
33  
34  
35  
36  
37  
38  
39  
40

#### ***RNA interference.***

41  
42  
43 Three different duplexed Stealth™ RNAi (Invitrogen, Carlsbad, CA) against  
44  
45  
46 LPA<sub>1</sub> and LPA<sub>2</sub>, and Stealth RNAi Negative Control Kit (Invitrogen) were used  
47  
48  
49 for RNA interference assay. Briefly, aliquots of  $1 \times 10^5$  211H, H28, or H2052 cells  
50  
51  
52 in 2 ml of antibiotic-free medium were plated on 6-well plates and incubated at  
53  
54  
55 37°C for 24 h, and the cells were then transfected with siRNA (250 pmol) or  
56  
57  
58 scramble RNA (siSCR) using Lipofectamine 2000 (5  $\mu$ l) in accordance with the  
59  
60

1  
2  
3  
4  
5  
6  
7 manufacturer's instructions. After 24-h incubation, the cells were washed twice  
8  
9  
10 with PBS, and incubated in antibiotic-containing medium. These cells were then  
11  
12  
13 used for proliferation or migration assay as described above. LPA<sub>1</sub> and LPA<sub>2</sub>  
14  
15  
16 knockdown were confirmed by RT-PCR analysis. The sense sequences of  
17  
18  
19 siRNA were as follows:

20  
21  
22 siLPA1#1: 5'- AACCAAUCCAGGAGUCCAGCAGAUG-3' and 5'-

23  
24  
25 CAUCUGCUGGACUCCUGGAUUGGUU-3'; siLPA1#2: 5'-

26  
27  
28 AUUACAGGGAUGGAAGUAGAGAUGG-3' and 5'-

29  
30  
31 CCAUCUCUACUCCAUCCCUGUAAU-3'; siLPA1#3: 5'-

32  
33  
34 AUAGAUUGCCACCAUGACCAAUAGG-3' and 5'-

35  
36  
37 CCUAUUGGUCAUGGUGGCAAUCUAU-3'; siLPA2#1: 5'-

38  
39  
40 UACACAGCAGCAUUGACCAGUGAGU-3' and 5'-

41  
42  
43 ACUCACUGGUCAAUGCUGCUGUGUA-3'; siLPA2#2: 5'-

44  
45  
46 AUGUAUAGUGGACAGACUCGCGGGU-3' and 5'-

47  
48  
49 ACCCGCGAGUCUGUCCACUAUACAU-3'; siLPA2#3: 5'-

50  
51  
52 UGUGGAACAUGAGGAAGAGGUAGGC-3' and 5'-

53  
54  
55 GCCUACCUCUCCUCAUGUCCACA-3'.

**Western blotting.**

Tumor cells were washed twice with PBS, harvested in cell lysis buffer (20 mM Tris, pH7.4, 150 mM NaCl, 1 mM EDTA, 1 mM EGTA, 1% Triton X-100, 2.5 mM sodium pyrophosphate, 1 mM  $\beta$ -glycerolphosphate, 1 mM  $\text{Na}_3\text{VO}_4$ , 1  $\mu\text{g}/\text{ml}$  leupeptin, and 1 mM phenylmethylsulfonyl fluoride), and flash-frozen on dry ice. After allowing the cells to thaw, the cell lysates were collected with a rubber scraper, sonicated, and centrifuged at  $14000\times g$  ( $4^\circ\text{C}$  for 20 min). The total protein concentration was measured using a Pierce BCA Protein Assay Kit (Pierce, Rockland, IL). Cell lysates were subjected to SDS-polyacrylamide gel electrophoresis, and the proteins were then transferred onto PVDF membranes (Atto, Tokyo, Japan). The membranes were blocked with Blocking One (Nacalai Tesque Inc, Kyoto, Japan) for 1 h at room temperature, and then the blots were incubated at  $4^\circ\text{C}$  overnight with anti-phospho-p44/42 mitogen-activated protein kinase (MAPK) (Thr202/Tyr204), anti-p44/42 MAPK (1:1000 dilution; Cell Signaling Technology, Beverly, MA), or anti- $\beta$ -actin antibody (1:5000 dilution; Sigma), followed by incubation for 2 h at room temperature with secondary Ab (horseradish peroxidase-conjugated species-specific Ab). Immunoreactive bands were visualized using enhanced chemiluminescent substrate (Pierce).



***RhoA activity assay.***

We determined RhoA activation as the amount of RhoA-GTP binding using a G-LISA RhoA<sup>TM</sup> Activation Assay Biochem Kit<sup>TM</sup> (Cytoskeleton, Denver, CO), in accordance with the manufacturer's recommendations. Briefly, tumor cells ( $2 \times 10^5$  per well) seeded in 6-well plates were incubated in RPMI 1640 containing 10% FBS for 24 h. The cells were starved for 24 h by replacing the medium with serum-free RPMI 1640 medium containing 0.1% BSA. The dishes were then treated with LPA (10  $\mu$ M) for 0, 1, 3, 6, 12, and 30 min. The tumor cells were washed twice with PBS and harvested in cell lysate with a cell scraper, sonicated, and centrifuged at  $10000 \times g$  (4°C for 2 min). The total protein concentration was measured using Precision Red<sup>TM</sup> Advanced Protein Assay Reagent. Equal amounts of cell lysate protein were incubated in Rho-GTP affinity plates for 30 min at 4°C. To the plates was added anti-RhoA primary antibody, followed by secondary HRP-labeled antibody and HRP detection reagent, and incubated at room temperature for the time recommended by the manufacturer. Absorbance was measured with an MTP-120 microplate reader at wavelength of 490 nm. Data shown are representative of three independent

1  
2  
3  
4  
5  
6  
7 experiments with similar results.  
8  
9

10  
11  
12  
13 ***Statistical analysis.***  
14

15  
16 All data, expressed as means  $\pm$  SE, were analyzed by one-way analysis of  
17  
18 variance. The statistical significance of differences was assessed by the Fisher  
19  
20 protected least-significant difference test. *P* values less than 0.05 were  
21  
22 considered statistically significant. Statistical analyses were performed using  
23  
24  
25  
26  
27  
28  
29 StatView ver.5.0.  
30  
31  
32  
33  
34  
35  
36  
37  
38  
39  
40  
41  
42  
43  
44  
45  
46  
47  
48  
49  
50  
51  
52  
53  
54  
55  
56  
57  
58  
59  
60

## Results

### ***Human MPM cell lines expressed LPA<sub>1</sub>, LPA<sub>2</sub>, LPA<sub>3</sub>, LPA<sub>4</sub>, and LPA<sub>5</sub> at various levels.***

In the first set of experiments, we examined the mRNA expression of five LPA receptors (LPA<sub>1</sub>, LPA<sub>2</sub>, LPA<sub>3</sub>, LPA<sub>4</sub>, and LPA<sub>5</sub>) in twelve human MPM cell lines by RT-PCR (Fig. 1A). All of the MPM cell lines examined expressed LPA<sub>1</sub> mRNA at various levels. Of these cell lines, 211H, H28, H290, H2052, and H2373 cells showed higher levels of expression as compared with the others. On the other hand, some of the MPM cell lines expressed LPA<sub>2</sub>. Y-MESO-8A, H290, H2052, and ACC-MESO-4 cells showed high levels of LPA<sub>2</sub> expression as compared with the other cell lines. Similarly, some of the MPM cell lines expressed LPA<sub>3</sub>, LPA<sub>4</sub>, and LPA<sub>5</sub>. In parallel experiments, we examined LPA<sub>1</sub>, LPA<sub>2</sub>, LPA<sub>3</sub>, LPA<sub>4</sub>, and LPA<sub>5</sub> mRNA expression in tumor specimens obtained from four patients with MPM (Fig. 1B). Consistent with the results in the cell lines examined, all samples expressed LPA<sub>1</sub> and some expressed LPA<sub>2</sub>, LPA<sub>3</sub>, LPA<sub>4</sub>, and LPA<sub>5</sub>.

### ***LPA stimulated the proliferation of MPM cells via LPA<sub>1</sub>.***

1  
2  
3  
4  
5  
6  
7 We determined the effects of LPA on proliferation of MPM cells. Exogenous  
8  
9  
10 LPA at physiological concentrations (up to 20  $\mu$ M) significantly stimulated the  
11  
12 proliferation of 5 of the 11 MPM cell lines examined (data not shown). Of these  
13  
14  
15 cell lines, 211H and H28 cells responded well to LPA in a dose-dependent  
16  
17  
18 manner (Fig. 2A). Therefore, these two cell lines were used to investigate  
19  
20  
21 whether LPA receptors are involved in LPA-induced proliferation, when the  
22  
23  
24 effects of Ki16425, an inhibitor of LPA<sub>1</sub> (and LPA<sub>3</sub> at higher doses), on  
25  
26  
27 proliferation were examined. Ki16425 inhibited LPA-induced proliferation of both  
28  
29  
30 211H and H28 cells in a dose-dependent manner (Fig. 2B). In a parallel  
31  
32  
33 experiment, we examined the effects of small interfering RNA (siRNA) against  
34  
35  
36 LPA<sub>1</sub> and LPA<sub>2</sub>. Knockdown of LPA<sub>1</sub> resulted in significant inhibition of the  
37  
38  
39 LPA-induced proliferation of both 211H and H28 cells. These results were  
40  
41  
42 confirmed using serum-starved media with LPA, as well as media containing  
43  
44  
45 10% FBS (data not shown). However, knockdown of LPA<sub>2</sub> had little impact on  
46  
47  
48 LPA-induced proliferation of 211H or H28 cells (Fig. 2C). These results  
49  
50  
51 indicated that LPA stimulated the proliferation of these two MPM cell lines *via*  
52  
53  
54  
55 LPA<sub>1</sub> receptors.  
56  
57  
58  
59  
60

***LPA activates p44/42 MAPK through LPA<sub>1</sub>.***

To determine the mechanism by which LPA<sub>1</sub>-mediated proliferation of MPM cells, we next examined the phosphorylation of MAPK, which is the downstream signal of GPCRs. MPM cells were stimulated with LPA (10 μM) for 0, 2, or 6 h, and the phosphorylation of MAPK was evaluated by Western blotting. While LPA did not affect MAPK protein expression, it induced the phosphorylation of MAPK (phospho-p44/42 MAPK) in both 211H and H28 cells. The level of phosphorylation became highest after 2 h and the effect was still substantial after 6 h (Fig. 3A). Therefore, we evaluated the phosphorylation of MAPK after 2-h incubation with LPA. In a parallel experiment, siRNA knockdown of LPA<sub>1</sub>, but not of LPA<sub>2</sub>, markedly reduced the phosphorylation of p44/42 MAPK in these two MPM cell lines (Fig. 3B), indicating that LPA activates the p44/42 MAPK pathway *via* LPA<sub>1</sub>.

***LPA stimulates cell motility via LPA<sub>2</sub>.***

We next examined the effect of LPA on the motility of MPM cells using a cell migration assay. LPA stimulated migration of 6 of 10 MPM cell lines (data not shown). Of these MPM cell lines, LPA induced a significant increase in

1  
2  
3  
4  
5  
6  
7 migration of H2052, H2373, and ACC-MESO-4 cells in a dose-dependent  
8  
9  
10 manner (Fig. 4A). However, it did not affect the proliferation of these MPM cells  
11  
12 (data not shown). These observations exclude the possibility that the effect of  
13  
14 cell motility was attributable to differences in proliferation. In turn, these cell  
15  
16 lines were used to examine whether LPA receptors were involved in  
17  
18  
19 LPA-induced motility, when the effect of Ki16425, an inhibitor of LPA<sub>1</sub> (and LPA<sub>3</sub>  
20  
21 at higher doses), on the motility was examined. Ki16425 had no effect on  
22  
23 LPA-induced motility in these MPM cells (Fig. 4B). To clarify the involvement of  
24  
25 LPA<sub>1</sub> and LPA<sub>2</sub>, we further knocked down LPA<sub>1</sub> and LPA<sub>2</sub> expression,  
26  
27 respectively, with siRNA using H2052 cells, because LPA induced the motility of  
28  
29 H2052 cells most efficiently. Knockdown of LPA<sub>2</sub> markedly inhibited  
30  
31 LPA-induced motility of H2052 cells, while knockdown of LPA<sub>1</sub> did not (Fig. 4C).  
32  
33  
34  
35  
36  
37  
38  
39  
40  
41  
42  
43  
44  
45  
46  
47  
48  
49  
50  
51  
52  
53  
54  
55  
56  
57  
58  
59  
60

These results strongly suggest that LPA induces motility *via* LPA<sub>2</sub> in H2052 cells.

### ***LPA activates RhoA through LPA<sub>2</sub>.***

We next investigated the effects of LPA on the activation of RhoA, which is a downstream signal of GPCRs and one of the key molecules for cell motility.

1  
2  
3  
4  
5  
6  
7 H2052 cells were stimulated with LPA (10  $\mu$ M) for 0, 1, 3, 6, 12, or 30 min, and  
8  
9  
10 activation of RhoA was evaluated by G-LISA RhoA<sup>TM</sup> Activation Assay  
11  
12 (Biochem Kit<sup>TM</sup>). LPA induced activation of RhoA, the degree of which became  
13  
14  
15  
16 strongest after 1 min, and the effect decreased within 30 min (Fig. 5A).  
17

18  
19 Therefore, we evaluated RhoA after 1-min incubation with LPA. Knockdown of  
20  
21  
22 LPA<sub>2</sub> with siRNA, but not of LPA<sub>1</sub>, significantly reduced RhoA activation in  
23  
24  
25 comparison with the control level (Fig. 5B). These results suggest that LPA  
26  
27  
28 stimulates cell motility through an LPA<sub>2</sub>-mediated RhoA pathway.  
29  
30  
31  
32  
33  
34  
35  
36  
37  
38  
39  
40  
41  
42  
43  
44  
45  
46  
47  
48  
49  
50  
51  
52  
53  
54  
55  
56  
57  
58  
59  
60

## Discussion

In the present study, we demonstrated that all of the twelve cell lines and four clinical samples of MPM examined expressed LPA<sub>1</sub>, while other types of LPA receptors (LPA<sub>2</sub>, LPA<sub>3</sub>, LPA<sub>4</sub>, and LPA<sub>5</sub>) were expressed only in some of the cell lines and clinical samples, and LPA stimulated the proliferation and motility of several MPM cell lines in a dose-dependent manner. There was no apparent correlation between the response to LPA and the expression level of LPA receptors, although MPM cells with high level of LPA<sub>1</sub> tend to be stimulated proliferation by LPA (data not shown). The histological subtypes, such as epithelial, biphasic, and sarcomatoid, were not also particularly correlated with the response to LPA (data not shown). We also examined the role of LPA and its receptors using a non-cancerous mesothelial cell line, Met-5A. Met-5A cells expressed LPA<sub>1</sub> and LPA<sub>2</sub>, and LPA induced the proliferation, but not migration (data not shown). These observations suggest that MPM is biologically heterogeneous and uses various factors and signaling pathways for cell proliferation and motility. Our results also clearly showed that particular populations of MPM cells essentially utilized the LPA/LPA receptor pathway for both cell proliferation and motility. As the biomarker for MPM, Lindholm et.al



1  
2  
3  
4  
5  
6  
7 reported that gene copy number losses are a major mechanism for  
8  
9  
10 carcinogenesis and copy number changes are associated with a recurrent  
11  
12 pattern (35). Pass et al. reported to predict survival and progression of MPM  
13  
14 patients, using a 27-gene expression profiles (36). However, to our knowledge,  
15  
16 this is the first report of the involvement of LPA/LPA receptors in the malignant  
17  
18  
19 phenotype of MPM.  
20  
21  
22  
23

24  
25 LPA is known to act on specific GPCRs to elicit a wide range of cellular  
26  
27 responses, ranging from cell proliferation and motility of various types of solid  
28  
29 tumor (37). MPM tends to advance locally with pleural effusion, rather than  
30  
31 distant metastasis, and the extent of the disease is directly associated with the  
32  
33 prognosis of MPM patients (5). It is important to understand the molecular  
34  
35 mechanism of MPM pathogenesis in terms of proliferation and motility, because  
36  
37 molecules responsible for MPM progression seem to be ideal targets for  
38  
39 therapy of MPM.  
40  
41  
42  
43  
44  
45  
46  
47  
48  
49

50 Recently, the differential roles of five GPCRs as LPA receptors have  
51  
52 attracted a great deal of attention. Of these receptors, LPA<sub>1</sub> and LPA<sub>2</sub> are  
53  
54 thought to play important roles in the signaling pathways of cancer cells.  
55  
56  
57  
58 Several studies indicated that LPA<sub>1</sub> controls cell proliferation in prostate cancer  
59  
60

1  
2  
3  
4  
5  
6  
7 (25) and breast cancer cells (26). Similarly, LPA<sub>2</sub> was found to mediate  
8  
9  
10 LPA-induced growth of ovarian (27), thyroid (21), and colon cancer cells (29).  
11  
12  
13 Thus, the role of LPA receptors in cell proliferation triggered by LPA appears to  
14  
15  
16 depend on the type of cancer cell line examined. In this study, we demonstrated  
17  
18  
19 that LPA<sub>1</sub>, but not LPA<sub>2</sub>, is a key receptor in LPA-stimulated proliferation of  
20  
21  
22 MPM cells using silencing of LPA receptors.  
23

24  
25 GPCRs, including LPA receptors, have multiple intracellular signaling  
26  
27  
28 mechanisms by small GTPase proteins, Ras, Rho, Rac, and their downstream  
29  
30  
31 cascades (37,38). The activation of Ras-MAPK responsible for cell proliferation  
32  
33  
34 can lead to the nuclear translocation of MAPK followed by gene transcription  
35  
36  
37 and cell cycle progression, and this signaling plays a pivotal role in cancer cell  
38  
39  
40 proliferation and differentiation. In the present study, we showed that LPA  
41  
42  
43 activated the p44/42 MAPK pathway and siRNA for LPA<sub>1</sub>, but not LPA<sub>2</sub>, caused  
44  
45  
46 marked inhibition of cell proliferation and phosphorylation of p44/42 MAPK.  
47  
48  
49  
50 These results strongly suggest that MAPK is involved in the LPA<sub>1</sub>-mediated  
51  
52  
53 proliferation of MPM cells induced by LPA.  
54

55  
56 MPM cells have high motility, facilitate free movement in the pleural cavity  
57  
58  
59 during respiration by extending lubricating glycoproteins, and show disordered  
60

1  
2  
3  
4  
5  
6  
7 invasion into the thoracic cavity (5). LPA is already well known to stimulate cell  
8  
9  
10 motility in many cell types, such as fibroblasts, gliomas, and T-cell lymphomas  
11  
12  
13 (39). LPA-stimulated motility of cancer cells was recently reported to require  
14  
15  
16 signaling *via* LPA<sub>1</sub> in many types of solid tumor, including pancreas, colon,  
17  
18  
19 glioblastoma, and gastric cancer (19,24,28,29). However, this was not the case  
20  
21  
22 in our studies that indicated that the motility of MPM cells was augmented by  
23  
24  
25 LPA through LPA<sub>2</sub>, but not LPA<sub>1</sub>. This was confirmed in the present study using  
26  
27  
28 two different methods. First, treatment with Ki16425, an inhibitor of LPA<sub>1</sub>, did  
29  
30  
31 not inhibit cell migration. Second, knockdown of LPA<sub>2</sub>, but not LPA<sub>1</sub>, effectively  
32  
33  
34 suppressed LPA-induced motility of MPM (H2052) cells. These results  
35  
36  
37 demonstrated that LPA-induced motility of MPM cells is mediated partly, if not  
38  
39  
40 completely, through its interaction with LPA<sub>2</sub>.  
41  
42

43  
44 RhoA is a small GTPase protein that mediates actin microfilament organization  
45  
46  
47 necessary for adhesion, motility, and changes in cell shape (40). Recent studies  
48  
49  
50 have implicated the pathway of RhoA activation, which acts downstream of LPA  
51  
52  
53 receptors, in tumor invasion (41,42). We demonstrated that LPA activated RhoA  
54  
55  
56 and that the effect was significantly, but not completely, diminished by  
57  
58  
59 knockdown of LPA<sub>2</sub>, suggesting that LPA stimulated migration of H2052 cells  
60

1  
2  
3  
4  
5  
6  
7 was mediated by LPA<sub>2</sub> through the RhoA activation pathway. Further studies  
8  
9  
10 are warranted to determine the involvement of other signaling pathways in  
11  
12  
13 LPA<sub>2</sub>-mediated cell-motility of MPM cells.  
14

15  
16 To explore antitumor activity by inhibiting LPA receptors, we used an inhibitor  
17  
18 of LPA<sub>1</sub>, Ki16425, because it is only one commercially available LPA inhibitor at  
19  
20 present. The severe combined immunodeficiency (SCID) mice bearing  
21  
22 subcutaneously inoculated MSTO-211H cells were treated daily from day 19 to  
23  
24 day 30 with s.c. injection of Ki16425 at 20 mg/kg per day. The tumor growth  
25  
26 was measured every 3 days. Under these experimental conditions, treatment  
27  
28 with Ki16425 did not significantly inhibit the tumor growth of MSTO-211 cells  
29  
30 (data was not shown). However, we can not make conclusion by this  
31  
32 experiment, because Ki16425 is an inhibitor of LPA<sub>1</sub>, but not LPA<sub>2</sub>. In addition,  
33  
34 since limited amount of Ki16425 was available, only one dose of Ki16425 was  
35  
36 used and treatment was given only 12 days started at late stage. Therefore,  
37  
38 further experiments with higher doses of Ki16425 for longer duration or dual  
39  
40 inhibitors of LPA<sub>1</sub> and LPA<sub>2</sub>, if available, are warranted to elucidate real role of  
41  
42 LPA receptors in mesothelioma cells *in vivo*.  
43  
44  
45  
46  
47  
48  
49  
50  
51  
52  
53  
54  
55  
56  
57  
58

59 In summary, we demonstrated that MPMs are heterogeneous in terms of the  
60

1  
2  
3  
4  
5  
6  
7 response to LPA and the expression of LPA receptors. However, at least in  
8  
9  
10 particular populations of MPM, LPA stimulated proliferation *via* LPA<sub>1</sub> through  
11  
12  
13 MAPK and motility *via* LPA<sub>2</sub> through RhoA. These novel findings suggest that  
14  
15  
16 LPA<sub>1</sub> and LPA<sub>2</sub> may be one of therapeutic targets for controlling the proliferation  
17  
18  
19 and motility of MPM cells. As MPM develops into locally advanced disease,  
20  
21  
22 novel strategies targeting both LPA<sub>1</sub> and LPA<sub>2</sub> might be beneficial for  
23  
24  
25 suppressing the progression of MPM. Further *in vivo* experiments with dual  
26  
27  
28 inhibitors of LPA<sub>1</sub> and LPA<sub>2</sub>, are warranted.  
29  
30  
31  
32  
33  
34  
35  
36  
37  
38  
39  
40  
41  
42  
43  
44  
45  
46  
47  
48  
49  
50  
51  
52  
53  
54  
55  
56  
57  
58  
59  
60

## Acknowledgements

This work was supported by Grants-in-Aid 17016051 for Cancer Research from the Ministry of Education, Science, Sports and Culture of Japan (S.Sone). We thank Dr Hironobu Hamada for the EHMES-1 and EHMES-10 cell lines and Dr Adi F. Gazdar for the NCI-290 and NCI-H513 cell lines.

For Review

## References

1. Broaddus VC. Asbestos, the mesothelial cell and malignancy: a matter of life or death. *Am J Respir Cell Mol Biol* 1997; 17: 657-9.
2. Morinaga K, Kishimoto T, Sakatani M, Akira M, Yokoyama K, Sera Y. Asbestos-related lung cancer and mesothelioma in Japan. *Industrial Health* 2001; 39, 65-74.
3. Dufresne A, Bégin R, Churg A, Massé S. Mineral fiber content of lungs in patients with mesothelioma seeking compensation in Quebec. *Am J Respir Crit Care Med* 1996; 153: 711-8.
4. Carbone M, Kratzke RA, Testa JR. The pathogenesis of mesothelioma. *Semin Oncol* 2002; 29: 2-17.
5. Robinson BW, Lake RA. Advances in malignant mesothelioma. *N Engl J Med* 2005; 353: 1591-603.
6. Eichholtz T, Jalink K, Fahrenfort I, Moolenaar WH. The bioactive phospholipid lysophosphatidic acid is released from activated platelets. *Biochem J* 1993; 291: 677-80.

- 1  
2  
3  
4  
5  
6  
7 7. Gerrard JM, Robinson P. Identification of the molecular species of  
8  
9  
10 lysophosphatidic acid produced when platelets are stimulated by thrombin.  
11  
12 *Biochim Biophys Acta* 1989; 1001: 282–5.  
13  
14  
15  
16 8. Shen Z, Belinson J, Morton RE, Xu Y, Xu Y. Phorbol 12-myristate  
17  
18 13-acetate stimulates lysophosphatidic acid secretion from ovarian and  
19  
20 cervical cancer cells but not from breast or leukemia cells. *Gynecol Oncol*  
21  
22 1998; 71: 364–8.  
23  
24  
25  
26 9. Aoki J, Taira A, Takanezawa Y, *et al.* Serum lysophosphatidic acid is  
27  
28 produced through diverse phospholipase pathways. *J Biol Chem* 2002; 277:  
29  
30 48737-44.  
31  
32  
33  
34  
35  
36  
37 10. Siess W, Zangl KJ, Essler M, *et al.* Lysophosphatidic acid mediates the  
38  
39 rapid activation of platelets and endothelial cells by mildly oxidized low  
40  
41 density lipoprotein and accumulates in human atherosclerotic lesions. *Proc*  
42  
43 *Natl Acad Sci U S A* 1999; 96: 6931-6.  
44  
45  
46  
47  
48  
49  
50 11. Fang X, Schummer M, Mao M, *et al.* Lysophosphatidic acid is a bioactive  
51  
52 mediator in ovarian cancer. *Biochim Biophys Acta* 2002; 1582: 257-264.  
53  
54  
55  
56 12. Mills GB, May C, Hill M, Campbell S, Shaw P, Marks A. ascitic fluid from  
57  
58 human ovarian cancer patients contains growth factors necessary for  
59  
60



1  
2  
3  
4  
5  
6  
7 intraperitoneal growth of human ovarian adenocarcinoma cells. *J Clin Invest*  
8  
9  
10 1990; 86: 851-5.

11  
12  
13 13. Xu Y, Gaudette DC, Boynton JD, *et al.* Characterization of an ovarian cancer  
14  
15  
16 activating factor in ascites from ovarian cancer patients. *Clin Cancer Res*  
17  
18  
19 1995; 1: 1223-1232.

20  
21  
22 14. Contos JJ, Ishii I, Chun J. Lysophosphatidic acid receptors. *Mol Pharmacol*  
23  
24  
25 2000; 58: 1188-96.

26  
27  
28 15. Noguchi K, Ishii S, Shimizu T. Identification of p2y9/GPR23 as a novel G  
29  
30  
31 protein-coupled receptor for lysophosphatidic acid, structurally distant from  
32  
33  
34 the Edg family. *J Biol Chem* 2003; 278: 25600-6.

35  
36  
37 16. Lee CW, Rivera R, Gardell S, Dubin AE, Chun J. GPR92 as a new G12/13-  
38  
39  
40 and Gq-coupled lysophosphatidic acid receptor that increases cAMP, LPA5.  
41  
42  
43  
44 *J Biol Chem* 2006; 281: 23589-97.

45  
46  
47 17. An S, Bleu T, Hallmark OG, Goetzl EJ. Characterization of a novel subtype  
48  
49  
50 of human G protein-coupled receptor for lysophosphatidic acid. *J Biol Chem*  
51  
52  
53 1998; 273: 7906-10.

- 1  
2  
3  
4  
5  
6  
7 18. Bando K, Aoki J, Hosono H, *et al.* Molecular cloning and characterization of  
8  
9 a novel human G-protein-coupled receptor, EDG7, for lysophosphatidic acid.  
10  
11 J Biol Chem 1999; 274: 27776-85.  
12  
13  
14  
15  
16 19. Kishi Y, Okudaira S, Tanaka M, *et al.* Autotaxin is overexpressed in  
17  
18 glioblastoma multiforme and contributes to cell motility of glioblastoma by  
19  
20 converting lysophosphatidylcholine to lysophosphatidic acid. J Biol Chem  
21  
22 2006; 281: 17492-500.  
23  
24  
25  
26  
27  
28 20. Shida D, Watanabe T, Aoki J, *et al.* Aberrant expression of lysophosphatidic  
29  
30 acid (LPA) receptors in human colorectal cancer. Lab Invest 2004; 84:  
31  
32 1352-62.  
33  
34  
35  
36  
37  
38 21. Schulte, KM, Beyer A, Köhrer K, Oberhäuser S, Röher HD.  
39  
40 Lysophosphatidic acid, a novel lipid growth factor for human thyroid cells:  
41  
42 over-expression of the high-affinity receptor edg4 in differentiated thyroid  
43  
44 cancer. Int J Cancer 2001; 92: 249-56.  
45  
46  
47  
48  
49  
50 22. Kitayama J, Shida D, Sako A, *et al.* Over-expression of lysophosphatidic  
51  
52 acid receptor-2 in human invasive ductal carcinoma. Breast Cancer Res  
53  
54 2004; 6: R640-R646.  
55  
56  
57  
58  
59  
60

- 1  
2  
3  
4  
5  
6  
7 23. Mills GB, Eder A, Fang X, *et al.* Critical role of lysophospholipids in the  
8  
9  
10 pathophysiology, diagnosis, and management of ovarian cancer. *Cancer*  
11  
12  
13 *Treat Res* 2002; 107: 259-83.  
14
- 15  
16 24. Shida D, Kitayama J, Yamaguchi H, *et al.* Dual mode regulation of migration  
17  
18  
19 by lysophosphatidic acid in human gastric cancer cells. *Exp Cell Res* 2004;  
20  
21  
22 301: 168-78.  
23
- 24  
25 25. Guo R, Kasbohm EA, Arora P, *et al.* Expression and function of  
26  
27  
28 lysophosphatidic acid LPA1 receptor in prostate cancer cells. *Endocrinology*  
29  
30  
31 2006; 147: 4883-92.  
32  
33
- 34 26. Boucharaba A, Serre CM, Guglielmi J, Bordet JC, Clezardin P, Peyruchaud  
35  
36  
37 O. The type 1 lysophosphatidic acid receptor is a target for therapy in bone  
38  
39  
40 metastases. *Proc Natl Acad Sci U S A* 2006; 103: 9643-8.  
41  
42
- 43 27. Goetzl EJ, Dolezalova H, Kong Y, *et al.* Distinctive expression and functions  
44  
45  
46 of the type 4 endothelial differentiation gene-encoded G protein-coupled  
47  
48  
49 receptor for lysophosphatidic acid in ovarian cancer. *Cancer Res* 1999; 59:  
50  
51  
52 5370-5.  
53  
54  
55  
56  
57  
58  
59  
60

- 1  
2  
3  
4  
5  
6  
7 28. Shida D, Kitayama J, Yamaguchi H, *et al.* Lysophosphatidic Acid (LPA)  
8  
9 Enhances the Metastatic Potential of Human Colon Carcinoma DLD1 Cells  
10  
11 through LPA1. *Cancer Res* 2003; 63: 1706-11.  
12  
13  
14  
15  
16 29. Yamada T, Sato K, Komachi M, *et al.* Lysophosphatidic acid (LPA) in  
17  
18 malignant ascites stimulates motility of human pancreatic cancer cells  
19  
20 through LPA1. *J Biol Chem* 2004; 279: 6595-605.  
21  
22  
23  
24  
25 30. Yokoyama A, Kohno N, Fujino S, *et al.* Origin of heterogeneity of  
26  
27 interleukin-6 (IL-6) levels in malignant pleural effusions. *Oncol Rep* 1994; 1:  
28  
29 507-511.  
30  
31  
32  
33  
34 31. Nakataki E, Yano S, Matsumori Y, *et al.* Novel orthotopic implantation model  
35  
36 of human malignant pleural mesothelioma (EHMES-10 cells) highly  
37  
38 expressing vascular endothelial growth factor and its receptor. *Cancer Sci*  
39  
40 2006; 97: 183-91.  
41  
42  
43  
44  
45  
46  
47 32. Usami N, Fukui T, Kondo M, *et al.* Establishment and characterization of  
48  
49 four malignant pleural mesothelioma cell lines from Japanese patients.  
50  
51  
52  
53  
54  
55  
56 33. Yano S, Muguruma H, Matsumori Y, *et al.* Antitumor Vascular Strategy for  
57  
58 Controlling Experimental Metastatic Spread of Human Small-Cell Lung  
59  
60

1  
2  
3  
4  
5  
6  
7 Cancer Cells with ZD6474 in Natural Killer Cell–Depleted Severe Combined  
8  
9  
10 Immunodeficient Mice. *Clin Cancer Res* 2005; 11: 8789-98.

11  
12  
13 34. Ohta H, Sato K, Murata N, *et al.* Ki16425, a subtype-selective antagonist for  
14  
15  
16 EDG-family lysophosphatidic acid receptors. *Mol Pharmacol* 2003; 64:  
17  
18  
19 994-1005.

20  
21  
22 35. Lindholm PM, Salmenkivi K, Vauhkonen H, *et al.* Gene copy number  
23  
24  
25 analysis in malignant pleural mesothelioma using oligonucleotide array CGH.  
26  
27  
28 *Cytogenet Genome Res* 2007; 119: 46-52.

29  
30  
31 36. Harvey I. Pass, Zhandong Liu, Anil Wali, *et al.* Gene Expression Profiles  
32  
33  
34 Predict Survival and Progression of Pleural Mesothelioma. *Clin Cancer Res*  
35  
36  
37 2004; 10: 849-859.

38  
39  
40 37. Mills GB, Moolenaar WH. The emerging role of lysophosphatidic acid in  
41  
42  
43 cancer. *Nat Rev Cancer* 2003; 3: 582-91.

44  
45  
46 38. Stähle M, Veit C, Bachfischer U, *et al.* Mechanisms in LPA-induced tumor  
47  
48  
49 cell migration: critical role of phosphorylated ERK. *J Cell Sci.* 2003; 116:  
50  
51  
52 3835-46.

- 1  
2  
3  
4  
5  
6  
7 39. Hama K, Aoki J, Fukaya M, *et al.* Lysophosphatidic acid and autotaxin  
8  
9  
10 stimulate cell motility of neoplastic and non-neoplastic cells through LPA1. J  
11  
12 Biol Chem 2004; 279: 17634-9.  
13  
14  
15  
16 40. Do TV, Symowicz JC, Berman DM, *et al.* Lysophosphatidic Acid  
17  
18 Down-Regulates Stress Fibers and Up-Regulates Pro-Matrix  
19  
20 Metalloproteinase-2 Activation in Ovarian Cancer Cells. Mol Cancer Res  
21  
22 2007; 5: 121-31.  
23  
24  
25  
26  
27  
28 41. Michiels F, Habets GG, Stam JC, van der Kammen RA, Collard JG. A role  
29  
30 for Rac in Tiam1-induced membrane ruffling and invasion. Nature 1995;  
31  
32 375: 338-40.  
33  
34  
35  
36  
37  
38 42. Itoh K, Yoshioka K, Akedo H, Uehata M, Ishizaki T, Narumiya S. An  
39  
40 essential part for Rho-associated kinase in the transcellular invasion of  
41  
42 tumor cells. Nat Med 1999; 5: 221-5.  
43  
44  
45  
46  
47  
48  
49  
50  
51  
52  
53  
54  
55  
56  
57  
58  
59  
60

## Figure legends

**Figure 1. Expression of LPA receptors, LPA<sub>1</sub>, LPA<sub>2</sub>, LPA<sub>3</sub>, LPA<sub>4</sub>, and LPA<sub>5</sub> in human MPM cell lines, and clinical specimens.**

Reverse transcription-PCR was performed to determine expression of the LPA receptors, LPA<sub>1</sub>, LPA<sub>2</sub>, LPA<sub>3</sub>, LPA<sub>4</sub>, and LPA<sub>5</sub>. Reverse transcription-PCR products were electrophoresed on a 2% agarose gel and stained with ethidium bromide. Data shown are representative of three independent experiments with similar results.

**Figure 2. Effects of LPA on cell proliferation of human MPM cells, and inhibition by antagonist and knockdown of LPA<sub>1</sub>.**

Tumor cells ( $5 \times 10^3$  per well) plated in triplicate in 96-well plates were incubated overnight in RPMI 1640 containing 10% FBS. The cells were starved for 24 h by replacing the media with serum-free RPMI 1640 containing 0.1% fatty acid-free bovine serum albumin. Different doses of LPA and Ki16425, an inhibitor of LPA<sub>1</sub>, were then added, and the cells were cultured for 48 h. Then, an aliquot of 50  $\mu$ L of stock 3-(4,5-dimethylthiazol-2-yl)-2,5-diphenyltetrazolium bromide solution (2 mg/mL; Sigma, St. Louis, MO) was added to each plate and the cells were

1  
2  
3  
4  
5  
6  
7 incubated for 2 h at 37°C. LPA stimulated proliferation of 211H and H28 cells in  
8  
9  
10 a dose-dependent manner (A). LPA-induced proliferation of 211H and H28 cells  
11  
12  
13 was inhibited by Ki16425 in a dose-dependent manner (B). After transfection  
14  
15  
16 with siRNA or scramble RNA (siSCR) using Lipofectamine 2000 in accordance  
17  
18  
19 with the manufacturer's instructions, the cells were starved for 24 h by replacing  
20  
21  
22 the media with serum-free RPMI 1640 containing 0.1% fatty acid-free BSA. LPA  
23  
24  
25 (10  $\mu$ M) was then added and cells were cultured for 48 h. The cells were then  
26  
27  
28 subjected to 3-(4,5-dimethylthiazol-2-yl)-2,5-diphenyltetrazolium bromide assay.  
29  
30  
31 Knockdown of LPA<sub>1</sub> (siLPA1#1, siLPA1#2, and siLPA1#3) significantly inhibited  
32  
33  
34 LPA-induced proliferation of 211H and H28 cells, while knockdown of LPA<sub>2</sub>  
35  
36  
37 (siLPA2#1, siLPA2#2, and siLPA2#3) had little impact on LPA-induced  
38  
39  
40 proliferation of 211H or H28 cells (C). Data shown are representative of three  
41  
42  
43 independent experiments with similar results. \* Significantly different from  
44  
45  
46 control ( $P<0.001$ ). \*\* Significantly different from siSCR ( $P<0.005$ ).  
47  
48  
49  
50  
51  
52

53 **Figure 3. Effects of LPA on phospho-p44/42 MAPK, and inhibition by**  
54  
55  
56 **knockdown of LPA<sub>1</sub>.**  
57

58  
59 Tumor cells were incubated with LPA (10  $\mu$ M) for 0, 2, and 6 h. Then, the cell  
60



1  
2  
3  
4  
5  
6  
7 lysates were harvested and the protein level and phosphorylation of p44/42  
8  
9  
10 MAPK were determined by immunoblotting analysis. LPA-induced  
11  
12 phosphorylation in 211H and H28 cells occurred after 2 h, and the effect was  
13  
14 still substantial after 6 h (A). Moreover, knockdown of LPA<sub>1</sub> with siRNA  
15  
16 markedly reduced the activation of p44/42 MAPK. However, knockdown of LPA<sub>2</sub>  
17  
18 had little impact (B). Data shown are representative of three independent  
19  
20 experiments with similar results.  
21  
22  
23  
24  
25  
26  
27  
28  
29  
30

31 **Figure 4. Effects of LPA on migration of human MPM cells, and inhibition**  
32 **by knockdown of LPA<sub>2</sub>.**  
33  
34  
35

36  
37 Cell migration was measured in Falcon Cell Culture Inserts (pore size 8  $\mu$ m).  
38  
39 Cells suspended in serum-free RPMI 1640 containing 0.1% fatty acid-free BSA  
40  
41 with or without LPA and/or Ki16425 were added to the upper chamber ( $1 \times 10^5$   
42  
43 cells at 100  $\mu$ l/well). Serum-free RPMI 1640 containing 0.1% fatty acid-free BSA  
44  
45 and human fibronectin (5  $\mu$ g/ml) as a chemoattractant was added to the lower  
46  
47 chamber. When the cells treated with Ki16425, the cells were preincubated with  
48  
49 10  $\mu$ M Ki16425 for 30 min. The cells were allowed to migrate for 3 h at 37°C.  
50  
51  
52  
53  
54  
55  
56  
57  
58  
59  
60 LPA stimulated migration of MPM cells, H2052, H2373, and ACC-MESO-4 in a

1  
2  
3  
4  
5  
6  
7 dose-dependent manner (A). Ki16425 had no effect on LPA-induced motility in  
8  
9  
10 these MPM cells (B). After transfection with siRNA or scramble RNA (siSCR),  
11  
12  
13 the cells were starved for 24 h by replacing the media with serum-free RPMI  
14  
15  
16 1640 containing 0.1% fatty acid-free BSA. Knockdown of LPA<sub>2</sub> by siRNA  
17  
18  
19 significantly inhibited the LPA-induced motility of H2052 cells, while knockdown  
20  
21  
22 of LPA<sub>1</sub> did not (C). Data shown are representative of three independent  
23  
24  
25 experiments. \* Significantly different from control ( $P<0.005$ ). \*\* Significantly  
26  
27  
28 different from siSCR ( $P<0.005$ ).  
29  
30  
31  
32  
33

34 **Figure 5. Effects of LPA on RhoA activity, and inhibition by knockdown of**  
35  
36  
37 **LPA<sub>2</sub>.**

38  
39  
40 To assess RhoA activation, we determined RhoA activation as the amount of  
41  
42  
43 RhoA-GTP binding using a G-LISA RhoA<sup>TM</sup> Activation Assay Biochem Kit<sup>TM</sup>  
44  
45  
46 (Cytoskeleton, Denver, CO) in accordance with the manufacturer's  
47  
48  
49 recommendations. H2052 cells were treated with LPA (10  $\mu$ M) for 0, 1, 3, 6, 12,  
50  
51  
52 and 30 min, and the cell lysates were then prepared for the assay. LPA  
53  
54  
55 stimulation of RhoA activity in H2052 cell was highest after 1 min and the effect  
56  
57  
58 decreased within 30 min (A). Knockdown of LPA<sub>2</sub> with siRNA significantly  
59  
60

1  
2  
3  
4  
5  
6  
7 reduced the activation of RhoA, while knockdown of LPA<sub>1</sub> had little effect (B).  
8  
9

10 Data shown are representative of three independent experiments. \* Significantly  
11  
12 different from control ( $P<0.05$ ). \*\* Significantly different from siSCR ( $P<0.005$ ).  
13  
14  
15  
16  
17  
18  
19  
20  
21  
22  
23  
24  
25  
26  
27  
28  
29  
30  
31  
32  
33  
34  
35  
36  
37  
38  
39  
40  
41  
42  
43  
44  
45  
46  
47  
48  
49  
50  
51  
52  
53  
54  
55  
56  
57  
58  
59  
60

For Review

Figure 1.

Tadaaki Yamada et.al

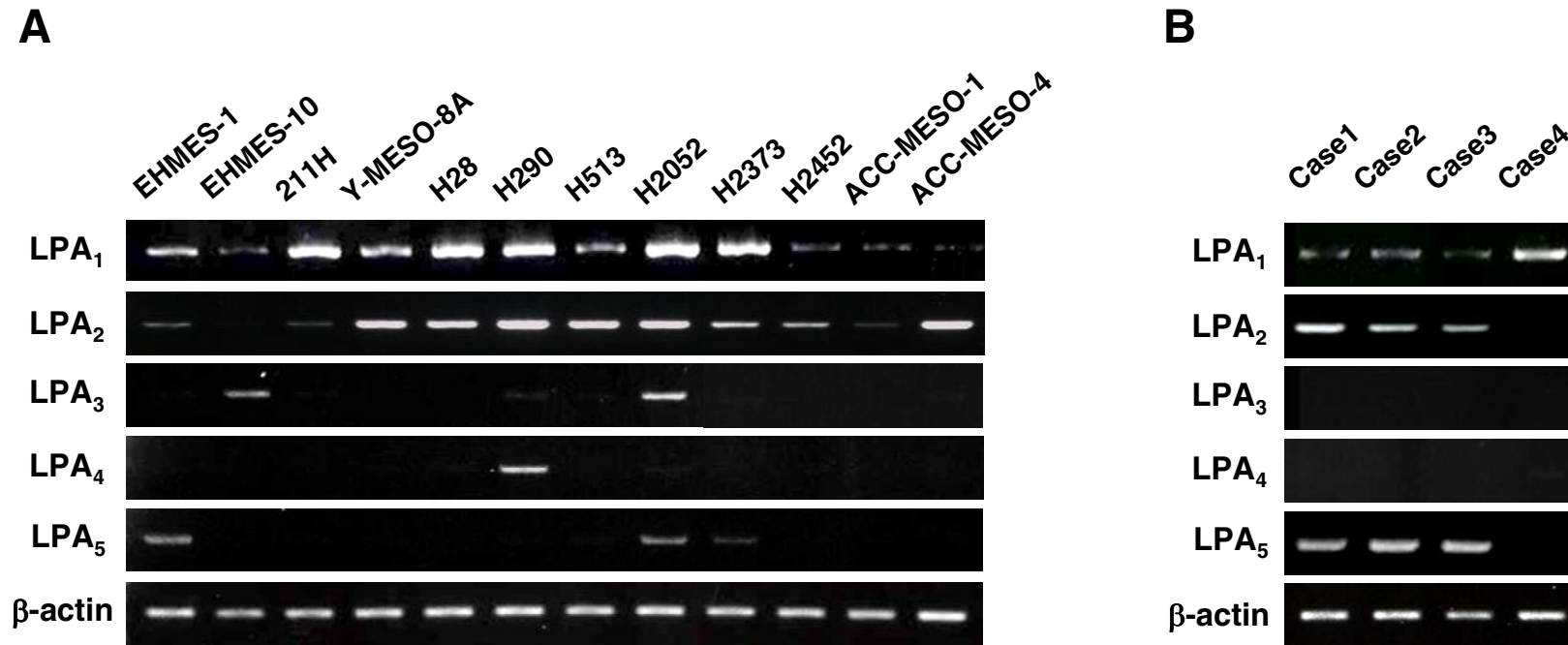
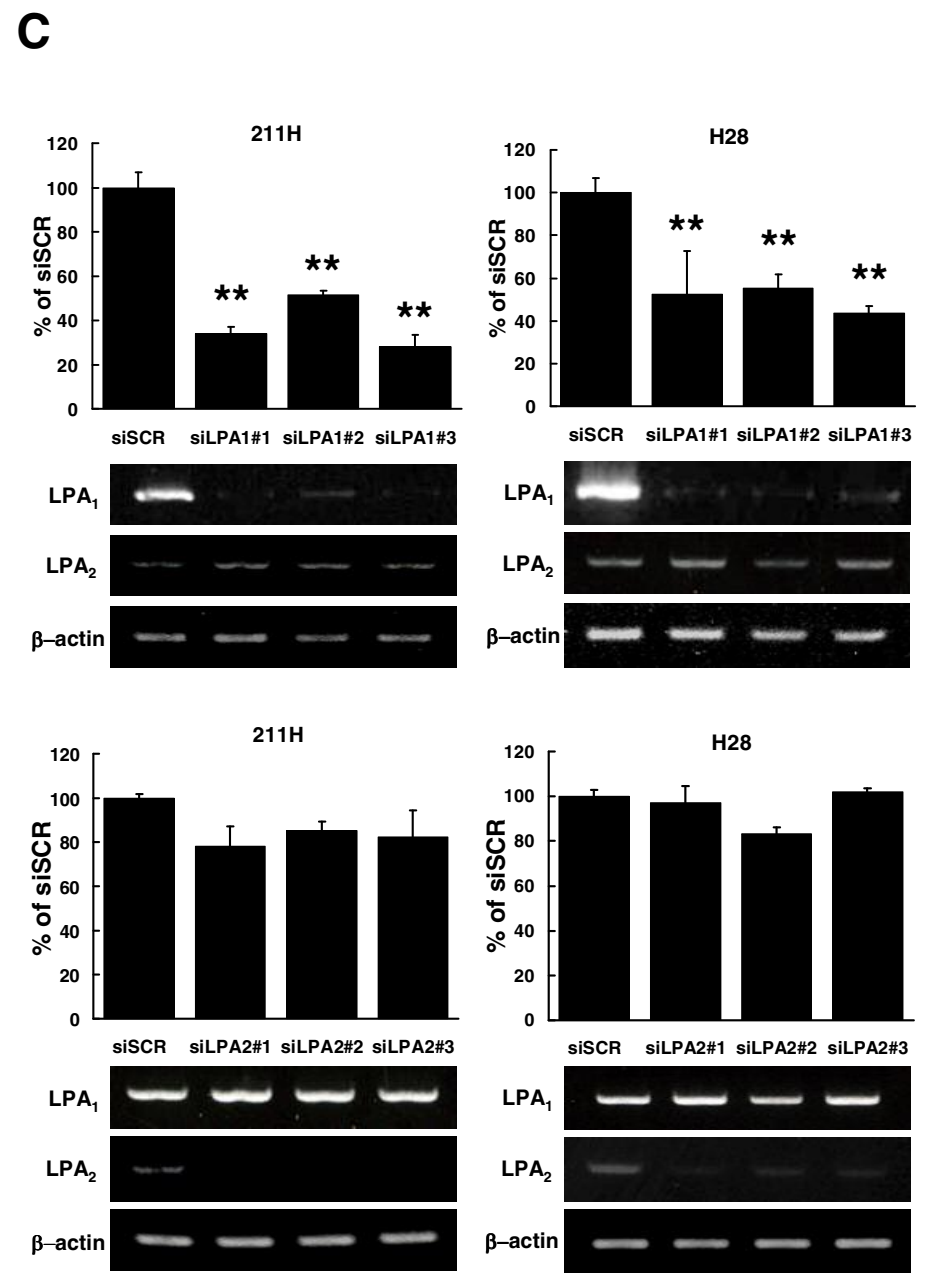
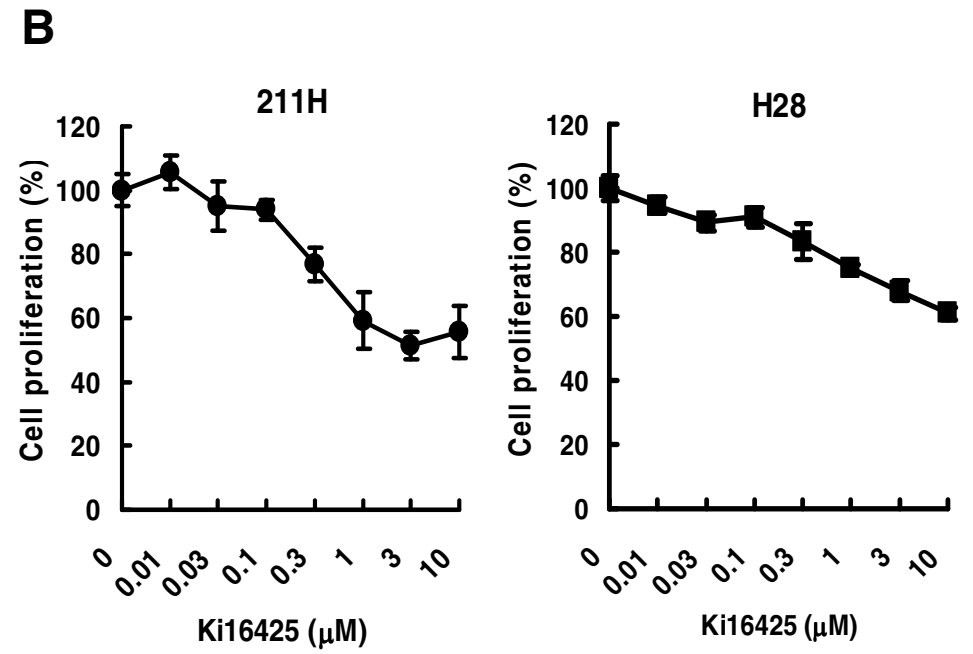
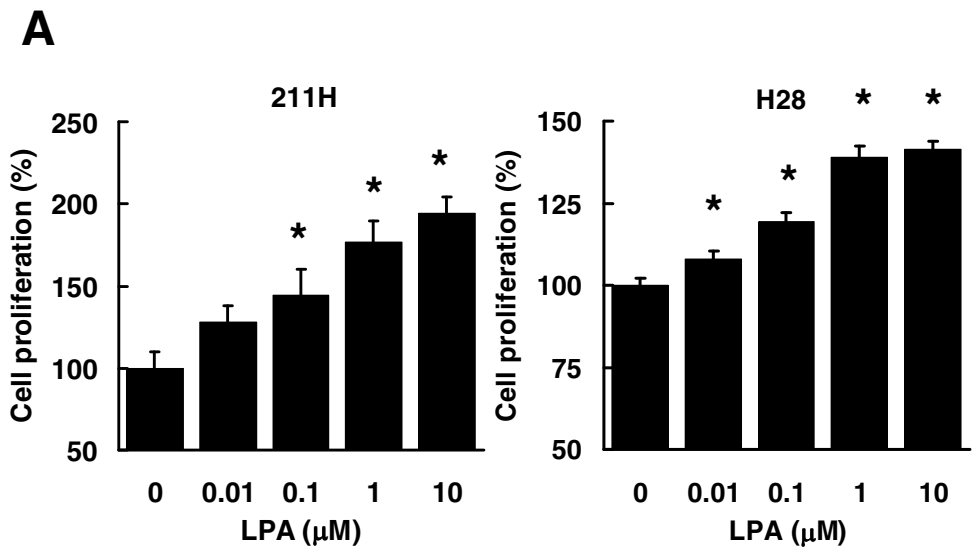
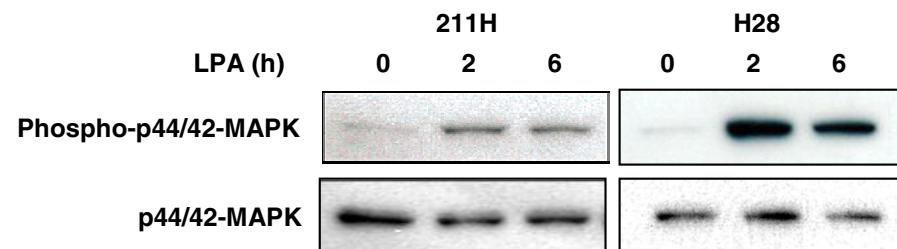
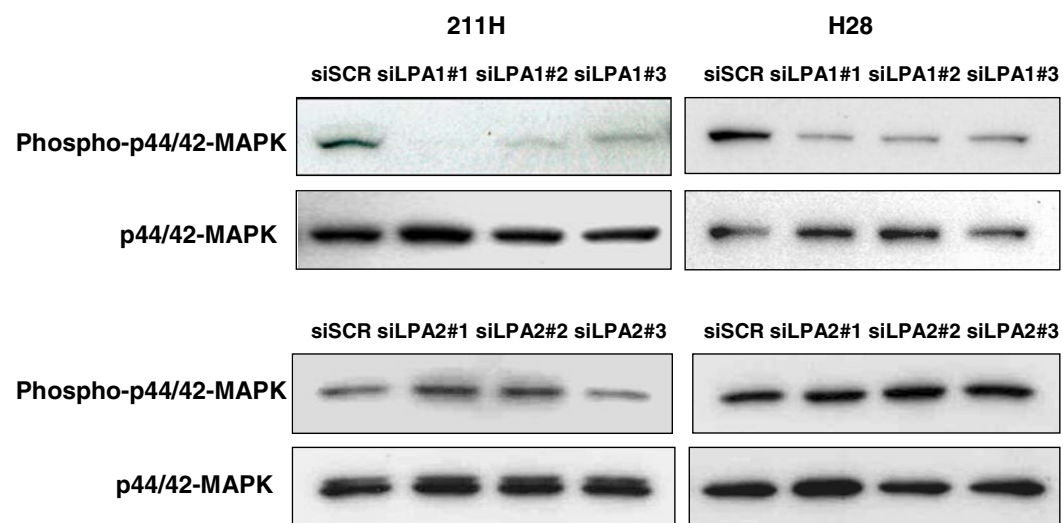


Figure 2.



**Figure 3.**

Tadaaki Yamada et.al

**A****B**

### Figure 4.

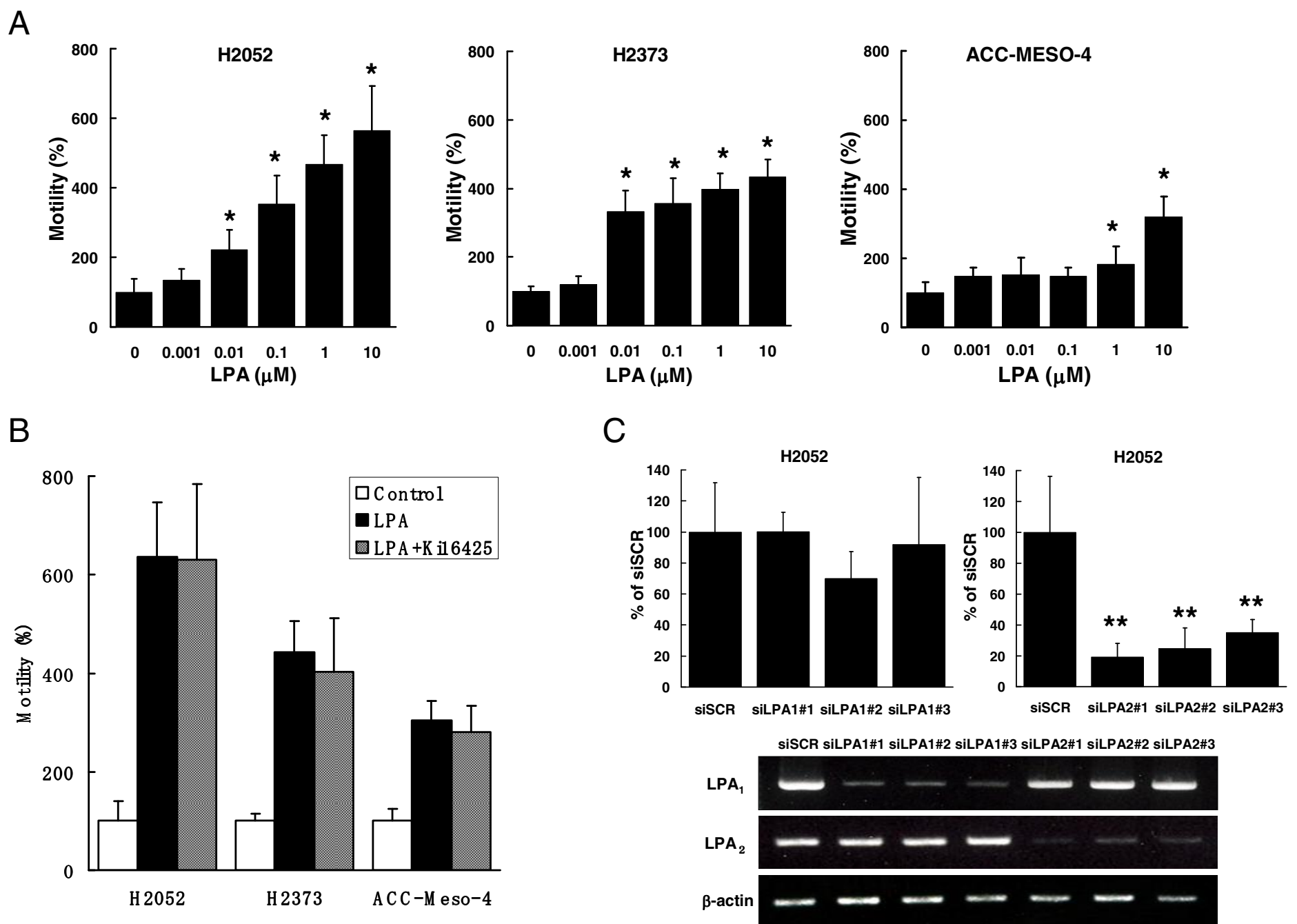
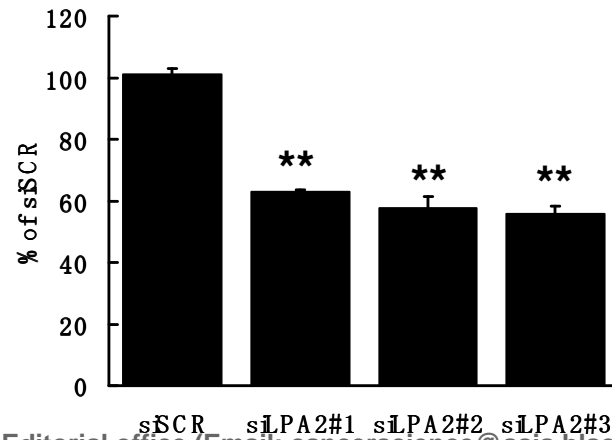
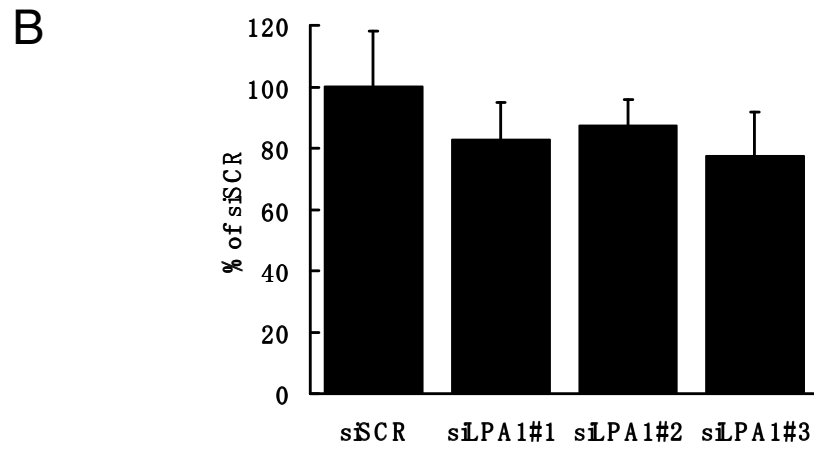
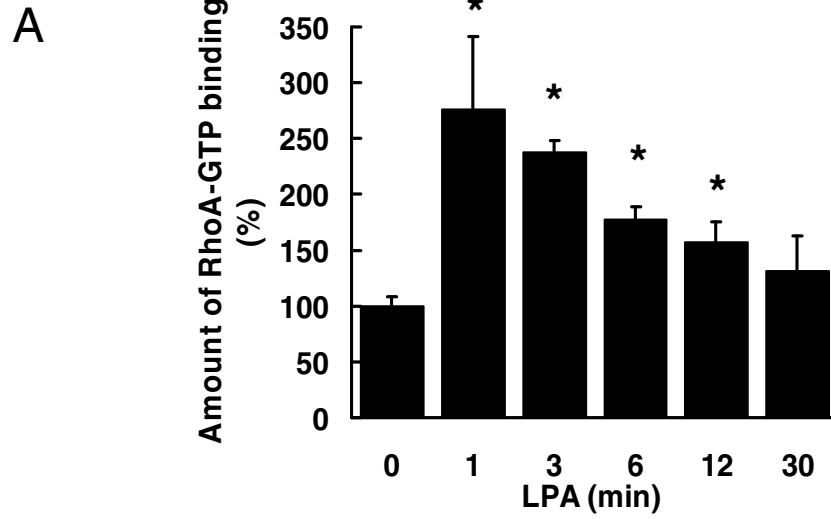


Figure 5.

Tadaaki Yamada et.al



1  
2  
3  
4  
5  
6  
7  
8  
9  
10  
11  
12  
13  
14  
15  
16  
17  
18  
19  
20  
21  
22  
23  
24  
25  
26  
27  
28  
29  
30  
31  
32  
33  
34  
35  
36  
37  
38  
39  
40  
41  
42  
43  
44  
45  
46  
47  
48  
49