

Interleukin-6 and related proteins as biomarkers in systemic sclerosis

Christopher P. Denton, Voon H. Ong

Centre for Rheumatology, Division of Medicine, Royal Free Campus, University College London, London - UK

ABSTRACT

The search for biomarkers in systemic sclerosis (SSc) is driven by a goal to stratify patients, identify potential subgroups for treatment, and help assess response to therapy. Emerging evidence indicates that interleukin-6 (IL-6) and some family members are key biomarkers involved in SSc pathogenesis and therefore suitable targets for therapy. Recent studies evaluating IL-6 and its canonical Janus kinase/signal transducers and activators of transcription downstream pathways in modulating fibrotic response and immune cell function suggest a pivotal role for IL-6 in SSc pathogenesis. Although the significance and effect of local tissue expression of IL-6 and its family members are less well established, high levels of circulating IL-6 may identify subgroups of patients with early-stage disease, particularly those at risk for progressive lung fibrosis. In addition, higher disease activity may portend poor prognostic outcome in terms of survival and skin disease. Longitudinal assessment of serum levels of IL-6 and its signaling associates may prove valuable in monitoring response to treatment. As an IL-6–dependent surrogate marker, C-reactive protein may assist cohort enrichment if targeted treatment for IL-6 demonstrates efficacy, especially in subgroups with high IL-6 levels. Although IL-6 appears to be a key factor in the hierarchy of the complex network of disease-associated molecules, the systemic or autocrine/paracrine manner in which IL-6 asserts its profibrotic effects—particularly its interaction with other key pathogenic factors in SSc—is unknown. Ongoing clinical trials will help to delineate the mechanisms of IL-6 in SSc pathogenesis and inform on the role of these biomarkers.

Keywords: Biomarkers, Interleukin-6, Scleroderma systemic

Biomarkers and systemic sclerosis

There are substantial advantages to having measurable objective factors that reflect the severity or activity of a disease and modification by treatment. This led to the definition of *biomarker*. In 2016, the National Institutes of Health Biomarkers Definitions Working Group defined a biomarker as “a defined characteristic that is measured as an indicator of normal biological processes, pathogenic processes, or responses to an exposure or intervention, including therapeutic interventions” (1). Biomarkers are not necessarily single entities that can be measured in biological samples; they might also be imaging data or other measurable factors, such as biomechanical properties (1). In addition, a

marker might be a composite of several factors combined mathematically. However, for the purposes of this review, the focus is on measurement of expression or levels of interleukin-6 (IL-6) and related proteins or factors that are directly controlled by IL-6, such as the acute phase reactant C-reactive protein (CRP). It is important to consider that a measurable factor may also be a surrogate marker, defined as “a laboratory measurement or physical sign that is used in therapeutic trials as a substitute for a clinically meaningful end point that is a direct measure of how a patient feels, functions, or survives and is expected to predict the effect of the therapy” (1).

The need is great for biomarkers in systemic sclerosis (SSc) to help stratify patients, identify potential subgroups for treatment, and assess response to therapy. This is because SSc is a multisystem disease with variable clinical severity and outcome. Therefore, measures that can reflect this are of substantial potential value for the assessment and evaluation of patients. At present, objective measures of organ function (such as pulmonary function tests) and of renal function and clinical tools (such as modified Rodnan skin score) are available (2), but laboratory measures could be used to assess disease and determine the impact of treatment. It is also possible that such markers might be pathogenic mediators and targets for therapy. In this article, the extent to which this is true for IL-6 will be reviewed.

Accepted: October 10, 2017

Published online: November 17, 2017

Corresponding author:

Christopher P. Denton
Centre for Rheumatology, Division of Medicine
Royal Free Campus
University College London
Rowland Hill Street
NW3 2PF London, UK
c.denton@uc.ac.uk

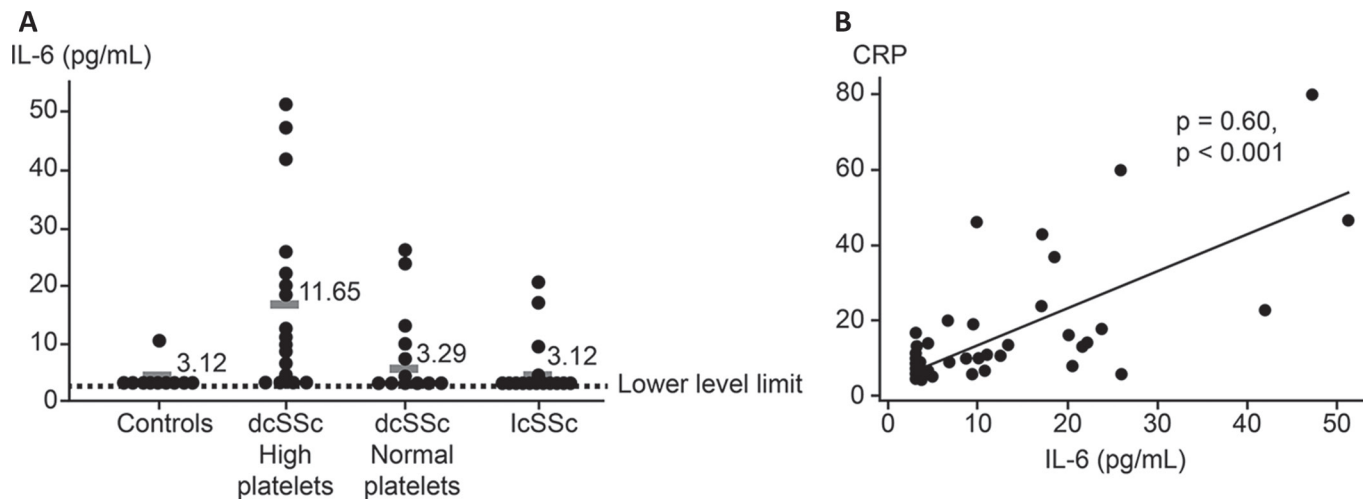


Fig. 1 - Serum IL-6 levels in patients with SSc and in healthy controls. **(A)** Serum IL-6 levels in patients with SSc are increased compared with levels in healthy controls. Serum samples were obtained from patients with dcSSc (n=39; 20 with thrombocytosis), lcSSc (n=29), and healthy controls (n=15). For each subgroup, the median values are shown adjacent to the horizontal grey bars. **(B)** Serum IL-6 levels were correlated with CRP in patients with SSc (n=68). CRP = C-reactive protein; dcSSc = diffuse cutaneous SSc; IL-6 = interleukin-6; lcSSc = limited cutaneous SSc; SSc = systemic sclerosis. Adapted by permission from BMJ Publishing Group Limited. *Annals of the Rheumatic Diseases*, Khan K, Xu S, Nihtyanova S, et al., Vol. 71, Pages 1235-1242, Copyright 2012.

Studies of circulating CRP and IL-6 in SSc

Although SSc is a prototypic fibrotic disease with systemic vasculopathy, it has been recognized that markers of inflammation are important prognostic indicators. Thus, erythrocyte sedimentation rate (ESR) has been shown to correlate with poor survival and to be a predictor of poor outcome (3, 4). Analogously, it is expected that CRP also predicts outcome, and appreciation that CRP is generally a reflection of IL-6 levels adds further weight to this potential link. This association was shown more recently and robustly by a study from the Canadian Scleroderma Research Group (5). In this study of more than 1000 patients, CRP levels were elevated in approximately one-quarter of patients. This correlated, as expected, with ESR but was also more likely to be elevated in patients with early-stage disease or with higher skin score, worse lung function, and greater disease activity and severity. These findings are in line with the effects of IL-6 levels on SSc reported by Hasegawa et al (6), who showed in 1998 that IL-6 levels correlated with CRP and ESR and that levels were especially elevated in early diffuse SSc and were associated with lung fibrosis. This study built on earlier studies in 1992 (7) that reported increased serum levels of IL-2, IL-4, and IL-6 in SSc but lacked detailed investigation. Hasegawa et al (8) went on to show that there was enhanced production of IL-6 by peripheral blood mononuclear cells (PBMCs) in SSc, suggesting that these cells may be an important source of IL-6 in the circulation. Recent studies have further defined differential IL-6 expression by PBMCs, in particular B-cell subsets, in SSc (9). In contrast to later studies, Hasegawa et al (8) reported that there was an apparent difference in soluble IL-6 receptor (sIL-6R) in SSc but no difference for gp130. The link between CRP and IL-6 levels was shown more robustly in studies that used the better high-sensitivity CRP assays. In a comprehensive study of IL-6, CRP, and sIL-6R levels in a cohort of patients with SSc

by Khan et al in 2012 (10), there was clear confirmation of the association between IL-6 and CRP and between IL-6 and elevated platelet counts (Fig. 1). This study (10) also demonstrated increased tissue expression of IL-6 in relevant sites that strengthened the possible pathogenic role of IL-6 and built on previous *in vitro* studies (11) that had suggested overproduction of IL-6 by SSc fibroblasts. Therefore, it is clear that acute phase markers, driven at least in part by IL-6, are important prognostic markers in SSc. The availability of these surrogates for IL-6 levels that are routinely clinically available has helped to enrich cohorts in trials and may ultimately be valuable in disease management if targeted treatment for IL-6 becomes available and is more effective in subgroups of patients with higher IL-6 levels.

Circulating and tissue IL-6 and organ-based disease in SSc

Although the studies described are of interest in SSc, it is more relevant to outcomes if IL-6 and related serum proteins are reflective of organ-based complications. One of the first reports highlighted possible association between elevated IL-6 levels and lung fibrosis in a cross-sectional study of patients with SSc (12). Interestingly, those investigators also found elevated levels of other cytokines and explored their expression from activated PBMCs and T cells. Building on this was the study by Beirne et al (13) that used a novel multiplex approach to determine patterns of elevated cytokine and chemokine levels associated with lung fibrosis in patients with SSc. These patients were compared with other cohorts of patients, and it was notable that although no individual cytokine was predictive in this analysis, there was a trend for IL-6 and monocyte chemoattractant protein-1 (13). This trend was later explored in a larger validation cohort because a threshold level of IL-6 was associated with significant lung fibrosis, and the results of this landmark

study defined the association between elevated IL-6 levels in initial samples and the development of lung fibrosis and disease progression (14). Patients with relatively preserved lung function, represented by forced vital capacity (FVC) more than 70% predicted, experienced higher mortality rates and greater risk for disease progression if they also had higher IL-6 levels. In contrast, in patients likely to have more advanced lung fibrosis, reflected by FVC less than 70% predicted, there was no predictive value of serum IL-6. These results are interesting because they suggest that IL-6 in serum may be more relevant in milder or earlier stage lung disease and also because FVC 70% has emerged as a predictive threshold for more severe disease that may require treatment with immunosuppressants (15). This observation is notable because emerging evidence from clinical trials suggests that IL-6R blockade may reduce the risk for significant worsening of lung function over 24 or 48 weeks of treatment. In line with this result is the observation by Liu et al (16) that CRP levels are associated with long-term progression and survival in SSc-associated lung fibrosis. In this study, not only were CRP levels higher in 266 patients with SSc compared with 97 controls (the GENISOS cohort), but CRP levels were associated with the absence of antinuclear antibodies and correlated with the concomitant severity of lung, skin, and joint involvement. Higher CRP levels were associated with shorter survival ($p < 0.001$) and predicted the long-term decline in FVC independent of potential confounders (age at baseline, sex, ethnicity, disease type, current smoking, body mass index, topoisomerase status, and treatment with immunosuppressive agents) in a multivariable model ($p = 0.006$).

A broader analysis of the relationship between serum IL-6 and organ-based disease in SSc showed a link with measures of cardiorespiratory severity, including exercise capacity, pulmonary arterial estimated pressure, and lung fibrosis score (17). This is in line with earlier reports that IL-6 was associated with cardiac complications (18), albeit in a relatively small study of 31 patients with SSc and matched controls. Correlation with left ventricular function and N-terminal probrain natriuretic peptide was notable, though there was no correlation with echocardiographic measures of pulmonary or right ventricular function. These patients were not selected for pulmonary hypertension, so this may not be surprising. Similarly, the emerging interest in IL-6 in pulmonary arterial hypertension (PAH) is supported by early studies supportive of increased circulating levels (19, 20), and IL-6R blockade has been explored in a clinical trial for SSc-associated PAH (ClinicalTrials.gov, NCT02676947). The link between serum IL-6 and gastrointestinal (GI) disease is less clear because cases have been reported in which IL-6R antagonists may worsen GI disease (21). However, this connection seems unlikely based on much larger prospective trials that have not identified worsening of GI complications (22).

Taken together, the data do support a role for IL-6 in marking and possibly mediating organ-based complications in SSc. This is interesting given that hierarchical clustering and network analysis of dermal interstitial fluid identified a subset of patients with early-stage diffuse SSc with an innate inflammatory IL-6-associated profile (23).

IL-6 in the skin in scleroderma – morphea and related disorders

Studies of localized scleroderma (morphea) provide some of the best evidence that serum IL-6 levels may be reflective of local skin disease. Results are conflicting, however, with some studies reporting no evidence of elevated levels of IL-6 in morphea (24) and other, much earlier, studies reporting evidence of elevated IL-6 levels (25), suggesting that the stage and extent of morphea are most likely to be relevant. The most recent study (26) used modern multiplex analysis to examine 63 cytokines or growth factors in a cohort of patients with morphea and had positive results; therefore, it does seem possible that IL-6 is a marker of and a mediator in morphea. In that study, 63 cytokines, chemokines, and growth factors were measured in the sera of four patients with idiopathic morphea and of one patient with vitamin K1-induced morphea using a multiplex assay to identify the role of inflammatory/immunologic events in their pathogenesis. Full-thickness skin biopsy samples of affected skin were analysed by histopathology. Serum levels of IL-2, IL-4, IL-6, and interferon- β were markedly increased in the sera of patients with idiopathic morphea. However, the number of patients in this study is probably too small to draw strong conclusions.

IL-6 may be present and produced locally in SSc, as supported by analysis of dermal interstitial fluid and immunohistochemical evidence of local expression in affected skin, renal tissue, and pulmonary tissue (Fig. 2). In addition, some studies confirm a link with dermal interstitial fluid. Khan et al (10) showed that IL-6 levels may reflect long-term outcomes in skin and that elevated IL-6 levels could be a surrogate marker for clinical outcome for the subgroup of non-improving patients who have the worst skin trajectory, as identified in 2007 by Shand et al (27).

IL-6 changes in SSc interventional trials

Although the cross-sectional studies described have shed some light on the value of IL-6 and CRP in the assessment of SSc and localized scleroderma, there are many more informative and compelling data from longitudinal sampling in interventional trials. These trials have the value of sampling over time and may link the clinical changes in skin and internal organs with changes in soluble IL-6 and CRP levels. One of the most promising studies is the faSScinate clinical trial, which used IL-6 targeting for the treatment arm with a neutralizing antibody against IL-6R. Interestingly, although the cohort-enrichment strategies for this study recruited a group of patients with high baseline IL-6 levels, there was an initial increase in IL-6 levels that reduced with repeated dosing (22). Other studies show changes in IL-6 levels, such as with rituximab (RTX) treatment. Thus, in a series of 10 patients reported by Giuggioli et al (28), IL-6 levels were reduced after treatment in three of those patients with diffuse cutaneous SSc who had increased IL-6 at baseline. Consistent with those findings, Bosello et al (29) reported nine patients with SSc who had reduced levels of IL-6 in serum that were associated with reduction in skin score and severity index after treatment with RTX (29). A clinical trial of ultraviolet A1 phototherapy in 14 patients with morphea showed

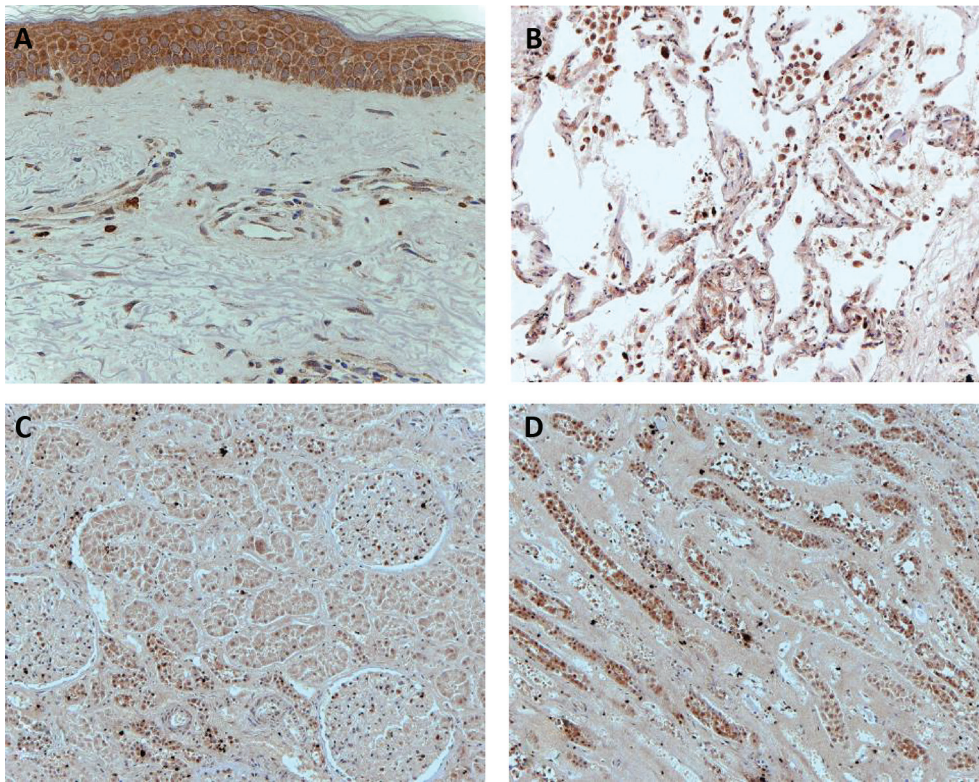


Fig. 2 - IL-6 expression in SSc skin and internal organs. IL-6 is detected in the skin: in fibroblastic cells in the dermis, in the epidermis, and in perivascular cells (A). IL-6 expression is shown in the lung of a patient who developed PAH (B). IL-6 expression in glomeruli and renal tubules (C) and in SSc tissue from a post-mortem specimen (D). IL-6 = interleukin-6; PAH = pulmonary arterial hypertension; SSc = systemic sclerosis. Images courtesy of Khan K, Centre for Rheumatology and Connective Tissue Diseases, University College London, London, UK.

a reduction in mRNA for IL-6 and other inflammatory or profibrotic cytokines (30). Reports of other clinical trials that did not specifically target IL-6 also indicate changes associated with improved skin scores. This was not seen in a study of imatinib, which instead showed no evidence of benefit for this treatment and evidence of substantial toxicity (31). In a trial of hyperimmune caprine serum, skin scores did improve and IL-6 was among the serum cytokines whose levels decreased during therapy, thereby indicating it as a possible marker of skin change (32).

Links between IL-6 as a biomarker and its role in pathogenesis

The studies discussed here all point toward elevated IL-6 expression and activity in the skin or sera of patients with SSc, providing a plausible mechanistic link to pathogenesis given that IL-6 has been shown to be profibrotic and to modulate immune cell function in ways that are relevant to SSc pathogenesis. It is well established that the IL-6 trans-signaling pathway is pivotal in stromal cells, such as fibroblasts, which do not express membrane IL-6R, unlike some immune cells, such as macrophages and CD4 T cells, which are able to directly respond to IL-6. Activation of the key IL-6 downstream signaling Janus kinase/signal transducers and activators of transcription pathway in lesional tissue lends further support to the role of IL-6 in disease pathogenesis (10). Similar to profibrotic fibroblasts, these immune cells, which are important candidates in the development of SSc, can produce IL-6, raising the possibility that as well as being used as a marker or even a surrogate in SSc trials, IL-6 is a logical pathogenic mediator and a target for therapy. Although IL-6 appears to be a

key factor in the hierarchy of a complex network of disease-associated molecules, the systemic or autocrine/paracrine way in which IL-6 asserts its effects, particularly the activation of dermal fibroblasts, is unknown, and the mechanism of the role of IL-6 should be better defined and will likely be informed by recently completed and ongoing clinical trials.

IL-6 in context; other members of the IL-6 family in SSc and their potential as markers and mediators

Among the 10 known members of the IL-6 family of cytokines, several have been reported to have altered expression levels in patients with SSc. Thus, in addition to the altered expression of IL-6 that is described in this article, some reports suggest that oncostatin M (OSM) is increased in SSc (Tab. I). Based on its diverse biological functions, including endothelial activation, cellular proliferation, migration and differentiation of fibroblasts, induction of acute phase responses, and wound healing, OSM may represent a candidate target for therapy. This is further supported by reports of increased expression of OSM in the circulation and lesional tissue of patients with SSc (33-36). A clinical trial of an anti-OSM therapeutic antibody is under way (ClinicalTrials.gov identifier, NCT02386436).

Although IL-11 shares many characteristics with IL-6, including its effect on megakaryocytopoiesis and induction of acute phase proteins, IL-11 has a complex effect on immunomodulatory activities by reducing proinflammatory cytokines but interacting with other cytokines and regulatory molecules in the induction and amplification of autoimmune responses. Although it is not normally detected in systemic circulation, IL-11 is locally expressed and is present in lesional areas

TABLE I - Cellular origin and relevant biology of IL-6 family members

Biology of IL-6 family members and related proteins – potential as biomarkers and pathogenic mediators in SSc				
Protein	Major cell of origin	Potential target cells	Disease associations	Studies in SSc
IL-6	Fibroblasts, naive and memory B lymphocytes, monocytes, CD4+ T cells, hepatocytes, pulmonary artery smooth muscle cells, glomerular mesangial cells	Fibroblasts, macrophages, neutrophils, CD4 T cells, podocytes, hepatocytes, lymphocytes, endothelial cells, PSMCs	Rheumatoid arthritis, scleroderma, lung fibrosis, pulmonary hypertension	Increased circulating and local IL-6 levels correlate with disease activity in subset of SSc (6-8, 10, 19, 20). Differential IL-6 receptor expression may correlate with pattern of organ involvement (9)
IL-11	Fibroblasts, sub-epithelial myofibroblasts, epithelial cells, leukocytes, keratinocytes, synoviocytes chondrocytes, osteoblasts	Hematopoietic stem cells and megakaryocyte progenitor cells	Keloid, cancer, hemophilia, Crohn's disease	Increased levels in lung fibroblasts on microarray profiling of lesional lung fibroblasts in SSc-associated lung fibrosis (37)
OSM	Monocytes/macrophages, dendritic cells, neutrophils, and T lymphocytes	Epithelial, endothelial, smooth muscle cells, fibroblasts, chondrocytes, keratinocytes, tumor cell lines (with OSMR β) and hematopoietic cells	Inflammatory bowel disease, scleroderma, sarcoidosis, COPD, breast cancer, osteosarcoma	Increased local expression in lesional skin and bronchoalveolar lavage in SSc (33-36)
IL-31	Th2 and CD8+ T cells, monocytes/macrophages, mast cells, dendritic cells, epidermal keratinocytes, and dermal fibroblasts	Mast cells, eosinophils, dendritic cells, keratinocytes, macrophages, dermal microvascular endothelial cells, colonic sub-epithelial myofibroblasts, neurons from dorsal root ganglia, various tumor cells lines	Cutaneous allergic diseases and atopic dermatitis, allergic asthma and rhinitis, inflammatory bowel disease, hematopoietic and lymphoid tissue malignancies	Upregulated IL-31/IL-31R expression in lesional diffuse SSc skin (38)
LIF	Fibroblasts, monocytes, macrophages, T cells, osteoblasts, endometrial cells, hepatocytes, and retinal glial cells	Fibroblasts, monocytes/macrophages	Eosinophilic fasciitis, cancer development, and progression	None

COPD = chronic obstructive pulmonary disease; IL = interleukin; LIF = leukemia inhibitory factor; OSM = oncostatin M; PSMCs = pulmonary aortic smooth muscle cells; R = receptor; SSc = systemic sclerosis.

in atopic dermatitis (39). Limited data support increased transcriptomic IL-11 expression in lung fibroblasts in SSc-associated lung fibrosis, and recent data suggest that the dermal T cells derived from the IL-11/11R axis may be critical in Th17 differentiation in SSc (37, 40).

IL-31 has relatively low homology to IL-6 and does not share gp130 as a common receptor and signal transducer subunit in its receptor complex. It is implicated mainly in the pathogenesis of allergic diseases and is an important mediator of pruritus in some diseases. It has been proposed as a possible candidate biomarker in some cases of diffuse SSc, of which pruritus is a complication. Its receptor is expressed on fibroblasts, but there is no evidence that fibroblasts express the cytokine. IL-31 levels are elevated in the interstitial fluid of patients with SSc and must therefore be derived from non-fibroblastic cells (38). Leukemia inhibitory factor is another member of the IL-6 family that shares its receptor with OSM. Levels are elevated in whole blood assays in patients with eosinophilic fasciitis, but studies of SSc have not yet been reported (41).

There is a paucity of data on other IL-6-related cytokines, including IL-27, neuropoietin, ciliary neurotrophic

factor, and cardiotrophin 1, in SSc. IL-27 levels in sera, for example, were upregulated in patients with early-stage SSc with increased receptor expression in lesional fibroblasts (42), but this was not supported in a more recent study (24).

Conclusion

There is strong evidence to support the role of IL-6 in SSc, with emerging interest in its associated family members in early-stage diffuse scleroderma. Beyond an association with the induction of acute phase proteins and thrombopoiesis, correlation of levels of IL-6-related proteins with disease activity and survival outcome may help to stratify patient subgroups. The association between systemic or local IL-6 expression and pathogenic potential in specific organ manifestations, particularly skin and lung fibrosis, and in PAH may inform future therapeutic strategies in SSc. Greater understanding of the ligand-receptor interaction and downstream signaling pathways (summarized in Fig. 3) define the role of IL-6 and its family members in SSc and may help to elucidate potential targeted therapies.

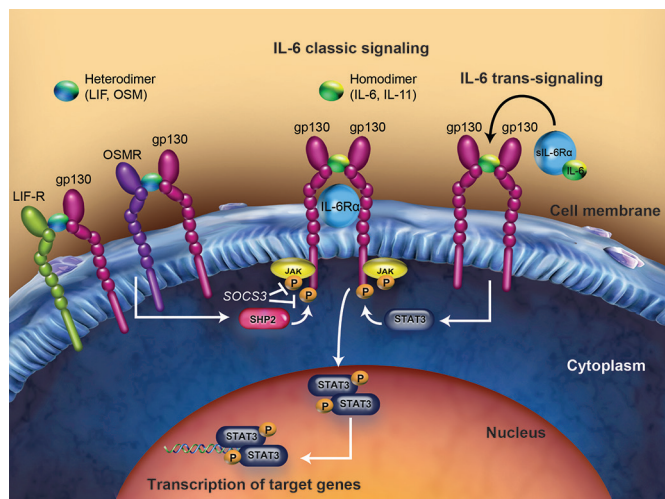


Fig. 3 - Distinct ligand-receptor signaling complexes for key IL-6 family members. IL-6 and IL-11 can bind to their ligand-specific receptors (IL-6R and IL-11R, respectively) to induce homodimerization of the common IL-6 receptor, gp130. However, in addition to membrane-bound (classic) IL-6R, IL-6 may interact with the soluble form (trans-signaling) of IL-6R alpha to facilitate signaling in cells that lack IL-6R. LIF and OSM bind to a specific receptor, LIF-R, and recruit gp130 to form a heterodimer. Further, OSM is capable of signaling via its own specific OSMR. OSMR is also part of the heterodimeric complex for IL-31 signaling. These IL-6 members share common downstream signaling transduction pathways with recruitment and activation of JAKs, which phosphorylate the receptor cytoplasmic domain providing docking sites for STAT3. STAT3 is then phosphorylated by JAK, dimerizes, and trans-locates to the nucleus, where it regulates its target genes, including *SOCS3*, in turn negatively regulating JAK-STAT signaling pathways. gp130 = glycoprotein 130; IL-6 = interleukin-6; IL-6R = interleukin-6 receptor; IL-11 = interleukin-11; IL-11R = interleukin-11 receptor; IL-31 = interleukin-31; JAK = Janus kinase; LIF-R = leukemia inhibitory factor receptor; OSMR = oncostatin M receptor; P = phosphorylate; SHP2 = Src homology 2 domain-containing phosphatase; sIL-6R α = soluble interleukin-6 receptor alpha; *SOCS3* = suppressor of cytokine signaling 3; STAT = signal transducer and activator of transcription.

Acknowledgments

Medical writing and editorial assistance was provided by Liselle Bovell, PhD, and Sara Duggan, PhD, of ApotheCom (Yardley, PA, USA).

Disclosures

Financial support: Medical writing and editorial assistance was funded by F. Hoffmann-La Roche Ltd.

Conflict of interest: CPD reports receiving consulting fees from Genentech-Roche, Actelion, GlaxoSmithKline, Bayer, Sanofi-Aventis, Inventiva, and Boehringer Ingelheim; a research grant from Bayer; speaker fees from Actelion and Boehringer Ingelheim; and a research grant to his institution from CSL Behring. VHO has nothing to disclose.

References

1. FDA-NIH Biomarker Working Group. BEST (Biomarkers, EndpointS, and other Tools) Resource: Silver Spring, MD: Food and Drug Administration (US); Bethesda (MD): National Institutes of Health (US); 2016. Available from: <https://www.ncbi.nlm.nih.gov/books/NBK326791/>. Accessed Oct 14, 2017.

2. Khanna D, Furst DE, Clements PJ, et al. Standardization of the modified Rodnan skin score for use in clinical trials of systemic sclerosis. *J Scleroderma Relat Disord*. 2017;2(1):11-18.
3. Bryan C, Knight C, Black CM, Silman AJ. Prediction of five-year survival following presentation with scleroderma: development of a simple model using three disease factors at first visit. *Arthritis Rheum*. 1999;42(12):2660-2665.
4. Fransen J, Popa-Diaconu D, Hesselstrand R, et al. Clinical prediction of 5-year survival in systemic sclerosis: validation of a simple prognostic model in EUSTAR centres. *Ann Rheum Dis*. 2011;70(10):1788-1792.
5. Muangchan C, Harding S, Khimdas S, Bonner A, Baron M, Pope J; Canadian Scleroderma Research group. Association of C-reactive protein with high disease activity in systemic sclerosis: results from the Canadian Scleroderma Research Group. *Arthritis Care Res (Hoboken)*. 2012;64(9):1405-1414.
6. Hasegawa M, Sato S, Fujimoto M, Ihn H, Kikuchi K, Takehara K. Serum levels of interleukin 6 (IL-6), oncostatin M, soluble IL-6 receptor, and soluble gp130 in patients with systemic sclerosis. *J Rheumatol*. 1998;25(2):308-313.
7. Needleman BW, Wigley FM, Stair RW. Interleukin-1, interleukin-2, interleukin-4, interleukin-6, tumor necrosis factor alpha, and interferon-gamma levels in sera from patients with scleroderma. *Arthritis Rheum*. 1992;35(1):67-72.
8. Hasegawa M, Sato S, Ihn H, Takehara K. Enhanced production of interleukin-6 (IL-6), oncostatin M and soluble IL-6 receptor by cultured peripheral blood mononuclear cells from patients with systemic sclerosis. *Rheumatology (Oxford)*. 1999;38(7):612-617.
9. Dumoitier N, Chaigne B, Régent A, et al. Scleroderma peripheral B lymphocytes secrete interleukin-6 and transforming growth factor beta and activate fibroblasts. *Arthritis Rheum (Munch)*. 2017;69(5):1078-1089.
10. Khan K, Xu S, Nihtyanova S, et al. Clinical and pathological significance of interleukin 6 overexpression in systemic sclerosis. *Ann Rheum Dis*. 2012;71(7):1235-1242.
11. Feghali CA, Bost KL, Boulware DW, Levy LS. Mechanisms of pathogenesis in scleroderma. I. Overproduction of interleukin 6 by fibroblasts cultured from affected skin sites of patients with scleroderma. *J Rheumatol*. 1992;19(8):1207-1211.
12. Scala E, Pallotta S, Frezzolini A, et al. Cytokine and chemokine levels in systemic sclerosis: relationship with cutaneous and internal organ involvement. *Clin Exp Immunol*. 2004;138(3):540-546.
13. Beirne P, Pantelidis P, Charles P, et al. Multiplex immune serum biomarker profiling in sarcoidosis and systemic sclerosis. *Eur Respir J*. 2009;34(6):1376-1382.
14. De Lauretis A, Sestini P, Pantelidis P, et al. Serum interleukin 6 is predictive of early functional decline and mortality in interstitial lung disease associated with systemic sclerosis. *J Rheumatol*. 2013;40(4):435-446.
15. Goh NS, Desai SR, Veeraghavan S, et al. Interstitial lung disease in systemic sclerosis: a simple staging system. *Am J Respir Crit Care Med*. 2008;177(11):1248-1254.
16. Liu X, Mayes MD, Pedroza C, et al. Does C-reactive protein predict the long-term progression of interstitial lung disease and survival in patients with early systemic sclerosis? *Arthritis Care Res (Hoboken)*. 2013;65(8):1375-1380.
17. Abdel-Magied RA, Kamel SR, Said AF, Ali HM, Abdel Gawad EA, Moussa MM. Serum interleukin-6 in systemic sclerosis and its correlation with disease parameters and cardiopulmonary involvement. *Sarcoidosis Vasc Diffuse Lung Dis*. 2016;33(4):321-330.
18. Jurisic Z, Martinovic-Kaliterna D, Marasovic-Krstulovic D, et al. Relationship between interleukin-6 and cardiac involvement in systemic sclerosis. *Rheumatology (Oxford)*. 2013;52(7):1298-1302.

19. Gourh P, Arnett FC, Assassi S, et al. Plasma cytokine profiles in systemic sclerosis: associations with autoantibody subsets and clinical manifestations. *Arthritis Res Ther*. 2009;11(5):R147.
20. Pendergrass SA, Hayes E, Farina G, et al. Limited systemic sclerosis patients with pulmonary arterial hypertension show biomarkers of inflammation and vascular injury. *PLoS ONE*. 2010;5(8):e12106.
21. Frech TM, Hudson M. Protective role of interleukin-6 in systemic sclerosis gastrointestinal tract involvement: case report and review of the literature. *Clin Exp Rheumatol*. 2015;33(4) (Suppl 91):S179-S181.
22. Khanna D, Denton CP, Jhreis A, et al. Safety and efficacy of subcutaneous tocilizumab in adults with systemic sclerosis (faSScinate): a phase 2, randomised, controlled trial. *Lancet*. 2016;387(10038):2630-2640.
23. Clark KE, Lopez H, Abdi BA, et al. Multiplex cytokine analysis of dermal interstitial blister fluid defines local disease mechanisms in systemic sclerosis. *Arthritis Res Ther*. 2015;17(1):73.
24. Budzyńska-Włodarczyk J, Michalska-Jakubus MM, Kowal M, Krasowska D. Evaluation of serum concentrations of the selected cytokines in patients with localized scleroderma. *Postepy Dermatol Alergol*. 2016;33(1):47-51.
25. Ihn H, Sato S, Fujimoto M, Kikuchi K, Takehara K. Demonstration of interleukin-2, interleukin-4 and interleukin-6 in sera from patients with localized scleroderma. *Arch Dermatol Res*. 1995;287(2):193-197.
26. Cox LA, Webster GF, Piera-Velazquez S, Jimenez SA. Multiplex assessment of serum cytokine and chemokine levels in idiopathic morphea and vitamin K1-induced morphea. *Clin Rheumatol*. 2017;36(5):1173-1178.
27. Shand L, Lunt M, Nihtyanova S, et al. Relationship between change in skin score and disease outcome in diffuse cutaneous systemic sclerosis: application of a latent linear trajectory model. *Arthritis Rheum*. 2007;56(7):2422-2431.
28. Giuggioli D, Lumetti F, Colaci M, Fallahi P, Antonelli A, Ferri C. Rituximab in the treatment of patients with systemic sclerosis. Our experience and review of the literature. *Autoimmun Rev*. 2015;14(11):1072-1078.
29. Bosello S, De Santis M, Lama G, et al. B cell depletion in diffuse progressive systemic sclerosis: safety, skin score modification and IL-6 modulation in an up to thirty-six months follow-up open-label trial. *Arthritis Res Ther*. 2010;12(2):R54.
30. Kreuter A, Hyun J, Skrygan M, et al. Ultraviolet A1-induced downregulation of human beta-defensins and interleukin-6 and interleukin-8 correlates with clinical improvement in localized scleroderma. *Br J Dermatol*. 2006;155(3):600-607.
31. Pope J, Walker KM, de Leon F, Vanderhoek L, Seney S, Summers KL. Correlations between changes in cytokines and clinical outcomes for early phase (proof of concept) trials in active diffuse systemic sclerosis using data from an imatinib study. *Rheumatology (Oxford)*. 2014;53(10):1830-1834.
32. Quillinan N, Clark KE, Youl B, et al. Multiplex serum protein analysis reveals potential mechanisms and markers of response to hyperimmune caprine serum in systemic sclerosis. *Arthritis Res Ther*. 2017;19(1):45.
33. Feeney M, Syed F, Khan K, et al. Oncostatin M as a potential molecular target in systemic sclerosis. *Arthritis Rheumatol*. 2015;67(Suppl 10):2297-2298. Abstract 1914, 2015 ACR/ARHP Annual Meeting. Available from: <http://acrabstracts.org/abstract/oncostatin-m-as-a-potential-molecular-target-in-systemic-sclerosis/>. Accessed Oct 14, 2017.
34. Reid J, Zamuner S, Edwards K, et al. Targeting oncostatin M in the target tissue: assessment of in-vivo affinity and target engagement of an anti-OSM monoclonal antibody by combining blood and skin blister fluid data. *Arthritis Rheumatol*. 2016;68 (Suppl 10):2372. Abstract 1881, 2016 ACR/ARHP Annual Meeting. Available from: <http://acrabstracts.org/abstract/targeting-oncostatin-m-in-the-target-tissue-assessment-of-in-vivo-affinity-and-target-engagement-of-an-anti-osm-mono-clonal-antibody-by-combining-blood-and-skin-blister-fluid-da-ta/>. Accessed Oct 14, 2017.
35. Mozaffarian A, Brewer AW, Trueblood ES, et al. Mechanisms of oncostatin M-induced pulmonary inflammation and fibrosis. *J Immunol*. 2008;181(10):7243-7253.
36. Luzina IG, Atamas SP, Wise R, et al. Occurrence of an activated, profibrotic pattern of gene expression in lung CD8+ T cells from scleroderma patients. *Arthritis Rheum*. 2003;48(8):2262-2274.
37. Lindahl GE, Stock CJ, Shi-Wen X, et al. Microarray profiling reveals suppressed interferon stimulated gene program in fibroblasts from scleroderma-associated interstitial lung disease. *Respir Res*. 2013;14(1):80.
38. Abdi BA, Zafar S, Taki Z, et al. IL-31 is an inflammatory profibrotic factor elevated in a subset of scleroderma patients with severe pruritus. *Arthritis Rheumatol*. 2016;68(Suppl 10): Abstract 821, 2016 ACR/ARHP Annual Meeting. Available from: <http://acrabstracts.org/abstract/il-31-is-an-inflammatory-pro-fibrotic-factor-elevated-in-a-subset-of-scleroderma-patients-with-severe-pruritus>. Accessed October 14, 2017.
39. Fiset PO, Leung DY, Hamid Q. Immunopathology of atopic dermatitis. *J Allergy Clin Immunol*. 2006;118(1):287-290.
40. Balaji H, Low AH, Ang CH, et al. Pathogenic T cell responses in systemic sclerosis is shaped by novel cytokine axis in the microenvironment: a multidimensional, high throughput analysis. *Arthritis Rheumatol*. 2016;68(Suppl 10): Abstract 3111, 2016 ACR/ARHP Annual Meeting. Available from: <http://acrabstracts.org/abstract/pathogenic-t-cell-responses-in-systemic-sclerosis-is-shaped-by-novel-cytokine-axis-in-the-micro-environment-a-multidimensional-high-throughput-analysis>. Accessed October 14, 2017.
41. Viillard JF, Taupin JL, Ranchin V, Leng B, Pellegrin JL, Moreau JF. Analysis of leukemia inhibitory factor, type 1 and type 2 cytokine production in patients with eosinophilic fasciitis. *J Rheumatol*. 2001;28(1):75-80.
42. Yoshizaki A, Yanaba K, Iwata Y, et al. Elevated serum interleukin-27 levels in patients with systemic sclerosis: association with T cell, B cell and fibroblast activation. *Ann Rheum Dis*. 2011;70(1):194-200.