

Bond University  
Research Repository



**Influence of inpatient dietary restriction on acute uncomplicated diverticulitis: A pilot observational study**

Crichton, Megan; Dahl, Camilla ; Jenkins-Chapman, Julie; Nucera, Romina; Chen, Yvonne; Russell, Kayla; Marshall, Skye

Published: 01/11/2017

*Document Version:*

Publisher's PDF, also known as Version of record

[Link to publication in Bond University research repository.](#)

*Recommended citation(APA):*

Crichton, M., Dahl, C., Jenkins-Chapman, J., Nucera, R., Chen, Y., Russell, K., & Marshall, S. (2017). *Influence of inpatient dietary restriction on acute uncomplicated diverticulitis: A pilot observational study*. 37-38. Abstract from The First Gold Coast Health Research Week Conference 2017, Gold Coast, Australia.

**General rights**

Copyright and moral rights for the publications made accessible in the public portal are retained by the authors and/or other copyright owners and it is a condition of accessing publications that users recognise and abide by the legal requirements associated with these rights.

For more information, or if you believe that this document breaches copyright, please contact the Bond University research repository coordinator.

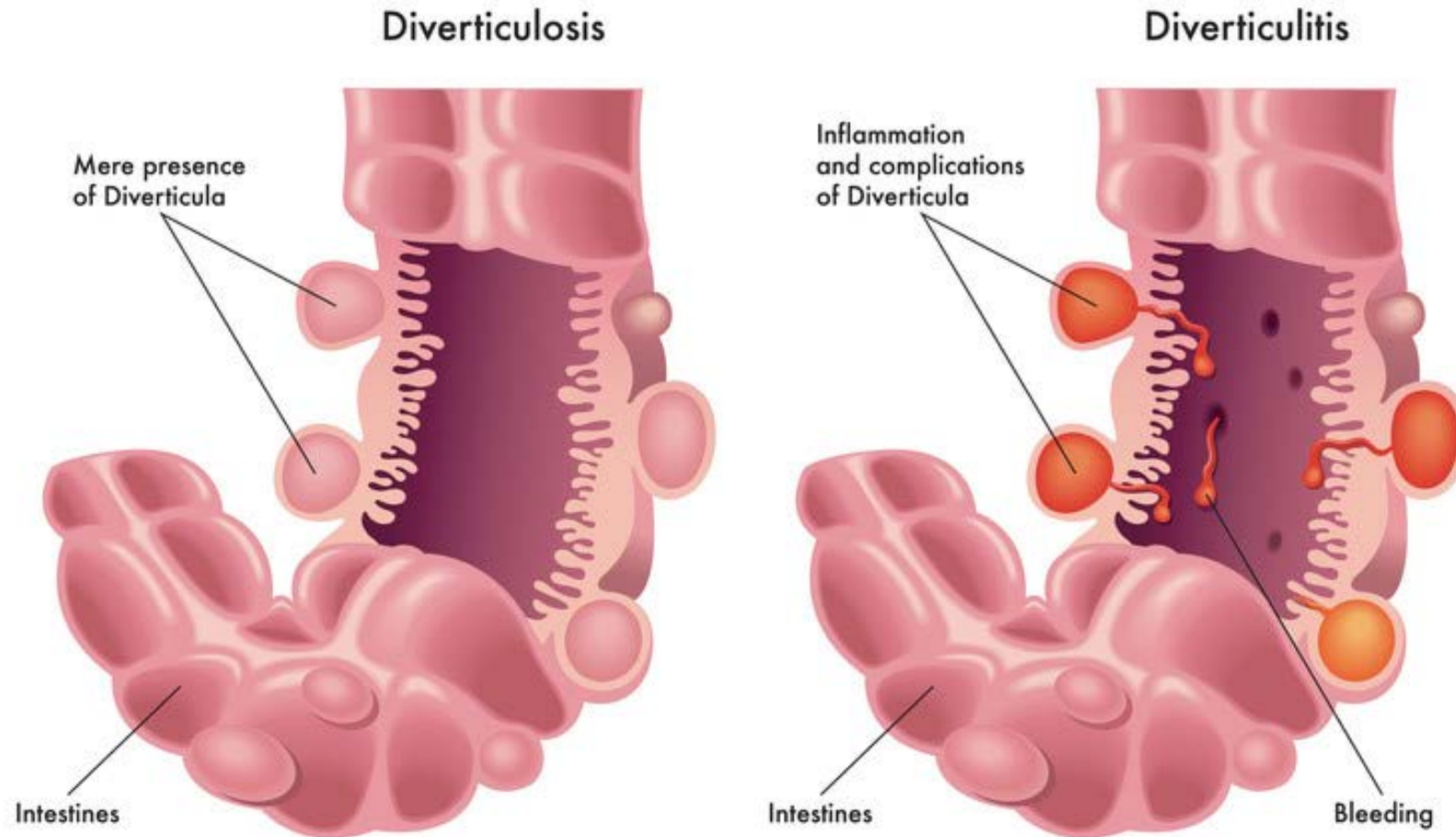


# Influence of Inpatient Dietary Restriction on Acute Uncomplicated Diverticulitis

## A Pilot Observational Study

**Research Team:** Megan Crichton, Camilla Dahl, Skye Marshall, Julie Jenkins-Chapman, Romina Nucera, Yvonne Chen, Kayla Russell, Sophie Mahoney

# Background



# Background

- >152,000 annual hospitalisations
- Length of stay 3-4 days
- 1.5 million days of inpatient care
- Annual cost AUD\$3.4 billion

# Background



Dietary manipulation  
is a core component  
of management

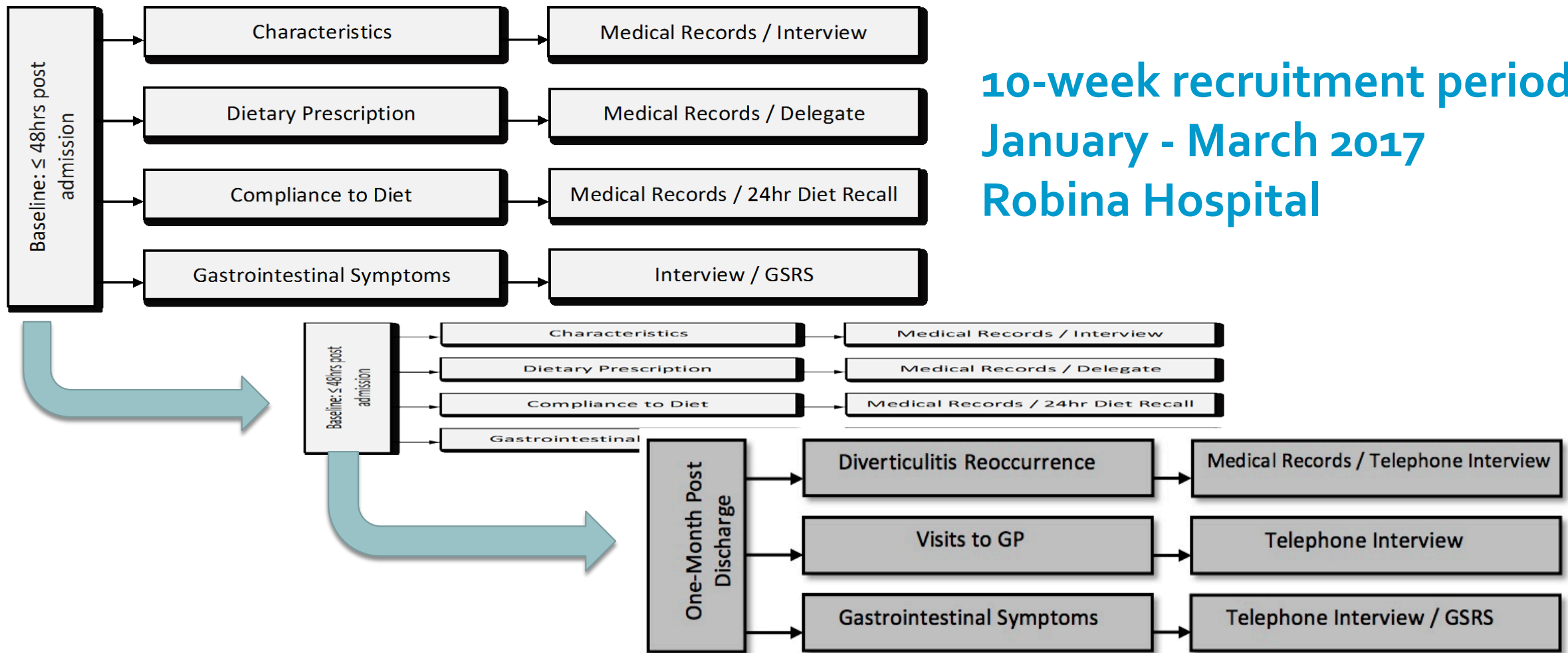
# Research Question

What is the effect of inpatient prescription of liberalised diets compared with restrictive diets on hospital length of stay and 30-day diverticulitis reoccurrence?

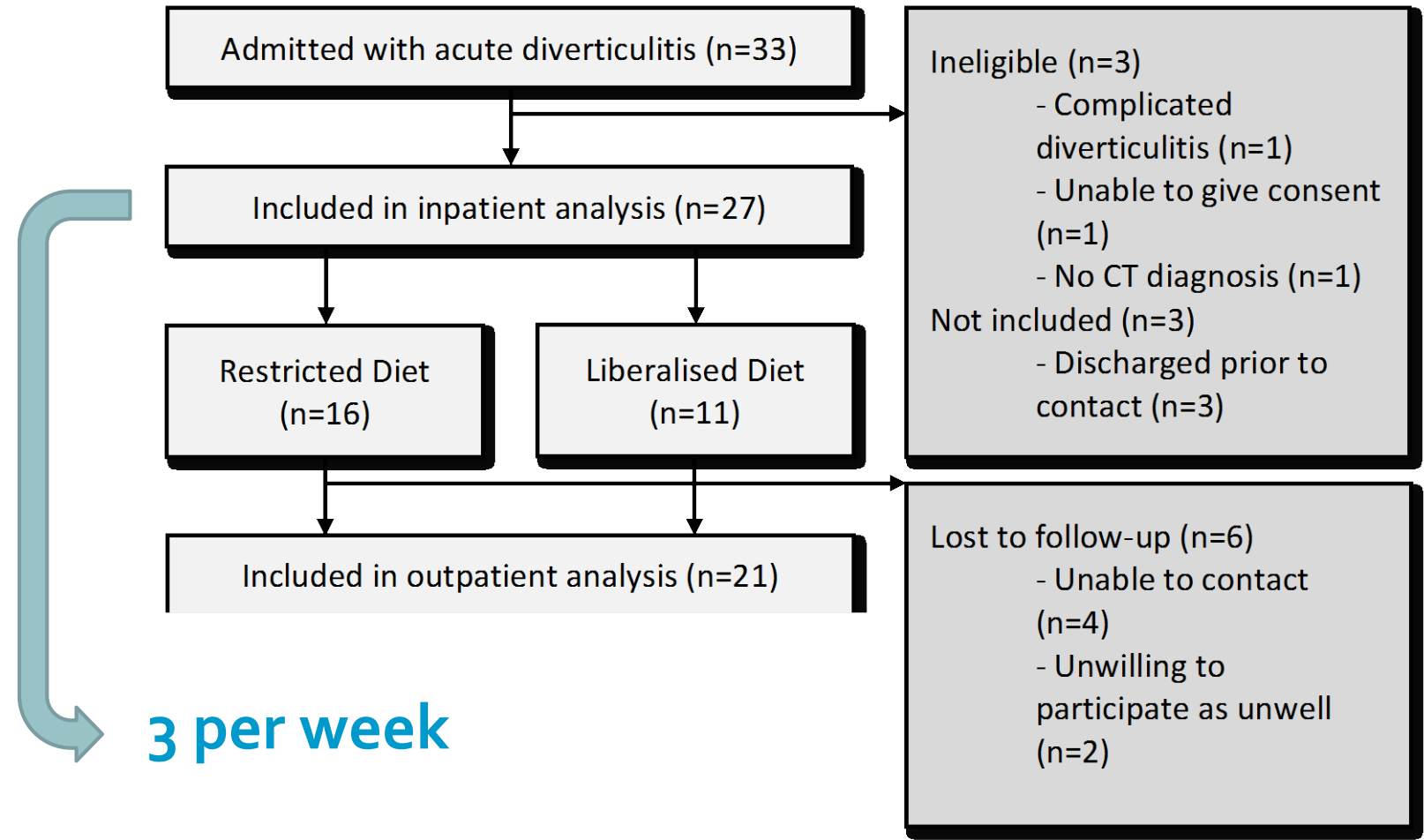
Liberalised diet = solid food in  $\leq 48$  hours  
Restricted diet = fasting/fluid only for  $\geq 48$  hours

# Methods

10-week recruitment period  
January - March 2017  
Robina Hospital



# Results: Recruitment





# Results: Baseline Characteristics

	Inpatient Diet Analysis at Baseline	
Participant Characteristics	Restricted Diet (n=16)	Liberalised Diet (n=11)
<b>Age (years)</b>	54 ± 11*	65 ± 14*
<b>Body Mass Index (kg/m<sup>2</sup>)</b>	26.7 ± 3.3	27.6 ± 5.7
<b>Presenting Temperature (°C)</b>	36.8 ± 0.6	36.8 ± 0.7
<b>Gender (female)</b>	9 (56%)	8 (73%)
<b>Ethnicity (Caucasian Australian)</b>	11 (69%)	6 (55%)
(Caucasian European)	1 (6%)	3 (27%)
(New Zealander)	2 (13%)	2 (18%)
(African)	1 (6%)	0
(Asian)	1 (6%)	0
<b>Cigarette Smoking (yes)</b>	4 (25%)	2 (18%)
<b>Exceeding ETOH Guidelines (yes)</b>	4 (25%)	2 (18%)
<b>History of Diverticulosis (yes)</b>	5 (31%)*	9 (82%)*
<b>History of Diverticulitis (yes)</b>	4 (25%)	6 (55%)
<b>Previous Admission (yes)</b>	3 (19%)	5 (46%)
<b>Admitted with Diarrhoea (yes)</b>	6 (40%)	3 (27%)
<b>Admitted with Constipation (yes)</b>	3 (20%)*	7 (64%)*

\* P < 0.05

	Inpatient Gastrointestinal Symptoms	
Inpatient Gastrointestinal Symptoms	Restricted Diet (n=16)	Liberalised Diet (n=11)
<b>Total GSRS Score</b>	8.9 ± 3.4	7.6 ± 3.0
Abdominal Pain	2 (0-4)	1 (1-3)
Reflux	0 (0-4)	0 (0-2)
Indigestion	3.9 ± 2.1	2.6 ± 1.6
Constipation	1.6 ± 1.3	1.5 ± 1.2
Diarrhoea	0.5 (0-8)	2 (0-4)

P > 0.05

# Results: Length of Stay

---

**Length of Stay (days)**

---

---

**Length of Stay (days)**

---

\*  $P=0.031$  BUT small sample size, not precise

# Results: Length of Stay



After accounting for smoking status  
and GSRS Score at baseline,

Liberalised diet decreased LOS by  
**1.1 days\***

( $P=0.035$ )

# Results: Reoccurrence / GP Visits

	Restricted Diet Group (n=16)	Liberalised Diet Group (n=11)	
Reoccurrence	1	0	<b>P&gt;0.05</b>
GP visits	5	2	

# Take Home Message



A liberalised diet may be favourable compared to a restricted diet

**BUT**

a larger sample size and RCT is needed to strengthen confidence in findings.



Thank you  
Questions?