

Stochastic modelling of hydraulic conductivity derived from geotechnical data; an example applied to Central Glasgow

Williams, J.D.O.^{a,*}, Dobbs, M.R.^a, Kingdon, A.^a, Lark, R.M.^a, Williamson, J.P.^a, MacDonald, A.M.^b and Ó Dochartaigh, B.É.^b

^aBritish Geological Survey, Environmental Science Centre, Keyworth, Nottingham, NG12 5GG, UK.

^bBritish Geological Survey, The Lyell Centre, Research Avenue South, Edinburgh, EH14 4AP, UK.

*Corresponding author

Running Head: Hydraulic conductivity models of Glasgow

ABSTRACT: Characterising the 3D distribution of hydraulic conductivity and its variability in the shallow subsurface is fundamental to understanding groundwater behaviour and to developing conceptual and numerical groundwater models to manage the subsurface. However, directly measuring *in situ* hydraulic conductivity can be difficult and expensive and is rarely carried out with sufficient density in urban environments.

In this study we model hydraulic conductivity for 603 sites in the unconsolidated Quaternary deposits underlying Glasgow using Particle Size Distribution (PSD) and density description widely available from geotechnical investigations. Six different models were applied and the MacDonald formula found to be most applicable in this heterogeneous environment, comparing well to the few available *in situ* hydraulic conductivity data. The range of the calculated hydraulic conductivity values between the 5th and 95th percentile was $1.56 \times 10^{-2} - 4.38$ m/day with a median of 2.26×10^{-1} m/day. These modelled hydraulic conductivity data were used to develop a suite of stochastic 3D simulations conditioned to existing 3D representations of lithology. Ten percent of the input data were excluded from the modelling process for use in a split-sample validation test, which demonstrated the effectiveness of this approach compared to non-spatial or lithologically unconstrained models. Our spatial model reduces the Mean Squared Error between the estimated and observed values at the excluded data locations over those predicted using a simple homogenous model by 73%.

The resulting 3D hydraulic conductivity model is of a much higher resolution than would have been possible from using only direct measurements, and will improve understanding of groundwater flow in Glasgow and reduce the spatial uncertainty of hydraulic parameters in groundwater process models. The methodology employed could be replicated in other regions where significant volumes of suitable geotechnical and site investigation data are available to predict ground conditions in areas with complex superficial deposits.

KEY WORDS: Groundwater, groundwater model, particle size distribution, permeability, Quaternary deposits, superficial geology

Developing a better understanding of the nature of the subsurface and its properties is fundamental to facilitate planning, design and construction in urban areas and for managing energy, resources and waste. Knowledge of the hydraulic conductivity of superficial deposits is of particular importance to help identify subsurface contaminant pathways (Gogu & Dassargues 2000; Labolle & Fogg 2001), predict and mitigate groundwater flooding (Chilton 1999; MacDonald *et al.* 2014), evaluate the efficacy of sustainable urban drainage systems (Woods-Ballard *et al.* 2007), quantify recharge to underlying aquifers (Lerner 2002; Cuthbert *et al.* 2009; Misstear *et al.* 2009), assess potential shallow groundwater aquifers (Maupin & Barber 2005) and to characterise the general interaction of groundwater with the urban environment (Chilton 1999). Advances in computer-aided three-dimensional (3D) geological and groundwater modelling allow such issues to be evaluated in detail (Culshaw 2005; MacCormack *et al.* 2005; Watson *et al.* 2015; Turner *et al.* 2015; Marchant *et al.* 2013).

The most direct and accurate way to measure hydraulic conductivity is through *in situ* testing of the saturated horizon using constant rate pumping tests or slug tests (Freeze & Cherry 1979; Jones 1993). However, suitable piezometers are rarely available to carry out sufficient tests to an appropriate standard to characterise the variability encountered within complex sequences of glacial and marine/estuarine material (Bricker & Bloomfield 2014; MacDonald *et al.* 2012; Jones 1993; Renard 2005; McKay *et al.* 1993). Acquisition of such data can be expensive, and the intrinsic heterogeneity of glacial and fluvial deposits makes hydrogeological characterisation difficult, especially in urban areas where the subsurface has been extensively altered (Bricker & Bloomfield 2014; Schirmer *et al.* 2013). Hydraulic conductivity measurements can also be obtained from laboratory tests on undisturbed samples taken from aquifers, but these can also be difficult to carry out. They rely on sourcing undisturbed material, which requires more costly drilling techniques; and the testing itself can be time consuming and expensive. Therefore, they are rarely routinely carried out at city-wide scales. Other methods of directly measuring hydraulic conductivity are available, such as infiltrometers (Angulo-Jaramillo *et al.* 2000) and constant head permeameters (Elrick *et al.* 1989), but have only recently been applied to characterise the hydraulic conductivity of superficial aquifers (MacDonald *et al.* 2012).

Directly measured permeability data are not widely available; therefore, proxy data derived from particle size data, are commonly used as an alternative (Bricker & Bloomfield 2014; Vienken & Dietrich 2011). The relationship between particle size and hydraulic conductivity is well documented, and numerous formulae, both theoretical and empirical, have been derived since the 19th century to predict hydraulic conductivity (Hazen 1892; Schlichter 1899; Vukovic´ & Soro 1992; Millham & Howes 1995; Odong 2007; Song *et al.* 2009; Vienken & Dietrich 2011). However, these formulae are best suited to loose sand and gravel deposits of a specific grain size and uniformity of grain size distribution, and often only indirectly account for sediment density or grain packing (Vukovic´ & Soro 1992; Chapuis 2004). Therefore, they are limited in their application to highly heterogeneous glacial, fluvial and marine marginal deposits, such as those beneath many urban environments in northern Europe, the USA and Canada. Wider factors controlling permeability are the subject of ongoing study, including particle shape, packing and compaction, all of which are more significant in heterogeneous material where clay content, compaction and deformation are variable (Koltermann & Gorelick 1995; Mondol *et al.* 2007). MacDonald *et al.* (2012) developed an empirical formula that uses both grain size and relative density to predict hydraulic conductivity in highly heterogeneous superficial deposits (hereafter this will be referred to as the MacDonald formula). The formula uses standard geotechnical parameters that are near ubiquitous in urban areas, both in the UK and worldwide, and was found to reliably predict hydraulic conductivity (log K) across a range of permeability values from 0.001 to >40 m/day.

In this study we characterise the three dimensional distribution of hydraulic conductivity and its variability across the central parts of the city of Glasgow, in order to understand groundwater

behaviour and to aid in developing conceptual and numerical groundwater models. This understanding is also essential for efforts to improve management of groundwater resources and to mitigate against any adverse impacts of groundwater flow. As well as forming a potential resource for water supply, energy and waste water disposal, groundwater can play a role in flooding and the transfer of contaminants. For example, Fordyce *et al.* (this volume) highlight the high levels of potentially harmful, particularly metallic waste from former industrial sites buried at many locations throughout Glasgow, which if mobilised, could have potentially deleterious consequences on the overlying population.

To test how successfully proxy geotechnical data can be used to characterise the likely 3D hydraulic conductivity distribution of the Quaternary deposits underlying the city of Glasgow, we i) use the MacDonald formula to derive a proxy hydraulic conductivity dataset derived from geotechnical data for Glasgow, ii) compare the MacDonald values with those derived from six other commonly used formulae, iii) validate the derived hydraulic conductivity data against a limited number of recorded *in situ* hydraulic conductivity data, iv) develop a suite of stochastic 3D simulations conditioned to existing 3D representations of lithology, and v) perform a split-sample validation test to demonstrate the effectiveness of the technique compared to non-spatial or lithologically unconstrained models.

1. Geological Background

The city of Glasgow is located in west central Scotland (Figure 1) and is one of the top five most populous cities in the UK. Glasgow has a long history as a trading port and grew rapidly during the Industrial Revolution as a result of shipping and the extractive and manufacturing industries. Over the last 100 years there has been a steady decline in these industries resulting in a legacy of disused brownfield sites that are now the targets of a major regeneration plan (Campbell *et al.* 2010).

At least five glaciations are thought to have occurred in the Clyde Basin during the last 0.5 Ma (Lee *et al.* 2012). Browne & McMillan (1989), Finlayson *et al.* (2010) and Finlayson (2012) provide a detailed account of the glacial cycles affecting the Clyde region and the associated lithostratigraphy, so only a brief description relevant to this study is outlined here. The superficial deposits of interest are the result of depositional processes during and following the last, Late Devensian, glacial maximum some 35,000 years BP (Brown *et al.* 2007; Jacobi *et al.* 2009), which were deposited on a substrate of Carboniferous sedimentary and igneous rocks. The lithostratigraphic units are broadly divided into two sedimentological facies associations: glacial and post-glacial (Kearsey *et al.* 2015). The glacial facies include the Wilderness Till Formation, the Cadder Sand and Gravel Formation, the Broomhill Clay Formation and the Baillieston Till, while the post-glacial facies consists of all remaining lithostratigraphic units overlying the Wilderness Till Formation (Kearsey *et al.* 2015). The Wilderness Till Formation, which comprises massive to locally stratified sandy silty clay diamicton, rests directly on bedrock in most of the study area, but in some areas rests on glaciofluvial sands and gravels, buried glaciolacustrine clays and/or the older the Baillieston Till, where these are preserved within bedrock depressions. The post-glacial facies consists of subaqueous outwash-fan sand and gravel deposits, glaciomarine clays and fluvially-influenced estuarine sands (Kearsey *et al.* 2015).

The lithostratigraphic units described above are highly heterolithic in nature, and it can be difficult to distinguish between them as there is often little or no visible lithological difference between units. Therefore, Kearsey *et al.* (2015) utilised stochastic modelling techniques, more commonly employed by the oil and gas industry for reservoir modelling studies, to simulate the distribution of lithology within a cellular geological model (50 x 50 x 0.5 m resolution) representing the superficial deposits in Glasgow. A key output of the Kearsey *et al.* (2015) study was a suite of 500 different, but equally probable simulations of the lithological variability across the model. These simulations are used here to condition stochastic simulations of the derived hydraulic conductivity within the model in order to eliminate some of the inherent lithological variability within the lithostratigraphic units. The model of

Kearsey *et al.* (2015) does not include the variable thickness of made ground, which cannot be accurately quantified in many parts of the city, and covers much of the superficial geology of the city. Therefore, this is not included in the model described here, though it is noted that made ground can exert an important control on shallow groundwater systems. Depending on local characteristics it can form either a barrier, or a preferential route for recharge and contamination, and/or it can be a contaminant source in itself (Ó Dochartaigh *et al.* this volume; Fordyce *et al.* this volume). The component materials of made ground can either be waste such as masonry, derived locally from specific sites, or can be imported from further afield. Therefore, they are highly variable over short distances so their parameters are not geologically controlled. Separate analysis and modelling of the properties of made ground is recommended for future work.

2. Derivation of hydraulic conductivity

2.1 Methodology

Hydraulic conductivity has been derived from geotechnical data held by the British Geological Survey's National Geotechnical Properties Database (NGPD) (Self *et al.* 2012), utilising the MacDonald formula (equation 1). The MacDonald formula uses d_{10} and Soil State Description value (SSD) to derive hydraulic conductivity in units of m/day.

MacDonald Equation (from MacDonald *et al.* 2012):

$$\log K = 0.79 \log d_{10} + (2.1 - 0.38 \text{ SSD}) \quad \text{Equation 1}$$

The d_{10} is the maximum grain diameter (in mm) of the smallest 10% by weight of particles obtained from a Particle Size Distribution (PSD) test. The PSD test is a standardised geotechnical test (BS 1377-2:1990: British Standards Institution 1990) undertaken by passing a representative sample of material through a set of sieves ranging in aperture size from 75.00 mm to 0.063 mm.

Soil state directly describes relative density (for coarse soils), and consistency, which is indirectly related to density (for fine soils). Soil state description is routinely recorded when describing soils in accordance with British standards for site investigations (BS5930:1999: British Standards Institution 1999). The standard systematically describes: the state of fine soils (silt and clay) from very soft through soft, firm and stiff to very stiff; and coarse soils (sand and gravel) from very loose through loose, medium dense, dense to very dense. For both coarse and fine soils, SSD is ranked from 1 for very loose and very soft soils through to 5 for very dense and very stiff soils (MacDonald *et al.* 2012).

PSD data and SSD were extracted from the NGPD using an area search query, which returned all data within the confines of a square within British National Grid (BNG) coordinates [255000,660000 265000,670000]. A total of 2345 samples were found in the NGPD which contained XYZ coordinates, PSD and SSD data together with lithostratigraphic descriptions.

2.2 Alternative methods

In order to put the results of the MacDonald formula in context and verify whether it was the most appropriate method to use, comparison was made with derived values from six other formulae commonly used for predicting hydraulic conductivity from particle size data. Multiple formulae were evaluated:

Hazen Equation (after Vuković & Soro 1992):

$$K = CH d_{10}^2 (0.7 + 0.03T) \quad \text{Equation 2}$$

Where K is hydraulic conductivity in units of m/day, CH is a coefficient after Hazen (1892), assumed to be 1000 and T is temperature in °C, assumed to be 10.

Seelheim Equation (after Vienken & Dietrich 2011):

$$K = 0.00357 \times d_{50}^2 \quad \text{Equation 3}$$

Where K is hydraulic conductivity in units of m/sec and d_{50} is the diameter of the 50th percentile particle size (mm).

United States Bureau of Reclamation (USBR) Equation (after Vuković & Soro 1992):

$$K = 0.36 d_{20}^{2.3} \quad \text{Equation 4}$$

Where K is hydraulic conductivity in units of cm/sec and d_{20} is the diameter of the 20th percentile particle size (mm).

Beyer Equation (after Vuković & Soro 1992):

$$K = CB d_{10}^2 \quad \text{Equation 5}$$

Where K is hydraulic conductivity in units of m/sec, d_{10} is the diameter of the 10th percentile particle size (mm), CB is the Beyer coefficient ($4.5 \times 10^{-3} \log(500/U)$) and U is the coefficient of uniformity (d_{60}/d_{10}) where d_{60} is the diameter of the 60th percentile particle size (mm).

Kaubisch Equation (after Vienken & Dietrich 2011):

$$K = 10^{0.0005P^2 - 0.12P - 3.59} \quad \text{Equation 6}$$

Where K is hydraulic conductivity in units of m/sec and P is the percentage particle size <0.06 mm.

Modified version of Kozeny-Carman Equation (after Odong 2007; Barahona-Palomo *et al.* 2011; Bricker & Bloomfield 2014):

$$K_{GSD} = 8.3 \times 10^{-3} (\rho_w g) / (\mu_w) (n^3 / (1-n^2)) d_{10}^2 \quad \text{Equation 7}$$

Where ρ_w is the density of water (at 10°C), g is the acceleration due to gravity, μ_w is the dynamic viscosity of water (at 10°C), n is porosity, taken to be $0.255(1+0.83^U)$ after Vuković & Soro (1992), and U is the coefficient of uniformity (d_{60}/d_{10}).

All of the formulae have been developed for, or were derived from, material with a limited range of grainsizes. A summary of the application ranges, and an assessment of these application ranges for the data extracted from the NGPD is presented in Table 1.

Less than 11% of the samples meet the application ranges for Hazen, USBR and Beyer, while less than 50% meet the application range for Kaubisch and Kozeny-Carman. Neither MacDonald nor Seelheim have known restrictions on application; however, both were derived for lithologies with a range of grain size values – from clay to gravel in the case of MacDonald, and clay to sand in the case of Seelheim. For Seelheim, approximately 70% of the samples do not contain significant amounts of gravel (here considered to be where >25% of the sample is coarser than 2.00 mm) and are therefore considered to be within the application range. For MacDonald, >82% of the data from central Glasgow have a d_{10} value within the range of d_{10} values used to derive the formula, and are therefore considered to be within the application range.

Based solely on assessment of formula application range to the grain size of samples obtained from PSD data, the MacDonald formula is likely to be the most suitable for predicting the hydraulic conductivity of superficial deposits in central Glasgow. This is principally due to the wide range of grain sizes present, and in particular the high proportion of finer-grained material (silt and clay <0.06 mm). The MacDonald formula is also considered particularly suitable for Glasgow because it uses a measure of relative density to account for changes in permeability associated with greater and lesser degrees of compaction. Therefore, it is likely to be more suitable for predicting hydraulic conductivity

in environments where some superficial deposits have been subject to multiple glaciations, as is the case in Glasgow.

2.3 Analysis of derived hydraulic conductivity

Table 2 presents a summary of the hydraulic conductivity data derived using different formulae. Values calculated using the MacDonald formula have a near normal distribution and median values that fall in the centre of the population of medians derived from the other formulae, so are broadly representative of these. They also have the second smallest range, and better match the typical hydraulic conductivity values for common lithologies observed in Glasgow, as summarised in Lewis *et al.* (2006). The majority of the outputs from other formulae have proven to be unsuited for samples with large ranges in grain sizes, as demonstrated by the improbable maximum values derived. For example, maximum hydraulic conductivity values calculated using the Hazen, Seelheim, USBR, Beyer and Kozeny-Carman formulae are far in excess of the typical values of 5–10² m/day for sand and gravel deposits given by Lewis *et al.* (2006). Some formulae, in particular Beyer, are also ill-suited to very heterogeneous materials and even produce negative values where the uniformity coefficient is greater than 500. Therefore, the outputs from the MacDonald formula were used for the modelling process.

2.3.1 Comparison with *in situ* hydraulic conductivity

A limited number of *in situ* hydraulic conductivity data are also available, presented by lithostratigraphic unit (Bonsor *et al.* 2010; Ó Dochartaigh *et al.* this volume). The data comprise of between 1 and 17 individual measurements for each of the five most widespread lithostratigraphic units; the Broomhouse Sand and Gravel Formation, Bridgeton Sand Member, Gourock Sand Member, Paisley Clay Member and the Wilderness Till Formation. These data were used to validate the derived hydraulic conductivity data with the proviso that lithostratigraphy does not necessarily provide a useful predictor of lithology, due to the heterolithic nature of the deposits in Glasgow (Kearsey *et al.* 2015). Hydraulic conductivity data derived using the MacDonald formula are summarised by lithostratigraphic unit in Table 3, and in box and whisker plots shown in Figure 2. The box plots (Figure 2) demonstrate that the MacDonald formula produces hydraulic conductivity values with a much smaller distribution of values that are closer to the *in situ* hydraulic conductivity data than any of the other formulae for nearly every lithostratigraphic unit (including total range, interquartile ranges and median). This supports the findings of the application range analysis (Table 1) that the MacDonald formula is the most appropriate to use for the complex heterogeneous deposits underlying central Glasgow.

As only a limited number of *in situ* measured data are available, and those data that are available are not randomly distributed (potentially being biased towards sites with higher hydraulic conductivities), it is not possible to carry out a robust statistical validation of the derived hydraulic conductivity data. The highest number of *in situ* values were measured from the Gourock Sand Member (14) and the Paisley Clay Member (17), with only a single measurement from the Broomhouse Sand and Gravel Formation, six from the Bridgeton Sand Member and five from the predominantly fine-grained Wilderness Till Formation. A comparison of the available measured data against the derived data is shown in Figure 3, and generally shows a close comparison of the two distributions beneath the 70th percentile suggesting that the calculated values are representative of field observations. Above the 70th percentile, there are only a limited number of *in situ* measured data and they are biased to higher values, but are still within the range estimated from the derived data. This suggests that the calculated values are representative of all but highly permeable lithologies which have limited geographical extent (Kearsey *et al.* 2015).

2.3.2 Comparison against lithological data

Kearsey *et al.* (2015) developed a suite of stochastic models to investigate the distribution of lithology within the superficial deposits underlying Glasgow. Six lithological categories were used based on soil descriptions and PSD data: ‘Organic’, ‘Soft Clay’, ‘Stiff Clay Diamicton,’ ‘Silt’, ‘Sand’ and ‘Sand and Gravel.’ The lithology of the model domain is described by an array of discrete properties, attributing values to individual cells in the grid. The data and methodology used to generate the grid and its property attribution is described in detail by Kearsey *et al.* (2015), and so is not repeated in detail here. Simulated properties include 500 unique, yet equally probable realisations of lithology. For the purposes of this study, they are each considered to be valid representations of the bulk lithology expected to occur within each discrete model cell. Furthermore, the use of multiple individual realisations rather than probability-based methods allows for the possibility that end-member lithologies could feasibly exist within any given cell in the absence of hard conditioning data, despite the low probability that such lithologies might occur at any given location.

In order to test whether these lithology simulations could be used to condition the hydraulic conductivity models, the corresponding lithology was recorded against each derived hydraulic conductivity measurement. A statistical summary of the derived hydraulic conductivity data for the different lithology classes is provided in Table 4.

It can be seen from Table 4 that the mean values for the different lithology classes are consistent with expected hydraulic conductivity for different materials found in nature as given by Bear (1972) and Lewis *et al.* (2006). The mean values for both the ‘Soft Clay’ and ‘Stiff Clay Diamicton’ classes are within the range given for unconsolidated layered clays, and the mean values for the ‘Silt’, ‘Sand’ and ‘Sand and Gravel’ classes all fall within the range for well sorted sand or sand and gravels, although it is noted that due to the logarithmic nature of the classification given by Bear (1972), both ‘Silt’ and ‘Sand’ could justifiably also be described as falling within the upper range of the scale for very fine sand, silt, loess and loam. The mean values for the ‘Stiff Clay Diamicton’ (Till), ‘Silt’, ‘Sand’ and ‘Sand and Gravel’ all fall within the ranges given for common rock types by Lewis *et al.* (2006). Together with the intuitive increase of the mean values with grain size, and the variation in material type and description (see Kearsey *et al.* 2015 for lithological descriptions), it is concluded that the distribution of hydraulic conductivity within the model domain can be based upon the previously simulated lithology properties.

3. Stochastic modelling

Grid-based conditional simulation was used to distribute the hydraulic conductivity data through a model domain, using the lithologically-attributed grid described by Kearsey *et al.* (2015). It would be equally possible to utilise unconstrained model volumes or lithostratigraphic models should lithological models be unavailable or deemed to be less appropriate for a given application. In this case, lithology was considered to be more suitable for constraining hydraulic conductivity distribution than lithostratigraphy, due to the intra-formational lithological variability inherent within the superficial deposits of Glasgow. Therefore, lithological descriptions better represent the grain size distribution, and subsequently the hydraulic conductivity in the subsurface, than lithostratigraphic determinations. In addition, as described by Kearsey *et al.* (2015), the lithology models offer greater detail in terms of the geometry of individual litho-bodies and their geometrical relationships.

3.1 Input data and analysis

Derived hydraulic conductivity data were available from 603 boreholes within the model domain representing the superficial deposits, resulting in the data distribution shown by Figure 4. For many boreholes there were several measurements along their length. Data were provided in hydraulic

conductivity (K) units of metres per day (m/day), but have also been predicted by a transfer function to log₁₀ conductivity, for which summary statistics for the different lithologies are shown in Table 5.

Residuals for the data were calculated by subtracting the measured values from the mean values shown in Tables 4 and 5, depending on the lithology class from which the measurements were derived, with residuals generated for both the original and for log conductivity. The distribution of residuals for the log conductivity data has a symmetrical, normal-looking distribution (Figure 5), and on this basis is most suited to Gaussian simulation techniques. Therefore, the geostatistical analysis is based on log conductivity. The summary statistics for the log scale residuals (Table 6) do not suggest that there are any particular outliers in the data. The two skewness measures are in broad agreement, showing evidence of a mild positive skew, and the MAD (Mean Absolute Deviation) scale statistic, which provides a robust measure of the standard deviation, is very close to the standard deviation.

3.2 Spatial analysis

The program *gamv3m* from the GSLIB library (Deutsch & Journel, 1992) was used to obtain estimates of the empirical variogram from the data on conductivity. Estimates of the empirical variogram for four principal directions in the horizontal plane, with dip of zero and zero tolerance in Z (so that all comparisons are horizontal), were computed. Estimates were obtained with the conventional estimator of the variogram (Matheron 1962) and the GSLIB rodogram estimator. The latter was then rescaled to the Cressie-Hawkins (CH) robust estimator of the variogram (Cressie & Hawkins 1980). Exploratory variograms are shown in Figure 6. The CH variogram was included because it is more resistant to outlying observations than the conventional estimator. There is little evidence for anisotropy at shorter lags (up to about 2000 m), with the possible exception of direction 0, and there is also little difference between the two estimators. Therefore, isotropy (lack of dependence of the variogram on direction) is assumed in the horizontal plane.

In order to consider vertical variation, estimates of the variogram were then computed for a dip of 90°. The estimates showed mild spatial dependence down the borehole; therefore, models were considered with geometric anisotropy (isotropic in the horizontal plane, and an isotropy ratio, which is the ratio of the range of spatial dependence down the boreholes to the range in the horizontal plane). More information on the specification of directional dependence in variogram estimation is given by Deutsch & Journel (1992). Parameters for the variogram model were obtained by least squares fitting to the empirical variograms estimated with Matheron's estimator and the robust CH estimator. The fitted models are shown in Figure 7.

In order to obtain a final set of variogram parameters it was necessary to select between the model fitted to results from Matheron's estimator and the model fitted to results from the CH estimator. Cross-validation of the variograms was performed using GSLIB's *xvkt3dm* program. In cross validation, each observation in turn is withheld from the data set and predicted by ordinary kriging. The predicted value of each observation and the ordinary kriging variance of the prediction are obtained. If the variogram model is sound, then the ordinary kriging variance is the expected mean square error of the kriging prediction (Lark, 2002). For each observation in the cross validation we computed the Standardised Square Kriging Error (SSKE), which is the ratio of the squared error of the ordinary kriging predictor to the kriging variance. We then computed the mean and median of these values over all the data. Assuming normal kriging errors, the mean and median SSKE should be close to 1 and 0.455 respectively if the variogram gives a good description of the spatial dependence of the data, and reliable kriging variances (Lark 2002). The median is the more useful diagnostic, being less affected by outliers. In this case the mean and median SSKE for the Matheron estimator were 1.46 and 0.44 respectively. Those for the variogram obtained with the Cressie-Hawkins estimator were somewhat larger than expected (2.3 and 0.64 respectively), which may indicate a bias due to some non-normality of the underlying distribution. Therefore, on the criterion of selecting the model such

that the median SSKE is closest to 0.455, we prefer the Matheron variogram, and use this in the simulation of the residual log hydraulic conductivity. The variogram parameters used are given in Table 7.

3.3 Stochastic simulation

The residual log hydraulic conductivity data were used to condition simulations of the property onto the grid using the 'Reservoir Properties' workflow in GOCAD® 2009.4. Sequential Gaussian Simulation, or SGS (Deutsch & Journel 1992), was used to simulate 500 individual realisations of the property by variation of the random seed number, resulting in 500 unique realisations, one for each of the lithology simulations derived by Sequential Indicator Simulation by Kearsley *et al.* (2015). Data from ten percent of the boreholes were excluded from the simulations in order to provide a means of testing the workflow by comparison of the excluded data against the simulated values at those locations where validation data were present (Figure 4). For each realisation of the hydraulic conductivity residual, we assigned a single realisation of lithology by adding the corresponding lithology class means (as given in Table 5) to the residual property. This provided 500 realisations of the hydraulic conductivity. Each individual realisation provides an equally probable representation of the spatial distribution of hydraulic conductivity through the model domain conditioned to the simulated lithology. Subsequently these were back-transformed to the original hydraulic conductivity units of m/day.

The simulations all show a similar pattern of hydraulic conductivity distribution across the model area. Figures 8 and 9 show an example of one of the resulting simulations, alongside the corresponding simulation of lithology with which it is conditioned. It is clear that the highest hydraulic conductivities correspond to the River Clyde valley where the coarsest-grained lithologies predominate (Kearsley *et al.* 2015; Bianchi *et al.* 2015). The slope areas, where glacial tills are most common, exhibit lower hydraulic conductivities, which is intuitive given the clay-rich nature of the stiff clay diamicton that constitutes the major component of the Wilderness Till Formation (Kearsley *et al.* 2015). More locally, the structure is dependent on the distribution of individual litho-bodies in the corresponding lithology simulations (Figure 8).

These individual simulations may be useful for specific purposes such as in the development of groundwater models. However, the particular value of the stochastic simulation approach is that multiple realisations may be interrogated in order to produce 3D probability distributions for identifying where the hydraulic conductivity values are likely to fall within, or to exceed given values. An example is shown in Figure 10 where the probability of values exceeding the 75th percentile of the simulated values (0.3 m/day) is shown. This value is within the range of division between poor and moderate productivity aquifers of ~0.2–1 m/day for Scottish aquifers of 10–50 m thickness (Graham *et al.* 2010). The higher hydraulic conductivity values tend to be located along the present day Clyde valley, although relatively higher probabilities of encountering moderately productive aquifers also exist in topographic depressions to the N and S of the study area. Some of these might be related to a late glacial marine flooding event and its subsequent retreat, where relative sea level rose to ~40 m above Ordnance Datum (Peacock 2003), leading to the deposition of coarse grained sediments in some topographic depressions at higher elevations.

A split-sample validation test was performed in order to assess the effectiveness of the stochastic modelling approach, with data from 10% of the boreholes excluded from the simulations for use as validation points. For a non-spatial model where the hydraulic conductivity of the validation point locations is predicted as the mean log₁₀ hydraulic conductivity of the dataset as a whole, the Mean Squared Error (MSE) between this estimate and the observed values is 1.36 (log₁₀ m/day)². If the mean log₁₀ hydraulic conductivity is estimated based on the lithology of the validation points, the MSE is reduced by 60%. Use of the spatial model presented here to estimate the hydraulic

conductivity, reduces the remaining squared errors by a further 34% at the validation point locations, suggesting that i) lithology exerts an important control on the distribution of hydraulic conductivity in Glasgow, and ii) that the stochastic modelling technique presented here more accurately predicts the distribution of hydraulic conductivity than simple models based on bulk-attribution of lithological models.

4. Discussions and conclusions

For the first time, an extensive hydraulic conductivity dataset for the superficial deposits across central Glasgow has been derived from geotechnical data acquired from site investigation boreholes. The method of MacDonald *et al.* (2012) has been used to generate the hydraulic conductivity data from PSD and SSD data. A range of alternative established formulae was also tested, but the data distribution of results from the MacDonald formula was found to match more closely the observed distribution of data from the limited number of in situ measurements, and was found to be the most appropriate to use in terms of the grain size application ranges of the different formulae. These data have been used to populate a 3D cellular model of the superficial deposits across central Glasgow with simulated hydraulic conductivity values. 500 unique realisations were produced, conditioned by previously simulated lithological distributions after Kearsley *et al.* 2015.

The simulations indicate that the distribution of hydraulic conductivity values is strongly controlled by lithology, with higher values prevailing along the axis of the Clyde valley and within topographic lows where coarser grained deposits are more prevalent. The individual simulations are likely to prove difficult to implement explicitly within numerical groundwater models due to the large number of grid nodes and the requirement for upscaling (Nøtinger *et al.* 2005). However, they are useful in obtaining a conceptual understanding of the distribution of flow properties across the region. Validation of the modelling technique was achieved by a split-sample validation test against a proportion of the hydraulic conductivity data excluded from the modelling workflow. This showed that as a predictive tool, the stochastic modelling results performed better by comparison with non-spatial models or models based-on bulk attribution.

This relationship between lithology and hydraulic conductivity is particularly important for understanding the variability of groundwater flow regimes in urban areas where the geology is largely hidden by development. Glasgow has a history of anthropogenic pollution and, in particular, buried wastes from historic heavy industry, and tracking such pollution is problematic. Improved understanding of the 3D geometry of potentially conductive aquifer units within the city will allow improved risk assessments for managing the legacy of pollutants. Previous conventional 2D geological modelling, or even more recent deterministic 3D modelling, does not provide sufficiently descriptive information to adequately discriminate the threats posed by the remobilisation of specific wastes. The techniques presented here provide a possible alternative, which may allow more locally focussed models to be developed.

We demonstrate that geotechnical data can be used to produce a large and robust hydraulic conductivity dataset suitable for modelling and analysis of the distribution of hydraulic conductivity within the shallow subsurface across an area of 100 km² in central Glasgow [55.813°N–55.903°N; 4.157°W–4.319°W]. Stochastic attribution is achieved using a pre-existing voxelated (or geocellular) model representation of the superficial geology of Glasgow. Kearsley *et al.* (2015) applied stochastic modelling techniques to generate models of the lithological variation within the superficial deposits in Glasgow, and those models form the foundation for this modelling study. The city of Glasgow is particularly suitable as a pilot study area to assess the suitability and robustness of the methodology as the underlying superficial deposits are highly complex and heterogeneous, and there are relatively few *in situ* hydraulic conductivity data available. Validation of the stochastic 3D modelling technique was achieved by withholding 10% of the hydraulic conductivity data from the stochastic attribution so that

it could later be compared to the modelled predictions. To the knowledge of the authors, this is the first account of a stochastic modelling approach aimed at studying the hydraulic conductivity of the shallow subsurface on a city-wide scale.

By developing a 3D model of the hydraulic conductivity of complex superficial deposits underlying a large city, we have shown that it is possible to understand the likely flow paths of groundwater in a complex sequence dominated by glacial, marine and estuarine deposits. This model will potentially facilitate an improved understanding of groundwater flow in 3D, reducing the spatial uncertainty of hydraulic parameters in groundwater process models.

The methodology applied here can be applied in any region where there is a good quantity and distribution of geotechnical data, which adequately characterises the variation of material properties, specifically particle size and relative density descriptions. While here applied to the central Glasgow area, it would also be of particular use in other urban areas in the UK and worldwide where superficial deposits are present and where the characterisation of controls on groundwater processes are important. A pre-requisite is that detailed geological models are available to adequately describe the structure of the urban subsurface, providing a framework for property modelling.

5. Acknowledgements

Tim Kearsley and Ben Marchant are thanked for providing useful discussions on various aspects of this study. This paper was funded by NERC National Capability funding, and is published with the permission of the Executive Director, British Geological Survey (NERC).

6. References

- Angulo-Jaramillo, R., Vandervaere, J.P., Roulier, S., Thony, J.L., Gadet, J.P. & Vauclin, M. 2000. Field measurements of soil surface hydraulic properties by disc and ring infiltrometers. A review and recent developments. *Soil & Tillage Research* **55**, 10–29.
- Barahona-Palomo, M., Riva, M., Sanchez-Vila, X., Vasquez-Sune, E. & Guadagnini, A. 2011. Quantitative comparison of impeller-flowmeter and particle-size-distribution techniques for the characterization of hydraulic conductivity variability. *Hydrogeology Journal* **19**, 603–612.
- Bear, J. 1972. *Dynamics of Fluids in Porous Media*. Dover Publications. ISBN 0-486-65675-6.
- Bianchi, M., Kearsley, T. & Kingdon, A. 2015. Integrating deterministic lithostratigraphic models in stochastic realizations of subsurface heterogeneity. Impact on predictions of lithology, hydraulic heads and groundwater fluxes. *Journal of Hydrology* **531** (3), 557–573.
- Bonsor, H.C., Bricker, S.H., Ó Dochartaigh, B.É. & Lawrie, K.I.G. 2010. Project Progress Report 2010–11: Groundwater Monitoring in Urban Areas – A Pilot Study in Glasgow, UK. *British Geological Survey Open Report*, IR/10/087, 63 pp.
- Bricker, S.H. & Bloomfield, J.P. 2014. Controls on the basin-scale distribution of hydraulic conductivity of superficial deposits: a case study from the Thames Basin, UK. *Quarterly Journal of Engineering and Hydrogeology* **47** (3), 223–236.
- British Standards Institution. 1990. BS 1377-2 Methods of test for soils for civil engineering purposes. Classification tests.
- British Standards Institution. 1999. BS 5930 Code of practise for site investigations.
- Browne, M.A.E. & McMillan, A.A. 1989. Quaternary geology of the Clyde valley. *British Geological Survey Research Report*, SA/89/1, 63 pp.

- Brown, E.J., Rose, J., Coope, R.G. & Lowe, J.J. 2007. An MIS 3 age organic deposit from Balglass Burn, central Scotland: palaeoenvironmental significance and implications for the timing of the onset of the LGM ice sheet in the vicinity of the British Isles. *Journal of Quaternary Science* **22** (3), 295–308.
- Campbell, S.D.G., Merritt, J.E., Ó Dochartaigh, B.E., Mansour, M., Hughes, A.G., Fordyce, F.M., Entwistle, D.C., Monaghan, A.A. & Loughlin, S.C. 2010. 3D geological models and their hydrogeological applications: supporting urban development: a case study in Glasgow–Clyde, UK. *Zeitschrift der Deutschen Gesellschaft für Geowissenschaften* **161** (2), 251–262.
- Carrier, W.D. III. 2003. Goodbye, Hazen; Hello, Kozeny-Carman. *Journal of Geotechnical and Geoenvironmental Engineering* **129** (11), 1054–1056.
- Chapuis, R.P. 2004. Predicting the saturated hydraulic conductivity of sand and gravel using effective diameter and void ratio. *Canadian Geotechnical Journal* **41**, 787–795.
- Chilton, P.J. (ed.) 1999. *Groundwater in the Urban Environment*. Balkema, Rotterdam.
- Cressie, N. & Hawkins, D.M. 1980. Robust estimation of the variogram. *Journal of the International Association for Mathematical Geology* **12**, 115–125.
- Culshaw, M.G. 2005. From concept towards reality: developing the attributed 3D geological model of the shallow subsurface. *Quarterly Journal of Engineering Geology and Hydrogeology* **38** (3), 231–284.
- Cuthbert, M.O., Mackay, R., Tellam, J.H. & Barker, R.D. 2009. The use of electrical resistivity tomography in deriving local scale models of recharge through superficial deposits. *Quarterly Journal of Engineering Geology and Hydrogeology* **42** (2), 199–209.
- Deutsch, C.V. & Journel, A.G. 1992. *Geostatistical Software Library and User's Guide*. New York, ed. Oxford University Press, 340 pp.
- Elrick, D.E., Reynolds, W.D. & Tan, K.A. 1989. Hydraulic conductivity measurements in the unsaturated zone using improved well analyses. *Groundwater Monitoring & Remediation* **9** (3), 184–193.
- Finlayson, A. 2012. Ice dynamics and sediment movement: late glacial cycle, Clyde basin, Scotland. *Journal of Glaciology* **58**, 487–500.
- Finlayson, A., Merritt, J., Browne, M., Merritt, J., McMillan, A. & Whitbread, K. 2010. Ice sheet advance, dynamics, and decay configurations: evidence from west central Scotland. *Quaternary Science Reviews* **29** (7–8), 969–988.
- Fordyce, F.M., Ó Dochartaigh, B.É., Bonsor, H.C., Ander, E.L., Graham, M.T., McCuaig, R. & Lovatt, M.J. *This volume*. Assessing threats to shallow groundwater quality from soil pollutants in Glasgow, UK: development of a new screening tool.
- Freeze, R.A. & Cherry, J.A. 1979. *Groundwater*. Prentice-Hall, Englewood Cliffs, NJ. 604pp.
- Gogu, R.C. & Dassargues, A. 2000. Current trends and future challenges in groundwater vulnerability assessment using overlay and index methods. *Environmental Geology* **39** (6), 549–559.
- Graham, M., Ball, D., Ó Dochartaigh, B.É. & MacDonald, A. 2009. Using transmissivity, specific capacity and borehole yield data to assess the productivity of Scottish aquifers. *Quarterly Journal of Engineering Geology and Hydrogeology* **42** (2), 227–235.
- Hazen, A. 1892. Some physical properties of sands and gravels, with special reference to their use in filtration. 24th Annual Report, Massachusetts State Board of Health Document **34**, 539–556.

- Jacobi, R.M., Rose, J., MacLeod, A. & Higham, T.F.G. 2009. Revised radiocarbon ages on woolly rhinoceros (*Coelodonta antiquitatis*) from western central Scotland: significance for timing the extinction of woolly rhinoceros in Britain and the onset of the LGM in central Scotland. *Quaternary Science Reviews* **28** (25–26), 2551–2556.
- Jones, L. 1993. A comparison of pumping and slug tests for estimating the hydraulic conductivity of unweathered Wisconsin age till in Iowa. *Ground Water* **31**, 896–904.
- Kearsey, T., Williams, J., Finlayson, A., Williamson, P., Dobbs, M., Marchant, B., Kingdon, A. & Campbell, D. 2015. Testing the application and limitation of stochastic simulations to predict the lithology of glacial and fluvial deposits in Central Glasgow, UK. *Engineering Geology* **187**, 98–112.
- Kolterman, C.E. & Gorelick, S.M. 1995. Fractional packing model for hydraulic conductivity derived from sediment mixtures. *Water Resources Research* **31**, 3283–3297.
- Labolle, E.M. & Fogg, G.E. 2001. Role of molecular diffusion in contaminant migration and recovery in an alluvial aquifer system. *Transport in Porous Media* **42**, 155–179.
- Lark, R.M. 2002. Modelling complex soil properties as contaminated regionalized variables. *Geoderma* **106**, 171–188.
- Lee, J.R., Busschers, F.S. & Sejrup, H.P. 2012. Pre-Weichselian Quaternary glaciations of the British Isles, The Netherlands, Norway and adjacent marine areas south of 68°N: implications for long-term ice sheet development in northern Europe. *Quaternary Science Reviews* **44**, 213–228.
- Lerner, D.N. 2002. Identifying and quantifying urban recharge: a review. *Hydrogeology Journal* **10**, 143–152.
- Lewis, M.A., Cheney, C.S. & Ó Dochartaigh, B.É. 2006. Guide to Permeability Indices. *British Geological Survey Commissioned Report*, CR/06/160N, 29 pp.
- MacCormack, K.E., Maclachlan, J.C. & Eyles, C.H. 2005. Viewing the subsurface in three-dimensions: initial results of modelling the Quaternary sedimentary infill of the Dundas Valley, Hamilton, Ontario. *Geosphere* **1**, 23–31.
- MacDonald, A.M., Maurice, L., Dobbs, M.R., Reeves, H.J. & Auton, C.A. 2012. Relating *in situ* hydraulic conductivity, particle size and relative density of superficial deposits in a heterogeneous catchment. *Journal of Hydrology* **434–435**, 130–141.
- MacDonald, A.M., Lapworth, D.J., Hughes, A.G., Auton, C.A., Maurice, L., Finlayson, A. & Goody, D.C. 2014. Groundwater, flooding and hydrological functioning in the Findhorn floodplain, Scotland. *Hydrology Research* **45** (6), 755–773.
- Marchant, A.P., Banks, V.J., Royse, K.R. & Quigley, S.P. 2013. The development of a GIS methodology to assess the potential for water resource contamination due to new development in the 2012 Olympic Park site, London. *Computer and Geosciences* **51**, 206–215.
- Matheron, G. 1962. *Traité de Géostatistique Appliqué*, Tome 1. Memoir du Bureau de Recherches Géologiques et Minières, Paris.
- Maupin, M.A. & Barber, N.L. 2005. Estimated withdrawals from principal aquifers in the United States, 2000. U.S. Geological Survey Circular 1279, 46pp.
- McKay, L.D., Cherry, J.A. & Gillham, R.W. 1993. Field experiments in a fractured clay till: 1. Hydraulic conductivity and fracture aperture. *Water Resources Research* **29** (4), 1149–1162.
- Merritt, J.E., Monaghan, A.A., Entwisle, D.C., Hughes, A.G., Campbell, S.D.G. & Brown, M.A.E. 2007. 3D attributed models for addressing environmental and engineering geoscience problems in areas of urban regeneration: a case study in Glasgow, UK. *First Break* **25**, 79–84.

- Millham, N.P. & Howes, B.L. 1995. A comparison of methods to determine K in shallow coastal aquifer. *Ground Water* **33**, 49–57.
- Misstear, B.D.R., Brown, L. & Johnston, P. 2009. Estimation of groundwater recharge in a major sand and gravel aquifer in Ireland using multiple approaches. *Hydrogeology Journal* **17**, 693–706.
- Mondol, N.H., Bjorlykke, K., Jahren, J. & Hoeg, K. 2007. Experimental mechanical compaction of clay mineral aggregates – changes in physical properties of mudstones during burial. *Marine and Petroleum Geology* **24**, 289–311.
- Nøtinger, B., Artus, V. & Zargar, G. 2005. The future of stochastic and upscaling methods in hydrogeology. *Hydrogeology Journal* **13**, 184–201.
- Ó Dochartaigh, B.É., Bonsor, H. & Bricker, S. *This volume*. The Quaternary groundwater system in Glasgow, UK.
- Odong, J. 2007. Evaluation of empirical formulae for determination of hydraulic conductivity based on grain-size analysis. *The Journal of American Science* **3** (3), 54–60.
- Peacock, J.D. 2003. Late Quaternary sea level change and raised marine deposits of the Western Highland Boundary: a) the deglaciation of the lower Clyde valley: a brief review. In Evans, D.J.A. (ed.) *The Quaternary of the Western Highland Boundary: Field guide*. Quaternary Research Association, London, 30–41.
- Renard, P. 2005. The future of hydraulic tests. *Hydrogeology Journal* **13**, 259–262.
- Schirmer, M., Leschik, S. & Musolff, A. 2013. Current research in urban hydrogeology – a review. *Advances in Water Resources* **51**, 280–291.
- Schlichter, C.S. 1899. Theoretical Investigation of the Motion of Ground Waters. U.S. Geological Survey 19th Annual Report part 2, 295–384.
- Seelheim, F. 1880. Methoden zur Bestimmung der Durchlässigkeit des Bodens. *Zeitschrift für analytische Chemie* **19**, 387–402.
- Self, S., Entwistle, D. & Northmore, K. 2012. The structure and operation of the BGS National Geotechnical Properties Database. Version 2. *British Geological Survey Internal Report*, IR/12/056, 68 pp.
- Song, J.X., Chen, X.H., Cheng, C., Wang, D.M., Lackey, S. & Xu, Z.X. 2009. Feasibility of grain-size analysis methods for determination of vertical hydraulic conductivity of streambeds. *Journal of Hydrology* **375**, 428–437.
- Turner, R.J., Mansour, M.M., Dearden, R., Ó Dochartaigh, B.É., Hughes, A.C. 2015. Improved understanding of groundwater flow in complex superficial deposits using three-dimensional geological-framework and groundwater models: an example from Glasgow, Scotland (UK). *Hydrogeology Journal* **23** (3), 493–506.
- Vienken, T. & Dietrich, P. 2011. Field evaluation of methods for determining hydraulic conductivity from grain size data. *Journal of Hydrology* **400**, 58–71.
- Vukovic, M. & Soro, A. 1992. Determination of Hydraulic Conductivity of Porous Media from Grain-Size Composition. Water Resources Publications, Littleton, Colorado. 54 pp.
- Watson, C., Richardson, J., Wood, B., Jackson, C. & Hughes, A. 2015. Improving geological and process model integration through TIN to 3D grid conversion. *Computers & Geosciences* **82**, 45–54.
- Woods-Ballard, B., Kellagher, R., Martin, P., Jeffries, C., Bray, R. & Shaffer, P. 2007. CIRIA C697. The SUDS manual. CIRIA, London.

Figure 1 a) Location of study area, showing River Clyde and major roadways, and b) superficial geology map after Merritt *et al.* (2007).

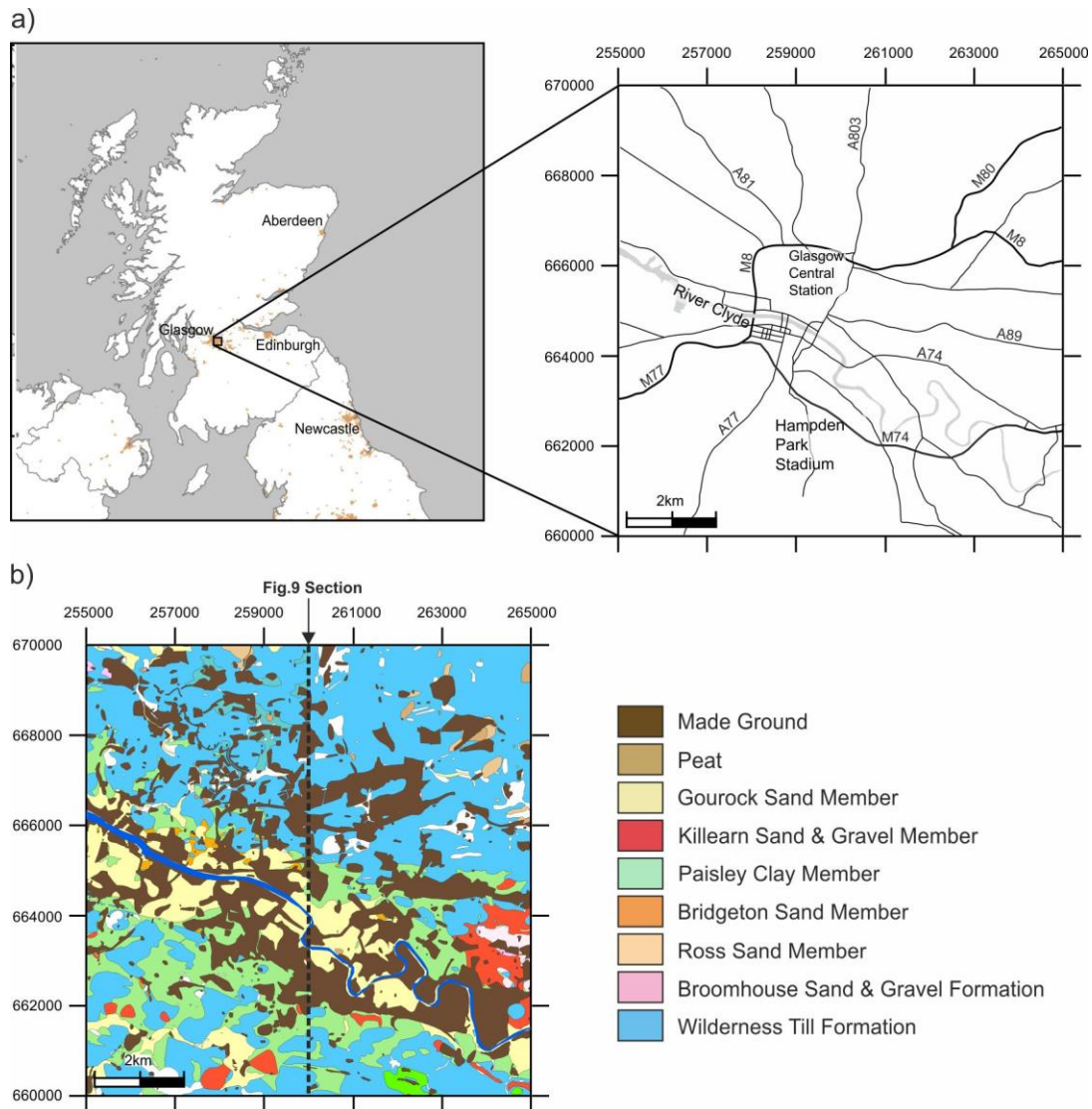


Figure 2 a) Box and whisker plots for all data, and b)–f) by lithostratigraphic formation. *In situ* hydraulic conductivity data (Bonsor *et al.* 2010; Ó Dochartaigh *et al.* this volume) are also shown for comparison within individual lithostratigraphic units.

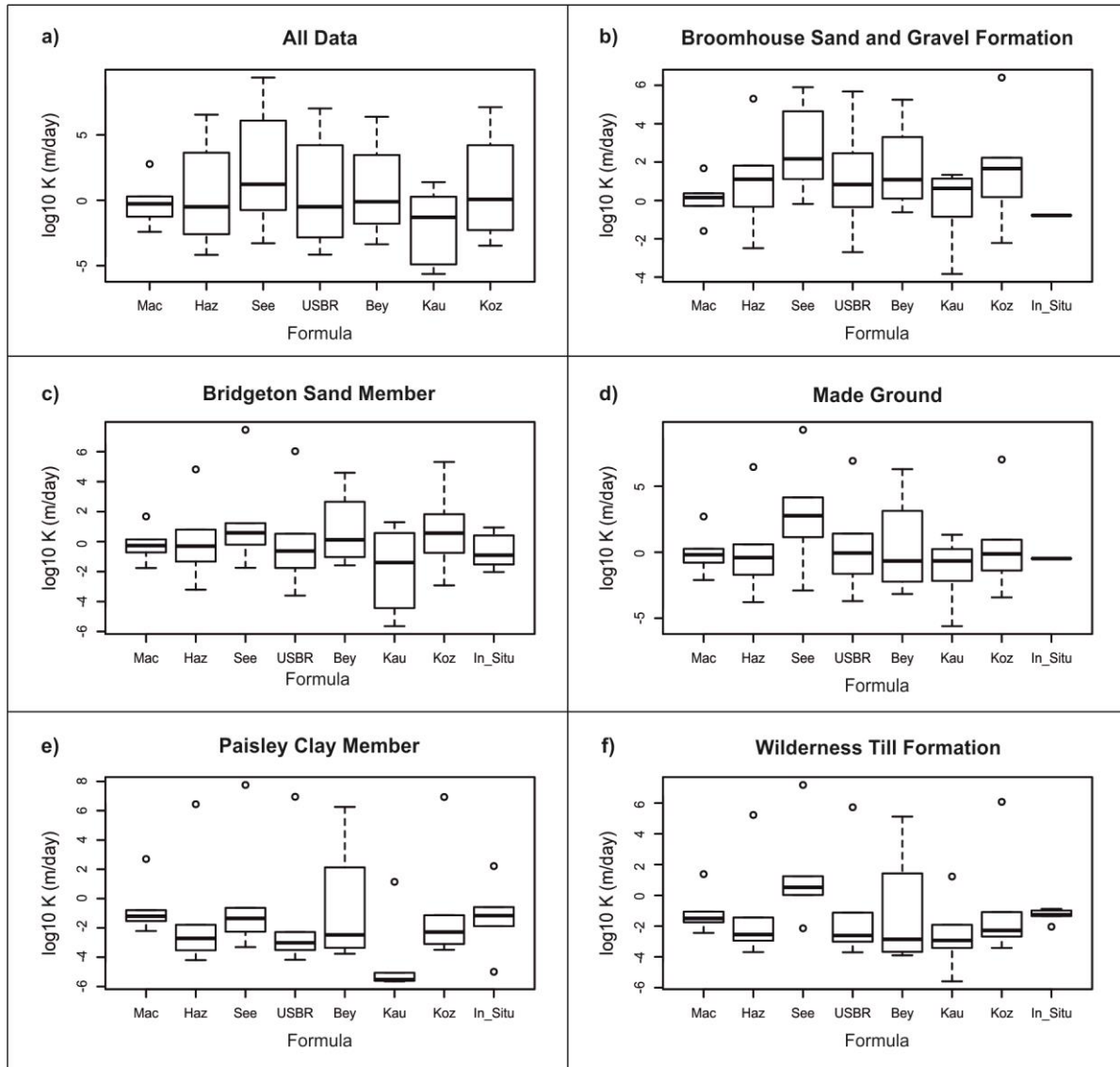


Figure 3 a) Cumulative frequency plots comparing derived and *in situ* measured hydraulic conductivity data, and histograms showing distribution of hydraulic conductivity data b) derived using MacDonald formula, and c) measured from *in situ* testing.

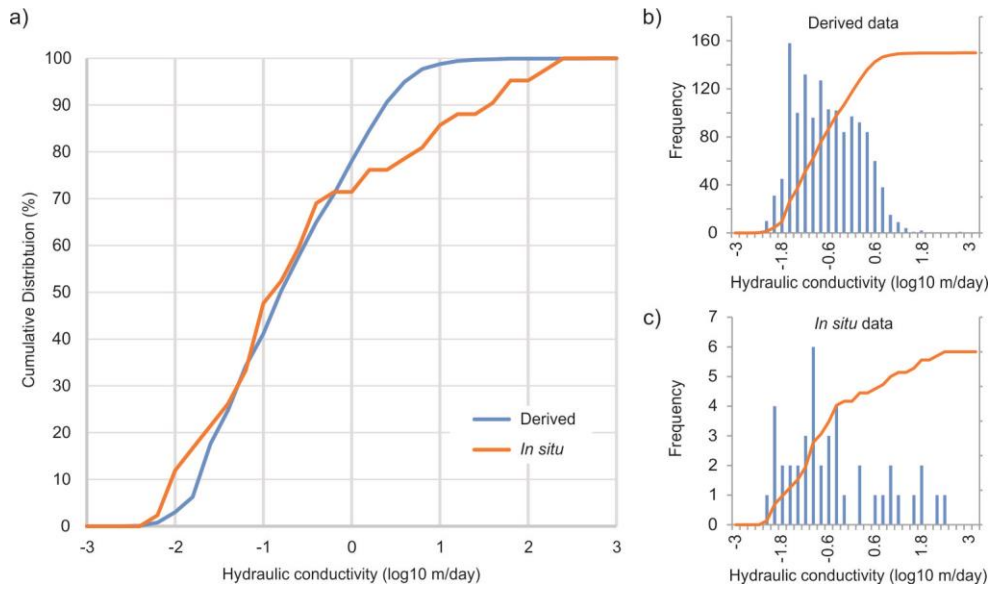


Figure 4 Distribution of boreholes for which hydraulic conductivity data are available. The red points are those boreholes where data has been excluded from the simulations to enable split-sample validation of the technique.

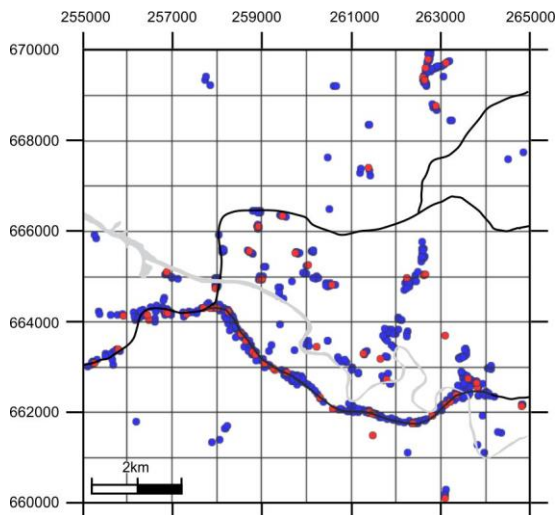


Figure 5 Histogram showing the distribution of residual log hydraulic conductivity data.

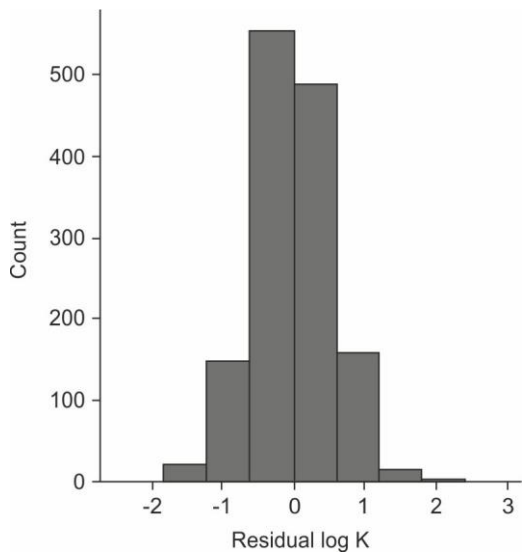


Figure 6 Exploratory variogram estimates of the residual log hydraulic conductivity for four principal directions, 0 being N-S. Matheron estimates are solid symbols while Cressie-Hawkins are open.

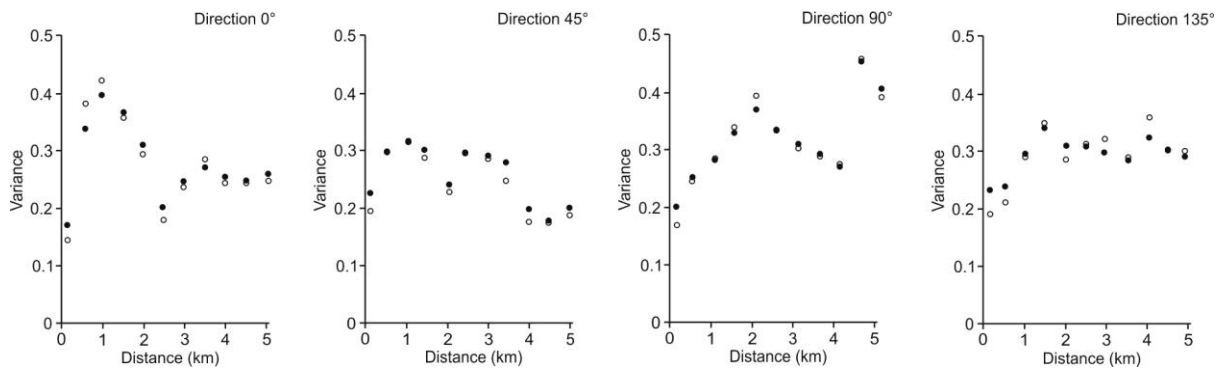


Figure 7 Fitted variogram models for a) horizontal and b) vertical directions. Matheron estimates are solid symbols while Cressie-Hawkins are open.

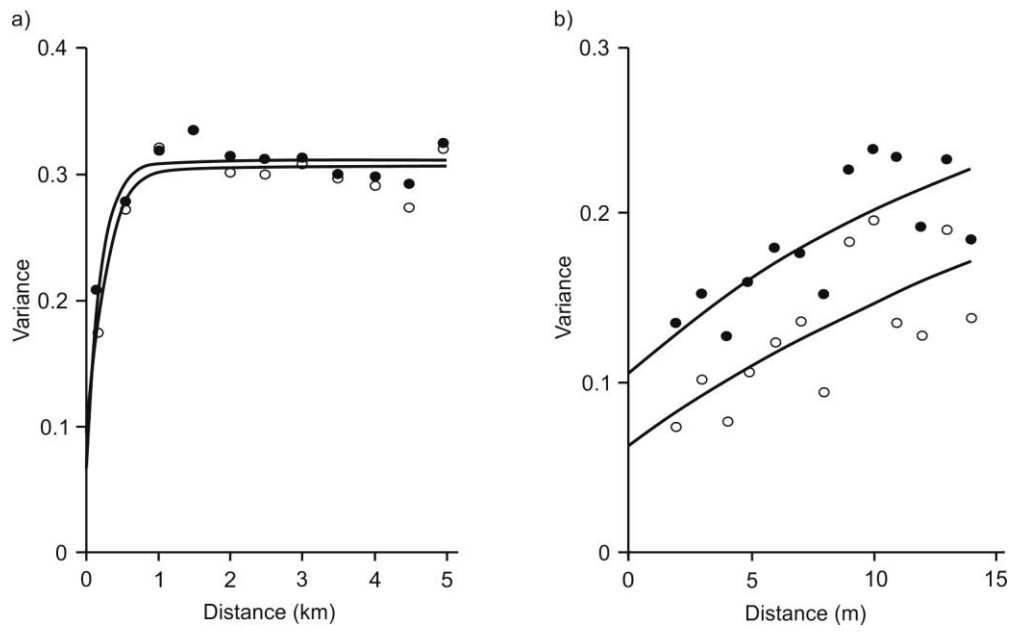


Figure 8 a) A single realisation of the distribution of hydraulic conductivity across the model domain and b) the corresponding simulation of lithology. Note the distribution is dependent on both the gross distribution of lithofacies, while locally the structure is controlled by the distribution of simulated litho-bodies.

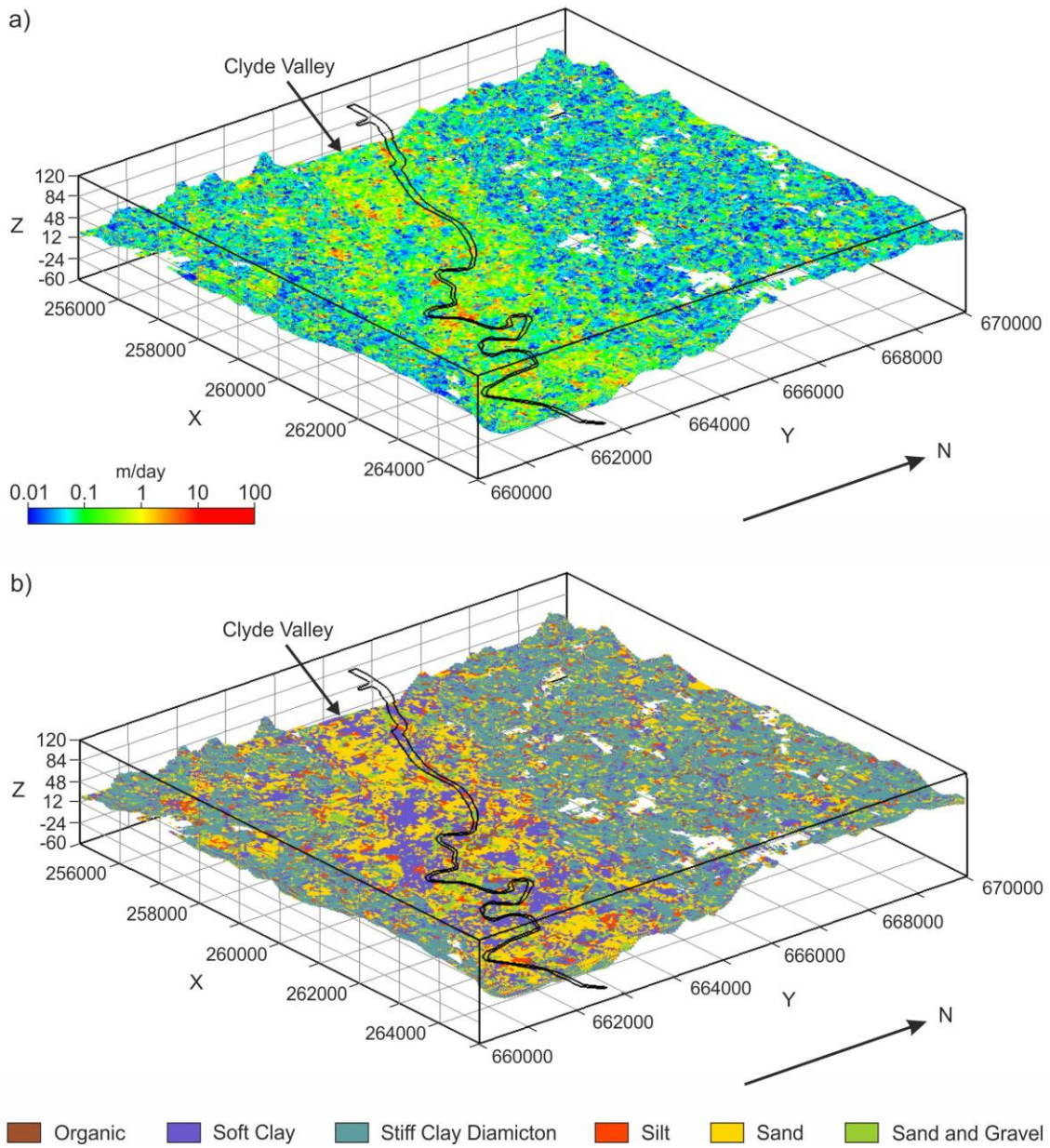


Figure 9 Cross-section showing distribution of a) hydraulic conductivity from a single simulation and b) the corresponding simulation of lithology. Location of section shown on Figure 1b. The black line represents the ground surface.

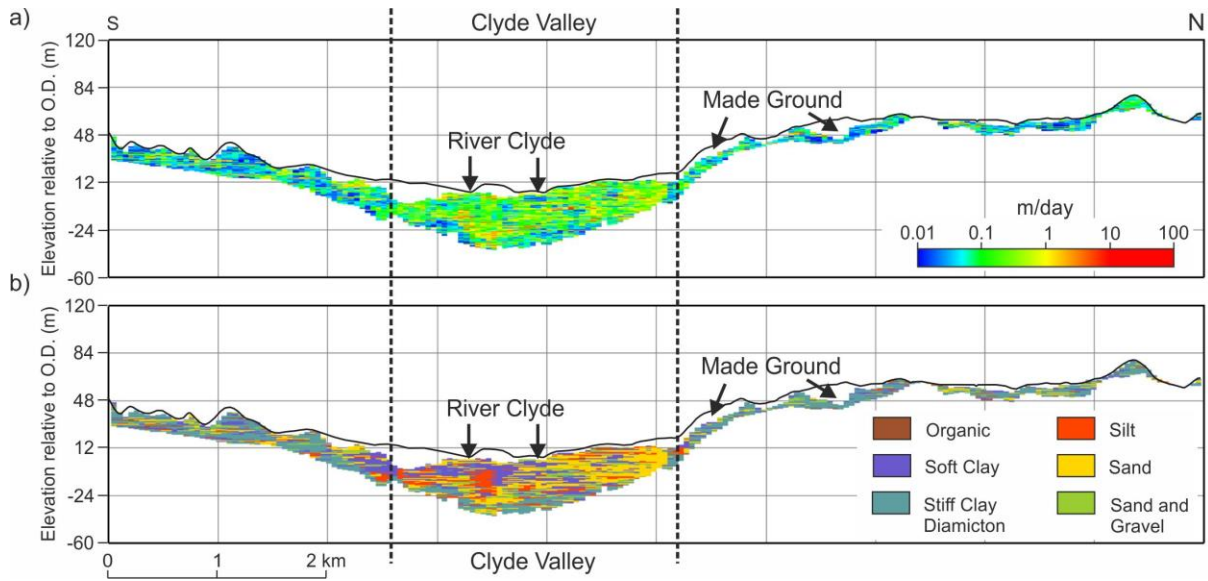
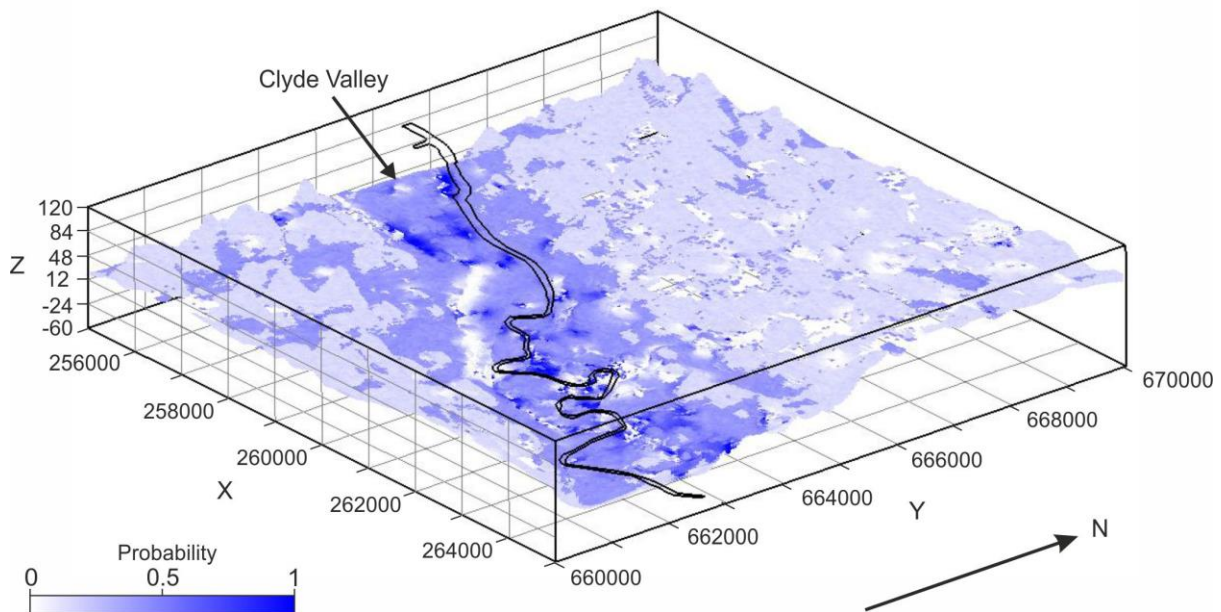


Figure 10 Probability of hydraulic conductivity exceeding 0.3 m/day, calculated from 500 individual simulations.



Formula	Formula derivation and application range restrictions	Criteria used for assessment of application range	Data within range (%)
MacDonald	Derived from lithologies with hydraulic conductivity ranging from 0.001–>40 m/day (MacDonald <i>et al.</i> 2012).	$d_{10} = 0.001\text{--}0.715$ mm	82.6
Hazen	Derived from laboratory based experiments on relatively uniform sand. Considered useful for fine sand to gravel range, provided the sediment has a uniformity coefficient less than 5 and effective grain size between 0.1 and 3 mm (Odong 2007).	$d_{10} = 0.1\text{--}3.0$ mm $d_{60}/d_{10} < 5$	3.5
Seelheim	Derived from laboratory-based experiments on sand, clay and elutriated chalk (Seelheim 1880). Application considered to be limited to samples that do not contain significant quantities of gravel.	<25% of sample >2.00 mm	70
USBR	Applicable to relatively uniform medium-grained sands (Vuković & Soro 1992).	>50% of sample 0.5–2.0 mm $d_{60}/d_{10} < 5$	0.7
Beyer	Derived using field-based pumping tests. Considered useful for materials with heterogeneous distributions and poorly sorted grains with uniformity coefficient between 1 and 20, and effective grain size between 0.06 mm and 0.6 mm (Vuković & Soro 1992; Odong, 2007).	$d_{10} = 0.06\text{--}0.6$ mm $d_{60}/d_{10} = 1\text{--}20$	10.6
Kaubisch	Derived from permeameter tests. Limited grain size application (Vienken & Dietrich 2011).	10–60% of sample <0.06mm	47
Kozeny-Carman	Not applicable for coarse-grained deposits where the $d_{10} > 3$ mm. Also recommended that it not be used for very fine materials where electrochemical reactions may occur between the grain particles and water (Carrier 2003).	$d_{10} < 3.0$ mm <25% of sample <0.063 mm	37

Table 1 Application ranges for different formulae used to derive hydraulic conductivity. The data within range (%) column shows the percentage of the available data from Glasgow that falls within the application ranges given.

	MacDonal d (K m/day)	Hazen (K m/day)	Seelheim (K m/day)	USBR (K m/day)	Beyer (K m/day)	Kaubisch (K m/day)	Kozeny- (K m/day)
Max	5.15 x 10 ²	2.98 x 10 ⁶	1.99 x 10 ⁹	8.85 x 10 ⁶	2.04 x 10 ⁶	2.16 x 10 ¹	1.10 x 10 ⁷
Q75	1.03 x 10 ⁰	1.99 x 10 ⁰	5.57 x 10 ¹	2.55 x 10 ⁰	7.03 x 10 ⁻¹	7.57E-01	7.38 x 10 ⁰
Median	2.26 x 10 ⁻¹	4.06 x 10 ⁻²	3.95 x 10 ¹	3.26 x 10 ⁻²	1.49 x 10 ⁻²	2.75 x 10 ⁻³	1.51 x 10 ⁻¹
Q25	5.10 x 10 ⁻²	2.37 x 10 ⁻³	1.63 x 10 ⁻¹	1.35 x 10 ⁻³	4.03 x 10 ⁻⁴	1.19 x 10 ⁻⁵	4.83 x 10 ⁻³
Min	3.56 x 10 ⁻³	6.25 x 10 ⁻⁵	4.82 x 10 ⁻⁴	6.54 x 10 ⁻⁵	-1.61E x 10 ¹	2.22 x 10 ⁻⁶	3.16 x 10 ⁻⁴

Table 2 Summary table showing derived hydraulic conductivity for the different formulae for all samples. Beyer produced negative values where $d_{60}/d_{10} > 500$.

Lithostrat	BHSE (K m/day)	BRON (K m/day)	GUF (K m/day)	KARN (K m/day)	LAW (K m/day)	MGR (K m/day)	PAIS (K m/day)	WITI (K m/day)
No. Samples	50	319	339	49	24	497	569	415
Mean	3.686	1.178	2.050	1.342	2.683	3.730	1.077	0.351
Geometric Mean	1.080	0.519	0.896	0.698	0.333	0.555	0.078	0.047
Max	47.363	47.146	20.280	9.435	53.072	515.428	499.949	24.537
Q75	2.363	1.402	2.732	1.434	0.681	1.809	0.160	0.087
Median	1.419	0.541	1.027	0.738	0.487	0.643	0.062	0.032
Q25	0.520	0.190	0.334	0.366	0.066	0.160	0.029	0.018
Min	0.026	0.017	0.010	0.033	0.026	0.008	0.006	0.004

Table 3 Summary table showing the hydraulic conductivity in units of m/day derived using the MacDonald formula, for the different lithostratigraphic formations. BHSE = Broomhouse Sand and Gravel Formation, BRON = Bridgeton Sand Member, GUF = Gourock Sand Member, KARN = Killearn Sand and Gravel Member, LAW = Law Formation (now Clyde Valley Formation), MGR = Made Ground, PAIS = Paisley Clay Member and WITI = Wilderness Till Formation.

	Organic	Soft Clay	Stiff Clay Diamicton	Silt	Sand	Sand and Gravel
No. of Samples	1	319	253	106	548	164
Mean	0.31	0.16	0.10	0.71	0.93	4.06
Median	0.31	0.04	0.03	0.11	0.47	2.36
St Dev	-	0.52	0.43	5.14	1.13	6.04
Skewness	-	8.36	13.28	10.25	2.31	4.03
Octile Skew	-	0.72	0.74	0.66	0.64	0.43
Mean Absolute Deviation	-	0.06	0.04	0.16	0.70	3.50

Table 4 Summary statistics determined from raw hydraulic conductivity data (K), units are m/day.

	Organic	Soft Clay	Stiff Clay Diamicton	Silt	Sand	Sand and Gravel
No. of samples	1	319	253	106	548	164
Mean	-0.51	-1.27	-1.48	-0.88	-0.35	0.27
Median	-0.51	-1.36	-1.58	-0.96	-0.33	0.37
St Dev	-	0.52	0.50	0.50	0.57	0.61
Skewness	-	1.04	1.13	1.61	-0.22	-0.67
Octile Skew	-	0.26	0.25	0.19	-0.02	-0.25
Mean Absolute Deviation	-	-2.02	-2.35	-1.39	-0.49	0.55

Table 5 Summary statistics determined from hydraulic conductivity data transposed to Log to base 10.

Mean	9.0033 ⁻⁰⁶
Median	-0.03
St Dev	0.54
Skewness	0.25
Octile Skew	0.10
Mean Absolute Deviation	0.56

Table 6 Summary statistics for the residual log hydraulic conductivity values in units of log₁₀ m/day.

Variogram type	Exponential
Nugget variance, C0	0.106
Spatial variance, C1 (sill variance = C0+C1)	0.206
Distance parameter (horizontal range)	215.5 m
Distance parameter (vertical range)	15.78 m

Table 7 Variogram parameters used in the simulation of the residual bulk density. The anisotropy ratio is 0.07324.