

Open Research Online

The Open University's repository of research publications and other research outputs

A Manufacturing Sector's Experience of integrating EPD alongside product, management system and responsible sourcing certification for public procurement

Conference or Workshop Item

How to cite:

Brankley, Lee; Tugrul, Ayhan; Anderson, Jane and Knight, David (2017). A Manufacturing Sector's Experience of integrating EPD alongside product, management system and responsible sourcing certification for public procurement. In: LCM 2017: 8th International Conference on Life Cycle Management, 4-7 Sep 2017, Luxembourg.

For guidance on citations see [FAQs](#).

© [\[not recorded\]](#)

Version: Version of Record

Link(s) to article on publisher's website:

<http://lcm-conferences.org/session/using-lca-and-epd-in-public-procument-discussion-session/>

Copyright and Moral Rights for the articles on this site are retained by the individual authors and/or other copyright owners. For more information on Open Research Online's data [policy](#) on reuse of materials please consult the policies page.

oro.open.ac.uk



A Manufacturing Sector's Experience of integrating EPD alongside product, management system and responsible sourcing certification for public procurement

Using LCA and EPD in Public Procurement

LCM 2017. 3-6 September 2017 in Luxembourg

Ayhan Tugrul – General Manager, CARES

PRESENTATION OUTLINE

- Introduction to CARES
- Sustainable Constructional Steels Scheme
- Role of EPD's and responsible sourcing
- Use in public procurement
- Lessons Learnt





INTRODUCTION

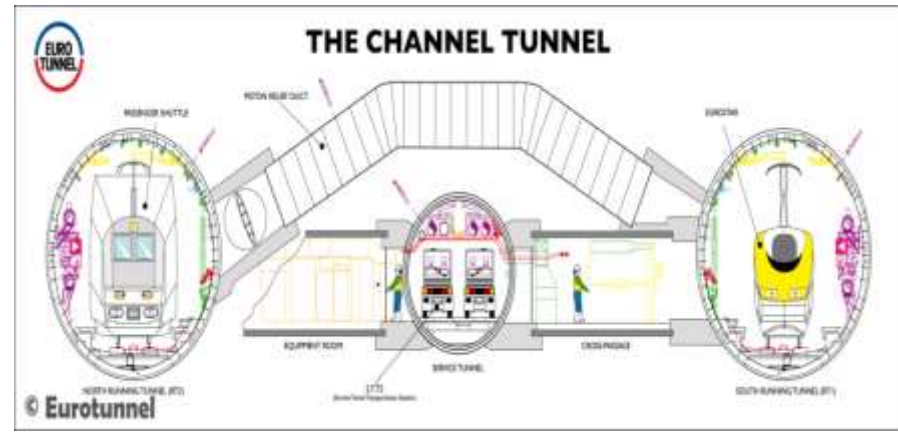
- Independent, not-for-profit certification body, established in 1983
- Offers certification schemes for constructional steels companies
 - Management system certification
 - Product Certification
 - CE Marking
 - Sustainable Constructional Steels Scheme

Its aim is to provide confidence to the users, purchasers and specifiers of constructional steels through a regime of 3rd party regulation, testing and inspection





MAJOR PROJECTS AND RECOGNITIONS





THE CARES SUSTAINABLE CONSTRUCTIONAL STEEL (SCS) SCHEME

Locations of CARES sustainability scheme-approved suppliers

CARES has global reach. The SCS Scheme is internationally recognised as the preferred certification system for sustainable constructional steel. CARES-approved suppliers benefit from the wide acceptance of CARES-approved steel by green building rating systems around the world.

Which suppliers are CARES-approved and where are they?

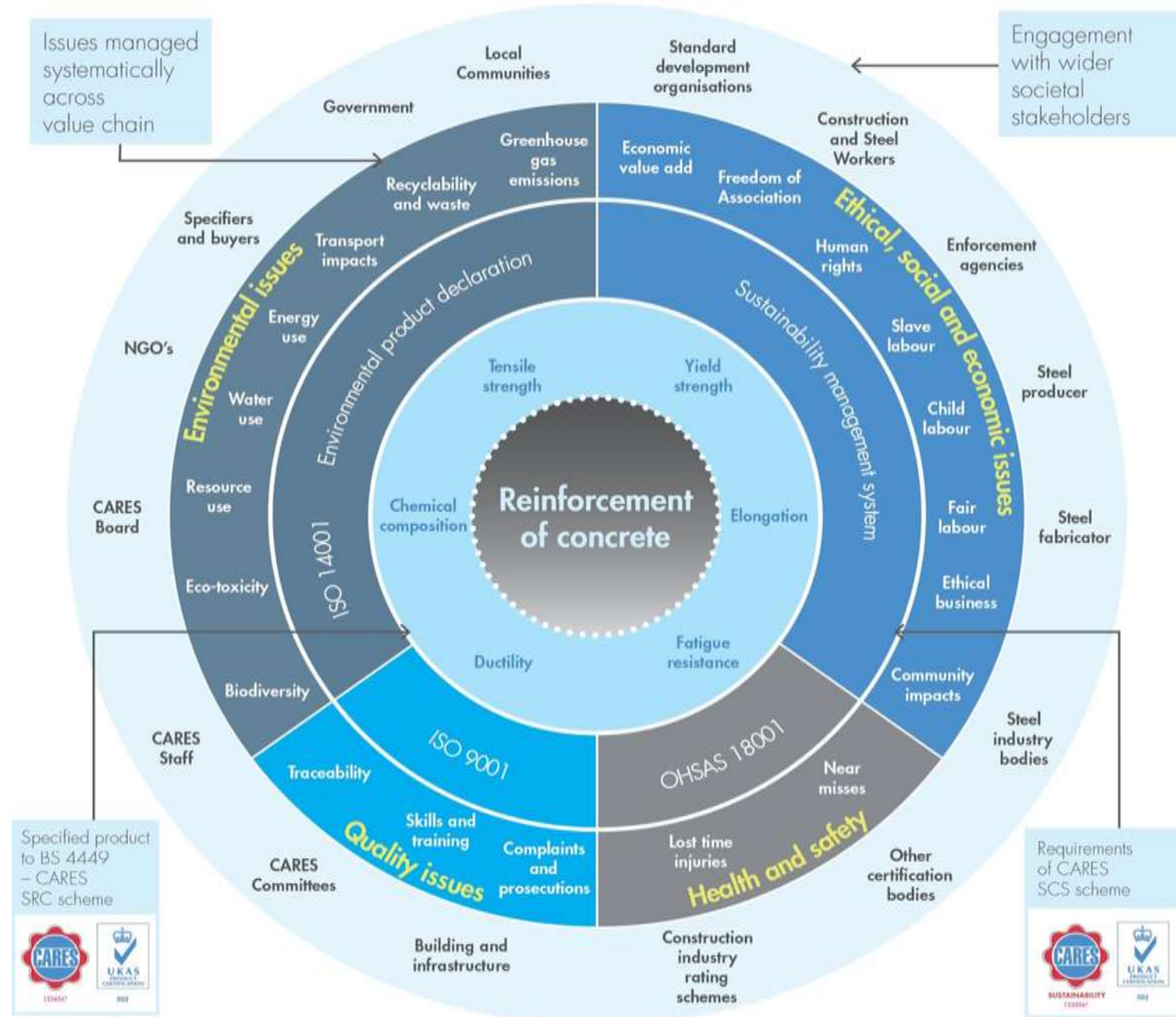


- Aims to improve construction sector sustainability performance
- Applicable to primary producers of steel and steel fabricators
- Based on inclusivity, integrity, stewardship and transparency
- Stakeholder engagement critical to scheme and feeds periodic review



SCHEME BASIS AND STRUCTURE

REINFORCING STEEL BAR (REBAR) AS AN EXTENDED PRODUCT





HOW AUTHORITATIVE IS CARES DATA?

- Certification process: Application review; Stage 1 and Stage 2 detailed on-site audits each year
- Chances of data errors are reduced when compared to sample approach/less frequent audit cycle
- EPD data, which is updated once every 3 years, is subject to an additional verification stage by a third party – BRE

bre

Environmental Product Declaration

BREG EN EPD No.: 000125 Issue: 01
ECO EPD Ref. No: 000454

This is to certify that this verified Environmental Product Declaration provided by:
UK CARES

is in accordance with the requirements of:
EN 15804:2012+A1:2013

This declaration is for:
Carbon Steel Reinforcing Bar (secondary production route – scrap), Sector Average

Company Address
Pembroke House
21 Pembroke Road
Sevenoaks, Kent
TN13 1JH

Emma Baker
Signed for BRE Global Ltd
Operator
01 December 2016
Date of first issue

01 December 2016
Date of first issue

30 November 2019
Supply Date

The verified Environmental Product Declaration is issued subject to terms and conditions for details visit www.globalspec.com/terms.
To check the validity of this EPD please visit www.globalspec.com/validity.
BRE Global Ltd, Gwent, Newport NP23 5JF, UK.
T: +44 (0)1252 817611 F: +44 (0)1252 817622 E: enquiries@bre.com

EPD

EPD131000P Rev 0.3 Page 1 of 12 © BRE Global Ltd 2016

RESPONSIBLE SOURCING

- Life cycle thinking includes social and human rights impacts across whole value chain
- Increasing expectations of responsible sourcing from construction product buyers
- CARES helped develop and aligns with new standards like BES 6001 & BES 6002



bre

BRE Environmental & Sustainability Standard

BES 6001: ISSUE 3.1

Framework Standard for Responsible Sourcing

This BRE Environmental & Sustainability Standard describes the organisational management, supply chain management and sustainability aspects to be addressed in the certification and approval of the responsible sourcing of products

This BRE Environmental & Sustainability Standard is the property of BRE Global Ltd. and is made publicly available for information purposes only. Its use for testing, assessment, certification or approval must be in accordance with BRE Global Ltd internal procedures and requires interpretation by BRE Global and BRE experts. Any party wishing to use or reproduce this BRE Environmental & Sustainability Standard to offer testing, assessment, certification or approval must apply to BRE Global for training, assessment and a licence; a fee will normally be charged. BRE Global will not unreasonably refuse such applications. BRE Global accepts no responsibility for any un-authorised use or distribution by others of this BRE Environmental & Sustainability Standard and may take legal action to prevent such unauthorised use or distribution.

© BRE Global Ltd 2016



PUBLIC PROCUREMENT DRIVERS

- The EU Non-Financial Reporting Directive
- UK government Procurement Policy Note 11/16
- UK Modern Slavery Act (MSA) introduced in March 2016
- Paris Accord and National Implementation Agreements

The UK MSA requires any business with a worldwide turnover above £36m to publically report on its efforts to eradicate slavery and human trafficking in its entire value chain



PUBLIC PROCUREMENT

- EPD / LCA data + social requirements are informing public procurement and funding of construction projects in Netherlands, France, Germany, Norway, UK
- E.g. Balanced scorecard themes – UK HS2



Health, safety and security



Environment



Benchmark for delivery and operational excellence



Vibrant city regions



Design for passengers



Skills and employment



On time



On budget



LESSONS LEARNT

- Expectations about the quality and availability of EPD and social data are growing
- Supply chain focus, data and information on human rights, social and community impacts
- Increasing regulation regarding the reporting of impacts associated with construction materials
- Collaborations and engagement key to achieving performance improvements

Third-Party Certification can enable expectations of public procurers to be met



LESSONS LEARNT

- Sustainable procurement is now a key part of major infrastructure and construction projects
- Some buying organisations have 'Sustainable Materials Specialists'
- Public (and private) sector clients are expecting higher standards of evidence and certifications

Being able to demonstrate the Sustainability of steel construction materials is increasingly a minimum requirement on the biggest contracts





Ayhan Tugrul
General Manager, CARES

Pembroke House, 21 Pembroke
Road, Sevenoaks, Kent, TN13
1XR, UK

Tel: +44 (0)1732 450000
Mobile: +44 (0)788 158 1756

Independent, impartial and trusted
ukcares.com