



THE UNIVERSITY *of* EDINBURGH

Edinburgh Research Explorer

## Cellular immune function in myalgic encephalomyelitis/chronic fatigue syndrome (ME/CFS)

### Citation for published version:

Cliff, JM, King, EC, Lee, J-S, Sepulveda, N, Wolf, A-SFM, Kingdon, C, Bowman, E, Dockrell, HM, Nacul, LC, Lacerda, E & Riley, E 2019, 'Cellular immune function in myalgic encephalomyelitis/chronic fatigue syndrome (ME/CFS)' *Frontiers in Immunology*. DOI: 10.3389/fimmu.2019.00796

### Digital Object Identifier (DOI):

[10.3389/fimmu.2019.00796](https://doi.org/10.3389/fimmu.2019.00796)

### Link:

[Link to publication record in Edinburgh Research Explorer](#)

### Document Version:

Publisher's PDF, also known as Version of record

### Published In:

Frontiers in Immunology

### General rights

Copyright for the publications made accessible via the Edinburgh Research Explorer is retained by the author(s) and / or other copyright owners and it is a condition of accessing these publications that users recognise and abide by the legal requirements associated with these rights.

### Take down policy

The University of Edinburgh has made every reasonable effort to ensure that Edinburgh Research Explorer content complies with UK legislation. If you believe that the public display of this file breaches copyright please contact [openaccess@ed.ac.uk](mailto:openaccess@ed.ac.uk) providing details, and we will remove access to the work immediately and investigate your claim.





# Cellular Immune Function in Myalgic Encephalomyelitis/Chronic Fatigue Syndrome (ME/CFS)

Jacqueline M. Cliff<sup>1\*</sup>, Elizabeth C. King<sup>1</sup>, Ji-Sook Lee<sup>1</sup>, Nuno Sepúlveda<sup>1,2</sup>, Asia-Sophia Wolf<sup>1</sup>, Caroline Kingdon<sup>3</sup>, Erinna Bowman<sup>3</sup>, Hazel M. Dockrell<sup>1</sup>, Luis Nacul<sup>3</sup>, Eliana Lacerda<sup>3†</sup> and Eleanor M. Riley<sup>1†‡</sup>

<sup>1</sup> Department of Immunology and Infection, Faculty of Infectious and Tropical Diseases, London School of Hygiene & Tropical Medicine, London, United Kingdom, <sup>2</sup> Centre of Statistics and Applications, University of Lisbon, Lisbon, Portugal, <sup>3</sup> Department of Clinical Research, Faculty of Infectious and Tropical Diseases, London School of Hygiene & Tropical Medicine, London, United Kingdom

## OPEN ACCESS

### Edited by:

Yenan Bryceson,  
Karolinska Institute (KI), Sweden

### Reviewed by:

Jakob Theorell,  
University of Oxford, United Kingdom  
Francisco Borrego,  
BioCruces Health Research Institute,  
Spain

### \*Correspondence:

Jacqueline M. Cliff  
jackie.cliff@lshtm.ac.uk

†These authors have contributed  
equally to this work

### ‡Present Address:

Eleanor M. Riley,  
The Roslin Institute, University of  
Edinburgh, Edinburgh,  
United Kingdom

### Specialty section:

This article was submitted to  
NK and Innate Lymphoid Cell Biology,  
a section of the journal  
Frontiers in Immunology

**Received:** 17 October 2018

**Accepted:** 26 March 2019

**Published:** 16 April 2019

### Citation:

Cliff JM, King EC, Lee J-S, Sepúlveda N, Wolf A-S, Kingdon C, Bowman E, Dockrell HM, Nacul L, Lacerda E and Riley EM (2019) Cellular Immune Function in Myalgic Encephalomyelitis/Chronic Fatigue Syndrome (ME/CFS). *Front. Immunol.* 10:796. doi: 10.3389/fimmu.2019.00796

Myalgic encephalomyelitis/chronic fatigue syndrome (ME/CFS) is a debilitating condition with unknown aetiology, Myalgic encephalomyelitis unclear pathophysiology and with no diagnostic test or biomarker available. Many patients report their ME/CFS began after an acute infection, and subsequent increased frequency of infections, such as colds or influenza, is common. These factors imply an altered immunological status exists in ME/CFS, in at least a proportion of patients, yet previous studies of peripheral immunity have been discrepant and inconclusive. The UK ME/CFS Biobank, which has collected blood samples from nearly 300 clinically-confirmed ME/CFS patients, enables large-scale studies of immunological function in phenotypically well-characterised participants. In this study, herpes virus serological status and T cell, B cell, NK cell and monocyte populations were investigated in 251 ME/CFS patients, including 54 who were severely affected, and compared with those from 107 healthy participants and with 46 patients with Multiple Sclerosis. There were no differences in seroprevalence for six human herpes viruses between ME/CFS and healthy controls, although seroprevalence for the Epstein-Barr virus was higher in multiple sclerosis patients. Contrary to previous reports, no significant differences were observed in NK cell numbers, subtype proportions or *in vitro* responsiveness between ME/CFS patients and healthy control participants. In contrast, the T cell compartment was altered in ME/CFS, with increased proportions of effector memory CD8<sup>+</sup> T cells and decreased proportions of terminally differentiated effector CD8<sup>+</sup> T cells. Conversely, there was a significantly increased proportion of mucosal associated invariant T cells (MAIT) cells, especially in severely affected ME/CFS patients. These abnormalities demonstrate that an altered immunological state does exist in ME/CFS, particularly in severely affected people. This may simply reflect ongoing or recent infection, or may indicate future increased susceptibility to infection. Longitudinal studies of ME/CFS patients are needed to help to determine cause and effect and thus any potential benefits of immuno-modulatory treatments for ME/CFS.

**Keywords:** myalgic encephalomyelitis, chronic fatigue syndrome, natural killer cells, T cell differentiation, MAIT cells, herpes viruses

## INTRODUCTION

Myalgic encephalomyelitis (or encephalopathy)/chronic fatigue syndrome (ME/CFS) is characterised by unexplained persistent or recurrent incapacitating fatigue for over 6 months leading to substantial reductions in previous levels of occupational, educational, social and personal activities (1, 2) and, often, by moderate or severe physical disability and significant reductions in quality of life (3, 4). With population prevalence rates estimated at 0.1–0.4%, ME/CFS has considerable societal and economic impacts due to its chronic nature, its tendency to affect young adults in the most productive periods of their lives, and its impact on family and friends (3, 5–7). The aetiology remains elusive. Currently, there are no confirmatory diagnostic tests or specific, evidence-based treatments that are widely accepted and that consider the heterogeneity of symptoms and their fluctuating nature. Thus, despite some significant recent advances (8, 9), ME/CFS continues to be poorly understood. Unfortunately, many apparently interesting research findings results have not proven reproducible (10), due in part to the small size and cross-sectional nature of many studies, and to variability between studies in the research methods used and their quality.

Acute viral infections have frequently been associated with the onset of ME/CFS (9) but no specific viral aetiology has been confirmed and there is no consistent association between persistent or chronic virus infection and ME/CFS. One possibility is that people with ME/CFS (PWME) are susceptible to acute viral infections as a consequence of underlying immune dysfunction. Numerous immune abnormalities, including altered plasma cytokine profiles, abnormal T lymphocyte activation and impaired cytotoxic responses, have been described in individuals with ME/CFS (5, 7), but recent systematic reviews and observational studies have failed to identify robust and reproducible immune biomarkers of disease or disease severity (11–13).

There have been a number of reports of inconsistent abnormalities in natural killer (NK) cell function. NK cells are large granular lymphocytes that function as innate immune effectors that, by cytokine production or cytotoxicity, contain infections (or neoplasias) until an effective adaptive response can be mounted. Individuals with inherited NK cell disorders are highly susceptible to systemic herpes virus and other opportunistic infections (14). Direct NK cell activation follows interaction with cells which lack major histocompatibility complex (MHC) Class I ligands for inhibitory NK cell receptors and/or express stress-induced ligands for NK cell activating receptors. Indirect NK cell activation occurs following microbial ligation of pattern recognition receptors on myeloid accessory cells and is mediated by cytokines (IL-12, IL-15, IL-18, IFN- $\alpha$ ) and by contact-dependent stimuli (15, 16). PWME have been variously reported to have increased (17, 18), decreased (19, 20) or normal (21–23) numbers of circulating NK (CD16<sup>+</sup> or CD56<sup>+</sup>, CD3<sup>-</sup>) cells; their NK cells are reportedly deficient in Maher et al. (24) or have enhanced expression of Huth et al. (25) the cytotoxic molecule perforin; are less able (or fully able) to lyse MHC Class I deficient target cells (19, 21, 22, 26); and are defective (or not) in their upregulation of activation markers

after *in vitro* stimulation (21, 22, 27). Again, the reproducibility of many of these studies is hampered by their relatively small size, the diverse clinical presentations of the cases, or the limited extent of the immunological characterisation in any one study.

Importantly, only one (23) of these immunological studies has taken account of the prevalence of human cytomegalovirus (CMV) infection in cases and controls. CMV infection leaves a permanent footprint on the immune system including oligoclonal expansions and terminal differentiation of CD8<sup>+</sup> T cells and expansion of a subset of highly differentiated NKG2C<sup>+</sup> NK cells (28); this NK population is further expanded by subsequent viral infection (28, 29). It remains possible therefore, that the reported differences in T cell and NK cell phenotype and functional capacity between PWME and healthy controls may result from differences in the prevalence of immunomodulatory viruses such as CMV. Here we report an in-depth analysis of peripheral blood leucocyte phenotype and function in a clinically well-defined cohort of moderately and severely affected ME/CFS cases compared to non-fatigued healthy controls and, as a control for reduced levels of physical activity, people with multiple sclerosis. All participants were screened for serological evidence of human cytomegalovirus (CMV), Epstein–Barr virus (EBV), herpes simplex virus 1 (HSV1), Herpes simplex virus 2 (HSV2), varicella-zoster virus (VZV), and human herpesvirus (HHV6) infections.

## MATERIALS AND METHODS

### Recruitment and Clinical Evaluation

Study participants, including PWME, multiple sclerosis (MS) and non-fatigued healthy controls, were recruited through the UK National Health Service (NHS) primary and secondary health care services. In addition, some people with clinically confirmed severe ME/CFS were identified via support groups and were invited to participate. All potential participants were rigorously assessed to ensure that they met the study case definitions for ME/CFS. Non-fatigued healthy controls were also recruited by advertisement within Higher Education Institutions or were friends or family members of PWME. Ethical approval was granted by the London School of Hygiene & Tropical Medicine (LSHTM) Ethics Committee (Ref. 6123) and the National Research Ethics Service (NRES) London-Bloomsbury Research Ethics Committee (REC ref. 11/10/1760, IRAS ID: 77765). All participants provided written informed consent for questionnaire, clinical measurement and laboratory test data, and for samples to be made available for ethically-approved research, after receiving an extensive information sheet and consent form, which included an option to withdraw from the study at any time.

All participants with ME/CFS or MS had previously received a confirmed medical diagnosis. Participants were aged between 18 and 60 years. PWME were reassessed by clinical research staff for compliance with the Canadian Consensus (2) and/or CDC-1994 (“Fukuda”) (1) criteria, which were the study case definitions, before recruitment into this study. Participants were excluded if they had (i) taken antiviral medication or drugs known to alter immune function in the preceding 3 months;

(ii) had any vaccinations in the preceding 3 months; (iii) had a history of acute and chronic infectious diseases such as hepatitis B and C, tuberculosis, HIV (but not herpes virus or other retrovirus infection); (iv) another chronic disease such as cancer, coronary heart disease, or uncontrolled diabetes; (v) a severe mood disorder; (vi) been pregnant or breastfeeding in the preceding 12 months; or (vii) were morbidly obese (BMI  $\geq$  40). Once eligibility was confirmed, participants were invited to a recruiting centre for clinical assessment and blood sample collection: this included the healthy controls, PWME and people with MS. Those participants with severe disease and mobility restrictions were visited at home by a research nurse. **Supplementary Table S1** shows the range of clinical variables including the Fatigue Severity Scale (30) collected from the study population, some of which were used for assessing eligibility. Participants were not excluded on the basis of minor ailments such as sore throat, fever/chills, tender glands, flu symptoms, and or new sensitivity/allergy, to avoid developing an artificial control group. All participants were part of the UK ME/CFS Biobank (UKMEB); further details on the method used for selection and recruitment of participants and processing of data and samples were described previously (31).

### Power Calculation

We recruited 404 participants comprising 251 with ME/CFS (54 severely affected and 197 mild/moderate cases), 46 cases of MS, and 107 healthy controls. Based on our own data on NK cell responses to cytokine stimulation in HCMV-infected healthy adults (32) we estimated that the proposed sample size would provide at least 80% power to detect a 30% difference in NK cell responses between MS and severely affected cases (the comparison requiring the highest sample size) and >90% power to detect a 20% difference in NK cell response between cases and healthy controls (Epi Info, version 3.5.53).

### Sample Collection and Processing, Including PBMC Freezing

Blood samples were collected in sodium heparin (for PBMC) or in potassium EDTA (for plasma) vacutainers (Becton Dickinson) and transported within Pathopak containers (in compliance with UN 3373 regulations), at room temperature (18–25°C) protected from direct sunlight and extremes of environmental temperature. Samples were delivered to the University College London / Royal Free Hospital (UCL/RFH) BioBank laboratories for processing and storage within 6 h of collection: the average time from collection to processing was 2.5 h across all four study groups. Serum, plasma, and peripheral blood mononuclear cells (PBMC) were processed and aliquoted in volumes of 200  $\mu$ l to 2 ml. PBMCs were aliquoted at  $5 \times 10^6$  cells/ml. Aliquots were stored in 1 or 2 ml cryotubes, in vapour phase liquid nitrogen at  $-180^\circ\text{C}$ , and shipped to LSHTM for laboratory analysis on dry ice. Each aliquot was labelled with a 2D bar code corresponding to a unique 15 digit ISBT 128 (global standard) identifier which also served to anonymise the samples. All laboratory evaluations were performed in a blinded manner with samples identified only by their unique identifier.

### Herpesviruses Serology

Plasma concentrations of IgG to herpes simplex virus-1 (HSV 1), HSV 2, Varicella Zoster virus (VZV), human cytomegalovirus (CMV), Epstein Barr virus (EBV) viral capsid antigen (VCA), and EBV nuclear antigen 1 (EBNA 1) and human herpes virus 6 (HHV 6) were assayed by commercial quantitative ELISA [Demeditec Diagnostics, Germany for all viruses, except HHV6 assay from VIDIA (Vestec, Czech Republic)] according to the manufacturer's instructions. IgG concentrations were expressed as arbitrary units per millilitre (U/ml). For HSV1, HSV 2, VZV, CMV and EBV, samples with IgG concentration  $\leq$ 8 U/ml were scored as negative and those with concentration  $\geq$ 12 U/ml were regarded as positive. Samples with IgG concentration between 8 and 12 were regarded as equivocal and were re-tested. Samples were recorded as EBV seropositive if they gave a positive reaction to EBV-VCA and/or EBNA 1. For HHV-6, concentrations  $\leq$ 10.5 U/ml were considered negative, while concentrations  $\geq$ 12.5 U/ml were considered positive. Samples giving concentrations between 10.5 and 12.5 U/ml were considered equivocal and re-tested.

### Leucocyte Phenotyping

Cryopreserved PBMCs were transported to the research laboratory on dry ice, and analysed in mixed batches containing samples across the four clinical groups. PBMC were thawed by addition of warm RPMI-1640 tissue culture medium (Invitrogen), washed in RPMI containing 1% foetal bovine serum (Invitrogen) and counted by trypan blue exclusion. Cells were resuspended at  $4 \times 10^6$  cells/ml in complete medium [RPMI-1640 plus 10% human AB serum (Sigma) and 1% penicillin, streptomycin/glutamine (Invitrogen)]. Cells were either used immediately for *ex vivo* phenotyping or were placed in culture for functional analysis. For flow cytometry, cells (200,000/well) were aliquoted into 96 well V-bottom microtitre plates, stained as described previously (32) in Cytofix/Cytoperm<sup>TM</sup> for intracellular stains, and analysed on an LSR-II flow cytometer (Becton Dickinson). Antibody staining panels are shown in **Supplementary Tables S2, S3**. Data were collected in FACSDiva v6.1 and analysed using Flowjo v10 (TreeStar) and SPICE (33) software.

### Functional Assays

Cells were aliquoted (200,000 cells/well) into U-bottom microtitre plates together with one of the following stimuli: complete medium (negative control), cell stimulation cocktail (81 nM PMA/1.34  $\mu$ M ionomycin; eBioscience); CpG2216 (2.5  $\mu$ M; Invivogen), IL-12+IL-18 (5 and 50 ng/ml respectively; Peprotech and R&D, respectively) or MHC Class-I deficient K562 cells (at a host:target cell ratio of 2:1). In addition, cells were plated into flat-bottom microtitre plates that had previously been coated overnight with anti-CD16 antibody (20  $\mu$ g/ml, Becton Dickinson) or an isotype control antibody (20  $\mu$ g/ml; eBioscience). After incubation at 37°C in 5% CO<sub>2</sub> for 1 h (cell stimulation cocktail) or 15 h (all other stimuli), brefeldin A (Golgiplug; final concentration 1:1,000; Becton Dickinson) and monensin (Golgistop, final concentration 1:1,500; Becton Dickinson) were added to each well and plates



were then incubated for a further 3 h before staining for flow cytometry (as above). For any assays of CD107a expression, anti-CD107a antibody was added to wells at the start of the culture period. The 17 h incubation period was selected, based on our previous reports (34–36), to allow for upregulation of both IFN $\gamma$  and CD25, and degranulation via both direct and indirect mechanisms.

## Data Analysis

The primary data analysis comprised four groups of participants: people with mild/moderate ME/CFS (ME-M), people severely affected by ME/CFS (ME-S), healthy controls (C), and people with multiple sclerosis (MS). All data analyses were carried out in a blinded manner with groups identified by a code number; the code was broken only after all analyses were complete.

Univariate analyses were conducted using GraphPad Prism v7.01 unless otherwise stated. Continuous variable datasets were checked for Normal distribution by D'Agostino & Pearson test, and analysed by ANOVA or Kruskal-Wallis test for parametric or non-parametric datasets respectively when comparing clinical groups, or by Student's *T*-test or Mann Whitney test respectively when comparing the CMV serostatus on the outcome variables. All *P*-values reported are after correcting for multiple testing using Tukey's test for parametric data or Dunn's test for non-parametric data. Differences between clinical groups in herpesvirus seroprevalences were analysed by Chi squared test, using Stata version 15.1. Receiver Operating Characteristic (ROC) curve analysis was conducted in GraphPad Prism.

The above analysis was extended to control for possible confounding variables using R statistical software (37). For flow cytometry data, the percentages of each cell subpopulation were conveniently transformed into the respective log-odds [e.g.,  $\log \%CD4^+ / (100\% - \%CD4^+)$ ]: the resulting data followed approximately normal distributions. Multiple linear regression was used to compare the outcome variables between groups; all regression models included gender, age at recruitment, analysis batch and seropositivity for each herpes virus as confounding factors. To determine the significance of differences between clinical groups, regression models including group as a variable were compared with models excluding group using the likelihood ratio test. The significance level of each individual test was determined to ensure an overall significance level in a context of multiple testing. The significance level was pre-specified at 5% for each separate analysis.

## RESULTS

### Study Participant Characteristics

The final cohort comprised 251 people with ME/CFS (197 mild/moderate and 54 severe), 46 people with MS and 107 healthy controls. The demographic and clinical characteristics of the cohort are summarised in **Table 1**. Symptoms typically associated with infection or inflammation were more frequent and more severe among PWME than among those with MS, although mild symptoms of inflammation were present in nearly 50% of people with MS. Most healthy controls did not present with any symptoms ( $P < 0.0001$ ). Fatigue severity scores were, as

expected, higher in PWME, with a trend towards higher scores in those severely affected, followed by people with mild/moderate ME/CFS, then people with MS and healthy controls presenting very low levels of fatigue ( $P < 0.001$ ). Erythrocyte Sedimentation Rate (ESR), a non-specific marker of inflammation, was slightly raised in people with mild/moderate ME/CFS, with similar median values found in all other groups ( $P = 0.01$ ). Those with MS were slightly older compared to other study groups, but distribution by sex, deprivation index, and total white blood cells and lymphocytes was similar across the groups.

### Serology

Plasma samples were tested by quantitative ELISA for six of the human herpesviruses, HSV-1, HSV-2, VZV, CMV, EBV, and HHV6. There were no significant differences between the groups in the proportions of individuals who were seropositive for any of these viruses (**Table 1**). However, concentrations of anti-EBV VCA varied significantly among the groups (Kruskal-Wallis test:  $P = 0.016$ ) and this was due to higher concentrations of anti-EBV VCA antibodies among people with MS (**Supplementary Figure S1**).

### Leucocyte Phenotyping

Cryopreserved peripheral blood mononuclear cells were thawed and analysed by flow cytometry; cell gating is shown in **Figure 1**. A generous leucocyte gate was set to include all live cells and then a more restrictive lymphocyte gate was set. Within the leucocyte gate, monocytes were identified by CD14 positivity and CD3 negativity whilst dendritic cells were identified as CD14/CD3 negative and either CD11c positive (myeloid DC) or CD123 positive (plasmacytoid DC). Within the lymphocyte gate, T cells were gated as CD3<sup>+</sup> and either CD4<sup>+</sup> or CD8<sup>+</sup>; B cells as CD19<sup>+</sup> and natural killer (NK) cells as CD3 negative/CD56 positive. NK cells were subsequently analysed for expression of NKG2C, NKp46, and CD57.

In an unadjusted ANOVA analysis, there were significant differences between the groups in the proportions of live leucocytes that were monocytes ( $P = 0.0133$ ), myeloid DCs ( $P < 0.0121$ ), and plasmacytoid DCs ( $P < 0.0001$ ) (**Figure 2**): these differences were due to altered frequencies in the multiple sclerosis patients, and disappeared after adjusting for gender, age and herpesvirus sero-positivity (not shown). By contrast, the proportions of leucocytes that were B cells, T cells or NK cells did not differ significantly among the groups in either the adjusted or the unadjusted analysis.

Within the lymphocyte gate, the proportions of cells that were either CD4<sup>+</sup> T cells or CD8<sup>+</sup> T cells (and, as a consequence, the CD4/CD8 ratio) differed significantly between groups in the unadjusted analysis (ANOVA  $P < 0.0001$  in each case) and these differences persisted after adjusting for confounders ( $P < 0.0001$  in each case) (**Figure 3**). However, these differences were entirely due to significantly higher proportions of CD4<sup>+</sup> T cells, lower proportions of CD8<sup>+</sup> T cells and thus a higher CD4/CD8 ratio in the MS patients; there were no significant differences in lymphocyte distribution between ME/CFS cases and healthy controls. Similarly, there were no significant differences between

**TABLE 1** | Description of study population, in relation to the following variables—demographic, socio-economic, immune-related symptoms, Fatigue Severity Scores, viral serology, and baseline routine blood tests results.

| Discrete variables                      | Category of recruitment |               |          |                |        |               |        |               | Total | P-value* |       |
|---|-------------------------|---------------|----------|----------------|--------|---------------|--------|---------------|-------|----------|-------|
|   | ME/CFSsa                |               | ME/CFSmm |                | MS     |               | HC     |               |       |          |       |
|   | (n)                     | (%)           | (n)      | (%)            | (n)    | (%)           | (n)    | (%)           |       |          |       |
| <b>SEX</b>                              |                         |               |          |                |        |               |        |               |       |          |       |
| Male                                    | 13                      | 24.1          | 47       | 24.0           | 10     | 20.4          | 28     | 26.2          | 98    | 24.1     | 0.89  |
| Female                                  | 41                      | 75.9          | 149      | 76.0           | 39     | 79.6          | 79     | 73.8          | 308   | 75.9     |       |
| <b>IMMUNE-RELATED SYMPTOMS</b>          |                         |               |          |                |        |               |        |               |       |          |       |
| No symptoms                             | 0                       | 0.0           | 10       | 5.1            | 25     | 51.0          | 74     | 69.1          | 109   | 26.9     | 0.000 |
| Some symptoms                           | 22                      | 40.7          | 83       | 42.6           | 20     | 40.8          | 31     | 29.0          | 156   | 38.5     |       |
| Moderate/severe symptoms                | 32                      | 59.3          | 102      | 52.3           | 4      | 8.2           | 2      | 1.9           | 140   | 34.6     |       |
| <b>VIRAL SEROLOGY RESULTS</b>           |                         |               |          |                |        |               |        |               |       |          |       |
| CMV positive                            | 18                      | 33.3          | 57       | 29.4           | 18     | 45.0          | 40     | 37.4          | 133   | 33.8     | 0.40  |
| EBV combined positive                   | 48                      | 88.9          | 171      | 88.1           | 39     | 95.5          | 99     | 93.4          | 357   | 90.6     | 0.42  |
| HSV1 positive                           | 29                      | 53.7          | 82       | 42.3           | 23     | 57.5          | 45     | 42.4          | 179   | 45.4     | 0.49  |
| HSV2 positive                           | 22                      | 40.7          | 76       | 39.2           | 16     | 40.0          | 36     | 33.9          | 150   | 38.1     | 0.12  |
| VZV positive                            | 52                      | 96.3          | 190      | 97.9           | 39     | 97.5          | 104    | 98.1          | 385   | 97.7     | 0.85  |
| HHV6 positive                           | 52                      | 96.3          | 177      | 91.2           | 36     | 90.0          | 102    | 96.2          | 367   | 93.1     | 0.48  |
| <b>Continuous variables</b>             |                         |               |          |                |        |               |        |               |       |          |       |
|   | ME/CFSsa                |               | ME/CFSmm |                | MS     |               | HC     |               |       | P-value* |       |
|   | Median                  | IQR           | Median   | IQR            | Median | IQR           | Median | IQR           |       |          |       |
| Age (years)                             | 46                      | 32–51         | 43       | 34–52          | 51     | 32–52         | 44     | 32–52         |       | 0.002    |       |
| Index of multiple deprivation (ranking) | 18,883                  | 12,463–24,921 | 16,873   | 11,177 –23,373 | 15,853 | 12,567–21,921 | 17,02  | 13,564–25,988 |       | 0.29     |       |
| Fatigue severity scale scores           | 6.67                    | 6.3–6.89      | 6.55     | 6.00–7.00      | 5.61   | 3.67–6.44     | 2.17   | 1.55–2.67     |       | 0.000    |       |
| <b>BASELINE BLOOD TESTS RESULTS</b>     |                         |               |          |                |        |               |        |               |       |          |       |
| White blood cells (10 <sup>9</sup> /L)  | 5.88                    | 5.13–7.65     | 6.10     | 5.20–6.93      | 6.01   | 5.10–7.30     | 5.99   | 5.12–6.86     |       | 0.93     |       |
| Lymphocytes (10 <sup>9</sup> /L)        | 1.78                    | 1.57–2.03     | 1.91     | 1.60–2.31      | 1.81   | 1.49–2.15     | 1.82   | 1.52–2.21     |       | 0.15     |       |
| ESR (mm/h)                              | 5                       | 2–10          | 7        | 5–12           | 5      | 2–8           | 5      | 2–8           |       | 0.012    |       |

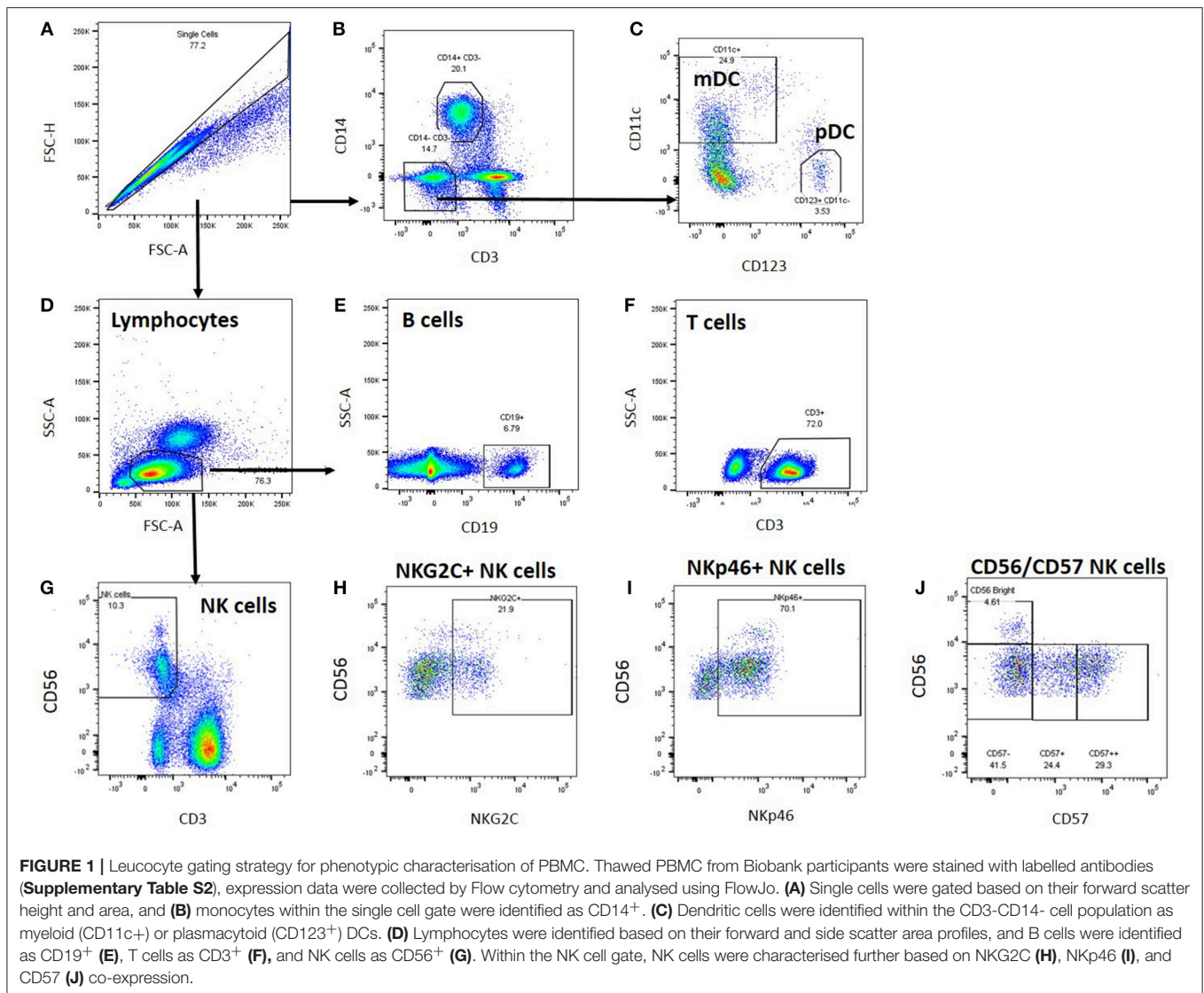
ESR, Erythrocyte sedimentation rate; CMV, Cytomegalovirus; EBV, Epstein–Barr virus [combined results for Viral capsid antigen (VCA) and Epstein–Barr nuclear antigen (EBNA)]; HSV1, Herpes simplex virus 1; HSV2, Herpes simplex virus 2; VZV, varicella-zoster virus; HHV6, Human herpesvirus 6; ME/CFSsa, people with ME/CFS with severe clinical manifestations; ME/CFSmm, people with ME/CFS with mild/moderate manifestations; MS, people with multiple sclerosis; HC, people recruited as healthy controls. \*P-values—from  $\chi^2$  tests for categorical variables and Kruskal–Wallis test for continuous variables (which were non-normally distributed).

the groups in the absolute numbers of different leucocyte and lymphocyte populations (**Supplementary Figure S2**).

More detailed phenotyping of the circulating T cell population revealed no major differences in the distribution of CD45RA- and CCR7-defined naïve and memory T cell populations in univariate analysis (**Figure 4**). In a more detailed phenotypic analysis of CD4<sup>+</sup> and CD8<sup>+</sup> T cell compartments by analysis of CD28 and CD57 alongside CCR7 and CD45RA, we found that there were no differences in the CD4<sup>+</sup> T cell differentiation subpopulations in people with ME/CFS, although there were altered cell population frequencies in people with MS (**Figure 5A**). However, modest differences were observed in several differentiation populations in the CD8<sup>+</sup> T cell compartment (**Figure 5B**) with a small increase in the proportion of EM cells (CCR7-CD45RA-CD28-CD57-) and a reduction in the proportion of terminally differentiated cytotoxic effector TEMRA cells (CCR7-CD45RA+CD28-CD57+) in people living with ME/CFS. There were also small changes in other minor CD8<sup>+</sup> T cell populations, with small reductions in proportions

of CCR7-CD45RA+CD28+CD57+, CCR7+CD45RA-CD28+CD57-, and CCR7-CD45RA-CD28+CD57- cells in people with ME/CFS and an increased proportion of CCR7+CD45RA+CD28-CD57- cells.

Of greater potential relevance, however, using TCR V $\alpha$ 7.2 and CD161 to define circulating populations of mucosal associated invariant T (MAIT) cells, we observed highly significant differences between the groups in the proportion of T cells that are MAIT cells and the proportion of MAIT cells that express CD8 (unadjusted ANOVA,  $P < 0.001$  in both cases) (**Figure 6**). After adjusting for confounding, the multiple linear regression analysis revealed that this was due to increased proportions of MAIT cells ( $P < 0.001$ ), and particularly of CD8<sup>+</sup> MAIT cells, in people with severe ME/CFS compared to healthy controls ( $P < 10^{-5}$ ). Importantly however, although the overall proportions of MAIT cells were not higher among people with MS than among healthy controls, their MAIT cells were also heavily skewed to the CD8<sup>+</sup> subset, indicating that this is not a diagnostic feature of severe ME/CFS cases. ROC analysis showed that the



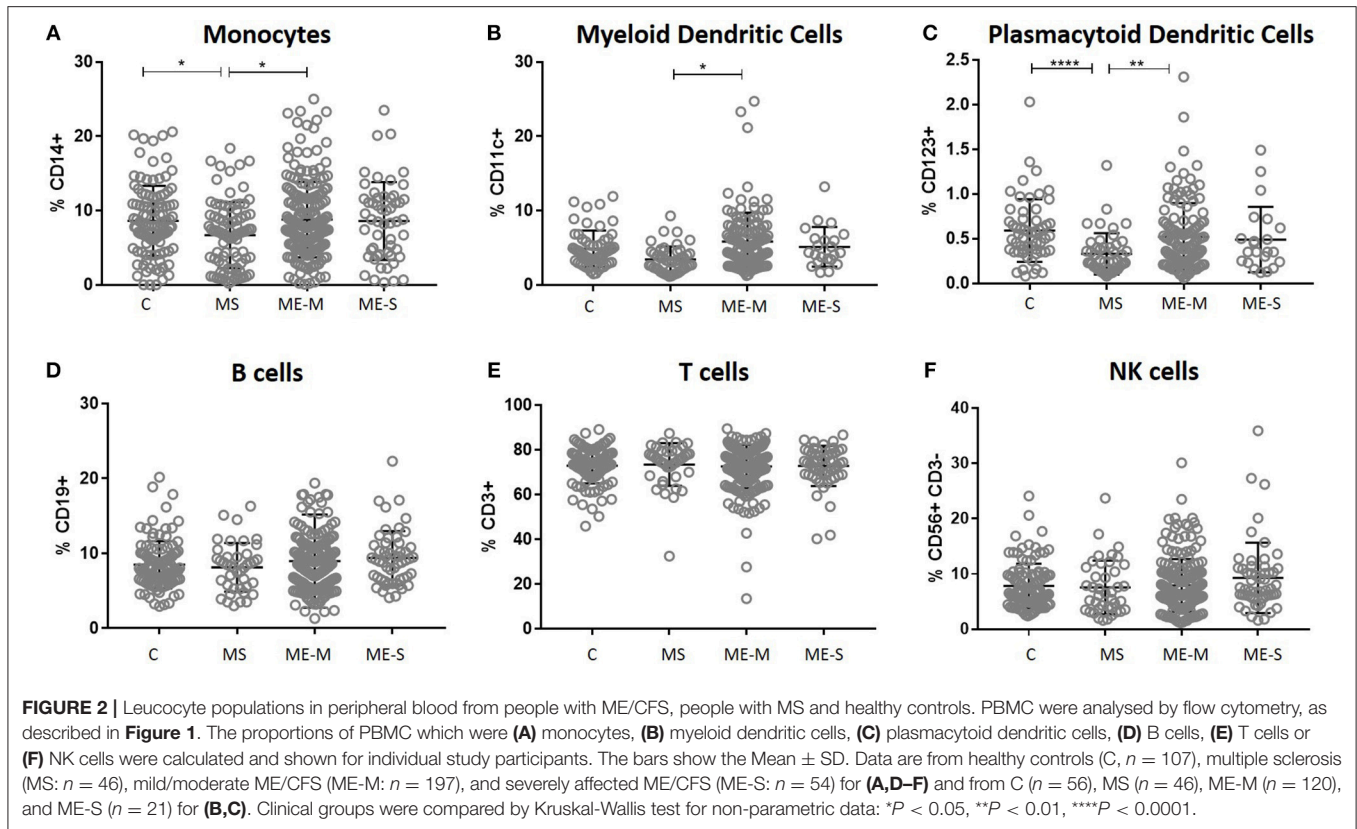
total MAIT cell frequency in the T cell population (**Figure 6F**) showed a weak capacity to discriminate severely affected ME/CFS patients from healthy controls, but that the mild/moderately affected patients were not predicted by this measure. Potentially more importantly, the proportion of MAIT cells which were CD8<sup>+</sup> (**Figure 6G**) had a greater capacity to discriminate severe ME/CFS from health, with an AUC of 0.756. In accordance with previous reports (38), the vast majority of MAIT cells in all subjects had an undifferentiated (CD28<sup>+</sup> CD57<sup>-</sup>) phenotype (**Supplementary Figure S3**).

Looking in more detail at the phenotype of the NK cell population, we observed no significant differences in the proportions of CD56 bright cells, in the distribution of CD57<sup>-</sup>, CD57<sup>+</sup> or CD57<sup>++</sup> cells or in the proportions of cells expressing either NKG2C or NKp46 (**Figure 7**) or in the expression of six different killer cell immunoglobulin-like receptors (KIR) (**Supplementary Figure S4**) in either the adjusted or the unadjusted analysis.

## T Cell and NK Cell Function

We next compared the ability of T cells and NK cells from healthy controls, people with MS and PWME to respond to *in vitro* stimulation. For assessment of T cell responsiveness, PBMCs were cultured for 4 h with the mitogenic cocktail of PMA and ionomycin and then stained for intracellular cytokines. The proportion of cells producing IL-2, IFN- $\gamma$  or a combination of IL-2 and IFN- $\gamma$  was assessed in the CD3<sup>+</sup> CD4<sup>+</sup> and the CD3<sup>+</sup> CD8<sup>+</sup> cell populations but no significant differences were observed among the groups in either the adjusted or unadjusted analysis (**Figure 8**).

NK cell function was assessed by culturing PBMCs for 18 h with IL-12 plus IL-18, with CpG, with MHC Class-I deficient K562 cells or in plates coated with a cross-linking antibody to CD16. CD3<sup>-</sup>/CD56<sup>+</sup> NK cells were gated and analysed for intracellular IFN- $\gamma$  or for cell surface expression of the activation marker CD25 or the degranulation marker CD107a (LAMP-1) (**Figure 9**). Again, no significant differences were detected



between participants with ME/CFS and controls in any of the responses.

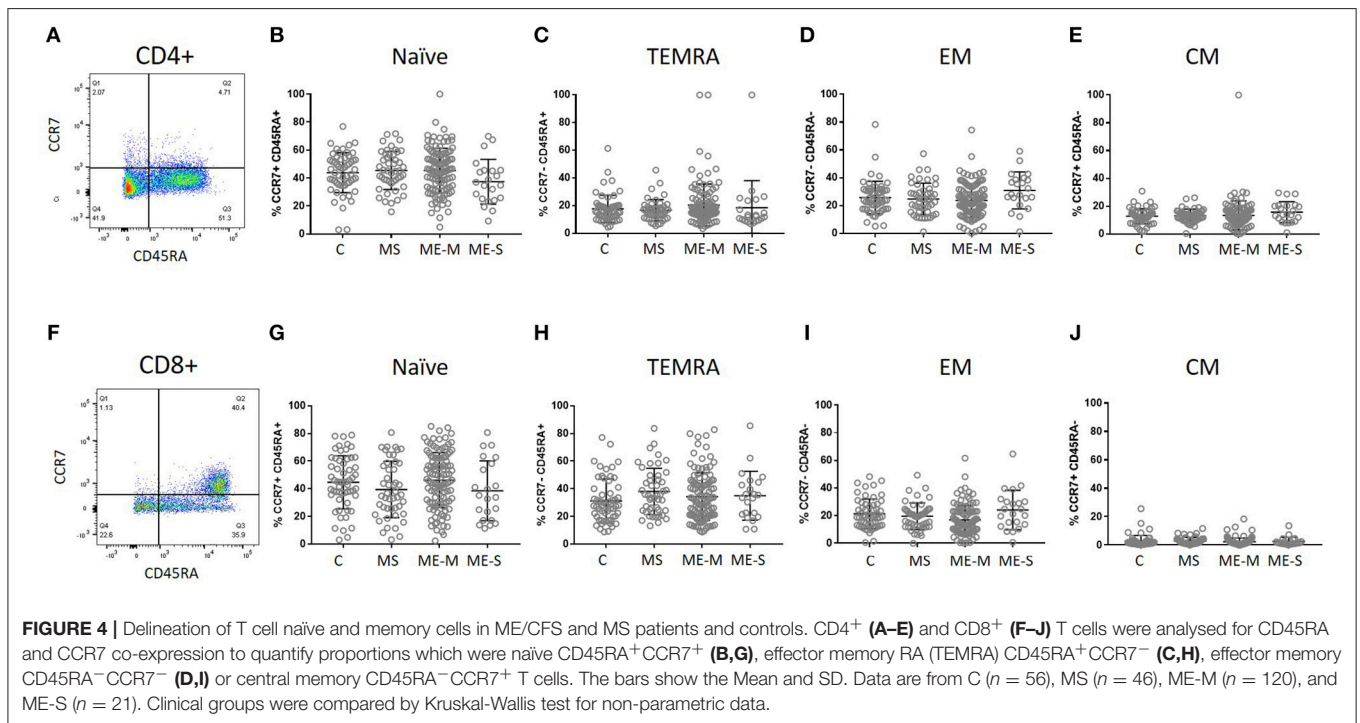
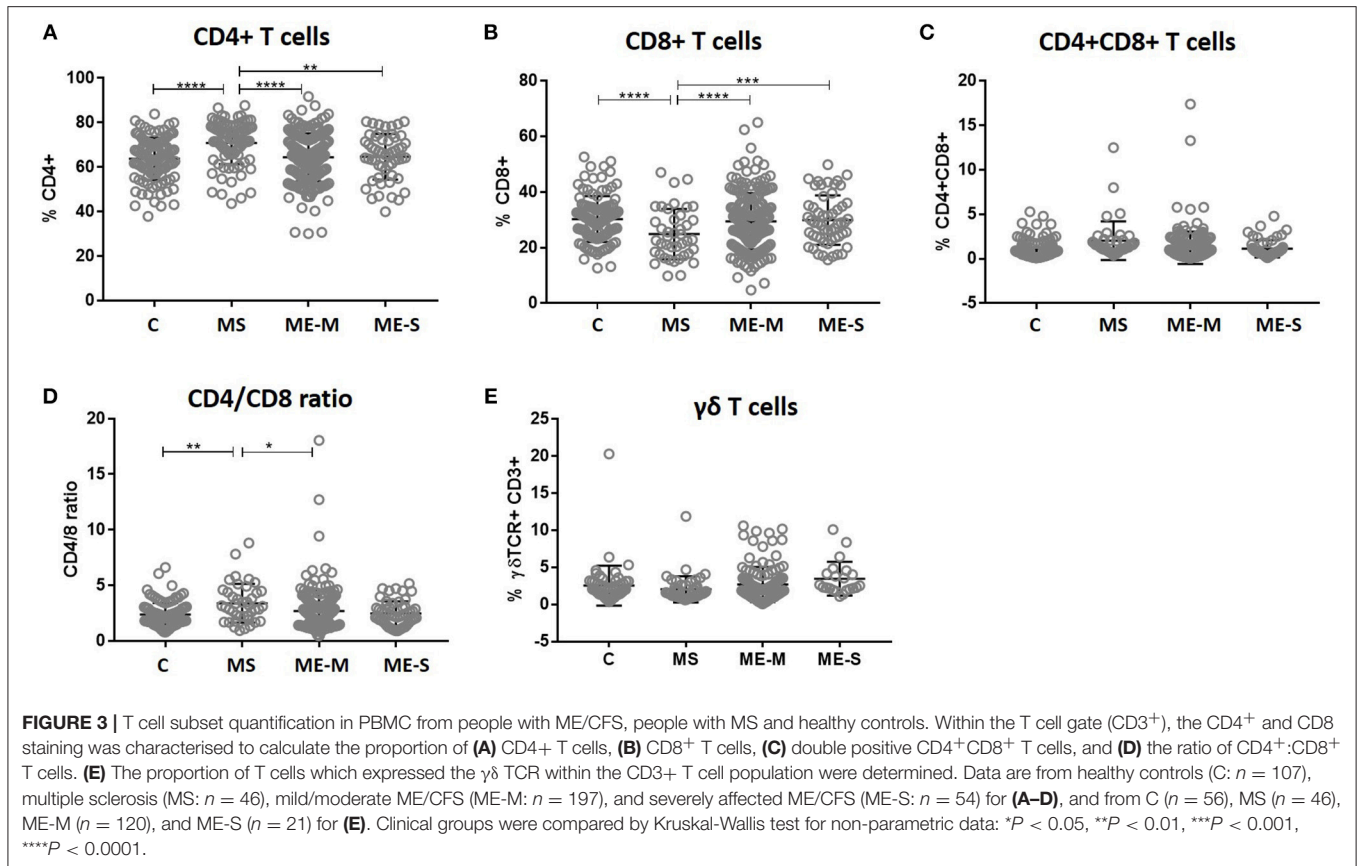
## Interaction Between Herpesvirus Infection Status and Lymphocyte Phenotype and Function

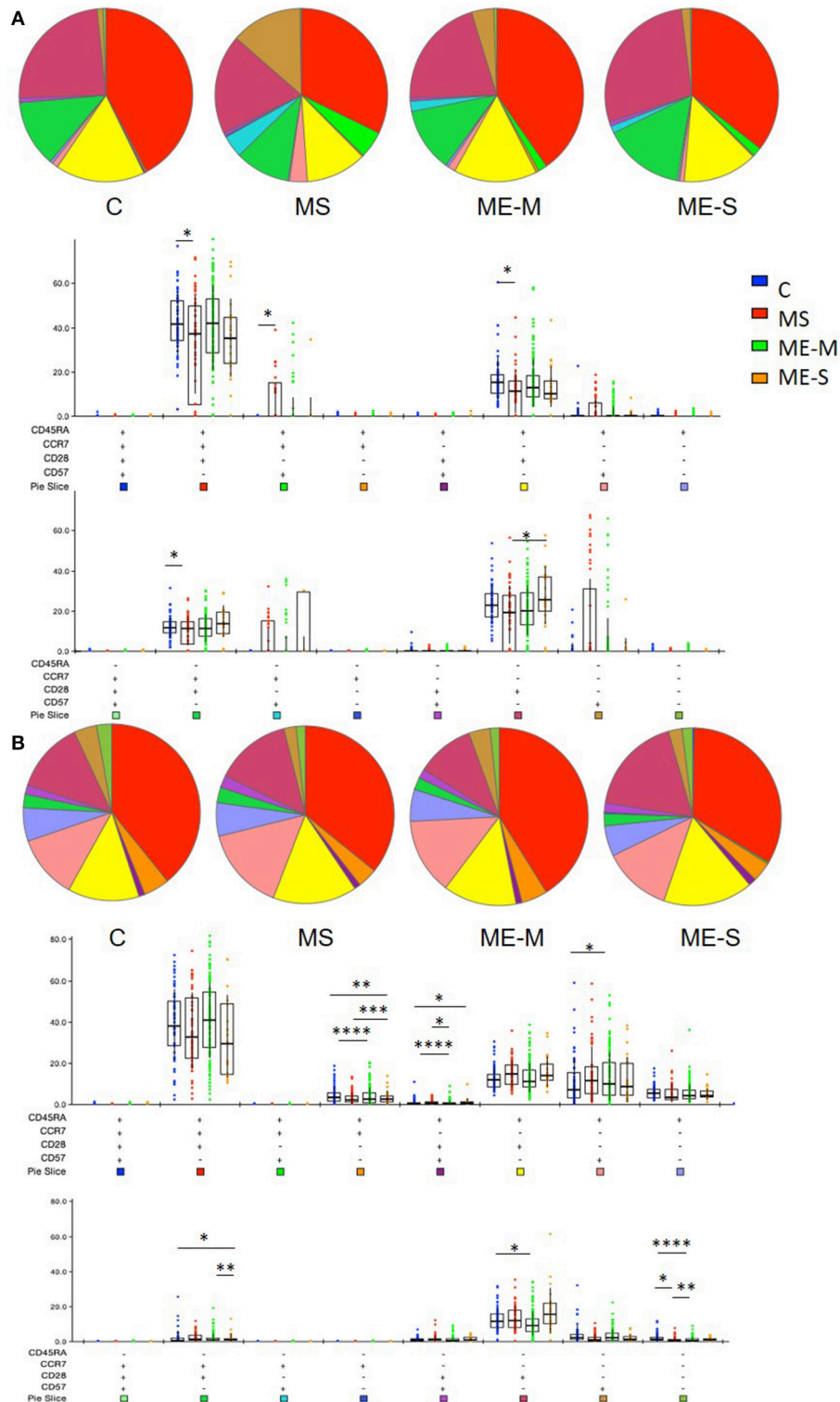
Herpesvirus infection, most notably infection with CMV, is known to affect both the maturational phenotype and the function of human CD8<sup>+</sup> T cells (39) and NK cells (28). We therefore compared lymphocyte phenotype and function among those subjects who were either seropositive or not for CMV. Across all the study groups, participants who were CMV-seropositive had significantly lower proportions of CD4<sup>+</sup> and higher proportions of CD8<sup>+</sup> T cells amongst their PBMC (**Supplementary Figure S5**). Following stimulation with PMA and ionomycin, higher proportions of both CD4<sup>+</sup> and CD8<sup>+</sup> T cells made IFN $\gamma$ , and more cells were IL-2 and IFN $\gamma$  double positive, amongst CMV seropositive individuals. The proportion of PBMC which were CD3<sup>+</sup>CD56<sup>+</sup> (NKT-like) cells was highly significantly enhanced amongst CMV-positive participants. In the NK cell population, more cells were NKG2C<sup>+</sup>, and there were decreased proportions of CD56<sup>dim</sup>CD57<sup>intermediate</sup> and increased proportions of CD56<sup>dim</sup>CD57<sup>bright</sup> amongst CMV-seropositive participants. Amongst CMV-seropositive individuals, there was a decreased *in vitro* response to IL-12 and IL-18 stimulation, with significantly reduced CD25, CD107, and IFN $\gamma$  expression (**Supplementary Figure S5G**).

## DISCUSSION

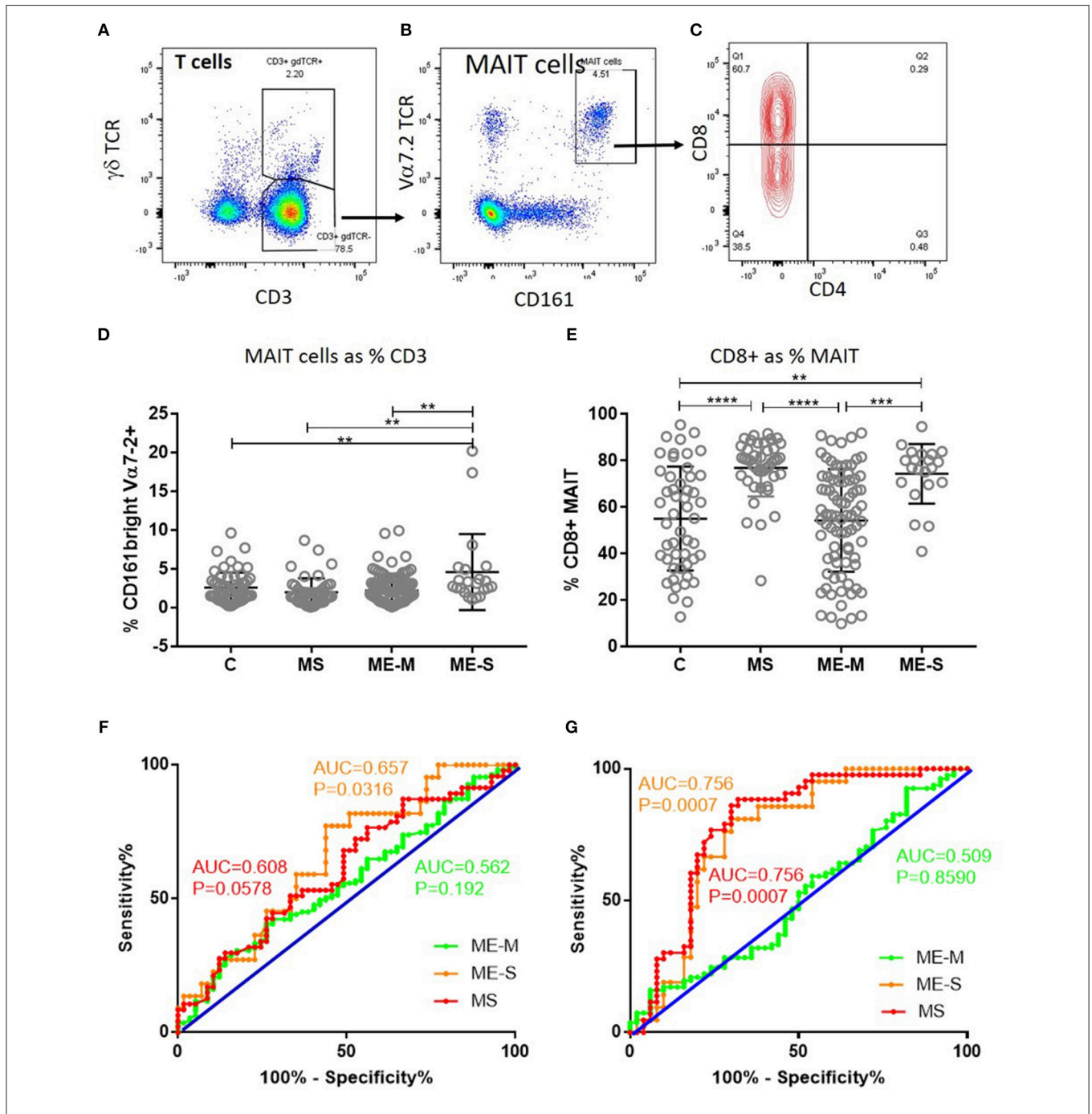
In a cohort of 250 well-characterised people living with ME/CFS, including a number who are severely affected, we have identified differences in peripheral immune cell phenotype compared to healthy control individuals. These include highly significantly enhanced proportions of mucosal associated invariant T cells, particularly CD8<sup>+</sup> MAIT cells, in PWME compared to healthy controls, and these were further enhanced in individuals who had severe disease manifestation. We also found an enhancement in the proportion of effector memory CD8<sup>+</sup> T cells, a reduction in the proportion of terminally differentiated effector TEMRA cells, and minor modulations in different CD8<sup>+</sup> T cell differentiation subcompartments in PWME. The functional role and consequence of change within these different CD8<sup>+</sup> T cell subpopulations remains to be determined. We did not find any evidence for altered function of T cells in PWME. Of note, we did not find any differences in the proportions of NK cells in PWME, or in their differentiation status, their expression of KIR receptors or of activation markers *ex vivo* or following *in vitro* stimulation. Based on previous reports of abnormal NK cell function in ME/CFS (17–19, 24, 25, 27, 40) this was an unexpected finding, although is consistent with a small number of previous reports of normal NK cell proportion and function (21–23). In our system, we cultured PBMC for 18 h to allow time for direct and indirect cell activation: it is possible that differences in degranulation or cytokine production may have been observed with a shorter stimulation period. However, we did find significant differences



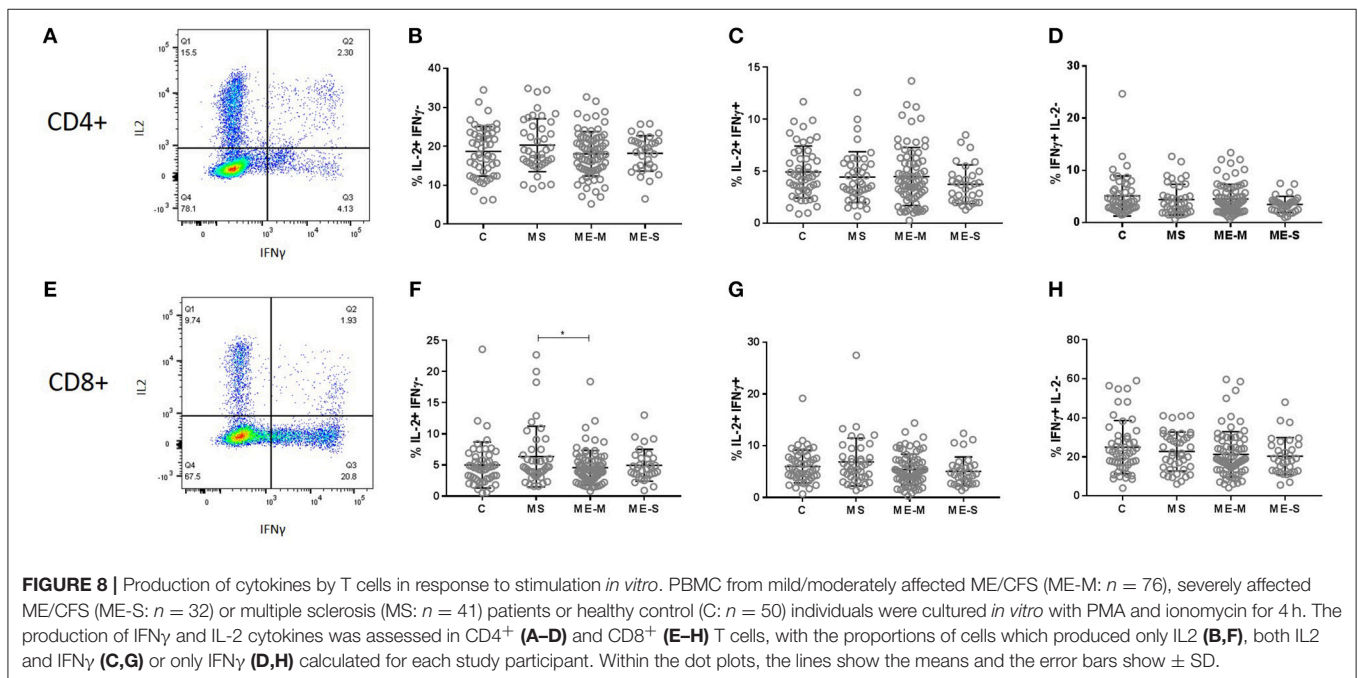
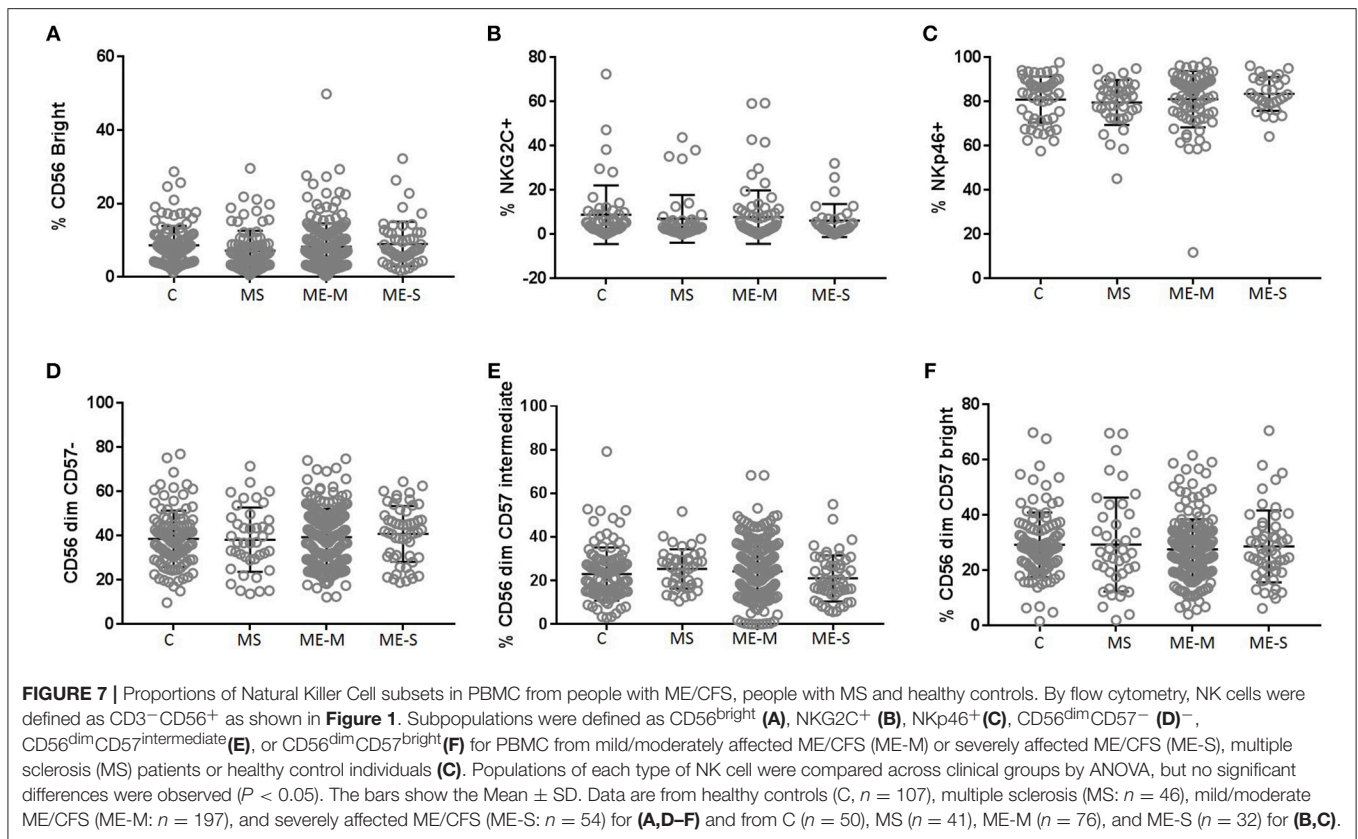




**FIGURE 5 |** Proportions of differentiated T cell populations in people with ME/CFS, people with MS and healthy controls. CD4<sup>+</sup> **(A)** and CD8<sup>+</sup> **(B)** T cells were analysed for CCR7, CD45RA, CD28, and CD57 co-expression to quantify proportions of T cells expressing combinations of these markers using FlowJo and SPICE software. The pie charts show the median proportions of each cell type in each clinical group. In the bar and whisker plots, cell populations were compared between clinical groups by Kruskal-Wallis test with Dunn's correction for multiple comparisons for each cell differentiation subtype, with only significant ( $P < 0.05$ ) results shown. The colour under each cell phenotype bar chart shows its representation in the pie charts. Data are from C ( $n = 56$ ), MS ( $n = 46$ ), ME-M ( $n = 120$ ), and ME-S ( $n = 21$ ). \* $P < 0.05$ , \*\* $P < 0.01$ , \*\*\* $P < 0.001$ , \*\*\*\* $P < 0.0001$ .



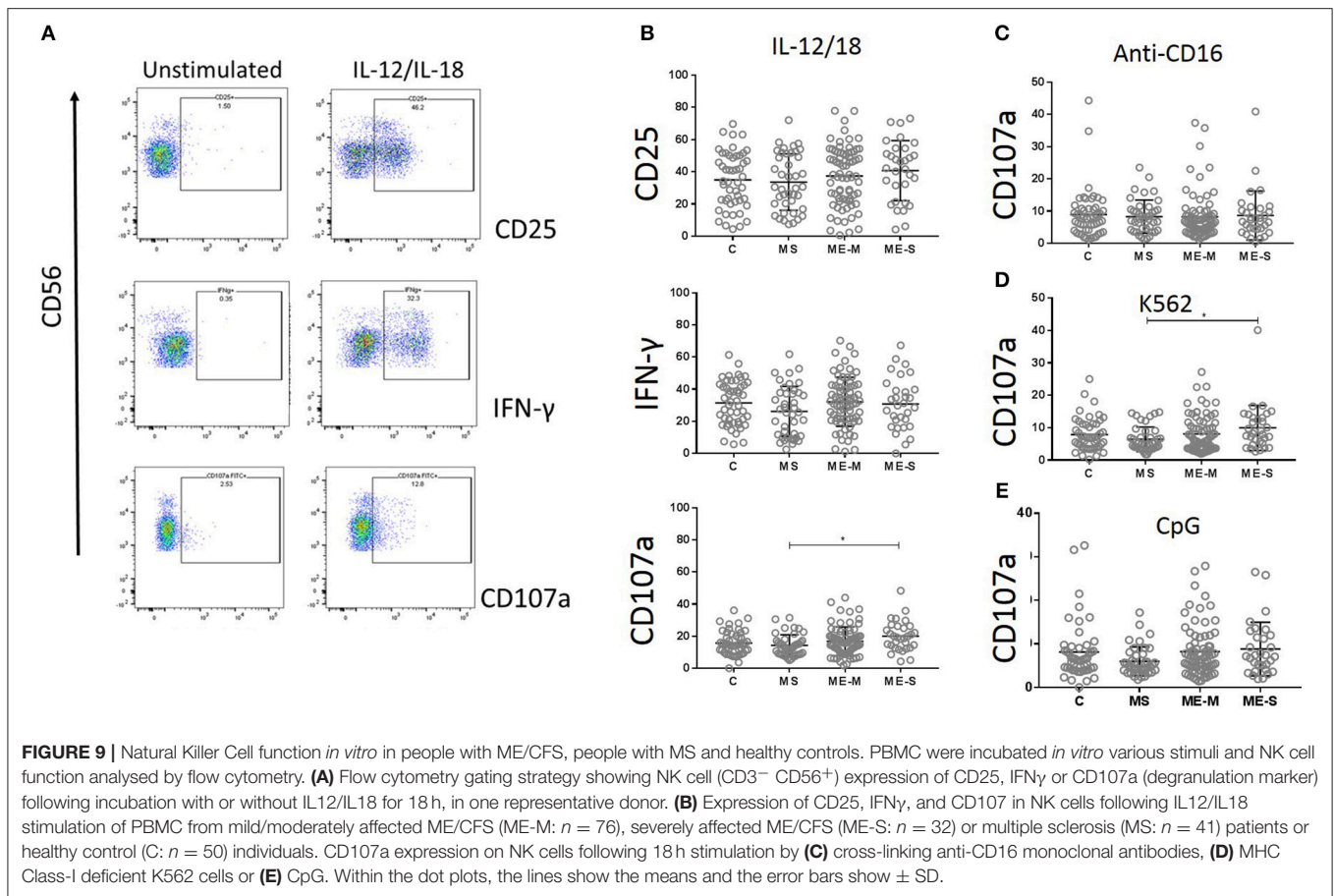
**FIGURE 6 |** Mucosal Associated Invariant T cells in peripheral blood of people with ME/CFS, people with MS and healthy controls. By flow cytometry, within the CD3<sup>+</sup>  $\gamma\delta$ TCR<sup>-</sup> T cell population (A), MAIT cells were identified as V $\alpha$ 7.2<sup>+</sup>CD161<sup>++</sup> in PBMC (B). MAIT cells were further characterised based on CD4<sup>+</sup> or CD8<sup>+</sup> expression (C). (D) The proportion of T cells which were MAIT cells in PBMC from mild-moderate ME/CFS (ME-M), severely affected ME/CFS (ME-S), multiple sclerosis (MS), and healthy controls (C) is shown. (E) The proportion of MAIT cells which were CD8<sup>+</sup> is shown for each individual. (A–C) Data from one representative severely affected ME/CFS patient. (D,E) Data are from C (n = 56), MS (n = 46), ME-M (n = 120), and ME-S (n = 21). Clinical groups were compared by Kruskal-Wallis test for non-parametric data: \*\*P < 0.01, \*\*\*P < 0.001, \*\*\*\*P < 0.0001. (F) ROC curve analysis of proportions of the CD3<sup>+</sup>  $\gamma\delta$ TCR<sup>-</sup> T cell population which were MAIT cells for the different patient groups relative to the Healthy Controls. (G) ROC curve analysis of proportions of MAIT cells which were CD8<sup>+</sup> for the different patient groups relative to the Healthy Controls. AUC, Area Under the Curve.



in NK cell differentiation status and cytokine production in study participants across all clinical groups who were CMV-positive, detectable after the 18 h culture period. CMV has a dramatic

effect on NK cells (28) and it is possible that undetermined CMV status was a confounding factor underlying previous reports of NK cell dysfunction in ME/CFS. Importantly, the differences





we observed in MAIT cells and CD8<sup>+</sup> T cells in PWME were consistent when CMV serostatus was adjusted for.

ME/CFS is often considered to be triggered by an acute viral infection, and various herpes virus family members have been implicated (41). Here, we found no difference in the prevalence of seropositivity for six herpes viruses (CMV, EBV, HSV-1, HSV-2, VZV, HHV6) between PWME and healthy controls, nor in the concentration of anti-virus antibodies present. Nonetheless, the possibility remains that herpes viruses may be important in ME/CFS pathogenesis, that virus reactivation may trigger a worsening of symptoms, and that measurement of antibody titres to alternative viral antigens might provide a more relevant measure (42). Thus, although the seroprevalence of EBV did not differ among the MS patients, PWME or healthy controls, MS patients did have significantly higher titres of antibodies to EBV Viral Capsid Antigen, in line with previous reports [reviewed by Burnard et al. (43)] and potentially implying recent virus reactivation.

The increased frequency of CD8<sup>+</sup> MAIT cells in those severely affected by ME/CFS observed here has not previously been reported. Notably, a small number of severely affected ME/CFS patients had exceedingly high frequencies of these cells. Peripheral MAIT cell frequencies in healthy volunteers have been reported to increase over 2-fold following acute exercise (44), suggesting that the peripheral immune phenotype at rest in some

PWME resembles a post-exercise state. The more remarkable finding, however, was the overwhelming predominance of CD8<sup>+</sup> cells among the MAIT cell population in severely affected PWME. Moreover, although overall frequencies of MAIT cells did not differ between MS patients and healthy controls, their MAIT cells were also highly enriched for CD8<sup>+</sup> cells, confirming a previous report of high frequencies of CD8<sup>+</sup> CD161<sup>+</sup> T cells in MS patients (45). MAIT cells are innate-like T cells which recognise vitamin B-related antigens from microbes presented in the context of the MHC Class I-related molecule MR1 (46), and can also respond to cytokine stimulation. CD8<sup>+</sup> MAIT cells are able to kill infected cells via perforin/granzyme secretion and therefore have a protective role in microbial infection (47), but they have recently been implicated in the pathology of various non-infectious diseases such as cancer (48), colitis (49) and autoimmune diseases such as rheumatoid arthritis (50) and type 1 diabetes (51). In MS, these cells are described as pro-inflammatory and pathogenic. It is possible that the increase in MAIT cell frequency in some PWME is driven by changes in the gut microbiome (52) or alternatively could be related to other, as yet uncharacterised, changes in the immune system. In future studies, the functional phenotype of these CD8<sup>+</sup> MAIT cells in PWME could be ascertained, to determine if they may be contributing to disease pathology. The gut microbiome in ME/CFS should also be investigated further. Eventually

a biomarker signature might be developed for diagnosis of ME/CFS: in this context the proportion of CD8<sup>+</sup> MAIT cells in peripheral blood had modest discriminatory capacity alone, but might contribute to a combined factor signature. In this regard, testing of candidate biomarker signatures in large, independent, longitudinal validation cohorts will be vital, especially considering historically mixed reports of biological phenotype in ME/CFS.

The reason for the altered frequencies of various intermediately differentiated CD8<sup>+</sup> T cells in ME/CFS is unclear, and is likely to be functionally linked with the concomitant reduction in effector memory CD8<sup>+</sup> T cells (53). As there was no difference in the frequency of naïve or terminally differentiated CD8<sup>+</sup> T cells, it is possible that in ME/CFS the cells are rapidly driven through this intermediate stage to terminal differentiation and are then lost by cell death. The study design did not allow us to determine the interaction between the enhanced MAIT cell compartment and the altered overall T cell differentiation status: this can be addressed in future studies. The driver behind the faster transition towards terminal differentiation could be ongoing antigenic stimulation, possibly due to persistent viral infection or autoimmunity. The reduced effector memory T cell populations in PWME may in part explain the increased susceptibility to infection which is commonly reported in ME/CFS.

The proportions of CD4<sup>+</sup> and CD8<sup>+</sup> T cells were normal in PWME. However, in MS patients there was a significant skew towards increased proportions of CD4<sup>+</sup> T cells, lower CD8<sup>+</sup> T cells and therefore a raised CD4<sup>+</sup>/CD8<sup>+</sup> T cell ratio. Previously, there have been mixed reports in PWME, with increased (54) or decreased (55, 56) CD4<sup>+</sup>/CD8<sup>+</sup> T cell ratios observed, although heterogeneity is commonly reported and may be confounded by CMV infection status.

In summary, in a large cohort of very carefully phenotyped people living with ME/CFS, we have observed significant differences in peripheral T lymphocyte phenotypes but have been unable to confirm previous reports of distorted NK cell phenotype or function. Importantly, we excluded from this study individuals with evidence of ongoing acute infection, those with obvious comorbidities and those with a history of taking immunomodulatory medications. We have also confirmed that CMV seropositivity has a major impact on the phenotype and function of NK cells and T cells, underlining the paramount importance of assessing CMV and other herpes virus infection status in studies of human immune status. Any of these factors may have confounded the analysis of previous studies. The most striking finding of this study, the increased proportion of circulating MAIT cells in people severely affected by ME/CFS, and the very high proportion of CD8<sup>+</sup> MAIT cells in severely affected PWME and in MS patients, warrants further investigation. This observation also underlines the importance of including non-fatigued individuals with other incapacitating illnesses (such as MS patients) in studies of ME/CFS to control for the physiological effects of reduced levels of physical activity. Although one might debate whether MS patients are the most appropriate such group, the very large immunological database for MS does facilitate benchmarking of

observations and may provide insight into disease pathogenesis pathways in ME/CFS by comparison with a more extensively documented disease.

## DATA AVAILABILITY

The datasets generated for this study are available on request to the corresponding author.

## ETHICS STATEMENT

This study was carried out in accordance with the recommendations of The London School of Hygiene & Tropical Medicine (LSHTM) Research Ethics Committee (Ref. 6123) and the National Research Ethics Service (NRES) London-Bloomsbury Research Ethics Committee (REC ref. 11/10/1760, IRAS ID: 77765), with written informed consent from all subjects. All subjects gave written informed consent in accordance with the Declaration of Helsinki. The protocol was approved by the LSHTM Research Ethics Committee and the NRES London-Bloomsbury Research Ethics Committee.

## AUTHOR CONTRIBUTIONS

JC, HD, LN, EL, and ER devised the study and obtained funding. EL, EB, LN, and CK designed and implemented the clinical study. CK conducted the clinical assessments and collected samples. JC, HD, and ER designed and implemented the laboratory studies. EK, J-SL and A-SW conducted the laboratory assays. JC, EK, NS, EL, and ER analysed the data. JC, NS, LN, EL, and ER wrote the manuscript. All authors reviewed and approved the final draft of the manuscript.

## ACKNOWLEDGMENTS

We thank all the study participants for their time and energy and for donating their blood to the UK ME/CFS Biobank (UKMEB). We also thank the support from the charities The ME Association, Action for ME, and ME Research UK, as well as a private donor, who funded the UKMEB start-up and to the ME Association for continued funding. We thank Prof. Lauren B. Krupp, who generously granted us permission to use her validated Fatigue Severity Scale. We thank Steven Smith for advice on flow cytometry analysis. Research reported in this paper was mainly supported by the National Institute of Allergy and Infectious Diseases (NIAID) of the National Institutes of Health (NIH) under Award Number: R01AI103629. NS acknowledges funding from Fundação para a Ciência e Tecnologia, Portugal (grant ref. UID/MAT/00006/2013). The content is solely the responsibility of the authors and does not necessarily represent the official views of the NIH.

## SUPPLEMENTARY MATERIAL

The Supplementary Material for this article can be found online at: <https://www.frontiersin.org/articles/10.3389/fimmu.2019.00796/full#supplementary-material>

## REFERENCES

- Fukuda K, Straus SE, Hickie I, Sharpe MC, Dobbins JG, Komaroff A. The chronic fatigue syndrome: a comprehensive approach to its definition and study. International chronic fatigue syndrome study group. *Ann Intern Med.* (1994) 121:953–9. doi: 10.7326/0003-4819-121-12-199412150-00009
- Carruthers B, Jain AK, De Meirleir KL, Peterson DL, Klimas NG, Lerner AM, et al. Myalgic encephalomyelitis/chronic fatigue syndrome: clinical working case definition, diagnostic and treatment guidelines a consensus document. *J Chronic Fat Syndr.* (2003) 11:7–115. doi: 10.1300/J092v11n01\_02
- Nacul LC, Lacerda EM, Campion P, Pheby D, Drachler Mde L, Leite JC, et al. The functional status and well being of people with myalgic encephalomyelitis/chronic fatigue syndrome and their carers. *BMC Public Health.* (2011) 11:402. doi: 10.1186/1471-2458-11-402
- Kingdon CC, Bowman EW, Curran H, Nacul L, Lacerda EM. Functional status and well-being in people with myalgic encephalomyelitis/chronic fatigue syndrome compared with people with multiple sclerosis and healthy controls. *Pharmacoecon Open.* (2018) 2:381–92. doi: 10.1007/s41669-018-0071-6
- Lorusso L, Mikhaylova SV, Capelli E, Ferrari D, Ngonga GK, Ricevuti G. Immunological aspects of chronic fatigue syndrome. *Autoimmun Rev.* (2009) 8:287–91. doi: 10.1016/j.autrev.2008.08.003
- De Carvalho Leite JC, De LDM, Killett A, Kale S, Nacul L, McArthur M, et al. Social support needs for equity in health and social care: a thematic analysis of experiences of people with chronic fatigue syndrome/myalgic encephalomyelitis. *Int J Equity Health.* (2011) 10:46. doi: 10.1186/1475-9276-10-46
- Mensah FKE, Bansal AS, Ford B, Cambridge G. Chronic fatigue syndrome and the immune system: Where are we now? *Neurophysiol Clin.* (2017) 47:131–8. doi: 10.1016/j.neucli.2017.02.002
- Institute of Medicine (IOM). *Beyond Myalgic Encephalomyelitis/Chronic Fatigue Syndrome: Redefining an Illness* (Washington, DC: The National Academies Press) (2015).
- Shepherd C, Chaudhuri A. *ME/CFS/PVFS: An Exploration of the Key Clinical Issues*. Buckingham: The ME Association (2018).
- Nacul L, Lacerda EM, Kingdon CC, Curran H, Bowman EW. How have selection bias and disease misclassification undermined the validity of myalgic encephalomyelitis/chronic fatigue syndrome studies? *J Health Psychol.* doi: 10.1177/1359105317695803. Available online at: [https://journals.sagepub.com/doi/full/10.1177/1359105317695803?url\\_ver=Z39.88-2003&rfr\\_id=ori%3Arid%3Aacrossref.org&rfr\\_dat=cr\\_pub%3Dpubmed](https://journals.sagepub.com/doi/full/10.1177/1359105317695803?url_ver=Z39.88-2003&rfr_id=ori%3Arid%3Aacrossref.org&rfr_dat=cr_pub%3Dpubmed)
- Nijs J, Nees A, Paul L, De Kooning M, Ickmans K, Meeus M, et al. Altered immune response to exercise in patients with chronic fatigue syndrome/myalgic encephalomyelitis: a systematic literature review. *Exerc Immunol Rev.* (2014) 20:94–116. Available online at: <http://eir-isei.de/2014/eir-2014-094-article.pdf>
- Blundell S, Ray KK, Buckland M, White PD. Chronic fatigue syndrome and circulating cytokines: a systematic review. *Brain Behav Immun.* (2015) 50:186–95. doi: 10.1016/j.bbi.2015.07.004
- Clark LV, Buckland M, Murphy G, Taylor N, Vleck V, Mein C, et al. Cytokine responses to exercise and activity in patients with chronic fatigue syndrome: case-control study. *Clin Exp Immunol.* (2017) 190:360–71. doi: 10.1111/cei.13023
- Orange JS. Natural killer cell deficiency. *J Allergy Clin Immunol.* (2013) 132:515–25. doi: 10.1016/j.jaci.2013.07.020
- Newman KC, Riley EM. Whatever turns you on: accessory-cell-dependent activation of NK cells by pathogens. *Nat Rev Immunol.* (2007) 7:279–91. doi: 10.1038/nri2057
- Nielsen CM, Wolf AS, Goodier MR, Riley EM. Synergy between common gamma chain family cytokines and IL-18 potentiates innate and adaptive pathways of NK cell activation. *Front Immunol.* (2016) 7:101. doi: 10.3389/fimmu.2016.00101
- Racciatti D, Dalessandro M, Delle Donne L, Falasca K, Zingariello P, Paganelli R, et al. Study of immune alterations in patients with chronic fatigue syndrome with different etiologies. *Int J Immunopathol Pharmacol.* (2004) 17:57–62. doi: 10.1177/039463200401705210
- Robertson MJ, Schacterle RS, Mackin GA, Wilson SN, Bloomingdale KL, Ritz J, et al. Lymphocyte subset differences in patients with chronic fatigue syndrome, multiple sclerosis and major depression. *Clin Exp Immunol.* (2005) 141:326–32. doi: 10.1111/j.1365-2249.2005.02833.x
- Caligiuri M, Murray C, Buchwald D, Levine H, Cheney P, Peterson D, et al. Phenotypic and functional deficiency of natural killer cells in patients with chronic fatigue syndrome. *J Immunol.* (1987) 139:3306–13.
- Hardcastle SL, Brenu EW, Johnston S, Nguyen T, Huth T, Wong N, et al. Characterisation of cell functions and receptors in chronic fatigue syndrome/myalgic encephalomyelitis (CFS/ME). *BMC Immunol.* (2015) 16:35. doi: 10.1186/s12865-015-0101-4
- Fletcher MA, Zeng XR, Maher K, Levis S, Hurwitz B, Antoni M, et al. Biomarkers in chronic fatigue syndrome: evaluation of natural killer cell function and dipeptidyl peptidase IV/CD26. *PLoS ONE.* (2010) 5:e10817. doi: 10.1371/journal.pone.0010817
- Theorell J, Bileviciute-Ljungar I, Tesi B, Schlums H, Johnsgaard MS, Asadi-Azarbaijani B, et al. Unperturbed cytotoxic lymphocyte phenotype and function in myalgic encephalomyelitis/chronic fatigue syndrome patients. *Front Immunol.* (2017) 8:723. doi: 10.3389/fimmu.2017.00723
- Rivas JL, Palencia T, Fernandez G, Garcia M. Association of T and NK cell phenotype with the diagnosis of myalgic encephalomyelitis/chronic fatigue syndrome (ME/CFS). *Front Immunol.* (2018) 9:1028. doi: 10.3389/fimmu.2018.01028
- Maher KJ, Klimas NG, Fletcher MA. Chronic fatigue syndrome is associated with diminished intracellular perforin. *Clin Exp Immunol.* (2005) 142:505–11. doi: 10.1111/j.1365-2249.2005.02935.x
- Huth TK, Brenu EW, Ramos S, Nguyen T, Broadley S, Staines D, et al. Pilot study of natural killer cells in chronic fatigue syndrome/myalgic encephalomyelitis and multiple sclerosis. *Scand J Immunol.* (2016) 83:44–51. doi: 10.1111/sji.12388
- Brenu EW, Van Driel ML, Staines DR, Ashton KJ, Hardcastle SL, Keane J, et al. Longitudinal investigation of natural killer cells and cytokines in chronic fatigue syndrome/myalgic encephalomyelitis. *J Transl Med.* (2012) 10:88. doi: 10.1186/1479-5876-10-88
- Mihaylova I, Deruyter M, Rummens JL, Bosmans E, Maes M. Decreased expression of CD69 in chronic fatigue syndrome in relation to inflammatory markers: evidence for a severe disorder in the early activation of T lymphocytes and natural killer cells. *Neuro Endocrinol Lett.* (2007) 28:477–83. Available online at: <http://www.nel.edu/decreased-expression-of-cd69-in-chronic-fatigue-syndrome-in-relation-to-inflammatory-markers-evidence-for-a-severe-disorder-in-the-early-activation-of-t-lymphocytes-and-natural-killer-cells-1570/>
- Lopez-Verges S, Milush JM, Schwartz BS, Pando MJ, Jarjoura J, York VA, et al. Expansion of a unique CD57(+)NKG2Chi natural killer cell subset during acute human cytomegalovirus infection. *Proc Natl Acad Sci USA.* (2011) 108:14725–32. doi: 10.1073/pnas.1110900108
- Saghafian-Hedengren S, Sohlberg E, Theorell J, Carvalho-Queiroz C, Nagy N, Persson JO, et al. Epstein-Barr virus coinfection in children boosts cytomegalovirus-induced differentiation of natural killer cells. *J Virol.* (2013) 87:13446–55. doi: 10.1128/JVI.02382-13
- Krupp LB, Larocca NG, Muir-Nash J, Steinberg AD. The fatigue severity scale. Application to patients with multiple sclerosis and systemic lupus erythematosus. *Arch Neurol.* (1989) 46:1121–3. doi: 10.1001/archneur.1989.00520460115022
- Lacerda EM, Bowman E, Cliff JM, Kingdon CC, King E, Lee J, et al. The UK ME/CFS biobank for biomedical research on myalgic encephalomyelitis/chronic fatigue syndrome (ME/CFS) and multiple sclerosis. *Open J Biosour.* (2017) 4:4. doi: 10.5334/ojb.28
- Goodier MR, White MJ, Darboe A, Nielsen CM, Goncalves A, Bottomley C, et al. Rapid NK cell differentiation in a population with near-universal human cytomegalovirus infection is attenuated by NKG2C deletions. *Blood.* (2014) 124:2213–22. doi: 10.1182/blood-2014-05-576124
- Roederer M, Nozzi JL, Nason MC. SPICE: exploration and analysis of post-cytometric complex multivariate datasets. *Cytometry A.* (2011) 79:167–74. doi: 10.1002/cyto.a.21015
- Horowitz A, Behrens RH, Okell L, Fooks AR, Riley EM. NK cells as effectors of acquired immune responses: effector CD4+ T cell-dependent

- activation of NK cells following vaccination. *J Immunol.* (2010) 185:2808–18. doi: 10.4049/jimmunol.1000844
35. Goodier MR, Lusa C, Sherratt S, Rodriguez-Galan A, Behrens R, Riley EM. Sustained immune complex-mediated reduction in CD16 expression after vaccination regulates NK cell function. *Front Immunol.* (2016) 7:384. doi: 10.3389/fimmu.2016.00384
  36. Wagstaffe HR, Nielsen CM, Riley EM, Goodier MR. IL-15 promotes polyfunctional NK cell responses to influenza by boosting IL-12 production. *J Immunol.* (2018) 200:2738–47. doi: 10.4049/jimmunol.1701614
  37. R Core Team. *R: A Language and Environment for Statistical Computing.* (2013). Available online at: <http://www.R-project.org/> (accessed April 1, 2019).
  38. Dias J, Leeansyah E, Sandberg JK. Multiple layers of heterogeneity and subset diversity in human MAIT cell responses to distinct microorganisms and to innate cytokines. *Proc Natl Acad Sci USA.* (2017) 114:E5434–43. doi: 10.1073/pnas.1705759114
  39. Klenerman P, Oxenius A. T cell responses to cytomegalovirus. *Nat Rev Immunol.* (2016) 16:367–77. doi: 10.1038/nri.2016.38
  40. Hardcastle SL, Brenu EW, Johnston S, Nguyen T, Huth T, Ramos S, et al. Longitudinal analysis of immune abnormalities in varying severities of chronic fatigue syndrome/myalgic encephalomyelitis patients. *J Transl Med.* (2015) 13:299. doi: 10.1186/s12967-015-0653-3
  41. Morris G, Berk M, Walder K, Maes M. The putative role of viruses, bacteria, and chronic fungal biotoxin exposure in the genesis of intractable fatigue accompanied by cognitive and physical disability (2015). *Mol Neurobiol.* 53:2550–71. doi: 10.1007/s12035-015-9262-7
  42. Loebel M, Strohschein K, Giannini C, Koelsch U, Bauer S, Doeblis C, et al. Deficient EBV-specific B- and T-cell response in patients with chronic fatigue syndrome. *PLoS ONE.* (2014) 9:e85387. doi: 10.1371/journal.pone.0085387
  43. Burnard S, Lechner-Scott J, Scott RJ. EBV and MS: major cause, minor contribution or red-herring? *Mult Scler Relat Disord.* (2017) 16:24–30. doi: 10.1016/j.msard.2017.06.002
  44. Hanson ED, Danson E, Nguyen-Robertson CV, Fyfe JJ, Stepto NK, Bartlett DB, et al. Maximal exercise increases mucosal associated invariant T cell frequency and number in healthy young men. *Eur J Appl Physiol.* (2017) 117:2159–69. doi: 10.1007/s00421-017-3704-z
  45. Annibaldi V, Ristori G, Angelini DF, Serafini B, Mechelli R, Cannoni S, et al. CD161(high)CD8<sup>+</sup>T cells bear pathogenetic potential in multiple sclerosis. *Brain.* (2011) 134:542–54. doi: 10.1093/brain/awq354
  46. Keller AN, Corbett AJ, Wubben JM, Mccluskey J, Rossjohn J. MAIT cells and MR1-antigen recognition. *Curr Opin Immunol.* (2017) 46:66–74. doi: 10.1016/j.coi.2017.04.002
  47. Meierovics A, Yankelevich WJ, Cowley SC. MAIT cells are critical for optimal mucosal immune responses during *in vivo* pulmonary bacterial infection. *Proc Natl Acad Sci USA.* (2013) 110:E3119–28. doi: 10.1073/pnas.1302799110
  48. Zabijak L, Attencourt C, Guignant C, Chatelain D, Marcelo P, Marolleau JP, et al. Increased tumor infiltration by mucosal-associated invariant T cells correlates with poor survival in colorectal cancer patients. *Cancer Immunol Immunother.* (2015) 64:1601–8. doi: 10.1007/s00262-015-1764-7
  49. Serriari NE, Eoche M, Lamotte L, Lion J, Fumery M, Marcelo P, et al. Innate mucosal-associated invariant T (MAIT) cells are activated in inflammatory bowel diseases. *Clin Exp Immunol.* (2014) 176:266–74. doi: 10.1111/cei.12277
  50. Chiba A, Tajima R, Tomi C, Miyazaki Y, Yamamura T, Miyake S. Mucosal-associated invariant T cells promote inflammation and exacerbate disease in murine models of arthritis. *Arthritis Rheum.* (2012) 64:153–61. doi: 10.1002/art.33314
  51. Harms RZ, Lorenzo KM, Corley KP, Cabrera MS, Sarvetnick NE. Altered CD161 bright CD8<sup>+</sup> mucosal associated invariant T (MAIT)-like cell dynamics and increased differentiation states among juvenile type 1 diabetics. *PLoS ONE.* (2015) 10:e0117335. doi: 10.1371/journal.pone.0117335
  52. Powell N, Macdonald TT. Recent advances in gut immunology. *Parasite Immunol.* (2017) 39:e12430. doi: 10.1111/pim.12430
  53. Larbi A, Fulop T. From “truly naïve” to “exhausted senescent” T cells: when markers predict functionality. *Cytometry A.* (2014) 85:25–35. doi: 10.1002/cyto.a.22351
  54. Michalowska-Wender G, Wender M. Mononuclear subsets in the peripheral blood of multiple sclerosis patients in relation to results of brain gadolinium-enhancing imaging. *Folia Neuropathol.* (2006) 44:67–71. Available online at: <https://www.termedia.pl/Mononuclear-subsets-in-the-peripheral-blood-of-multiple-sclerosis-patients-in-relation-to-results-of-brain-gadolinium-8211-enhancing-imaging,20,5690,1,1.html>
  55. Ayers CL, Mendoza JP, Sinha S, Cunnusamy K, Greenberg BM, Frohman EM, et al. Modulation of immune function occurs within hours of therapy initiation for multiple sclerosis. *Clin Immunol.* (2013) 147:105–19. doi: 10.1016/j.clim.2013.02.015
  56. Arneth B. Activated CD4<sup>+</sup> and CD8<sup>+</sup> T cell proportions in multiple sclerosis patients. *Inflammation.* (2016) 39:2040–4. doi: 10.1007/s10753-016-0441-0

**Conflict of Interest Statement:** The authors declare that the research was conducted in the absence of any commercial or financial relationships that could be construed as a potential conflict of interest.

Copyright © 2019 Cliff, King, Lee, Sepúlveda, Wolf, Kingdon, Bowman, Dockrell, Nacul, Lacerda and Riley. This is an open-access article distributed under the terms of the Creative Commons Attribution License (CC BY). The use, distribution or reproduction in other forums is permitted, provided the original author(s) and the copyright owner(s) are credited and that the original publication in this journal is cited, in accordance with accepted academic practice. No use, distribution or reproduction is permitted which does not comply with these terms.