

In Silico, In Vitro and In Vivo Toxicological Assessment of BPP-BrachyNH₂, A Vasoactive Proline-Rich Oligopeptide from *Brachycephalus ephippium*

Daniel D. R. Arcanjo^{1,2} · Ana Carolina Mafud³ · Andreeane G. Vasconcelos¹ · José Couras da Silva-Filho² · Maurício P. M. Amaral² · Lucas M. Brito² · Marcelo P. Bemquerer⁴ · Selma A. S. Kückelhaus⁵ · Alexandra Plácido⁶ · Cristina Delerue-Matos⁶ · Nuno Vale⁷ · Yvonne P. Mascarenhas³ · Fernando Aécio A. Carvalho² · Aldeidia P. Oliveira² · José Roberto Souza Almeida Leite^{1,5,7}

Abstract BPP-BrachyNH₂ is a proline-rich oligopeptide (PRO) firstly identified in skin secretion of the frog *Brachycephalus ephippium*, which possess in vitro inhibitory activity of angiotensin-I converting enzyme (ACE) and endothelium-dependent vasorelaxant activity. Considering its potential application in the treatment of cardiovascular diseases, the present work assessed the toxicological profile of the BPP-BrachyNH₂. The in silico toxicity prediction was performed from the best model obtained through the optimization of the FASTA query peptide. This prediction study revealed that BPP-BrachyNH₂ induced high predicted LD₅₀ values for both humans and rats, and then is well-tolerated in the recommended range. The MTT assay was applied for the in vitro cytotoxic evaluation in murine macrophages. In this assay, a decrease of cell viability was not observed. The in vivo acute toxicological study was performed after the intraperitoneal administration of BPP-BrachyNH₂ at doses of 5 and 50 mg/kg. After intraperitoneal administration, no death, alterations in behavioral parameters or weight gain curve was observed, as well as none in the serum biochemical parameters, and gross pathological and histopathological analyses. These observations demonstrate an acceptable safety profile for BPP-BrachyNH₂, leading towards further studies focused on investigation of pharmacological and therapeutical applications for this peptide.

Keywords

Cytotoxicity

MTT

In silico

pkCSM

Proline-rich oligopeptide

Toxicological

Introduction

Proline-rich oligopeptides (PROs) represent a class of peptides firstly isolated from the *Bothrops jararaca* venom, which present proline residues at their C-terminal portions and inhibitory activity of the angiotensin-I converting enzyme (ACE) as well as the potentiation of bradykinin effects (Camargo et al. 2012; Morais et al. 2013). Furthermore, secretions and venoms from other animals, such as amphibians and scorpions have also been described as a potential source of PROs with potential applications (Conceição et al. 2007; Verano-Braga et al. 2008).

¹ Núcleo de Pesquisa em Biodiversidade e Biotecnologia, BIOTEC, Campus Ministro Reis Velloso – CMRV, Universidade Federal do Piauí, UFPI, Parnaíba, PI, Brazil

² Núcleo de Pesquisas em Plantas Medicinais, NPPM, Universidade Federal do Piauí – UFPI, Teresina, PI 64049-550, Brazil

³ Instituto de Física de São Carlos – IFSC, Universidade de São Paulo – USP, São Carlos, SP, Brazil

⁴ Laboratório de Espectrometria de Massa, EMBRAPA Recursos Genéticos e Biotecnologia, Brasília, DF, Brazil

⁵ Area Morfologia, Faculdade de Medicina, Universidade de Brasília (UnB), Campus Universitário Darcy Ribeiro, Asa Norte, Brasília, DF CEP 70910-900, Brazil

⁶ REQUIMTE/LAQV, Instituto Superior de Engenharia do Instituto Politécnico do Porto, Rua Dr.

António Bernardino de Almeida, 431, 4200-072 Porto, Portugal

⁷ UCIBIO/REQUIMTE, Departamento de Química e Bioquímica, Faculdade de Ciências da Universidade do Porto, Rua do Campo Alegre, 687, 4169-007 Porto, Portugal

Fig. 1 MS spectra of BPP-BrachyNH₂, [M+H]⁺ = 906.93

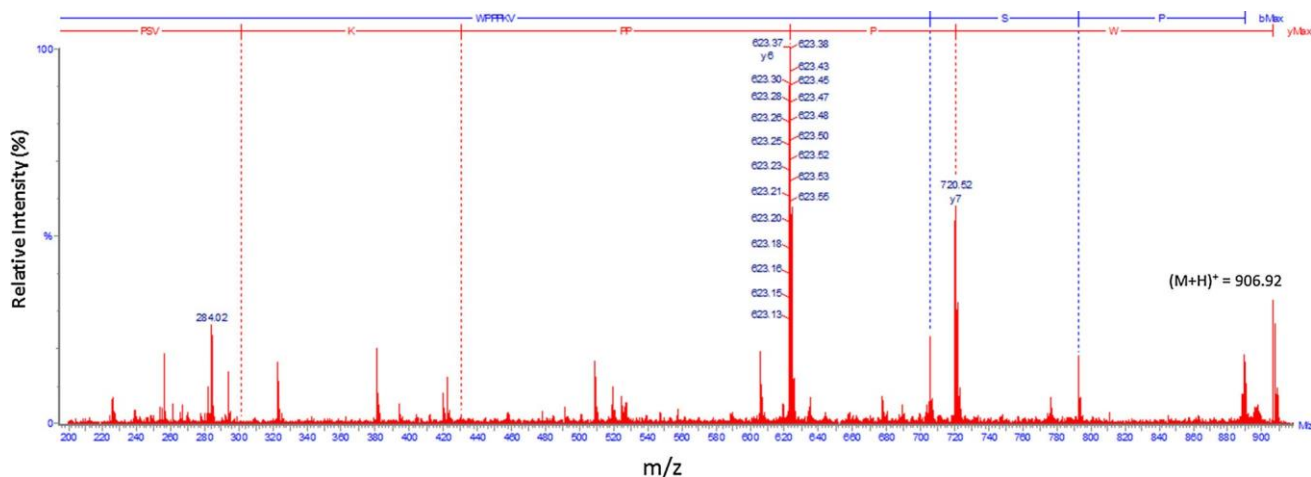
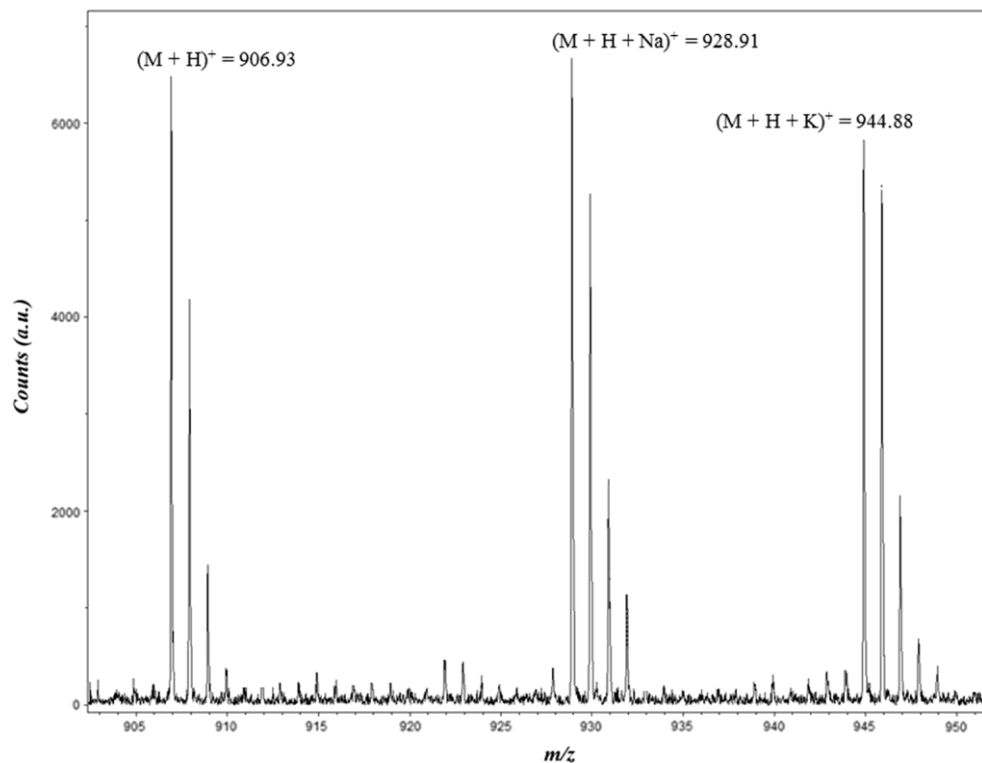


Fig. 2 MS/MS spectra of BPP-BrachyNH₂, [M+H]⁺ = 906.92, acquired in an UltrafleXtreme MALDI-TOF/TOF

Interestingly, the peptide BPP-BrachyNH₂ (Figs. 1, 2) obtained from the skin secretion of the frog *Brachycephalus ephippium* induces endothelium-dependent vasorelaxant effect mediated by nitric oxide and in vitro inhibitory activity of ACE (Arcanjo et al. 2015).

The application of in silico (computer-based) modeling in the search for lead compounds is a promising endeavor in drug discovery, since it often accelerates the process and cuts down costs (DiMasi et al. 2003). Virtual screening methods are useful because, in principle, they narrow down the number of compounds to be actually tested in

biological assays. This is practicable when the in silico scoring methods are sufficiently able to discriminate between active and inactive ones (Kubinyi 1998; Klebe 2006).

Acute toxicity studies in animals are commonly applied in order to attend a sort of requirements related to controlled risks for human health and the environment. An estimated lethal dose in 50% of animals in an experiment (LD₅₀) usually accomplishes the classification requirements for all regulatory authorities in chemicals, pharmaceuticals, consumer goods in general and pesticides. The

information obtained in these studies are useful to set doses in repeat-dose studies, and preliminarily identify some possible target organ of toxicological effects, as well as to provide relevant information for selection of doses in Phase 1 studies or overdose in humans (CDER 1996; OECD 2002a).

Considering the potential therapeutic applications of BPP-BrachyNH₂, its toxicological profile was assessed by in silico, in vitro and in vivo approaches, and reported in this study.

Experimental

Synthesis, Purification and Characterization of BBP-Brachy-NH₂

The synthesis of the octapeptide BPP-BrachyNH₂ (WPPPKVSP) was carried out manually, with a standard Fmoc (*N*-(9-fluorenyl)methoxycarbonyl) chemistry (Fields and Noble 1990) starting from a Rink-amide-MBHA resin (0.59 mmol/g, Peptides International, Louisville, KY, USA). F-moc-protected amino acids (Peptides International, Louisville, KY, USA) were used in four-fold molar excess relative to the nominal scale of synthesis (1.2 mmol). Couplings were performed with 1,3-diisopropylcarbodiimide/ethyl 2-cyano-2-(hydroxyimino) acetate (DIC/Oxyma) in *N,N*-dimethylformamide (DMF) for 2–3 h. Side chain protected groups were *tert*-butyl for Ser, and Boc for Lys and Trp. Amino groups deprotections were conducted by 4-methylpiperidine/DMF (1:4, v:v) for 20–30 min. Removal of side chain protection and cleavage of the peptide from the resin were performed by the use of 10.0 mL TFA:water:tioanisol:ethanodithiol:triisopropylsilane (86:5.0:5.0:2.5:1.0, v:v:v:v) with addition of 1 g phenol for 90 min at room temperature under shaking. After solvent evaporation under nitrogen, the peptide was precipitated by addition of cold diisopropyl ether, collected by filtration and washed four times with cold diisopropyl ether. Extraction was performed with 200 mL H₂O:ACN (1:1, v:v) and crude peptide was lyophilized. Purification was performed using a preparative HPLC system (LaPrep Sigma), with LP1100 Quaternary LPG pump injection with fractionation valve. The elution conditions consisted of a linear gradient from 10 to 30% of acetonitrile in water. The eluent was monitored at the absorbance of 220 nm, and products corresponding to absorbing peaks were collected. Purity and molecular mass determination of the synthetic peptide (BPP) were performed using a MALDI-TOF/TOF mass spectrometer (UltrafleXtreme, Bruker Daltonics) operating under LIFT™ mode for MS/MS experiments (Figs. 1, 2). Purified peptide was obtained with 96% based on starting resin. Stock peptide solutions were prepared in

water and their concentrations were determined according to tryptophan molar absorptivity (5550 M⁻¹/cm) at 280 nm (Arcanjo et al. 2015).

In Silico Toxicity Prediction

The toxicity analysis were performed by using pkCSM (Pires et al. 2015a), an in silico tool web server maintained by VLS3D (Cambridge University). The entry was the best model obtained through the optimization of the FASTA query peptide by AMMP (Fig. 3), a full-featured molecular dynamics program to manipulate both small molecules and macromolecules including proteins, nucleic acids and other polymers (Pedretti et al. 2004). The structure received the Gasteiger charges and AMBER field force and submitted to minimization using a genetic algorithm, through 3000 steps. The conformational search was realized by using the Boltzmann jump method, with flexible and psi torsions, at 300 K and RMSD equal to 60.00. The Gibbs free energy to the best conformer generated was calculated through Swiss-PDBViewer (Kaplan and Littlejohn 2001). Other physico-chemical properties were also calculated, such as molecular weights (MW), lipophilicity (logP), rotatable bonds (NRB), polar surface area (PSA), number of hydrogen bond acceptors (HBA) and number of hydrogen bond donors (HBD).

Animals

Swiss and BALB/c female mice (25–30 g, 2 months) were used. The animals were maintained throughout the study period at 12 h light/dark cycle and temperature of 23 ± 2 °C, with free access to water and food (Purina-

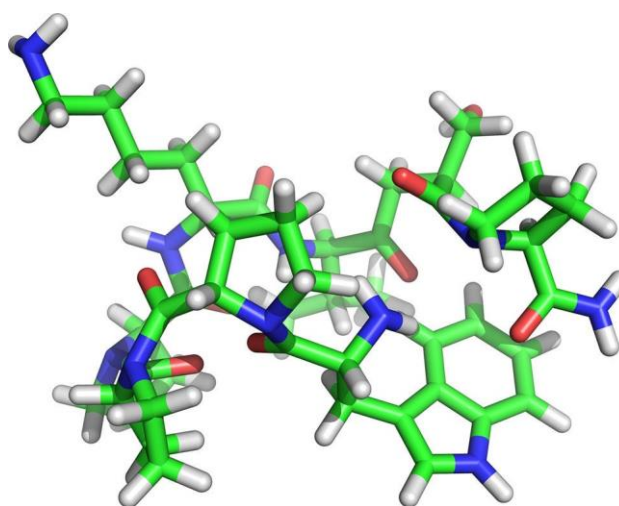


Fig. 3 Best optimized conformation of the peptide BPP-BrachyNH₂ in solution. The molecular physicochemical properties are described as follows: MW (g/mol) = 306.419; LogP = 2.266; NRB = 20; HBA = 11; HBD = 7; PSA = 380.105; and Gibbs free energy = 414.412 kJ/mol

Nestlé, São Paulo, SP, Brazil). The experimental procedures were performed according to recommendations of the Organization for Economic Co-operation and Development (OECD), and performed with approval by the Ethics Committee for Animal Experimentation from the Federal University of Piauí, Brazil (permission no. 008/2012).

Obtention and Cultive of Murine Peritoneal Macrophages

Peritoneal macrophages were obtained from male BALB/c mice. Three days after intraperitoneal administration of 1.5 mL of 3.0% thioglycollate, animals were euthanized, and immersed in 70% alcohol for 1 min. Then, 8 mL of sterile PSS was added in the peritoneal cavity, and the solution containing peritoneal macrophages was aspirated and transferred to a sterile tube, and then submitted to two centrifugations at 1500 rpm and 4 °C during 10 min, with repeated washings with sterile saline (0.9% NaCl). Afterwards, the supernatant was discarded and the cells re-suspended in 2 mL of RPMI 1640 medium supplemented with fetal bovine serum (10% FBS), penicillin (10,000 IU/mL), and streptomycin (10 mg/mL). The counting of viable macrophages was carried out in a Neubauer chamber and Blue Trypan staining, for analysis of cell viability (Rodrigues et al. 2015).

In Vitro Cell Viability of Murine Macrophages by MTT Assay

The evaluation of the cytotoxic activity of BPP-BrachyNH₂ in BALB/c murine macrophages was performed by MTT assay. Briefly, macrophages (1 × 10⁶/well) were incubated in 96-well plates with 100 μL of RPMI 1640 medium (Sigma, St. Louis, USA) at 37 °C and 5% CO₂ during 4 h. The BPP-BrachyNH₂ was incubated at different concentrations (10⁻¹²–10⁻⁵ M) during 48 h, and 10 μL of MTT (3-[4,5-dimethylthiazol-2-yl]-2,5-diphenyltetrazolium bromide) was added in each well from a stock solution at 5 mg/mL in PBS, and was incubated during 4 h. Rightly after, the supernatant was discarded and 100 μL of DMSO was added to each well. The plate was stirred during 30 min in order to completely dissolve the formazan salt. The absorbances were read at 550 nm (absorbance microplate reader ELx800™, BioTek Instruments, USA). The results were expressed as CC₅₀ (mean cytotoxic concentration for 50% of the cells) with the confidence intervals calculated by non-linear regression (Rodrigues et al. 2013, 2015).

In Vivo Assessment of Acute Toxicity in Mice

The toxicological evaluation of BPP-BrachyNH₂ was performed based on the Acute Toxic Class Method (OECD no.

423), with modifications (OECD 2002b). Female Swiss mice were divided in three groups with three animals each, one control group intraperitoneally treated with saline (0.1 mL/10 g body weight), and two other groups intraperitoneally treated with BPP-BrachyNH₂ at doses of 5.0 and 50 mg/kg (5.5 and 55 μmol/kg), respectively. The doses were chosen based on previous studies with other PROs, where the highest active doses up to 0.75 μmol/kg (ca. 73-fold lower than the chosen doses) were reported (Camargo et al. 2012; Morais et al. 2013). After the first week of observations, the treatments were repeated on other three groups of three animals each according to the presence or absence of death, totaling six animals per treatment.

Evaluation of Clinical and Behavioral Parameters

After administration of BPP-BrachyNH₂, the animals were monitored during the first 8 h in order to observe the occurrence of death. After 24 h, the observation time for each group was around 30 min to 1 h. The animals were weighed daily, as well as clinical and behavioral parameters were evaluated according to the Guidance Document on the Recognition, Assessment and Use of Clinical Signs from OECD (OECD 2002c). The main evaluated endpoints are listed in Table 1.

Evaluation of Serum Biochemical Parameters

After 14 days of observation, animals were anesthetized with sodium thiopental (45 mg/kg), and then blood samples were collected from orbital plexus by a glass capillary tube and collecting tubes with coagulation activator and separator gel (Vacuette, Greiner Bio-One, Germany). The material was centrifuged at 3500 rpm during 10 min, and then the following biochemical parameters were evaluated: glucose, urea, creatinine, aspartate aminotransferase (AST), alanine aminotransferase (ALT), alkaline phosphatase (ALP), gamma-glutamyl transferase (GGT), lactate dehydrogenase (LDH), total cholesterol, and triglycerides. The tests were performed using commercial kits following the manufacturer's instructions (LABTEST Pleno; Labtest, Lagoa Santa, MG, Brazil).

Evaluation of Body and Relative Organ Weights

The animals were daily weighed in order to obtain the dose-effect curve. After 14 days, the animals were anesthetized and then euthanized with a lethal dose of sodium thiopental (100 mg/kg, i.p.). Right after, the organs (heart, lung, stomach, spleen, liver and kidneys) were removed for gross pathology analysis (texture, consistency and color). Then, the organs were weighed in order to calculate the relative weight, as follows:

Table 1 Computer-aided toxicity parameters and recommended ranges to oral active compounds

Model name	Unit	Preferred	Predicted value
Hepatotoxicity	Categorical	No	Yes
Skin sensitisation	Categorical	No	No
AMES toxicity	Categorical	No	No
Max. tolerated dose (human)	log mg/kg day	Up to 0.477	0.255
hERG I inhibitor	Categorical	To be interpreted relative to the bioactive concentration	No
hERG II inhibitor	Categorical	To be interpreted relative to the bioactive concentration	Yes
Oral rat acute toxicity (LD ₅₀)	mol/kg	To be interpreted relative to the bioactive concentration	2.694
Oral rat chronic toxicity (LOAEL)	log mg/kg day	To be interpreted relative to the bioactive concentration	3.547

Table 2 Clinical and behavioral signs assessed after acute administration of BPP-BrachyNH₂ at doses of 5.0 and 50 mg/kg i.p.

Evaluated signs	Time (min)				
	30	60	120	180	240
Stimulant					
Hyperactivity	0	0	0	0	0
Aggressiveness	0	0	0	0	0
Tremors	0	0	0	0	0
Convulsion	0	0	0	0	0
Piloerection	0	0	0	0	0
Depressive					
Ptosis	0	0	0	0	0
Sedation	0	0	0	0	0
Anesthesia	0	0	0	0	0
Ataxia	0	0	0	0	0
Righting reflex	0	0	0	0	0
Catonia	0	0	0	0	0
Analgesia	0	0	0	0	0
Loss of corneal reflex	0	0	0	0	0
Loss of auricular reflex	0	0	0	0	0
Autonomic nervous system-related					
Diarrhea	0	0	0	0	0
Constipation	0	0	0	0	0
Lacrimation	0	0	0	0	0
Salivation	0	0	0	0	0
Cyanosis	0	0	0	0	0
Others					
Ambulation	0	0	0	0	0
Self-cleaning	0	0	0	0	0
Climb	0	0	0	0	0
Vocalization	0	0	0	0	0
Abdominal writhes	0	0	0	0	0
Deaths	0	0	0	0	0

(0) Without effect

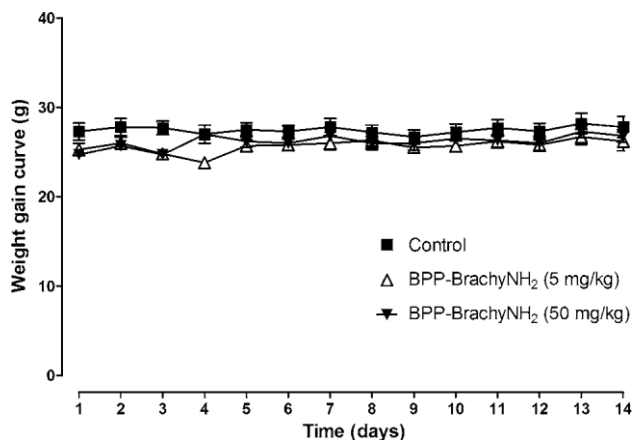


Fig. 4 Evolution of the weight gain of the animals from control group (filled square) or intraperitoneally treated with BPP-BrachyNH₂ at doses of 5.0 (triangle) and 50 (filled inverted triangle) mg/kg. Data represented as mean ± SEM, n = 6 animals per group

$\frac{1}{2} \text{body weight } \delta g \text{ } \delta t = \frac{\text{animal weight on the day of necropsy } \delta g \text{ } \delta t}{100}$

Histopathological Analyses

After euthanasia, the organs (liver, spleen, kidney and lung) were carefully removed and fixed in 10% formaldehyde solution during 72 h. For the histopathological analysis, the fixed organs were dehydrated in solutions with increasing concentrations of ethanol (70, 80, 90 or 99.9%), diaphanized in xylene (39), impregnated and embedded in warm paraffin at 60 °C. Then, the histological sections were obtained by a microtome (5 μm thick). Then, histological sections were submitted to the hematoxylin and eosin staining method. Histopathological analyzes were performed by a single observer and the photographic record made in digital camera coupled to an optical microscope.

Table 3 Serum biochemical parameters of female Swiss mice 14 days after the treatment with single intraperitoneal dose of BPP-BrachyNH₂ (5 and 50 mg/kg, i.p.)

Parameters	Control	BPP-BrachyNH ₂ (i.p.)	
		5 mg/kg	50 mg/kg
Glucose (mg/dL)	186.0 ± 18.7	132.8 ± 9.0*	136.5 ± 6.9*
Urea (mg/dL)	63.5 ± 8.5	64.6 ± 3.4	50.7 ± 3.1
Creatinine (mg/dL)	0.2 ± 0.0	0.2 ± 0.0	0.2 ± 0.0
AST (U/mL)	96.2 ± 11.0	120.0 ± 26.0	85.5 ± 16.6
ALT (U/mL)	58.0 ± 8.2	76.6 ± 6.3	48.7 ± 6.0
ALP (U/mL)	88.0 ± 13.6	87.4 ± 4.4	114.8 ± 9.5
GGT (U/mL)	2.3 ± 1.4	1.1 ± 0.5	1.6 ± 0.7
LDH (U/mL)	648.7 ± 70.9	899.2 ± 130.3	599.0 ± 40.1
Total cholesterol (mg/dL)	82.3 ± 6.4	78.8 ± 6.5	77.3 ± 3.0
Triglycerides (mg/dL)	83.3 ± 9.7	77.4 ± 11.3	72.7 ± 1.3

The values are expressed as mean ± SEM (n = 6/group)

* $p < 0.05$ when compared with control; Student t test for non-paired samples

AST aspartate aminotransferase, ALT alanine aminotransferase, ALP alkaline phosphatase, GGT gamma-glutamyl transferase, LDH lactate dehydrogenase

Table 4 Relative organ weights of female Swiss mice 14 days after the treatment with single intraperitoneal dose of BPP-BrachyNH₂ (5 and 50 mg/kg, i.p.)

Organs (g)	Control	BPP-BrachyNH ₂ (i.p.)	
		5 mg/kg	50 mg/kg
Lungs	0.656 ± 0.042	0.674 ± 0.042	0.610 ± 0.037
Heart	0.478 ± 0.026	0.555 ± 0.030	0.463 ± 0.020
Liver	4.909 ± 0.084	5.036 ± 0.429	4.824 ± 0.293
Spleen	0.395 ± 0.037	0.362 ± 0.034	0.348 ± 0.048
Kidneys	1.227 ± 0.052	1.282 ± 0.075	1.185 ± 0.049

The values are expressed as mean ± SEM (n = 6/group)

Statistical Analyses

Values are expressed as mean ± standard error of the mean (SEM). Differences between groups were determined by Student's *t* test analysis for unpaired samples. The results were considered statistically significant when $p < 0.05$.

Results and Discussion

The distributions of the peptide MW, log*P*, number of HBA and number of HBD were evaluated for the peptide and represented in Fig. 3. In addition, the data of NRB and PSA, which have been used as an additional criterion to test for favorable metabolism and pharmacokinetics outcomes, were determined (Ntie-Kang 2013). The Gibbs free energy calculated for BPP-BrachyNH₂ was 414.412 kJ/mol.

In the study of the prediction of peptide toxicity profile, several predictors including human maximum tolerated

dose, oral rat acute toxicity (LD₅₀), oral rat chronic toxicity, human ether-à-go-go related gene (hERG) inhibitors, hepatotoxicity, skin sensitization and mutagenicity were used. These parameters and descriptors are presented in Table 1. Together, the toxicity profile of the peptide revealed that BPP-BrachyNH₂ is well-tolerated by humans and rats, with the values in the recommended range. Likewise, the AMES mutagenicity prediction revealed negative for the peptide, indicating absence of BPP-BrachyNH₂-induced mutagenic activity, as well as absence of skin sensitization.

The pkCSM hepatotoxicity prediction is based on the human liver-related side effects of 531 different compounds. If the compound is related with at least one liver pathological or physiological event, the prediction returns positive result (Fourches et al. 2010; Pires et al. 2015b). Although the in silico study predicted hepatotoxicity for the BPP-BrachyNH₂, no alteration was observed in the in vivo serum biochemical parameters, such as AST, ALT, ALP, and GGT, as well as in the liver histopathological analysis (described below).

The blockage of the voltage-dependent ion channel encoded by hERG may affect the cardiac repolarization, leading to drug-induced QT interval prolongation, which is a critical side-effect of non-cardiovascular therapeutic agents (Vandenberg et al. 2012; Wang et al. 2013). The pkCSM prediction of hERG inhibition is based on two models. The hERG I model is based on the IC₅₀ values of 368 compounds, and classify the compounds as strong inhibitors (IC₅₀ < 1 - 1M), and non-blockers exhibiting moderate (1–10 1M) or weak (IC₅₀ > 10 1M) inhibition (Marchese Robinson et al. 2011). The hERG II model is based on the preliminary data of 806 compounds, also considering molecular parameters,

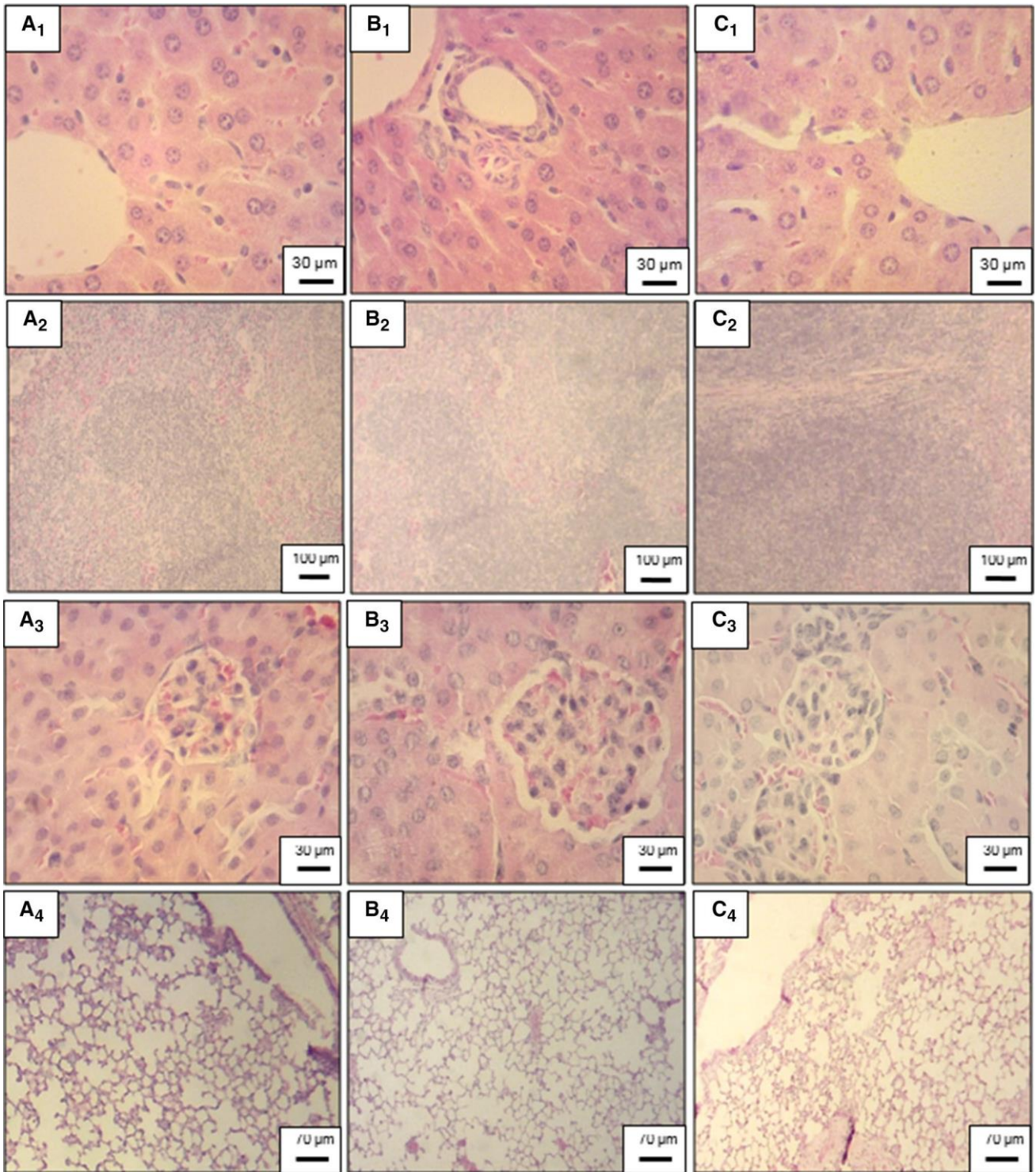


Fig. 5 Photomicrographs of histological sections obtained from the liver (a₁, b₁, c₁), spleen (a₂, b₂, c₂), kidney (a₃, b₃, c₃) and lung (a₄, b₄, c₄) of animals (n = 3) intraperitoneally treated with vehicle (a) or BPP-BrachyNH₂ at doses of 5.0 (b) and 50 (c) mg/kg. After 14 days,

the animals were euthanized, and the organs were removed and processed to histopathological analysis. The results showed that the treatment with BPP-BrachyNH₂ did not show any changes compared with vehicle. Hematoxylin and eosin staining

such as solubility and MW (Wang et al. 2012). Our *in silico* results revealed a positive result for hERG II but not for the hERG I. Although these results suggest a possible BPP-

BrachyNH₂-induced cardiotoxic effect, the differences between the applied models should be considered, as well as the different applied datasets in the same model could show

variability in the final results (Marchese Robinson et al. 2011).

In vitro cytotoxicity assays are essential in the early stages of the development of new drugs, because they are able to estimate the starting dose and the range of concentrations to be used in the in vivo non-clinical stages (OECD 2010). In this study, a decrease of cell viability induced by BPP-BrachyNH₂ in murine macrophages was not observed in MTT assay, suggesting the absence of cytotoxicity for this peptide.

Regarding the in vivo toxicological study, the BPP-BrachyNH₂ (5 and 50 mg/kg) did not cause any death after intraperitoneal administration in Swiss female mice, indicating absence of toxicity. Interestingly, in a previous study, captopril was not able to induce death up to the concentration of 2000 mg/kg, with LD₅₀ of 3255 mg/kg in female Swiss mice (Imai et al. 1981). Therefore, captopril is also considered as a safe drug. Besides, during the first 24 h after treatment and throughout 14 days, no clinical or behavioral sign of toxicity was observed (Table 2). The general activity of mice was not altered during the period of study, demonstrating a good health condition.

The evaluation of the body weight curve of the animals is an important indicator for the toxicological assessment of a substance, generally related to alterations in the consumption of water and food (OECD 2002c). The acute administration of BPP-BrachyNH₂ did not promote alterations in the body weight curve of mice throughout the treatment period (Fig. 4). Besides, a previous study report that captopril up to 4000 mg/kg is not able to alter the body weight of female Swiss mice (Imai et al. 1981).

Furthermore, no marked alterations were observed in the serum biochemical parameters when compared with the reference ranges observed for animals from different standardized animal houses (Santos et al. 2010). However, a mild alteration of blood glucose levels was observed when compared with vehicle (Table 3), suggesting further studies for a possible BPP-BrachyNH₂-induced hypoglycemic effect in experimental models of diabetes, thereby enhancing the potential application of this peptide in the treatment of cardiovascular diseases (Arcanjo et al. 2015).

The evaluation of the organ weight is a useful screening tool in the characterization of effects related to general toxicity studies (Michael et al. 2007). After treatment with BPP-BrachyNH₂, no changes were also found in organ weights (Table 4). Besides, no significant change was observed in the gross pathological examination of the organs (lungs, heart, liver, spleen and kidneys), as well as morphological changes were not observed in the histological sections (Fig. 5).

Conclusions

The in silico toxicity prediction indicated a well-tolerated toxicological profile for the BPP-BrachyNH₂. Besides, this peptide did not present any signal of in vivo acute toxicity after single dose intraperitoneal administration. This study indicates an acceptable safety profile for studies in animal experimental models focused on the investigation of the potential pharmacological, biotechnological and therapeutic applications of this peptide. In this sense, these findings reinforce further studies regarding the toxicological effects of in vivo chronic exposure to BPP-BrachyNH₂.

Funding DDRA and JRSAL grateful to CAPES and FAPEPI (Edital No. 008/2012, Acordo CAPES-FAPEPI) for the financial support for this work. ACM is grateful to FAPESP (Grant 14/02282-6). NV thanks Programa Operacional Regional do Norte (ON.2) and Faculdade de Ciências da Universidade do Porto (FCUP) for co-funding refurbishment of the Porto Peptide Synthesis Facility (POP-UP) through operation NORTE-07-0162-FEDER000111. NV thanks *Fundação para a Ciência e Tecnologia* (FCT, Portugal) and FEDER (European Union) for funding through UID/MULTI/04378/2013 and project grant IF/00092/2014. NV thanks also FCT for the IF2014 position. AP is gratefully to FCT by her grant SFRH/BD/97995/2013, financed by POPH-QREN-Tipologia 4.1-Formação Avançada, subsidized by Fundo Social Europeu and Ministério da Ciência, Tecnologia e Ensino Superior. The authors wish to acknowledge to Materials Centre of the University of Porto (CEMUP) for mass spectrometry MALDI-TOF facilities.

Compliance with Ethical Standards

Conflict of interest JRSAL on behalf of all authors declare that this article content has no conflicts of interest.

Ethical Approval The experimental procedures were performed with approval by the Ethics Committee for Animal Experimentation from the Federal University of Piauí, Brazil (Permission No. 008/2012). The animals were handled and euthanized in accordance with Resolution No. 1000 (2012) of the Brazilian Federal Council of Veterinary Medicine, in order to minimize suffering.

Research Involving Human Participants This article does not contain any studies with human participants.

References

- Arcanjo DDR, Vasconcelos AG, Comerma-Steffensen SG et al (2015) A novel vasoactive proline-rich oligopeptide from the skin secretion of the frog *Brachycephalus ephippium*. PLoS ONE 10:e0145071. doi:10.1371/journal.pone.0145071
- Camargo ACM, Ianzer D, Guerreiro JR, Serrano SMT (2012) Bradykinin-potentiating peptides: beyond captopril. Toxicon 59:516–523. doi:10.1016/j.toxicon.2011.07.013
- CDER (1996) Guidance for industry: single dose acute toxicity testing for pharmaceuticals. In: Center for Drug Evaluation and Research. <http://www.fda.gov/downloads/Drugs/GuidanceComplianceRegulatoryInformation/Guidances/UCM079270.pdf>. Accessed 7 Feb 2016

- Conceição K, Konno K, de Melo RL et al (2007) Isolation and characterization of a novel bradykinin potentiating peptide (BPP) from the skin secretion of *Phyllomedusa hypochondrialis*. *Peptides* 28:515–523. doi:10.1016/j.peptides.2006.10.002
- DiMasi JA, Hansen RW, Grabowski HG (2003) The price of innovation: new estimates of drug development costs. *J Health Econ* 22:151–185. doi:10.1016/S0167-6296(02)00126-1
- Fields GB, Noble RL (1990) Solid phase peptide synthesis utilizing 9-fluorenylmethoxycarbonyl amino acids. *Int J Pept Protein Res* 35:161–214. doi:10.1111/j.1399-3011.1990.tb00939.x
- Fourches D, Barnes JC, Day NC et al (2010) Cheminformatics analysis of assertions mined from literature that describe drug-induced liver injury in different species. *Chem Res Toxicol* 23:171–183. doi:10.1021/tx900326k
- Imai K, Hayashi Y, Hashimoto K (1981) Acute toxicological studies of captopril in rats and mice. *J Toxicol Sci* 6:179–188. doi:10.2131/jts.6.SupplementII_179
- Kaplan W, Littlejohn TG (2001) Swiss-PDB viewer (deep view). *Brief Bioinform* 2:195–197
- Klebe G (2006) Virtual ligand screening: strategies, perspectives and limitations. *Drug Discov Today* 11:580–594. doi:10.1016/j.drudis.2006.05.012
- Kubinyi H (1998) Structure-based design of enzyme inhibitors and receptor ligands. *Curr Opin Drug Discov Devel* 1:4–15
- Marchese Robinson RL, Glen RC, Mitchell JBO (2011) Development and comparison of hERG blocker classifiers: assessment on different datasets yields markedly different results. *Mol Inform* 30:443–458. doi:10.1002/minf.201000159
- Michael B, Yano B, Sellers RS et al (2007) Evaluation of organ weights for rodent and non-rodent toxicity studies: a review of regulatory guidelines and a survey of current practices. *Toxicol Pathol* 35:742–750. doi:10.1080/01926230701595292
- Morais KLP, Ianzler D, Miranda JRR et al (2013) Proline rich-oligopeptides: diverse mechanisms for antihypertensive action. *Peptides* 48:124–133. doi:10.1016/j.peptides.2013.07.016
- Ntie-Kang F (2013) An in silico evaluation of the ADMET profile of the StreptomeDB database. *SpringerPlus* 2:353. doi:10.1186/2193-1801-2-353
- OECD (2002a) Guidance document on acute oral toxicity testing. In: OECD series on testing and assessment. OECD Publishing, Paris
- OECD (2002b) Test no. 423: acute oral toxicity—acute toxic class method. OECD Publishing, Paris
- OECD (2002c) Guidance document on the recognition, assessment and use of clinical signs as human endpoints for experimental animals used in safety evaluation. In: OECD series on testing and assessment. OECD Publishing, Paris
- OECD (2010) Guidance document on using cytotoxicity tests to estimate starting doses for acute oral systemic toxicity tests. In: OECD series on testing and assessment. OECD Publishing, Paris, pp 1–54
- Pedretti A, Villa L, Vistoli G (2004) VEGA—an open platform to develop chemo-bio-informatics applications, using plug-in architecture and script programming. *J Comput Aided Mol Des* 18:167–173
- Pires DEV, Blundell TL, Ascher DB (2015a) pkCSM: predicting small-molecule pharmacokinetic and toxicity properties using graph-based signatures. *J Med Chem* 58:4066–4072. doi:10.1021/acs.jmedchem.5b00104
- Pires DEV, Blundell TL, Ascher DB (2015b) Theory—how to interpret pkCSM results. University of Cambridge. <http://bleoberis.bioc.cam.ac.uk/pkcsm/theory>
- Rodrigues KAF, Amorim LV, de Oliveira JMG et al (2013) *Eugenia uniflora* L. essential oil as a potential anti-Leishmania agent: effects on *Leishmania amazonensis* and possible mechanisms of action. *Evid Based Complement Altern Med* 2013:279726. doi:10.1155/2013/279726
- Rodrigues KAF, Amorim LV, Dias CN et al (2015) *Syzygium cumini* (L.) Skeels essential oil and its major constituent α -pinene exhibit anti-Leishmania activity through immunomodulation in vitro. *J Ethnopharmacol* 160:32–40. doi:10.1016/j.jep.2014.11.024
- Santos MRV, Souza VH, Menezes IAC et al (2010) Parâmetros bioquímicos, fisiológicos e morfológicos de ratos (*Rattus norvegicus* linhagem Wistar) produzidos pelo Biotério Central da Universidade Federal de Sergipe. *Sci Plena* 6:106101
- Vandenberg JI, Perry MD, Perrin MJ et al (2012) hERG K⁺ channels: structure, function, and clinical significance. *Physiol Rev* 92:1393–1478. doi:10.1152/physrev.00036.2011
- Verano-Braga T, Rocha-Resende C, Silva DM et al (2008) *Tityus serrulatus* Hypotensins: a new family of peptides from scorpion venom. *Biochem Biophys Res Commun* 371:515–520. doi:10.1016/j.bbrc.2008.04.104
- Wang S, Li Y, Wang J et al (2012) ADMET evaluation in drug discovery. 12. Development of binary classification models for prediction of hERG potassium channel blockage. *Mol Pharm* 9:996–1010. doi:10.1021/mp300023x
- Wang S, Li Y, Xu L et al (2013) Recent developments in computational prediction of hERG blockage. *Curr Top Med Chem* 13:1317–1326. doi:10.2174/15680266113139990036