

## MYELOID NEOPLASIA

# Prognostic impact of t(16;21)(p11;q22) and t(16;21)(q24;q22) in pediatric AML: a retrospective study by the I-BFM Study Group

Sanne Noort,<sup>1</sup> Martin Zimmermann,<sup>2</sup> Dirk Reinhardt,<sup>3</sup> Wendy Cuccuini,<sup>4</sup> Martina Pigazzi,<sup>5</sup> Jenny Smith,<sup>6</sup> Rhonda E. Ries,<sup>6</sup> Todd A. Alonzo,<sup>7</sup> Betsy Hirsch,<sup>7</sup> Daisuke Tomizawa,<sup>8</sup> Franco Locatelli,<sup>9,10</sup> Tanja A. Gruber,<sup>11</sup> Susana Raimondi,<sup>12</sup> Edwin Sonneveld,<sup>13</sup> Daniel K. Cheuk,<sup>14</sup> Michael Dworzak,<sup>15</sup> Jan Stary,<sup>16</sup> Jonas Abrahamsson,<sup>17</sup> Nira Arad-Cohen,<sup>18</sup> Malgorzata Czogala,<sup>19</sup> Barbara De Moerloose,<sup>20</sup> Henrik Hasle,<sup>21</sup> Soheil Meshinchi,<sup>6,22</sup> Marry van den Heuvel-Eibrink,<sup>1,23</sup> and C. Michel Zwaan<sup>1,23</sup>

<sup>1</sup>Pediatric Oncology/Hematology, Erasmus MC–Sophia Children’s Hospital Rotterdam, Rotterdam, The Netherlands; <sup>2</sup>Department of Pediatric Hematology/Oncology, Medical School Hannover, Hannover, Germany; <sup>3</sup>Acute Myeloid Leukemia–Berlin–Frankfurt–Münster Study Group, Pediatric Hematology and Oncology, Essen, Germany; <sup>4</sup>Department of Cytogenetics, Saint Louis Hospital, Paris, France; <sup>5</sup>Women and Children’s Health, Hematology–Oncology Laboratory, University of Padova, Padova, Italy; <sup>6</sup>Fred Hutchinson Cancer Research Center, Seattle, WA; <sup>7</sup>Children’s Oncology Group, Monrovia, CA; <sup>8</sup>Division of Leukemia and Lymphoma, Children’s Cancer Center, National Center for Child Health and Development, Tokyo, Japan; <sup>9</sup>Department of Pediatric Hematology and Oncology, Istituto di Ricovero e Cura a Carattere Scientifico, Ospedale Pediatrico Bambino Gesù, Rome, Italy; <sup>10</sup>Department of Pediatric Sciences, University of Pavia, Pavia, Italy; <sup>11</sup>Department of Oncology and <sup>12</sup>Department of Pathology, St. Jude Children’s Research Hospital, Memphis, TN; <sup>13</sup>Dutch Childhood Oncology Group, The Hague, The Netherlands; <sup>14</sup>Department of Pediatrics and Adolescent Medicine, Queen Mary Hospital, University of Hong Kong, Hong Kong; <sup>15</sup>Department of Pediatrics, Children’s Cancer Research Institute and St. Anna Children’s Hospital, Medical University of Vienna, Vienna, Austria; <sup>16</sup>Czech Pediatric Hematology/Oncology, University Hospital Motol and Charles University, Prague, Czech Republic; <sup>17</sup>Nordic Society for Pediatric Hematology and Oncology, Department of Pediatrics, Institution for Clinical Sciences, Sahlgrenska Academy, University of Gothenburg, Gothenburg, Sweden; <sup>18</sup>Pediatric Hemato–Oncology Department, Ruth Rappaport Children’s Hospital, Rambam Health Care Campus, Haifa, Israel; <sup>19</sup>Department of Pediatric Oncology and Hematology, Institute of Pediatrics, Jagiellonian University Medical College, Krakow, Poland; <sup>20</sup>Department of Pediatric Hematology–Oncology and Stem Cell Transplantation, Ghent University Hospital, Ghent, Belgium; <sup>21</sup>Pediatrics and Adolescent Medicine, Aarhus University Hospital, Aarhus, Denmark; <sup>22</sup>Department of Pediatrics, Seattle Children’s Hospital, University of Washington, Seattle, WA; and <sup>23</sup>Princess Máxima Center for Pediatric Oncology, Utrecht, The Netherlands

## KEY POINTS

- t(16;21) translocations in AML comprise t(16;21)(p11;q22) (*FUS-ERG*) as well as t(16;21)(q24;q22) (*RUNX1-CBFA2T3*).
- Survival in pediatric AML with *FUS-ERG* is poor, whereas survival in *RUNX1-CBFA2T3* is similar to other core-binding factor leukemias.

**To study the prognostic relevance of rare genetic aberrations in acute myeloid leukemia (AML), such as t(16;21), international collaboration is required. Two different types of t(16;21) translocations can be distinguished: t(16;21)(p11;q22), resulting in the *FUS-ERG* fusion gene; and t(16;21)(q24;q22), resulting in *RUNX1*-core binding factor (*CBFA2T3*). We collected data on clinical and biological characteristics of 54 pediatric AML cases with t(16;21) rearrangements from 14 international collaborative study groups participating in the international Berlin–Frankfurt–Münster (I-BFM) AML study group. The AML-BFM cohort diagnosed between 1997 and 2013 was used as a reference cohort. *RUNX1-CBFA2T3* (n = 23) had significantly lower median white blood cell count ( $12.5 \times 10^9/L$ ,  $P = .03$ ) compared with the reference cohort. *FUS-ERG* rearranged AML (n = 31) had no predominant French–American–British (FAB) type, whereas 76% of *RUNX1-CBFA2T3* had an M1/M2 FAB type (M1, M2), significantly different from the reference cohort ( $P = .004$ ). Four-year event-free survival (EFS) of patients with *FUS-ERG* was 7% (standard error [SE] = 5%), significantly lower compared with the reference cohort (51%, SE = 1%,  $P < .001$ ). Four-year EFS of *RUNX1-CBFA2T3* was 77% (SE = 8%,  $P = .06$ ), significantly higher compared with the reference cohort. Cumulative incidence of relapse was 74% (SE = 8%) in *FUS-ERG*, 0% (SE = 0%) in *RUNX1-CBFA2T3*, compared with 32% (SE = 1%) in the reference cohort ( $P < .001$ ). Multivariate analysis identified both *FUS-ERG* and *RUNX1-CBFA2T3* as independent risk factors with hazard ratios of 1.9 ( $P < .0001$ ) and 0.3 ( $P = .025$ ), respectively. These results describe 2 clinically relevant distinct subtypes of pediatric AML. Similarly to other core-binding factor AMLs, patients with *RUNX1-CBFA2T3* rearranged AML may benefit from stratification in the standard risk treatment, whereas patients with *FUS-ERG* rearranged AML should be considered high-risk. (*Blood*. 2018;132(15):1584-1592)**

## Introduction

Despite intensive chemotherapy, current outcome of pediatric acute myeloid leukemia (AML) has reached a plateau,<sup>1</sup> with 5-year event-free survival (EFS) rates ~50% to 55% and 5-year overall survival (OS) rates reaching 70%.<sup>2-5</sup> Apart from early

clinical response, cytogenetic and molecular aberrations are the most reliable prognostic factors for survival.<sup>2,3,6</sup> For future treatment stratification, identification of prognostic subgroups is important. Pediatric AML is a very heterogeneous disease; therefore, the prevalence of specific genetic subgroups can be too

low to allow individual study groups to evaluate prognostic relevance and requires international collaboration.

Over the past few years, the international Berlin-Frankfurt-Münster (I-BFM) Study Group has described clinical and genetic characteristics of several rare pediatric AML subsets with the aim to provide clinicians with data for clinical decision making such as risk-group stratification.<sup>7-11</sup> A pediatric AML group of interest is t(16;21), which, according to existing literature, is considered high risk. This is mainly based on case reports or small series in adult patients.<sup>12-16</sup> Two different t(16;21) translocations resulting in different fusion transcripts can be distinguished. These include t(16;21)(p11;q22), resulting in the *FUS-ERG* fusion,<sup>12</sup> and t(16;21)(q24;q22), resulting in the *RUNX1-core binding factor (CBFA2T3)* fusion.<sup>17</sup>

To date, 63 patients with *FUS-ERG*-rearranged AML have been described in patients from 1 to about 60 years of age,<sup>13</sup> of which 19 were children.<sup>18</sup> It has been reported that *FUS-ERG* AML presents with eosinophilia, micromegakaryocytes, and hemophagocytosis, and outcome has been described as poor.<sup>13,14,19</sup> *RUNX1-CBFA2T3* AML has been described in 24 patients, of which 5 were pediatric cases.<sup>18</sup> This aberration is associated with the French-American-British (FAB) M2 phenotype and eosinophilia.<sup>16,20</sup> In adults, *RUNX1-CBFA2T3* has been associated with treatment-related AML and is reported to have a poor outcome.<sup>20</sup> However, these data are mainly based on adult cases, and the prognostic impact of these rearrangements in pediatric AML is unknown.

To get more insight in the relevance of these somatic aberrations, we conducted a collaborative retrospective international study, gathering data from 14 study groups participating in the I-BFM Study Group. The aim of this study was to describe the biological and clinical characteristics and outcome of pediatric patients with t(16;21)-rearranged AML registered in I-BFM study group related data registries.

## Patients and methods

### Patients

To obtain the largest possible cohort of pediatric AML cases with t(16;21) aged 0 to 18 years of age, patient data were collected from 14 collaborative study groups and countries participating in the I-BFM Study Group (supplemental Table 1, available on the *Blood* Web site). Patients diagnosed between 1 January 1995 and 1 January 2016 were included in the study. Patients were identified in the data registries of the study groups by reviewing karyotypes, fluorescence in situ hybridization (FISH) and/or polymerase chain reaction (PCR) analyses. Both t(16;21) translocations can be detected by conventional karyotyping. Associazione Italiana Ematologia Oncologia Pediatrica, BFM Austria, Japanese Children's Cancer Group, and the Belgian Society for Pediatric Hematology and Oncology confirmed the translocation with either FISH or PCR as standard of care. In 1 case from the Nordic Society of Paediatric Haematology and Oncology, the *FUS-ERG* fusion was detected through RNA sequencing.

For each case, a predefined set of data was collected and checked for consistency. This set included sex, age, date of diagnosis, white blood cell (WBC) count, extramedullary disease, relation with prior treatment or cancer, FAB morphology, eosinophilia and other morphological characteristics, presence

of erythrophagocytosis, karyotype, treatment protocol, including data on allogeneic hematopoietic stem cell transplant (HSCT), response to therapy, including data on minimal residual disease detection (MRD) through flow cytometry and events, including relapse, resistant disease, occurrence of secondary malignancy, and death. Autologous HSCT was considered intensive chemotherapy.

Data of 1326 patients (excluding the t(16;21) cases) diagnosed between 1997 and 2013 were provided by the AML-BFM Study Group as a reference cohort. Patients with acute promyelocytic leukemia and Down syndrome were excluded. All patients in this cohort were classified as either standard risk (SR) patients, comprising inv(16) and t(16;21) or high-risk (HR) patients comprising other cytogenetic subtypes.

RNA sequencing data of 1035 patients with de novo AML with a median age of 9.9 (range, 0-29.6) from the Children's Oncology Group (COG) AAML1031 trial (NCT01371981) were provided by COG for gene expression analysis<sup>21,22</sup> and to identify the frequency of these aberrations. In this study, 93.9% of the patients were <18 years of age.

### Central cytogenetic review

All karyotypes were centrally reviewed by 2 independent expert cytogeneticists, W.C. and M.P., following the International System for Human Cytogenetic Nomenclature (2016). Patients with inconclusive karyotypes were screened by reverse transcription (RT)-PCR (supplemental Methods). RNA was provided by the study groups.

### Statistical analysis

Complete remission (CR) was defined as <5% blasts in the bone marrow, with regeneration of trilineage hematopoiesis and no leukemic cells in cerebrospinal fluid or elsewhere. If a patient did not obtain CR, treatment was considered a failure at day 0. MRD was measured by different study groups through flow cytometry after the first and second course of treatment. If >0.1% of the mononuclear cells were leukemic, MRD was considered positive. OS was calculated from the day of diagnosis until the date of last follow-up or death from any cause. EFS was measured from the day of diagnosis to the date of the first event or the date of last follow-up. Events considered in this analysis were resistant disease, relapse, occurrence of secondary malignancy, and death.

$\chi^2$  and Fisher's exact tests were used to compare clinical characteristics. OS and EFS analysis were estimated according to Kaplan-Meier and compared with log-rank test. Cumulative incidence of relapse (CIR) was calculated according to Kalbfleisch and Prentice and compared with the Gray test.<sup>23</sup> The Mantel-Bayar test was used to compare groups with and without allogeneic HSCT. The Cox proportional hazards model was used for multivariate analysis, considering age, WBC count at diagnosis, cytogenetic risk group (SR vs HR) as covariables, and HSCT as time-dependent variable. Analyses were performed with SPSS Statistics, version 21, and SAS 9.4. All tests were 2-tailed, and a *P* value < .05 was considered significant.

### Gene expression analysis

Fusion transcripts from AML samples of patients included in the COG cohort were detected by RNA sequencing and validated by RT-PCR. Fractional counts were normalized to trimmed mean

of *m*-values and counts per million mapped reads. The normalized counts were log<sub>2</sub> transformed and filtered for genes with at least 1 count per million in 5% of samples. For hierarchical clustering, the relative level of expression per gene in each sample was determined by mean centering the expression values using the geometric mean. Pearson correlation coefficients were used as a measure of dissimilarity with the ward.D2 linkage algorithm implemented in the R statistical programming environment (R v.3.4.0). Sample correlations were derived from the expression of the 2412 differentially expressed genes, which are the union of those identified in *FUS-ERG* or *RUNX1-CBFA2T3* vs other AML. Differential expression analysis was completed using Limma v3.32.5 R package. Genes with absolute log<sub>2</sub> fold-change >1 and Benjamini-Hochberg adjusted *P* values < .05 were retained.

## Results

### Clinical features

A total of 55 patients with t(16;21) were identified, 32 patients with *FUS-ERG*-rearranged AML and 23 patients with *RUNX1-CBFA2T3*-rearranged AML. After central review of the karyotypes, there was 1 patient who did not meet our criteria because only 1 of 20 cells analyzed displayed a t(16;21)(p11;q22). It was not possible to confirm this fusion by RT-PCR; therefore, we excluded this patient from further analysis. The total cohort thus consisted of 54 patients with t(16;21), 31 with *FUS-ERG*-rearranged AML and 23 with *RUNX1-CBFA2T3*-rearranged AML. In the COG AAML1031 cohort, 5 *FUS-ERG* and 4 *RUNX1-CBFA2T3* cases were identified, hence the frequency of *FUS-ERG* was 0.5% and 0.3% for *RUNX1-CBFA2T3*, compared with 0.3% and 0.1% in the BFM reference cohort (karyotype only), respectively. Clinical characteristics were compared with the AML-BFM Study Group reference cohort.

The patient characteristics of the t(16;21) subgroups are described in Table 1. No significant differences in sex and median age could be found when we compared patients in the *FUS-ERG* or *RUNX1-CBFA2T3* groups with the reference cohort. No patients with *FUS-ERG* rearranged AML were <2 years of age and neither *FUS-ERG* nor *RUNX1-CBFA2T3* rearrangements were found in infants <1 year of age (supplemental Figure 1). The median WBC of *FUS-ERG* ( $14.0 \times 10^9/L$ ) was not significantly different compared with the reference cohort ( $19.4 \times 10^9/L$ , *P* = .66), whereas the WBC count of *RUNX1-CBFA2T3* ( $12.5 \times 10^9/L$ ) was significantly lower (*P* = .030).

Patients with *FUS-ERG* had no predominant FAB type, whereas 76% of those with *RUNX1-CBFA2T3* had an M1/M2 FAB type, compared with 42.1% in the reference cohort (*P* = .004). There was 1 patient with *FUS-ERG* with Auer rods. No other specific morphological features were reported.

### Cytogenetics

At initial diagnosis, 9 of 31 (29.0%) patients with *FUS-ERG* had t(16;21)(p11;q22) as a sole aberration. Ten of 31 (32.3%) had a complex karyotype, defined as at least 3 chromosomal aberrations. In 3 cases, the t(16;21)(p11;q22) translocation was not detected by conventional karyotyping, but by PCR, FISH, or RNA sequencing (RNASeq). Recurrent additional cytogenetic aberrations were trisomy 8 (*n* = 6, 19.3%) and trisomy 10 (*n* = 4, 12.9%).

Complete karyotype data were available for 19 patients with *RUNX1-CBFA2T3*. In 3 (15.8%) of these patients, t(16;21)(q24;q22) was the sole abnormality. Five patients (26.3%) had a complex karyotype. Recurrent additional cytogenetic aberrations were trisomy 8 (*n* = 8, 42.1%) and deletion of the Y chromosome (*n* = 3, 15.7%). In 3 patients, cytogenetic analysis failed, but the *RUNX1-CBFA2T3* translocation was detected by FISH or PCR. In 1 patient, the t(16;21)(q24;q22) translocation was not detected by conventional karyotyping, but was detected by PCR. A detailed list of the karyotypes is provided in supplemental Table 1.

### Secondary AML

A total of 7 patients had secondary AML, 2 presenting with *FUS-ERG* rearrangements and 5 with *RUNX1-CBFA2T3*. Those with *FUS-ERG*-rearranged AML, presented with AML with myelodysplastic features and received chemotherapy before HSCT. One patient relapsed and died of disease; the second patient is still in remission after 7 years of follow-up.

Of the 5 patients diagnosed with *RUNX1-CBFA2T3*, 2 had Ewing sarcoma as primary malignancy. Four patients had been diagnosed with myelodysplastic syndrome (MDS) before AML development, 1 of whom also had previous Ewing sarcoma. The median time to development of AML after MDS diagnosis was 6.7 months (range, 4-28 months). None of the 4 patients with MDS was transplanted before AML diagnosis. In 1 patient, a 21q22 rearrangement was detected by FISH at time of MDS diagnosis. All patients received chemotherapy after being diagnosed with AML and 3 patients underwent HSCT in first CR.

### Treatment and outcome

All patients in this cohort were treated with curative intent. CR was achieved in 87.1% of the patients with *FUS-ERG* and 82.6% of those with *RUNX1-CBFA2T3*. Two patients with *RUNX1-CBFA2T3* AML suffered an early death before reaching CR.

In total, 23 patients had data available on MRD measured by flow cytometry, 12 with *FUS-ERG* and 11 with *RUNX1-CBFA2T3* (supplemental Table 2). In the *FUS-ERG* group, 5 of 12 were MRD negative after the first course of chemotherapy (MRD1), and an additional 2 were MRD negative after the second course of treatment (MRD2). No difference in the incidence of relapse could be observed between the MRD positive and negative patients, as 10 of 12 patients experienced a relapse. One of the patients that did not suffer from relapse was MRD2 positive, but had a short follow-up time of only 2 months, the other patient was MRD1 negative and received an HSCT in first CR (CR1). In the *RUNX1-CBFA2T3* group, 8/10 patients were MRD negative after the first course of chemotherapy. After the second course, all patients were MRD negative and none relapsed.

Four-year EFS, OS, and CIR for the reference cohort were 51% (standard error [SE] = 1%), 68% (SE = 1%), and 32% (SE = 1%), respectively. The SR group in the reference cohort had a 4-year EFS, OS, and CIR of 74% (SE = 3%), 88% (SE = 2%), and 19% (SE = 2%), respectively. For the HR group, EFS was 45% (SE = 2%), OS 62% (SE = 2%), and CIR 36% (SE = 2%).

Median follow-up for survivors in the t(16;21) cohort was 1.6 years for those with *FUS-ERG* and 5.0 years for *RUNX1-CBFA2T3*. Patients with *FUS-ERG* had a 4-year EFS of 7% (SE = 5%, *P* < .0001), an OS of 21% (SE = 8%, *P* < .0001), and a CIR of

**Table 1. Clinical characteristics of pediatric cases with t(16;21)**

	<i>FUS-ERG</i>	<i>RUNX1-CBFA2T3</i>	I-BFM reference cohort
N	31	23	1326
Median age (range), y	8.5 (2.0-17.5)	6.8 (1-17)	8.7 (0-20.3)
<b>Sex</b>			
% male	61	46	51.6
<b>Median WBC (range), ×10<sup>9</sup>/L</b>	14.0 (1-203)	12.5 (0.01-185)*	19.5 (0.01-190)
<20, n (%)	17 (54.8)	13 (61.9)	670 (50.5)
20-100, n (%)	10 (32.3)	7 (33.3)	414 (31.2)
>100, n (%)	5 (12.9)	1 (4.8)	242 (18.3)
<b>FAB-type, n (%)</b>			
M0	3 (9.6)	1 (4.3)	46 (3.7)
M1	8 (25.8)	3 (13.0)	178 (14.5)
M2	8 (25.8)	10 (43.5)*	339 (27.6)
M4	6 (19.3)	2 (8.7)	293 (23.9)
M5	4 (12.9)	1 (4.3)	258 (21.6)
M6	—	—	29 (2.4)
M7	1 (3.2)	1 (4.3)	85 (6.9)
NOS	1 (3.2)	5 (21.7)	—
CNS involvement, n (%)	6 (18.1)	5 (22.7)	
<b>Cytogenetics, n (%)</b>			
Sole abnormality	12 (36.4)	4 (21.1)	
Trisomy 8	6 (18.1)	7 (36.8)	
Trisomy 10	4 (12.1)	—	
Complex karyotype	10 (30.3)	5 (26.3)	
<b>Treatment, n (%)</b>			
CR obtained	28 (87.5)	22 (95.6)	
Refractory disease	3 (9.4)	—	
HSCT in CR1	13 (40.6)	8 (34.8)	
<b>Survival (SE), %</b>			
4-y EFS	13 (9)†	77 (9)†	51 (1)
4-y OS	26 (8)†	81 (8)†	68 (1)
4-y CIR	69 (8)†	0 (0)†	32 (1)

CNS, central nervous system.

\**P* < .05.†*P* < .001.

74% (SE = 8%, *P* < .0001). The median time to relapse was 10.2 months. Almost all relapses occurred early within the first year after start of treatment (18/21).

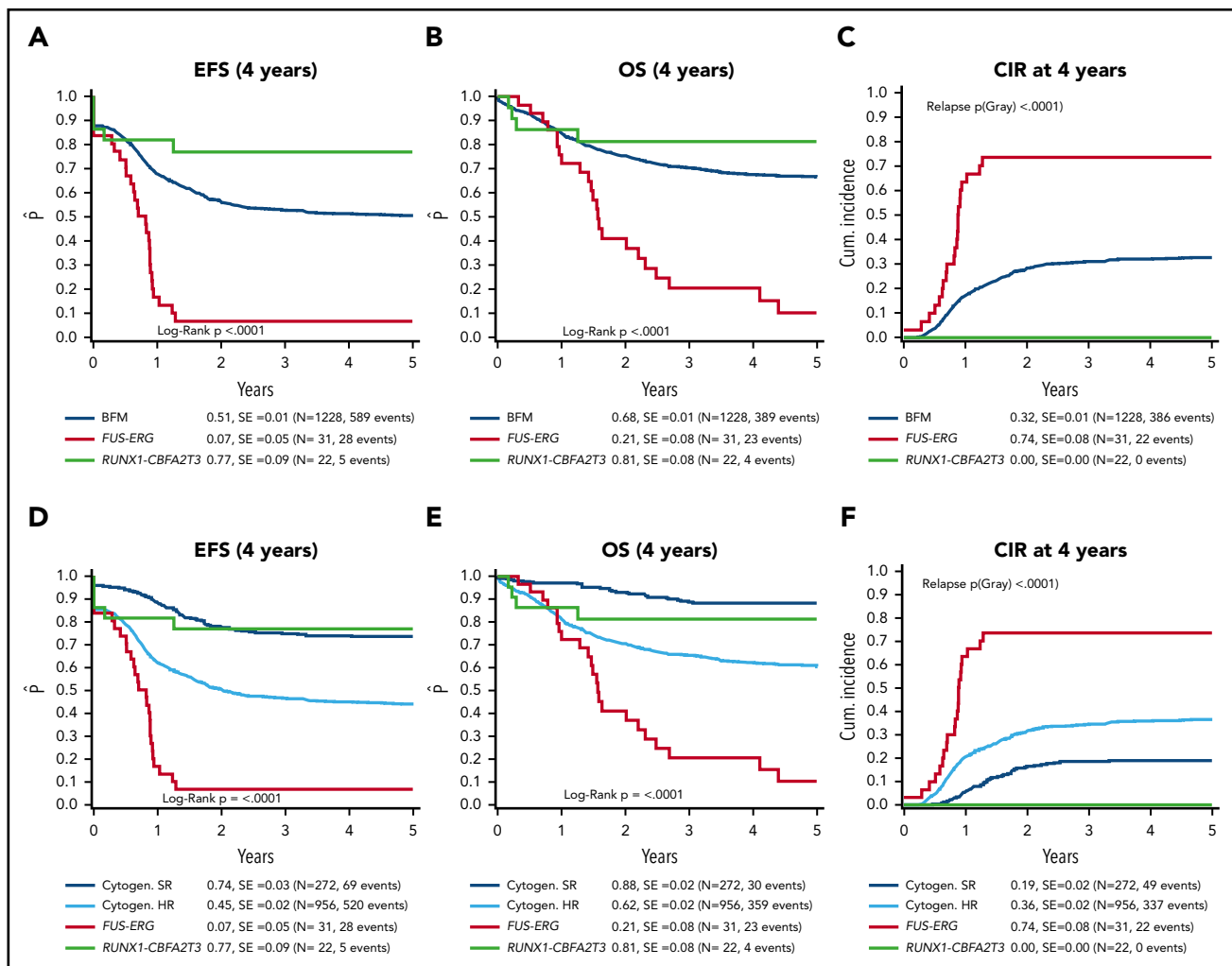
For *RUNX1-CBFA2T3*, 4-year EFS was 77% (SE = 9%, *P* = .06), OS was 81% (SE = 8%, *P* = .34), and CIR was 0%. EFS rates of the SR patients was 74% (SE = 3%). Thus, the patients with *RUNX1-CBFA2T3* had a similar outcome as BFM SR patients (Figure 1).

A total of 30 patients underwent an allogeneic HSCT: 22/31 (71.0%) patients with *FUS-ERG* and 8/23 (34.8%) with *RUNX1-CBFA2T3*. Of the 22 *FUS-ERG* patients who received an HSCT, 14 (42.2%) received the HSCT in CR1. The 4-year EFS for transplanted patients with *FUS-ERG* was 15% (SE = 15%) compared with 0% (SE = 0%) for patients receiving chemotherapy only (*P* = .50).

Multivariate analysis of EFS and OS revealed that *FUS-ERG* was an independent predictor of poor outcome for both EFS and OS (hazard ratio [HR], 2.9, *P* < .0001; and HR, 2.61, *P* < .0001, respectively), whereas *RUNX1-CBFA2T3* was a predictor of favorable outcome for EFS but not OS (HR, 0.33, *P* = .02; and HR, 0.42, *P* = .14, respectively). The HR for *RUNX1-CBFA2T3* were comparable to the SR group of the reference cohort, with HR for EFS of 0.36 (*P* < .001) and OS of 0.25 (*P* < .001). In addition, WBC >100 ×10<sup>9</sup>/L was an independent predictor of poor outcome for both EFS and OS (HR, 1.4, *P* = .0005; and HR, 1.27, *P* = .046, respectively) (Table 2). All other covariates, including HSCT, were not significantly associated with outcome.

### Gene expression profiling

Unsupervised hierarchical clustering revealed that *RUNX1-CBFA2T3* and *FUS-ERG* cluster separately (Figure 2). *FUS-ERG* also clusters separately from other cytogenetic subgroups, such



**Figure 1.** Survival of *FUS-ERG* and *CBFA2T3/RUNX1* AML compared with a pediatric AML reference cohort. (A-C) Survival curves of patients with *FUS-ERG*-rearranged AML and *CBFA2T3/RUNX1*-rearranged AML compared with the BFM reference cohort. (D-F) The reference cohort is split up according to high and standard risk.

as *KMT2A* rearrangements,  $t(16;21)(q22;q22)$  and  $inv(16)(p13;q22)$ , whereas *RUNX1-CBFA2T3* cases cluster in close proximity to  $t(16;21)(q22;q22)$  cases. Comparing gene expression of *FUS-ERG* with the remainder of the pediatric AML cohort revealed 1314 differentially expressed genes with an adjusted *P* value  $< .05$ . Among these, 428 genes were upregulated. In hematopoiesis, *ERG* is known to upregulate *GATA2* and *RUNX1*; however, there was no differential expression of these genes in *FUS-ERG*-rearranged AML.<sup>24</sup> The top 100 most differentially expressed genes of *FUS-ERG* are provided in supplemental Table 3.

Comparing *RUNX1-CBFA2T3* gene expression to the remainder of the pediatric AML cohort revealed 119 differentially expressed genes in *RUNX1-CBFA2T3*, of which 76 genes were upregulated (supplemental Table 4). Because *RUNX1-CBFA2T3* clustered in close proximity to  $t(16;21)(q22;q22)$  leading to the *RUNX1-RUNX1T1* fusion, we analyzed whether these 2 groups share a gene expression profile. We detected differentially expressed genes in *RUNX1-CBFA2T3* using the pediatric AML cohort, excluding the  $t(16;21)$  cases. Of the 2786 differentially expressed genes (2507 in  $t(16;21)$  and 279 in *RUNX1-CBFA2T3*), 187 were shared between the 2 groups. A total of 112 genes were

upregulated in both groups, 70 were downregulated in both groups, and 5 genes were upregulated in *RUNX1-CBFA2T3* and downregulated in  $t(16;21)$  (supplemental Table 5). Well-known targets of  $t(16;21)$  such as *POU4F1*, *TRH*, *PSD3*, *MEIS1*, and *LAT2* were differentially expressed in *RUNX1-CBFA2T3* AML.<sup>24,25</sup>

## Discussion

Within the framework of this international collaboration, we studied the clinical and biological features of 2 translocations involving chromosome 16 and 21. We identified 2 clinically relevant, distinct subtypes of pediatric AML patients with different  $t^{16;21}$  rearrangements: *FUS-ERG* had poor outcome, whereas *RUNX1-CBFA2T3* had favorable outcome. Our data suggest that patients with *RUNX1-CBFA2T3*-rearranged AML might benefit from treatment protocol for standard risk AML without stem cell transplantation, whereas those with *FUS-ERG*-rearranged AML seem to require high-risk therapy, including HSCT, or even experimental therapy.

Although 87.1% of the patients with *FUS-ERG*-rearranged AML reached morphological complete remission, the 4-year CIR was



**Table 2. Multivariate analysis of survival parameters of t(16;21)-rearranged AML**

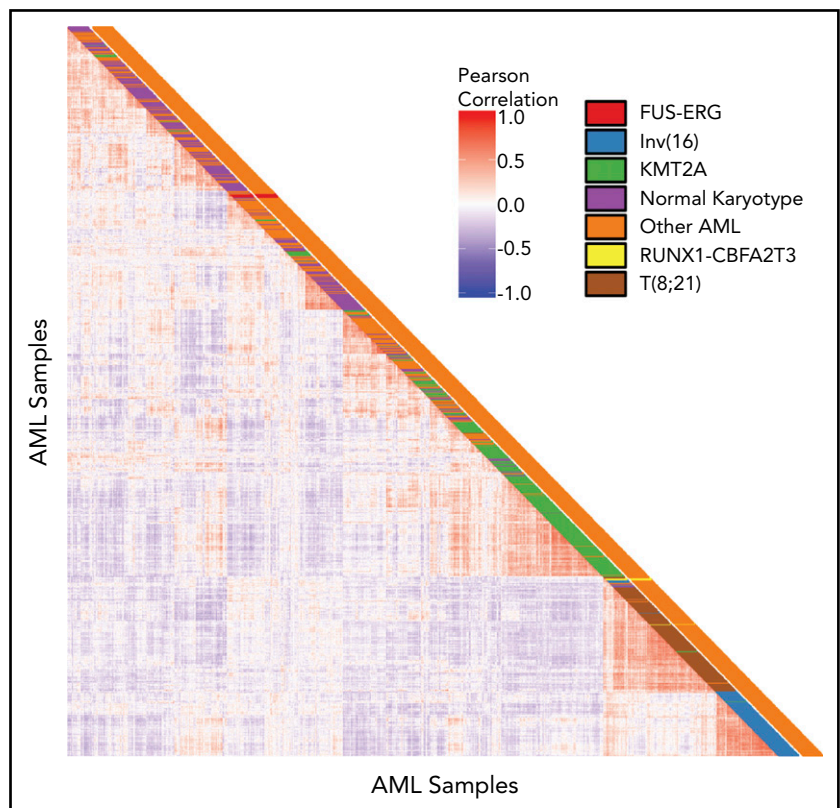
	pEFS			pOS		
	HR	95% CI	P	HR	95% CI	P
<i>FUS-ERG</i>	2.85	1.93-4.21	<.001	2.61	1.71-4.00	<.001
WBC >10 × 10 <sup>9</sup> /L	1.40	1.15-1.70	<.001	1.27	1.00-1.60	.046
Age >10 y	1.14	0.98-1.34	.087	1.38	1.14-1.67	.001
Time to HSCT	0.84	0.63-1.12	.23	0.97	0.70-1.33	.834
Cytogenetic SR group	0.36	0.28-0.47	<.001	0.25	0.17-0.36	<.001
<i>RUNX1-CBFA2T3</i>	0.32	0.12-0.87	.025	0.42	0.14-1.33	.140

CI, confidence interval; pEFS, probability of event free survival; pOS, probability of overall survival.

74% and most relapses occurred within the first year after diagnosis. Currently, early response to therapy is increasingly used for risk-group stratification of therapy in AML.<sup>3,26,27</sup> The detection of MRD through flow cytometry can provide a more accurate measure of therapy response; however, the additional benefit of MRD measurement is inconsistent between AML subtypes and studies and depends on the sensitivity of the applied technique.<sup>3,28-30</sup> In our cohort, MRD data were reported in about one-half of the t(16;21) rearranged cases. Of those, almost 40% of the patients with *FUS-ERG*-rearranged AML, who had MRD data determined by flow cytometry, were MRD negative after the first course of treatment, and about one-half of the patients (7 of 12) after the second course of treatment. However, EFS was very low in both MRD-negative and MRD-positive patients and

no significant difference in EFS between the 2 groups could be found. Despite numbers being small, this may suggest that MRD does not adequately predict relapse in this cytogenetic group. A reason for this might be that *FUS-ERG*-rearranged AML could be a leukemic stem cell-driven disease that is not successfully eradicated with current treatment protocols.

Currently, in high-risk AML subgroups with an EFS <30%, HSCT in CR1 is considered by some collaborative groups.<sup>31</sup> Because EFS of *FUS-ERG*-rearranged AML is 7%, patients with this rearrangement should be considered for HSCT in CR1 despite the benefit from HSCT seeming limited in our analysis. Therefore patients with *FUS-ERG*-rearranged AML urgently require novel forms of therapy.



**Figure 2. Unsupervised clustering analysis.** Pairwise sample correlations of 1037 samples of pediatric AML. The cells in the visualization are colored by Pearson's correlation coefficient values. Cytogenetic subgroups are depicted in the first column. Presence of *FUS-ERG* or *RUNX1-CBFA2T3* is depicted in the second column.

In contrast to *FUS-ERG*, no relapses were observed in *RUNX1-CBFA2T3*-rearranged pediatric AML. The only events that occurred were toxic events: 5 patients died from infections. Surprisingly, even patients with secondary AML did not suffer from relapse. To date, 24 *RUNX1-CBFA2T3* cases have been reported, of whom only 5 were pediatric.<sup>15,16,20,32-45</sup> In the literature, these patients were considered to be high risk. However, when we single out the pediatric cases, 2 died from an infection and 3 were in CR for at least 1 year. This seems to be consistent with our results, further supporting that *RUNX1-CBFA2T3*-rearranged AML should be stratified as SR. This suggests that outcome for *RUNX1-CBFA2T3*-rearranged AML differs between pediatric and adult patients. This may be related to the fact that this leukemia occurred often as a second malignancy in the adult cases, and perhaps was not treated with curative intent. Moreover, in general outcome in pediatric AML is better than in adults, which may reflect issues such as organ toxicity and tolerability for chemotherapy.

Of note, most of the patients in our pediatric cohort had de novo AML; however, 2 patients were diagnosed with Ewing sarcoma before AML development, and 3 additional patients had MDS before AML. The association between Ewing sarcoma and MDS/AML in pediatrics has been described previously, but not in combination with *RUNX1-CBFA2T3*.<sup>46</sup> Surprisingly, even though secondary AML is known to be a poor prognostic risk factor, there was no difference in outcome between patients with de novo or secondary AML, with no relapses in either group. According to the World Health Organization classification of myeloid neoplasms and acute leukemia, patients with a t(16;21)(q22;q22) rearrangement and <20% blasts in the bone marrow should be classified as having AML and not MDS.<sup>47,48</sup> This classification strategy could also be applied to *RUNX1-CBFA2T3* because the "MDS cases" (<20% blasts in the diagnostic marrow) were cured without SCT.

This study showed that the 2 fusions give rise to different gene expression signatures. The gene expression profile of *FUS-ERG*-rearranged cases did not reveal any similarities with other cytogenetic subgroups. The t(16;21)(p11;q22) gives rise to a fusion of the N-terminal part of *FUS*, containing the transactivation domain of *FUS* and the C-terminal of *ERG*, containing the ETS DNA-binding site of *ERG*.<sup>49</sup> *FUS-ERG* is known to bind at genomic regions that are also bound by other transcription factors associated with stem cell programs such as *RUNX1*, *FLI1*, and *GATA2*.<sup>50</sup> However, we found no differential expression of these associated genes when we compared gene expression of *FUS-ERG* rearranged AML with the other AML cases. Furthermore, Sotoca et al found that the nuclear receptor heterodimer RARA:RXR binds to *FUS-ERG*-occupied genomic regions, suggesting possible modulation of the retinoic acid response in *FUS-ERG*-rearranged AML.<sup>50</sup> This might make *FUS-ERG*-rearranged AML a potential target for treatment with all-trans retinoic acid.

On the other hand, *RUNX1-CBFA2T3* can be classified as a core binding factor AML. The CBF is a heterodimer, consisting of *RUNX1*, *RUNX2*, or *RUNX3* and *CBFB*. The CBF attaches to DNA and activates genes involved in hematopoietic development.<sup>51</sup> In leukemia, recurrent fusions of these genes have been described.<sup>52</sup> When *CBFB* or *RUNX1* is part of a fusion gene, the function of the protein changes and, instead of activating the

genes, it will repress them. In AML, 2 recurrent aberrations are currently classified as CBF AML: inv(16)(p11;q32)/t(16;16)(p11;q42) and t(8;21)(q22;q22), resulting in *CBFB-MYH11* and *RUNX1-RUNX1T1*, respectively.<sup>11</sup> There are striking similarities between *RUNX1-CBFA2T3* and t(8;21) (also known as *RUNX1-RUNX1T1*) because both are mainly found in FAB M1/M2 AML and have a favorable outcome.<sup>6,53</sup> Cytogenetically, both show recurrent loss of a sex chromosome, which is rare in other types of pediatric AML.<sup>11</sup> Both fusions also have similarities in biology. They do not only share the *RUNX1* gene, but *CBFA2T3* and *RUNX1T1* are paralogs and share 92% of their protein sequence.<sup>54</sup> Furthermore, this study showed that *RUNX1-CBFA2T3* and t(8;21) cluster in close proximity of each other and that *RUNX1-CBFA2T3* and t(8;21) share 187 differentially expressed genes, among which target genes such as *POU4F1*, *TRH*, and *MEIS1*. These results are in line with the results Lavalley et al obtained when comparing gene expression profiles of t(8;21) and inv(16).<sup>55</sup> These findings provide additional support that *RUNX1-CBFA2T3* belongs to the CBF AML subgroup, similar to t(8;21).

In this study, we relied on cytogenetic analysis to detect t(16;21). Because cytogenetic analysis fails in about 10% of cases,<sup>56</sup> there is risk of selection bias. Furthermore, as cytogenetic analysis can only detect large rearrangements; more subtle, complex rearrangements could be missed. More sensitive analysis such as FISH, RT-PCR, and RNASeq are more reliable to detect these rearrangements. *RUNX1-CBFA2T3*, for instance, can be detected through *RUNX1*-split FISH, which is usually performed as standard of care to detect *RUNX1-RUNX1T1* rearrangements. The difference in incidence between the BFM and COG AAML1031 cohort seems to confirm that RNASeq might be slightly more reliable. However, because RNASeq needs high-quality RNA of samples with a high purity of blasts, not all patients can be analyzed by this method. We were not informed on whether these cohorts were truly population-based.

In conclusion, this international collaborative study describes 2 clinically relevant distinct subtypes of pediatric AML. Although numbers are small, reflecting the rarity of the diseases, *FUS-ERG* represents an extremely poor prognostic subgroup, whereas *RUNX1-CBFA2T3* has a favorable outcome. Patients with *RUNX1-CBFA2T3*-rearranged AML might benefit from risk stratification to standard intensive therapy, as for CBF AML, whereas *FUS-ERG*-rearranged AML patients should be considered high risk and offered HSCT in CR1, even though the effect of HSCT in *FUS-ERG*-rearranged AML may be limited in this retrospective series. Although we unfortunately have no data on surface marker expression in these specific cases, more experimental therapy such as flotetuzumab or CAR T cells may offer opportunities to circumvent chemotherapy drug resistance and need to be explored in these high-risk *FUS-ERG* patients, certainly after relapse.<sup>57-60</sup>

## Authorship

Contribution: S.N., M.Z., and M.M.v.d.H.-E. designed the study; M.Z., D.R., M.P., J.S., R.E.R., T.A.A., B.H., D.T., F.L., T.A.G., S.R., E.S., D.K.C., M.D., J.S., J.A., N.A.-C., M.C., B.D.M., H.H., and S.M. contributed materials and clinical data; M.Z., M.P., W.C., J.S., R.E.R., S.N., C.M.Z., and M.M.v.d.H.-E. analyzed data; S.N., M.Z., J.S., and R.E.R. performed statistical analysis; S.N., C.M.Z., and M.M.v.d.H.-E. wrote the paper; C.M.Z. and M.M.v.d.H.-E.

supervised the study; and all coauthors performed critical review of the manuscript and gave their final approval.

Conflict-of-interest disclosure: The authors declare no competing financial interests.

A complete list of the members of the Berlin-Frankfurt-Münster Study Group appears in the online appendix.

ORCID profiles: D.T., 0000-0003-1520-7007; H.H., 0000-0003-3976-9231.

Correspondence: C. Michel Zwaan, Princess Máxima Center, Heidelberglaan 25, 3584 CS Utrecht, The Netherlands; e-mail: c.m.zwaan@prinsesmaximacentrum.nl.

## Footnotes

Submitted 3 May 2018; accepted 14 August 2018. Prepublished online as *Blood* First Edition paper, 27 August 2018; DOI 10.1182/blood-2018-05-849059.

Presented as an oral abstract at the 59th annual meeting of the American Society of Hematology, Atlanta, GA, 9 December 2017.

The online version of this article contains a data supplement.

The publication costs of this article were defrayed in part by page charge payment. Therefore, and solely to indicate this fact, this article is hereby marked "advertisement" in accordance with 18 USC section 1734.

## REFERENCES

- Rubnitz JE, Gibson B, Smith FO. Acute myeloid leukemia. *Hematol Oncol Clin North Am*. 2010;24(1):35-63.
- de Rooij JD, Zwaan CM, van den Heuvel-Eibrink M. Pediatric AML: from biology to clinical management. *J Clin Med*. 2015;4(1):127-149.
- Zwaan CM, Kolb EA, Reinhardt D, et al. Collaborative efforts driving progress in pediatric acute myeloid leukemia. *J Clin Oncol*. 2015;33(27):2949-2962.
- Rubnitz JE. Current management of childhood acute myeloid leukemia. *Paediatr Drugs*. 2017;19(1):1-10.
- Alexander TB, Wang L, Inaba H, et al. Decreased relapsed rate and treatment-related mortality contribute to improved outcomes for pediatric acute myeloid leukemia in successive clinical trials. *Cancer*. 2017;123(19):3791-3798.
- Balgobind BV, Hollink IH, Arentsen-Peters ST, et al. Integrative analysis of type-I and type-II aberrations underscores the genetic heterogeneity of pediatric acute myeloid leukemia. *Haematologica*. 2011;96(10):1478-1487.
- Balgobind BV, Raimondi SC, Harbott J, et al. Novel prognostic subgroups in childhood 11q23/MLL-rearranged acute myeloid leukemia: results of an international retrospective study. *Blood*. 2009;114(12):2489-2496.
- Coenen EA, Zwaan CM, Reinhardt D, et al. Pediatric acute myeloid leukemia with t(8;16)(p11;p13), a distinct clinical and biological entity: a collaborative study by the International-Berlin-Frankfurt-Munster AML-study group. *Blood*. 2013;122(15):2704-2713.
- Hasle H, Alonzo TA, Auvrignon A, et al. Monosomy 7 and deletion 7q in children and adolescents with acute myeloid leukemia: an international retrospective study. *Blood*. 2007;109(11):4641-4647.
- Sandahl JD, Coenen EA, Forestier E, et al. t(6;9)(p22;q34)/DEK-NUP214-rearranged pediatric myeloid leukemia: an international study of 62 patients. *Haematologica*. 2014;99(5):865-872.
- Klein K, Kaspers G, Harrison CJ, et al. Clinical impact of additional cytogenetic aberrations, cKIT and RAS mutations, and treatment elements in pediatric t(8;21)-AML: results from an international retrospective study by the International Berlin-Frankfurt-Münster Study Group. *J Clin Oncol*. 2015;33(36):4247-4258.
- Panagopoulos I, Aman P, Fioretos T, et al. Fusion of the FUS gene with ERG in acute myeloid leukemia with t(16;21)(p11;q22). *Genes Chromosomes Cancer*. 1994;11(4):256-262.
- Kong XT, Ida K, Ichikawa H, et al. Consistent detection of TLS/FUS-ERG chimeric transcripts in acute myeloid leukemia with t(16;21)(p11;q22) and identification of a novel transcript. *Blood*. 1997;90(3):1192-1199.
- Ismael O, Shimada A, Elmahdi S, et al. RUNX1 mutation associated with clonal evolution in relapsed pediatric acute myeloid leukemia with t(16;21)(p11;q22). *Int J Hematol*. 2014;99(2):169-174.
- De Braekeleer E, Douet-Guilbert N, Le Bris MJ, Morel F, Férec C, De Braekeleer M. RUNX1-MTG16 fusion gene in acute myeloblastic leukemia with t(16;21)(q24;q22): case report and review of the literature. *Cancer Genet Cytogenet*. 2008;185(1):47-50.
- Kawashima N, Shimada A, Taketani T, et al. Childhood acute myeloid leukemia with bone marrow eosinophilia caused by t(16;21)(q24;q22). *Int J Hematol*. 2012;95(5):577-580.
- Gamou T, Kitamura E, Hosoda F, et al. The partner gene of AML1 in t(16;21) myeloid malignancies is a novel member of the MTG8 (ETO) family. *Blood*. 1998;91(11):4028-4037.
- Mitelman Database of Chromosome Aberrations and Gene Fusions in Cancer. Available at <http://cgap.nci.nih.gov/Chromosomes/Mitelman>. Accessed 29 August 2018.
- Imashuku S, Hibi S, Sako M, et al. Hemophagocytosis by leukemic blasts in 7 acute myeloid leukemia cases with t(16;21)(p11;q22): common morphologic characteristics for this type of leukemia. *Cancer*. 2000;88(8):1970-1975.
- Park IJ, Park JE, Kim HJ, Jung HJ, Lee WG, Cho SR. Acute myeloid leukemia with t(16;21)(q24;q22) and eosinophilia: case report and review of the literature. *Cancer Genet Cytogenet*. 2010;196(1):105-108.
- ClinicalTrials.gov. Bortezomib and sorafenib tosylate in treating patients with newly diagnosed acute myeloid leukemia. Available at: <https://clinicaltrials.gov/ct2/show/NCT01371981>. Accessed 23 April 2018.
- Children's Oncology Group. AAML1031: A phase III randomized trial for patients with de novo AML using bortezomib and sorafenib for patients with high allelic ratio FLT3/ITD. Available at <https://www.childrensoncologygroup.org/index.php/aaml1031>. Accessed 29 August 2018.
- Prentice RL, Kalbfleisch JD. Mixed discrete and continuous Cox regression model. *Lifetime Data Anal*. 2003;9(2):195-210.
- Hsu CH, Nguyen C, Yan C, et al. Transcriptome profiling of pediatric core binding factor AML. *PLoS One*. 2015;10(9):e0138782.
- Fortier JM, Payton JE, Cahan P, Ley TJ, Walter MJ, Graubert TA. POU4F1 is associated with t(8;21) acute myeloid leukemia and contributes directly to its unique transcriptional signature. *Leukemia*. 2010;24(5):950-957.
- Buldini B, Rizzati F, Masetti R, et al. Prognostic significance of flow-cytometry evaluation of minimal residual disease in children with acute myeloid leukaemia treated according to the AIEOP-AML 2002/01 study protocol. *Br J Haematol*. 2017;177(1):116-126.
- Rubnitz JE, Inaba H, Dahl G, et al. Minimal residual disease-directed therapy for childhood acute myeloid leukaemia: results of the AML02 multicentre trial. *Lancet Oncol*. 2010;11(6):543-552.
- Ommen HB. Monitoring minimal residual disease in acute myeloid leukaemia: a review of the current evolving strategies. *Ther Adv Hematol*. 2016;7(1):3-16.
- Karol SE, Coustan-Smith E, Cao X, et al. Prognostic factors in children with acute myeloid leukaemia and excellent response to remission induction therapy. *Br J Haematol*. 2015;168(1):94-101.
- MRD-AML-BFM Study Group; Langebrake C, Creutzig U, Dworzak M, et al. Residual disease monitoring in childhood acute myeloid leukemia by multiparameter flow cytometry: the MRD-AML-BFM Study Group. *J Clin Oncol*. 2006;24(22):3686-3692.
- Rasche M, Zimmermann M, Borschel L, et al. Successes and challenges in the treatment of pediatric acute myeloid leukemia: a retrospective analysis of the AML-BFM trials from 1987 to 2012 [published online ahead of print 22 February 2018]. *Leukemia*. doi:10.1038/s41375-018-0071-7.
- Athanasiadou A, Stalika E, Sidi V, Papaioannou M, Gaitatzis M, Anagnostopoulos A. RUNX1-MTG16 fusion gene in de novo acute myeloblastic leukemia with t(16;21)(q24;q22). *Leuk Lymphoma*. 2011;52(1):145-147.
- Berger R, Le Coniat M, Romana SP, Jonveaux P. Secondary acute myeloblastic leukemia



- with t(16;21) (q24;q22). involving the AML1 gene. *Hematol Cell Ther*. 1996;38(2):183-186.
34. Boils CL, Mohamed AN. t(16;21)(q24;q22) in acute myeloid leukemia: case report and review of the literature. *Acta Haematol*. 2008; 119(2):65-68.
  35. Jeandier E, Dastugue N, Mugneret F, et al; Groupe Français de Cytogénétique Hématologique (GFCH). Abnormalities of the long arm of chromosome 21 in 107 patients with hematopoietic disorders: a collaborative retrospective study of the Groupe Français de Cytogénétique Hématologique. *Cancer Genet Cytogenet*. 2006;166(1):1-11.
  36. Kondoh K, Nakata Y, Furuta T, et al. A pediatric case of secondary leukemia associated with t(16;21)(q24;q22) exhibiting the chimeric AML1-MTG16 gene. *Leuk Lymphoma*. 2002; 43(2):415-420.
  37. La Starza R, Sambani C, Crescenzi B, Matteucci C, Martelli MF, Mecucci C. AML1/MTG16 fusion gene from a t(16;21)(q24;q22) translocation in treatment-induced leukemia after breast cancer. *Haematologica*. 2001;86(2): 212-213.
  38. Nylund SJ, Ruutu T, Saarinen U, Knuutila S. Metaphase fluorescence in situ hybridization (FISH) in the follow-up of 60 patients with haemopoietic malignancies. *Br J Haematol*. 1994;88(4):778-783.
  39. Ottone T, Hasan SK, Montefusco E, et al. Identification of a potential "hotspot" DNA region in the RUNX1 gene targeted by mitoxantrone in therapy-related acute myeloid leukemia with t(16;21) translocation. *Genes Chromosomes Cancer*. 2009;48(3): 213-221.
  40. Raimondi SC, Kalwinsky DK, Hayashi Y, Behm FG, Mirro J Jr, Williams DL. Cytogenetics of childhood acute nonlymphocytic leukemia. *Cancer Genet Cytogenet*. 1989;40(1):13-27.
  41. Salomon-Nguyen F, Busson-Le Coniat M, Lafage Pochitaloff M, Mozziconacci J, Berger R, Bernard OA. AML1-MTG16 fusion gene in therapy-related acute leukemia with t(16;21) (q24;q22): two new cases. *Leukemia*. 2000; 14(9):1704-1705.
  42. Shimada M, Ohtsuka E, Shimizu T, et al. A recurrent translocation, t(16;21)(q24;q22), associated with acute myelogenous leukemia: identification by fluorescence in situ hybridization. *Cancer Genet Cytogenet*. 1997;96(2): 102-105.
  43. Takeda K, Shinohara K, Kameda N, Ariyoshi K. A case of therapy-related acute myeloblastic leukemia with t(16;21)(q24;q22) after chemotherapy with DNA-topoisomerase II inhibitors, etoposide and mitoxantrone, and the alkylating agent, cyclophosphamide. *Int J Hematol*. 1998;67(2):179-186.
  44. Traweek ST, Slovak ML, Nademanee AP, Brynes RK, Niland JC, Forman SJ. Clonal karyotypic hematopoietic cell abnormalities occurring after autologous bone marrow transplantation for Hodgkin's disease and non-Hodgkin's lymphoma. *Blood*. 1994;84(3): 957-963.
  45. Zatkova A, Fonatsch C, Sperr WR, Valent P. A patient with de novo AML M1 and t(16;21) with karyotype evolution. *Leuk Res*. 2007; 31(9):1319-1321.
  46. Bhatia S, Krailo MD, Chen Z, et al. Therapy-related myelodysplasia and acute myeloid leukemia after Ewing sarcoma and primitive neuroectodermal tumor of bone: a report from the Children's Oncology Group. *Blood*. 2007; 109(1):46-51.
  47. Arber DA, Orazi A, Hasserjian R, et al. The 2016 revision to the World Health Organization classification of myeloid neoplasms and acute leukemia. *Blood*. 2016;127(20): 2391-2405.
  48. Swerdlow SH, Campo E, Harris NL, et al. WHO Classification of Tumours of Haematopoietic and Lymphoid Tissues. Lyon, France: IARC; 2008.
  49. Ichikawa H, Shimizu K, Katsu R, Ohki M. Dual transforming activities of the FUS (TLS)-ERG leukemia fusion protein conferred by two N-terminal domains of FUS (TLS). *Mol Cell Biol*. 1999;19(11):7639-7650.
  50. Sotoca AM, Prange KH, Reijnders B, et al. The oncofusion protein FUS-ERG targets key hematopoietic regulators and modulates the all-trans retinoic acid signaling pathway in t(16;21) acute myeloid leukemia. *Oncogene*. 2016;35(15):1965-1976.
  51. de Bruijn MF, Speck NA. Core-binding factors in hematopoiesis and immune function. *Oncogene*. 2004;23(24):4238-4248.
  52. Speck NA, Gilliland DG. Core-binding factors in haematopoiesis and leukaemia. *Nat Rev Cancer*. 2002;2(7):502-513.
  53. Rowley JD. Biological implications of consistent chromosome rearrangements in leukemia and lymphoma. *Cancer Res*. 1984;44(8): 3159-3168.
  54. Calabi F, Cilli V. CBFA2T1, a gene rearranged in human leukemia, is a member of a multi-gene family. *Genomics*. 1998;52(3):332-341.
  55. Lavallée VP, Lemieux S, Boucher G, et al. RNA-sequencing analysis of core binding factor AML identifies recurrent ZBTB7A mutations and defines RUNX1-CBFA2T3 fusion signature. *Blood*. 2016;127(20):2498-2501.
  56. Medeiros BC, Othus M, Estey EH, Fang M, Appelbaum FR. Unsuccessful diagnostic cytogenetic analysis is a poor prognostic feature in acute myeloid leukaemia. *Br J Haematol*. 2014;164(2):245-250.
  57. Wang J, Chen S, Xiao W, et al. CAR-T cells targeting CLL-1 as an approach to treat acute myeloid leukemia. *J Hematol Oncol*. 2018; 11(1):7.
  58. Petrov JC, Wada M, Pinz KG, et al. Compound CART-cells as a double-pronged approach for treating acute myeloid leukemia. *Leukemia*. 2018;32(6):1317-1326.
  59. Jetani H, Garcia-Cadenas I, Nerretter T, et al. CAR T-cells targeting FLT3 have potent activity against FLT3-ITD<sup>+</sup> AML and act synergistically with the FLT3-inhibitor crenolanib. *Leukemia*. 2018;32(5):1168-1179.
  60. Campagne O, Delmas A, Fouliard S, et al. Integrated pharmacokinetic/ pharmacodynamic model of a bispecific CD3xCD123 DART molecule in nonhuman primates: evaluation of activity and impact of immunogenicity. *Clin Cancer Res*. 2018; 24(11):2631-2641.