

## RESEARCH ARTICLE

# Natural enemies of armored scales (Hemiptera: Diaspididae) and soft scales (Hemiptera: Coccidae) in Chile: Molecular and morphological identification

Paul Amouroux<sup>1\*</sup>, Didier Crochard<sup>2</sup>, Margarita Correa<sup>2,3</sup>, Géraldine Groussier<sup>2</sup>, Philippe Kreiter<sup>2</sup>, Carola Roman<sup>4</sup>, Emilio Guerrieri<sup>5,6\*</sup>, Antonio Garonna<sup>7</sup>, Thibaut Malausa<sup>2</sup>, Tania Zaviezo<sup>1</sup>

**1** Departamento de Fruticultura y Enología, Facultad de Agronomía e Ingeniería Forestal, Pontificia Universidad Católica de Chile, Santiago, Chile, **2** Université Côte d'Azur, INRA, CNRS, ISA, Sophia Antipolis, France, **3** Centre for Molecular and Functional Ecology in Agroecosystems, Universidad de Talca, Talca, Chile, **4** Xilema-ANASAC Control Biológico, San Pedro, Quillota, Chile, **5** Istituto per la Protezione Sostenibile delle Piante, Consiglio Nazionale delle Ricerche, Portici (NA), Italy, **6** Department of Life Sciences, the Natural History Museum, London, United Kingdom, **7** Dipartimento di Agraria, Università degli Studi di Napoli "Federico II", Portici (NA), Italy

\* [pamourou@yahoo.fr](mailto:pamourou@yahoo.fr) (PA); [emilio.guerrieri@ipsp.cnr.it](mailto:emilio.guerrieri@ipsp.cnr.it) (EG)



## OPEN ACCESS

**Citation:** Amouroux P, Crochard D, Correa M, Groussier G, Kreiter P, Roman C, et al. (2019) Natural enemies of armored scales (Hemiptera: Diaspididae) and soft scales (Hemiptera: Coccidae) in Chile: Molecular and morphological identification. PLoS ONE 14(3): e0205475. <https://doi.org/10.1371/journal.pone.0205475>

**Editor:** Feng Zhang, Nanjing Agricultural University, CHINA

**Received:** September 21, 2018

**Accepted:** February 23, 2019

**Published:** March 18, 2019

**Copyright:** © 2019 Amouroux et al. This is an open access article distributed under the terms of the [Creative Commons Attribution License](https://creativecommons.org/licenses/by/4.0/), which permits unrestricted use, distribution, and reproduction in any medium, provided the original author and source are credited.

**Data Availability Statement:** The sequences were deposited in GenBank database (<https://www.ncbi.nlm.nih.gov/genbank/>) with the following accession numbers: for the predators, MH455618 to MH455618 for COI and MH456371 to MH456401 for 28S; and for Chalcidoidea MH456402 to MH456789 for COI and MH455619 to MH456370 for 28S (S1 Table). For Metaphycus, identified specimens were deposited in the Natural History Museum of London (UK) collection. Aphelinidae and Signiphoridae identified specimens

## Abstract

Scale insects (Hemiptera: Sternorrhyncha: Coccoomorpha) are key pests of agricultural crops and ornamental plants worldwide. Their populations are difficult to control, even with insecticides, due to their cryptic habits. Moreover, there is growing concern over the use of synthetic pesticides for their control, due to deleterious environmental effects and the emergence of resistant populations of target pests. In this context, biological control may be an effective and sustainable approach. Hymenoptera Chalcidoidea includes natural enemies of scale insects that have been successfully used in many biological control programs. However, the correct identification of pest scale species and their natural enemies is particularly challenging because these insects are very small and highly specialized. Integrative taxonomy, coupling DNA barcoding and morphological analysis, has been successfully used to characterize pests and natural enemy species. In this study, we performed a survey of parasitoids and predators of armored and soft scales in Chile, based on 28S and COI barcodes. Fifty-three populations of Diaspididae and 79 populations of Coccidae were sampled over the entire length of the country, from Arica (18°S) to Frutillar (41°S), between January 2015 and February 2016. The phylogenetic relationships obtained by Bayesian inference from multilocus haplotypes revealed 41 putative species of Chalcidoidea, five Coccinellidae and three Neuroptera. Species delimitation was confirmed using ABGD, GMYC and PTP model. In Chalcidoidea, 23 species were identified morphologically, resulting in new COI barcodes for 12 species and new 28S barcodes for 14 species. Two predator species (*Rhyzobius lophantae* and *Coccidophilus transandinus*) were identified morphologically, and two parasitoid species, *Chartocerus niger* and *Signiphora bifasciata*, were recorded for the first time in Chile.

were deposited in the Museo di Entomologia Filippo Silvestri collection at Portici, Italy.

**Funding:** This work was supported by: P.A. #3180344, CONICYT - Fondo Nacional de Desarrollo Científico y Tecnológico, Postdoc grant, <http://www.conicyt.cl/fondecyt/>, No; M.C. #PYT-2015-0230, Fundación para la Innovación Agraria, <http://www.fia.cl/>, No; T.M. #324475, EU FP7 Marie Curie IAPP Project “Colbics”, [http://ec.europa.eu/research/fp7/index\\_en.cfm](http://ec.europa.eu/research/fp7/index_en.cfm), No.

**Competing interests:** The authors have declared that no competing interests exist.

## Introduction

Scale insects (Hemiptera:Sternorrhyncha: Coccoomorpha) are key pests of crops and ornamental plants worldwide. Diaspididae, Pseudococcidae, and Coccidae are the three most important families of Coccoomorpha, with 421, 259 and 173 genera, respectively [1]. The control of these pests is still based essentially on repeated applications of synthetic insecticides, raising concerns about insecticide resistance in pests and possible effects on human health [2,3]. A more sustainable approach to the management of these pests involves the use of resident natural enemies or the introduction of exotic ones (biological control), either alone or together with other control methods (integrated pest management) [4]. The efficacy of biological control is dependent on the correct identification of both the target pest and its natural enemies [4]. However, the morphological identification of scale insects requires considerable expertise, as it is based largely on microscopic cuticular characters visible only on adult females in most species. Genetic analyses have recently been added to the morphological approach for the integrative characterization of insects, and seem to be the only tool able to separate closely related species reliably [5,6]. For example, DNA barcoding is a complementary tool for pest identification regardless of sex or developmental stage. This approach has recently been successfully applied to scale insects, with the molecular identification established for armored and soft scales in Chile [7] and for the mealybugs associated with grapes in Chile and elsewhere, worldwide [8–10].

The difficulties identifying scale insects also apply to the most important group of their natural enemies: Hymenoptera Chalcidoidea [11,12]. The families Aphelinidae and Encyrtidae, in particular, have been successfully used in a number of biological control programs with Diaspididae and Coccidae as target pests [13]. However, fine-scale taxonomic identification is required for the implementation of appropriate control methods. The taxonomic diversity of pests and natural enemies may make it difficult to identify the most appropriate specific parasitoid [14,15], potentially leading to a failure to control the target pest [4]. Correct identification also poses problems for predatory species from Chrysopidae [16], including *Chrysoperla* near *comanche* Banks, or Coccinellidae including *Rhyzobius lophantae* Blaisdell [17] and the *Coccidophilus* species commercially available for managing Chilean pest populations [18].

Since 1903, classical biological control programs involving the introduction of 87 biological control agents have been implemented in Chile [19]. Eighteen of the species used targeted armored scales, including six species for *Aonidiella aurantii* Maskell, two for *Lepidosaphes beckii* (Newman), and one for *Comstockaspis perniciosus* (Comstock), or soft scales, including nine species for *Saissetia oleae* (Gómez-Menor Ortega). More than 50% of the biological control agents released became successfully established and now participate in the control of the targeted pest or closely related pest species [20]. Biocontrol efficacy has also been enhanced by the activity of native parasitoid species, including *Aphytis chilensis* (Howard), *Aphytis proclia* (Walker), *Encarsia lycopersici* (De Santi), *Encarsia porteri* Mercet and *Coccidophilus citricola* Brethès, which attack armored scales, and *Coccophagus caridei* Brethès, which attacks soft scales [19,21]. Chilean armored and soft scales have recently been characterized with molecular tools, but little effort has as yet been made to characterize their natural enemies and obtain barcodes for these species.

We present here the results of a survey of natural enemies (parasitoids and predators) attacking armored and soft scales in Chile, with the aim of providing basic information useful for future biological control programs. Our two objectives were: (i) to characterize the diversity of natural enemies of scale species sampled on various fruit crops, ornamental plants, and native trees and shrubs in Chile; and (ii) to describe the association between each scale species with its natural enemies in Chile.

## Materials and methods

### Sample collection

In total, 53 populations of Diaspididae were sampled from 36 sites and 79 populations of Coccidae were sampled from 48 sites along a latitudinal gradient from Arica in northern Chile (18°S) to Frutillar in southern Chile (41°S), between January 2015 and February 2016 (Fig 1). Samples were collected from fruit crops, ornamental plants, and indigenous or endemic trees or shrubs. The minimum distance between two sampling sites was one kilometer. Each sample was checked and divided into subsamples. In each subsample, only one pest species was kept alive, the others being manually destroyed. Plant material for each subsample was placed in boxes and the emergence of natural enemies was monitored daily for 40 days. All emerging natural enemies were stored in 95% ethanol at -20°C until DNA extraction and/or morphological identification. All the emerging insects were sorted into morphospecies. Details of the samples collected (sampling locations, host plants, and dates) are available in S1 Table. The sampling was done in public sites (urban park, roadside) where no authorization was needed, or in cultivated field with the authorization of the owner. No endangered or protected species was involved.

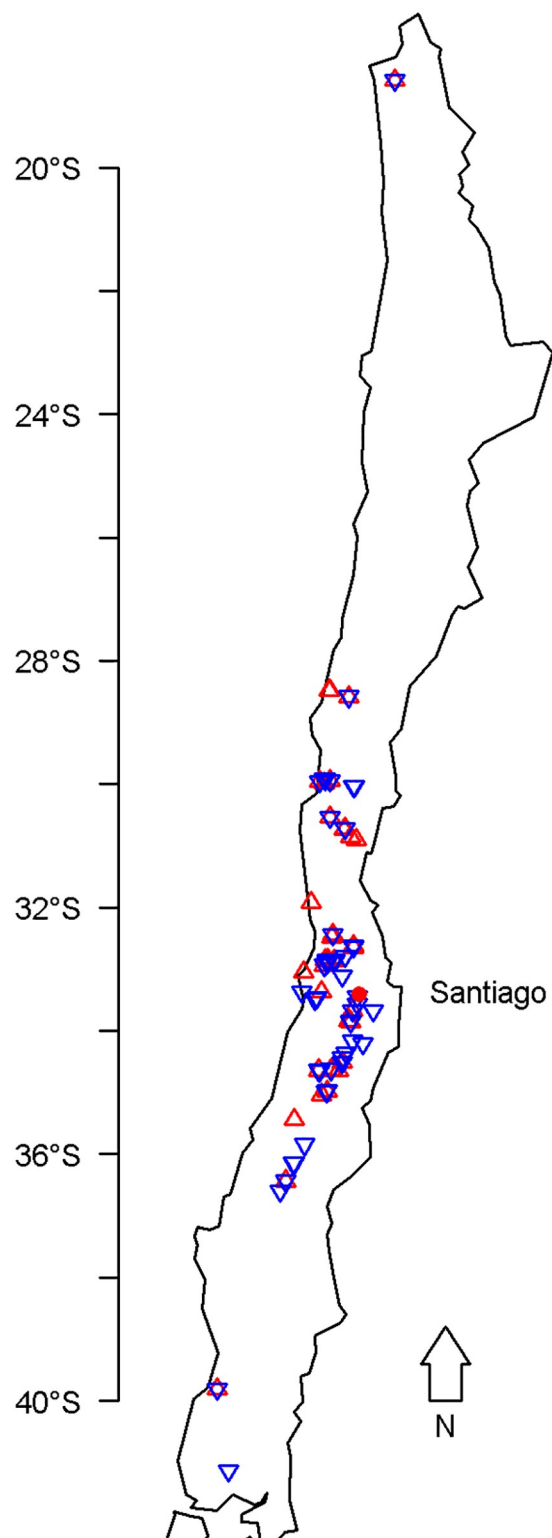
### DNA extraction and amplification

When available, two individuals per subsample and morphospecies were processed. DNA was extracted with the PrepGem Insect kit (Zygem, Hamilton, New Zealand). Parasitoids were not crushed before extraction and the time period over which the PrepGem enzyme was allowed to act was extended beyond the manufacturer's recommendations (2 h at 75°C rather than 30 minutes). The total volume of 1x PrepGem Buffer and enzyme used was 30 µL per individual [24].

For each individual, we amplified two loci chosen on the basis of their suitability for DNA barcoding, population genetics and phylogenetic studies: the HCO-LCO region of the mitochondrial gene encoding cytochrome oxidase subunit I (COI) and the D2 region of the nuclear 28S gene [25]. For COI we used the primers PCO-F1 (5' CCTTCAACTAATCATAAAAAATA TYAG 3') and Lep-R1 (5' TAAACTTCTGGATGTCCAAAAAATCA 3'); and for 28S we used the primers C-28SLong-F (5' GAGAGTTMAASAGTACGTGAAAC 3') and C-28SLong-R (5' TCGGARGGAACCAGCTACTA 3'). PCR was performed with a 23 µL reaction mixture and 2 µL of diluted DNA (1–20 ng). The reaction mixture contained 12.5 µL of 1x QIAGEN Multiplex PCR buffer and each of the primers required at a concentration of 0.2 µM. PCR was carried out as follows: initial denaturation at 95°C for 15 minutes, followed by 35 cycles of denaturation at 94°C for 30 s, annealing for 90 s at a temperature of 48°C (COI) or 58°C (28S), elongation at 72°C for 60 s, and then a final extension at 72°C for 10 minutes. The final products were separated by electrophoresis with the QIAxcel Advanced System (QIAGEN, Hilden, Germany) for quality control. The PCR products were then sent to Genewiz (UK, Essex), for bidirectional sequencing by capillary electrophoresis on an ABI 3130XL automatic sequencer (Applied Biosystems, Foster City, CA, USA). The consensus sequences were provided by Genewiz. Chromatograms were visualized with Seq-Trace 0.9.0 [26] to check nucleotide variations. The sequences were deposited in GenBank with the following accession numbers: for the predators, MH455610 to MH455618 for COI and MH456371 to MH456401 for 28S; and for Chalcidoidea MH456402 to MH456789 for COI and MH455619 to MH456370 for 28S (S1 Table).

### Molecular identification and phylogenetic analysis

We considered sequences differing by one or more nucleotides to correspond to different haplotypes. Analyses were performed on the concatenated 28S and COI haplotypes (multilocus



**Fig 1. Sampling sites for Diaspididae (red upward-pointing triangle,  $n = 36$ ) and for Coccidae (blue downward-pointing triangle,  $n = 48$ ).** Figure created with R software [22] (library 'maps' [23]).

<https://doi.org/10.1371/journal.pone.0205475.g001>

haplotype, abbr. mult-H). Regions of the 28S sequences displaying large numbers of insertions or deletions were removed for the analyses with Gblocks Server [27]. Haplotype alignment was performed with MEGA version 7 [28] and the CLUSTALW method [29]. Blast queries were performed against the NCBI GenBank database and final phylogenetic trees were generated from the haplotypes of each gene with R software [22]: libraries “ape” [30], “ade4” [31], and “phangorn” [32]. Species delineation was performed with (i) the online version of Automatic Barcode Gap Discovery (ABGD) [33], with a prior maximal distance  $P = 0.001$  and a Kimura MinSlope distance of 1.0; (ii) the online Generalized Mixed Yule Coalescent (GMYC) web server based on ultrametric tree construct with MEGA [34]; (iii) the online Bayesian Poisson Tree Processes (bPTP) web server based on the COI phylogenetic tree [34]. Pairwise distance between each haplotype was calculated by MEGA.

Bayesian inferences of phylogenetic relationships between multilocus haplotypes were obtained with BayesPhylogenies [35]. Analyses were performed with nQ+C mixture models, with  $n$  varying between one and five independent rate matrices (Qs). The best model was chosen by comparing Bayes factors. We used a GTR model, as recommended by Pagel & Meade (2004). One Markov chain was used for ten million iterations and a print frequency of 1,000 iterations. The length of the burn-in period was determined by plotting likelihood across iterations. All iterations corresponding to the burn-in period (one million iterations) were removed from the output of BayesPhylogenies before subsequent analyses. We used the sump command of MrBayes [36] to obtain a summary of BayesPhylogenies outputs and to calculate Bayes factors. Majority-rule consensus trees were then drawn with PAUP\* 4.3.99 [37] (‘contree/Majrule’ command) from the output of the BayesPhylogenies analysis (9,000 trees), using the best model selected. Trees were rooted on concatenated *Mymaromma anomalum* (Blood and Kryger) (Hymenoptera: Mymarommatidae) sequences obtained from GenBank (accession numbers: GQ374772.1 for 28S and GQ374670.1 for COI). Mymarommatoidea was recently classified as a sister group of Chalcidoidea [38].

## Morphological identification

The morphological and molecular identification of scale insects is detailed a previous study by Amouroux et al. [7].

For the morphological characterization of parasitoids, adults from each haplotype with numerous individuals were selected, and mounted on cards and slides. For card mounting, parasitoids were transferred from absolute ethanol to a 1:1 ethanol: xylene solution for 24 h, then to amyl acetate for 24 h, and mounted on cards with water-soluble glue. For slide mounting, the wings were dissected from a card-mounted specimen and directly mounted in Canada balm on the slide [39]. The remaining parts of the specimen were processed by incubation in 10% KOH for 5 min at 100°C, transferred to acetic acid for 5 minutes, then to a series of ethanol solutions of increasing concentration (from 70% to absolute) and finally to clove oil. The dissected parts of the insect (head, antennae, thorax, gaster, hypopygium, ovipositor, male genitalia) were mounted on the slide in Canada balm. The slide placed on a hot plate at 100°C for 2 h and Canada balm and cover slips were then placed over the dissected parts. For *Metaphycus*, the card- and slide-mounted specimens were compared with published descriptions [40,41] and authoritatively identified specimens deposited in the Natural History Museum of London (UK) collection. Aphelinidae and Signiphoridae were slide-mounted and compared with published descriptions [42–46] and authoritatively identified specimens deposited in the Museo di Entomologia Filippo Silvestri collection at Portici, Italy.

## Host-parasitoid associations

Sampling site was chosen as the unit for investigations of host-parasitoid associations. For each putative species, the percentage of Diaspididae (or Coccidae) at each sampling site was calculated to determine the dominant host family. We then determined the spatial distribution of each parasitoid and established its trophic network with the 'R' library "bipartite" [47], including all samples from the dominant host family. For specific host-parasitoid associations, we retained only associates observed at more than one sampling site.

## Results

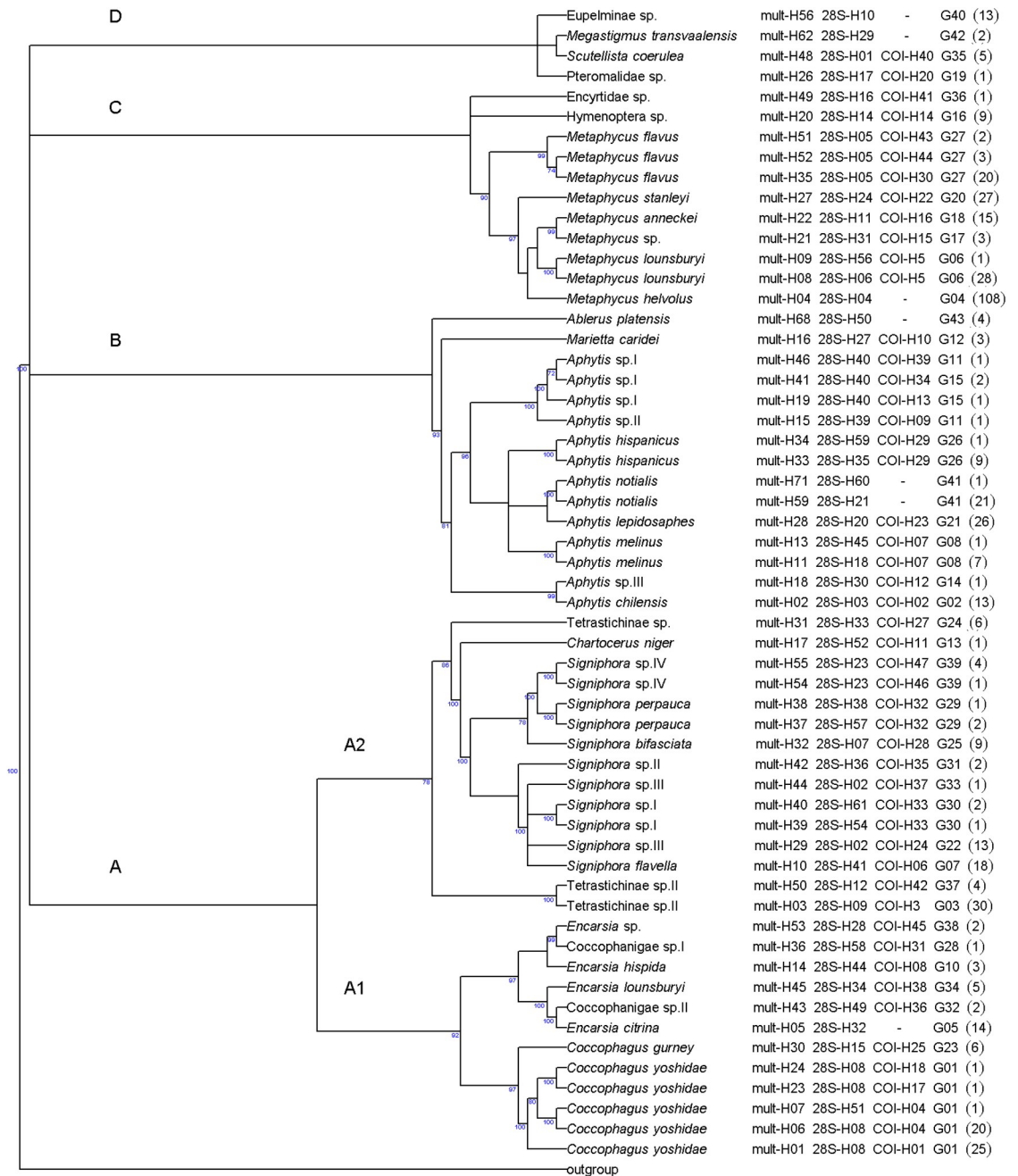
### Molecular and morphological identification

**Hymenoptera.** DNA barcodes were successfully obtained for 763 hymenopteran individuals. For 28S, 731 sequences of 760 bp to 860 bp were obtained. Before Gblocks analysis to identify conserved blocks, the 28S sequences were reduced to 596 bp (without gaps) and assigned to 61 haplotypes. For COI, 386 sequences of 652 bp were obtained, corresponding to 50 haplotypes. COI sequences were shortened for only 10 individuals, with the removal of 5 bp ( $n = 9$ ) and 31 bp ( $n = 1$ ) from the start of the sequence. Both genes were successfully sequenced in 348 individuals. Following BLAST queries, we removed the sequences of individuals not belonging to Chalcidoidea. For subsequent analyses, we used data for 506 individuals, corresponding to 50 multilocus haplotypes and seven 28S haplotypes not associated with any COI haplotype.

Within the superfamily Chalcidoidea, ABGD analyses split the multilocus haplotypes into 42 groups, whereas the 28S sequences were split into 31 groups. By combining phylogenetic cladogram (Fig 2), GMYC, bPTP (S1 Fig) and ABGD group analyses (Table 1), we identified 41 putative species. The intra variation of *Signiphora* sp. III was not maintained because both had specific 28S haplotype (Table 1) and, the bPTP analysis (Table 1) and the phylogenetic tree provided support for the monophyly (Fig 2). The presence of barcode gap also supported the species division (Table 1). For example, within the genus *Aphytis*, the intraspecific variability was lesser than 0.005 for COI and 0.008 for 28S whereas the minimum interspecific distance was 0.04 and 0.03, respectively. Morphological identification was possible for 23 of the 41 putative species. For the other 18 putative species, BLAST analyses of the GenBank database matched the DNA barcodes to a taxonomic reference. However, the identification retained was at a level above that of the species (genus or family), according to the phylogenetic cladogram. *Signiphora merceti* Malenotti was morphologically identified but was not associated with a barcoding sequence due to suspected cross-contamination. DNA barcodes were obtained for 28S and COI for 12 and 14 Chalcidoidea species without previous molecular characterization, respectively.

On the cladogram based on multilocus haplotypes (Fig 2), the family Encyrtidae (clade C) appeared to be monophyletic. The family Aphelinidae was found into two clades: A1 including the subfamily Coccophaginae, and clade B including the subfamily Aphelininae. Clade A2 contained the families Eulophidae and Signiphoridae. The families Pteromalidae, Torymidae and Eupelmidae were represented by only a few species and were grouped together in clade D.

**Predators.** DNA data were obtained for 34 individuals: 25 from Coleoptera Coccinellidae and nine from Neuroptera (Table 2). For 28S, 31 sequences of 764 bp to 986 bp were obtained. Before the Gblocks analysis, 28S sequences were reduced to 753 bp and five haplotypes were identified. For COI, eight sequences of 658 bp were obtained and seven haplotypes were



**Fig 2. Phylogenetic tree of Chalcidoidea inferred with Bayesian methods (mixture models) from multilocus haplotypes.** The majority-rule consensus tree was calculated from the Bayesian analysis. Bayesian posterior probabilities are represented beyond the nodes (values below 70% are not shown). Taxa are named according to their ABGD group, haplotype code and taxonomic names (Table 1).

<https://doi.org/10.1371/journal.pone.0205475.g002>

identified. We considered nine haplotypes in the phylogenetic analysis: five haplotypes based on the two genes, three on 28S only and two on COI only.

Predators formed two clades (Fig 3). Clade A contained three species from Neuroptera and clade B five species from Coccinellidae. *Chrysoperla* near *comanche* was identified morphologically by Bruno Michel (CIRAD—France) and *Coccidophilus transandinus* González was identified by Guillermo González (Chile).

**Table 1. List of the 41 putative Chalcidoidea species found in the survey, with their haplotypes codes: Multilocus haplotype (mult-H) resulting from concatenated 28S and COI sequences, COI haplotype (COI-H), and 28S haplotype (28S-H). ABGD groups correspond to putative species delineated by applying the ABGD method to multilocus haplotypes. N is the number of individuals for each multilocus haplotype.**

Family	Scientific name	mult-H	N	HCOI	H28S	Concatened sequences ABGD groups	COI species support by bPTP	COI pairwise intraspecific distance	COI pairwise minimum interspecific distance	28S ABGD groups	28S pairwise intraspecific distance	28S pairwise minimum interspecific distance
Aphelinidae	<i>Ablerus platensis</i>	68	4	-	50	G43	-	-	-	A34	-	0,03
	<i>Aphytis</i> sp. III	18	1	12	30	G14	0,99	0,04 <sup>a</sup>	0,10	A03	0,002	0,03
	<i>Aphytis chilensis</i>	02	13	02	03	G02	0,99					
	<i>Aphytis lepidosaphes</i>	28	26	23	20	G21	1	-	0,09	A18	-	0,04
	<i>Aphytis melinus</i>	11	7	07	18	G08	1	-	0,08	A16	0,002	0,05
		13	1	07	45							
	<i>Aphytis notialis</i>	59	21	-	21	G41	-	-	-	A19	0,003	0,05
		71	1	-	60							
	<i>Aphytis</i> sp. II	15	1	09	39	G11	1	-	0,07	A20	0,008	0,04
	<i>Aphytis</i> sp. I	46	1	39	40							
		19	1	13	40							
		41	2	34	40							
	<i>Aphytis hispanicus</i>	33	9	29	35	G26	1	-	0,08	A17	0,002	0,05
		34	1	29	59							
	<i>Coccophagus gurneyi</i>	30	6	25	15	G23	1	-	0,12	A13	-	0,03
	<i>Coccophagus yoshidae</i>	23	1	17	08	G01	0,98	0,002–0,01	0,15	A07	0,002	0,03
		24	1	18	08							
		01	25	01	08							
		07	1	04	51							
		06	20	04	08							
<i>Coccophaginae</i> sp.I	36	1	31	58	G28	1	-	0,08	A23	-	0,02	
<i>Encarsia</i> sp.	53	2	45	28	G38	1	-	0,12	A23	-	0,02	
<i>Coccophaginae</i> sp.II	43	2	36	49	G32	1	-	0,10	A33	-	0,02	
<i>Encarsia citrina</i>	05	14	-	32	G05	-	-	-	A25	-	0,02	
<i>Encarsia hispida</i>	14	3	08	44	G10	1	-	0,10	A30	-	0,03	
<i>Encarsia lounsburyi</i>	45	5	38	34	G34	1	-	0,08	A27	-	0,03	
<i>Marietta caridei</i>	16	3	10	27	G12	1	-	0,15	A22	-	0,03	
Encyrtidae	<i>Encyrtidae</i> sp. I	49	1	41	16	G36	1	-	0,13	A14	-	0,06
	<i>Encyrtidae</i> sp. II	20	9	14	14	G16	1	-	0,15	A12	-	0,11
	<i>Metaphycus stanleyi</i>	27	27	22	24	G20	1	-	0,09	A10	-	0,02
	<i>Metaphycus</i> sp.	21	3	15	31	G17	1	-	0,11	A10	0,01	0,02
	<i>Metaphycus anneckei</i>	22	15	16	11	G18	1	-	0,11	A10		
	<i>Metaphycus flavus</i>	35	20	30	05	G27	0,98	< 0,01	0,09	A05	-	0,03
		51	2	43	05							
		52	3	44	05							
	<i>Metaphycus helvolus</i>	04	108	-	04	G04	-	-	-	A04	-	0,02
	<i>Metaphycus lounsburyi</i>	09	1	05	56	G06	1	-	0,10	A06	0,002	0,02
08		28	05	06								
Eulophidae	<i>Tetrastichinae</i> sp.	31	6	27	33	G24	1	-	0,17	A26	-	0,05
	<i>Eulophidae</i> sp. I	03	30	03	09	G03	1	-	0,17	A08	0,01	0,04
	<i>Eulophidae</i> sp. II	50	4	42	12	G37	1	-	0,14	A08		

(Continued)



Table 1. (Continued)

Family	Scientific name	mult-H	N	HCOI	H28S	Concatened sequences ABGD groups	COI species support by bPTP	COI pairwise intraspecific distance	COI pairwise minimum interspecific distance	28S ABGD groups	28S pairwise intraspecific distance	28S pairwise minimum interspecific distance	
Eupelmidae	<i>Eupelminae</i> sp.	56	13	-	10	G40	-	-	-	A09	-	0,03	
Pteromalidae	<i>Pteromalidae</i>	26	1	20	17	G19	1	-	0,17	A15	-	0,03	
	<i>Scutellista coerulea</i>	48	5	40	01	G35	1	-	0,21	A01	-	0,03	
Signiphoridae	<i>Chartocerus niger</i>	17	1	11	52	G13	1	-	0,14	A35	-	0,05	
	<i>Signiphora bifasciata</i>	32	9	28	07	G25	1	-	0,09	A36	0,007	0,01	
	<i>Signiphora</i> sp.II	42	2	35	36	G31	1	-	0,09	A02	0,002	0,007	
	<i>Signiphora flavella</i>	10	18	06	41	G07	1	-	0,08–0,11				
	<i>Signiphora</i> sp.III		29	13	24	02	G22	0,99	0,08	0,09			
			44	1	37	02	G33						
	<i>Signiphora</i> sp.I		39	1	33	54	G30	1	-	0,11	A02	0,003	0,007
			40	2	33	61							
	<i>Signiphora perpauca</i>		38	1	32	38	G29	0,96	-	0,01–0,04	A37	0,002–0,005	0,01
			37	2	32	57							
<i>Signiphora</i> sp.IV		54	1	46	23	G39	0,86	0,01					
		55	4	47	23								
Torymidae	<i>Megastigmus transvaalensis</i>	62	2	-	29	G42	-	-	-	A24	-	0,04	

<sup>a</sup> Distance between *Aphytis* sp. IV and *A. chilensis*

<https://doi.org/10.1371/journal.pone.0205475.t001>

### Host-parasitoid associations

Data for 738 DNA-barcoded individuals were used to develop a description of the geographic distribution of parasitoid species and hosts (Table 3) and produced the corresponding food web (Fig 4).

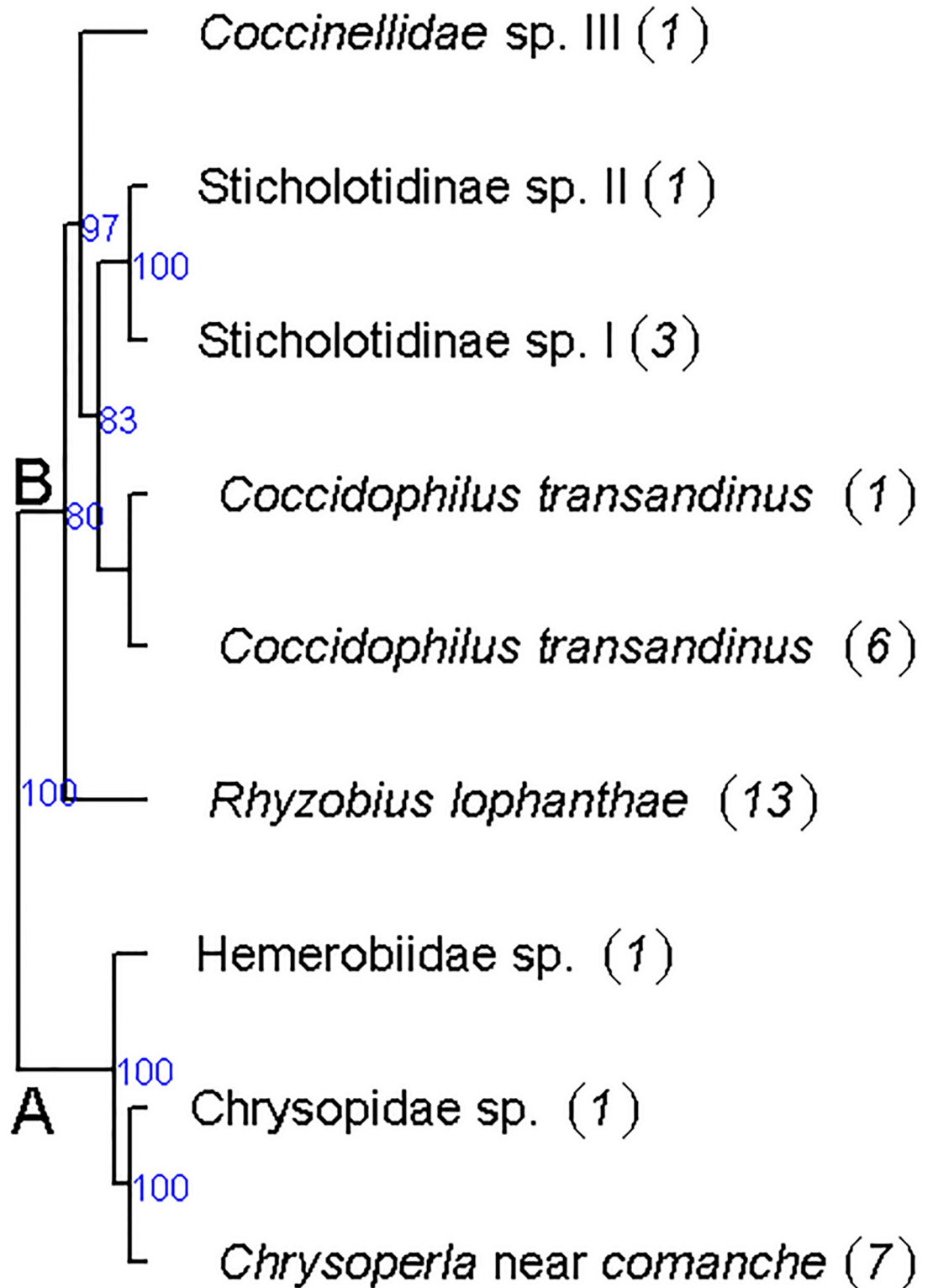
Three species were discarded from this description: *Coccophagus gurneyi* Compere and *Encarsia hispida* De Santis, which are parasitoids of Pseudococcidae and Aleyrodidae, respectively; and *Megastigmus transvaalensis* (Hussey), which feeds on *Schinus* spp. seeds [13]. Detailed information about all individuals is provided in S1 Table.

Armored scale insects from the surveyed sites were parasitized by 21 species from the families Aphelinidae, Azotidae and Signiphoridae. For the 10 species identified on the basis of

Table 2. Predator species (Neuroptera or Coccinellidae) distribution (northernmost and southernmost latitudes), and number of individuals (N).

Predator species	Latitude	COI-P	28S-P	N
<i>Chrysoperla</i> near <i>comanche</i>	32°49–34°38	COI-P1	28S-P1	7
Hemerobiidae sp.	36°08	-	28S-P2	1
Chrysopidae sp.	32°51	COI-P2	-	1
<i>Rhyzobius lophanthae</i>	28°28–34°38	-	28S-P3	13
<i>Coccidophilus transandinus</i>	32°26–33°51	COI-P3	28S-P4	6
		COI-P4	28S-P4	1
Sticholotidinae sp. I	33°51–34°38	COI-P5	-	3
Sticholotidinae sp. II	35°07	COI-P6	-	1
Coccinellidae sp.	32°51	COI-P7	-	1

<https://doi.org/10.1371/journal.pone.0205475.t002>



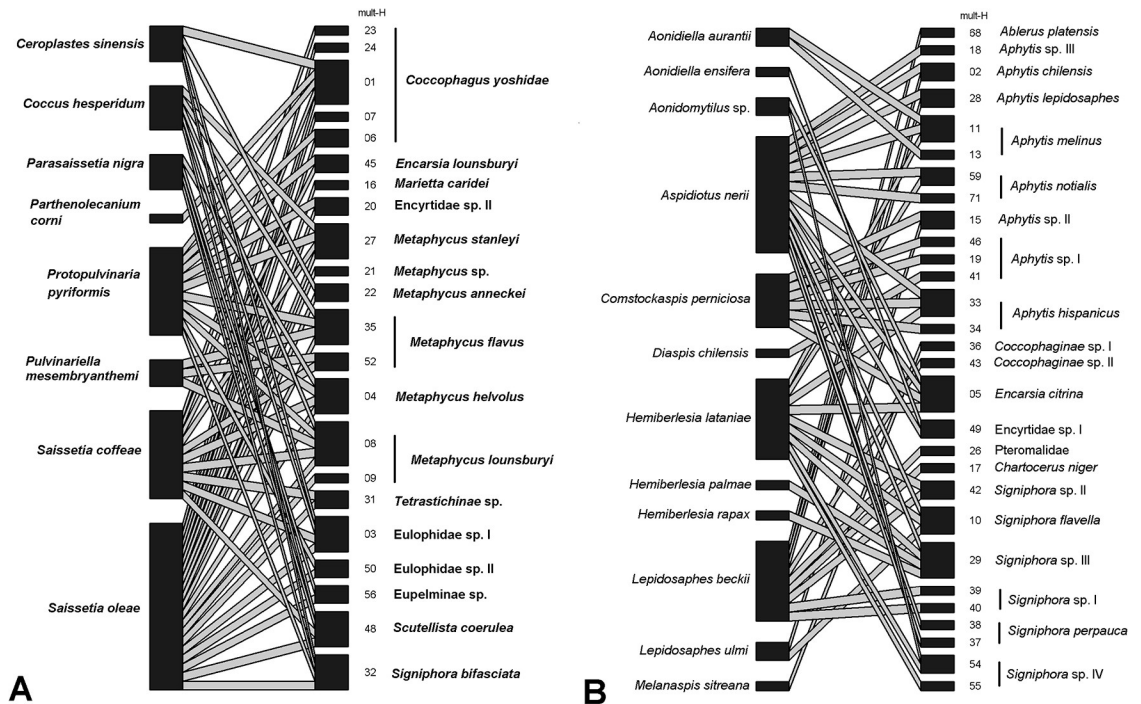
**Fig 3. Phylogenetic tree of Neuroptera and Coccinellidae predators inferred by Bayesian methods (mixture models) from multilocus haplotypes.** The majority-rule consensus tree was calculated from the Bayesian analysis. Bayesian posterior probabilities are shown beyond the nodes (values below 70% are not shown). Taxa are named according to their ABGD group, haplotype code and taxonomic names (Table 2).

<https://doi.org/10.1371/journal.pone.0205475.g003>

**Table 3. Chalcidoidea species, name of host family (number of samples from the majority host family / total number of samples), distribution (northernmost and southernmost latitudes), and list of host species (number of sites with the association).**

Parasitoid species	Major host family		Latitude	Host species (Number of site)
<i>Aphytis chilensis</i>	Diaspididae	11/13	29°59–36°26	<i>Aspidiotus nerii</i> (8)
<i>Aphytis hispanicus</i>	Diaspididae	10/12	28°28–34°30	<i>Aspidiotus nerii</i> (2) <i>Diaspidiotus perniciosus</i> (3) <i>Hemiberlesia lataniae</i> (2)
<i>Aphytis lepidosaphes</i>	Diaspididae	10/17	28°34–34°58	<i>Lepidosaphes beckii</i> (8)
<i>Aphytis melinus</i>	Diaspididae	9/11	30°32–34°38	<i>Aspidiotus nerii</i> (4)
<i>Aphytis notialis</i>	Diaspididae	10/13	30°32–36°26	<i>Aspidiotus nerii</i> (7)
<i>Aphytis</i> sp. I	Diaspididae	6/6	30°32–33°34	<i>Diaspidiotus perniciosus</i> (2)
<i>Coccophagus yoshidae</i>	Coccidae	52/53	29°55–36°25	<i>Ceroplastes sinensis</i> (2) <i>Protopulvinaria pyriformis</i> (4) <i>Saissetia coffeae</i> (2) <i>Saissetia oleae</i> (37)
<i>Encarsia citrina</i>	Diaspididae	8/9	32°26–41°08	<i>Aonidomytilus</i> sp. (2) <i>Aspidiotus nerii</i> (2)
<i>Encarsia lounsburyi</i>	Coccidae	3/4	28°28–29°55	<i>Protopulvinaria pyriformis</i> (2)
<i>Eupelminae</i> sp.	Coccidae	11/11	29°55–36°26	<i>Saissetia oleae</i> (10)
<i>Marietta caridei</i>	Coccidae	7/7	32°51–33°40	<i>Saissetia oleae</i> (7)
<i>Metaphycus anneckeii</i>	Coccidae	10/10	32°28–33°51	<i>Saissetia oleae</i> (8)
<i>Metaphycus flavus</i>	Coccidae	16/21	18°34–39°48	<i>Protopulvinaria pyriformis</i> (2) <i>Saissetia oleae</i> (10)
<i>Metaphycus helvolus</i>	Coccidae	36/40	29°56–36°25	<i>Protopulvinaria pyriformis</i> (4) <i>Saissetia coffeae</i> (2) <i>Saissetia oleae</i> (29)
<i>Metaphycus lounsburyi</i>	Coccidae	35/37	29°56–39°48	<i>Protopulvinaria pyriformis</i> (2) <i>Saissetia oleae</i> (28)
<i>Metaphycus stanleyi</i>	Coccidae	14/17	18°34–33°34	<i>Coccus hesperidum</i> (2) <i>Protopulvinaria pyriformis</i> (3) <i>Saissetia coffeae</i> (4) <i>Saissetia oleae</i> (9)
<i>Scutellista caerulea</i>	Coccidae	20/22	18°34–36°08	<i>Saissetia coffeae</i> (3) <i>Saissetia oleae</i> (14)
<i>Signiphora bifasciata</i>	Coccidae	12/12	30°32–36°08	<i>Ceroplastes sinensis</i> (2) <i>Protopulvinaria pyriformis</i> (2) <i>Saissetia oleae</i> (6)
<i>Signiphora flavella</i>	Diaspididae	8/9	30°32–35°26	<i>Aspidiotus nerii</i> (2) <i>Hemiberlesia lataniae</i> (3) <i>Lepidosaphes ulmi</i> (2)
<i>Signiphora perpauca</i>	Diaspididae	3/3	28°28–36°26	<i>Aspidiotus nerii</i> (3)
<i>Signiphora</i> sp. II	Diaspididae	4/4	28°34–32°50	<i>Lepidosaphes beckii</i> (2)
<i>Signiphora</i> sp. III	Diaspididae	12/17	18°34–36°26	<i>Aspidiotus nerii</i> (2) <i>Hemiberlesia lataniae</i> (3) Unidentified Diaspididae (3)
<i>Signiphora</i> sp. IV	Diaspididae	3/4	39°48–32°51	<i>Hemiberlesia lataniae</i> (2)
<i>Tetrastichinae</i> sp.	Coccidae	5/5	36°26–28°34	<i>Saissetia oleae</i> (2)

<https://doi.org/10.1371/journal.pone.0205475.t003>



**Fig 4. Qualitative food webs reconstructed by crossing the morphological identification of Coccidae (A) and Diaspididae (B) with the parasitoids multilocus.**

<https://doi.org/10.1371/journal.pone.0205475.g004>

morphology and DNA analyses, several previously unreported host associations were found, such as that between the apple mussel scale, *Lepidosaphes ulmi* (L.) and *Signiphora flavella* Girault. On the Fig 4B, each haplotype of parasitoid was associated with one or two morphological species of armored scale except mult-H11 (*Aphytis melinus*), mult-H33 (*A. hispanicus*), mult-H05 (*Encarsia citrina*) and mult-H29 (*Signiphora* sp. III).

Soft scale insects from the surveyed sites were parasitized by 16 putative species. For the nine Chalcidoidea species identified on the basis of morphology and DNA analyses, several previously unreported host associations were observed: *Coccophagus yoshidae* Peck on *Ceroplastes sinensis* Del Guercio, *Protopulvinaria pyriformis* Cockerell and *Saissetia coffeae* (Walker); *Signiphora bifasciata* on *C. sinensis*, *P. pyriformis* and *S. oleae*. On the Fig 4A, 13 of 22 haplotypes were associated with one or two soft scale species.

## Discussion

### Molecular and morphological identification, and phylogenetic analyses

In this survey, we obtained COI and 28S barcode sequences for 41 putative species from Chalcidoidea, five from Coccinellidae and three from Neuroptera from Chile. For 23 species of parasitoids, it was possible to assign a taxonomic name on the basis of morphological examination. One species, *Signiphora merceti*, was identified only by morphological examination. Two Signiphoridae species, *Chartocerus niger* (Ashmead) and *Signiphora bifasciata* Ashmead, have never before been reported in Chile. Thirteen (for COI) and 15 (for 28S) of the barcodes obtained are the first available for Chalcidoidea species and for predators.

Analyses based on multilocus haplotypes provided results that were consistent overall, with ABGD groups forming clusters on the phylogenetic trees. The only exception was *Aphytis* sp. I and sp. II, for which the phylogenetic tree and ABGD analysis were different. However,

according to the GYMC analysis, we differentiated the two putative species. Moreover, the COI intraspecific distance (lower than 0.04) was congruent with the intraspecific distance observed within the Chalcidoidea species [48].

The family Aphelinidae was divided into two clades (A and B on Fig 2), which also included Azotidae, Eulophidae and Signiphoridae. This division is congruent with the ‘eulophid lineage’ of Heraty et al. [38], which groups these families of “soft-bodied” Chalcidoidea together. Moreover, these authors also reported that the family Aphelinidae was para- or polyphyletic. Before the work of Heraty et al. [38], Azotidae (including *Ablerus*) was considered to be a subfamily of Aphelinidae (= Azotinae) [49].

For predators, the two main clades identified were consistent with insect orders, with a single branch containing three species of Neuroptera, including one species of Hemerobiidae and two species of Chrysopidae, and another branch containing five species of Coccinellidae (Coleoptera), including one species of Coccidulinae (*R. lophanthae*) and three species of Sticholotidinae including *C. transandinus*.

### Host-parasitoids associations

Host-parasitoids association also bring relevant information about the presence of cryptic species [48,50]. For armored scale parasitoids, 17 species were associated with one or two hosts (Fig 4A) that support the putative species observed being consistent with the host-parasitoids specialization. Only, *E. citrina* and *Signiphora* sp. III were associated with four host species, and *A. hispanicus* and *S. flavella* with three different hosts. However, the presence of cryptic species is discarded due to only one haplotype was observed. For soft scale parasitoids, about half of the haplotypes observed were associated with three or more host species. However, at the species level, none particular distribution was noted within haplotype. For example, *Coccophagus yoshidae* showed the largest diversity of haplotypes (n = 5): three haplotypes were only linked with one *Saissetia* sp., one with *S. oleae* and *P. pyriformis*, and one with five soft scale species including the previous cited species. However, this result not allowed concluding of the host use of parasitoid due to the heteronomy observed within *Coccophagus* sp. [50]. Moreover, this reproductive system could influence the effectiveness of the biological control. Host species producing mainly male are not useful to maintain and increase the parasitoid population. More accurate host-parasitoids association could be achieved including the cryptic diversity of the host [15], field (spatial and temporal distribution) and laboratory (sex identification, mating test) experiments [48,50]. Here, the heterogeneous sampling effort not allowed quantitative comparison and analyses.

### Species of natural enemies attacking scale insects in Chile

Aphelinidae displayed the greatest diversity, with nine species in the subfamily Aphelininae, including six identified to species level: *Aphytis lepidosaphes* (Mercet), *Aphytis melinus* De Bach, *Aphytis notialis* De Santis, *Aphytis hispanicus* (Mercet), *A. chilensis* and *Marietta caridei* Brèthes. Nine species from Coccophaginae were collected, six of which were identified to species level: *Ablerus platensis* (Brèthes), *Coccophagus gurneyi*, *C. yoshidae*, *Encarsia citrina* (Crawford), *E. lounsburyi* (Berlese & Paoli), *E. hispida*.

In total, 11 species of *Aphytis* are known in Chile [13], most of which were introduced for classical biological control [19]. *A. melinus* (introduced in 1966) and *A. lepidosaphes* (introduced in 1951) were the only introduced species recovered in this survey. We also collected the native species *A. chilensis*, which is used in biological control and has been introduced into other countries from Chile [20]. The other *Aphytis* taxon collected in this study, *Aphytis* sp. I, may represent a new species. Within the subfamily Coccophaginae, *Encarsia lounsburyi*

was observed on various Coccidae species. This species was widely distributed throughout Chile and had a high degree of genetic diversity. Only *E. citrina* was collected on Diaspididae. *Coccophagus lycimnia* (Förster) and *C. caridei*, two members of Coccophaginae widely considered to be natural enemies of Coccidae species in Chile [51], were not recovered in our survey.

The family Signiphoridae was represented by at least eight species, including *Signiphora perpauca* Girault, *S. flavella*, *S. merceti*, *S. bifasciata* and *Chartocerus niger*. The last two of these species have never before been recorded in Chile. *Signiphora aspidioti* Ashmead and unidentified Signiphoridae species have been reported as natural enemies of *Hemiberlesia* spp. in Chile [51]. However, none of these species has yet been used in augmentative biological control programs in Chile [19,20]. Given their small size, accidental introduction and the existence of native species cannot be ruled out. Wooley and Dal Molin [46] highlighted the importance of *Signiphora* as primary parasitoids of armored scales, including *S. perpauca* against *Chrysomphalus aonidum* (L.) in Brazil. In this study, *S. perpauca* was associated only with *Aspidiotus nerii* Bouché. The other six species of *Signiphora* were collected on Diaspididae (*Hemiberlesia lataniae* (Signoret), *A. nerii*, and *Lepidosaphes* spp.), whereas only *S. bifasciata* was found on Coccidae (Table 3). *Signiphora bifasciata* has been reported to be a hyperparasitoid of Coccidae in Mexico [45]. Signiphoridae may be important natural enemies of scale insects in Chile and probably deserve more attention.

In our survey, Encyrtidae was represented by eight putative species, including six *Metaphycus* species: *Metaphycus aneckei* Guerrieri & Noyes, *Metaphycus flavus* (Howard), *Metaphycus helvolus*, *Metaphycus stanleyi* (Compere), *M. lounsburyi*, and one unidentified species. *Metaphycus flavus* is a cosmopolitan species present in Chile. The other four species were all introduced for classical biological control of *S. oleae* between 1931 and 1997. They now all contribute to the natural control of other Coccidae species, including *Coccus hesperidum* L., *S. coffeae*, and *P. pyriformis*. Ripa & Larral [51] identified the same five species of parasitoids and an undescribed species attacking first to third instars of *S. oleae*. However, the number of individuals collected ( $n = 3$ ) was too small for further characterization of this taxon.

*Scutellista caerulea* (Fonscolombe) is one of the two species from Pteromalidae collected. It was introduced into Chile in 1931 and is now present over a wide range of latitudes. It is an efficient biocontrol agent against Coccidae due to its behavior as a predator of eggs or as an ectoparasitoid of adults [51]. Its activity complements that of other *Metaphycus* spp., which attack young larval stages of the same host.

The predators identified in this study included three putative species of Neuroptera, two from Chrysopidae and from Hemerobiidae. Only *Chrysoperla* near *comanche* was identified morphologically. Molecular identification within Chrysopidae was inconclusive, probably due to the occurrence of cryptic species, as observed in the Northern Hemisphere and Africa [52]. The larvae of these species are voracious predators known to be generalists but including scale insects among their prey [51].

Five Coccinellidae species were collected. *Coccidophilus transandinus* (Sticholotidinae) was identified morphologically, whereas *Rhyzobius lophantae* (Coccinellidae: Coccidulinae) was clearly identified on the basis of similarities between its DNA sequences and sequences present in the GenBank database. This common biocontrol agent was introduced into Chile in 1931 for the control of *Aonidiella aurantii* [19], and is now available commercially. The other three species belonged to the subfamily Sticholotidinae, which includes 17 species reported to be present in Chile, all belonging to tribe Microweiseini [53]. Their small size makes them difficult to collect, but they are considered to be efficient natural enemies of armored scale insects and are reared for this purpose [53].

## Conclusion

We report COI and 28S barcode sequences for parasitoids and predators of armored and soft scales from Chile, which will facilitate the identification of these species in the future. Two Signiphoridae species new to Chile were recorded, and potential new species were detected. Host-parasitoid associations merit greater attention, to improve our understanding of the potential role of some species in the biological control of insect pests. Further research could focus on little studied groups, such as Signiphoridae, and on natural enemies of native scale insects. A deeper knowledge of the biology of the most promising biological control agents is required, together with additional information about possible interactions between species attacking the same host.

## Supporting information

**S1 Table. List, in alphabetical order, of the 798 individuals sequenced, their molecular code for the voucher in the INRA collection, their sample date and location (administrative region, municipality, longitude and latitude, elevation), their host plant (scientific name), their family and species host (scientific name), and their number Genbank accession number for COI and 28S.**

(PDF)

**S1 Fig. Phylogenetic relationships and species delimitation inferred by PTP (A) and GMYC (B) models.**

(PNG)

## Acknowledgments

We would like to thank all the growers who allowed us access to their orchards for sample collection. We thank Paula Molina and Angela Romo for technical assistance in the laboratory. We also thank all those who helped us to collect samples throughout Chile: Hugo Herrera, Francisco Bugueño, Sebastian Catalan and Isaac Vera from Xilema-ANASAC (Quillota); Claudio Salas from Instituto de Investigaciones Agropecuarias (INIA Intihuasi—La Serena); Marta Godoy from Cabilfrut (Ovalle); Leonardo Fuentes from Pontificia Universidad Católica de Valparaíso (Quillota); Alda Romero from Pontificia Universidad Católica de Chile (Santiago); Jean-Claude Malausa from Institut National de la Recherche Agronomique (Sophia-Antipolis, France). This project was supported by the EU FP7 Marie Curie IAPP Project “Colbics” #324475, the “Fundación para la Innovación Agraria” (FIA) #PYT-2015-0230 and CONICYT FONDECYT Postdoctorado No. 3180344.

## Author Contributions

**Conceptualization:** Paul Amouroux, Philippe Kreiter, Thibaut Malausa, Tania Zaviezo.

**Data curation:** Paul Amouroux.

**Formal analysis:** Paul Amouroux.

**Funding acquisition:** Paul Amouroux, Margarita Correa, Thibaut Malausa.

**Investigation:** Paul Amouroux, Didier Crochard, Géraldine Groussier, Emilio Guerrieri, Antonio Garonna.

**Methodology:** Margarita Correa, Philippe Kreiter, Thibaut Malausa.

**Resources:** Carola Roman.

**Supervision:** Thibaut Malausa, Tania Zaviezo.

**Visualization:** Paul Amouroux.

**Writing – original draft:** Paul Amouroux.

**Writing – review & editing:** Paul Amouroux, Margarita Correa, Philippe Kreiter, Emilio Guerrieri, Antonio Garonna, Thibaut Malausa, Tania Zaviezo.

## References

1. García Morales M, Denno BD, Miller DR, Miller GL, Ben-Dov Y, Hardy NB. ScaleNet: a literature-based model of scale insect biology and systematics. Vol. 2016, Database: the journal of biological databases and curation. 2016.
2. Buzzetti KA, Chorbadjian RA, Fuentes-Contreras E, Gutiérrez M, Ríos JC, Nauen R. Monitoring and mechanisms of organophosphate resistance in San Jose scale, *Diaspidiotus perniciosus* (Hemiptera: Diaspididae). *J Appl Entomol* [Internet]. 2015 Nov 21; 140(7):507–16. Available from: <https://doi.org/10.1111/jen.12283>
3. Bourguet D, Guillemaud T. The Hidden and External Costs of Pesticide Use. In: Lichtfouse E, editor. *Sustainable Agriculture Reviews: Volume 19* [Internet]. Cham: Springer International Publishing; 2016. p. 35–120. [https://doi.org/10.1007/978-3-319-26777-7\\_2](https://doi.org/10.1007/978-3-319-26777-7_2)
4. Ouvrard D, Kondo T, Gullan PJ. Scale Insects: Major Pests and Management. In: *Encyclopedia of Pest Management*. Taylor and. New York; 2013. p. 1–4.
5. Gwiazdowski RA, Veá IM, Andersen JC, Normark BB. Discovery of cryptic species among North American pine-feeding *Chionaspis* scale insects (Hemiptera: Diaspididae). *Biol J Linn Soc*. 2011; 104(1):47–62.
6. Wang X-B, Deng J, Zhang J-T, Zhou Q-S, Zhang Y-Z, Wu S-A. DNA barcoding of common soft scales (Hemiptera: Coccoidea: Coccidae) in China. *Bull Entomol Res* [Internet]. 2015; 105:1–10. Available from: <http://www.ncbi.nlm.nih.gov/pubmed/25989705>
7. Amouroux P, Crochard D, Germain JF, Correa M, Ampuero J, Groussier G, et al. Genetic diversity of armored scales (Hemiptera: Diaspididae) and soft scales (Hemiptera: Coccidae) in Chile. *Sci Rep*. 2017; 7(1).
8. Daane KM, Middleton MC, Sforza RFH, Kamps-Hughes N, Watson GW, Almeida RPP, et al. Determining the geographic origin of invasive populations of the mealybug *Planococcus ficus* based on molecular genetic analysis. *PLoS One* [Internet]. 2018; 13(3):e0193852. Available from: <http://dx.plos.org/10.1371/journal.pone.0193852> PMID: 29565996
9. Cooper ML, Daane KM, Middleton MC, Walton VM, Walsh DB, Zaviezo T. Development of a Multiplex PCR for Identification of Vineyard Mealybugs. 2011;1595–603.
10. Correa MCG, Lombaert E, Malausa T, Crochard D, Alvear A, Zaviezo T, et al. Mealybug species from Chilean agricultural landscapes and main factors influencing the genetic structure of *Pseudococcus viburni*. *Sci Rep* [Internet]. 2015; 5(October):16483. Available from: <http://www.nature.com/articles/srep16483>
11. Correa MCG, Palero F, Dubreuil N, Etienne L, Hulak M, Tison G, et al. Molecular characterization of parasitoids from armored scales infesting citrus orchards in Corsica, France. *BioControl* [Internet]. 2016; 61(6):639–47. Available from: <http://link.springer.com/10.1007/s10526-016-9752-1>
12. de León JH, Neumann G, Follett PA, Hollingsworth RG. Molecular Markers Discriminate Closely Related Species & Encarsia diaspidicola and Encarsia berleseii (Hymenoptera: Aphelinidae): Biocontrol Candidate Agents for White Peach Scale in Hawaii. *J Econ Entomol* [Internet]. 2010; 103(3):908–16. Available from: <https://academic.oup.com/jee/article-lookup/doi/10.1603/EC09316> PMID: 20568638
13. Noyes JS. Universal Chalcidoidea Database [Internet]. World Wide Web electronic publication. World Wide Web electronic publication; 2018. p. <http://www.nhm.ac.uk/chalcidoids>.
14. Qin Y-G, Zhou Q-S, Yu F, Wang X-B, Wei J-F, Zhu C-D, et al. Host specificity of parasitoids (Encyrtidae) toward armored scale insects (Diaspididae): Untangling the effect of cryptic species on quantitative food webs. *Ecol Evol* [Internet]. 2018;(March):1–15. Available from: <http://doi.wiley.com/10.1002/ece3.4344>
15. Qin Y, Zhou Q, Yu F, Wei XWJ, Zhu C, Zhang Y. Host specificity of parasitoids (Encyrtidae) toward armored scale insects (Diaspididae): Untangling the effect of cryptic species on quantitative food webs. *Ecol Evol*. 2018; 8:7879–93. <https://doi.org/10.1002/ece3.4344> PMID: 30250670



16. Price BW, Henry CS, Hall AC, Mochizuki A, Duelli P, Brooks SJ. Singing from the grave: DNA from a 180 year old type specimen confirms the identity of *chrysoperla carnea* (Stephens). PLoS One [Internet]. 2015; 10(4). Available from: <http://dx.doi.org/10.1371/journal.pone.0121127>
17. Şenal D, Demirözler O, Karaca I. Investigation on the storage possibilities of *Rhyzobius lophantae* Blaisdell (Coleoptera: Coccinellidae) at different temperatures and periods. *Phytoparasitica*. 2017; 45(2):175–82.
18. Xilema. Xilema, control biológico [Internet]. Agentes de control biológico. 2018 [cited 2018 Jul 5]. [www.xilema.cl](http://www.xilema.cl)
19. Rojas S. Control biológico de plagas en Chile: Historia y Avances. Colección. Instituto de Investigaciones Agropecuarias, editor. La Cruz, Chile; 2005. 123 p.
20. Zuñiga ES. Ochenta años de control biológico en Chile. Revisión histórica y evaluación de los proyectos desarrollados (1903–1983). *Agric Tec*. 1985; 45(3):175–83.
21. Klein Koch C. Aspectos generales del control biológico e integrado de plagas en Chile. *Bol Serv Plagas*. 1977; 3:121–32.
22. R Core Team. R: A language and environment for statistical computing [Internet]. Team RDC, editor. R: A language and environment for statistical computing. R Foundation for Statistical Computing, Vienna, Austria. Vienna, Austria: R Foundation for Statistical Computing; 2017. (R Foundation for Statistical Computing). <http://www.r-project.org/>
23. Becker RA, Wilks AR, Brownrigg R, Minka TP. maps: Draw Geographical Maps [Internet]. R package version 2.3–6. 2013. <http://cran.r-project.org/package=maps>
24. Malausa T, Delaunay M, Fleisch A, Groussier-Bout G, Warot S, Crochard D, et al. Investigating Biological Control Agents for Controlling Invasive Populations of the Mealybug *Pseudococcus comstocki* in France. Lutermann H, editor. PLoS One [Internet]. 2016 Jun 30; 11(6):e0157965. Available from: <http://dx.plos.org/10.1371/journal.pone.0157965> PMID: 27362639
25. Malausa T, Fenis A, Warot S, Germain J, Ris N, Prado E, et al. DNA markers to disentangle complexes of cryptic taxa in mealybugs (Hemiptera: Pseudococcidae). *J Appl Entomol*. 2011; 135(1–2):142–55.
26. Stucky BJ. Seqtrace: A graphical tool for rapidly processing DNA sequencing chromatograms. *J Biomol Tech*. 2012; 23(3):90–3. <https://doi.org/10.7171/jbt.12-2303-004> PMID: 22942788
27. Castresana J. Selection of conserved blocks from multiple alignments for their use in phylogenetic analysis. *Mol Biol Evol*. 2000; 17(4):540–52. <https://doi.org/10.1093/oxfordjournals.molbev.a026334> PMID: 10742046
28. Kumar S, Stecher G, Tamura K. MEGA7: molecular evolutionary genetics analysis version 7.0 for bigger datasets. *Mol Biol Evol* [Internet]. 2016; 33(7):1870–4. Available from: <https://academic.oup.com/mbe/article-abstract/33/7/1870/2579089> PMID: 27004904
29. Thompson J, Higgins D, Gibson T. CLUSTAL W: improving the sensitivity of progressive multiple sequence alignment through sequence weighting, position-specific gap penalties and weight matrix choice. *Nucleic Acids Res*. 1994; 22(22):4673–80. PMID: 7984417
30. Paradis AE, Bolker B, Claude J, Cuong HS, Desper R, Du-B, et al. Package ‘ape.’ 2011;
31. Dray S, Dufour A-B. The ade4 Package: Implementing the Duality Diagram for Ecologists. *J Stat Softw* [Internet]. 2007; 22(4):1–20. Available from: <http://www.jstatsoft.org/v22/i04/>
32. Schliep KP. phangorn: phylogenetic analysis in R. *Bioinformatics*. 2011; 27(4):592–3. <https://doi.org/10.1093/bioinformatics/btq706> PMID: 21169378
33. Puillandre N, Lambert A, Brouillet S, Achaz G. ABGD, Automatic Barcode Gap Discovery for primary species delimitation. *Mol Ecol*. 2012; 21(8):1864–77. <https://doi.org/10.1111/j.1365-294X.2011.05239.x> PMID: 21883587
34. Zhang J, Kapli P, Pavlidis P, Stamatakis A. A general species delimitation method with applications to phylogenetic placements. *Bioinformatics*. 2013; 29(22):2869–76. <https://doi.org/10.1093/bioinformatics/btt499> PMID: 23990417
35. Pagel M, Meade A. A phylogenetic mixture model for detecting pattern-heterogeneity in gene sequence or character-state data. *Syst Biol*. 2004; 53(4):571–81. <https://doi.org/10.1080/10635150490468675> PMID: 15371247
36. Ronquist F, Huelsenbeck JP. MrBayes 3: Bayesian phylogenetic inference under mixed models. *Bioinformatics*. 2003; 12(19):1572–4.
37. Swofford DL, Olse DP. PAUP: Phylogenetic Analysis Using Parsimony. Sunderland, Massachusetts, USA: Sinauer Associates; 1993.
38. Heraty JM, Burks RA, Cruaud A, Gibson GAP, Liljeblad J, Munro J, et al. A phylogenetic analysis of the megadiverse Chalcidoidea (Hymenoptera). *Cladistics*. 2013; 29(5):466–542.

39. Noyes J.S. Collecting and preserving chalcid wasps (Hymenoptera: Chalcidoidea). Vol. 16, *Journal of Natural History—J NATUR HIST.* 1982. 315–334 p.
40. Guerrieri E, Noyes JS. Revision of European species of genus *Metaphycus mercet* (Hymenoptera: Chalcidoidea: Encyrtidae), parasitoids of scale insects (Homoptera: Coccoidea). *Syst Entomol.* 2000; 25(2):147–222.
41. Viggiani G, Guerrieri E. Italian species of the genus *Metaphycus Mercet* (Hymenoptera: Encyrtidae). *Boll del Lab di Entomol Agrar “Filippo Silvestri”.* 1989; 45:113–40.
42. Compere H. A revision of the species of *Coccophagus*, a genus of hymenopterous, coccid-inhabiting parasites. *Proc United States Natl Museum.* 1931; 78(7):1–132.
43. Rosen D, DeBach P. Species of *Aphytis* of the world (Hymenoptera: Aphelinidae). *Series Entomologica*, Vol. 17. Israel University Press, editor. Jerusalem: Dr. W. Junk Publishers; 1979. 801 p.
44. Myartseva SN, Ruiz-Cancino E, Coronado-Blanco JM. Aphelinidae (Hymenoptera: Chalcidoidea) de importancia agrícola en México. Revisión y claves. Serie avisas parasiticas de plagas y otro insectos. No. 8. Tamaulipas UA de, editor. Ciudad Victoria; 2012. 400 p.
45. Ramírez-Ahuja MDL, Dal Molin A, González-Hernández A, Woolley JB. Sinopsis y clave para la identificación de las especies de *Signiphora* (Hymenoptera: Signiphoridae) de México, con notas sobre biología y distribución. *Rev Mex Biodivers [Internet].* 2015; 86(2):337–47. Available from: <http://dx.doi.org/10.1016/j.rmb.2015.04.026>
46. Woolley JB, Dal Molin A. Taxonomic revision of the flavopallata species group of *Signiphora* (Hymenoptera: Signiphoridae). Vol. 4315, *Zootaxa.* 2017. 1–150 p.
47. Dormann CF, Gruber B, Frund J. Introducing the bipartite Package: Analysing Ecological Networks. *R News [Internet].* 2008; 8(2):8–11. Available from: <http://www.r-project.org/doc/Rnews/>
48. Chesters D, Wang Y, Yu F, Bai M, Zhang TX, Hu HY, et al. The integrative taxonomic approach reveals host specific species in an encyrtid parasitoid species complex. *PLoS One.* 2012; 7(5):1–11.
49. Nikol'skaya MN, Yasnosh VA. Aphelinids of the european part of the USSR and the Caucasus (Hymenoptera: Aphelinidae). *Opredeliteli Faune SSSR.* 1966; 91:1–296.
50. Zhou QS, Polaszek A, Qin YG, Yu F, Wang XB, Wu SA, et al. Parasitoid–host associations of the genus *coccophagus* (Hymenoptera: Aphelinidae) in China. *Zool J Linn Soc.* 2018; 182(1):38–49.
51. Ripa R, Larral P. Manejo de plagas en paltos y cítricos. Colección. Ripa R, Larral P, editors. Vol. 23, Colección Instituto de Investigaciones Agropecuarias. La Cruz, Chile; 2008. 399 p.
52. Henry CS, Brooks SJ, Duelli P, Johnson JB, Wells MM, Mochizuki A. Obligatory duetting behaviour in the *Chrysoperla carnea*-group of cryptic species (Neuroptera: Chrysopidae): Its role in shaping evolutionary history. *Biol Rev.* 2013; 88(4):787–808. <https://doi.org/10.1111/brv.12027> PMID: 23433087
53. Gonzalez G. Los coccinellidae de Chile [online]. [www.Coccinellidae.Cl](http://www.Coccinellidae.Cl). 2006.