



Title	Morphofunctional analysis of antigen uptake mechanisms following sublingual immunotherapy with beads in mice
Author(s)	Elewa, Yaser Hosny Ali; Mizoguchi, Tatsuya; Ichii, Osamu; Nakamura, Teppei; Kon, Yasuhiro
Citation	PLoS ONE, 13(12), e0201330 <a href="https://doi.org/10.1371/journal.pone.0201330">https://doi.org/10.1371/journal.pone.0201330</a>
Issue Date	2018-12-20
Doc URL	<a href="http://hdl.handle.net/2115/73351">http://hdl.handle.net/2115/73351</a>
Rights(URL)	<a href="https://creativecommons.org/licenses/by/4.0/">https://creativecommons.org/licenses/by/4.0/</a>
Type	article
File Information	PLoS ONE 13(12)_e0201330-.pdf



[Instructions for use](#)

RESEARCH ARTICLE

# Morphofunctional analysis of antigen uptake mechanisms following sublingual immunotherapy with beads in mice

Yaser Hosny Ali Elewa<sup>1,2</sup>\*, Tatsuya Mizoguchi<sup>2</sup>, Osamu Ichii<sup>2</sup>, Teppei Nakamura<sup>2,3</sup>, Yasuhiro Kon<sup>2</sup>

**1** Department of Histology and Cytology, Faculty of Veterinary Medicine, Zagazig University, Zagazig, Egypt, **2** Faculty of Veterinary Medicine, Basic Veterinary Sciences, Laboratory of Anatomy, Hokkaido University, Sapporo, Japan, **3** Section of Biological Science, Chitose Laboratory, Japan Food Research Laboratories, Chitose, Japan

\* These authors contributed equally to this work.

\* [y-elewa@vetmed.hokudai.ac.jp](mailto:y-elewa@vetmed.hokudai.ac.jp), [yaserelewa@zu.edu.eg](mailto:yaserelewa@zu.edu.eg)



## Abstract

### Background

Recently, sublingual immunotherapy (SLIT) has been used as a safe and efficient method for the treatment of and immunization against asthma and various allergies. However, the routes of antigen/allergen (particulate antigen) uptake through the mucosa of the oral cavity remain incompletely understood, as do the roles of sex and age in the process. For this purpose, to elucidate the mechanism and efficacy of SLIT among different sexes and ages, microbeads were dripped into the sublingual region to mimic particulate antigen uptake by the sublingual mucosa.

### Methods

Twenty microliters of either phosphate buffered saline (PBS) or fluorescently labelled microbeads (latex and silica beads) were placed under the tongue of both male and female C57BL/6 mice at young (3 months) and old (6 months) ages. The lower jaw was examined 30 min after administration, and beads were detected with a fluorescence stereomicroscope. Morphological observations of the mucosa of the fluorescent areas were made with a scanning electron microscope (SEM) and an all-in-one light fluorescence microscope (LM). Fluorescence intensity was compared between both sexes and ages.

### Results

Stereomicroscopic observation revealed fluorescent illuminations in three compartments of the sublingual mucosa: the sublingual caruncles (SC), the oral rostral mucosa (OR) and the buccal mucosa (BM). Interestingly, the fluorescence intensity tended to be higher among females than among males in the SC region in particular. However, there were no significant age-related differences. SEM and LM revealed beads in the lumina of both mandibular

## OPEN ACCESS

**Citation:** Elewa YHA, Mizoguchi T, Ichii O, Nakamura T, Kon Y (2018) Morphofunctional analysis of antigen uptake mechanisms following sublingual immunotherapy with beads in mice. PLoS ONE 13(12): e0201330. <https://doi.org/10.1371/journal.pone.0201330>

**Editor:** Heinz Fehrenbach, Forschungszentrum Borstel Leibniz-Zentrum für Medizin und Biowissenschaften, GERMANY

**Received:** July 6, 2018

**Accepted:** December 3, 2018

**Published:** December 20, 2018

**Copyright:** © 2018 Elewa et al. This is an open access article distributed under the terms of the [Creative Commons Attribution License](https://creativecommons.org/licenses/by/4.0/), which permits unrestricted use, distribution, and reproduction in any medium, provided the original author and source are credited.

**Data Availability Statement:** All relevant data are within the paper and its Supporting Information files.

**Funding:** This work was supported in part by funding from JSPS KAKENHI Grant Numbers 17K15388 and by the Hokkaido University Tenure Track Program.

**Competing interests:** The authors have declared that no competing interests exist.

ducts and sublingual ducts (Sd). Additionally, the apical cytoplasm of some Sd cells contained silica beads. However, there was no specification in the OR mucosa or BM.

## Conclusions

This study reveals the major role Sd plays in local immunity via the antigen uptake mechanisms. Furthermore, our data suggest that the efficacy of SLIT in humans could be affected by sex.

## Introduction

In both humans and animals, the prevalence of allergic diseases such as seasonal rhinitis and atopic dermatitis has increased substantially in recent decades [1–3]. The symptoms accompanying such allergic conditions range in severity. Mild symptoms such as nasal discharge, itching and sneezing may cause disturbances in the patient's daily life and affect productivity, while severe ones such as chronic allergic rhinitis can lead to loss of smell or other complications [4]. Therefore, establishing countermeasures against the development of allergic conditions is an important issue in both the medical and veterinary fields.

Treatment for allergic diseases is currently based primarily on symptomatic therapy to reduce inflammation; antihistamines and steroids are widely used for this [5, 6]. However, immune induction therapy has attracted attention in recent years. Among them is sublingual immunotherapy (SLIT), which is allergen-specific. In SLIT, the allergens or antigens are administered to the lower part of the tongue and may provide sustained and safe therapeutic effects [7–9]. With this method, the amount of antigen administered to the lower part of the tongue is gradually increased to induce immune tolerance and improve the patient's hypersensitivity reaction, especially their allergic symptoms [10]. Interestingly, because SLIT administration and postoperative management are so straightforward, recently there has been increasing interest in the clinical application of SLIT in humans [11], as well as in the treatment of atopy and mite allergies in dogs [12].

Antigen uptake through the sublingual mucosa following SLIT is the mechanism by which antigen-specific immune tolerance is induced. Therefore, immunological and morphologic functional evaluations of the oral mucosa are essential for further characterization of this mechanism. From an immunological point of view, several previous reports have suggested that antigen-presenting cells "APCs" (dendritic cells, macrophages) and regulatory T-cells in the sublingual mucosa play a key role in antigen uptake and induction of immune tolerance following SLIT [13–17]. Furthermore, a recent report revealed the role of APCs in sublingual ductal epithelial cells in the transportation of sublingual antigen. This was shown using soluble antigens such as ovalbumin and particulate antigens such as *E. coli*, latex beads (Lt) and silica beads (Si) [18]. Moreover, it has been revealed that bacterial infection of the salivary glands may result from bacteria ascending through salivary gland ducts and stasis of salivary flow through the ducts [19]. This suggests that salivary gland ducts play a role in antigen uptake. After morphological analysis of the different compartments of the oral mucosa, their roles in antigen uptake remains unclear. Interestingly, sexual dimorphism of the rodent submandibular gland granular duct (granular convoluted tubule) has been reported [20]. Further, it has been revealed that aging affects the structure of salivary glands [21]. However, there have been no reports regarding differences in the therapeutic efficacy of SLIT between patients of different sexes or ages. A recent report [18] revealed evidence that the sublingual ductal system can

incorporate both soluble antigens, such as OVA, and particulate materials such as Lt and Si beads and deliver sublingual antigens to ductal APCs with the same efficacy. Furthermore, both Lt and Si beads had uniform sizes and shapes (microspherical appearance and fixed diameters 0.75 and 0.8  $\mu\text{m}$ , respectively) that can be correctly identified morphologically using both scanning and stereomicroscope. Therefore, in this study we morphologically analyzed the bead accumulation sites in the oral cavity mucosa of young and old mice of both sexes following sublingual administration of either Lt or Si. The accumulation sites reflect the specific anatomic regions of antigen uptake. We found that the bead-derived fluorescence was mainly observed in the dorsal part of the sublingual caruncle (SC), as well as in the oral rostral (OR) and buccal mucosa (BM) of the oral cavity proper. Interestingly, the fluorescence intensity was higher in the SC and OR mucosa than that in the BM. Further, the females tended to demonstrate higher intensity than males. In the Lt but not Si beads group, significant sex differences were observed, especially in the SC region. However, no significant age-related changes were observed in either bead group. We suggest that the localization of the beads could be affected by the sex and the material of the bead. Furthermore, we suggest that the dorsal part of the SC may play an important role in local immunity related to the antigen uptake mechanism.

## Materials and methods

### Ethics statement

The investigators conducted experiments in accordance with the guidelines for the Care and Use of Laboratory Animals, Hokkaido University, Graduate School of Veterinary Medicine (certified by the Association for Assessment and Accreditation of Laboratory Animal Care International). All experiments were conducted according to the protocols approved by the Institutional Animal Care and Use Committee of the Graduate School of Veterinary Medicine, Hokkaido University, Japan (approval No. 15-0079).

### Experimental animals and experimental design

Male and female C57BL/6N (B6) mice of both young age (12–16 ws) and old age (24–36 ws) were purchased from Japan SLC (Hamamatsu, Japan) and were used for each experiment (4 mice/each experimental group). They were anesthetized via intraperitoneal administration of a mixture of medetomidine (0.3 mg/kg), midazolam (4.0 mg/kg) and butorphanol (5.0 mg/kg). Subsequently, male and female mice of each age received 20  $\mu\text{L}$  of either phosphate buffered saline (PBS) (control groups) or 1% fluorescence-labelled beads suspended in PBS (experimental groups) on the lower part of the tongue after the tongues were raised with tweezers (Figure a in [S1 Fig](#)). The experimental groups were subdivided into a latex (Lt) group, which received latex beads (Fluoresbrite YG carboxylate microspheres, diameter 0.75  $\mu\text{m}$ , 1% Polyscience, Warrington, PA., USA), and a silica (Si) group, which received silica beads (diameter 0.8  $\mu\text{m}$ , 50 mg/mL; Micromod Partikel technologie GmbH, Warnemunde, Germany). Thirty minutes after the beads were applied, the common carotid artery was cut, and the mice were euthanized by exsanguination. The lower jaw was then separated from the upper one and washed with 0.01 M PBS. The appropriate concentrations and time-dependent resorption and binding of beads were determined according to our preliminary study ([S2](#) and [S3 Figs](#)).

### For stereoscopic microscopic observation

The sublingual mucosa was examined with a stereomicroscope after cutting the free tip of the tongue. The sites of fluorescently labelled bead accumulation were observed and photographed

using the fluorescent stereomicroscope (AXIO ZOOM-V 16, ZEISS, Tokyo, Japan) for all experimental groups and compared with the control group.

### Tissue preparation for light microscopic observation

Following fixation of the lower jaw in either 10% neutral buffered formalin at 4 °C for 24 hr or 4% paraformaldehyde (4 °C, overnight), the samples were decalcified in formic acid at room temperature for 2 days. After washing the samples in PBS three times, for 5 min each, the sublingual region was separated just caudal to the SC region under the stereoscopic microscope. The sublingual region was then dehydrated in ascending grades of alcohol, and embedded in paraffin. Three  $\mu\text{m}$  serial paraffin sections of the sublingual region were prepared, stained with hematoxylin and eosin (HE). The stained sections were then observed and photographed using BZ-X710 all-in-one fluorescence microscope (Keyence, Osaka, Japan).

### Tissue preparation for scanning electron microscopy

In the silica bead and control groups, the lower jaw was fixed with 2.5% glutaraldehyde (4 °C, overnight). Thereafter, it was immersed six times in a 0.1 M PBS (pH 7.4) for 10 minutes each. Subsequently, at 4 °C, the samples were rinsed in a 0.5% tannic acid solution for 10 minutes and 1.0% tannic acid solution for 1 hour, and then in 0.1 M phosphoric acid. After washing in PBS for 15 min, the specimens were dehydrated stepwise using a series of graded ethanol. After dehydration, the samples were transferred into a mixture of 100% ethyl alcohol and isoamyl acetate (1:1), then kept for 20 min twice in isoamyl acetate solution, and dried in a critical point drier (HCP-2, Hitachi, Tokyo, Japan). Thereafter, the dried samples were fixed on aluminum stubs with double-faced adhesive tabs. Surface treatment with a 20-nm thick platinum layer was carried out with ion sputtering (E-1030, Hitachi, Tokyo, Japan) for 1 min. The samples were then observed and photographed using a scanning electron microscope (SU 8000 field emission scanning electron microscope, Hitachi, Tokyo, Japan, conditions of 10 kV).

### Histoplanimetry

To calculate the fluorescence detection rate within different sublingual compartments of both the Lt and Si bead groups, the number of samples in which fluorescence was observed in the SC, OR, and BM mucosa was calculated and divided by the total number of analyzed samples. Moreover, for evaluation of the fluorescence intensity as an indicator of bead accumulation, images from the experimental group samples were captured. Following this, the photographed image was monochromatized using JTrim (free software, manufactured by Woody Bells, Japan). Thereafter, the luminance was measured ten times (ImageJ; NZH, Bethesda, MD, USA) at each of the sites SC, OR and BM. The average value was quantified and defined as the fluorescence intensity. This value was then compared with the control non-fluorescent area.

### Statistical analysis

The fluorescence intensities in the measurement sites (SC, OR, BM) when compared to that of negative control area in each group were analyzed by the Dunnett t method after the Kruskal-Wallis test to determine any significant difference. The differences of the fluorescence intensities between groups were compared using the Scheffé's method after the Kruskal-Wallis test. The analysis of the gender and age group differences was conducted using Mann-Whitney *U* test. In all analyses, a *P* value < 0.05 was regarded as a significant difference.

## Results

### Morphological observation of sublingual mucosa in mouse lower jaw following PBS or bead administration

In the experimental group, the fluorescently labelled bead accumulations in the sublingual mucosa were mainly observed in three sites: the caudal protrusion that represents the SC; two lateral sides that represent the BM; and at a depression in the median rostral position just behind the incisor teeth that represents the OR and appeared as an elliptical fluorescence accumulation site. An area with weak fluorescent illuminations cranial to the SC was used as a negative control area (Figures b and c in [S1 Fig](#)). With SEM, the SC appeared as a paired mucosal protrusion of average width 400 μm. The BM appeared as two lateral grooves extending toward the rostral side at the boundary between the buccal mucosa and the bottom of the oral cavity proper. The OR appeared as a median depression (about 150 μm × 700 μm) on the caudal side of the lower incisor teeth (Figure c in [S1 Fig](#)). In the control group, no fluorescence could be observed by fluorescent stereomicroscope (Figure d in [S1 Fig](#)).

### Fluorescence detection rates and intensities in SC, BM, and OR among young and old ages of both sexes

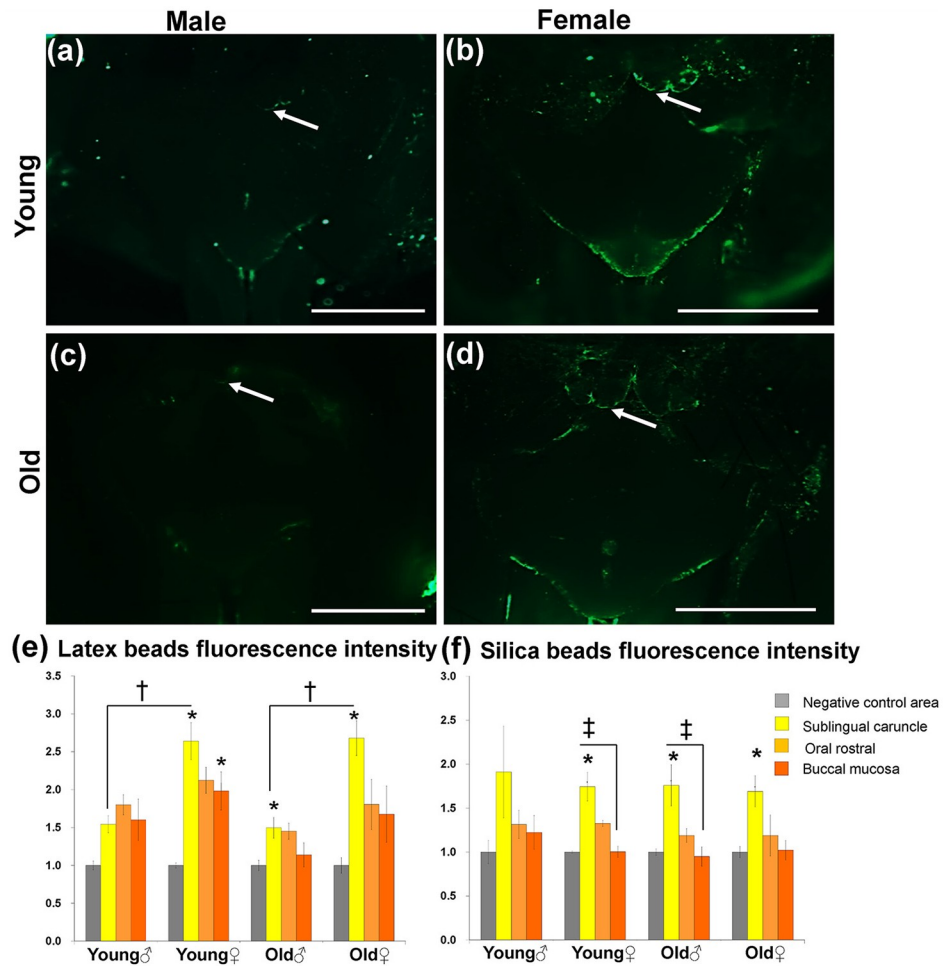
As shown in [Table 1](#), we compared the fluorescence detection rates in the SC, BM, and OR sites in young and old groups of males and females in both Lt and Si bead experimental groups. In the Lt bead experiment group, the fluorescence was detected at a rate as high as 100% of the average detection rate of all groups in the OR site. The average detection rate in the SC was 87.5%. The BM had lower values than the other two sites (69%). The old female group had a detection rate of 100% at all three sites. In the Si bead experimental groups, the young and old female group showed 100% detection rate in the OR and the SC. The detection rate in the old males group was 75%. Furthermore, the average fluorescence detection rate in the BM among all groups was lower than in the other two sites (50%).

Additionally, we analyzed the fluorescence detection and intensities in both Lt and Si bead groups among young and old groups, as well as among male and female ([Fig 1](#)). In Lt bead administration, the females in both young and old groups tended to exhibit stronger fluorescence at all sites (SC, OR, and BM) than males did ([Fig 1a–1d](#)). Interestingly, the SC in females showed stronger fluorescently labelled bead accumulations ([Fig 1b and 1d](#)) than those in males ([Fig 1a and 1c](#)) in both age groups. However, neither sex nor age-related changes were

**Table 1. Fluorescence detection rate (percentage) of the both Si and Lt beads among different sites, ages, and sexes.**

A- Latex bead group	Sublingual caruncle	Oral rostral	Buccal mucosa
Young male	75.0	100.0	50.0
Young female	100.0	100.0	75.0
Old male	75.0	100.0	50.0
Old female	100.0	100.0	100.0
<b>Average</b>	87.5	100.0	68.8
B- Silica bead group			
Young male	100.0	100.0	50.0
Young female	100.0	100.0	50.0
Old male	75.0	75.0	25.0
Old female	100.0	100.0	75.0
<b>Average</b>	93.8	93.8	50.0

<https://doi.org/10.1371/journal.pone.0201330.t001>



**Fig 1. Localization of fluorescent beads in the oral mucosa of the lower jaw in the latex beads group (a-d).** Fluorescence microscopy observation in both the young group (a and b) and old group (c and d). Notice stronger fluorescence in the young and old female groups than in male groups in particular for SC (white arrow). Scale bars = 1 mm. Graphs showing the fluorescence intensities in both Lt (e) and Si (f) bead groups. The fluorescence intensity was measured for the SC, OR, BM, and the numerical value was obtained by scoring the negative control value as 1.0. Values are given as the mean  $\pm$  SE, \*: Significant difference in the measurement sites (SC, OR, BM) from the negative control in each group (Kruskal-Wallis test, Dunnett t method,  $P < 0.05$ ). †: Significant difference between sexes (Mann-Whitney U test), ‡: Significant difference between sites (Kruskal-Wallis test, Scheffé's method), ( $n = 4$ / each group).

<https://doi.org/10.1371/journal.pone.0201330.g001>

observed in the OR and BM. On the other hand, weaker fluorescently labelled bead accumulations were observed in the Si bead group than that in the Lt group at all sites. Further, in the Si bead group, the fluorescently labelled bead accumulations tended to be slightly stronger in the SC than other sites (Fig 1f).

To determine variations in bead accumulations among both the Lt and Si bead groups and among both ages and sexes, the fluorescence intensity was quantified by an image analysis method in all accumulation sites (Fig 1e and 1f) in comparison with the negative control area (reference value = 1.0) (Fig b in S1 Fig). In the Lt bead group, the fluorescence intensity in the SC, OR, and BM tended to have a higher value than in the negative control area in both age and sex groups. The intensity had significantly higher values in the SC of the young male group and young female group and the BM of the young female group. Furthermore,



significant differences in SC fluorescence intensity were found between males and females in both the young and old groups (Fig 1e).

In the Si bead group, as with the Lt group, the SC tended to have a higher value than the negative control area in all groups. Moreover, except for the young male group, the fluorescence intensity in the SC was significantly higher than in the negative control area. Additionally, the fluorescence intensity in the SC of the young female and old male groups was significantly higher than in the BM. On the other hand, there was no sex difference as in the Lt bead group (Fig 1e). No significant age-related changes were observed in both bead groups (Fig 1e and 1f).

### SEM and light microscopic observations of the structure of sublingual mucosa in mouse lower jaw

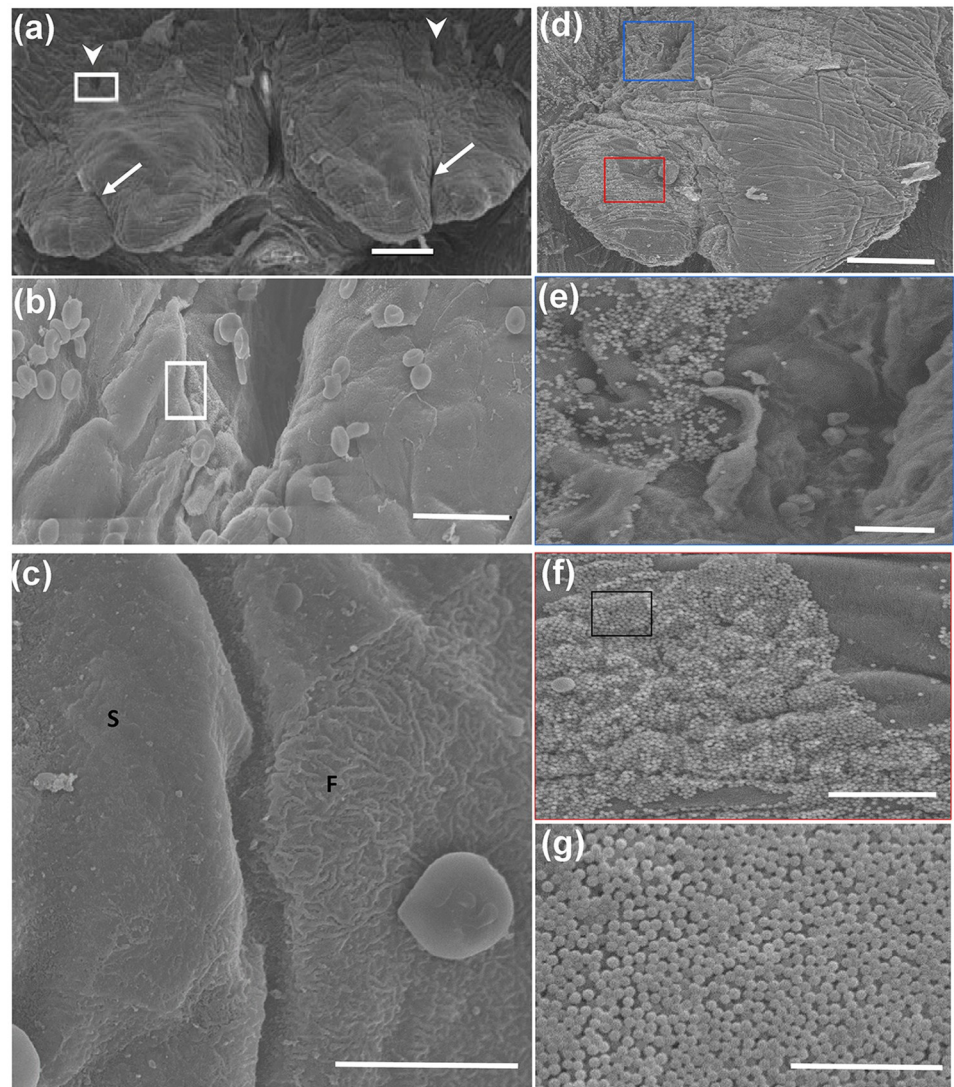
SEM observation of the mucosal surface morphology among both sexes revealed that there were no remarkable differences between the sexes. The SEM observation revealed that the SC in the control group (female, 3 months old) appeared as a pair of right and left protrusions. A groove was observed in the central part of the protrusion extending toward the rostral side. In addition, a deep depression (approximately 30  $\mu\text{m}$  long and 10  $\mu\text{m}$  wide) was seen on the dorsal surface of the caudal side of the SC (Fig 2a and 2b). The dorsal surface of this depression was smooth; however, the surface of the edge that bordered the depression showed fine folds (Fig 2c). The SEM of the dorsal surface of the SC in the Si bead group revealed numerous beads around the depression on the dorsal surface of the caudal side of the SC and along the groove extending in the SC (Fig 2d–2f). The Si beads were observed as spherical particles of well-defined size (Fig 2g).

We then examined the distribution of fluorescently labelled Si beads in H&E stained paraffin sections. The two sublingual and mandibular ducts opened separately into the sublingual mucosa (Figs 3 and 4a–4f). The sublingual ducts (Sd) opened directly into the sublingual mucosa (Fig 3a–3f); however, the mandibular ducts opened into the ventral and medial side of the SC (Fig 4a–4f). The epithelium lining the submucosa was keratinized stratified squamous type, but it became non-keratinized at the opening of both ducts (Figs 3d–3f and 4d–4f). Numerous fluorescently labelled Si beads were observed on the dorsal surface of the sublingual mucosa, especially that of the SC and near the opening of the sublingual ducts (Fig 3a–3f). Moreover, beads were observed in the lumina of both ducts (Figs 3e–3f and 4e–4f). Interestingly, fluorescently labelled Si beads were observed in the apical cytoplasm of some cells lining the sublingual ducts (Fig 3h–3k), but not in that of the mandibular ducts (Fig 4e and 4f).

The SEM observation of the BM in both control (Fig 4g) and Si bead group (Fig 4h and 4i) revealed the smooth surface of the BM. In the experimental groups, Si beads could be observed on the dorsal surface of the BM, but fewer in number than that in the SC, OR (Fig 4i). Examination of the H&E stained serial sections revealed a slight recess representing the BM (Fig 4a–4c) in which few Si beads were observed (Fig 4j–4l). The epithelium lining the BM was keratinized stratified but was thinner than the surrounding epithelium and consisted of 2–3 layers (Fig 4a–4c and 4j–4l).

The SEM observation of the OR of the control group revealed a shallow median depression with a smooth dorsal surface and edge (Fig 5a–5c). In experimental groups, many Si beads were observed both on the dorsal surface and in the groove (Fig 5d–5f). In the H&E stained sections, the mucosa of the OR showed a shallow depression that was lined by keratinized stratified squamous epithelium of slightly less thickness than the surrounding mucosa. Few Si beads were observed attaching to the outer keratinized layer (Fig 5g–5l).



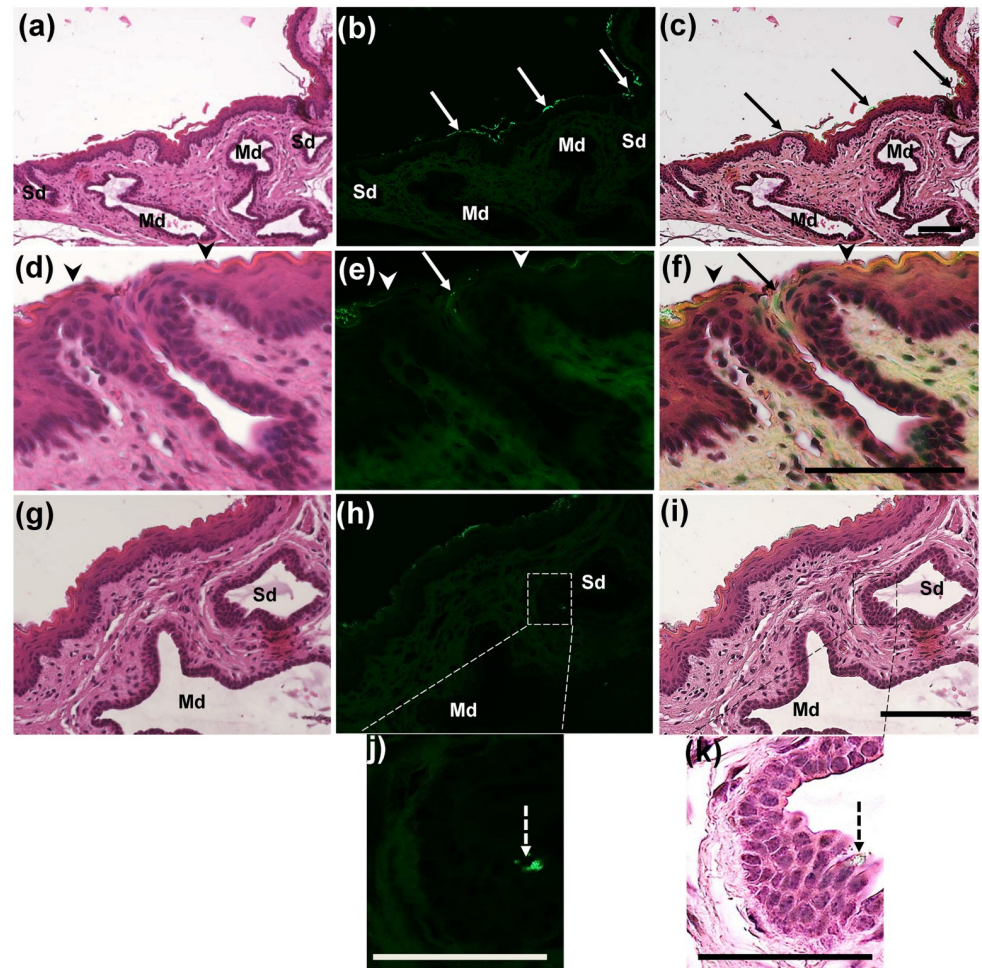


**Fig 2. SEM of the dorsal surface of the SC of the control group (female, 3 months old) (a-c) and silica bead group (d-g).** (a) The SC are observed as a pair of left and right protrusions. Notice the central grooves (arrows) and recessed dorsal aspect (arrow heads). Scale bar = 100 μm. (b) Higher magnification of the white framed area in (a). The entrance to the recess can be seen in the center. Notice the boundary between the mucosal epithelial cells of the SC and the epithelial cells constituting the edge of the recess (white frame). Scale bar = 20 μm. (c) Higher magnification of the white boxed area in (b). Notice the smooth surface (S) of the mucosa lining the SC and fine folded surface (F) lining the entrance to the recess. Scale bar = 10 μm. (d) SEM of the dorsal surface of the SC of the experimental group (female, 3 months old). Notice the accumulation of silica beads in the periphery around the tip of the SC (red box) and in the recessed part (blue box) on the dorsal side. Scale bar = 100 μm. (e) Higher magnification of the blue boxed area in (d). Notice numerous silica beads adherent to the mucosal surface around the recess. (f) Higher magnification of the red boxed area in (d). (g) Higher magnification of the boxed area in (f). Notice the silica beads with a spherical uniform shape. (d-g) Scale bars = 15 μm, (n = 4/ each group).

<https://doi.org/10.1371/journal.pone.0201330.g002>

## Discussion

SLIT is an effective and safe therapy that has recently been established as a valid method for the treatment of many allergic diseases via the induction of antigen-specific tolerance. It has been used to treat allergic diseases in humans such as allergic rhinitis, allergic rhinoconjunctivitis, and asthma [22–28], as well as those in animals, such as canine atopic dermatitis [2, 29]. Several approaches involving analysis of the immunological status of the oral mucosa have



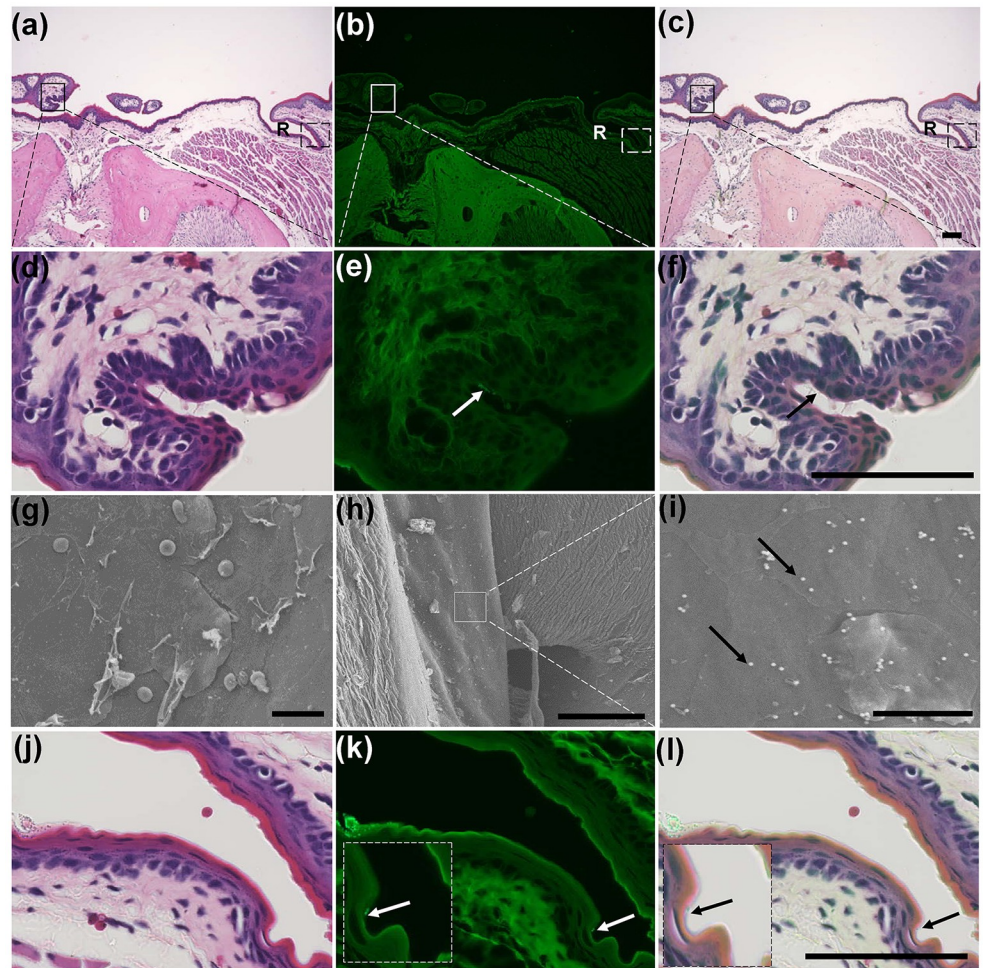
**Fig 3. Fluorescence microscopic observation of the sublingual mucosa at the SC level.** (a-c) Fluorescence microscopic images of H&E stained sections of the mandibular duct (Md) and the opening of the sublingual duct (Sd) into the sublingual mucosa. Notice separate openings of the Md and Sd and numerous fluorescent beads accumulating (arrows) on the sublingual mucosa at the SC region and at the opening of the Sd. (d-f) Fluorescence microscopic images of H&E stained sections of the opening of the Sd. Notice the change of the keratinized epithelium (arrow heads) to non-keratinized type at the opening of the Sd (arrows). (g-i) The wall of the mandibular duct (Md) and the sublingual ducts (Sd). (j, k) Higher magnifications of the boxed areas in figure (h, i). Notice fluorescence beads in the apical cytoplasm of some ductal lining cells (dashed arrows), (n = 4/ each group).

<https://doi.org/10.1371/journal.pone.0201330.g003>

been used to elucidate the mechanism of antigen uptake following SLIT [13–15]. After morphological analysis of the different compartments of the oral mucosa, their roles in antigen uptake remain unclear. Therefore, we undertook a detailed morphological characterization of the sublingual mucosa. This was achieved by administering fluorescent beads into the sublingual region to mimic antigen uptake and induce antigen-specific immune tolerance.

Our data revealed three main sites within the oral cavity where beads accumulated following their sublingual administration (SC, OR, and BM). These sites could reflect the locations where substances tend to stagnate anatomically or the sites where antigen can be taken up. Interestingly, our data revealed that within the same mice, beads accumulated in varying degrees in the three anatomic sites of the sublingual mucosa. The SC, OR, and BM showed higher, moderate, and lower tendency for accumulations, respectively. A previous report explained that there are three features of the oral epithelium (thickness, keratinization, and



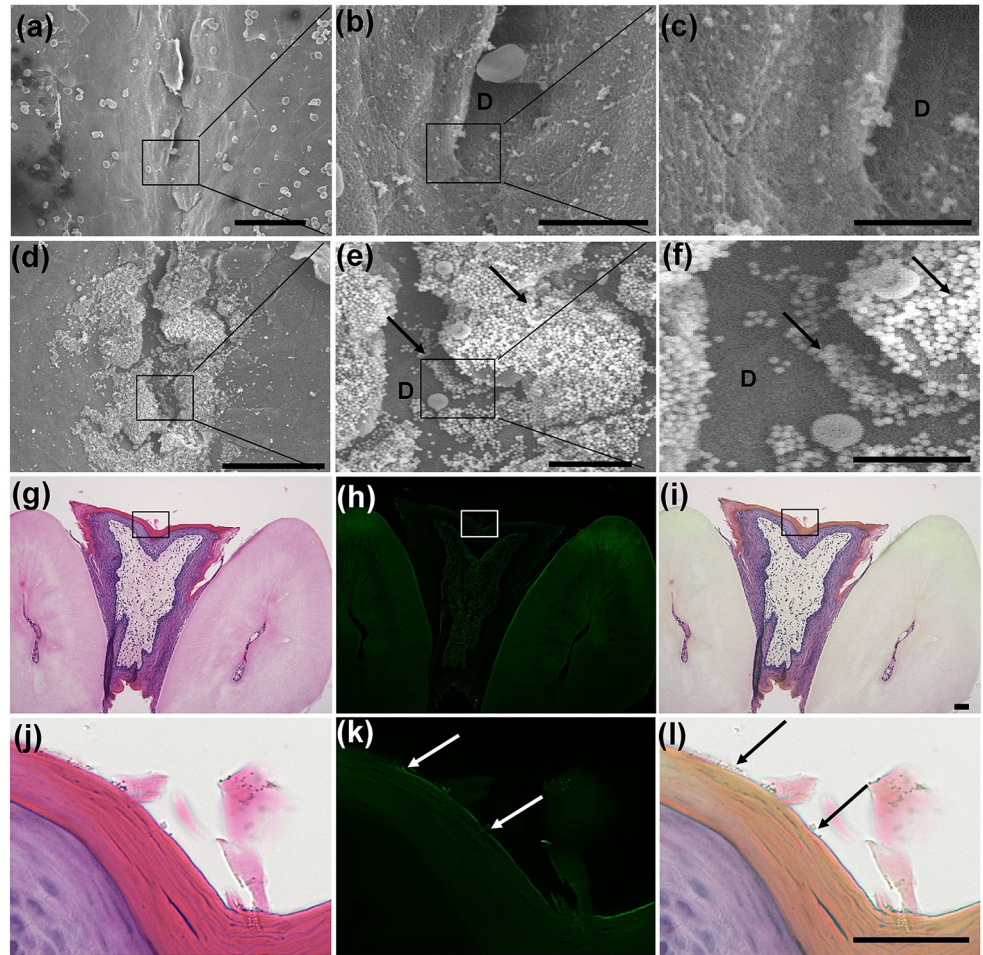


**Fig 4. (a-c) Fluorescence microscopic observation of the sublingual mucosa at the levels of the BM and the opening of Md into the SC.** Notice the opening of the Md into the SC (solid box) and the presence of a slight recess (R) representing the BM. (d-f) Higher magnifications of the boxed areas in figure (a-c). Notice the fluorescent beads in the lumen of the Md (arrows). (g-i) SEM of the dorsal surface of the BM of a 3-month-old female mouse of the control group (g), and the experimental group (h, i). Notice the smooth dorsal surface of the BM and several Si beads (arrows). (j-l) Higher magnifications of the dashed boxed areas in figures (a-c). Notice the fluorescent beads in the recess (arrows), (n = 4/ each group).

<https://doi.org/10.1371/journal.pone.0201330.g004>

rete ridges) that could significantly alter allergen capture following sublingual allergen immunotherapy [30]. In support of this, our study revealed substantial bead accumulation on the dorsal surface of the SC. This was especially heavy near the central groove of the SC and the deep depression, representing the opening sites of the mandibular and sublingual ducts, respectively. Moreover, our SEM and light microscopic data revealed two features of the duct openings that could improve antigen uptake. First, there were abrupt changes in the surface of the duct openings from the surrounding smooth surface. Second, there was a transition of epithelium from keratinized to nonkeratinized at the site of duct openings.

The epithelia lining both the OR and BM were stratified squamous type but had a lower cell thickness than that of the surrounding. Additionally, in the OR site, a shallow depression was observed that could provide greater opportunity for antigen accumulation. In summary, our data suggested that the degree of bead accumulation at different sites could be due to variations in the local environment of the oral cavity, such as the keratinization and morphological variations.



**Fig 5. (a-f) SEM of the dorsal surface of the OR of a 3-month-old female mouse of the control group (a-c), and the experimental group (d-f). Notice a shallow depression (D) with a smooth dorsal surface and a smooth edge. A moderate number of beads were observed in the experimental group (arrows). (g-i) Fluorescence microscopic observation of the sublingual mucosa at the OR level. Notice the slight depression of the mucosa and decreased thickness of the lining epithelium compared to the surrounding epithelium. (j-l) Higher magnifications of the dashed boxed areas in figure (a-c). Notice the few fluorescent beads attached to the keratinized epithelium (arrows), (n = 4/ each group).**

<https://doi.org/10.1371/journal.pone.0201330.g005>

In our investigation, we observed Si beads accumulating in the apical cytoplasm of some cells lining the sublingual ducts but not in the mandibular ducts. This observation is supported by a previous report concerning the role of the sublingual ductal system in incorporating and delivering sublingual antigens to ductal antigen-presenting cells [18]. In particular, in this previous report M cells were observed in the gastrointestinal mucosa and demonstrated the ability to take up antigen by phagocytosis [30, 31]. Interestingly, in our study we revealed that some cells within the epithelial lining of the sublingual duct could play a major role in the antigen uptake mechanism whereas some beads were phagocytosed into their apical cytoplasm and in turn we suggested that these cells might act as APCs or “M-like” cells. However, in previous studies some serum components such as albumin have been reported to migrate from capillaries to saliva via interstitial fluid [32, 33]. Despite the fact that the molecular weight of albumin (66 kDa) is greater than that of some allergens such as cedar pollen allergens (36 kDa), there have been no reports demonstrating that allergens migrate from saliva into blood. Therefore,

some other mechanism besides antigen uptake may be responsible for the effectiveness of SLIT. Further investigations are required.

Interestingly, a recent comparative study revealed that rodents and especially mice, could be used as animal models for pharmacodynamics/efficacy studies of SLIT [17]. Therefore, another goal of our investigation was to examine whether age and sex affect the efficacy of SLIT in mice, specifically. We found no remarkable difference in mucosal surface morphology between sexes. Interestingly, our data showed some variations in Lt bead accumulation between sexes, but none in Si bead accumulation. This is despite the fact that both types of beads were of equal size. Notably, in the Lt bead group, females tended to exhibit more fluorescence intensity at all observation sites, and significant sex differences were observed in the SC. However, such sex differences were not observed in the Si bead group. Variations between these groups may be due to the surface structure of the beads and their interaction or adhesion with mucous membranes. Additionally, the contents of saliva differ between male and female mice. This is attributable to the sexual dimorphism of intervening ducts in the mandibular gland [20]. Thus, we believe that variations in the oral environments of male and female mice could affect adhesion or uptake of beads into mucous membranes. In particular, the local environment of the female oral mucosa may contribute to the accumulation of latex beads.

In conclusion, our investigation revealed the major role of some sublingual ductal epithelial cells in the antigen uptake mechanism following SLIT. Furthermore, our data revealed possible sex-related differences in the efficacy of SLIT. Specifically, females demonstrated a greater tendency toward bead accumulation. We suggest that such differences are likely due to intrinsic differences between the two types of beads or other extrinsic differences such as variation of saliva content between the sexes or cyclic changes in the female. However, further investigations are required to examine the sexual differences for SLIT with protein molecules. Additionally, further examination for the effect of cyclic changes in female mice on the efficacy of SLIT would be helpful.

## Supporting information

**S1 Fig. Morphological observation of sublingual mucosa in mouse lower jaw following PBS or beads administration.** (a) Method of sublingual administration with a 20  $\mu$ L micropipette of either PBS or beads to the lower part of the mouse's tongue after raising the tongue. (b) Fluorescent stereomicroscopic image of the sublingual mucosa after cutting the anterior end of the tongue in the experimental group (latex beads, 3-month-old males). Notice fluorescently labelled bead accumulations in the sublingual caruncle (SC), buccal mucosa (BM), and oral rostral (OR) in front of the incisor teeth (IT) with no fluorescence detected in the negative control area (CA). (c) SEM image of the previous areas. (d) Fluorescent stereomicroscopic image of the sublingual mucosa in the control group. Notice the absence of fluorescent staining. Scale bar = 1 mm.

(TIF)

**S2 Fig. Fluorescent stereomicroscopic images of the sublingual mucosa 30 min after latex beads administration at different concentration: (a) 0.25%, (b) 0.5%, (c) 1%, (d) 2%.** Notice fluorescently labelled bead accumulations in the sublingual caruncle (SC), buccal mucosa (BM), and oral rostral (OR) were rarely observed at 0.25% concentration (a); faintly observed at 0.5% concentration (b); clearly observed at 1% concentration (c); and over fluorescence illumination at 1% concentration (d). Scale bars = 30  $\mu$ m.

(TIF)



**S3 Fig. Fluorescent stereomicroscopic images of time-dependent accumulation of fluorescently labelled beads in the sublingual caruncle (SC), buccal mucosa (BM), and oral rostral (OR) at (a, b) zero min; (c, d) 15 min; (e, f) 30 min; and (g, h) 60 min following administration of 1% latex beads to the lower part of the mouse's tongue.** Notice fluorescently labelled beads were rarely observed at zero min (a, b); and (g, h); faintly observed at 15 min (c, d) and 60 min (b); clearly observed at 30 (e, f) min 1% concentration; and over fluorescence illumination at 1% concentration (d). Scale bars = 100  $\mu\text{m}$  (a, c, e, g) and 40  $\mu\text{m}$  (b, d, f, h). (TIF)

## Author Contributions

**Conceptualization:** Tatsuya Mizoguchi, Osamu Ichii.

**Data curation:** Yaser Hosny Ali Elewa, Osamu Ichii, Teppei Nakamura, Yasuhiro Kon.

**Formal analysis:** Yaser Hosny Ali Elewa, Osamu Ichii.

**Funding acquisition:** Yaser Hosny Ali Elewa, Yasuhiro Kon.

**Investigation:** Tatsuya Mizoguchi, Osamu Ichii.

**Methodology:** Yaser Hosny Ali Elewa, Tatsuya Mizoguchi, Osamu Ichii.

**Project administration:** Yasuhiro Kon.

**Resources:** Yasuhiro Kon.

**Supervision:** Osamu Ichii, Yasuhiro Kon.

**Validation:** Osamu Ichii, Teppei Nakamura, Yasuhiro Kon.

**Visualization:** Yaser Hosny Ali Elewa, Osamu Ichii, Teppei Nakamura, Yasuhiro Kon.

**Writing – original draft:** Yaser Hosny Ali Elewa.

**Writing – review & editing:** Yaser Hosny Ali Elewa, Osamu Ichii, Teppei Nakamura, Yasuhiro Kon.

## References

1. Sakurai Y, Nakamura K., Teruya K, Shimada N, Umeda T, Tanaka H, et al. Prevalence and risk factors of allergic rhinitis and cedar pollinosis among Japanese men. *Prev Med.* 1998; 27: 617–622. <https://doi.org/10.1006/pmed.1998.0336> PMID: 9672957
2. Nødtvedt A, Egenvall A, Bergvall K, Hedhammar A. Incidence of and risk factors for atopic dermatitis in a Swedish population of insured dogs. *Vet Rec.* 2006; 159: 241–246. <http://dx.doi.org/10.1136/vr.159.8.241> PMID: 16921013
3. Diesel A. Cutaneous hypersensitivity dermatoses in the feline patient: a review of allergic skin disease in cats. *Vet Sci.* 2017; 4: 25. <http://doi.org/10.3390/vetsci4020025> PMID: 29056684
4. Greenberger PA. Use of immunotherapy for allergic disorders: diagnostic considerations and indications. *Immunol. Allergy Clin. North Am.* 1992; 12: 1–12.
5. Townley RG, Suliaman F. The mechanism of corticosteroids in treating asthma. *Ann Allergy.* 1987; 58: 1–6. PMID: 3026210
6. Ciprandi G, Tosca M, Passalacqua G, Canonica GW, Ricca V, Landi M. Continuous antihistamine treatment controls allergic inflammation and reduces respiratory morbidity in children with mite allergy. *Allergy.* 1999; 54: 358–365. <https://doi.org/10.1034/j.1398-9995.1999.00920.x> PMID: 10371095
7. Dahl R, Kapp A, Colombo G, Monchy JGR, Rak S, Emminger W, et al. Sublingual grass allergen tablet immunotherapy provides sustained clinical benefit with progressive immunological changes over 2 years. *J Allergy Clin. Immunol.* 2008; 121: 512–518. <https://doi.org/10.1016/j.jaci.2007.10.039> PMID: 18155284



8. Ott H, Sieber J, Brehler R, Fölster-Holst R, Kapp A, Klimek L, et al. Efficacy of grass pollen sublingual immunotherapy for three consecutive seasons and after cessation of treatment: the ECRIT study. *Allergy*. 2009; 64: 1394–1401. <https://doi.org/10.1111/j.1398-9995.2008.01875.x> PMID: 19764942
9. Zhong C, Yang W, Li Y, Zou L, Deng Z, Liu M, and Huang X. Clinical evaluation for sublingual immunotherapy with *Dermatophagoides farinae* drops in adult patients with allergic asthma. *Ir. J. Med. Sci.* 2017; 1–6. <http://doi.org/10.1007/s11845-017-1685-x>. PMID: 29032417
10. Jay DC, and Nadeau KC. Immune mechanisms of sublingual immunotherapy. *Curr. Allergy Asthma Rep.* 2014; 14: 473. <http://doi.org/10.1007/s11882-014-0473-1> PMID: 25195100
11. Zielen S, Devillier P, Heinrich J, Richter H, Wahn U. Sublingual immunotherapy provides long-term relief in allergic rhinitis and reduces the risk of asthma: a retrospective, real-world database analysis. *Allergy*. 2018; 73: 165–177. <http://doi.org/10.1111/all.13213> PMID: 28561266
12. DeBoer DJ, Verbrugge M, Morris M. Clinical and immunological responses of dust mite sensitive, atopic dogs to treatment with sublingual immunotherapy (SLIT). *Vet. Dermatol.* 2016; 27: 82–e24. <http://doi.org/10.1111/vde.12284> PMID: 26749020
13. Hovav A-H. Dendritic cells of the oral mucosa. *Mucosal Immunol.* 2014; 7: 27–37. <http://doi.org/10.1038/mi.2013.42> PMID: 23757304
14. Mascarell L, Lombardi V, Louise A, Saint-Lu N, Chabre H, Moussu H, et al. Oral dendritic cells mediate antigen-specific tolerance by stimulating TH1 and regulatory CD4+ T cells. *J Allergy Clin Immunol.* 2008; 122: 603–609. <https://doi.org/10.1016/j.jaci.2008.06.034> PMID: 18774396
15. Mascarell L, Rak S, Worm M, Melac M, Soulie S, Lescaille G, et al. Characterization of oral immune cells in birch pollen-allergic patients: impact of the oral allergy syndrome and sublingual allergen immunotherapy on antigen-presenting cells. *Allergy*. 2015; 70: 408–419. <http://doi.org/10.1111/all.12576> PMID: 25631199
16. Zhang C, Ohno T, Kang S, Takai T, Azuma M. Repeated antigen painting and sublingual immunotherapy in mice convert sublingual dendritic cell subsets. *Vaccine*. 2014; 32: 5669–5676. <http://doi.org/10.1016/j.vaccine.2014.08.013> PMID: 25168308
17. Thirion-Delalande C, Gervais F, Fisch C, Cuine J, Baron-Bodo V, Moingeon P, et al. Comparative analysis of the oral mucosae from rodents and non-rodents: application to the nonclinical evaluation of sublingual immunotherapy products. *PLoS ONE*. 2017; 12 (9): e0183398. <https://doi.org/10.1371/journal.pone.0183398> PMID: 28886055
18. Nagai Y, Shiraishi D, Tanaka Y, Nagasawa Y, Ohwada S, Aso H, et al. Transportation of sublingual antigens across sublingual ductal epithelial cells to the ductal antigen-presenting cells in mice. *Clin. Exper. Allergy*. 2014; 45: 677–686. <http://doi.org/10.1111/cea.12329> PMID: 24773115
19. Brook I. The bacteriology of salivary gland infections. *Oral Maxillofac. Surg. Clin. North Am.* 2009; 21: 269–274. <http://doi.org/10.1016/j.coms.2009.05.001> PMID: 19608044
20. Amano O, Mizobe K, Bando Y, Sakiyama K. Anatomy and histology of rodent and human major salivary glands. *Acta Histochem. Cytochem.* 2012; 45: 241–250. <http://doi.org/10.1267/ahc.12013> PMID: 23209333
21. Nagler RM. Salivary glands and the aging process: mechanistic aspects, health-status and medicinal-efficacy monitoring. *Biogerontology*. 2004; 5: 223–233. <http://doi.org/10.1023/B:BGEN.0000038023.36727.50> PMID: 15314272
22. Wilson DR, Torres LI, Durham SR. Sublingual immunotherapy for allergic rhinitis. *Cochrane Database Syst. Rev.* 2003. CD002893. <http://doi.org/10.1002/14651858>
23. Pajno GB, Peroni DG, Vita D, Pietrobelli A, Parmiani S, Boner AL. Safety of sublingual immunotherapy in children with asthma. *Paediatr. Drugs*. 2003; 5: 777–781. <https://doi.org/10.2165/00148581-200305110-00006> PMID: 14580226
24. Passalacqua G, Guerra L, Pasquali M, Lombardi C, Canonica GW. Efficacy and safety of sublingual immunotherapy. *Ann. Allergy Asthma Immunol.* 2004; 93: 3–12. [http://doi.org/10.1016/S1081-1206\(10\)61440-8](http://doi.org/10.1016/S1081-1206(10)61440-8) PMID: 15281466
25. Penagos M, Compalati E, Tarantini F, Baena-Cagnani R, Huerta J, Passalacqua G, et al. Efficacy of sublingual immunotherapy in the treatment of allergic rhinitis in pediatric patients 3 to 18 years of age: a meta-analysis of randomized, placebo-controlled, double-blind trials. *Ann. Allergy Asthma Immunol.* 2006. 97: 141–148. [http://doi.org/10.1016/S1081-1206\(10\)60004-X](http://doi.org/10.1016/S1081-1206(10)60004-X) PMID: 16937742
26. Mascarell L, Van Overtvelt L, Moingeon P. Novel ways for immune intervention in immunotherapy: mucosal allergy vaccines. *Immunol. Allergy Clin. North Am.* 2006; 26: 283–306, vii–viii. <http://doi.org/10.1016/j.iac.2006.02.009> PMID: 16701145
27. Dahl R, Kapp A, Colombo G, de Monchy JG, Rak S, Emminger W, et al. Efficacy and safety of sublingual immunotherapy with grass allergen tablets for seasonal allergic rhinoconjunctivitis. *J. Allergy Clin. Immunol.* 2006; 118: 434–440. <http://doi.org/10.1016/j.jaci.2006.05.003> PMID: 16890769

28. Didier A, Malling HJ, Worm M, Horak F, Jager S, Montagut A, et al. Optimal dose, efficacy, and safety of once-daily sublingual immunotherapy with a 5-grass pollen tablet for seasonal allergic rhinitis. *J. Allergy Clin. Immunol.* 2007; 120: 1338–1345. <http://doi.org/10.1016/j.jaci.2007.07.046> PMID: 17935764
29. Marsella R. Tolerability and clinical efficacy of oral immunotherapy with house dust mites in a model of canine atopic dermatitis: a pilot study. *Vet. Dermatol.* 2010; 21: 566–571. <http://doi.org/10.1111/j.1365-3164.2010.00890.x>. PMID: 20492623
30. Hase K, Ohno H. Epithelial cells as sentinels in mucosal immune barrier. *Clin. Immunol.* 2006; 29: 16–26. <http://doi.org/10.2177/jsci.29.16> PMID: 16505599
31. Kimura S. Molecular insights into the mechanisms of M-cell differentiation and transcytosis in the mucosa-associated lymphoid tissues. *Anat. Sci. Int.* 2017; 1–12. <http://doi.org/10.1007/s12565-017-0418-6> PMID: 29098649
32. Vining FV, McGinley RA, Symons RG. Hormones in saliva: mode of entry and consequent implications for clinical interpretation. *Clin. Chem.* 1983; 29: 1752–1756. PMID: 6225566
33. Pfaffe T, Cooper-White J, Beyerlein P, Kostner K, Punyadeera C. Diagnostic potential of saliva: current state and future applications. *Clin. Chem.* 2011; 57: 675–687. <http://doi.org/10.1373/clinchem.2010.153767> PMID: 21383043