



Rangelands Initiative Africa

Ken Otieno-Technical Coordinator-Rangelands Initiative Africa

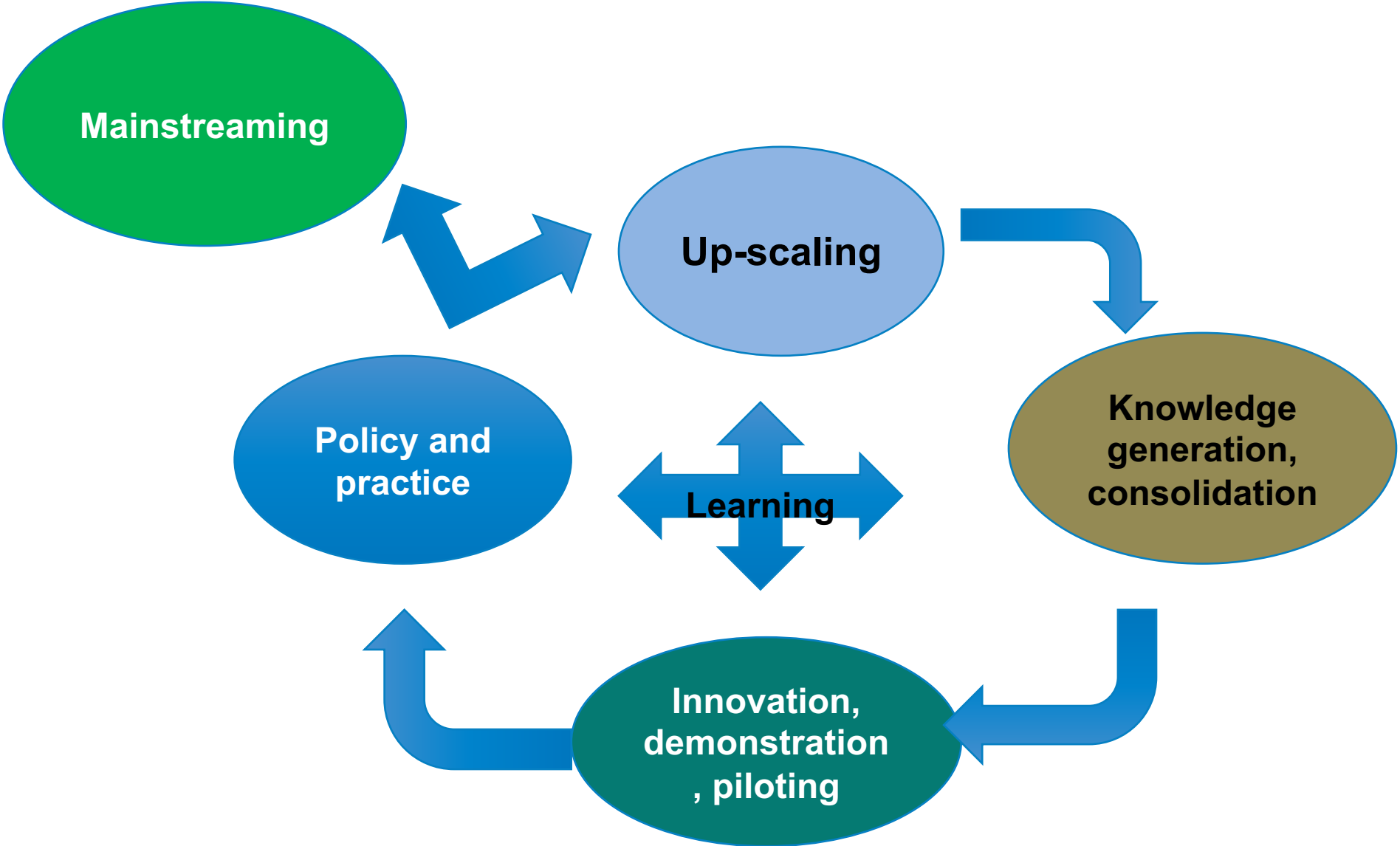
**Sharing and Learning
Rangelands Retreat in Jakarta
September 21st, 2018**

AFRICA REGION

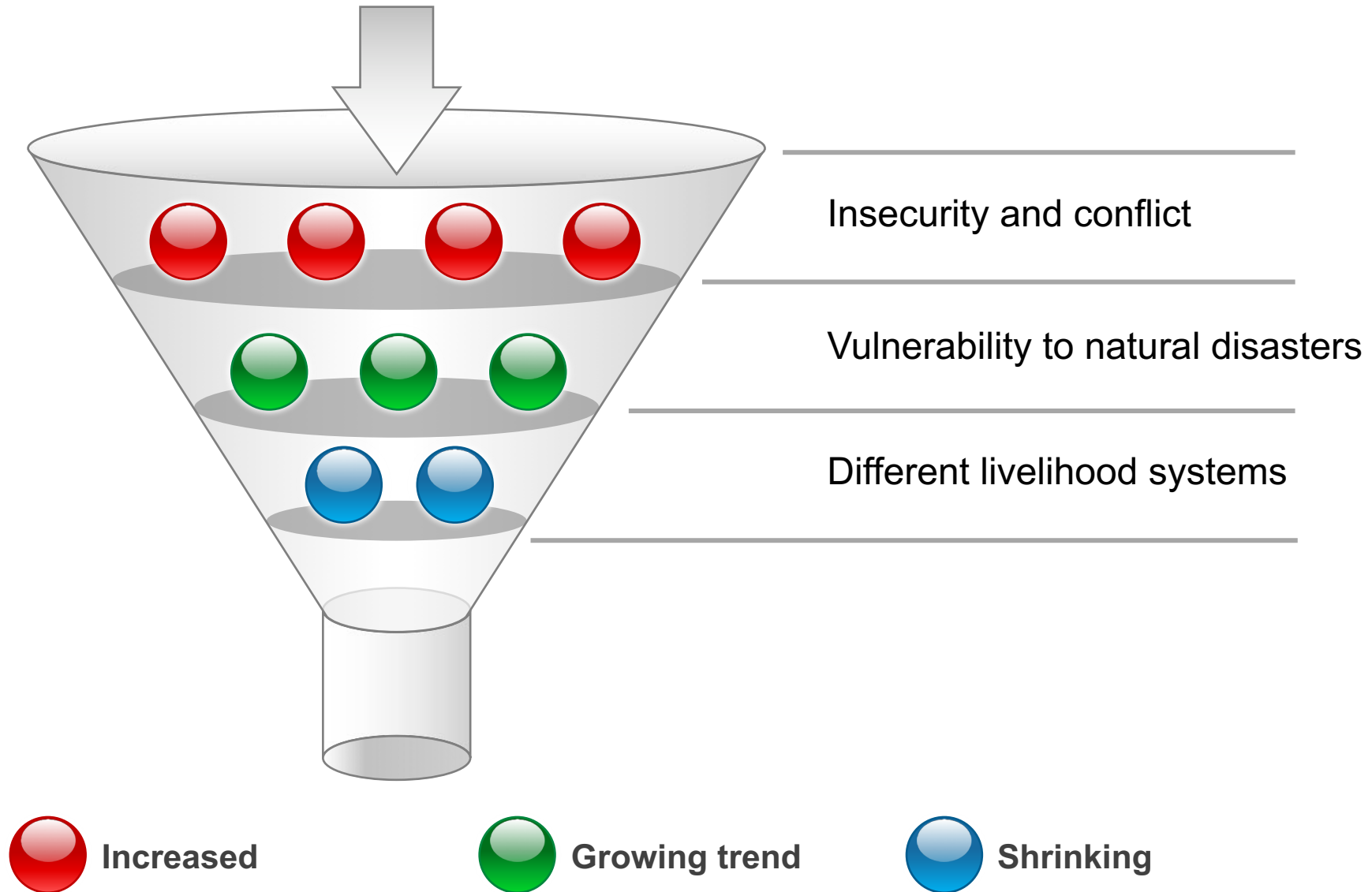


- CURRENT MEMBERS ACTIVELY ENGAGING**
- RECONCILE-Kenya
 - MBOSCUDA-Cameroon
 - ILRI-Kenya and Ethiopia
 - TNRF-Tanzania
 - UCRT-Tanzania
 - COMISUD-Cameroon
 - RBM-West Africa Region
 - CICODEV-Senegal
 - PAICODEO-Tanzania
 - TALA/NES TZ-Tanzania
 - CED-Cameroon
 - IPAR-Senegal
 - GLTN/UNHABITA-Kenya
 - CORET-Nigeria
 - CIRAD
 - VSF-B/CELEP
 - IFAD-Sudan
 - IFAD-Nigeria
 - IFAD-Tanzania
 - PROCASUR

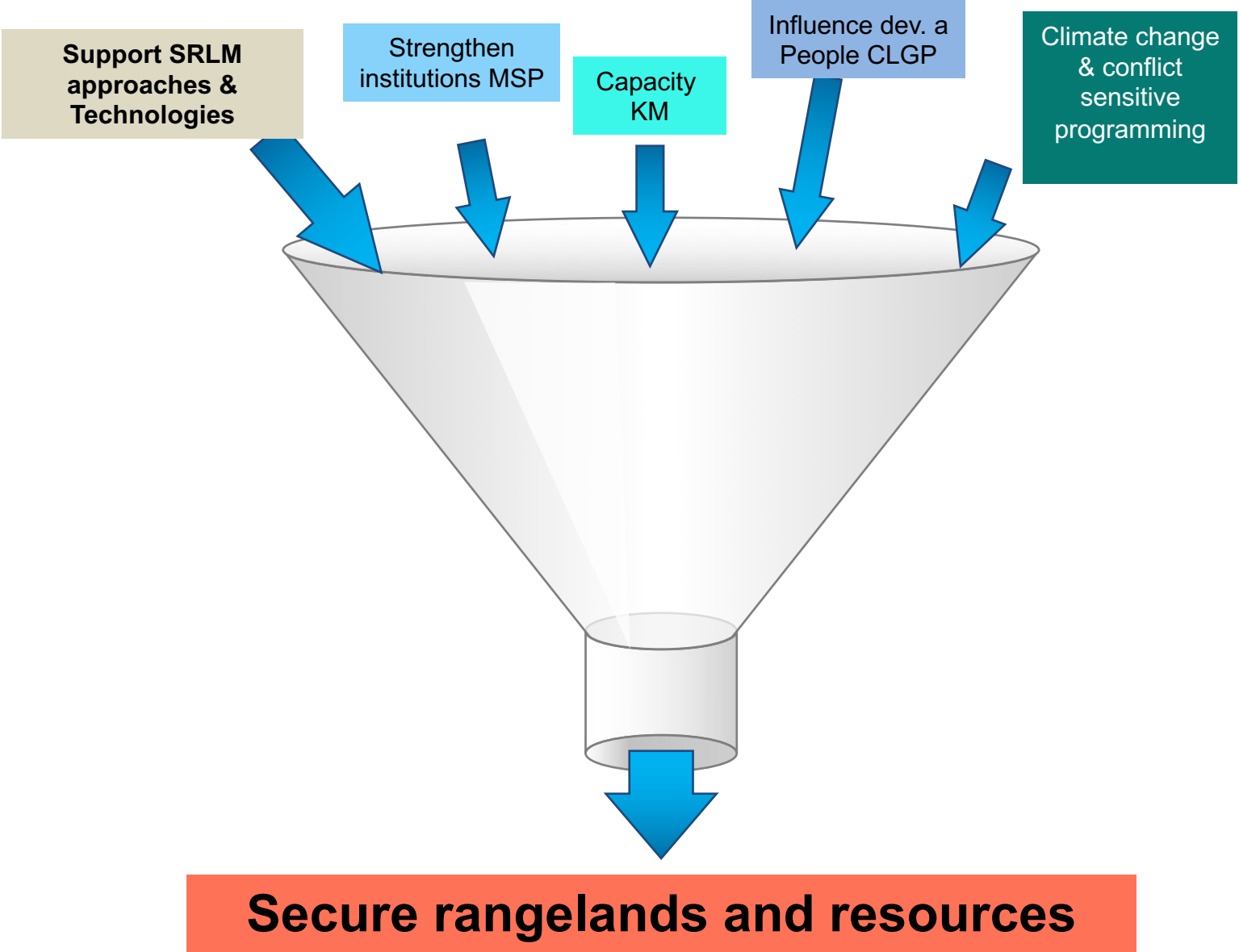
CYCLE OF ENGAGEMENT AND SUPPORT



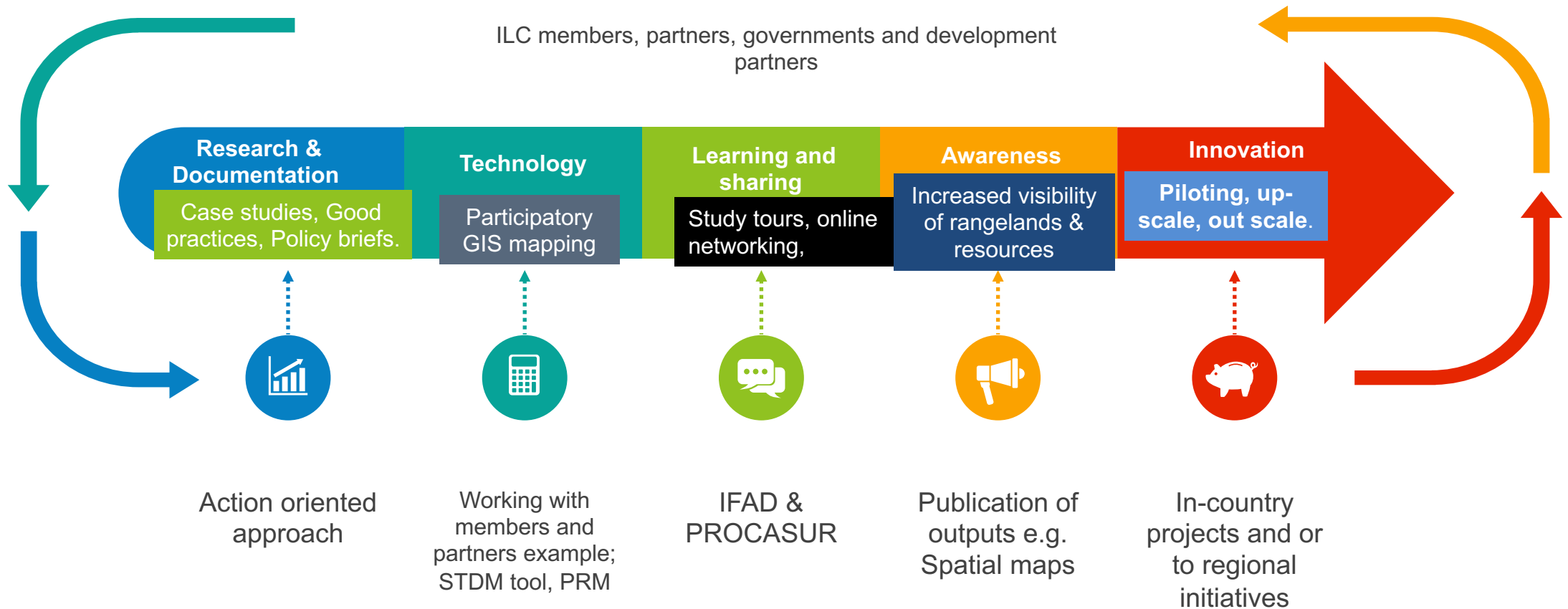
OPERATING CONTEXT



INTERVENTIONS BY MEMBERS AND PARTNERS



STEPS TOWARDS SECURE RANGELANDS



RI APPROACHES SECURING RANGELANDS

Provides Technical Support

Tools and guides for sustainable rangelands management

Knowledge Management
Studies, lesson learning, documentation



Facilitates and creates spaces for members & partners

Learn, share, influence



Joint actions
Joint planning by members in the region



SUCCESS REGISTERED

- In Ethiopia – PLUP in rangelands manual production with ILRI, Oxfam, Farm Africa & SOS (customary LUP case studies)
- Enabling the mainstreaming of PRM in resilience projects; livestock corridor proposal (Min Livestock);
- In Kenya – Community land law as an opportunity towards piloting of land use planning
- Embedding rangelands in the National Engagement Strategy in Tanzania, Kenya, Cameroon
- Piloting of participatory rangelands planning in Baringo
- Livestock corridors; McGill I-CAN-Project with ACC
- Land use planning processes

LEARNINGS AND SHARING



Learning from local framework

The group ranch model in Kenya



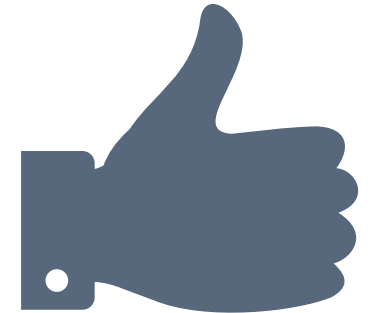
Joint village LUP process Tanzania

Partner-based level of learning

Regional and inter-regional learning

Institution-based level of learning

Community based initiatives



Participatory Rangelands Management Ethiopia

While still grounded in the concrete practices of rangelands users, this level of learning includes documents elaborated by research institutions and civil society organisations, meant to influence the decisions of practitioners, policy-makers and policy-implementers

Alliance farming for instance in Cameroon enables Semi-nomadic pastoralist communities pastoralists to use innovative livelihood strategies in order to adapt to climate change and reduce conflict

Resource Trend and Mobilization



Future resource project

Flagship projects e.g. PRM EC

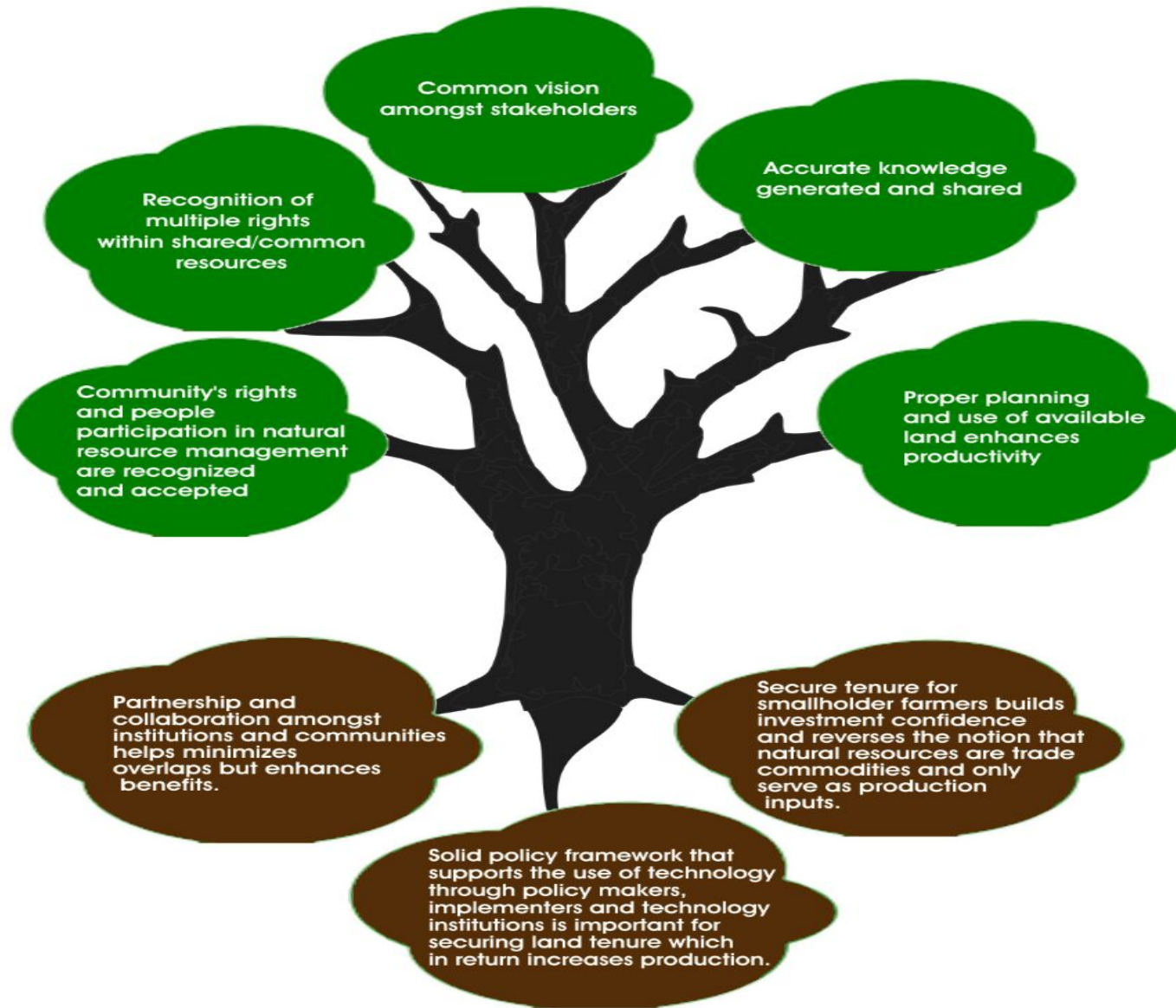
Pilots and Innovation IFAD, UNHABITAT

Core action and resources by ILC





LESSONS



- Partnership amongst farmers and pastoralists
- Policy and legal systems that is facilitative and not prescriptive
- Tenure security for the smallholder farmers land and grazing areas for pastoralists

THANK YOU!