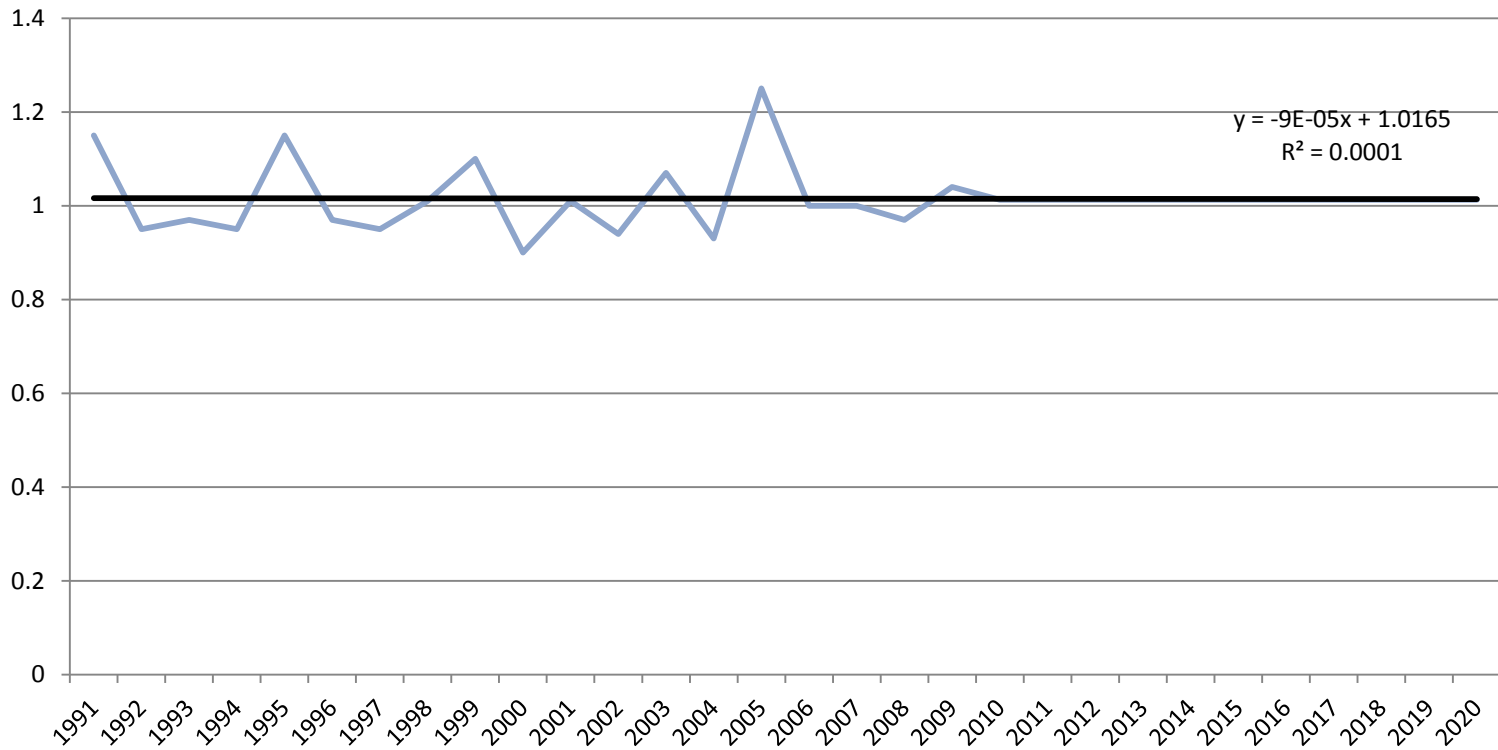


Bean yield growth trends and projects in PABRA selected Countries (1991-2020)

By
Enid Katungi

bean yield growth trend						
	Rwanda	Kenya	Burundi	Ethiopia	Tanzania	
1991	1.15	0.79	0.86	1.77		
1992	0.81	1.15	1.02	0.66		0.99
1993	0.99	0.85	0.93	0.61		1
1994	1.13	0.66	0.86	0.47		0.99
1995	0.91	1.21	1.19	1.4		1.07
1996	1	0.6	0.95			1.03
1997	0.8	1	0.97	0.86		0.95
1998	1.17	1.23	1.01	0.84		1.05
1999	0.94	1.23	0.97	0.86		1.03
2000	1.05	0.91	0.9	1		0.96
2001	1.09	0.89	1.12	0.93		1.17
2002	0.98	1.36	0.91	0.78		0.51
2003	0.97	0.92	1.08	1.32		1.57
2004	0.92	0.74	0.94	1.13		1.19
2005	1.03	1.05	0.99	0.91		0.88
2006	1.25	1.45	1	1.27		1.04
2007	1.16	0.95	1	1.18		1.05
2008	1	0.81	0.97	1.05		0.97
2009	1.03	1.17	1.05	1.12		1.04
2010	1.068	1.08	1.012	1.068		1.04
2011	1.073	1.089	1.015	1.063		1.042
2012	1.078	1.098	1.018	1.058		1.044
2013	1.083	1.107	1.021	1.053		1.046
2014	1.088	1.116	1.024	1.048		1.048
2015	1.093	1.125	1.027	1.043		1.05
2016	1.098	1.134	1.03	1.038		1.052
2017	1.103	1.143	1.033	1.033		1.054
2018	1.108	1.152	1.036	1.028		1.056
2019	1.113	1.161	1.039	1.023		1.058
2020	1.118	1.17	1.042	1.018		1.06

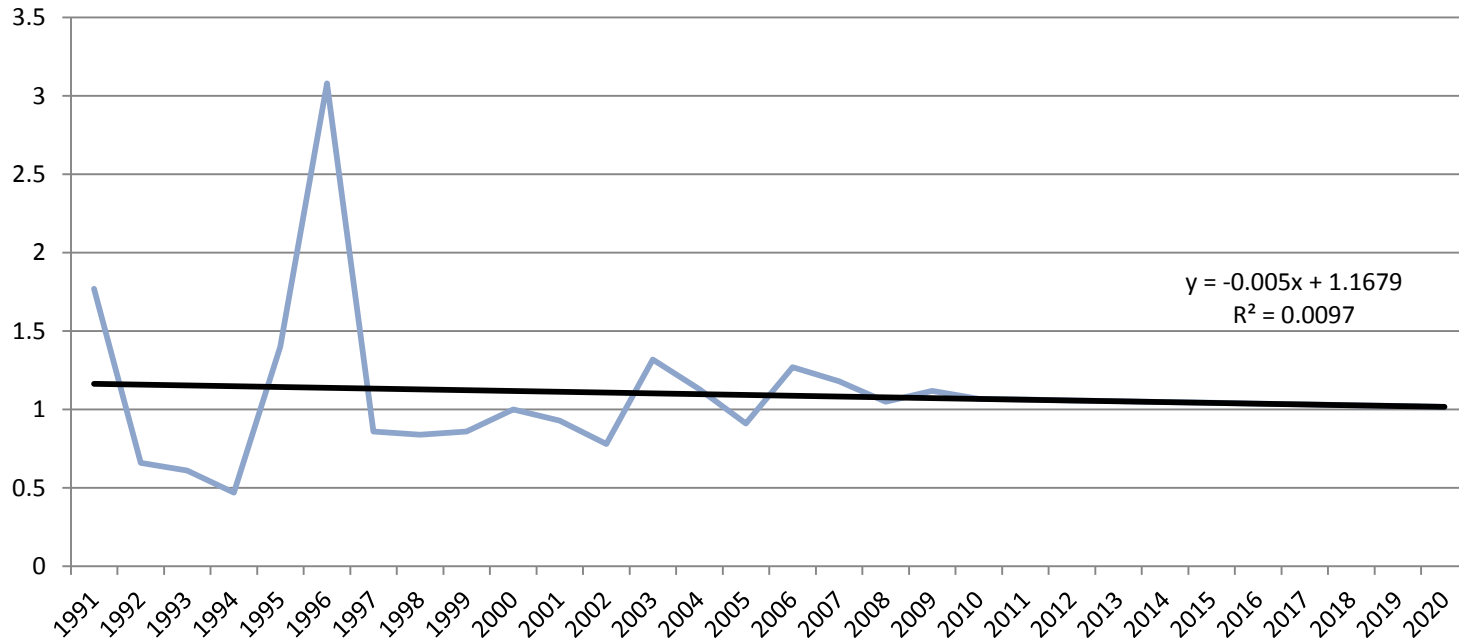
Madagascar



Yield = 1.1ton/ha

Area= 90,666ha

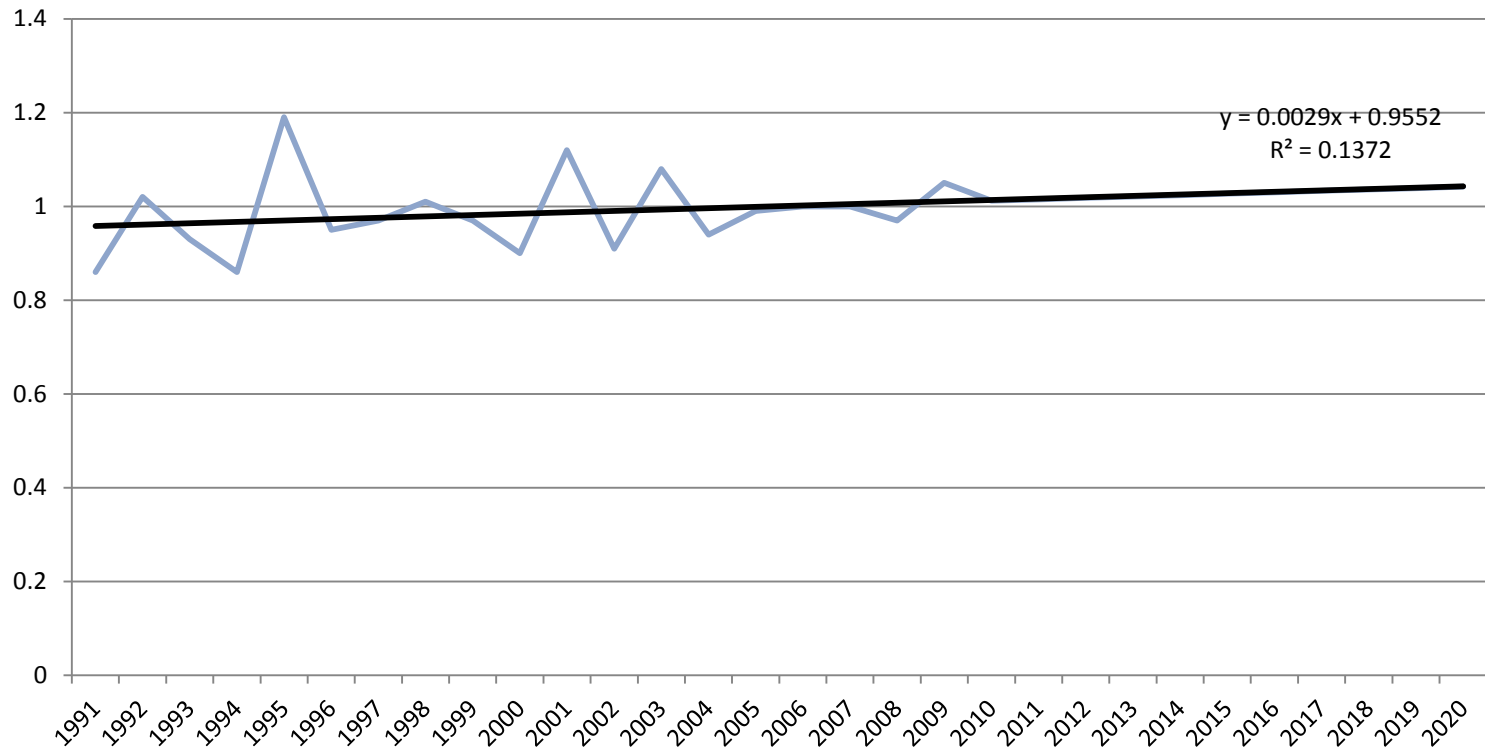
Ethiopia



Yield= 1.2ton/ha

Area = 231,433 ha

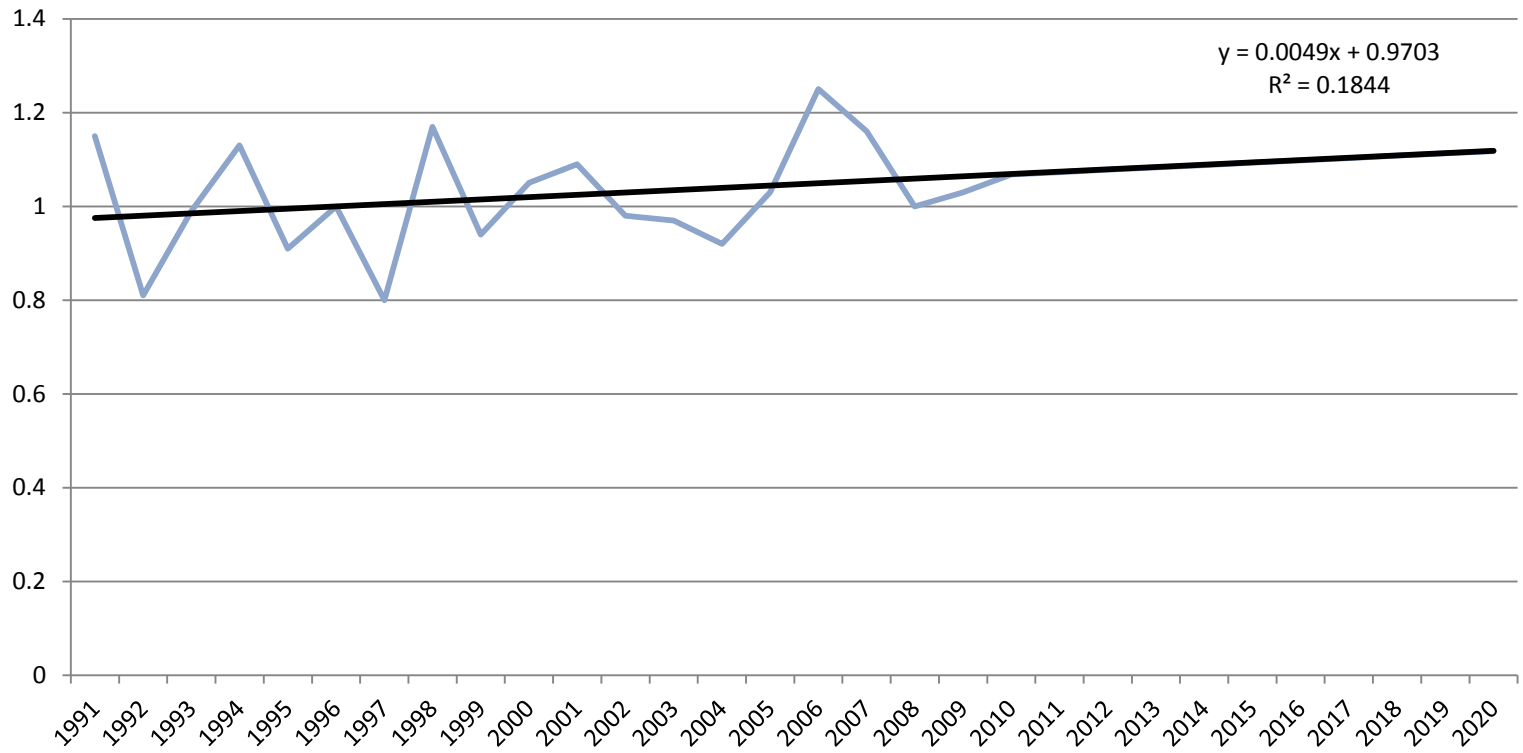
Burundi



Yield= 0.92kg/ha

Area = 220,000ha

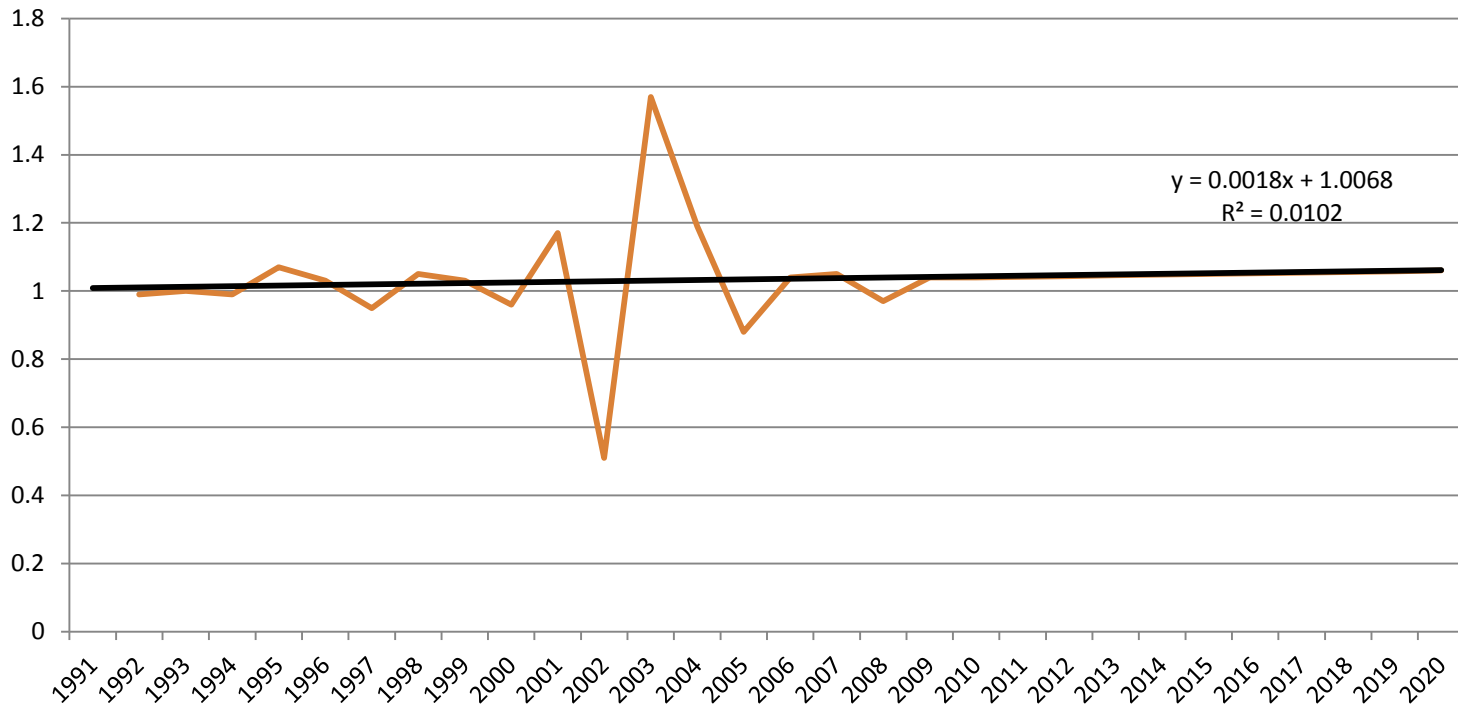
Rwanda



Yield=0.94/ha

Area= 336,577 ha

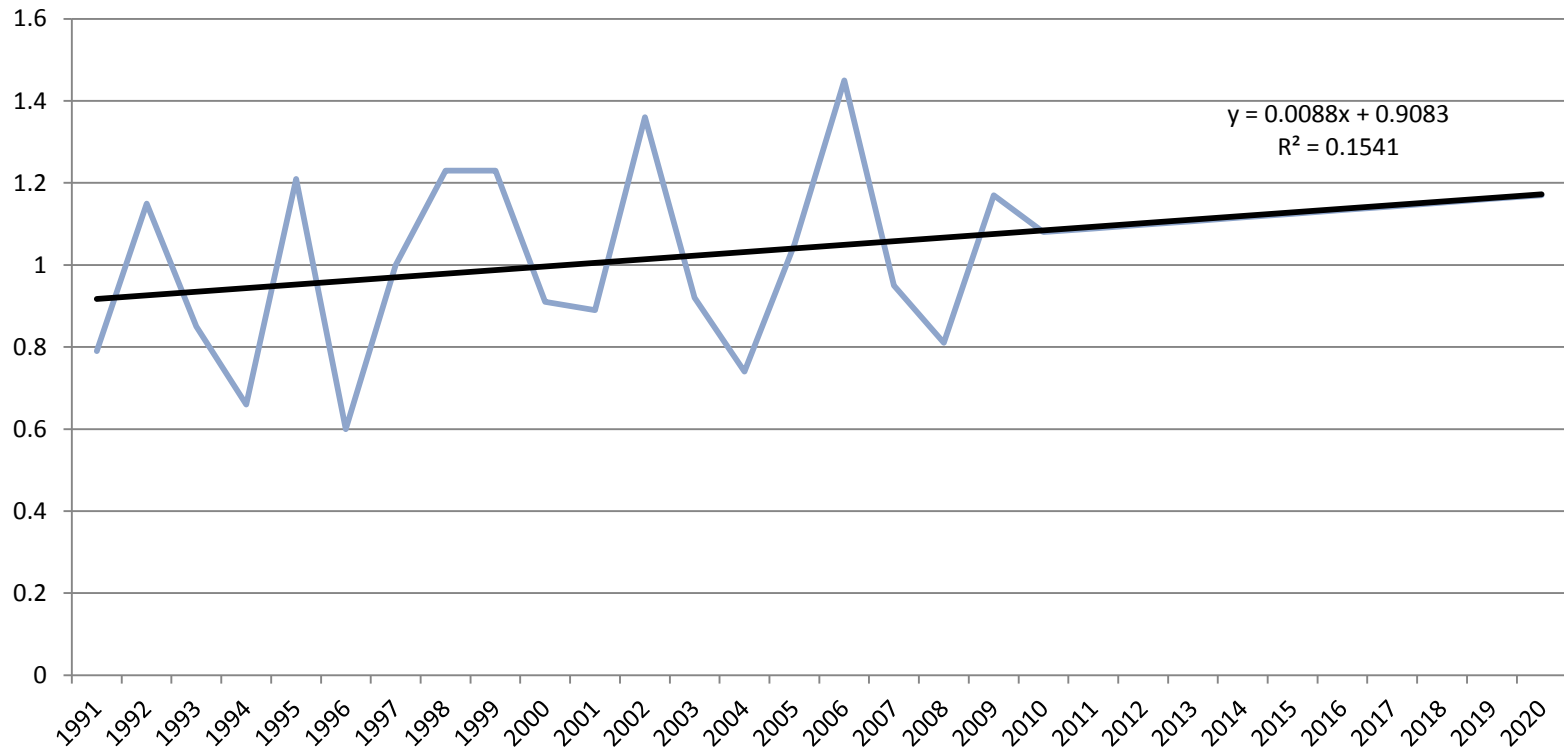
Tanzania



Yield=0.74ton/ha

Area= 1,266,870ha

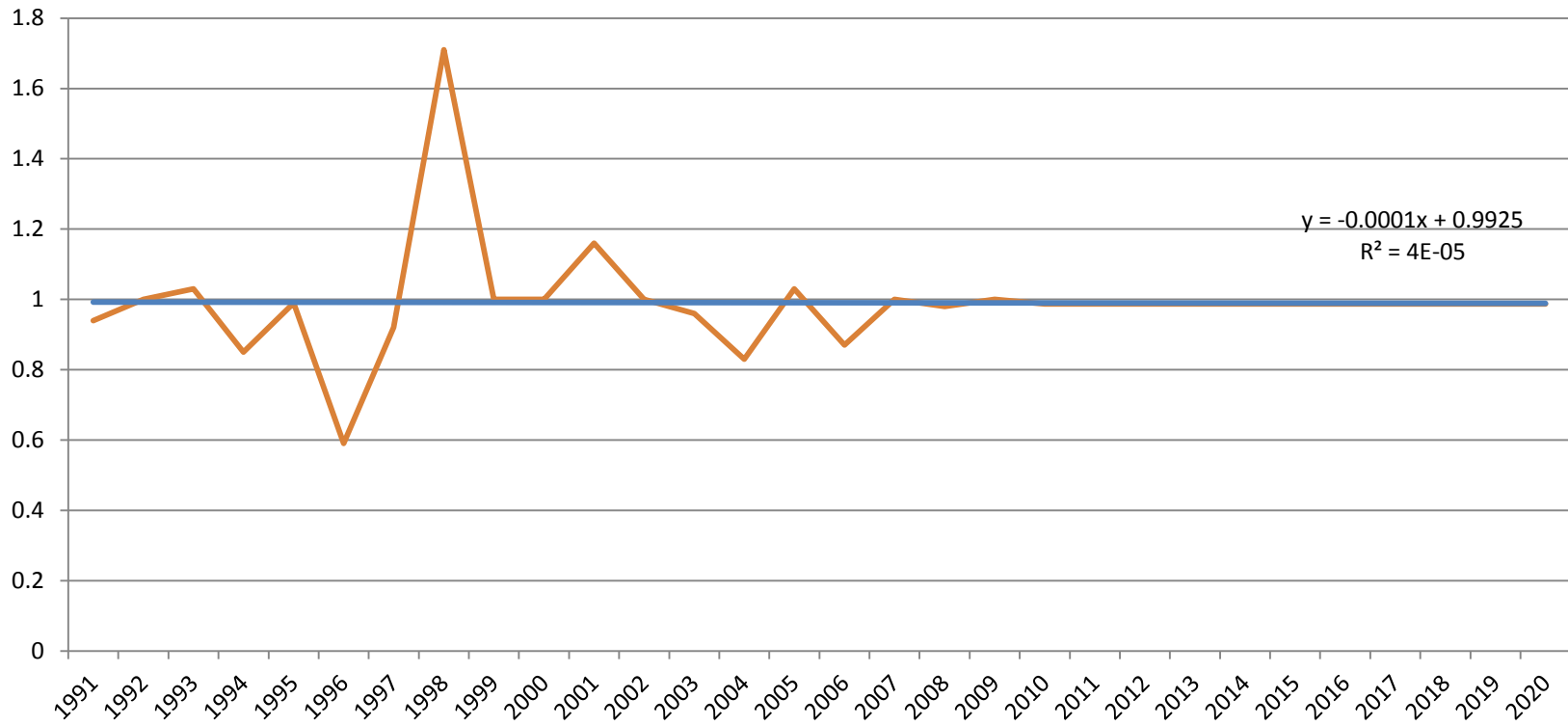
Kenya



Yield= 0.48ton/ha

Area= 960,705ha

Uganda



Yield = 0.49ton/ha

Area= 960,705ha

Thank you