

## CASE STUDY

# A spatially explicit life cycle inventory of the global textile chain

Julia K. Steinberger · Damien Friot · Olivier Jolliet · Suren Erkman

Received: 19 June 2008 / Accepted: 29 March 2009 / Published online: 13 May 2009  
© Springer-Verlag 2009

## Abstract

*Background, aim, and scope* Life cycle analyses (LCA) approaches require adaptation to reflect the increasing delocalization of production to emerging countries. This work addresses this challenge by establishing a country-level, spatially explicit life cycle inventory (LCI). This study comprises three separate dimensions. The first dimension is spatial: processes and emissions are allocated to the country in which they take place and modeled to take into account local factors. Emerging economies China and India are the location of production, the consumption occurs in Germany, an Organisation for

Economic Cooperation and Development country. The second dimension is the product level: we consider two distinct textile garments, a cotton T-shirt and a polyester jacket, in order to highlight potential differences in the production and use phases. The third dimension is the inventory composition: we track CO<sub>2</sub>, SO<sub>2</sub>, NO<sub>x</sub>, and particulates, four major atmospheric pollutants, as well as energy use. This third dimension enriches the analysis of the spatial differentiation (first dimension) and distinct products (second dimension).

*Materials and methods* We describe the textile production and use processes and define a functional unit for a garment. We then model important processes using a hierarchy of preferential data sources. We place special emphasis on the modeling of the principal local energy processes: electricity and transport in emerging countries.

*Results* The spatially explicit inventory is disaggregated by country of location of the emissions and analyzed according to the dimensions of the study: location, product, and pollutant. The inventory shows striking differences between the two products considered as well as between the different pollutants considered. For the T-shirt, over 70% of the energy use and CO<sub>2</sub> emissions occur in the consuming country, whereas for the jacket, more than 70% occur in the producing country. This reversal of proportions is due to differences in the use phase of the garments. For SO<sub>2</sub>, in contrast, over two thirds of the emissions occur in the country of production for both T-shirt and jacket. The difference in emission patterns between CO<sub>2</sub> and SO<sub>2</sub> is due to local electricity processes, justifying our emphasis on local energy infrastructure.

*Discussion* The complexity of considering differences in location, product, and pollutant is rewarded by a much richer understanding of a global production–consumption

**Electronic supplementary material** The online version of this article (doi:10.1007/s11367-009-0078-4) contains supplementary material, which is available to authorized users.

J. K. Steinberger · S. Erkman  
IPTEH, Faculty of Geosciences and Environment,  
University of Lausanne,  
Amphipôle, UNIL-Sorge,  
CH-1015 Lausanne, Switzerland

D. Friot  
Laboratory of Applied Economics, University of Geneva,  
Uni-Mail, 40 Boulevard du Pont d'Arve,  
1211 Geneva 4, Switzerland

O. Jolliet  
Environmental Health Sciences, School of Public Health,  
University of Michigan,  
109 South Observatory,  
Ann Arbor, MI 48109, USA

J. K. Steinberger (✉)  
Institute of Social Ecology, Faculty for Interdisciplinary Studies,  
University of Klagenfurt,  
Schottenfeldgasse 29,  
1070 Vienna, Austria  
e-mail: julias@alum.mit.edu

chain. The inclusion of two different products in the LCI highlights the importance of the definition of a product's functional unit in the analysis and implications of results. Several use-phase scenarios demonstrate the importance of consumer behavior over equipment efficiency. The spatial emission patterns of the different pollutants allow us to understand the role of various energy infrastructure elements. The emission patterns furthermore inform the debate on the Environmental Kuznets Curve, which applies only to pollutants which can be easily filtered and does not take into account the effects of production displacement. We also discuss the appropriateness and limitations of applying the LCA methodology in a global context, especially in developing countries.

**Conclusions** Our spatial LCI method yields important insights in the quantity and pattern of emissions due to different product life cycle stages, dependent on the local technology, emphasizing the importance of consumer behavior. From a life cycle perspective, consumer education promoting air-drying and cool washing is more important than efficient appliances.

**Recommendations and perspectives** Spatial LCI with country-specific data is a promising method, necessary for the challenges of globalized production–consumption chains. We recommend inventory reporting of final energy forms, such as electricity, and modular LCA databases, which would allow the easy modification of underlying energy infrastructure.

**Keywords** Atmospheric emissions · Carbon dioxide · China · Electricity · Energy · Environmental Kuznets Curve · India · Infrastructure · Nitrogen oxides · Particulates · Spatial LCI · Sulfur dioxide · Textile · Transport

## 1 Introduction

Life Cycle Analysis (LCA) of a product can serve as a guide to decision-making, identifying key processes and environmentally preferable alternatives. A full-product life cycle allows the answer to the question: should the environmental focus be on the production phase (cleaner production) or at the consumption phase (cleaner consumption)? In this work, we create a life cycle inventory (LCI) of the globalized textile chain, disaggregated along three separate dimensions: (1) spatially explicit at the country level, (2) applied to two distinct products, and (3) encompassing four major atmospheric pollutants and energy use. The three dimensions inform and enrich the analysis, enabling us to address the issues of cleaner production and consumption from different perspectives, with different answers depending on the product and the pollutant considered.

### 1.1 The textile sector in global trade

LCA approaches require adaptation to reflect the increasing delocalization of manufacturing in emerging countries. This work addresses this need by establishing a spatially explicit LCI. Our goal is to analyze the spatial pattern of pollutant emissions and illustrate the potential displacement of pollution in a globalized economy. For our case study, we choose the production and use of two representative products of the globalized textile industry: a cotton T-shirt from India and a polyester jacket from China, both consumed in Germany. The producing countries are representative of the global textile production chains, which have been expanding and changing in composition, moving to developing and emerging countries on the textile production and processing side, as well as shifting from natural to synthetic fibers (Baffes 2004). Although previous life cycle analyses of textile products have been performed (Jödicke 2001; Pulli 1997), they often do not take into account the global nature of the production–consumption chain or the entirety of the production–consumption processes (Dahllöf 2004)

### 1.2 The Tracking Environmental Impacts of Consumption project

This work is part of the “Tracking Environmental Impacts of Consumption” (TREI-C) research project ([www.trei-c.org](http://www.trei-c.org)). The goal of TREI-C is the development of tools to assess the environmental impacts of globalized production and consumption through one detailed product life cycle assessment and more encompassing Multi-Region Input-Output modeling. A third component maps the location of emissions and impacts depending on global transfers of atmospheric pollutants and appropriate local impact factors.

Within the TREI-C project, the textile case study serves to highlight the complexity of following a production consumption chain in detail, compared to the more aggregate and comprehensive Input–Output approach. It also serves as the basis for calculations of spatially explicit country-level impact factors along a production–consumption chain. Indeed, human health impact factors are higher in China and India, due to higher population densities than in Europe or the USA, so the same quantity of emissions will have more important health consequences. This is to be added to the health vulnerability resulting from lack of public health infrastructure.

In accordance with the ultimate goals of the TREI-C project—the quantification of trade exchanges of embodied pollutants and their parallel atmospheric transport—the LCI focuses on atmospheric emissions of four common pollutants (CO<sub>2</sub>, SO<sub>2</sub>, NO<sub>x</sub>, particulates). These pollutants are of significant environmental and human health relevance: CO<sub>2</sub>

is the primary contributor to anthropogenic global warming, NO<sub>x</sub> and SO<sub>2</sub> are acidifying and have already been targeted through environmental policies in Europe and the USA, and particulates cause or aggravate respiratory diseases. They are also chosen because of their data availability and because they are emitted in conjunction with fossil energy use, which arises in most industrial processes, as opposed to other pollutants, whose emission inventories are lacking or related to very specific industrial processes. Despite the inventory focus on specific atmospheric emissions, sources of aquatic pollution are also surveyed.

In the frame of this project, the present paper specifically aims to:

- Develop a hierarchical strategy for establishing the life cycle inventory of products from developing countries
- Model processes and allocate emissions in a spatially explicit manner, at the country level
- Determine the respective share of emissions and energy needs for two types of garments produced in developing countries and consumed in developed countries
- Discuss the appropriateness and limitations of applying the LCA methodology in a global context, especially in developing countries

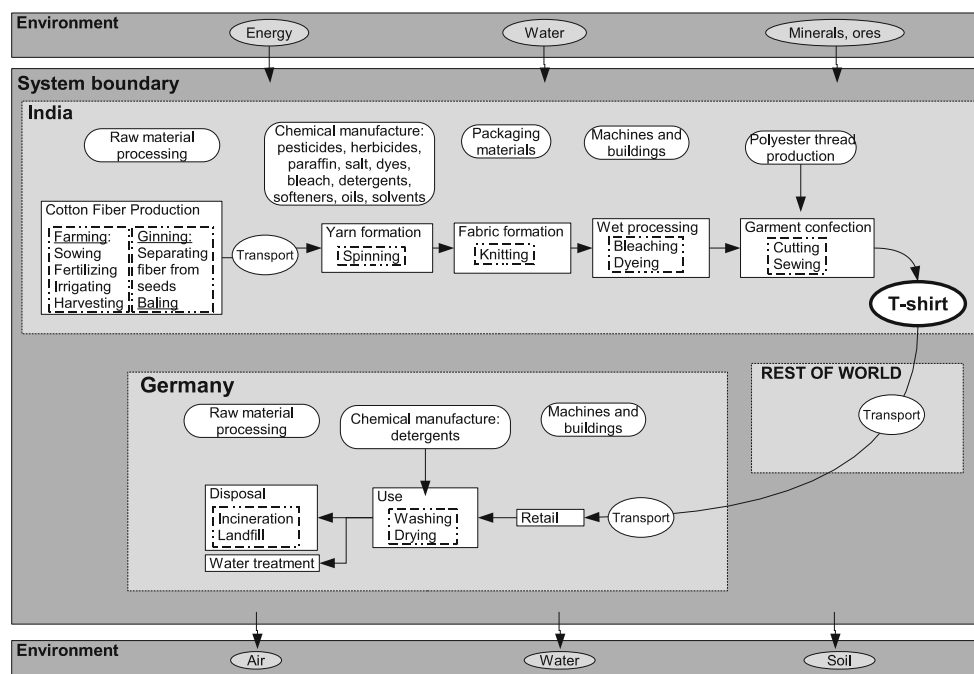
The structure of this article relates to the spatial, product, and pollutant dimensions of the study. First, the system boundaries and functional unit for two products are

described (Section 3). The data gathering strategy and the inventory data sources are outlined in Section 4. The spatial inventory results are then analyzed, and their implications are discussed in Section 5, including the particularities of different types of pollutants, use-phase scenarios, and the challenge of linking inventory and impacts in this LCI. Section 5 summarizes our conclusions, along with suggestions for building modular LCIs to accommodate global production–consumption processes.

## 2 System boundaries and functional unit description

This LCI is composed of two distinct product chains: a cotton T-shirt produced in India and a polyester jacket manufactured in China, both consumed in Germany. The treatment of the two is not strictly parallel, since the cotton chain in India is much better characterized than the polyester in China.

The processes considered in the cotton chain are the following (Fig. 1): (1) agriculture, including direct and indirect energy inputs, irrigation, commercial fertilizers, and pesticides, ginning (separation of seed and fiber); (2) textile processes, including spinning, knitting, bleaching, dyeing, apparel confection, with packaging, direct and indirect energy use, chemicals, and water use; (3) transport stages in India, Germany, and intercontinental; (4) retail in



**Fig. 1** System boundary and processes considered for the cotton T-shirt production–consumption chain. The system is divided into three boxes: India (producing country), Germany (consuming country), and

Rest of World. The differences with the polyester jacket chain are explained in the text

Germany; (5) use phase, washing, and drying, taking into account electricity, detergent manufacturing, and water treatment; (6) disposal through landfill and incineration.

The processes considered in the polyester chain are the following: (1) resin production, including the production of base ingredients; (2) textile processes, spinning, knitting, apparel confection, considering only direct and indirect energy use, without chemicals, packaging, or water use; (3) transport in China, Germany, and intercontinental. The retail, use, and disposal processes are the same as those for the cotton chain although adapted to the polyester product.

The functional unit is “100 days of a garment being worn,” with 100 days, or once a week for 2 years, or every 2 days for two seasons, estimated to be a reasonable lifetime for a garment. Although the functional unit is the same for both jacket and T-shirt, the secondary functions are very different, and no comparative assertion can be issued between these two products. However, contrasting the life cycle emissions of these products is highly interesting since there are significant differences in the use phase: the T-shirt is estimated to be washed once every two wearings, 50 times total during its lifetime, and the jacket washed three times a season or six times during its lifetime.

If a garment has a lifetime longer than 100 days, the relative contribution of the use phase to the total environmental impacts increases; however, the environmental burden per day of a garment being worn decreases, since the production and disposal contributions are distributed over a larger number of days. Conversely, a garment which is worn a few times, then almost immediately discarded, will have a much lower environmental impact from its use phase, although its impact per day of being worn will be much larger.

### 3 Data basis of the spatially explicit life cycle inventory

#### 3.1 Method

This in-depth life cycle inventory including processes in both developed and developing countries is based on publicly available data sources, with a specific emphasis on gathering and adapting representative data for emerging countries. In industrialized countries, significant efforts have been made to compile and update inventories for product and process life cycle analysis: in Switzerland EcoInvent (Frischknecht and Rebitzer 2005); in Germany, Gemis (Fritsche and Schmidt 2007) or GaBi (GaBi 2008); Environmental Input–Output for the USA (Suh 2003), Denmark (Weidema et al. 2005), and others (Curran et al. 2006). This work, however, remains to be performed for emerging/developing countries where data availability is a basic problem for establishing LCIs. As a consequence, the United Nations Environment Programme–Society of Envi-

ronmental Toxicology and Chemistry Life Cycle Initiative has highlighted capacity building for LCA in developing countries as a work area for its second phase in 2007–2010. The ongoing EU 6th framework project Exiopol (2008) will contribute international Input–Output data for many pollutants and economic sectors.

In some cases, the use of the existing life cycle databases for industrialized countries may be applied to emerging/developing countries with little risk of error. However, the potential of large differences even in fairly standard industrial processes should not be underestimated (Berrah et al. 2007). In our study, we systematically prioritize local data. We find large differences between industrialized country processes and emerging country ones and thus demonstrate the need for detailed local data, especially for, but not limited to, energy infrastructure.

In this research, we use a combination of approaches to create life cycle inventories for agricultural and industrial processes in India and China. We use data following a preference hierarchy of three broad categories. The first category consists of detailed *local* data, from our industry partner Switcher, publicly available sources, either LCA or other approaches. This is fortunately the case for most of the Indian and European data, as well as most energy processes. The second category is detailed process data, adapted to regional infrastructure. This is the case for the Chinese polyester part of the study, where we use Indian data if no Chinese data is available, and European or USA studies otherwise. The last category is an existing LCA database: EcoInvent (Frischknecht and Rebitzer 2005), when no detailed process data exists. This is the case for specialty and basic chemical manufacturing, as well as infrastructure (buildings and machines). For these, we adapt standard LCA processes to account for the local electricity production.

We also choose our data sources to be as close to the year 2000 as possible, although some exceptions are inevitable.

#### 3.2 Summary of the inventory data

The inventory focuses on four common atmospheric pollutants: carbon dioxide (CO<sub>2</sub>), nitrogen oxides (NO<sub>x</sub>), particulates (PMs), and sulfur dioxide (SO<sub>2</sub>) as well as primary nonrenewable energy. The particulate diameter is not specified in many of our sources, so no size information is available, and all PM emissions are reported as total PM.

Since the full details of the inventory are lengthy, the following is a bullet-point summary of the full inventory data basis, which is completed in the [Electronic supplementary material](#). The only stage described in full here is the electricity modeling for China and India. Some of our most important references appear only in the [Electronic supplementary material](#) but can be found in the full bibliography.

1. *Cotton Agriculture in India*: is surprisingly energy-intensive, due to decentralized and poorly regulated groundwater irrigation. Primary energy per cotton yield is even higher than in the USA. This argues against using a standard “developing country” cotton process as done in Wiegmann (2002).
2. *Textile manufacture in India*: we use a combination of regional material flow analysis (Erkman and Ramaswamy 2003) and an industry energy study (Lehmann Pollheimer 2006). The most energy-intensive process is dyeing, which uses wood-based heat. The CO<sub>2</sub> emissions and energy from the wood do not appear in our inventory, since they are considered to be from renewable biomass; however, the NO<sub>x</sub> emissions are included. Power from diesel generators is included, necessary because of frequent power outages in India.
3. *Textile manufacture in China*: due to lack of local data, we rely principally on a USA polyester study (Franklin 1993), resulting in high uncertainty for this phase, since the Chinese energy use may be much higher (Berrah et al. 2007).
4. *Electricity emissions in China and India*: both Chinese and Indian electricity comes predominantly from coal-fired thermal power plants: 78% and 69%, respectively (IEA 2004). They are also over 99% self-sufficient in electricity production. The emissions from the coal-based electricity of India and China are thus the focus of our inventory efforts, and the results are summarized in Table 1.  
The CO<sub>2</sub> emissions for India are determined from the Central Electricity Authority (CEA) database for the Kyoto Clean Development Mechanism (CEA 2007). The Chinese CO<sub>2</sub> emissions are estimated from a combination of the China Energy Databook (Sinton et al. 2004), International Energy Agency (IEA) data (IEA 2007) and the Carbon Dioxide Information Analysis Center (Marland et al. 2007).  
The China Energy Databook (Sinton et al. 2004) provides Chinese SO<sub>2</sub> and particulate emissions for the entire electric sector but no information on NO<sub>x</sub> emissions. For Chinese NO<sub>x</sub>, we use the Indian value. Indian NO<sub>x</sub>, particulate, and SO<sub>2</sub> emissions are found in
5. *Mittal and Sharma (2004) and Mittal (2006)*. These are overall consistent with the EcoInvent process emissions for Polish coal electric production, which we adapt to account for the differences in CO<sub>2</sub> emissions.  
Data on transmission and distribution losses are available from China (Sinton et al. 2004) but include losses due to theft for India (TERI 2006). From an LCA perspective, stolen electricity is not lost. The Chinese 8% transmission and distribution loss to light industry is thus used for both India and China.
5. *Transport stages*: the transport stages include national and international freight, as well as international personnel transport. Consumer transport to and from the retail location is excluded, as it may be on the same order of magnitude as the entire production–consumption chain (Browne et al. 2005).
6. *Freight in India*: the long distances of truck freight transport in India warrant a dedicated process model. This is based on the Euro 0 emissions standard (a conservative estimate). The loading factor for India is almost the double (Reddy et al. 2000) of what is typically used in European LCAs. The results are shown in Table 1.
7. *Retail in Germany*: this process is taken from Environmentally Extended Input–Output analysis, with the difficulty of the determination of the appropriate monetary amount to apply to the emission factors. In fact, we keep this component separate from the total of all other emissions, due to its large estimated error margin.
8. *Use phase in Germany*: the use phase is explored in some detail, including detergent composition, water treatment, number of washings and dryings, loading factor, temperature of washing, and efficiency rating of equipment. Due to its importance, various use-phase scenarios are analyzed in the discussion.
9. *Disposal in landfill and incineration*: a disposal phase combining standard landfill and incineration processes is given; no recycling is considered. The CO<sub>2</sub> emissions from the cotton are considered to be renewable and are not included in the total, in contrast to the fossil polyester emissions.

**Table 1** Emissions of CO<sub>2</sub>, NO<sub>x</sub>, particulates, and SO<sub>2</sub> for key energy processes in China, India, and Germany

Emissions from energy	China 1kWh	India 1kWh	Germany 1kWh	Heat 1MJ	India transport 1 ton-km
Coal fraction (%)	78	69	51		
Fossil fraction (%)	84	82	63		
Carbon dioxide (kg)	0.87	0.88	0.62	0.090	0.31
NO <sub>x</sub> (kg)	0.0055	0.0036	0.0006	0.00014	0.0048
PM (kg)	0.0027	0.0020	0.0007	0.00006	0.0004
SO <sub>2</sub> (kg)	0.0060	0.0057	0.0005	0.00047	0.0003



## 4 Results, implications and scenarios

### 4.1 Spatial LCI results

Our results confirm the need for using spatially explicit data at the national level, for any process which requires energy. For example, the surprisingly energy-intensive Indian cotton cultivation cannot be modeled assuming either US or Chinese cultivation processes. Local data are especially important for the electricity-related emissions shown in Table 1. In this case, the inclusion of a variety of pollutants in the LCI is enlightening. Indeed, simply substituting European electricity processes into the Chinese and Indian mixes would not change the CO<sub>2</sub> emissions much but would result in massive underestimates of NO<sub>x</sub> (a factor 4 to 6), particulates (a factor of 2 to 3), and SO<sub>2</sub> (a factor of 8 to 9).

The overall results for the four atmospheric pollutants, as well as nonrenewable primary energy, are summarized in Table 2 for a cotton T-shirt weighing 0.25 kg and in Table 3 a polyester jacket weighing 0.5 kg, weights purposefully chosen for easy scaling. The country of location of the emissions is indicated in each case. The emissions due to international transport occur in the Rest of World compartment. The percentage of emissions in the producing and consuming countries, as well as internationally, is also given. The origin of electricity is the most crucial factor

driving the atmospheric emissions in this study. Despite the global nature of the chain, transportation is much less significant, accounting for 4% of CO<sub>2</sub> emissions and 14% for NO<sub>x</sub> (due to local transport in India for the T-shirt).

Nonrenewable primary energy consists of fossil fuels and nuclear energy. The only process stage where renewable primary energy plays a significant role is the cotton dyeing, where 72% of the total primary energy is from wood.

The uncertainties given with the data stage in the [Electronic supplementary material](#) correspond to primary energy and CO<sub>2</sub> and are assumed to be larger for the other pollutants. The aggregate uncertainties are calculated assuming the error is normally distributed (except for production in China, where it is more likely to be systematic).

### 4.2 Production or consumption? Insights from studying two garments

A cotton T-shirt and a polyester jacket cannot be compared as substitutable products but are both representative of the general apparel product category. Contrasting their lifecycle emissions showcases the variable importance of the use phase. The T-shirt requires 50% more nonrenewable primary energy than the jacket, despite being half its weight; however, the T-shirt only emits 30% more CO<sub>2</sub>

**Table 2** Spatial, non-renewable primary energy and emissions of CO<sub>2</sub>, NO<sub>x</sub>, total particulates, and SO<sub>2</sub> for 100 days of garment use for T-shirt

Cotton T-shirt (0.25kg) Units	Primary energy MJ	CO <sub>2</sub> kg	Uncertainty	NO <sub>x</sub> g	PMs g	SO <sub>2</sub> g	Uncertainty
Total	240.11	14.00	10%	48.98	32.70	32.03	20%
Production: India	26%	29%	15%	76%	43%	67%	25%
Cotton fiber	28.30	1.82	30%	17.11	5.43	9.83	50%
Yarn	13.07	0.96	10%	4.93	2.75	6.06	20%
Fabric	2.56	0.16	10%	0.96	0.46	0.99	20%
Colored fabric	10.37	0.63	10%	8.06	4.76	4.05	20%
Garment	2.23	0.08	10%	0.50	0.12	0.26	20%
Transport	6.05	0.37	20%	5.88	0.46	0.38	35%
Rest of World	0.4%	0.4%	20%	1.0%	0.1%	1.2%	20%
Transport	0.85	0.05	20%	0.51	0.05	0.38	35%
Sale and use: Germany	74%	71%	10%	23%	57%	31%	20%
Transport	0.22	0.01	20%	0.10	0.04	0.02	35%
Washing (50 times)	62.16	3.48	10%	4.25	10.89	3.87	20%
Drying (50 times)	114.23	6.44	10%	6.60	7.70	6.18	20%
Disposal	0.06	0.00	20%	0.08	0.04	0.00	35%
Retail (5 USD)	–	0.91	100%	2.12	1.21	0.72	100%

Data are shown separately for each process stage and summed up for each location, showing distinction between the behavior of energy and CO<sub>2</sub>, on the one hand, and NO<sub>x</sub>, particulates, and SO<sub>2</sub> on the other. The retail stage is kept separate from the total, as explained in the text. The uncertainties for the location totals and total emissions are estimated assuming normal distributions, except for the Chinese polyester production, where we expect the error to be systematic

than the jacket. On the whole, the total lifecycle emissions for the T-shirt and the jacket are on the same order of magnitude, with the cotton T-shirt emissions 30% higher than for the polyester jacket, except for SO<sub>2</sub>, where the proportion is reversed.

This similarity in emission quantities ends as soon as the contributions of each location of emission and product stages are examined. For the T-shirt, roughly two thirds of the CO<sub>2</sub> and particulate emissions occur in the consuming country, with that proportion reversed for NO<sub>x</sub> and SO<sub>2</sub>. In the case of the jacket, all the pollutants have the vast majority (70–90%) of their emissions in the producing country. In the case of the T-shirt, reducing the lifecycle energy use and CO<sub>2</sub> emissions is best addressed by a focus on the consumption phase, but for the jacket, the production phase is the most crucial.

The striking difference in the location of energy use and CO<sub>2</sub> emissions—over two thirds in the consuming country for the T-shirt, less than one third for the jacket—are due to differences in their use phase: the T-shirt is washed and dried 50 times, compared to six times for the jacket. This can be clearly seen in Fig. 2. The importance of the use phase in apparel for CO<sub>2</sub> emissions is widely known; however, as our results make clear, it should not be taken as universal for all apparel types. Indeed, because of the usual underestimate of the emissions of cotton agriculture and processing stages, the proportion is often assumed to be much higher than two thirds. Moreover, this proportion is not true of all pollutant types, as reversed proportions for NO<sub>x</sub> and SO<sub>2</sub> demonstrate, shown for SO<sub>2</sub> in Fig. 3.

For both the T-shirt and the jacket, NO<sub>x</sub> and SO<sub>2</sub> emissions are larger in the production country than the share of energy use would warrant, by a factor of more than 4. Fossil fuel combustion accounts for the majority of the

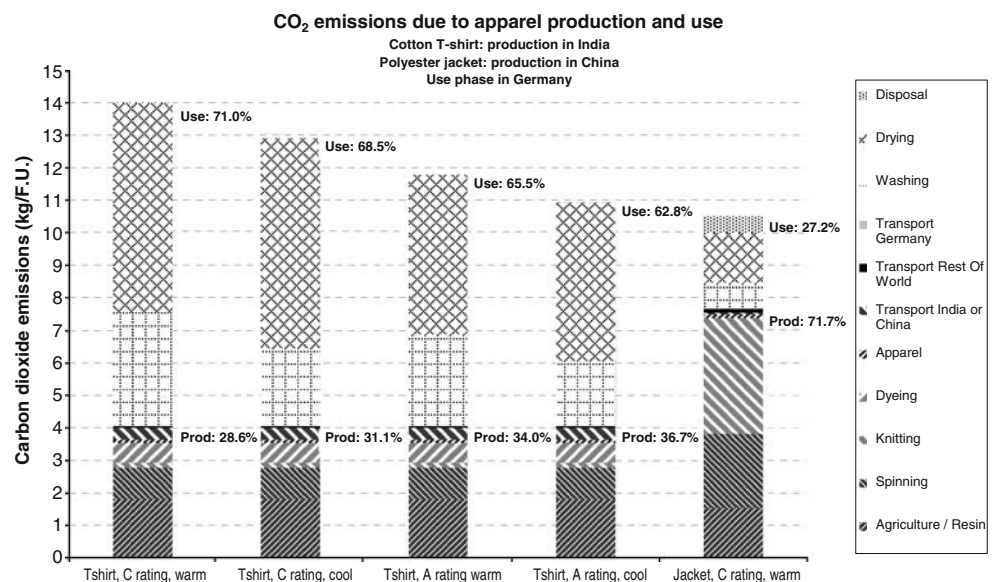
NO<sub>x</sub> emissions for cotton, the totality for polyester, and all the SO<sub>2</sub> emissions. The higher proportion in the production country is thus due to the lack of emission standards and filtration implementation. The nonfossil NO<sub>x</sub> emissions of cotton have several origins. NO<sub>x</sub> is emitted in the agricultural process, through the production and use of N fertilizers, at the level of 10% of the total. It is also emitted in the cotton dyeing process because of the large quantity of wood burned to produce heat. Since the wood is considered to be renewable biomass, the biogenic CO<sub>2</sub> emissions from the wood combustion are not included in our inventory; however, the corresponding NO<sub>x</sub> emissions contribute to almost 10% of the total. To address life cycle NO<sub>x</sub> and SO<sub>2</sub> emissions, the production phase is the most important for both products.

The particulate emissions are also predominantly due to electricity use but also have contributions from material production phases: steel and concrete (used for machinery and buildings) and laundry detergent. These non-energy contributions cause the higher-than-expected emissions in the consumption phase. Moreover, the difference in emission factors between Germany, China, and India is smaller for particulates (factor of 3–4) than for NO<sub>x</sub> or SO<sub>2</sub> (factors of 6–12) as can be seen in Table 1.

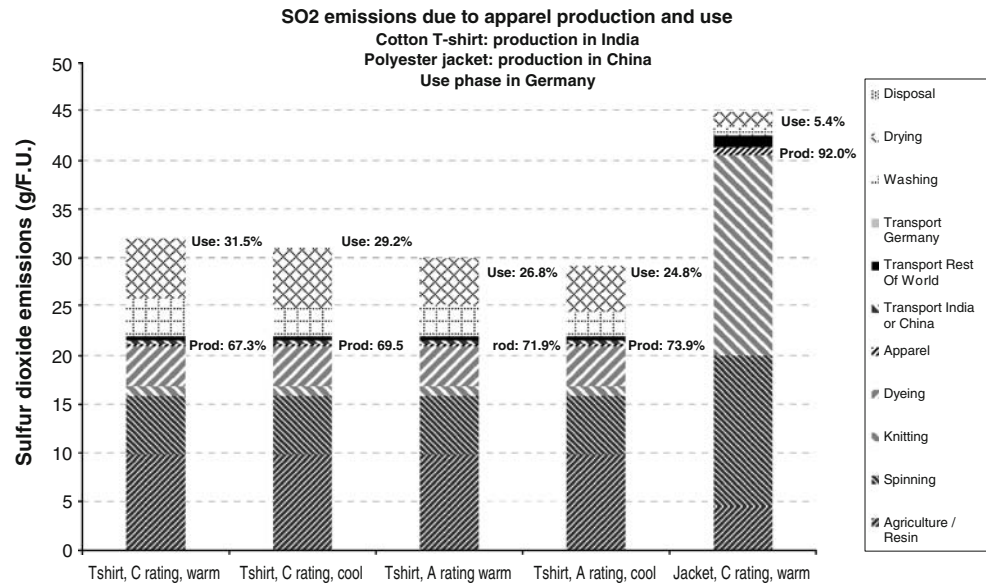
### 4.3 Use-phase scenarios

Because of the importance of the use phase for energy and CO<sub>2</sub> for the T-shirt product and the availability of use-phase alternatives, we present four scenarios showing the relative impact of (1) machine and air drying, (2) washing temperature choice, and (3) machine efficiency rating. The results are shown in Fig. 2 and Table 4. These scenarios allow us to define hierarchies of consumer behavior

**Fig. 2** Carbon dioxide emissions per 100 days of garment use for the cotton T-shirt (considering different use scenarios) and for the polyester jacket. The relative impacts of use phase are clear: air vs. machine drying is the most important, followed by the temperature of washing, with the machine efficiency rating coming last. A similar plot for energy is in the article's [Electronic supplementary material](#), Figure SM-1



**Fig. 3** Sulfur dioxide emissions per 100 days of garment use for the cotton T-shirt (considering different use scenarios) and for the polyester jacket. Note the difference in the production-use distribution of the T-shirt and jacket



choices, an approach encouraged in sustainable consumption (Kaenzig and Jolliet 2006; Bilharz et al. 2008).

The most important choice a consumer can make is that of machine or air drying (reductions of more than 60% in the use-phase emissions with air drying), followed by temperature of washing (30% reduction of the washing phase emissions at 40°C compared to 60°C), with appliance

efficiency rating being the least important (20% reduction with A rating appliances compared to C rating, other parameters held constant). In this case, the use-phase behavior of the consumer is much more important than the appliance chosen for the use phase: by switching to air drying and cooler washing, the total lifecycle product emissions are halved.

**Table 3** Spatial, non-renewable primary energy and emissions of CO<sub>2</sub>, NO<sub>x</sub>, total particulates and SO<sub>2</sub> for 100 days of garment use for polyester jacket

Polyester jacket (0.5kg) Units	Primary energy MJ	CO <sub>2</sub> kg	Uncertainty	NO <sub>x</sub> g	PMs g	SO <sub>2</sub> g	Uncertainty
Total	156.39	10.52	35%	35.97	21.50	45.00	75%
Production: China	71%	72%	50%	88%	85%	92%	80%
Resin	26.82	1.55	50%	4.14	2.38	4.48	80%
Yarn	29.23	2.28	50%	14.16	8.76	15.53	80%
Fabric	52.92	3.54	50%	11.82	6.55	20.54	80%
Colored fabric	–	–	–	–	–	–	–
Garment	1.46	0.11	50%	0.73	0.46	0.77	50%
Transport	0.82	0.05	50%	0.80	0.06	0.05	80%
Rest of World	1.2%	1.1%	50%	3.8%	0.7%	2.6%	50%
Transport	1.84	0.11	50%	1.36	0.15	1.18	80%
Sale and use: Germany	28%	27%	10%	8%	15%	5%	20%
Transport	0.82	0.02	20%	0.19	0.07	0.05	35%
Washing (6 times)	14.92	0.78	10%	0.98	1.19	0.90	20%
Drying (6 times)	27.41	1.55	10%	1.58	1.85	1.48	20%
Disposal	0.14	0.51	20%	0.20	0.03	0.01	35%
Retail (10 USD)	–	1.83	100%	4.23	2.43	1.44	100%

Data are shown separately for each process stage and summed up for each location, showing distinction between the behavior of energy and CO<sub>2</sub>, on the one hand, and NO<sub>x</sub>, particulates, and SO<sub>2</sub> on the other. The retail stage is kept separate from the total, as explained in the text. The uncertainties for the location totals and total emissions are estimated assuming normal distributions, except for the Chinese polyester production, where we expect the error to be systematic



**Table 4** Details of the cotton T-shirt use-phase scenarios shown in Fig. 2, along with the use-phase CO<sub>2</sub> emissions of each

Scenario	Function	Weight (kg)	Appliance rating	Washing temperature (°C)	Number of washings and dryings	CO <sub>2</sub> emissions: washing and drying (kg)	CO <sub>2</sub> emissions: washing only (kg)
A	T-shirt	0.25	C	60	50	9.9	3.5
B	T-shirt	0.25	C	40	50	8.8	2.4
C	T-shirt	0.25	A	60	50	7.7	2.8
D	T-shirt	0.25	A	40	50	6.9	2.0

A five-fold difference exists between the most energy-intensive scenario (machine drying, warm washing, inefficient machines) and the most energy sparing (air drying, cool washing, efficient machine)

This result also highlights the importance of developing detergents which are effective at lower temperatures. Another consideration is the necessity of frequent washings. If a garment requires fewer washings (for example, through resistance to stains or sweat), the use-phase impacts will be correspondingly lowered.

In contrast, the SO<sub>2</sub> emissions are much less affected by changes in the use phase, as can be seen in Fig. 3, since 67% and 92% are emitted in the production phase for the T-shirt and jacket, respectively.

#### 4.4 Evidences for Kuznets and non-Kuznets emissions

The CO<sub>2</sub> emissions in Tables 2 and 3 are proportional to energy use, mostly electricity. Since fossils represent 80% of technical primary energy worldwide, the CO<sub>2</sub>–energy proportionality is the rule rather than the exception. CO<sub>2</sub> thus indicates the location of the largest energy use. In the absence of carbon capture technology, CO<sub>2</sub> is found and emitted in comparable quantities per megajoule, in all fossil-fuel energy-intensive processes, no matter where they are located.

In contrast, the emission of NO<sub>x</sub>, particulates, and SO<sub>2</sub>, although also mostly due to fossil fuel combustion, is not proportional to the energy use, since it can be mitigated by filtration technology. The energy and emissions required by the filtration are included in the inventory. In the following discussion, we focus on CO<sub>2</sub>, NO<sub>x</sub>, and SO<sub>2</sub>, leaving aside particulates, since their larger contribution from material production complicates their behavior.

The reduction in NO<sub>x</sub> and SO<sub>2</sub> emissions in Germany is due to the existence of effective filtration technologies and the implementation of environmental policies limiting acidifying emissions. Indeed, a similar study done in the early 1980s, before these policies were implemented, would show the NO<sub>x</sub> and SO<sub>2</sub> fractions to be closely aligned with CO<sub>2</sub>. The reduction of NO<sub>x</sub> and SO<sub>2</sub> emissions in many developed countries is put forward as an example of the Environmental Kuznets Curve (EKC) conjecture: where environmental impacts first rise with economic growth but eventually decrease as increased

prosperity allows the environment to become a higher priority and generates the revenue necessary for impact mitigation (Dinda 2004; Stern 2004).

The EKC is widely acknowledged to be a limited phenomenon, applying to a small subset of impacts: those with (1) local, immediate effects and/or (2) convenient technological means of abatement or substitution (De Bruyn et al. 1998). Acidifying emissions NO<sub>x</sub> and SO<sub>2</sub> fulfill both these conditions; ozone depleting emissions fulfill the second. CO<sub>2</sub> emissions fulfill neither condition: they have global and deferred impacts, and no convenient carbon-capture technology exists to date.

In our spatial LCI, we find evidence for both EKC (NO<sub>x</sub> and SO<sub>2</sub>) and non-EKC (CO<sub>2</sub>) emission behavior in the context of a global production–consumption chain. The EKC emissions are relatively smaller in the higher-income consuming country; the non-EKC emissions are high in both the high-income consuming country and the lower-income producing country (see Figures SM-2 and SM-3 in the [Electronic supplementary material](#) for CO<sub>2</sub> and SO<sub>2</sub>, respectively). The difference between EKC and non-EKC emissions is clear in our data, despite the evidence that developing and emerging countries may be adopting some abatement technologies faster than expected, given their income level (Dasgupta et al. 2002).

Our results provide support for an interpretation of the EKC as a displacement of local environmental impacts, rather than global reduction. The reduction in NO<sub>x</sub> and SO<sub>2</sub> emissions in Germany happened as large sectors of European industry (including textile) moved overseas. The lifecycle profile of these products benefits from the environmental abatement policies only during the use phase—the production phase may have worse impacts than before its displacement, depending on the conditions in the new country of production. The total product lifecycle emissions may not be absolutely reduced.

#### 4.5 Linking impacts and inventories in the textile industry

Major caveats apply to our LCI for both water-borne pollution and specialty chemicals. Severe water pollution is

a consequence of the production and use of textile products: at the production stage, dye-laden effluents require treatment (lacking in India and in China); at the consumption stage, eutrophication results from discharge of laundry detergent.

The textile industry uses many specialty chemicals. Pesticides are massively used in cotton cultivation, and reactive dyes are used for dyeing. The exact quantities and formulations are not publicly available, but the resulting severe health damage is documented (Mancini et al. 2005; CSA and MARI 2005; Bhalli et al. 2006; Prithiviraj 2002; Govindarajalu 2003; Michaels 1988). Previous LCA work has attempted to understand the production phase of such specialty chemicals (Geisler et al. 2004; Dahllöf and Steen 2005) and their fate in a river system (Beck et al. 2000) but unfortunately does not address the topic of fate and impact when these chemicals are massively discharged into the environment with no or little dilution. So far, the most comprehensive effort at modeling pesticide impacts through a product LCA was done on bananas in Costa Rica (Humbert et al. 2007). This work relies on detailed data, in the absence of which a life cycle approach cannot be expected to produce reliable health and ecosystem results.

In India and China, workplace safety is much lower than in Europe or the USA. Worker exposure to dangerous chemicals and emissions is thus much more prevalent. The dyes used in the cotton industry are often azo dyes, which are currently regulated and tested for in the EU, as they emit harmful and even cancer-causing chemicals during the use phase (European Parliament and EC 2002; Robins and Humphrey 2000). Indeed, many dyes banned in Europe are now manufactured in India and are present in imported textiles. The health impact of these chemicals on the textile and chemical workers must be even more severe than on the European consumer. Another health effect within the cotton workplace is byssinosis (Mishra et al. 2003; Laraqui et al. 2002), a respiratory disease due to exposure to cotton fibers. An LCA assessing damage beyond the factory walls or outside the crop field will thus miss significant human health impacts. In these cases, health studies of affected populations are necessary to complement the LCA findings.

Salt is used in the reactive dyeing of cotton textile. Despite some efforts at salt recovery, large quantities are discharged in the wastewater: 20,000 tons per year (Erkman and Ramaswamy 2003). This has led to the salinization of local drinking and agricultural water (Kurian 2005) with health and ecosystem impacts. However, salinization is not a traditional impact category of LCA, despite being a severe problem in many emerging/developing countries. The volume of water used for textile is an environmental concern of its own. One of the largest scale environmental disasters, the drying up of Aral Sea, is a direct result of cotton irrigation in Central Asia. However, for such an impact to be brought to light

by an LCA, the water usage of a process must be related to the local hydrological cycle (including factors such as downstream water uses).

## 5 Conclusion and recommendations

In this article, we presented a spatial LCI, based on local process data whenever available, for the global production–consumption chains of two textile products. Our conclusions are presented along the three dimensions of our LCI: spatial, product, and pollutant. Finally, the lessons from this study regarding cleaner production or consumption are summarized.

### 5.1 Recommendations for local, modular process-based LCI databases

For energy-intensive processes, this work demonstrates that the use of local and detailed data is necessary to assess the environmental impact of the production and consumption phases of a product. However, existing LCI databases are not designed to allow the easy modification of underlying energy infrastructures, since they focus on primary energy carriers. To remedy this design flaw, we recommend that inventories report intermediate energy flows (electricity, heat and transportation) as well as primary energy flows. Then the underlying energy infrastructure can be modeled separately and adapted for different countries and conditions. This is necessary for the applicability of LCA approaches to globally produced goods. Even when the result wanted is a global average product, the range of local production technologies is necessary to understand how meaningful this global average is.

Another challenge for a spatial LCI is the disaggregation of emissions by their location. For a given product, some components may be produced in country A, have a processing step in country B, with final consumption in country C, and disposal in country D. In order for the analysis to follow this complexity, the end result should be expressed not only as total emissions but as emissions in each location (as we have done in Tables 2 and 3). This is a significant book-keeping challenge for LCI databases and their modeling software, but this is a necessary step for the subsequent pollutant transport and impact analysis stages. This is especially true since human health impact factors are strongly dependent on population density, which is much higher in China and India than in Europe or the USA.

### 5.2 Conclusions from studying different products

Our results showcase the importance of the choice of product, T-shirt or jacket, even for the same functional unit

defined as “100 days of wearing a garment.” The production/consumption insights gained for one product and one pollutant (say CO<sub>2</sub> and a T-shirt) cannot be applied more generally (to a jacket or SO<sub>2</sub>, for instance). The biggest difference between the two products demonstrates the relative importance of the use phase, since the jacket requires fewer washings and dryings than the T-shirt. Moreover, the use phase itself is highly variable, depending on user behavior and equipment choices. From our use-phase scenarios, we find the hierarchy of user choice impacts to be the following: (1) air vs. machine drying, (2) temperature of washing, (3) equipment efficiency.

### 5.3 Conclusions from accounting for different pollutants

In our inventory of four pollutants, CO<sub>2</sub> is approximately proportional to fossil fuel combustion (with differences between coal, oil, and natural gas), particulates have mixed fossil fuel and material contributions, and NO<sub>x</sub> and SO<sub>2</sub> are caused by, but not proportional to, total fossil fuel combustion. NO<sub>x</sub> and SO<sub>2</sub> follow the Environmental Kuznets Curve (EKC): their emissions tend to decrease with higher income in a country. We can thus classify these pollutants non-EKC (CO<sub>2</sub>) and EKC (NO<sub>x</sub> and SO<sub>2</sub>). The displacement of manufacturing to developing countries may result in higher emissions of the EKC pollutants than if the manufacturing had remained in the industrialized country.

This analysis demonstrates the power of spatial LCA for global environmental analysis. If the LCI could be extended over time (at decadal intervals for example, taking into account technological change and trade flow modifications), it could serve as a tool to assess the environmental impact of globalization from a product or functional unit perspective.

For many of the pollutants involved in the textile product chain, a full LCA is extremely challenging, due to the lack of impact information for many specialty chemicals: pesticides, dyes, detergent ingredients. Even the impact of salt used in the cotton dyeing process is not included in traditional LCA impact categories. This is a major research need for the increasing number of goods involving a globalized life cycle.

### 5.4 Cleaner production or cleaner consumption?

What are the most important conclusions from this work regarding cleaner production and cleaner consumption?

For the T-shirt, the predominance of the use phase for energy and CO<sub>2</sub> emphasizes cleaner consumption, with equipment efficiency coming last in the hierarchy of consumer choices and air vs. machine drying and washing temperature coming first. In this case, consumer behavior

is more important than equipment rating in terms of energy use, a result with interesting implications for energy policy and the rebound effect. The rebound effect occurs when energy savings following efficiency measures are not as large as expected or even negative (Hertwich 2005; Herring and Roy 2007). Our use-phase scenarios show that an emphasis on equipment efficiency may lead to a rebound effect in cases where the consumer behavior is more important than the efficiency rating. Once in possession of an A-rated appliance, the consumer may switch to more frequent or wasteful use (for example using warmer washing temperatures) in the mistaken belief that the equipment is so efficient that the energy use will in any case be lower than with a B- or C-rated appliance. Environmentally conscious appliance and apparel companies should therefore include consumer education as part of their efforts, emphasizing air-drying and cool washing.

Textile firms, of course, exert more control on the production phase of their garments. In a cleaner production perspective, the two priorities are a clean (or cleaner) electricity supply and water treatment. The electricity issue can be addressed by financing renewable technologies (Switcher, for example, funds wind electricity in India) but also by supporting regulatory improvements of the existing electricity production. Regarding water, textile firms can influence the scale of water use, the use of pesticides and harmful dyes and salt, and especially implement water treatment.

However, the question of cleaner consumption or cleaner production of one functional unit corresponding to a product evades the more important question of scale of consumption. As Schor (2005) points out, dropping textile prices have led to larger quantities consumed and consequently higher environmental burdens. Tackling the emission of non-EKC pollutants like CO<sub>2</sub> requires the scale of global consumption to be reduced, at least as long as electricity is produced using fossil fuels.

**Acknowledgments** This work is part of the TREI-C project, partly funded by a grant from the Geneva International Academic Network (GIAN). The Swiss apparel company Switcher was a participant; we thank them for their collaboration. It benefited from student projects by César Lador and Priti Nigam and the masters thesis of Ana Rita Carvalho of the EPFL (Switzerland). We also thank Dr. Isabelle Blanc (Armines), Dr. Manuele Margni (École Polytechnique de Montréal), Shanna Shaked (University of Michigan), and Vincent Rossi (Ecointsys - Life Cycle Systems) for helpful discussions. The manuscript was significantly improved by the comments of anonymous reviewers. Any remaining errors are the responsibility of the authors. Ramesh Ramaswamy (Resource Optimization Initiative), who recently passed away, was always ready with cheerful advice and criticism. He is sorely missed.

## References

- Aizenshtein EM (2006) World production and consumption of polyester fibres and thread. *Fibre Chem* 38:3
- Baffes J (2004) Cotton: market setting, trade policies, and issues. World Bank Policy Research Working Paper 3218
- Beck A, Scheringer M, Hungerbühler K (2000) Fate modelling within LCA: the case of textile chemicals. *Int J LCA* 5(6):335–344
- Berrah N, Feng F, Priddle R (2007) Sustainable energy in China: the closing window of opportunity. The International Bank for Reconstruction and Development/The World Bank
- Bhalli JA, Khan QM, Nasim A (2006) DNA damage in Pakistani pesticide-manufacturing workers assayed using the Comet assay. *Environ Mol Mutagen* 47(8):587–593
- Bilharz M, Lorek S, Schmitt K (2008) “Key points” of sustainable consumption. Geer Ken, Theo, Tukker, Arnold, Vezzoli, Carlo, and Ceschin, Fabrizio. Proceedings of Sessions I-II of the 2nd Conference of the Sustainable Consumption Research Exchange (SCORE!) Network, March 10–11, Brussels, Belgium, pp 287–306
- Boustead I (1997) Ecoprofiles of selected manmade fibers. CIRFS
- Browne M, Rizet C, Anderson S, Allen J, Basile K (2005) Life cycle assessment in the supply chain: a review and case study. *Transp Rev* 25(6):761–782
- CEA (2007) CO<sub>2</sub> baseline database for the Indian power sector, user guide, version 3.0. New Delhi, Government of India, Ministry of Power, Central Electricity Authority
- Chapagain AK, Hoekstra AY, Savenije HHG, Gautam R (2005) The water footprint of cotton consumption. Value of Water Research Report Series No.18. Delft, The Netherlands, UNESCO-IHE Institute for Water Education
- CSA, MARI (2005) Killing and poisoning pests or human beings? Acute poisoning of pesticide users through pesticide exposure/inhalation. Centre for Sustainable Agriculture & MARI, Secunderabad, India
- Curran MA, Notten P, Chayer JA, Cicas G (2006) Summary of global life cycle inventory data resources. SETAC/UNEP Life Cycle Initiative, pp 1–34
- Dahlöf L (2004) LCA methodology issues for textile products. Göteborg, Sweden, Chalmers University of Technology, Licentiate of engineering thesis, Environmental Systems Analysis
- Dahlöf L, Steen B (2005) A statistical approach for estimation of process flow data from production of chemicals of fossil origin. *International Journal of LCA* online-first, 1–6
- Dasgupta S, Laplante B, Wang H, Wheeler D (2002) Confronting the Environmental Kuznets Curve. *J Econ Perspect* 16(1):147–168
- De Bruyn SM, van den Bergh JCJM, Opschoor JB (1998) Economic growth and emissions: reconsidering the empirical basis of Environmental Kuznets Curves. *Ecol Econ* 25(2):161–176
- Dinda S (2004) Environmental Kuznets Curve hypothesis: a survey. *Ecol Econ* 49:431–455
- Doka G (2007) Email: post waste-water treatment emissions
- EPA (1997) Profile of the textile industry (EPA/310-R-97-009). Environmental Protection Agency, Washington, DC
- Erkman S, Ramaswamy R (2003) Case study of the textile industry in tirupur (chapter 5) applied industrial ecology - a new platform for planning sustainable societies (focus on developing countries with case studies from India). Aicra Publishers, Bangalore, India, pp 44–70
- European Parliament, EC (2002) DIRECTIVE 2002/61/EC OF THE EUROPEAN PARLIAMENT AND OF THE COUNCIL of 19 July 2002 amending for the nineteenth time Council Directive 76/769/EEC relating to restrictions on the marketing and use of certain dangerous substances and preparations (azocolourants)
- Exiopol (2008) Exiopol: a new environmental accounting framework using externality data and input-output tools for policy analysis. <http://www.feem-project.net/exiopol/>
- FAO (2007) AQUASTAT: India country profile <http://www.fao.org/AG/AGL/aglw/aquastat/main/index.stm>. Food and Agriculture Organization of the United Nations
- Franklin (1993) Resource and environmental profile analysis of a manufactured apparel product life cycle analysis (LCA): Woman's Knit Polyester Blouse. Franklin Associates
- Friot D, Antille Gaillard G (2007) Tracking environmental impacts of consumption: an economic-ecological model linking OECD and developing countries. 16th International Input-Output Conference, 2–7 July 2007, Istanbul, Turkey
- Frischknecht R, Rebitzer G (2005) The ecoinvent database system: a comprehensive web-based LCA database. *J Clean Prod* 13:1337–1343
- Fritsche UR, Schmidt K (2007) Global emission model for integrated systems (GEMIS) version 4.4 Manual. 1–166, Oeko-Institut
- GaBi (2008) GaBi - life cycle assessment software system [www.gabi-software.com](http://www.gabi-software.com). <http://www.gabi-software.com/>
- Geisler G, Hofstetter TB, Hungerbühler K (2004) LCA methodology with case study production of fine and speciality chemicals: procedure for the estimation of LCIs. *Int J LCA* 9(2):101–113
- Govindarajulu K (2003) Industrial effluent and health status - a case study of Noyyal river basin. In: Bunch MJ, Suresh VM, Kumaran TV (eds) Proceedings of the Third International Conference on Environment and Health, Chennai, India, 15–17 December, 2003, 150–157 Department of Geography, University of Madras and Faculty of Environmental Studies, York University
- Herring H, Roy R (2007) Technological innovation, energy efficient design and the rebound effect. *Technovation* 27:194–203
- Hertwich EG (2005) Consumption and the rebound effect: an industrial ecology perspective. *J Ind Ecol* 9:1–2 Special Issue on Consumption and Industrial Ecology, 85–98
- Humbert S, Margni M, Charles R, Torres Salazar OM, Quiros AL, Jolliet O (2007) Toxicity assessment of the main pesticides used in Costa Rica. *Agric Ecosyst Environ* 118:183–190
- IEA (2004) International Energy Agency online country statistics <http://www.iea.org/textbase/stats/index.asp>
- IEA (2007) Energy balances of non-OECD Countries, 2004–2005 – 2007 Edition. CD-ROM, International Energy Agency (IEA), Organisation of Economic Co-Operation and Development (OECD)
- IFA, IFDC, IPI, PPI, FAO (2002) Fertilizer use by crop, 5th edn. IFA - International Fertilizer Industry Association
- Jödike A (2001) Möglichkeiten und Grenzen der Ökobilanz bei Chemikalienintensiven Prozessen: Veredlung und Gebrauch eines Baumwoll-T-Shirts. Eidgenössischen Technischen Hochschule Zuerich (ETHZ), Zuerich, Switzerland
- Kaenzig J, Jolliet O (2006) Consommation respectueuse de l'environnement. Federal Office of the Environment, Bern, Switzerland, pp 1–113
- Kurian J (2005) A cleaner production approach for minimisation of total dissolved solids in reactive dyeing effluents. UNIDO UNEP. UNIDO UNEP Guidance and Training Manuals on CPCs - Sectors – Textiles, pp 1–10
- Laraqui CH, Rahhali A, Laraqui O, Tripodi D, Curtes JP, Verger C, Caubet A (2002) Byssinosis and occupational asthma among cotton dust-exposed workers. *Rev Fr Allergol Immunol Clin* 42(2):133–141
- Laursen ES, Hansen J, Bagh J, Jensen OK, Werther I (1997) Environmental assessment of textiles: life cycle screening of textiles containing cotton, wool, viscose, polyester or acrylic fibres. Project no. 369. Copenhagen, Denmark, Danish Environmental Protection Agency
- Lehmann Pollheimer D (2006) Switcher climate project: CO<sub>2</sub>-neutral T-shirt (Report preliminary study, draft version). Basel, ecos
- Mancini F, Van Bruggen AHC, Jiggins JLS, Ambatipudi AC, Murphy H (2005) Acute pesticide poisoning among female and male cotton growers in India. *Int J Occup Environ Health* 11(3):221–232



- Marland G, Boden TA, Andres RJ (2007) Global, regional, and national CO<sub>2</sub> emissions trends: a compendium of data on global change. Carbon Dioxide Information Analysis Center (CDIAC), Oak Ridge National Laboratory, U.S. Department of Energy, Oak Ridge, Tenn., USA
- Michaels D (1988) Waiting for the body count: corporate decision making and bladder cancer in the U.S. Dye Industry. *Medical Anthropology Quarterly*, New Series, 2, 3 (Health and Industry), 215–232
- Mishra AK, Rotti SB, Sahai A, Madanmohan NKA (2003) Byssinosis among male textile workers in Pondichery: a case-control study. *Natl Med J India* 16(2):70–73
- Mittal ML (2006) Anthropogenic emissions from energy activities in India: generation and source characterization <http://www.osc.edu/research/pcrm/emissions/index.shtml>. Ohio Supercomputer Center (OSC), Program for Computational Reactive Mechanics (PCRM)
- Mittal ML, Sharma C (2004) Anthropogenic emissions from energy activities in India: generation and source characterization—part I emissions from thermal power generation in India. Ohio Supercomputer Center (OSC), Columbus, Ohio, USA
- Morand C (2005) Inde: bilan catastrophique pour les OGM. *Le Temps*
- Mueller O (2006) Cotton production in US life-cycle inventory database at <http://www.nrel.gov/lci/database/>
- NEF (2007) Calculating the benefit of energy efficient washing machines. National Energy Foundation, UK
- Nemecek T, Heil A, Huguenin O, Meier S, Erzinger S, Blaser S, Dux D, Zimmermann A (2004) Life cycle inventories of agricultural production systems. Final report ecoinvent 2000 No. 15. Duebendorf, Switzerland, Swiss Centre for Life Cycle Inventories
- Parashar DC, Kulshrestha UC, Sharma C (1998) Anthropogenic emissions of NO<sub>x</sub>, NH<sub>3</sub> and N<sub>2</sub>O in India. *Nutr Cycl Agroecosyst* 52(2–3):255–259
- PMFAI (2006) Statistics - spraying schedule [http://www.pmfai.org/spraying\\_schedule.htm](http://www.pmfai.org/spraying_schedule.htm). Pesticides Manufacturers & Formulators Association of India
- Prithiviraj R M (2002): Dirty Shirts a study of health, safety and environmental concerns in the context of the garment industry in Tirupur region, India. The Netherlands, Goede Waar & Co.
- Pulli R (1997) Ökobilanz eines Baumwoll-T-Shirts mit Schwerpunkt auf den verwendeten Chemikalien. Diplomarbeit an der ETH Zürich, Abteilung für Umweltwissenschaften
- Ramanathan R (2000) A holistic approach to compare energy efficiencies of different transport modes. *Energy Policy* 28:743–747
- Ramaswamy R, Naik G, Gouda P, Patil J, Gowda L (2006) Industrial ecology & agro-industrial policy: study of agro-industrial systems, Karnataka, India. Resource Optimization Initiative (ROI), Bangalore, India, pp 1–107
- Reddy AKN, Anand YP, D'Sa A (2000) Energy for a sustainable road/rail transport system in India. *Energy Sustain Dev* IV(1):29
- Robins N, Humphrey L (2000) Sustaining the rag trade. International Institute for Environment and Development (iied)
- Saouter E, van Hoof G (2002) A database for the life-cycle assessment of procter & gamble laundry detergents. *Int J LCA* 7(2):103–114
- Schor JB (2005) Prices and quantities: unsustainable consumption and the global economy. *Ecol Econ* 55(3):309–320
- SFOE (2006) L'étiquetteEnergie pour les sèche-linge (tumbler). Swiss Federal Office of Energy, Switzerland
- Shah T, Giordano M, Wang J (2004) Irrigation institutions in a dynamic economy—what is China doing differently from India? *Econ Polit Wkly* 39:3452–3461
- Sidler O, Waide P, Lebot B (2000) An experimental investigation of cooking, refrigeration and drying end-uses in 100 households. Presented at the summer study on energy efficiency in buildings for the American Council for an Energy-Efficient Economy (ACEEE) meeting
- Singh S, Singh S, Pannu CJS, Singh J (2000) Optimization of energy input for raising cotton crop in Punjab. *Energy Convers Manag* 41:1851–1861
- Singh H, Mishra D, Nahar NM, Ranjan M (2003) Energy use pattern in production agriculture of a typical village in arid zone, India: part II. *Energy Convers Manag* 44:1053–1067
- Sinton J, Fridley D, Jieming L, Lewis J, Nan Z, Yanxia C (2004) China energy databook version 6.0, <http://china.lbl.gov>. LBNL-55349 Berkeley, USA, Lawrence Berkeley National Laboratory
- Spielmann M, Kägi T, Tietje O (2004) Life cycle inventories of agricultural production systems. Final report ecoinvent 2000 No. 14. Duebendorf, Switzerland, Swiss Centre for Life Cycle Inventories
- Statistisches Bundesamt (2003) Umweltökonomische Gesamtrechnungen: Material- und Energieflußrechnungen: Teil 3 Kohlendioxid; Teil 5 Schwefeldioxid, Stickoxide, Versauerungsgase. D-Statistik Fachserie 19, Reihe 5
- Statistisches Bundesamt (2004) Volkswirtschaftliche Gesamtrechnungen: Input-Output-Rechnung nach 71 Gütergruppen/Produktionsbereichen 2000. D-Statistik
- Stern DI (2004) The rise and fall of the Environmental Kuznets Curve. *World Dev* 32(8):1419–1439
- Suh S (2003) SimaPro 7 Database Manual The USA Input Output 98 library. Pré Consultants
- TERI (2006) TEDDY 2004/05: TERI energy data directory & yearbook. The Energy and Resources Institute (TERI), India
- Tobler MI, Schaerer S (2002) Environmental impacts of different cotton growing regimes. International Cotton Conference. Bremen
- van Hoof G, Schowanek D, Feijtel TCJ (2003) Comparative life cycle assessment of laundry detergent formulations in the UK - part I: environmental fingerprint of five detergent formulations in 2001. *Tenside Surfactants Deterg* 40(5):266–275
- Weidema B, Nielsen AM, Christiansen K, Norris G, Notten P, Suh S, Madsen J (2005) SimaPro 7 Database Manual Danish Input Output 99 library. Pré Consultants
- Wiegmann K (2002) Anbau und Verarbeitung von Baumwolle - Dokumentation der GEMIS-Daten. Oeko-Institut, Freiburg, Germany, pp 1–25