

## TECHNICAL ADVANCE

## Open Access

# Translation equations to compare ActiGraph GT3X and Actical accelerometers activity counts

Leon Straker<sup>1,2\*</sup> and Amity Campbell<sup>1†</sup>**Abstract**

**Background:** This study aimed to develop a translation equation to enable comparison between Actical and ActiGraph GT3X accelerometer counts recorded minute by minute.

**Methods:** Five males and five females of variable height, weight, body mass index and age participated in this investigation. Participants simultaneously wore an Actical and an ActiGraph accelerometer for two days. Conversion algorithms and  $R^2$  were calculated day by day for each subject between the omnidirectional Actical and three different ActiGraph (three-dimensional) outputs: 1) vertical direction, 2) combined vector, and 3) a custom vector. Three conversion algorithms suitable for minute/minute conversions were then calculated from the full data set.

**Results:** The vertical ActiGraph activity counts demonstrated the closest relationship with the Actical, with consistent moderate to strong conversions using the algorithm:  $y = 0.905x$ , in the day by day data ( $R^2$  range: 0.514 to 0.989 and average: 0.822) and full data set ( $R^2 = 0.865$ ).

**Conclusions:** The Actical is most sensitive to accelerations in the vertical direction, and does not closely correlate with three-dimensional ActiGraph output. Minute by minute conversions between the Actical and ActiGraph vertical component can be confidently performed between data sets and might allow further synthesis of information between studies.

**Keywords:** Accelerometry, Actical, ActiGraph, Translation equations

**Background**

Insufficient moderate-vigorous physical activity and too much sedentary behaviour are physical activity behaviours that are both recognised as significant public health issues [1,2]. A comprehensive body of research has attempted to capture physical activity behaviours to inform prevention policies, interventions and activity guidelines, as well as better understand the relationship with disease. Initially this research was hampered by reliance on self-report, which has been shown to be biased and inaccurate [3–5]. The development of activity monitors allowed an objective measure of intensity, duration and pattern of activity, which has led to a better understanding of the importance of physical activity behaviours [5,6]. For example, there is evidence that the relationship between physical activity behaviours and

adiposity is strengthened when objective monitors are used rather than questionnaires in both children [7,8] and adults [4,9]. Similarly, it has been demonstrated that using activity monitors rather than questionnaires increases the likelihood of associations being detected between physical activity and a variety of health outcomes [10].

Accelerometers have become the most accurate, feasible and widely used available activity monitor device [6,11]. Studies using a number of different accelerometers have been reported [12–17], with researchers required to weigh the differing costs, unit dimensions, technical specifications, outputs and evidence for reliability and validity when deciding which model to utilise. Given the number of available devices, it is unlikely that one device will become universally adopted [18]. Therefore comparisons/standards that apply across the various units are necessary, a notion that is becoming increasingly recognised [19].

\* Correspondence: [Straker@curtin.edu.au](mailto:Straker@curtin.edu.au)

†Equal contributors

<sup>1</sup>School of Physiotherapy and Curtin Health Innovation Research Institute, Curtin University, Perth, Australia<sup>2</sup>School of Physiotherapy, Curtin University, Perth, WA 6845, Australia

Two devices appear to be the most frequently used; the Actical (Mini Mitter Co., Inc., Bend OR) and the ActiGraph (ActiGraph, LLC, Fort Walton Beach, FL). Historically, the single plane (vertical acceleration only) ActiGraph (ACG: model 7164) was the most frequently utilised device in research and represented a major technical advancement in being much smaller ( $51 \times 41 \times 15$  mm; 43 g) than previous devices [20]. This popularity has continued, with the single plane ActiGraph utilised to collect the largest accelerometer data set recorded to date as part of the National Health and Nutritional Examination Survey (NHANES) in the US [21,22]. The Actical accelerometer is a newer and smaller accelerometer ( $28 \times 27 \times 10$  mm; 17 g) that has become widely used [2,23] with the advantage of being 'omni-directional' [24]. Whilst the specific sensitivities in resultant three-dimensions have never been published, the combined three-dimensional output provides a theoretically more comprehensive assessment of body movements and has demonstrated higher correlations with energy expenditure in adults [25] and children [26]. Comparisons of reliability and validity typically find that the multiple axis models report marginally higher validity than single plane models [23,27]. Perhaps in response to both the Actical and validity evidence, the ActiGraph has recently evolved to offer acceleration outputs in each of the three planes of movement (ACG model: GT3X) as well as the combined three-dimensional output, in a more streamlined model (dimensions:  $38 \times 37 \times 18$  mm and weight 27 g).

Methodological advancements regarding accelerometers to date have focused on validating the energy expenditure estimated by accelerometers [23,28]. However, there is growing awareness of the importance of activity in addition to energy expenditure and many research studies are now focusing on accelerometer counts [29–33]. Attempts to capture different aspects of the pattern of activity have used count thresholds, for example to define breaks in sedentary behaviour [8,32,34] or to determine total time spent performing moderate to vigorous physical activity [8]. In order to facilitate comparisons of categorised physical activity between studies attempts to quantify standard cut offs have been performed [35–37].

Given the importance of the outputs from objective measures and the popularity of both the Actical and ActiGraph devices in contemporary literature, the ability to compare information between devices has been recognised as important [5,18,19]. This includes both comparisons between reported daily data as well as the accurate determination of equivalency of thresholds for activity categories between devices. However, this synthesis of results is currently not possible, given that the Actical and ActiGraph counts are not directly comparable [18] as they are arbitrary units (counts per minute) from technically different devices. The raw data from

activity monitors is converted into an activity count over a user defined interval following some level of filtering. Therefore, the magnitude of the counts depends on the different electrical and/or mechanical characteristics of the activity monitor, along with the level of filtering, resulting in variation between brands [18,29,38]. This issue was recently addressed and a conversion algorithm for daily recordings was developed between the single plane ActiGraph and the Actical [18]. However due to a phase shift in their data that resulted in increasing discrepancies between the minute by minute conversions they were only able to provide a comparison for an average total daily accelerometer count [18]. While this is useful, it does not allow for conversions of shorter time periods which is particularly relevant, given the recognised importance of shorter bouts of activity and within day variability [30,31,33,39]. Further data is therefore required to determine whether a minute by minute conversion is feasible and to establish a conversion algorithm between the tri-axial ActiGraph and the Actical. This minute by minute conversion could also be utilised to verify equivalent activity thresholds between devices, which is critical for physical activity categorisation. Therefore, this study aimed to develop a translation equation to enable comparison between Actical and ActiGraph accelerometer counts recorded minute by minute.

## Methods

The protocol for this study was approved by the Curtin University Human Ethics Review Committee. Ten healthy adults (5 males and 5 females) provided informed consent and participated in this study. The participants were a convenience sample selected to represent both sexes and a range of ages (mean 37.5, range 26–52), heights (mean 174.5 cm, range 158–195), weights (mean 72.1 kg, range 54–104) and daily activity patterns (mainly sedentary work, mainly active work, no leisure physical activity, regular moderate/vigorous leisure activity).

Participants were provided with one Actical and ActiGraph fixed directly next to each other on an adjustable belt. Participants were instructed on the accurate positioning of the accelerometers; worn securely over the right anterior superior iliac crest, and asked to wear the monitors for two days. Participants were also required to complete a simple activity diary, where any changes to activity/unusual activities and times of any device removal/re-application were recorded.

Three different devices of each model were utilised due to the differences that have been demonstrated to exist between units. Prior to being worn by the participants, the devices were calibrated and configured for recording using the same computer. This ensured the

internal clocks were configured to precisely the same time in order to minimise phase shift between units.

### Data processing and statistical analyses

Each participant's counts per minute (cpm) data was output and graphed for visual inspection using Microsoft Excel (Microsoft Corporation inc.). Visual inspection in combination with diary information were utilised to both remove sleep and non-wear time and examine for phase shift. One participant's data was repeated following the detection of phase shift. The source of this phase shift was not resolved; however the problem did not occur in this participant's second set of data.

Scattergrams and regression equations were then calculated for each day of each participant's data using Microsoft Excel. Linear regression equations were fitted with the intercept set to zero. Three different comparisons were made: 1) between the ActiGraph X (vertical axis) component and Actical, 2) between the ActiGraph vector output and Actical, and 3) between a custom calculated vector (ActiGraph custom vector) and the Actical. Finally, all the collected data (every day/participant) were combined and overall scattergrams and regression equations were calculated and a Bland-Altman plot prepared for comparison 1).

### Results

Participants wore the accelerometers for an average of 13 hours and 48 minutes each day (standard deviation 2 hours and 30 minutes). The results of the regression equation and  $R^2$  for each participant/day (Table 1) suggest a stronger relationship between the ActiGraph X axis and Actical activity cpm ( $R^2$  range: 0.514 to 0.989 and average: 0.822) than both the ActiGraph vector ( $R^2$

range: 0.002 to 0.930 and average: 0.404) and the custom vector ( $R^2$  range: 0.241 to 0.931 and average: 0.638).

The overall  $R^2$  and scatter graphs (Figures 1, 2, 3) for the three sets of comparisons further support a stronger relationship between the ActiGraph vertical component and the Actical ( $R^2=0.865$ ) than the ActiGraph vector ( $R^2=0.382$ ), and ActiGraph custom vector ( $R^2=0.635$ ). The scattergram for the relationship between the ActiGraph vector and Actical (Figure 3) suggests that the ActiGraph vector overestimates activity count magnitude in comparison to the Actical. The count mean and standard deviation across all days for all subjects for the Actical was lowest ( $293.7 \pm 977.4$ ), followed by the ActiGraph vertical component ( $377.5 \pm 977.4$ ). The ActiGraph custom vector ( $694.1 \pm 1261$ ) and the ActiGraph vector ( $12892 \pm 29401$ ) appeared to overestimate activity compared to the Actical. Figure 4 shows a Bland-Altman plot with 95 % confidence intervals (+ 713 cpm).

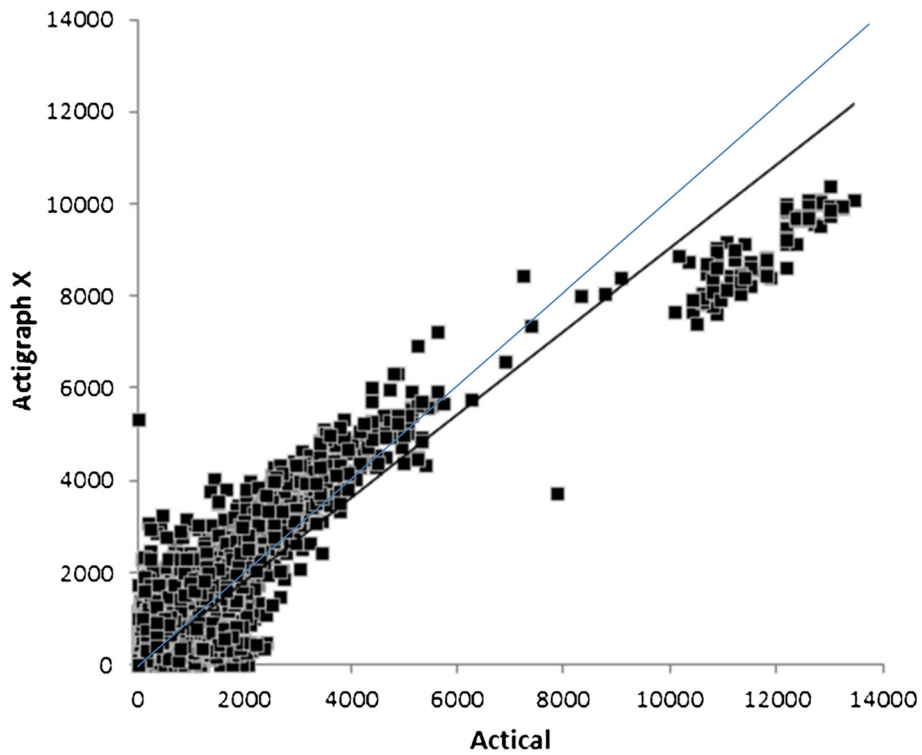
### Discussion

Translating activity data (cpm) collected with different devices has recently been recognised as an important physical activity research issue [18,19,39]. This study outlines the first ActiGraph vs Actical activity count translation equations for within day activity.

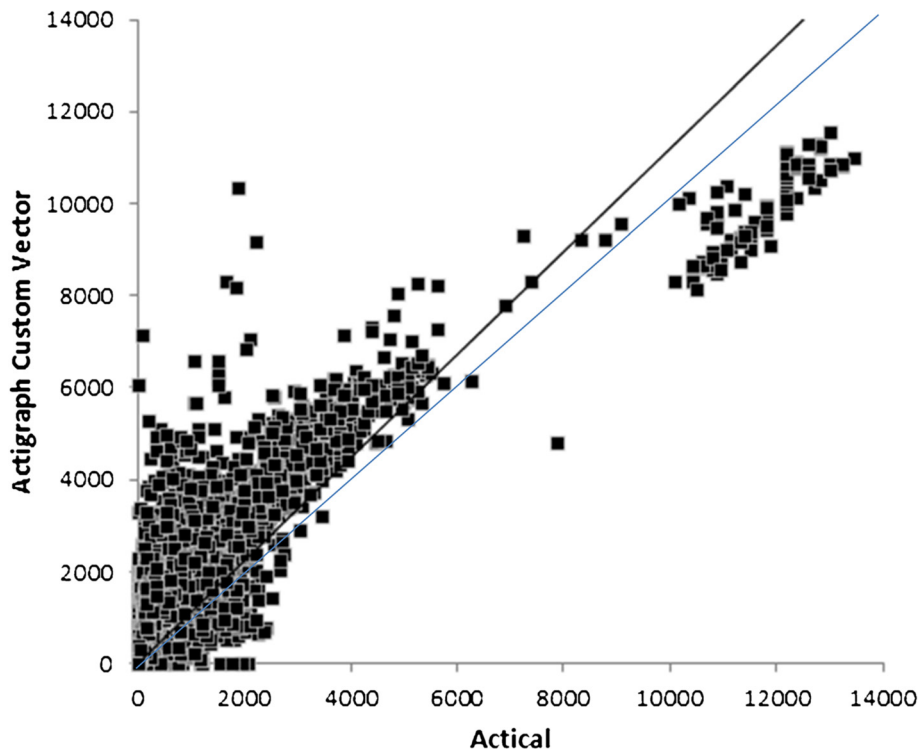
The results of this study indicate a consistent, strong relationship between the ActiGraph vertical component and the Actical counts per minute, as indicated by the high day by day and overall squared correlations. Eslinger and Tremblay [38] compared average counts per minute over 7 minute trials between single plane ActiGraphs and Acticals following the mechanical generation of known accelerations. We utilised their reported data, albeit from only 7 data points, to calculate a comparable regression

**Table 1 Relationships between three ActiGraph counts per minute outputs and Actical counts per minute output, for each subject each day**

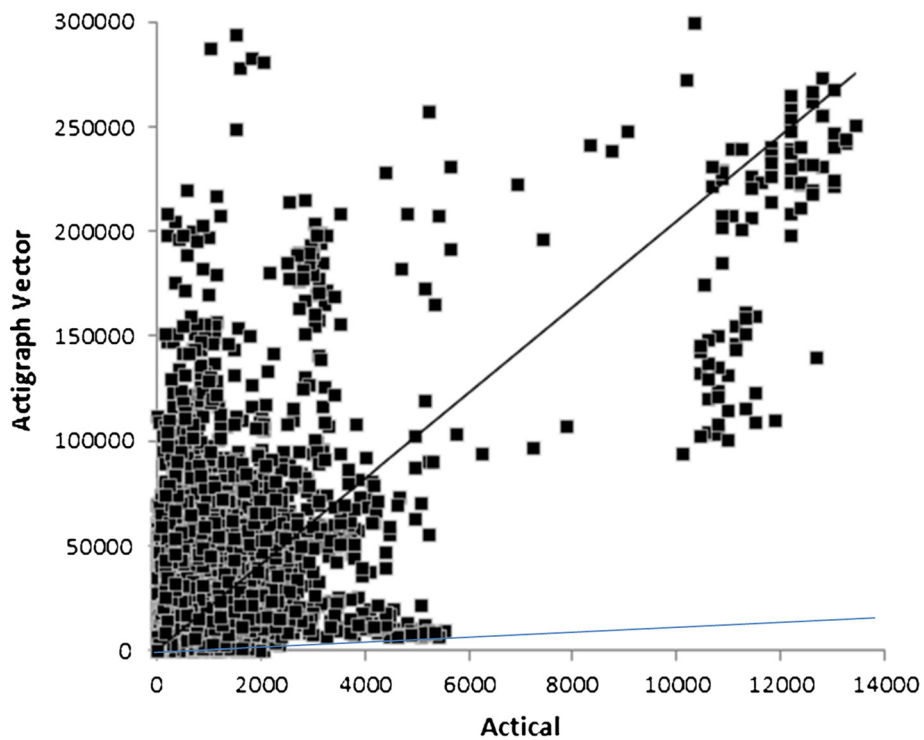
	ActiGraph X axis and Actical				ActiGraph vector and Actical				ActiGraph custom vector and Actical			
	Day 1		Day 2		Day 1		Day 2		Day 1		Day 2	
	Regression Equation	$R^2$	Regression Equation	$R^2$	Regression Equation	$R^2$	Regression Equation	$R^2$	Regression Equation	$R^2$	Regression Equation	$R^2$
Subject 1	y = 1.250x	0.868	y = 1.250x	0.884	y = 15.878x	0.383	y = 15.951x	0.490	y = 1.619x	0.806	y = 0.943x	0.791
Subject 2	y = 1.214x	0.585	y = 1.214x	0.514	y = 36.523x	0.194	y = 32.16x	0.190	y = 2.022x	0.305	y = 1.529x	0.249
Subject 3	y = 1.506x	0.641	y = 1.506x	0.797	y = 60.46x	0.561	y = 35.488x	0.109	y = 2.513x	0.516	y = 1.98x	0.544
Subject 4	y = 1.267x	0.777	y = 1.267x	0.850	y = 31.594x	0.251	y = 51.379x	0.771	y = 1.788x	0.517	y = 1.784x	0.772
Subject 5	y = 1.174x	0.838	y = 1.145x	0.935	y = 54.667x	0.408	y = 38.325x	0.241	y = 1.953x	0.580	y = 2.112x	0.684
Subject 6	y = 1.281x	0.813	y = 1.232x	0.954	y = 31.494x	0.398	y = 26.574x	0.564	y = 1.833x	0.653	y = 1.614x	0.858
Subject 7	y = 1.139x	0.855	y = 1.117x	0.793	y = 36.731x	0.242	y = 32.263x	0.054	y = 1.188x	0.508	y = 1.852x	0.241
Subject 8	y = 0.804x	0.981	y = 0.793x	0.966	y = 21.608x	0.841	y = 20.647x	0.687	y = 0.925x	0.915	y = 0.896x	0.833
Subject 9	y = 1.145x	0.947	y = 1.106x	0.989	y = 5.752x	0.930	y = 4.727x	0.002	y = 1.392x	0.892	y = 1.330x	0.931
Subject10	y = 1.095x	0.827	y = 0.844x	0.622	y = 19.354x	0.527	y = 17.427x	0.244	y = 1.316x	0.609	y = 1.198x	0.563



**Figure 1** Scattergram of ActiGraph vertical component and Actual cpm. Dark line shows regression line:  $y = 0.905x$  with  $R^2 = 0.865$ , faint line shows line of identity.



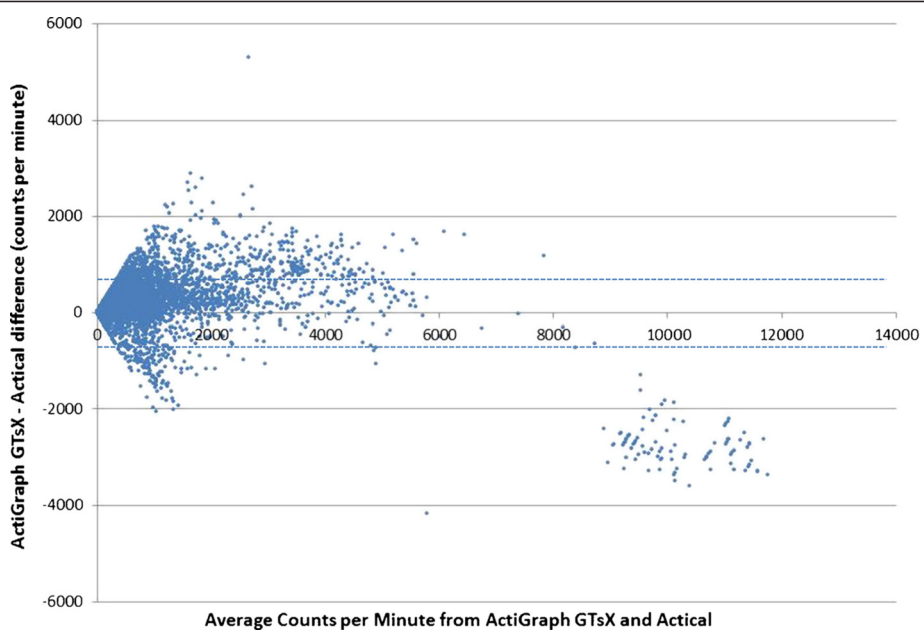
**Figure 2** Scattergram of ActiGraph custom vector and Actual cpm. Dark line shows regression line :  $y = 1.229x$  with  $R^2 = 0.635$ , faint line shows line of identity.



**Figure 3** Scattergram of ActiGraph vector and Actical cpm. Dark line shows regression line:  $y = 20.493x$  with  $R^2 = 0.382$  (note changed Y axis scale), faint line shows line of identity.

equation ( $y = 0.922x$ ,  $R^2 = 0.824$ ). The similarity between these two equations developed from very different sets of data (mechanical vs biological) supports the validity of the equations reported here. The only prior

study comparing biological acceleration between single plane ActiGraphs and Acticals has limited application as it only allowed data conversions between total daily recordings ( $y = 38.5 + 0.947x$ ) and was limited to



**Figure 4** Bland-Altman plot showing differences between ActiGraph vertical component and Actical with 95 % confidence interval.

the original uniaxial model of the ActiGraph (Paul et al 2007).

The relationship between the ActiGraph vector and the Actical was the weakest overall and may have been affected by the overestimation of the contribution of movement in the z axis; with the vector calculation used by ActiGraph *cubing* the z component [ $\sqrt{(X^2 + Y^2 + Z^3)}$ ]. Therefore, the custom ActiGraph vector calculation we developed used the more traditional 'resultant vector' calculation [ $\sqrt{(X^2 + Y^2 + Z^2)}$ ], and while this did result in a stronger relationship with the Actical, it was still weaker than the ActiGraph vertical relationship. This supports previous research suggesting the Actical is most sensitive to movements in the vertical plane [13].

The scattergrams between the activity monitors suggest a largely linear relationship between the Actical and the ActiGraph vertical component (Figure 1) and custom vector (Figure 2). However, the ActiGraph appears to be more sensitive to activity below around 8,000 cpm, whilst the Actical appears to be more sensitive to activity above 8,000 cpm. Interestingly, the Actical/ActiGraph vertical scattergram (Figure 1) appears to include very few outliers, whereas Actical/Actigraph custom vector scattergram (Figure 2) shows considerably more outlier data points where either the ActiGraph over-estimated or the Actical under-estimated activity. This also suggests the Actical is less sensitive to movements in the non-vertical planes.

It has been suggested that the most meaningful contribution of activity monitors is the recording of intermittent, light-intensity activities such as walking and incidental physical activity which are typically less memorable and likely associated with inaccuracies when using self-report measures [30,39]. This requires the establishment of suitable count thresholds in order to categorise activity. For example, 100 counts per minute is a common threshold used for sedentary behaviour in papers that utilised the uniaxial ActiGraph [31,33,40]. Similarly, Wong et al [37] recommended 100 counts per minute as a threshold for sedentary behaviour using the Actical device. Whilst these two values are numerically the same, they do not represent the same amount of activity due to the abovementioned, known differences between devices [18,29,38]. However, using the regression equation presented here, thresholds can now be accurately established between devices. For example 100 counts recorded with the ActiGraph vertical component is equivalent to 91 counts recorded with the Actical. Alternatively, 100 counts recorded with the Actical is equivalent to 110 counts recorded with the ActiGraph vertical component, or 81 counts recorded from the ActiGraph custom vector. Given earlier and broader use of the ActiGraph, we recommend Actical data be processed with activity thresholds translated to match ActiGraph thresholds. However the sensitivity of accelerometer results to

corrections based on the equations reported here are likely to be fairly small given the sensitivity and specificity evidence around a sedentary threshold reported by Wong et al [37].

A limitation of the current study was the small amount of data collected in the 6,000-8,000 cpm range and the use of a linear equation. However, the inclusion of a range of people in regards to gender, age, height, weight and activity levels and collection of data over a wide range of free living occupational and non-occupational activities rather than just treadmill or other laboratory tasks can be considered strengths of this study and highlights the applicability of the presented equations.

## Conclusions

The regression equations developed in this investigation allow the synthesis of data and activity thresholds between studies utilising the Actical and ActiGraph GT3X activity monitor devices. Given the popularity of these two models for the acquisition of large data sets such as: 2503 New Zealanders (ActiGraph), [41], 6329 Americans (ActiGraph) [42] and, 1608 Canadians (Actical) [2], the ability to compare between studies should facilitate a more comprehensive understanding of the relationship between physical activity and disease.

## Acknowledgements

The authors would like to acknowledge all the participants involved in this study and Paul Davey for identifying the unusual Actigraph vector equation. This study did not receive any financial support.

## Competing of interest

There were no competing interests associated with this study.

## Authors' contributions

AC completed the ethics application, data collection, data quality inspection and analysis. LS designed this project, assisted with data collection quality inspection and analysis. Both authors were involved with results interpretation and manuscript preparation. Both authors read and approved the final manuscript.

Received: 9 September 2011 Accepted: 20 April 2012

Published: 20 April 2012

## References

1. Troiano RP, Macera CA, Ballard-Barbash R: **Be physically active each day. How can we know?** *J Nutr* 2001, **131**(2S-1):451S-460S.
2. Colley RC, et al: **Physical activity of Canadian adults: accelerometer results from the 2007 to 2009 Canadian Health Measures Survey.** *Health Rep* 2011, **22**(1):7-14.
3. Paul DR, et al: **Validation of a food frequency questionnaire by direct measurement of habitual ad libitum food intake.** *Am J Epidemiol* 2005, **162**(8):806-14.
4. Harris TJ, et al: **A comparison of questionnaire, accelerometer, and pedometer: measures in older people.** *Med Sci Sports Exerc* 2009, **41**(7):1392-402.
5. Cliff DP, Reilly JJ, Okely AD: **Methodological considerations in using accelerometers to assess habitual physical activity in children aged 0-5 years.** *J Sci Med Sport* 2009, **12**(5):557-67.
6. Troiano RP, Freedson PS: **Promises and pitfalls of emerging measures of physical activity and the environment.** *Am J Prev Med* 2010, **38**(6):682-3.

7. Rowlands AV, Ingledew DK, Eston RG: **The effect of type of physical activity measure on the relationship between body fatness and habitual physical activity in children: a meta-analysis.** *Ann Hum Biol* 2000, **27**(5):479–97.
8. Ness AR, et al: **Objectively measured physical activity and fat mass in a large cohort of children.** *PLoS Med* 2007, **4**(3):e97.
9. Bassett DR Jr, Cureton AL, Ainsworth BE: **Measurement of daily walking distance-questionnaire versus pedometer.** *Med Sci Sports Exerc* 2000, **32**(5):1018–23.
10. Janz KF: **Physical activity in epidemiology: moving from questionnaire to objective measurement.** *Br J Sports Med* 2006, **40**(3):191–2.
11. Esliger DW, Tremblay MS: **[Establishing a profile of physical activity and inactivity: the next generation].** *Appl Physiol Nutr Metab* 2007, **32**(Suppl 2F):S217–30.
12. Rowlands AV, et al: **Validation of the RT3 triaxial accelerometer for the assessment of physical activity.** *Med Sci Sports Exerc* 2004, **36**(3):518–24.
13. Heil DP: **Predicting activity energy expenditure using the Actical activity monitor.** *Res Q Exerc Sport* 2006, **77**(1):64–80.
14. Shapiro D, Goldstein LB: **Wrist actigraph measures of physical activity level and ambulatory blood pressure in healthy elderly persons.** *Psychophysiology* 1998, **35**(3):305–12.
15. Finn KJ, Specker B: **Comparison of Actiwatch activity monitor and Children's Activity Rating Scale in children.** *Med Sci Sports Exerc* 2000, **32**(10):1794–7.
16. Riddoch CJ, et al: **Physical activity levels and patterns of 9- and 15-yr-old European children.** *Med Sci Sports Exerc* 2004, **36**(1):86–92.
17. Thompson AM, et al: **Physical activity and body mass index in grade 3, 7, and 11 Nova Scotia students.** *Med Sci Sports Exerc* 2005, **37**(11):1902–8.
18. Paul DR, et al: **Comparison of two different physical activity monitors.** *BMC Med Res Methodol* 2007, **7**:26.
19. Feito Y, et al: **Effects of body mass index and tilt angle on output of two wearable activity monitors.** *Med Sci Sports Exerc* 2011, **43**(5):861–6.
20. Tryon WW, Williams R: **Fully proportional actigraphy: A new instrument.** *Behaviour research methods* 1996, **28**(3):392–403.
21. Hawkins MS, et al: **Objectively measured physical activity of USA adults by sex, age, and racial/ethnic groups: a cross-sectional study.** *Int J Behav Nutr Phys Act* 2009, **6**:31.
22. Troiano RP: **A timely meeting: objective measurement of physical activity.** *Med Sci Sports Exerc* 2005, **37**(11 Suppl):S487–9.
23. Chen KY, Bassett DR: **The technology of accelerometry-based activity monitors: Current and future.** *Medicine and Science in Sports and Exercise* 2005, **37**(11 Suppl):S490–S500.
24. Rand D, Jeng JS: **How active are people with Stroke? Use of accelerometers to assess physical activity.** *Stroke* 2009, **40**:163–168.
25. Hendelman D, et al: **Validity of accelerometry for the assessment of moderate intensity physical activity in the field.** *Med Sci Sports Exerc* 2000, **32**(9 Suppl):S442–9.
26. Eston RG, Rowlands AV, Ingledew DK: **Validity of heart rate, pedometry, and accelerometry for predicting the energy cost of children's activities.** *J Appl Physiol* 1998, **84**(1):362–71.
27. Trost SG, McIver KL, Pate RR: **Conducting accelerometer-based activity assessments in field-based research.** *Medicine and Science in Sports and Exercise* 2005, **37**(11):S531–S543.
28. Howe CA, Staudenmayer JW, Freedson PS: **Accelerometer prediction of energy expenditure: vector magnitude versus vertical axis.** *Med Sci Sports Exerc* 2009, **41**(12):2199–206.
29. Freedson P, Pober D, Janz KF: **Calibration of accelerometer output for children.** *Medicine and Science in Sports and Exercise* 2005, **37**(11):S523.
30. Oliver M, et al: **Utility of accelerometer thresholds for classifying sitting in office workers.** *Prev Med* 2010, **51**(5):357–60.
31. Healy GN, et al: **Breaks in sedentary time: beneficial associations with metabolic risk.** *Diabetes Care* 2008, **31**(4):661–6.
32. Healy GN, et al: **Objectively measured sedentary time, physical activity, and metabolic risk: the Australian Diabetes, Obesity and Lifestyle Study (AusDiab).** *Diabetes Care* 2008, **31**(2):369–71.
33. Hagstromer M, et al: **Levels and patterns of objectively assessed physical activity—a comparison between Sweden and the United States.** *Am J Epidemiol* 2010, **171**(10):1055–64.
34. Healy GN, et al: **Objectively measured light-intensity physical activity is independently associated with 2-h plasma glucose.** *Diabetes Care* 2007, **30**(6):1384–9.
35. Jago R, et al: **Decision boundaries and receiver operating characteristic curves: new methods for determining accelerometer cutpoints.** *J Sports Sci* 2007, **25**(8):937–44.
36. Colley RC, Tremblay MS: **Moderate and vigorous physical activity intensity cut-points for the Actical accelerometer.** *J Sports Sci* 2011, **29**(8):783–9.
37. Wong SL, et al: **Actical accelerometer sedentary activity thresholds for adults.** *J Phys Act Health* 2011, **8**:587–594.
38. Esliger DW, Tremblay MS: **Technical reliability assessment of three accelerometer models in a mechanical setup.** *Med Sci Sports Exerc* 2006, **38**(12):2173–81.
39. Esliger DW, Tremblay MS: **Physical activity and inactivity profiling: the next generation.** *Can J Public Health* 2007, **98**(Suppl 2):S195–207.
40. Matthews CE, et al: **Amount of time spent in sedentary behaviors in the United States, 2003–2004.** *Am J Epidemiol* 2008, **167**(7):875–81.
41. The University of Auckland, A National Survey of Children and Young People's Physical Activity and Dietary Behaviours in New Zealand: 2008/2009. Clinical Trials Research Unit, Editor 2010: Auckland, New Zealand.
42. Troiano RP, et al: **Physical activity in the United States measured by accelerometer.** *Med Sci Sports Exerc* 2008, **40**(1):181–8.

doi:10.1186/1471-2288-12-54

**Cite this article as:** Straker and Campbell: Translation equations to compare ActiGraph GT3X and Actical accelerometers activity counts. *BMC Medical Research Methodology* 2012 **12**:54.

**Submit your next manuscript to BioMed Central and take full advantage of:**

- **Convenient online submission**
- **Thorough peer review**
- **No space constraints or color figure charges**
- **Immediate publication on acceptance**
- **Inclusion in PubMed, CAS, Scopus and Google Scholar**
- **Research which is freely available for redistribution**

Submit your manuscript at  
www.biomedcentral.com/submit

