



LONDON
METROPOLITAN
UNIVERSITY
THE CASS ART, ARCHITECTURE, DESIGN

FOR THE SHELTER SHARKS

PROJECTS:

- Andrada Luca 1
- Jihane Haddioui 2
- Junxue Piao 3
- Akshay Patel 4
- Josephine Kawiche 5
- Katrina Vilcane 6
- Lottie Conway-Plumb 7
- Olga Ivanova 8
- Raphael Angelina 9
- Valerija Kamolina 10
- Yash Gehi 11
- Darine Chekkouri 12
- Shams Al Saffar 13
- Chawki Karam 14



INTRODUCTION



This booklet documents the work that Architecture Studio 3 has done to explore the use of a shipping container to provide a shelter for canoeing club 'The Sharks' in Hayes. All projects aim to contribute to communities wider than canoeists and the canal, and to providing sites that can contribute to strategic urban development. The work shows how a shipping container can provide a flexible, low cost, robust and easily transportable module. It is hoped that Students will continue to work with the canoeing club to develop and deliver a shelter for the Sharks in Hayes.

Architecture Studio 3
Canoeing with the Sharks
November 2015

Project These projects consider the Grand Union canal, which passes through Hayes town centre to the south of the High Street and adjacent to the future Crossrail station, housing estates and industrial areas.

Architecture Studio 3 has been working with The Sharks, a canoe club operating in the wider area, which has ambitions to establish a local hub in Hayes. The studio met with Neal Underwood, Club Development Officer, and his colleague Rob in autumn 2015. Together, the students and Sharks representatives went kayaking along the canal; past recently closed factories, housing developments and surprising moments of wilderness with herons and blackberries galore.

Following the canoeing trip, Studio 3 explored design options for a shelter where the boats could be stored, and groups of children could meet for paddling sessions on the canal. Various locations were tested with many centering around the area of Shackle's Dock, a canal inlet adjacent to the Austin Estate in the town centre.

Students developed individual projects based on the volume of a single standard shipping container; a tried and tested storage method for kayaks for which the Sharks have obtained funding. All of the proposals offer more than mere storage; some invite dog owners to meet, others link into the national long-distance rambling network or offer new views of the lush canal-side flora and fauna.

Alongside working with the Sharks, the projects were also discussed with Hayes Partnership Chair David Brough, who introduced the students to local history and current developments in the town. Subsequently, students presented their proposals to David Brough and Neal Underwood as well as local MP (and Shadow Chancellor) John McDonnell, and Thames 21 representative Billy Coburn.

Background The Cass Faculty of Art Architecture and Design has been working in Hayes since 2012, when we were asked by John McDonnell MP to propose and establish art and architecture projects in the area. Since then, Students from Architecture, Fine Art, Spatial Design and Urban Planning, Jewellery and Silversmithing and Photography have all worked with people and sites in Hayes.

All Cass student work has taken local groups as Clients, and worked closely with them to produce projects that are self sustaining and self cultivating. Clients have included local housing estate Residents, Young People Not in Education, Employment or Training, and Volunteer Play Ambassadors. Local ownership of projects, such as the Austin Estate Sewing Club, has meant that residents have developed projects above and beyond student involvement. This has been the aim for all projects.

Cass Architecture Studio 3 has worked in and around Hayes town centre since 2013, when they worked with the Austin Housing Estate and ran events to encourage community gardening. In 2014 they worked with Hillingdon Play Association and developed proposals for the estate, and in 2015 the Studio focussed on High Street infill sites. This publication shows how this year the Studio is exploring the industrial fringes of Hayes. The studio is particularly interested in the imminent arrival of Crossrail, and how it will impact upon the urban fabric and life of the area.

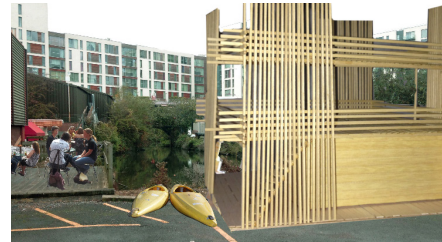
CONTENTS

SHELTER FOR THE SHARKS



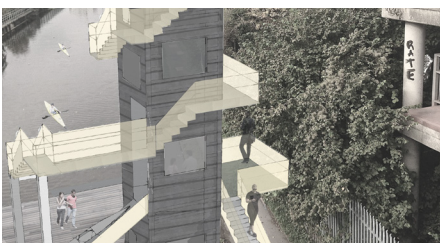
p.1 **Andrada Luca** **Walking and canoeing**

The canoe hub marks the entrance to the sheltered canoeing area, it opens up to provide a large deck overlooking the canal.



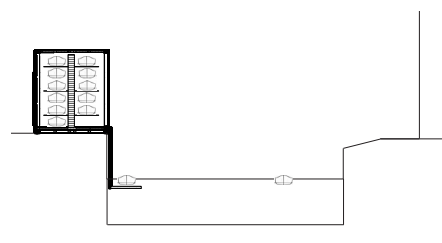
p.8 **Olga Ivanova** **Growing community**

The canoe hub provides three floors for the Sharks and for events, and has potential to grow with help from the community.



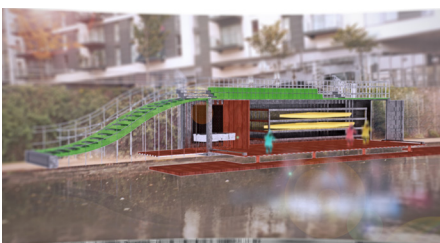
p.2 **Jihane Haddioui** **Viewing tower**

The vertical canoe hub at Bulls Bridge is accessed from both the high level pedestrian ramp and the canal.



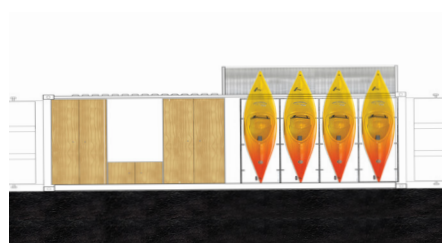
p.9 **Raphael Angelina** **Deployable hub**

The canoe hub opens up to lower canoes safely into the water. This provides secure storage and easy access.



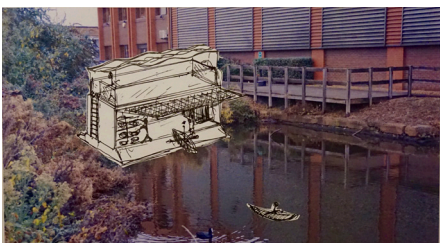
p.3 **Junxue Piao** **Seating hub**

The canoe hub provides seating with clear views onto the canal inviting cafes and restaurants to open around it.



p.10 **Valerija Kamolina** **Boats and dogs**

The canoe hub invites canalside walkers and their dogs to pause, by offering a dog facilities.



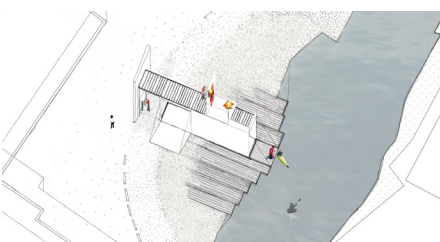
p.4 **Akshay Patel** **Meeting hub**

The hub provides a public rooftop area, with direct access to the towpath and a destination for runners along the canal.



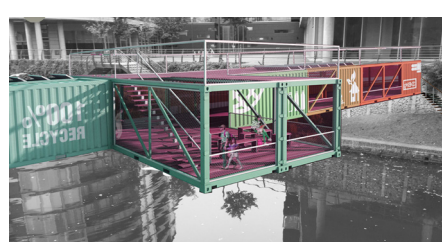
p.11 **Yash Gehi** **Canoeing bridge**

The canoe hub provides a bridge connection between Tesco and the housing area across the canal.



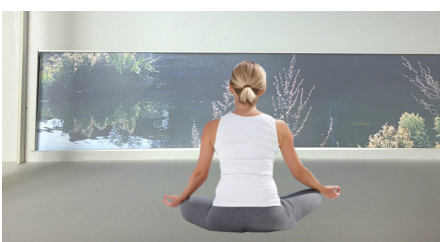
p.5 **Josephine Kawiche** **Extendable community hub**

The canoe hub diverts the cycle and pedestrian routes into the Dock, and can grow to provide community facilities.



p.12 **Darine Chekkouri** **Container bridge**

The Canoe Hub is integrated into a new pedestrian bridge. The container bridge offers a series of activities.



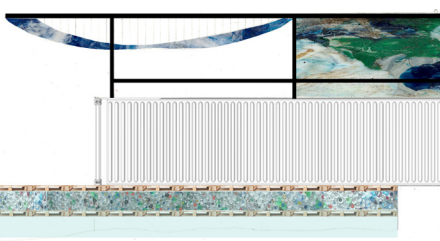
p.6 **Katrina Vilcane** **Retreat**

The canoe hub provides areas for retreat and meditation with views focused at water level in the Dock.



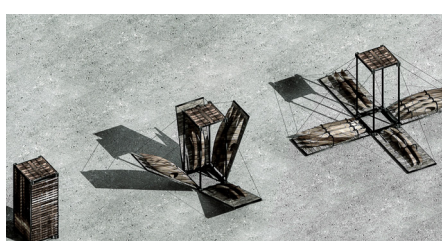
p.13 **Shams Al Saffar** **Beacon**

The canoe hub provides a landmark visible from busy routes that invites people along the towpath, also observation points.



p.7 **Lottie Conway-Plumb** **“Upcycling”**

The canoe hub addresses the problem of littering constructively by recycling local materials from its surroundings.

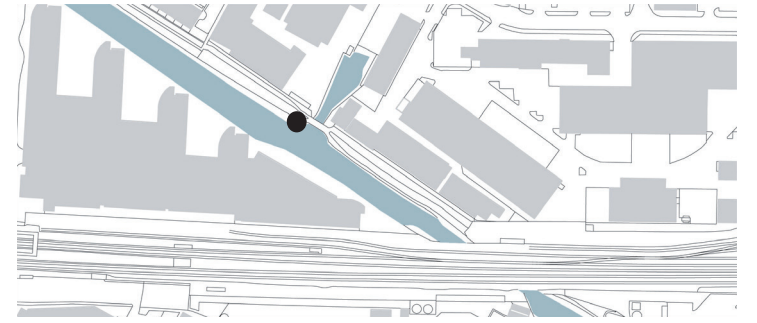


p.14 **Chawki Karam** **Canoe hoist**

The vertical canoe hub lowers canoes into the dock to enable disabled access and provides a platform for activities in addition to the canoeing

WALKING AND CANOEING ANDRADA LUCA

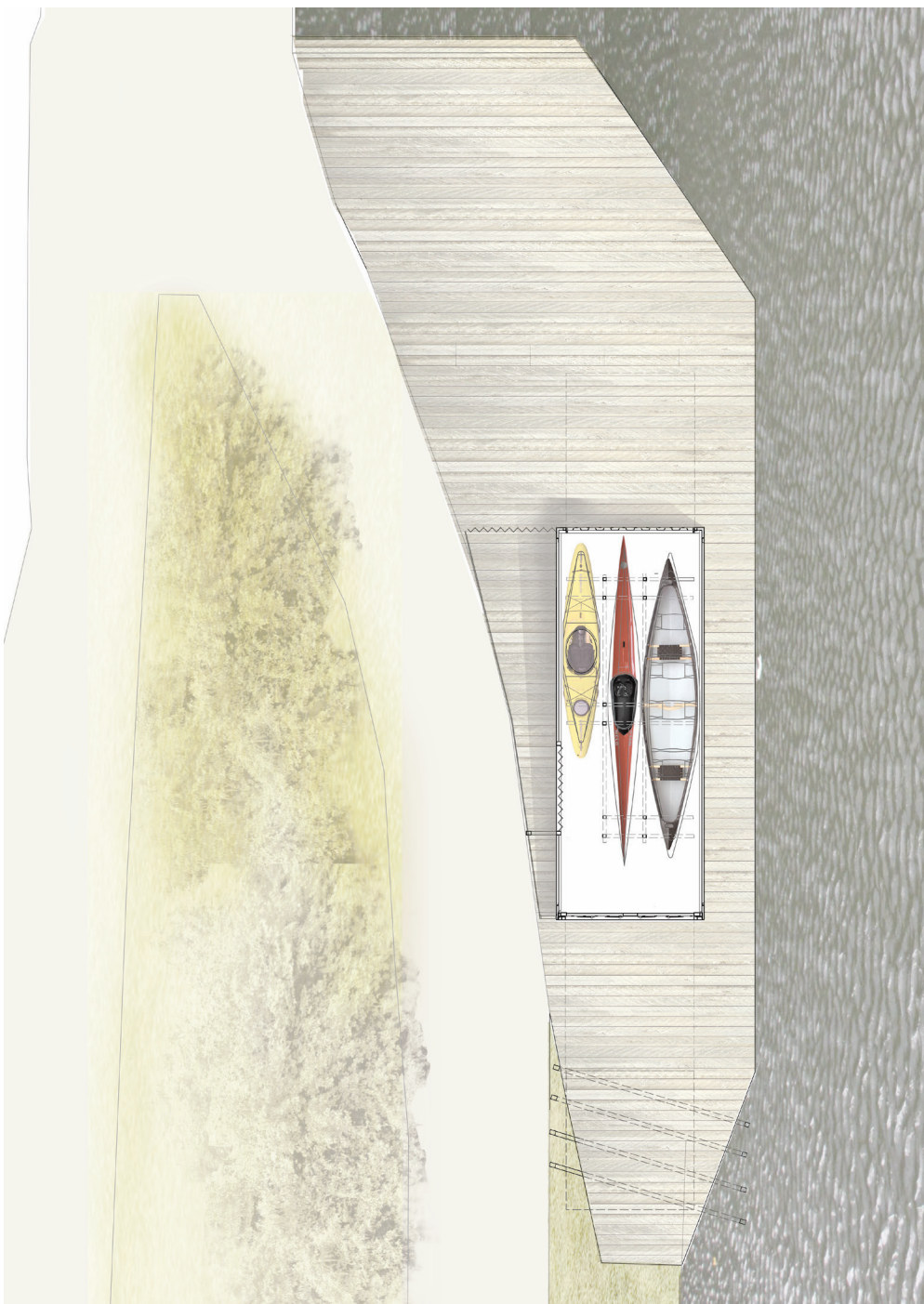
The new Canoe Hub is situated in front of Shackles Dock, visible from the Highpoint Village and Station Road Bridge. The location is carefully chosen as a destination along the Grand Union Canal walk, as well as an entrance to the safe canoeing area of Shackles Dock. It consists of a safe storage for canoes, when closed, and a gathering place on a large timber deck when opening up during activities.



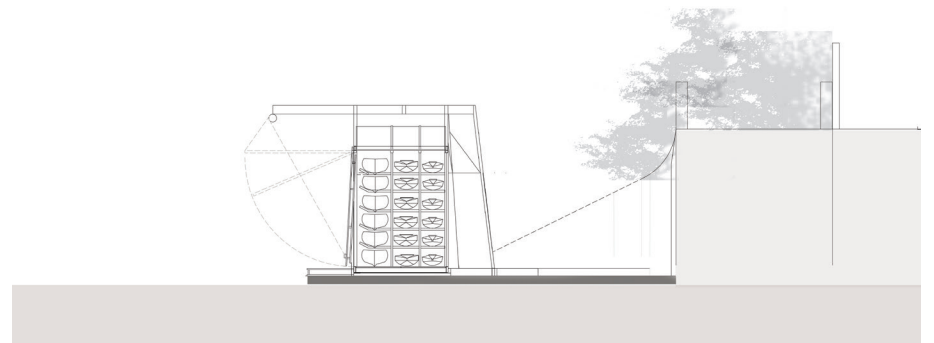
View from the hub along the towpath towards the town centre



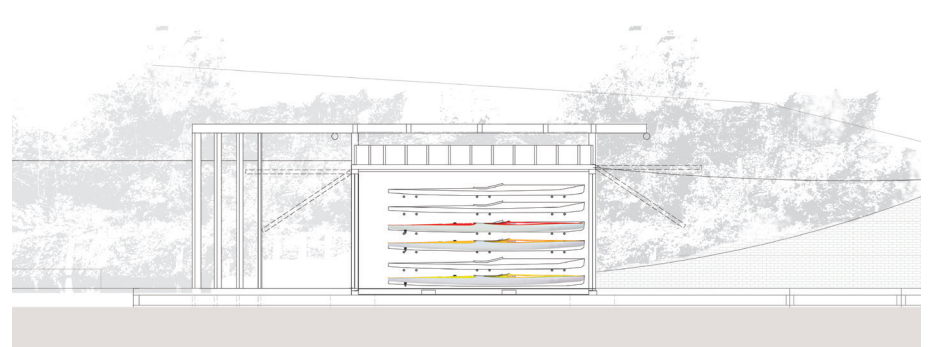
View from Station Road bridge, which connects the station to the town centre, towards the proposal



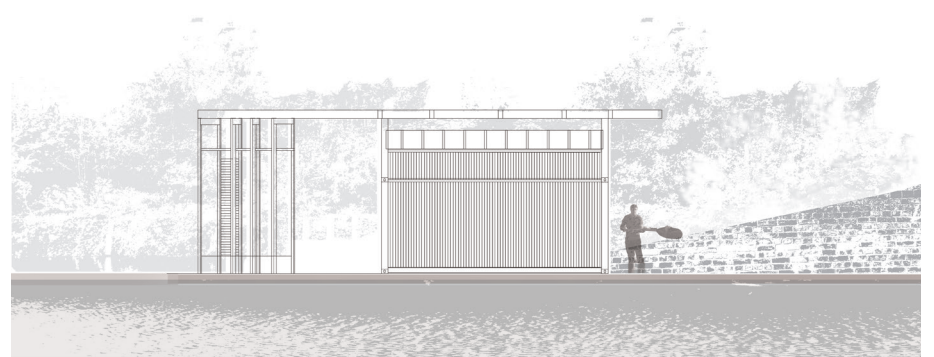
Hub plan on the new floating platform on the canal



Section showing the kayaks and canoes in storage



Elevation of the open hub

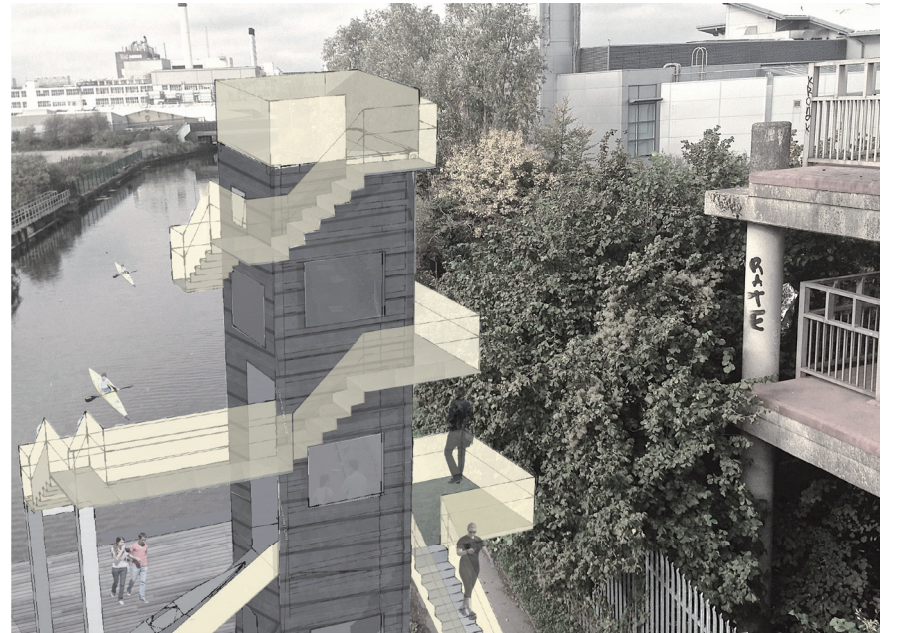
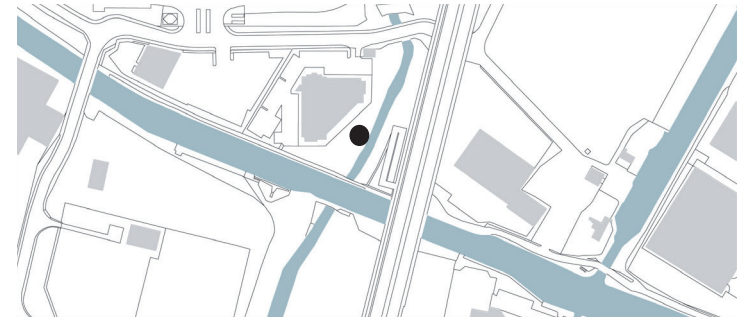


Elevation of the closed hub

JIHANE HADDIQUI

VIEWING TOWER

The Canoeing Hub is made of a 12m long container placed vertically in the water and close proximity to Bulls Bridge. This becomes not just a storage for canoes, but also landmark for Hayes, visible from far, also allowing different views into and onto the water and the surrounding area from the staircase, which wraps around the new Hub.

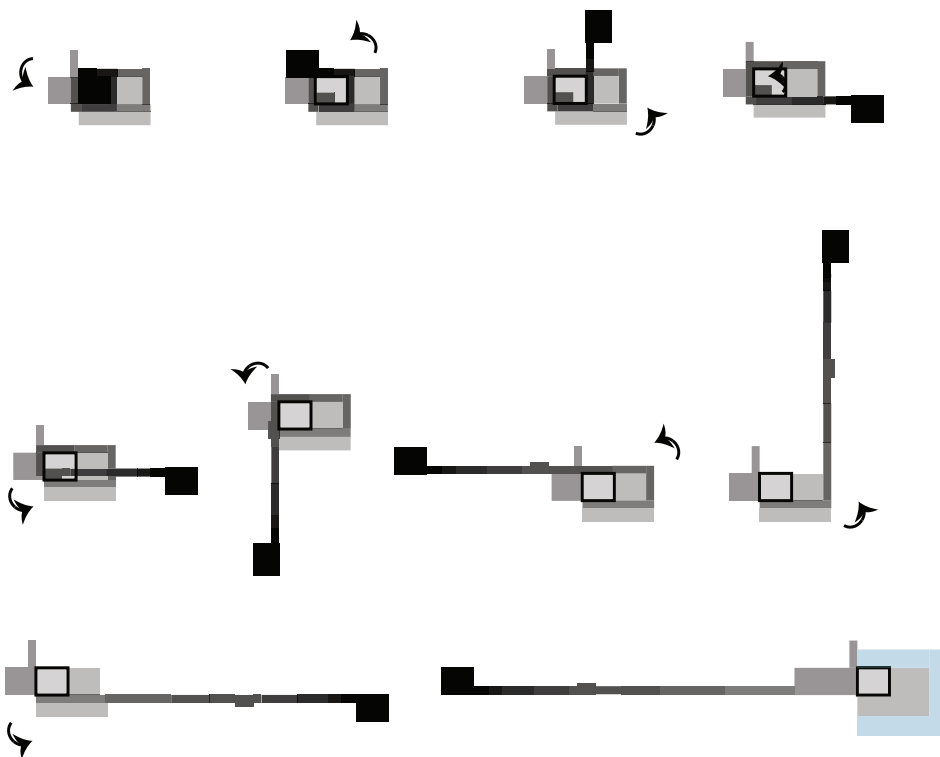


The walkways encircling the hub offer new views of the canal

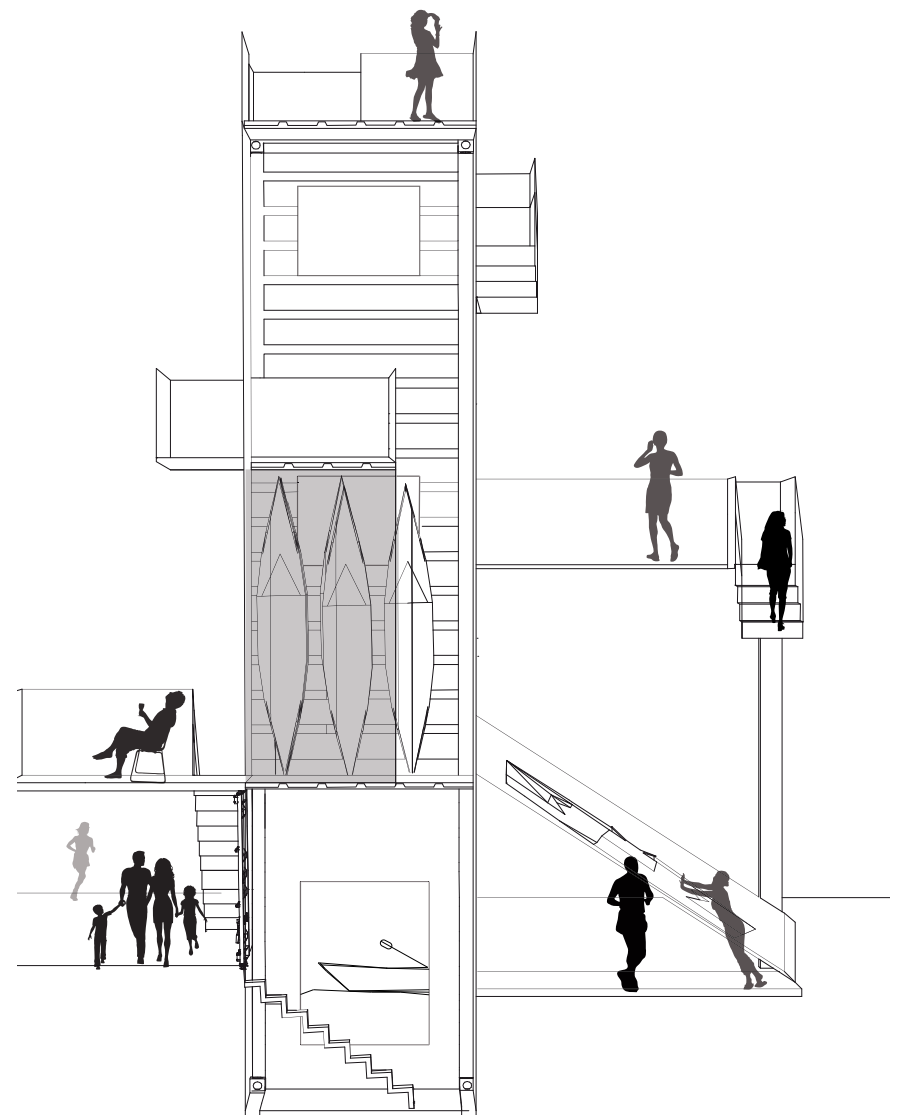


BULLS BRIDGE, HAYES, 1930/2015

Historic images of the canal in Hayes, and Bulls Bridge



The walkways wrap around and up the hub, with platforms at various levels

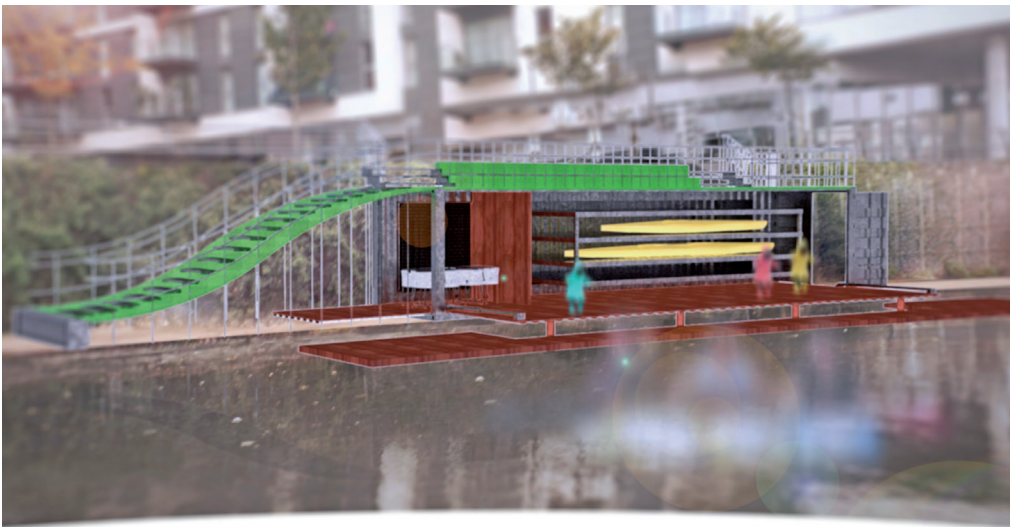
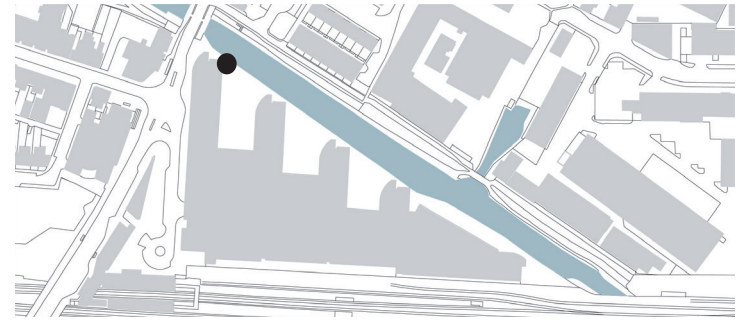


Section showing the vertical kayak storage and viewing platforms

SEATING HUB

The Canoe Hub is located between the Station and the High Street, at the residential development Highpoint Village, canal side and adds new life to the square. With direct access to the water it can become an attractive and busy part of Hayes close to the station, also attracting cafés and restaurants to establish here. The proposal provides new seating with a view onto the canal and the canoeing activities and safe storage of the canoeing equipment when closed.

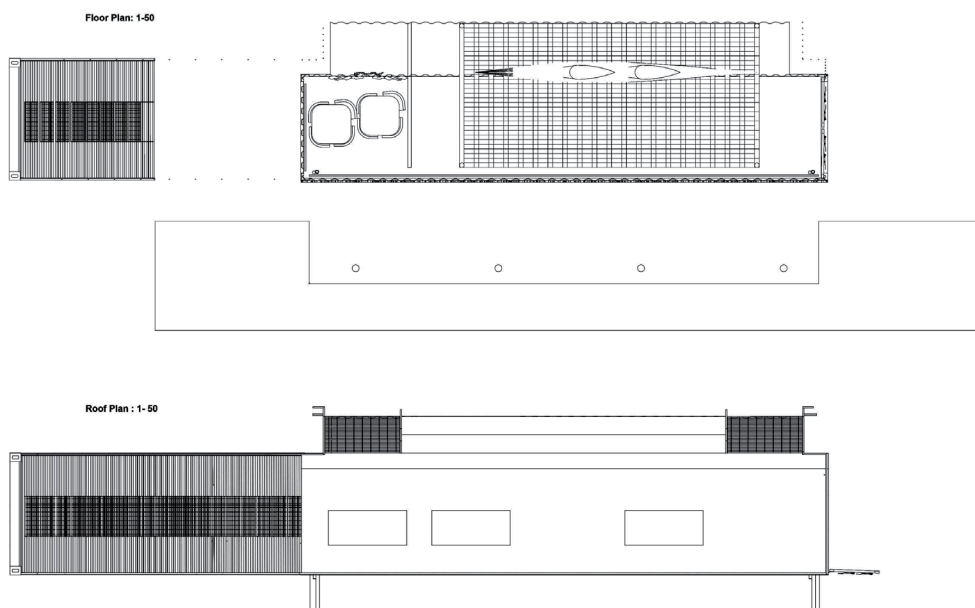
JUNXUE PIAO



View of the hub from the tow path



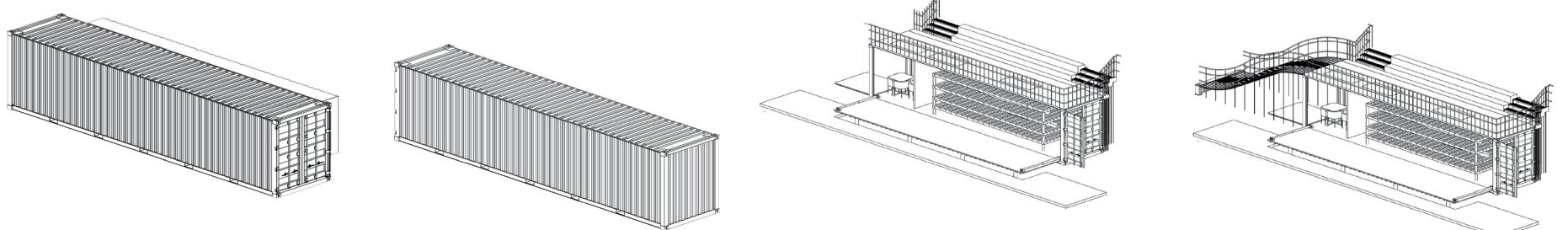
Section showing how the hub links the new 'Plaza' with the canal



Plans of the proposal at canal and Plaza level



View of the hub from the Station Road bridge

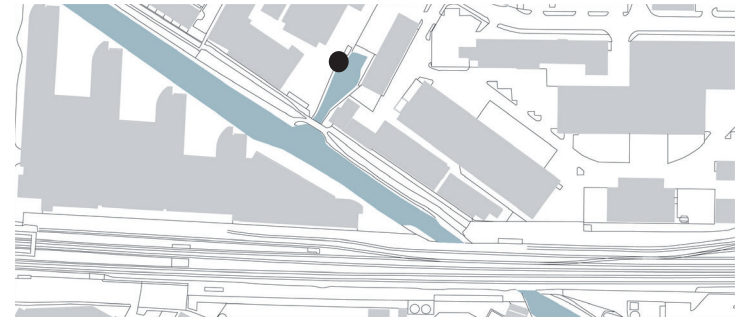


A series of adaptations and additions transform a simple container into the hub

AKSHAY PATEL

The canoe storage container at Shackles Dock provides a public rooftop area with outdoor gym facilities. As part of this proposal a new direct access to Shackles Dock from the towpath is suggested, which gives sports people a destination at the canal.

MEETING HUB



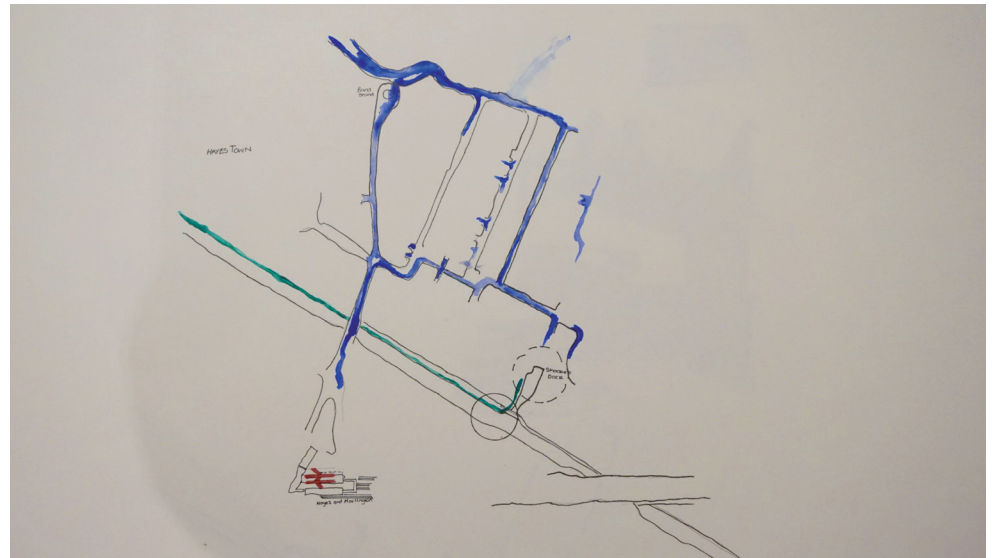
Studio 3 explores the canal at Hayes by kayak and canoe



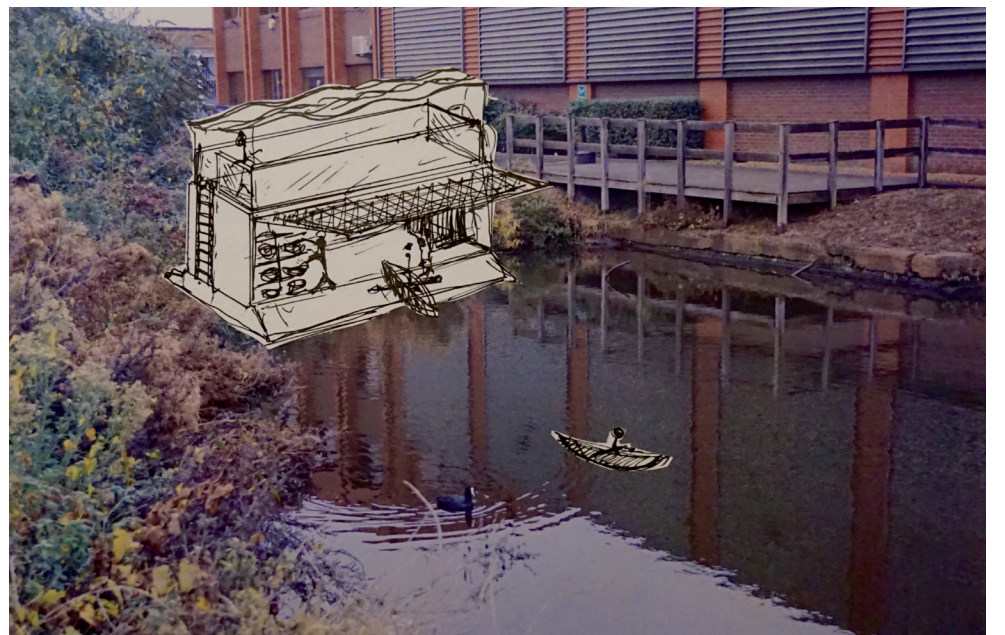
Studio 3 explores the canal at Hayes by kayak and canoe



Collage; the hub along the towpath offers runners and walkers a place to meet and stretch



The hub links both residential areas and the high street

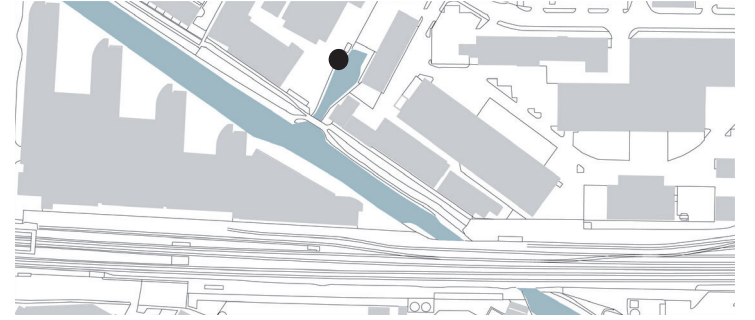


Sketch of the hub on the canal edge

EXTENDABLE COMMUNITY HUB

Part of the proposal is the strategic diversion of the canal cycle and pedestrian routes into the site of Shackles Dock. The new leisure Hub grows incrementally into a community centre, supporting canoeing, cycle and other activities through a very flexible scheme.

JOSEPHINE KAWICHE



Shackles Dock canal inlet

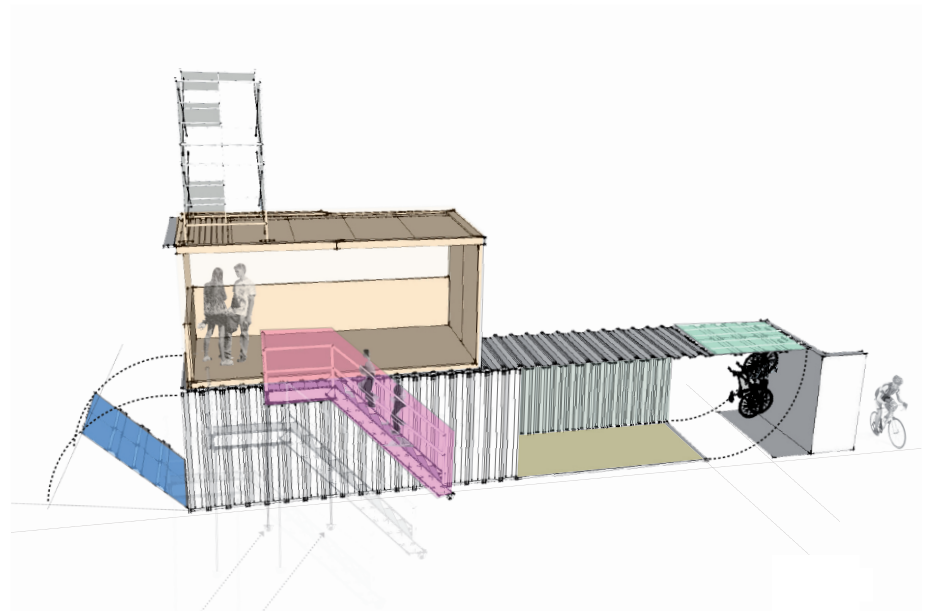
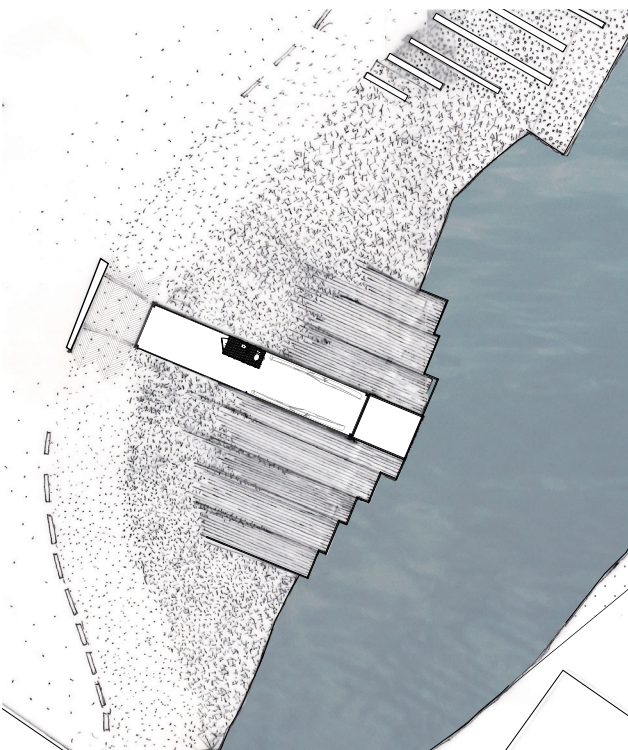
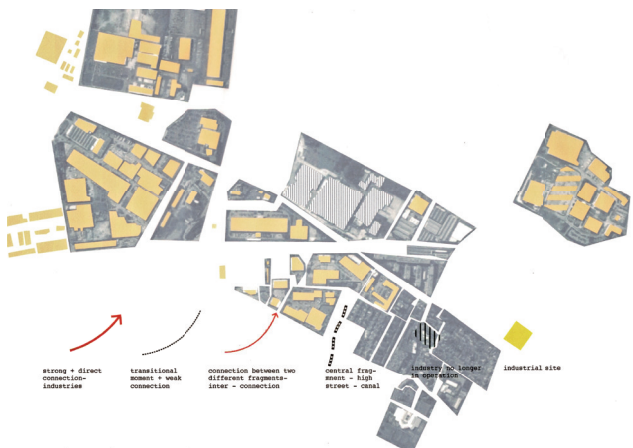
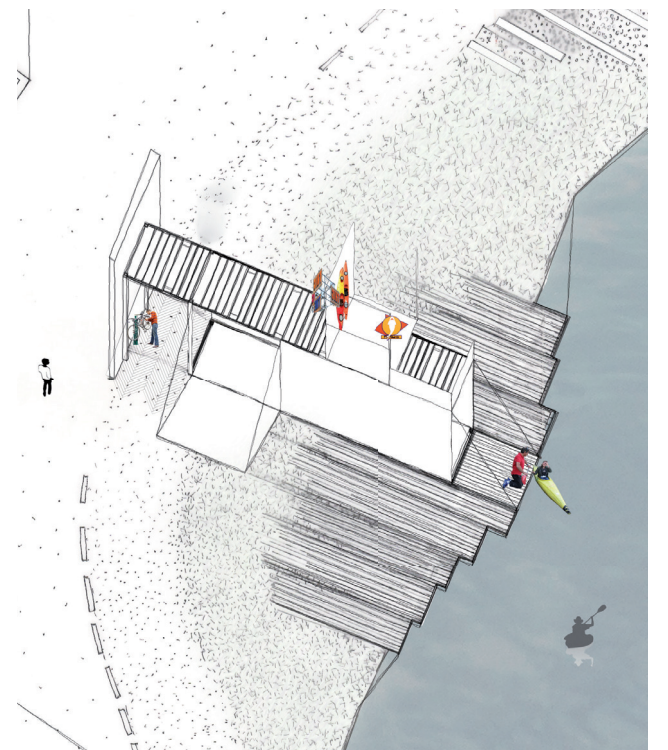
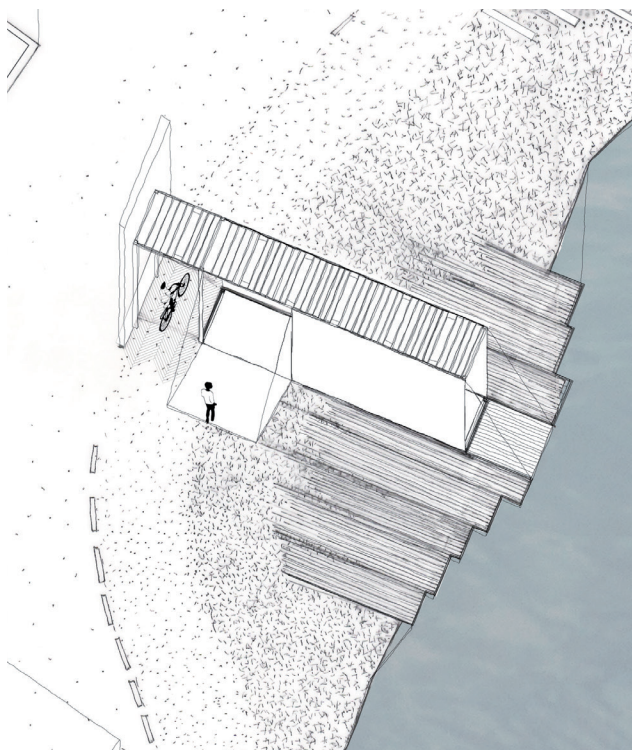


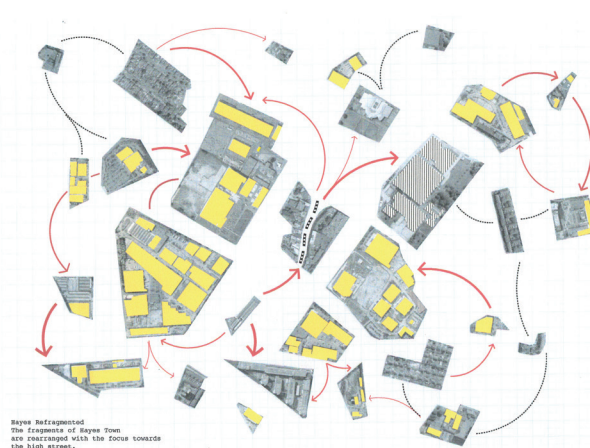
Diagram of the different levels and uses of the hub



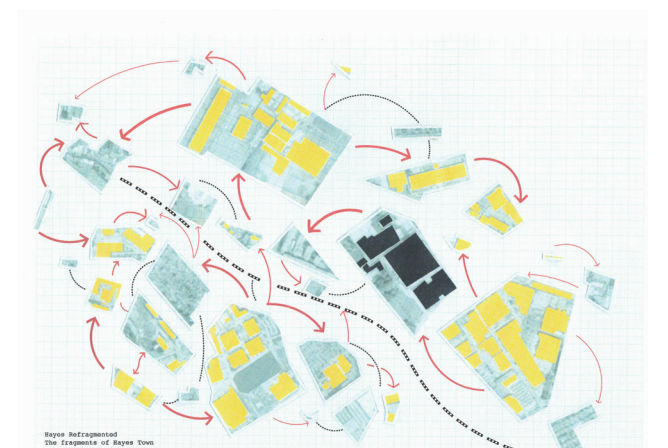
The hub can grow over time as kayaking becomes more popular



Collages exploring how Hayes is experienced, and potential links and new connections



Hayes Refragmented
The fragments of Hayes Town are reorganised with the focus towards the high street.

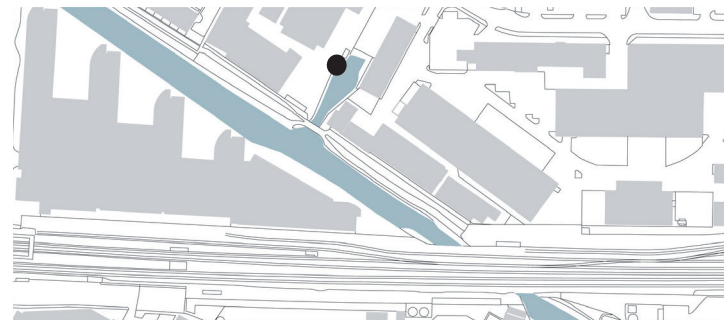


Hayes Refragmented
The fragments of Hayes Town are reorganised with the focus towards the canal.

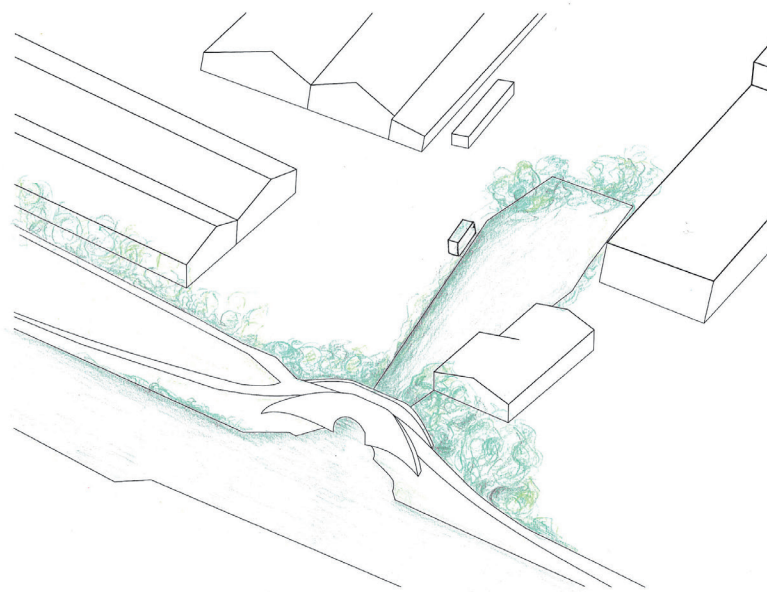
KATRINA VILCANE

RETREAT

The new Canoe Hub is situated at the Shackles Dock. It offers safe storage when the Club is not operating, and at opening times a space for "retreat" and meditation. Views out are focused onto the natural beauty of the Dock.



View of Shackles Dock from a kayak



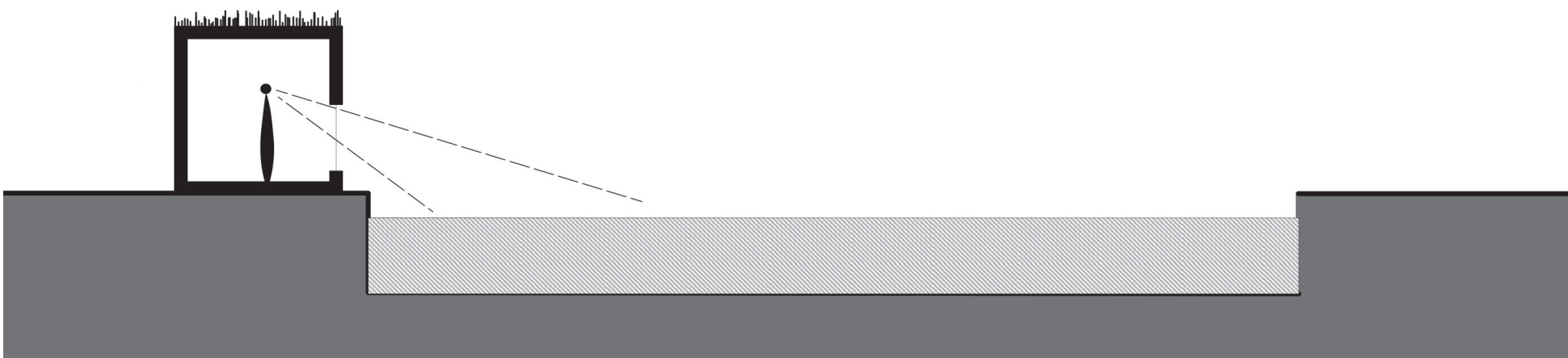
The Shackles Dock inlet is surrounded by abundant vegetation



The retreat offers low-level views of the wildlife of the inlet



The retreat offers low-level views of the wildlife of the inlet

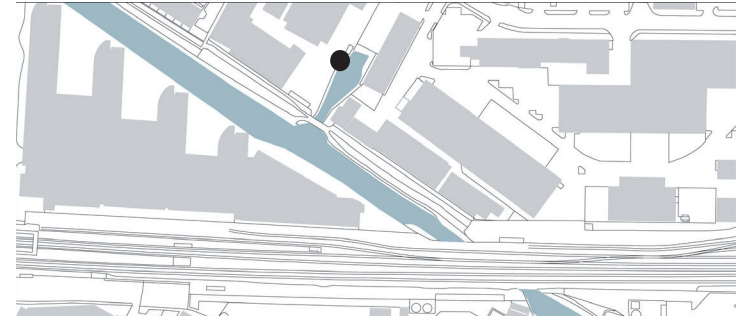


The openings are set low to frame the wildlife

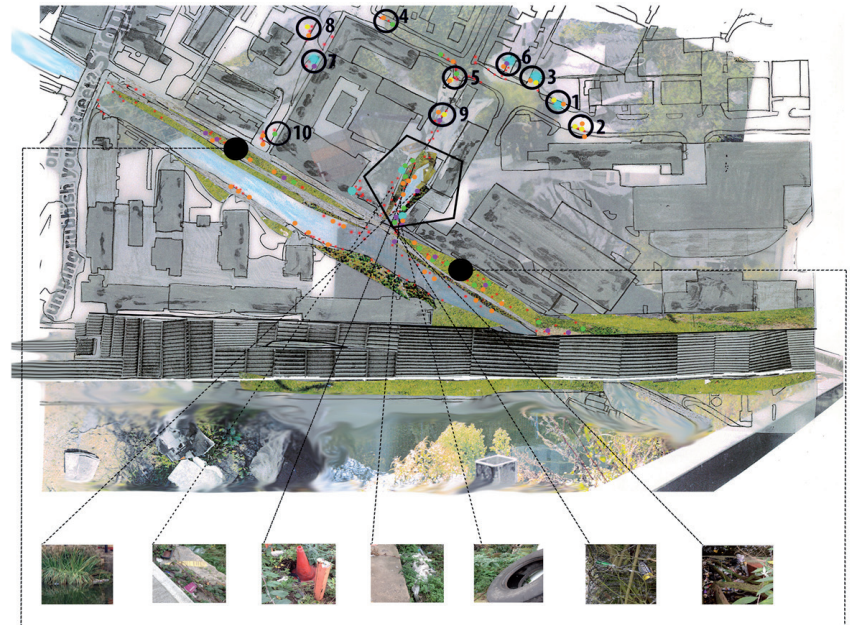
“UPCYCLING”

The project at Shackles Dock aims to create a storage space for the local kayaking club, which addresses the problem of littering along the Grand Union Canal constructively. The design uses repurposed, reused or recycled materials sourced from its surroundings, to create a canoe hub which raises local awareness, hopefully proving change for the area.

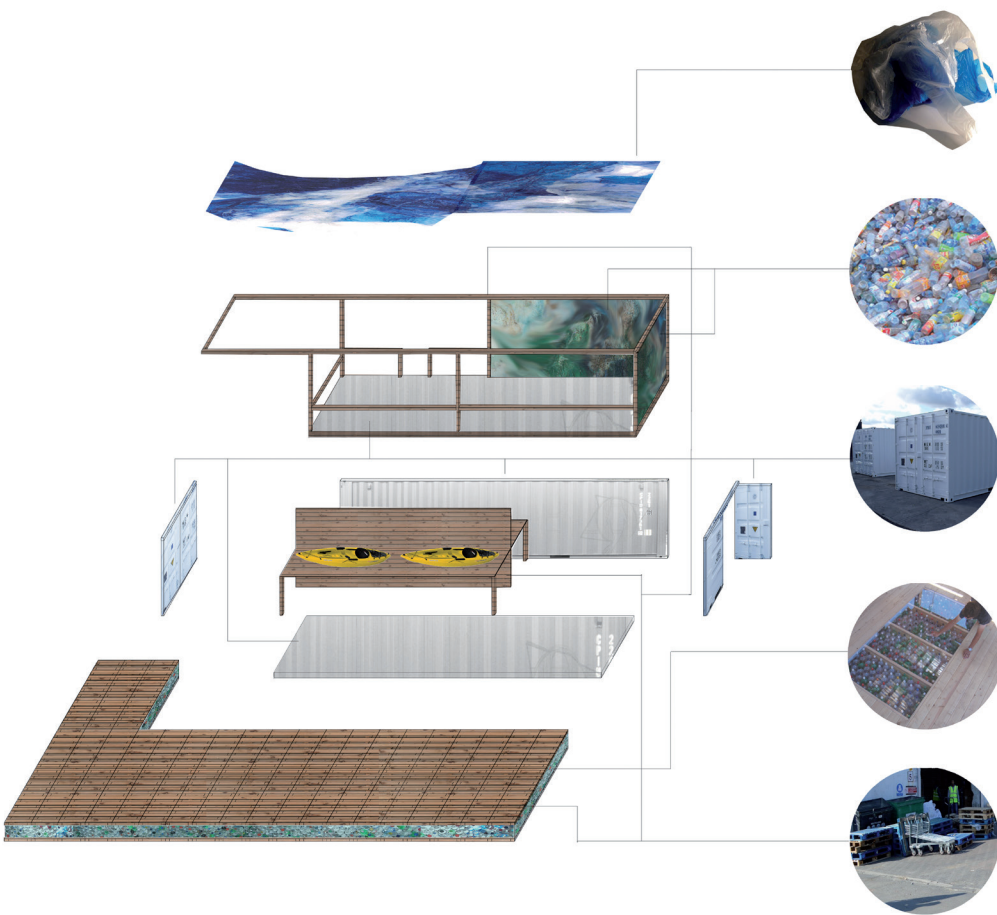
LOTTIE CONWAY PLUMB



The Shackles Dock canal is surrounded by lush greenery - and rubbish



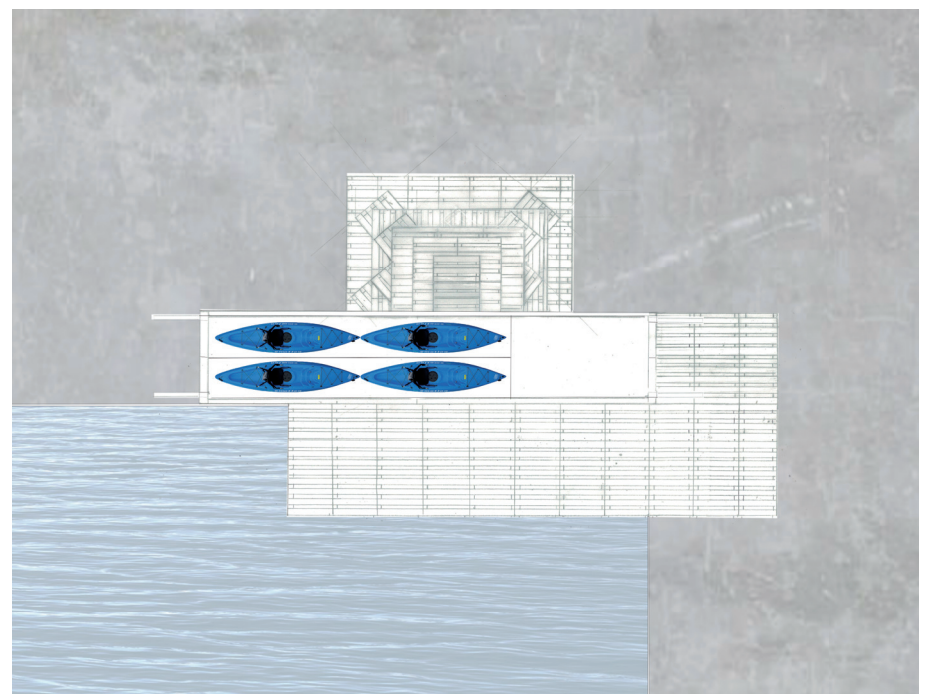
Dumped rubbish can be found at various locations surrounding the dock



The hub combines a floating platform, kayak storage, and a sheltered viewing deck



Elevation of the hub, which is partially built from recycled materials

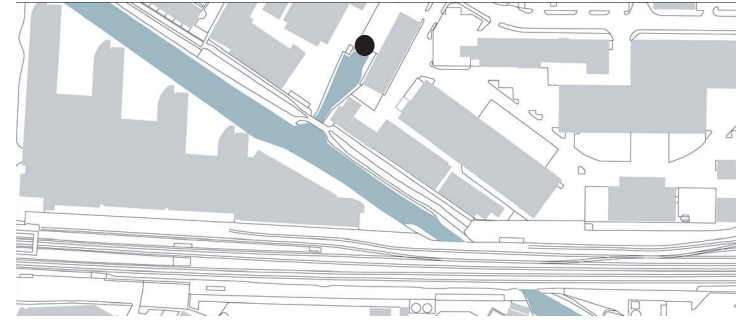


Plan of the hub and the floating platform

OLGA IVANOVA

The canoe hub offers different activities on three different floors to enliven the area of Shackles Dock and complementing the activities of The Sharks with catering and event facilities. The project is made of a simple timber structure, which could grow over time with the help of the local community.

GROWING COMMUNITY



View into Shackles Dock from the canal inlet



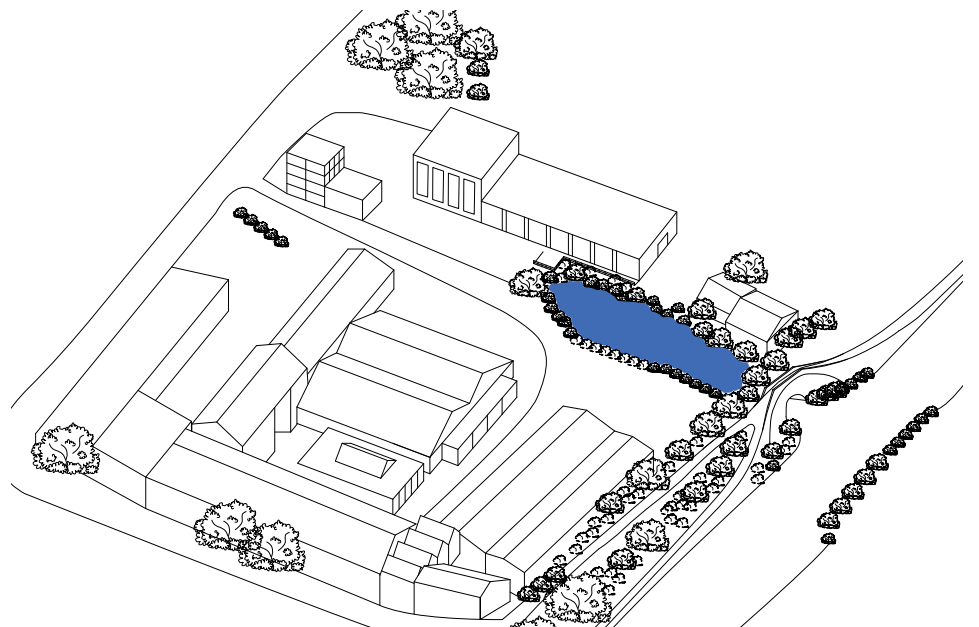
View out of Shackles Dock



Kajaks approach the hub from the canal inlet



The hub looks out over the canal inlet

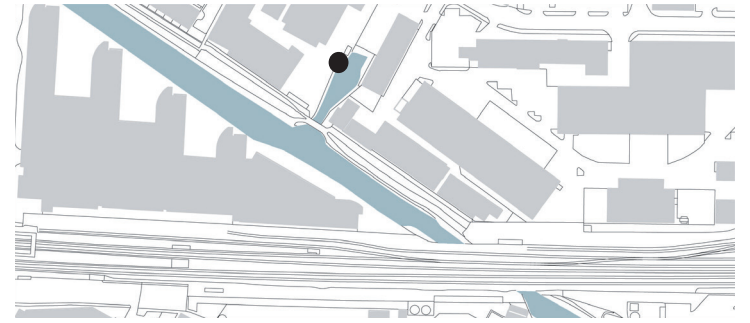


Plan Axonometric of Shackles Dock

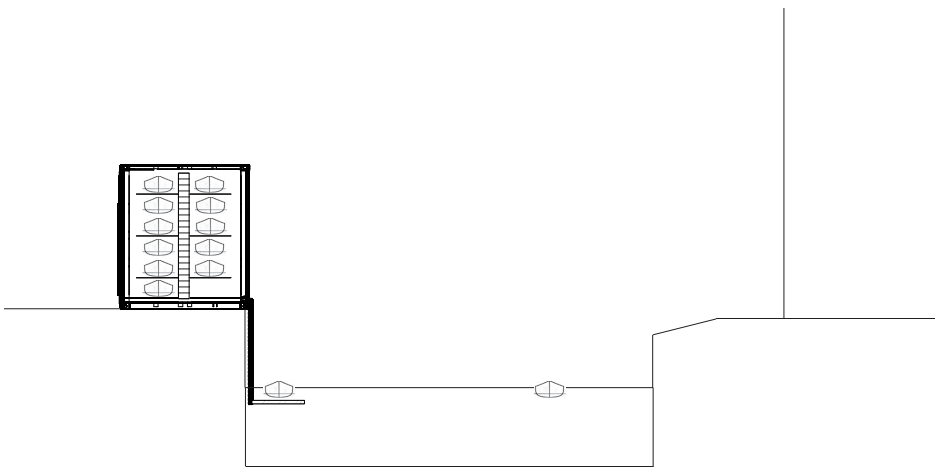
DEPLOYABLE HUB

The Container Hub is a pragmatic proposal to provide cost efficient safe storage for The Sharks. The location at the quiet Shackles Dock has been chosen for safe learning for beginners. The area is accessible by car for easy delivery.

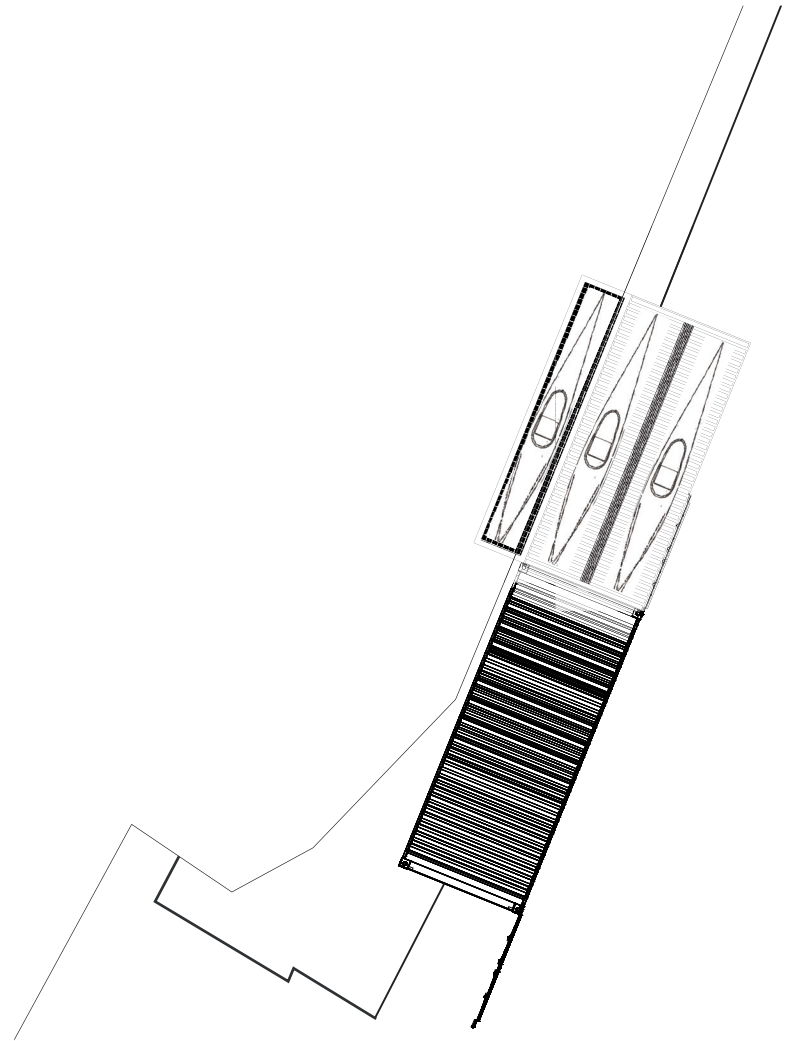
RAPHAEL ANGELINA



The bridge separates the inlet from the proper canal



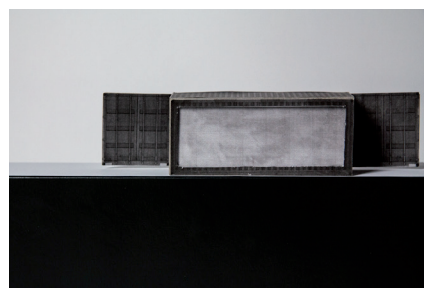
Section through the hub



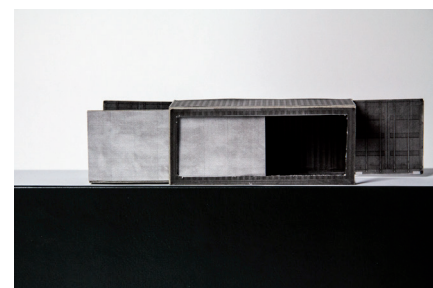
Plan of the hub set adjacent to the inlet



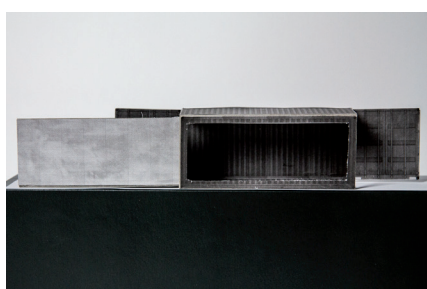
1.closed container



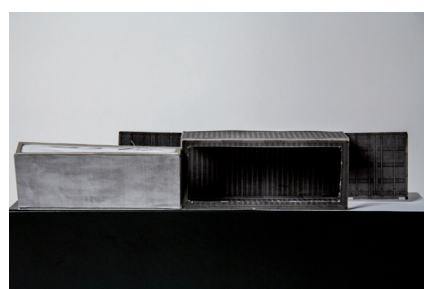
2.doors open



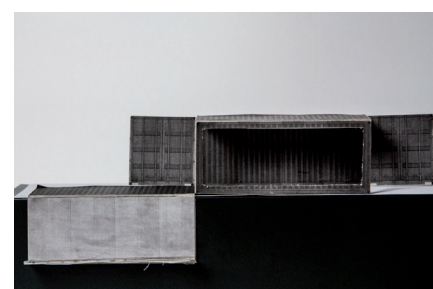
3.pulling racks



4.racks out



5.platform going down



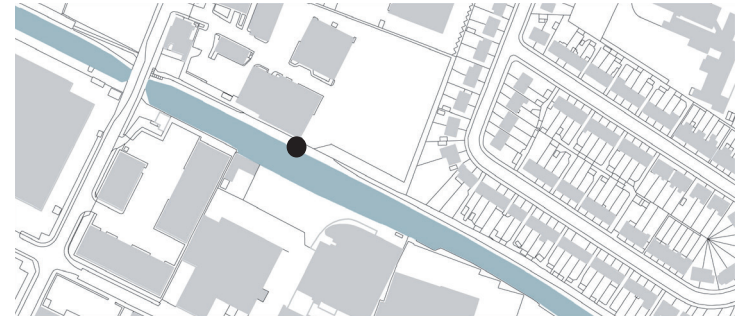
6.platform on canal level

Model photographs showing how the hub 'unfolds' to let the kajaks into the water

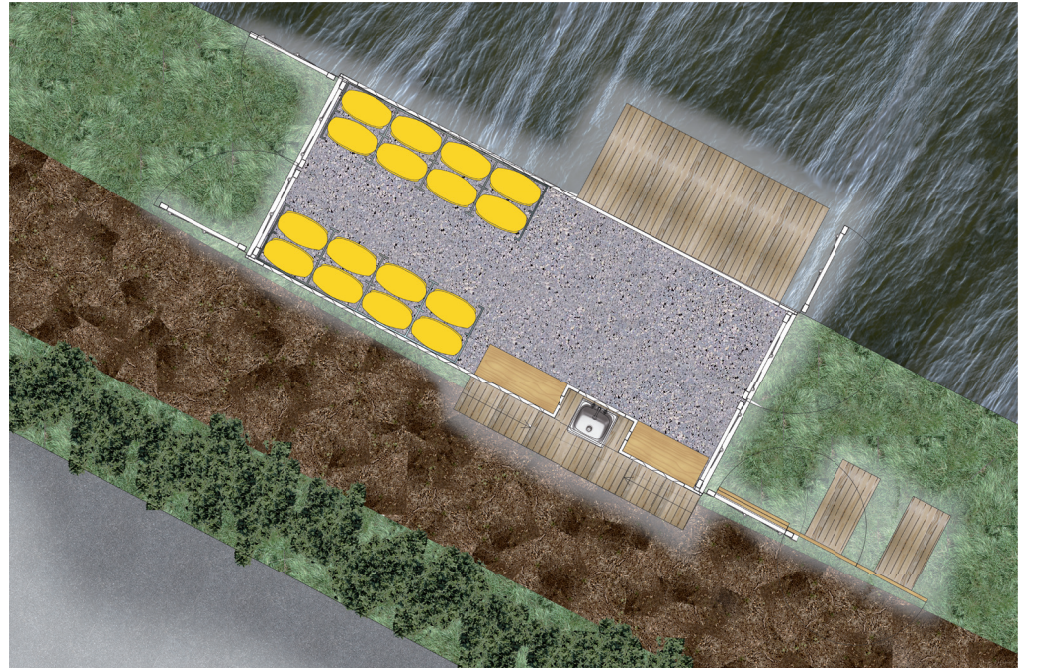
VALERIJA KAMOLINA

The Canoe Hub is strategically situated close to Printing House Lane Bridge, offering a facility not just for The Sharks, but also for people walking along the canal - and their dogs. It integrates a noticeboard to advertise The Sharks' activities, seating area to rest, enjoy the water and observe the canoeing activities, and a dog drinking fountain. The material chosen was selected through consultation with locals.

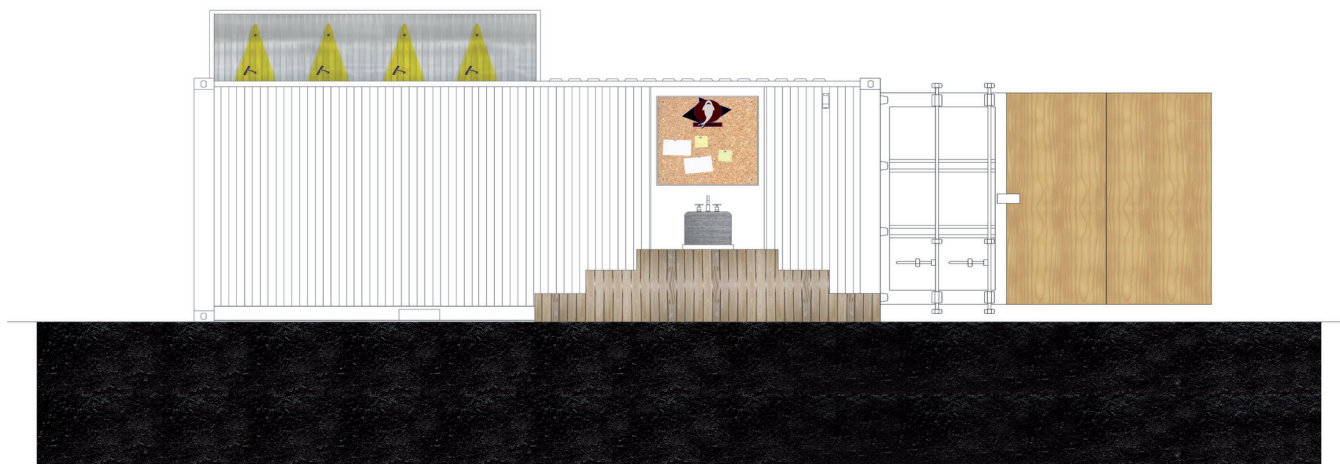
BOATS AND DOGS



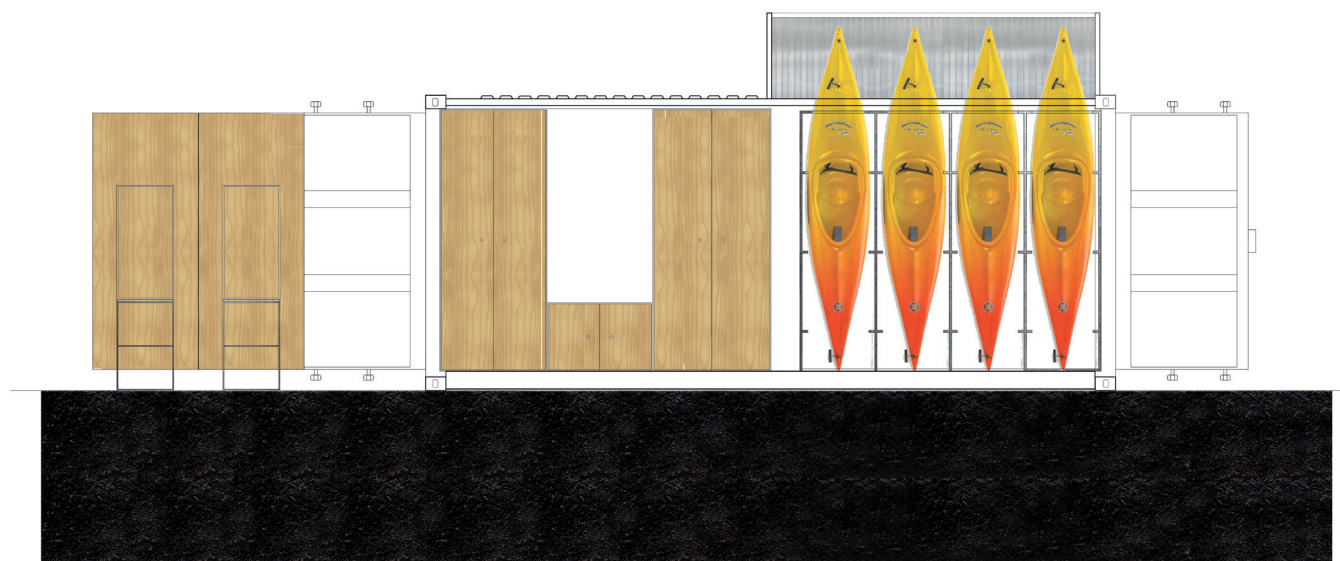
A long exploration of the canal with a dog



Plan of the hub with the stored kayaks



Elevation of the hub with the meeting point

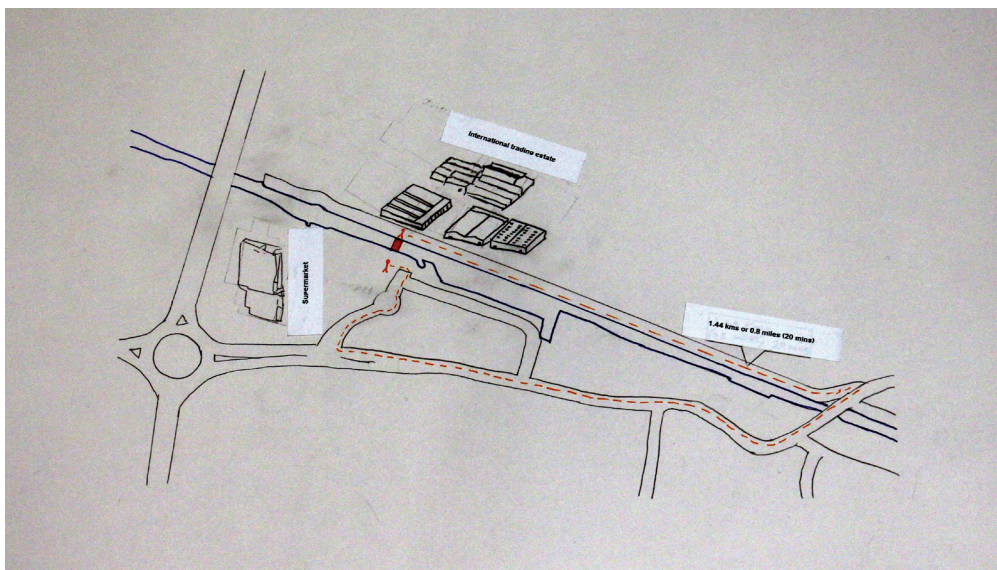
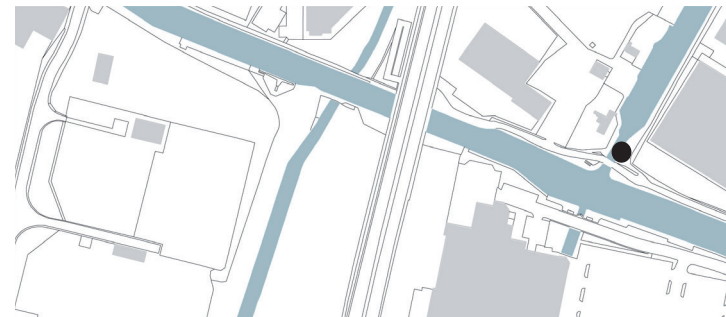


Section of the hub with the kayaks in storage

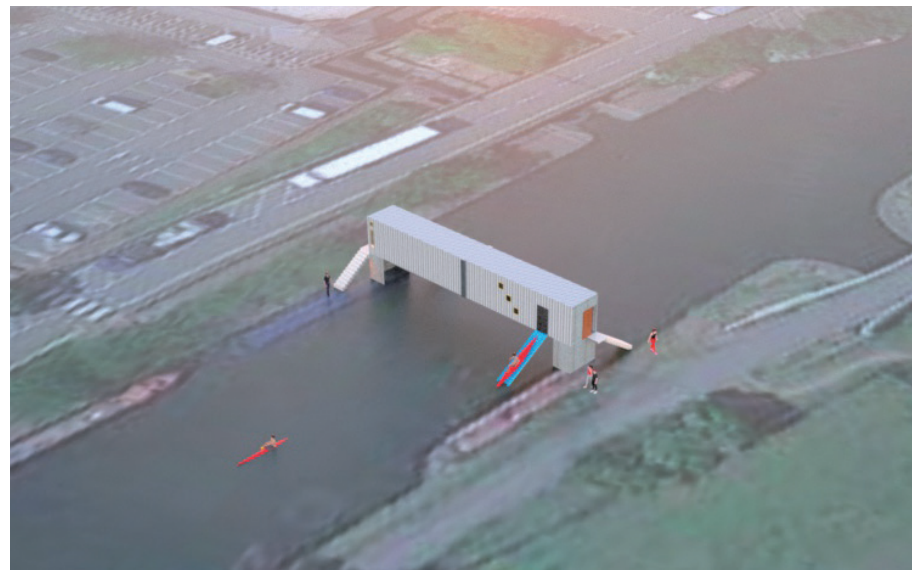
CANOEING BRIDGE

YASH GEHI

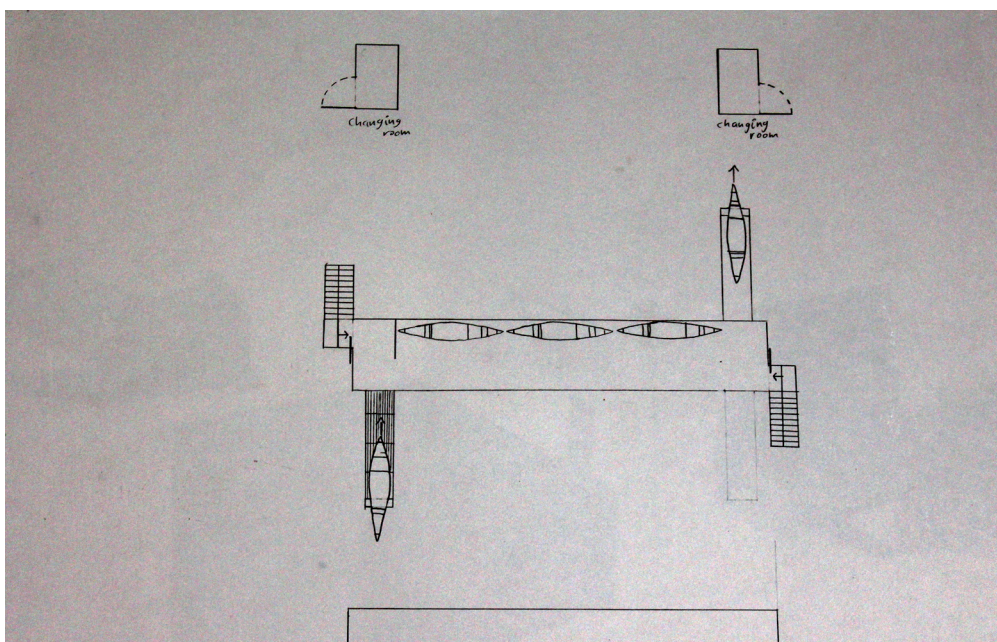
The new Canoe Hub location near Bulls Bridge is carefully chosen to create a bridge connection between Tesco and the opposite housing area. The connection is created during opening hours of the Canoeing Club only and enlivens the canal in this area. Conveyor belt, carefully considering the process of getting from land onto water. Heavy cast base opposes light container structure.



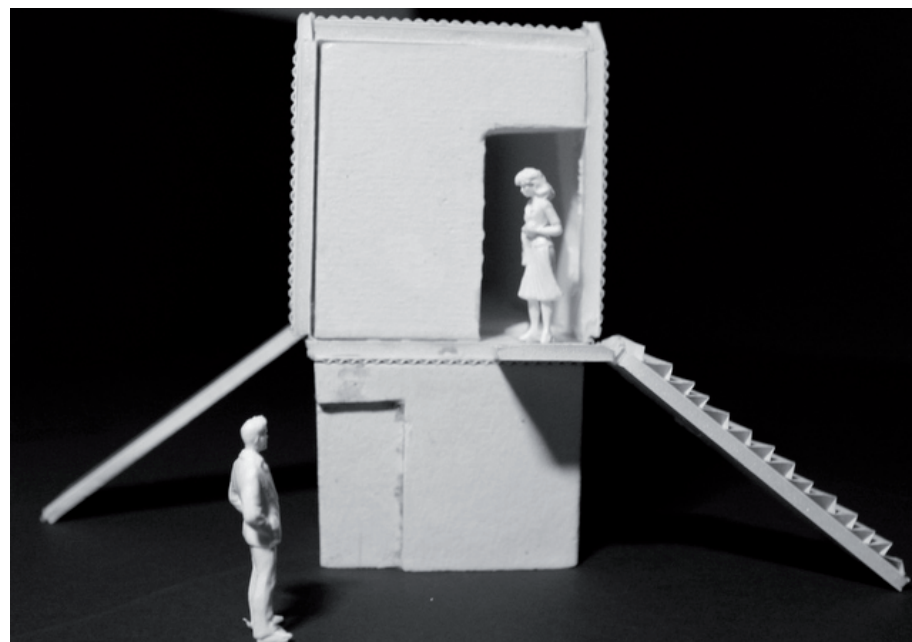
Study of the crossing points over the canal



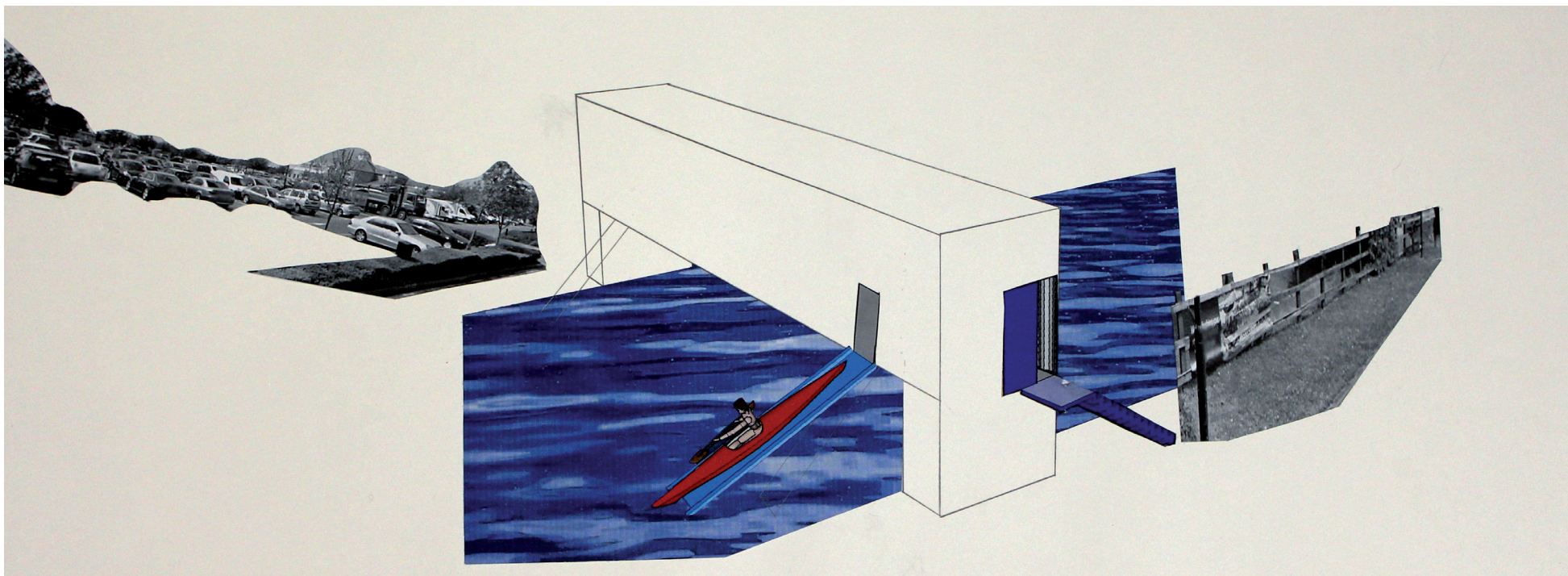
View of the proposal, which provides a new link from the supermarket to the towpath



Plan of the hub over the canal



Model of the piers supporting the new 'bridge'

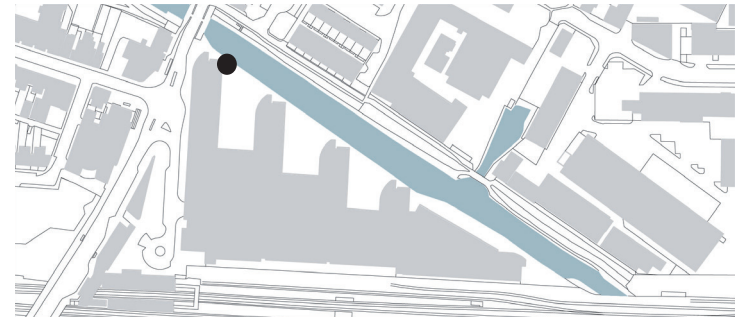


Collage

DARINE CHEKKOURI

CONTAINER BRIDGE

The Canoe Hub is integrated into a new pedestrian bridge connecting Highpoint Village with the Austin Estate. The container bridge offers a series of activities above the water, complementing the canoeing activities as well as extending and enlivening Highpoint Village square.



Study of the different building types and uses surrounding Shackles Dock



View from the towpath over the canal to the new 'Plaza'

01 Western view street perpendicular to High st
Residential area overlooking Canal
Quiet neighborhood
Inactive edges

02 Grand union canal
Stretches 137 miles to Birmingham
neglected canal

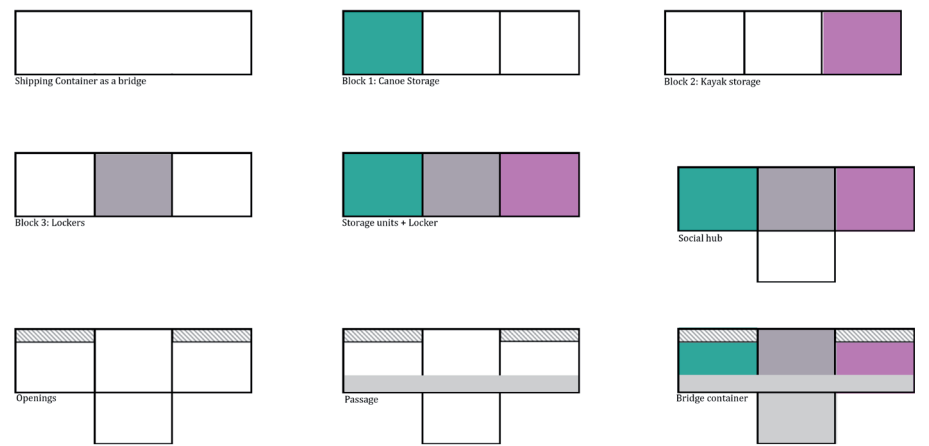
03 Residential Buildings
Residence overlooking canal
stands out

04 Hayes high street
Perpendicular to canal
Busy High street
Markets and shops
access

05 Main access to canal
On Western view street
Not used

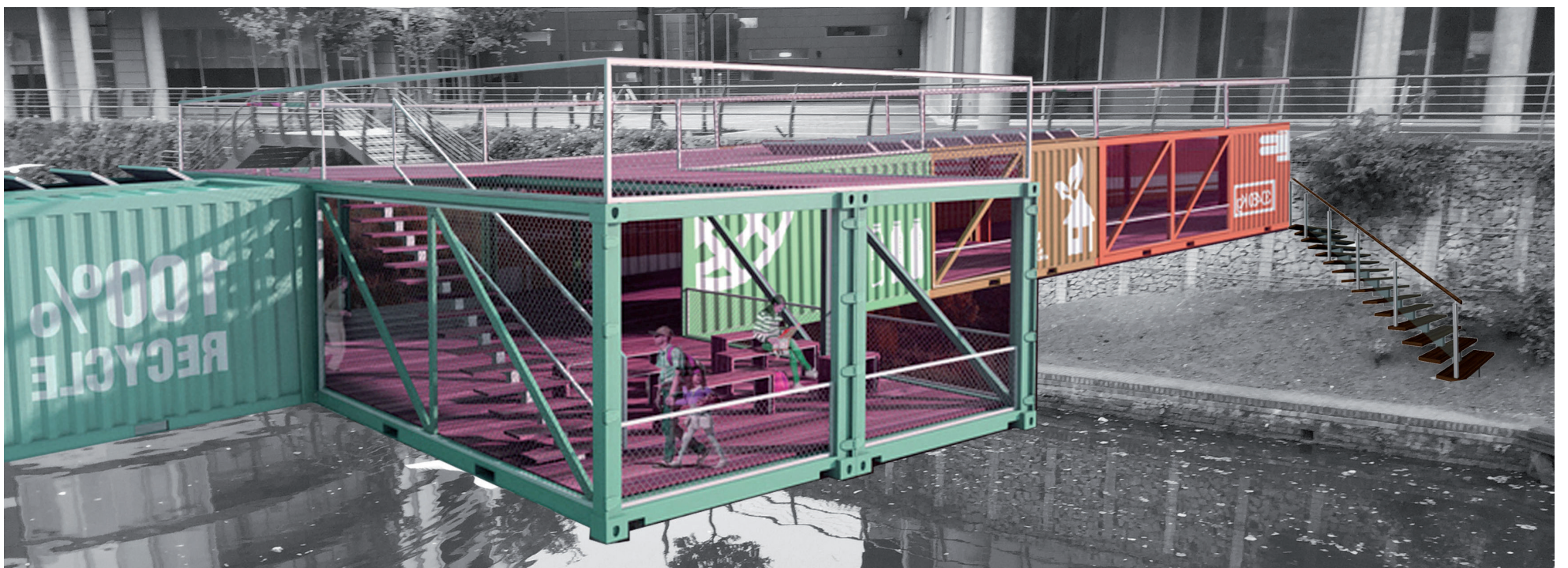
06 Journey along the canal
experience
cyclists/visitors...

Mapping the site: Hayes.



Study of the different building types and uses surrounding Shackles Dock

Study of the different spaces

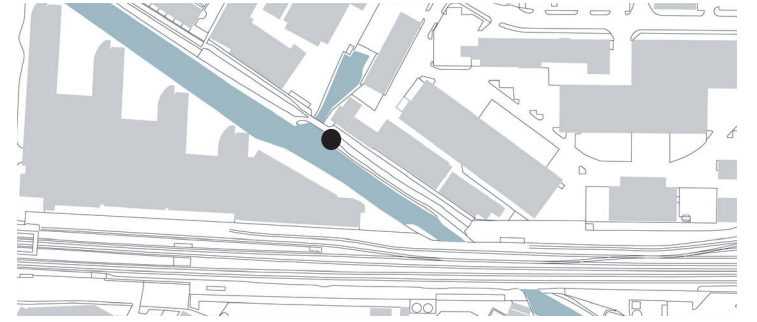


View of the hub providing a new bridge over to the 'Plaza'

BEACON

The red Canoe Hub is a landmark, very visible from Station Road Bridge, inviting people to walk along the canal and visit the Hub, as well as enabling the tower to be an observation and supervision point for The Sharks' canoeing activities.

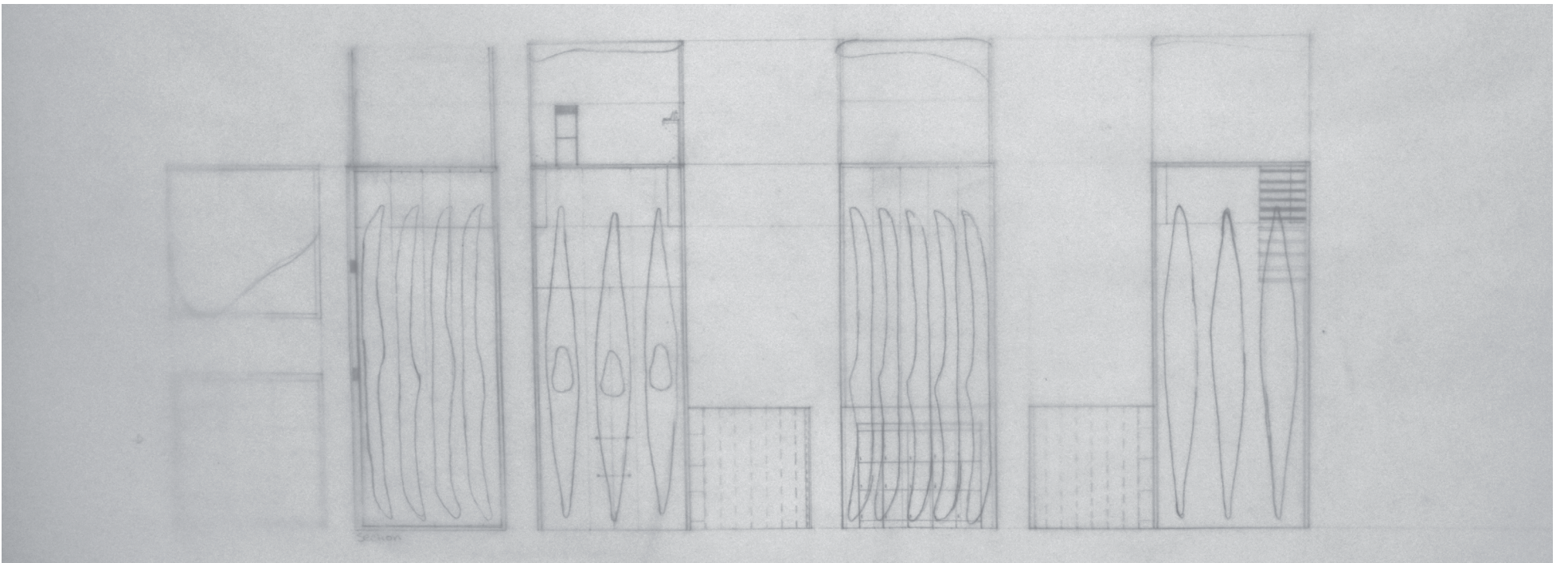
SHAMS AL SAFFAR



View of the hub from the Station Road bridge, which links the station to the high street



View from the bridge at Shackles Dock of the hub



Study sections with the stored kayaks

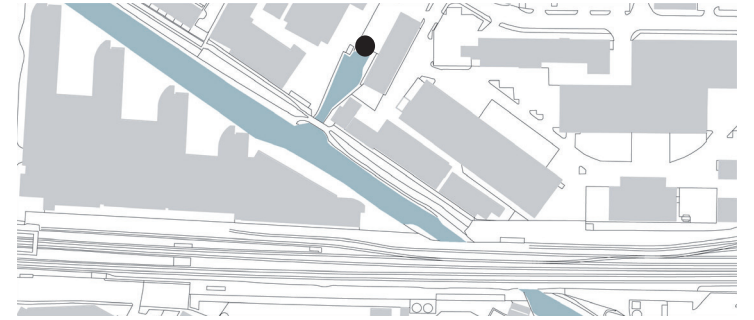


View from the new platform at the top of the hub

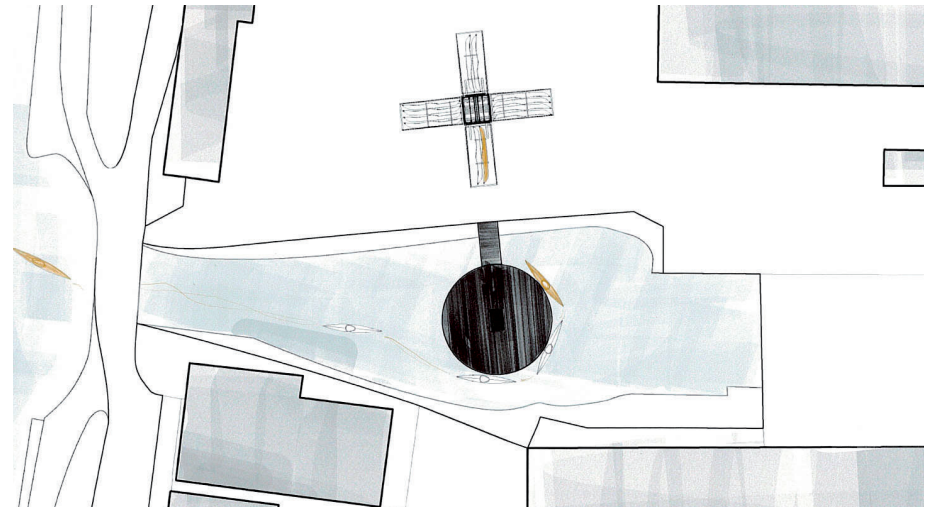
CANOE HOIST

The canoeing club consists of two striking geometrical features: the vertical storage tower with detailed pulley mechanism to lower the canoes, and the circular floating platform inside Shackles Dock. This allows a large number of canoes to dock and be supervised, also offering activities on the water when The Sharks are not operating.

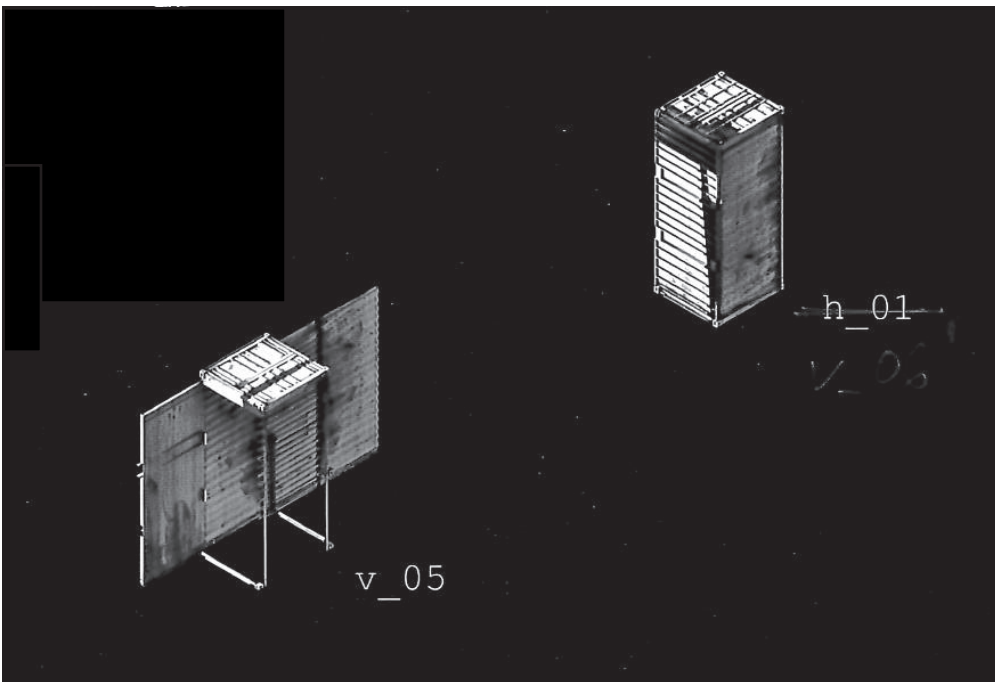
CHAWKI KARAM



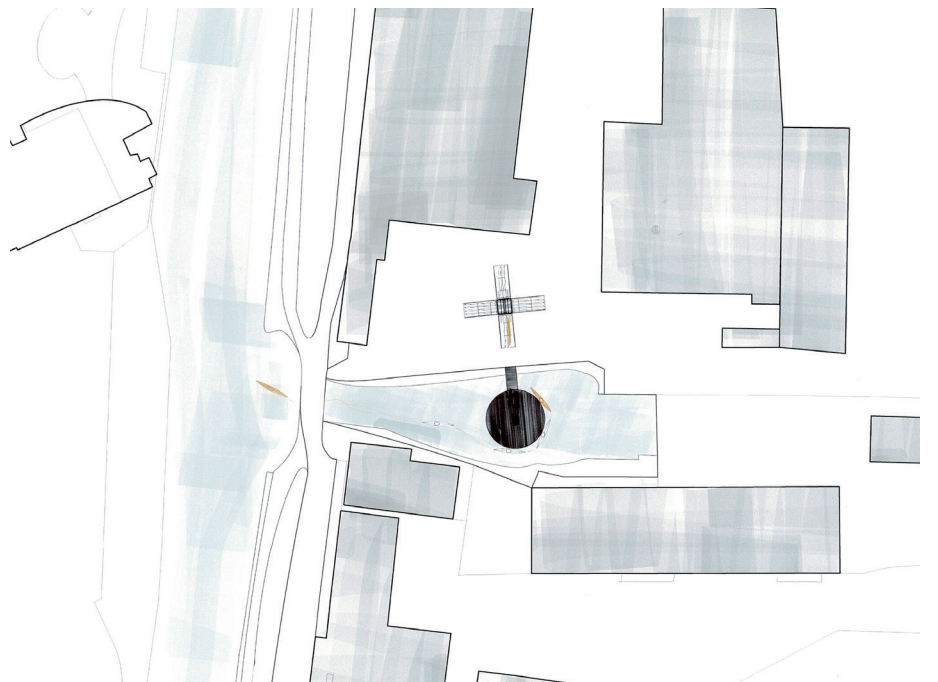
View along the towpath at the entrance to the Shackles Dock inlet



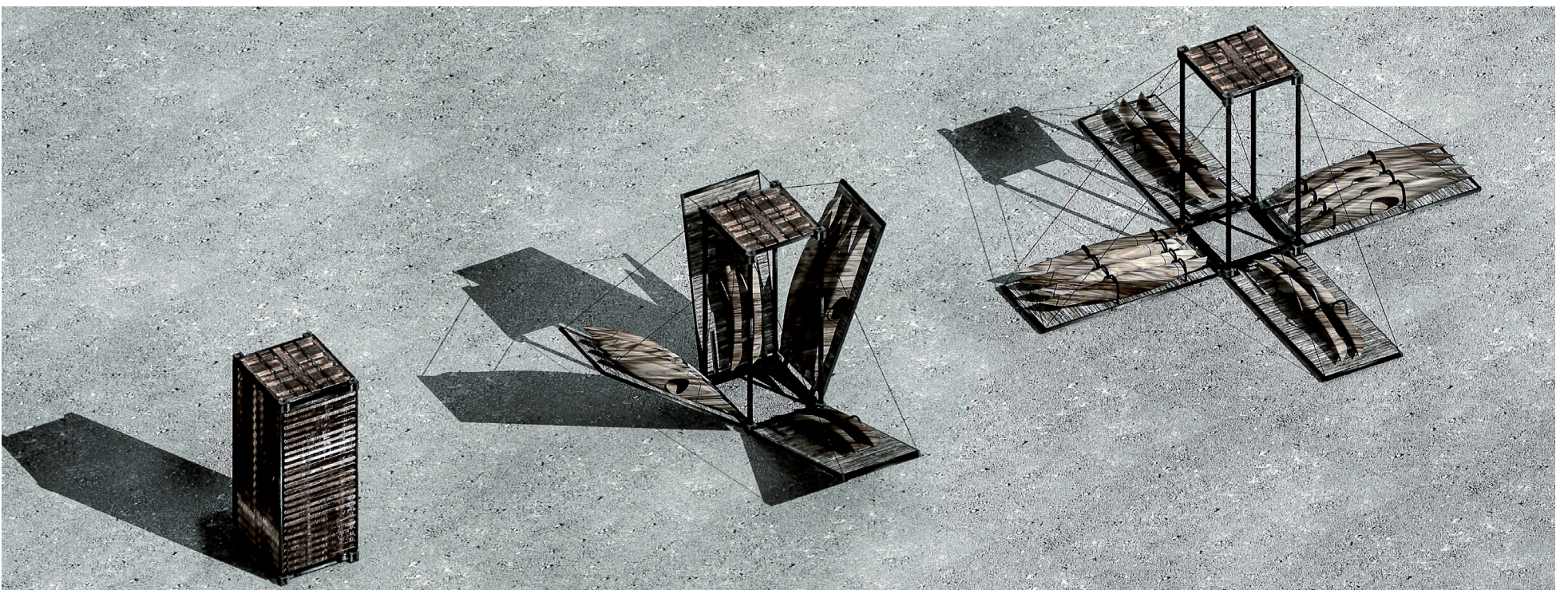
Plans of the hub and the new platform in the Shackles Dock inlet



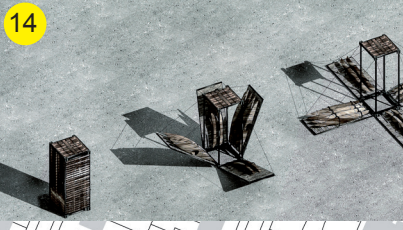
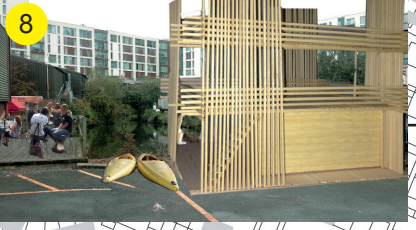
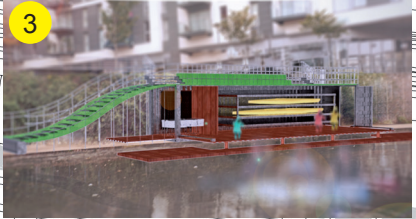
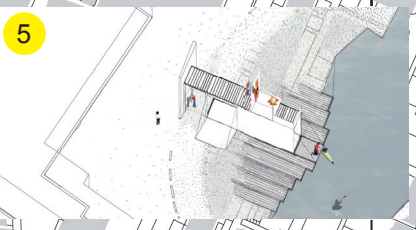
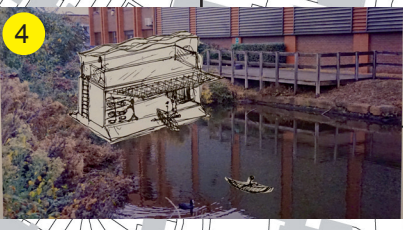
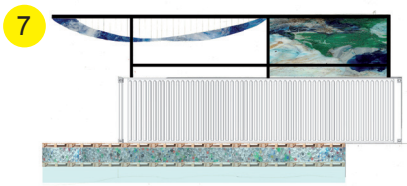
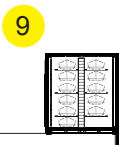
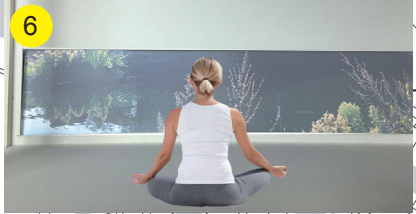
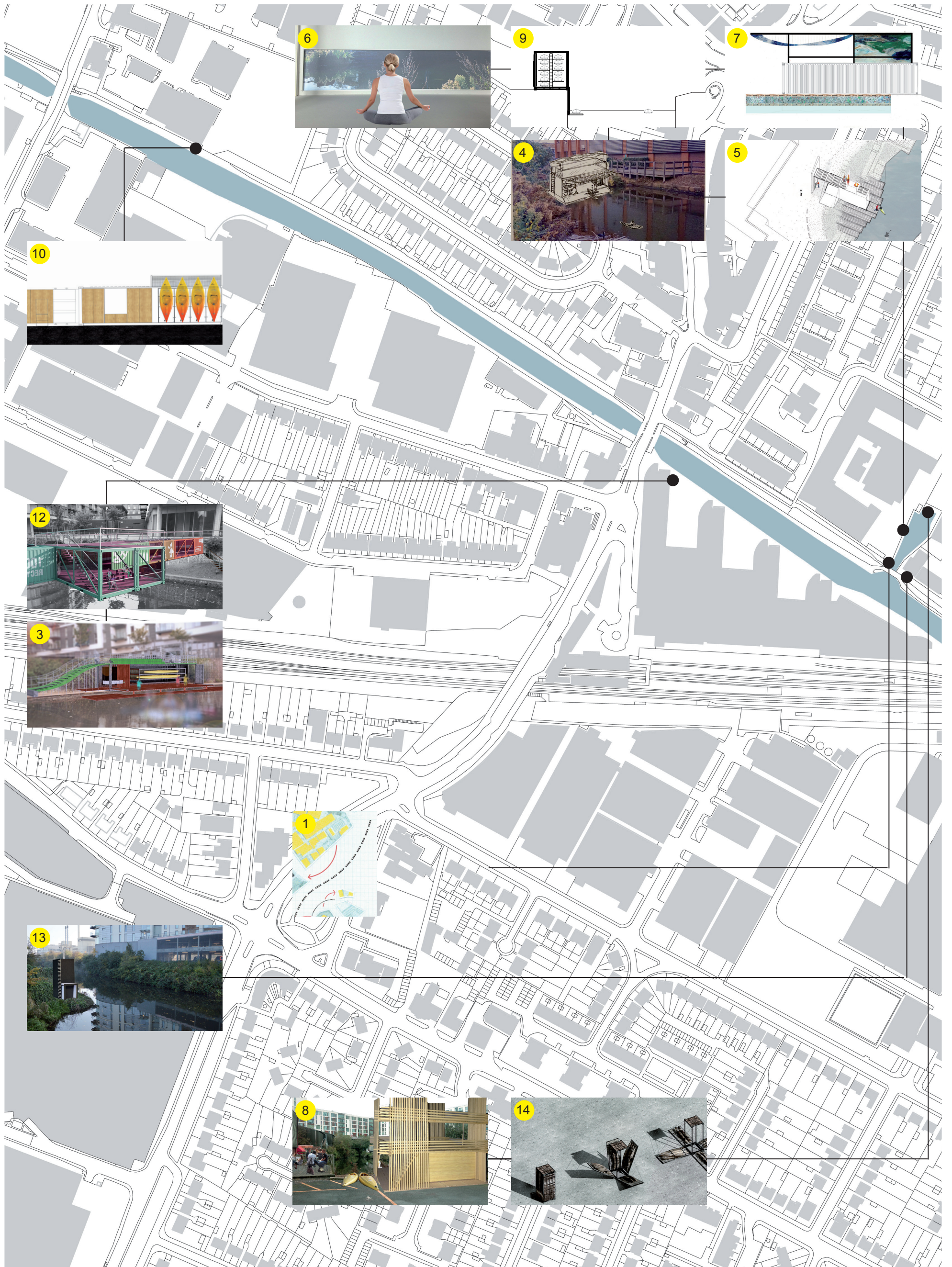
The hub unfolds to allow access to storage and create a shelter



Location Map

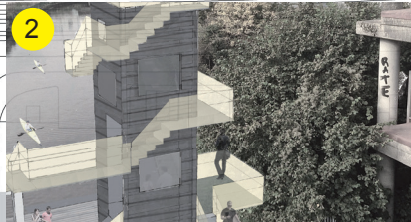


The hub can open in a variety of ways, creating a sheltered spot



HAYES TOWN PROPOSAL SITES

- Andrada Luca p. 1
- Jihane Haddioui p. 2
- Junxue Piao p. 3
- Akshay Patel p. 4
- Josephine Kawiche p. 5
- Katrina Vilcane p. 6
- Lottie Conway-Plumb p. 7
- Olga Ivanova p. 8
- Raphael Angelina p. 9
- Valerija Kamolina p. 10
- Yash Gehi p. 11
- Darine Chekkouri p. 12
- Shams Al Saffar p. 13
- Chawki Karam p. 14





Architecture Studio 3 canoeing with the Sharks
November 2015