

Collaborative online biological sample database will be a high quality data provider for global information systems

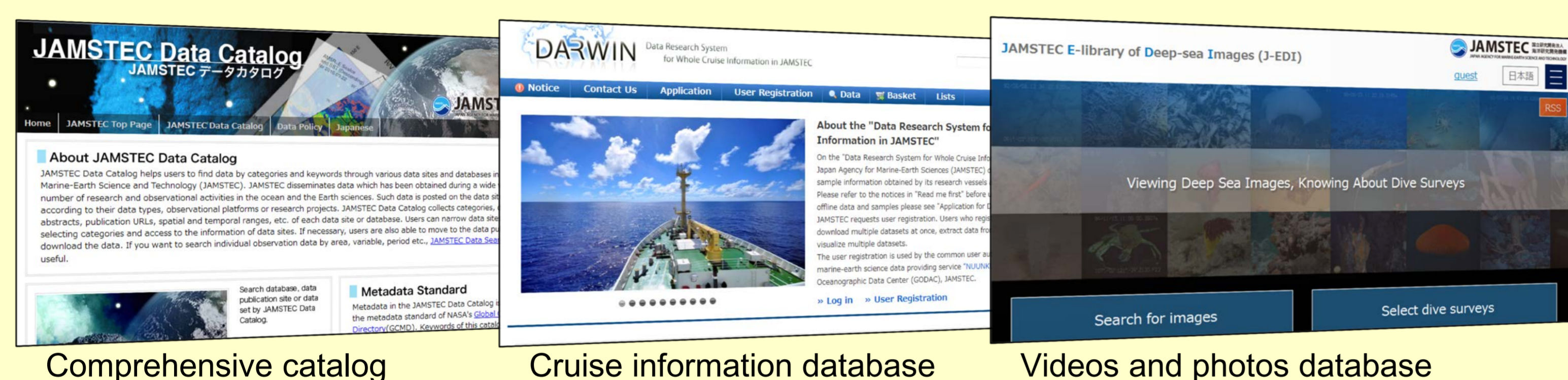
Marika Ichiyanagi¹, Tohru Iseto¹, Takako Sato¹, Nobuyuki Saito², Masatomo Hisazumi², Takashi Hosono¹, Tomoki Sasaki¹, Hideaki Saito¹, Yasunori Hanafusa¹

1. Japan Agency for Marine-Earth Science and Technology, 2. Marine Works Japan LTD.

Introduction

Japan Agency of Marine-Earth Science and Technology (JAMSTEC) has been engaged in researches on the ocean, earth and life since 1971, and obtained a variety of data and samples by JAMSTEC cruises and activities.

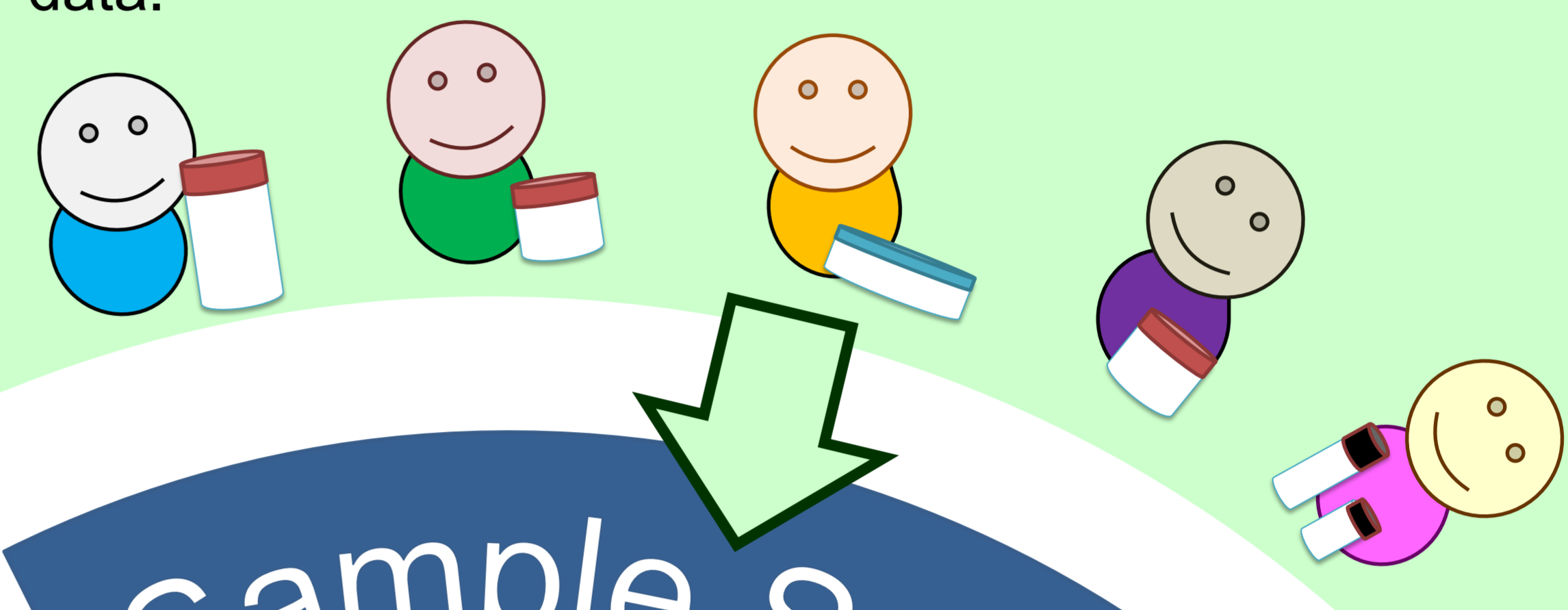
In 2007, "Basic Policies on the Handling of Data and Sample were enforced. Since then, JAMSTEC data management office (DMO) have begun to assemble and archive these data and samples, and made these data and samples accessible to the public via series of online databases "NUUNKUI".



Update

JAMSTEC Biological samples are stored by each scientists who collected because biological samples are not dividable or duplicatable.

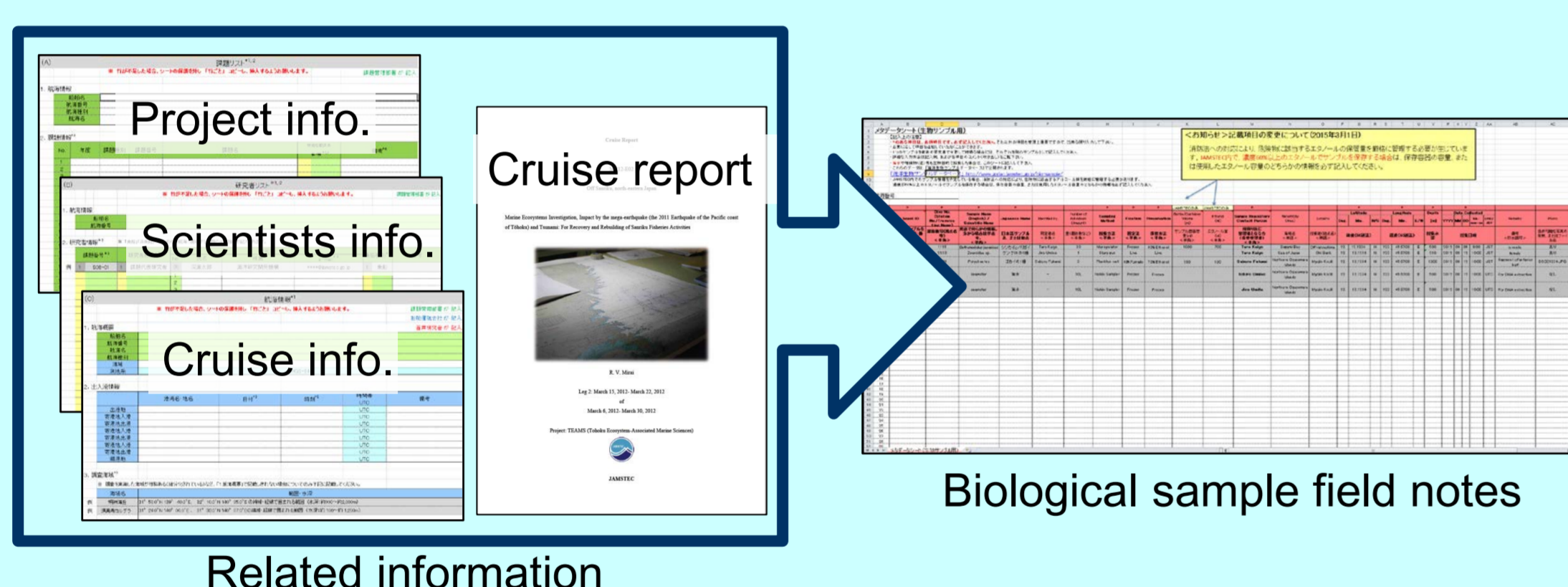
The user authentication system of Marine Biological Sample Database allows these scientists to access the online editor interface and refine their applicable samples' data.



Archive

Over 41,200 biological data collected from a surface of the ocean to a depth of 10902m by JAMSTEC research projects since 1982 have been assembled and archived with other related information.

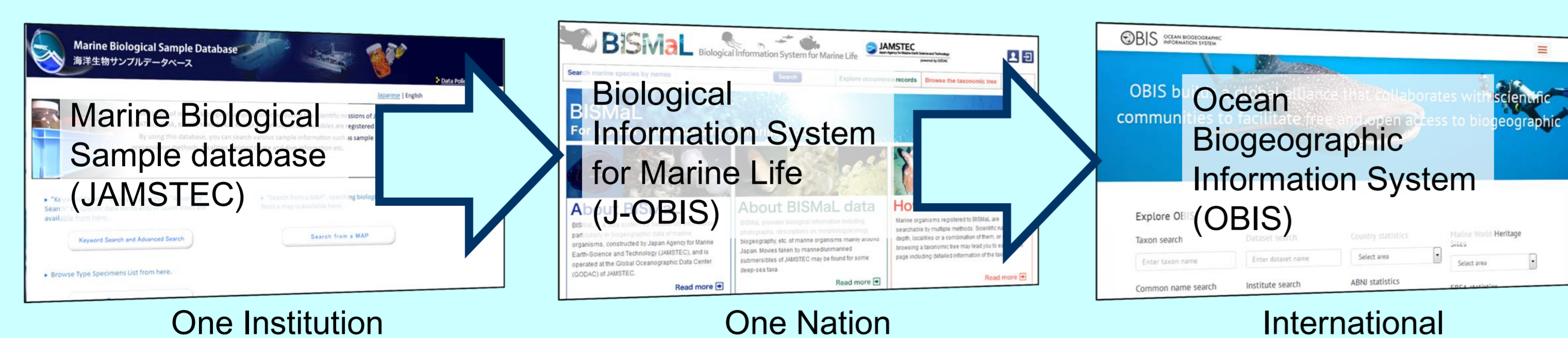
The related information were added to the biological data, and provided at Marine Biological Sample Database.



Share

JAMSTEC biological data is formatted as similar to the standard for sharing information about biological diversity "Darwin Core" for contributing to other information systems.

For example, the data are provided to one of our databases, Biological Information System for Marine Life "BISMaL". BISMaL is also a data provider system of the Japan Ocean Biogeographic Information System Center (J-OBIS) to Ocean Biogeographic Information System (OBIS) as its Japan node.



Acknowledgement

We thank all scientists and their supporters who collected biological samples and metadata through JAMSTEC cruises for providing their data to JAMSTEC data management office. With their cooperation, we could provide high quality data to other international databases, and increase the value of the data.

Contact Us

JAMSTEC data management office: dmo@jamstec.go.jp

Browsing

Marine Biological Sample Database is also the entrance to the access of JAMSTEC biological samples, and the potential sample users can browse and request these samples. In addition that digitized data and samples may be useful for educational use and reduce the risks of data and sample lost from natural and man-made disasters.

Reference

Marine Biological Sample Database
http://www.godac.jamstec.go.jp/bio-sample/index_e.html
 NUUNKUI
<http://www.godac.jamstec.go.jp/jmedia/portal/e/index.html>

