



タイトル Title	Colonial Sciences on Geography, Forestry and Meteorology: Japanese colonial documents kept in Kyoto University
著者 Author(s)	Tsukahara, Togo / Ayabe, Hironori
掲載誌・巻号・ページ Citation	Science and Empires, what is the "British" Networks of Science? ;50-56
刊行日 Issue date	2014-07
資源タイプ Resource Type	Presentation / 会議発表用資料
版区分 Resource Version	publisher
権利 Rights	
DOI	
JaLDOI	
URL	http://www.lib.kobe-u.ac.jp/handle_kernel/81011201

Makita & Tsukahara, 1/7

The 3rd International Workshop on JSPS project of
"Historical Studies on Japanese Imperial Sciences and Its Network"

Colonial Sciences on Geography, Forestry and Meteorology: Japanese colonial documents kept in Kyoto University

Van Makita (Kyoto University)
Togo Tsukahara (Kobe University)

京都大学農学部附属演習林関連資料の紹介
榎田盤(京都大学)・塚原東吾(神戸大学)

Major Materials

- 1) Aerial photograph and Hand drawn Map,
Karafuto Univ. Forest 1930
樺太演習林 航空写真と地図
- 2) Report of the student training Journey 1930
学生実習記録
- 3) Cultivation of quinine ,Taiwan Univ. For. 1940
台湾演習林 規那(キナ)栽培
- 4) Biological specimen 腊葉標本
- 5) Record of Meteorology 気象観測記録

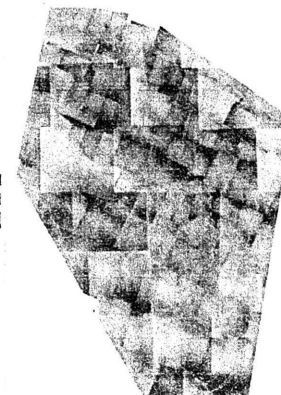
0050

Kyoto University Forest Abroad

外地演習林



Combined Aerial photograph and Handdrawn Map, Karafuto Univ.For.

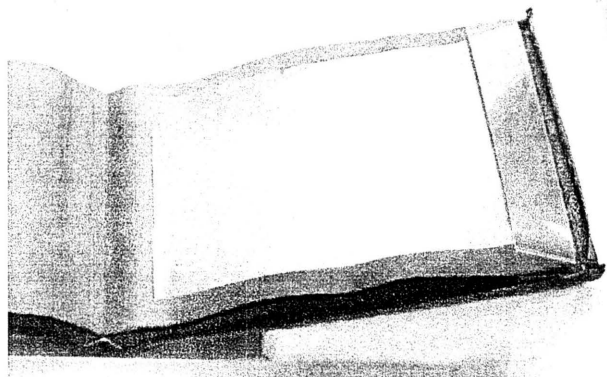


1100 × 1600mm

1070 × 1400mm
1/20000 May.1933

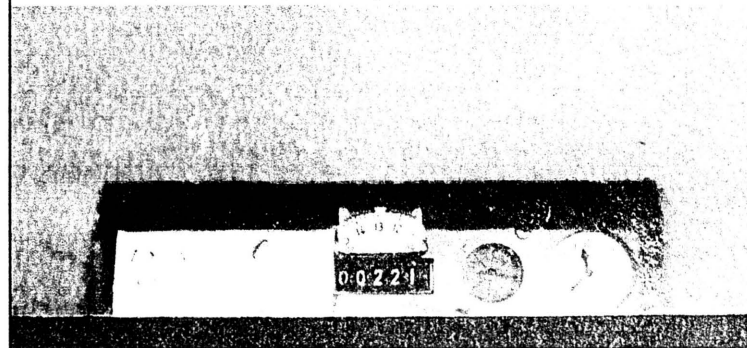
Makita & Tsukahara, 2/19


4 Albums of Aerial photograph at Karafuto Univ. Forest in 1930



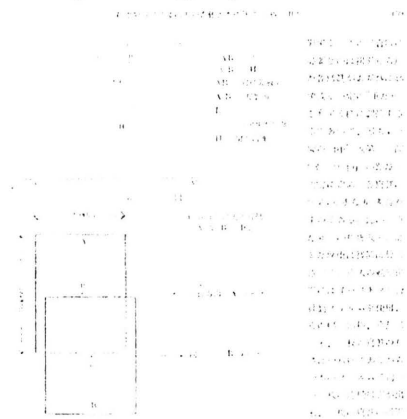
18cm x 24cm 197 sheets

Handwritten note ,Altitude(ft), Counter,Compass and Clock



7.27 (date) 12.9 (ft)  N
00221 (counter) 11:38 (time)

Itai,Hideo " Forest survey with Aerial photograph in Karafuto "1935

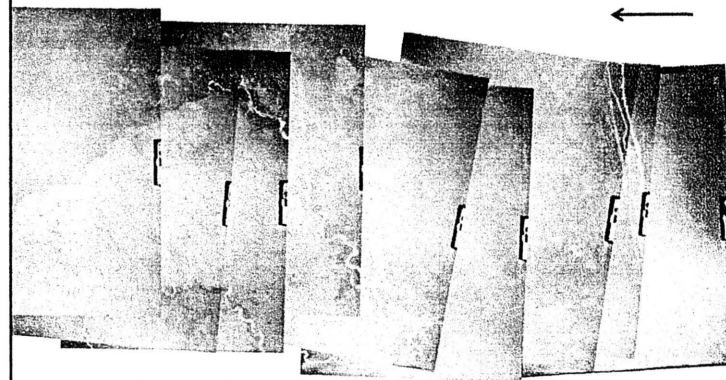


Forest survey by the government of Karafuto Prefecture
These photos were shot from the airplane of Shimoshizu Army Flying School in summer, 1930

板井秀夫(樺太廳林業課)
「航空寫眞に依る樺太の森林調査に就て」
日本林学会誌, 17(6), p. 457-468, 1935.

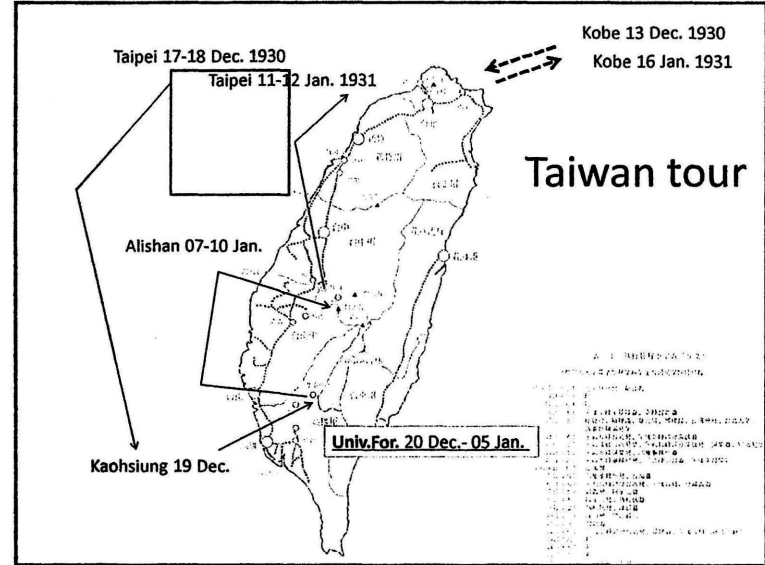
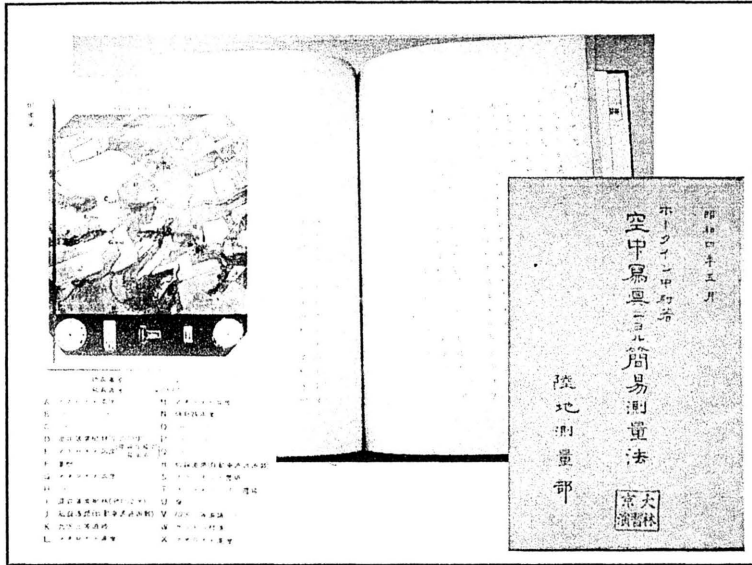
(sample) Course no.5

27 July 1930
12:55



no.80 79 78 77 76 75 74 73 no.72

Makita & Tsukahara, 4/7



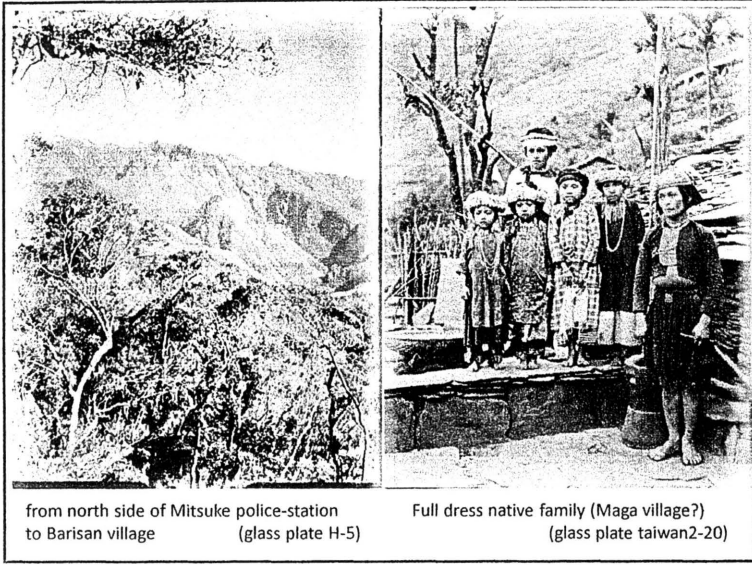
0053

Reports of experimental training tour

学生実習記録
 安藤信「戦前期の外地演習林における学生実習(1)」
 (京大演習林集報25(1993) p.141-155)

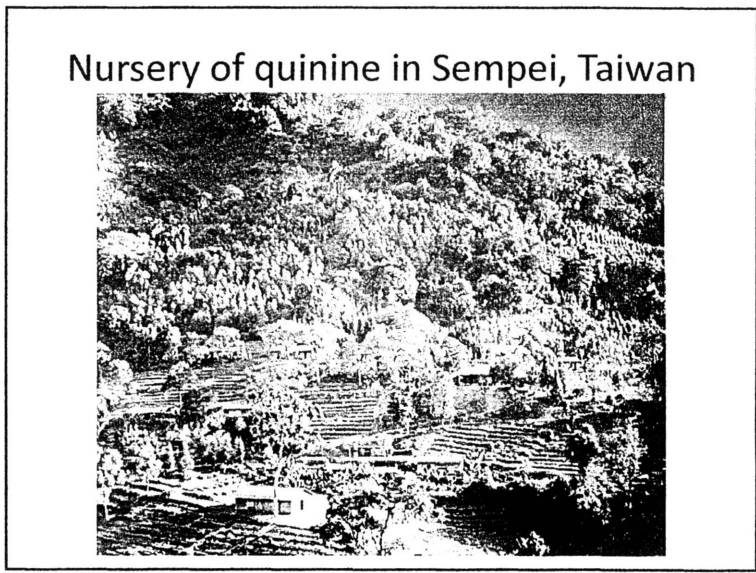


Makita & Tsukahara, 5/17



from north side of Mitsuke police-station to Barisan village (glass plate H-5)

Full dress native family (Maga village?) (glass plate taiwan2-20)



Nursery of quinine in Sempei, Taiwan

0054

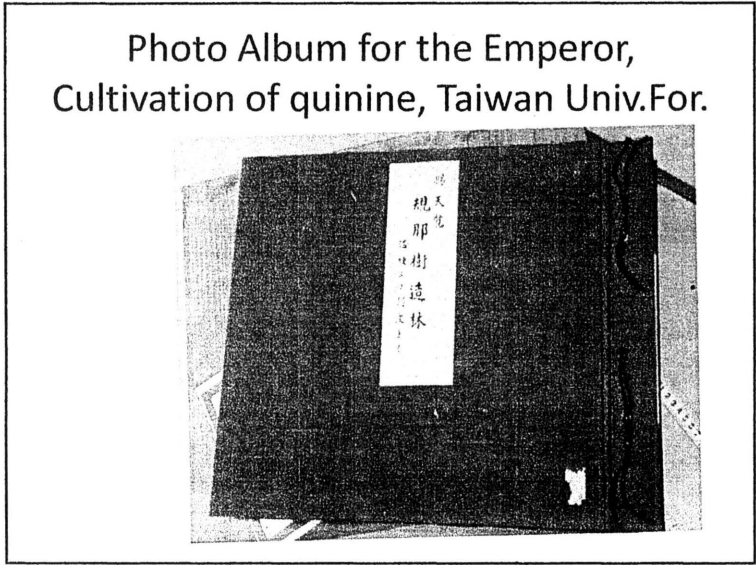


Photo Album for the Emperor, Cultivation of quinine, Taiwan Univ.For.



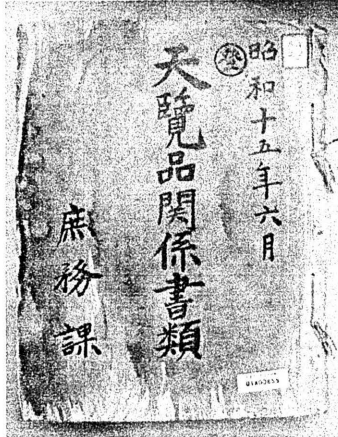
Newspaper on 11,12 Jun. 1940

Makita & Tsukahara, 6/7

Administrative Document of the special exhibition for the Emperor

about the Scientific
research results of
the Kyoto Imperial
University in 1940

Kyoto University
Archives
(01A00855)
「天覧品関係書類」
京都大学文書館



List of the exhibition

- Marine Chemistry (ex.gold from sea water)
- High-octane aviation fuel
- Rice Production
- Eating quality of Rice in Korea
- Vanadium for the production of Sulfuric acid
- Ultra-high pressure mercury lamp
- Manganese metal
- Tundrite-(Nd)
- Productions from Organo-sol
- Synthetic petroleum
- Synthetic fibers
- Glass fiber
- Cultivation of quinine

Preparation and the after

- 18 Feb. List of the material for the exhibition
7 Mar. Meeting with the manager of Kyoto pref.
(Scheduled for April is postponed)
End of Apr. Fixed the list by the Court officer
27 May Layout plan of the exhibition
2 Jun. Test exhibition at the Univ.
3-4 Jun. Test of the presentation
6 Jun. Medical examination of the attendance
7 Jun. display the exhibition at Kyoto Imperial Palace
8 Jun. Guidance for the presenters from the Court officer
11 Jun. 5 pm. Viewing of the Emperor
13 Jun. Taking the photos of the exhibition
14 Jun. Removing the exhibition
26 Jun.- Receipts for the imperial grant
10 Jul. Sending research papers to the Army

Exhibition of cultivation of quinine



Makita & Tsukahara, 9

Biological specimen

腊葉標本

Collectors : S. Okamoto
Isotype of
Rubus okamotoanus Koidz.
Acta Phytotax.
Geobot. 8: 110 (1939).
KYO 00022379



Kyoto Univ. Museum
Transferred from FSERC
in 2005

Field Science Education and Research Center, Kyoto Univ.
<http://fserc.kyoto-u.ac.jp>

Kyoto Univ. Museum (Natural History Collection DB)
<http://nhdb.museum.kyoto-u.ac.jp/>

Kyoto Univ. Archives
<http://kua1.archives.kyoto-u.ac.jp/ja/>

Research Resource Archive, Kyoto Univ. (KURRA)
<http://www.rra.museum.kyoto-u.ac.jp/>

Van Makita
makita@adm.kais.kyoto-u.ac.jp



Univ. Forest Office In Kyoto Univ. Campus
since 1931

0056

Record of Meteorology 気象観測記録

『演習林気象報告』

Pressure, temperature, humidity,
soil temperature, precipitation,
wind direction, etc.
(monthly Average, max, min, total)

Karafuto Apr.1924 - Dec.1940
Chosen Apr.1924 - Dec.1940
Taiwan Jun.1927 - Dec.1940

(Kyoto Main Campus
Jul.1925- Present)



Library of FSERC Forest, Kyoto Univ.