

The clinical and biological significance of HER2 over-expression in breast ductal carcinoma *in situ*: A large study from a single institution

Islam M Miligy^{1,2}, Michael S Toss^{1,3}, Kylie L Gorringer^{4,5}, Andrew H S Lee¹, Ian O Ellis¹, Andrew R Green¹ and Emad A Rakha^{1,2}

¹Nottingham Breast Cancer Research Centre, Division of Cancer and Stem Cells, School of Medicine, The University of Nottingham, Nottingham City Hospital, UK. ²Histopathology department, Faculty of Medicine, Menoufia University, Egypt, ³Histopathology department, South Egypt Cancer Institute, Assiut University, Egypt, ⁴Cancer Genomics Program, Peter MacCallum Cancer Centre, Melbourne, and ⁵The Sir Peter MacCallum Department of Oncology, University of Melbourne, Parkville, Australia.

Correspondence:

Professor Emad Rakha

Department of Histopathology, Nottingham University Hospital NHS Trust,

City Hospital Campus, Hucknall Road, Nottingham, NG5 1PB, UK

Tel: (44) 0115-9691169, Fax: (44) 0115-9627768

Email: emad.rakha@nottingham.ac.uk, Emad.rakha@nuh.nhs.uk

Key words: ductal carcinoma in situ, HER2, immunohistochemistry, in situ hybridisation, recurrence

Running title: HER2 status in DCIS

ABSTRACT

Background: Previous studies have reported up to 50% of ductal carcinoma *in situ* (DCIS), is HER2 positive, but the frequency of HER2 positive invasive breast cancer (IBC) is lower. The aim of this study is to characterise HER2 status in DCIS and assess its prognostic value.

Methods: HER2 status was evaluated in a large series of DCIS (n=868) including pure DCIS and DCIS associated with IBC, prepared as Tissue Microarrays (TMAs). HER2 status was assessed using immunohistochemistry (IHC) and chromogenic *in situ* hybridisation (CISH).

Results: In pure DCIS, HER2 protein was over-expressed in 9% of DCIS (3+), whereas 15% were HER2 equivocal (2+). Using *CISH*, the final HER2 status was positive in 20%. In mixed DCIS, *HER2* amplification of the DCIS component was detected in 15% with amplification in the invasive component of only 12%. HER2 positive DCIS was associated with features of aggressiveness ($p < 0.0001$) and more frequent local recurrence ($p = 0.03$). On multivariate analysis, combined HER2+/Ki67+ profile was an independent predictor of local recurrence ($p = 0.006$).

Conclusions: The frequency of HER2 positivity in DCIS is comparable to IBC and HER2 positive DCIS is associated with features of poor prognosis. The majority of HER2 over-expression in DCIS is driven by gene amplification.

INTRODUCTION

Ductal carcinoma *in situ* (DCIS) of the breast was less common before the 1980s; however, with the introduction of mammographic screening, the incidence has increased dramatically and now comprise approximately 20% of breast cancers¹. Over the last decade, breast carcinoma *in situ* incidence rates have increased by almost half (46%) in the UK (<http://www.cancerresearchuk.org/health-professional/cancer-statistics>). The mortality from DCIS is very low, with a maximum of 3% at 20 years of follow-up and the survival after surgery is excellent².

Following a diagnosis of DCIS, women are at elevated risk for disease progression³, but not all DCIS cases progress to invasive carcinoma if untreated with an estimated risk in the range of 25–50%⁴. Therefore, the main aim of DCIS management is to prevent progression and local recurrence, particularly invasive recurrence⁵.

Clinicians are unable to precisely predict the risk of local recurrence or progression to invasive cancer in patients with DCIS following their treatment, a major concern that needs to be addressed. Treatment is by mastectomy, or lumpectomy with or without adjuvant radiotherapy⁶. Factors such as young patient age, large tumour size⁷, positive margins, comedo necrosis, and high nuclear grade⁸ are associated with a higher risk of recurrence with some emerging data suggesting that *ERBB2*-amplified (HER2) DCIS could present a higher risk of recurrence⁹. The Van Nuys Prognostic Index (VNPI) is a popular risk assessment tool combining patient age, lesion size, nuclear grade and margin status for treatment decisions¹⁰.

HER2 is an established negative prognostic factor in invasive breast cancer¹¹. The prognostic significance of HER2 status in DCIS is, however, less clear^{1,12}. The relationship of HER2 to risk of recurrence and its role in the progression from *in situ* to invasive cancer have been debated⁹. HER2 over-expression is reported to be more frequent in DCIS than in invasive cancer¹³. This may seem contradictory, as HER2 is proposed to play a role in tumour progression. Some studies report an even higher proportion of HER2 positivity in micro-invasive cancer¹⁴ and, in preoperative tumour biopsies displaying DCIS, HER2 over-expression has been related to increased incidence of invasive carcinoma in the surgical specimen¹⁵. Furthermore, HER2 positivity is associated with high histopathological grade both in invasive cancer and in DCIS¹⁶.

Immunohistochemical staining (IHC) can be used as a surrogate marker of gene expression profiling in invasive breast cancer, utilising ER, PR, HER2 and Ki-67 protein expression to split patients into four different molecular phenotypes¹⁷. Similar subtypes have been found in DCIS, but the prognostic significance of grouping DCIS into these subtypes is not yet clear. Some studies have suggested the most appropriate treatment could be identified by evaluating individual expression of genes or receptors in DCIS¹⁸.

IHC staining is the predominant method of determining HER2 status in breast cancer specimens due to its relative ease to perform with rapid turnaround time and lower cost¹⁹. Although commercially

available antibodies have shown wide variation in sensitivity and specificity for formalin-fixed paraffin embedded (FFPE) tissue samples, in which tissue fixation and pre-treatment have a substantial effect on staining^{20, 21}, a significant improvement of the diagnostic standards in clinical histopathology with quality control measures were able to improve diagnostic performance in clinical practice²².

HER2 gene amplification is primarily detected by *in situ* hybridisation and uses fluorescence (FISH) to detect the signals. This method is expensive and requires expertise with fluorescent microscopy using appropriate filters²³. Chromogenic *in situ* hybridisation (CISH) offers an alternative method, and whilst it utilises *in situ* hybridisation technology of FISH, it takes advantage of a chromogenic signal detection that is assessed using light microscopy and therefore costs much less than FISH. CISH is able to detect *HER2* gene amplification and to minimise, if not eliminate, the borderline category with IHC²⁴. The performance of CISH in *HER2* testing has rarely been tested in series, so we aimed to characterise *HER2* status using IHC and CISH in DCIS and assess its prognostic value in a large and well annotated cohort.

PATIENTS AND METHODS

Study Cohort and Tissue Microarray

This retrospective study was conducted on a consecutive series of primary pure DCIS cases diagnosed, and treated, between 1990 and 2012 at Nottingham City Hospital, Nottingham, UK. Exclusion of referral, miscoded and recurrent cases resulted in 776 cases of pure primary DCIS with available formalin-fixed paraffin embedded (FFPE) tumour blocks for TMA construction. During the same time period, a series of 239 cases diagnosed as synchronous DCIS and invasive tumours (mixed DCIS and IBC) was also collected for comparison. Patients' demographic information, histopathological parameters, surgical management, radiotherapy and patient outcome data were collated. Tumour size was the sum of the primary excision and the re-excision tumour size (mm). Tumour grade was classified according to the three-tier nuclear grading system; low, intermediate and high nuclear grades²⁵. Local recurrence free survival (LRFS) was calculated based on the time (in months) from the date of primary surgical treatment to the time of ipsilateral local recurrence. Patients who developed contralateral disease following DCIS diagnosis were censored at the time of diagnosis of the contralateral cancer.

The median follow-up period in the pure DCIS cohort treated with breast conserving surgery was 118 months (range 2 to 240 months), during which 75 patients (12%) developed ipsilateral local recurrence including invasive carcinoma in 48 (62%). Of the 308 patients treated with breast conserving surgery alone, there were 67 recurrences (22%), of which 38 (57%) cases were invasive recurrences. Among the 93 cases treated with breast conserving surgery and radiotherapy, there were 8 recurrences (9%) (two invasive and six DCIS).

Tissue microarrays (TMAs) were prepared from representative DCIS lesions of the pure cases and from DCIS and invasive tumours from the mixed cases as previously described²⁶. The TMA was constructed using 3D Histech® Grand Master®, Budapest, Hungary, whereby representative cores of 1 mm and 0.6 mm from appropriate viable tumour area were taken from DCIS and invasive tumour samples respectively, avoiding scanty, single focus, necrotic tumour zones and thinner tumour blocks than 4 mm. Each case was represented by a single core biopsy; however, cases with more than one histologic tumour type were represented by more than one core.

Immunohistochemistry and Chromogenic in Situ Hybridisation

The expression of ER, PR, HER2 and Ki67 was evaluated using IHC on the TMA sections. Positive and negative controls were included in every assay (supplementary material). MIB1 antibody was used for evaluation of Ki67 expression. Nuclear staining was scored for ER, PR and Ki67 and membrane staining for HER2. HER2 status was assessed using HercepTest scoring method²⁷ where 0 (no membrane staining or incomplete staining of < 10% of cells), 1+ (weak or moderate incomplete membrane staining of > 10% cells), 2+ (strong, complete membrane staining in ≤10% of tumour cells or weak/moderate complete membrane staining in ≥10% of tumour cells), or 3+ (strong, complete membrane staining in >10% of tumour cells). HER2 status was considered negative if the immunohistochemical score was 0 or 1+, equivocal if the score was 2+, and positive if the score was 3+.

In equivocal cases, *HER2* gene amplification was determined by chromogenic *in situ* hybridisation (CISH). This was performed using the ZytoDot 2C SPEC ERBB2/CEN 17 Probe Kit, Germany. Interpretation of CISH was performed using a Nikon microscope equipped with a x63 objective lens. At least 20 malignant, non-overlapping cell nuclei were scored to assess *HER2* gene copy number. Chromosome 17 (represented by the red signals) was used as an internal control particularly in the low *HER2* gene copy number cases as per the recommended protocol. *HER2* gene amplification was defined as six or more signals per nucleus or when clusters (clumps of aggregated green signals) were identified in the cell nuclei in more than 50% of tumour cells²⁸. If the average copy number was ≥4 to <6 per nucleus (equivocal), another 20 tumour cells were enumerated, and the final average copy number of the case was calculated from the total of 40 cells. In cases with multiple cores (n=26), HER2 score was initially obtained by IHC followed by confirmation with CISH to reach the final status of the case (**Supplementary table 1**).

For ER and PR, a 1% cut-off value was used to dichotomise cases into positive and negative²⁹. For Ki67 the cut-off for differentiating low and high proliferative groups was 14%³⁰.

Statistical analysis:

Statistical analyses were performed using SPSS v24 (Chicago, IL, USA) for windows. Association between final HER2 status and clinicopathological parameters using categorised data in the pure DCIS cohort was evaluated using Chi-squared test. Survival rates were determined using the Kaplan–Meier method and compared by the log-rank test. Multivariate survival analyses using Cox

proportional hazard regression model was used to evaluate the associations between independent variables and local recurrence. Multivariable hazards ratio and their corresponding 95% confidence intervals (CI) were initially performed for each marker alone and then for the combination of biomarkers. All tests were 2-tailed and a p value of less than 0.05 was considered as statistically significant.

RESULTS

A total of 651 cases of pure DCIS patients (**Supplementary Table 2**) and 217 cases mixed with invasive carcinoma were suitable for analysis. When pure DCIS was compared to DCIS mixed with invasive disease, mixed DCIS was of higher nuclear grade with comedo necrosis ($p < 0.0001$).

Assessment of HER2 status

In the pure DCIS group, 20% of cases were HER2 positive. Immunohistochemistry for HER2 was scored as 3+ in 9%, 2+ in 15% and 0 or 1+ in 76% (**Table 1**). All 3+ cases showed *HER2* amplification with CISH. 73% of 2+ cases showed *HER2* amplification (4 cases in which CISH could not be assessed due to technical issues and were excluded) (**Figure 1**). CISH confirmed high copy number of *HER2* gene in all IHC 3+ cases. Of the 493 cases with 0/1+ score using IHC, only one case showed *HER2* amplification. When IHC results were assessed with the exclusion of equivocal (2+) tumours, agreement between IHC and CISH in 0, 1+ and 3+ cases was 99.7% (κ -coefficient = 0.997) (**Table 1** and **Supplementary Table 3**). Interestingly, when the overall rate of positivity was analysed over the period of the study, the frequency of positivity reduced from 30% in the 1990s to 20% in 2012 (**Figure 2**).

Twenty-six cases had multiple cores across the TMAs, of which 15 were concordant for IHC and CISH (13 for IHC 0/1+ and 2 for IHC 2+). Of the 11 cases with discordant IHC, which included all possible pairwise combinations of 0/1+, 2+ and 3+, the CISH results were consistent across the cores, indicating a greater reliability of CISH over IHC in detecting true amplification particularly in heterogeneous cases as well as in limited samples such as core biopsies.

In mixed DCIS and invasive carcinoma cases, the DCIS component was HER2 positive in 15% and the invasive component in 12% ($p = 0.051$, **Table 2** and **Supplementary Tables 4 to 7**). All 8 discordant cases had extensive DCIS; 6 of them were of high grade and ER positive.

Correlation with clinicopathological parameters and molecular biomarkers

In pure DCIS, HER2 positivity was associated with larger tumour size, high nuclear grade, comedo type DCIS, negative hormone receptor status, high Ki67 proliferation index and abnormal expression of p53 (all $p < 0.0001$). HER2 positive cases were more frequent in patients treated by mastectomy ($p = 0.001$) (**Table 3**).

Associations with outcome

Nuclear grade, comedo necrosis and margin width were individually associated with the development of all ipsilateral recurrences ($p=0.023$, 0.013 , 0.029 respectively). When recurrences were stratified into *in situ* and invasive recurrences, HER2 was associated with the development of DCIS local recurrence. Patients with HER2+/Ki67-high DCIS had a high likelihood of developing invasive local recurrence ($p=0.004$). On multivariable analysis, patients with HER2+/Ki67-high DCIS had a hazard ratio of 2.5 (95% CI: 1.7 – 55.0, $p=0.006$), compared to women with other profiles. (Table 4).

DISCUSSION

HER2 status can be detected by analysing the number of gene copies or measuring the amount of protein expression. The most widely used methods at present are IHC, FISH and CISH due to their propensity in evaluating HER2 in formalin-fixed paraffin-embedded (FFPE) tissues in invasive carcinoma³¹. Most HER2 studies have been performed by IHC, which is widely accessible, easy to perform at a reasonable cost and is appropriate for initial HER2 assessment³². However, in cases with an IHC score of 2+, the inter-observer agreement is poor, and the predictive value is unsatisfactory for clinical use. This led to the recommendation of additional testing measuring *HER2* gene copy number status using an *in situ* hybridisation technique such as FISH or CISH to avoid inaccurate prognostication and inappropriate treatment^{32,33}.

Although FISH is a fairly objective and quantitative procedure in detecting *HER2* gene amplification, it has many drawbacks including its cost, the essential need for a fluorescence microscope, its temporary signal which requires a special camera, and is technically challenging with TMA preparations³⁴. CISH is an alternative *in situ* hybridisation method to analyse gene amplification³⁵. It requires an ordinary bright field microscope and the method is less cumbersome and more economical with permanent signal intensity. Pathologists are able to correlate findings with the underlying tumour histo-morphology. Furthermore, several studies have demonstrated good correlation between CISH and FISH results^{36,37}. CISH is either performed as dual colour or single colour with an advantage of the latter over the former in being easy to count signals especially in amplified cases³⁸.

To the best of our knowledge, this is the first study to assess HER2 in DCIS using *in situ* hybridisation. In this study, similar to a previous study, but in invasive tumour³¹, the concordance between 3+ IHC and CISH-amplified cases was 100%, denoting all HER2 over-expressing cases as having *HER2* gene amplification. In contrast, the proportion of 2+ IHC that were *HER2* amplified, as detected by CISH, was 73.5%, which is lower than previously reported (93%)³⁹. The 26.5% (26/98) IHC-equivocal/*HER2* non-amplified tumours in this study, all of which had 2+ IHC scores, is higher than the result obtained by other studies on invasive tumours⁴⁰⁻⁴². The concordance between 0/1+ IHC and *HER2* non-amplified tumours was 99.7%. A similar finding was reported by Zhao and colleagues and they considered that there is a small undetermined percentage of amplified *HER2* without protein over-expression⁴⁰. The same study and other FISH studies on invasive carcinoma

also reported rare 3+ IHC tumours that were non-amplified⁴⁰⁻⁴³, however, we did not detect any such cases.

The low-amplified *HER2* category (≥ 4 to <6 CISH signals) was the most difficult to interpret, requiring an accurate enumeration of gene copy and addition of more tumour cells to assess the final status. This step was particularly important because these cases could either resolve as amplified (4/7) or non-amplified (3/7). Signal clustering, more probably a result of intra-chromosomal amplification of homogeneously staining regions, was immediately evident in highly amplified cases and was easily evaluated.

We observed a lower *HER2* expression in DCIS compared to the previously published literature^{1, 15}. This might be related to the increasing detection of low and intermediate grade DCIS by screening mammography. In support of this the *HER2* positivity was higher (30%) in the earlier period of the study and declined over time to 20%. (**Figure 2**).

The question of whether or not TMA cores are representative of whole tumours is frequently raised, as some tumours are heterogeneous and so a small sample of tissue may not always display the same biological characteristics as a larger section³⁴. To increase the credibility of the TMA technique while reducing the probability of error associated with the difficulty of obtaining a representative sample, some studies use multiple cores from the same donor tissues as it has been reported that only a few (up to four) cores are required to achieve a 100% agreement⁴⁴. However, even when as many as 10 tissue cores are taken from a tumour, some disagreement may be noted^{45, 46}. In the current study, 1 mm diameter cores were used to construct the TMA of the pure DCIS tumours, increasing the probability of accurate sampling by taking large TMA cores. In cases with multiple cores, the initial *HER2* status was assessed at the protein level followed by confirmation with *in situ* hybridisation. The high agreement rate between IHC and CISH results suggests that it is possible to apply TMAs to DCIS research, with the caveat that, for *HER2*, the CISH results may be more reliable, countering the discrepancy that can be observed in IHC for either technical or biological reasons.

Our subsequent goal in this study was to assess the role of *HER2* in progression of DCIS. *HER2* positive DCIS was associated with predictors of local recurrence like larger tumour size, high nuclear grade, comedo type DCIS, negative hormone receptor status and high Ki67 proliferation index, which was consistent with other studies^{12, 47-51}. Local recurrence (invasive or DCIS) was associated with higher grade, comedo necrosis and margin status. DCIS local recurrence was associated with *HER2* positivity and invasive local recurrence was associated with tumour size. Similar to some studies, *HER2* positive tumours were associated with DCIS local recurrence^{52, 53}.

DCIS patients with *HER2* amplification had higher nuclear grade lesions and therefore are probably at risk of relapse more frequently than the *HER2* unamplified group, but the prognostic role of *HER2* over-expression in DCIS is still not fully clarified. Some studies suggest that patients with *HER2* amplified DCIS are more frequently high nuclear grade and this aspect is related to an increased risk of relapse^{54, 55}. In fact, some studies suggest that *HER2* plays a major role in the transition from DCIS

to IDC^{18,56}, while others do not support this^{9,57}. In the current study, *HER2* amplification was more frequent in the pure DCIS cohort (20%) than in the mixed DCIS (15%) despite the more prevalent higher-grade DCIS in the mixed cases. *HER2* positivity alone was not predictive of recurrence as a whole or as invasive disease but showed a trend to DCIS recurrence. This result is consistent with our observation that *HER2* positive DCIS tend to extend within the ductal system and even in the epidermis (Paget's disease) than associated with invasive disease. It is our personal observation that when *HER2* positive DCIS is associated with early invasion, that invasive disease may show aggressive features. Currently *HER2* positive invasive tumours are treated more aggressively regardless of its size⁵⁸. This may suggest that *HER2* positive DCIS tumour cells although highly proliferative are not highly invasive, whilst those that acquire invasive properties became aggressive and can metastasise.

In order to improve the risk stratification and therefore treatment recommendations, there is a need to identify potential predictors of invasive and/or non-invasive recurrence following conserving breast surgery. *HER2*/*Ki67* positivity was a predictor of recurrence, independent of other studied clinicopathological parameters such as nuclear grade and presence of comedo necrosis. In contrast to a previous study⁵⁹, the combination of ER status with *HER2* and *Ki67* further added additional predictive information. This difference may be due to the differences in patient populations, or to differences in the coding of *HER2* positivity. The previous study coded DCIS lesions with equivocal immunostaining for *HER2* (score of 2+) as positive. We performed *in situ* hybridisation on all equivocal cases and only lesions with amplification were coded as *HER2* positive.

In the present study, *HER2* expression in the invasive component was seen less frequently as compared to the DCIS component adjacent to invasive carcinoma and pure DCIS although this was of borderline statistically significant. Similarly, other studies^{54,60} have observed that *HER2* positivity is often in patients with pure DCIS compared to those with microinvasive or invasive carcinoma. As it has been reported that patients with *HER2*+ invasive cancer have a poorer prognosis than those whose tumours do not express *HER2*⁶¹, the higher incidence of expression found in DCIS may therefore seem paradoxical. It was postulated that *HER2* expression happens during the process of atypical hyperplasia in DCIS, and loss of *HER2* expression occurs as DCIS develops into invasive disease. Another hypothesis is that *HER2* overexpression in invasive carcinoma does not develop from DCIS but from the associated atypical hyperplasia^{62,63}. Another theory explaining this phenomenon is that most invasive cancers develop from DCIS tumours which have low expression of *HER2* but are highly proliferative⁵⁴. Because such tumours progress rapidly, they are in the DCIS stage for only a short period and would therefore be under-represented in population samples⁵⁴.

In summary, CISH is a promising, practical test that can be used in conjunction with IHC to determine *HER2* status in DCIS. IHC is easy to perform, relatively inexpensive, and able to detect a majority of breast cancer patients whose tumours have negative (0 or 1+) or positive (3+) *HER2* status. This IHC/CISH test stratification not only identifies the IHC borderline cases, but also keeps testing costs

for HER2 status at a reasonable minimum. As HER2 status is not currently routinely measured in clinical practice, we aimed to show statistically significant correlations between the development of local recurrence as well as poor prognostic pathologic factors and HER2 positive DCIS which could alert clinicians. Our results might suggest considering routine assessment of HER2 in DCIS, similar to invasive breast cancer.

We also confirmed the suitability of the TMA technique for assessment of *HER2* gene amplification status in tumours arising from different patients, while maintaining a representative tissue sample in each case, with good reproducibility and credible results.

To conclude, the frequency of HER2 positivity, driven by gene amplification, in DCIS is comparable to IBC and in combination with Ki67, is an independent predictor of recurrence. Our results suggest the consideration of routine assessment of HER2 status for DCIS, as it is commonly done for IBC.

Limitations of the study

This study has been conducted on TMA sections, which might underestimate the role of tumour heterogeneity. However, all cases in our cohort were carefully reviewed before TMA construction and used multiple cores for cases with heterogeneous morphology. The lower number of radiotherapy-treated cases after BCS was due to the prevalence of mastectomy in the earlier period of the study; which constituted the majority of cases.

Additional information

Ethical approval

This work obtained ethics approval by the North West – Greater Manchester Central Research Ethics Committee under the title; Nottingham Health Science Biobank (NHSB), reference number 15/NW/0685.

Conflict of interest

The authors declare no conflict of interest.

Availability of data and materials

The authors confirm the data that has been used in this work is available on reasonable request.

Funding

This research was supported and funded by the Egyptian Ministry of Higher Education and Scientific Research.

Authors' contributions

Conception and design: Islam M Miligy, Emad A Rakha and Andrew R Green

Cases collection and IHC staining and scoring: Islam M Miligy and Michael S Toss.

Collection and assembly of data: Islam M Miligy, Michael S Toss and Kylie L Gorringe

Data analysis and interpretation: Islam M Miligy, Kylie L Gorringe, Michael S Toss, Andrew H S Lee, Ian O Ellis, Andrew R Green and Emad A Rakha

Manuscript writing: Islam M Miligy, Michael S Toss, Kylie L Gorringe, Andrew H S Lee, Ian O Ellis, Andrew R Green and Emad A Rakha

All authors contributed to writing the manuscript and approved the final version.

Acknowledgment

We thank the Nottingham Health Science Biobank and Breast Cancer Now Tissue Bank for the provision of tissue samples.

REFERENCES

1. Lari SA, Kuerer HM. Biological Markers in DCIS and Risk of Breast Recurrence: A Systematic Review. *J Cancer*. 2011;2:232-61.
2. Narod SA, Iqbal J, Giannakeas V, Sopik V, Sun P. Breast cancer mortality after a diagnosis of ductal carcinoma in situ. *JAMA Oncol*. 2015;1.
3. Rakovitch E, Nofech-Mozes S, Hanna W, Baehner FL, Saskin R, Butler SM, et al. A population-based validation study of the DCIS Score predicting recurrence risk in individuals treated by breast-conserving surgery alone. *Breast Cancer Res Treat*. 2015;152(2):389-98.
4. Bartlett JM, Nofech-Moses S, Rakovitch E. Ductal carcinoma in situ of the breast: can biomarkers improve current management? *Clin Chem*. 2014;60(1):60-7.
5. Fleischer T, Frigessi A, Johnson KC, Edvardsen H, Touleimat N, Klajic J, et al. Genome-wide DNA methylation profiles in progression to in situ and invasive carcinoma of the breast with impact on gene transcription and prognosis. *Genome Biol*. 2014;15(8):435.
6. Burstein HJ, Polyak K, Wong JS, Lester SC, Kaelin CM. Ductal carcinoma in situ of the breast. *N Engl J Med*. 2004;350(14):1430-41.
7. Zhang X, Dai H, Liu B, Song F, Chen K. Predictors for local invasive recurrence of ductal carcinoma in situ of the breast: a meta-analysis. *Eur J Cancer Prev*. 2015.
8. Silverstein MJ. Current controversies in ductal carcinoma in situ of the breast: summary from the Lynn Sage Breast Cancer Symposium. *J Am Coll Surg*. 2003a;197(1):115-8.
9. Borgquist S, Zhou W, Jirstrom K, Amini RM, Sollie T, Sorlie T, et al. The prognostic role of HER2 expression in ductal breast carcinoma in situ (DCIS); a population-based cohort study. *BMC Cancer*. 2015;15:468.
10. Silverstein MJ. The University of Southern California/Van Nuys prognostic index for ductal carcinoma in situ of the breast. *Am J Surg*. 2003b;186(4):337-43.
11. Solin LJ, Gray R, Baehner FL, Butler SM, Hughes LL, Yoshizawa C, et al. A multigene expression assay to predict local recurrence risk for ductal carcinoma in situ of the breast. *J Natl Cancer Inst*. 2013;105(10):701-10.
12. Latta EK, Tjan S, Parkes RK, O'Malley FP. The role of HER2/neu overexpression/amplification in the progression of ductal carcinoma in situ to invasive carcinoma of the breast. *Mod Pathol*. 2002;15(12):1318-25.
13. Allred DC, Clark GM, Tandon AK, Molina R, Tormey DC, Osborne CK, et al. HER-2/neu in node-negative breast cancer: prognostic significance of overexpression influenced by the presence of in situ carcinoma. *J Clin Oncol*. 1992;10(4):599-605.

14. Horimoto Y, Tokuda E, Arakawa A, Kosaka T, Saito M, Kasumi F. Significance of HER2 protein examination in ductal carcinoma in situ. *J Surg Res.* 2011;167(2):e205-10.
15. Roses RE, Paulson EC, Sharma A, Schueller JE, Nisenbaum H, Weinstein S, et al. HER-2/neu overexpression as a predictor for the transition from in situ to invasive breast cancer. *Cancer Epidemiol Biomarkers Prev.* 2009;18(5):1386-9.
16. Allred DC, Anderson SJ, Paik S, Wickerham DL, Nagtegaal ID, Swain SM, et al. Adjuvant tamoxifen reduces subsequent breast cancer in women with estrogen receptor-positive ductal carcinoma in situ: a study based on NSABP protocol B-24. *J Clin Oncol.* 2012;30(12):1268-73.
17. Tamimi RM, Baer HJ, Marotti J, Galan M, Galaburda L, Fu Y, et al. Comparison of molecular phenotypes of ductal carcinoma in situ and invasive breast cancer. *Breast Cancer Res.* 2008;10(4):R67.
18. Williams KE, Barnes NL, Cramer A, Johnson R, Cheema K, Morris J, et al. Molecular phenotypes of DCIS predict overall and invasive recurrence. *Ann Oncol.* 2015;26(5):1019-25.
19. Hanna W, Kahn HJ, Trudeau M. Evaluation of HER-2/neu (erbB-2) status in breast cancer: from bench to bedside. *Mod Pathol.* 1999;12(8):827-34.
20. Jimenez RE, Wallis T, Tabaszka P, Visscher DW. Determination of Her-2/Neu status in breast carcinoma: comparative analysis of immunohistochemistry and fluorescent in situ hybridization. *Mod Pathol.* 2000;13(1):37-45.
21. Perez EA, Cortes J, Gonzalez-Angulo AM, Bartlett JM. HER2 testing: current status and future directions. *Cancer Treat Rev.* 2014;40(2):276-84.
22. Pfitzner BM, Lederer B, Lindner J, Solbach C, Engels K, Rezai M, et al. Clinical relevance and concordance of HER2 status in local and central testing-an analysis of 1581 HER2-positive breast carcinomas over 12 years. *Mod Pathol.* 2018;31(4):607-15.
23. Pothos A, Plastira K, Plastiras A, Vlachodimitropoulos D, Goutas N, Angelopoulou R. Comparison of chromogenic in situ hybridisation with fluorescence in situ hybridisation and immunohistochemistry for the assessment of her-2/neu oncogene in archival material of breast carcinoma. *Acta Histochem Cytochem.* 2008;41(3):59-64.
24. Penault-Llorca F, Bilous M, Dowsett M, Hanna W, Osamura RY, Ruschoff J, et al. Emerging technologies for assessing HER2 amplification. *Am J Clin Pathol.* 2009;132(4):539-48.
25. Lester SC, Bose S, Chen YY, Connolly JL, de Baca ME, Fitzgibbons PL, et al. Protocol for the examination of specimens from patients with ductal carcinoma in situ of the breast. *Arch Pathol Lab Med.* 2009;133(1):15-25.
26. Miligy IM, Gorringer KL, Toss MS, Al-Kawaz AA, Simpson P, Diez-Rodriguez M, et al. Thioredoxin-interacting protein is an independent risk stratifier for breast ductal carcinoma in situ. *Mod Pathol.* 2018.
27. Rakha EA, Pinder SE, Bartlett JM, Ibrahim M, Starczynski J, Carder PJ, et al. Updated UK Recommendations for HER2 assessment in breast cancer. *J Clin Pathol.* 2015;68(2):93-9.
28. Wolff AC, Hammond ME, Hicks DG, Dowsett M, McShane LM, Allison KH, et al. Recommendations for human epidermal growth factor receptor 2 testing in breast cancer: American Society of Clinical Oncology/College of American Pathologists clinical practice guideline update. *J Clin Oncol.* 2013;31(31):3997-4013.
29. Hammond ME, Hayes DF, Wolff AC, Mangu PB, Temin S. American society of clinical oncology/college of american pathologists guideline recommendations for immunohistochemical testing of estrogen and progesterone receptors in breast cancer. *J Oncol Pract.* 2010a;6(4):195-7.

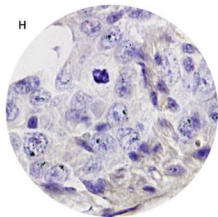
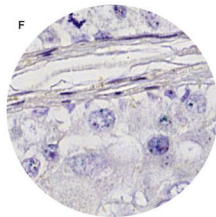
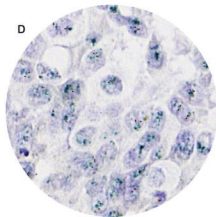
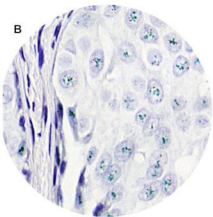
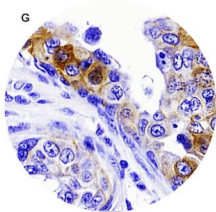
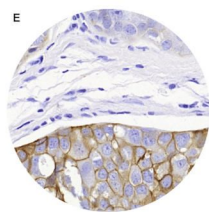
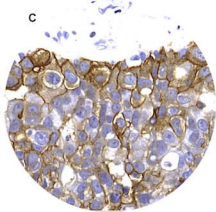
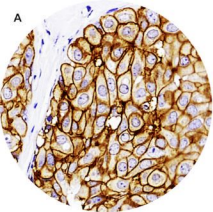
30. Goldhirsch A, Wood WC, Coates AS, Gelber RD, Thurlimann B, Senn HJ. Strategies for subtypes--dealing with the diversity of breast cancer: highlights of the St. Gallen International Expert Consensus on the Primary Therapy of Early Breast Cancer 2011. *Ann Oncol.* 2011;22(8):1736-47.
31. Madrid MA, Lo RW. Chromogenic in situ hybridization (CISH): a novel alternative in screening archival breast cancer tissue samples for HER-2/neu status. *Breast Cancer Res.* 2004;6(5):R593-600.
32. Kakar S, Puangsuwan N, Stevens JM, Serenas R, Mangan G, Sahai S, et al. HER-2/neu assessment in breast cancer by immunohistochemistry and fluorescence in situ hybridization: comparison of results and correlation with survival. *Mol Diagn.* 2000;5(3):199-207.
33. Thomson TA, Hayes MM, Spinelli JJ, Hilland E, Sawrenko C, Phillips D, et al. HER-2/neu in breast cancer: interobserver variability and performance of immunohistochemistry with 4 antibodies compared with fluorescent in situ hybridization. *Mod Pathol.* 2001;14(11):1079-86.
34. Malicka-Durczak A, Korski K, Ibbs M. Comparison of in situ hybridization methods for the assessment of HER-2/neu gene amplification status in breast cancer using a tissue microarray. *Rep Pract Oncol Radiother.* 2012;17(1):44-9.
35. Tabarestani S, Ghaderian SM, Rezvani H. Detection of Gene Amplification by Multiplex Ligation-Dependent Probe Amplification in Comparison with In Situ Hybridization and Immunohistochemistry. *Asian Pac J Cancer Prev.* 2015;16(17):7997-8002.
36. Gong Y, Sweet W, Duh YJ, Greenfield L, Fang Y, Zhao J, et al. Chromogenic in situ hybridization is a reliable method for detecting HER2 gene status in breast cancer: a multicenter study using conventional scoring criteria and the new ASCO/CAP recommendations. *Am J Clin Pathol.* 2009;131(4):490-7.
37. Garcia-Caballero T, Grabau D, Green AR, Gregory J, Schad A, Kohlwes E, et al. Determination of HER2 amplification in primary breast cancer using dual-colour chromogenic in situ hybridization is comparable to fluorescence in situ hybridization: a European multicentre study involving 168 specimens. *Histopathology.* 2010;56(4):472-80.
38. Gruver AM, Peerwani Z, Tubbs RR. Out of the darkness and into the light: bright field in situ hybridisation for delineation of ERBB2 (HER2) status in breast carcinoma. *J Clin Pathol.* 2010;63(3):210-9.
39. Arnould L, Denoux Y, MacGrogan G, Penault-Llorca F, Fiche M, Treilleux I, et al. Agreement between chromogenic in situ hybridisation (CISH) and FISH in the determination of HER2 status in breast cancer. *Br J Cancer.* 2003;88(10):1587-91.
40. Zhao J, Wu R, Au A, Marquez A, Yu Y, Shi Z. Determination of HER2 gene amplification by chromogenic in situ hybridization (CISH) in archival breast carcinoma. *Mod Pathol.* 2002;15(6):657-65.
41. Tubbs RR, Pettay JD, Roche PC, Stoler MH, Jenkins RB, Grogan TM. Discrepancies in clinical laboratory testing of eligibility for trastuzumab therapy: apparent immunohistochemical false-positives do not get the message. *J Clin Oncol.* 2001;19(10):2714-21.
42. Bartlett JM, Campbell FM, Mallon EA. Determination of HER2 amplification by in situ hybridization: when should chromosome 17 also be determined? *Am J Clin Pathol.* 2008;130(6):920-6.
43. Sapino A, Coccorullo Z, Cassoni P, Ghisolfi G, Gugliotta P, Bongiovanni M, et al. Which breast carcinomas need HER-2/neu gene study after immunohistochemical analysis?

- Results of combined use of antibodies against different c-erbB2 protein domains. *Histopathology*. 2003;43(4):354-62.
44. Jourdan F, Sebbagh N, Comperat E, Mourra N, Flahault A, Olschwang S, et al. Tissue microarray technology: validation in colorectal carcinoma and analysis of p53, hMLH1, and hMSH2 immunohistochemical expression. *Virchows Arch*. 2003;443(2):115-21.
 45. Mulrane L, Gallagher WM, O'Connor DP. Assessment of Significance of Novel Proteins in Breast Cancer Using Tissue Microarray Technology. *Methods Mol Biol*. 2017;1501:311-25.
 46. Camp RL, Charette LA, Rimm DL. Validation of tissue microarray technology in breast carcinoma. *Lab Invest*. 2000;80(12):1943-9.
 47. DiGiovanna MP, Chu P, Davison TL, Howe CL, Carter D, Claus EB, et al. Active signaling by HER-2/neu in a subpopulation of HER-2/neu-overexpressing ductal carcinoma in situ: clinicopathological correlates. *Cancer Res*. 2002;62(22):6667-73.
 48. Lebeau A, Unholzer A, Amann G, Kronawitter M, Bauerfeind I, Sendelhofert A, et al. EGFR, HER-2/neu, cyclin D1, p21 and p53 in correlation to cell proliferation and steroid hormone receptor status in ductal carcinoma in situ of the breast. *Breast Cancer Res Treat*. 2003;79(2):187-98.
 49. Claus EB, Chu P, Howe CL, Davison TL, Stern DF, Carter D, et al. Pathobiologic findings in DCIS of the breast: morphologic features, angiogenesis, HER-2/neu and hormone receptors. *Exp Mol Pathol*. 2001;70(3):303-16.
 50. Kuerer HM, Buzdar AU, Mittendorf EA, Esteva FJ, Lucci A, Vence LM, et al. Biologic and immunologic effects of preoperative trastuzumab for ductal carcinoma in situ of the breast. *Cancer*. 2011;117(1):39-47.
 51. Holmes P, Lloyd J, Chervoneva I, Pequinot E, Cornfield DB, Schwartz GF, et al. Prognostic markers and long-term outcomes in ductal carcinoma in situ of the breast treated with excision alone. *Cancer*. 2011;117(16):3650-7.
 52. Rakovitch E, Nofech-Mozes S, Hanna W, Narod S, Thiruchelvam D, Saskin R, et al. HER2/neu and Ki-67 expression predict non-invasive recurrence following breast-conserving therapy for ductal carcinoma in situ. *Br J Cancer*. 2012;106(6):1160-5.
 53. Han K, Nofech-Mozes S, Narod S, Hanna W, Vesprini D, Saskin R, et al. Expression of HER2neu in ductal carcinoma in situ is associated with local recurrence. *Clin Oncol (R Coll Radiol)*. 2012;24(3):183-9.
 54. Rohilla M, Bal A, Singh G, Joshi K. Prediction of heterogeneity in breast cancer immunophenotype at ductal carcinoma in situ stage? *J Cancer Res Ther*. 2016;12(4):1249-56.
 55. Millis RR, Bobrow LG, Barnes DM. Immunohistochemical evaluation of biological markers in mammary carcinoma in situ: correlation with morphological features and recently proposed schemes for histological classification. *Breast*. 1996;14(6).
 56. Burkhardt L, Grob TJ, Hermann I, Burandt E, Choschzick M, Janicke F, et al. Gene amplification in ductal carcinoma in situ of the breast. *Breast Cancer Res Treat*. 2010;123(3):757-65.
 57. Kim JY, Park K, Kang G, Kim HJ, Gwak G, Shin YJ. Predictors of Recurrent Ductal Carcinoma In Situ after Breast-Conserving Surgery. *J Breast Cancer*. 2016;19(2):185-90.
 58. Joerger M, Thurlimann B, Huober J. Small HER2-positive, node-negative breast cancer: who should receive systemic adjuvant treatment? *Ann Oncol*. 2011;22(1):17-23.

59. Kerlikowske K, Molinaro AM, Gauthier ML, Berman HK, Waldman F, Bennington J, et al. Biomarker expression and risk of subsequent tumors after initial ductal carcinoma in situ diagnosis. *J Natl Cancer Inst.* 2010;102(9):627-37.
60. Park K, Han S, Kim HJ, Kim J, Shin E. HER2 status in pure ductal carcinoma in situ and in the intraductal and invasive components of invasive ductal carcinoma determined by fluorescence in situ hybridization and immunohistochemistry. *Histopathology.* 2006;48(6):702-7.
61. Rom J, Schumacher C, Gluz O, Hofler J, Eidt S, Domschke C, et al. Association of HER2 Overexpression and Prognosis in Small (T1N0) Primary Breast Cancers. *Breast Care (Basel).* 2013;8(3):208-14.
62. Hoque A, Sneige N, Sahin AA, Menter DG, Bacus JW, Hortobagyi GN, et al. Her-2/neu gene amplification in ductal carcinoma in situ of the breast. *Cancer Epidemiol Biomarkers Prev.* 2002;11(6):587-90.
63. Mylonas I, Makovitzky J, Jeschke U, Briese V, Friese K, Gerber B. Expression of Her2/neu, steroid receptors (ER and PR), Ki67 and p53 in invasive mammary ductal carcinoma associated with ductal carcinoma In Situ (DCIS) Versus invasive breast cancer alone. *Anticancer Res.* 2005;25(3a):1719-23.

Figure 1: (A and B) DCIS showing HER2 3+ (A) confirmed by CISH (B), (C and D) HER2 2+ (C) showing gene amplification (D), (E and F) HER2 2+ (E) without amplified gene (F), and (G and H) HER2 1+ (G) showing no gene amplification (H).

Figure 2: The rate of HER2 positivity, grade and screen detected DCIS change over time. The graph shows that the rate of high grade DCIS together with HER2 positivity is declining over years in contrast to the rate of screen detected DCIS.



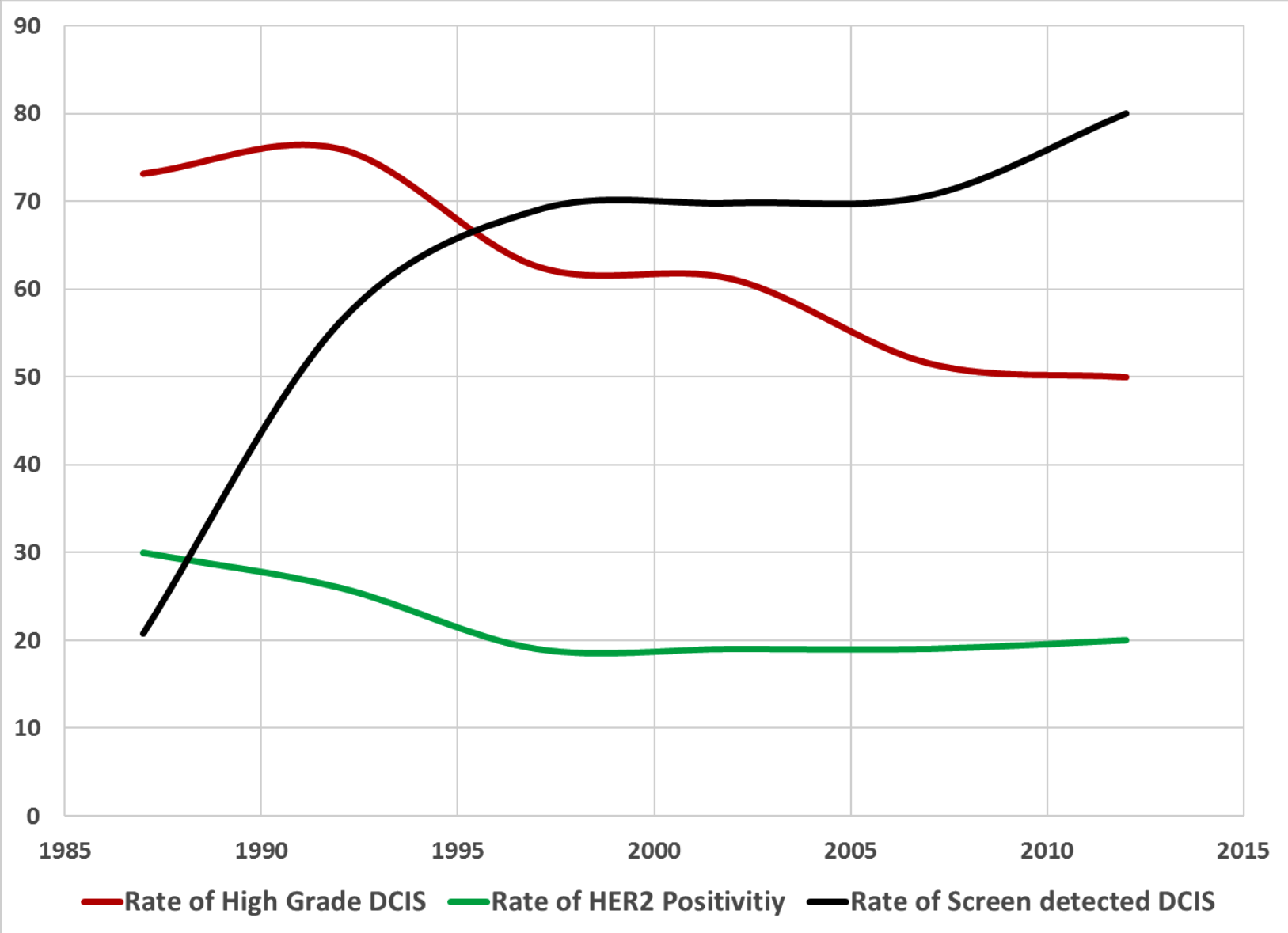


Table 1: HER2 status in pure DCIS cases using IHC and CISH

CISH	HER2 IHC in pure DCIS			
	0/1+ (n=493) (%)	2+ (n=98) (%)	3+ (n=56) (%)	Total (n=647) (%)
Amplified	1 (0.2)	72 (73.5)	56 (100.0)	129 (20.0)
Non-amplified	492 (99.8)	26 (26.5)	0 (0.0)	518 (80.0)

DCIS: Ductal carcinoma in situ, IHC: Immunohistochemistry, CISH: Chromogenic in situ hybridisation.

Table 2: HER2 status in DCIS cases mixed with invasion

A) HER2 status in DCIS cases mixed with invasion using IHC and CISH.

CISH	HER2 IHC DCIS Component				HER2 IHC Invasive Component			
	1+ (n=185) (%)	2+ (n=10) (%)	3+ (n=22) (%)	Total (n=217) (%)	1+ (n=192) (%)	2+ (n=2) (%)	3+ (n=23) (%)	Total (n=217) (%)
Amplified	5 (2.7)	5 (50.0)	22 (100.0)	32 (14.7)	1 (0.5)	1 (50.0)	23 (100.0)	25 (11.5)
Non-amplified	180 (97.3)	5 (50.0)	0 (0.0)	185 (85.3)	191 (99.5)	1 (50.0)	0 (0.0)	192 (88.5)

B) Final HER2 status of DCIS and invasive component of DCIS cases mixed with invasion

DCIS HER2	Invasive HER2		Total N. (%)
	Positive	Negative	
Negative	1	184	185 (85.3)
Positive	24	8	32 (14.7)
Total	25 (11.5)	192 (88.5)	217

DCIS: Ductal carcinoma in situ, IHC: Immunohistochemistry, CISH: Chromogenic in situ hybridisation.

Table 3: Association between final HER2 status and the clinico-pathological parameters of pure DCIS cohort.

Parameter	HER2 Status			χ^2 (p value)
	Total (n=646) n (%)	Positive (n=128) n (%)	Negative (n=518) n (%)	
Age, years*				
Less than 40	22 (3.4)	7 (6)	15 (3)	2.12
Between 40 and 60	376 (58.2)	74 (58)	302 (58)	(0.347)
More than 60	248 (38.4)	47 (36)	201 (39)	
Presentation				
Screening	336 (52)	69 (54)	267 (51)	0.23
Symptomatic	310 (48)	59 (46)	251 (49)	(0.632)
DCIS Size (mm)				
Less than 16	223 (34.8)	27 (22)	196 (38)	20.63
Between 16 and 40	247 (38.5)	47 (37)	200 (39)	(<0.0001)
More than 40	171 (26.7)	52 (41)	119 (23)	
Nuclear Grade				
Low	87 (13.5)	0 (0)	87 (17)	58.58
Intermediate	166 (25.7)	13 (10)	153 (29)	(<0.0001)
High	393 (60.8)	115 (90)	278 (54)	
Comedo necrosis				
Yes	411 (63.8)	111 (87)	300 (58)	36.28
No	233 (36.2)	17 (13)	216 (42)	(<0.0001)
Management				
Mastectomy	339 (52.5)	84 (66)	255 (49)	11.06
Breast Conserving Surgery	307 (47.5)	44 (34)	263 (51)	(0.001)
Radiotherapy				
Yes	95 (14.7)	19 (15)	76 (15)	0.002
No	551 (85.3)	109 (85)	442 (85)	(0.961)
Oestrogen Receptor Status				
Positive	426 (75.3)	45 (40)	381 (84)	88.86
Negative	140 (24.7)	66 (60)	74 (16)	(<0.0001)
Progesterone Receptor Status				
Positive	302 (46.7)	18 (14)	284 (55)	68.51
Negative	344 (53.3)	110 (86)	234 (45)	(<0.0001)
Ki67 Index				
High Proliferative	108 (23.0)	64 (59)	97 (27)	37.46
Low Proliferative	361 (77.0)	45 (41)	263 (73)	(<0.0001)

p value in bold: significant

DCIS: Ductal carcinoma in situ, n: Number

*Age: categorised according to the Van Nuys Prognostic Index (VNPI).

Table 4: Univariate and multivariate analysis

A) Univariate analysis for predictors of local recurrence in pure DCIS patients treated with breast conserving surgery.

Outcome	HR (95% CI)	P value*
All local recurrence		
Tumour size	1.31 (0.36-2.55)	0.098
High tumour grade	3.43 (1.18-9.96)	0.023
Comedo necrosis	3.63 (1.44-7.82)	0.013
Margin width	0.63 (0.34-0.91)	0.029
Radiotherapy	0.95 (0.47-1.91)	0.890
ER status	1.09 (0.58-2.05)	0.777
HER2 status	0.89 (0.45-1.74)	0.734
Ki 67 status	2.61 (0.33-5.01)	0.089
DCIS local recurrence		
Tumour size	1.01 (0.46-2.23)	0.423
High tumour grade	1.90 (0.21-4.72)	0.569
Comedo necrosis	1.24 (0.73-1.99)	0.372
Margin width	1.83 (0.15-11.96)	0.180
Radiotherapy	0.75 (0.35-1.59)	0.459
ER status	0.76 (0.29-1.92)	0.551
HER2 status	2.51 (2.11-11.45)	0.030
Ki 67 status	2.44 (0.13-2.29)	0.067
Invasive local recurrence		
Tumour size	2.63 (1.13-6.09)	0.024
High tumour grade	1.15 (0.25-5.24)	0.871
Comedo necrosis	1.49 (0.814-2.76)	0.194
Margin width	0.69 (0.43-2.47)	0.578
Radiotherapy	1.17 (0.35-3.86)	0.780
ER status	1.01 (0.45-2.65)	0.833
HER2 status	0.49 (0.17-1.41)	0.184
Ki 67 status	1.28 (0.41-3.88)	0.668

B) Multivariate Cox proportional hazards for factors associated with local recurrence in pure ductal carcinoma *in situ* patients.

Variable	HR	95% CI	p-value
Ductal carcinoma <i>in situ</i> size	0.62	0.31-3.47	0.311
Ductal carcinoma <i>in situ</i> Grade	2.21	1.15-70.85	0.031
Comedo necrosis	0.32	0.12-0.87	0.026
Margin width	0.89	0.11-7.46	0.911
HER2+/Ki67-high group	1.52	1.64-60.74	0.001

DCIS: Ductal carcinoma in situ, HR: Hazard ratio, CI: Confidence Interval, ER: Oestrogen Receptor, *P values are corrected according to Bonferroni multiple testing correction; bold facing is significant.

HR: Hazard ratio, CI: Confidence Interval.