



Exoplanet spectroscopy and photometry with the Twinkle space telescope

Billy Edwards¹ · Malena Rice² · Tiziano Zingales³ · Marcell Tessenyi^{1,4} · Ingo Waldmann¹ · Giovanna Tinetti^{1,4} · Enzo Pascale^{5,6} · Giorgio Savini^{1,4} · Subhajt Sarkar⁶

Received: 25 May 2018 / Accepted: 14 November 2018 / Published online: 08 December 2018
© The Author(s) 2018

Abstract

The Twinkle space telescope has been designed for the characterisation of exoplanets and Solar System objects. Operating in a low Earth, Sun-synchronous orbit, Twinkle is equipped with a 45 cm telescope and visible (0.4 – 1 μm) and infrared (1.3 – 4.5 μm) spectrometers which can be operated simultaneously. Twinkle is a general observatory which will provide on-demand observations of a wide variety of targets within wavelength ranges that are currently not accessible using other space telescopes or accessible only to oversubscribed observatories in the short-term future. Here we explore the ability of Twinkle's spectrometers to characterise the currently-known exoplanets. We study the spectral resolution achievable by combining multiple observations for various planetary and stellar types. We also simulate spectral retrievals for some well-known planets (HD 209458 b, GJ 3470 b and 55 Cnc e). From the exoplanets known today, we find that with a single transit or eclipse, Twinkle could probe 89 planets at low spectral resolution ($R < 20$) as well as 12 planets at higher resolution ($R > 20$) in channel 1 (1.3 – 4.5 μm). With 10 observations, the atmospheres of 144 planets could be characterised with $R < 20$ and 81 at higher resolutions. Upcoming surveys will reveal thousands of new exoplanets,

✉ Billy Edwards
billy.edwards.16@ucl.ac.uk

¹ Department of Physics and Astronomy, University College London, Gower Street, London WC1E 6BT, UK

² Department of Astronomy, Yale University, Steinbach Hall, New Haven, CT 06511, USA

³ INAF, Osservatorio Astronomico di Palermo, 90134, Palermo, Italy

⁴ Blue Skies Space Ltd., 69 Wilson Street, London, EC2A 2BB, UK

⁵ Dipartimento di Fisica, La Sapienza Università di Roma, Piazzale Aldo Moro 2, 00185, Roma, Italy

⁶ School of Physics and Astronomy, Cardiff University, Queens Buildings, The Parade, Cardiff, CF24 3AA, UK

many of which will be located within Twinkle's field of regard. TESS in particular is predicted to discover many targets around bright stars which will be suitable for follow-up observations. We include these anticipated planets and find that the number of planets Twinkle could observe in the near infrared in a single transit or eclipse increases $R > 20$. By stacking 10 transits, there are 1185 potential targets for study at $R < 20$ as well as 388 planets at higher resolutions. The majority of targets are found to be large gaseous planets although by stacking multiple observations smaller planets around bright stars (e.g. 55 Cnc e) could be observed with Twinkle. Photometry and low resolution spectroscopy with Twinkle will be useful to refine planetary, stellar and orbital parameters, monitor stellar activity through time and search for transit time and duration variations (TTVs and TDVs). Refinement of these parameters could be used to in the planning of observations with larger space-based observatories such as JWST and ARIEL. For planets orbiting very bright stars, Twinkle observations at higher spectral resolution will enable us to probe the chemical and thermal properties of an atmosphere. Simultaneous coverage across a wide wavelength range will reduce the degeneracies seen with Hubble and provide access to detections of a wide range molecules. There is the potential to revisit them many times over the mission lifetime to detect variations in cloud cover.

Keywords Twinkle space mission · Exoplanet photometry and spectroscopy · Exoplanet atmospheres · Space telescope

1 Introduction

As of July 2018, over 3700 exoplanets have been discovered (nearly 3000 of which transit their stars) as well as 2700 Kepler candidates yet to be confirmed as planets. On top of this, in the next few years Gaia is anticipated to discover up to ten thousand Jupiter-sized planets [42, 56] whilst TESS is expected to detect thousands of transiting planets of Earth size or larger [5, 48, 58]. Additionally, space surveys CHEOPS [9] and K2 [30], along with ground-based surveys like NGTS [71], ESPRESSO [41], WASP [43], HATNet [3], HATSouth [4], MEarth [39], TRAPPIST [32], CARMENES [46], SPIROU [2] and HARPS [40], will lead to many more transiting exoplanet detections as well as further characterisation of planetary parameters.

1.1 Characterisation of exoplanet atmospheres from space

Whilst many planets have been detected and it is thought that planets are common in our galaxy (e.g. [6, 12, 18, 29, 73]), our current knowledge of their atmospheric, thermal and compositional characteristics is still very limited. Space telescopes such as Hubble and Spitzer, as well as some ground-based observatories, have provided constraints on these properties for a limited number of targets and, in some cases, have identified the key molecules present in their atmospheres whilst also detecting the presence of clouds and probing the thermal structure (e.g. [10, 21, 38, 54, 57, 65, 76]). However, the breadth and quality of currently available data is limited by

the absence of a dedicated space-based exoplanet spectroscopy mission and therefore progress in this area has been slower than desired.

Spitzer is, along with Hubble, part of NASA's Great Observatories Program. Launched in 2003, Spitzer carried an Infrared Array Camera (IRAC), an Infrared Spectrograph (IRS) and a Multiband Imaging Photometer (MIPS). The IRS was split over four sub-modules with operational wavelengths of $5.3 - 40 \mu\text{m}$ [28] and has not been operational since Spitzer's helium coolant was depleted in 2009. Since the cool phase of Spitzer's mission ended, only the IRAC has remained operational, though with reduced capabilities. The Hubble WFC3 currently delivers spectroscopic data at wavelengths shorter than $1.7 \mu\text{m}$. Thus, at the time of writing no space telescope capable of infrared spectroscopy beyond $1.7 \mu\text{m}$ is operational.

The James Webb Space Telescope (JWST) is expected to be launched in March 2021. A Near-Infrared Spectrometer (NIRSpec) and camera (NIRCam) are included within the instrument suite [17] and thus will provide the infrared capability that is currently missing ($0.6 - 5.3 \mu\text{m}$ and $0.6 - 5.0 \mu\text{m}$ respectively). Additionally, the Mid-Infrared Instrument (MIRI) covers the wavelength range $5 - 28 \mu\text{m}$ and is capable of medium resolution spectroscopy whilst the Near-Infrared Imager and Slitless Spectrograph (NIRISS) will cover visible and near infrared wavelengths from $0.6 - 5.0 \mu\text{m}$ [72]. JWST has the capability to view a wide range of exoplanet targets [8, 26, 36]. Although a good fraction of JWST observation time is expected to be allocated for exoplanet science (e.g. [7, 16]), for a space observatory of this scale, over-subscription is likely to be an issue and not all interesting science cases will necessarily require the sensitivity and accuracy of JWST.

Further into the future, the ESA ARIEL space mission will conduct a population survey of the atmospheres of ~ 1000 transiting exoplanets over a wide wavelength range ($0.5 - 7.8 \mu\text{m}$) followed by a detailed study of a few hundred selected planets. ARIEL aims to deliver a comprehensive catalogue of planetary spectra, which will yield molecular abundances, chemical gradients and atmospheric structures [45, 61]. ARIEL is expected to be launched in 2028.

1.2 Twinkle

The Twinkle Space Mission is a new, fast-track satellite designed for launch in early 2022. It has been conceived for providing faster access to spectroscopic data from exoplanet atmospheres and Solar System bodies, but it is also capable of providing spectra of brown dwarfs, bright stars, nebulae and galaxies. Twinkle is equipped with a visible ($0.4 - 1 \mu\text{m}$) and infrared ($1.3 - 4.5 \mu\text{m}$) spectrometer (split into two channels at $2.42 \mu\text{m}$). Twinkle has been designed with a telescope aperture of 45 cm and will operate in a low Earth, Sun-synchronous orbit [31, 51].

Twinkle is a general observatory which is being managed by Blue Skies Space Ltd (BSSL). Scientists will be able to purchase telescope time and Twinkle will provide on-demand observations of a wide variety of targets within wavelength ranges that are currently not accessible using other space telescopes or accessible only to over-subscribed observatories in the short-term future. Whilst it is thought that Twinkle will have considerable capabilities for observing Solar System Objects [19], the focus

of this paper is to explore its spectrophotometry capabilities to observe a variety of exoplanets in the optical and infrared wavelength regimes.

The Exoplanet Light Visible Spectrometer (ELVIS) incorporated into the Twinkle instrumentation is an adapted version of the Ultraviolet and Visible Spectrometer (UVIS) flown on the ExoMars Trace Gas Orbiter. By modifying the grating and its coatings, the optimum spectral range of the instrument will be changed from 0.2 – 0.6 μm to 0.4 – 1 μm [51] with a resolving power $R \sim 250$. Twinkle’s infrared spectrometers will provide $R \sim 250$ for $\lambda < 2.42 \mu\text{m}$ and $R \sim 60$ for $\lambda > 2.42 \mu\text{m}$ [70].

The light entering Twinkle’s telescope will be directed through three entrance slits as it is focused onto the instrumentation. Figure 1 shows the expected angular sizes of Twinkle’s slits for each spectral band. Lenses produce several spectra on the detector, with the spectrum from the star slit in the centre and with three spectra from the background slits on either side [70]. The background slits are utilised to provide spectra of the sky close to the star, permitting subtraction of background light from the planet/star spectra.

For exoplanet observations the cadence will vary depending upon the brightness of the host star. For bright targets, such as 55 Cnc, exposure times of ~ 1 second are required to avoid detector saturation whilst for fainter targets (e.g. GJ 1214) the cadence of Twinkle observations would be of the order of several minutes.

2 Methodology

Here we take the Twinkle design as discussed in [31, 51], and [70]. Twinkle is currently entering a Phase B design review and thus the technical specifications may change. An updated analysis will be published when the design is finalised.

2.1 Twinkle field of regard

Twinkle’s field of regard, the region of sky in which it can be pointed, is a cone, centred on the anti-sun vector and extending to $\pm 40^\circ$ from the ecliptic plane. This

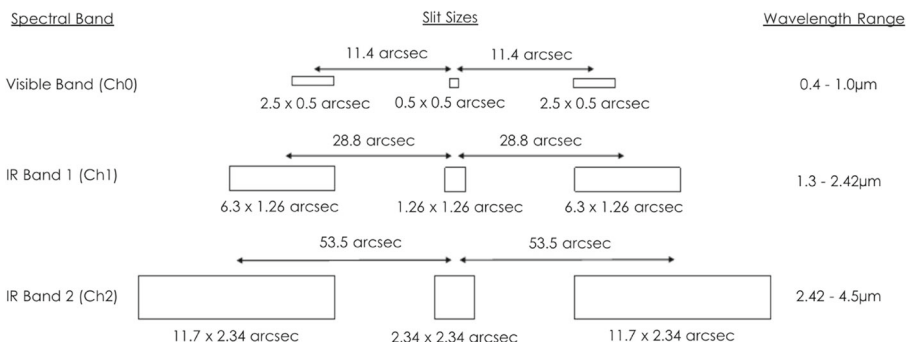


Fig. 1 Angular sizes of Twinkle’s star and background slits. Whilst slit sizes are each to scale, the separation between them is not

field may be extended to up to 60° for a limited number of targets. Twinkle’s sky visibility is therefore similar to that of CHEOPS [13] but is in contrast to TESS [48], JWST [22] and ARIEL [61], all of which have continuous coverage around the ecliptic poles and a partial visibility of the whole sky at lower latitudes. Here, we compare Twinkle’s 40° field of regard to the celestial coordinates of planet-hosting stars to determine the number of known and predicted targets within Twinkle’s view.

Due to Twinkle’s low Earth orbit it will not always be possible to view the transits (or eclipses) in their entirety; instead, partial transits (or eclipses) will often be observed. For instance, Fig. 2 shows modelled light curves for observations of all observable transits of WASP-127b during the year 2021; this includes 12 complete transits along with 6 partial transits. The radiometric model used here calculates the SNR achieved based upon observing a full transit or occultation. A follow-up paper will assess the impact of Earth obscuration and the subsequent effect on the number of potentially observable targets. It should be noted that exoplanet observations with Hubble are similarly restricted by Earth obscuration and that these partial transits will also occur for observations with CHEOPS.

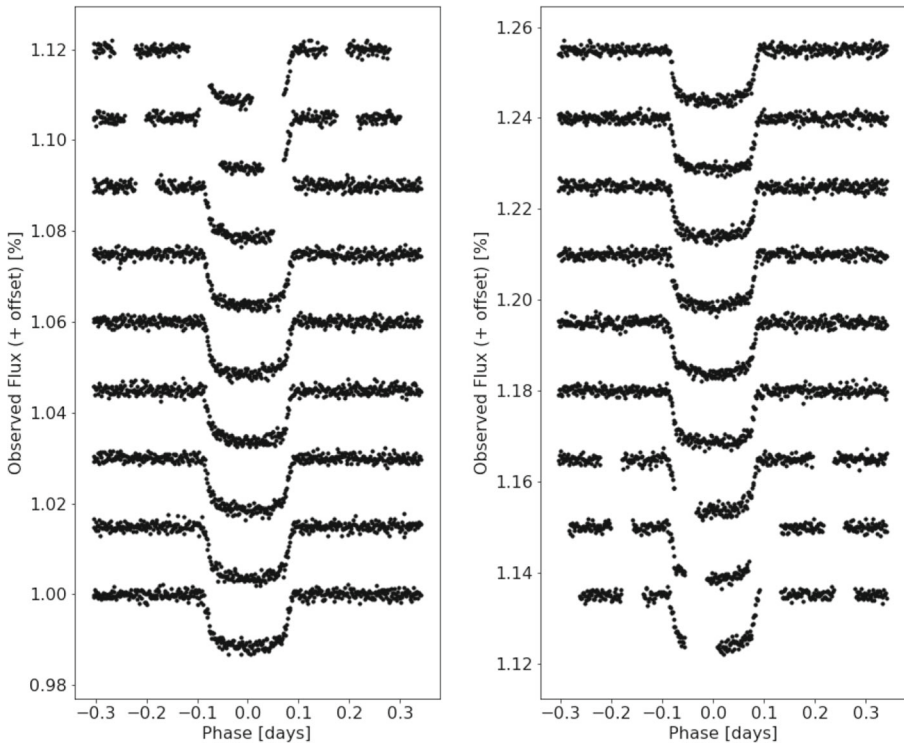


Fig. 2 Modelled observations of partial and full transits of WASP-127 b in channel 1 at $R = 250$ for 2021. Of the 18 available transits in 2021, 12 of them can be observed by Twinkle in their entirety. The assumed stellar and planetary parameters are: $RA = 160.56^\circ$, $Dec = -3.84^\circ$, $R_* = 1.39 R_\odot$, $T_* = 5650$ K, Stellar K Mag = 8.64, $R_p = 15.03 R_\oplus$, $T_p = 1533$ K, Period = 4.18 days

2.2 Observing techniques

Twinkle will enable the study of exoplanets simultaneously at multiple wavelengths through transit, eclipse and phase-curve observations (see e.g. [62] for an overview of the information content of these techniques for atmospheric characterisation). During transit, stellar light can be observed passing through the terminator region of the planet (transmission spectroscopy). Similarly, when the star eclipses the planet (i.e. the planet passes behind its host star in our line of sight) the flux difference resulting from the planet's dayside emission or reflection can be measured (emission or reflection spectroscopy). Phase curves are created by studying photometry of the star-planet system over a large portion of the planet's orbit. Here, we consider transit and eclipse observations which, via spectroscopy, can allow for the atmospheric composition of the planet to be obtained.

Additionally, photometric or low resolution observations in the optical and infrared can be utilised to refine planetary and orbital parameters, monitor stellar activity over time (e.g. [11]) or search for transit time variations (TTVs, [1]) and transit duration variations (TDVs, [33]). TTVs have been extensively used as a valuable technique for finding additional planets within systems and constraining planetary masses and orbits (e.g. [23, 27, 34, 35, 74]). Combined TTV and TDV signals are paramount to search for exomoons [59]. The temporal binning required for Twinkle's observations will depend upon the brightness of the host star but for brighter targets will be very short (<30 seconds) and therefore may be utilised to provide precise measurements of TTV and TDV due to low mass objects present in some planetary systems. For fainter stars, a temporal binning of a few minutes may be required, depending on the wavelength range considered. Whilst other future space facilities may also be able to detect TTV and TDV signals, Twinkle can obtain NIR light curves which exhibit highly reduced distortion from limb darkening and stellar activity. Additionally, multi-colour light curves significantly attenuate degeneracy of fitted limb darkening parameters across all wavelengths. Therefore Twinkle's capabilities for both high and low resolution transit (and eclipse) observations are considered here.

2.3 Acquisition of exoplanet data and missing information

Planetary data was downloaded from NASA's Exoplanet Archive in order to account for all confirmed planets before being filtered such that only transiting planets were considered. The database was last accessed on 31st July 2018. However, the major exoplanet catalogues are sometimes incomplete and thus an effort has been made here to combine them (for a review of the current state of exoplanet catalogues see [15]).

Hence, the data was verified, and in some cases gaps filled, utilising the Open Exoplanet Catalogue [47], exoplanet.eu [52] and TEPcat [55]. If parameter values differed between sources, an average was taken. Planets not included in the NASA Exoplanet Archive were not added to the analysis to ensure that only confirmed planets were utilised.

Unknown parameters were inferred based on the following assumptions:

- If the inclination is known, the impact parameter is calculated from:

$$b = \frac{a \cos(i)}{R_*} \tag{1}$$

- Else, $b = 0.5$ (i.e. the midpoint of the equator and limb of the star)
- Planetary effective temperature (T_p) is estimated from:

$$T_p = T_* \left(\frac{\sqrt{1 - AR_*}}{2a\epsilon} \right)^{1/2} \tag{2}$$

where a greenhouse effect of $\epsilon = 0.8$ and a planetary albedo of $A = 0.3$ ($T_p < 700\text{K}$) or $A = 0.1$ ($T_p > 700\text{K}$) are assumed [53, 60]

- Planetary mass (M_p) was estimated utilising Forecaster [14]
- Atmospheric molecular mass was assumed from planetary class as stated in Table 1.

2.4 Twinkle radiometric model and assessing target suitability

The Twinkle Radiometric Model has been created using the methods described for calculating the signal and noise contributions for other exoplanet infrared spectroscopic missions in [44, 50]. The radiometric model simulates observational and instrumentation effects, utilising target characteristics to assess whether emission or transmission spectroscopy is preferable and to estimate the required number of observations to achieve a desired resolving power and signal to noise ratio (SNR).

The downloaded target information was inserted into the model and the average SNR across each spectrometer for one transit or eclipse was obtained for the maximum resolving power. The resolving power can be decreased from its native value in order to increase the SNR per wavelength bin. Stacking multiple observations

Table 1 Assumed molecular weight by planetary classification

| Planet class | Radius bounds | Mean molecular weight (a.m.u.) |
|--------------|--------------------------------------|--------------------------------|
| Earth | $R_p \leq 1 R_\oplus$ | 18 |
| Super-Earth | $1 R_\oplus < R_p \leq 1.7 R_\oplus$ | 18 |
| | $1.7 R_\oplus < R_p \leq 2 R_\oplus$ | 2.6 |
| Sub-Neptune | $2 R_\oplus < R_p \leq 3.5 R_\oplus$ | 2.6 |
| Neptune | $3.5 R_\oplus < R_p \leq 6 R_\oplus$ | 2.6 |
| Jupiter | $R_p > 6 R_\oplus$ | 2.3 |

increases the SNR of the final dataset and for this exercise the increase in SNR has been calculated from:

$$SNR_N = \sqrt{N} \times SNR_1 \quad (3)$$

where N is the number of observations.

2.5 Future planet discoveries

TESS and other surveys are predicted to discover thousands of planets around bright stars. In the first two years of operation, TESS is anticipated to detect over 4500 planets around bright stars and more than 10,000 giant planets around fainter stars [5]. Here, these predicted TESS planets around brighter stars are incorporated into the analysis to highlight Twinkle's capabilities to study future discoveries. The MAST archive has been utilised to obtain stellar parameters for the host stars of these predicted planets.

2.6 Spectral retrievals

Determining the composition of exoplanetary atmospheres, and thus gaining an understanding of the atmospheric properties, provides insight about the processes occurring on these planets, as well as the presence or absence of clouds – an important constraint to understand atmospheric dynamics. Many molecules have absorption lines within Twinkle's spectral bands including H_2O , carbon-bearing molecules (CO_2 , CO , CH_4 , C_2H_2 , C_2H_4 , C_2H_6), exotic metallic compounds (TiO , VO , SiO , TiH) and nitrogen/sulphur-bearing species (H_2S , SO_2 , NH_3 and HCN).

We have performed several spectral retrieval simulations to assess the information content of the spectra obtainable through Twinkle observations. The known population of exoplanets is diverse and thus to better assess Twinkle's capabilities we focus here on three well known, but very different, planets: HD 209458 b, GJ 3470 b and 55 Cnc e. These planets all orbit very bright stars with K magnitudes of 6.31, 7.99 and 4.02 respectively.

To simulate emission and transmission forward models and atmospheric retrievals we use the open-source exoplanet atmospheric retrieval framework Tau-REx ([68, 69] https://github.com/ucl-exoplanets/TauREx_public). We assume plane parallel atmospheres with 100 layers and include the contributions of collision-induced absorption (cia) of H_2 - H_2 and H_2 -He, Rayleigh scattering and grey-clouds. We use cross-section opacities calculated from the ExoMol database [75] where available and from HITEMP [49] and HITRAN [25] otherwise. We have adopted Tau-REx to simulate retrievals at various resolutions. The assumed planetary characteristics are contained in Table 2. For HD 209458 b we take the atmospheric composition retrieved from observations with Hubble WFC3 [37, 64]. We note that, whilst the spectral range for WFC3 is ideal for detecting water, constraining other molecules is more difficult with many models fitting the data. These degeneracies cause the retrieved abundances to differ from those expected from chemistry models [66].

Table 2 Planetary characteristics utilised for simulating atmospheric retrievals

| Planet | Equilibrium temperature [K] | Clouds? | Mean molecular weight | Molecular abundances (Source) | |
|-------------|-----------------------------|---------|-----------------------|-------------------------------|-----------------------------|
| 55 Cnc e | 2000 | No | 2.33 | CO | 1×10^{-3} [63] |
| | | | | C ₂ H ₂ | 1×10^{-5} |
| | | | | HCN | 1×10^{-5} |
| GJ 3470 b | 700 | Yes | 2.54 | H ₂ O | 1×10^{-2} [67] |
| | | | | CH ₄ | 4×10^{-3} |
| | | | | CO | 1×10^{-3} |
| | | | | NH ₃ | 1×10^{-4} |
| | | | | CO ₂ | 1×10^{-5} |
| HD 209458 b | 1000 | Yes | 2.34 | H ₂ O | 1×10^{-5} [37, 64] |
| | | | | HCN | 1×10^{-6} |
| | | | | NH ₃ | 1×10^{-6} |
| | | | | CH ₄ | 1×10^{-8} |

3 Results

3.1 Targets within Twinkle's field of regard

NASA's Exoplanet Archive contains 2974 known transiting planets (as of July 2018) and Fig. 3 displays the locations of these exoplanets and highlights those within the sweep of Twinkle's field of regard. We note that the original Kepler field (which accounts for 2289 transiting planets) lies far from the ecliptic and thus cannot be observed with a 40° field of regard centred on the anti-sun vector. An extension of the field of regard to 60° from the ecliptic may allow some of these targets to be observed. However, Twinkle is best-suited for observing planets around bright stars and thus is not impeded by being unable to observe planets in the Kepler field which are generally hosted by fainter stars. Of the 685 transiting planets not discovered by the original Kepler mission, 548 lie within Twinkle's field of regard.

The predicted TESS planets are shown in Fig. 3 and we find that of the 4376 targets plotted, 1815 lie within the 40° field of regard of Twinkle. TESS is also predicted to discover more than 10,000 planets around fainter stars and whilst some of these will be within Twinkle's field of regard, many are unlikely to be suitable targets for observation with Twinkle. However, some larger, hotter planets may be observable.

We require that all targets in our study must, as a minimum, have the following known parameters:

- Stellar data:
 - Right ascension and declination
 - Mass
 - Radius

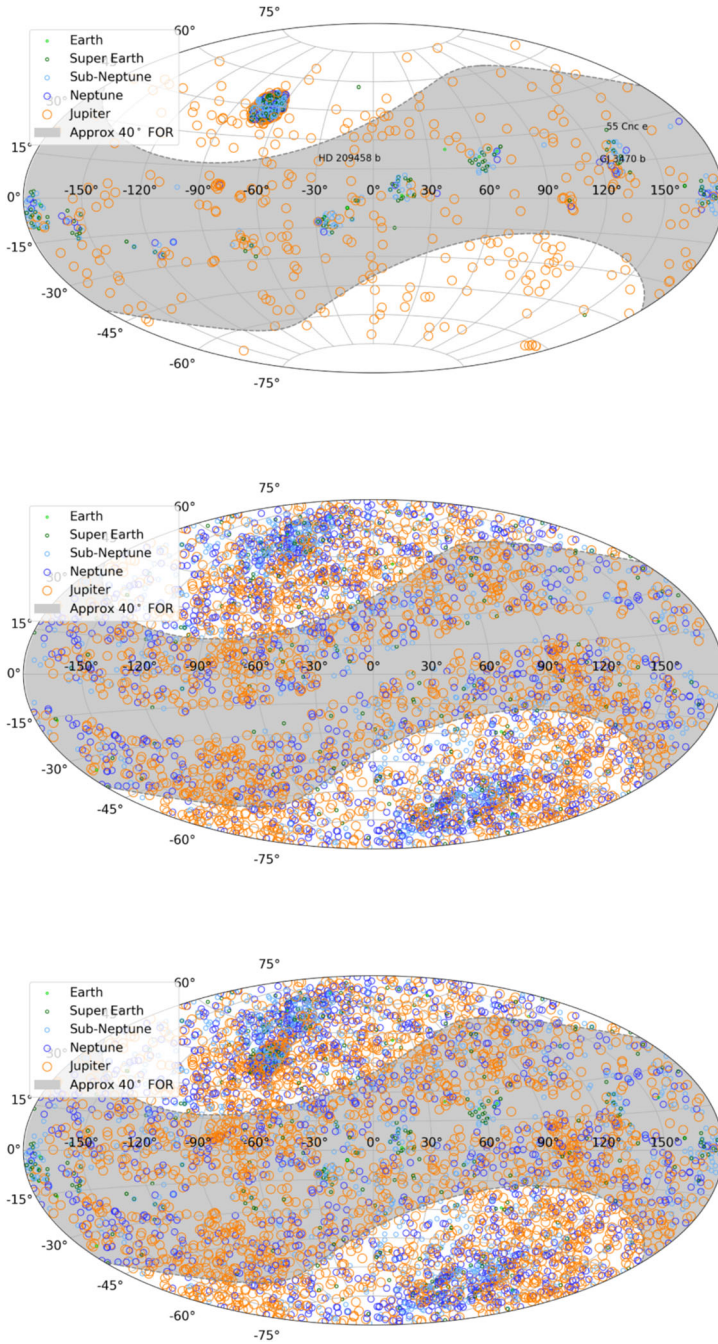


Fig. 3 Top: Currently-known transiting exoplanets, their planetary classification and the sweep of Tinskle’s field of regard. The initial Kepler field is the densely populated region at RA -70° , Dec 45° and the locations of some well-known exoplanets are noted. Middle: Predicted TESS planet detections. Bottom: Currently-known planets and predicted TESS detections

- K Mag
- $3070 \text{ K} < T_* < 7200 \text{ K}$
- Planet data:
 - Radius
 - Period

Of the 548 currently known planets that Twinkle could observe, 530 were sufficiently characterised for inclusion in this analysis. For the simulated TESS planets within Twinkle's field of regard, 1608 could be analysed. Figure 4 shows stellar magnitudes that could currently be probed by Twinkle. Planets are found to be most commonly orbiting stars of with K magnitudes between 9 and 12. The magnitudes of the simulated TESS target stars are also plotted here, and it is clear that many more planets are expected to be found around bright stars within Twinkle's field of regard.

3.2 Potentially observable targets

Defining a requirement for $\text{SNR} \geq 7$, Figs. 5, 6 and 7 display the number of planets that could be observed in channels 0, 1 and 2, at a given resolution, for a given number of transit or eclipse observations. Assuming the same SNR requirement, the resolution achieved over a given number of transits or eclipses is displayed in Figs. 8, 9 and 10 showing the distribution of the radius of observable planets along with the planet's temperature class. The SNR requirement will depend upon the user's preferences and the observations undertaken and therefore should be taken only as an indicative value.

We find that in one observation Twinkle could study 89 known planets and 469 predicted TESS planets in channel 1 with $R < 20$ and 12 known planets and 29 predicted TESS planets at higher resolutions. With ten transits or eclipses, spectroscopy

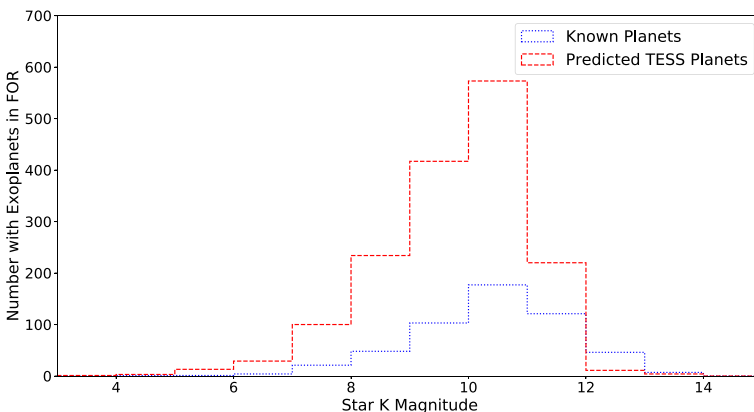


Fig. 4 Stellar brightness in K mag for known planets and predicted TESS detections within Twinkle's field of regard

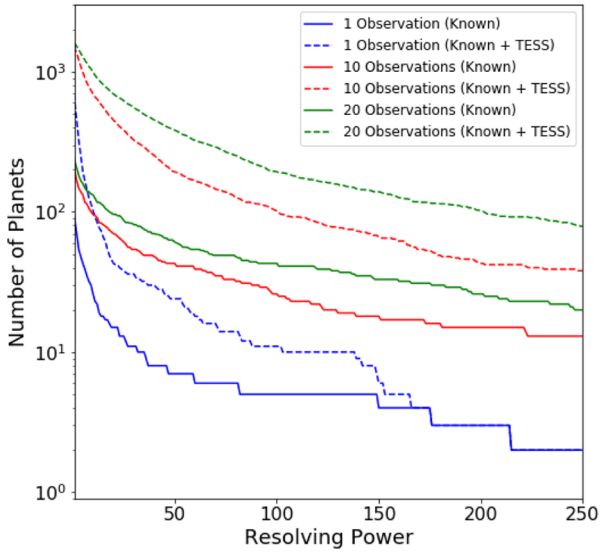


Fig. 5 Number of known and predicted TESS planets with Twinkle's field of regard for which $\text{SNR} \geq 7$ is achievable at a given resolving power in channel 0 ($0.4 - 1.0 \mu\text{m}$)

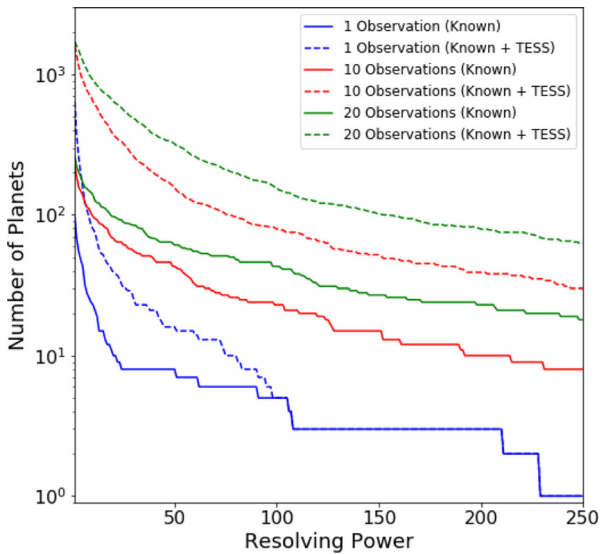


Fig. 6 Number of known and predicted TESS planets with Twinkle's field of regard for which $\text{SNR} \geq 7$ is achievable at a given resolving power in channel 1 ($1.3 - 2.42 \mu\text{m}$)

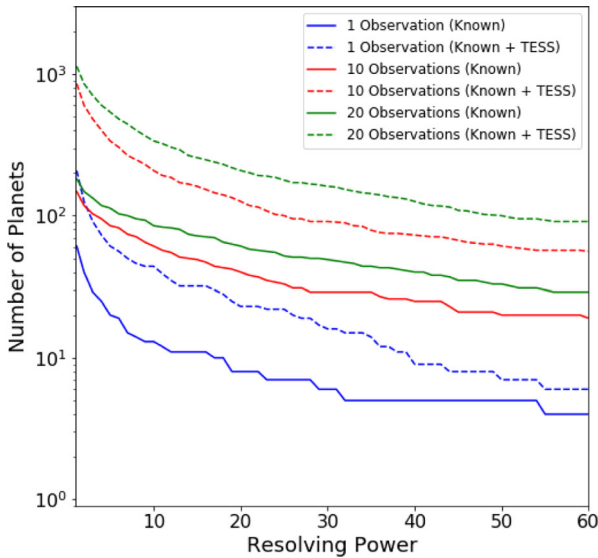


Fig. 7 Number of known and predicted TESS planets with Twinkle’s field of regard for which SNR ≥ 7 is achievable at a given resolving power in channel 2 (2.42 – 4.5 μ m)

is possible for 81 known and 307 TESS planets at $R > 20$, and for 144 known and 1041 TESS planets at lower resolution. In each case the majority of targets are large gaseous planets (e.g. 84.5% Jupiters and 15% Neptunes/Sub-Neptunes for $R > 20$ in 10 observations). With a larger number of observations, the atmospheres of 46 smaller, potentially rocky planets ($R < 1.7R_{\oplus}$) are characterisable using low resolution spectroscopy ($R < 20$) in channel 1 with 20 observations. The relation between stellar magnitude, planetary radius and the achievable resolving power is shown in Appendix A.

3.3 Spectral retrievals

For the three chosen planets, we calculate the resolution achievable to reach an SNR > 7 for each channel with a given number of transits/eclipses and run Tau-REx spectral retrievals with the observation parameters contained in Table 3.

HD 209458 b could be observed, in a single transit, at the highest resolution possible with Twinkle’s instrumentation and the subsequent retrieval correctly identifies the abundances and cloud pressure as shown in Fig. 11 and Table 4. Figure 12 displays the retrieval for GJ 3470 b and it can be seen that after 10 transits, at a resolution in channel 1 similar to the max resolution of Hubble WFC3, the molecular abundance of H₂O, CH₄, NH₃ and CO₂ have been correctly recovered, even with a cloudy atmosphere (assuming a grey cloud with a cloud top pressure of 10 mbar). However,

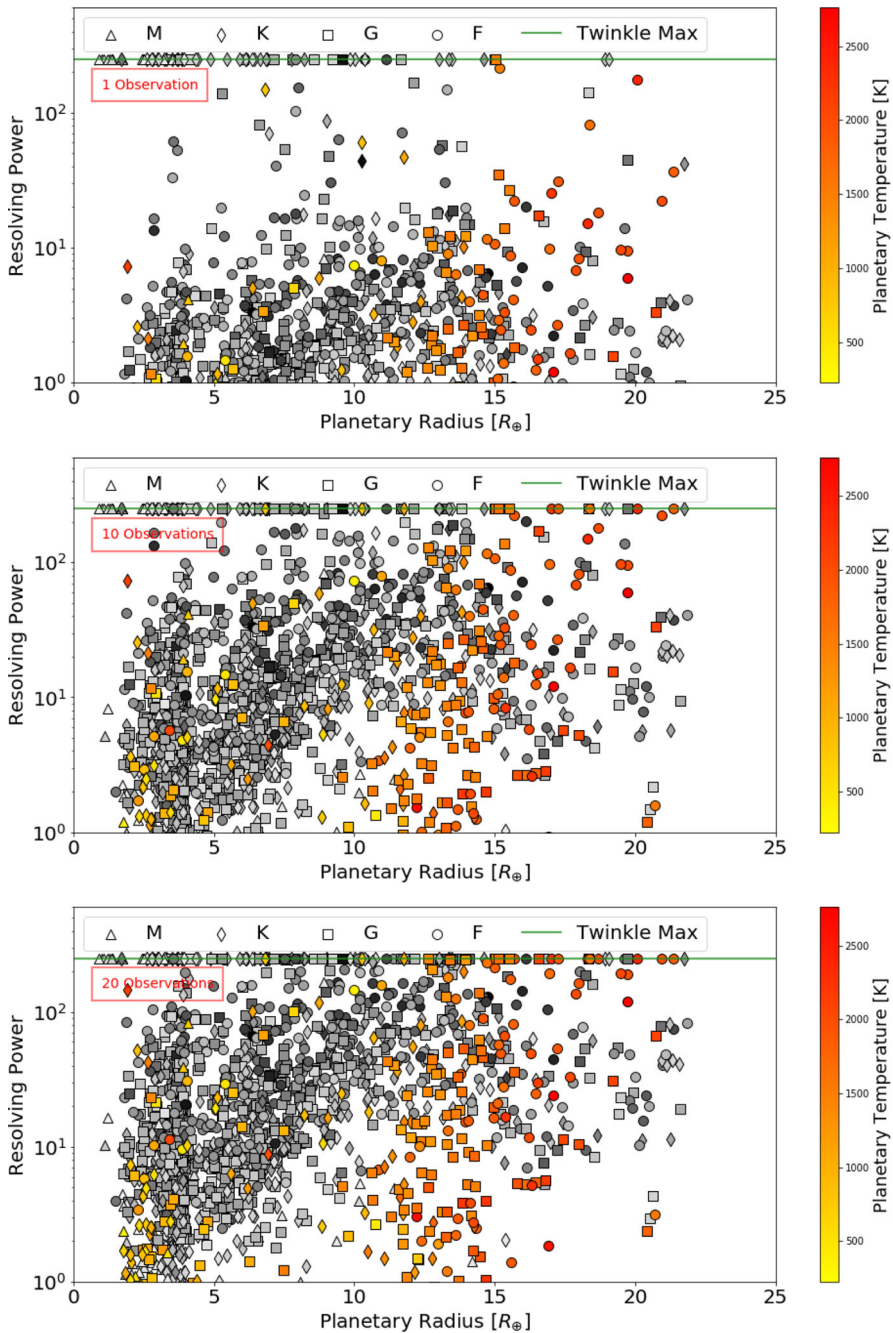


Fig. 8 Achievable resolving power in infrared channel 0 (0.4 - 1.0 μm) for currently known (coloured) and expected TESS planets (grey) assuming a requirement of $\text{SNR} \geq 7$ for a given number of transit or eclipse observations. The shape of the points indicates the stellar type of the host star and the green line represents Twinkle's maximum resolving power in the channel

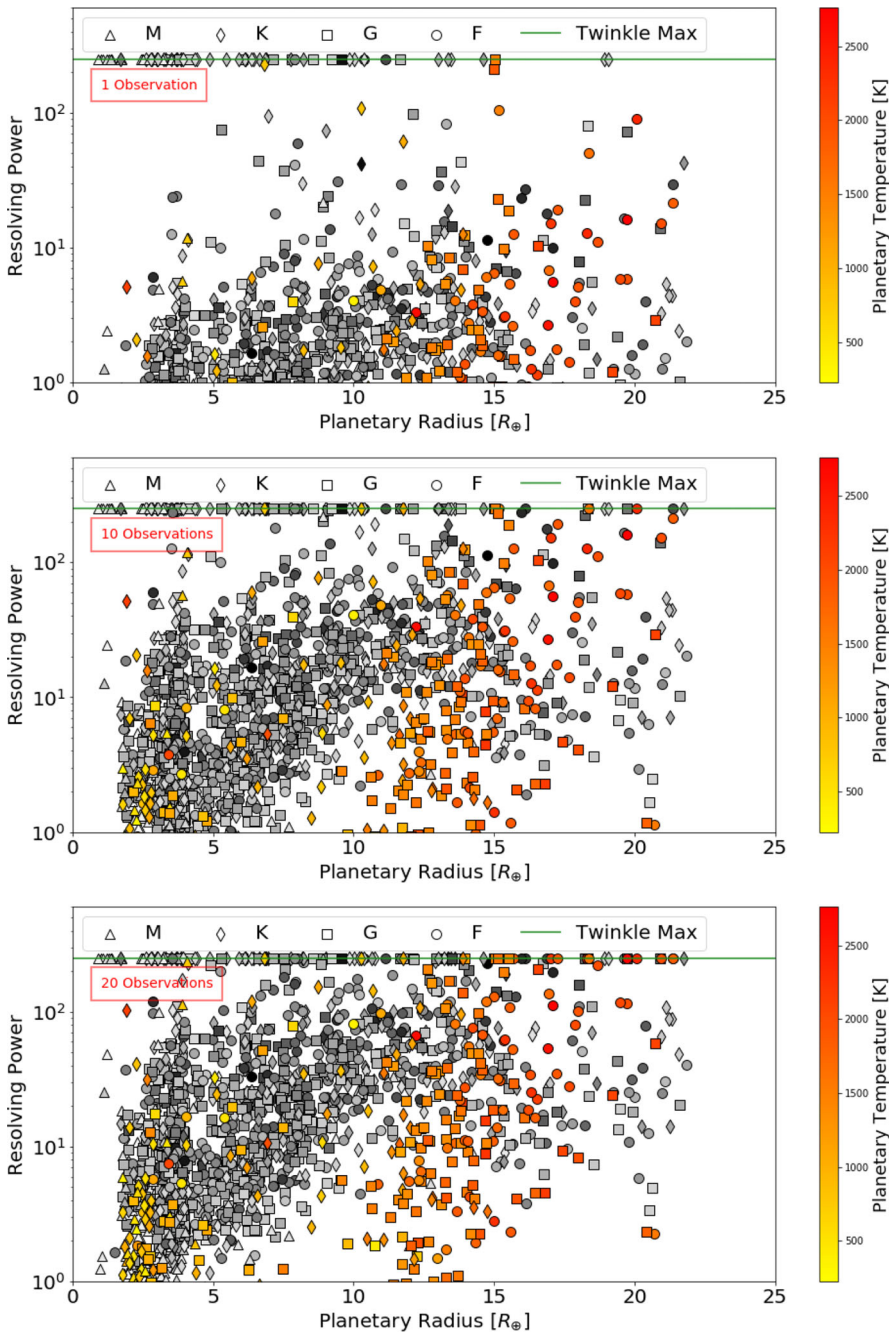


Fig. 9 Achievable resolving power in infrared channel 1 (1.3 – 2.42 μm) for currently known (coloured) and expected TESS planets (grey) assuming a requirement of SNR ≥ 7 for a given number of transit or eclipse observations. The shape of the points indicates the stellar type of the host star and the green line represents Twinkle’s maximum resolving power in the channel

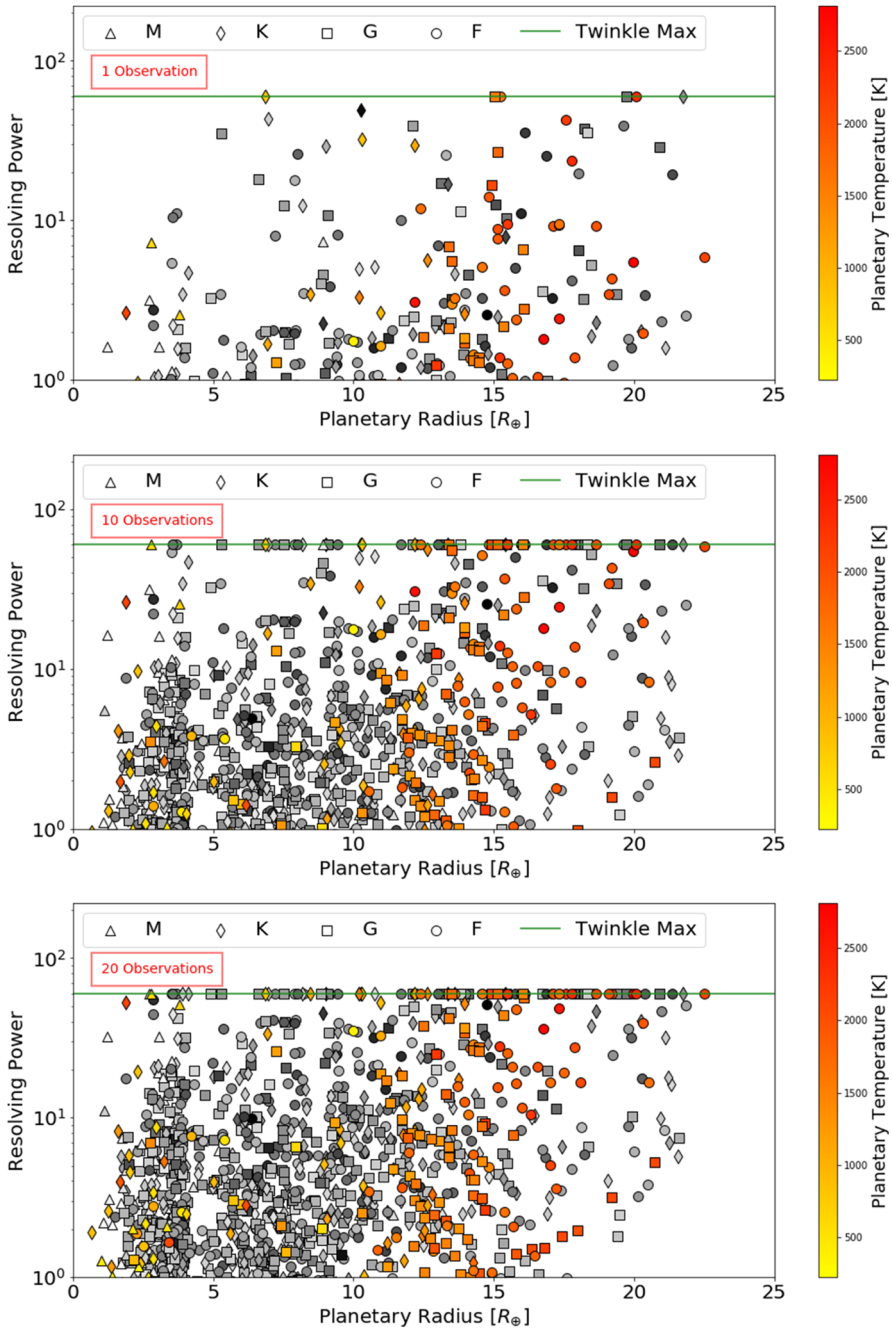


Fig. 10 Achievable resolving power in infrared channel 2 ($2.42 - 4.5 \mu\text{m}$) for currently known (coloured) and expected TESS planets (grey) assuming a requirement of $\text{SNR} \geq 7$ for a given number of transit or eclipse observations. The shape of the points indicates the stellar type of the host star and the green line represents Twinkle’s maximum resolving power in the channel

Table 3 Parameters of the simulated atmospheric retrievals with Tau-REx

| Planet | Number of observations | R ($\lambda < 2.42 \mu\text{m}$) | R ($\lambda > 2.42 \mu\text{m}$) | Observation type |
|-------------|------------------------|------------------------------------|------------------------------------|------------------|
| HD 209458 b | 1 | 250 | 60 | Transit |
| GJ 3470 b | 10 | 65 | 20 | Transit |
| 55 Cnc e | 10 | 10 | 20 | Eclipse |

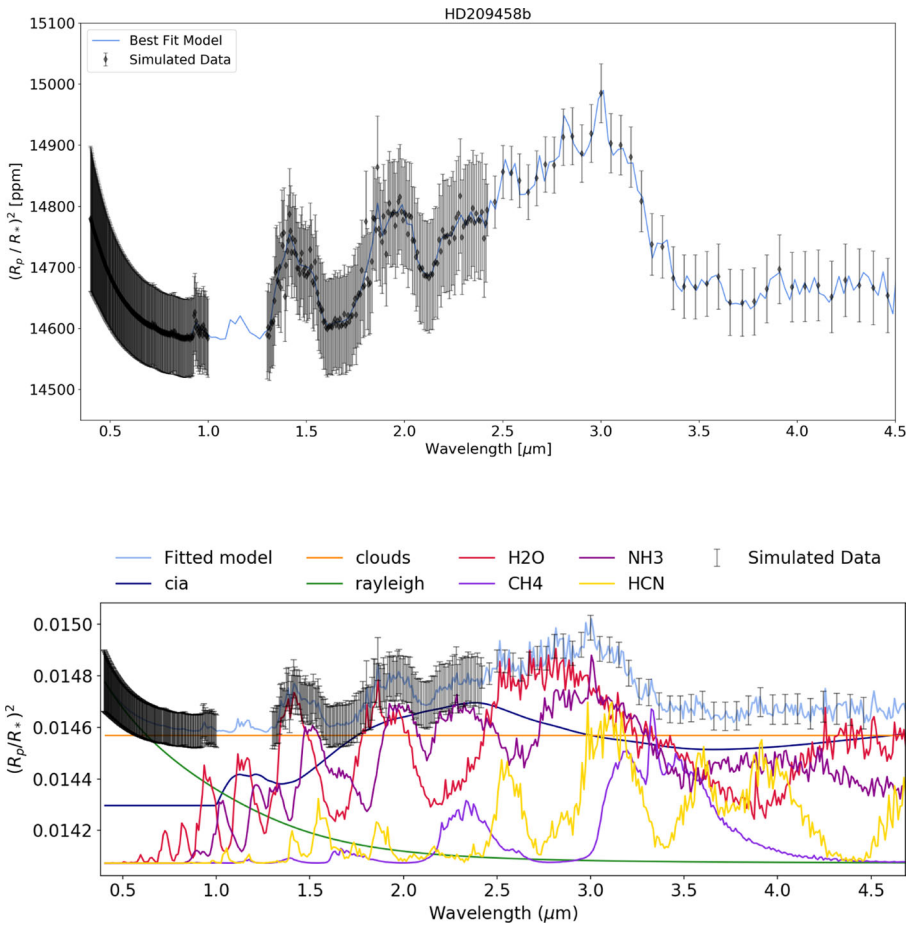


Fig. 11 Spectral retrieval of HD 209458 b (input values: $P_{Clouds} = 1 \times 10^4$ Pa, $H_2O = 1 \times 10^{-5}$, $HCN = 1 \times 10^{-6}$, $NH_3 = 1 \times 10^{-6}$, $CH_4 = 1 \times 10^{-8}$) at $R = 250$ ($\lambda < 2.42 \mu\text{m}$) and $R = 60$ ($\lambda > 2.42 \mu\text{m}$) with 1 complete transit observation which recovers the main molecular composition but does not constrain CH_4 due to the very low abundance of the molecule. The bottom panel shows the individual contributions of each molecule and of Rayleigh scattering, collision induced absorption (cia) and clouds. Note that, as shown in Fig. 2, more than one visit may be required to observe a full transit light curve and that this is the raw performance of the instrument and the plot may not show an optimised setting

Table 4 The original and retrieved abundances for each planet from the simulated retrievals with Tau-REx. We note that we correctly retrieve the abundances for HD 209458 b as well as most of the abundances for GJ 3470 b and 55 Cnc e. However, the CO abundance is not recovered for GJ 3470 b and for 55 Cnc e C₂H₂ is also not constrained. This is due to other molecules obscuring the absorption features as can be seen in the contributions plots in Figs. 12 and 13

| Planet | Molecule | Input abundance (log10) | Retrieved abundance (log10) | Retrieval abundance uncertainty (log10) |
|-------------|-------------------------------|-------------------------|-----------------------------|---|
| HD 209458 b | H ₂ O | -5.00 | -5.02 | +0.17 -0.17 |
| | HCN | -6.00 | -6.09 | +0.33 -0.44 |
| | NH ₃ | -6.00 | -5.98 | +0.14 -0.14 |
| | CH ₄ | -8.00 | -9.61 | +1.54 -1.63 |
| | | | | |
| GJ 3460 b | H ₂ O | -2.00 | -2.03 | +0.36 -0.51 |
| | CH ₄ | -2.40 | -2.45 | +0.37 -0.46 |
| | CO | -3.00 | -7.49 | +3.39 -3.01 |
| | NH ₃ | -4.00 | -4.15 | +0.38 -0.44 |
| | CO ₂ | -5.00 | -5.13 | +0.44 -0.52 |
| | | | | |
| 55 Cnc e | CO | -3.00 | -3.10 | +0.42 -0.41 |
| | HCN | -5.00 | -5.02 | +0.17 -0.17 |
| | C ₂ H ₂ | -5.00 | -7.47 | +2.60 -2.98 |

We note that we correctly retrieve the abundances for HD 209458 b as well as most of the abundances for GJ 3470 b and 55 Cnc e. However, the CO abundance is not recovered for GJ 3470 b and for 55 Cnc e C₂H₂ is also not constrained. This is due to other molecules obscuring the absorption features as can be seen in the contributions plots in Figs. 12 and 13

as shown in Table 4 the CO abundance is not recovered as the strongest CO band accessible to Twinkle is at 4.7 μm which is at the edge of its observable wavelength range and oftentimes masked by other molecular constituents.

Due to its small size, 55 Cnc e is challenging to observe and thus 10 eclipse observations are required to obtain low resolution spectra. Despite this difficulty, Tau-REx

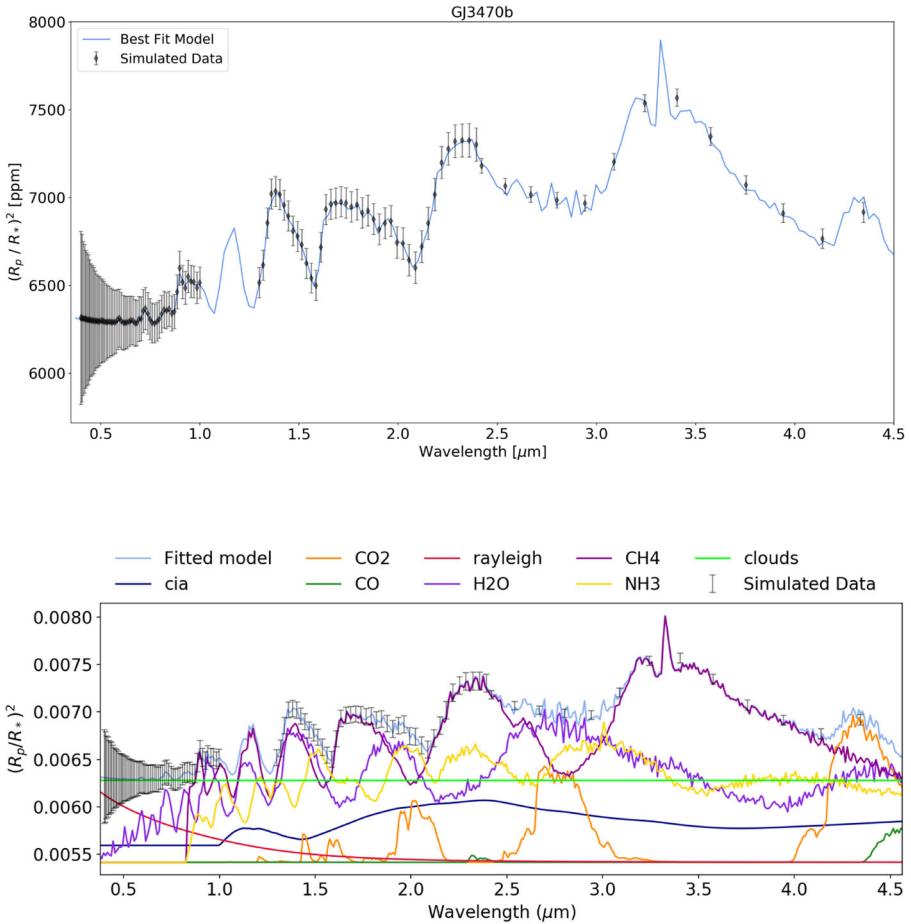


Fig. 12 Spectral retrieval for GJ 3470 b (input values: $P_{Clouds} = 1 \times 10^3$ Pa, $H_2O = 1 \times 10^{-2}$, $CH_4 = 4 \times 10^{-3}$, $CO = 1 \times 10^{-3}$, $NH_3 = 1 \times 10^{-4}$, $CO_2 = 1 \times 10^{-5}$) at $R = 65$ ($\lambda < 2.42 \mu m$) and $R = 20$ ($\lambda > 2.42 \mu m$) with 10 complete transit observations which correctly recovers the major molecular abundances and cloud pressure but does not detect CO. The bottom panel shows the individual contributions of each molecule and of Rayleigh scattering, collision induced absorption (cia) and clouds. Note that, as shown in Fig. 2, more than ten visits may be required to observe ten full transit light curves

retrievals of 55 Cnc e resulted in the main constituents of the simulated atmosphere (CO and HCN) being identified well (Fig. 13 and Table 4). Increasing the number of visits to 20 results in the accurate recovery of the simulated abundances of CO and HCN as well as more accurately retrieving C_2H_2 . The retrievability of C_2H_2 highlights the benefit of higher resolution spectra when measuring abundances of complex carbon molecules. The posterior plot for each of these retrievals is contained Appendix B.

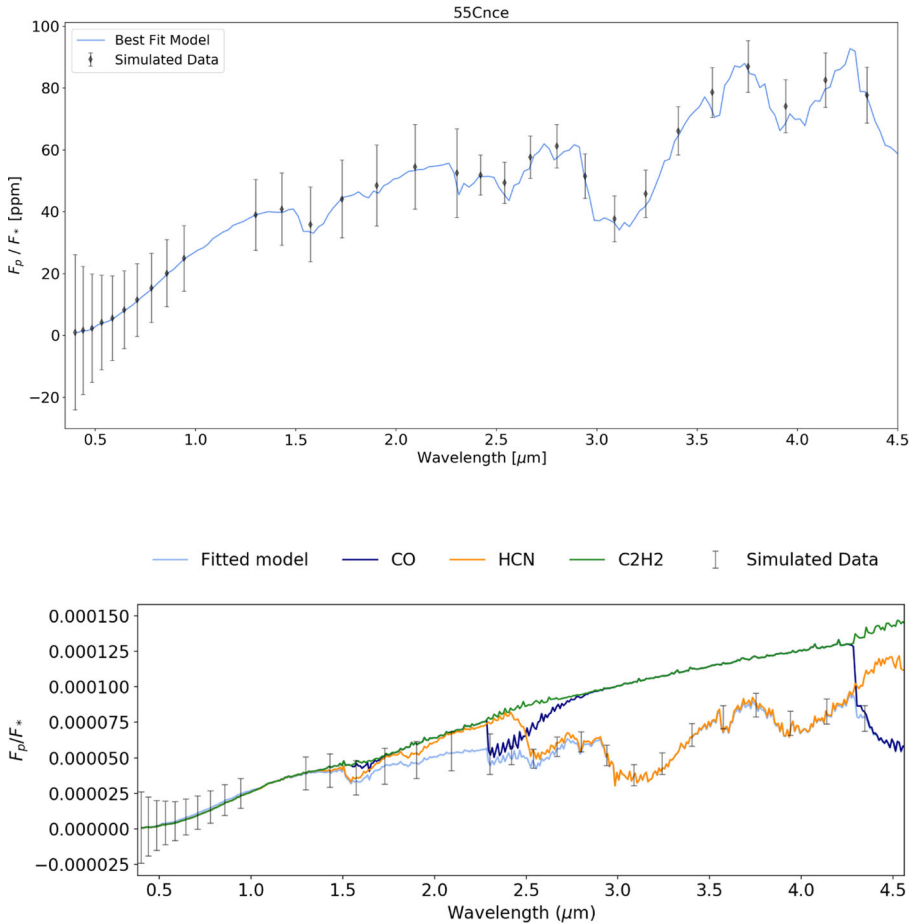


Fig. 13 Spectral retrieval for 55 Cnc e (input values: cloud free, $\text{CO} = 1 \times 10^{-3}$ Pa, $\text{C}_2\text{H}_2 = 1 \times 10^{-5}$, $\text{HCN} = 1 \times 10^{-5}$) at $R = 10$ ($\lambda < 2.42 \mu\text{m}$) and $R = 20$ ($\lambda > 2.42 \mu\text{m}$) with 10 complete eclipse observations which correctly recovers the HCN and CO abundances but does not constrain the C_2H_2 abundance. The bottom panel shows the individual contributions of each molecule and of Rayleigh scattering, collision induced absorption (cia) and clouds. Note that, as shown in Fig. 2, more than ten visits may be required to observe ten full eclipse light curves

4 Discussion

This first iteration of assessing Twinkle's performance for exoplanetary science has shown that many planets are potentially observable with Twinkle. Twinkle is currently entering a Phase B design review and thus the technical specifications may change. An updated analysis will be published when the design is finalised.

We find that a large number of targets could be studied with multi-band photometry (i.e. photons binned into a limited number of broad photometric bands) or low resolution spectroscopy in a single observation. Simultaneous photometric measurements in the optical and infrared would allow for rigorous constraints on the planetary, stellar and orbital parameters of a system. Eclipse photometry in the visible and infrared provide the bulk temperature and albedo of the planet, thereby allowing an estimate of the planetary energy balance and insight into whether the planet has an additional energy input, such as an internal heat source. For the planets discovered by TESS and other transit surveys, constraining planetary ephemerides will be a key requirement to allow for spectroscopic observations further into the future. The planets which have deeper transits could be observed from the ground but fainter and shallower transits will require space-based facilities. Twinkle may also be able to detect TTVs and TDVs but this capability will depend upon the cadence of the observations as well as the impact of Earth obscuration and therefore requires further analysis on specific targets. The temporal binning for brighter targets will be very short (< 30 seconds) whilst for fainter stars, a temporal binning of a few minutes may be required, depending on the wavelength range considered. Such a cadence is suitable for TTV and TDV analysis and Twinkle's ability to obtain IR light curves will be useful for studying limb darkening and stellar activity which are expected to exhibit highly reduced distortion over this spectral range compared to visible wavelengths. Additionally, multi-colour light curves significantly attenuate degeneracy of fitted limb darkening parameters across all wavelengths.

Simulations shown here indicate that, for very bright targets, Twinkle will be capable of spectroscopy with resolutions $R > 20$ and sufficient precision to probe the major species present in their atmospheres and constrain lower abundance molecules. For some planets, such as HD 209458 b, this will be achievable in one transit or eclipse whilst others may require between 10 to 20 observations. The achievable resolution is plotted as a function of stellar k magnitude (Figs. 14 and 15, Appendix A) and show a cut-off limit of $K \text{ mag} \sim 12$ for spectroscopy ($R > 20$). Hence many Kepler planets orbit stars too faint for spectroscopic follow-up with Twinkle but TESS is expected to provide a multitude of suitable targets. The majority of planets that can be observed spectroscopically with Twinkle are hot, giant planets or Neptunes although some smaller or cooler planets around very bright stars might be feasible.

By simultaneously providing spectroscopic data over a large wavelength range, Twinkle will be able to reduce the degeneracies that affect current observations with Hubble and Spitzer. Whilst the spectral range of WFC3 is ideal for detecting water vapour and characterising clouds, Twinkle's wavelength range contains absorption features from a wide variety of molecules (e.g. H_2O , CH_4 , CO_2 , CO , NH_3 , HCN , TiO , VO). The instrument spectral resolving power allows in principle the detection of many trace gases, the only limiting factor being the precision achieved which depends upon the integration time (i.e. the number of transit or eclipse events). Twinkle's observations will be demand-based and thus the requirements in terms

of spectral resolution and SNR will depend on the user's preferences. The values here utilised for retrievals have been selected to provide an overview of the capabilities of the satellite and to allow a potential user to assess Twinkle's suitability for the observations they desire. From the spectral retrievals conducted here it is found that the major constituents of an atmosphere could potentially be recovered with low resolution spectroscopy ($R \sim 20$). However, for weaker molecular transitions or to retrieve trace gas abundances more accurately, longer integration time may be required (e.g. Fig. 13). In the case of Fig. 13, the underlying issue may be the cross-section utilised for C_2H_2 which has been determined at Earth-like temperatures, not the $\sim 2000K$ assumed here for 55 Cnc e. This highlights the need for accurate line lists over a wide temperature range.

The visible part of the spectrum can be utilised to measure the planetary albedo, Rayleigh scattering and detect/characterise clouds. Star spots and faculae may affect the observed transit depth at wavelengths shorter than $2\mu m$ and Twinkle's spectral coverage should allow stellar activity to be monitored and to remove, or mitigate, its impact on the observations. For hotter planets, metallic resonance line (e.g. Na and K) dominate the opacities over visible wavelengths [20]. The spectral resolving power considered for Twinkle in the optical ($R \sim 250$) will allow for such detections on planets orbiting very bright stars. A wide spectral range will also be advantageous in the search for condensates or hazes with many species expected to condense in exoplanetary atmospheres, as suggested by current observations [54, 65].

In the thermal regime, usually probed in the infrared through eclipse observations, redundancy in molecular detection is also necessary to allow for the retrieval of the vertical thermal structure and molecular abundances (e.g. [24, 62]). The capability to observe multiple absorption bands of the same molecule provides some redundancy and significantly improves the reliability of a detection. Additionally, insights into the vertical distribution of species can be gained by observing bands of different intensity which probe different atmospheric levels.

For a more refined list of targets and performances, several factors not studied in this paper must also be accounted for. These are detailed in Sections 4.2 – 4.4 below.

4.1 Complimentary with other facilities

Twinkle could be utilised to provide preliminary observations of targets for other observatories such as JWST and ARIEL, refining transit times and reducing the risk of missing transits due to poor ephemeris data. Given its capabilities, JWST time will be extremely precious [16], with over-subscription likely to be an issue, and thus any insight about the atmospheres of recently discovered planets will be highly advantageous to guide the selection of the very best targets. ARIEL will be launched in 2028 and aims at observing a very large population of exoplanet atmospheres [61]. A key decision for ARIEL is the selection of optimal and diverse targets before its launch and Twinkle could be utilised to inform these decisions as well as provide initial insights into the mission's science objectives. ARIEL will require a robust and

efficient schedule to observe a large population of exoplanets. Hence providing constraints on the planetary, stellar and orbital parameters with Twinkle would enhance the mission's scientific yield.

Additionally, Twinkle could enhance ground-based observations. Ground-based surveys are capable of extremely high resolution spectroscopy over narrow wavebands, but the spectral continuum is unknown. By observing the same target over a broader wavelength range from space, at a lower resolution, Twinkle will be able to provide the missing, highly complementary information.

4.2 Earth obscuration

The radiometric model used calculates the SNR achieved based upon observing a full transit or occultation. However, due to Twinkle's low Earth orbit, it will not always be possible to view the transits (or eclipses) in their entirety; instead, partial transits (or eclipses) will often be observed. Observing partial transits/eclipses will reduce the SNR achieved for a given number of observations and thus the number of transits (or eclipses) predicted by the radiometric model is, in these cases, an underestimate of the number that will need to be observed. A subsequent paper will assess the impact of Earth obscuration and the effect on the number of potentially observable targets.

4.3 Scheduling

The observability of a target has been determined by assuming that a given number of complete transits or eclipses could be viewed during the mission lifetime. In addition to Earth obscuration, scheduling constraints, such as telescope housekeeping, slewing between targets and observations of other targets, will impact the number of transits or eclipses that are observable in a given time period. Such constraints have not been included in this exercise and the development of an optimised schedule is dependent upon an improved understanding of the additional observations required due to Earth obscuration.

The expectation is that the main issue may be observation overlaps (i.e. two planets transiting at the same time) rather than an insufficient number of potential observations. Our analysis finds that, for currently-known planets within Twinkle's field of regard, around 85% of targets have at least 5 transits/eclipses which could be viewed in a year whilst over 60% of targets have 10 potential observations or more per year. Therefore, during the mission lifetime, most planets will have many transits and eclipses which could be observed. Further target selection studies will occur in due course and will incorporate these constraints.

4.4 Future planet discoveries

The main focus of this work is on Twinkle's capability to observe currently-known planets whilst also considering the predicted TESS yield. Additionally to TESS, by the launch date, other space-based missions such as Gaia, CHEOPS and K2, as well

as ground-based surveys including NGTS, ESPRESSO, and WASP, are expected to have discovered hundreds of new planets around bright stars within Twinkle's field of regard. This will provide an expanded list of planets including many that are anticipated to be observable by Twinkle.

Predicted TESS detections were included in this study to provide an indication of the number, and type, of planets projected to be discovered which will be suitable for observations with Twinkle. We find that discoveries from the TESS survey could more than double the number of exoplanet atmospheres that Twinkle is capable of observing. As further planets are discovered they will be added to this analysis to produce a comprehensive Twinkle target list.

5 Conclusion

In this study we present an initial survey of Twinkle's capability for optical and infrared observations of exoplanets. For the several hundred currently-known planets which lie within Twinkle's field of regard and whose parameters are known, we have estimated the spectral resolution which could be obtained for a given number of transit or eclipse events.

Within a single transit or eclipse observation, it is predicted that 82 existing targets could be observed in at $R < 20$ in channel 1 ($1.3 - 2.42 \mu\text{m}$) whilst 68 planets could be observed spectroscopically ($R > 20$) with 10 transits or eclipses. The planets observable spectroscopically are found to be generally hot, with planetary radii greater than $10 R_{\oplus}$, and orbiting bright stars (K magnitude < 11).

Spectral retrieval simulations of HD 209458 b, GJ 3470 b and 55 Cnc e highlight the expected capability of Twinkle for atmospheric characterisation in case of planets around very bright stars. We find that most abundant molecular species, cloud and atmospheric key parameters can be retrieved reasonably well at the spectral resolution obtainable with Twinkle.

Future surveys will reveal thousands of new exoplanets, some of which will be located within Twinkle's field of regard. Analysis of the predicted detections suggests the number of exoplanets, and exoplanet atmospheres, Twinkle is capable of characterising will dramatically increase from planets found with TESS.

Acknowledgements This research has made use of the NASA Exoplanet Archive, which is operated by the California Institute of Technology, under contract with the National Aeronautics and Space Administration under the Exoplanet Exploration Program. Additionally, the Open Exoplanet Catalogue, TEPcat and exoplanet.eu have been utilised as supplementary data sources.

This work has been funded through the ERC Consolidator grant ExoLights (GA 617119) and the STFC grant ST/S002634/1.

Open Access This article is distributed under the terms of the Creative Commons Attribution 4.0 International License (<http://creativecommons.org/licenses/by/4.0/>), which permits unrestricted use, distribution, and reproduction in any medium, provided you give appropriate credit to the original author(s) and the source, provide a link to the Creative Commons license, and indicate if changes were made.

Appendix A: K Magnitude Limits

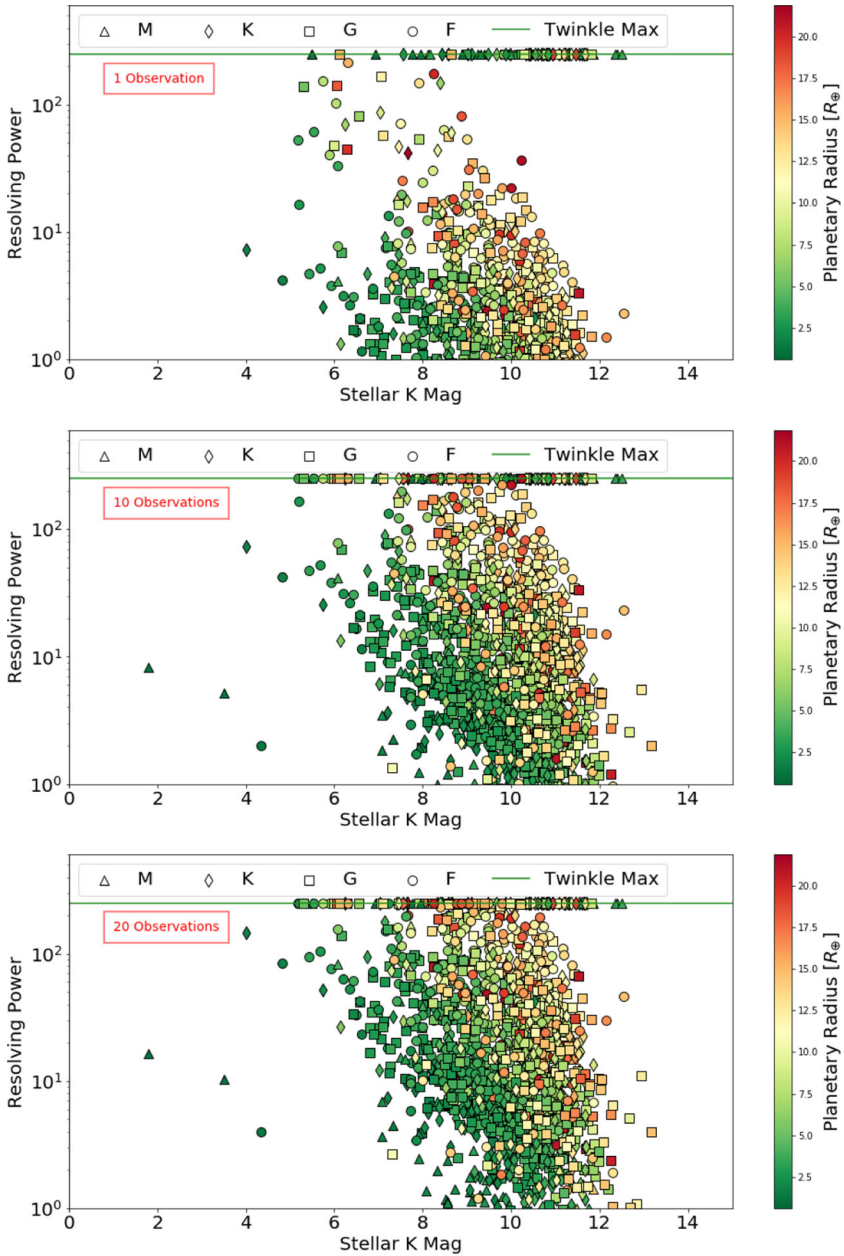


Fig. 14 Achievable resolving power in the visible channel ($0.4 - 1.0 \mu\text{m}$) for currently-known exoplanets and predicted TESS planets within Twinkle’s field of regard assuming a requirement of $\text{SNR} \geq 7$ for a given number of transit or eclipse observations. The colour of the point indicates the planetary radius, the shape indicates the stellar type of the host star and the green line represents Twinkle’s maximum resolving power in the channel

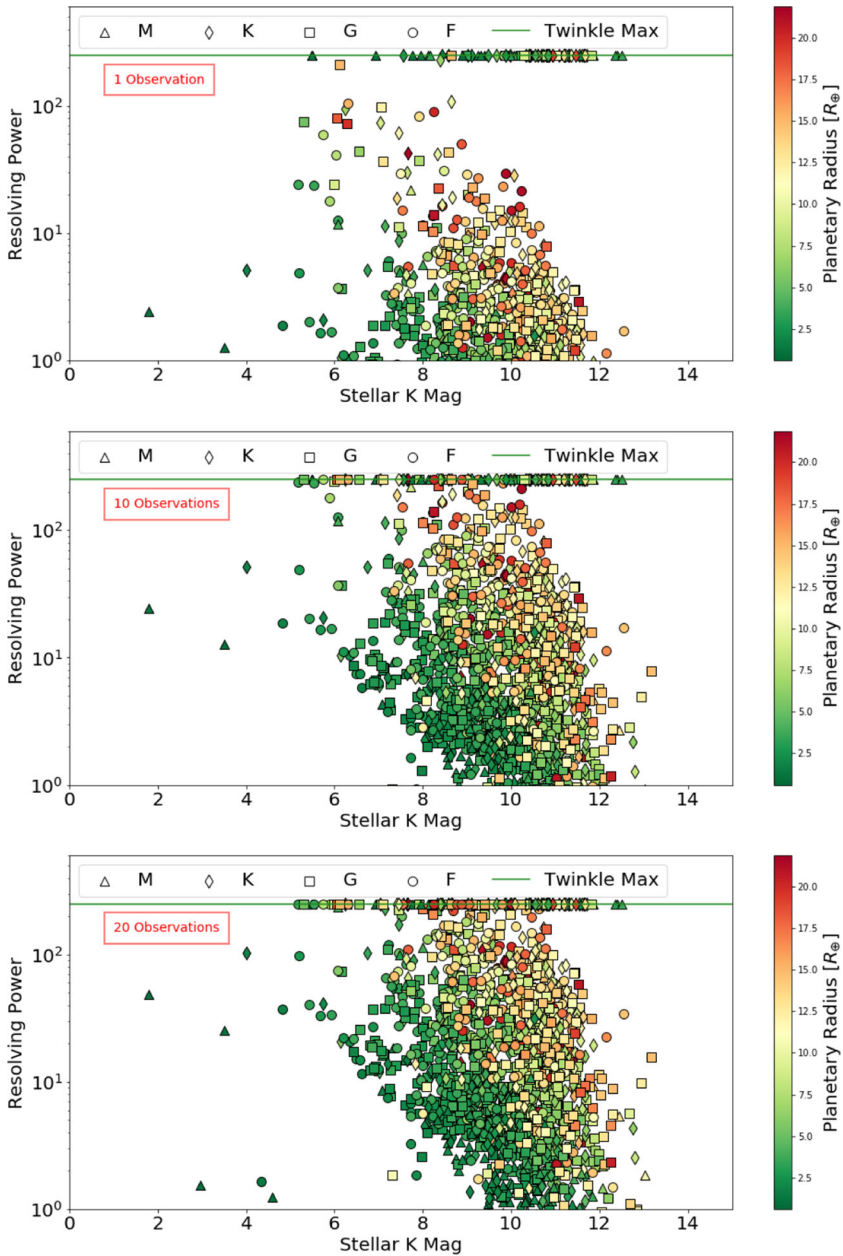


Fig. 15 Achievable resolving power in the first infrared channel ($1.3 - 2.42 \mu\text{m}$) for currently-known exoplanets and predicted TESS planets within Twinkle's field of regard assuming a requirement of $\text{SNR} \geq 7$ for a given number of transit or eclipse observations. The colour of the point indicates the planetary radius, the shape indicates the stellar type of the host star and the green line represents Twinkle's maximum resolving power in the channel

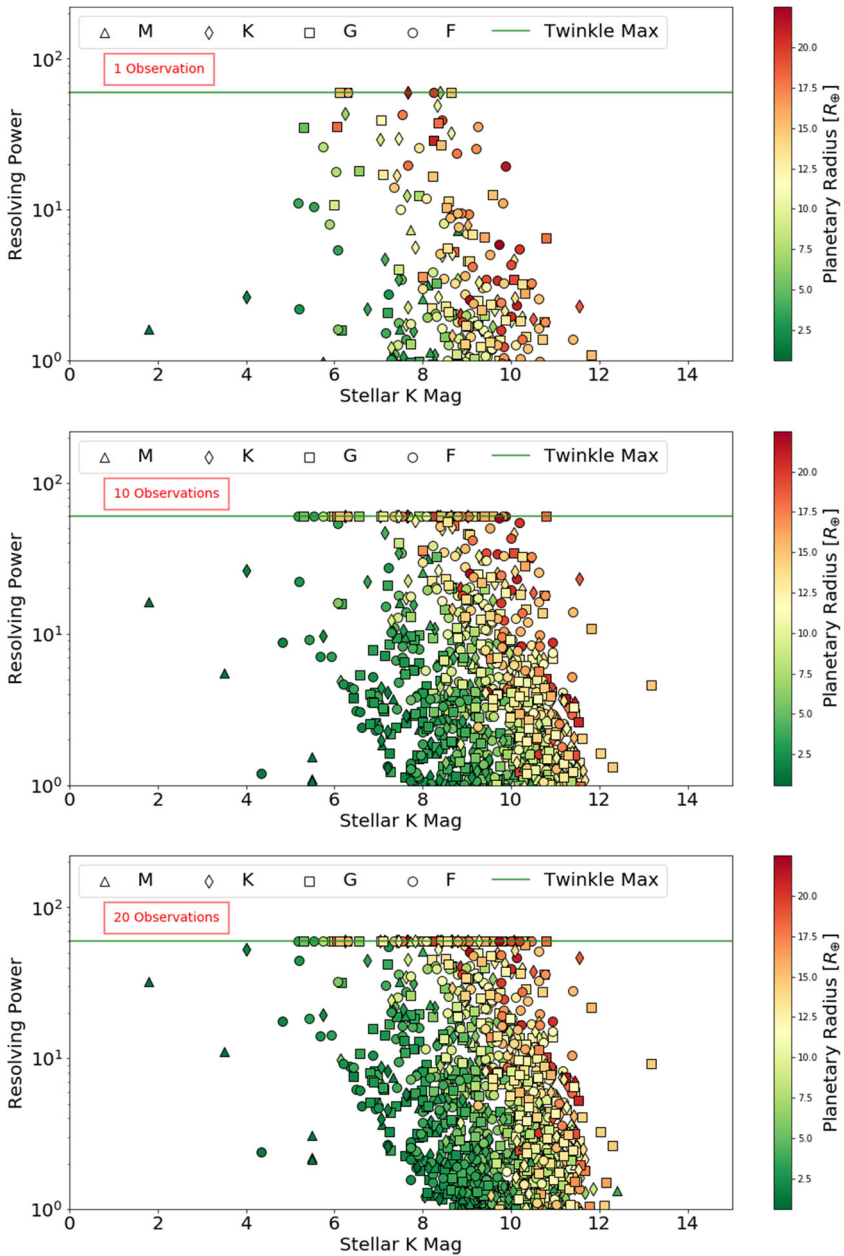


Fig. 16 Achievable resolving power in the second infrared channel ($2.42 - 4.5 \mu\text{m}$) for currently-known exoplanets and predicted TESS planets within Twinkle’s field of regard assuming a requirement of $\text{SNR} \geq 7$ for a given number of transit or eclipse observations. The colour of the point indicates the planetary radius, the shape indicates the stellar type of the host star and the green line represents Twinkle’s maximum resolving power in the channel

Appendix B: Retrieval Posteriors

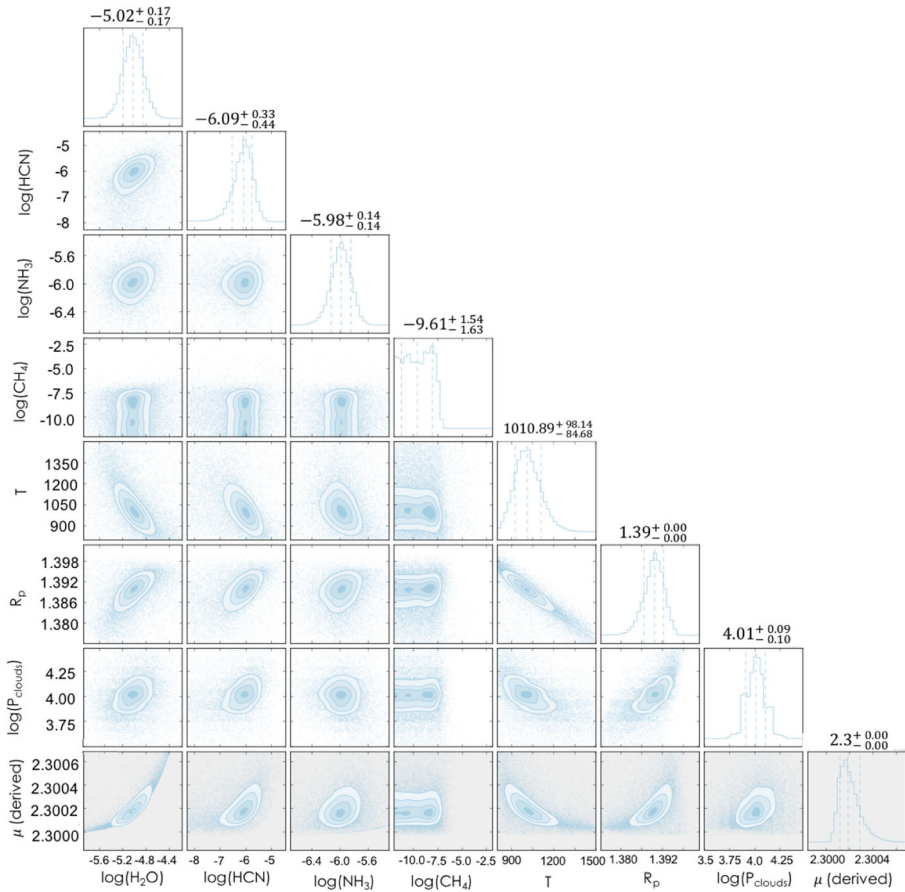


Fig. 17 Posteriors for spectral retrieval of HD 209458 b ($P_{Clouds} = 1 \times 10^4$, $H_2O = 1 \times 10^{-5}$, $HCN = 1 \times 10^{-6}$, $NH_3 = 1 \times 10^{-6}$, $CH_4 = 1 \times 10^{-8}$) at $R = 250$ ($\lambda < 2.42 \mu m$) and $R = 60$ ($\lambda > 2.42 \mu m$) with 1 transit observation which correctly recovers the major molecular abundances and cloud pressure but does not constrain CH_4

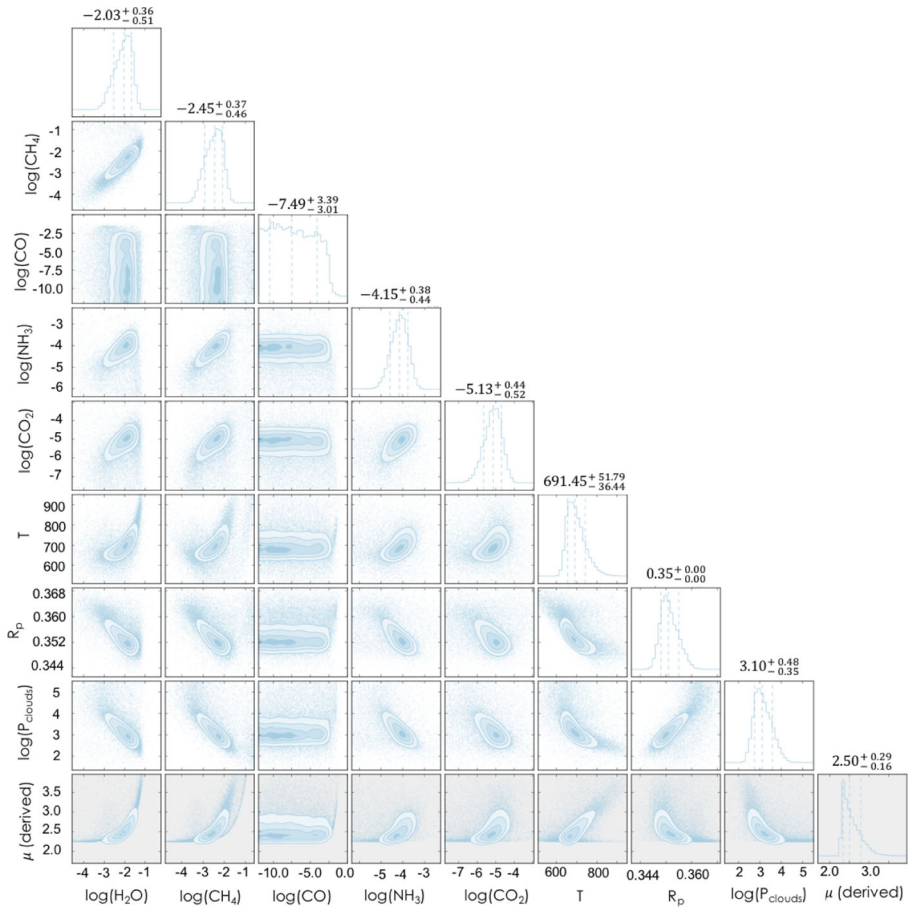


Fig. 18 Posteriors for spectral retrieval for GJ 3470 b ($P_{Clouds} = 1 \times 10^3$, $H_2O = 1 \times 10^{-2}$, $CH_4 = 4 \times 10^{-3}$, $CO = 1 \times 10^{-3}$, $NH_3 = 1 \times 10^{-4}$, $CO_2 = 1 \times 10^{-5}$) at $R = 65$ ($\lambda < 2.42 \mu m$) and $R = 20$ ($\lambda > 2.42 \mu m$) with 10 transit observations which correctly recovers the major molecular abundances and cloud pressure but does not constrain CO

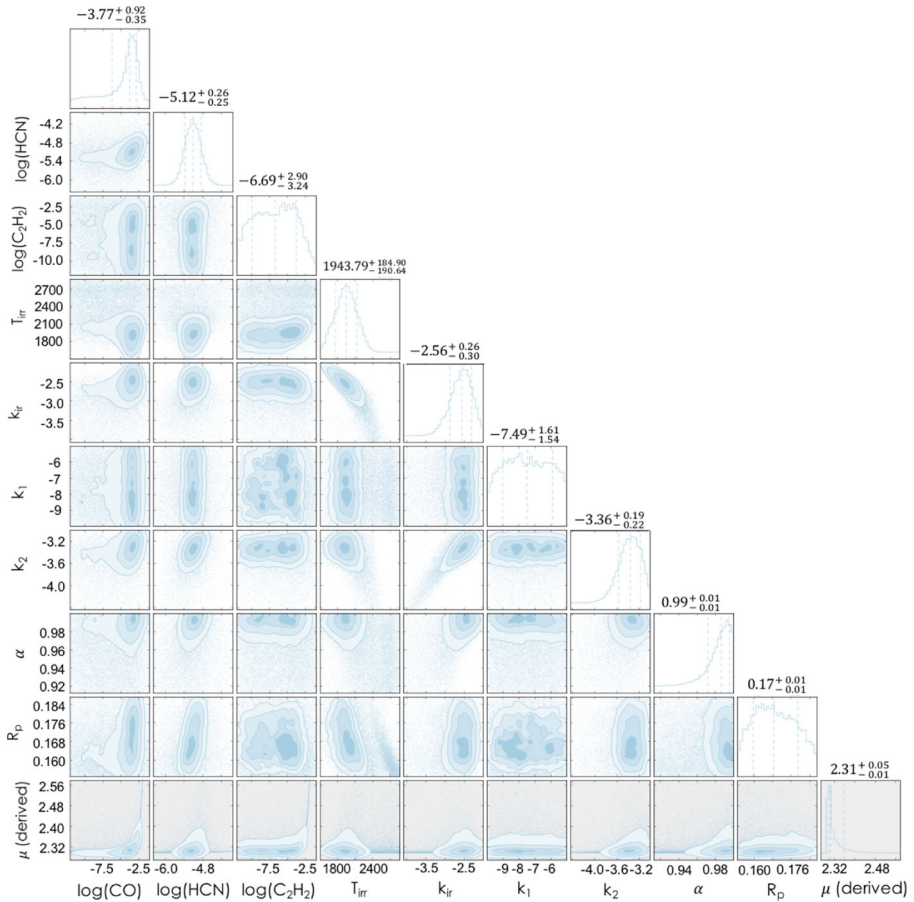


Fig. 19 Posteriors for spectral retrieval for 55 Cnc e (cloud free, $\text{CO} = 1 \times 10^{-3}$, $\text{C}_2\text{H}_2 = 1 \times 10^{-5}$, $\text{HCN} = 1 \times 10^{-5}$) at $R = 10$ ($\lambda < 2.42 \mu\text{m}$) and $R = 20$ ($\lambda > 2.42 \mu\text{m}$) with 10 eclipse observations which correctly recovers the HCN and CO abundances but does not obtain the correct C_2H_2 abundance

References

1. Agol, E., Steffen, J., Sari, R., Clarkson, W.: On detecting terrestrial planets with timing of giant planet transits. *MNRAS* **359**, 567–579 (2005)
2. Artigau, É., Kouach, D., Donati, J.-F., Doyon, R., Delfosse, X., Baratchart, S., Lacombe, M., Moutou, C., Rabou, P., Parès, L.P., Micheau, Y., Thibault, S., Reshetov, V.A., Dubois, B., Hernandez, O., Vallée, P., Wang, S.-Y., Dolon, F., Pepe, F.A., Bouchy, F., Striebig, N., Hénault, F., Loop, D., Sadelmyer, L., Barrick, G., Vermeulen, T., Dupieux, M., Hébrard, G., Boisse, I., Martioli, E., Alencar, S.H.P., do Nascimento, J.-D., Figueira, P.: SPIRou: the near-infrared spectropolarimeter/high-precision velocimeter for the Canada-France-Hawaii telescope. In: *Ground-based and Airborne Instrumentation for Astronomy V*, vol. 9147 of *Proceedings of SPIE*, pp. 914715 (2014)
3. Bakos, G., Noyes, R.W., Kovacs, G., Stanek, K., Sasselov, D., Domsa, I.: Wide-Field Millimagnitude photometry with the HAT: a tool for extrasolar planet detection. *Publ. Astron. Soc. Pac.* **116**, 266–277 (2004)
4. Bakos, G.Á., Csabry, Z., Penev, K., Bayliss, D., Jordán, A., Afonso, C., Hartman, J.D., Henning, T., Kovács, G., Noyes, R.W., Béky, B., Suc, V., Csák, B., Rabus, M., Lázár, J., Papp, I., Sári, P., Conroy,

- P., Zhou, G., Sackett, P.D., Schmidt, B., Mancini, L., Sasselov, D.D., Ueltzhoeffer, K.: HATSouth: a global network of fully automated identical wide-field telescopes. *Publ. Astron. Soc. Pac.* **125**, 154 (2013)
5. Barclay, T., Pepper, J., Quintana, E.V.: A revised exoplanet yield from the transiting exoplanet survey satellite (TESS). arXiv:1804.05050 (2018)
 6. Batalha, N.M., Rowe, J.F., Bryson, S.T., Barclay, T., Burke, C.J., Caldwell, D.A., Christiansen, J.L., Mullally, F., Thompson, S.E., Brown, T.M., Dupree, A.K., Fabrycky, D.C., Ford, E.B., Fortney, J.J., Gilliland, R.L., Isaacson, H., Latham, D.W., Marcy, G.W., Quinn, S.N., Ragozzine, D., Shporer, A., Borucki, W.J., Ciardi, D.R., Gautier III, T.N., Haas, M.R., Jenkins, J.M., Koch, D.G., Lissauer, J.J., Rapin, W., Basri, G.S., Boss, A.P., Buchhave, L.A., Carter, J.A., Charbonneau, D., Christensen-Dalsgaard, J., Clarke, B.D., Cochran, W.D., Demory, B.-O., Desert, J.-M., Devore, E., Doyle, L.R., Esquerdo, G.A., Everett, M., Fressin, F., Geary, J.C., Girouard, F.R., Gould, A., Hall, J.R., Holman, M.J., Howard, A.W., Howell, S.B., Ibrahim, K.A., Kjenemuchi, K., Kjeldsen, H., Klaus, T.C., Li, J., Lucas, P.W., Meibom, S., Morris, R.L., prša, A., Quintana, E., Sanderfer, D.T., Sasselov, D., Seader, S.E., Smith, J.C., Steffen, J.H., Still, M., Stumpe, M.C., Tarter, J.C., Tenenbaum, P., Torres, G., Twicken, J.D., Uddin, K., Van Cleve, J., Walkowicz, L., Welsh, W.F.: Planetary Candidates Observed by Kepler. III. Analysis of the First 16 Months of Data. *Astrophys. J. Suppl.* **204**, 24 (2013)
 7. Bean, J.L., Stevenson, K.B., Batalha, N.M., Berta-Thompson, Z., Kreidberg, L., Crouzet, N., Benneke, B., Line, M.R., Sing, D.K., Wakeford, H.R., Knutson, H.A., Kempton, E.M.-R., Désert, J.-M., Crossfield, I., Batalha, N.E., de Wit, J., Parmentier, V., Harrington, J., Moses, J.I., Lopez-Morales, M., Alam, M.K., Blecic, J., Bruno, G., Carter, A.L., Chapman, J.W., Decin, L., Dragomir, D., Evans, T.M., Fortney, J.J., Fraine, J.D., Gao, P., García Muñoz, A., Gibson, N.P., Goyal, J.M., Heng, K., Hu, R., Kendrew, S., Kilpatrick, B.M., Krick, J., Lagage, P.-O., Lendl, M., Louden, T., Madhusudhan, N., Mandell, A.M., Mansfield, M., May, E.M., Morello, G., Morley, C.V., Nikolov, N., Redfield, S., Roberts, J.E., Schlawin, E., Spake, J.J., Todorov, K.O., Tsiaras, A., Venot, O., Waalkes, W.C., Wheatley, P.J., Zellem, R.T., Angerhausen, D., Barrado, D., Carone, L., Casewell, S.L., Cubillos, P.E., Damiano, M., de Val-Borro, M., Drummond, B., Edwards, B., Endl, M., Espinoza, N., France, K., Gizis, J.E., Greene, T.P., Henning, T.K., Hong, Y., Ingalls, J.G., Iro, N., Irwin, P.G.J., Kataria, T., Lahuis, F., Leconte, J., Lillo-Box, J., Lines, S., Mancini, L., Marchis, F., Mayne, N., Palle, E., Roudier, G., Shkolnik, E.L., Southworth, J., Teske, J., Tinetti, G., Tremblin, P., Tucker, G.S., van Boekel, R., Waldmann, I.P., Weaver, I.C., Zingales, T.: The Transiting Exoplanet Community Early Release Science Program for JWST. ArXiv e-prints (2018)
 8. Beichman, C., Benneke, B., Knutson, H., Smith, R., Lagage, P.-O., Dressing, C., Latham, D., Lunine, J., Birkmann, S., Ferruit, P., Giardino, G., Kempton, E., Carey, S., Krick, J., Deroo, P.D., Mandell, A., Ressler, M.E., Shporer, A., Swain, M., Vasisht, G., Ricker, G., Bouwman, J., Crossfield, I., Greene, T., Howell, S., Christiansen, J., Ciardi, D., Clampin, M., Greenhouse, M., Sozzetti, A., Goudfrooij, P., Hines, D., Keyes, T., Lee, J., McCullough, P., Robberto, M., Stansberry, J., Valenti, J., Rieke, M., Rieke, G., Fortney, J., Bean, J., Kreidberg, L., Ehrenreich, D., Deming, D., Albert, L., Doyon, R., Sing, D.: Observations of transiting exoplanets with the James Webb Space Telescope (JWST). *Publ. Astron. Soc. Pac.* **126**, 1134 (2014)
 9. Broeg, C., Fortier, A., Ehrenreich, D., Alibert, Y., Baumjohann, W., Benz, W., Deleuil, M., Gillon, M., Ivanov, A., Liseau, R., Meyer, M., Olofsson, G., Pagano, I., Piotto, G., Pollacco, D., Queloz, D., Ragozzini, R., Renotte, E., Steller, M., Thomas, N.: CHEOPS: A transit photometry mission for ESA's small mission programme. In: *European Physical Journal Web of Conferences*, volume 47 of *European Physical Journal Web of Conferences*, pp. 03005 (2013)
 10. Brogi, M., Snellen, I.A.G., de Kok, R.J., Albrecht, S., Birkby, J., de Mooij, E.J.W.: The signature of orbital motion from the dayside of the planet τ boötis b. *Nature* **486**, 502–504 (2012)
 11. Bruno, G., Deleuil, M., Almenara, J.-M., Barros, S.C.C., Lanza, A.F., Montalto, M., Boisse, I., Santerne, A., Lagrange, A.-M., Meunier, N.: Disentangling planetary and stellar activity features in the CoRoT-2 light curve. *A&A* **595**, A89 (2016)
 12. Cassan, A., Kubas, D., Beaulieu, J.-P., Dominik, M., Horne, K., Greenhill, J., Wambsgans, J., Menzies, J., Williams, A., Jørgensen, U.G., Udalski, A., Bennett, D.P., Albrow, M.D., Batista, V., Brillant, S., Caldwell, J.A.R., Cole, A., Coutures, C., Cook, K.H., Dieters, S., Dominis Prester, D., Donatowicz, J., Fouqué, P., Hill, K., Kains, N., Kane, S., Marquette, J.-B., Martin, R., Pollard, K.R., Sahu, K.C., Vinter, C., Warren, D., Watson, B., Zub, M., Sumi, T., Szymański, M.K., Kubiak, M., Poleski, R., Soszynski, I., Ulaczyk, K., Pietrzyński, G., Wyrzykowski, Ł.: One or more bound planets per Milky Way star from microlensing observations. *Nature* **481**, 167–169 (2012)

13. Cessa, V., Beck, T., Benz, W., Broeg, C., Ehrenreich, D., Fortier, A., Peter, G., Magrin, D., Pagano, I., Plesseria, J.-Y., Steller, M., Szoke, J., Thomas, N., Ragazzoni, R., Wildi, F.: CHEOPS: a space telescope for ultra-high precision photometry of exoplanet transits. In: Society of Photo-Optical Instrumentation Engineers (SPIE) Conference Series, vol. 10563 of Society of Photo-Optical Instrumentation Engineers (SPIE) Conference Series, pp. 105631L (2017)
14. Chen, J., Kipping, D.: Probabilistic forecasting of the masses and radii of other worlds. *Astrophys. J.* **834**, 17 (2017)
15. Christiansen, J.L.: Exoplanet catalogues. arXiv:1803.11158 (2018)
16. Cowan, N.B., Greene, T., Angerhausen, D., Batalha, N.E., Clampin, M., Colón, K., Crossfield, I.J.M., Fortney, J.J., Gaudi, B.S., Harrington, J., Iro, N., Lillie, C.F., Linsky, J.L., Lopez-Morales, M., Mandell, A.M., Stevenson, K.B.: Characterizing transiting planet atmospheres through 2025. *Publ. Astron. Soc. Pac.* **127**, 311 (2015)
17. Davila, P., Bos, B., Contreras, J., Evans, C., Greenhouse, M., Hobbs, G., Holota, W., Huff, L., Hutchings, J., Jamieson, T., Lightsey, P., Morbey, C., Murowinski, R., Rieke, M., Rowlands, N., Steakley, B., Wells, M., Plate, M., Wright, G.: The james webb space telescope science instrument suite: An overview of optical designs. In: Mather, J. (ed.) *Proceedings of SPIE - The International Society for Optical Engineering*, vol. 5487, pp. 611–627 (2004)
18. Dressing, C.D., Charbonneau, D.: The occurrence rate of small planets around small stars. *Astrophys. J.* **767**, 95 (2013)
19. Edwards, B., Savini, G., Tinetti, G., Bowles, N., Lindsay, S.: Remote Sensing of Major Solar System Bodies with the Twinkle Space Telescope. SPIE, submitted (2018)
20. Encrenaz, T., Tinetti, G., Tessenyi, M., Drossart, P., Hartogh, P., Coustenis, A.: Transit spectroscopy of exoplanets from space: how to optimize the wavelength coverage and spectral resolving power. *Exp. Astron.* **40**(2), 523–543 (2015)
21. Fu, G., Deming, D., Knutson, H., Madhusudhan, N., Mandell, A., Fraine, J.: Statistical analysis of hubble /WFC3 transit spectroscopy of extrasolar planets. *The Astrophysical Journal Letters* **847**(2), L22 (2017)
22. Gardner, J.P., Mather, J.C., Clampin, M., Doyon, R., Greenhouse, M.A., Hammel, H.B., Hutchings, J.B., Jakobsen, P., Lilly, S.J., Long, K.S., Lunine, J.I., McCaughrean, M.J., Mountain, M., Nella, J., Rieke, G.H., Rieke, M.J., Rix, H.-W., Smith, E.P., Sonneborn, G., Stiavelli, M., Stockman, H.S., Windhorst, R.A., Wright, G.S.: The james webb space telescope. *Space Sci. Rev.* **123**, 485–606 (2006)
23. Gillon, M., Triaud, A.H.M.J., Demory, B.-O., Jehin, E., Agol, E., Deck, K.M., Lederer, S.M., de Wit, J., Burdanov, A., Ingalls, J.G., Bolmont, E., Leconte, J., Raymond, S.N., Selsis, F., Turbet, M., Barakaoui, K., Burgasser, A., Burleigh, M.R., Carey, S.J., Chaushev, A., Copperwheat, C.M., Delrez, L., Fernandes, C.S., Holdsworth, D.L., Kotze, E.J., Van Grootel, V., Almléay, Y., Benkhaldoun, Z., Magain, P., Queloz, D.: Seven temperate terrestrial planets around the nearby ultracool dwarf star TRAPPIST-1. *Nature* **542**, 456–460 (2017)
24. Goody, R.M., Yung, Y.L.: *Atmospheric radiation : theoretical basis* (1989)
25. Gordon, I., Rothman, L.S., Wilzewski, J.S., Kochanov, R.V., Hill, C., Tan, Y., Wcislo, P.: HITRAN2016 : new and improved data and tools towards studies of planetary atmospheres. In: AAS/Division for Planetary Sciences Meeting Abstracts #48, volume 48 of AAS/Division for Planetary Sciences Meeting Abstracts, pp. 421.13 (2016)
26. Greene, T.P., Line, M.R., Montero, C., Fortney, J.J., Lustig-Yaeger, J., Luther, K.: Characterizing transiting exoplanet atmospheres with JWST. *ApJ* **817**, 17 (2016)
27. Holman, M.J., Murray, N.W.: The use of transit timing to detect Terrestrial-Mass extrasolar planets. *Science* **307**, 1288–1291 (2005)
28. Houck, J.R., Roellig, T.L., van Cleve, J., Forrest, W.J., Herter, T., Lawrence, C.R., Matthews, K., Reitsema, H.J., Soifer, B.T., Watson, D.M., Weedman, D., Huisjen, M., Troeltzsch, J., Barry, D.J., Bernard-Salas, J., Blacken, C.E., Brandl, B.R., Charmandaris, V., Devost, D., Gull, G.E., Hall, P., Henderson, C.P., Higdon, S.J.U., Pirger, B.E., Schoenwald, J., Sloan, G.C., Uchida, K.I., Appleton, P.N., Armus, L., Burgdorf, M.J., Fajardo-Acosta, S.B., Grillmair, C.J., Ingalls, J.G., Morris, P.W., Teplitz, H.I.: The infrared spectrograph (IRS) on the spitzer space telescope. *Astrophys. J. Suppl.* **154**, 18–24 (2004)
29. Howard, A.W.: Observed properties of extrasolar planets. *Science* **340**, 572–576 (2013)
30. Howell, S.B., Sobeck, C., Haas, M., Still, M., Barclay, T., Mullally, F., Troeltzsch, J., Aigrain, S., Bryson, S.T., Caldwell, D., Chaplin, W.J., Cochran, W.D., Huber, D., Marcy, G.W., Miglio, A., Najita,

- J.R., Smith, M., Twicken, J.D., Fortney, J.J.: The K2 mission: characterization and early results. *Publ. Astron. Soc. Pac.* **126**, 398 (2014)
31. Jason, S., da Silva Curiel, A., Tessenyi, M., Tinetti, G., Savini, G., Tennyson, J., Pascale, E., Williams, J.J., Prasad, S., Vora, A., Saunders, C., Friend, J., Sweeting, M.: *Twinkle: A new idea for commercial astrophysics missions*. 4S Symposium, Valletta, Malta, 30 May 2016 (2016)
 32. Jehin, E., Gillon, M., Opatom, C., Manfroid, J., Hutsemékers, D., Magain, P.: TRAPPIST (TRANSiting Planets and Planetesimals Small Telescope). *European Planetary Science Congress* **8**, EPSC2013–968 (2013)
 33. Kipping, D.M.: Transit timing effects due to an exomoon. *MNRAS* **392**, 181–189 (2009)
 34. Linial, I., Gilbaum, S., Sari, R.: Modal decomposition of TTV: Inferring planet masses and eccentricities. *ApJ* **860**, 16 (2018)
 35. Lissauer, J.J., Fabrycky, D.C., Ford, E.B., Borucki, W.J., Fressin, F., Marcy, G.W., Orosz, J.A., Rowe, J.F., Torres, G., Welsh, W.F., Batalha, N.M., Bryson, S.T., Buchhave, L.A., Caldwell, D.A., Carter, J.A., Charbonneau, D., Christiansen, J.L., Cochran, W.D., Desert, J.-M., Dunham, E.W., Fanelli, M.N., Fortney, J.J., Gautier III, T.N., Geary, J.C., Gilliland, R.L., Haas, M.R., Hall, J.R., Holman, M.J., Koch, D.G., Latham, D.W., Lopez, E., McCauliff, S., Miller, N., Morehead, R.C., Quintana, E.V., ragozzine, D., Sasselov, D., Short, D.R., Steffen, J.H.: A closely packed system of low-mass, low-density planets transiting Kepler-11. *Nature* **470**, 53–58 (2011)
 36. Louie, D.R., Deming, D., Albert, L., Bouma, L.G., Bean, J., Lopez-Morales, M.: Simulated JWST/NIRISS transit spectroscopy of anticipated tess planets compared to select discoveries from space-based and ground-based surveys. *Publ. Astron. Soc. Pac.* **130**(4), 044401 (2018)
 37. MacDonald, R.J., Madhusudhan, N.: HD 209458B in new light: evidence of nitrogen chemistry, patchy clouds and sub-solar water. *MNRAS* **469**, 1979–1996 (2017)
 38. Majeau, C., Agol, E., Cowan, N.B.: A two-dimensional infrared map of the extrasolar planet HD 189733b. *The Astrophysical Journal Letters* **747**, L20 (2012)
 39. Nutzman, P., Charbonneau, D., Irwin, J., Burke, C., Berta, Z., Falco, E.E.: The MEarth observatory and the search for transiting habitable superEarths. In: *AAS/Division for Planetary Sciences Meeting Abstracts #41*, volume 41 of *AAS/Division for Planetary Sciences Meeting Abstracts*, pp. 8.02 (2009)
 40. Pepe, F., Mayor, M., Benz, W., Bertaux, J.-L., Sivan, J.-P., Queloz, D., Udry, S.: The HARPS project. In: Bergeron, J., Renzini, A. (eds.) *From Extrasolar Planets to Cosmology: The VLT Opening Symposium*, pp. 572 (2000)
 41. Pepe, F.A., Cristiani, S., Rebolo Lopez, R., Santos, N.C., Amorim, A., Avila, G., Benz, W., Bonifacio, P., Cabral, A., Carvas, P., Cirami, R., Coelho, J., Comari, M., Coretti, I., De Caprio, V., Dekker, H., Delabre, B., Di Marcantonio, P., D’Odorico, V., Fleury, M., García, R., Herreros Linares, J.M., Hughes, I., Iwert, O., Lima, J., Lizon, J.-L., Lo Curto, G., Lovis, C., Manescau, A., Martins, C., Mégevand, D., Moitinho, A., Molaro, P., Monteiro, M., Monteiro, M., Pasquini, L., Mordasini, C., Queloz, D., Rasilla, J.L., Rebordão, J.M., Santana Tschudi, S., Santin, P., Sosnowska, D., Spanò, P., Tenegi, F., Udry, S., Vanzella, E., Viel, M., Zapatero Osorio, M.R., Zerbini, F.: ESPRESSO: the Echelle spectrograph for rocky exoplanets and stable spectroscopic observations. In: *Ground-based and Airborne Instrumentation for Astronomy III*, vol. 7735 of *Proceedings of SPIE*, pp. 77350F (2010)
 42. Perryman, M., Hartman, J., Bakos, G.Á., Lindegren, L.: Astrometric exoplanet detection with gaia. *ApJ* **797**, 14 (2014)
 43. Pollacco, D.L., Skillen, I., Collier Cameron, A., Christian, D.J., Hellier, C., Irwin, J., Lister, T.A., Street, R.A., West, R.G., Anderson, D.R., Clarkson, W.I., Deeg, H., Enoch, B., Evans, A., Fitzsimmons, A., Haswell, C.A., Hodgkin, S., Horne, K., Kane, S.R., Keenan, F.P., Maxted, P.F.L., Norton, A.J., Osborne, J., Parley, N.R., Ryans, R.S.I., Smalley, B., Wheatley, P.J., Wilson, D.M.: The WASP project and the superWASP cameras. *Publ. Astron. Soc. Pac.* **118**, 1407–1418 (2006)
 44. Puig, L., Isaak, K., Linder, M., Escudero, I., Crouzet, P.-E., Walker, R., Ehle, M., Huebner, J., Timm, R., de Vogeleer, B., Drossart, P., Hartogh, P., Lovis, C., Micela, G., Ollivier, M., Ribas, I., Snellen, I., Swinyard, B., Tinetti, G., Eccleston, P.: The phase 0/A study of the ESA M3 mission candidate ECHO. *Exp. Astron.* **40**, 393–425 (2015)
 45. Puig, L., Pilbratt, G., Heske, A., Escudero, I., Crouzet, P.-E., de Vogeleer, B., Symonds, K., Kohley, R., Drossart, P., Eccleston, P., Hartogh, P., Leconte, J., Micela, G., Ollivier, M., Tinetti, G., Turrini, D., Vandenbussche, B., Wolkenberg, P.: The phase a study of the ESA M4 mission candidate ARIEL. *Experimental Astronomy* (2018)
 46. Quirrenbach, A., Amado, P.J., Ribas, I., Reiners, A., Caballero, J.A., Seifert, W., Zechmeister, M., CARMENES Consortium: CARMENES - M dwarfs and their planets: first results. In: Nandy, D.,

- Valio, A., Petit, P. (eds.) *Living Around Active Stars*, volume 328 of IAU Symposium, pp. 46–53 (2017)
47. Rein, H.: A proposal for community driven and decentralized astronomical databases and the Open Exoplanet Catalogue. arXiv:[1211.7121](https://arxiv.org/abs/1211.7121) (2012)
 48. Ricker, G.R., Winn, J.N., Vanderspek, R., Latham, D.W., Bakos, G.Á., Bean, J.L., Berta-Thompson, Z.K., Brown, T.M., Buchhave, L., Butler, N.R., Butler, R.P., Chaplin, W.J., Charbonneau, D., Christensen-Dalsgaard, J., Clampin, M., Deming, D., Doty, J., De Lee, N., Dressing, C., Dunham, E.W., Endl, M., Fressin, F., Ge, J., Henning, T., Holman, M.J., Howard, A.W., Ida, S., Jenkins, J., Jernigan, G., Johnson, J.A., Kaltenegger, L., Kawai, N., Kjeldsen, H., Laughlin, G., Levine, A.M., Lin, D., Lissauer, J.J., MacQueen, P., Marcy, G., McCullough, P.R., Morton, T.D., Narita, N., Paegert, M., Palle, E., Pepe, F., Pepper, J., Quirrenbach, A., Rinehart, S.A., Sasselov, D., Sato, B., Seager, S., Sozzetti, A., Stassun, K.G., Sullivan, P., Szentgyorgyi, A., Torres, G., Udry, S., Villaseñor, J.: Transiting Exoplanet Survey Satellite (TESS). In: *Space Telescopes and Instrumentation 2014: Optical, Infrared, and Millimeter Wave*, vol. 9143 of Proceedings of the SPIE, pp 914320 (2014)
 49. Rothman, L.S., Gordon, I.E.: Status of the HITRAN and HITEMP Databases. In: *13th International HITRAN Conference*, June 2014, Cambridge, Massachusetts, USA (2014)
 50. Sarkar, S., Papageorgiou, A., Tsirikonis, I.A., Vandenbussche, B., Pascale, E.: ARIEL Performance Analysis Report: ARIEL-CRDF-PL-AN-001 (2017)
 51. Savini, G., Tessenyi, M., Tinetti, G., Arena, C., Tennyson, J., Zingales, T., Pascale, E., Sudiwala, R., Papageorgiou, A., Sarkar, S., Ade, P., Griffin, M.J., Barnes, K., Hipwood, L., Knowles, P., Patel, M., Leese, M., Mason, J., Crook, M., Department, T., Tosh, I., Saad, A., Eccleston, P., Shaughnessy, B., Brooke, T., Wells, M., Bryson, I., MacLeod, A., Taylor, W., Bezawada, N., Wright, G.S., Jason, S., Friend, J., Williams, J., Johnston, G., Prasad, G., Vora, A., Saunders, C., Winter, B., Curry, P., Smith, A.: Twinkle – A low earth orbit visible and infrared exoplanet spectroscopy observatory. In: Preprint (SPIE astronomical telescopes + instrumentation 2016 paper 9904—175) (2016)
 52. Schneider, J., Dedieu, C., Le Sidaner, P., Savalle, R., Zolotukhin, I.: Defining and cataloging exoplanets: the exoplanet.eu database. *A&A* **532**, A79 (2011)
 53. Seager, S., Mallén-ornelas, G.: A unique solution of planet and star parameters from an extrasolar planet transit light curve. *ApJ* **585**, 1038–1055 (2003)
 54. Sing, D.K., Fortney, J.J., Nikolov, N., Wakeford, H.R., Kataria, T., Evans, T.M., Aigrain, S., Ballester, G.E., Burrows, A.S., Deming, D., Désert, J.-M., Gibson, N.P., Henry, G.W., Huitson, C.M., Knutson, H.A., Lecavelier Des Etangs, A., Pont, F., Showman, A.P., Vidal-Madjar, A., Williamson, M.H., Wilson, P.A.: A continuum from clear to cloudy hot-Jupiter exoplanets without primordial water depletion. *Nature* **529**, 59–62 (2016)
 55. Southworth, J.: Homogeneous studies of transiting extrasolar planets - IV. Thirty systems with space-based light curves. *MNRAS* **417**, 2166–2196 (2011)
 56. Sozzetti, A.: Astrometry and Exoplanets: The Gaia Era and Beyond. In: *EAS Publications Series*, vol. 45, 2010, pp.273-278 (2010)
 57. Stevenson, K.B., Désert, J.-M., Line, M.R., Bean, J.L., Fortney, J.J., Showman, A.P., Kataria, T., Kreidberg, L., McCullough, P.R., Henry, G.W., Charbonneau, D., Burrows, A., Seager, S., Madhusudhan, N., Williamson, M.H., Homeier, D.: Thermal structure of an exoplanet atmosphere from phase-resolved emission spectroscopy. *Science* **346**, 838–841 (2014)
 58. Sullivan, P.W., Winn, J.N., Berta-Thompson, Z.K., Charbonneau, D., Deming, D., Dressing, C.D., Latham, D.W., Levine, A.M., McCullough, P.R., Morton, T., Ricker, G.R., Vanderspek, R., Woods, D.: The transiting exoplanet survey satellite: Simulations of planet detections and astrophysical false positives. *ApJ* **809**, 77 (2015)
 59. Teachey, A., Kipping, D.M., Schmitt, A.R.: HEK. VI. On the dearth of galilean analogs in kepler, and the exomoon candidate Kepler-1625b I. *AJ* **155**, 36 (2018)
 60. Tessenyi, M., Ollivier, M., Tinetti, G., Beaulieu, J.P., Coudé du foresto, V., Encrenaz, T., Micela, G., Swinyard, B., Ribas, I., Aylward, A., Tennyson, J., Swain, M.R., Sozzetti, A., Vasisht, G., Deroo, P.: Characterizing the atmospheres of transiting planets with a dedicated space telescope. *ApJ* **746**, 45 (2012)
 61. Tinetti, G., Drossart, P., Eccleston, P., Hartogh, P., Heske, A., Leconte, J., Micela, G., Ollivier, M., Pilbratt, G., Puig, L., Turrini, D., Vandenbussche, B., Wolkenberg, P.: A chemical survey of exoplanets with ARIEL. *Experimental Astronomy*, in press (2018)
 62. Tinetti, G., Encrenaz, T., Coustenis, A.: Spectroscopy of planetary atmospheres in our Galaxy. *Astron. Astrophys. Rev.* **21**, 63 (2013)

63. Tsiaras, A., Rocchetto, M., Waldmann, I.P., Venot, O., Varley, R., Morello, G., Damiano, M., Tinetti, G., Barton, E.J., Yurchenko, S.N., Tennyson, J.: Detection of an atmosphere around the super-earth 55 cancri e. *ApJ* **820**, 99 (2016a)
64. Tsiaras, A., Waldmann, I.P., Rocchetto, M., Varley, R., Morello, G., Damiano, M., Tinetti, G.: A new approach to analyzing HST spatial scans: the transmission spectrum of HD 209458 b. *ApJ* **832**, 202 (2016b)
65. Tsiaras, A., Waldmann, I.P., Zingales, T., Rocchetto, M., Morello, G., Damiano, M., Karpouzas, K., Tinetti, G., McKemmish, L.K., Tennyson, J., Yurchenko, S.N.: A population study of gaseous exoplanets. *AJ* **155**, 156 (2018)
66. Venot, O., Agúndez, M.: Chemical modeling of exoplanet atmospheres. *Exp. Astron.* **40**, 469–480 (2015)
67. Venot, O., Agúndez, M., Selsis, F., Tessenyi, M., Iro, N.: The atmospheric chemistry of the warm Neptune GJ 3470b: Influence of metallicity and temperature on the CH₄/CO ratio. *A&A* **562**, A51 (2014)
68. Waldmann, I.P., Rocchetto, M., Tinetti, G., Barton, E.J., Yurchenko, S.N., Tennyson, J.: Tau-REx II: retrieval of emission spectra. *ApJ* **813**, 13 (2015a)
69. Waldmann, I.P., Tinetti, G., Rocchetto, M., Barton, E.J., Yurchenko, S.N., Tennyson, J.: Tau-REx I: a next generation retrieval code for exoplanetary atmospheres. *ApJ* **802**, 107 (2015b)
70. Wells, M.: The infrared spectrometer for Twinkle. *Proc. SPIE* **9904**, 9904–176 (2016)
71. Wheatley, P.J., Pollacco, D.L., Queloz, D., Rauer, H., Watson, C.A., West, R.G., Chazelas, B., Louden, T.M., Walker, S., Bannister, N., Bento, J., Burleigh, M., Cabrera, J., Eig Müller, P., Erikson, A., Genolet, L., Goad, M., Grange, A., Jordán, A., Lawrie, K., McCormac, J., Neveu, M.: The next generation transit survey (NGTS). In: *Hot Planets and Cool Stars*, Garching, Germany, Edited by Roberto Saglia; EPJ Web of Conferences, vol. 47, p. 13002 (2013)
72. Wright, G.S., Rieke, G.H., Colina, L., van Dishoeck, E., Goodson, G., Greene, T., Lagage, P.-O., Karnik, A., Lambros, S.D., Lemke, D., Meixner, M., Norgaard, H.-U., Olofson, G., Ray, T., Ressler, M., Waelkens, C., Wright, D., Zhender, A.: The JWST MIRI instrument concept. In: Mather, J.C. (ed.) *Optical, Infrared, and Millimeter Space Telescopes*, volume 5487 of *Proceedings of SPIE*, pp. 653–663 (2004)
73. Wright, J.T., Marcy, G.W., Howard, A.W., Johnson, J.A., Morton, T.D., Fischer, D.A.: The Frequency of Hot Jupiters Orbiting nearby Solar-type Stars. *ApJ* **753**, 160 (2012)
74. Yee, J.C., Fazio, G.G., Benjamin, R., Kirkpatrick, J.D., Malkan, M.A., Trilling, D., Carey, S., Ciardi, D.R., Apai, D., Ashby, M.L.N., Ballard, S., Bean, J.L., Beatty, T., Berta-Thompson, Z., Capak, P., Charbonneau, D., Chesley, S., Cowan, N.B., Crossfield, I., Cushing, M.C., de Wit, J., Deming, D., Dickinson, M., Dittmann, J., Dragomir, D., Dressing, C., Emery, J., Faherty, J.K., Gagne, J., Gaudi, B.S., Gillon, M., Grillmair, C.J., Harris, A., Hora, J., Ingalls, J.G., Kataria, T., Kreidberg, L., Krick, J.E., Lowrance, P.J., Mahoney, W.A., Metchev, S.A., Mommert, M., Migo Mueller, M., Shvartzvald, Y., Smith, H., Stevenson, K.B., Teplitz, H.I., Willner, S.P.: The Science Case for an Extended Spitzer Mission. *ArXiv e-prints* (2017)
75. Yurchenko, S.N., Tennyson, J.: Exomol: molecular line lists for exoplanet and other atmospheres. In: Stehlé, C., Joblin, C., d'Hendecourt, L. (eds.) *EAS Publications Series*, vol. 58 of *EAS Publications Series*, pp. 243–248 (2012)
76. Zhang, Z., Zhou, Y., Rackham, B., Apai, D.: The Near-Infrared Transmission Spectra of TRAPPIST-1 Planets b, c, d, e, f, and g and Stellar Contamination in Multi-Epoch Transit Spectra. *arXiv:1802.02086* (2018)