



Contents lists available at ScienceDirect

EBioMedicine

journal homepage: www.ebiomedicine.com
EBioMedicine
 Published by THE LANCET

Research paper

Effects of rising amyloid β levels on hippocampal synaptic transmission, microglial response and cognition in $APP_{Swe}/PSEN1_{M146V}$ transgenic mice

 Evelyn Medawar^{a,1}, Tiffanie A. Benway^{a,1}, Wenfei Liu^{a,1}, Taylor A. Hanan^a, Peter Haslehurst^{a,2}, Owain T. James^a, Kenrick Yap^a, Laurenz Muessig^{a,3}, Fabia Moroni^a, Muzammil A. Nahaboo Solim^{a,b}, Gaukhar Baidildinova^{a,c}, Rui Wang^a, Jill C. Richardson^{a,4}, Francesca Cacucci^a, Dervis A. Salih^a, Damian M. Cummings^{a,*}, Frances A. Edwards^{a,*}
^a Department of Neuroscience, Physiology & Pharmacology, University College London, Gower Street, London, WC1E 6BT, UK.^b Institute of Cellular Medicine, Newcastle University Medical School, Framlington Place, Newcastle upon Tyne, NE2 4HH, UK.^c Department of Science and Innovations, Asfendiyarov Kazakh National Medical University, Zhamakayev Street, Almaty, A26P6B5, Kazakhstan.

ARTICLE INFO

Article history:

Received 20 September 2018

Received in revised form 3 December 2018

Accepted 5 December 2018

Available online xxx

Keywords:

 Alzheimer's disease
 Dementia
 Mouse model
 Synaptic transmission
 Microglia
 Plaque
 Neurodegeneration

ABSTRACT

Background: Progression of Alzheimer's disease is thought initially to depend on rising amyloid β and its synaptic interactions. Transgenic mice ($TASTPM; APP_{Swe}/PSEN1_{M146V}$) show altered synaptic transmission, compatible with increased physiological function of amyloid β , before plaques are detected. Recently, the importance of microglia has become apparent in the human disease. Similarly, $TASTPM$ show a close association of plaque load with upregulated microglial genes.

Methods: CA1 synaptic transmission and plasticity were investigated using in vitro electrophysiology. Microglial relationship to plaques was examined with immunohistochemistry. Behaviour was assessed with a forced-alternation T-maze, open field, light/dark box and elevated plus maze.

Findings: The most striking finding is the increase in microglial numbers in $TASTPM$, which, like synaptic changes, begins before plaques are detected. Further increases and a reactive phenotype occur later, concurrent with development of larger plaques. Long-term potentiation is initially enhanced at pre-plaque stages but decrements with the initial appearance of plaques. Finally, despite altered plasticity, $TASTPM$ have little cognitive deficit, even with a heavy plaque load, although they show altered non-cognitive behaviours.

Interpretation: The pre-plaque synaptic changes and microglial proliferation are presumably related to low, non-toxic amyloid β levels in the general neuropil and not directly associated with plaques. However, as plaques grow, microglia proliferate further, clustering around plaques and becoming phagocytic. Like in humans, even when plaque load is heavy, without development of neurofibrillary tangles and neurodegeneration, these alterations do not result in cognitive deficits. Behaviours are seen that could be consistent with pre-diagnosis changes in the human condition.

Funding: GlaxoSmithKline; BBSRC; UCL; ARUK; MRC.

© 2018 Published by Elsevier B.V. This is an open access article under the CC BY-NC-ND license (<http://creativecommons.org/licenses/by-nc-nd/4.0/>).

* Corresponding authors.

E-mail addresses: medawar@cbs.mpg.de (E. Medawar),tiffanie.benway@smallpharma.co.uk (T.A. Benway), wenfei.liu.10@ucl.ac.uk (W. Liu),peter.haslehurst@pharm.ox.ac.uk (P. Haslehurst), lmussig@ucl.ac.uk (L. Muessig),muzammil.solim.09@ucl.ac.uk (M.A. Nahaboo Solim), r.wang@ucl.ac.uk (R. Wang),jill.richardson1@merck.com (J.C. Richardson), f.cacucci@ucl.ac.uk (F. Cacucci),dervis.salih@ucl.ac.uk (D.A. Salih), d.cummings@ucl.ac.uk (D.M. Cummings),f.a.edwards@ucl.ac.uk (F.A. Edwards).¹ Joint first authors.² Current address: Department of Pharmacology, Oxford University, Mansfield Road, Oxford, OX1 3QT, UK.³ Current address: Department of Cell and Developmental Biology, University College London, Gower Street, London, WC1E 6BT, UK.⁴ Neurosciences Therapeutic Area, GlaxoSmithKline R&D, Gunnels Wood Road, Stevenage, SG1 2NY, UK.

1. Introduction

The onset and progression of Alzheimer's disease (AD) is most likely initiated by environmental factors interacting with predisposed genetic risks, many of which have now been identified in genome-wide association studies (see reference 1 for review). In familial AD, an inherited mutation causes rising amyloid β ($A\beta$) levels and it has long been established that this triggers a chain of events that leads to the eventual cognitive decline [2]. In sporadic AD, it is highly likely that initial triggering events (genetic and/or environmental) also lead to rising $A\beta$ and that, like in the familial disease, $A\beta$ levels represent an essential contributor to the ongoing pathology and eventual neurodegeneration [3,4].

<https://doi.org/10.1016/j.ebiom.2018.12.006>2352-3964/© 2018 Published by Elsevier B.V. This is an open access article under the CC BY-NC-ND license (<http://creativecommons.org/licenses/by-nc-nd/4.0/>).

Please cite this article as: E. Medawar, T.A. Benway, W. Liu, et al., Effects of rising amyloid β levels on hippocampal synaptic transmission, microglial response and cogn..., EBioMedicine, <https://doi.org/10.1016/j.ebiom.2018.12.006>

Research in context

Evidence before this study

There is a large body of research examining many aspects of phenotypes associated with mouse models of Alzheimer's disease – a PubMed search for the terms Alzheimer* AND mouse returns in excess of 21,000 articles. However, there are few systematic articles pulling together pathological, functional (electrophysiological), and behavioural analyses across the life-span of such models. There is also a number of conflicting outcomes, for example reports of impaired versus enhanced synaptic plasticity; cognitive impairments or not.

Recently, the importance of microglia in Alzheimer's disease has come to the fore in human genome-wide association studies (GWAS), with variants of a number of microglial genes identified as risk-factors for developing the disease. Interestingly, we have recently reported that *Trem2* and other genes identified as risk-factors in humans are strongly up regulated in close association to plaque development in the mouse model used in this study. Moreover, this previous study predicted two of the most recently identified genes that were identified in GWAS since the publication of our paper.

We have previously used this model to identify the earliest synaptic changes and shown changes in release of glutamate, the primary excitatory neurotransmitter in the brain, to occur even before plaques are detectable.

Added value of this study

By studying this transgenic mouse model of Alzheimer's disease, throughout the development of plaques, from prior to detection through to heavy plaque loads, we have been able to identify a clear time course of key phenotypic changes associated with early disease. In particular, this study identifies the very early changes in microglia and can separate the time course of the microglial phenotype. In addition, we detail the changes in synaptic plasticity over time and importantly identify that, like in humans in the absence of Tau tangles or neurodegeneration, considerable synaptic changes and a heavy plaque load can occur without resulting in substantial cognitive loss.

Implications of all the available evidence

Our data indicate that rising amyloid β prior to detectable plaque deposition results in changes in synaptic function that likely reflect an enhanced physiological effect of amyloid β . At this stage, microglia proliferate but do not activate. Once plaques begin to appear, microglia migrate to surround the plaque and become phagocytic, likely targeting dystrophic synapses and neurites caused by the cloud of highly-toxic amyloid β around the plaque. Similarly to humans, who have plaques but no tangles and have yet to develop substantial neurodegeneration, cognitive deficits are not seen, even with a heavy plaque load; behavioural changes are limited to anxiety-like effects.

This investigation of the parallel time-course of events highlights the probability that, if progression of disease can be reversed or slowed early enough, before Tau tangles and substantial neurodegeneration occur, the symptoms of cognitive decline could be very largely avoided. Moreover, it suggests that the substantial increases in microglia number and upregulation of their specific gene expression in association with plaques is not associated with cognitive loss and may indeed be protective.

Under normal physiological conditions, A β acts as an activity-dependent synaptic modulator which, when released from presynaptic neuronal terminals, increases probability of glutamate release [5]. Inappropriate neuronal activity and/or genetic imbalances in production versus clearance mechanisms may thus lead to a prolonged rise in A β levels [6], enabling the formation of A β oligomers and deposition of plaques. It is notable that restoring γ -frequency oscillations in transgenic mouse models expressing genes harbouring familial mutations associated with familial AD, reduces A β load [7] and restores cognitive deficits [8].

Animal models for AD have generally depended on transgenic expression, or more recently knock-in of the gene variants that cause the familial dominantly inherited forms of the disease, particularly amyloid precursor protein (*APP*) or presenilin 1 or 2 (*PSEN1* or *PSEN2*). This is an effective approach for initiating the rise in A β and the deposition of plaques, albeit by a different trigger than in sporadic AD. According to the 'amyloid hypothesis', in the human disease, a rise in A β levels and plaque deposition is suggested to lead to altered neuronal ionic homeostasis and increased oxidative stress. Together, these may result in increased kinase activity on microtubule-associated protein Tau, resulting in Tau hyperphosphorylation and neurofibrillary tangle formation [9]. The exact mechanisms linking A β and Tau phosphorylation remain unclear and unfortunately, despite the initiation of A β pathology, mouse models with genes for familial Alzheimer's disease do not completely recapitulate these later events. As documented in the initial descriptions of the TASTPM mice, which are hemizygous for both human *APP*_{Swe} and human *PSEN1*_{M146V}, plaques are first detected at approximately 4 months of age and a considerable plaque load develops by 8 months [10,11]. Furthermore, phosphorylation of Tau is detectable in the dystrophic neurites around plaques [11], recently suggested to be an early stage of Tau pathology [12]. An inability to extinguish hippocampal-dependent contextual fear conditioning at 4 months when plaques are first detected [13,14] and a deficit in novel object recognition at 6 months [15], have also been reported.

We recently reported alterations in synaptic transmission preceding the detection of plaques, manifesting as a loss of spontaneous action potentials in Schaffer collateral axons and a concomitant increase in probability of glutamate release [16]. Importantly, we have demonstrated an almost 1:1 correlation of plaque load with expression of a module of microglial genes throughout the life of these and other transgenic mice. This correlation in A β mice contrasts with the interaction of microglia and neurofibrillary tangles in mice with Tau mutations, in which microglial genes are only upregulated with advanced tangle load (www.mouseac.org) [10].

Here we extend our previous studies on TASTPM mice to understand the relationship between early changes in synaptic transmission, synaptic plasticity, cognitive function and microglia. We study the development of plaques in more detail and dissect out the microglial response to distinguish between the numbers of microglia and their phagocytic status. We find that, like synaptic changes, microglia are more prevalent even before plaques are detectable, whereas their phagocytic phenotype is age-related, coming much later. We then proceed to study hippocampal synaptic plasticity and hippocampus-dependent learning, in the forced-alternation T-maze, enabling identification of A β phenotypes, finding little cognitive deficit even with a heavy plaque load but clear behavioural changes, probably related to increased levels of anxiety.

While we continue to focus mainly on the previously defined TASTPM mice (double hemizygotes), we have broadened the study to investigate dose dependency of the transgene by including mice homozygous for both genes. The effect of the individual genes is also investigated in mice with hemizygous expression of only one or the other gene. When not otherwise defined, TASTPM mice hence refers to the double hemizygous mouse.

2. Methods

2.1. Animals

All experiments were performed in agreement with the UK Animals (Scientific Procedures) Act 1986, with approval from the UCL Animal Welfare and Ethical Review Body and in agreement with the GlaxoSmithKline statement on use of animals. Male TASTPM mice and C57Bl/6j mice were supplied by GlaxoSmithKline and bred either at Charles River Laboratories International, Inc. (Margate, UK) or at UCL by crossing male homozygous TASTPM with female C57Bl/6j. Age-matched, non-littermate male C57Bl/6j mice were used as wild type controls. In some experiments, double homozygous TASTPM were bred. Single mutant TAS (*APP_{Swe}*) [17] or TPM (*PSEN1_{M146V}*) [15] mice were bred by crossing hemizygous parents. Mice from Charles River were shipped to UCL upon weaning at 21-days-old.

In this study we avoided single housing by keeping mice in large open cages (20 cm × 35 cm × 45 cm) and enriching their environments. Under these conditions, while the aggressive nature of the TASTPM mouse is not completely avoided, it is less of a problem and allows group housing to be maintained over the lifetime of the mice. Thus, cages containing 2–8 male mice were maintained in a 12-h light/12-h dark cycle with food (Envigo 2018 Teklad global 18% protein rodent diet) and water ad libitum. Environmental enrichment consisted of changes of food location, bedding type (e.g. tissue, shredded paper, paper roll, paper bags) and inanimate objects (e.g. running wheels, rodent balls, tubing, houses (mostly purchased from Eli Lilly Holdings Limited, Basingstoke, UK)) within the cage at least once per week. Mice were used for experimentation at the ages stated (± 0.5 months) and, where unavoidable, were single-housed for no longer than 24 h. Tails or ear punches were used for genotyping by standard PCR protocols to ensure the presence of the expected genes.

2.2. Genotyping

2.2.1. Genotype confirmation using conventional PCR methods

Briefly, genomic DNA was extracted using the 'HotSHOT' lysis method. Alkaline lysis reagent (25 mM NaOH, 0.2 mM EDTA, pH 12) was added to tissue samples prior to heating to 95 °C for 30 min. The sample was then cooled to 4 °C before the addition of neutralisation buffer (40 mM Tris-HCl, pH 5). The PCR reaction was performed through addition of MyTaq DNA Polymerase (BioLine) reaction buffer and primer pairs:

TAS (*APP_{Swe}*):

5' GAATTGACAAGTCCGAGGG 3'

5' GGGTACTGGCTGCTGTTGTAG 3'

TPM (*PSEN1_{M146V}*):

5' GTTACCTGCACCGTTGCTCT 3'

5' GCTCCTGCCGTCTCTATTG 3'

using the cycling parameters: 94 °C (30 s), 58 °C (30 s), 72 °C (30 s), for 30 cycles and a final extension at 72 °C for 4 min. PCR product sizes 366 bp for TAS and 104 bp for TPM.

2.2.2. Immunohistochemistry

Animals were deeply anaesthetised (1:10 Euthatal:Intra-Epicaine, National Veterinary Supplies) and transcardially perfused with 0.1 M phosphate buffer saline (PBS) followed by 10% buffered formal saline (Pioneer Research Chemicals Ltd). Alternatively, single hemispheres were drop-fixed immediately following brain extraction; the opposite hemisphere used for electrophysiology. The brains were post-fixed in 10% buffered formal saline for 24 h and cryoprotected in 30% sucrose/0.03% sodium azide/PBS at 4 °C for at least 24 h before sectioning or storage. Transverse sections were cut at 30 μ m through the full left hippocampus using a frozen sledge microtome (SM 2000 R, Leica) and collected into a 24-well plate containing PBS/sodium azide (0.03%) for storage at 4 °C. Serial sections were placed in separate wells until all

Table 1

Antibodies used for immunohistochemistry.

Antibody	Dilution	Source	RRID
IBA1	1:500	Wako (019-19741)	AB_839504
CD68	1:500	BioRad (MCA1957)	AB_322219
A β 1-40	1:300	ThermoFisher (44-136)	AB_2533599

wells contained a section and collection then continued serially from Well 1 so that within each well the transverse sections were from the length of the hippocampus at least 720 μ m apart.

Standard immunohistochemical techniques were employed. For A β staining only, antigen retrieval was achieved by submerging sections in 10 mM sodium citrate (pH 6.0) in 0.05% Triton X-100 and heated in a water bath at 80 °C for 30 min. Sections for all immunohistochemistry were then washed in PBS, followed by 0.3% Triton X-100 in PBS and subsequent blocking in 8% horse serum/Triton/PBS for 1 h. Incubation with primary antibody (Table 1) in blocking solution was performed overnight at 4 °C. Sections were again washed with Triton/PBS. The appropriate Alexa-conjugated secondary antibody (1:500; Invitrogen) was added to blocking solution for a 2-h incubation at room temperature in the dark. Following PBS wash, DAPI was applied to all sections for 5 min. Sections were washed for a final time in PBS before mounting. Age-matched sections from wild type controls were stained in parallel for all ages. Sections were mounted in anatomical order onto SuperFrost Plus glass slides by floating on PBS and then cover-slipped using Fluoromount G mounting medium.

2.2.3. Imaging and data analysis

Sections were imaged for quantification using an EVOS FL Auto Cell Imaging System (Life technologies). Tiled images were taken of the whole transverse hippocampal section using a 20 \times objective. To determine cell densities, an area of 400 μ m × 240 μ m was defined in the CA1, CA3 and the inner blade of the dentate gyrus. Cell counts were performed using Adobe Photoshop CS6. A minimum of three sections were used to create a mean for each animal. Sections for any given condition were obtained from the same collection well within the 24-well plate and were therefore a minimum of 720 μ m apart, thus avoiding multiple counts of the same cells. Counts of objects touching the boundaries of the area of interests were only included from the north and east borders and excluded from the south and west borders.

2.2.4. Electrophysiological recordings

2.2.4.1. Acute hippocampal brain slice preparation. Mice were decapitated and the brain rapidly removed and placed in ice-cold dissection artificial cerebrospinal fluid (ACSF, containing (in mM): 125 NaCl, 2.4 KCl, 26 NaHCO₃, 1.4 NaH₂PO₄, 20 D-glucose, 3 MgCl₂, 0.5 CaCl₂, pH 7.4, ~315 mOsm/l). After approximately 2 min in ice-cold dissection ACSF, the brain was prepared for slicing by removing the cerebellum, hemisection of the forebrain and a segment cut away from the dorsal aspect of each hemisphere at an angle of approximately 110° from the midline surface to optimise slicing transverse to the hippocampus. Each hemisphere was then glued with cyanoacrylate (Loctite 406, Henkel Loctite Limited, UK) on this surface onto the stage of a vibrating microtome (Integraslice model 7550 MM, Campden Instruments, Loughborough, UK) containing frozen dissection ACSF and 400 μ m transverse slices of hippocampus cut. As each slice of a hemisphere was cut, the hippocampus was dissected out, retaining a portion of entorhinal cortex and the resulting smaller slice was placed into a chamber containing 'Carbogenated' (95% O₂/5% CO₂; BOC Limited) dissection ACSF at room temperature (approximately 21 °C). After 5 min, slices were then transferred into a fresh chamber held at 36 °C with the same dissection ACSF. At 5 min intervals, they were then consecutively transferred to physiological Ca²⁺ and Mg²⁺ ion concentrations (in mM): i) 1 Mg²⁺, 0.5 Ca²⁺; ii) 1 Mg²⁺, 1 Ca²⁺; iii) 1Mg²⁺, 2 Ca²⁺.

2.2.4.2. Patch-clamp recordings in brain slices. Once transferred to 1 Mg^{2+} , 2 Ca^{2+} ACSF, slices were allowed to return to room temperature and after at least a further 40 min recovery time, a single slice was transferred to a submerged chamber and superfused with recording ACSF (containing (in mM): 125 NaCl, 2.4 KCl, 26 NaHCO_3 , 1.4 NaH_2PO_4 , 20 D-glucose, 1 MgCl_2 , 2 CaCl_2 , bubbled with Carbogen). Individual CA1 pyramidal or dentate gyrus granule neurones were visualised using infrared-differential interference contrast microscopy on an upright microscope (model BX50WI, Olympus, UK). Glass microelectrodes for patch-clamp were pulled from borosilicate glass capillaries (Catalogue number GC150F-7.5, 1.5 mm OD \times 0.86 mm ID, Biochrom-Harvard Apparatus Ltd., Cambridge, UK) on a vertical puller (model PP830, Narishige International Ltd., London UK). Electrodes (tip resistance approximately 5 $\text{M}\Omega$) were filled with a CsCl-based internal solution (containing (in mM): 140 CsCl, 5 HEPES, 10 EGTA, 2 Mg-ATP , pH 7.4, ~290 mOsm/l). Patch-clamp recordings were performed using an Axopatch 1D (Molecular Devices, Sunnyvale, CA, USA), and current signals low-pass filtered at 10 kHz then 2 kHz (Brownlee Precision Model 440, NeuroPhase, Santa Clara, CA, USA) during digitization (10 kHz; 1401plus, Cambridge Electronic Design, Limited, Cambridge, UK) and acquired using WinWCP (for isolated events; version 4.6.1; John Dempster, Strathclyde University, UK) and WinEDR (for continuous recordings; John Dempster, Strathclyde University, UK). Stimulation was applied via a patch electrode filled with ACSF, placed extracellularly in the appropriate axon path using a square pulse constant-voltage stimulator (100 μs ; DS2A-MkII, Digitimer Ltd., UK) triggered by WinWCP.

WinEDR synaptic analysis software was used for detection of spontaneous and miniature currents and WinWCP used to analyse identified spontaneous, miniature and evoked currents. Criteria for detection of spontaneous or miniature currents was to remain over a threshold of 3 pA for 2 ms. Currents were inspected by eye and only included if the rise time was < 3 ms and faster than the decay.

2.2.4.3. Field potential recordings in brain slices. Slices were transferred as needed to a heated ($30 \pm 1^\circ\text{C}$) submerged chamber and superfused with ACSF and allowed to recover for 1 h in the recording chamber. A glass stimulating electrode (filled with ACSF, resistance ~2 $\text{M}\Omega$) and an identical recording electrode (connected to an AxoClamp 1B via a $1\times$ gain headstage) were both positioned in stratum radiatum of the CA1 field to obtain a dendritic excitatory postsynaptic field potential (fEPSP). Recordings were controlled and recorded using WinWCP software (as above), filtered at 10 kHz and subsequently at 3 kHz and digitized at 10 kHz via a micro1401 interface (Cambridge Electrical Designs, UK). Stimuli (constant voltage 10–70 V, 100 μs ; model Digitimer DS2A-MkII or Grass SD9) were applied at 0.1 Hz and resultant fEPSPs subsequently averaged over consecutive 1-min intervals. Stimulation intensity was set at approximately 30–50% of the intensity required to evoke a population spike or the maximum fEPSP amplitude obtained and a ≥ 15 -min stable baseline recorded. LTP conditioning was applied at test-pulse stimulus intensity and consisted of either 3 trains of tetani, each consisting of 20 pulses at 100 Hz, 1.5 s inter-train interval; or 4 trains of theta-burst stimuli, each train consisting of 4 pulses at 100 Hz repeated 8 times at 20 Hz; inter-train interval 1 min. Following conditioning, fEPSPs were evoked at 0.1 Hz for 1 h.

2.2.5. Behavioural testing

2.2.5.1. T-maze forced alternation task. Previously reported methods, optimised for mouse, were used to assess hippocampus-dependent learning [18]. Mice were food deprived to 90% free-feeding-weight, beginning 2 days before the start of the habituation phase and with ad libitum access to water. Each mouse was handled at the start of food deprivation and throughout T-maze habituation for 15–20 min per weekday.

The T-maze was constructed from three arms, each measuring 50 cm \times 8 cm with 10 cm colourless Perspex walls and a grey floor, mounted on a table in the centre of a room with numerous distal visual cues, such as black and white posters on the walls. Black barriers were used to block the start and goal arms. Reward consisted of a drop of Nestlé Carnation™ condensed milk that was placed at the end of each goal arm. Arms were cleaned with 70% ethanol between all runs to reduce odour cues. In addition, in an inaccessible well a drop of reward is always present in both arms.

Mice received 4 days of habituation to the maze, during which time they were allowed to explore the maze for 5 min with all arms open. During the first two days of habituation, reward was scattered along the floor and in food wells to encourage exploratory behaviour; then restricted to only the food wells at the ends of the goal arms in the last two days.

The behavioural regime lasted for three weeks, with five days of training per week. Each day, animals received six trials; each trial consisted of a sample and choice run. In the sample run, one arm was blocked off. The mouse was placed at the starting point at the base of the T, the barrier was removed and the mouse was allowed to go to the available arm and given 20 s to eat a drop of reward from the food well. For the choice run, the mouse was immediately returned to the starting point and the barrier in the previously blocked arm removed. The starting barrier was then raised and the animal allowed to choose between the two arms but only rewarded if it chose the previously unvisited arm. Thus, a correct choice was scored when the mouse selected the arm not visited in the sample run. After the choice run, the mouse was removed from the maze and placed in its holding box. The location of the sample arm (left or right) was varied pseudorandomly across the session and mice received three left and three right presentations, with no more than two consecutive trials with the same sample location. Animals were allowed a maximum of 5 min to make a choice to enter a goal arm in both runs before a trial was aborted. If an incorrect arm was chosen during the choice run, the mouse was confined in the arm with no reward for 20 s and then removed from the maze.

During the first two weeks of training the choice run followed immediately after the sample (test) run (there was a delay of approximately 15 s between runs for cleaning and resetting the maze). Data was analysed in blocks of 2 days and hence blocks 1–5 represent the first 2 weeks of training.

On the first day of the third week, mice received a repeat of the previous training sessions in order to assess retention of the task (block 6). On the following four days, longer delays (2–10 min) were introduced between the sample and choice runs to extend the time that the previous choice was to be held in memory (blocks 7 and 8 in response times). During these intervals, each animal was placed in a separate holding box. Each mouse received two of each of the delay periods per day, varied pseudorandomly both within and across days. Response times were calculated from the time that the starting block was removed until the mouse made a choice of arms and all four paws had crossed the entry point. Squads of 15–17 mice were run per day. During training, data are presented as blocks averaged across 2 days for each animal and expressed as mean \pm SEM. For delays the four runs for each delay are averaged.

2.2.5.2. Elevated plus maze. The plus-maze was constructed from two enclosed arms (30 cm \times 5 cm \times 20 cm) and two open arms (30 cm \times 5 cm \times 0.8 cm) connected by a small central platform (5 \times 6 cm); the two closed and two open arms were positioned opposite each other, respectively. The maze was elevated 30 cm above a table.

Mice were placed in the centre of the plus maze facing an open arm and allowed to freely explore the maze for one 6-min trial. The time spent on each arm (open versus closed) was recorded, as well as the number of entries into the arms. An entry into an arm was defined as all four paws resting on a given arm.

2.2.5.3. Open field. The open field consisted of a plastic cylinder (diameter: 47.5 cm, height 36 cm) with a white plastic floor. Mice were placed on the periphery of the open field floor and allowed to explore freely for 30 min. The path of each mouse was recorded using dacQUSB recording system (Axona, St. Albans, U.K) at a sample rate of 50 Hz. The open field was optically divided into a central circle and a peripheral ring, each with equal area. The path of the mouse was analysed offline using ImageProPlus. Path length and dwell times in the periphery and centre were calculated using custom made routines written in Matlab R2010a (MathWorks).

2.2.5.4. Light/dark box. The dark box [19] measured 20 cm × 20 cm × 30 cm, with black walls, floor and lid. The light box measured 30 cm × 30 cm × 30 cm with a white floor and light grey walls. The boxes were connected by an opening in the partition between the two compartments. An overhead light provided bright illumination in the light box. Mice were placed in the centre of the light compartment facing away from the opening and then allowed to explore for a period of 6 min. Time spent in each box and the number of entries into each box were recorded. An entry into a box was defined as all four paws resting inside the given box.

2.3. Statistics

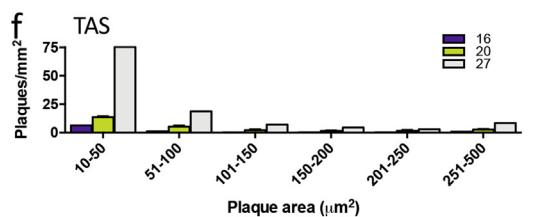
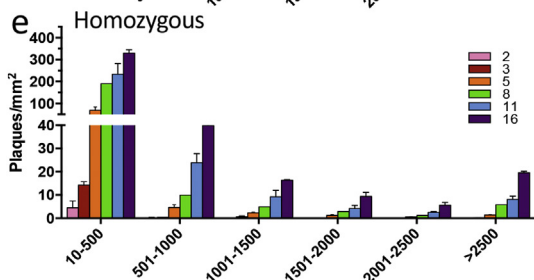
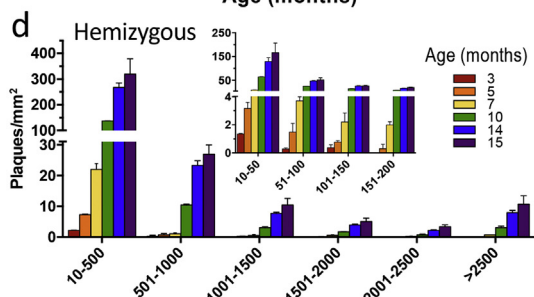
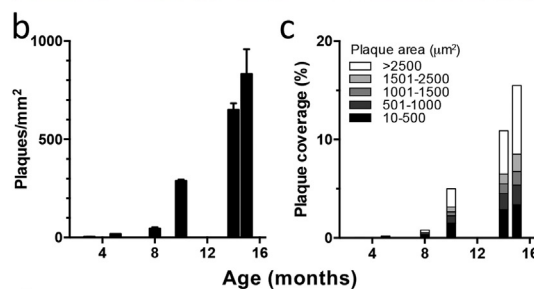
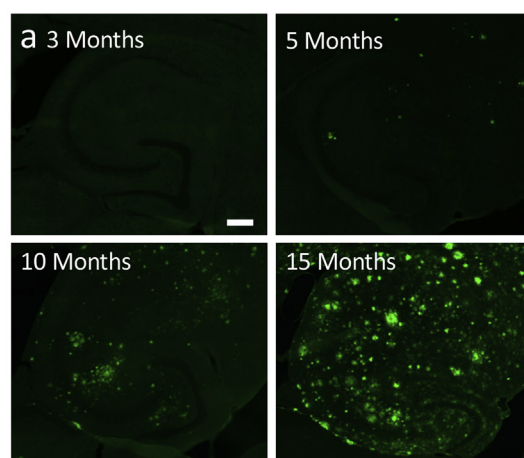
All data analysis was carried out blind to genotype. All statistics were performed using Graphpad Prism 6 with appropriately designed two-tailed *t*-test or ANOVA. Post hoc tests were only performed if a significant interaction between the independent variables was obtained. Animals were considered as independent samples and, where multiple data were collected from an animal, these were averaged (mean) prior to pooling. Thus sample sizes represent the number of animals. Unless stated otherwise, data are presented as mean ± SEM and differences considered significant at $p < 0.05$.

3. Results

3.1. Plaque development in hippocampus

In TASTPM mice of different ages, individual plaques were counted in the hippocampus and their sizes measured to assess whether the distribution changed over time (Fig. 1). Initially, at 3–4 months of age, only small plaques could be detected ($< 100 \mu\text{m}^2$) and these were very sparse (Fig. 1a–c). However, the number of small plaques increased exponentially, initially approximately doubling every month, and continuing to increase at a slower rate until 14 months of age (Fig. 1b). Hence, at least up until this age, new plaques were being seeded. By 7 months plaques up to $200 \mu\text{m}^2$ were consistently seen but were similar in frequency to the smallest plaques at 3–4 months, presumably representing the growth of the earliest seeds. Plaques of $> 500 \mu\text{m}^2$ were only consistently detected at ages over 10 months but, from this age on, a wide range of plaque sizes were evident, with occasional plaques of over $2500 \mu\text{m}^2$ detected. Interestingly, between 14 and 15 months of age, very little change in the number of plaques was detected but the largest plaques continued to grow. As individual plaques were not tracked over time, we cannot be entirely sure that the progression up to 14 months is due to continuous seeding of small plaques that gradually grow with ongoing plaque deposition; however, this seems the most likely explanation. The fact that the rate of addition of small plaques gradually until it plateaus around 14 months of age suggests that, as the plaques get denser, some of the small plaques start to fuse with larger plaques. In some cases, large plaques were present that possessed a halo of A β around the dense core, with dense puncta of A β visible within the halo, possibly representing more recently seeded plaques being engulfed as the large plaque grows (Fig. 1a).

When the gene-dose was doubled by using double homozygous TASTPM mice, plaques were first detected at about 2 months of age (Fig. 1e). Similarly to the hemizygous mice, plaque density and size



increased with age but perhaps surprisingly, did not reach a greater density than that observed in the hemizygotes.

Mice carrying only the single mutations were also examined. In TAS mice (*APP^{Swe}*), small plaques were detected at 16 months. While plaque density and size increased with age, plaque loads did not reach that seen in the double mutant TASTPM mice, even at the very advanced age of 27 months. In TPM mice (*PSEN1^{M146V}*), there were no plaques observed at any age.

3.2. Microglia

Having previously observed that a module of microglial genes increased in expression in A β mice (including TASTPM) in close correlation with plaque load [10], we went on to examine the densities of total and CD68 positive of microglia in more detail in these mice (Fig. 2). There was an increased density of microglia (assessed by Iba1 positive cells) in CA1 at very early ages, with increases (approximately double) compared to wild type already evident by 2 months of age, even before plaques could be detected (Fig. 2a&c; 2–8 months, $n = 6–12$, two-way ANOVA, $p < 0.01$). However, note that A β levels are already raised by 2 months [16] and it is possible that small plaque seeds (< the 10 μm^2 threshold) may already be depositing at this time. There was also an age-dependent increase in Iba1 positive microglia in both wild type and TASTPM mice at around 10 months of age.

In contrast to total microglia, the microglial phagocytic phenotype, as measured by CD68 labelling, was very low in all young animals and only increased from around 10–12 months. Again, this happened in both wild type and TASTPM mice. The percentage of phagocytic microglia tended to be slightly higher in TASTPM mice as compared to wild type (14–20 months, $n = 5–9$, two-way ANOVA $p = 0.07$). This coincided with the appearance of large plaques (Fig. 1c&d). Interestingly, the number of microglia and their CD68 status seem to plateau at this stage, with no further increase in density beyond 12 months of age.

When the double homozygous TASTPM mice were examined, a very similar pattern was observed for densities of both total microglia and CD68 positive microglia (Fig. 2d). As expected both plaque load and microglial response was greater in the homozygous mice.

Sections from single mutant mice were also stained for both IBA1 and CD68. The APP_{Swe} TAS mice, which develop plaques from around 16 months (Fig. 1f), had a higher total and CD68 positive microglia at both 18 and 27 months of age (main effects of genotype for both Iba1 and CD68 in separate two-way ANOVAs; $p < 0.05$). In contrast, the $PSEN1_{\text{M146V}}$ TPM mice, which do not develop plaques at any age, showed no difference from wild type mice in their microglial phenotype at 4 months of age for either total or CD68 positive microglia (Fig. 2g, two-tailed t -test, $p > 0.5$).

Very similar changes in total microglial and CD68 positive microglial densities were found in dentate gyrus, CA3 and subiculum (data not shown).

3.3. Synaptic currents in CA1 neurones

3.3.1. Spontaneous excitatory activity

When spontaneous excitatory currents are recorded from CA1 pyramidal neurones in the presence of a GABA_A receptor antagonist (gabazine, 6 μM), the substantial loss of spontaneous activity we have previously reported up to 4 months of age [16] is largely maintained through to 18 months (Fig. 3a). At 8 months there was almost a complete loss of action potential-dependent spontaneous activity in the transgenic mice (Fig. 3aii), with the frequency almost exactly the same as that of miniature currents (Fig. 3aiii) observed in the presence of 1 μM tetrodotoxin. This result was almost identical to what we have

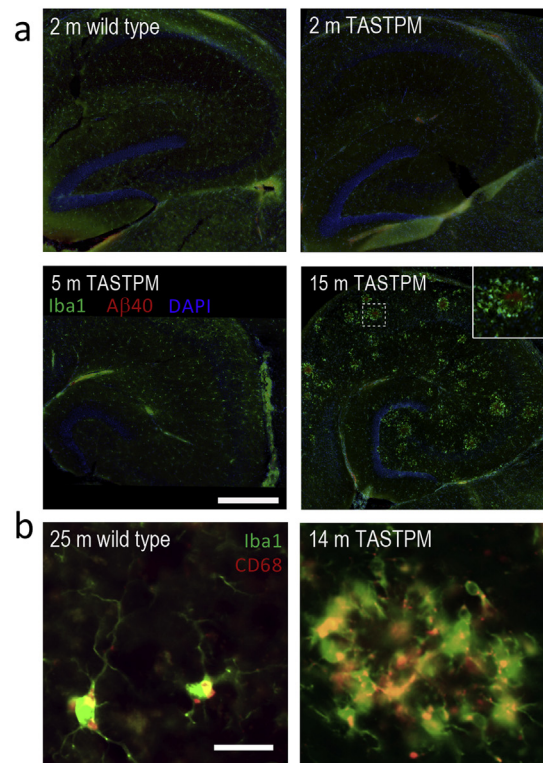
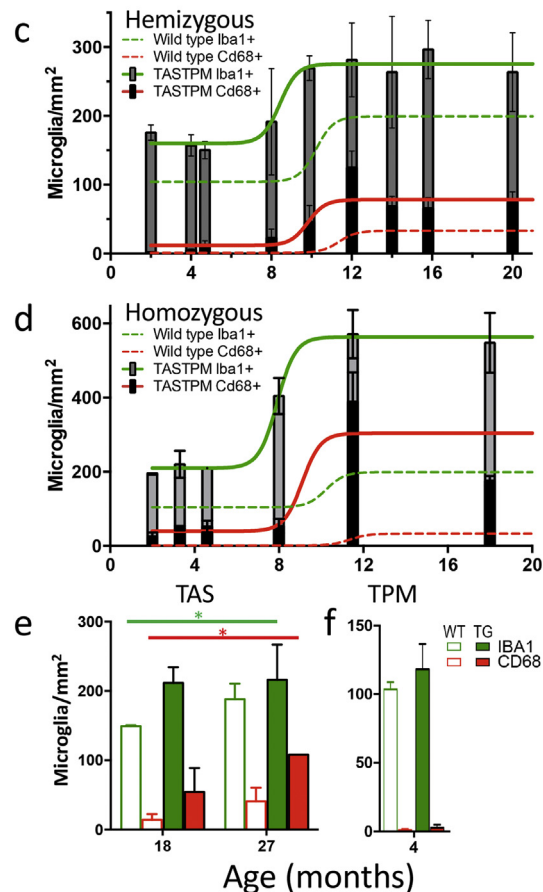


Fig. 1. Plaque development in TASTPM mice. a) Representative micrographs of A β 40 (green) immunofluorescence in hippocampus from 3- to 15-month-old hemizygous TASTPM mice. Scale bar 250 μm . b) Plaque density measured at different ages in TASTPM mice ($n = 2–3$ animals per age group). c) Proportion of plaques of indicated sizes contributing to increased percentage coverage of the hippocampus with increased age. d) Density of plaques within specific size ranges (as indicated on x-axis) over age (colours as indicated in key). The inset covers smaller bin sizes for plaques up to 200 μm^2 . Note the split y-axis. e) Density of homozygous TASTPM plaques within specific size ranges (as indicated on x-axis) over age (colours as indicated in key). Note the split y-axis. f) Density of TAS plaques within specific size ranges (as indicated on x-axis) over age (colours as indicated in key). Note the different x and y-axes in f compared to d and e, with few plaques and maximum plaque area under 500 μm^2 . All data are represented by mean \pm SEM. (For interpretation of the references to colour in this figure legend, the reader is referred to the web version of this article.)



previously reported at 4 months. By 12–18 months, a decrement in frequency of miniature EPSCs had also developed but the action potential mediated spontaneous excitatory current frequency, although significantly lower in transgenic mice than wild type mice, were at a higher frequency than the miniature currents in the same genotype, implying

that some spontaneous action potential-mediated activity was occurring in the transgenic mice at these older ages (Fig. 3a). There were no differences between genotypes of mEPSC amplitudes or decay time constants (data not shown).

When excitatory activity was evoked by stimulating the Schaffer collaterals in slices from older animals, the previously reported increase in release probability at 4 months, as assessed by a lower paired-pulse facilitation and confirmed by a reduction in failure to release glutamate in response to minimal stimulation [16], was maintained. Thus, at 12 months of age, paired-pulse ratio was lower in TASTPM than wild type mice at both 25 and 50 ms inter-stimulus intervals ($n = 5-8$, two-way ANOVA, main effect of genotype $p < 0.02$), while at 18 months of age, the lower paired-pulse ratio was only evident at 25 ms, resulting in a genotype \times interval interaction ($p < 0.05$) and a highly significant Sidak post hoc pairwise comparison between genotype at 25 ms ($p < 0.005$).

3.3.2. Inhibitory activity is unchanged

Although we have concentrated our detailed analysis on glutamatergic activity, we were able to gain an overview of inhibitory activity from the spontaneous activity recorded in the absence of antagonists by utilising CsCl as the internal patch pipette solution. Hence, in the experiments examining pharmacologically isolated EPSCs above, initially spontaneous currents were recorded in the absence of receptor antagonists. When the GABA_A receptor antagonist was included in the perfusion solution, the frequency of currents was decreased to about 5–10% in wild type slices. Consequently, GABA_A receptor-mediated activity contributes about 90% of the frequency of the initial recording of mixed spontaneous activity. Note that, if the recording were made in the presence of a glutamatergic antagonist, any currents that were due to spontaneous glutamatergic activity mediating feed-forward or feedback inhibition would be lost. Hence, the assessment of the drug-free frequency is a better assessment of the contribution of inhibition with the understanding that this will overestimate frequency by about 10%. Under these conditions we find that there is no significant change in inhibitory synaptic activity in TASTPM mice at any age from 4 to 18 months (Fig. 3c). Note that, considering the very substantial change in spontaneous glutamatergic activity, this implies that very little of the GABAergic activity is dependent on glutamatergic input.

3.3.3. Synaptic plasticity is altered in TASTPM mice

Considering the changes in excitatory transmission it seemed likely that synaptic plasticity, in particular long-term potentiation (LTP), the best cellular model we have for the laying down and retrieval of memory [20], could be altered. To assess effects on LTP, field potentials were recorded from CA3-CA1 synapses in acute brain slices prepared from TASTPM mice at ages preceding detectable A β plaques (2 months) through to ages with a heavy plaque load (12–18 months).

Field input-output relationship was not significantly changed at any of the ages tested (Fig. 4a). Moreover, unlike our previously reported result using patch clamp recording in the presence of a GABA_A receptor antagonist [16], in field recordings with the inhibitory network intact, paired-pulse ratios were not significantly changed between genotypes

at any of the ages tested (Fig. 4b). This suggests that the observed changes in paired-pulse ratio were masked when GABAergic activity was not blocked, presumably, at least in part, by feed-forward inhibition decreasing release on the second stimulus.

At 2 months of age, LTP is altered in TASTPM mice but this is dependent on the induction protocol. When LTP was induced by tetanic stimulation in these young mice, the magnitude of LTP was greater in slices from TASTPM than from wild type mice. Paired-pulse ratios remained unaltered when the last ten minutes of the post-induction recordings was compared to the baseline in both genotypes (Fig. 4c&d). This suggested that the change in amplitude seen in LTP was due to a postsynaptic change. In contrast, when LTP was induced using theta-burst stimulation, there was no difference between the wild type and transgenic mice (Fig. 4e). Surprisingly, however, despite LTP remaining unchanged after theta-burst stimulation, the paired-pulse ratio decreased significantly between the pre-induction baseline and the last 10 min of LTP in the TASTPM but not in the wild type mice. This suggests that the locus of expression of this form of LTP is likely to have a presynaptic component in transgenic mice at this age. Note that, considering an increase in release probability would be expected to enhance the postsynaptic response, this would suggest that the postsynaptic contribution to LTP could be decreased in the transgenic mice possibly with one locus of change compensating for the other.

At 4 months of age, the effects of the different stimulus protocols had changed. By this age, a clear deficit was seen in LTP induced by tetanic stimulation, which was the reverse change to that seen at 2 months. Moreover, similar effects were seen in two separate cohorts of 4-month-old mice (cohort 1 shown in Fig. 4c; pooled data shown in Fig. 4d).

TBS-induced LTP (Fig. 4e) was, like at 2 months, of similar magnitude between genotypes but analysis of paired-pulse ratios, following LTP induction, indicated that LTP has a similar locus of expression in the two genotypes.

In addition, chemically-induced LTP was also examined in a separate set of slices, using transient application of the potassium channel blocker tetraethylammonium, applied after completion of a tetanus-induced LTP experiment. As expected, tetraethylammonium application resulted in an initial reduction in the field potential, followed by a long-lasting increase after wash-out. The magnitude of the tetraethylammonium-induced LTP was unchanged in slices of TASTPM compared to wild type animals (data not shown). This confirms that, despite deficits in tetanus-induced LTP, TASTPM are capable of expressing LTP under other induction protocols.

The deficit in tetanus-induced LTP was maintained at 12 and 18 months of age (Fig. 4e).

3.3.4. Synaptic plasticity in TAS and TPM mice

The induction of LTP was also examined in 24 month old single mutant mice (Fig. 4f-h). In age-matched wild type mice, LTP magnitude was similar to that observed at younger ages. In the APP_{Swe} TAS mice, the magnitude of LTP was smaller than wild type mice (Fig. 4f). In contrast, in the PSEN1_{M146V} TPM mice, the magnitude of LTP was greater (Fig. 4g). There was an overall significance between genotypes by one-way ANOVA ($p < 0.05$; Fig. 4h, Fisher LSD post hoc tests versus wild type $p = 0.1$ for TAS and $p = 0.05$ for TPM).

3.4. Cognition and behaviour

3.4.1. TASTPM mice show rigidity in hippocampus-dependent learning

The hippocampus-dependent forced-alternation T-maze task was used to assess cognition in the TASTPM mice at three ages (Fig. 5): 4 months, which corresponds to the first appearance of A β plaques (Fig. 1) and where tetanus induced LTP was first impaired (Fig. 4); 8 months, a moderate plaque load and 12 months, a heavy plaque load. Due to availability of animals, in this set of experiments, the 4-month-old group was run as three cohorts (no significant difference

Fig. 2. Microglial proliferation and activation in TASTPM mice. a) Microglia (Iba1, green) cluster around plaques (A β 1–40, red) in TASTPM mouse hippocampus (nuclei: DAPI, blue). Scale bar 250 μ m. b) Examples of phagocytic microglia (CD68, red + Iba1, green; yellow when colocalised) in wild type and TASTPM hippocampus. Scale bar 25 μ m. c) Total microglial density (Iba1+, full bar height) and phagocytic microglial (Iba1 + CD68+, black bar) density in hemizygous TASTPM mice with age. Sigmoidal fits are shown (Iba1 green; CD68 red): unbroken lines, TASTPM; dashed lines, wild type (only fit shown for wild type). d) Total and phagocytic microglial densities in homozygous TASTPM mice with age. Sigmoidal fits are shown. e) Total and phagocytic microglial densities in the APP_{Swe} TAS mice at the ages shown. Significant main effects of genotype for both IBA1 and CD68 are indicated by * $p < 0.05$. f) Densities of total microglia and CD68 positive phagocytic microglia in 4 month old PSEN1_{M146V} TPM microglia. All data are represented by mean \pm SEM. (For interpretation of the references to colour in this figure legend, the reader is referred to the web version of this article.)

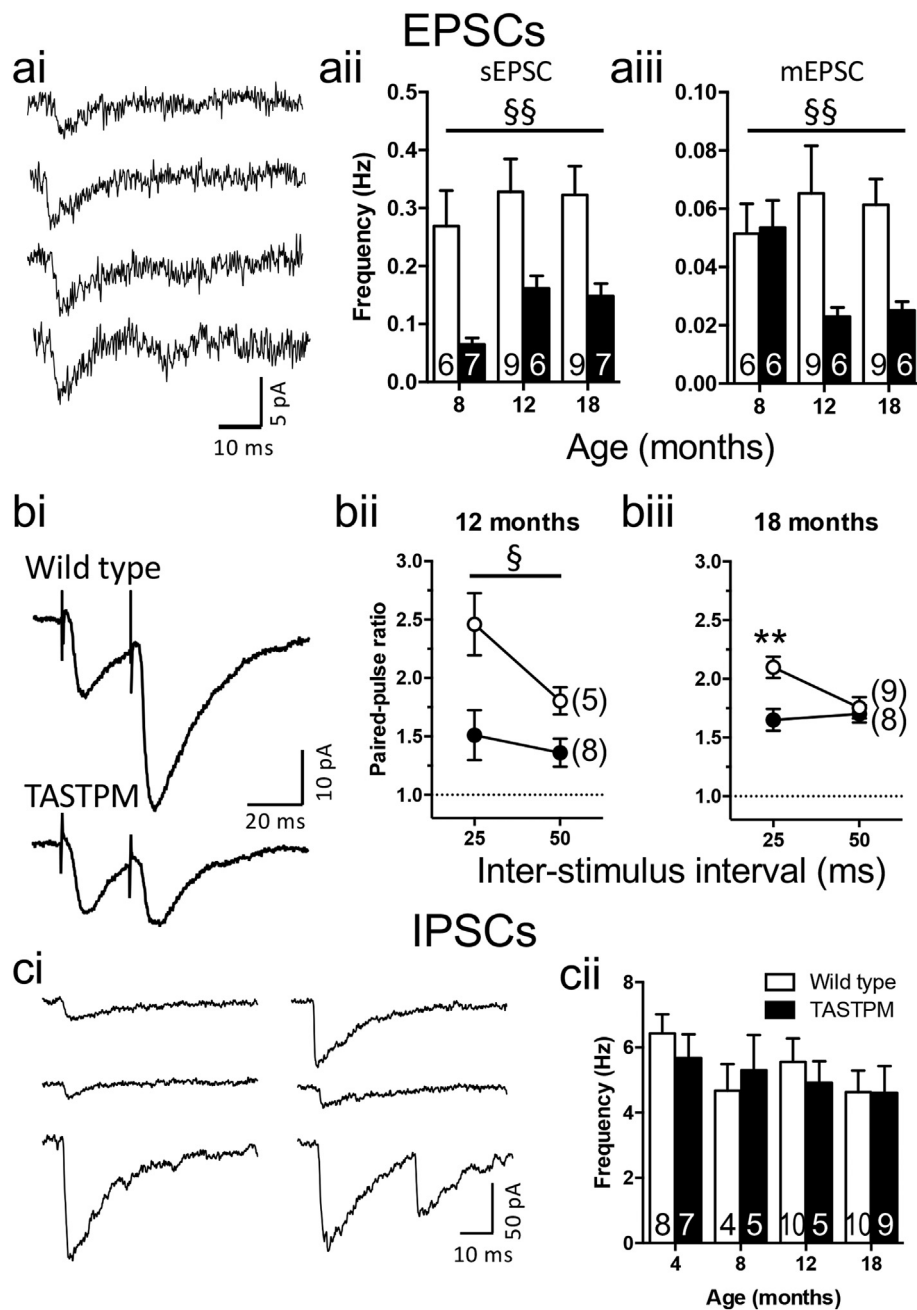


Fig. 3. Excitatory and inhibitory synaptic transmission in TASTPM mice. ai) Example spontaneous and miniature EPSCs recorded from 18-month-old TASTPM. aii) Frequency of spontaneous EPSCs. Main effect of genotype by two-way ANOVA ($\S\S p = 0.0011$). aiii) Frequency of miniature EPSCs. Main effect of genotype by two-way ANOVA ($\S\S p < 0.01$) bi) Example responses evoked by paired stimuli. bii) Paired-pulse ratios from 12-month-old mice. Main-effect of genotype by two-way ANOVA ($p = 0.02$). biii) Paired-pulse ratios from 18-month-old mice. Genotype \times inter-stimulus interval interaction ($p < 0.05$); Sidak post-hoc test is indicated ($p = 0.002$). ci) Example continuous recordings of spontaneous IPSCs. cii) Spontaneous IPSC frequencies. Sample sizes are indicated by the numbers within bars or within parentheses. * $p < 0.05$; ** $p < 0.01$. All data are represented by mean \pm SEM.

between the cohorts); while the 8- and 12-month-old group were a single cohort that underwent repeat training in a longitudinal study. It should be noted that at both 4 and 8 months of age, a subset of TASTPM mice did not complete the task in the required time and these mice were not included in the final results (1 of 16 mice at 4 months of age and 3 of 13 mice at 8 months of age).

At 4 months of age, both genotypes started training at similar levels of performance and improved over the training period (Fig. 5a, two-way ANOVA, main effect of 5 block training period, $p = 0.01$). However, TASTPM performed significantly worse than wild type mice overall (main effect of genotype, $p < 0.003$), and there was no significant interaction between training block and genotype. Interestingly in Block 6, after 2 days without training, the two groups came together with almost

identical performance at 90% correct choices (Fig. 5a). When extra delays (2–6 min) were then added between the sample and choice runs a slight decrement in performance occurred, as expected, but there was no difference between genotypes (Fig. 5b). In terms of the behaviour within the trials it was notable that on both the sample and choice runs the TASTPM mice showed considerably longer response times. In the case of the choice run, this may have influenced the result, especially the apparent impairment during the training period, as the time that memory needed to be retained was more than doubled (Fig. 5c).

At 8 months of age, TASTPM performed similarly to wild type mice, improving over the training period (two-way ANOVA, main effect of training period ($p < 0.0001$)). When the same mice that were run at 8 months were retested at 12 months of age, wild types had, as

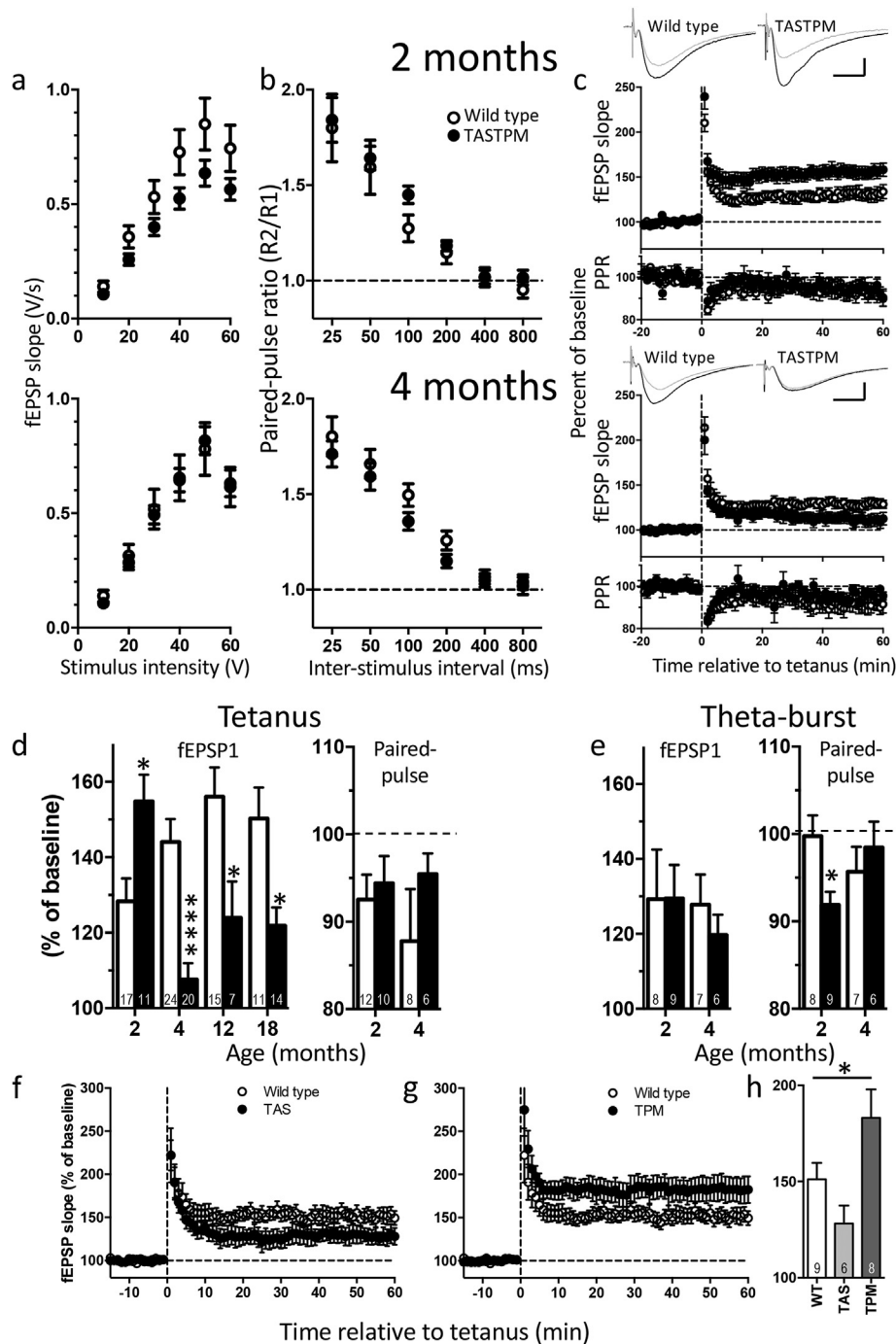


Fig. 4. Field EPSP recordings of synaptic plasticity in TASTPM mice. a-c) 2 months upper row; 4 months lower row. a) Input-output relationship, b) Paired-pulse ratio profile and c) Time course of tetanus-induced LTP: fEPSP (upper panels) and paired-pulse ratio (PPR, lower panels) after induction as a percentage of pre-induction baseline. Traces are representative fEPSPs from baseline (grey) and the 51–60 min after tetanus (black). Scale bars: 5 ms \times 0.5 mV. d) Magnitude of LTP (left) induced by tetanus over 2–18 months of age (number of mice as indicated in each column). Two-way ANOVA revealed significant age \times genotype interaction ($p < 0.0001$). Change in paired-pulse ratio (right) following LTP induction. Both wild type and TASTPM mice showed a significant decrease in PPR compared to baseline at both ages (paired t -tests within separate experiments; $p < 0.05$). No significant difference between genotypes (two-way ANOVA). e) Magnitude of LTP induced by theta-burst stimulation (left, no significant difference between genotypes) and corresponding change in paired-pulse ratio (right; two-way ANOVA age \times genotype interaction $p < 0.05$). Sidak post hoc test: * $p < 0.05$; *** $p < 0.0001$. f) LTP induced by tetanic stimulation in *APP_{Swe}* TAS mice at 24 months of age. g) LTP induced by tetanic stimulation in *PSEN1^{M146V}* TPM mice at 24 months. Wild type animals are common to both panels f and g. h) Magnitude of LTP induced in 24 month old wild type, TAS and TPM mice. 24 month old recordings for all genotypes were interleaved; significance tested by one-way ANOVA, * $p < 0.05$. All data are represented by mean \pm SEM.

expected, returned to the baseline response of approximately 75% correct and again improved from $\sim 75\%$ to $\sim 90\%$ during the training period. Unexpectedly however, TASTPM appeared to have retained their previous training, starting the training at $\sim 90\%$ and showed no further improvement over the training period. This was reflected in a significant interaction between training period and genotype in a two-way ANOVA ($p < 0.03$, Fig. 5a).

Animals were again challenged further by the introduction of a delay between sample and choice runs (Fig. 5c). While at 8 months there was no difference between genotypes, at 12 months of age although TASTPM mice showed a similar decrement with the longest delays their performance with a 2.5 min delay between sample and choice runs was surprisingly better than their wild type counterparts (two-tailed t -test, $p < 0.05$).

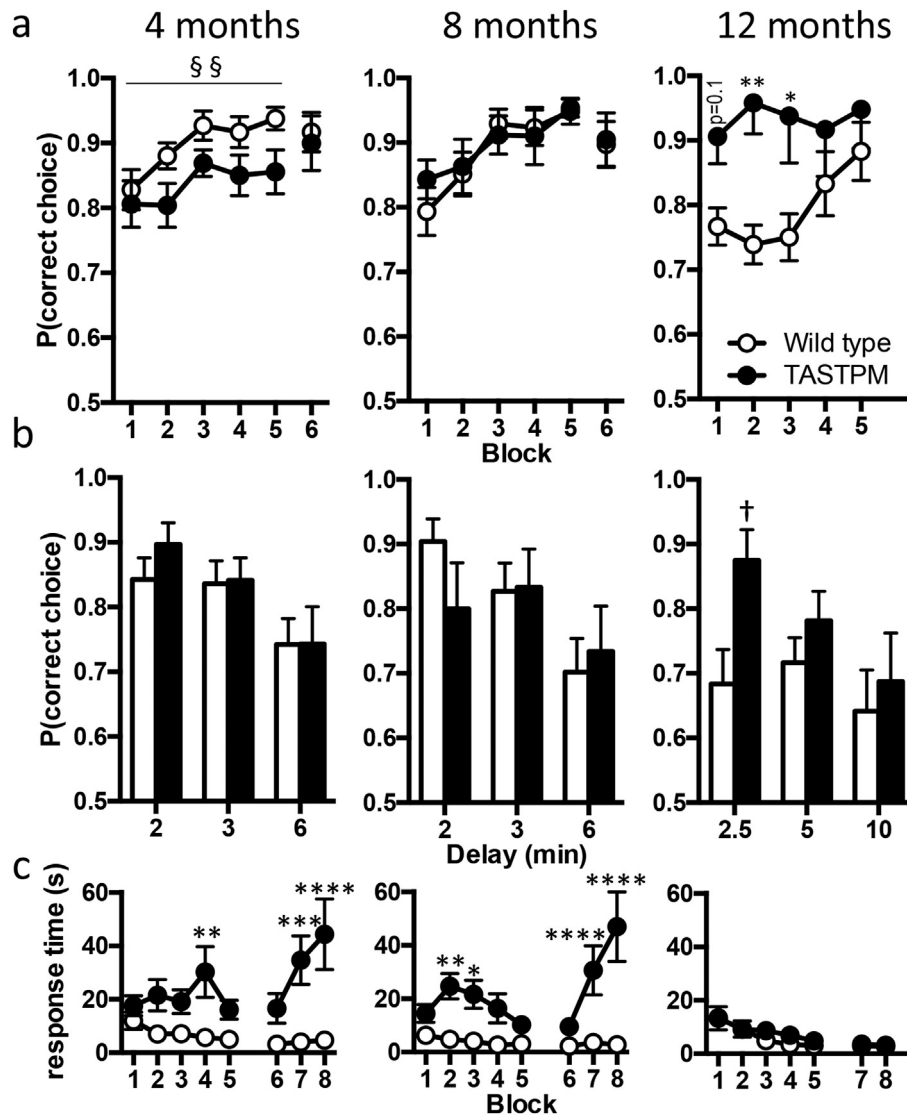


Fig. 5. Hippocampus-dependent T-Maze learning in TASTPM mice. a-c) Ages as indicated above panel a. a) Probability of mice making a correct choice in the choice run at 4 months ($n = 15-16$ animals completing the task), 8 months ($n = 10-13$ animals completing the task) and 12 months of age (wild type $n = 15$; TASTPM $n = 8$). At 4 months of age there was a main effect of genotype in a two-way ANOVA (§§ $p < 0.01$). Note the difference in starting performance at 12 months of age. These are the same mice tested at 8 months. As expected wild type mice started at around 75% correct choices and improved with training having, extinguished their previous training. TASTPM mice unexpectedly started training making correct choices 90% of the time having retained the previous improved level. Two-way ANOVA interaction between training block and genotype ($p < 0.03$); Sidak post hoc analyses are indicated by * $p < 0.05$, ** $p < 0.01$. b) The introduction of delays between sample and choice runs revealed no further differences between genotypes at 4 or 8 months of age, while at 12 months, a significant effect of genotype was observed with TASTPM mice retaining performance despite a 2.5 min delay before the choice run († $p < 0.05$). c) Response time for choice run at 4–12 months of age, Sidak post hoc analyses are indicated by * $p < 0.05$, ** $p < 0.01$, *** $p < 0.001$, **** $p < 0.0001$. All data are represented by mean \pm SEM.

Another interesting difference between the 12-month mice and the younger groups was that the response time for the choice run for TASTPM mice at 12 months was rapid and no different from the wild type mice (Fig. 5c). (Note, at this age the mice also always completed the task in the required time.) In contrast, as described for 4 months above, the 8-month-old TASTPM mice showed a considerable delay to respond. However, despite this delay again increasing the time that memory needed to be retained, the 8 months mice showed no decrement in correct choices.

These failures and delays to respond may be interesting in terms of early behavioural changes and may also suggest different levels of anxiety.

3.4.2. TASTPM mice show decreased activity and increased anxiety-related behaviour compared to wild type mice

In the light of the behavioural differences seen in the T-maze trials, locomotor activity and anxiety were assessed using a battery of tests.

First, mice were placed in an open field (Fig. 6a). TASTPM mice had shorter total path lengths than their wild type counterparts at all ages (Fig. 6ai; two-way ANOVA, main effect of genotype, $p < 0.0001$; no interaction between age and genotype). Furthermore, TASTPM mice spent more time in the peripheral than central area (Fig. 6aii; two-way ANOVA, main effect of genotype, $p < 0.0005$; main effect of age, $p < 0.0001$).

Secondly, at 8 months of age, TASTPM mice spend more time in the closed than open arms of an elevated plus maze (two-way ANOVA interaction between age and genotype $p < 0.05$); at 4 and 12 months of age this difference was not evident (Fig. 6b).

Finally, at 4 and 8 months of age, TASTPM mice spent more time in the closed compartment of a light/dark box (12 months not tested). There was a significant interaction between age and genotype (Fig. 6c; $p < 0.05$).

Overall, these data indicate an increased level of anxiety in TASTPM mice from early stages of plaque development especially at earlier ages.

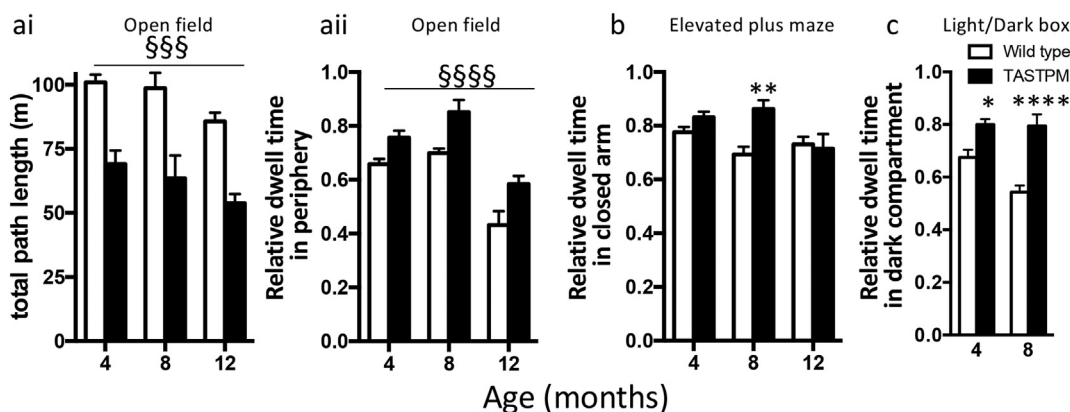


Fig. 6. Open field and tests of anxiety. a) Open field test. a i) Total path length run over 30 mins. Main effect of genotype by two-way ANOVA (§§§ $p < 0.001$). a ii) Time spent in peripheral area. Main effect of genotype by two-way ANOVA (§§§§ $p < 0.0001$). b) Elevated plus maze. Relative time in closed arm. c) Light/dark box. Relative time spent in dark compartment (12 months not testEd.) In b and c, Sidak post hoc tests are indicated (two-way ANOVA genotype \times age interaction $p < 0.05$; * $p < 0.05$; ** $p < 0.001$; **** $p < 0.0001$). All data are represented by mean \pm SEM.

4. Discussion

Proliferation of microglia, particularly clustering around plaques, has been repeatedly reported in Alzheimer's disease, both in the human condition and in mouse models [21–23]. Moreover we have previously reported a close correlation between plaque load and a microglial coexpression module in TASTPM mice. This reveals not only changes in expression of the gene for the phagocytic protein CD68, tested with immunohistochemistry in the present study but also even greater changes in *Trem2* expression [10], a gene shown in humans to be important in Alzheimer's disease in GWAS [24,25]. However, here we show increased density of microglia, even before plaques can be detected in this mouse model. This finding required immunohistochemistry and cell counts as the gene expression changes of such specific microglial genes would only be apparent in whole tissue analysis with very large changes, such as occurs in later stages. In the light of previous reports [21–23], proliferation seems the most likely explanation of the increased density, although other causes such as increased survival of microglia or migration into the hippocampus, are possible. The triggering of microglial proliferation may be due to soluble A β in the wider neuropil, as seem to be the case for the earliest synaptic changes [16]. In addition, it is possible that initial seeds of plaques are already present at this early stage but are too small to detect, being below the detection threshold set here ($<10 \mu\text{m}^2$), which are either detected directly by microglia, or via secondary messengers, particularly altered pro- or anti-inflammatory cytokine levels within the environment (reviewed in reference 26).

In either case, the question arises as to how plaque development then continues and how this relates to increased microglial numbers and development of a reactive phagocytic phenotype. Once plaques are seeded at these early stages, the ongoing deposition may primarily contribute either to the growth of plaques or to the seeding of new plaques. It is also possible that large plaques are not the result of smaller plaques growing but rather due to the fusion of smaller plaques. Here we observe that the smallest plaques initially increase in number, almost doubling each month. This deposition continues to increase, albeit not quite so rapidly, at least until about 14 months of age when the number of plaques plateaus. This suggests that small plaques are seeded throughout the ages tested and gradually grow to form the larger plaques. Presumably the rapid increase in the seeding of plaques during the early stages relates to the rapid increase in A β levels at this stage that we have previously reported [16]. The plateauing of density of smaller plaques may also reflect them gradually being engulfed as the larger plaques spread and thus they are no longer seen as separate entities. This is strongly suggested by the appearance of brighter spots of A β

in the halo around some of the larger plaques as can be seen in Fig. 1a from 10 months onwards.

As plaques form, we have previously shown a very strong correlation with microglial gene expression [10]. This encompasses both proliferation and activation of microglia. While there are more microglia very early in these A β mice, their phagocytic phenotype appears later and seems only to be triggered once the larger plaques of $> 500 \mu\text{m}^2$ develop. However, it is important to note that a step up in the density of total and CD68 positive microglia also occur at this stage in the wild type mice. Although the number of microglia and their activation state remains higher in the TASTPM mice the similarity in the timing of this later stage in both genotypes suggests that this has a strong age-related component rather than being purely dependent on the presence of plaques. However, it is also interesting to note that in the homozygous TASTPM, which develop plaques earlier but plaque load plateaus at the same level as the hemizygous mice, the density of total microglia and CD68 positive microglia is higher than in hemizygotes. Furthermore, the absence of a microglial phenotype in the TPM mice, while the TAS mice show a similar phenotype excludes a direct effect of the mutant presenilin on microglial function.

As has been previously shown in TASTPM [10] and other transgenic mice (for example, see reference 22), the microglia are strongly attracted to and cluster tightly around the plaques as they grow. The question arises as to what the microglia are actually doing in the A β mice. The assumption previously has been that they are removing or limiting expansion of plaques [22]. Conversely, it has been repeatedly reported that removal of microglia by blocking CSF1R has no effect on plaque load [27–29], although a role for microglia in initial plaque deposition has been suggested [30], which may be related to the initial early rise in microglia numbers, even preceding detection of plaques. It is, however, clear in the TASTPM mice that, since plaques continue to grow in both size and number in parallel to rapid microglial proliferation, it does not seem that microglia are very effective at removing A β . Recently interesting evidence has been presented that A β stimulates microglia to phagocytose synapses in a complement dependent manner at early stages of plaque development in J20 (*APP^{Swe/Ind}*) mice [31] leading to the hypothesis that microglia are causing early synaptic damage. We put forward an alternative hypothesis that the microglia are rather removing spines and boutons damaged by the high levels of soluble oligomeric A β in or near the plaques and that this may represent a protective function, avoiding further damage to the dendrites and axons affected and hence protecting network function. This is further supported by the observation that as plaques grow synaptic loss is concentrated near to the plaques and the loss decreases further from plaques [32,33].

At 8 months of age the synaptic changes observed are almost identical to those we have previously reported at 4 months, with no change in miniature currents but a complete loss of spontaneous activity and an increase in release probability of glutamate. Particularly at early stages, the plaque load in terms of the percentage tissue coverage is very low and so very few of the synapses recorded would be close to a plaque. Moreover, the observation that the change in paired-pulse ratio is similar despite a rising plaque load also suggests that the plaques themselves are unlikely to be causing this effect. Hence, this is presumably the result of very low levels of soluble A β throughout the tissue. Increased release probability has been reported to be the physiological effect of A β release in wild type rats [5]. As the plaque load increases and larger plaques start to appear, additional changes become evident. At 12 months, although the evoked release probability is still similarly affected, being higher in the transgenic mice than the wild type mice, there is also a reduction in the frequency of miniature EPSCs. The simplest interpretations of loss of miniature frequency is either a loss of functional synapses or a decreased release probability (see reference 34 for review). As we have demonstrated that release probability is increased, this suggests that a loss of synapses is the likely explanation. In and around the plaques soluble and insoluble A β will be in equilibrium and with increased plaque coverage with age, at least some of the synapses will be directly affected by the high local concentration of A β in the close vicinity of a plaque which could lead to this loss. Note that, unlike evoked currents, miniature synaptic currents can originate from any synapse in the tissue and hence some will be physically near plaques. The increasing effect as the plaque load rises, supports this hypothesis. This is again consistent with the observation that synaptic loss occurs with increased plaque load but that the loss is inversely proportional to distance from a plaque [32]. Consistent with this notion, neuronal hyperactivity occurs proximal to plaques and decreases more distal to plaques within a radius of 60 μ m [35].

It is notable that the decrease in frequency of miniature EPSCs observed at 12 months coincides with the increase in microglial number and activation but that it does not decrease any further by 18 months. This is consistent with the plaque load and indeed the microglial density largely plateauing by 14 months. The very effective microglial proliferation and subsequent phagocytic phenotype, associated with strong up-regulation of microglial genes such as *Trem2* that we have previously reported at this age [10], may be one of the reasons why the progression of Alzheimer's pathology to neurofibrillary tangles and neurodegeneration does not go further in these mice.

The biphasic change in LTP induced by a mild tetanic stimulus at the early stages of pathology in A β mice is of interest. At 2 months of age, prior to detection of plaques and when LTP is enhanced in the A β mice, A β is certainly present, albeit at low levels [10,16]. By 4 months of age, when the first plaques are evident, A β levels are at least 10-fold higher than at 2 months. At this stage the opposite effect is observed with magnitude of tetanus-induced LTP much reduced compared to wild types. This LTP deficit was maintained both at 12 and 18 months of age. The biphasic pattern of change may reflect the increasing glutamate release probability which we have previously shown is greater at 4 months than at 2 months of age. If glutamate were more readily released during conditioning, the initial outcome may be a greater calcium influx through NMDA receptors and thus a larger magnitude LTP. However, as levels rise by 4 months and release probability increases further, depletion of the readily-releasable pool of synaptic vesicles during the first pulses of the conditioning train may result in a failure to release transmitter as the train continues, thus impairing LTP. Alternatively, the higher levels of A β may have other effects, interacting with NMDA receptors directly and impeding LTP (reviewed in reference 36). Moreover, A β is itself proposed to be released in an activity-dependent manner [37–39] and hence, as its levels rise, resulting in increased release probability, this could lead to a positive feedback.

In concert with (or alternatively to) the direct physiological effects of low levels of A β , the early increase in LTP magnitude we report could be an interaction with the mutant presenilin 1. Expression of both normal and mutant presenilin 1 has direct effects on synaptic transmission and plasticity. For example, the A246E mutation leads to increased LTP magnitude at young ages [40,41], while the L286V mutation increases LTP magnitude at young ages but decreases at older (14 month) ages [42]. Here we show that the M146V mutation increases the magnitude of LTP at 24 months of age, which could be the underlying mechanism of the initial increased LTP observed in the TASTPM, until the later A β effects become dominant, decremating the LTP.

Again, cytokines released as part of the immune response to raised A β levels and plaque deposition could offer an additional route for the altered synaptic transmission and plasticity that we observe. It has long been established that cytokines can modulate synaptic plasticity [43] and indeed learning and memory [44].

Interestingly when theta-burst stimulation was used for induction, during which the readily-releasable pool would have a chance to replenish, there was no significant deficit in LTP at 4 months. However, under these conditions at 2 months, we see a decrease in paired-pulse ratio following induction of LTP that remains throughout the experiment, indicating an increase in release probability. As outlined above, the physiological effect of A β is to increase release probability, and so this suggests that the theta rhythm itself may be causing local release of A β at the stimulated synapses. Despite this apparent presynaptic increase in transmission, the magnitude of LTP remains unaltered, raising the possibility of a postsynaptic decrease balancing this effect. However, when TEA was applied to slices, resulting in a wide-spread depolarisation and thus release of all neurotransmitter vesicles (excitatory, inhibitory and modulatory), LTP was induced similarly to wild types confirming that some forms of long-term plasticity remain intact. In our hands, the locus of expression of LTP, induced by tetanus, tends to have a presynaptic component in both genotypes, indicated by a change in paired-pulse profile following induction.

In this study, TASTPM mice showed no measurable cognitive deficits at any age, despite a substantial plaque load. There were, however, clear differences in activity and anxiety related behaviours. The TASTPM mice were slower to perform the T-maze task than the wild type mice or failed to do so altogether. Furthermore, in other tests, decreased activity and increased anxiety were evident. Although not specifically measured, the TASTPM mice are also more aggressive than wild type mice [45].

The improved retention of learning in TASTPM mice, requiring no repeat training when the same mice were tested twice at 8 and 12 months, may appear counterintuitive. However, similar outcomes in hippocampal learning have been reported in TASTPM mice at around 4 months, using a contextual fear conditioning regime. While mice were unimpaired in learning the task in these previous reports, they failed to extinguish their learnt fear behaviour when conditioning was reversed [13,14,46]. In the present study, the difference was additionally noted, with the TASTPM mice also making more correct choices than the wild type mice when a delay between runs was introduced.

The subtlety of the cognitive changes reported here in the TASTPM mouse, even at stages where a heavy plaque load is present, is consistent with previous findings [13–15,46]. Even when other A β models are considered, cognitive deficits are limited and, where present, it is unclear how they truly translate to the human disease (for reviews, see references 47, 48). Moreover, this is consistent with the human condition, where, at the time of diagnosis, when cognitive deficits are first being detected, there is already a substantial reduction in hippocampal volume of up to 20% [49], whereas there is no apparent neuronal loss in TASTPM mice. Furthermore, in humans, cognitive decline correlates well with Tau PET markers and less with A β load [50]. Given that A β mouse models are not a complete model of AD, i.e. lacking Tau tangle formation and neurodegeneration, which more faithfully correlate

with cognitive decline, they should be considered as models of the pre-clinical disease, when A β is first deposited.

Here we bring together the progression of pathology, microglia, synaptic transmission and other functional changes in a preclinical mouse model of AD. In a following paper we compare these results in mice with only plaques and no neurofibrillary tangles to a transgenic mouse model of later stage dementia in which neurofibrillary tangles occur without plaques [51].

From the present study we conclude that the earliest effects of A β on synaptic transmission are probably due to very low levels of soluble A β in the volume of the tissue, rather than being directly related to plaques. At this early stage plaques are extremely small and sparse so that they would impinge directly on very few synapses. However, while widespread soluble A β may also influence early microglial changes these may well be influenced by the earliest seeding of plaques or the release of cytokines into the environment. Later changes most probably relate to the increasing numbers of larger plaques with the cloud of high-level soluble A β surrounding them impinging on a, still limited, but much greater area. The direct effects of this localised high concentration of soluble A β include loss of active synapses and activation of microglia, likely involved in clearing damaged synapses near or within plaques via phagocytosis and thus preventing wider damage to the affected axons and dendrites. While seeding of new plaques seems to continue throughout the development of plaque pathology, it is only once large plaques are present that these latter changes occur. Moreover, the lack of cognitive deficits is similar to the human situation prior to the build-up of neurofibrillary tangles and neurodegeneration and thus suggests that TASTPM represent a good model of the prodromal phase of the disease. Thus, these phenotypes are likely to represent the early stages in individuals who will go on to develop Alzheimer's disease.

Data sharing

The datasets used and/or analysed during the current study are available from the corresponding authors on reasonable request.

Funding

GlaxoSmithKline (FAE); BBSRC Case studentship with GlaxoSmithKline to PH (FAE); UCL International Studentship to WL (FAE); ARUK and UCL ARUK Network (FAE, DMC, DAS); MRC grant MR/J011851/1 (FAE); BBSRC grant BB/R009872/1 for LM (FC).

A material transfer agreement between GlaxoSmithKline and UCL for use of the TASTPM mice and agreement for the types of experiment was in place prior to experimental design as well as agreement to include GlaxoSmithKline authors. GlaxoSmithKline were not involved directly with the design of the experiments. GlaxoSmithKline (JCR) have read and approved the submitted form of the manuscript. No further input was received from funding sources.

Conflicts of interest

FAE reports non-financial support from GlaxoSmithKline and grants from GSK, Medical Research Council UK, and Alzheimer's Research UK during the conduct of the study.

PH reports grants from BBSRC, during the conduct of the study.

JCR reports other from GlaxoSmithKline, outside the submitted work.

No further conflicts of interests declared.

Authors' contributions

EM performed the histological staining and counting of microglia and provided feedback on draft manuscript. TAB carried out behavioural experiments and analysis and comments on draft manuscript. WL performed the LTP experiments at 12 and 18 months of age and comments

on draft manuscript. TH performed LTP and behavioural experiments at 4 months of age. PH carried out the chemical LTP experiments and comments on draft manuscript. OTJ performed patch clamp experiments for IPSCs at 4 months of age. KY performed the LTP experiments at 24 months. LM provided training and supervision of all behavioural experiments. FM performed LTP experiments at 2 and 4 months of age. MANS performed behavioural experiments at 4 and 8 months of age. GB carried out histological staining and quantification of plaques. RW performed the microglial histology and counting for the TPM mice. JCR developed the mouse model and comments on the draft manuscript. FC designed and supervised the behavioural experiments and provided comments on the draft manuscript. DAS supervised the histological experiments and commented on draft manuscript. DMC supervised all experiments, performed electrophysiological recordings, wrote first draft of the manuscript, performed all statistical analyses, prepared figures, edited and finalised manuscript. FAE obtained funding, designed experiments, edited and finalised manuscript. All authors read and approved the final manuscript.

Acknowledgements

The authors would like to thank Rivka Steinberg and Stuart Martin for providing genotyping services; Ken Smith, Roshni Desai and Tammarny Lashley for histological advice; and the Maria Fitzgerald/Steve Hunt laboratories for use of equipment.

References

- [1] Cuyvers E, Sleegers K. Genetic variations underlying Alzheimer's disease: evidence from genome-wide association studies and beyond. *Lancet Neurol* 2016;15: 857–68. [https://doi.org/10.1016/S1474-4422\(16\)00127-7](https://doi.org/10.1016/S1474-4422(16)00127-7).
- [2] Hardy J, Allsop D. Amyloid deposition as the central event in the aetiology of Alzheimer's disease. *Trends Pharmacol Sci* 1991;12:383–8. [https://doi.org/10.1016/0165-6147\(91\)90609-V](https://doi.org/10.1016/0165-6147(91)90609-V).
- [3] Blennow K, Mattsson N, Scholl M, Hansson O, Zetterberg H. Amyloid biomarkers in Alzheimer's disease. *Trends Pharmacol Sci* 2015;36:297–309. <https://doi.org/10.1016/j.tips.2015.03.002>.
- [4] Lewczuk P, Matzen A, Blennow K, et al. Cerebrospinal Fluid Abeta42/40 corresponds better than Abeta42 to amyloid PET in Alzheimer's disease. *J Alzheimers Dis* 2017; 55:813–22. <https://doi.org/10.3233/JAD-160722>.
- [5] Abramov E, Dolev I, Fogel H, Ciccotosto GD, Ruff E, Slutsky I. Amyloid-beta as a positive endogenous regulator of release probability at hippocampal synapses. *Nat Neurosci* 2009;12:1567–76. <https://doi.org/10.1038/nn.2433>.
- [6] Dolev I, Fogel H, Milshstein H, et al. Spike bursts increase amyloid-beta 40/42 ratio by inducing a presenilin-1 conformational change. *Nat Neurosci* 2013;16:587–95. <https://doi.org/10.1038/nn.3376>.
- [7] Iaccarino HF, Singer AC, Martorell AJ, et al. Gamma frequency entrainment attenuates amyloid load and modifies microglia. *Nature* 2016;540:230–5. <https://doi.org/10.1038/nature20587>.
- [8] Verret L, Mann EO, Hang GB, et al. Inhibitory interneuron deficit links altered network activity and cognitive dysfunction in Alzheimer model. *Cell* 2012;149: 708–21. <https://doi.org/10.1016/j.cell.2012.02.046>.
- [9] Selkoe DJ, Hardy J. The amyloid hypothesis of Alzheimer's disease at 25 years. *EMBO Mol Med* 2016;8:595–608. <https://doi.org/10.15252/emmm.201606210>.
- [10] Matarin M, Salih DA, Yasvoina M, et al. A genome-wide gene-expression analysis and database in transgenic mice during development of amyloid or tau pathology. *Cell Rep* 2015;10:633–44. <https://doi.org/10.1016/j.celrep.2014.12.041>.
- [11] Howlett DR, Bowler K, Soden PE, et al. Abeta deposition and related pathology in an APP x PS1 transgenic mouse model of Alzheimer's disease. *Histol Histopathol* 2008; 23:67–76. <https://doi.org/10.14670/HH-23.67>.
- [12] He Z, Guo JL, McBride JD, et al. Amyloid-beta plaques enhance Alzheimer's brain tau-seeded pathologies by facilitating neuritic plaque tau aggregation. *Nat Med* 2018;24: 29–38. <https://doi.org/10.1038/nm.4443>.
- [13] Rattray I, Scullion GA, Souby A, Kendall DA, Pardon MC. The occurrence of a deficit in contextual fear extinction in adult amyloid-over-expressing TASTPM mice is independent of the strength of conditioning but can be prevented by mild novel cage stress. *Behav Brain Res* 2009;200:83–90. <https://doi.org/10.1016/j.bbr.2008.12.037>.
- [14] Rattray I, Pitiot A, Lowe J, et al. Novel cage stress alters remote contextual fear extinction and regional T2 magnetic resonance relaxation times in TASTPM mice over-expressing amyloid. *J Alzheimers Dis* 2010;20:1049–68. <https://doi.org/10.3233/JAD-2010-091354>.
- [15] Howlett DR, Richardson JC, Austin A, et al. Cognitive correlates of Abeta deposition in male and female mice bearing amyloid precursor protein and presenilin-1 mutant transgenes. *Brain Res* 2004;1017:130–6. <https://doi.org/10.1016/j.brainres.2004.05.029>.
- [16] Cummings DM, Liu W, Portelius E, et al. First effects of rising amyloid-beta in transgenic mouse brain: synaptic transmission and gene expression. *Brain* 2015;138: 1992–2004. <https://doi.org/10.1093/brain/aww127>.

- [17] Richardson JC, Kendal CE, Anderson R, et al. Ultrastructural and behavioural changes precede amyloid deposition in a transgenic model of Alzheimer's disease. *Neuroscience* 2003;122:213–28. [https://doi.org/10.1016/S0306-4522\(03\)00389-0](https://doi.org/10.1016/S0306-4522(03)00389-0).
- [18] Cacucci F, Yi M, Wills TJ, Chapman P, O'Keefe J. Place cell firing correlates with memory deficits and amyloid plaque burden in Tg2576 Alzheimer mouse model. *Proc Natl Acad Sci U S A* 2008;105:7863–8. <https://doi.org/10.1073/pnas.0802908105>.
- [19] Packard MG, Intorini-Collison I, McGaugh JL. Stria terminalis lesions attenuate memory enhancement produced by intracaudate nucleus injections of oxotremorine. *Neurobiol Learn Mem* 1996;65:278–82. <https://doi.org/10.1006/nlme.1996.0033>.
- [20] Bliss TVP, Collingridge GL, Morris RG. Synaptic plasticity in health and disease: introduction and overview. *Philos Trans R Soc Lond B Biol Sci* 2014;369(20130129). <https://doi.org/10.1098/rstb.2013.0129>.
- [21] Nahum-Levy R, Lipinski D, Shavit S, Benveniste M. Desensitization of NMDA receptor channels is modulated by glutamate agonists. *Biophys J* 2001;80:2152–66. [https://doi.org/10.1016/S0006-3495\(01\)67188-7](https://doi.org/10.1016/S0006-3495(01)67188-7).
- [22] Condello C, Yuan P, Schain A, Grutzendler J. Microglia constitute a barrier that prevents neurotoxic protofibrillar Aβ42 hotspots around plaques. *Nat Commun* 2015;6:6176. <https://doi.org/10.1038/ncomms7176>.
- [23] Hong S, Dissing-Olesen L, Stevens B. New insights on the role of microglia in synaptic pruning in health and disease. *Curr Opin Neurobiol* 2016;36:128–34. <https://doi.org/10.1016/j.conb.2015.12.004>.
- [24] Guerreiro R, Wojtas A, Bras J, et al. TREM2 variants in Alzheimer's disease. *N Engl J Med* 2013;368:117–27. <https://doi.org/10.1056/NEJMoa1211851>.
- [25] Jonsson T, Stefansson H, Steinberg S, et al. Variant of TREM2 associated with the risk of Alzheimer's disease. *N Engl J Med* 2013;368:107–16. <https://doi.org/10.1056/NEJMoa1211103>.
- [26] Zheng C, Zhou XW, Wang JZ. The dual roles of cytokines in Alzheimer's disease: update on interleukins, TNF-α, TGF-β and IFN-γ. *Transl Neurodegener* 2016;5:7. <https://doi.org/10.1186/s40035-016-0054-4>.
- [27] Dagher NN, Najafi AR, Kayala KM, et al. Colony-stimulating factor 1 receptor inhibition prevents microglial plaque association and improves cognition in 3xTg-AD mice. *J Neuroinflammation* 2015;12:139. <https://doi.org/10.1186/s12974-015-0366-9>.
- [28] Spangenberg EE, Lee RJ, Najafi AR, et al. Eliminating microglia in Alzheimer's mice prevents neuronal loss without modulating amyloid-β pathology. *Brain* 2016;139:1265–81. <https://doi.org/10.1093/brain/aww016>.
- [29] Olmos-Alonso A, Schettler ST, Sri S, et al. Pharmacological targeting of CSF1R inhibits microglial proliferation and prevents the progression of Alzheimer's-like pathology. *Brain* 2016;139:891–907. <https://doi.org/10.1093/brain/awv379>.
- [30] Sosna J, Philipp S, Albay 3rd R, et al. Early long-term administration of the CSF1R inhibitor PLX3397 ablates microglia and reduces accumulation of intraneuronal amyloid, neuritic plaque deposition and pre-fibrillar oligomers in 5XFAD mouse model of Alzheimer's disease. *Mol Neurodegener* 2018;13:11. <https://doi.org/10.1186/s13024-018-0244-x>.
- [31] Hong S, Beja-Glasser VF, Nfonoyim BM, et al. Complement and microglia mediate early synapse loss in Alzheimer mouse models. *Science* 2016;352:712–6. <https://doi.org/10.1126/science.aad8373>.
- [32] Spiess TL, Meyer-Luehmann M, Stern EA, et al. Dendritic spine abnormalities in amyloid precursor protein transgenic mice demonstrated by gene transfer and intravital multiphoton microscopy. *J Neurosci* 2005;25:7278–87. <https://doi.org/10.1523/JNEUROSCI.1879-05.2005>.
- [33] Kirkwood CM, Ciuchta J, Ikonovic MD, et al. Dendritic spine density, morphology, and fibrillar actin content surrounding amyloid-β plaques in a mouse model of amyloid-β deposition. *J Neuropathol Exp Neurol* 2013;72:791–800. <https://doi.org/10.1097/NEN.0b013e31829ecc89>.
- [34] Edwards FA. Anatomy and electrophysiology of fast central synapses lead to a structural model for long-term potentiation. *Physiol Rev* 1995;75:759–87. <https://doi.org/10.1152/physrev.1995.75.4.759>.
- [35] Busche MA, Eichhoff G, Adelsberger H, et al. Clusters of hyperactive neurons near amyloid plaques in a mouse model of Alzheimer's disease. *Science* 2008;321:1686–9. <https://doi.org/10.1126/science.1162844>.
- [36] Zhang Y, Li P, Feng J, Wu M. Dysfunction of NMDA receptors in Alzheimer's disease. *Neurosci* 2016;37:1039–47. <https://doi.org/10.1007/s10072-016-2546-5>.
- [37] Kamenetz F, Tomita T, Hsieh H, et al. APP processing and synaptic function. *Neuron* 2003;37:925–37. [https://doi.org/10.1016/S0896-6273\(03\)00124-7](https://doi.org/10.1016/S0896-6273(03)00124-7).
- [38] Cirrito JR, Kang JE, Lee J, et al. Endocytosis is required for synaptic activity-dependent release of amyloid-β in vivo. *Neuron* 2008;58:42–51. <https://doi.org/10.1016/j.neuron.2008.02.003>.
- [39] Cirrito JR, Yamada KA, Finn MB, et al. Synaptic activity regulates interstitial fluid amyloid-β levels in vivo. *Neuron* 2005;48:913–22. <https://doi.org/10.1016/j.neuron.2005.10.028>.
- [40] Parent A, Linden DJ, Sisodia SS, Borchelt DR. Synaptic transmission and hippocampal long-term potentiation in transgenic mice expressing FAD-linked presenilin 1. *Neurobiol Dis* 1999;6:56–62. <https://doi.org/10.1006/nbdi.1998.0207>.
- [41] Dewachter I, Ris L, Croes S, et al. Modulation of synaptic plasticity and Tau phosphorylation by wild-type and mutant presenilin1. *Neurobiol Aging* 2008;29:639–52. <https://doi.org/10.1016/j.neurobiolaging.2006.11.019>.
- [42] Auffret A, Gautheron V, Repici M, et al. Age-dependent impairment of spine morphology and synaptic plasticity in hippocampal CA1 neurons of a presenilin 1 transgenic mouse model of Alzheimer's disease. *J Neurosci* 2009;29:10144–52. <https://doi.org/10.1523/JNEUROSCI.1856-09.2009>.
- [43] Jankowsky JL, Patterson PH. Cytokine and growth factor involvement in long-term potentiation. *Mol Cell Neurosci* 1999;14:273–86. <https://doi.org/10.1006/mcne.1999.0792>.
- [44] Donzis EJ, Tronson NC. Modulation of learning and memory by cytokines: signaling mechanisms and long term consequences. *Neurobiol Learn Mem* 2014;115:68–77. <https://doi.org/10.1016/j.nlm.2014.08.008>.
- [45] Pugh PL, Richardson JC, Bate ST, Upton N, Sunter D. Non-cognitive behaviours in an APP/PS1 transgenic model of Alzheimer's disease. *Behav Brain Res* 2007;178:18–28. <https://doi.org/10.1016/j.bbr.2006.11.044>.
- [46] Pardon MC, Sarmad S, Rattray I, et al. Repeated novel cage exposure-induced improvement of early Alzheimer's-like cognitive and amyloid changes in TASTPM mice is unrelated to changes in brain endocannabinoids levels. *Neurobiol Aging* 2009;30:1099–113. <https://doi.org/10.1016/j.neurobiolaging.2007.10.002>.
- [47] Foley AM, Ammar ZM, Lee RH, Mitchell CS. Systematic review of the relationship between amyloid-β levels and measures of transgenic mouse cognitive deficit in Alzheimer's disease. *J Alzheimers Dis* 2015;44:787–95. <https://doi.org/10.3233/JAD-142208>.
- [48] Kobayashi DT, Chen KS. Behavioral phenotypes of amyloid-based genetically modified mouse models of Alzheimer's disease. *Genes Brain Behav* 2005;4:173–96. <https://doi.org/10.1111/j.1601-183X.2005.00124.x>.
- [49] Ridha BH, Barnes J, Bartlett JW, et al. Tracking atrophy progression in familial Alzheimer's disease: a serial MRI study. *Lancet Neurol* 2006;5:828–34. [https://doi.org/10.1016/S1474-4422\(06\)70550-6](https://doi.org/10.1016/S1474-4422(06)70550-6).
- [50] Brier MR, Gordon B, Friedrichsen K, et al. Tau and Aβ imaging, CSF measures, and cognition in Alzheimer's disease. *Sci Transl Med* 2016;8:338ra66. <https://doi.org/10.1126/scitranslmed.aaf2362>.
- [51] Joel Z, Izquierdo P, Liu W, et al. A TauP301L mouse model of dementia: development of pathology, synaptic transmission, microglial response and cognition throughout life. *bioRxiv* 2018;420398. <https://doi.org/10.1101/420398>.