

## **Obstructive Sleep Apnea Severity Affects Amyloid Burden in Cognitively Normal Elderly: A Longitudinal Study.**

Ram A Sharma<sup>1\*</sup>, Andrew W Varga<sup>2\*</sup>, Omonigho M Bubu<sup>3</sup>, Elizabeth Pirraglia<sup>1</sup>, Korey Kam<sup>2</sup>, Ankit Parekh<sup>4</sup>, Margaret Wohlleber<sup>1</sup>, Margo D Miller<sup>1</sup>, Clifton Lewis<sup>1</sup>, Samuel Tweardy<sup>1</sup>, Maja Buj<sup>1</sup>, Po L Yau<sup>1</sup>, Reem Sadda<sup>5</sup>, Lisa Mosconi<sup>1</sup>, Yi Li<sup>1</sup>, Tracy Butler<sup>1</sup>, Lidia Glodzik<sup>1</sup>, Els Fieremans<sup>6</sup>, James S Babb<sup>6</sup>, Kaj Blennow<sup>7,8</sup>, Henrik Zetterberg<sup>7,8,9</sup>, Shou E Lu,<sup>10</sup> Sandra G Badia<sup>11</sup>, Sergio Romero<sup>11</sup>, Ivana Rosenzweig<sup>12</sup>, Nadia Gosselin<sup>13</sup>, Girardin Jean-Louis<sup>14</sup>, David M Rapoport<sup>2</sup>, Mony J de Leon<sup>1</sup>, Indu Ayappa I<sup>2</sup>, Ricardo S Osorio<sup>1</sup>.

\* Equal contribution of authors

1. Center for Brain Health, Department of Psychiatry, NYU Langone Medical Center, New York, NY.
2. Division of Pulmonary, Critical Care and Sleep Medicine at the Icahn School of Medicine at Mount Sinai, New York, NY.
3. Department of Epidemiology and Biostatistics, College of Public Health, University of South Florida, Tampa, FL.
4. College of Engineering, The University of Iowa, Iowa City, IA.
5. Harlem Hospital – Columbia University Medical Center, New York, NY.
6. Center for Biomedical Imaging, Department of Radiology, New York University School of Medicine, New York, NY.
7. Institute of Neuroscience and Psychiatry, Department of Psychiatry and Neurochemistry, the Sahlgrenska Academy at the University of Gothenburg, Mölndal, Sweden.
8. Clinical Neurochemistry Laboratory, Sahlgrenska University Hospital, Mölndal, Sweden
9. Department of Molecular Neuroscience, UCL Institute of Neurology, Queen Square, London, United Kingdom.
10. Department of Biostatistics, Rutgers School of Public Health, NJ.
11. Sleep Unit, Respiratory Department, Hospital de la Santa Creu i Sant Pau and Institute for Biomedical Research Sant Pau (IIB Sant Pau), CIBERSAM and Department of Clinical Psychology and Psychobiology University of Barcelona, Spain.
12. Sleep and Brain Plasticity Centre, Department of Neuroimaging, Institute of Psychiatry, Psychology and Neuroscience, King's College London, and Sleep Disorders Centre, Guy's and St Thomas' Hospital, GSTT NHS Trust, United Kingdom.
13. Center for Advanced Research in Sleep Medicine (CARSM), Hospital du Sacre-Coeur de Montreal, Montreal, Quebec, Canada and Universite de Montreal, Department of Psychology, Montreal, Quebec, Canada.
14. Center for Healthful Behavior Change (CHBC), Division of Health and Behavior, Department of Population Health, New York University Medical Center, New York, NY 10016, USA.

### **Contact Information of corresponding author:**

Dr. Ricardo Osorio  
145 East 32<sup>nd</sup> Street, 5<sup>th</sup> Floor  
New York, NY 10016-6055  
Telephone: (212) 263-3258  
Facsimile: (212) 263-3270  
e-mail: [ricardo.osorio@nyumc.org](mailto:ricardo.osorio@nyumc.org)

**Manuscript word count:** 3859

## **ABSTRACT:**

**Rationale:** Recent evidence suggests that Obstructive Sleep Apnea (OSA) may be a risk factor for developing Mild Cognitive Impairment and Alzheimer's Disease. However, how sleep apnea affects longitudinal risk for AD is less well understood.

**Objective:** To test the hypothesis that there is an association between severity of OSA and longitudinal increase in amyloid burden in cognitively normal elderly.

**Methods:** Data was derived from a 2-year prospective longitudinal study that sampled community-dwelling healthy cognitively normal elderly. Subjects were healthy volunteers between the ages of 55 to 90, were non-depressed and had a consensus clinical diagnosis of cognitively normal. CSF Amyloid beta was measured using ELISA. Subjects received Pittsburgh compound B Positron Emission Tomography scans following standardized procedures. Monitoring of OSA was completed using a home sleep recording device.

**Measurements and Main Results:** We found that severity of OSA indices (lnAHIall [ $F_{1,88}=4.26$ ,  $p<.05$ ] and lnAHI4% [ $F_{1,87}=4.36$ ,  $p<.05$ ]) were associated with annual rate of change of CSF A $\beta$ 42 using linear regression after adjusting for age, sex, BMI and ApoE4 status. LnAHIall and lnAHI4 were not associated with increases in AD<sub>PIB</sub>-mask most likely due to the small sample size although there was a trend for lnAHIall ( $F_{1,28}=2.96$ ,  $p=.09$  and  $F_{1,28}=2.32$ , n.s. respectively).

**Conclusion:** In a sample of cognitively normal elderly, OSA was associated with markers of increased amyloid burden over the 2 year follow-up. Sleep fragmentation and/or intermittent hypoxia from OSA are likely candidate mechanisms. If confirmed, clinical interventions for OSA may assist in preventing the amyloid burden accumulation in cognitively normal elderly.

**Word count for the abstract: 250**

### **At a Glance Commentary:**

**Scientific knowledge on the subject:** Recent literature in both mice and humans suggests that disturbed sleep leads to higher levels of brain soluble beta amyloid, which aggregates to forms senile plaques, a hallmark of Alzheimer's Disease. This pathological process might be present prior to cognitive decline to AD, indicating that disturbed sleep can be both a consequence and a risk factor for Alzheimer's Disease.

**What this study adds to the field:** This is the first longitudinal study in humans that shows that obstructive sleep apnea, common in elderly, can be a risk factor for developing Alzheimer's disease prior to any cognitive impairment.

## **INTRODUCTION:**

Obstructive Sleep Apnea (OSA) and Alzheimer's disease (AD) are both chronic disease conditions that are highly prevalent, cause significant morbidity and mortality to those afflicted,<sup>1,2</sup> and have an enormous socio-economic impact. OSA is typified by recurrent partial or complete obstructions of the upper airway during sleep leading to intermittent hypoxia and/or sleep fragmentation. OSA is associated with hypertension, cardiovascular risk, cognitive decline<sup>3</sup> and multiple inflammatory and metabolic effects<sup>4,5</sup> (for a review see<sup>6</sup>). OSA affects up to 30-80% of the elderly<sup>7,8</sup> depending on how OSA is defined. The clinical relevance of these high rates in the elderly is unclear, as some studies demonstrate increased rates of mortality, while others suggest that sleepiness, cognitive impairment, hypertension and mortality associated with OSA decline with age.<sup>9</sup> However, in a recent study of older women where nocturnal polysomnography was collected at baseline and cognition was evaluated 5 years later, OSA patients were more likely to develop mild cognitive impairment (MCI) or dementia at follow-up.<sup>3</sup> In a similar study using the Alzheimer's Disease Neuroimaging Initiative (ADNI) database, we found that reported OSA patients had an earlier age of cognitive decline to MCI and to AD than non-OSA controls.<sup>10</sup> Furthermore, in a meta-analysis of cross-sectional studies, patients with AD were five times more likely to present with OSA than cognitively unimpaired individuals of similar age.<sup>11</sup> While OSA could be a consequence of events in the progression of AD pathology, alternatively, OSA may precipitate AD pathogenesis. The latter would present an exciting opportunity to slow AD pathology with sleep interventions.

The link between severity of OSA and risk for AD could be mediated by an increase in amyloid deposition as a small number of cross-sectional studies suggest. Greater A $\beta$  burden using amyloid-PET, globally and regionally in the precuneus has been associated with OSA severity among MCI patients.<sup>12</sup> We also demonstrated a trend toward decreased cerebrospinal fluid (CSF) amyloid beta 42 (A $\beta$ 42) levels in cognitively normal ApoE4+ carriers with OSA,<sup>13</sup> suggesting that OSA might contribute to amyloid deposition and accelerate cognitive decline in those at risk for AD. However, so far it has been challenging to verify causality for these associations as OSA and AD may share common risk factors<sup>14,15</sup> as well as neurodegenerative consequences<sup>15</sup> (e.g. vascular damage, hippocampal atrophy).

Based on the existing literature, the aims of this study were to use the NYU Center for Brain Health (CBH) cohort of cognitively normal healthy elderly to investigate the cross-sectional and longitudinal associations between OSA severity and changes in CSF and PET biomarkers of AD.

## **METHODS:**

### **NYU Cohort:**

The NYU cohort consists of community-dwelling healthy cognitively normal volunteers and was derived from 3 NIH/NIA and 1 Alzheimer's Association supported studies. All subjects received medical, neurological, and psychiatric evaluations, clinical labs, home monitoring for OSA, structural magnetic resonance imaging (MRI) scans, a lumbar puncture (LP) and/or a Pittsburgh compound B (PiB) PET scan. As such, sleep complaints were not part of the inclusion or exclusion criteria of these protocols nor were subjects referred to the studies from any sleep disorders clinic. All subjects were administered a standard neuropsychological test battery which has published norm values.<sup>16</sup>

### **Subjects:**

Subjects were between the ages of 55 to 90, English speaking, with a minimum of 12 years of education, had Mini-Mental State Exam (MMSE)<sup>17</sup> scores between 25–30 (inclusive), a Clinical Dementia Rating (CDR)<sup>18</sup> of 0, were non-depressed and had a consensus clinical diagnosis of cognitively normal. Due to known CSF batch variations, only values that were either batch

corrected or from the same assay date were included. Individuals with medical conditions, continuous positive airway pressure (CPAP) users or history of significant conditions that may affect brain structure or function and MRI evidence of intracranial mass or infarcts were excluded. Written informed consent was obtained from all participants.

### **Sleep Evaluation:**

The sleep evaluation included a sleep interview, detailed snoring history, and self-administration of the Epworth Sleepiness Scale (ESS).<sup>19</sup> Home monitoring of OSA was completed using either an “ARES” Unicorder (*Watermark*)<sup>20</sup> or an “Embletta MPR” (*Natus Medical Inc.*)<sup>21</sup> system during a 2-night period. For most subjects cross-sectional home sleep evaluations were completed prior to the baseline lumbar puncture (LP) and amyloid PET scan, however in a few subjects (n=21) sleep evaluations were done after the baseline LP and amyloid PET scan. In some of these cases the sleep evaluation was closer in time to the follow-up visits. The variables used in this study were: (1) the apnea/hypopnea index with 4% desaturation (AHI4%), defined as the sum of all apneas (>90% reduction in airflow for >10 sec) and all hypopneas (>30% reduction in airflow for 10 sec) associated with >4% oxygen (O<sub>2</sub>) desaturation divided by the total time where both flow and oximetry signals were valid; (2) the AHIall, which was defined as the sum of all apneas and all hypopneas identified plus events with visible reduction in airflow amplitude and presence of inspiratory flattening ending in breaths with normalization of airflow as a surrogate for arousal,<sup>22</sup> divided by the total time where there was a valid flow signal irrespective of O<sub>2</sub> saturation; and, (3) mean saturation of oxygen (O<sub>2</sub>Sat) during the night. Although the systems used different techniques of oximetry measurement, we have previously shown that OSA indices between these two devices are highly correlated.<sup>20</sup> Both systems and AHI indices have been compared with the recommended definitions of AHI.<sup>20</sup> Reported total sleep time (TST) duration was assessed using one question: “During the past month, how many hours of sleep did you usually get each night?”

### **Lumbar Puncture, CSF Collection and Assays:**

The procedures for the NYU lumbar puncture (LP) are published<sup>23;24</sup> CSF amyloid beta (A $\beta$ <sub>42</sub>), total-tau (T-tau) and tau phosphorylated at threonine 181 (P-tau) concentrations were measured using sandwich enzyme-linked immunosorbent assays (*INNOTEST, Belgium*). All assays were conducted at Sahlgrenska University Hospital. Batch wise rescaling of CSF A $\beta$ <sub>42</sub> was performed using linear regression with a reference batch. Before rescaling A $\beta$ <sub>42</sub>, the coefficient of variation (CV) was 20%, and was reduced to 10% after rescaling. P-tau or T-Tau were not rescaled because the CV between batches was already relatively low (9%). CSF assays were done blind to clinical or sleep data.

### **PiB scans:**

All subjects received PiB PET scans following standardized published procedures.<sup>25-28</sup> Parametric standardized uptake value ratio (SUVR) images were generated by normalizing PiB uptake by cerebellar grey matter uptake.<sup>29</sup> PiB SUVR images were processed using automated regions-of-interest (ROI).<sup>27</sup>

These ROIs were used to sample AD-vulnerable brain regions from the PiB SUVR images, including: hippocampus (Hip), inferior parietal lobule (IPL), lateral temporal lobe (LTL), medial frontal gyrus (MFG), posterior cingulate cortex/precuneus (PCC), prefrontal cortex (PFC), occipital cortex (OCC), and thalamus (Thal). The cortical PiB meta-ROI retention mask (AD<sub>PiB</sub>-mask) was created by combining amyloid-vulnerable IPL, LTL, MFG, PCC, and PFC regions.<sup>30</sup>

### **Statistical analyses:**

Statistical analyses were performed using SPSS (version 23, SPSS, Inc., Chicago, IL). Baseline measures between OSA groups (normal, mild and moderate-severe) were examined based on AHI4% cutoff values (<5, 5-14.99 and >15 respectively) using ANOVA with *post hoc* Tukey tests for continuous variables and chi-square test for categorical variables. Regression-based z-scores corrected for age, sex, race and education, derived from our normative sample,<sup>16</sup> were used for OSA group comparisons of cognitive variables (Logic 2, Animal Fluency [AF], Vegetable Fluency [VF]), Boston Naming Test [BNT], Digit Symbol Substitution Test [DSST], Trails Making Test-A time [TMT-A] and Trails Making Test-B time [TMT-B]); as well as for correlation analyses between annual rate of change of CSF A $\beta$ 42 and annual change in cognitive z-scores. For comparison between OSA severity groups, univariate analysis was used after adjusting for age, sex, BMI, ApoE4 and time interval between procedures. To test whether normal elderly subjects with OSA showed positive PET/CSF biomarker evidence, first we calculated the correlation coefficients between AD biomarkers and OSA indices at cross-section. Direct and partial correlations were computed, the latter adjusting for relevant cofactors that proved to be significantly different between OSA groups such as age, sex, BMI and ApoE4 status. A similar approach was used for longitudinal analyses using delta change in amyloid biomarkers. To calculate the annual rate of change of CSF A $\beta$ 42 or AD<sub>PIB</sub>-mask for each subject, we used the change in outcome from baseline to follow-up divided by the elapsed time from baseline to follow-up. Second, we used a hierarchical linear regression, with annual rate of change of CSF A $\beta$ 42 or AD<sub>PIB</sub>-mask as dependent variables and OSA indices as independent, adjusting first for age, sex, BMI and ApoE4 status. To control for the type of sleep recording device, we included it as a covariate in the model. Due to the skewness and heavy tails in the distributions of AD<sub>PIB</sub>-mask non-parametric correlations were performed for comparisons between AD<sub>PIB</sub>-mask and OSA indices. Logarithm transformations were applied to continuous measures of A $\beta$ 42, P-Tau, T-Tau, delta AD<sub>PIB</sub>-mask and AHI indices due to their right-skewed distributions. All statistical analyses were tested for violations of the model assumptions and any conflicts and resolutions are reported. Statistical significance was set at  $p < .05$  using two-sided tests.

## **RESULTS:**

### **Baseline demographics and sleep characteristics:**

Baseline demographic and raw values of sleep characteristics are summarized in Table 1. Among the 208 participants, 97 were free of OSA (AHI4%<5) and considered healthy controls, 76 had mild OSA (AHI4% 5-14.99), and 35 had moderate to severe OSA (AHI4%>15). Within the moderate to severe group only 14 subjects had an AHI4%>30 and 6 subjects had an AHI4%>45. OSA patients were more commonly male and older [ $X^2$  (2,n=208)=4.26,  $p=.11$ ,  $F_{2,205}=2.36$ ,  $p=0.09$  respectively] and had significantly higher BMI than healthy controls ( $F_{2,206}=9.67$ ,  $p<.01$ ). However it was not an obese group (mean BMI of  $26.68 \pm 5.35$  and only 14 subjects of the 208 with a BMI>35). Moreover, using repeated measures ANOVA, BMI within subjects did not change significantly at follow-up ( $F_{1,105}=.68$ ,  $p=.41$ ). We did not find significant differences across healthy controls and OSA groups in years of education, hypertension, diabetes, cardiovascular or thyroid disease or ApoE4 status. Excessive daytime somnolence (EDS) was remarkably low in the entire sample (median ESS of 5, IQR 3,8), with only 19 subjects with an ESS>10. On univariate analysis there were no significant differences between the groups regarding TST. Overall TST was  $7.03 \pm 1.12$  hrs.

### **Psychometric Assessment:**

Cross-sectional and longitudinal cognitive characteristics of all subjects are shown in Table 2. We did not find any statistically significant differences between OSA indices and cognition across healthy and OSA groups at baseline or longitudinally. To assess the relationship between

longitudinal changes in CSF A $\beta$ 42 and cognitive performance, we performed Pearson correlation analyses comparing annual rate of change of CSF A $\beta$ 42 and annual change in cognitive z-scores. No statistically significant correlations were found: Logic 2 ( $r=-.12$ ,  $p=.26$ ), AF ( $r=.15$ ,  $p=.19$ ), VF ( $r=-.09$ ,  $p=.40$ ), BNT ( $r=.006$ ,  $p=.96$ ), DSST ( $r=.16$ ,  $p=.14$ ), TMT-A ( $r=.001$ ,  $p=.99$ ) and TMT-B ( $r=-.08$ ,  $p=.46$ ).

### **CSF and PET Assessment:**

From the 208 participants, 179 subjects performed a lumbar puncture (LP) at baseline. A second LP was obtained at follow-up in 104 subjects 2.42 $\pm$ 0.88 years later. 86 subjects performed PiB scans at baseline. A second PiB scan evaluation was obtained at follow-up in 34 subjects 2.50 $\pm$ 0.39 years later. 57 participants performed both the LP and the PET scans at baseline. 25 participants performed the LP and PET scans at both baseline and follow-up. We will refer to participants with both baseline and follow-up biomarker data available as “*completers*”, whereas subjects with only baseline biomarkers data will be referred to as “*non-completers*”. There were no differences between *completers* and *non-completers*, in terms of (age [ $t=-.27$ ,  $p=.78$ ], sex [ $X^2=.002$ ,  $p=.96$ ], BMI [ $t=.40$ ,  $p=.69$ ], MMSE [ $t=.00$ ,  $p=.99$ ], years of education [ $t=.17$ ,  $p=.86$ ], ApoE4 status [ $X^2=.93$ ,  $p=.33$ ], TST [ $t=1.18$ ,  $p=.24$ ], AHIall [ $t=.82$ ,  $p=.41$ ] or AHI 4% [ $t=.88$ ,  $p=.37$ ]). Summary statistics of baseline, and annual changes of AD biomarkers are shown in Table 3. At cross-section and longitudinally, we did not find any significant differences among the 3 OSA severity groups for CSF P-Tau or T-Tau. Similarly, no cross-sectional or longitudinal effects were found for CSF A $\beta$ 42 across OSA severity groups using univariate analysis. No significant correlation between CSF A $\beta$ 42 and AHI indices were observed at cross-section.

However, significant correlations were observed between longitudinal change in CSF A $\beta$ 42 levels and AHIall/AHI4 ( $\rho=-0.27$ ,  $p<.05$ ,  $\rho=-0.24$ ,  $p<.05$  respectively) after controlling for age, sex, BMI and ApoE4. Significant associations were also observed between annual rate of change of CSF A $\beta$ 42 and AHI indices at baseline using hierarchical linear regression model (shown in table 4) including annual rate of change of CSF A $\beta$ 42 as dependent and AHI indices as independent variables after accounting for age, sex, BMI and ApoE4. The effect of the type of sleep recording device and TST was not significant, thus we excluded them from the final model. LnAHIall and LnAHI4 were associated with decreases in CSF A $\beta$ 42 levels ( $F_{1,88}=4.26$ ,  $p<.05$  and  $F_{1,87}=4.36$ ,  $p<.05$  respectively). Figure 1 shows the relationship between delta change in CSF A $\beta$ 42 and the AHI indices at baseline.

Similarly, on univariate analysis no difference in AD<sub>PiB</sub>-mask was observed between OSA severity groups, and no significant correlation between AD<sub>PiB</sub>-mask and AHI indices were observed at cross-section. However, correlations were observed between longitudinal change in AD<sub>PiB</sub>-mask and AHIall, AHI4 ( $\rho=0.374$ ,  $p<.05$ ,  $\rho=0.302$ ,  $p=0.09$  respectively) after controlling for age, sex, BMI and ApoE4. Using the same hierarchical linear regression model as for CSF A $\beta$ 42, no statistically significant associations were observed between annual rate of change of AD<sub>PiB</sub>-mask and AHIs, including annual rate of change of AD<sub>PiB</sub>-mask as dependent and AHI indices at baseline as independent variables after accounting for age, sex, BMI and ApoE4. LnAHIall and LnAHI4 were not associated with increases in AD<sub>PiB</sub>-mask most likely due to the small sample size although there was a trend for LnAHIall ( $F_{1,28}=2.96$ ,  $p=.09$  and  $F_{1,28}=2.32$ , n.s. respectively). Figure 2 shows the relationship between delta change in AD<sub>PiB</sub>-mask and the AHIall index at baseline, both variables were corrected for normal distribution by log transformation.

Further, we analyzed the association between longitudinal change in CSF A $\beta$ 42 and AD<sub>PiB</sub>-mask. Using a Pearson correlation, a significant negative correlation between longitudinal change in CSF A $\beta$ 42 and AD<sub>PiB</sub>-mask was observed ( $r=-.44$ ,  $p<.05$ ).

Using an AD<sub>PiB</sub>-mask SUVR  $\geq 1.4$  to define presence of brain amyloid deposition (PiB+),<sup>31-33</sup> a secondary analysis performed only in the initial cross-sectional cases, revealed a significant difference between the slopes of PiB+ and PiB- cases (Figure 3). This was confirmed by the presence of an interaction between PiB status and lnAHI4% ( $F_{1,29}=5.54$ ,  $p<.05$ ) as well as a positive trend between AHI4% and PiB uptake in PiB+ subjects ( $\rho=0.67$ ,  $p=.07$ ). Similar findings were observed for AHIall (data not shown). Figure 3 shows the relationships between the AHI4% and PiB SUVR uptake when comparing PiB+ vs. PiB- groups.

## **DISCUSSION:**

The primary objective of this study was to determine if severity of OSA in cognitively normal elderly is associated with CSF and PET AD-biomarkers at cross-section and their longitudinal change across an approximate 2 year period. Our initial finding revealed that OSA was common and affected 53% of our cognitively normal community-dwelling cohort. Second, we demonstrated that baseline OSA severity was associated with two-year longitudinal decreases in CSF A $\beta$ <sub>42</sub>. Such changes are potentially consistent with increased brain amyloid burden, which were also observed in our cohort (*i.e.*, a negative correlation between longitudinal change in CSF A $\beta$ <sub>42</sub> and AD<sub>PiB</sub>-mask), suggesting that OSA may play a role in amyloid deposition in late-life. Moreover, the magnitude of these changes was higher than the one predicted by the presence of the ApoE4 allele alone (Table 4), which to date is considered the most important risk factor for sporadic AD. AHIall, which includes hypopneas associated with oxygen desaturation or arousals, was a better predictor of longitudinal increases in amyloid burden than AHI4%, which includes only hypopneas associated with 4% oxygen desaturation. This raises the possibility that sleep fragmentation is a more critical pathophysiological mechanism by which OSA contributes to AD risk. However, AHIall and AHI4% were highly correlated in our cohort ( $r=0.91$ ,  $p<.01$ ) and this study was unable to differentiate the individual effects of sleep fragmentation versus intermittent hypoxia.

Although OSA severity was associated with increases in brain amyloid burden, it was not predictive of cognitive deterioration based on neuropsychological performance, which is in agreement with prior studies.<sup>34;35</sup> This is not completely surprising given that the relationship between amyloid burden and cognition is probably nonlinear and dependent on additional factors such as tau pathology and microvascular changes. Low sensitivity of the neuropsychological tests used may be another factor. Sensitivity may be increased in the future by employing cognitive tasks that are known to be sleep-dependent.

Current evidence suggests that cognitive decline to AD is associated with decreases in CSF A $\beta$ <sub>42</sub> and increases in amyloid PET uptake.<sup>36</sup> However, little is known about the temporal course of CSF A $\beta$ <sub>42</sub> in the preclinical or early stages of the disease, with some recent animal and human studies showing A $\beta$ <sub>42</sub> elevations prior to A $\beta$ <sub>42</sub> reductions,<sup>37;38</sup> suggesting an intermediate stage of increased soluble A $\beta$  levels prior to amyloid deposition. Interestingly, we and others have shown that reduced slow wave activity (SWA) at cross-section, as well as one night of SWS disruption are associated with increases in CSF A $\beta$  levels, potentially as a consequence of increases in neuronal firing and/or decreases in amyloid clearance.<sup>39-42</sup> It remains to be determined how universal a period of elevated CSF A $\beta$ <sub>42</sub> in humans is observed prior to a decline, but the above mentioned studies suggest that sleep disruption might be associated with elevations of CSF A $\beta$ <sub>42</sub> which in chronic sleep disorders such as OSA could foster its aggregation and manifest as longitudinal decreases in CSF A $\beta$ <sub>42</sub> over time. Whether OSA-related sleep fragmentation increases AD-risk through disruption of SWS or other sleep stages is unknown. The ends of apneas are associated with arousals or awakenings that prevent sleep.<sup>43;44</sup> Apneas are more commonly observed in NREM1-2 and REM sleep and less commonly in SWS, which has been associated with a higher respiratory arousal threshold<sup>45;46</sup> as well as more stable breathing.<sup>47</sup> However, the temporal course of SWA has been shown to be slower in mild OSA,<sup>48</sup>

while severe OSA patients show up to a 40% rebound in SWS duration during OSA treatment with CPAP,<sup>49</sup> which suggest that changes in SWS quality may also be involved. Actigraphy-assessed arousals and circadian rhythm disruption have also been shown to increase the risk of MCI/dementia in the elderly,<sup>50</sup> indicating that the relationship between OSA-related sleep fragmentation and amyloid deposition might not be stage-specific.

Another possible mechanism by which OSA might increase amyloid deposition is through impairment in the CSF-ISF exchange promoted by the glymphatic system<sup>41</sup> resulting in decreased clearance of ISF A $\beta$ 42. This mechanism was suggested in a recent study of 31 controls and 10 severe OSA middle-age subjects where neuronally derived proteins were decreased in the OSA group when compared to controls.<sup>41</sup> The authors propose that elevations in the intrathoracic and intracranial pressure as well as a sudden pressure reversal at the end of the apnea would impede the glymphatic flow of metabolites from ISF into CSF.<sup>41</sup> Another potential pathway of impairment of CSF-ISF exchange could be cerebral edema secondary to intermittent hypoxia, as proposed recently in a study in which severity of OSA correlated with increased volume and thickness of the left lateral prefrontal cortex as well as increased thickness of the right frontal pole, the right lateral parietal lobules, and the left posterior cingulate cortex.<sup>51</sup> Similar findings were observed as brain volume reductions after six months of treatment with CPAP which also suggests the existence of brain edema in OSA.<sup>52</sup>

Finally, the effects of OSA directly increasing ISF A $\beta$ 42 burden as suggested by some intermittent hypoxia animals models,<sup>53-55</sup> or indirectly through other intermediate mechanisms such as oxidative stress, sympathetic activation, inflammation, hypercoagulability, endothelial dysfunction or metabolic dysregulation cannot be discarded although it is feasible that these and other consequences of OSA may decline with age<sup>9;56;57</sup> and might not be as relevant in the elderly as compared to middle age patients.

Among participants with initial PiB+ scans at cross-section, Figure 3 suggest that a higher severity of OSA is associated with greater brain A $\beta$  deposition, while no such association is found in participants with PiB- scans, implying that presence or absence of amyloid burden might act as a moderator in these relationships. This would be in agreement with previous studies showing increased amyloid deposition associated with higher AHI indices in MCI patients but not in cognitively normal controls at cross-section.<sup>12</sup> We did not observe this effect in the CSF sample when we compared *amyloid* positive vs. negative cases based on the NYU CBH CSF bank A $\beta$ 42 cut-offs (*i.e.* CSF A $\beta$ 42 ng/ml <500) so this finding should be interpreted with caution. It may be that the effects of OSA/hypoxia on A $\beta$  aggregation are most pronounced after significant A $\beta$  accumulation has already occurred, leading to an acceleration of further A $\beta$  deposition in a feed-forward cycle<sup>12</sup> (Figure 4) with OSA-related arousals worsening sleep quality and increasing amyloid deposition. In addition, 33/34 of the subjects that had PiB PET follow-up scans were PiB- at baseline, indicating that the observed longitudinal increases in PiB uptake were not dependent on amyloid status.

Our observations are consistent with our hypothesis that there is an association between severity of OSA-related sleep fragmentation and longitudinal increase in amyloid burden in cognitively normal elderly. This implies that existing therapies for OSA such as CPAP could delay the progression to MCI or dementia in elderly with OSA, as was suggested by our previous epidemiological studies using the ADNI database<sup>10</sup> and a recent cross-sectional study in which OSA patients showed lower CSF A $\beta$ 42 concentrations, as well as higher t-tau/A $\beta$ 42 ratio when compared to controls and OSA-CPAP patients.<sup>58</sup>



The high prevalence of mild and moderate to severe OSA in cognitively normal elderly in asymptomatic adults undergoing screening for OSA as part of a protocol on memory and normal aging adds to the importance of this possibility. Strengths of our study include that our community residing subjects were not recruited for the study based on sleep complaints, and thus should have been free of selection biases potentially affecting sleep-clinic based cohorts which typically include younger, more frequently male, obese and symptomatic (e.g. excessive daytime sleepiness, treatment resistant hypertension, etc.). We also utilized a state-of-the-art method for home-monitoring of OSA, and longitudinal standardized CSF and PET biomarkers. Potential weaknesses of the study were relative short duration and the lack of longitudinal sleep data which did not allow us to test whether preclinical-AD brain lesions increase the risk for OSA, or the lack of a longer clinical assessment to test whether amyloid deposition is followed by cognitive decline to MCI or AD. Another limitation of the study was that not all subjects had a longitudinal follow up, although both *completers* and *non-completers* were not different in terms of sociodemographics, BMI, MMSE, AHIall or AHI4%.

In summary, to our knowledge this study is the first to document that OSA is associated with longitudinal changes in amyloid burden in a sample of cognitively normal elderly. The implication of these findings is that we have identified a contribution of OSA in increasing the amyloid beta burden in cognitively normal elderly. Our data support testing whether clinical interventions aimed at OSA, such as treatment with CPAP or dental appliances, could be implemented during the early phase in which tissue damage precedes clinical symptoms and neuronal dysfunction, to mitigate the progression of cognitive impairment.

#### **ACKNOWLEDGMENTS:**

The authors are indebted to the study subjects for their patience, and for their participation in and contribution to the research. The authors acknowledge contributions to patient recruitment and

data collection by Ms. Kimberly Clay, Mr. Michael Yablon, Ms. Christine Grosso, and Ms. Gabriella Petrongolo. They also thank Dr. Pauline McHugh for their assessment of research subjects. This work was supported by grants from: NIH/NIA/NHLBI R01HL118624, R01HL111724, R21AG049348, R01AG035137, R01AG022374, R01AG13616, R01AG12101 and P30AG008051; Foundation for Research in Sleep Disorders, the American Sleep Medicine Foundation Junior Faculty Award, and the Friedman Brain Institute. Dr. Rosenzweig is supported by the Wellcome Trust [103952/Z/14/Z]. Dr. Zetterberg is supported by the Swedish Research Council (grant no: 2013-2546) and the European Research Council (grant no: 681712). Dr. Nadia Gosselin is supported by a salary award from the *Fonds pour la recherche du Québec – Santé*.

**Contribution of Authors:**

Conception and design: RSO,RAS,AWV, OMB; Analysis and interpretation: RSO, RAS, AWV, OMB, EP, AP, KK, MW, MDM, CL, ST, PLY, MB, RS, LM, YL, TB, LG, EF, JSB, KB, HZ, SEL, SG, SR, IR, NG, GJ, DMR, MJD, IA; Drafting the manuscript for important intellectual content: RSO,RAS,AWV, OMB, TB, LG, EF, JSB, KB, HZ, SEL, SG, SR, IR, NG, GJ, DMR, MJD, IA

**Tables**

Table 1: Baseline demographic and sleep characteristics of the subjects				
Characteristics	All	Normal	Mild OSA	Moderate-Severe OSA

No. of Participants (%)	208 (100)	97 (46.63)	76 (36.53)	35 (16.82)
Female sex, number (%)	129 (62)	67 (69.1)	44 (57.9)	18 (51.4)
BMI (Kg/m <sup>2</sup> ), median (IQR)	25.79 (22.7,29.87)	24.61 (22.32,28.17)*	26.89 (23.32,29.9)	29.76 (23.49,33.51)*
Age, years, mean ± SD	68.46 ± 7.38	67.56 ± 7.32	68.60 ± 7.19	70.68 ± 7.69
Education, years, median (IQR)	17 (16, 18)	16.5 (16,18)	17 (16,18)	16 (14,19)
Hypertension, number (%)	86 (41.3)	34 (35.1)	32 (42.1)	20 (57.1)
Diabetes, number (%)	12 (5.8)	4 (4.1)	4 (5.3)	4 (11.4)
Cardiovascular disease, number (%)	9 (4.3)	1 (1)	7 (9.2)	1 (2.9)
Thyroid disease, number (%)	34 (16.3)	16 (16.5)	11 (14.5)	7 (20)
APOE4 positive, number (%)	71 (34.1)	34 (35.1)	25 (32.9)	12 (34.3)
AHI4% ,median (IQR)	5 (1.55, 11.40)	1.45 (0.725,3.00)*	7.75 (5.81,10.52)*	25.00 (19.3,37.00)*
AHIall, median (IQR)	17 (10.85, 24.00)	10.40 (6.75,13.65)*	20.05 (17.05, 24.00)*	39.00 (31,57)*
Mean O2 Saturation, median (IQR)	94.19 (93.15, 95.6)	94.57 (93.78,95.6)*	94.9 (92.77,95.71)a	93.47 (92.1,94.5)* a
ESS, median (IQR)	5 (3,8)	4 (3,7)	6 (3.5,8.5)	6 (4,9)
TST, hours, median (IQR)	7 (6.5, 8)	7.48 (6.75,8)	7.00 (6.5,8)	7.50 (6.5,8)

\* ,a Statistical significant difference between the groups.

	<b>All (n=108)</b>	<b>Normal (n=50)</b>	<b>Mild OSA(n=43)</b>	<b>Moderate-Severe OSA (n=15)</b>
MMSE baseline(mean±SD)	29.31 ±0.99	29.40±0.93	29.18±0.98	29.33±1.30
MMSE follow-up	29.36±0.85	29.51±0.718	29.29±0.867	29.00±1.206
CDR baseline	0±0	0±0	0±0	0±0
CDR follow-up	0.010±0.071	0±0	0±0	0.083±0.19
Animal fluency (z-scores)	0.207±0.99	0.24±1.14	0.05±0.81	0.50±0.95
Animal fluency (delta change z-scores)	-0.23±0.87	-0.30±0.98	-0.20±0.85	-0.11±0.54
Vegetable Fluency (z-scores)	-0.042±1.1	-0.023±0.98	-0.14±1.28	0.15±0.96
Vegetable Fluency (delta change z-scores)	-0.14±0.99	-0.39±0.87	0.087±1.08	-0.02±0.98
Boston Naming Test (z-scores)	-0.20±1.03	-0.10±1.06	-0.38±0.98	-0.017±1.07
Boston Naming Test (delta change z-scores)	0.11±0.71	0.24±0.69	0.12±0.71	-0.28±0.69
Logic 1 (z-scores)	0.19±0.96	0.11±1.0	0.24±0.90	0.29±1.05
Logic 1 (delta change z-scores)	-0.007±0.86	-0.03±0.87	-0.07±0.82	0.23±0.96
Logic 2 (z-scores)	0.10±1.0	0.11±1.07	0.008±0.97	0.33±0.88
Logic 2 (delta change z-scores)	-0.012±0.75	0.042±0.8	-0.06±0.75	-0.04±0.67
Trails Making Test-A time (z-scores)	0.062±1.06	-0.14±0.88	-0.33±1.04	0.12±0.89
Trails Making Test-A time (delta change z-scores)	0.048±0.88	0.025±0.14	0.127±0.7	-0.093±1.03
Trails Making Test-B time (z-scores)	-0.17±0.96	-0.14±0.89	-0.33±1.04	0.12±0.9

Trails Making Test-B time (delta change z-scores)	-0.034±0.72	-0.007±0.65	-0.002±0.63	-0.19±0.64
DSST (z-scores)	0.2±0.95	0.2±0.83	0.14±1.03	0.36±1.11
DSST(delta change z-scores)	0.07±0.44	0.1±0.44	-.003±.45	0.18±0.37

\*Statistical significant difference between the groups. Lower scores represent worse cognitive function.

<b>Table 3: AD Biomarker characteristics</b>				
	<b>ALL (n=208)</b>	<b>Normal (n=97)</b>	<b>Mild OSA (n=76)</b>	<b>Moderate-Severe OSA (n=35)</b>
CSF A $\beta$ 42 baseline (n=179) Mean $\pm$ SD	681.31 $\pm$ 236.43	681.88 $\pm$ 243.18	690.61 $\pm$ 233.99	657.48 $\pm$ 224.79
CSF A $\beta$ 42 annual change (n=104) Median (Interquartile range)	29.40 (-9.53,71.06)	40.59 (4.23,80.80)	26.97 (-29.99,66.71)	-4.088 (-18.97,27.92)
CSF P-tau baseline (n=179) Median (Interquartile range)	41 (31,52)	42.50 (31.5,52.05)	43.55 (30,55)	40.97 (31.71,49)
CSF P-tau annual change (n=104) Mean $\pm$ SD	1.42 $\pm$ 3.93	1.35 $\pm$ 3.18	0.73 $\pm$ 4.27	3.43 $\pm$ 4.90
CSF T-tau baseline (n=179) Median (Interquartile range)	257.96 (202,360.91)	268.04 (217.65,362)	244.85 (198,382)	248.14 (174,343)
CSF T-tau annual change (n=104) Mean $\pm$ SD	8.24 $\pm$ 21.42	7.52 $\pm$ 18.86	5.85 $\pm$ 21.83	17.04 $\pm$ 27.53
AD <sub>PIB</sub> PET baseline (n=86) Median (Interquartile range)	1.05 (1.02,1.11)	1.047 (1.02,1.09)	1.061 (1.00,1.11)	1.06 (1.01,1.14)
AD <sub>PIB</sub> PET annual change (n=34) Median (Interquartile range)	0.0005 (-0.009,0.014)	-0.0020 (- 0.0095,0.0078)	-0.0022 (-0.0126,0.0224)	0.014 (0.006,0.028)

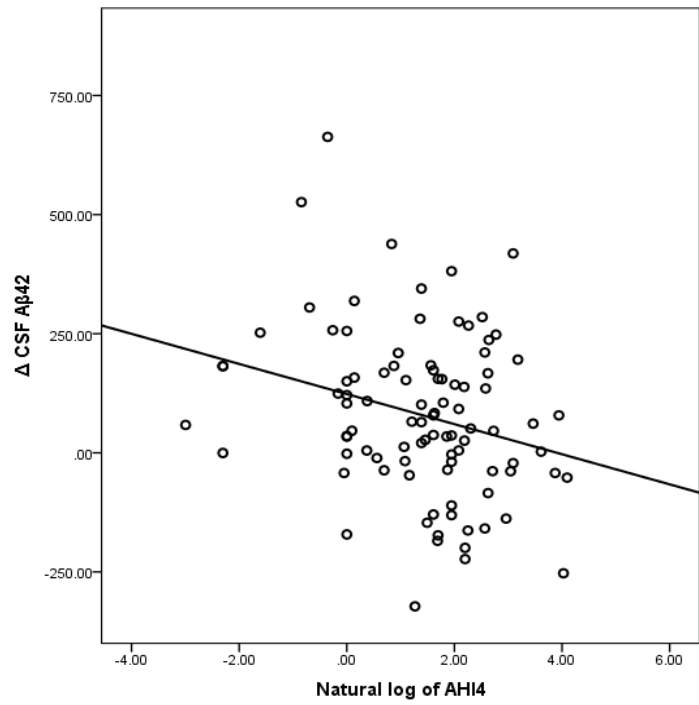
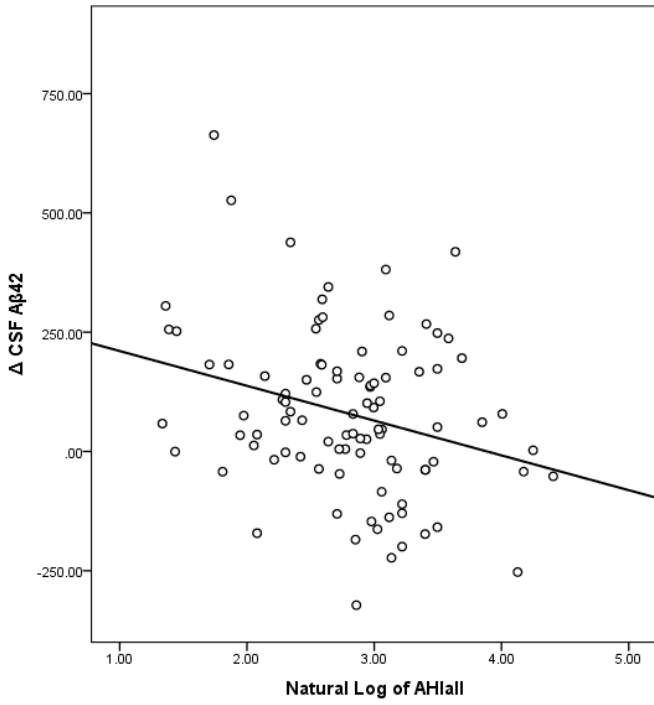
\*Statistical significant difference between the groups.

	Step 1		Age	Sex	BMI	ApoE4	Step 2	
	Covariates						AHIall	AHI4%
Annual $\Delta$ CSF A $\beta$ 42	R <sup>2</sup>	-0.008					.03†	.03†
	$\Delta$ R <sup>2</sup>						.04†	.04†
	$\beta$		-.14	.03	.07	-.11	-.23†	-.23†
Annual ln $\Delta$ PiB	R <sup>2</sup>	-.07					.00*	-.02
	$\Delta$ R <sup>2</sup>						.09*	.07
	$\beta$		.15	.05	-.24	.13	.32*	.30

Table 4: Final model showing relationship of annual  $\Delta$ CSF A $\beta$ 42 and annual ln  $\Delta$ PiB with AHIall and AHI4%.  $\beta$  values are for AHIall. † p<.05, \* p<.1

## Figures

### Figure 1



### Figure 2

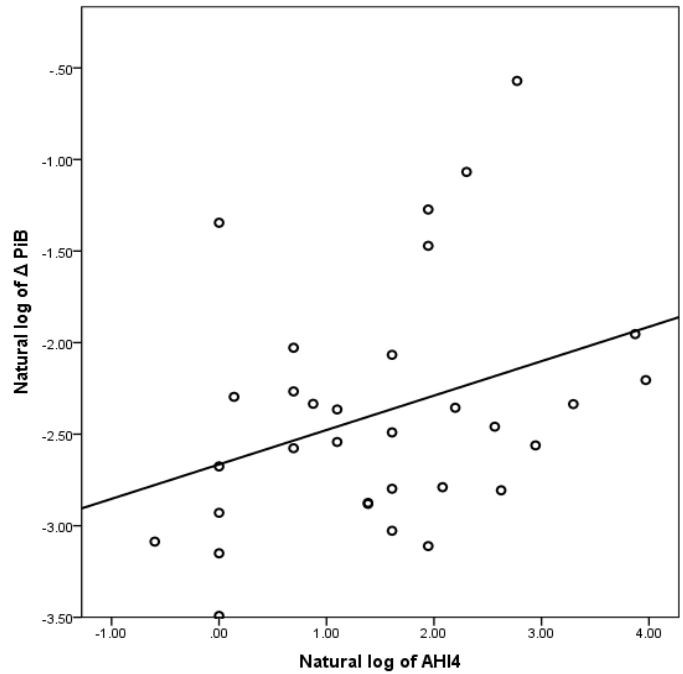
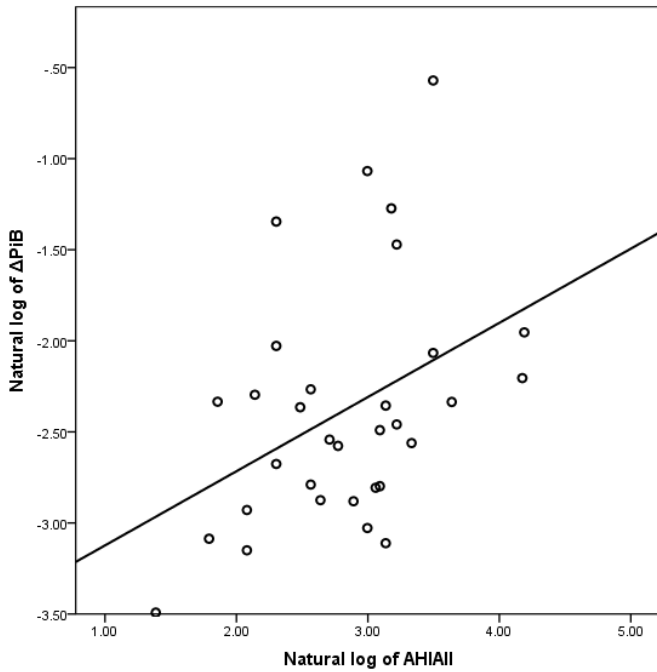


Figure 3

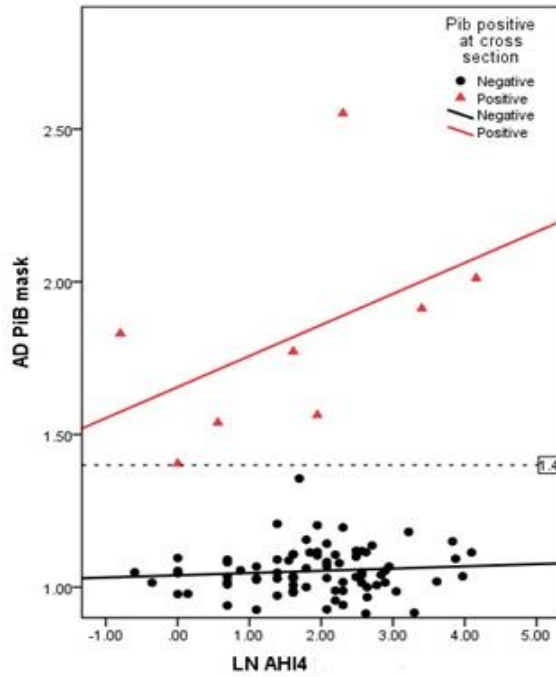
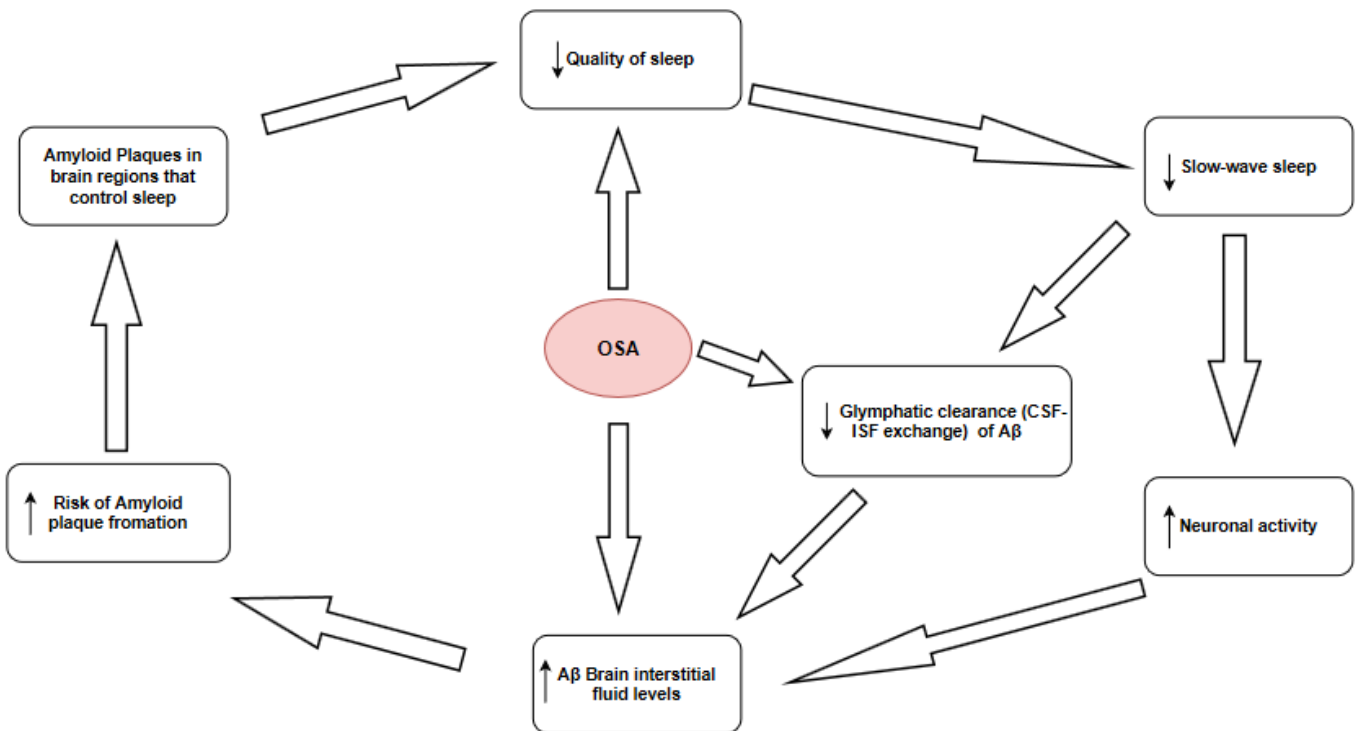


Figure 4



## Reference List

1. Hebert, L. E., L. A. Beckett, P. A. Scherr, and D. A. Evans. 2001. Annual incidence of Alzheimer disease in the United States projected to the years 2000 through 2050. *Alzheimer Dis.Assoc.Disord.* 15:169-173.
2. Heinzer, R., H. Marti-Soler, and J. Haba-Rubio. 2016. Prevalence of sleep apnoea syndrome in the middle to old age general population. *Lancet Respir.Med.* 4:e5-e6.
3. Yaffe, K., A. M. Laffan, S. L. Harrison, S. Redline, A. P. Spira, K. E. Ensrud, S. Ancoli-Israel, and K. L. Stone. 2011. Sleep-disordered breathing, hypoxia, and risk of mild cognitive impairment and dementia in older women. *JAMA* 306:613-619.
4. Hla, K. M., T. Young, L. Finn, P. E. Peppard, M. Szklo-Coxe, and M. Stubbs. 2008. Longitudinal association of sleep-disordered breathing and nondipping of nocturnal blood pressure in the Wisconsin Sleep Cohort Study. *Sleep* 31:795-800.
5. Shahar, E., C. W. Whitney, S. Redline, E. T. Lee, A. B. Newman, N. F. Javier, G. T. O'Connor, L. L. Boland, J. E. Schwartz, and J. M. Samet. 2001. Sleep-disordered breathing and cardiovascular disease: cross-sectional results of the Sleep Heart Health Study. *Am.J.Respir.Crit Care Med.* 163:19-25.
6. Sanchez-de-la-Torre, M., F. Campos-Rodriguez, and F. Barbe. 2013. Obstructive sleep apnoea and cardiovascular disease. *Lancet Respir.Med.* 1:61-72.
7. Ancoli-Israel, S., E. R. DuHamel, C. Stepnowsky, R. Engler, M. Cohen-Zion, and M. Marler. 2003. The relationship between congestive heart failure, sleep apnea, and mortality in older men. *Chest* 124:1400-1405.
8. Mehra, R., K. L. Stone, P. D. Varosy, A. R. Hoffman, G. M. Marcus, T. Blackwell, O. A. Ibrahim, R. Salem, and S. Redline. 2009. Nocturnal Arrhythmias across a spectrum of obstructive and central sleep-disordered breathing in older men: outcomes of sleep disorders in older men (MrOS sleep) study. *Arch.Intern.Med.* 169:1147-1155.
9. Fung, M. M., K. Peters, S. Redline, M. G. Ziegler, S. Ancoli-Israel, E. Barrett-Connor, and K. L. Stone. 2011. Decreased slow wave sleep increases risk of developing hypertension in elderly men. *Hypertension* 58:596-603.
10. Osorio, R. S., T. Gumb, E. Pirraglia, A. W. Varga, S. E. Lu, J. Lim, M. E. Wohlleber, E. L. Ducca, V. Koushyk, L. Glodzik, et al. 2015. Sleep-disordered breathing advances cognitive decline in the elderly. *Neurol* 84:1964-1971.
11. Emamian, F., H. Khazaie, M. Tahmasian, G. D. Leschziner, M. J. Morrell, G. Y. Hsiung, I. Rosenzweig, and A. A. Sepehry. 2016. The Association Between Obstructive Sleep Apnea and Alzheimer's Disease: A Meta-Analysis Perspective. *Front Aging Neurosci.* 8:78.
12. Spira, A. P., C. Yager, J. Brandt, G. S. Smith, Y. Zhou, A. Mathur, A. Kumar, J. R. Brasic, D. F. Wong, and M. N. Wu. 2014. Objectively Measured Sleep and beta-amyloid Burden in Older Adults: A Pilot Study. *SAGE Open.Med.* 2.
13. Osorio, R. S., I. Ayappa, J. Mantua, T. Gumb, A. Varga, A. M. Mooney, O. E. Burschtin, Z. Taxin, E. During, N. Spector, et al. 2014. The interaction between sleep-disordered breathing and apolipoprotein E genotype on cerebrospinal fluid biomarkers for Alzheimer's disease in cognitively normal elderly individuals. *Neurobiology of Aging* 35:1318-1324.



14. Helzner, E. P., J. A. Luchsinger, N. Scarmeas, S. Cosentino, A. M. Brickman, M. M. Glymour, and Y. Stern. 2009. Contribution of vascular risk factors to the progression in Alzheimer disease. *Arch.Neurol.* 66:343-348.
15. De La Torre, J. C. 2008. Pathophysiology of neuronal energy crisis in Alzheimer's disease. *Neurodegener.Dis.* 5:126-132.
16. De Santi, S., E. Pirraglia, W. B. Barr, J. Babb, S. Williams, K. Rogers, L. Glodzik, M. Brys, L. Mosconi, B. Reisberg, et al. 2008. Robust and conventional neuropsychological norms: Diagnosis and prediction of age-related cognitive decline. *Neuropsychology* 22:469-484.
17. Folstein, M. F., L. N. Robins, and J. E. Helzer. 1983. The Mini-Mental State Examination. *Arch.Gen.Psychiatry* 40:SP - 812.
18. Morris, J. C. 1993. The Clinical Dementia Rating (CDR): Current version and scoring rules. *Neurol* 43:2412-2414.
19. Johns, M. W. 1991. A new method for measuring daytime sleepiness: the Epworth sleepiness scale. *Sleep* 14:540-545.
20. Ayappa, I., R. G. Norman, V. Seelall, and D. M. Rapoport. 2008. Validation of a self-applied unattended monitor for sleep disordered breathing. *J.Clin.Sleep Med.* 4:26-37.
21. Tiihonen, P., T. Hukkanen, H. Tuomilehto, E. Mervaala, and J. Toyras. 2009. Evaluation of a novel ambulatory device for screening of sleep apnea. *Telemed.J.E.Health* 15:283-289.
22. Ayappa, I., R. G. Norman, M. Suryadevara, and D. M. Rapoport. 2004. Comparison of limited monitoring using a nasal-cannula flow signal to full polysomnography in sleep-disordered breathing. *Sleep* 27:1171-1179.
23. Spiegel, J., E. Pirraglia, R. S. Osorio, L. Glodzik, Y. Li, W. Tsui, L. A. Saint Louis, C. Randall, T. Butler, J. Xu, et al. 2015. Greater Specificity for Cerebrospinal Fluid P-tau231 over P-tau181 in the Differentiation of Healthy Controls from Alzheimer's Disease. *Journal of Alzheimer's Disease* 49:93-100,2015.
24. Vanderstichele, H., M. Bibl, S. Engelborghs, B. N. Le, P. Lewczuk, J. L. Molinuevo, L. Parnetti, A. Perret-Liaudet, L. M. Shaw, C. Teunissen, et al. 2012. Standardization of preanalytical aspects of cerebrospinal fluid biomarker testing for Alzheimer's disease diagnosis: a consensus paper from the Alzheimer's Biomarkers Standardization Initiative. *Alzheimers.Dement.* 8:65-73.
25. Mosconi, L., M. Brys, R. Switalski, R. Mistur, L. Glodzik-Sobanska, E. Pirraglia, W. H. Tsui, S. De Santi, and M. J. de Leon. 2007. Maternal family history of Alzheimer's disease predisposes to reduced brain glucose metabolism. *Proceedings of the National Academy of Sciences USA* 104:19067-19072.
26. Mosconi, L., R. Mistur, L. Glodzik, M. Brys, R. Switalski, E. Pirraglia, K. Rich, W. Tsui, S. De Santi, and M. J. de Leon. 2009. Declining brain glucose metabolism in normal individuals with a maternal history of Alzheimer's. *Neurol* 72:513-520.
27. Mosconi, L., J. O. Rinne, W. Tsui, V. Berti, Y. Li, J. Murray, H. Wang, N. Scheinin, K. Nagren, S. Williams, et al. 2010. Increased fibrillar amyloid- $\beta$  burden in normal individuals with a family history of late-onset Alzheimer's disease. *Proceedings of the National Academy of Sciences of the United States of America* 107:5949-5954.
28. Mosconi, L., J. Rinne, W. Tsui, J. Murray, Y. Li, L. Glodzik, P. McHugh, S. Williams, M. Cummings, E. Pirraglia, et al. 2013. Amyloid and metabolic positron emission tomography imaging of cognitively normal adults with Alzheimer's parents. *Neurobiology of Aging* 34:22-34.

29. Price, J. C., W. E. Klunk, B. J. Lopresti, X. Lu, J. A. Hoge, S. K. Ziolko, D. P. Holt, C. C. Meltzer, S. T. DeKosky, and C. A. Mathis. 2005. Kinetic modeling of amyloid binding in humans using PET imaging and Pittsburgh Compound-B. *Journal of Cerebral Blood Flow & Metabolism* 25:1528-1547.
30. Jack, C. R. Jr., D. S. Knopman, W. J. Jagust, L. M. Shaw, P. S. Aisen, M. W. Weiner, R. C. Petersen, and J. Q. Trojanowski. 2010. Hypothetical model of dynamic biomarkers of the Alzheimer's pathological cascade. *Lancet Neurol.* 9:119-128.
31. Mielke, M. M., H. J. Wiste, S. D. Weigand, D. S. Knopman, V. J. Lowe, R. O. Roberts, Y. E. Geda, D. M. Swenson-Dravis, B. F. Boeve, M. L. Senjem, et al. 2012. Indicators of amyloid burden in a population-based study of cognitively normal elderly. *Neurol* 79:1570-1577.
32. Nordberg, A., S. F. Carter, J. Rinne, A. Drzezga, D. J. Brooks, R. Vandenberghe, D. Perani, A. Forsberg, B. Langstrom, N. Scheinin, et al. 2013. A European multicentre PET study of fibrillar amyloid in Alzheimer's disease. *Eur.J.Nucl.Med.Mol.Imaging* 40:104-114.
33. Villeneuve, S., G. D. Rabinovici, B. I. Cohn-Sheehy, C. Madison, N. Ayakta, P. M. Ghosh, R. La Joie, S. K. Arthur-Bentil, J. W. Vogel, S. M. Marks, et al. 2015. Existing Pittsburgh Compound-B positron emission tomography thresholds are too high: statistical and pathological evaluation. *Brain* 138:2020-2033.
34. Martin, M. S., E. Sforza, F. Roche, J. C. Barthelemy, C. Thomas-Anterion, and PROOF study group. 2015. Sleep breathing disorders and cognitive function in the elderly: an 8-year follow-up study. the proof-synapse cohort. *Sleep* 38:179-187.
35. Sforza, E., F. Roche, C. Thomas-Anterion, J. Kerleroux, O. Beauchet, S. Celle, D. Maudoux, V. Pichot, B. Laurent, and J. C. Barthelemy. 2010. Cognitive function and sleep related breathing disorders in a healthy elderly population: the SYNAPSE study. *Sleep* 33:515-521.
36. Palmqvist, S., H. Zetterberg, N. Mattsson, P. Johansson, L. Minthon, K. Blennow, M. Olsson, and O. Hansson. 2015. Detailed comparison of amyloid PET and CSF biomarkers for identifying early Alzheimer disease. *Neurol* 85:1240-1249.
37. Maia, L. F., S. A. Kaeser, J. Reichwald, M. Lambert, U. Obermuller, J. Schelle, J. Odenthal, P. Martus, M. Staufenbiel, and M. Jucker. 2015. Increased CSF A $\beta$  during the very early phase of cerebral A $\beta$  deposition in mouse models. *EMBO Mol.Med.* 7:895-903.
38. Shoji, M., M. Kanai, E. Matsubara, Y. Tomidokoro, M. Shizuka, Y. Ikeda, M. Ikeda, Y. Harigaya, K. Okamoto, and S. Hirai. 2001. The levels of cerebrospinal fluid A $\beta$ 40 and A $\beta$ 42(43) are regulated age-dependently. *Neurobiology of Aging* 209-215.
39. Varga, A. W., M. E. Wohlleber, S. Gimenez, S. Romero, J. F. Alonso, E. L. Ducca, K. Kam, C. Lewis, E. B. Tanzi, S. Tweardy, et al. 2016. Reduced Slow-Wave Sleep Is Associated with High Cerebrospinal Fluid A $\beta$ 42 Levels in Cognitively Normal Elderly. *Sleep* 39:2041-2048.
40. Ju, Y. E., S. J. Ooms, C. Sutphen, S. L. Macauley, M. A. Zangrilli, G. Jerome, A. M. Fagan, E. Mignot, J. M. Zempel, J. A. H. R. Claassen, et al. 2017. Slow wave sleep disruption increases cerebrospinal fluid amyloid- $\beta$  levels. *Brain* 140:2104-2111.
41. Ju, Y. S., M. B. Finn, C. L. Sutphen, E. M. Herries, G. M. Jerome, J. H. Ladenson, D. L. Crimmins, A. M. Fagan, and D. M. Holtzman. 2016. Obstructive sleep apnea decreases central nervous system-derived proteins in the cerebrospinal fluid. *Ann.Neurol.*

42. Ooms, S., S. Overeem, K. Besse, M. O. Rikkert, M. Verbeek, and J. A. Claassen. 2014. Effect of 1 Night of Total Sleep Deprivation on Cerebrospinal Fluid beta-Amyloid 42 in Healthy Middle-Aged Men: A Randomized Clinical Trial. *JAMA Neurol.*
43. Remmers, J. E., W. J. deGroot, E. K. Sauerland, and A. M. Anch. 1978. Pathogenesis of upper airway occlusion during sleep. *J.Appl.Physiol Respir.Environ.Exerc.Physiol* 44:931-938.
44. Guilleminault, C., M. Partinen, M. A. Quera-Salva, B. Hayes, W. C. Dement, and G. Nino-Murcia. 1988. Determinants of daytime sleepiness in obstructive sleep apnea. *Chest* 94:32-37.
45. Ratnavadivel, R., D. Stadler, S. Windler, J. Bradley, D. Paul, R. D. McEvoy, and P. G. Catcheside. 2010. Upper airway function and arousability to ventilatory challenge in slow wave versus stage 2 sleep in obstructive sleep apnoea. *Thorax* 65:107-112.
46. Saboisky, J., D. Eckert, and A. Malhotra. 2010. Stable breathing through deeper sleeping. *Thorax* 65:95-96.
47. Wellman, A., A. S. Jordan, A. Malhotra, R. B. Fogel, E. S. Katz, K. Schory, J. K. Edwards, and D. P. White. 2004. Ventilatory control and airway anatomy in obstructive sleep apnea. *Am.J.Respir.Crit Care Med.* 170:1225-1232.
48. Ondze, B., F. Espa, Y. Dauvilliers, M. Billiard, and A. Besset. 2003. Sleep architecture, slow wave activity and sleep spindles in mild sleep disordered breathing. *Clin.Neurophysiol.* 114:867-874.
49. Brillante, R., G. Cossa, P. Y. Liu, and L. Laks. 2012. Rapid eye movement and slow-wave sleep rebound after one night of continuous positive airway pressure for obstructive sleep apnoea. *Respirology.* 17:547-553.
50. Lim, A. S., M. Kowgier, L. Yu, A. S. Buchman, and D. A. Bennett. 2013. Sleep Fragmentation and the Risk of Incident Alzheimer's Disease and Cognitive Decline in Older Persons. *Sleep* 36:1027-1032.
51. Baril, A. A., K. Gagnon, P. Brayet, J. Montplaisir, B. L. De, J. Carrier, C. Lafond, F. L'Heureux, J. F. Gagnon, and N. Gosselin. 2017. Gray Matter Hypertrophy and Thickening with Obstructive Sleep Apnea in Middle-aged and Older Adults. *Am.J.Respir.Crit Care Med.* (In press)
52. O'Donoghue, F. J., R. M. Wellard, P. D. Rochford, A. Dawson, M. Barnes, W. R. Ruehland, M. L. Jackson, M. E. Howard, R. J. Pierce, and G. D. Jackson. 2012. Magnetic resonance spectroscopy and neurocognitive dysfunction in obstructive sleep apnea before and after CPAP treatment. *Sleep* 35:41-48.
53. Shiota, S., H. Takekawa, S. E. Matsumoto, K. Takeda, F. Nurwidya, Y. Yoshioka, F. Takahashi, N. Hattori, T. Tabira, H. Mochizuki, et al. 2013. Chronic intermittent hypoxia/reoxygenation facilitate amyloid-beta generation in mice. *J.Alzheimers.Dis.* 37:325-333.
54. Tabuchi, M., S. R. Lone, S. Liu, Q. Liu, J. Zhang, A. P. Spira, and M. N. Wu. 2015. Sleep interacts with abeta to modulate intrinsic neuronal excitability. *Curr.Biol.* 25:702-712.
55. Ng, K. M., C. F. Lau, and M. L. Fung. 2010. Melatonin reduces hippocampal beta-amyloid generation in rats exposed to chronic intermittent hypoxia. *Brain Res.* 1354:163-171.
56. Lavie, P., L. Lavie, and P. Herer. 2005. All-cause mortality in males with sleep apnoea syndrome: declining mortality rates with age. *Eur.Respir.J.* 25:514-520.
57. Punjabi, N. M., B. S. Caffo, J. L. Goodwin, D. J. Gottlieb, A. B. Newman, G. T. O'Connor, D. M. Rapoport, S. Redline, H. E. Resnick, J. A. Robbins, et al. 2009. Sleep-disordered breathing and mortality: a prospective cohort study. *PLoS.Med.* 6:e1000132.

58. Liguori, C., N. B. Mercuri, F. Izzì, A. Romigi, A. Cordella, G. Sancesario, and F. Placidi. 2017. Obstructive Sleep Apnea is Associated With Early but Possibly Modifiable Alzheimer's Disease Biomarkers Changes. *Sleep* 40.