



University of Dundee

'MOVEdiabetes'

Al-Ghafri, Thamra S.; Alharthi, Saud M.; Al-Farsi, Yahya M.; Alrawahi, Abdul Hakeem; Bannerman, Elaine; Craigie, Angela M.; Anderson, Annie S.

DOI:

[10.1136/bmjdr-2018-000605](https://doi.org/10.1136/bmjdr-2018-000605)

Publication date:

2018

Document Version

Publisher's PDF, also known as Version of record

[Link to publication in Discovery Research Portal](#)

Citation for published version (APA):

Al-Ghafri, T. S., Alharthi, S. M., Al-Farsi, Y. M., Alrawahi, A. H., Bannerman, E., Craigie, A. M., & Anderson, A. S. (2018). 'MOVEdiabetes': A cluster randomized controlled trial to increase physical activity in adults with type 2 diabetes in primary health in Oman. 6(1), 1-14. [e000605]. <https://doi.org/10.1136/bmjdr-2018-000605>

General rights

Copyright and moral rights for the publications made accessible in Discovery Research Portal are retained by the authors and/or other copyright owners and it is a condition of accessing publications that users recognise and abide by the legal requirements associated with these rights.

- Users may download and print one copy of any publication from Discovery Research Portal for the purpose of private study or research.
- You may not further distribute the material or use it for any profit-making activity or commercial gain.
- You may freely distribute the URL identifying the publication in the public portal.

Take down policy

If you believe that this document breaches copyright please contact us providing details, and we will remove access to the work immediately and investigate your claim.

'MOVEdiabetes': a cluster randomized controlled trial to increase physical activity in adults with type 2 diabetes in primary health in Oman

Thamra S Alghafri,^{1,2} Saud Mohamed Alharthi,^{1,2} Yahya Al-Farsi,³ Abdul Hakeem Alrawahi,⁴ Elaine Bannerman,⁵ Angela M Craigie,⁵ Annie S Anderson⁵

To cite: Alghafri TS, Alharthi SM, Al-Farsi Y, *et al.* 'MOVEdiabetes': a cluster randomized controlled trial to increase physical activity in adults with type 2 diabetes in primary health in Oman. *BMJ Open Diab Res Care* 2018;**6**:e000605. doi:10.1136/bmjdr-2018-000605

Received 22 August 2018
Revised 27 September 2018
Accepted 16 October 2018



© Author(s) (or their employer(s)) 2018. Re-use permitted under CC BY-NC. No commercial re-use. See rights and permissions. Published by BMJ.

¹Ministry of Health, Muscat, Oman

²University of Dundee, Dundee, UK

³Department of Family Medicine and Public Health, College of Medicine and Health Sciences, Sultan Qaboos University, Muscat, Oman

⁴Department of Planning and Studies, Research Section, Oman Medical Specialty Board, Muscat, Oman

⁵Centre for Public Health Nutrition Research, University of Dundee, Ninewells Hospital and Medical School, Dundee, UK

Correspondence to
Dr Thamra S Alghafri;
tsalghafri@dundee.ac.uk

ABSTRACT

Objective This study examined the impact of a multicomponent intervention to increase physical activity (PA) in adults with type 2 diabetes (T2D) in Oman.

Research design and methods This is a cluster randomized controlled trial in eight primary health centers. Participants were physically inactive, aged ≥18 years, and with no contraindication to PA. Patients attending intervention health centers (n=4) received the 'MOVEdiabetes' intervention, which consisted of personalized, individual face-to-face consultations by dietitians. Pedometers and monthly telephone WhatsApp messages were also used. Patients attending comparison health centers received usual care. The primary outcome was change in PA [Metabolic Equivalent(MET).min/week] after 12 months assessed by the Global Physical Activity Questionnaire. The secondary outcomes were changes in daily step counts, sitting time, weight, body mass index, glycated hemoglobin, blood pressure and lipids.

Results Of the 232 participants (59.1% female, mean (SD) age 44.2 (8.1) years), 75% completed the study. At 12 months, the mean change in MET.min/week was +631.3 (95% CI 369.4 to 893.2) in the intervention group (IG) vs +183.2 (95% CI 83.3 to 283.0) in the comparison group, with a significant between-group difference of +447.4 (95% CI 150.7 to 744.1). The odds of meeting PA recommendations were 1.9 times higher in the IG (95% CI 1.2 to 3.3). Significant between-group differences in favor of IG were detected for mean steps/day (+757, 95% CI 18 to 1531) and sitting time hours/ per day (−1.5, 95% CI −2.4 to −0.7). Clinical measures of systolic and diastolic blood pressure and triglycerides also showed significant intervention effects.

Conclusions 'MOVEdiabetes' was effective in increasing PA, the likelihood of meeting PA recommendations, and providing cardioprotective benefits in adults with T2D attending primary care.

INTRODUCTION

Similar to global trends, diabetes prevalence in Oman is increasing. Recent estimates in Omani adults are in the order of 12.6%, which is exceeding global rates.¹ This increase is predominantly in type 2 diabetes (T2D),

Significance of this study

What is already known about this subject?

- ▶ The relationship between physical activity (PA) and type 2 diabetes (T2D) has been widely researched.
- ▶ Minimal progress has been made in the implementation of research findings within everyday diabetes care practice.

What are the new findings?

- ▶ The current 1-year intervention was delivered in a real setting and using existing healthcare staff.
- ▶ This paper shows that the 'MOVEdiabetes' intervention was effective in increasing the PA levels in inactive adults with T2D.
- ▶ Secondary outcomes showed positive changes in blood pressure and triglycerides.

How might these results change the focus of research or clinical practice?

- ▶ Personalized PA consultations can be delivered within routine diabetes primary care.
- ▶ The role of the existing staff in diabetes primary care, namely dietitians, could be extended to deliver PA promotional methods, including PA consultations, use of pedometers and 'WhatsApp' monthly messages.

which is preventable through lifestyle modifications.² While diet and body weight are already part of routine diabetes management, physical activity (PA) advice and guidance is not routinely provided.

Evidence on the positive effects of PA on the management of T2D is strong, yet evidence on the effective ways for PA implementation as part of diabetes care is lagging behind.^{3 4} Lifestyle modification including PA can result in improved glycemic control, lower blood sugar levels, reduced body fat, and a reduced risk of serious complications and premature mortality.⁵⁻⁷ To achieve clinical benefits, the

WHO recommends at least 150 min of moderate-intensity PA or 75 min of vigorous-intensity PA per week, or a combination of the two.⁸ However, the majority of people with T2D are physically inactive compared with national norms in both Western (over 60% in USA)⁹ and Arabic-speaking countries (over 80% in Oman and Lebanon).^{10,11}

Current evidence on PA interventions in diabetes primary care comes mostly from Western countries, with mixed results.⁴ PA interventions have differed in their setting (clinical vs community), intervention methods (PA consultations, exercise sessions, or use of technology) and duration (short of 3–6 months vs long ≥ 12 months).⁴ Incorporating behavior change techniques (BCTs) in PA interventions has been shown to help individuals move from ‘inactive’ to ‘active’ stages of change for PA.¹² While there are a large number of BCTs, these have been standardized by Abraham and Michie¹³ to assist the development of lifestyle interventions, and more recent updates describe an extensive range of opportunities to assist the design of context-specific programs.^{13–15} However, further research is needed to establish how far the BCTs can lead to more efficient designs for improving the PA behaviors in the context of diabetes care.¹⁴ Avery *et al*¹² (2012–2015) distinguished five context-appropriate BCTs for use during time-constrained consultations in diabetes care. These include ‘prompt focus on past success’, ‘barrier identification’, ‘use of follow-up prompts’, ‘providing information on where and when to perform the behaviour’ and ‘prompt review of behavioural goals of PA’.¹² Further research is needed to investigate the BCTs that could be effective in promoting PA in Arabic-speaking countries.

Evidence on the effectiveness of personalized PA consultations in clinical settings along with other supportive methods (eg, use of pedometers and telephones)^{15–17} has been reported in many studies in the West, including guidelines on how to deliver them.^{18–21} To address the sociodemographic, cultural and clinical diversities, the impact of such approaches on PA promotion in local routine diabetes primary care setting in the Middle East is yet to be explored.

Consistent with the socioecological model of health behavior²² and the Behaviour Change Wheel model,¹⁴ the work presented in this paper is underpinned by a series of formative studies undertaken in adults with T2D and diabetes primary care providers in Oman.^{23–25} The results showed that face-to-face PA consultations linked to BCTs, devices to support walking such as pedometers, and use of a telephone application (WhatsApp) could be promising components in an intervention design. Hence, these methods have been used in the ‘MOVEdiabetes’ intervention,²⁶ the trial protocol for which is published elsewhere.²⁶

The aim of this paper is to describe the effectiveness of the multicomponent ‘MOVEdiabetes’ intervention on change in PA levels (primary outcome), and changes in objectively measured steps/day, sitting time (hours/ per

day), weight, body mass index (BMI), glycated hemoglobin (HbA1c), blood pressure and lipids (secondary outcomes).

METHODS

Study design and randomization

The study was a 1-year (April 2016–June 2017) cluster randomized controlled trial of the ‘MOVEdiabetes’ intervention versus usual care.²⁶ Out of the 26 health centers in Muscat, 8 were randomly selected by an independent statistician using random numbers table generated in SPSS V.22. Health centers were then randomized to deliver either the intervention in the intervention group (IG) health centers (n=4) or usual care in the comparison group (CG) health centers (n=4).²⁶

Study population and recruitment

Eligible participants were adults aged ≥ 18 years with T2D who had been attending health centers for at least 6 months for diabetes care and were screened by recruited project officers (POs) as being inactive using the Scottish Physical Activity Screening Questionnaire,²⁷ with no contraindication to increasing PA, and able to provide written informed consent.²⁶

Sample size

To demonstrate a 50% between-group difference in PA levels (MET.min/week) over 12 months, to be detected at a power of 80%, and a significance level of 5%, 128 participants were required to complete the study (64 in each arm).²⁶ This sample size (n) was calculated based on an estimation from formative work of the SD of mean PA levels of 145 MET.min/week²⁵ and mean sitting time (hours/day) of 0.2 with intraclass correlation coefficient of 0.1.²⁸ Based on a dropout rate of 20%, 154 patients were required to participate (77 in each arm). Assuming a recruitment rate of 70%, it was estimated that 220 potential eligible patients were required to be approached.²⁶

Ethics

Ethical approval was obtained from the Omani Research and Ethical Review and Approve Committee in the Ministry of Health and reciprocally approved in the University of Dundee (online supplementary material 1). In addition to providing informed consent, individuals were given the right to withdraw consent for participation in any aspect of this trial at any time without affecting their routine diabetes care. All participants were advised to report any serious adverse events occurring throughout the trial as they would immediately be referred by the POs to their general practitioner.²⁶

Training

Initially, three POs were recruited at each site (n=24) from the existing diabetes healthcare providers (doctors/nurses/dietitians/health educators). POs received a 5-day bespoke training program facilitated by a health psychologist and public health specialist from the UK

and local PA experts. The training included recruitment procedures, outcome measurements, and delivering the 'MOVEdiabetes' intervention.²⁶ More importantly, it was agreed by all the POs that the dietitians would conduct the PA consultations.²⁴ This decision was based on discussions guided by insights from healthcare professionals, reported in one of the formative studies, on extending the role of dietitians to deliver PA services within diabetes primary care.²⁴

Measures/assessment instruments

A multicomponent questionnaire was developed, reviewed and approved by the research group and ethics committee. Except for the sociodemographic data at baseline, all primary and secondary outcome data were collected at baseline and at 3 and 12 months.²⁶ The questionnaire included the following:

Sociodemographic data

Age, gender, marital status, education, and income were collected from the electronic health information system (HIS), and if data were missing they would be asked for it.

Metabolic and cardiovascular biomarkers

Weight, BMI (kg/m²), systolic and diastolic blood pressure (mm Hg), HbA1c (%), and lipid profile (mmol/L) (total cholesterol, high-density lipoprotein (HDL), low-density lipoprotein (LDL), triglycerides (TGs)) were collected from the HIS in the health center.

Levels of PA and sitting time

Self-perceived PA (MET.min/week) was estimated via face-to-face interviews using the Global Physical Activity Questionnaire (GPAQ).²⁹ GPAQ is a 13-item PA questionnaire where levels of PA (MET.min/week) are estimated across work, travel and leisure domains.⁸ Moreover, objective assessment of PA (steps/day) and sitting time (hours/day) was carried out in a subset of selected subjects (40%). Initially all participants were offered accelerometers (activPAL micro, an ~20 g professional PA monitor)³⁰ until the required numbers were reached. Application and removal of the accelerometers were performed in the health centers by the POs. The devices were programmed to continuously work for 7 days. They were wrapped in a plastic sleeve and then attached directly to the skin of the midline of the anterior aspect of the participant's right thigh using an adhesive pad and tube bandages to keep the activity monitor in place.³¹ Participants were asked to adhere to wearing the device for 24 hours for 7 days and record their sleeping/waking time and removal of the device in a daily log given to them. Participants were strongly advised not to remove the device unless for swimming activities or if they experienced an allergic reactions, but to contact the POs in their respected health center if such an instance arose.

Self-efficacy,³² social support,³³ and a trial-specific self-assessed general health questionnaire²⁶ were used

at baseline and at 12 months. The results from these secondary outcomes will be presented in parallel papers.²⁶

Blinding

Except for the sociodemographic data at baseline, all measures were collected by specialist diabetes nurses who were blinded to the study objectives and group allocation. Owing to the nature of this study, the POs could not be blinded to study objectives; however, they were not involved in data entry and/or analysis.

The 'MOVEdiabetes' intervention group

All patients are advised on diet and weight management as part of routine care, but there are no requirements to focus on PA. The 'MOVEdiabetes' intervention was undertaken as personalized face-to-face consultations (maximum 20 min) by trained dietitians on three occasions (weeks 0, 4 and 8).²⁶ The consultations aimed to encourage participants to achieve 150 min of moderate-intensity or 75 min of vigorous-intensity PA (or a combination of the two) per week (≥ 600 MET.min/week) at 12 months.²⁶ The consultations were based on multiple BCTs reported in the 'MOVEdiabetes' study protocol.^{26,34} The content of the consultations is described in figure 1.

It is estimated that a step count of no less than 6000–7000 per day is required to achieve this goal.³⁵ Hence, all participants were given pedometers (Yamax Digi-Walker SW-200, Yamasa Tokei Keiki, Tokyo, Japan) to record their daily step counts for self-motivation and monitoring. Feedback on step counts was given within the PA consultation visits and/or discussed over the WhatsApp telephone application.

Notably, all participants receiving the intervention activated their telephone WhatsApp application and received monthly messages from the POs in their respected health center.³⁶ The messages were standardized to coincide with the international occasions/celebrations. These were hoped to motivate the participant to perform more PA (table 1). The messages were initially put in English and then translated to Arabic language to be sent to the participants. The content was reviewed and approved by the central and regional research ethical committees within the 'MOVEdiabetes' study protocol. POs initiated the WhatsApp groups, facilitated the conversations and monitored the group dynamics.

Comparison group

Participants allocated to the CG received no further study relevant contacts after 3 months measures until the end of the study where they had their final measurements recorded at 12 months follow-up.

Statistical analysis

The quality of the entered data was cross-checked by staff trained in quality assurance using checklists specific to the study in a sample of 10% of questionnaires selected at random. Data were entered into Epi Info V.7,³⁷ checked and cleaned prior to analysis. Entered data were transferred to IBM SPSS Statistics V.22.0 for Windows for

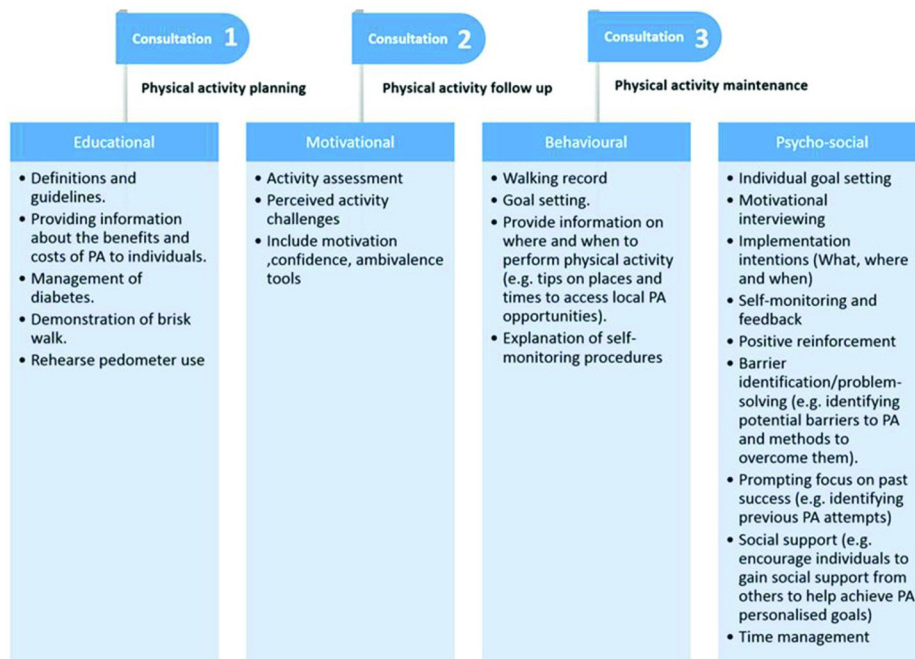


Figure 1 Content of the face-to-face personalized physical activity (PA) consultations.

analysis according to the GPAQ protocol.⁸ An intention-to-treat analysis was performed according to the last value carried forward imputation for missing data at 3 and/or 12 months, and a mean imputation procedure was done

where baseline data were missing. Descriptive statistics were expressed as proportions, mean (SD), and median (IQR) at the study group level.

Table 1 Content of WhatsApp monthly messages

Month	Message	Special occasion if any
May	It is evident that regular physical activity of at least 150 min of moderate to vigorous intensity per week improves your body hemodynamics and blood glucose. Let's start slowly and build up the amount of time and intensity of the activity.	World Hypertension Day
June	Ramadhan is the month to fast from food and increase body movement, take this opportunity to increase your physical activity behavior.	Ramadhan
July	Include physical activity in your happy social and religious events.	Eid Al-Fitr
August	Breast feeding is good for mothers and babies especially if it is complemented with healthy lifestyle including physical activity.	World Breast Feeding Week
September	Pilgrim is the event that includes extensive physical activity. Increase your steps and keep on walking.	Eid Al-Adha
October	Physical activity is good for prevention and management of cancer so try to reach to 10 000 steps a day.	Breast Cancer Awareness Day
November	Celebrate the national day and have better diabetes control by increasing your daily walking steps.	Oman National Day and World Diabetes Day
December	Aging is an unavoidable risk factor, prevent disability by increasing you physical activity.	International Day of Persons with Disability
January	Start your new year with an aim to increase physical activity.	New Year
February	Being active physically is an important part of good health. 20–30 min of moderate to vigorous physical activity a day can help improve your health.	Healthy Lifestyle Awareness Day
March	Women are more vulnerable to be physically inactive. Keep moving to stay healthy, strong and pretty.	International Women's Day
April	It is never too late to start being physically active.	World Health Day
May	Being physically active supports diabetes prevention and management.	Ramadhan

Due to skewness of data obtained, a univariate analysis was done in two steps. Initially, for each outcome, differences at 3 and 12 months from baseline were calculated, and Mann-Whitney U tests used to estimate between-group differences (intervention vs comparison) and the Wilcoxon signed-rank test to estimate within-group differences. Then, a time trend for treatment effect was estimated from a generalized linear model (GLM).

Furthermore, the primary outcome was dichotomized to meeting the WHO PA recommendations, if MET.min/week values were ≥ 600 , and not meeting the recommendations for <600 MET.min/week. GLM was used to determine the between-group difference in meeting the PA recommendations at 3 and 12 months independently.

Moreover, within the IG, a multivariate analysis was carried out to identify potential correlates for changes in PA at 12 months across the studied sociodemographic characteristics.

Accelerometer data of valid days, defined as 24 hours of wear per day with an allowance of no more than 4-hour removal time per day over the 7-day wear, with the monitor positioned in a dynamic axis orientation, were analyzed using a customized activPAL3 software.³⁸ Prior to analysis, daily hours of sleep were estimated from the participants' daily logs and eliminated from the outputs. The total number of steps per day and sitting time were then extracted from the accelerometer outputs, and between-group differences were explored.

Patient involvement

No patients were involved in setting the research question or the outcome measures, nor were they involved in developing plans for design or implementation of the study. No patients were asked to advise on interpretation or writing up of results. However, plans to disseminate the results of the research to study participants and relevant patient community will be considered.

RESULTS

Recruitment, retention and attrition

Of the 441 participants who were screened for inactivity, 232 (53%) consented to participate in the study. In total 174 (75%) completed the study measurements at baseline and at 3-month and 12-month follow-up (110 IG vs 105 CG, and 82 IG vs 92 CG, respectively). [Figure 1](#) presents the Consolidated Standards of Reporting Trials (CONSORT) flow chart that describes the progress of participants throughout the 12-month follow-up study.

Overall, out of 232 participants who provided consent, 227 (97.8%) completed the baseline measurements, 215 (92.7%) completed the 3-month follow-up measurements and 174 (75%) completed the final 12-month measurements. The reasons for attrition (IG n=40, CG n=18) are presented in the CONSORT diagram ([figure 2](#)), and the most frequently reported reasons were feeling uncomfortable with the accelerometers (41%), joint pain

(14%), travel outside of Oman (12%), or being lost to follow-up without a reason being given (17%).

Participants' sociodemographic and physiological characteristics

At baseline, more than half of the participants in both the intervention and comparison groups were women (64.5% and 54.1%, respectively), and the mean age (SD) of the total population was 44.2 (8.1) with a range of 22–68 years. The majority of the population (79.3%) were married, and half (50.9%) had completed their secondary education. Income was reported by 87.5% of the total population, of which more than half reported a moderate income of ≤ 1000 Omani rials/month. Additionally, more than half of the total population were employed, with a higher percentage in the intervention than in the comparison group (65.6% vs 50%, respectively). The two groups were similar in social status except for marital status (more married individuals in the CG vs IG) ($p=0.03$) and employment status (more employed individuals in the IG vs CG) ($p=0.02$) ([table 2](#)).

The mean (SD) duration of diabetes for the total population was 5.8 (3.7) years, and 77.2% of them reported comorbidities, mainly hypertension (45.3%) or hyperlipidemia (35.6%) or both (15%), for which all were on antihypertensives or statins (lipid-reducing drugs) or both accordingly. Most (81%) of the sample (84.5% IG vs 77.3% CG) were on oral hypoglycemic drugs, of which 13.8% also used insulin (9.8% IG vs 18.2% CG; $p=0.07$) ([table 2](#)).

At baseline, the mean (SD) BMI was >30 (8.3) kg/m^2 in both groups. The mean systolic blood pressure (SBP) levels were within the target levels of <140 mm Hg in both groups. The mean (SD) diastolic blood pressure (DBP) was significantly higher in the IG (83.2 (9.4) mm Hg) than in the CG (78.7 (14.4) mm Hg) ($p=0.003$). The mean (SD) HbA1c in both groups was $>7.0\%$ (8.1 (1.7)% IG vs 7.8 (1.7)% CG), indicating poor diabetes control according to the Omani diabetes management guidelines.³⁹ The average levels of total cholesterol and LDL, in both groups, were higher than the target limits. However, HDL and TG levels were all within target limits. There were no significant between-group differences in BMI, SBP, HbA1c, and lipid profile at baseline ([table 3](#)).

Change in primary outcome (PA levels)

Overall, about two-thirds (68.9%) of the calculated PA level (MET.min/week) was attributed to leisure activity, followed by 28.6% by travel and 2.5% by work. The dominance of leisure activity as the main contributor to the overall PA levels was prominent in both groups at all measurement points.

At baseline there was no difference in median PA levels between the groups ($p=0.08$). However, at 3-month and 12-month follow-up, the median (IQR) change in PA from baseline was significantly greater in the IG than in the CG at both time-points: +17% at 3 months (+140 (0–480) vs 0 (0–330) MET.min/week, respectively; $p=0.04$) and +26%

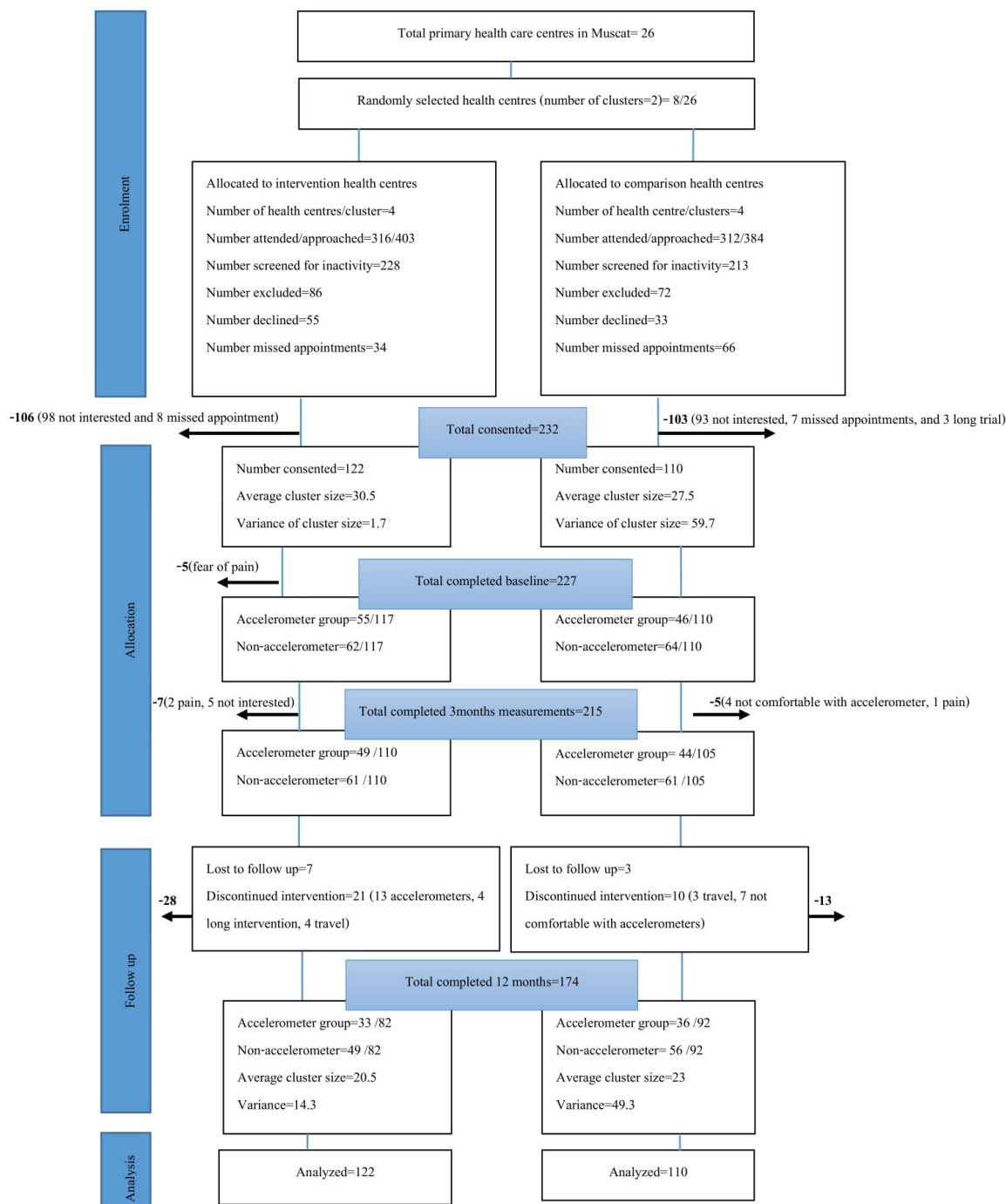


Figure 2 Consolidated Standards of Reporting Trials flow chart describing progress of participants through the 12-month follow-up study.

Table 2 Participants' sociodemographic characteristics in the treatment group

Characteristics	Intervention group n=122 (52.6%)	Comparison group n=110 (47.4)	Total population n=232 (%)
Gender			
Male	56 (45.9)	39 (35.5)	95 (40.9)
Female	66 (54.1)	71 (64.5)	137 (59.1)
Age (years)			
Mean (SD)	43.5 (7.1)	45.1 (9.2)	44.2 (8.1)
≤44	65 (53.3)	48 (43.6)	113 (48.7)
>44	57 (46.7)	62 (56.4)	119 (51.3)
Marital status			
Currently unmarried	32 (26.2)	16 (14.5)	48 (20.7)
Currently married	90 (73.8)	94 (85.5)	184 (79.3)
Education			
≤Secondary	62 (50.8)	52 (47.3)	114 (49.1)
>Secondary	60 (49.2)	58 (52.7)	118 (50.9)
Income (Omani rials)*			
≤1000 per month	70 (57.4)	55 (50)	125 (53.9)
>1000 per month	41 (33.6)	37 (33.6)	78 (33.6)
Employment			
Currently unemployed	42 (34.4)	55 (50)	97 (41.8)
Currently employed	80 (65.6)	55 (50)	135 (58.2)
Mean duration of diabetes (SD)			
≤5 years	63 (51.6)	52 (47.3)	115 (49.6)
>5 years	59 (48.4)	58 (52.7)	117 (50.4)
Comorbidities†			
No comorbidities	27 (22.1)	26 (23.6)	53 (22.8)
With comorbidities	95 (77.9)	84 (76.4)	179 (77.2)
Diabetes medication			
Diet only	7 (5.7)	5 (4.5)	12 (5.2)
Oral hypoglycemic drugs	103 (84.5)	85 (77.3)	188 (81.0)
Oral hypoglycemic+insulin	12 (9.8)	20 (18.2)	32 (13.8)

*29 missing values due to reporting 'I don't know'.

†Presence of hypertension, hyperlipidemia, thyroid, or any other condition coinciding with diabetes registered in the health information system.

at 12 months (+80 (0–663) vs 0 (–7.5–361) MET.min/week, respectively; $p=0.01$) (figure 3).

Additionally, figure 4 illustrates the steady increase in PA levels in both treatment groups, but in particular the significantly higher mean gain from baseline in the IG than in the CG at 12 months (+447.4 (95% CI 150.7 to 744.1) MET.min/week, $p=0.003$) (table 2).

Within the IG, the gain in PA levels at 12 months was significantly associated with high education (+500 MET.min/week, $p=0.04$, 95% CI 33.0 to 1144.4) and high income (+600 MET.min/week, $p=0.02$, 95% CI 127.7 to 1278.6).

Despite no significant differences at baseline, the odds of meeting the WHO PA recommendations were significantly higher, by 1.8 ($p=0.04$, 95% CI 1.1 to 3.1) and 1.9

($p=0.02$, 95% CI 1.2 to 3.3) times, in the IG compared with the CG at 3 and 12 months, respectively (table 4).

Secondary outcomes

Objectively measured step counts/day

Around half (48%) ($n=59$) of the participants in the IG vs 40% ($n=44$) in the CG used accelerometers at baseline. Overall, 69 participants (67%) had completed accelerometer use at both baseline and 12 months (33 in the IG vs 36 from the CG). The average (SD) number of valid days (minimum of 4 valid days) at baseline and at 3 and 12 months was 5.7 (1.0) ($n=45$), 5.3 (1.2) ($n=38$) and 5.3 (1.3) ($n=28$) in the IG, and 5.9 (1.0) ($n=39$), 5.4 (0.93) ($n=32$) and 5.9 (1.1) ($n=30$) in the CG, respectively.

Table 3 Changes in primary (PA (MET.min/week) and sitting time (hours/day)) and secondary outcome measures from baseline to 3 and 12 months, by treatment group

Measures	Baseline			3 months			12 months			Between-group difference, p values	
	n	Mean (SD)	n	Mean (SD)	Difference from baseline	n	Mean (SD)	Difference from baseline	3 months	12 months	
Primary outcome											
Self-reported PA average MET.min/week											
Intervention	117	200 (342)	110	591 (1054)	+390 (978)	82	832 (1515)	+631 (1461)	+246 (39.2 to 452.6)	+447 (150.7 to 744.1)	
Comparison	110	201 (235)	105	345 (368)	+144 (329)	92	385 (524)	+183 (529)	0.02*	0.003*	
Secondary outcomes											
Objectively measured steps/day											
Intervention	59	4752 (1058)	44	5912 (1620)	+1161 (1617)	33	7034 (2408)	+2282 (2635)	+43 (-544 to 630)	+757 (18.4 to 1531)	
Comparison	44	5932 (5413)	39	5870 (1369)	-62.1 (5270)	36	6278 (1270)	+346 (5297)	0.9	0.049*	
Objectively measured sitting time hours/day											
Intervention	59	13.4 (2.4)	44	12.4 (1.9)	-1.1 (1.6)	33	12.2 (2.2)	-1.2 (1.7)	-1.3 (-2.2 to -0.6)	-1.5 (-2.4 to -0.7)	
Comparison	44	13.7 (1.0)	39	13.6 (1.2)	0.2 (0.8)	36	13.7 (1.4)	+0.1 (1.2)	<0.001*	<0.001*	
Weight											
Intervention	117	89.6 (20.5)	110	88.8 (20.5)	-0.8 (2.6)	82	85.9 (16.8)	-3.7 (10.4)†	+4.0 (-1.2 to 9.2)	-2.2 (-2.4 to 6.9)	
Comparison	110	85.6 (20.5)	105	84.8 (20.2)	-0.7 (3.7)	92	83.7 (19.5)	-1.7 (8.2)	0.1	0.3	
BMI (kg/m²)											
Intervention	117	33.8 (7.9)	110	33.8 (6.8)	-0.001 (4.5)	82	31.8 (4.5)	-0.03 (4.5)†	+0.7 (-1.2 to 2.5)	-0.6 (-1.9 to 0.8)	
Comparison	110	33.1 (8.7)	105	33.2 (7.8)	+0.08 (5.3)	92	32.4 (6.2)	+0.08 (5.3)	0.49	0.40	
HbA1c (%)											
Intervention	117	8.1 (1.7)	110	8.1 (1.2)	+0.1 (1.200)	82	7.7 (1.4)	-0.4 (1.8)†*	+0.3 (-0.1 to 0.7)	+0.2 (-0.2 to 0.5)	
Comparison	110	7.8 (1.7)	105	7.8 (1.6)	+0.1 (0.817)	92	7.5 (1.3)	-0.3 (1.5)	0.11	0.30	
Systolic blood pressure (mm Hg)‡											
Intervention	117	128 (9.0)	110	126 (12.1)	-1.9 (13.0)	82	128 (5.7)	-0.6 (9.4)	-3.8 (-6.7 to -0.9)	-1.8 (-3.5 to -0.1)	
Comparison	110	129 (10.7)	105	130 (9.9)	+0.9 (8.1)	92	129 (7.5)	+0.2 (8.6)	0.008*	0.04*	
Diastolic blood pressure (mm Hg)‡											
Intervention	117	83 (9.4)	110	82 (6.6)	-1.1 (9.3)	82	80 (4.2)	-3.1 (9.4)	+0.9 (-1.0 to 2.9)	-1.6 (-2.6 to -0.7)	
Comparison	110	78.7 (14.4)	105	81.1 (8.5)	+0.5 (13.1)	92	81.7 (5.4)	+3.0 (0.7)	0.36	0.001*	
Fasting cholesterol (mmol/L)‡											

Continued

Table 3 Continued

Measures	Baseline		3 months		12 months		Between-group difference, p values	
	n	Mean (SD)	n	Mean (SD)	n	Mean (SD)	Difference from baseline	12 months
Intervention	117	5.0 (1.2)	110	4.8 (0.7)	82	4.5 (1.0)	-0.5 (1.1)	-0.08
Comparison	110	4.9 (1.0)	105	4.9 (0.9)	92	4.6 (0.8)	-0.3 (0.9)	(-0.3 to 0.2) 0.51
HDL (mmol/L)‡								
Intervention	117	1.6 (1.2)	110	1.6 (0.7)	82	1.9 (0.9)	-0.04 (1.5)	+0.1
Comparison	110	1.8 (1.5)	105	1.6 (1.1)	92	1.8 (0.8)	+0.3 (1.6)	(-0.1 to 0.3) 0.31
LDL (mmol/L)‡								
Intervention	117	2.9 (1.0)	110	2.9 (0.9)	82	2.4 (0.9)	-0.3 (0.9)	-0.2
Comparison	110	3.0 (0.9)	105	2.9 (0.9)	92	2.6 (0.9)	-0.7 (1.2)	(-0.3 to 0.2) 0.14
TG (mmol/L)‡								
Intervention	117	1.4 (0.6)	110	1.4 (0.8)	82	1.3 (0.5)	-0.09 (0.3)	-0.3
Comparison	110	1.5 (0.9)	105	1.6 (1.0)	92	1.6 (1.0)	+0.05 (0.7)	(-0.5 to -0.08) 0.006*

*Bold format = significant values at P<0.05.

†Significant within-group difference at 12 months from baseline using non-parametric test (Wilcoxon signed-rank test).

‡All target values are based on the Oman diabetes mellitus management guidelines (2015): BMI 18.5–25 kg/m², HbA1c ≤7%, SBP/DBP <140/<80 mm Hg, cholesterol <5.0 mmol/L, HDL >1.0 mmol/L, LDL <2.6 mmol/L, TG <1.7 mmol/L.

§

§

BMI, body mass index; DBP, diastolic blood pressure; HDL, high-density lipoprotein; HbA1c, glycated haemoglobin; LDL, low-density lipoprotein; MET, Metabolic Equivalent; PA, physical activity; SBP, systolic blood pressure; TG, triglycerides.

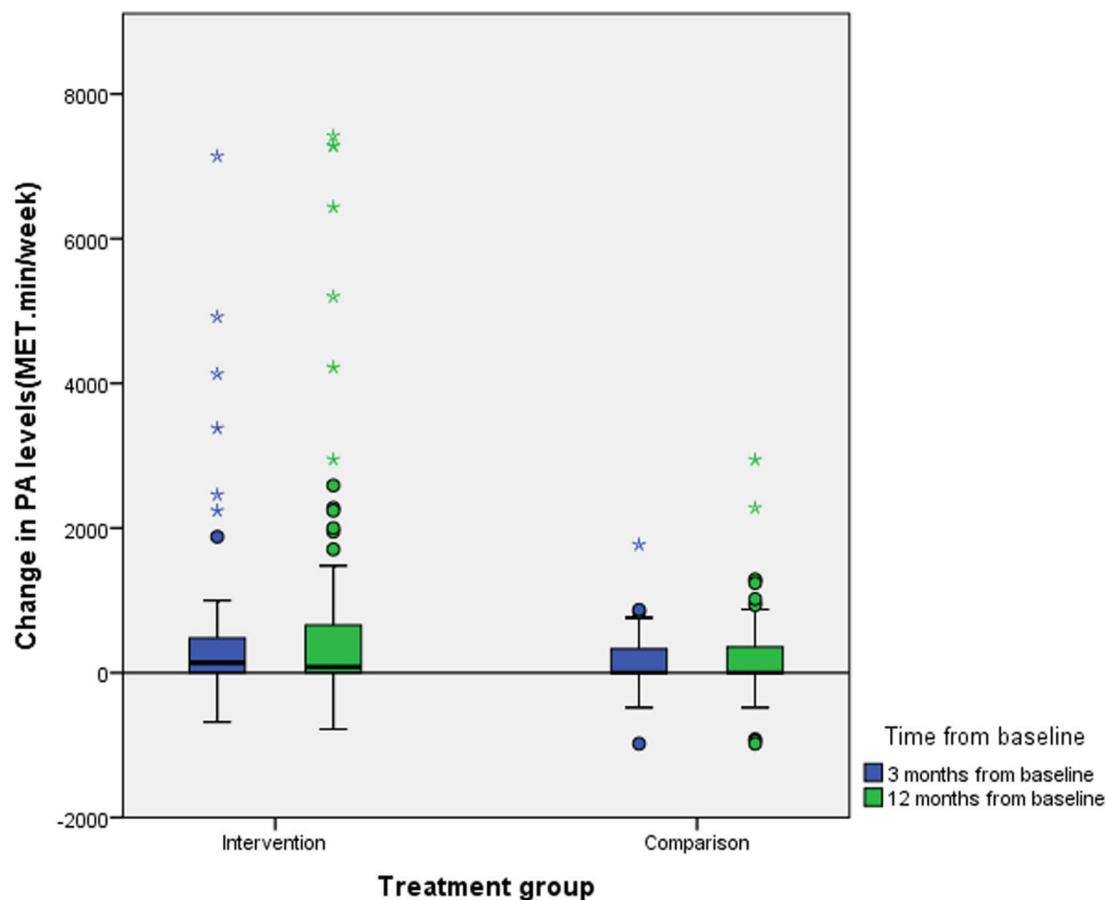


Figure 3 Change in physical activity (PA) levels from baseline at 3 and 12 months by treatment group. MET, Metabolic Equivalent.

The average number of steps/day initially increased in the IG only at 3 months, thereafter increasing in both groups, such that the overall increase from baseline at 12 months was significantly greater in the IG than in the CG (table 4). Overall at 12 months the average steps/day was +757 steps/day higher in the intervention compared with the comparison group ($p=0.05$, 95% CI -18 to -1531) (table 3).

Sitting time

Sitting time (hours/day) was found to change from 13.1 (2.4) to 12.2 (1.9) at 3 months to 12.2 (2.2) at 12 months within the IG versus a change from 13.7 (1.0) at baseline to 13.6 (1.2) at 3 months to 13.7 (1.4) at 12 months within the CG. Moreover, there was a significantly greater reduction in sitting time (hours/day) in the IG versus CG at both 3 and 12 months, by -1.3 (95% CI -2.2 to -0.6) and -1.5 (95% CI -2.4 to -0.7) hours per day, respectively (table 3).

Weight, BMI, HbA1c, BP, and lipid profile

Table 3 illustrates the lack of any between-group differences in changes in weight, BMI or HbA1c. However, there were significantly greater reductions in the IG compared with CG in SBP by -3.8 (95% CI -6.7 to -0.9) mm Hg ($p=0.008$) at 3 months and -1.8 (95% CI -2.6 to -0.7) mm Hg ($p=0.04$) at 12 months, and in DBP by -1.6

(95% CI -2.6 to -0.7) mm Hg ($p=0.001$) at 12 months. Additionally, a significantly greater reduction in TG levels of -0.3 (95% CI -0.5 to -0.08) mmol/L ($p=0.006$) was observed in the IG versus CG.

Nonetheless, despite no between-group differences in change in weight, BMI and HbA1c, significant within-group differences for median weight ($p\leq 0.001$), BMI ($p\leq 0.001$) and HbA1c ($p=0.03$) were found in the IG between baseline and 12 months.

Adverse events

Except for discomfort from accelerometer use, no adverse events reported by participants were considered to be related to participation in the trial in neither the IG nor the CG.

DISCUSSION

The current study showed that the multicomponent 'MOVEdiabetes' intervention, delivered by trained dietitians, was effective in increasing PA levels in physically inactive adults with T2D within a local diabetes primary care setting at 12 months. The objective accelerometer data also indicated a favorable increase in average number of steps/day in the IG. Similarly, objectively measured sitting time was reduced in the IG by -1.5 hours/day more than in the CG.

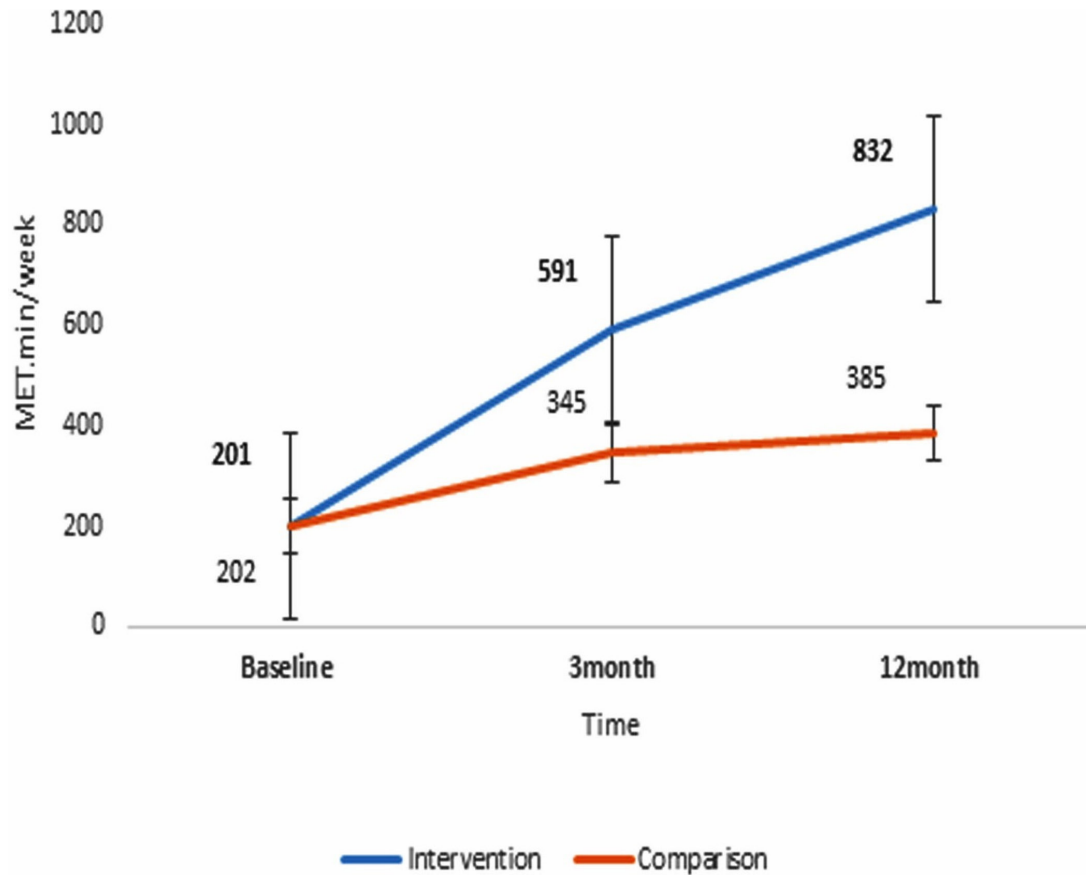


Figure 4 Mean (SE) change in mean physical activity levels (MET.min/week) in the treatment groups over 12 months. MET, Metabolic Equivalent..

Importantly, despite no significant changes in the metabolic outcomes (weight, BMI and HbA1c), the intervention showed favorable cardiovascular long-term outcomes,² namely in reducing systolic and diastolic blood pressure and TGs at 12 months.

Strengths and weaknesses of this study

This study makes a significant contribution to the current limited literature on translational research on effective PA interventions internationally and in particular in the Arab world.⁴

Strengths of the current study demonstrate the ability of existing health professionals, namely dietitians, to extend their roles and deliver the intervention in a relevant clinical setting. Moreover, the use of physiological

data from patients' routine electronic medical records enabled the reporting of clinically relevant data.

This is the first trial to use accelerometers within the local clinical diabetes setting in Oman. Despite the complexity of data from the accelerometers pertaining to dropout and non-compliance to the 24-hour wear protocol, changes in average steps/day and sitting time were in favor of the IG at 12 months. This finding supports the positive effects of the 'MOVEdiabetes' intervention on PA levels in the IG versus CG obtained from the self-reported questionnaire.

It should be noted that the trial sample size was calculated on the basis of detecting changes in the self-reported PA questionnaire, not the accelerometers' data.

Table 4 Odds of meeting PA recommendation at baseline and at 3 and 12 months between the treatment groups

	Baseline (%)			3 months (%)			12 months (%)		
	n (%)	OR	95% CI (p values)	n (%)	OR	95% CI (p values)	n (%)	OR	95% CI (p values)
Intervention	13 (10.7)	1.7	0.6 to 4.6	46 (37.7)	1.8	1.1 to 3.1	52 (42.6)	1.9	1.2 to 3.3
Comparison	7 (6.4)	Ref	(0.3)	28 (25.5)	Ref	(0.04)	31 (28.2)	Ref	(0.02)

PA, physical activity; Ref, reference.

Moreover, despite the fact that the aim of the trial was not to validate the tools, limitations of the self-reported PA data including the possibility of false reporting cannot be excluded.⁴⁰ Hence, further exploration may be required to validate the subjective PA measurement tools (GPAQ), investigate reasons for non-adherence and identify ways to improve compliance to accelerometer use.

Moreover, consistent with the evidence on the dominance of leisure time PA,⁴¹ the results from this study indicated the importance of leisure time activity in the overall increase in PA levels. However, a focus on the other PA domains (work and travel), where inactivity levels are more prominent, may be considered in further studies, especially given that more than half of the participants in both groups were employed. This could include interventions to increase PA and reduce sitting time at workplaces via walk and talk meetings, marked worksite walking paths, standing desks and interrupted screen time programs.⁴²

Strengths and weakness in relation to other studies

The intervention used in this trial included support provided via WhatsApp messages. To our knowledge, this is the first study to integrate such technology-based approach as a long-term support tool within a PA intervention study in Oman. It is possible that this approach could escalate trust between participants and POs in their respected health centers that facilitated sharing of information, and seeking support and feedback when needed.⁴³ However, a study in Spain reported minor effects from WhatsApp-based interventions to promote PA training compared with face-to-face interventions.⁴⁴ These results could be affected by cultural differences or the short study duration (10 weeks) and/or small sample size (n=32) in the latter study. Therefore, further research is needed on the use of WhatsApp and/or any other texting applications in promoting PA in clinical settings (alone and as part of an intervention design).

Notably, similar to other studies, high education⁴⁵ and high income⁴⁶ were associated with the long-term increase in PA levels within the IG. This finding may be linked to greater awareness of health issues and greater purchasing capacity for resources, such as⁴⁶ pedometers, watches, treadmills or gym memberships, which could facilitate positive PA behavior change in higher socioeconomic groups.⁴⁷

It is notable that throughout the study period, sitting time was high (≥ 10 hours/day), exceeding the time reported in other studies in Oman.⁴⁸ This is an important finding because sitting more than 8 hours/day increases the risk of all-cause mortality (even among individuals achieving the recommended 150 min/week of PA).⁴⁹ It is possible that timing of data collection, population characteristics and cultural norms may have been different across those studies that have investigated this relationship. As such, addressing long sitting time patterns is required in further studies.³⁰

The results from this study indicate a relatively small effect size; however, short-term and long-term odds of meeting the PA recommendation of ≥ 600 MET.min/week were significantly higher in the intervention versus comparison group (table 4), indicating potential clinical benefits of the 'MOVEdiabetes' intervention on general health. Other benefits related to body composition were not explored in this study; however, the results showed positive effects of the 'MOVEdiabetes' intervention on lowering blood pressure and TG levels, indicating possible cardioprotective benefits.

The lack of a significant impact on the secondary outcomes, namely weight, BMI and HbA1c, is not unexpected given the intervention focused on PA alone (because usual care already provided advice on diet or weight management). More importantly, this result may be attributed to limited power to detect an intervention effect. Future adequately powered studies are required to better understand the impact of this intervention on secondary outcomes, including the biomedical, metabolic and cardiovascular markers.

Implications of the study for clinicians and policy makers

Given the rising trends of diabetes and physical inactivity in Oman, this study provides a potential and pragmatic platform for recommendations for greater integration of PA in the management of diabetes. The multidisciplinary approach applied in this intervention provided potential solutions for perceived barriers by health professionals on promoting PA, namely lack of time and frequent staff turnover.²⁴ Although dietitians were responsible for delivering the PA consultations, diabetes doctors and nurses were all involved to reinforce the same PA messages to the participants. Moreover, with respect to the PA consultation guidelines reported in the literature,^{19 50 51} the guidelines on the personalized 'MOVEdiabetes' PA consultations within the current study could be further developed for consideration in future similar interventions in the Arab world. Equally important, similar to an online training program for healthcare professionals on PA,⁵²⁻⁵⁴ the PA training linked to this study for the healthcare professionals could be adapted at regional and central health administrative levels to be used in future PA training activities.

Unanswered questions and future research

A process analysis to assess the feasibility, appropriateness and suitability of roll-out of this intervention is yet to be undertaken. Further studies are required to ensure that the increase in PA levels is sustainable. Moreover, although this trial was integrated within routine care, future cost analysis may be required to highlight any additional cost-benefit.

CONCLUSION

The 'MOVEdiabetes' intervention (face-to-face PA consultation delivered by a trained dietitian, with use of pedometers and WhatsApp telephone application for

self-monitoring and support) was effective in increasing short-term and long-term PA, reducing sitting time and increasing the likelihood of meeting the WHO PA recommendations in adults with T2D attending their routine diabetes primary care clinics over 12 months. Additionally, despite no significant impact on weight, BMI and HbA1c, the intervention showed potentially protective cardiovascular effectiveness, namely in reducing blood pressure and TG levels.

Acknowledgements We would like to thank the TRC, Ahmed Al-Qasbi, Director General of Directorate of Planning, and Fatma Al-Ajmi, Director General of Health Services, Muscat in Oman Ministry of Health, for their support and constant supervision. Additionally, special thanks to Adil Al-Wahaibi for his assistance with the study statistics. Finally, many thanks to all POs who participated in the conduct of this study and who showed extraordinary levels of commitment and responsibility over the 12-month study period.

Contributors TSA is the principal investigator in charge of the project. Other authors have all been involved in designing the intervention and evaluation. TSA prepared the initial draft of the manuscript and all other authors have contributed. All authors have critically reviewed and approved the final version of the manuscript.

Funding The Oman Ministry of Health funded this project as part of a PhD grant offered to the corresponding author. Additional funds were provided by The Research Council (TRC) in Oman.

Competing interests None declared.

Patient consent Obtained.

Ethics approval Omani Research and Ethical Review and Approve Committee in the Ministry of Health.

Provenance and peer review Not commissioned; externally peer reviewed.

Data sharing statement Data available on reasonable request and approval from the Oman Ministry of Health.

Open access This is an open access article distributed in accordance with the Creative Commons Attribution Non Commercial (CC BY-NC 4.0) license, which permits others to distribute, remix, adapt, build upon this work non-commercially, and license their derivative works on different terms, provided the original work is properly cited, appropriate credit is given, any changes made indicated, and the use is non-commercial. See: <http://creativecommons.org/licenses/by-nc/4.0/>.

REFERENCES

- International Diabetes Federation. *IDF diabetes atlas*. 6th edn. Belgium: International diabetes Federation, 2011.
- Colberg SR, Sigal RJ, Fernhall B, et al. Exercise and type 2 diabetes: the American college of sports medicine and the American diabetes association: joint position statement. *Diabetes Care* 2010;33:e147–e167.
- Hallal PC, Andersen LB, Bull FC, et al. Global physical activity levels: surveillance progress, pitfalls, and prospects. *Lancet* 2012;380:247–57.
- Matthews L, Kirk A, Macmillan F, et al. Can physical activity interventions for adults with type 2 diabetes be translated into practice settings? a systematic review using the RE-AIM framework. *Transl Behav Med* 2014;4:60–78.
- Colberg SR. Physical activity: the forgotten tool for type 2 diabetes management. *Front Endocrinol* 2012;3:70.
- Church TS, Blair SN, Cocroham S, et al. Effects of aerobic and resistance training on hemoglobin A1c levels in patients with type 2 diabetes: a randomized controlled trial. *JAMA* 2010;304:2253–62.
- American college of sports medicine. *Exercise and type 2 diabetes* 2000:1345–60.
- World Health Organization. *Global physical activity questionnaire (GPAQ) analysis guide: surveillance and population-based prevention, department of chronic diseases and health promotion*. Geneva: World Health Organization, 2014.
- Heath GW, Parra DC, Sarmiento OL, et al. Evidence-based intervention in physical activity: lessons from around the world. *Lancet* 2012;380:272–81.
- Al Riyami A, Elaty MA, Morsi M, et al. Oman world health survey: part 1 - methodology, sociodemographic profile and epidemiology of non-communicable diseases in Oman. *Oman Med J* 2012;27:425–43.
- Sibai AM, Costanian C, Tohme R, et al. Physical activity in adults with and without diabetes: from the 'high-risk' approach to the 'population-based' approach of prevention. *BMC Public Health* 2013;13:1002–02.
- Avery L, Flynn D, Dombrowski SU, et al. Successful behavioural strategies to increase physical activity and improve glucose control in adults with type 2 diabetes. *Diabet Med* 2015;32:1058–62.
- Michie S, Richardson M, Johnston M, et al. The behavior change technique taxonomy (v1) of 93 hierarchically clustered techniques: building an international consensus for the reporting of behavior change interventions. *Ann Behav Med* 2013;46:81–95.
- Michie, 2011. The behaviour change wheel: a new method for characterising and designing behaviour change interventions. Available from: <http://www.implementationscience.com/content/6/1/42>
- Bird EL, Baker G, Mutrie N, et al. Behavior change techniques used to promote walking and cycling: a systematic review. *Health Psychol* 2013;32:829–38.
- Bravata DM, Smith-Spangler C, Sundaram V, et al. Using pedometers to increase physical activity and improve health: a systematic review. *JAMA* 2007;298:2296–304.
- Connelly J, Kirk A, Masthoff J, et al. The use of technology to promote physical activity in type 2 diabetes management: a systematic review. *Diabet Med* 2013;30:1420–32.
- Matthews L, Kirk A, McCallum M, et al. The feasibility of a physical activity intervention for adults within routine diabetes care: a process evaluation. *Practical Diabetes* 2017;34:7–12.
- Kirk AF, Barnett J, Mutrie N. Physical activity consultation for people with type 2 diabetes: evidence and guidelines. *Diabet Med* 2007;24:809–16.
- Lohmann H, Siersma V, Olivarius NF. Fitness consultations in routine care of patients with type 2 diabetes in general practice: an 18-month non-randomised intervention study. *BMC Fam Pract* 2010;11:83.
- Verwey R, van der Weegen S, Spreeuwenberg M, et al. Upgrading physical activity counselling in primary care in the Netherlands. *Health Promot Int* 2016;31:344–54.
- Sallis JF, Cervero RB, Ascher W, et al. An ecological approach to creating active living communities. *Annu Rev Public Health* 2006;27:297–322.
- Alghafri T, Alharthi SM, Al-Farsi YM, et al. Perceived barriers to leisure time physical activity in adults with type 2 diabetes attending primary healthcare in Oman: a cross-sectional survey. *BMJ Open* 2017;7:e016946.
- Alghafri TS, Alharthi SM, Al-Balushi S, et al. Health professionals' perceptions about physical activity promotion in diabetes care within primary health care settings in Oman. *Heliyon* 2017;3:e00495.
- Alghafri TS, Alharthi SM, Al-Farsi Y, et al. Correlates of physical activity and sitting time in adults with type 2 diabetes attending primary health care in Oman. *BMC Public Health* 2017;18:85.
- Alghafri TS, Alharthi SM, Al-Farsi YM, et al. Study protocol for "MOVEdiabetes": a trial to promote physical activity for adults with type 2 diabetes in primary health care in Oman. *BMC Public Health* 2017;17:28.
- Scottish Physical Activity Screening Question, 2013. Scot-PASQ Edinburgh, Scotland. Available from: www.paha.org.uk/Resource/scottish-physical-activity-screening-question-scot-pasq [Accessed 23 Mar 2018].
- Masood M, Reidpath DD. Intraclass correlation and design effect in BMI, physical activity and diet: a cross-sectional study of 56 countries. *BMJ Open* 2016;6:e008173.
- Bull FC, Maslin TS, Armstrong T. Global physical activity questionnaire (GPAQ): nine country reliability and validity study. *J Phys Act Health* 2009;6:790–804.
- Wilmot EG, Davies MJ, Edwardson CL, et al. Rationale and study design for a randomised controlled trial to reduce sedentary time in adults at risk of type 2 diabetes mellitus: project stand (Sedentary Time ANd diabetes). *BMC Public Health* 2011;11:908–08.
- Dowd KP, Harrington DM, Donnelly AE. Criterion and concurrent validity of the activPAL™ professional physical activity monitor in adolescent females. *PLoS One* 2012;7:e47633.
- Marcus BH, Selby VC, Niaura RS, et al. Self-efficacy and the stages of exercise behavior change. *Res Q Exerc Sport* 1992;63:60–6.
- Sallis JF, Grossman RM, Pinski RB, et al. The development of scales to measure social support for diet and exercise behaviors. *Prev Med* 1987;16:825–36.

34. Avery L, Flynn D, Dombrowski SU, *et al.* Successful behavioural strategies to increase physical activity and improve glucose control in adults with Type 2 diabetes. *Diabet Med* 2015;32:1058–62.
35. Tudor-Locke C, Bell RC, Myers AM, *et al.* Controlled outcome evaluation of the first step program: a daily physical activity intervention for individuals with type II diabetes. *Int J Obes Relat Metab Disord* 2004;28:113–9.
36. Alghafri TS. *Unpublished work: Process evaluation of the "MOVEdiabetes" cluster randomized control study to increase physical activity in adults with type 2 diabetes in primary health care.* Oman, 2018.
37. Forbes, 2018. Data analysis using epi infoTM7. Available from: <https://www.studypool.com/discuss/177326/data-analysis-using-epi-infotm7-descriptive-analysis-1> [Accessed 25 May 2018].
38. PAL Technologies. Providing the evidence PAL technologies Ltd. Available from: <http://www.palt.com/> [Accessed 23 Jun 2017].
39. Ministry of Health Oman. *Diabetes management guidelines In: centre E.* edn. Oman: MOH, 2015.
40. Dyrstad SM, Hansen BH, Holme IM, *et al.* Comparison of self-reported versus accelerometer-measured physical activity. *Med Sci Sports Exerc* 2014;46:99–106.
41. Arem H, Moore SC, Patel A, *et al.* Leisure time physical activity and mortality: a detailed pooled analysis of the dose-response relationship. *JAMA Intern Med* 2015;175:959–67.
42. Chau JY, der Ploeg HP, van Uffelen JG, *et al.* Are workplace interventions to reduce sitting effective? a systematic review. *Prev Med* 2010;51:352–6.
43. Abdulhadi N, Al Shafae M, Freudenthal S, *et al.* Patient-provider interaction from the perspectives of type 2 diabetes patients in Muscat, Oman: a qualitative study. *BMC Health Serv Res* 2007;7:162.
44. Muntaner-Mas A, Vidal-Conti J, Borràs PA, *et al.* Effects of a Whatsapp-delivered physical activity intervention to enhance health-related physical fitness components and cardiovascular disease risk factors in older adults. *J Sports Med Phys Fitness* 2017;57:90–102.
45. Heiss V, Petosa R. Correlates of physical activity among adults with types of physical activity among adults with type 2 diabetes: a systematic literature review diabetes: a systematic literature review. *Am J Health Educ* 2014;45:278–87.
46. Bauman AE, Reis RS, Sallis JF, *et al.* Correlates of physical activity: why are some people physically active and others not? *Lancet* 2012;380:258–71.
47. Kari JT, Pehkonen J, Hirvensalo M, *et al.* Income and physical activity among adults: evidence from self-reported and pedometer-based physical activity measurements. *PLoS One* 2015;10:e0135651.
48. Mabry RM, Winkler EA, Reeves MM, *et al.* Correlates of Omani adults' physical inactivity and sitting time. *Public Health Nutr* 2013;16:65–72.
49. Bell JA, Hamer M, Batty GD, *et al.* Combined effect of physical activity and leisure time sitting on long-term risk of incident obesity and metabolic risk factor clustering. *Diabetologia* 2014;57:2048–56.
50. Tremblay MS, Warburton DE, Janssen I, *et al.* New Canadian physical activity guidelines. *Appl Physiol Nutr Metab* 2011;36:36–46.
51. Colberg SR, Albright AL, Blissmer BJ, *et al.* Exercise and type 2 diabetes: american college of sports medicine and the american diabetes association: joint position statement. Exercise and type 2 diabetes. *Med Sci Sports Exerc* 2010;42:2282–303.
52. Avery L, Sniehotta FF, Denton SJ, *et al.* Movement as Medicine for Type 2 Diabetes: protocol for an open pilot study and external pilot clustered randomised controlled trial to assess acceptability, feasibility and fidelity of a multifaceted behavioural intervention targeting physical activity in primary care. *Trials* 2014;15:46.
53. Avery L, Charman SJ, Taylor L, *et al.* Systematic development of a theory-informed multifaceted behavioural intervention to increase physical activity of adults with type 2 diabetes in routine primary care: movement as medicine for type 2 diabetes. *Implement Sci* 2016;11:99.
54. Soegtrop R, Douglas-Vail M, Bechamp T, *et al.* Physical activity prescription by canadian emergency medicine physicians. *Appl Physiol Nutr Metab* 2018;43:861–4.