



**University of Dundee**

**The genomic landscape of cutaneous SCC reveals drivers and a novel azathioprine associated mutational signature**

Inman, Gareth J.; Wang, Jun; Nagano, Ai; Alexandrov, Ludmil B.; Purdie, Karin J.; Taylor, Richard G.; Sherwood, Victoria; Thomson, Jason; Hogan, Sarah; Spender, Lindsay C.; South, Andrew P.; Stratton, Michael; Chelala, Claude; Harwood, Catherine A.; Proby, Charlotte M.; Leigh, Irene M.

*Published in:*  
Nature Communications

*DOI:*  
[10.1038/s41467-018-06027-1](https://doi.org/10.1038/s41467-018-06027-1)

*Publication date:*  
2018

*Document Version*  
Publisher's PDF, also known as Version of record

[Link to publication in Discovery Research Portal](#)

*Citation for published version (APA):*

Inman, G. J., Wang, J., Nagano, A., Alexandrov, L. B., Purdie, K. J., Taylor, R. G., ... Leigh, I. M. (2018). The genomic landscape of cutaneous SCC reveals drivers and a novel azathioprine associated mutational signature. *Nature Communications*, 9(1), 1-14. [3667]. <https://doi.org/10.1038/s41467-018-06027-1>

**General rights**

Copyright and moral rights for the publications made accessible in Discovery Research Portal are retained by the authors and/or other copyright owners and it is a condition of accessing publications that users recognise and abide by the legal requirements associated with these rights.

- Users may download and print one copy of any publication from Discovery Research Portal for the purpose of private study or research.
- You may not further distribute the material or use it for any profit-making activity or commercial gain.
- You may freely distribute the URL identifying the publication in the public portal.

ARTICLE

DOI: 10.1038/s41467-018-06027-1

OPEN

# The genomic landscape of cutaneous SCC reveals drivers and a novel azathioprine associated mutational signature

Gareth J. Inman<sup>1</sup>, Jun Wang<sup>2</sup>, Ai Nagano<sup>2</sup>, Ludmil B. Alexandrov<sup>3</sup>, Karin J. Purdie<sup>4</sup>, Richard G. Taylor<sup>1</sup>, Victoria Sherwood<sup>1</sup>, Jason Thomson<sup>4</sup>, Sarah Hogan<sup>4</sup>, Lindsay C. Spender<sup>1</sup>, Andrew P. South<sup>5</sup>, Michael Stratton<sup>6</sup>, Claude Chelala<sup>2</sup>, Catherine A. Harwood<sup>4</sup>, Charlotte M. Proby<sup>1</sup> & Irene M. Leigh<sup>1</sup>

Cutaneous squamous cell carcinoma (cSCC) has a high tumour mutational burden (50 mutations per megabase DNA pair). Here, we combine whole-exome analyses from 40 primary cSCC tumours, comprising 20 well-differentiated and 20 moderately/poorly differentiated tumours, with accompanying clinical data from a longitudinal study of immunosuppressed and immunocompetent patients and integrate this analysis with independent gene expression studies. We identify commonly mutated genes, copy number changes and altered pathways and processes. Comparisons with tumour differentiation status suggest events which may drive disease progression. Mutational signature analysis reveals the presence of a novel signature (signature 32), whose incidence correlates with chronic exposure to the immunosuppressive drug azathioprine. Characterisation of a panel of 15 cSCC tumour-derived cell lines reveals that they accurately reflect the mutational signatures and genomic alterations of primary tumours and provide a valuable resource for the validation of tumour drivers and therapeutic targets.

<sup>1</sup>Division of Cancer Research, Jacqui Wood Cancer Centre, School of Medicine, University of Dundee, Dundee DD1 9SY, UK. <sup>2</sup>Centre for Molecular Oncology, Barts Cancer Institute, Queen Mary University of London, London EC1M 6BQ, UK. <sup>3</sup>Department of Cellular and Molecular Medicine and Department of Bioengineering and Moores Cancer Center, University of California, San Diego, La Jolla, CA 92093, USA. <sup>4</sup>Centre for Cell Biology and Cutaneous Research, Barts and the London School of Medicine and Dentistry, Queen Mary University of London, London E1 2AT, UK. <sup>5</sup>Department of Dermatology and Cutaneous Biology, Thomas Jefferson University, Philadelphia, PA 19107, USA. <sup>6</sup>Cancer Genome Project, Wellcome Trust Sanger Institute, Hinxton CB10 1SA, UK. These authors contributed equally: Gareth J. Inman, Jun Wang, Ai Nagano, Catherine A. Harwood, Charlotte M. Proby, Irene M. Leigh. Correspondence and requests for materials should be addressed to G.J.I. (email: [g.j.inman@dundee.ac.uk](mailto:g.j.inman@dundee.ac.uk)) or to J.W. (email: [j.a.wang@qmul.ac.uk](mailto:j.a.wang@qmul.ac.uk)) or to I.M.L. (email: [i.m.leigh@dundee.ac.uk](mailto:i.m.leigh@dundee.ac.uk))

The incidence of keratinocyte skin cancers in fair skinned populations currently exceeds that of all other cancers combined and is increasing year on year in our ageing population. More than one million new cases of cutaneous squamous cell carcinoma (cSCC) are diagnosed annually in the US, with significant health economic implications<sup>1</sup>. In contrast to most other epithelial malignancies, more than a third of patients develop multiple primary cSCC. This is especially true in immunosuppressed individuals with evidence in organ transplant recipients (OTR) of a more than 100-fold increased risk of developing cSCC<sup>2</sup>. Although many cSCC are effectively treated with surgery or radiotherapy, morbidity is significant, particularly as tumours frequently occur on cosmetically sensitive sites. Metastasis occurs in ~5% of cases and cSCC is responsible for approximately one-quarter of skin cancer-related deaths and estimates for annual mortality are similar to those for melanoma in parts of the USA<sup>3</sup>. There are few effective treatments for advanced cSCC, with five-year survival of less than 30% reported for metastatic disease<sup>4</sup>.

Cutaneous SCC is poorly understood at a molecular level and the drivers of disease progression have not been fully elucidated. Whole-exome sequencing (WES) has revealed a high mutation rate with on average 50 mutations per megabase pair DNA<sup>5</sup>. Additionally, gross chromosomal aberrations and numerous copy number alterations (CNA) indicative of genetic instability create a complex molecular landscape. Epidemiological and clinical evidence supports cumulative life time exposure to ultraviolet radiation (UVR) as the principle environmental carcinogen responsible for cSCC and the majority of mutations found in cSCC contain a 'UV signature'. Our understanding of the genomic landscape of cSCC is further complicated by keratinocyte clones in apparently normal sun-exposed skin<sup>6</sup> bearing mutations in cSCC tumour suppressor genes (TSGs) such as *NOTCH1/2* and *TP53*<sup>5,7–10</sup>. There is evidence that the mutational profile of cSCC harbours similarities to those of other epithelial tumours, including head and neck, lung and oesophageal SCCs (reviewed in ref. <sup>11</sup>) and the squamous subtype of pancreatic SCC<sup>12</sup>, but comparisons are limited by small cSCC data sets.

Analyses of the patterns of mutations in cancer genomes has revealed the presence of distinct 'mutational signatures'<sup>13,14</sup>. They are described using a simple classification based on the six classes of single base mutations in combination with the base 5' and 3' to each mutation and characteristic UVR-induced C>T mutations at pyrimidines appear to predominate in all cSCC studies to date (COSMIC signature 7).

Here, we perform WES of 40 primary cSCC from both immunosuppressed (IS) and immunocompetent (IC) patients classified according to histological differentiation status (well-differentiated vs. moderately/poorly differentiated categories). We have taken an integrated bioinformatics approach with the intention of identifying a limited number of actionable pathways onto which this multiplicity of genetic events will converge. In addition to mutational, chromosomal and clonality analyses, a mutational signature analysis has been performed, revealing a novel mutational signature associated with patients who have been exposed to the immunosuppressive agent, azathioprine.

Furthermore, we describe the molecular characterisation of 15 primary cSCC cell lines. These reflect the mutational signatures, mutational and genomic alteration profiles and gene expression changes of primary tumours and provide a resource for investigating the contribution of genes, pathways, and processes for cSCC progression.

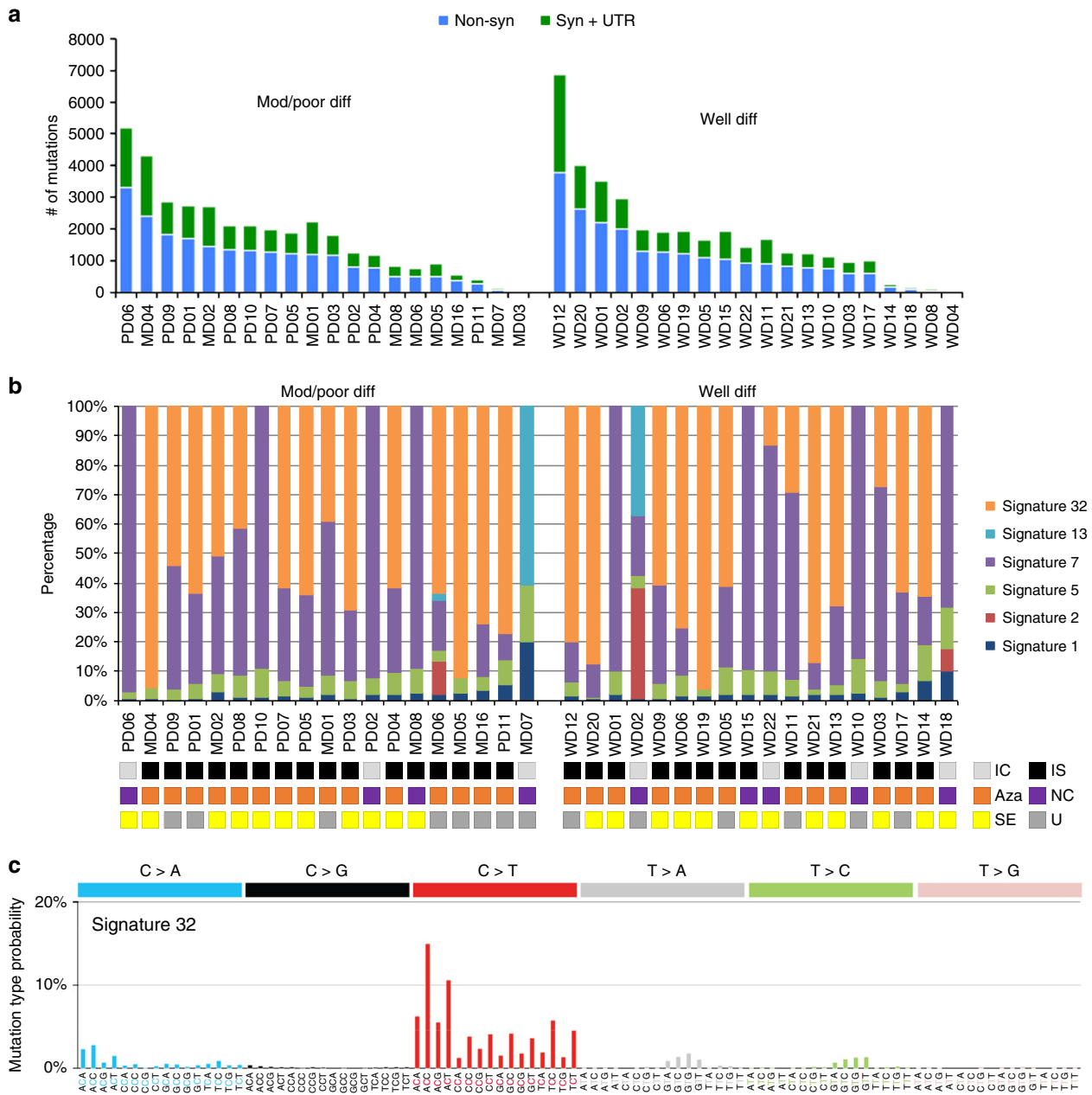
## Results

**Mutational burden and signatures.** Forty cSCC samples from 37 patients (Supplementary Data 1) were analysed/reanalysed by

WES (including 30 previously described)<sup>5,15</sup>. Twenty-nine patients were organ transplant recipients receiving immunosuppressive drugs and one was immunosuppressed for Crohn's disease. This sample set contained equal numbers of well-differentiated (WD) vs. poorly/moderately differentiated (MD/PD) tumours (20 samples each). WES coverage averaged  $54.3 \times$  (range 25.8–79.1 $\times$ ) with 91% of bases covered  $> 10 \times$  (range 73.5–97.8%) and 81.4%  $> 20 \times$  (range 47.2–93%) (Supplementary Data 2). We identified 71,242 somatic mutations in the tumours (Supplementary Data 3). The number of nonsynonymous and synonymous mutations varied across each group averaging 1795 somatic variants in WD (range 23–6867) and 1793 somatic variants in MD/PD (range 13–5188) (Fig. 1a and Supplementary Data 3). Computational analysis of patterns of somatic mutations<sup>13</sup> has enabled the identification of 30 distinct mutational signatures from more than 12,000 samples from a wide range of cancer types<sup>14,16,17</sup> (for a complete set of currently known signatures see <http://cancer.sanger.ac.uk/cosmic/signatures>). Many of these signatures have been attributed to environmental exposure to mutagens<sup>14,16–18</sup>. Mutational signature analysis was performed on 37/40 of the cSCC whole-exome sequences (Fig. 1b and Supplementary Data 4). Signature 7 was observed in 33 samples (Fig. 1b), which reflected the C>T mutations of dipyrimidines and has previously been described as a 'UVR signature'<sup>14</sup> (Supplementary Fig. 1B). Twenty-one of these UVR signature positive tumours were from confirmed sun exposed sites (Fig. 1b; head and neck, wrist and hand, Supplementary Data 1) and the remaining 12 were from sites which included the leg, chest, shoulder and back, which may also have been sun exposed (Supplementary Data 1). MD07, which displays no evidence of UVR exposure, was isolated from the foot of the patient and was, therefore, unlikely to be sun exposed (Fig. 1b and Supplementary Data 1, 4).

A previously undescribed mutational signature, termed signature 32 here-after, was found in 27 samples from both the WD and MD/PD tumours (Fig. 1b, orange bars). It is predominately C>T mutations (75%) in combination with C>A, T>A, and T>C mutations (Fig. 1c). There seems to be a clear presence for C>X at ApCpN and T>X at GpTpN. This novel mutational signature exhibits a very strong transcriptional strand bias potentially indicating an interplay with transcription coupled nucleotide excision repair (TC-NER) due to adducts on guanine and adenine (Supplementary Fig. 1A). The pattern of signature 32 is distinct from any of the previously known COSMIC mutational signatures, including signatures that have a pattern of mutations with predominately C>T transitions such as signature 7. Only two of the COSMIC mutational signatures exhibit a correlation  $> 0.5$  between their respective patterns and that of signature 32. The pattern of signature 30 (attributed to mutations in the base excision repair gene *NTHL1*<sup>19</sup>) has a correlation of 0.58 with signature 32 and that of signature 11 (attributed to exposure to alkylating agents<sup>13,14</sup>) has a correlation of 0.65 with signature 32. These correlations are lower than those of other distinct COSMIC signatures, for example COSMIC signatures 1 and 6 have a correlation of 0.81<sup>13,14</sup>. Further, signatures 11 and 30 do not exhibit the same transcriptional strand bias as signature 32. Thus, signature 32 is an entirely novel mutational signature.

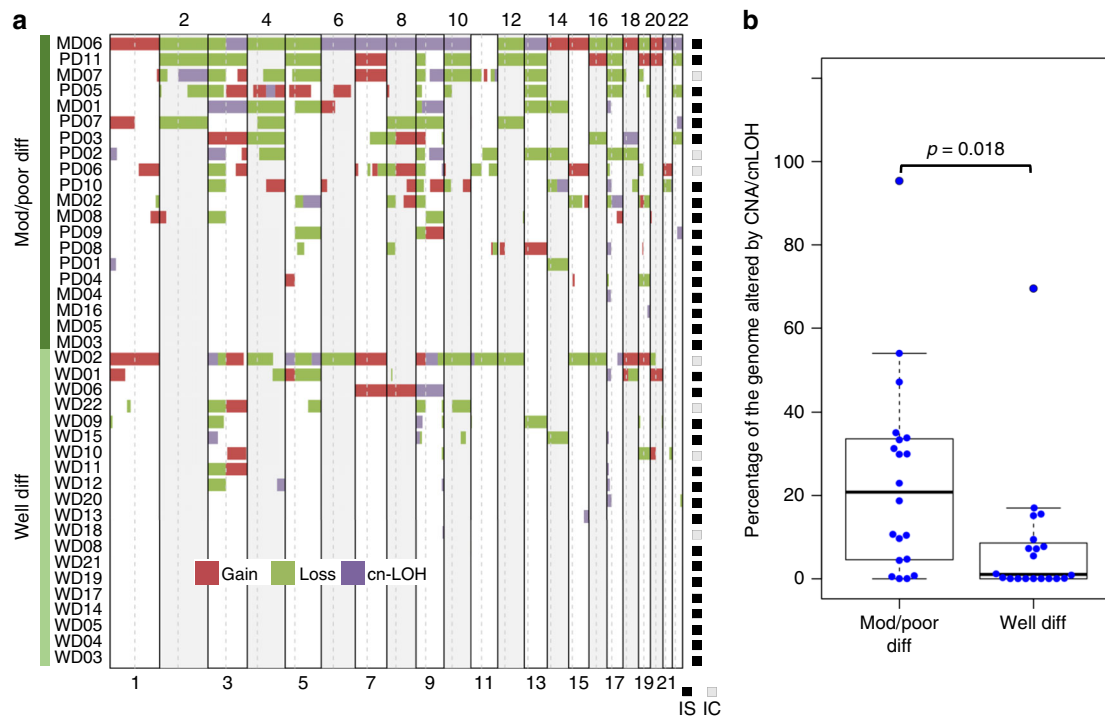
Signature 32 was prominent in many of the samples from immunosuppressed patients (Fig. 1b) indicating a potential association with exposure to immunosuppressant drugs. Most immunosuppressed patients received azathioprine (Fig. 1b) although this was usually part of a complex regimen involving at least one other immunosuppressive drug (Supplementary Data 1). However, three of the tumours with signature 32 were from patients who had received azathioprine alone (MD02,



**Fig. 1** Number of somatic mutations and mutation signatures across 40 cSCC samples in the moderate/poor and well-differentiated groups. **a** Number of nonsynonymous, synonymous and UTR mutations across 40 samples. **b** Mutation signature compositions across 37 of the 40 samples with sufficient mutation depth, in terms of moderate/poor and well-differentiated groups. IC immunocompetent, IS immunosuppressed, Aza confirmed azathioprine exposure, NC no confirmed azathioprine exposure, SE sun exposed site, U unknown if sun exposed site. **c** A novel signature, termed signature 32, predominately C > T mutations (75%) in combination with C > A, T > A, and T > C mutations, was identified as one of the dominant signatures. This signature is putatively associated with azathioprine treatment

PD01, WD03) and both tumours analysed from immunosuppressed patients whom had not received azathioprine (MD08, WD15) did not exhibit mutational signature 32 (Fig. 1b and Supplementary Data 1, 4). There is a significant association only between a confirmed history of azathioprine exposure and the presence of signature 32 (Fisher’s exact test,  $p < 0.0001$ ; Supplementary Fig. 2a) and not exposure to the other immunosuppressant drugs (Supplementary Fig. 2a). We did not identify any other significant associations between any of the mutational signatures and exposure to any of the immunosuppressant drugs (Supplementary Fig. 2b). Furthermore, analysis of

treatment times revealed a strong positive correlation with the estimated time of azathioprine exposure and the prevalence of signature 32 (Spearman’s rank order correlation  $r_s(26) = 0.679$ ,  $p < 0.0001$ , Supplementary Fig. 3). Taken together these findings indicate that chronic exposure to azathioprine correlates with the presence of mutational signature 32. All tumours contained lower levels of signatures 1 and 5, which are found in most cancers and are attributed to so called ‘clock-like’ mutational processes<sup>20</sup> (Fig. 1b and Supplementary Data 4). Four tumour samples also contained mutational signature contributions from Signatures 2 and 13 (MD06, MD07, WD02 and WD18; Fig. 1b



**Fig. 2** Somatic copy number aberrations (SCNA) and LOH events in 40 cSCC samples. **a** OncoPrint of copy gain, loss and copy-neutral (CN)-LOH segments across moderate/poor and well-differentiated groups. IS immunosuppressed, IC immunocompetent. **b** Box-and whisker plot indicating the percentage of the genome altered by CNA/LOH across the two groups. Individual values were shown by the blue dots. Moderate/poor differentiated group had significantly higher percentage of altered genome than well-differentiated group (Student's *t*-test, two sided,  $p = 0.018$ )

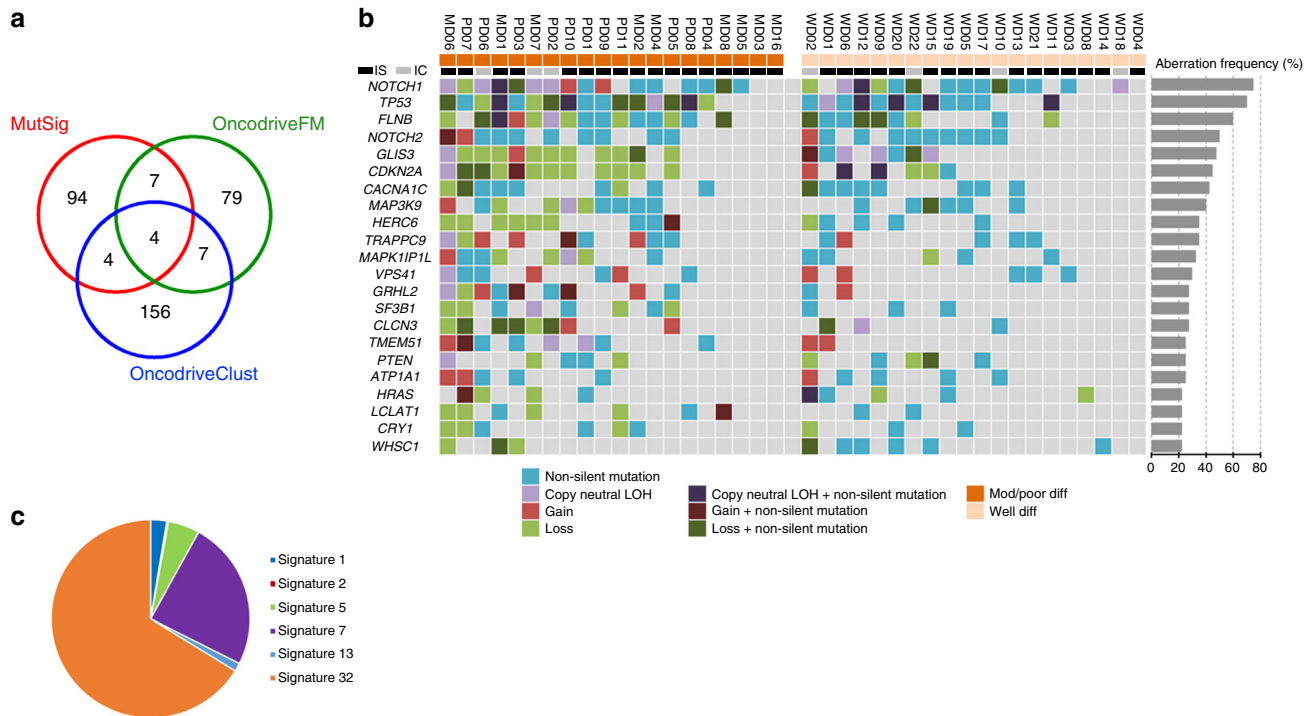
and Supplementary Data 4), which are attributed to the activity of the AID/APOBEC family of cytidine deaminases converting cytosine to uracil<sup>14</sup>.

**Somatic copy number aberrations.** Somatic copy number aberrations (CNA) and loss of heterozygosity (LOH) events were identified across WD and MD/PD samples (Supplementary Data 5), with MD/PD samples having more large-scale genomic events than WD samples (Fig. 2a, b). 62.5% of the samples (25/40) had detectable copy number variations (CNVs) in at least 2 regions, which is consistent with previous observations<sup>21–24</sup> with a significant positive correlation with previous studies for top frequent CNAs (Supplementary Fig. 4, Pearson's correlation  $r = 0.37$ ,  $p = 0.015$ ). GISTIC<sup>25</sup> analysis further identified significantly amplified and deleted regions ( $q < 0.1$ , Supplementary Data 6), including amplifications at 3q26, 5q22, 7q21, 11q22 and 15q11, and deletions at 3p12, 5q13 and 9q21. Amplifications at 3q<sup>21–24</sup>, 5q<sup>21</sup>, 7q<sup>24</sup>, and copy losses at 3p<sup>21–24</sup> and 5q<sup>24</sup> have also previously reported. Frequent gain of 9q and loss of 9p are also observed in this and previous studies of cSCC (Supplementary Data 7).

**Significantly mutated genes (SMGs) in cSCC.** We employed three statistical mutational significance methods; MutsigCV<sup>26</sup> (significance cutoff  $p < 0.05$ , Supplementary Data 8), Oncodrive-FM<sup>27</sup> (significance cutoff  $q < 0.05$ , Supplementary Data 9) and Oncodrive-CLUST<sup>28</sup> (significance cutoff  $q < 0.05$ , Supplementary Data 10). These identified 109, 97 and 171 SMGs respectively totalling 351 unique genes (Fig. 3a and Supplementary Data 8–10). We identified 22 SMGs by at least two methods (Fig. 3a, b). This revealed recurrent mutations in a number of genes previously implicated in human cSCC including *NOTCH1/2*, *TP53*

and *CDKN2A* (Fig. 3b and Supplementary Data 11, 12, Supplementary Fig. 5). The frequency and statistical significance of these potential driver genes are consistent with previous exome<sup>10</sup> and targeted sequencing studies<sup>9</sup> (Supplementary Data 13).

Additional SMGs included *HRAS*, *MAP3K9*, *PTEN*, *SF3B1*, *VPS41* and *WHSC1* (Fig. 3b, Supplementary Fig. 6 and Supplementary Data 14) all of which have known genetic alterations in human malignancies<sup>29–38</sup>. We identified oncogenic activating mutations in *HRAS* in three tumours (Fig. 3b and Supplementary Fig. 6), which have previously been identified in 3–20% of cSCC<sup>9,10</sup> (Supplementary Data 13) and keratoacanthomas (reviewed in ref. 4). Of note, 10% of the samples exhibit copy number loss of *HRAS* (Fig. 3b), which has been observed by others<sup>9</sup>, warranting a need for better understanding of the role of *HRAS* in cSCC. *PTEN* alterations have been previously described in cSCC<sup>9</sup> (Supplementary Data 13), but the other SMGs including *FLNB*, *GLIS3*, *CACNA1C*, *HERC6*, *TRAPPC9*, *MAPK1P1L* (Fig. 3b, Supplementary Fig. 7 and Supplementary Data 15), *GRHL2*, *CLCN3*, *TMEM51*, *ATP1A1*, *LCLAT1* and *CRY1* (Fig. 3b, Supplementary Fig. 8 and Supplementary Data 16) are of unknown significance in cancer and present with no obvious hotspot mutations. Non-silent mutations in a few of these SMGs have also been observed in cSCC<sup>10</sup> (Supplementary Data 13). Comparison of the frequency of alterations in the 22 SMGs between tumours isolated from immunosuppressed and immunocompetent patients revealed no significant difference in mutation frequencies indicating that tumours that arise in these patient groups have common drivers (Fig. 3b and Supplementary Data 17). Next, we assessed the probability for each mutational somatic substitution in the 22 SMGs to be caused by each of the operative mutational signatures. Overall the majority of the SMG gene mutations are caused by azathioprine signature 32 (66.2%); 24.4% are due to UVR driven signature 7; 7.8% are caused by



**Fig. 3** Twenty-two SMGs identified in 40 cSCC samples. **a** Venn diagram of overlap of significantly mutated genes as assessed by MutSigCV, OncodriveFM and OncodriveClust. **b** Mutation OncoPrint of the 22 SMGs identified by at least two of the three methods, with their aberrational frequencies also indicated with percentage bars. IS immunosuppressed, IC immunocompetent. **c** Pie chart of the mutational signature contribution to SMG mutations

clock-like mutational signatures<sup>20</sup> (signatures 1 and 5) and the remaining 1.7% by APOBEC related signatures 2 and 13, suggesting the driving mutational processes responsible for the initiation and progression of the tumours in our sample set are due to a combination of UVR and azathioprine exposure (Fig. 3c and Supplementary Data 18).

**Inference of clonal evolution and order of genetic changes.**

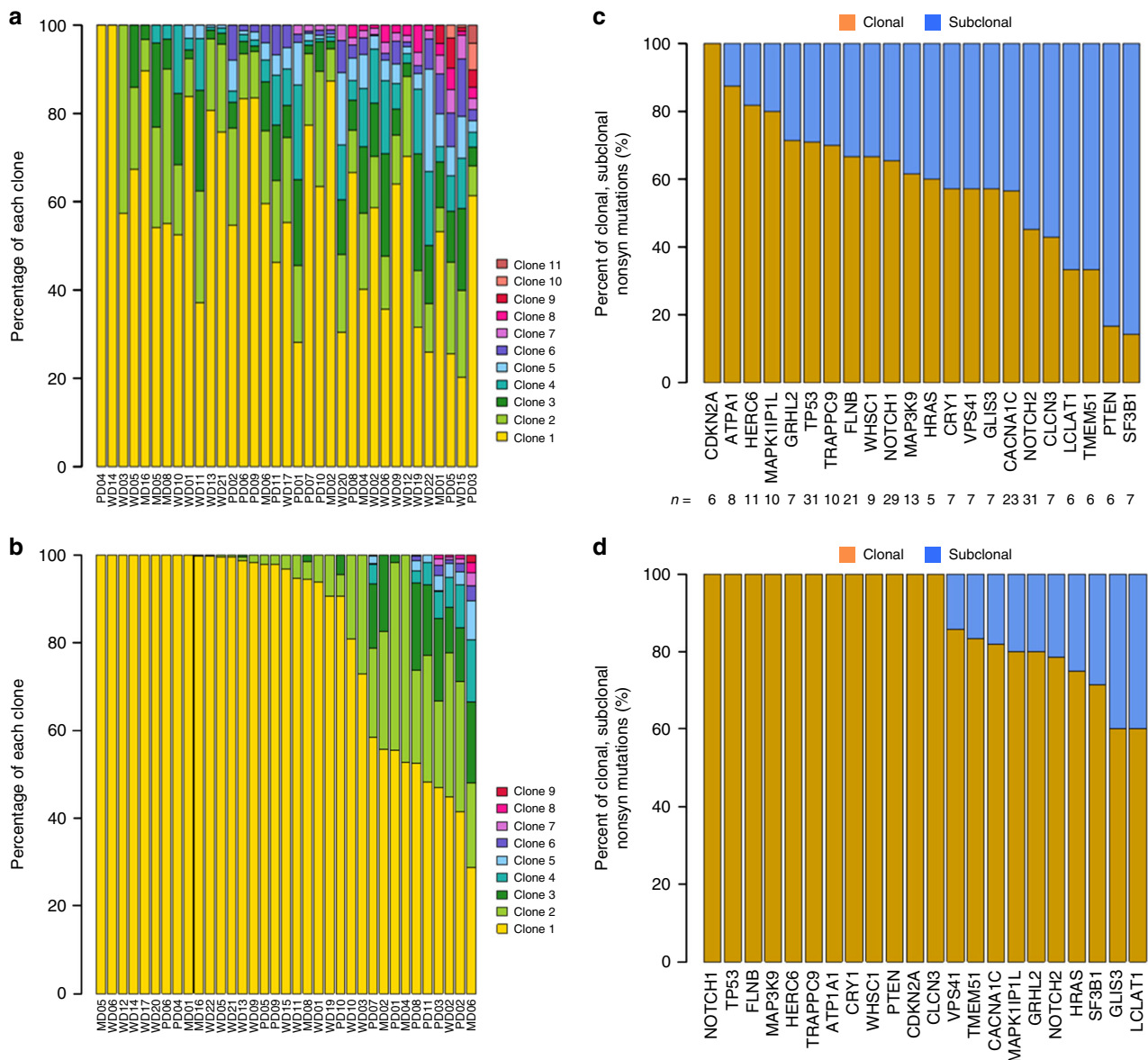
Next, we performed clonal analysis, integrating somatic mutations (SNVs and indels) and CNAs using EXPANDS<sup>39</sup>, and SciClone<sup>40</sup> which have been used to infer patterns of clonal evolution<sup>41,42</sup>. In 35 of 40 cSCC, WES data were sufficient for the identification of dominant clone and nested subpopulations in each sample, thus allowing for the differentiation between clonal and subclonal mutations. EXPANDS and SciClone had concordant estimates of tumour purity (Supplementary Fig. 9, Pearson’s correlation  $r = 0.9$ ,  $p = 3.42e-13$ , Supplementary Data 19). There was no correlation between the number of somatic mutations identified in our samples and tumour purity (Pearson’s correlation  $r = 0.10$ ,  $p = 0.57$ ). Clonality analysis showed tumour heterogeneity across our samples, varying from 1 to 11 clones as estimated by EXPANDS (Fig. 4a) and 1 to 9 clones as estimated by SciClone (Fig. 4b) with some correlation in the number of clusters estimated by the two methods (Supplementary Fig. 10). 26/35 (74%) had at least two clones, 10/35 (29%) had at least three clones and 7/35 (20%) had at least five clones identified by both programmes (Fig. 4a, b and Supplementary Data 20) indicating a high degree of heterogeneity in cSCC.

For the 22 SMGs, we assessed the order of driver mutation acquisition inferred from the aggregate frequencies at which they were found to be clonal or subclonal<sup>43</sup>. We characterised the clonal and subclonal features of the nonsynonymous mutations for these 22 genes with 74% of all clonal mutations

called by EXPANDS also identified as clonal by SciClone (Supplementary Fig. 10). Over 70% of mutations in *CDKN2A*, *ATP1A1*, *HERC6*, *MAPK11P1L*, *GRHL2* and *TP53* were clonal using both methods implying alterations in these genes tended to arise earlier during cSCC development (Fig. 4c, d). Rank order of clonality similarly indicated that mutations in these genes and also those in *NOTCH1*, *TRAPPC9*, *FLNB* and *MAP3K9* may also be early events, whereas mutations in *HRAS*, *VPS41*, *GLIS3*, *CACNA1C*, *NOTCH2*, *CLCN3*, *LCLAT1*, *TMEM51* and *SF3B1* appeared to accumulate a higher proportion of subclonal nonsynonymous mutations (Fig. 4c, d and Supplementary Data 21), indicating that lesions in these genes are more likely to occur later.

**Integration of genomic drivers and gene expression profiles.**

To investigate potential tumour suppressor or tumour promoter roles of our 22 SMGs and genes encoded within areas of significant CNAs, we analysed gene expression profiles (GEP) in five independent data sets comprising samples from normal skin, actinic keratoses (AK) and SCC. These included GSE45216<sup>44</sup> coupled with additional samples described here as Data set 1 (Supplementary Data 22), GSE42677<sup>45</sup>, GSE2503<sup>46</sup>, GSE84293<sup>7</sup> and GSE32628<sup>21</sup>. *GLIS3* and *LCLAT1* were determined to have a low level of expression in normal and/or lesional skin across samples and were excluded from this analysis (see Methods). The remaining 20 SMGs were clearly separated into two clusters in GSE42677 (Fig. 5a). One cluster was highly expressed in normal skin and became downregulated in AK and SCC, and the other cluster demonstrated the opposite trend (Fig. 5a). The down- and upregulated patterns for these genes were largely consistent between the five data sets (Fig. 5b). Among them, *TP53* and *NOTCH2* were downregulated in SCC compared to normal skin, while seven genes *HERC6*, *CDKN2A*, *FLNB*, *MAP3K9*, *TMEM51*, *MAPK11P1L* and *WHSC1* were upregulated in SCC relative to

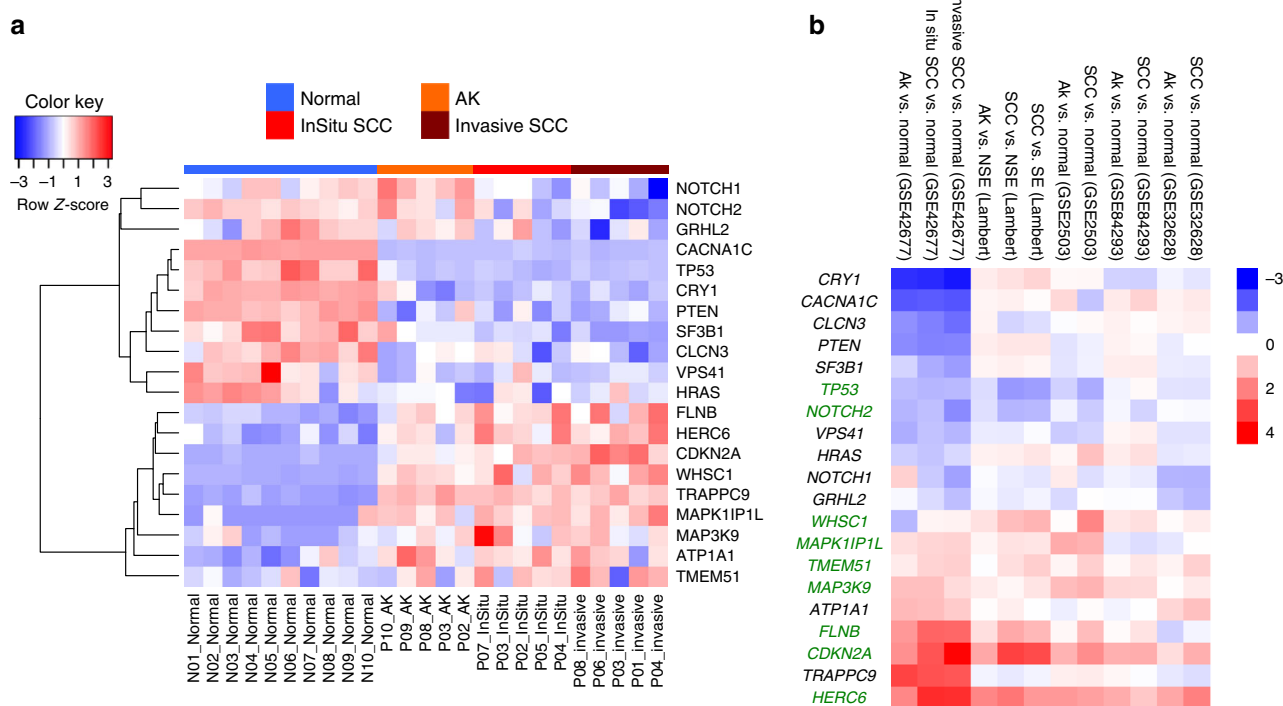


**Fig. 4** Clonality analysis of cSCC tumour samples. Clonality analysis of 35 cSCC exomes using EXPANDS (**a**) and SciClone (**b**). Clonality analysis of 22 SMGs identifying clonal and subclonal nonsynonymous mutations using EXPANDS (**c**) and SciClone (**d**). The number of nonsynonymous mutations in each gene was also shown

normal skin in at least 3 out of 5 data sets (Fig. 5b) suggesting respective potential tumour suppressing and tumour promoting roles in cSCC development.

Within the amplified regions identified by GISTIC analysis, the mRNA levels of 23 genes were upregulated in cSCC compared to normal skin in GSE42677 (Fig. 6a), 38 in Data Set 1, 78 in GSE32628, 7 in GSE2503 and 43 in GSE84293 (Fig. 6b, top Venn diagram). Overlap analysis revealed that 19 genes were encoded in amplified regions and upregulated at the mRNA level in at least three of these data sets (Fig. 6b, c) indicating that these genes may play tumour promoting roles in cSCC. Nine genes within deleted regions identified by GISTIC analysis were also downregulated at the mRNA level in cSCC compared to normal skin in GSE42677 (Fig. 6a), 11 in Data set 1, 24 in GSE32628, 2 in GSE2503 and 5 in GSE84293 (Fig. 6b, bottom Venn diagram). Overlap analysis revealed that five genes were encoded in deleted regions and downregulated at the mRNA level in at least three of these data sets (Fig. 6b, c) indicating that these genes may play tumour suppressor roles in cSCC.

**Identification of WD and MD/PD group-specific SMGs.** Differentiation status is a prognostic marker in cSCC (reviewed in ref. 4). We developed a randomisation test strategy to identify WD and MD/PD group-specific SMGs based on the MutSigCV and OncodriveFM significance  $p$ -values (see Methods, Fig. 7a), and further selected those group-specific genes that were also regarded as expressed in the GEP data sets. This led to 16 MD/PD-specific and 6 WD-specific SMGs, respectively (Fig. 7b). The MD/PD-specific genes included *TMEM51* and *GRHL2* previously identified in the analysis of the whole 40 exomes but also identified additional MD/PD-specific genes *ZZEF1*, *GMD5*, *NEDD4L*, *LRP1*, *PRB1*, *HECTD4*, *SOS2*, *ICAM1*, *VWF*, *ACVR2A*, *POLH*, *CNDP2*, *RPLP1* and *PRMT3*. Their significance has yet to be described in cSCC although non-silent mutations in some of these genes have been observed in cSCC<sup>10</sup> (Supplementary Data 23). Interestingly, the expression of *ACVR2A* appeared to decline gradually with the disease progression, with the highest level of expression in the normal skin and the lowest in SCCs in all five GEP data sets (Supplementary Fig. 11), suggesting its



**Fig. 5** Expression profiles of driver genes in five independent gene expression data sets. **a** Expression heatmap of 20 SMGs that were also expressed across normal, AK, in situ and invasive SCC samples from GSE42677. **b** Log<sub>2</sub> fold changes (FC) of AK vs. normal and SCC vs. normal of 20 SMGs from GSE42677, Data set 1 (Lambert), GSE2503, GSE84293 and GSE32628. Normal normal skin, NSE non-sun exposed normal skin, SE Sun exposed skin, AK actinic keratosis. Significant genes in 3 out of 5 data sets were highlighted in green. Within the heatmap, red colour indicates the upregulation in AK or SCC compared to normal control, which blue colour indicates the downregulation in AK or SCC in relation to normal skin

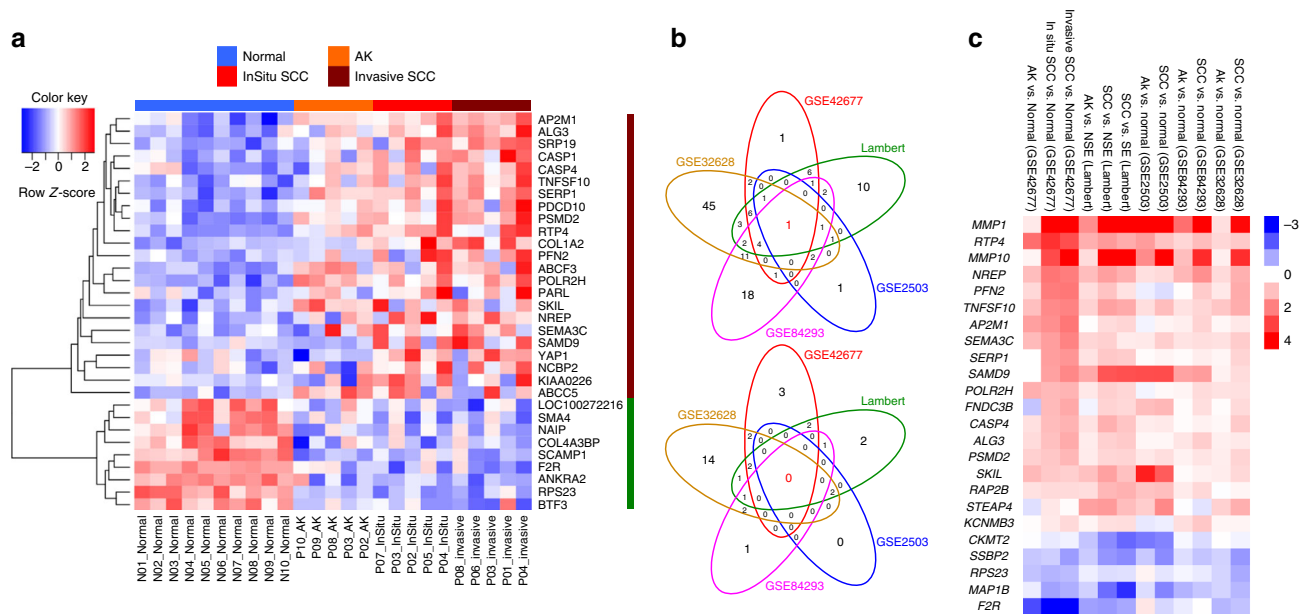
potential tumour suppressing role in disease progression. The WD-specific genes included the previously identified *ATP1A1* and additionally *SULF1*, *ZNF528*, *NRCAM*, *FAT1* and *SEMA5A*. *FAT1* has been identified as a significantly mutated putative driver gene in cSCC<sup>6,10</sup> and in normal sun exposed skin<sup>6</sup>. None of these other WD-specific genes have been associated with cSCC although non-silent mutations in some of these genes have been observed in cSCC<sup>10</sup> (Supplementary Data 23).

**Mutational pathway analysis.** Mutational pathway analysis revealed several KEGG signalling pathways that were more mutated in the MD/PD group, such as NOTCH, TGF- $\beta$ , WNT, PI3K-AKT and neurotrophin signalling (Fig. 7c and Supplementary Data 24, 25). The MD/PD-specific mutated pathways also included those related to immune responses such as T-cell receptor, Fc epsilon RI, RIG-I-like receptor and chemokine signalling pathways (Fig. 7c). Furthermore, our mutational pathway analysis revealed that biological processes of ECM-receptor interaction, cell cycle, tight junction and glycolysis/gluconeogenesis were also more significantly mutated in the MD/PD group compared to WD group, whereas lysine degradation, regulation of the actin cytoskeleton, carbohydrate digestion and adsorption and basal transcription factors were among those specific to the WD group (Fig. 7d and Supplementary Data 25). Computational pathway analysis of mutated genes in cSCC has not previously been performed. Manual pathway assessment previously suggested involvement of the RAS/RTK/PI3K and cell cycle pathways in aggressive cSCC<sup>10</sup> consistent with our observations (Fig. 7c, d). The findings that PI3K signalling is frequently altered in more aggressive SCCs such as HNSCC, lung and oesophageal SCC<sup>11</sup> further supports our MD/PD pathway analysis implicating PI3K-AKT signalling in disease progression.

**Patient-derived cell lines reflect primary tumours.** To facilitate future functional studies, tumour keratinocytes were cultured from multiple tumours and a panel of 15 cell lines was selected for full characterisation (Supplementary Data 26). Nine were derived from five OTR patients on immunosuppressive drugs including five from a single patient (PM1, MET1,2,4, T9)<sup>47</sup>. Six lines were derived from five immunocompetent patients (IC1, IC1MET, IC8, IC12, IC18 and IC19) with IC1/IC1MET being paired primary and metastatic lymph node derived lines, respectively.

In general, mutational profiles of patient-derived cell lines were comparable with those of the tumour sample set (Supplementary Data 27). Mutation signature analysis showed that signature 7 was present in all cell lines, and eight lines from four patients also contained signature 32, all of which were derived from tumours from immunosuppressed patients receiving azathioprine (Fig. 8a and Supplementary Data 28). Interestingly, PM1, MET1, 2, 4, and T9 from the same patient show very similar mutation signature compositions, except that MET4 also exhibited signature 26 associated with defective DNA mismatch repair<sup>14</sup> in 32% of its total mutations (Fig. 8a and Supplementary Data 28). OncoPrint analysis indicated that many of the cell lines have alterations in mismatch repair genes (Supplementary Fig. 12) but this does not correlate with the presence of signature 26. Analysis of somatic CNA/LOH revealed many recurrently altered regions that were also present in patient tumours including amplification at 3q26, 7q21 and 11q22, and deletions at 5q13 and 3p12 (Fig. 8b). The cell lines exhibited a high degree of chromosome instability similar to the most genomically altered primary tumours. Mutations in the 22 SMGs from the primary tumour set also frequently occurred in cell lines, with *TP53*, *NOTCH1/2* and *CDKN2A* the most recurrently altered with similar mutational





**Fig. 6** Expression profiles of genes significantly amplified or deleted in cSCC. **a** Expression heatmap of significantly amplified and upregulated genes ( $n = 23$ ), and deleted and downregulated genes ( $n = 9$ ) in the in situ vs. normal comparison that were also expressed across normal, AK, in situ and invasive SCC samples from GSE42677. **b** Venn diagrams of overlap across five gene expression data sets of significantly amplified genes and overexpressed (upper panel) and significantly deleted and downregulated genes (lower panel). **c** Log<sub>2</sub> fold changes (FC) of pairwise comparisons of AK vs. normal and SCC vs. normal across the five data sets for 19 amplified/upregulated and 5 deleted/downregulated expressed genes shared across at least three data sets. Within the heatmap, red colour indicates the upregulation in AK or SCC compared to normal control and blue colour indicates the downregulation in AK or SCC in relation to normal skin

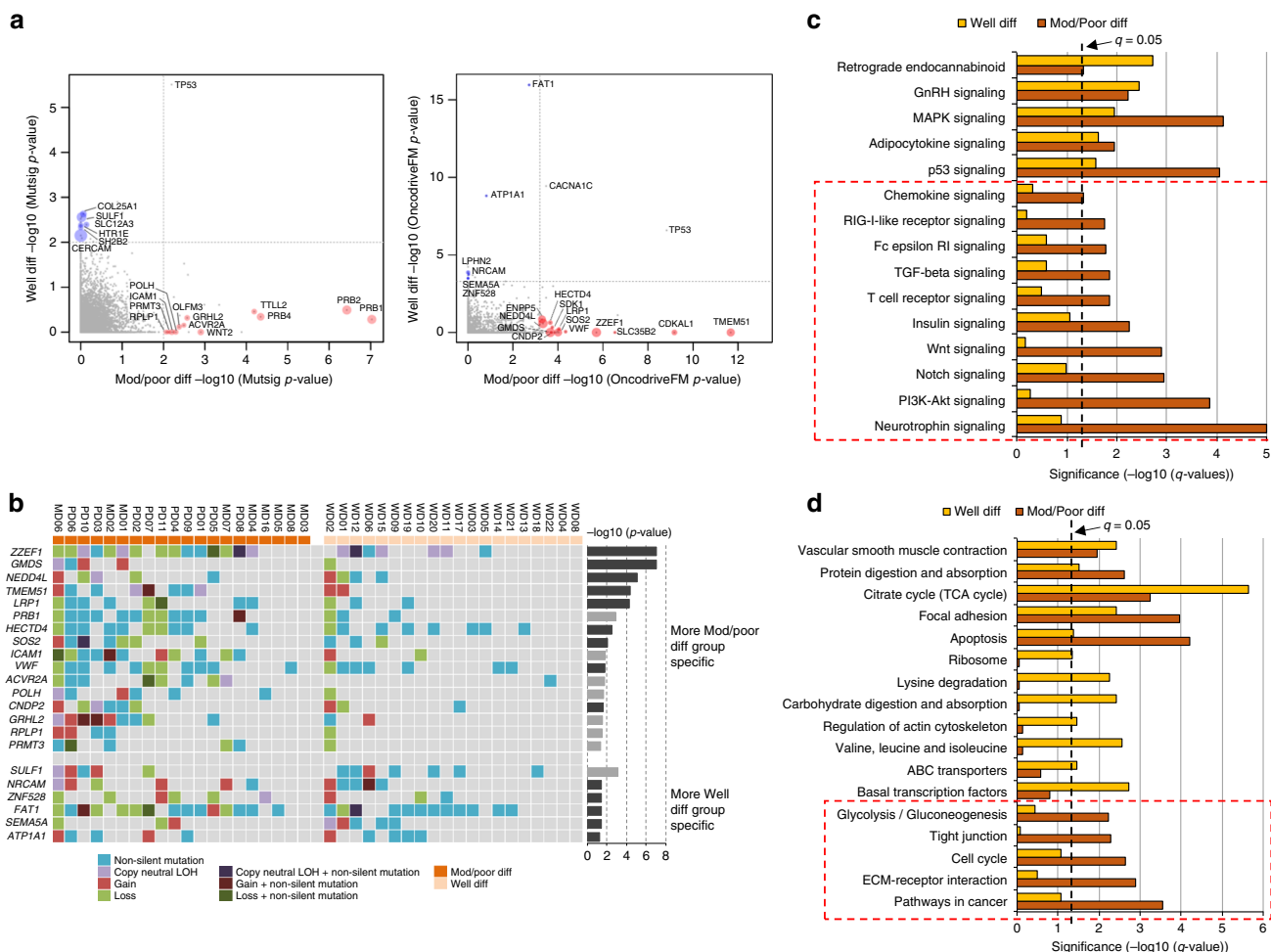
profiles in primary tumour samples and cell lines (Fig. 8c, Supplementary Data 29 and Supplementary Fig. 13).

We also performed gene expression analysis of our cell lines and three separate isolates of primary normal human keratinocytes (NHKs) using Illumina Beadchip arrays (Supplementary Data 30). *NOTCH2*, a commonly downregulated SMG in the primary tumour data set, was also downregulated in cSCC cell lines in comparison to NHKs (Supplementary Fig. 14A). 2/7 commonly upregulated SMGs (*CDKN2A* and *WHSC1*) were also upregulated in cSCC cell lines compared to NHKs (Supplementary Fig. 14A). 3/19 commonly amplified and upregulated genes *POLR2H*, *ALG3* and *AP2M1*, were also upregulated in the cell lines relative to NHKs and 2/5 of the commonly deleted and downregulated genes, *SSBP2* and *F2R*, were also downregulated in cSCC relative to NHKs (Supplementary Fig. 14B). We further identified the mutational profiles for MD/PD and WD group-specific SMGs in cell lines, with MD/PD-specific SMGs *ZZEF1*, *NEDD4L*, *LRP1*, *VWF*, *HECTD4*, *ICAM1* and *ACVR2A* being the most frequently altered, and WD-specific genes *FAT1*, *NRCAM*, *SULF1* and *ATPIA1* recurrently altered in SCC lines (Fig. 8d). Our cell lines thus represent a well characterised resource, which reflects the molecular landscape of primary cSCC.

## Discussion

Here, we present the largest analysis of cSCC WES so far performed and provide a unique data set with 20 samples from moderately/poorly differentiated tumours, 20 from well-differentiated tumours and 15 samples from cSCC cell lines. Thirty-three primary tumour samples and nine cell lines were derived from immunosuppressed patients. Patients who are iatrogenically immunosuppressed to prevent organ transplant rejection have been recognised as being at greatly increased risk of cSCC (100–250-fold) with a reversal of the normal BCC:cSCC ratio from 4:1 to 1:2<sup>2,48</sup>.

Each biological process causing mutations in somatic cells that may drive tumour formation leaves a mutational signature and deciphering these signatures is a unique opportunity to reveal the mutational processes operative in different cancer types<sup>13,14,16,17,49</sup>. We applied this approach to our data set and found five previously identified signatures in our tumours including signature 7, which has been associated with exposure to UVR a known potent skin cancer carcinogen. The UVR signature was found in 33/37 exomes examined and in all 15 cell lines. A novel signature, termed signature 32 was found in 27 of the tumour samples and 8 of the cell lines (Figs. 1, 8). Interrogation of the clinical history for each patient found that the presence of signature 32 correlated with immunosuppressive regimens including use of azathioprine. Although immunosuppressants such as mycophenolate mofetil, cyclophosphamide and cyclosporine A affect DNA damage mechanisms, including UV induced DNA excision repair<sup>50–52</sup>, three patients received azathioprine alone and analysis of treatment times revealed a strong positive correlation with exposure time to azathioprine and signature 32 prevalence (Supplementary Fig. 3). All of the signature 32 positive cell lines were also from immunosuppressed patients who received azathioprine (Fig. 8). Furthermore, only exposure to azathioprine and not the other immunosuppressive drugs correlated with the presence of signature 32 and the only significant correlation of immunosuppressive drug use and the presence of any of the mutational signatures was with azathioprine exposure and signature 32 (Supplementary Fig. 2). This signature is likely to be of biological relevance as mutational signature analysis of mutations in the putative driver genes identified in our study, revealed that over 65% of these were signature 32 (Fig. 3c). Azathioprine, an inhibitor of de novo purine synthesis, is associated with selective ultraviolet A (UVA) photosensitivity and mutagenic effects in the skin<sup>53</sup>. The azathioprine metabolite 6-thioguanine (6-TG) replaces a small proportion of DNA guanine

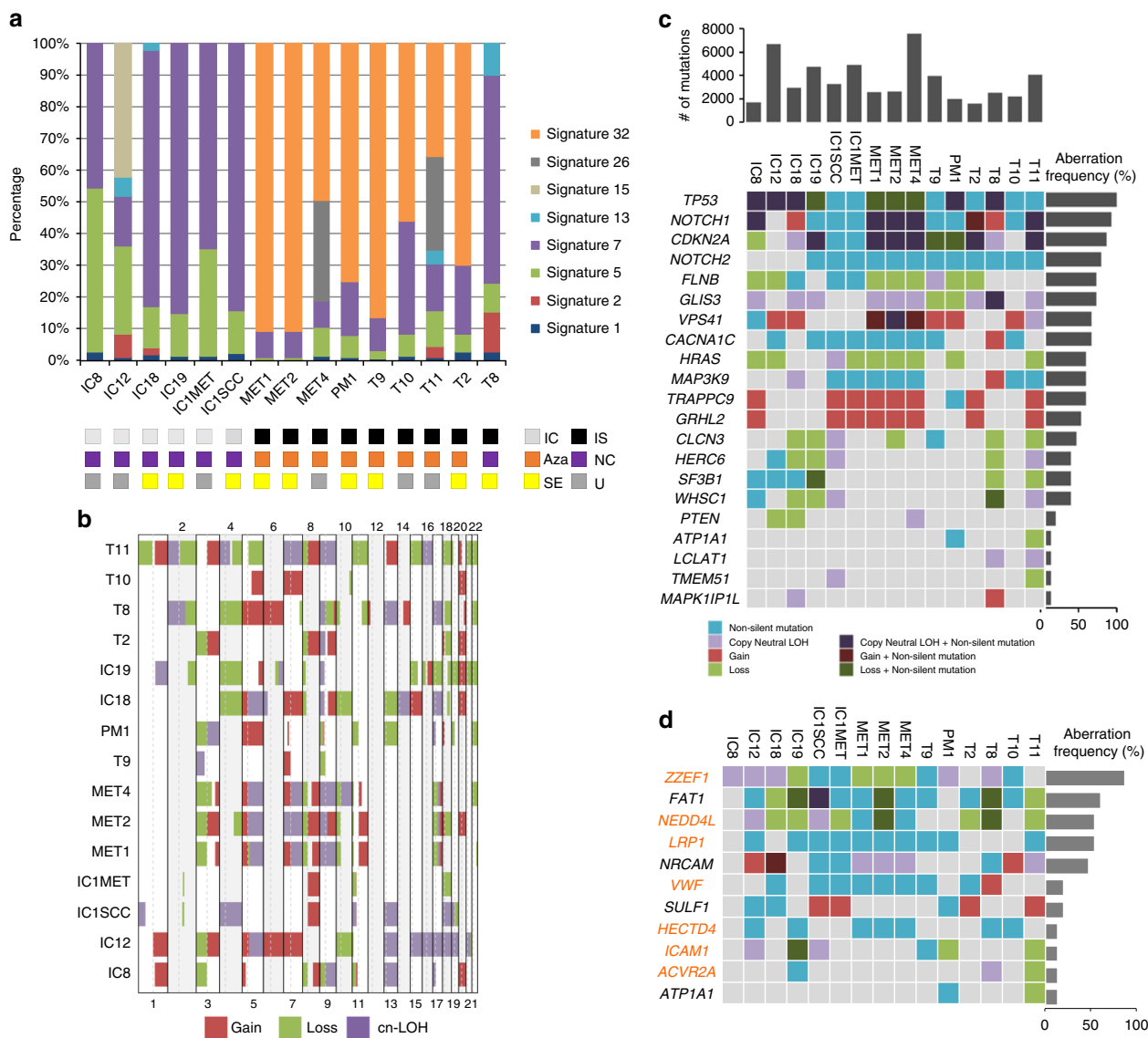


**Fig. 7** Comparison of significantly mutated genes and pathways between moderate/poor and well-differentiated groups. **a** Group-specific SMGs from the randomisation test based on MutSigCV and OncodriveFM  $p$ -values, respectively. Moderate/poor group-specific genes were marked with red circles, while well-differentiated group-specific genes were marked with blue circles. The size of the circle corresponds to its significance compared to that expected by chance. **b** Mutation OncoPrint of group-specific genes that were expressed across 40 cSCC samples in moderate/poor and well-differentiated groups. Significance level ( $-\log_{10}$  ( $p$ -value)) from the randomisation test was also shown for each gene as bar charts. Genes derived from the OncodriveFM statistics were shown in dark grey, while genes derived from MutSigCV statistics were in light grey. Genes at the top panel appeared to be more moderate/poor group specific, while genes at the bottom panel were more well-differentiated group specific. **c** Significantly mutated KEGG signalling pathways and **d** biological processes between moderate/poor and well-differentiated groups. Significant pathways and processes in moderate/poor group only were marked with a dotted square. Pathways and biological processes in the bar charts were sorted with terms significant in both groups at the top, and terms significant in moderate/poor group only at the bottom (indicated with red dashed boxes)

and becomes a strong UVA chromophore, interacting with UVA to generate reactive oxygen species, which cause widespread DNA damage and protein oxidation; the latter damages the DNA repair proteome increasing UVB mutagenicity<sup>53,54</sup>. Azathioprine photosensitivity is clinically measurable, may be associated with a specific genetic signature in basal cell carcinoma<sup>55</sup> and can be reduced by switching from azathioprine to mycophenolate mofetil (MMF), although azathioprine metabolites may persist in the skin for several years after withdrawal<sup>56</sup>. Given the photosensitising properties of azathioprine we postulate that the combined action of UVR and incorporation of azathioprine metabolites into DNA provide the biochemical basis for this novel signature. We propose that these azathioprine effects are associated with this new genetic signature (signature 32) that contributes to tumour progression. This has clinical significance for the many patients currently receiving azathioprine who should be counselled about their skin cancer risk and UVR photosensitivity.

We confirm the high mutational burden present in cSCC with an average of over 1700 mutations present in the primary tumour exomes (Fig. 1). WES data enabled us to assess clonality and revealed that most tumours are highly heterogenous containing 2–11 clones (Fig. 4). GISTIC analysis revealed common areas of copy number loss and gain in our samples with MD/PD tumours exhibiting higher levels of chromosomal instability compared to WD tumours (Fig. 2) further illustrating the genetic complexity of cSCC.

We employed three computational methods (MutSig, OncodriveClust, OncodriveFM) and identified 351 SMGs at the cutoffs we used. Twenty-two genes were found to be significant in two or more of these programmes enabling a further ranking of the potential driver genes (Fig. 3). Combination of these analyses with CNA/LOH analysis indicate that alteration of *NOTCH1* and *NOTCH2* genes are among the most common events in cSCC (Fig. 3) with only 3/20 MD/PD tumours and 5/20 WD tumours escaping alteration in either of these genes indicating that the



**Fig. 8** Mutation signatures, somatic CNA/LOH and mutation profiles for identified SMGs in cSCC tumour samples in SCC cell lines. **a** Mutation signatures across all SCC cell lines. Again, signature 7 and 32 were the most dominant signatures. IC immunocompetent, IS immunosuppressed, Aza confirmed azathioprine exposure, NC no confirmed azathioprine exposure, SE sun exposed site, U unknown if sun exposed site **b** OncoPrint of copy gain, loss and CN-LOH segments. **c** Mutation OncoPrint for 22 SMGs detected in cSCC tumour samples across cell lines, ordered by aberration frequency. **d** Mutation OncoPrint for WD/MD/PD driver genes detected in cSCC tumour samples across cell lines, ordered by frequency. MD/PD-specific genes found in cSCC samples are highlighted in orange

NOTCH pathway is an almost universal tumour suppressor pathway in cSCC probably due to its role in promoting cell cycle exit and differentiation<sup>57</sup>. We also identify *TP53* alterations in 70% of our tumours and *CDKN2A* changes in nearly 50% of cases. Clonality analysis revealed that *CDKN2A* mutations are clonal (Fig. 4c, d) indicating a likely early event in formation of the tumours in which they were identified. Strikingly, despite deep sequencing efforts, *CDKN2A* mutations in contrast to *TP53* or *FAT1* mutations have yet to be identified in sun-exposed ‘normal skin’<sup>6</sup> suggesting a key gatekeeper role of p16INK4B in cSCC. Our findings also suggest that mutations in *ATP1A1*, *HERC6*, *MAPK11P1L*, *GRHL2*, *TRAPPC9*, *FLNB*, *NOTCH1* and *MAP3K9* represent early driving events in cSCC (Fig. 4c, d). Within these, alteration in *ATP1A1* may pre-dispose to well-differentiated tumours, whereas alterations in *GRHL2* may pre-dispose to more poorly differentiated and potentially poorer

prognosis tumours (Fig. 7). *GRHL2* mutations are associated with an autosomal-recessive ectodermal dysplasia<sup>58</sup> and this transcription factor may drive a cancer stemness phenotype in oral SCC<sup>59</sup>. This gene clearly warrants further investigation in cSCC.

To further sift our list of somatically mutated genes and those that are encoded within regions of common amplification or loss we integrated our WES data with five independent gene expression data sets (Figs. 5, 6). Interestingly, despite the proposed tumour suppressor role of inactivating mutations in *CDKN2A* we consistently observed upregulation of *CDKN2A* gene expression in the GEP data sets and in our cell lines (Fig. 5 and Supplementary Fig. 14). Transcription factor motif analysis indicates that ERK signalling through ETS transcription factors may be operative during SCC progression<sup>7</sup> and this may act to upregulate *CDKN2A* expression as part of a stress induced senescence programme<sup>60</sup> possibly explaining this discrepancy. This analysis

highlights potential oncogenic tumour promoting roles for the actin binding protein encoded by *FLNB* and the histone methyltransferase encoded by *WHSC1*, as expression of both of these genes are elevated during cSCC progression and they do not contain premature termination codon or splice site mutations (Fig. 5 and Supplementary Fig. 6, 7). We also identified genetic alteration of the arginine methyltransferase, *PRMT3*, specifically in the MD/PD tumours (Fig. 7B), further indicating that epigenetic modifiers may regulate cSCC progression. Genes that are amplified and upregulated during cSCC progression may act as oncogenic drivers of disease and we revealed 19 further genes with this potential role including the SKI like proto-oncogene *SnoN* encoded by the *SKIL* gene (Fig. 6). This transcription factor can modulate canonical TGF- $\beta$  signalling<sup>61</sup> and pathway analysis revealed that genomic alterations in TGF- $\beta$  signalling are enriched in the MD/PD group of tumours (Fig. 7C). Consistent with this we also identify alterations in the *ACVR2A* gene that encodes for an activin/BMP receptor enriched in this tumour group, which is also downregulated during tumour progression (Fig. 7B and Supplementary Fig. 11) implying a tumour suppressor role for this gene. Our recent studies have confirmed that the TGF- $\beta$  pathway acts as a potent tumour suppressor pathway in cSCC with mutational inactivation of *TGFBR1* and/or *TGFBR2* occurring in ~40% of cSCC tumours<sup>15</sup>.

Integration of gene expression data sets with GISTIC analysis of CNVs provides a powerful technique for identifying genes, which contribute to disease progression without the involvement of SNV alterations. This analysis implicates *SEMA3C*, *STEAP4*, *MMP10*, *RAP2B* and *AP2M1* as a potential cSCC drivers (Fig. 6). These genes have been implicated in promoting tumour growth. *SEMA3C* can activate RTK signalling and drive prostate cancer growth<sup>62</sup>, *STEAP4* may promote colorectal cancer development<sup>63</sup>, *MMP10* may mediate c-Fos driven cSCC development<sup>64</sup>, *RAP2B* is a well described oncogenic activator<sup>65</sup> and *AP2M1* may participate in senescence escape<sup>66</sup>. These observations support the hypothesis that our integrated analysis approach has potentially revealed novel drivers of cSCC and provides further impetus for functional interrogation of the genes and pathways revealed in our study.

In summary, this study describes the complex molecular landscape of cSCC and identifies new potential driver genes, pathways and processes associated with both the development of well-differentiated and potentially poorer prognosis moderately/poorly differentiated tumours in both immunosuppressed and immunocompetent patients. Importantly we identify a novel mutational signature associated with chronic azathioprine exposure and describe the molecular landscape of 15 cSCC cell lines derived from both primary and metastatic lesions which reflect the complexity of tumours and provides a unique resource for determining the biological significance of the molecular events responsible for cSCC maintenance and progression.

## Methods

**Collection of patient samples.** The study was approved by the East of Scotland Research Ethics Service (reference: 08/S1401/69) and the East London and City Health Authority Local Ethics Committee and conducted according to the Declaration of Helsinki Principles. All patients participating in the study provided written, informed consent. Punch biopsies of cSCC were collected in tissue culture transport medium comprising DMEM supplemented with 50 units/ml penicillin and 50  $\mu$ g/ml streptomycin and 1x fungizone solution (all from Life Technologies, Paisley, UK) or snap-frozen in liquid nitrogen. Venous blood samples were taken from patients into EDTA tubes, aliquoted into cryovials and stored at  $-80^{\circ}\text{C}$ . Histology of patient samples were reviewed blind by two independent pathologists. Details of prescribed medications including drug, dose and duration were derived from two independent reviews of available clinical notes and transplant databases for all immunosuppressed patients. The estimated time of azathioprine therapy for all patients with a history of azathioprine use were calculated and rounded to the nearest month. Complete clinical notes

spanning the entire patient journeys were not available for all patients and those without documentary evidence of azathioprine exposure were classified as no confirmed exposure.

**Isolation and culture of cSCC lines.** Cultures were established according to a previously described method<sup>67</sup>. In brief, tumour tissue was cut into small pieces and dissociated by incubation at  $37^{\circ}\text{C}$  in 0.25% trypsin-EDTA (Life Technologies, Paisley, UK) followed by physical disruption using needles. Residual tissue was removed by passing the cell suspension through a  $100\ \mu\text{m}$  cell strainer and SCC keratinocytes recovered by centrifugation and plated onto a mouse 3T3 feeder cell layer in keratinocyte culture medium comprising DMEM/Ham's F12 (3:1; Life Technologies, Paisley, UK) supplemented with 10% fetal bovine serum (FBS; Biosera, Ringmer, UK) and a cocktail of mitogens<sup>67</sup>. Cultures were maintained in keratinocyte culture medium supplemented with 10 ng/ml EGF (Serotec, Oxford, UK) and passed upon attaining 80% confluence. All cell lines were routinely screened for mycoplasma and were negative throughout the study.

**DNA extraction and genetic analysis.** DNA was extracted from snap-frozen tissue, cultured cells and blood using the Qiagen DNA Mini kit (Qiagen, Crawley, UK) according to the manufacturer's instructions. Quantitation was performed using the double-stranded DNA-specific Qubit dsDNA BR assay kit in conjunction with the Qubit 2.0 fluorometer (both Life Technologies, Paisley, UK). Short tandem repeat (STR) genotyping was performed to authenticate the unique identity of each cell line. Sixteen loci distributed across the human genome were amplified using the AmpFLSTR Identifier PCR Amplification Kit followed by capillary sequencing on the 3730xl DNA analyser (all reagents from Life Technologies, Paisley, UK). Microarray-based single-nucleotide polymorphism (SNP) analysis was performed by subjecting 500 ng DNA from each cell line and matched blood to the Genome-Wide Human SNP Nsp/Sty 6.0 assay (Affymetrix, Santa Clara, CA) according to the manufacturer's instructions. Whole-exome sequencing (WES) was performed by Oxford Gene Technology (OGT) using Agilent SureSelect All Exon v5 for exome capture. Briefly, 1  $\mu$ g of DNA from each sample were used to prepare the sequencing library through shearing of the DNA followed by ligation of sequencing adaptors. Sequencing was performed on the Illumina HiSeq platform. Paired-end sequencing ( $2 \times 100$  bp) was carried out using HiSeq sequencing instruments.

**WES data processing, somatic variant calling and annotation.** Thirty previously published sporadic cSCC samples<sup>5,15</sup> were included and reanalysed with our ten new primary tumour samples and 15 cSCC cell lines. WES data of all samples (except the T2 cell line, see below) were analysed using our established pipeline<sup>68,69</sup>. The minimum coverage for identified variant sites was required to be as ten reads. For the cell line sample T2, the variant calling was performed using the VarScan2 somatic calling module<sup>70</sup>. There was around 22% of DNA in the corresponding normal sample that was tumour DNA, suggested by the variant allele frequency (VAF) density from the normal sample. Within VarScan2 somatic calling, allele frequencies from the T2 cancer cell line and the normal control sample were compared by Fisher's Exact Test, and somatic  $p$ -values were derived. High-confidence somatic calls were subsequently extracted for T2 using the VarScan2 'process-Somatic' module, with mutations with  $> 20\%$  VAFs further selected. Identified somatic variants, including single-nucleotide variants (SNV) and indels, in 40 patient samples and 12 cell lines were further annotated using Oncotator<sup>71</sup> and SNPnexus<sup>72</sup>. Mutation signatures across the 40 exomes were identified based on the non-negative matrix factorisation (NMF) approach previously described<sup>13</sup>. WES data of 40 cSCC samples have been deposited to the European Genome-phenome Archive (EGA) under the accession of EGAS00001002612.

**Identification of mutational driver genes and pathways.** We used three methods to identify different positive selection signals that occurred in driver mutations: OncodriveFM<sup>27</sup>, OncodriveCLUST<sup>28</sup>, both implemented in the IntoGen software<sup>73</sup>, and MutSigCV<sup>26</sup>. For OncodriveFM and OncodriveCLUST, we used corrected  $p$ -values ( $q < 0.05$ ) for significance. For MutSigCV, due to the small sample size,  $p$ -values could not be adjusted, so raw  $p < 0.05$  was applied. Overlapped genes that were identified being significant by at least two of the three methods were further selected. Significantly mutated pathways were also identified using OncodriveFM ( $q < 0.05$ ).

**Randomisation test to identify MD/PD and WD-specific drivers.** To identify moderate/poor and well-differentiated specific driver genes, we further applied OncodriveFM and MutSigCV on 20 moderate/poor and 20 well-differentiated cSCC samples separately. The significance  $p$ -values derived from the two methods were ( $-\log_{10}$ ) transformed and compared between the two groups to highlight group-specific genes. In the MutSigCV test, we selected genes with  $p < 0.01$  in one group but  $p > 0.1$  in the other group. In the OncodriveFM test, we focused on genes with corrected  $p < 0.05$  in one group but corrected  $p > 0.1$  in the other. For these selected candidate genes, we further developed a randomisation test procedure where the pool of 40 SCC samples was randomly split into two groups of equal size ( $n = 20$ ). We then applied MutSigCV and OncodriveFM on

the two groups and recorded the significance values for our candidate genes. We repeated this randomisation procedure 100 times and the transformed  $p$ -values from MutSigCV or OncodriveFM generally followed a normal distribution for each gene. We next calculated the probability that the observed significance in moderate/poor or well-differentiated group was stronger than that expected by chance for each candidate. Significant genes from the randomisation test (two-tail  $p < 0.05$ ) were further noted and regarded as the true moderate/poor or well-differentiated specific genes.

**Identification of CNA and LOH using WES data.** Analyses for CNA and LOH events from WES data were based on a combinational approach previously described<sup>69,74</sup>. We adopted two independent approaches (ASCAT<sup>75</sup> and VarScan2/DNAcopy R packages) to analyse matched tumour and normal samples for copy number analyses. Using ASCAT, a gain (amplification) is called if (predicted total copy number – predicted ploidy)  $> 0.6$  and a loss if (predicted total copy number – predicted ploidy)  $< -0.6$ . Using DNAcopy circular binary segmentation (CBS) segments, the logR ratio was used to discriminate copy number gains and losses (logR ratio  $> 0.15$  = gain, logR  $< -0.15$  = loss). We then selected only the consensus calls across the two methods. In addition, we visually inspected all CNA/LOH events using the logR and B-allele frequency (BAF) plots, and further included copy number gain and loss events when they were clearly supported by one method, but just below the cutoff threshold in the other. Genes targeted by copy gain, loss and copy-neutral LOH (cn-LOH) in each sample were further identified.

**Identification of significantly amplified/deleted regions.** To further identify significantly amplified and deleted regions in cSCC genomes, we applied GISTIC2.0<sup>25</sup> ( $q < 0.1$ ) using the CNA segments and markers generated by VarScan variant calling and ASCAT R package<sup>75</sup>. Thirty-one of the 40 cSCC exomes that passed the ASCAT analysis were used. Regions that overlap with centromere and telomere were excluded. We further removed regions that were identified as both significantly amplified and deleted.

**Tumour subpopulation identification and clonality analysis.** EXPANDS<sup>39</sup> was used to estimate clonal expansions and cellular frequency of each clonal and subclonal population. Somatic SNVs, indels and CNA segments derived from DNAcopy CBS algorithm were used as input for each tumour. Tumour samples with less than 200 somatic mutations were excluded from this analysis, since stable results may not be solved for these samples, resulting in processing of 35 out of the 40 WES samples. Within each tumour sample, the largest clone was identified as the dominant clone and clones with lower cellular frequencies were regarded as sub-clones. Tumour purity was also estimated based on the cellular frequency of the dominant clone. All somatic variants were assigned to their nested clones. We also used SciClone<sup>40</sup> to estimate mutational clusters and Infer clonal architecture for 35/40 cSCC exomes. Similar to EXPANDS, Somatic SNVs, indels with their VAFs along with CNA segments were used as input. The cluster with the largest number of mutations was regarded as the dominant clone for each sample, and subpopulations and tumour purity were subsequently derived. The clonality results and tumour purity from both methods were further compared and assessed.

**Gene expression microarray data analysis and integration.** Five sets of expression microarray data of patient samples were selected and downloaded from Gene Expression Omnibus (GEO), GSE42677<sup>45</sup>, GSE45216<sup>44</sup>, GSE2503<sup>46</sup>, GSE84293<sup>7</sup> and GSE32628<sup>21</sup>. The GSE42677 data set included 10 normal skin, 5 AK, 5 in situ and 5 invasive SCC samples, the GSE2503 data set included 6 normal skin, 4 AK and 5 SCC samples, the GSE84293 data set included 8 normal skin, 9 AK and 9 SCC samples and the GSE32628 data set included 13 normal skin, 14 AK and 15 SCC samples. The available normalised expression values in log<sub>2</sub> scale were used. The GSE45216 data set had 10 AK and 30 SCC. For this set, we further included 16 non-sun-exposed (NSE), 20 sun-exposed (SE) normal skin and 18 AK samples profiled using the same platform, Affymetrix Human Genome U133 Plus 2.0 Array. All raw.CEL files of 94 samples were assembled and processed together. Quality control (QC) and normalisation were performed on our O-miner transcriptomics analysis platform<sup>76</sup>, where the RMA (robust multi-array average) approach was used. For all five data sets, differential expression (DE) analyses between different groups were performed using limma R package<sup>77</sup>. The DE genes were identified using the adjusted  $p$ -value  $< 0.05$ .

For SMGs, as well as significantly amplified and deleted genes identified above, we further investigated their expression profiles across normal skin, AK and SCC samples. Based on the normalised non-log<sub>2</sub> transformed expression values, we regarded probes with the expression values  $< 100$  as not being expressed or expressed at a low level. Thus, we further identified genes that were expressed across normal skin, AK and SCC samples in the five data sets. We then categorised them as genes with an activating role in the tumour development if they were significantly upregulated, or genes with a suppressing role if they were significantly downregulated in SCC/AK samples compared to normal skin, in at least three out of the five data sets.

For patient-derived cell lines, gene expression data were obtained from Illumina HumanHT-12 v4 Expression BeadChip. Raw image files were first processed using Illumina GenomeStudio, and then normalised using the O-miner platform where lumi R bioconductor package<sup>78</sup> was applied. The limma R package was used for the DE analysis. The raw and normalised data have been deposited at GEO under the accession number of GSE98780.

## Data availability

All data is provided in Supplementary Data 1-30, in GSE98780 and EGAS00001002612.

Received: 31 July 2017 Accepted: 7 August 2018

Published online: 10 September 2018

## References

- Guy, G. P. Jr., Machlin, S. R., Ekwueme, D. U. & Yabroff, K. R. Prevalence and costs of skin cancer treatment in the U.S., 2002-2006 and 2007-2011. *Am. J. Prev. Med.* **48**, 183–187 (2015).
- Harwood, C. A. et al. A surveillance model for skin cancer in organ transplant recipients: a 22-year prospective study in an ethnically diverse population. *Am. J. Transplant.* **13**, 119–129 (2013).
- Karia, P. S., Han, J. & Schmults, C. D. Cutaneous squamous cell carcinoma: estimated incidence of disease, nodal metastasis, and deaths from disease in the United States, 2012. *J. Am. Acad. Dermatol.* **68**, 957–966 (2013).
- Harwood, C. A., Proby, C. M., Inman, G. J. & Leigh, I. M. The promise of genomics and the development of targeted therapies for cutaneous squamous cell carcinoma. *Acta Derm. Venereol.* **96**, 3–16 (2016).
- South, A. P. et al. NOTCH1 mutations occur early during cutaneous squamous cell carcinogenesis. *J. Invest. Dermatol.* **134**, 2630–2638 (2014).
- Martincorena, I. et al. Tumor evolution. High burden and pervasive positive selection of somatic mutations in normal human skin. *Science* **348**, 880–886 (2015).
- Chitsazzadeh, V. et al. Cross-species identification of genomic drivers of squamous cell carcinoma development across preneoplastic intermediates. *Nat. Commun.* **7**, 12601 (2016).
- Lee, C. S. et al. Recurrent point mutations in the kinetochore gene KNSTRN in cutaneous squamous cell carcinoma. *Nat. Genet.* **46**, 1060–1062 (2014).
- Li, Y. Y. et al. Genomic analysis of metastatic cutaneous squamous cell carcinoma. *Clin. Cancer Res.: Off. J. Am. Assoc. Cancer Res.* **21**, 1447–1456 (2015).
- Pickering, C. R. et al. Mutational landscape of aggressive cutaneous squamous cell carcinoma. *Clin. Cancer Res.: Off. J. Am. Assoc. Cancer Res.* **20**, 6582–6592 (2014).
- Dotto, G. P. & Rustgi, A. K. Squamous cell cancers: A unified perspective on biology and genetics. *Cancer Cell.* **29**, 622–637 (2016).
- Bailey, P. et al. Genomic analyses identify molecular subtypes of pancreatic cancer. *Nature* **531**, 47–52 (2016).
- Alexandrov, L. B., Nik-Zainal, S., Wedge, D. C., Campbell, P. J. & Stratton, M. R. Deciphering signatures of mutational processes operative in human cancer. *Cell Rep.* **3**, 246–259 (2013).
- Alexandrov, L. B. et al. Signatures of mutational processes in human cancer. *Nature* **500**, 415–421 (2013).
- Cammareri, P. et al. Inactivation of TGFbeta receptors in stem cells drives cutaneous squamous cell carcinoma. *Nat. Commun.* **7**, 12493 (2016).
- Petljak, M. & Alexandrov, L. B. Understanding mutagenesis through delineation of mutational signatures in human cancer. *Carcinogenesis* **37**, 531–540 (2016).
- Hollstein, M., Alexandrov, L. B., Wild, C. P., Ardin, M. & Zavadil, J. Base changes in tumour DNA have the power to reveal the causes and evolution of cancer. *Oncogene* **36**, 158–167 (2017).
- Alexandrov, L. B. et al. Mutational signatures associated with tobacco smoking in human cancer. *Science* **354**, 618–622 (2016).
- Drost, J. et al. Use of CRISPR-modified human stem cell organoids to study the origin of mutational signatures in cancer. *Science* **358**, 234–238 (2017).
- Alexandrov, L. B. et al. Clock-like mutational processes in human somatic cells. *Nat. Genet.* **47**, 1402–1407 (2015).
- Hameetman, L. et al. Molecular profiling of cutaneous squamous cell carcinomas and actinic keratoses from organ transplant recipients. *BMC Cancer* **13**, 58 (2013).
- Sekulic, A. et al. Loss of inositol polyphosphate 5-phosphatase is an early event in development of cutaneous squamous cell carcinoma. *Cancer Prev. Res.* **3**, 1277–1283 (2010).
- Salgado, R. et al. CKS1B amplification is a frequent event in cutaneous squamous cell carcinoma with aggressive clinical behaviour. *Genes, Chromosomes Cancer* **49**, 1054–1061 (2010).

24. Purdie, K. J. et al. Single nucleotide polymorphism array analysis defines a specific genetic fingerprint for well-differentiated cutaneous SCCs. *J. Invest. Dermatol.* **129**, 1562–1568 (2009).
25. Mermel, C. H. et al. GISTIC2.0 facilitates sensitive and confident localization of the targets of focal somatic copy-number alteration in human cancers. *Genome Biol.* **12**, R41 (2011).
26. Lawrence, M. S. et al. Mutational heterogeneity in cancer and the search for new cancer-associated genes. *Nature* **499**, 214–218 (2013).
27. Gonzalez-Perez, A., Deu-Pons, J. & Lopez-Bigas, N. Improving the prediction of the functional impact of cancer mutations by baseline tolerance transformation. *Genome Med.* **4**, 89 (2012).
28. Tamborero, D., Gonzalez-Perez, A. & Lopez-Bigas, N. OncodriveCLUST: exploiting the positional clustering of somatic mutations to identify cancer genes. *Bioinformatics* **29**, 2238–2244 (2013).
29. Slattery, M. L. et al. Diet and lifestyle factors interact with MAPK genes to influence survival: the Breast Cancer Health Disparities Study. *Cancer Causes Control: CCC* **25**, 1211–1225 (2014).
30. Oyer, J. A. et al. Point mutation E1099K in MMSET/NSD2 enhances its methyltransferase activity and leads to altered global chromatin methylation in lymphoid malignancies. *Leukemia* **28**, 198–201 (2014).
31. Roy, D., Sin, S. H., Damania, B. & Dittmer, D. P. Tumor suppressor genes FHIT and WWOX are deleted in primary effusion lymphoma (PEL) cell lines. *Blood* **118**, e32–e39 (2011).
32. Ibarrola-Villava, M. et al. Genes involved in the WNT and vesicular trafficking pathways are associated with melanoma predisposition. *Int. J. Cancer* **136**, 2109–2119 (2015).
33. An, C. H. et al. Frameshift mutations of vacuolar protein sorting genes in gastric and colorectal cancers with microsatellite instability. *Hum. Pathol.* **43**, 40–47 (2012).
34. Alsafadi, S. et al. Cancer-associated SF3B1 mutations affect alternative splicing by promoting alternative branchpoint usage. *Nat. Commun.* **7**, 10615 (2016).
35. Hollander, M. C., Blumenthal, G. M. & Dennis, P. A. PTEN loss in the continuum of common cancers, rare syndromes and mouse models. *Nat. Rev. Cancer* **11**, 289–301 (2011).
36. Schubbert, S., Shannon, K. & Bollag, G. Hyperactive Ras in developmental disorders and cancer. *Nat. Rev. Cancer* **7**, 295–308 (2007).
37. Fawdar, S. et al. Targeted genetic dependency screen facilitates identification of actionable mutations in FGFR4, MAP3K9, and PAK5 in lung cancer. *Proc. Natl Acad. Sci. USA* **110**, 12426–12431 (2013).
38. Stark, M. S. et al. Frequent somatic mutations in MAP3K5 and MAP3K9 in metastatic melanoma identified by exome sequencing. *Nat. Genet.* **44**, 165–169 (2011).
39. Andor, N., Harness, J. V., Muller, S., Mewes, H. W. & Petritsch, C. EXPANDS: expanding ploidy and allele frequency on nested subpopulations. *Bioinformatics* **30**, 50–60 (2014).
40. Miller, C. A. et al. SciClone: inferring clonal architecture and tracking the spatial and temporal patterns of tumor evolution. *PLoS Comput. Biol.* **10**, e1003665 (2014).
41. Andor, N. et al. Pan-cancer analysis of the extent and consequences of intratumor heterogeneity. *Nat. Med.* **22**, 105–113 (2016).
42. Vandin, F. Computational methods for characterizing cancer mutational heterogeneity. *Front. Genet.* **8**, 83 (2017).
43. Landau, D. A. et al. Evolution and impact of subclonal mutations in chronic lymphocytic leukemia. *Cell* **152**, 714–726 (2013).
44. Lambert, S. R. et al. Key differences identified between actinic keratosis and cutaneous squamous cell carcinoma by transcriptome profiling. *Br. J. Cancer* **110**, 520–529 (2014).
45. Mitsui, H. et al. Gene expression profiling of the leading edge of cutaneous squamous cell carcinoma: IL-24-driven MMP-7. *J. Invest. Dermatol.* **134**, 1418–1427 (2014).
46. Nindl, I. et al. Identification of differentially expressed genes in cutaneous squamous cell carcinoma by microarray expression profiling. *Mol. Cancer* **5**, 30 (2006).
47. Popp, S. et al. Genetic characterization of a human skin carcinoma progression model: from primary tumor to metastasis. *J. Invest. Dermatol.* **115**, 1095–1103 (2000).
48. Garrett, G. L. et al. Incidence of and risk factors for skin cancer in organ transplant recipients in the United States. *JAMA Dermatol.* **153**, 296–303 (2017).
49. Alexandrov, L. B. & Stratton, M. R. Mutational signatures: the patterns of somatic mutations hidden in cancer genomes. *Curr. Opin. Genet. Dev.* **24**, 52–60 (2014).
50. Ming, M., Zhao, B., Qiang, L. & He, Y. Y. Effect of immunosuppressants tacrolimus and mycophenolate mofetil on the keratinocyte UVB response. *Photochem. Photobiol.* **91**, 242–247 (2015).
51. Herman, M. et al. Effect of cyclosporin A on DNA repair and cancer incidence in kidney transplant recipients. *J. Lab. Clin. Med.* **137**, 14–20 (2001).
52. McCarroll, N. et al. An evaluation of the mode of action framework for mutagenic carcinogens case study: Cyclophosphamide. *Environ. Mol. Mutagen.* **49**, 117–131 (2008).
53. O'Donovan, P. et al. Azathioprine and UVA light generate mutagenic oxidative DNA damage. *Science* **309**, 1871–1874 (2005).
54. Karran, P. & Brem, R. Protein oxidation, UVA and human DNA repair. *Dna. Repair. (Amst.)* **44**, 178–185 (2016).
55. Harwood, C. A. et al. PTCH mutations in basal cell carcinomas from azathioprine-treated organ transplant recipients. *Br. J. Cancer* **99**, 1276–1284 (2008).
56. Hofbauer, G. F. et al. Reversal of UVA skin photosensitivity and DNA damage in kidney transplant recipients by replacing azathioprine. *Am. J. Transplant.* **12**, 218–225 (2012).
57. Nowell, C. S. & Radtke, F. Notch as a tumour suppressor. *Nat. Rev. Cancer* **17**, 145–159 (2017).
58. Petrof, G. et al. Mutations in GRHL2 result in an autosomal-recessive ectodermal dysplasia syndrome. *Am. J. Human. Genet.* **95**, 308–314 (2014).
59. Chen, W. et al. Grainyhead-like 2 regulates epithelial plasticity and stemness in oral cancer cells. *Carcinogenesis* **37**, 500–510 (2016).
60. O'Hara, S. P. et al. ETS proto-oncogene 1 transcriptionally up-regulates the cholangiocyst senescence-associated protein cyclin-dependent kinase inhibitor 2A. *J. Biol. Chem.* **292**, 4833–4846 (2017).
61. Stroschein, S. L., Wang, W., Zhou, S., Zhou, Q. & Luo, K. Negative feedback regulation of TGF- $\beta$  signaling by the SnoN oncoprotein. *Science* **286**, 771–774 (1999).
62. Peacock, J. W. et al. SEMA3C drives cancer growth by transactivating multiple receptor tyrosine kinases via Plexin B1. *EMBO Mol. Med.* **10**, 219–238 (2018).
63. Xue, X. et al. Quantitative proteomics identifies STEAP4 as a critical regulator of mitochondrial dysfunction linking inflammation and colon cancer. *Proc. Natl Acad. Sci. USA* **114**, E9608–E9617 (2017).
64. Briso, E. M. et al. Inflammation-mediated skin tumorigenesis induced by epidermal c-Fos. *Genes Dev.* **27**, 1959–1973 (2013).
65. Zhu, Z., Di, J., Lu, Z., Gao, K. & Zheng, J. Rap2B GTPase: structure, functions, and regulation. *Tumour Biol: J. Int. Soc. Oncodev. Biol. Med.* **37**, 7085–7093 (2016).
66. Le Duff, M. et al. Regulation of senescence escape by the cdk4-EZH2-AP2M1 pathway in response to chemotherapy. *Cell Death Dis.* **9**, 199 (2018).
67. Purdie, K. J., Pourreyron, C. & South, A. P. Isolation and culture of squamous cell carcinoma lines. *Methods Mol. Biol.* **731**, 151–159 (2011).
68. Okosun, J. et al. Integrated genomic analysis identifies recurrent mutations and evolution patterns driving the initiation and progression of follicular lymphoma. *Nat. Genet.* **46**, 176–181 (2014).
69. Okosun, J. et al. Recurrent mTORC1-activating RRAGC mutations in follicular lymphoma. *Nat. Genet.* **48**, 183–188 (2016).
70. Koboldt, D. C. et al. VarScan 2: somatic mutation and copy number alteration discovery in cancer by exome sequencing. *Genome Res.* **22**, 568–576 (2012).
71. Ramos, A. H. et al. Oncotator: cancer variant annotation tool. *Hum. Mutat.* **36**, E2423–E2429 (2015).
72. Dayem Ullah, A. Z., Lemoine, N. R. & Chelala, C. SNPnexus: a web server for functional annotation of novel and publicly known genetic variants (2012 update). *Nucl. Acids Res.* **40**, W65–W70 (2012).
73. Gonzalez-Perez, A. et al. IntOGen-mutations identifies cancer drivers across tumor types. *Nat. Methods* **10**, 1081–1082 (2013).
74. Tawana, K. et al. Disease evolution and outcomes in familial AML with germline CEBPA mutations. *Blood* **126**, 1214–1223 (2015).
75. Van Loo, P. et al. Allele-specific copy number analysis of tumors. *Proc. Natl Acad. Sci. USA* **107**, 16910–16915 (2010).
76. Cutts, R. J. et al. O-miner: an integrative platform for automated analysis and mining of -omics data. *Nucl. Acids Res.* **40**, W560–W568 (2012).
77. Ritchie, M. E. et al. limma powers differential expression analyses for RNA-sequencing and microarray studies. *Nucl. Acids Res.* **43**, e47 (2015).
78. Du, P., Kibbe, W. A. & Lin, S. M. lumi: a pipeline for processing Illumina microarray. *Bioinformatics* **24**, 1547–1548 (2008).

## Acknowledgements

G.J.I., K.J.P., V.S., A.P.S., C.A.H., C.M.P., and I.M.L. acknowledge support from Cancer Research UK programme grant (A13044) and a European Research Council Grant (250170). R.G.T. was supported by a Cancer Research UK (Clinical PhD Fellowship/Centre grant (A12976)). L.C.S. was supported by Worldwide Cancer Research grant (11-0788). J.W., A.N. and C.C. acknowledge support from Cancer Research UK Centre of Excellence Award to Barts Cancer Centre [C16420/A18066]. We thank Alan Evans (NHS Tayside, Dundee) and Hasan Rizvi (Barts Health Trust, London) for dermatopathology expertise.

## Author contributions

Participated in research design: G.J.I., J.W., A.N., L.B.A., R.G.T., A.P.S., M.S., C.C., C.A.H., C.M.P., I.M.L. Conducted analysis: G.J.I., J.W., A.N., L.B.A., R.G.T. Collected/processed patient samples: K.J.P., C.A.H., C.M.P. Collated patient details: J.T., S.H., C.A.H.,

C.M.P. Wrote or contributed to the writing of the manuscript: G.J.I, J.W, A.N, R.G.T, V. S., L.C.S., C.A.H., C.M.P., I.M.L.

### Additional information

**Supplementary Information** accompanies this paper at <https://doi.org/10.1038/s41467-018-06027-1>.

**Competing interests:** The authors declare no competing interests.

**Reprints and permission** information is available online at <http://npg.nature.com/reprintsandpermissions/>

**Publisher's note:** Springer Nature remains neutral with regard to jurisdictional claims in published maps and institutional affiliations.



**Open Access** This article is licensed under a Creative Commons Attribution 4.0 International License, which permits use, sharing, adaptation, distribution and reproduction in any medium or format, as long as you give appropriate credit to the original author(s) and the source, provide a link to the Creative Commons license, and indicate if changes were made. The images or other third party material in this article are included in the article's Creative Commons license, unless indicated otherwise in a credit line to the material. If material is not included in the article's Creative Commons license and your intended use is not permitted by statutory regulation or exceeds the permitted use, you will need to obtain permission directly from the copyright holder. To view a copy of this license, visit <http://creativecommons.org/licenses/by/4.0/>.

© The Author(s) 2018