



Shurrab, M., Ko, D. T., Zayed, Y., Navaneethan, S. D., Yadak, N., Yaseen, A., ... Crystal, E. (2018). Outcomes of ICDs and CRTs in patients with chronic kidney disease: a meta-analysis of 21,000 patients. *Journal of Interventional Cardiac Electrophysiology*, 53(1), 123-129.
<https://doi.org/10.1007/s10840-018-0424-1>

Peer reviewed version

Link to published version (if available):
[10.1007/s10840-018-0424-1](https://doi.org/10.1007/s10840-018-0424-1)

[Link to publication record in Explore Bristol Research](#)
PDF-document

This is the author accepted manuscript (AAM). The final published version (version of record) is available online via Springer at <https://link.springer.com/article/10.1007%2Fs10840-018-0424-1> . Please refer to any applicable terms of use of the publisher.

University of Bristol - Explore Bristol Research

General rights

This document is made available in accordance with publisher policies. Please cite only the published version using the reference above. Full terms of use are available:
<http://www.bristol.ac.uk/pure/about/ebr-terms>

**Time-resolved autoantibody profiling facilitates stratification of preclinical type 1
diabetes in children**

Short running title: Modeling of longitudinal autoantibody profiles

David Endesfelder,¹ Wolfgang zu Castell,^{1,2} Ezio Bonifacio,^{3,4} Marian Rewers,⁵ William A. Hagopian,⁶ Jin-Xiong She,⁷ Åke Lernmark,⁸ Jorma Toppari,^{9,10} Kendra Vehik,¹¹ Alistair J. K. Williams,¹² Liping Yu,⁵ Beena Akolkar,¹³ Jeffrey P. Krischer,¹¹ Anette-G. Ziegler,^{4,14,15,16} Peter Achenbach,^{4, 14,15,16} for the TEDDY Study Group*

¹ Scientific Computing Research Unit, Helmholtz Zentrum München, Germany

² Department of Mathematics, Technische Universität München, Germany

³ Center for Regenerative Therapies, Dresden, and Paul Langerhans Institute Dresden,
Technische Universität Dresden, Germany

⁴ German Center for Diabetes Research (DZD), Neuherberg, Germany

⁵ Barbara Davis Center for Childhood Diabetes, University of Colorado, Aurora, CO, USA

⁶ Pacific Northwest Research Institute, Seattle, WA, USA

⁷ Center for Biotechnology and Genomic Medicine, Medical College of Georgia, Augusta
University, Augusta, GA, USA

⁸ Department of Clinical Sciences, Lund University/CRC, Skåne University Hospital SUS,
Malmö, Sweden

⁹ Department of Pediatrics, Turku University Hospital, Turku, Finland

¹⁰ Institute of Biomedicine, Research Centre for Integrative Physiology and Pharmacology,
University of Turku, Turku, Finland

¹¹ Health Informatics Institute, Morsani College of Medicine, University of South Florida,
Tampa, FL, USA

¹² Diabetes and Metabolism, Translational Health Sciences, Southmead Hospital, University
of Bristol, Bristol, UK

¹³ National Institute of Diabetes and Digestive and Kidney Diseases, Bethesda, MD, USA

¹⁴ Institute of Diabetes Research, Helmholtz Zentrum München, German Research Center for
Environmental Health, Ingolstaedter Landstrasse 1, 85764 Munich-Neuherberg, Germany

¹⁵ Forschergruppe Diabetes, Technische Universität München, at Klinikum rechts der Isar,
Munich, Germany

¹⁶ Forschergruppe Diabetes e.V. at Helmholtz Zentrum München, German Research Center
for Environmental Health, Munich-Neuherberg, Germany

*A complete list of the members of the TEDDY Study Group can be found in Supplementary
Data online.

Corresponding authors:

Peter Achenbach, MD; E-mail: peter.achenbach@helmholtz-muenchen.de

Institute of Diabetes Research, Helmholtz Zentrum München, German Research Center for
Environmental Health, Ingolstaedter Landstrasse 1, 85764 Munich-Neuherberg, Germany

Phone: 0049-89-3187 4595, Fax: 0049-89-3187 3144

Wolfgang zu Castell, PhD; E-mail: castell@helmholtz-muenchen.de

Scientific Computing Research Unit, Helmholtz Zentrum München, Munich-Neuherberg,
Germany

Word count: 196 (abstract), 3993 (main text), 1 table, 5 figures

Abstract

Progression to clinical type 1 diabetes varies between children developing beta-cell autoantibodies. Differences in autoantibody patterns could relate to disease progression and etiology. Here we modeled complex longitudinal autoantibody profiles using a novel wavelet-based algorithm. We identified clusters of similar profiles, associated with different types of progression, among 600 children from The Environmental Determinants of Diabetes in the Young birth cohort study who developed persistent autoantibodies against insulin (IAA), GAD (GADA) and/or insulinoma-associated antigen-2 (IA-2A), and were followed prospectively in 3 to 6 months intervals (median follow-up 6.5 years). Among multiple autoantibody-positive children (n=370), progression from seroconversion to clinical diabetes ranged between clusters from 6% (95%CI [0, 17.4]) to 84% (59.2, 93.6) within 5 years. Highest diabetes risks had children who seroconverted early in life (median age <2 years) and developed IAA and IA-2A that were stable-positive on follow-up, and these risks were unaffected by GADA status. Clusters lacking stable-positive GADA responses showed higher proportions of boys and lower frequencies of the HLA-DR3 allele. Our novel algorithm allows refined grouping of beta-cell autoantibody-positive children with distinct progression to clinical type 1 diabetes and provides new opportunities in searching for etiological factors and elucidating complex disease mechanisms.

Clinical type 1 diabetes is commonly preceded by the development of autoantibodies against pancreatic beta-cell antigens such as insulin autoantibodies (IAA), GAD autoantibodies (GADA), insulinoma-associated antigen-2 autoantibodies (IA-2A), and zinc transporter 8 autoantibodies (ZnT8A) (1). In particular, children who have developed two or more of these autoantibody types almost inevitably progress to clinically symptomatic diabetes (2). These findings have led to a new staging of type 1 diabetes, which classifies the presence of advanced beta-cell autoimmunity (multiple autoantibodies) in individuals without diabetic symptoms as an early stage of disease, i.e. presymptomatic type 1 diabetes (3,4). However, the time of progression from presymptomatic to clinical type 1 diabetes varies within multiple autoantibody-positive children (2). Autoantibody characteristics are known to stratify diabetes risk, including the age of seroconversion (2,5-7), antibody number (8-10), titer (6,7,9-12), affinity (13,14), antigen specificity (9,15-17) and epitope binding (9,14,18,19). Nevertheless, the relationship between various longitudinal autoantibody profiles and the rate of progression to diabetes remain yet rarely studied. The Environmental Determinants of Diabetes in the Young (TEDDY) study recently reported that among multiple autoantibody-positive children, those who reverted from GADA-positive to GADA-negative status on follow-up had greater diabetes risk than those with persistent autoantibodies (20). Likewise, clustering of children based on similarities between sequential autoantibody patterns in the German BABYDIAB cohort revealed delayed progression to type 1 diabetes in multiple autoantibody-positive children who became IAA-negative on follow-up (21). However, no study to date has analyzed longitudinal profiles of multiple autoantibodies in due consideration of the timing of changes in qualitative status of the different autoantibodies.

The TEDDY study provides unique opportunities for the analysis of longitudinal autoantibody profiles based on whole time series of autoantibody sequences due to frequent sampling and measurements of type 1 diabetes-associated autoantibodies starting in early infancy (22). This

could refine stratification of progression to clinical diabetes based on similarities in the timing of changes in autoantibody responses. However, the high complexity and multivariate nature of the longitudinal autoantibody data remains a challenging task for analysis. To address this issue, we developed a mathematical algorithm based on Haar wavelet decomposition that enables clustering of children according to similarities in their longitudinal autoantibody profiles. In contrast to most published approaches (2,5-10,12,20), our proposed method does not require a priori definition of relevant autoantibody patterns or seroconversion ages but intrinsically groups children taking longitudinal characteristics into account.

Research Design and Methods

Study population and samples The TEDDY study is a prospective cohort study with the primary goal of identifying environmental causes of type 1 diabetes. It includes six clinical research centers, three in the USA (Colorado, Georgia/Florida, Washington) and three in Europe (Finland, Germany, Sweden). Detailed study design and methods have been published previously (22). TEDDY enrolled 8,676 children who are genetically at-risk for developing type 1 diabetes based on HLA genotypes (23). Children enrolled are monitored prospectively from age 3 months to 4 years with study visits every 3 months and thereafter every 3 or 6 months until age 15 years, depending on autoantibody positivity. Children who are persistently positive for any autoantibody are monitored every 3 months until the age of 15 years or onset of type 1 diabetes. If remission of all autoantibodies occurs for a period of 4 consecutive visits or 1 year, an interval of 6 months becomes effective. Autoantibody-negative children are monitored every 6 months. The study was approved by local Institutional Review or Ethics Boards and monitored by an External Evaluation Committee formed by the National Institutes of Health. All participants provided written informed consent before participation in the genetic screening and in the prospective follow-up.

As of 31 December 2014, 618 children had developed persistent confirmed beta-cell autoantibodies (IAA, GADA and/or IA-2A; 242 single autoantibody-positive, 376 multiple autoantibody-positive) during a median follow-up of 6.5 years (IQR 5.2-8.0 years), and 172 of those had developed diabetes. To avoid bias due to short follow-up profiles, all children with less than five longitudinal samples were excluded from the analysis (n=18). Thus, the current analysis included 600 children (230 single autoantibody-positive and 370 multiple autoantibody-positive), and 165 of those developed diabetes. We analyzed the qualitative status of IAA, GADA and IA-2A over time using 37,047 measurements from birth.

Beta cell autoantibodies IAA, GADA, and IA-2A were measured in two laboratories by radiobinding assays, as previously described (22). In the U.S., all sera were assayed at the Barbara Davis Center for Childhood Diabetes at the University of Colorado Denver; in Europe, all sera were assayed at the University of Bristol, U.K. Both laboratories reported high sensitivity, specificity, and concordance (24). All positive beta-cell autoantibodies and 5% of negative samples were retested in the other reference laboratory and deemed confirmed if concordant. Persistent beta-cell autoimmunity was defined as autoantibody presence on two or more consecutive visits 3 months apart and confirmed in two TEDDY laboratories. Age of seroconversion was defined as the age of the child on the initial date of seroconversion to persistent beta-cell autoimmunity, as previously described (25). A child was considered multiple autoantibody-positive if at least two autoantibodies of IAA, GADA and/or IA-2A were positive in two consecutive samples or if at least two of these autoantibodies were positive in the last available sample prior to the development of type 1 diabetes. An autoantibody response was defined as transiently positive if at least two consecutive samples were autoantibody-positive and then followed by at least two consecutive autoantibody-negative samples or by an autoantibody-negative last available sample. An autoantibody

response was defined as stable-positive if it was not transiently positive. An autoantibody profile was defined as the qualitative status of IAA, GADA, IA-2A (i.e. positive/negative defined by cut-off) at a single time point, building a three-dimensional binary vector. A longitudinal autoantibody profile was defined as the temporal sequence of all single autoantibody profiles of a child. Type 1 diabetes was defined according to American Diabetes Association criteria for diagnosis (3).

Statistical Analysis Based on binary longitudinal autoantibody profiles of IAA, GADA and IA-2A (i.e. temporal sequences of positive or negative autoantibody status of all children), we developed a mathematical algorithm using Haar wavelets (26) to quantify the similarity between longitudinal autoantibody profiles. Subsequently, hierarchical clustering was performed to group children based on similarities. Imputation of data was required whenever samples were missing in the sequence of autoantibody measurements. A missing sample was assigned autoantibody-positive if the last prior sample and the next subsequent sample were positive for the particular autoantibody. In all other cases, missing samples were assigned autoantibody-negative.

Follow-up time and, accordingly, the number of available samples and autoantibody measurements varied considerably between children. We observed a bimodal distribution of follow-up time (Suppl. Fig. 1), with 82 children (69 multiple and 13 single autoantibody-positive) being followed for up to 42 months and 518 children (301 multiple and 217 single autoantibody-positive) being followed for more than 42 and up to 122 months, respectively. Since only shared follow-up periods could be used for pairwise comparison of children, short periods that were shared between children with considerably different lengths of follow-up did not contain sufficient information to achieve reasonable clustering results based on wavelet coefficients alone, as children with qualitatively different longitudinal autoantibody

profiles could be clustered together. We therefore first grouped children with long (more than 42 months) or short (up to 42 months) follow-up periods separately and later integrated the children with short follow-up into the clusters of children with long follow-up by using a combination of similarity of autoantibody patterns and similar timing of autoantibody development.

At first, a Haar wavelet decomposition was applied to autoantibody sequences of children with more than 42 months of follow-up, separately for IAA, GADA, and IA-2A. The resulting wavelet coefficients of the three autoantibodies were then combined into a single vector. The latter was used to estimate Euclidean distances of wavelet coefficients between pairs of children. Hierarchical clustering with complete linkage was performed on the resulting distances, separately for multiple autoantibody-positive and single autoantibody-positive children, respectively. At second, children with shorter follow-up of up to 42 months were assigned to clusters of children with longer follow-up profiles by using a combination of distances based on wavelet coefficients and a recently described algorithm for measuring similarity between sequential autoantibody patterns (21). For both measures, a Student's *t* statistic was calculated to compare the distances of children from each cluster to distances of children from all other clusters. Children with short follow-up were assigned to clusters of children with long follow-up with the maximum of the sum of both measures. The combination of distances from wavelet coefficients and from sequential autoantibody patterns ensured that children with short follow-up times were assigned to clusters with both similar timing of autoantibody appearance and similar longitudinal autoantibody profiles.

Kaplan-Meier survival analysis with log-rank test was used to compare the progression from autoantibody seroconversion to type 1 diabetes between clusters. The time from the age of seroconversion to the age at diagnosis of diabetes or the age at last contact in non-diabetic children was used as event time. Analysis considered censoring for losses to follow-up. The

5-year diabetes-free survival is presented for clusters comprising 10 or more children. Fisher's exact test was used to compare frequencies between groups. All statistical analyses were performed using R version 3.2.2.

Results

Clustering of multiple autoantibody-positive children We hypothesized that clustering of multiple autoantibody-positive children based on their consecutive profiles of IAA, GADA, and IA-2A could provide refined stratification with respect to progression to clinical type 1 diabetes and disease etiopathogenesis, respectively. Clustering based on wavelet coefficients was performed for 370 children who developed multiple beta-cell autoantibodies. The resulting dendrogram (Fig. 1) was used to define 12 multiple autoantibody clusters (mC1-mC12) comprising groups of 12 to 88 children who differed with respect to the age of autoantibody appearance and/or autoantibody profiles on follow-up (Fig. 2). Characteristics of the children in these clusters are summarized in Table 1. The clusters differed considerably with respect to the progression of children from seroconversion to clinical diabetes, ranging from 6% (95%CI [0, 17.4]; cluster mC9) to 84% (59.2, 93.6; mC5) within 5 years (Table 1). In particular, those clusters with the shortest distance to each other in the dendrogram (e.g. mC7 and mC8; Fig. 2) had markedly different diabetes-risks, indicating that the approach could distinguish children with different progression based on relatively small differences in their longitudinal autoantibody profiles. Next, we explored whether the clusters could stratify progression in children with common characteristics such as similar seroconversion age and autoantibody patterns.

Children with seroconversion at very young age. First, we compared clusters of children with similar young age of seroconversion but variable longitudinal autoantibody profiles with respect to differences in their progression to clinical type 1 diabetes. We therefore selected all

clusters with median age of seroconversion <2 years. This resulted in six clusters (Fig. 3A) characterized by the development of either three stable-positive autoantibodies (cluster mC6), or two stable-positive autoantibodies in combination with a transiently positive or negative third autoantibody (clusters mC5, mC10, mC12), or stable-positive GADA (cluster mC11) or IA-2A (cluster mC3) in combination with a transiently positive or negative second and/or third autoantibody, respectively. Regardless of GADA status, children with the combination of stable-positive IAA and IA-2A (mC6 and mC5) had similar 5-year diabetes risks, being significantly higher than the risks in all remaining clusters of children with very young seroconversion age ($P<0.0001$, HR 2.8 (1.9-4.2); Fig. 3B, Table 1). In contrast, the 5-year diabetes risks were not significantly different between clusters of children with the combination of stable-positive GADA and IA-2A (mC10) or IAA and GADA (mC12) and those with just stable-positive GADA (mC11) or IA-2A (mC3), respectively (Fig. 3B, Table 1). However, the overall frequency of diabetes throughout follow-up was higher in clusters with stable-positive IA-2A (mC10 [63%] and mC3 [50%]) as compared to those without (mC12 [32%] and mC11 [21%]; $P=0.002$; Fig. 3C).

Children with similar autoantibody patterns. Second, we compared clusters of children with similar autoantibody patterns but variable age of seroconversion with respect to differences in their progression to clinical type 1 diabetes. We therefore grouped clusters based on autoantibody patterns over time, and then compared clusters within groups according to the median age of seroconversion at <2 years, 2-4 years and >4 years, respectively. This resulted in four groups of three clusters each (Fig. 4A, Suppl. Fig. 2A). Clusters were characterized by the development of either stable-positive IAA, GADA and IA-2A (clusters mC6, mC7, and mC2); stable-positive IA-2A and IAA, or, stable-positive IA-2A alone (clusters mC5, mC8, or mC3, respectively); stable-positive IA-2A and GADA (clusters mC10, mC9, mC4); or stable-positive GADA and IAA, or stable-positive GADA alone (clusters mC12, or mC11, and mC1,

respectively). Within each cluster group, younger age at seroconversion was generally associated with increased 5-year diabetes risk (Fig. 4B-E); with the exception of children in cluster mC3 who seroconverted at median age <2 years, developed stable-positive IA-2A, but lost IAA reactivity on follow-up (Fig. 2, Fig. 4A) and presented with relatively delayed progression to clinical diabetes (Fig. 4C). The most significant effects of younger seroconversion age on diabetes risk were observed among children developing three stable-positive autoantibodies (mC6 vs. mC7/mC2, $P < 0.0001$, HR 5.4 [2.5-11.9]; Fig. 4B), those developing stable-positive IA-2A and IAA (mC5 vs. mC8, $P = 0.02$, HR 2.3 [1.1-4.9]; Fig. 4C), and those developing stable-positive IA-2A and GADA (mC10 vs. mC9/mC4, $P = 0.045$, HR 3.9 [1.0-9.3]; Fig. 4D). Clusters of children with seroconversion at median age <2 years also showed higher overall frequencies of diabetes compared to those with similar autoantibody patterns but older seroconversion age (mC6 vs. mC7/mC2, $P < 0.0001$; mC5 vs. mC8, $P = 0.007$; mC10 vs. mC9/mC4, $P < 0.0001$; Suppl. Fig. 2B). In contrast, the 5-year diabetes risks and overall diabetes frequencies were not statistically different between children who mainly lacked IA-2A and developed stable-positive GADA (mC12 vs. mC11 vs. mC1, $P > 0.05$ for all pairwise comparisons; Fig. 4E, Suppl. Fig. 2B), and this was irrespective of seroconversion age. Of note, the differences in diabetes risk and overall diabetes frequency between clusters of multiple autoantibody-positive children were not explained by ZnT8A status (Suppl. Fig. 2C).

Features associated with autoantibody patterns. Clusters lacking stable-positive GADA responses (clusters mC5, mC8, mC3) showed higher proportions of boys ($P = 0.002$; Fig. 5A) and lower frequencies of the HLA-DR3 allele ($P = 0.0002$; Fig. 5B) compared to all other multiple autoantibody clusters.

Clustering of single autoantibody-positive children To analyze characteristics associated with different patterns of autoantibody reactivity against single beta-cell antigens, 230 single autoantibody-positive children were clustered based on wavelet decomposition of longitudinal time series of IAA, GADA, and IA-2A. The resulting dendrogram (Suppl. Fig. 3) was used to define nine single autoantibody clusters (sC1-sC9) containing groups of 5 to 50 children who differed with respect to their longitudinal autoantibody profiles (Suppl. Fig. 4). Characteristics of the children in these clusters are summarized in the online appendix (Suppl. Table 1).

Children with stable-positive GADA responses were clustered into two groups (clusters sC1 and sC2) that differed with respect to the age of seroconversion ($P < 0.0001$; Suppl. Table 1) but had similar 5-year diabetes risks (Suppl. Fig. 5A,B). Compared to clusters sC1 and sC2 combined, significantly increased 5-year diabetes risk was observed for cluster sC5 consisting of children with stable-positive IAA ($P = 0.008$, HR 4.3 [1.3-13.5]; Suppl. Table 1, Suppl. Fig. 5A,B). None of the children in clusters characterized by either transiently positive GADA (clusters sC3 and sC6) or IAA (clusters sC7, sC8, sC9) developed diabetes on follow-up (Suppl. Table 1, Suppl. Fig. 5A,B). Clusters of children with transiently positive IA-2A were not observed.

Differences were seen in positivity for ZnT8A between clusters (Suppl. Table 1, Suppl. Fig. 5C). While 80% (4 of 5) of children in the small cluster sC4 (stable-positive IA-2A) developed ZnT8A, only 37% (15 of 41) and 12% (4 of 33) of children in clusters sC1 and sC2 (stable-positive GADA), and 10% (2 of 21) of children in cluster sC5 (stable-positive IAA) developed ZnT8A, respectively.

HLA genotype was associated with single autoantibody clusters. Of note, HLA DR3-DQ2/DR3-DQ2 was absent in clusters of children with stable-positive IA-2A (sC4) or IAA (sC5). In contrast, HLA DR3-DQ2/DR3-DQ2 was relatively frequent among clusters of children with stable-positive GADA (sC1 38%, sC2 24%) or transiently positive GADA (sC3

44%, sC6 24%; Suppl. Table 1, Suppl. Fig. 5D). Clusters with stable-positive GADA (sC1 and sC2) showed increased frequencies of the HLA-DR3 allele compared to clusters with stable-positive IAA (sC5, $P=0.003$; Suppl. Fig. 5D) or IA-2A (sC4, $P=0.05$; Suppl. Fig. 5D), respectively.

Discussion

In the current study, we have tackled the challenge of combined analysis of complex longitudinal profiles of multiple biomarkers, namely three different types of beta-cell autoantibodies, in a time-resolved fashion. Specifically, we considered the age and sequence of changes in the qualitative status (i.e. positive or negative) of each autoantibody in each serum sample collected throughout follow-up of 600 children who developed persistent confirmed IAA, GADA and/or IA-2A while participating in the TEDDY study, comprising more than 37,000 antibody measurements. Using a novel wavelet-based algorithm we were able to define similarities between the longitudinal autoantibody profiles of children, including the temporal resolution of changes in autoantibody patterns. Based on these similarities, we could then perform hierarchical clustering of single and multiple autoantibody-positive children to define clusters that were associated with markedly different progression rates from seroconversion to clinical diabetes, particularly among those children with multiple autoantibodies, ranging from 6% to 84% within 5 years. Furthermore, we could pinpoint specific autoantibody patterns and characteristics related to different progression rates. We suggest that our approach holds great potential for refined explorations into the underlying etiology of different phenotypes of beta-cell autoimmunity.

Strengths of our study include the unique and well-defined cohort, and the use of an innovative analytical approach. The TEDDY study is the largest prospective study to date that follows genetically at-risk children for the development of beta-cell autoimmunity and type 1

diabetes (22). TEDDY has collected various possible exposures that could be important to the appearance and progression of beta-cell autoimmunity (27-32). Associations with genetic risk factors and age of appearance, type and levels of beta-cell autoantibodies, and progression to clinical type 1 diabetes have recently been reported (7,20,25,33-35). This current analysis adds to these previous studies in a new manner in that our novel approach is data-driven and considers changes in autoantibody characteristics at the time they occur.

We made use of Haar wavelet coefficients (26) to define similarities between longitudinal profiles of children. This approach holds a number of advantages for the analysis of prospective study data. However, it has not yet been used in prospective studies in type 1 diabetes. Wavelets enable a time-frequency type decomposition of time series data. Applying an iterative scheme, coefficients determined at the earlier steps capture 'high-frequency' information in the data such as on-and-off switches, whereas coefficients at later iteration steps allow identifying long-term trends in time series data. Wavelets are therefore a powerful tool to characterize dynamic temporal patterns in autoantibody progression. Still, intrinsic characteristics of the method need to be considered. Firstly, using Haar wavelets (i.e. a decomposition based on piecewise constant functions) might not provide the best orders of approximation, while at the same time being computationally very efficient. Nevertheless, for the type of data analyzed in this study, Haar wavelet coefficients turned out to capture the information well enough and no wavelets with higher order moments were needed. Secondly, in order to compare longitudinal autoantibody profiles of children, time series of differing lengths had to be cut down to the length of the shorter series. Thus, in particular when comparing a very short time series with a longer one, the comparison based on wavelets ignores a substantial part of the information provided by the longer series. We compensated for this deficiency in our analysis by combining wavelet decomposition with another qualitative algorithm provided previously (21). Thirdly, the method also requires that time

series have to be sampled equidistantly. While this is the case in the TEDDY study, other decompositions would have to be applied for scattered data.

We have focused our analysis on the group of multiple beta-cell autoantibody-positive children. Considerable differences exist between children at this presymptomatic stage of type 1 diabetes with respect to the time until clinical disease onset (2,7,36). A well-known risk factor for faster progression to clinical diabetes among autoantibody-positive individuals is young age of seroconversion (5-7,34). It is therefore remarkable that we could a) distinguish different rates of progression among clusters of multiple autoantibody-positive children (n=217) who all seroconverted at very young age, and b) link differences in progression to defined longitudinal autoantibody profiles. The highest risks were seen in 115 children who developed both stable-positive IAA and IA-2A responses early in life (clusters mC6 and mC5). Interestingly, high risk in those children was not influenced by the presence (mC6) or absence (mC5) of stable-positive GADA responses. On the contrary, risk was significantly lower for 102 children who seroconverted early and developed multiple autoantibodies but not stable-positive IAA and IA-2A. This is in line with our previous observation in the BABYDIAB cohort that losing IAA reactivity is associated with delayed progression to type 1 diabetes in multiple autoantibody-positive children (21). Amongst clusters of children with similar autoantibody patterns, younger age of seroconversion was associated with faster progression rate. An exception to this rule were children who developed stable-positive GADA but lacked IA-2A responses, and progressed relatively slowly regardless of seroconversion age.

Of note, in order to develop an autoantibody response to GAD that was stable-positive over time and, therefore, presumably relevant for the individual immune phenotype and disease pathogenesis, the majority of those children appeared to require HLA-DR3. Associations between HLA-DR and beta-cell autoantibody specificity have been reported (13,14,25,37-39).

In particular, the TEDDY study has recently demonstrated that the appearance of either IAA or GADA as the first autoantibody in children was strongly influenced by the presence of HLA-DR4 or, respectively, HLA-DR3 (25,35). Our current data suggest an influence of HLA genotype on longitudinal autoantibody profiles. Likewise, male sex has been associated with IAA only as the first autoantibody in children (35). We have observed now a predominance of boys for longitudinal autoantibody profiles lacking stable-positive GADA responses, which requires further attention.

As limitation to our study, longitudinal ZnT8A profiles could not be included in the current clustering analyses due to incomplete time series of ZnT8A measurements, which otherwise would have caused considerable reduction in sample size. However, we considered the overall ZnT8A status of each child in our analysis. As expected, this revealed that some children in the ‘single’ autoantibody clusters in fact had developed ZnT8A as second positive beta-cell autoantibody. The strongest effect was seen in the small cluster sC4, characterized by stable-positive IA-2A, in which four of five children (all male, carrying HLA-DR4) were ZnT8A-positive and two have progressed to clinical diabetes. This illustrates that certain low frequency immune patterns could be highly disease-relevant. With respect to longitudinal GADA patterns our study in children could underestimate their effect on diabetes-risk given that GADA is associated with older onset type 1 diabetes (40). Another limitation is that the study population is highly selected for HLA-conferred risk of type 1 diabetes (23). Validation in a study population that is not preselected, and cohorts of individuals seroconverting to beta-cell autoantibodies at older age is therefore necessary to ensure wider applicability of our observations.

Altogether, our data support the notion that the individual pattern of beta-cell autoantibodies, i.e. the pattern of main target autoantigens, as well as the timing of their appearance, dynamic and progression to diabetes is influenced by gene-environmental interactions. It is possible

that certain disease-promoting factors or conditions could act on genetically predisposed individuals only within certain age windows. Identifying such etiological factors could potentially pave the way for new prevention therapies, and we believe that our analytical approach could prove useful in that search.

In conclusion, our novel wavelet-based clustering algorithm allows refined grouping of multiple beta-cell autoantibody-positive children. The data-driven approach can identify groups of children with distinct progression to clinical type 1 diabetes and provides new opportunities in elucidating complex disease mechanisms.

Acknowledgments

A special acknowledgment goes to all families participating in the TEDDY study.

Funding. This work was funded by U01 DK63829, U01 DK63861, U01 DK63821, U01 DK63865, U01 DK63863, U01 DK63836, U01 DK63790, UC4 DK63829, UC4 DK63861, UC4 DK63821, UC4 DK63865, UC4 DK63863, UC4 DK63836, UC4 DK95300, UC4 DK100238, UC4 DK106955, and Contract No. HHSN267200700014C from the National Institute of Diabetes and Digestive and Kidney Diseases (NIDDK), National Institute of Allergy and Infectious Diseases (NIAID), National Institute of Child Health and Human Development (NICHD), National Institute of Environmental Health Sciences (NIEHS), Juvenile Diabetes Research Foundation (JDRF), and Centers for Disease Control and Prevention (CDC). This work supported in part by the NIH/NCATS Clinical and Translational Science Awards to the University of Florida (UL1 TR000064) and the University of Colorado (UL1 TR001082).

Duality of interest. The authors declare that there is no duality of interest associated with this manuscript.

Contribution statement. All authors attest to meeting the International Committee of Medical Journal Editors uniform requirements for authorship by making substantial contributions to conception and design of this paper; acquisition, analyzing, and interpreting the data; drafting or revising the article for intellectual content; and giving final approval of the published version. P.A. and W.z.C. proposed the analysis. W.z.C. and D.E. developed the algorithm. D.E. performed the analysis. P.A., D.E., and W.z.C. interpreted the findings, and wrote the manuscript. E.B., M.R., W.A.H., J.-X.S., Å.L., J.T., K.V., A.J.K.W., L.Y., B.A., J.P.K., and A.-G.Z. contributed to the acquisition, analysis, or interpretation of data. J.P.K., Å.L., W.A.H., M.R., J.-X.S., J.T., A.-G.Z., and B.A. designed the TEDDY study, and reviewed and edited the manuscript for intellectual content. E.B., K.V., A.J.K.W., and L.Y. reviewed and edited the manuscript for intellectual content. P.A. and W.z.C. are the guarantors of this work and, as such, had full access to all the data in the study and take responsibility for the integrity of the data and the accuracy of the data analysis.

References

1. Regnell SE, Lernmark A. Early prediction of autoimmune (type 1) diabetes. *Diabetologia* 2017;60:1370-1381
2. Ziegler AG, Rewers M, Simell O, et al. Seroconversion to multiple islet autoantibodies and risk of progression to diabetes in children. *JAMA* 2013;309:2473-2479
3. American Diabetes Association. 2. Classification and Diagnosis of Diabetes: Standards of Medical Care in Diabetes-2018. *Diabetes Care* 2018;41:S13-S27
4. Insel RA, Dunne JL, Atkinson MA, et al. Staging presymptomatic type 1 diabetes: a scientific statement of JDRF, the Endocrine Society, and the American Diabetes Association. *Diabetes Care* 2015;38:1964-1974
5. Hummel M, Bonifacio E, Schmid S, Walter M, Knopff A, Ziegler AG. Brief communication: early appearance of islet autoantibodies predicts childhood type 1 diabetes in offspring of diabetic parents. *Ann Intern Med* 2004;140:882-886
6. Parikka V, Nanto-Salonen K, Saarinen M, et al. Early seroconversion and rapidly increasing autoantibody concentrations predict prepubertal manifestation of type 1 diabetes in children at genetic risk. *Diabetologia* 2012;55:1926-1936
7. Steck AK, Vehik K, Bonifacio E, et al. Predictors of Progression From the Appearance of Islet Autoantibodies to Early Childhood Diabetes: The Environmental Determinants of Diabetes in the Young (TEDDY). *Diabetes Care* 2015;38:808-813
8. Bingley PJ, Christie MR, Bonifacio E, et al. Combined analysis of autoantibodies improves prediction of IDDM in islet cell antibody-positive relatives. *Diabetes* 1994;43:1304-1310
9. Achenbach P, Warncke K, Reiter J, et al. Stratification of type 1 diabetes risk on the basis of islet autoantibody characteristics. *Diabetes* 2004;53:384-392
10. Orban T, Sosenko JM, Cuthbertson D, et al. Pancreatic islet autoantibodies as predictors of type 1 diabetes in the Diabetes Prevention Trial-Type 1. *Diabetes Care* 2009;32:2269-2274
11. Bonifacio E, Bingley PJ, Shattock M, et al. Quantification of islet-cell antibodies and prediction of insulin-dependent diabetes. *Lancet* 1990;335:147-149
12. Sosenko JM, Skyler JS, Palmer JP, et al. The prediction of type 1 diabetes by multiple autoantibody levels and their incorporation into an autoantibody risk score in relatives of type 1 diabetic patients. *Diabetes Care* 2013;36:2615-2620
13. Achenbach P, Koczwara K, Knopff A, Naserke H, Ziegler AG, Bonifacio E. Mature high-affinity immune responses to (pro)insulin anticipate the autoimmune cascade that leads to type 1 diabetes. *J Clin Invest* 2004;114:589-597
14. Mayr A, Schlosser M, Grober N, et al. GAD autoantibody affinity and epitope specificity identify distinct immunization profiles in children at risk for type 1 diabetes. *Diabetes* 2007;56:1527-1533
15. Decochez K, De Leeuw IH, Keymeulen B, et al. IA-2 autoantibodies predict impending type I diabetes in siblings of patients. *Diabetologia* 2002;45:1658-1666
16. Achenbach P, Bonifacio E, Williams AJ, et al. Autoantibodies to IA-2beta improve diabetes risk assessment in high-risk relatives. *Diabetologia* 2008;51:488-492
17. De Grijse J, Asanghanwa M, Nouthe B, et al. Predictive power of screening for antibodies against insulinoma-associated protein 2 beta (IA-2beta) and zinc transporter-8 to select first-degree relatives of type 1 diabetic patients with risk of rapid progression to clinical onset of the disease: implications for prevention trials. *Diabetologia* 2010;53:517-524
18. Hawa MI, Fava D, Medici F, et al. Antibodies to IA-2 and GAD65 in type 1 and type 2 diabetes: isotype restriction and polyclonality. *Diabetes Care* 2000;23:228-233

19. Williams AJ, Lampasona V, Wyatt R, et al. Reactivity to N-Terminally Truncated GAD65(96-585) Identifies GAD Autoantibodies That Are More Closely Associated With Diabetes Progression in Relatives of Patients With Type 1 Diabetes. *Diabetes* 2015;64:3247-3252
20. Vehik K, Lynch KF, Schatz DA, et al. Reversion of beta-Cell Autoimmunity Changes Risk of Type 1 Diabetes: TEDDY Study. *Diabetes Care* 2016;39:1535-1542
21. Endesfelder D, Hagen M, Winkler C, et al. A novel approach for the analysis of longitudinal profiles reveals delayed progression to type 1 diabetes in a subgroup of multiple-islet-autoantibody-positive children. *Diabetologia* 2016;59:2172-2180
22. TEDDY Study Group. The Environmental Determinants of Diabetes in the Young (TEDDY) study: study design. *Pediatr Diabetes* 2007;8:286-298
23. Hagopian WA, Erlich H, Lernmark A, et al. The Environmental Determinants of Diabetes in the Young (TEDDY): genetic criteria and international diabetes risk screening of 421 000 infants. *Pediatr Diabetes* 2011;12:733-743
24. Bonifacio E, Yu L, Williams AK, et al. Harmonization of glutamic acid decarboxylase and islet antigen-2 autoantibody assays for national institute of diabetes and digestive and kidney diseases consortia. *Journal Clin Endocrinol Metab* 2010;95:3360-3367
25. Krischer JP, Lynch KF, Schatz DA, et al. The 6 year incidence of diabetes-associated autoantibodies in genetically at-risk children: the TEDDY study. *Diabetologia* 2015;58:980-987
26. Haar A. Zur Theorie der orthogonalen Funktionensysteme. *Mathematische Annalen* 1910;69:331-371
27. Uusitalo U, Lee HS, Andren Aronsson C, et al. Early Infant Diet and Islet Autoimmunity in the TEDDY Study. *Diabetes Care* 2018;41:522-530
28. Lynch KF, Lee HS, Torn C, et al. Gestational respiratory infections interacting with offspring HLA and CTLA-4 modifies incident beta-cell autoantibodies. *J Autoimmun* 2018;86:93-103
29. Norris JM, Lee HS, Frederiksen B, et al. Plasma 25-Hydroxyvitamin D Concentration and Risk of Islet Autoimmunity. *Diabetes* 2018;67:146-154
30. Lonrot M, Lynch KF, Elding Larsson H, et al. Respiratory infections are temporally associated with initiation of type 1 diabetes autoimmunity: the TEDDY study. *Diabetologia* 2017;60:1931-1940
31. Hummel S, Beyerlein A, Tamura R, et al. First Infant Formula Type and Risk of Islet Autoimmunity in The Environmental Determinants of Diabetes in the Young (TEDDY) Study. *Diabetes Care* 2017;40:398-404
32. Uusitalo U, Liu X, Yang J, et al. Association of Early Exposure of Probiotics and Islet Autoimmunity in the TEDDY Study. *JAMA Pediatr* 2016;170:20-28
33. Sharma A, Liu X, Hadley D, et al. Identification of non-HLA genes associated with development of islet autoimmunity and type 1 diabetes in the prospective TEDDY cohort. *J Autoimmun* 2018;89:90-100
34. Krischer JP, Liu X, Lernmark A, et al. The Influence of Type 1 Diabetes Genetic Susceptibility Regions, Age, Sex, and Family History on the Progression From Multiple Autoantibodies to Type 1 Diabetes: A TEDDY Study Report. *Diabetes* 2017;66:3122-3129
35. Krischer JP, Lynch KF, Lernmark A, et al. Genetic and Environmental Interactions Modify the Risk of Diabetes-Related Autoimmunity by 6 Years of Age: The TEDDY Study. *Diabetes Care* 2017;40:1194-1202
36. Achenbach P, Hummel M, Thumer L, Boerschmann H, Hofelmann D, Ziegler AG. Characteristics of rapid vs slow progression to type 1 diabetes in multiple islet autoantibody-positive children. *Diabetologia* 2013;56:1615-1622

37. Graham J, Hagopian WA, Kockum I, et al. Genetic effects on age-dependent onset and islet cell autoantibody markers in type 1 diabetes. *Diabetes* 2002;51:1346-1355
38. Vermeulen I, Weets I, Asanghanwa M, et al. Contribution of antibodies against IA-2beta and zinc transporter 8 to classification of diabetes diagnosed under 40 years of age. *Diabetes Care* 2011;34:1760-1765
39. Ilonen J, Hammais A, Laine AP, et al. Patterns of beta-cell autoantibody appearance and genetic associations during the first years of life. *Diabetes* 2013;62:3636-3640
40. Bingley PJ. Clinical applications of diabetes antibody testing. *J Clin Endocrinol Metab* 2010;95:25-33

Table 1. Distribution of features among the multiple autoantibody clusters (mC1-mC12).

T1D, type 1 diabetes; C-Section, Caesarean section; IQR, interquartile range.

Autoantibody Cluster	all	mC1	mC2	mC3	mC4	mC5	mC6	mC7	mC8	mC9	mC10	mC11	mC12
N	370	35	30	12	21	27	88	27	24	16	30	19	41
Age (years) of seroconversion median (IQR)	2.0 (1.1-3.1)	4.0 (3.0-4.7)	4.2 (2.8-5.5)	1.0 (0.8-2.0)	7.2 (3.3-7.5)	1.0 (0.8-1.1)	1.4 (0.8-1.8)	3.3 (3.0-3.9)	2.4 (1.8-2.9)	2.5 (2.3-3.0)	1.7 (1.0-2.2)	1.6 (1.1-2.0)	1.5 (1.0-2.3)
T1D prevalence (%)	41	11	17	50	14	85	66	7	46	12	63	21	32
5-year T1D risk % (95% CI)	44 (38-49)	12 (0-23)	28 (0-49)	51 (5-75)	26 (0-49)	84 (59-94)	63 (51-72)	9 (0-21)	53 (21-72)	6 (0-17)	41 (20-57)	22 (0-39)	40 (19-56)
Maternal T1D (%)	6	14	10	8	0	7	5	4	4	6	3	0	5
HLA DR3/DR3 (%)	7	9	3	8	5	0	3	4	0	31	17	21	7
HLA DR3/DR4 (%)	57	69	63	33	48	44	64	56	38	56	43	68	63
HLA DR4/DR4 (%)	18	17	23	33	14	15	10	26	42	13	27	0	15
HLA DR4/DRx	18	6	10	25	33	41	22	15	21	0	13	11	15
ZnT8A (%)	62	51	73	83	52	44	58	74	71	75	77	47	56
C-Section (%)	22	26	20	50	24	37	17	26	17	25	20	16	20
Male (%)	56	57	50	83	52	74	55	52	67	69	50	47	41

Figure Legends

Figure 1. Hierarchical clustering results for longitudinal autoantibody profiles of 370 children who developed multiple beta-cell autoantibodies. The dendrogram is divided into 12 multiple autoantibody clusters (mC1-mC12). Each column represents the follow-up time from birth for one child. The qualitative status of IAA, GADA and IA-2A, respectively, is indicated by color (red = antibody-positive; blue = antibody-negative) with respect to the age at antibody measurement.

Figure 2. Aggregated longitudinal profiles of IAA, GADA, and IA-2A are shown for children of multiple autoantibody clusters (mC1-mC12). For each cluster, the percentage of children positive for the respective autoantibody is indicated by color (white: 0% positive; red: 100% positive) with respect to age. The blue and green lines indicate the age until which >50% and >25% of children in the cluster were followed, respectively. Autoantibody profiles are plotted until only two children in the cluster remained in follow-up.

Figure 3. Characteristics of clusters of multiple autoantibody-positive children with seroconversion at very young age (median age <2 years). For each cluster is shown: **(A)** the percentage of children who were stable-positive, transiently positive, or negative on follow-up for IAA, GADA and IA-2A, respectively; **(B)** the cumulative diabetes-free survival from autoantibody seroconversion; **(C)** the overall frequency of diabetes throughout follow-up.

Figure 4. Progression to type one diabetes among clusters of multiple autoantibody-positive children with similar autoantibody characteristics but variable age of seroconversion. Clusters are grouped into four groups of three clusters each, based on similarity of autoantibody profiles. For clusters of each group is shown: **(A)** the percentage of children who were stable-

positive, transiently positive, or negative on follow-up for IAA, GADA and IA-2A, respectively; **(B-E)** the cumulative diabetes-free survival from autoantibody seroconversion.

Figure 5. The proportions of boys **(A)** and HLA-DR genotypes **(B)** are shown for multiple autoantibody clusters (mC1-mC12) grouped into four groups of three clusters each, based on similarity of autoantibody profiles. The cluster group mC5, mC8, mC3 comprised a significantly higher proportion of boys ($P=0.002$) and lower frequency of HLA-DR3 ($P=0.0002$) compared to the other cluster groups.

Figure 3B

Diabetes

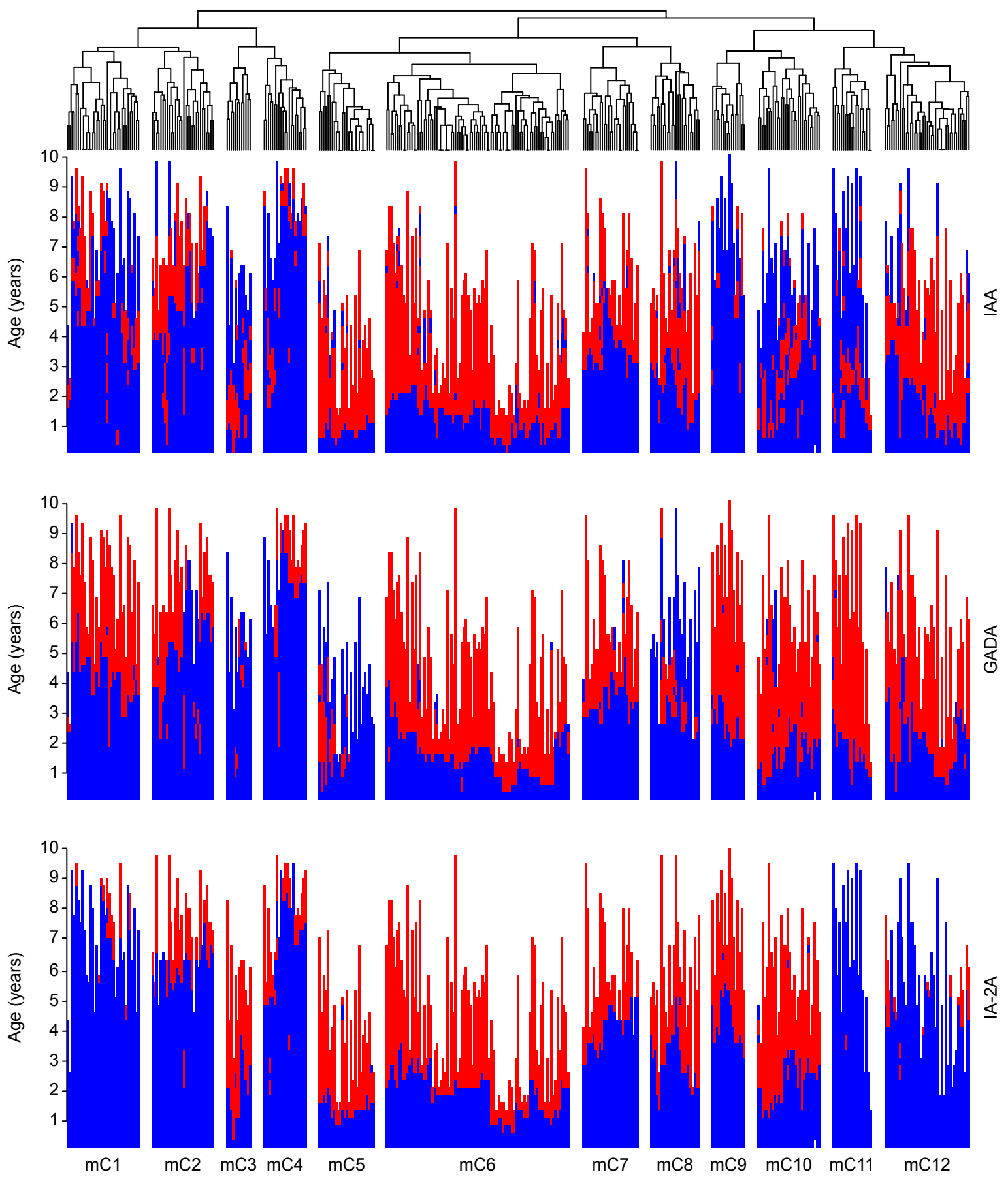
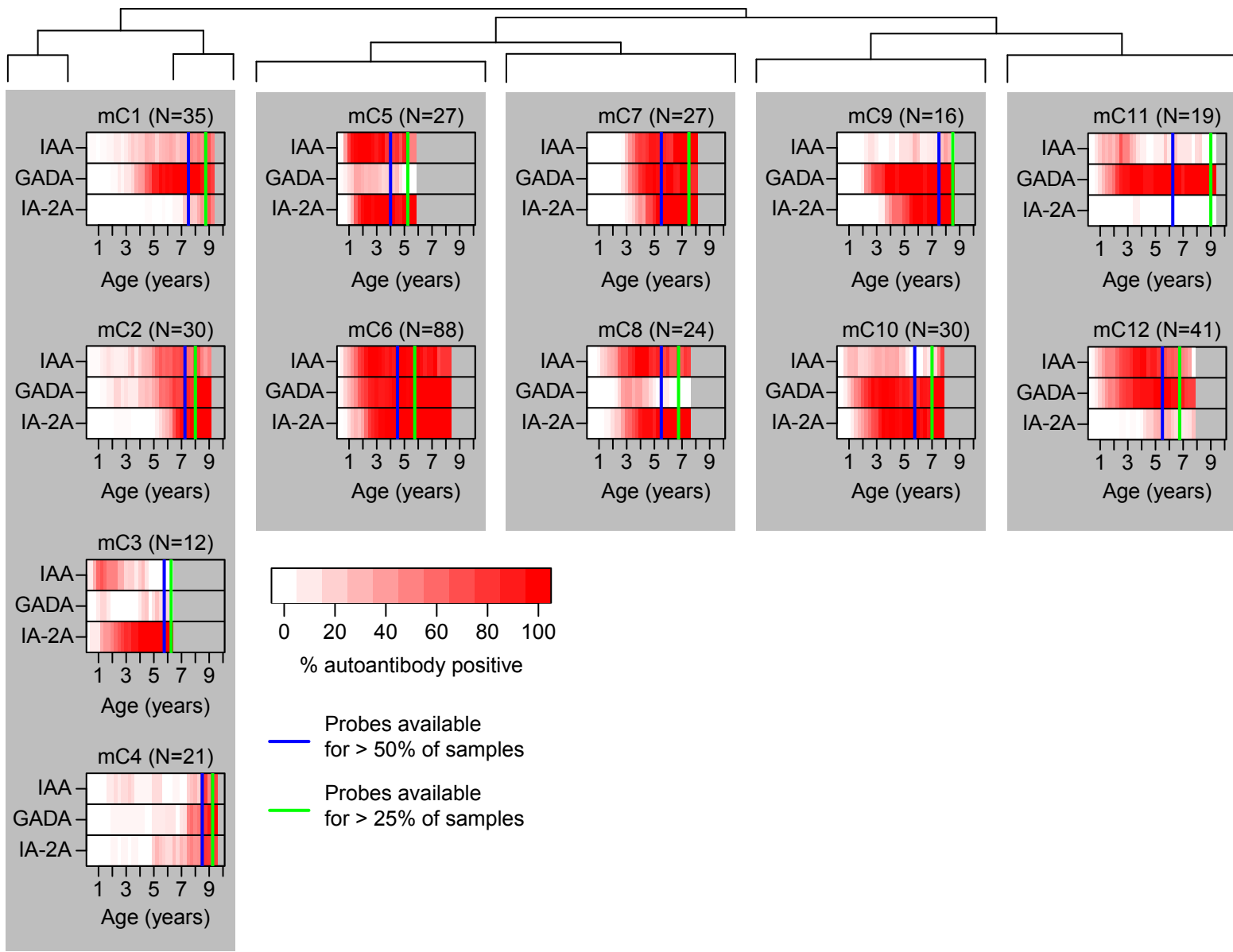
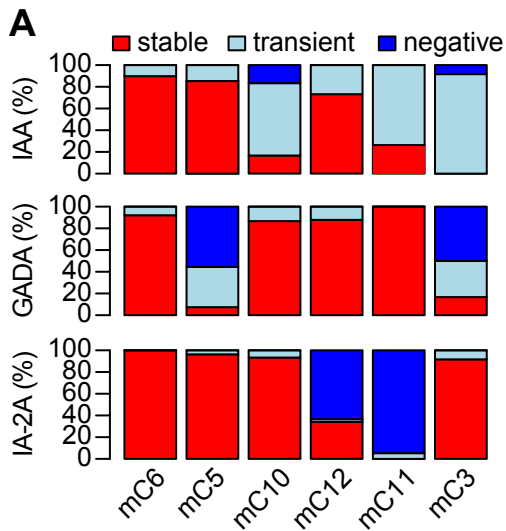


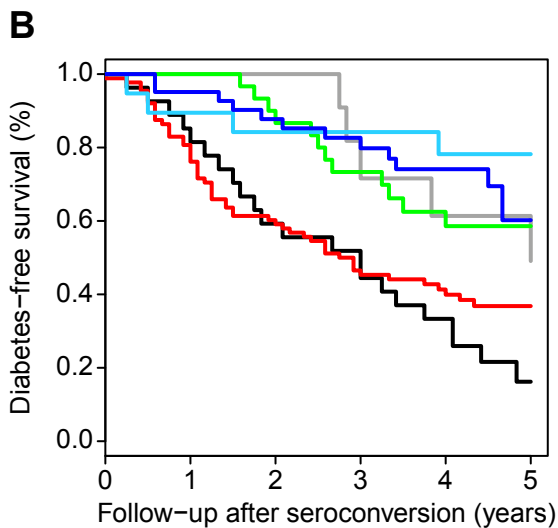
Figure 2





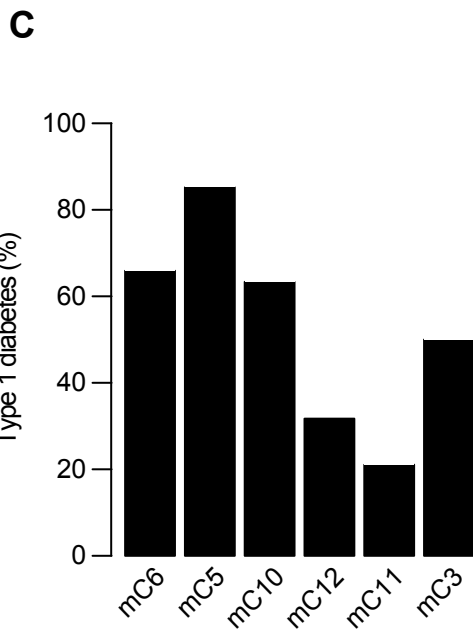
Characteristic	Cluster	age (*)
Stable IAA & GADA & IA-2A	mC6	< 2 years
Stable IA-2A & IAA	mC5	< 2 years
Stable IA-2A & GADA	mC10	< 2 years
Stable GADA & IAA	mC12	< 2 years
Stable GADA	mC11	< 2 years
Stable IA-2A	mC3	< 2 years

(*) median seroconversion age

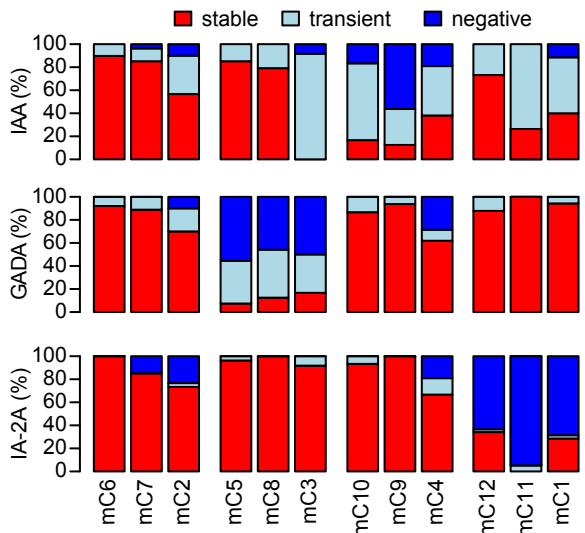


Number at risk:

	0	1	2	3	4	5
mC6	88	71	53	39	29	16
mC5	27	23	16	14	9	3
mC10	30	30	27	22	16	13
mC12	41	39	35	29	21	10
mC11	19	17	16	16	12	10
mC3	12	12	12	8	6	5



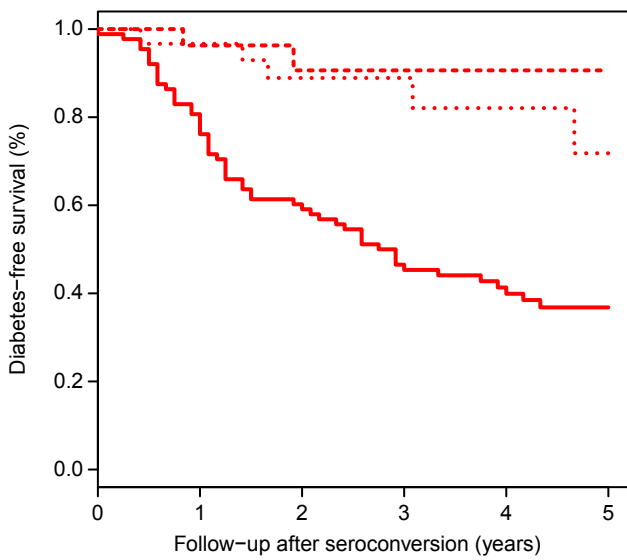
A



Characteristic	Cluster	age (*)
Stable IAA & GADA & IA-2A	mC6	< 2 years
Stable IAA & GADA & IA-2A	mC7	2-4 years
Stable IAA & GADA & IA-2A	mC2	> 4 years
Stable IA-2A & IAA	mC5	< 2 years
Stable IA-2A & IAA	mC8	2-4 years
Stable IA-2A	mC3	< 2 years
Stable IA-2A & GADA	mC10	< 2 years
Stable IA-2A & GADA	mC9	2-4 years
Stable IA-2A & GADA	mC4	> 4 years
Stable GADA & IAA	mC12	< 2 years
Stable GADA	mC11	< 2 years
Stable GADA	mC1	> 4 years

(*) median seroconversion age

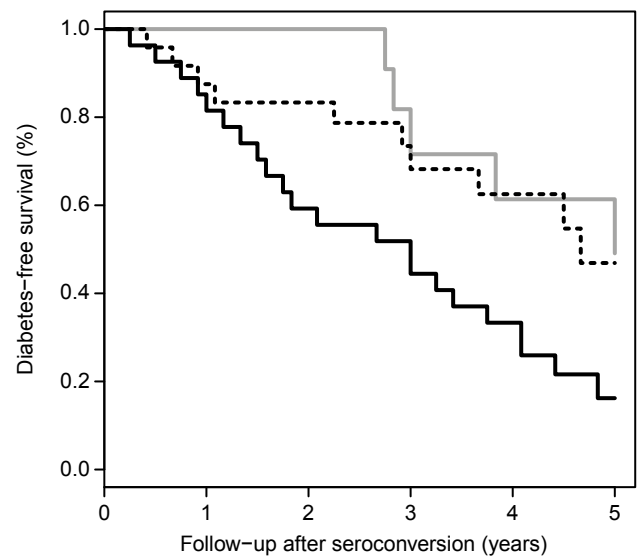
B



Number at risk:

	0	1	2	3	4	5
mC6	88	71	53	39	29	16
mC7	27	25	16	11	8	5
mC2	30	28	21	14	11	5

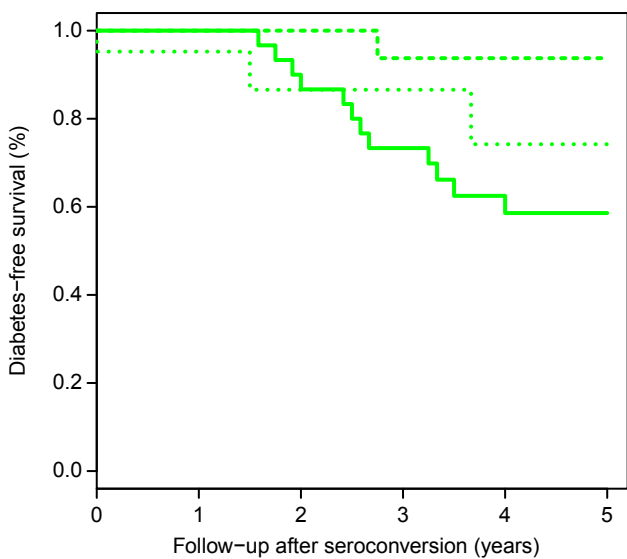
C



Number at risk:

	0	1	2	3	4	5
mC5	27	23	16	14	9	3
mC8	24	21	19	14	9	5
mC3	12	12	12	8	6	5

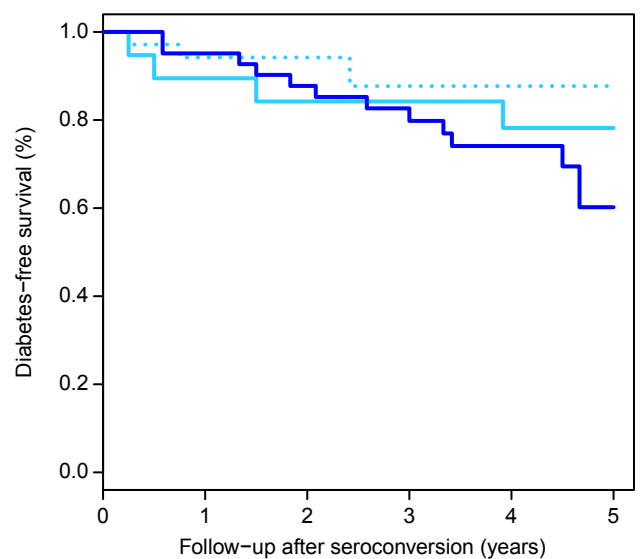
D



Number at risk:

	0	1	2	3	4	5
mC10	30	30	27	22	16	13
mC9	16	16	16	14	11	8
mC4	21	15	10	8	6	5

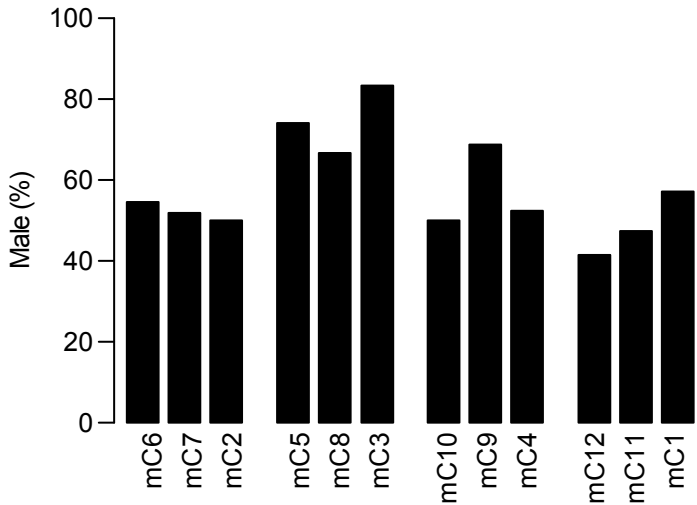
E



Number at risk:

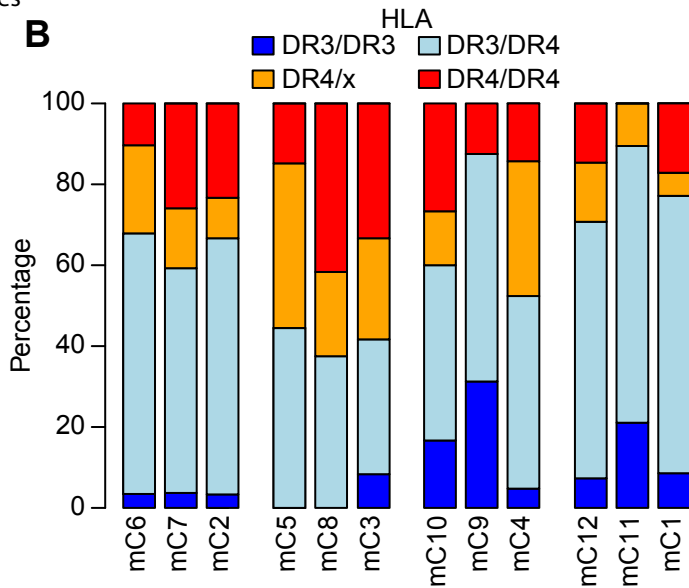
	0	1	2	3	4	5
mC12	41	39	35	29	21	10
mC11	19	17	16	16	12	10
mC1	35	31	30	23	14	8

A



Diabetes

B



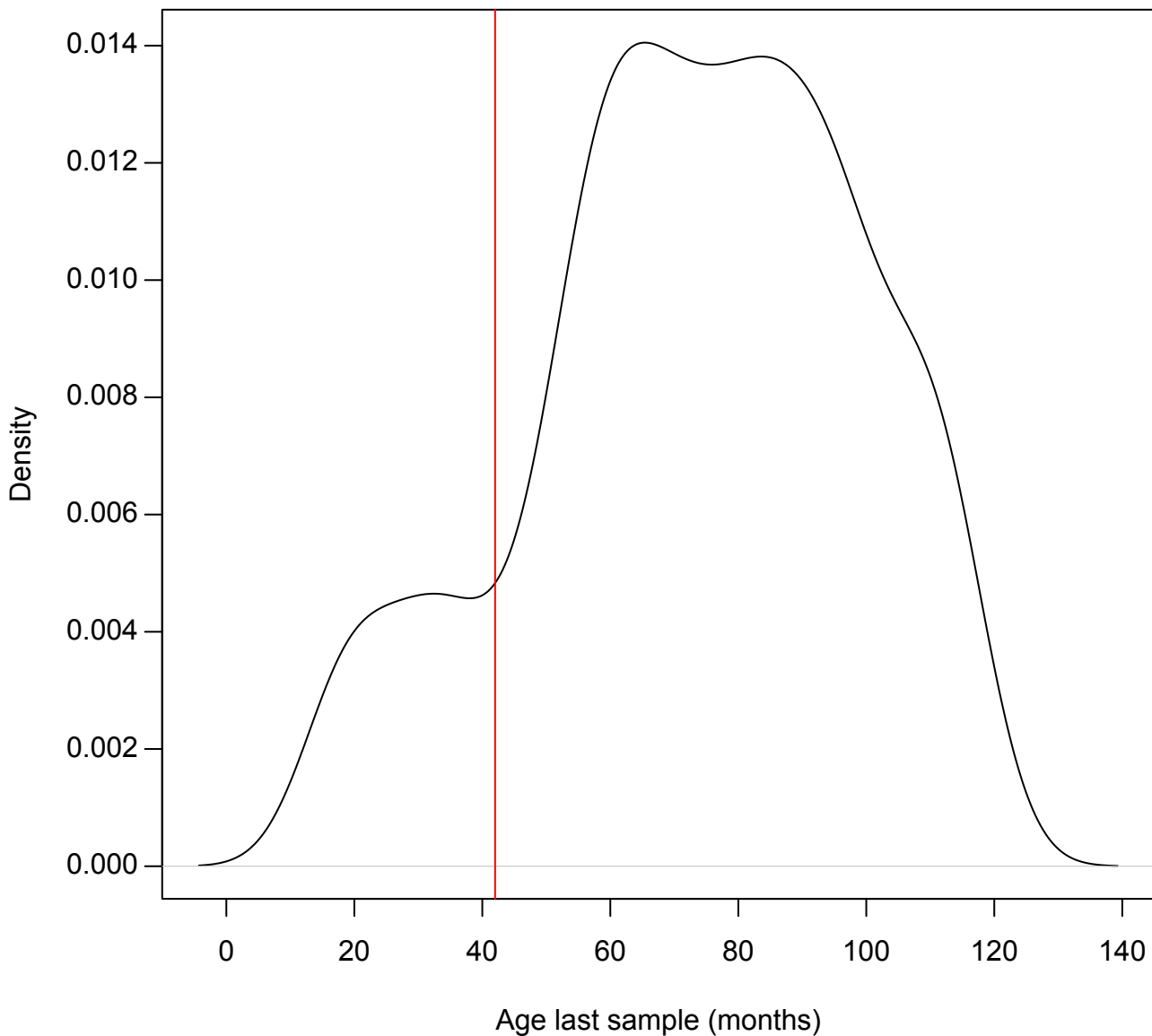
Supplementary Material

1. Supplementary Table 1
2. Supplementary Figure 1
3. Supplementary Figure 2
4. Supplementary Figure 3
5. Supplementary Figure 4
6. Supplementary Figure 5

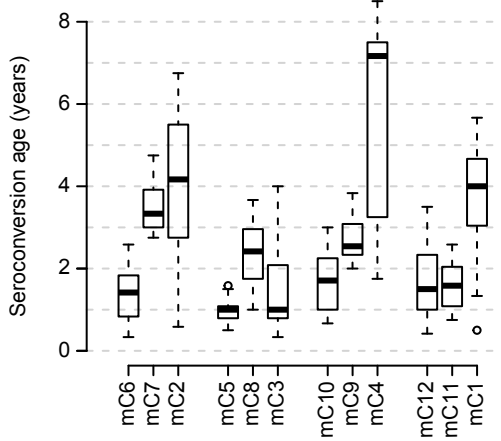
Supplementary Table 1. Distribution of features among the single autoantibody clusters (sC1-sC9).
T1D, type 1 diabetes; C-Section, Caesarean section; IQR, interquartile range.

Autoantibody Cluster	all	sC1	sC2	sC3	sC4	sC5	sC6	sC7	sC8	sC9
N	230	41	33	9	5	21	50	26	27	18
Age (years) of seroconversion median (IQR)	3.5 (1.8-5.1)	3.1 (2.3-3.7)	5.2 (5.0-6.0)	3.5 (3.3-3.8)	4.4 (3.3-4.8)	2.1 (1.3-3.3)	5.9 (2.0-7.7)	1.8 (1.0-4.6)	4.5 (1.9-5.7)	3.1 (2.5-4.0)
T1D prevalence (%)	7	12	3	0	40	33	0	0	0	0
5-year T1D risk % (95% CI)	10 (4-15)	12 (0-24)	3 (0-90)	- -	- -	46 (10-68)	0 (0-0)	0 (0-0)	0 (0-0)	0 (0-0)
Maternal T1D (%)	4	5	3	0	20	5	4	4	0	6
HLA DR3/DR3 (%)	21	38	24	44	0	0	24	12	7	18
HLA DR4/DR3 (%)	42	43	45	33	40	52	34	54	44	29
HLA DR4/DR4 (%)	18	13	15	11	40	19	26	12	26	0
HLA DR4/DRx	20	8	15	11	20	29	16	23	22	53
ZnT8A (%)	14	37	12	0	80	10	6	15	0	6
C-Section (%)	26	27	30	44	40	24	26	15	22	22
Male (%)	57	49	70	44	100	62	62	65	52	22

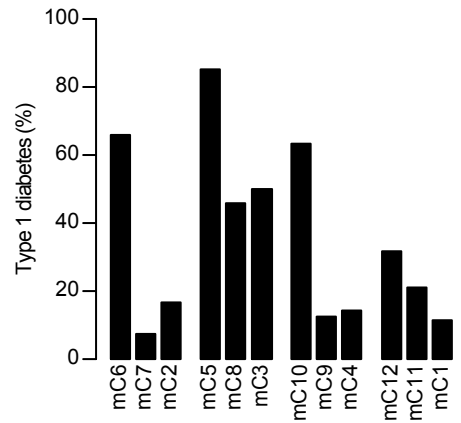
42 months Diabetes



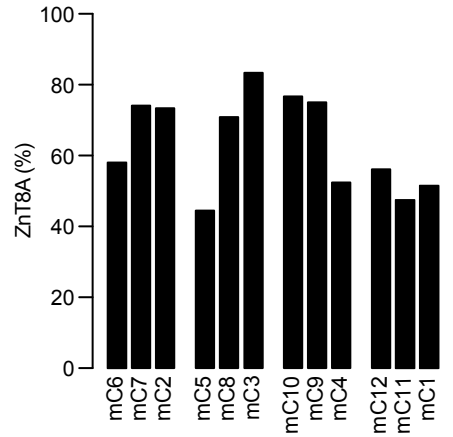
Supplementary Figure 1. Distribution of follow-up time of 600 children who developed persistent beta cell autoimmunity. Density is plotted for age of last available follow-up serum sample among all follow-up samples of all children. A vertical red line is drawn at age 42 months, separating two groups of children with short and long follow-up time, respectively.



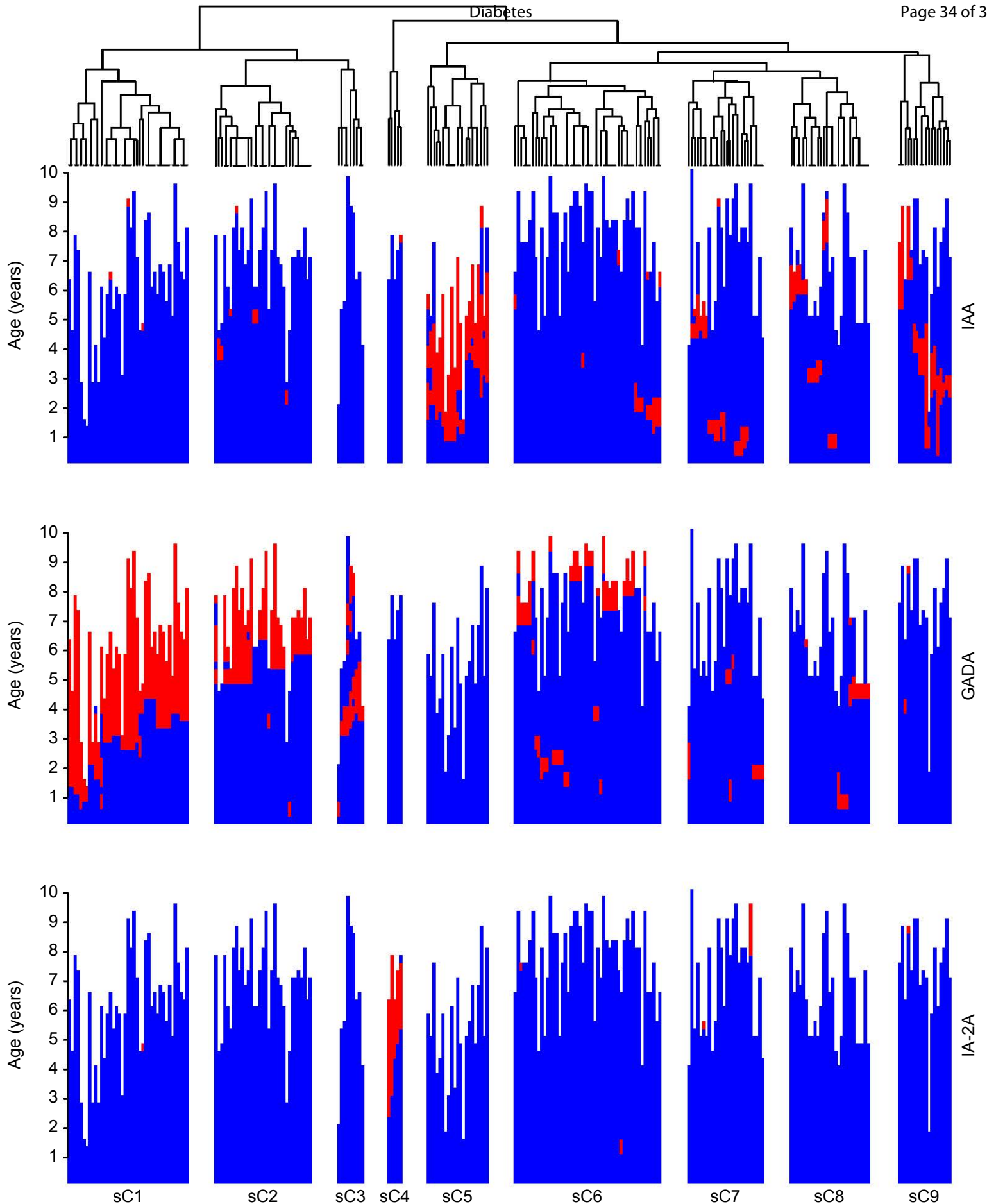
B Diabetes



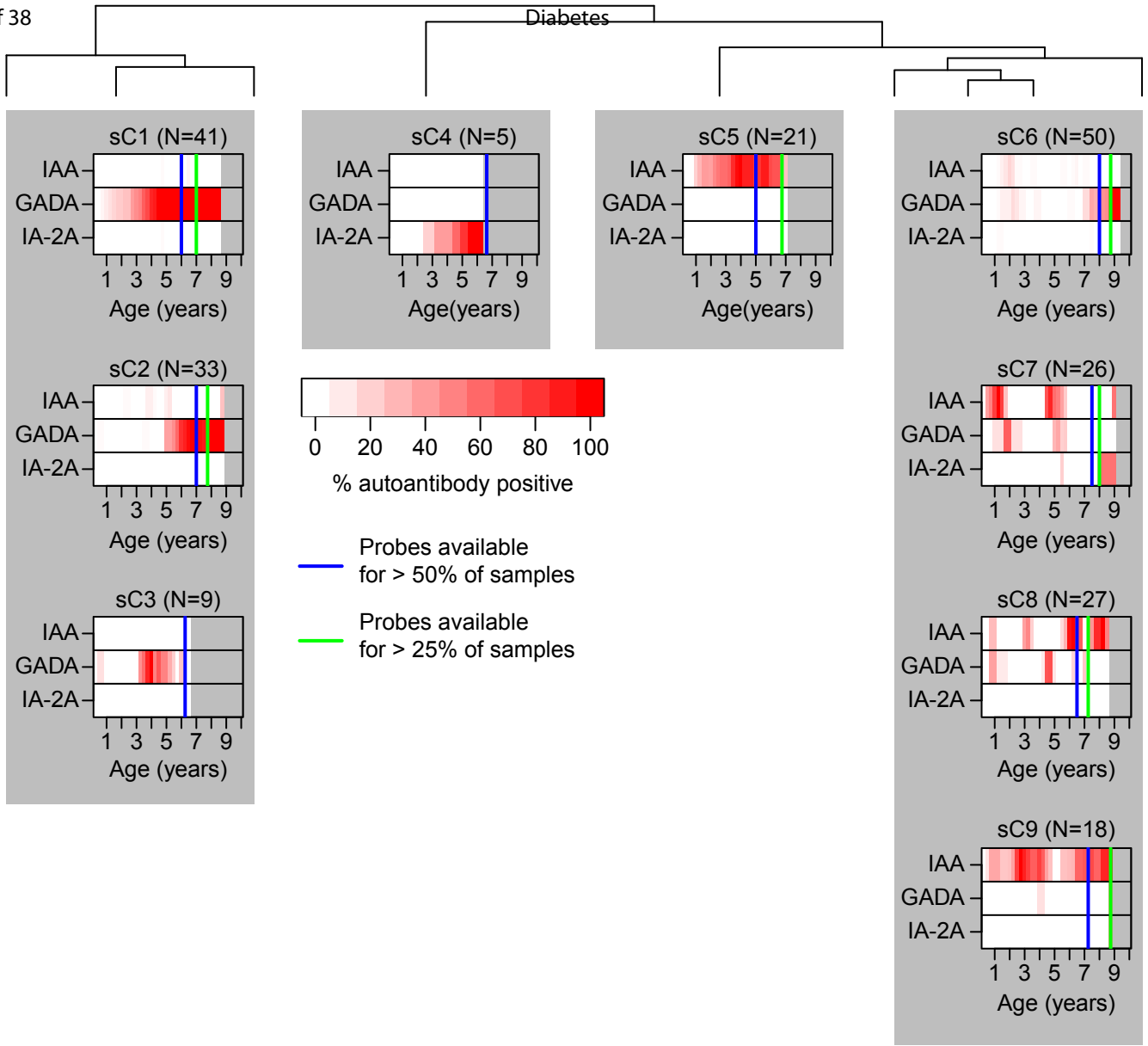
C



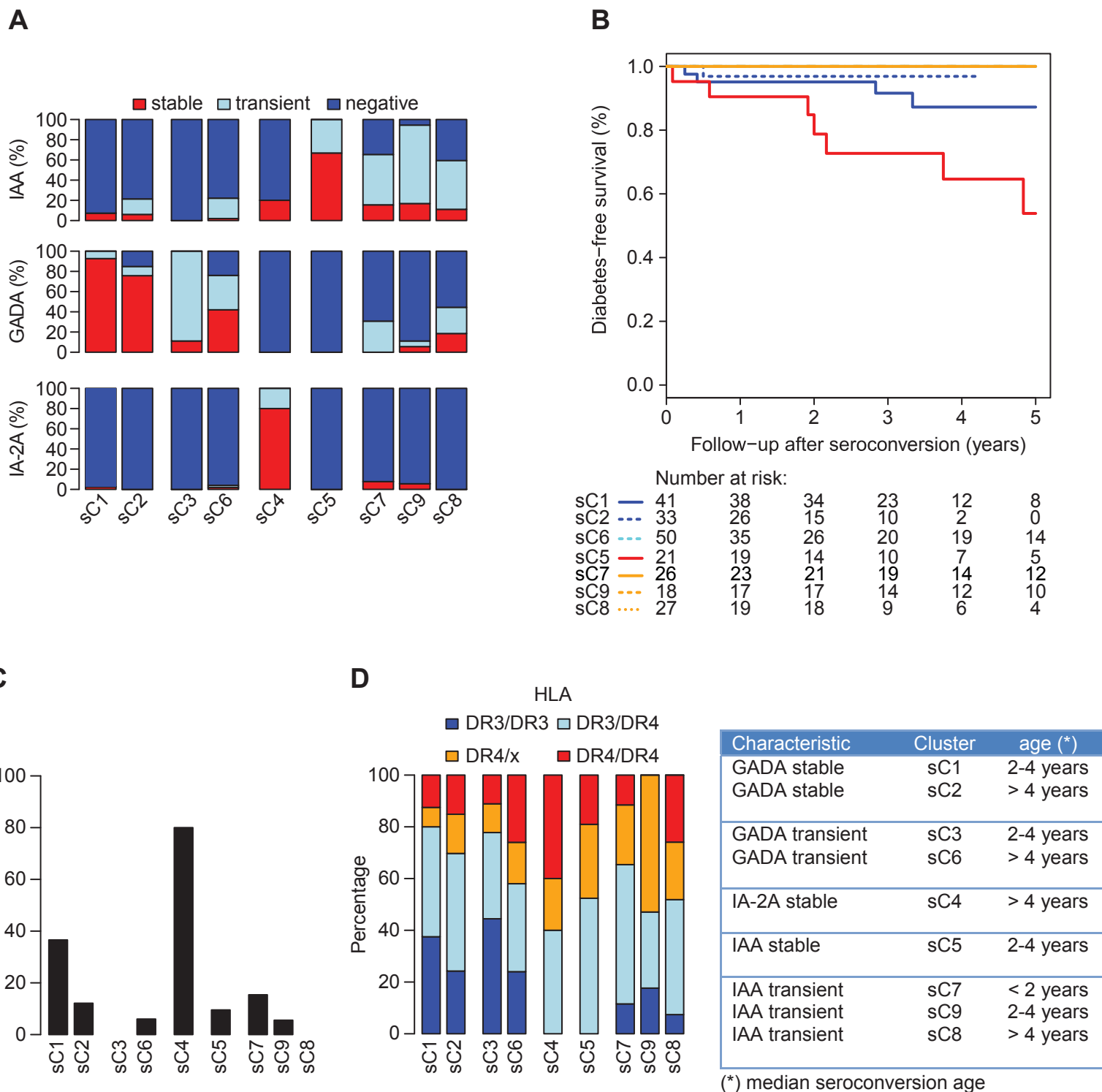
Supplementary Figure 2. Multiple autoantibody clusters (mC1-mC12) are grouped into four groups of three clusters each, based on similarity of autoantibody patterns over time. For clusters of each group is shown: **(A)** the age of seroconversion (median [quartiles]); **(B)** the overall frequency of diabetes throughout follow-up; **(C)** the percentage of children who were ZnT8A-positive on follow-up.



Supplementary Figure 3. Hierarchical clustering results for longitudinal autoantibody profiles of 230 children who developed single beta cell autoantibodies. The dendrogram is divided into 9 single autoantibody clusters (sC1-sC9). Each column represents the follow-up time from birth for one child. The qualitative status of IAA, GADA and IA-2A, respectively, is indicated by color (red = antibody-positive; blue = antibody-negative) with respect to the age at antibody measurement.



Supplementary Figure 4. Aggregated longitudinal profiles of IAA, GADA, and IA-2A are shown for children of single autoantibody clusters (sC1-sC9). For each cluster, the percentage of children positive for the respective autoantibody is indicated by color (white: 0% positive; red: 100% positive) with respect to age. The blue and green lines indicate the age until which >50% and >25% of children in the cluster were followed, respectively. Autoantibody profiles are plotted until only 2 children in the cluster remained in follow-up.



Supplementary-Figure-5. Single-autoantibody clusters (sC1-sC9). For each cluster is shown: (A) the percentage of children who were stable-positive, transiently positive, or negative on follow-up for IAA, GADA and IA-2A, respectively; (B) the cumulative diabetes-free survival from autoantibody seroconversion (not shown for sC3 and sC4; each n<10); (C) the percentage of children who were ZnT8A-positive on follow-up; (D) the proportions of HLA-DR genotypes. ¶

The TEDDY Study Group

Colorado Clinical Center: Marian Rewers, M.D., Ph.D., PI^{1,4,5,6,10,11}, Kimberly Bautista¹², Judith Baxter^{9,10,12,15}, Daniel Felipe-Morales, Kimberly Driscoll, Ph.D.⁹, Brigitte I. Frohnert, M.D.^{2,14}, Marisa Gallant, M.D.¹³, Patricia Gesualdo^{2,6,12,14,15}, Michelle Hoffman^{12,13,14}, Rachel Karban¹², Edwin Liu, M.D.¹³, Jill Norris, Ph.D.^{2,3,12}, Adela Samper-Imaz, Andrea Steck, M.D.^{3,14}, Kathleen Waugh^{6,7,12,15}, Hali Wright¹². University of Colorado, Anschutz Medical Campus, Barbara Davis Center for Childhood Diabetes.

Finland Clinical Center: Jorma Toppari, M.D., Ph.D., PI^{Y^1,4,11,14}, Olli G. Simell, M.D., Ph.D., Annika Adamsson, Ph.D.^{^12}, Suvi Ahonen^{*±§}, Heikki Hyöty, M.D., Ph.D.^{*±6}, Jorma Ilonen, M.D., Ph.D.^{Y^13}, Sanna Jokipuu[^], Leena Karlsson[^], Miia Kähönen^{μ□}, Mikael Knip, M.D., Ph.D.^{*±5}, Mirva Koreasalo^{*±§2}, Kalle Kurppa, M.D., Ph.D.^{*±13}, Tiina Latva-aho^{μ□}, Maria Lönnrot, M.D., Ph.D.^{*±6}, Markus Mattila^{*}, Elina Mäntymäki[^], Katja Multasuo^{μ□}, Tiina Niininen^{±*12}, Sari Niinistö^{±§2}, Mia Nyblom^{*±}, Paula Ollikainen^{μ□}, Petra Rajala[^], Jenna Rautanen^{±§}, Anne Riikonen^{*±§}, Minna Romo[^], Suvi Ruohonen[^], Juulia Rönkä^{μ□}, Satu Simell, M.D., Ph.D.^{Y^13}, Tuula Simell, Ph.D.^{Y^12}, Maija Sjöberg^{Y^12,14}, Aino Stenius^{μ□12}, Sini Vainionpää[^], Eeva Varjonen^{Y^12}, Riitta Veijola, M.D., Ph.D.^{μ□14}, Suvi M. Virtanen, M.D., Ph.D.^{*±§2}, Mari Vähä-Mäkilä[^], Mari Åkerlund^{*±§}, Katri Lindfors, Ph.D.^{*13} Y[^]University of Turku, *University of Tampere, μUniversity of Oulu, ^Turku University Hospital, Hospital District of Southwest Finland, ±Tampere University Hospital, □Oulu University Hospital, §National Institute for Health and Welfare, Finland, ¶University of Kuopio.

Georgia/Florida Clinical Center: Jin-Xiong She, Ph.D., PI^{1,3,4,11}, Desmond Schatz, M.D.^{*4,5,7,8}, Diane Hopkins¹², Leigh Steed^{12,13,14,15}, Jennifer Bryant, Janey Adams^{*12}, Katherine Silvis², Michael Haller, M.D.^{*14}, Melissa Gardiner, Richard McIndoe, Ph.D., Ashok Sharma, Stephen W. Anderson, M.D.[^], Laura Jacobsen, M.D.^{*14}, John Marks, DHSc.^{*}, P.D. Towe^{*}. Center for Biotechnology and Genomic Medicine, Augusta University. *University of Florida, ^Pediatric Endocrine Associates, Atlanta.

Germany Clinical Center: Anette G. Ziegler, M.D., PI^{1,3,4,11}, Andreas Beyerlein, Ph.D.², Ezio Bonifacio Ph.D.^{*5}, Anita Gavrisan, Cigdem Gezginci, Anja Heublein, Michael Hummel, M.D.¹³, Sandra Hummel, Ph.D.², Annette Knopff⁷, Charlotte Koch, Sibylle Koletzko, M.D.^{¶13}, Claudia Ramminger, Roswith Roth, Ph.D.⁹, Marlon Scholz, Joanna Stock^{9,12,14}, Katharina Warncke, M.D.¹⁴, Lorena Wendel, Christiane Winkler, Ph.D.^{2,12,15}. Forschergruppe Diabetes e.V. and Institute of Diabetes Research, Helmholtz Zentrum München, Forschergruppe Diabetes, and Klinikum rechts der Isar, Technische Universität München. *Center for Regenerative Therapies, TU Dresden, ¶Dr. von Hauner Children's Hospital, Department of Gastroenterology, Ludwig Maximilians University Munich.

Sweden Clinical Center: Åke Lernmark, Ph.D., PI^{1,3,4,5,6,8,10,11,15}, Daniel Agardh, M.D., Ph.D.¹³, Carin Andrén Aronsson, Ph.D.^{2,12,13}, Maria Ask, Jenny Bremer, Ulla-Marie Carlsson, Corrado Cilio, Ph.D., M.D.⁵, Emelie Ericson-Hallström, Annika Fors, Lina Fransson, Thomas Gard, Rasmus Bennet, Carina Hansson, Susanne Hyberg, Hanna Jisser, Fredrik Johansen, Berglind Jonsdottir, M.D., Ph.D., Silvija Jovic, Helena Elding Larsson, M.D., Ph.D.^{6,14}, Marielle Lindström, Markus Lundgren, M.D., Ph.D.¹⁴, Maria Månsson-Martinez, Maria Markan, Jessica Melin¹², Zeliha Mestan, Caroline Nilsson, Karin Ottosson, Kobra Rahmati, Anita Ramelius, Falastin Salami, Sara Sibthorpe, Anette Sjöberg, Birgitta Sjöberg, Carina Törn, Ph.D.^{3,15}, Anne Wallin, Åsa Wimar¹⁴, Sofie Åberg. Lund University.

Washington Clinical Center: William A. Hagopian, M.D., Ph.D., PI^{1,3,4,5,6,7,11,13,14}, Michael Killian^{6,7,12,13}, Claire Cowen Crouch^{12,14,15}, Jennifer Skidmore², Ashley Akramoff, Jana Banjanin, Masumeh Chavoshi, Kayleen Dunson, Rachel Hervey, Rachel Lyons, Arlene Meyer, Denise Mulenga, Jared Radtke, Davey Schmitt, Julie Schwabe, Sarah Zink. Pacific Northwest Research Institute.

Pennsylvania Satellite Center: Dorothy Becker, M.D., Margaret Franciscus, MaryEllen Dalmagro-Elias Smith², Ashi Daftary, M.D., Mary Beth Klein, Chrystal Yates. Children's Hospital of Pittsburgh of UPMC.

Data Coordinating Center: Jeffrey P. Krischer, Ph.D., PI^{1,4,5,10,11}, Sarah Austin-Gonzalez, Maryouri Avendano, Sandra Baethke, Rasheedah Brown^{12,15}, Brant Burkhardt, Ph.D.^{5,6}, Martha Butterworth², Joanna Clasen, David Cuthbertson, Christopher Eberhard, Steven Fiske⁹, Dena Garcia, Jennifer Garmeson, Veena Gowda, Kathleen Heyman, Belinda Hsiao, Francisco Perez Laras, Hye-Seung Lee, Ph.D.^{1,2,13,15}, Shu Liu, Xiang Liu, Ph.D.^{2,3,9,14}, Kristian Lynch, Ph.D.^{5,6,9,15}, Colleen Maguire, Jamie Malloy, Cristina McCarthy^{12,15}, Aubrie Merrell, Steven Meulemans, Hemang Parikh, Ph.D.³, Ryan Quigley, Cassandra Remedios, Chris Shaffer, Laura Smith, Ph.D.^{9,12}, Susan Smith^{12,15}, Noah Sulman, Ph.D., Roy Tamura, Ph.D.^{1,2,13}, Ulla Uusitalo, Ph.D.^{2,15}, Kendra Vehik, Ph.D.^{4,5,6,14,15}, Ponni Vijayakandipan, Keith Wood, Jimin Yang, Ph.D., R.D.^{2,15}. *Past staff:* Michael Abbondandolo, Lori Ballard, David Hadley, Ph.D., Wendy McLeod. University of South Florida.

Autoantibody Reference Laboratories: Liping Yu, M.D.^{^5}, Dongmei Miao, M.D.[^], Polly Bingley, M.D., FRCP*⁵, Alistair Williams*, Kyla Chandler*, Olivia Ball*, Ilana Kelland*, Sian Grace*, Ben Gillard*. [^]Barbara Davis Center for Childhood Diabetes, University of Colorado Denver, *Bristol Medical School, University of Bristol UK.

HLA Reference Laboratory: William Hagopian³, MD, PhD, Masumeh Chavoshi, Jared Radtke, Julie Schwabe. Pacific Northwest Research Institute, Seattle WA. (Previously Henry Erlich, Ph.D.³, Steven J. Mack, Ph.D., Anna Lisa Fear. Center for Genetics, Children's Hospital Oakland Research Institute.)

Repository: Sandra Ke, Niveen Mulholland, Ph.D. NIDDK Biosample Repository at Fisher BioServices.

Project scientist: Beena Akolkar, Ph.D.^{1,3,4,5,6,7,10,11}. National Institutes of Diabetes and Digestive and Kidney Diseases.

Other contributors: Kasia Bourcier, Ph.D.⁵, National Institutes of Allergy and Infectious Diseases. Thomas Briese, Ph.D.^{6,15}, Columbia University. Suzanne Bennett Johnson, Ph.D.^{9,12}, Florida State University. Eric Triplett, Ph.D.⁶, University of Florida.

Committees:

¹Ancillary Studies, ²Diet, ³Genetics, ⁴Human Subjects/Publicity/Publications, ⁵Immune Markers, ⁶Infectious Agents, ⁷Laboratory Implementation, ⁸Maternal Studies, ⁹Psychosocial, ¹⁰Quality Assurance, ¹¹Steering, ¹²Study Coordinators, ¹³Celiac Disease, ¹⁴Clinical Implementation, ¹⁵Quality Assurance Subcommittee on Data Quality.