

Journal : ECCOJC
Article Doi : 10.1093/ecco-jcc/jjy191
Article Title : The Pathogenesis of Extraintestinal Manifestations: Implications for IBD Research, Diagnosis and Therapy
First Author : C. R. H. Hedin
Corr. Author : C. R. H. Hedin

INSTRUCTIONS

We encourage you to use Adobe's editing tools (please see the next page for instructions). If this is not possible, please (i) reply to this message and send a list of corrections (in an email or attachment (Word doc or a scan)) listing each change in the following manner: line number, current text, change to be made, or (ii) print out the proof, mark your corrections clearly in black ink, and fax it to 144(0)1865355717. Please do not send corrections as track changed Word documents.

Changes should be corrections of typographical errors only. Changes that contradict journal style will not be made.

These proofs are for checking purposes only. They should not be considered as final publication format. The proof must not be used for any other purpose. In particular we request that you: do not post them on your personal/institutional web site, and do not print and distribute multiple copies (please use the attached offprint order form). Neither excerpts nor the article in its entirety should be included in other publications written or edited by yourself until the final version has been published and the full citation details are available. You will be sent these when the article is published.

1. **Licence to Publish:** If you have not already done so, please complete the Licence to Publish form by fax or email attachment. Please also send a hard copy by mail
2. **Permissions:** Permission to reproduce any third party material in your paper should have been obtained prior to acceptance. If your paper contains figures or text that require permission to reproduce, please inform me immediately by email.
3. **Author groups:** Please check that all names have been spelled correctly and appear in the correct order. Please also check that all initials are present. Please check that the author surnames (family name) have been correctly identified by a pink background. If this is incorrect, please identify the full surname of the relevant authors. Occasionally, the distinction between surnames and forenames can be ambiguous, and this is to ensure that the authors' full surnames and forenames are tagged correctly, for accurate indexing online.
4. **Figures:** Figures have been placed as close as possible to their first citation. Please check that they are complete and that the correct figure legend is present. Figures in the proof are low resolution versions that will be replaced with high resolution versions when the journal is printed.
5. **URLs:** Please check that all web addresses cited in the text, footnotes and reference list are up-to-date, and please provide a 'last accessed' date for each URL.
6. **Funding:** Please provide a Funding statement, detailing any funding received. Remember that any funding used while completing this work should be highlighted in a separate Funding section. Please ensure that you use the full official name of the funding body, and if your paper has received funding from any institution, such as NIH, please inform us of the grant number to go into the funding section. We use the institution names to tag NIH-funded articles so they are deposited at PMC. If we already have this information, we will have tagged it and it will appear as coloured text in the funding paragraph. Please check the information is correct.
7. **Conflict of interest:** All authors must make a formal statement indicating any potential conflict of interest that might constitute an embarrassment to any of the authors if it were not to be declared and were to emerge after publication. Such conflicts might include, but are not limited to, share holding in or receipt of a grant or consultancy fee from accompany whose product features in the submitted manuscript or which manufactures a competing product. The following statement has been added to your proof: 'Conflict of Interest: none declared'. If this is incorrect please supply the necessary text to identify the conflict of interest.

MAKING CORRECTIONS TO YOUR PROOF

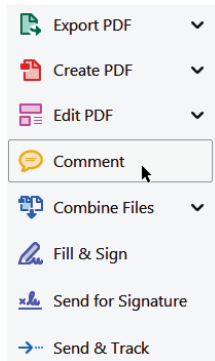
These instructions show you how to mark changes or add notes to your proofs using Adobe Acrobat Professional versions 7 and onwards, or Adobe Reader DC. To check what version you are using go to **Help** then **About**. The latest version of Adobe Reader is available for free from get.adobe.com/reader.

DO NOT OVERWRITE TEXT, USE COMMENTING TOOLS ONLY.

DISPLAYING THE TOOLBARS

Adobe Reader DC

In Adobe Reader DC, the Comment toolbar can be found by clicking 'Comment' in the menu on the right-hand side of the page (shown below).

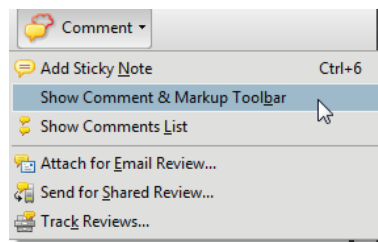


The toolbar shown below will then display along the top.



Acrobat Professional 7, 8, and 9

In Adobe Professional, the Comment toolbar can be found by clicking 'Comment(s)' in the top toolbar, and then clicking 'Show Comment & Markup Toolbar' (shown below).

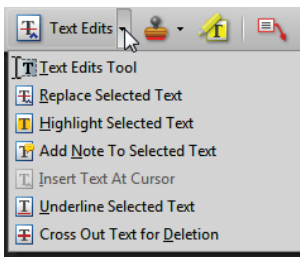


The toolbar shown below will then be displayed along the top.



USING TEXT EDITS AND COMMENTS IN ADOBE ACROBAT

This is the quickest, simplest and easiest method both to make corrections, and for your corrections to be transferred and checked.



1. Click **Text Edits**
2. Select the text to be annotated or place your cursor at the insertion point and start typing.
3. Click the **Text Edits** drop down arrow and select the required action.

You can also right click on selected text for a range of commenting options, or add sticky notes.

SAVING COMMENTS

In order to save your comments and notes, you need to save the file (**File, Save**) when you close the document.

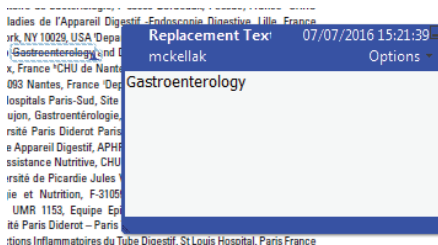
USING COMMENTING TOOLS IN ADOBE READER

All commenting tools are displayed in the toolbar. To edit your document, use the highlighter, sticky notes, and the variety of insert/replace text options.

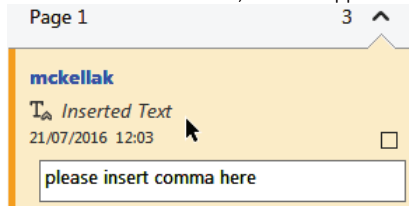


POP-UP NOTES

In both Reader and Acrobat, when you insert or edit text a pop-up box will appear. In **Acrobat** it looks like this:



In **Reader** it looks like this, and will appear in the right-hand pane:



AUTHOR QUERY FORM

Journal : ECCOJC

Article Doi : 10.1093/ecco-jcc/jjy191

Article Title : The Pathogenesis of Extraintestinal Manifestations: Implications for IBD Research, Diagnosis and Therapy

First Author : C. R. H. Hedin

Corr. Author : C. R. H. Hedin

AUTHOR QUERIES - TO BE ANSWERED BY THE CORRESPONDING AUTHOR

Please ensure that all queries are answered, as otherwise publication will be delayed and we will be unable to complete the next stage of the production process.

Please note that proofs will not be sent back for further editing.

The following queries have arisen during the typesetting of your manuscript. Please click on each query number and respond by indicating the change required within the text of the article. If no change is needed please add a note saying “No change.”

AQ1	Is there a department for this affiliation?
AQ2	Please insert the department
AQ3	Please check this insertion is correct.
AQ4	Is this the institution name? Please check both department and institution have been included.
AQ5	Please check this insertion is correct.
AQ6	Is the hospital in Valletta? Please insert the city name.
AQ7	Please insert telephone and fax numbers.
AQ8	Please provide keywords.
AQ9	Please check this edit is acceptable.
AQ10	Please check this edit (from a 'square symbol') is correct.
AQ11	Please check this edit is correct.
AQ12	Has this edit interpreted you correctly? (An alternative interpretation is: 'Microbiota-derived metabolites, e.g. from the metabolism of bile acids, and the generation of short-chain fatty acids could alter immune signalling.')
AQ13	Please check whether this has been correctly italicized.
AQ14	Please check whether this has been correctly italicized.
AQ15	Please check whether this abbreviation is acceptable.
AQ16	Please check whether this abbreviation is acceptable.
AQ17	Has this edit interpreted you correctly?
AQ18	Please check whether this edit is acceptable.
AQ19	Please check whether this edit is acceptable.
AQ20	Please check whether this edit is acceptable.
AQ21	Please check whether this edit is acceptable.
AQ22	Is this edit acceptable.
AQ23	Please provide full name for 6th author and page number for the reference 105.
AQ24	Please provide publisher name and location for the reference 164. Alternatively, is it the citation from 'Health Qual Life Outcomes 2006;4:79.
AQ25	Please note there is a charge of £350/€525/\$600 per figure for colour reproduction in print. Please confirm you accept this charge. Alternatively, figures can be published online in colour and printed in black and white free of charge.
AQ26	Kindly check the head levels.
AQ27	The resolution of figure 1 is lower in quality than usually printed. Please provide a high resolution image for better processing.

ECCO Scientific Workshop Paper

The Pathogenesis of Extraintestinal Manifestations: Implications for IBD Research, Diagnosis, and Therapy

C. R. H. Hedin^{a,o}, S. R. Vavricka^b, A. Stagg^c, A. Schoepfer^d, T. Raine^e,
 L. Puig^f, U. Pleyer^g, A. Navarini^h, A. van der Meulenⁱ, J. Maul^j,
 K. Katsanos^k, A. Kagramanova^l, T. Greuter^{m,n}, Y. Gonzalez Lama^o,
 F. van Gaalen^p, P. Ellul^q, J. Burisch^{r,s}, D. Bettenworth^t, M. D. Becker^u,
 G. Bamias^v, F. Rieder^w

^aGastroenterology unit, Patient Area Gastroenterology, Dermatovenerology and Rheumatology, Karolinska University Hospital, Stockholm, Sweden ^bCentre for Gastroenterology and Hepatology, Zurich, Switzerland ^cBarts and The London, Queen Mary's School of Medicine and Dentistry, Centre for Immunobiology, London, UK ^dFMH Internal Medicine, Gastroenterology and Hepatology, Department of Gastroenterology and Hepatology, Vaud University Hospital Center / CHUV, Lausanne, France ^eDepartment of Gastroenterology, Addenbrooke's Hospital, Cambridge University Teaching Hospitals NHS Foundation Trust, Cambridge, UK ^fDepartment of Dermatology, Hospital de la Santa Creu i Sant Pau. Universitat Autònoma de Barcelona, Barcelona, Catalonia, Spain ^gUniversity Eye Clinic, Uveitis Center, Charité – Universitätsmedizin Berlin, Berlin, Germany ^hDepartment of Dermatology, University Hospital Zurich, Zurich, Switzerland ⁱLeiden University Medical Center [LUMC], Leiden, Netherlands ^jGastroenterology at Bayerischer Platz, Berlin, Germany ^kDivision of Gastroenterology, Department of Internal Medicine, Medical School, University of Ioannina School of Medical Sciences, Ioannina, Greece ^lIBD Department, The Loginov Moscow Clinical Scientific Centre, Moscow, Russia ^mDivision of Gastroenterology and Hepatology, University Hospital Zurich, Zurich, Switzerland ⁿGastroenterology Research Unit, Mayo Clinic, Rochester, MN, USA ^oIntestinal Inflammatory Disease Unit / IBD Unit, Gastroenterology and Hepatology Service / Gastroenterology and Hepatology Department, Puerta de Hierro University Hospital, Majadahonda, Madrid, Spain ^pDepartment of Rheumatology, Leiden University Medical Center [LUMC], Leiden, Netherlands ^qDepartment of Medicine, Division of Gastroenterology, Mater Dei Hospital, Malta ^rCenter for Clinical Research and Prevention, Bispebjerg and Frederiksberg Hospital, University of Copenhagen, Copenhagen, Denmark ^sAbdominal Center K, Medical Section, Bispebjerg and Frederiksberg Hospital, University of Copenhagen, Copenhagen, Denmark ^tDepartment of Medicine B, Gastroenterology and Hepatology, University Hospital Münster, Münster, Germany ^uDepartment of Ophthalmology, Triemli Hospital, Zurich, Switzerland ^vNational and Kapodistrian University of Athens, GI Unit, 3rd Academic Department of Internal Medicine, Sotiria Hospital, Athens, Greece ^wDepartment of Gastroenterology, Hepatology and Nutrition; Digestive Diseases and Surgery Institute, Cleveland Clinic Foundation, Cleveland, OH, USA

Corresponding author: Dr Charlotte Hedin, PO Gastroenterology, Dermatovenerology and Rheumatology, Inflammation and Infection Theme, Karolinska University Hospital, 171 76 Solna, Sweden. Email: charlotte.hedin@ki.se

Conference Presentations: ECCO 2018.

Abstract

This article reports on the sixth scientific workshop of the European Crohn's and Colitis Organisation [ECCO] on the pathogenesis of extraintestinal manifestations [EIMs] in inflammatory bowel disease [IBD]. This paper has been drafted by 15 ECCO members and 6 external experts [in rheumatology, dermatology, ophthalmology, and immunology] from 10 European countries and

Abbreviations: CD, Crohn's disease; IBD, inflammatory bowel disease; TNF, tumour necrosis factor; PSC, primary sclerosing cholangitis.



1.55

1.60

1.65

1.70

AQ1

1.75

1.80

AQ3

1.85

1.90

1.95

AQ7

1.100

1.105

1.108

the USA. Within the workshop, contributors formed subgroups to address specific areas. Following a comprehensive literature search, the supporting text was finalized under the leadership of the heads of the working groups before being integrated by the group consensus leaders.

AQ8
2.65

2.5

1. Introduction

Up to 50% of IBD patients experience at least one extraintestinal manifestation [EIM].¹ The pathogenic mechanisms of EIM are not clearly defined. Unravelling these pathways has the potential to enhance our understanding of the pathogenesis not only of EIMs, but also of IBD overall. Defining pathogenic pathways in EIMs is challenging due to the lack of consistent criteria for diagnosis and the difficulty in distinguishing drug-induced extraintestinal pathologies from EIMs. Optimizing treatment may also be problematic. For many EIMs, commonly accepted definitions and high-quality evidence supporting different treatment strategies are lacking.² Therefore, there is a great need for both basic science studies and clinical trials to understand the pathogenesis and determine the optimal treatment for EIMs. The first ECCO European Evidence-based consensus on EIMs in IBD provided an authoritative guideline for the clinical management of EIMs.² The current article seeks to complement and extend the clinical guideline by identifying frontiers and opening questions for clinical research.

2.10

2.15

2.20

2.25

2. Definition

In order to standardize systematic inclusion of patients in scientific and clinical studies and align outcome measures to ensure clarity across the scientific literature, widely agreed-upon definitions of the pathology being studied are critical. In order to provide a frame of reference for scientific discourse, the expert panel suggests the following *mechanistic* definition of what constitutes an EIM:

2.30

2.35

AQ9

“An inflammatory pathology in a patient with IBD that is located outside the gut and for which the pathogenesis is either dependent on extension/translocation of immune responses from the intestine, or is an independent inflammatory event perpetuated by IBD or that shares a common environmental or genetic predisposition with IBD.”

2.40

A wide range of extraintestinal pathologies are associated with IBD; however, not all of these would be considered to be true EIMs according to the definition above. The panel proposes that current data supports the pathologies listed in the first column of [Table 1](#) as being true EIMs, with other pathologies classified as associated autoimmune conditions or complications of IBD and its treatment. The distinction between these categories can be imprecise, and overlap likely exists; it is probable that, with future new data, some pathologies will be reclassified. For the purpose of this review, the panel focused on true EIMs as described by the definition above.

2.45

2.50

3. Basic mechanisms of EIM

3.1. Immunological mechanisms

The potentially diverse immune mechanisms that underlie EIMs are poorly defined. We discuss two distinct theories that mechanistically link inflammation in the intestine and at other sites. First, EIMs arise from an extension of antigen-specific immune responses from the intestine to non-intestinal sites. Second, EIMs are independent inflammatory events initiated or perpetuated by the presence of IBD or by shared genetic or environmental risk factors in the host. These

2.55

2.60

mechanisms are not mutually exclusive and may contribute to varying degrees in different EIMs [[Figure 1](#)].

2.70

3.2. Extension of immune responses from the intestine

3.2.1. Ectopic expression of gut-specific chemokines and adhesion molecules

Abnormal patterns of lymphocyte homing in IBD may contribute to EIMs.³ Expression of the vascular addressin MAdCAM-1 is normally restricted to intestinal tissue and, in the context of specific chemokine signals, enables gut tropic T cells that express $\alpha 4\beta 7$ integrin to traffic selectively to the intestinal mucosa. Additional tropism for the small intestine comes from the chemokine CCL25, attracting lymphocytes expressing its receptor CCR9. Ectopic expression of both chemokines and adhesion molecules can occur in IBD,⁴ and may facilitate trafficking of inflammatory T cells to extraintestinal sites. The best supporting evidence comes from IBD-associated primary sclerosing cholangitis [PSC]. Ectopic expression of both MAdCAM-1 and CCL25 has been demonstrated in the vascular endothelium of the portal tract.^{5,6} One-fifth of the infiltrating T cells co-express CCR9 and $\alpha 4\beta 7$, whereas the frequency of these cells is low in other forms of liver inflammation, indicating an important role for these molecules in recruitment of inflammatory lymphocytes in PSC.⁶ While it is attractive to propose ectopic expression of gut-associated addressins at extraintestinal sites as a logical mechanism for EIMs, evidence that this occurs in organs other than the liver is lacking. However, co-expression of $\alpha 4\beta 7$ with cutaneous leukocyte antigen [CLA], [implicated in homing to the skin], by some blood T cells from IBD patients,⁷ may indicate that gut-generated effector cells can acquire both gut and skin tropism.

2.75

2.80

2.85

2.90

2.95

3.2.2. T cell trafficking driven by non-specific adhesion molecules

Upregulation of inflammation-associated adhesion molecules and chemokines that lack tissue restriction may also enable capture of effector cells, facilitating their recruitment into non-intestinal sites. Gut leukocytes from IBD patients are able to bind to the synovial membrane, using a repertoire of adhesion molecules,⁸ but mainly using endothelial vascular adhesion protein 1 [VAP-1].⁹ VAP-1 also plays a role in transmigration of lymphocytes across the hepatic endothelium, and its expression is upregulated by inflammation.^{10,11} T cells from the intestinal mucosa of IBD patients express chemokine receptors, such as CXCR3 and CCR5,^{12,13} which may contribute to their ability to enter other tissues. Low-grade inflammation, injury, or mechanical stress at extraintestinal sites (as implicated in the pathogenesis of spondyloarthritis [SpA]¹⁴ and pyoderma gangrenosum, where this phenomenon is termed pathergy) may nucleate the recruitment of gut-generated effector cells and further enhance the inflammatory process.

2.100

2.105

2.110

2.115

3.2.3. Microbial antigen translocation and/or cross-reactivity

Models of EIMs that invoke trafficking of gut effector T cells raise the question as to whether this process is dependent on antigen-specific reactivation at non-intestinal sites and, if so, what the antigen may be. Antigens derived from the gut microbiota are believed to be key targets for intestinal effector T cells in IBD, and transport of

2.120

2.122

Table 1. Suggested categorisation of extraintestinal conditions that occur in IBD patients, [list of extraintestinal conditions associated with IBD adapted from Harbord *et al.*²].

System	A. Extraintestinal manifestations [multifocal inflammation]	B. Complications of IBD and its treatment	C. Associated conditions with uncertain mechanism		
3.5	Joints and bones	Spondyloarthritis	Metabolic bone disease/ osteoporosis—[drug or nutritionally induced]	Non-inflammatory arthralgia	3.65
	Eye	Uveitis Episcleritis Scleritis	Drug-induced cataracts and other drug-induced and nutritional eye disease [see supplementary Figure 4]		3.70
3.10	Oral, aural and nasal	Oral CD Orofacial granulomatosis Metastatic CD		Sensorineural hearing loss	
3.15	Skin	Erythema nodosum Pyoderma gangrenosum Sweet syndrome Metastatic CD	Drug-induced skin disease [e.g. anti-TNF–induced psoriasis, DILE] Drug-induced skin cancer Drug hypersensitivity	Vitiligo Psoriasis Eczema Epidermolysis bullosa acquisita Cutaneous pyodermitis nodosa Hidradenitis suppurativa	3.75
3.20	Urogenital	Metastatic CD	Nephrolithiasis Amyloidosis Drug-induced tubulo-interstitial nephritis		3.80
	Hepato-pancreato-biliary	PSC	Portal vein thrombosis Hepatic amyloidosis DILI Drug-induced pancreatitis	Autoimmune hepatitis Granulomatous hepatitis Autoimmune pancreatitis	3.85
3.25	Neurological		Peripheral neuropathy [drug or nutritionally induced] Venous sinus thrombosis Stroke	Central demyelination	
3.30	Cardiovascular		Ischaemic heart disease Cerebrovascular accident Mesenteric ischaemia		3.90
	Pulmonary		Drug-induced lung fibrosis	Inflammatory bronchial and parenchymal lung disease, including asthma, bronchiectasis, and interstitial pneumonias	3.95
3.35	Coagulopathy Endocrine		Venous thromboembolism Drug-induced Cushing's and Addison syndromes Drug-induced diabetes	Type 1 diabetes Autoimmune thyroid disease	
3.40	Infection		Infections including systemic and local secondary to immunosuppression; septic complications of IBD or surgery		3.100

IBD: inflammatory bowel disease, CD: Crohn's disease, DILE: drug-induced lupus erythematosus, PSC: primary sclerosing cholangitis, DILI: drug-induced liver injury.

3.45 A. For several conditions, there is evidence for a mechanistic link between two pathologies, as described by the definition put forward in this paper of a 'true' extraintestinal manifestation [EIM] of IBD. We would propose that these conditions may also be considered multifocal inflammation.

B. Other conditions that occur in IBD patients are complications of the disease or its surgical or pharmacological management.

3.50 C. Several conditions occur more commonly in IBD patients, but there is lack of evidence for categorizing these as either complications or directly linking them mechanistically to IBD. It is likely that, as pathogenic mechanisms are better understood, it may be possible to re-classify some of these conditions as 'true' EIMs/ multifocal inflammation.

3.55 these antigens to the liver via the portal circulation may activate such cells localized here via $\alpha 4\beta 7$ –MAdCAM-1 interactions and other pathways. The presence of distinct gut microbiota in IBD patients with PSC^{15–17} may suggest specific bacterial antigens. At other sites, cells may be reactivated by cross-reactive components of the resident microbiota or host antigens. Molecular mimicry, in the form of peptide sequences common between enteric bacteria and host MHC molecules has been reported,^{18,19} although the pathologic significance of this is unclear. In mice, retina-specific T cells that cause uveitis require activation in the gut by a microbiota-dependent signal, most likely a cross-reactive bacterial antigen,²⁰ providing evidence for a direct link between gut microbiota, recognition of self-antigens, and

inflammation at a non-intestinal site. Indeed, leukocyte trafficking between the gut and the eye has been demonstrated in experimental models of autoimmune uveitis.²¹ However, the antigen specificity of T cells responsible for EIMs in humans has never been defined.

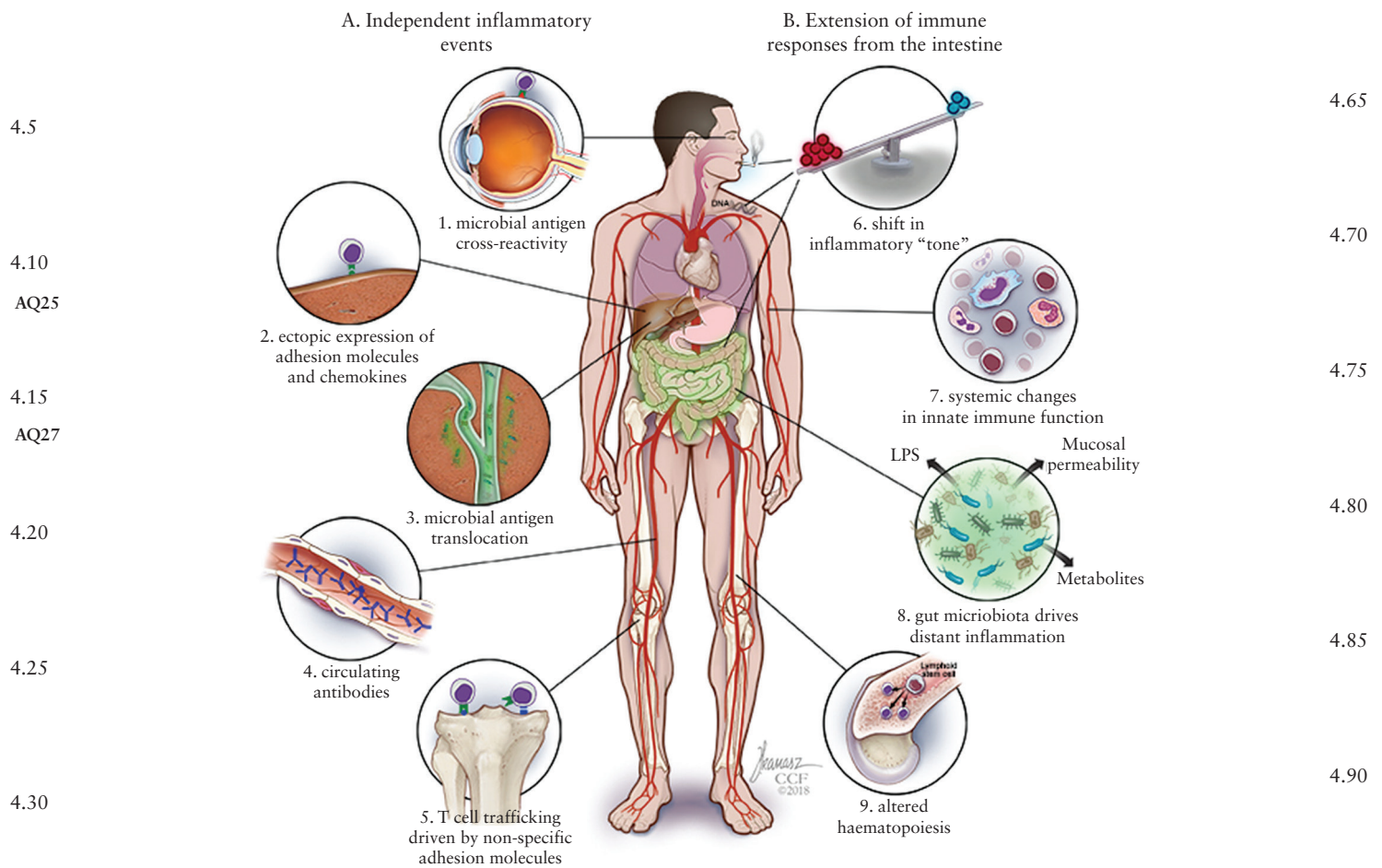
3.2.4. Circulating antibodies

3.115 Circulating antibodies could extend intestinal immune responses to additional sites, and immune complex–mediated inflammation has been proposed to contribute to certain EIMs.²² Autoantibodies reactive to colonic proteins have been identified in patients with IBD,^{23,24} and [using monoclonal antibodies] epitopes shared between human colon and tissues such as eyes, joints, skin, and biliary epithelium

3.115

3.120

3.122



4.5
4.10
AQ25
4.15
AQ27
4.20
4.25
4.30

4.65
4.70
4.75
4.80
4.85
4.90

Figure 1. Potential mechanisms of EIMs. I. Extension of immune responses from the intestine. A. Ectopic expression of adhesion molecules and chemokines e.g. ectopic expression of *MAAdCAM-1* and *CCL25* in the vascular endothelium of the portal tract. B. T cell trafficking driven by non-specific adhesion molecules e.g. $\alpha 4\beta 7$ -independent binding of leukocytes to the synovial membrane using a repertoire of adhesion molecules. Non-specific interactions may be initiated after low-grade inflammation, injury, or mechanical stress. C. Microbial antigen translocation e.g. via portal tracts. D. Microbial antigen cross-reactivity e.g. molecular mimicry between enteric bacteria and host MHC molecules. E. Circulating antibodies that may bind epitopes shared between human colon and extraintestinal tissues. II. EIMs as independent inflammatory events. F. Shift in inflammatory tone driven by genetic, environmental, or microbial factors or by a systemic increase in key inflammatory mediators. G. Systemic changes in innate immune function e.g. neutrophil priming. H. Altered haematopoiesis driven by microbial products, intestinal inflammation, systemic inflammatory cytokines, increased gut permeability, changes in the composition or metabolic products of the microbiota. I. Gut microbiota drives distant inflammation via microbial products such as LPS, through changes in gut permeability and microbiota-derived metabolites.

4.35
4.40
4.45
4.50
4.55
AQ10
4.60

4.95
4.100
4.105
AQ11
4.110
4.115
4.120
4.122

have been identified.²⁵⁻²⁷ However, clear evidence of a causative role for antibodies or immune complexes in the pathogenesis of EIMs in IBD patients is lacking.

3.3. EIMs as independent inflammatory events

3.3.1. A shift in inflammatory tone favours the development of EIMs

An alternative explanation for EIMs would see them as independent inflammatory events sharing common genetic²⁸ or environmental²⁹ risk factors with IBD. The presence of intestinal inflammation and/or microbial dysbiosis in individuals with IBD might further increase the risk of developing extraintestinal inflammation through modulation of inflammatory 'tone', impacting on immune functions at other sites. Key inflammatory mediators, including IL-6, TNF α , IFN γ , and VEGF,³⁰ are raised in the serum of IBD patients, as is bacterial LPS,³¹ which may promote cytokine production via activation of immune cells at non-intestinal sites. Systemic effects, including increases in epithelial permeability³² and upregulation of neutrophil extravasation ligands on vascular endothelium, may lower the threshold for immune

activation at extraintestinal sites. IBD-associated cytokines, such as IL-23, which is produced at high levels in CD and UC, can activate immune cells resident within the synovial membrane and drive SPA.³³

3.3.2. Systemic changes in innate immune function

Exposure of neutrophils to inflammatory cytokines or other signals can enhance their response upon subsequent activation, a phenomenon termed 'neutrophil priming'.³⁴ Circulating neutrophils show morphological evidence of activation in IBD³⁵ and are primed to produce increased levels of TNF α and IL-1 β .³⁶ In contrast, recruitment of neutrophils to the skin and clearance of subcutaneous bacteria is reduced in patients with CD.³⁷ Likewise, changes in circulating monocytes³⁸ and macrophages derived from blood monocytes³⁷ have been reported in IBD, with reduced inflammatory cytokine production in response to bacterial stimulation.

3.3.3. Altered haematopoiesis

Changes in circulating immune cells observed in IBD are likely to reflect altered haematopoiesis in the bone marrow. In mouse models,

5.5	haematopoiesis is influenced by both microbial products ^{39–43} and the presence of intestinal inflammation. ^{44,45} In IBD, systemic inflammatory cytokines, increased permeability of the intestine to microbial products, or changes in the composition and metabolic products of the microbiota, could all influence the generation of innate immune cells. ^{46,47}	
	3.3.4. Dysbiosis and gut microbiota	
5.10	The long-established link between gut infections with enteric pathogens such as <i>Salmonella</i> , <i>Campylobacter</i> , <i>Yersinia</i> , and <i>Shigella</i> and reactive arthritis is a clear indication that potential pathogenic pathways between microbiota in the gut and extraintestinal inflammation exist. Specific EIMs are associated with gut dysbiosis: Patients with SpA have decreased faecal gut microbial diversity and increased abundance of <i>Ruminococcus gnavus</i> and the genus <i>Dialister</i> , which are positively correlated with disease activity. ^{48,49} Patients with psoriatic arthritis also exhibit decreased faecal microbial diversity. ⁵⁰ In addition, faecal <i>Saccharomyces cerevisiae</i> abundance is decreased in patients with psoriasis compared with healthy controls. ⁵¹	
5.15	Primary sclerosing cholangitis has also been associated with decreased faecal microbial diversity. ^{15,52} One study has suggested that IBD patients have similar dysbiosis to IBD-PSC patients. ¹⁷ However, a conflicting report ⁵³ makes it difficult to judge whether the risk for developing PSC is driven by specific microbial factors. ¹⁷	
5.20	There is a paucity of studies determining gut dysbiosis in individuals with inflammatory eye disease, although one study demonstrated differences in gut microbiota between healthy individuals and those with age-related macular degeneration, ⁵⁴ and preliminary data suggested the existence of an intraocular microbiota. ⁵⁵	
5.25	There is a range of potential mechanisms by which gut microbiota drive the pathogenesis of EIMs [Box 1].	
5.30	The first four of these hypothesized mechanisms have been included in the discussion in the preceding section. However, gut microbiota may promote inflammation at extraintestinal sites through metabolic activities. <i>Ruminococcus</i> , which is altered in patients with arthritis, could initiate breach of the intestinal barrier through mucin	
5.35		
5.40	1. Molecular mimicry: similarity between gut microbiota and non-microbial epitopes present at the extraintestinal site.	
5.45	2. Microbial communities in the extraintestinal site: similarities with pro-inflammatory gut microbiota could drive extraintestinal inflammation.	
5.50	3. Microbial translocation: Microbiota or their components are translocated from the gut to the extraintestinal site, [e.g. to the liver via the portal circulation].	
5.55	4. Soluble microbial-derived factors, e.g. LPS, may be released into the circulation and promote inflammation at extraintestinal sites.	
AQ12	5. Disruption of gut barrier: Specific microbiota, such as mucin degraders, may disrupt the gut mucosal barrier, facilitating leakage of cellular or non-cellular factors into the circulation.	
5.60	6. Microbiota-derived metabolites, e.g. from the metabolism of bile acids and the generation of short-chain fatty acids, could alter immune signalling.	
	7. Acquisition of deleterious microbiota in early life could result in altered immune development, which in turn could generate a persistent pro-inflammatory immune 'tone'.	
	degradation. ⁵⁶ In rats, gut microbiota-dependent alterations in bile acid deconjugation are associated with altered bile acid profiles in extraintestinal sites, including kidney, heart, plasma, and liver, demonstrating that gut microbial metabolic functions have the potential to influence immune signalling at distant sites. ⁵⁷ Short-chain fatty acids [SCFAs], produced by many gut bacteria, may have metabolic or immunomodulatory effects. In experimental autoimmune uveitis, oral administration of SCFAs attenuated uveitis severity and was associated with suppression of effector T cell induction. ²¹ Furthermore, SCFAs have a potential role in modulating T cell trafficking to extraintestinal sites. Finally it has been hypothesized that IBD-linked dysbiosis may exert its pathogenic effect during immune development. ⁵⁸ This is supported by animal models, with bacterial colonization of mice at age 3 weeks resulting in a persistent inflammatory tone, whereas colonization when aged 1 week did not. ⁵⁹ Thus, disruption of the acquisition of gut microbiota early in life may generate persistent aberrant immune responses, manifested in the gut or extraintestinally or both. Indeed, factors that may influence the process of gut microbiota acquisition in early life, such as breastfeeding, have been shown to be protective against the occurrence of ankylosing spondylitis [AS]. ⁶⁰	5.65 5.70 5.75 5.80
	Open questions:	5.85
	1. Are the gut microbiota pathogenic in EIMs [via any of the mechanisms mentioned in the text] or are EIMs independent of gut microbiota?	
	2. If microbiota play a role, what is the mechanism?	
	3. If EIMs are driven by microbiota, are these the same as or different from those involved in IBD pathogenesis?	5.90
	4. Are microbial communities in other parts of the body involved in IBD pathogenesis?	
	3.4. Genetic basis of extraintestinal manifestations	5.95
	3.4.1. Familial and epidemiological evidence	AQ26
	There is an extensive overlap in genetic risk loci for both IBD and EIMs, particularly AS. ⁶¹ Association studies revealed a concordance in EIMs present in 70% of parent–child pairs and in 84% of sibling pairs, highlighting the role of genotype ⁶² [or early life environmental factors]. In addition, the appearance of one EIM increases the probability of developing other EIMs. ^{1,63} Further supporting the genetic underpinning of EIMs, the CD risk gene <i>NOD2</i> , encoding a pattern recognition receptor, has also been associated with sacroiliitis ⁶⁴ and uveitis. ⁶⁵ Several <i>HLA</i> genes and <i>HLA</i> -independent loci have been associated with the presence of EIMs, and a detailed description can be found in the Supplementary Data. The genetic contribution to the pathogenesis of EIMs and IBD comprises a combination of overlapping and independent loci, a situation that is consonant with the occurrence of EIMs in individuals both with and without evidence of gut inflammation. However, whether the involved loci all contribute to pathology in an EIM-specific fashion, or whether there are genes that liberate inflammatory responses from restriction to specific body compartments and thus give rise to EIMs in general, is not known.	5.100 AQ13 5.105 AQ14 5.110 5.115
	Open questions:	
	1. Are the genes that predispose to specific EIMs in IBD patients the same as the genes that predispose towards the EIM pathology in non-IBD patients?	5.120
	2. Are there genes common to all EIM patients and distinct from non-EIM IBD [immune mobility / promiscuity factors]?	5.122

3. Do IBD patients with no EIMs have protective factors, i.e. do they have the same genetic risk as EIM patients, but have additional [genetic or environmental] protective factors?

6.5 3.5. Animal models of EIMs

Animal models where inflammation is manifested at more than one anatomical site or bodily system [multifocal inflammation] provide experimental platforms for dissecting pathogenic pathways of EIMs and serve as tools for testing potential therapies. However, only a few models manifest multifocal inflammation, with colitis–arthritis models being the dominant phenotype available.

TNF^{ARE} mice carry a genetic deletion of TNF AU-rich elements [ARE], leading to overexpression of TNF.⁶⁶ The resulting phenotype is CD-like transmural and granulomatous chronic ileitis along with SpA-like sacroiliitis, Achilles tendon enthesitis, and peripheral arthritis. Paradoxically [given the importance of innate immune responses in human IBD], in this model ileitis appeared to be dependent on the presence of mature T and/or B cells, as mice with TNF^{ARE} in combination with a RAG^{-/-} background developed only arthritis.⁶⁶ Furthermore, mice with intestinal epithelial cell-specific TNF ARE deletion develop ileitis but not EIMs,⁶⁷ indicating that intestinal inflammation *per se* is not sufficient for induction of arthritis, which is therefore presumably dependent on local TNF production in the joint. Ileitis is abrogated in germ-free TNF^{ARE68} and TNF^{ARE}/β7^{-/-} mice,⁶⁹ but the effects of such manipulations on joint inflammation have not been reported yet. Taken together, in TNF^{ARE} mice, gut and joint inflammation likely represent independent phenomena mediated by a common pro-inflammatory factor.

HLA-B27 transgenic rats develop SpA and colitis, but also gastritis, psoriasis, and epididymitis.⁷⁰ In the intestinal mucosa, there is increased production of pro-inflammatory cytokines [IFN-γ, IL-2, IL-1α, IL-1β, TNFα, and MIP2], and in addition plasma concentrations of TNFα and IL-6 are raised. IL-23 and IL-17A may play important roles, in association with HLA-B27 misfolding in the ER and activation of the unfolded protein response, leading to downstream inflammation.^{71,72} Interestingly, in this model, both colitis and arthritis [but not dermatitis or epididymitis] are dependent upon the presence of microbiota.⁷³ The HLA-B27 model is consistent with a common genetic origin of multi-organ inflammation, but also emphasizes the fact that some but not all EIMs are dependent on microbiota. However, when interpreting data from germ-free models, it is important to consider that conventionally reared mice are not only colonized with microbiota in the gut, but also in other organs such as skin, joints, and eye, which may also play a role in pathogenesis. More detailed experiments may be required to determine the contribution of extraintestinal microbiota communities in animal models of inflammation.

SKG mice that receive intraperitoneal injections of 1,3-β-glucan develop ileitis in association with enthesitis, arthritis, dactylitis, fasciitis, vertebral inflammation, and uveitis.⁷⁴ Treatment with anti-IL-23 mAbs or genetic deletion of the downstream cytokine IL-17A abrogate both ileitis and arthritis.⁷⁵ Time-course expression studies identified intestinal mucosa as the source of elevated IL-23 production.⁷⁵ Nevertheless, immunological pathways of joint and gut inflammation in this model are not identical, because IL-22 neutralization reduced the severity of enthesitis but exacerbated ileitis in 1,3-β-glucan-treated SKG mice.

Animal models: Open questions

1. Could further animal models with intestinal inflammation and extraintestinal involvement [including sites other than joints] be developed?

2. Which common pathways between mucosal and extraintestinal inflammation are implicated in animal models where both occur?
3. What is the role of microbiota [including faecal transplant] in the development of inflammation in animal models?
4. Can animal models be used to elucidate the temporal relationship between intestinal disease and development of EIMs?
5. How should animal models be used to investigate novel mechanisms and therapies such as neuroimmunomodulation?

3.6. Implications of the therapeutic effect of biologics and other treatments for EIMs

Emerging data for the efficacy of biologics for the treatment of EIMs may serve to expose underlying pathogenic mechanisms. Most evidence is available for anti-TNFα, with good response rates for cutaneous manifestations, arthritis, and ocular EIMs. This has implicated TNFα-dependent mechanisms in EIM pathophysiology.^{69–71,76} However, anti-TNFα drugs are increasingly recognized as causing drug-induced skin lesions, contributing to the burden of skin disease in IBD.^{77,78} The pathogenesis of these lesions remains unclear; blocking TNFα may result in an imbalance of cytokines [for example, increased IFNα release, which can cause psoriasis],^{79–81} and TNFα inhibition may lead to a reduced accumulation of Th1 and Th17 cells at the site of inflammation, but trigger a compensatory expansion at other locations.⁸² Female gender and family history of inflammatory skin disorders were identified as risk factors, which may also indicate a possible genetic predisposition for anti-TNFα-induced skin lesions.⁸³

The gut selective mechanism of the integrin α4β7 antibody vedolizumab should restrict its activity to the gut, since its counterpart MAdCAM1 is not expressed in the human skin.⁸⁴ The contribution of vedolizumab trials to understanding of EIM pathogenesis is complicated, since the evidence of its effect on EIMs appears to be conflicting: One case series did not show any positive effect,⁸⁵ whereas a recent analysis from France suggested positive effects on EIMs in most cases, but also revealed new onset of arthritis and paradoxical skin lesions.⁸⁶ The pathogenic mechanisms behind these observations remain elusive.⁸⁵ It may be speculated that a compensatory expansion of T cells at locations other than the gut could explain this phenomenon [similar to anti-TNFα-induced lesions]. On the other hand, a beneficial effect of vedolizumab on the disease activity of EIMs could occur if lymphocytes require the α4β7–MAdCAM1 interaction to gain access to the gut, where they are activated, followed by non-α4β7-dependent entry to extraintestinal sites. There is also evidence in animal models that some regulatory T cells require α4β7-dependent entry into the gut to be educated before expressing their function elsewhere; vedolizumab could theoretically interfere with this.^{87,88} An alternative hypothesis is that α4β7 is directly involved in homing to extraintestinal sites as outlined above. It remains likely that vedolizumab has the capacity to illuminate pathogenic pathways in EIMs.

Data on other biologic agents are limited. So far, no trial has been published evaluating the anti-IL12/23 antibody ustekinumab in the management of EIMs. Case series suggest it has efficacy in the treatment of anti-TNFα-induced skin lesions^{89,90}; however, development of pustular psoriasis has been described.⁹¹ Whether ustekinumab is effective in the treatment of non-drug-induced EIMs has yet to be determined. In contrast to anti-IL12/23 and despite the pathogenic role of Th17 cells in the development of colitis, trials with anti-IL-17A have failed in IBD with even higher adverse rates than placebo.⁹² Moreover, in contrast to its efficacy in other inflammatory disorders, anti-IL-17A can even exacerbate IBD activity,⁹³ which highlights a

	distinct involvement of the IL-17A pathway in these entities. No data on JAK inhibitors is available so far, but upregulation of STAT3 in erythema nodosum and pyoderma gangrenosum ⁸⁴ makes a response to JAK inhibitors reasonable to predict and sheds light on the possible involvement of the JAK-STAT pathway in cutaneous EIMs.	
7.5		
AQ17	Taken together, it is important that clinical trials and observational studies of biologic agents are designed to optimize the capture of data on effects on inflammation in systems other than those of the disease defined in the primary outcome.	
7.10		
	Open questions:	
	1. How does vedolizumab affect EIMs? Does it have the same effect on all EIMs?	
7.15	2. What is the implication of the overexpression of STAT for the prospect of using JAK-inhibitors for treating PG and EN?	
	3. How will EIM respond to IL12/23 treatment?	
7.20	4. Clinical Research	
	Despite the presence of a wide range of EIMs associated with IBD, standardized criteria for diagnosis, documentation or monitoring are lacking. Thus far, only one randomized controlled trial including IBD patients with EIMs has been conducted. ⁹⁴ Here we discuss the currently available paradigms and tools for clinical research in three of them: Skin, joint, and eye EIMs.	
7.25		
	4.1. Diagnosis and monitoring of EIMs	
7.30	Because the diagnostic and monitoring tools for EIMs have been developed within the organ-based specialties, this section is presented according to an organ-based structure.	
	4.1.1. Clinical criteria, indexes, and scales	
7.35	<i>Joint manifestations</i>	
	IBD-associated joint symptoms may be subdivided into inflammatory and non-inflammatory joint pain, [arthritis and arthralgia, respectively]. ^{95,96} Inflammatory arthropathies in IBD are the most common EIM and belong to the SpA group, with a prevalence of 20–50% for axial inflammation, ^{97–99} and 5–20% for peripheral arthritis. ^{100,101}	
7.40	The Assessment of SpondyloArthritis international Society [ASAS] developed classification criteria for both inflammatory axial and peripheral joint disease. These criteria are the current standard for clinical trials research and have good performance, as tested against the rheumatologist's diagnosis [Supplementary Figures 1 and 2]. ^{102–104} However, limited data evaluate ASAS criteria specifically in IBD patients. In IBD patients with inflammatory back pain, ASAS criteria have an equivalent sensitivity but lower specificity compared with non-IBD patients. ¹⁰⁵ This lower specificity may be due to the inclusion of IBD as one of the ASAS criteria of axial SpA. Alternative classification tools such as the Amor classification ¹⁰⁶ and the European Spondyloarthropathy Study Group [ESSG] criteria ¹⁰⁷ also include IBD as a criterion, whereas the older Modified New York classification do not. ¹⁰⁸ Nevertheless, in order to ensure applicability of research data to clinical practice, it is advantageous that the definition of patient groups in clinical trials and research is consistent with that used in rheumatology [i.e. ASAS criteria]. Therefore, validation of these currently used tools in IBD patients should be carried out.	
7.45		
AQ18		
7.50	Monitoring tools for determining response to treatment and disease outcomes have also been developed by ASAS. The current gold standard tool for axial SpA is the Ankylosing Spondylitis Disease Activity	
7.55		
AQ19		
7.60		
	Score [ASDAS], ¹⁰⁹ providing both a measurement of disease activity that may be followed over time, as well as cut-offs to allow grouping of patients into different disease activity states [Supplementary Figure 3]. ASDAS includes back pain as one of the criteria. Hence, it is not well-adapted for use in the 5–20% of IBD patients with peripheral arthritis. In response to the lack of validated outcome measures in peripheral SpA the authors of one randomized controlled trial of adalimumab in patients with non-psoriatic peripheral SpA developed a new outcome measure, the Peripheral SpA Response Criteria [PSpARC40] measured after 12 weeks of treatment. ¹¹⁰ However, this outcome measure has not been widely applied, and there is a need to validate the use of these tools in patients with multifocal inflammation.	7.65
		AQ20
		AQ21
		7.70
	<i>Eye manifestations</i>	7.75
	The most common eye EIMs are episcleritis and anterior uveitis. Scleritis and posterior or intermediate uveitis are rarer, but pose a greater potential risk to sight. Supplementary Figure 4 summarizes some of the more common types of inflammatory eye disease, as well as some of the ocular complications of IBD and its treatment. Episcleritis is usually treated topically with corticosteroids or non-steroidals. Uveitis may pose a greater diagnostic and therapeutic challenge. The SUN [Standardisation of Uveitis Nomenclature] classification is internationally acknowledged, and as such research and clinical trials in uveitis in IBD patients should follow this system [Supplementary Tables 2–7]. ^{111,112} SUN classification may be used both for diagnosis and classification of uveitis at presentation, as well as for monitoring disease progression. However, it is relevant to consider that the SUN classification may have limitations, especially for judging the significance of the outcome of clinical interventions. The FDA defines a significant clinical response as a two-step change in parameters of the SUN classification, but many successful therapies do not meet the required two-step improvement [especially in vitreous haze]. Furthermore, the SUN classification describes anterior chamber cells as in unequal steps [0, +0.5, +1, +2, and +3], estimated subjectively by the consulting ophthalmologist, which is therefore not optimal for quantitative research.	7.80
		7.85
		7.90
		7.95
	<i>Skin manifestations</i>	7.100
	Cutaneous manifestations are common in IBD patients ¹¹³ and include ectopic cutaneous IBD in addition to the other categories of pathologies as set out in Table 1. The diagnosis of cutaneous manifestations is principally based on clinical examination of the patient due to the inherently accessible nature of the skin. In atypical cases, a skin biopsy is helpful. ¹¹⁴ In skin disorders, such as psoriasis and eczema, specific indexes to objectively measure skin disease extent and activity have been developed (e.g. the Psoriasis Area Severity Index [PASI] ^{115–117} and the Eczema Area and Severity Index [EASI]). ¹¹⁸ However similar standardized assessment techniques for cutaneous EIMs of IBD, such as EN and PG, are lacking. The only randomized controlled trial of therapy for an EIM in IBD patients [infliximab for PG] employed a primary end point of clinical improvement at Week 2, as determined by the clinician and patient's global assessment of reduction in ulcer size and depth and the degree of undermining of the ulcer edge. ⁹⁴ Infliximab was shown to be superior to placebo, particularly in patients with disease duration of ≤3 months. Standardisation of assessment methods, such as that employed in this trial, will enhance reproducibility in clinical research as well as facilitating meta-analysis of EIM research.	7.105
		7.110
		7.115
		7.120
	In summary, current tools for the diagnosis of EIM have for the most part been developed in patients with unifocal inflammation.	7.122

- Studies to validate the use of these tools in patients with multifocal inflammation, including IBD patients, are needed. Even better would be a system of diagnosis and monitoring that reflects common pathogenic mechanisms that could then be applied to diseases generated by that common mechanism but manifesting in diverse clinical phenotypes.
- 8.5
- Open questions:
- 8.10
1. Are tools for monitoring of unifocal inflammation valid for use in patients with multifocal inflammation?
 2. If one of the criteria in an algorithm for diagnosing inflammatory pathology at an extraintestinal site is that the patient has IBD, will such an algorithm provide adequate diagnostic discrimination when applied to a population of IBD patients?
- 8.15
3. Is a single multidimensional scale for diagnosis and monitoring of inflammation at multiple sites possible? Is it desirable?
- 8.20
- 4.1.2. Biomarkers**
- There are no specific biomarkers for EIM activity in IBD, with acute-phase proteins ESR and CRP, leucocytosis, thrombocytosis, and anaemia being non-specific and, in addition, ESR and CRP having low sensitivity being elevated in only 40–50% of patients with axial SpA. Conversely, faecal calprotectin is only validated in the diagnosis and monitoring of gut inflammation and does not reflect disease activity at other sites.
- 8.25
- Genetic markers for SpA*
- 8.30
- Genetic factors may be utilized as biomarkers in the diagnosis of inflammatory pathology.^{119,120} Combining clinical factors with genetic data has been shown to be superior in predicting the development of EIMs compared with either alone. HLA-B27-positive IBD patients are at increased risk of developing AS.² Apart from HLA-B27, over 41 genes have been identified predisposing to AS.^{121,122}
- 8.35
- However, most of these have not been associated with increased risk for extra-articular inflammation. Currently there are neither reliable genetic biomarkers for peripheral SpA,^{119,123,124} nor for cutaneous or ocular EIMs.
- 8.40
- Imaging biomarkers for spondyloarthritis*
- Traditional X-rays are of value in diagnosing axial SpA, but only demonstrate changes in advanced cases. Magnetic resonance imaging usually demonstrates the first radiological changes in axial SpA and is—despite moderate sensitivity and specificity¹²⁵—the imaging test of choice for detection of early disease,^{126–128} as well as the best objective technique for assessing inflammatory disease activity.^{129–134} This assessment has been standardized with the use of the Bath Ankylosing Spondylitis Radiology Index [BASRI].¹³⁵ In peripheral arthritis, which is generally non-erosive, joint radiography is usually normal, so ultrasonography is often employed to confirm the diagnosis. In addition, there is no evidence to confirm or refute the assumption that radiological findings in inflammatory arthropathy differ between patients with only arthritis and those who also have inflammation at distal sites.
- 8.45
- 8.50
- 8.55
- Antimicrobial antibodies*
- IBD is associated with the presence of antibodies to a variety of microorganisms, such as anti-*Saccharomyces cerevisiae* antibodies [ASCA], antineutrophil cytoplasmic antibodies [ANCA], anti-I2 [associated with anti-*Pseudomonas* activity], anti-*Escherichia coli* outer membrane porin C [anti-OmpC], and anti-flagellin antibodies [anti-CBir1]. Subclinical intestinal inflammation has been reported to be present in a significant proportion of patients with radiographic axial SpA.^{136,137} The data on the presence of these antimicrobial antibodies in patients with both IBD and SpA are inconsistent and mostly relate to axial SpA. Anti-I2 antibodies have been associated with the combination of AS and intestinal inflammation,¹³⁷ as have antibodies against ASCA, anti-OmpC, and anti-CBir1.¹³⁸
- 8.65
- 8.70
- Open questions:
1. Should patients presenting with inflammatory pathologies be screened for multifocal inflammation?
 2. Which biomarkers would be most appropriate for screening and in which populations?
 3. Would biomarkers be useful for guiding therapeutic decisions, even in patients with unifocal inflammation [to reveal underlying mechanisms]?
- 8.75
- 8.80
- 4.2. Predictors and treatment of EIMs**
- 4.2.1. Predictors of EIMs**
- The identification of patients at risk of EIMs is desirable, because this raises the possibility not only of treatment initiation prior to permanent tissue destruction, but even the potential for disease prevention. Moreover, patients in whom a propensity to develop inflammatory disease has already declared itself in one system may provide a unique opportunity for targeted screening in order to detect inflammation at distant anatomical sites. Several studies have investigated factors influencing the risk of developing EIMs, but with inconsistent results. This is likely caused by differences across studies regarding definitions and assessment of EIMs as well as patient populations, since only very few population-based studies exist. Furthermore, the occurrence and risk factors for EIMs may also vary geographically.^{139–141}
- 8.85
- 8.90
- 8.95
- On the simplest level, demographic and clinical factors may be used to detect risk. For example, female sex,^{29,63,113,142–146} CD rather than UC,^{113,142,143,147,148} increasing age,^{29,143,149} long disease duration,^{142,143} colonic location in CD,^{100,143} extensive UC compared with proctitis,^{142,147} indicators of severe disease including the need for steroids,¹⁴⁶ azathioprine,¹⁴⁶ biologic therapy,²⁹ or surgery,^{100,144,148} and smoking both in CD^{29,148} and UC^{29,150} have all been associated with an increased risk for EIMs. However, these associations are not reported consistently and are not replicated in all population-based studies^{147–149} and, as such, this approach may have limited applicability in clinical practice. Genetic factors play an important role in determining the presence of EIMs,^{119,120} especially genes in the *HLA* region on chromosome 6, as described above.^{151–153} Combining clinical factors with genetic data has been shown to be superior for predicting the development of EIMs compared with either alone.^{119,124}
- 8.100
- 8.105
- 8.110
- 8.115
- Furthermore, specific features of the clinical presentation may alert the clinician to the potential for future EIMs. For example, IBD is in the differential of any patient with ocular inflammation, especially in the ‘typical’ constellation of bilateral anterior/intermediate granulomatous uveitis. Conversely, it is wise to monitor liver function tests, especially in the IBD patient presenting with the clinical picture of mild, extensive colitis with rectal sparing and backwash ileitis, often associated with PSC.
- 8.120
- 8.122
- Screening for IBD in patients with AS has been studied with some success, although the low rate of development of IBD in this group made the usefulness of screening somewhat questionable.¹⁵⁴ EIMs

are often tested for based on clinical suspicion; however, screening for secondary diagnoses in patients with inflammatory pathologies has not yet proved to be a fruitful strategy.

9.5 Open questions:

1. Can accurate predictors of EIMs be developed?
2. Once predictors are available: Can early intervention alter the future development of EIMs?

9.10

4.2.2. Treatment

A recent systematic review by Peyrin-Biroulet *et al.* based on nine interventional studies, seven open-label studies, and thirteen non-interventional studies found a good clinical efficacy of adalimumab and infliximab for the treatment of musculoskeletal, cutaneous, and ocular manifestations, and some beneficial effect in metabolic bone disease and haematological or vascular EIMs in IBD patients.¹⁵⁵ In contrast, no or limited efficacy of other biologic drugs, including certolizumab pegol, golimumab, vedolizumab, or natalizumab was identified. In this review, however, different ranges of pathology get grouped together, which may obscure the therapeutic effect for specific types of EIMs that share a common mechanism.

9.15

9.20

Paradoxically, drug-induced EIMs are well documented and hint at the complex effects that interference with immune function may have. This complexity is potentially compounded in patients with multifocal inflammation. The effect of vedolizumab, [which blocks $\alpha 4\beta 7$ -dependent migration of lymphocytes into the gut] on EIMs has been difficult to predict, as discussed above. Potentially vedolizumab may have no effect on extraintestinal inflammation due to its gut-selective nature; alternatively if lymphocytes causing extraintestinal inflammation require activation in the gut before migration to the distant site, then vedolizumab would be predicted to improve EIMs. Finally, if prevention of migration to the gut resulted in accumulation of lymphocytes at extraintestinal sites, then vedolizumab could cause exacerbation of EIMs. Of course, it may be that each of these mechanisms is present in different patients. Another treatment strategy that may be examined in the future is combination therapy with biologics with different molecular targets, for example, combined anti-integrin/anti-TNF α therapy for IBD patients with EIMs has shown some efficacy.¹⁵⁶

9.25

9.30

9.35

9.40

It has been hypothesized that the extent of inflammation [e.g. the size of ulcerations in PG] may determine optimal drug dosing, with larger ulcers requiring higher doses of the drug.⁹⁴ However no dose–response studies and no RCTs have been presented in IBD-EIM patients during the induction phase of anti-TNF α treatment to determine optimal trough levels.¹⁵⁷ The concept of relating drug dose to total inflammatory burden has instinctive validity and could potentially be of great relevance to patients with EIMs. However, this concept remains speculative at present and requires validation in clinical trials.¹⁵⁸

9.45

9.50

Open questions:

1. Is there a dose–response relationship between anti-TNF α therapy and EIM treatment response?
2. Are all anti-TNF α antibodies equally effective for the treatment of EIMs?
3. Is there an additive effect of combined immunosuppression in IBD patients with EIM?
4. Are optimal anti-TNF α trough levels for IBD patients with EIMs different from those for IBD patients without EIM?

9.55

9.60

4.3. Treat to target and patient-reported outcome measures in EIMs

A ‘treat to target’ strategy has been developed in many areas of medicine, in which treatment outcomes are defined by specific objective end points. The concept driving this strategy is that traditional outcome measures fail to reflect subclinical, yet active disease, permitting the accumulation of tissue damage over time. With a treat-to-target strategy therapy is intensified until the relevant evidence-based treatment target is in the desired range, which is associated with a reduction in end-organ destruction. For example in rheumatoid arthritis, scores such as the Disease Activity Score Calculator for Rheumatoid Arthritis [DAS-28] have been established.¹⁵⁹ This approach has also been used successfully in endocrinology, especially in diabetes management.^{160–162} Ongoing studies are developing this strategy in IBD.¹⁶³ Whether the same treatment targets developed for unifocal inflammation, can be applied [individually or perhaps in combination] in IBD-EIMs, or whether different targets should be developed, is unclear.

9.65

9.70

9.75

9.80

Another current advancement in the care of patients with chronic conditions is the development of Patient-Reported Outcome Measures [PROMs], which may themselves function as a treatment target. PROMs are defined by the FDA as “any report of the status of a patient’s health condition that comes directly from the patient, without interpretation of the patient’s response by a clinician or anyone else.”¹⁶⁴ PROMs may be disease specific, such as the Inflammatory Bowel Disease Questionnaire [IBDQ-32],¹⁶⁵ the Inflammatory Bowel Disease Quality of Life Questionnaire [IBDQOL],¹⁶⁶ or the Work Productivity and Activity Impairment: Crohn’s Disease [WPAI: CD].¹⁶⁷ The use of PROMs designed for the assessment of unifocal inflammation in patients with multifocal inflammation presents obvious drawbacks, potentially missing significant aspects of the patient’s experience. However, non-disease-specific instruments have been developed, such as the Short-Form Health Survey¹⁶⁸ and the EQ-5D,¹⁶⁹ which may be more applicable in multifocal inflammation.

9.85

9.90

9.95

Open questions:

9.100

1. What are appropriate treatment targets for patients with multifocal inflammation?
2. Can established treatment targets from patients with joint, skin, or eye disease be employed for patients with EIMs in IBD?
3. Would there be a difference in how PROMs and treat-to-target strategies function in patients with EIM activity that is synchronous with the IBD activity, compared with patients with asynchronous disease activity?

9.105

9.110

5. Conclusion

Determining the mechanisms that cause inflammation to manifest unifocally or multifocally in different patients remains an enticing conundrum in immunology. Solving this conundrum may illuminate novel mechanisms and reveal a broader range of therapeutic targets. In the context of the availability of a greater number of drugs aimed toward this broadening range of molecular targets, the previous organ-based approach to inflammatory disease may be inadequate. A holistic approach to the diagnosis and monitoring of inflammatory disease will allow a personalized therapeutic strategy. New tools for monitoring multifocal inflammation are needed in order to

9.115

AQ22

9.120

9.122

better capture the experience of the patient. This holistic approach to inflammatory disease requires greater cooperation between specialties and across research disciplines.

10.5

Funding

No study sponsors had any involvement in study design, data collection, interpretation, or writing of the manuscript.

10.10

Conflict of Interest

Charlotte Hedin: CH has received consulting fees or lecture honoraria from Abbvie, Ferring, Janssen, Pfizer, and Takeda, and research funding from Takeda.

10.15

Stephan Vavricka: SRV has served as consultant/received speaker fees from Abbvie, Janssen, MSD, Takeda, Falk, Ferring, UCB, Tillotts, and Vifor.

Andrea van der Meulen: AvdM has served as consultant for Takeda and received a research grant from Takeda.

Floris van Gaalen: FvG provided consultancy for MSD, Novartis, Pfizer, and Abbvie.

10.20

Andy Stagg: AS has received research funding from Takeda.

Alain Schoepfer: AS received consultancy and/or speaker fees from Abbvie, Adare, Falk, MSD, Pfizer, Takeda, UCB, Receptos, and Regeneron.

Lluís Puig: LP has received research/educational grants and/or speaker/consultation fees from Abbvie, Almirall, Amgen, Boehringer, Baxalta, Biogen, Boehringer, Ingelheim, Celgene, Gebro, Janssen, Leo-Pharma, Lilly, Merck-Serono, MSD, Mylan, Novartis, Pfizer, Regeneron, Roche, Sandoz, Sanofi, and UCB.

10.25

Tim Raine: TR has received research/educational grants and/or speaker/consultation fees from Abbvie, Gilead, GSK, Janssen, MSD, Novartis, Pfizer, Sandoz, and Takeda.

10.30

Uwe Peyer: UP has received research/educational grants and/or speaker/consultation fees from Abbvie, Alcon, Allergan, Novartis, Santen, and Thea.

Alexander Navarini: AK declares no conflicts of interest.

Jochen Maul: JM has provided consultancy and received payment for lectures from Abbvie, Falk Foundation, Janssen, MSD, Pfizer, and Takeda.

10.35

Yago Gonzalez Lama: YGL has served as consultant for Abbvie, Janssen, and Takeda, and has received research grants and speaker fees from Abbvie, MSD, and Takeda.

Kostas Katsanos: KHK received honoraria for consulting services [educational services, scientific articles, participation in Advisory Boards, clinical trials, other] from AbbVie, ENORASIS, Ferring, Genesis, Grifols S.A., JANSSEN, MSD, Shire, and Takeda.

10.40

Anna Kagramanova: AK declares no conflicts of interest.

Thomas Greuter: TG is a consultant for Sanofi Aventis, received a travel grant from Falk Pharma GmbH and Vifor, and an unrestricted research grant from Novartis.

10.45

Pierre Ellul: PE has received educational grants from Abbvie and MSD.

Johan Burisch: JB has received personal fees from AbbVie, Janssen-Cilag, Celgene, MSD, and Pfizer, and grants and personal fees from Takeda, outside the submitted work.

Dominik Bettenworth: DB has served as consultant for Abbvie, Janssen, Pharmacosmos, Takeda, and Tillots, and has received speaker fees from Abbvie, Falk, Ferring, MSD, Pfizer, Roche, Takeda, and Vifor.

10.50

Matthias Becker: MDB received research support from Novartis and Bayer, has received speaker fees from Allergan and Zeiss, and has provided consultancy to Allergan, Alcon, Santen, Zeiss, and AbbVie.

Giorgos Bamias: GB has received consulting fees or lecture honoraria from Pfizer, Ferring, Aenorasis, Janssen, Takeda, Cellgene, MSD, and Abbvie, and research grants from Takeda.

10.55

Florian Rieder: FR is on the advisory board for AbbVie, Celgene, Receptos, Thetis, Pfizer, Takeda, and UCB, has been a consultant to Samsung, UCB, Celgene, Cowen, Pliant, Boehringer-Ingelheim, Helmsley, RedX, Thetis, and Roche, and is on the speakers' bureau of AbbVie.

10.60

Author Contributions

This article is a result of a joint scientific workshop activity. Hence, all authors participated sufficiently, intellectually or practically, in the work to take public responsibility for the content of the article, including the conception, design, data interpretation, and writing of the article. The final version of the article was approved by all authors.

10.65

Supplementary Data

Supplementary data to this article can be found online at *ECCO-JCC* online.

10.70

References

1. Vavricka SR, Rogler G, Gantenbein C, *et al.* Chronological order of appearance of extraintestinal manifestations relative to the time of IBD diagnosis in the Swiss inflammatory bowel disease cohort. *Inflamm Bowel Dis* 2015;**21**:1794–800. 10.75
2. Harbord M, Annesse V, Vavricka SR, *et al.*; European Crohn's and Colitis Organisation. The first European evidence-based consensus on extra-intestinal manifestations in inflammatory bowel disease. *J Crohns Colitis* 2016;**10**:239–54. 10.80
3. Adams DH, Eksteen B. Aberrant homing of mucosal T cells and extra-intestinal manifestations of inflammatory bowel disease. *Nat Rev Immunol* 2006;**6**:244–51. 10.85
4. Trivedi PJ, Bruns T, Ward S, *et al.* Intestinal CCL25 expression is increased in colitis and correlates with inflammatory activity. *J Autoimmun* 2016;**68**:98–104. 10.90
5. Grant AJ, Lalor PF, Hübscher SG, Briskin M, Adams DH. MAdCAM-1 expressed in chronic inflammatory liver disease supports mucosal lymphocyte adhesion to hepatic endothelium [MAdCAM-1 in chronic inflammatory liver disease]. *Hepatology* 2001;**33**:1065–72. 10.95
6. Eksteen B, Grant AJ, Miles A, *et al.* Hepatic endothelial CCL25 mediates the recruitment of CCR9⁺ gut-homing lymphocytes to the liver in primary sclerosing cholangitis. *J Exp Med* 2004;**200**:1511–7. 10.100
7. Mann ER, McCarthy NE, Peake ST, *et al.* Skin- and gut-homing molecules on human circulating $\gamma\delta$ T cells and their dysregulation in inflammatory bowel disease. *Clin Exp Immunol* 2012;**170**:122–30. 10.105
8. Salmi M, Andrew DP, Butcher EC, Jalkanen S. Dual binding capacity of mucosal immunoblasts to mucosal and synovial endothelium in humans: dissection of the molecular mechanisms. *J Exp Med* 1995;**181**:137–49. 10.110
9. Salmi M, Jalkanen S. Human leukocyte subpopulations from inflamed gut bind to joint vasculature using distinct sets of adhesion molecules. *J Immunol* 2001;**166**:4650–7. 10.115
10. McNab G, Reeves JL, Salmi M, Hübscher S, Jalkanen S, Adams DH. Vascular adhesion protein 1 mediates binding of T cells to human hepatic endothelium. *Gastroenterology* 1996;**110**:522–8. 10.120
11. Lalor PF, Edwards S, McNab G, Salmi M, Jalkanen S, Adams DH. Vascular adhesion protein-1 mediates adhesion and transmigration of lymphocytes on human hepatic endothelial cells. *J Immunol* 2002;**169**:983–92. 10.122
12. Agace WW, Roberts AI, Wu L, Greineder C, Ebert EC, Parker CM. Human intestinal lamina propria and intraepithelial lymphocytes express receptors specific for chemokines induced by inflammation. *Eur J Immunol* 2000;**30**:819–26. 10.125
13. Yuan YH, ten Hove T, The FO, Slors JE, van Deventer SJ, te Velde AA. Chemokine receptor CXCR3 expression in inflammatory bowel disease. *Inflamm Bowel Dis* 2001;**7**:281–6. 10.128
14. Jacques P, McGonagle D. The role of mechanical stress in the pathogenesis of spondyloarthritis and how to combat it. *Best Pract Res Clin Rheumatol* 2014;**28**:703–10. 10.130
15. Kummel M, Holm K, Anmarkrud JA, *et al.* The gut microbial profile in patients with primary sclerosing cholangitis is distinct from patients with ulcerative colitis without biliary disease and healthy controls. *Gut* 2017;**66**:611–9. 10.135

10.122

16. Torres J, Bao X, Goel A, *et al.* The features of mucosa-associated microbiota in primary sclerosing cholangitis. *Aliment Pharmacol Ther* 2016;43:790–801.
- 11.5 17. Kevans D, Tyler AD, Holm K, *et al.* Characterization of intestinal microbiota in ulcerative colitis patients with and without primary sclerosing cholangitis. *J Crohns Colitis* 2016;10:330–7.
18. Scofield RH, Kurien B, Gross T, Warren WL, Harley JB. HLA-B27 binding of peptide from its own sequence and similar peptides from bacteria: Implications for spondyloarthropathies. *Lancet* 1995;345:1542–4.
- 11.10 19. Ramos M, Alvarez I, Sesma L, Logean A, Rognan D, López de Castro JA. Molecular mimicry of an HLA-B27–derived ligand of arthritis-linked subtypes with chlamydial proteins. *J Biol Chem* 2002;277:37573–81.
20. Horai R, Zárate-Bladés CR, Dillenburg-Pilla P, *et al.* Microbiota-dependent activation of an autoreactive T cell receptor provokes autoimmunity in an immunologically privileged site. *Immunity* 2015;43:343–53.
- 11.15 21. Nakamura YK, Janowitz C, Metea C, *et al.* Short chain fatty acids ameliorate immune-mediated uveitis partially by altering migration of lymphocytes from the intestine. *Sci Rep* 2017;7:11745.
22. Bodenheimer HC Jr, LaRusso NF, Thayer WR Jr, Charland C, Staples PJ, Ludwig J. Elevated circulating immune complexes in primary sclerosing cholangitis. *Hepatology* 1983;3:150–4.
- 11.20 23. Biancone L, Mandal A, Yang H, *et al.* Production of immunoglobulin G and G1 antibodies to cytoskeletal protein by lamina propria cells in ulcerative colitis. *Gastroenterology* 1995;109:3–12.
24. Geng X, Biancone L, Dai HH, *et al.* Tropomyosin isoforms in intestinal mucosa: Production of autoantibodies to tropomyosin isoforms in ulcerative colitis. *Gastroenterology* 1998;114:912–22.
- 11.25 25. Das KM, Sakamaki S, Vecchi M, Diamond B. The production and characterization of monoclonal antibodies to a human colonic antigen associated with ulcerative colitis: Cellular localization of the antigen by using the monoclonal antibody. *J Immunol* 1987;139:77–84.
- 11.30 26. Das KM, Vecchi M, Sakamaki S. A shared and unique epitope[s] on human colon, skin, and biliary epithelium detected by a monoclonal antibody. *Gastroenterology* 1990;98:464–9.
27. Bhagat S, Das KM. A shared and unique peptide in the human colon, eye, and joint detected by a monoclonal antibody. *Gastroenterology* 1994;107:103–8.
- 11.35 28. Parkes M, Cortes A, van Heel DA, Brown MA. Genetic insights into common pathways and complex relationships among immune-mediated diseases. *Nat Rev Genet* 2013;14:661–73.
29. Severs M, van Erp SJ, van der Valk ME, *et al.*; Dutch Initiative on Crohn and Colitis. Smoking is associated with extra-intestinal manifestations in inflammatory bowel disease. *J Crohns Colitis* 2016;10:455–61.
- 11.40 30. Park JH, Peyrin-Biroulet L, Eisenhut M, Shin JI. IBD immunopathogenesis: A comprehensive review of inflammatory molecules. *Autoimmun Rev* 2017;16:416–26.
- 11.45 31. Pastor Rojo O, López San Román A, Albéniz Arbizu E, de la Hera Martínez A, Ripoll Sevillano E, Albillos Martínez A. Serum lipopolysaccharide-binding protein in endotoxemic patients with inflammatory bowel disease. *Inflamm Bowel Dis* 2007;13:269–77.
32. Adenis A, Colombel JF, Lecouffe P, *et al.* Increased pulmonary and intestinal permeability in Crohn's disease. *Gut* 1992;33:678–82.
- 11.50 33. Sherlock JP, Joyce-Shaikh B, Turner SP, *et al.* IL-23 induces spondyloarthropathy by acting on ROR- γ ⁺ CD3⁺CD4⁺CD8⁻ enthesal resident T cells. *Nat Med* 2012;18:1069–76.
- 11.55 34. Condliffe AM, Kitchen E, Chilvers ER. Neutrophil priming: Pathophysiological consequences and underlying mechanisms. *Clin Sci [Lond]* 1998;94:461–71.
35. McCarthy DA, Rampton DS, Liu YC. Peripheral blood neutrophils in inflammatory bowel disease: Morphological evidence of *in vivo* activation in active disease. *Clin Exp Immunol* 1991;86:489–93.
- 11.60 36. Nikolaus S, Bauditz J, Gionchetti P, Witt C, Lochs H, Schreiber S. Increased secretion of pro-inflammatory cytokines by circulating polymorphonuclear neutrophils and regulation by interleukin 10 during intestinal inflammation. *Gut* 1998;42:470–6.
37. Smith AM, Rahman FZ, Hayee B, *et al.* Disordered macrophage cytokine secretion underlies impaired acute inflammation and bacterial clearance in Crohn's disease. *J Exp Med* 2009;206:1883–97.
38. Sanders TJ, McCarthy NE, Giles EM, *et al.* Increased production of retinoic acid by intestinal macrophages contributes to their inflammatory phenotype in patients with Crohn's disease. *Gastroenterology* 2014;146:1278–88.e1–2.
- 11.65 39. Clarke TB, Davis KM, Lysenko ES, Zhou AY, Yu Y, Weiser JN. Recognition of peptidoglycan from the microbiota by Nod1 enhances systemic innate immunity. *Nat Med* 2010;16:228–31.
40. Balmer ML, Schürch CM, Saito Y, *et al.* Microbiota-derived compounds drive steady-state granulopoiesis via MyD88/TICAM signaling. *J Immunol* 2014;193:5273–83.
- 11.70 41. Iwamura C, Bouladoux N, Belkaid Y, Sher A, Jankovic D. Sensing of the microbiota by NOD1 in mesenchymal stromal cells regulates murine hematopoiesis. *Blood* 2017;129:171–6.
42. Khosravi A, Yáñez A, Price JG, *et al.* Gut microbiota promote hematopoiesis to control bacterial infection. *Cell Host Microbe* 2014;15:374–81.
- 11.75 43. Shi C, Jia T, Mendez-Ferrer S, *et al.* Bone marrow mesenchymal stem and progenitor cells induce monocyte emigration in response to circulating toll-like receptor ligands. *Immunity* 2011;34:590–601.
44. Griseri T, McKenzie BS, Schiering C, Powrie F. Dysregulated hematopoietic stem and progenitor cell activity promotes interleukin-23–driven chronic intestinal inflammation. *Immunity* 2012;37:1116–29.
- 11.80 45. Askenase MH, Han SJ, Byrd AL, *et al.* Bone-marrow-resident NK cells prime monocytes for regulatory function during infection. *Immunity* 2015;42:1130–42.
46. Trompette A, Gollwitzer ES, Yadava K, *et al.* Gut microbiota metabolism of dietary fiber influences allergic airway disease and hematopoiesis. *Nat Med* 2014;20:159–66.
- 11.85 47. Kim YG, Udayanga KG, Totsuka N, Weinberg JB, Núñez G, Shibuya A. Gut dysbiosis promotes M2 macrophage polarization and allergic airway inflammation via fungi-induced PGE₂. *Cell Host Microbe* 2014;15:95–102.
- 11.90 48. Breban M, Tap J, Leboime A, *et al.* Faecal microbiota study reveals specific dysbiosis in spondyloarthritis. *Ann Rheum Dis* 2017;76:1614–22.
49. Tito RY, Cypers H, Joossens M, *et al.* Brief report: Dialister as a microbial marker of disease activity in spondyloarthritis. *Arthritis Rheumatol* 2017;69:114–21.
- 11.95 50. Scher JU, Ubeda C, Artacho A, *et al.* Decreased bacterial diversity characterizes the altered gut microbiota in patients with psoriatic arthritis, resembling dysbiosis in inflammatory bowel disease. *Arthritis Rheumatol* 2015;67:128–39.
51. Eppinga H, Thio HB, Schreurs MWJ, *et al.* Depletion of *Saccharomyces cerevisiae* in psoriasis patients, restored by dimethylfumarate therapy [DMF]. *PLoS One* 2017;12:e0176955.
- 11.100 52. Sabino J, Vieira-Silva S, Machiels K, *et al.* Primary sclerosing cholangitis is characterised by intestinal dysbiosis independent from IBD. *Gut* 2016;65:1681–9.
53. Bajer L, Kverka M, Kostovcik M, *et al.* Distinct gut microbiota profiles in patients with primary sclerosing cholangitis and ulcerative colitis. *World J Gastroenterol* 2017;23:4548–58.
- 11.105 54. Zinkernagel MS, Zysset-Burri DC, Keller I, *et al.* Association of the intestinal microbiome with the development of neovascular age-related macular degeneration. *Sci Rep* 2017;7:40826.
55. Wen X, Hu X, Miao L, *et al.* Epigenetics, microbiota, and intraocular inflammation: new paradigms of immune regulation in the eye. *Prog Retin Eye Res* 2018;64:84–95.
- 11.110 56. Crost EH, Tailford LE, Monestier M, *et al.* The mucin-degradation strategy of *Ruminococcus gnavus*: The importance of intramolecular trans-sialidases. *Gut Microbes* 2016;7:302–12.
57. Swann JR, Want EJ, Geier FM, *et al.* Systemic gut microbial modulation of bile acid metabolism in host tissue compartments. *Proc Natl Acad Sci U S A* 2011;108[Suppl 1]:4523–30.
- 11.115 58. Hedin CR, van der Gast CJ, Stagg AJ, Lindsay JO, Whelan K. The gut microbiota of siblings offers insights into microbial pathogenesis of inflammatory bowel disease. *Gut Microbes* 2017;8:359–65.
- 11.120 59. Hansen CH, Nielsen DS, Kverka M, *et al.* Patterns of early gut colonization shape future immune responses of the host. *PLoS One* 2012;7:e34043.
- 11.122

60. Montoya J, Matta NB, Suchon P, et al. Patients with ankylosing spondylitis have been breast fed less often than healthy controls: A case-control retrospective study. *Ann Rheum Dis* 2016;75:879–82.
- 12.5 61. van Sommeren S, Janse M, Karjalainen J, et al. Extraintestinal manifestations and complications in inflammatory bowel disease: From shared genetics to shared biological pathways. *Inflamm Bowel Dis* 2014;20:987–94.
62. Satsangi J, Grootcholten C, Holt H, Jewell DP. Clinical patterns of familial inflammatory bowel disease. *Gut* 1996;38:738–41.
- 12.10 63. Taleban S, Li D, Targan SR, et al. Ocular manifestations in inflammatory bowel disease are associated with other extra-intestinal manifestations, gender, and genes implicated in other immune-related traits. *J Crohns Colitis* 2016;10:43–9.
64. Peeters H, Vander Cruyssen B, Laukens D, et al. Radiological sacroiliitis, a hallmark of spondylitis, is linked with *CARD15* gene polymorphisms in patients with Crohn's disease. *Ann Rheum Dis* 2004;63:1131–4.
- 12.15 65. Martin TM, Smith JR, Rosenbaum JT. Anterior uveitis: Current concepts of pathogenesis and interactions with the spondyloarthropathies. *Curr Opin Rheumatol* 2002;14:337–41.
66. Kontoyiannis D, Pasparakis M, Pizarro TT, Cominelli F, Kollias G. Impaired on/off regulation of TNF biosynthesis in mice lacking TNF AU-rich elements: Implications for joint and gut-associated immunopathologies. *Immunity* 1999;10:387–98.
- 12.20 67. Bamias G, Dahman MI, Arseneau KO, et al. Intestinal-specific TNF α overexpression induces Crohn's-like ileitis in mice. *PLoS One* 2013;8:e72594.
68. Roulis M, Bongers G, Armaka M, et al. Host and microbiota interactions are critical for development of murine Crohn's-like ileitis. *Mucosal Immunol* 2016;9:787–97.
- 12.25 69. Apostolaki M, Manoloukos M, Roulis M, et al. Role of beta7 integrin and the chemokine/chemokine receptor pair CCL25/CCR9 in modeled TNF-dependent Crohn's disease. *Gastroenterology* 2008;134:2025–35.
70. Hammer RE, Maika SD, Richardson JA, Tang JP, Taurog JD. Spontaneous inflammatory disease in transgenic rats expressing HLA-B27 and human β_2m : An animal model of HLA-B27-associated human disorders. *Cell* 1990;63:1099–112.
- 12.30 71. DeLay ML, Turner MJ, Klenk EI, Smith JA, Sowders DP, Colbert RA. HLA-B27 misfolding and the unfolded protein response augment interleukin-23 production and are associated with Th17 activation in transgenic rats. *Arthritis Rheum* 2009;60:2633–43.
- 12.35 72. Turner MJ, Sowders DP, DeLay ML, et al. HLA-B27 misfolding in transgenic rats is associated with activation of the unfolded protein response. *J Immunol* 2005;175:2438–48.
73. Rath HC, Herfarth HH, Ikeda JS, et al. Normal luminal bacteria, especially *Bacteroides* species, mediate chronic colitis, gastritis, and arthritis in HLA-B27/human beta2 microglobulin transgenic rats. *J Clin Invest* 1996;98:945–53.
- 12.40 74. Ruutu M, Thomas G, Steck R, et al. β -glucan triggers spondylarthritis and Crohn's disease-like ileitis in SKG mice. *Arthritis Rheum* 2012;64:2211–22.
- 12.45 75. Benham H, Rehaume LM, Hasnain SZ, et al. Interleukin-23 mediates the intestinal response to microbial β -1,3-glucan and the development of spondyloarthritis pathology in SKG mice. *Arthritis Rheumatol* 2014;66:1755–67.
76. Milia AF, Ibba-Manneschi L, Manetti M, Benelli G, Messerini L, Matucci-Cerinic M. HLA-B27 transgenic rat: An animal model mimicking gut and joint involvement in human spondyloarthritides. *Ann N Y Acad Sci* 2009;1173:570–4.
- 12.50 77. Fiorino G, Allez M, Malesci A, Danese S. Review article: Anti TNF- α induced psoriasis in patients with inflammatory bowel disease. *Aliment Pharmacol Ther* 2009;29:921–7.
- 12.55 78. Fiorino G, Danese S, Pariente B, Allez M. Paradoxical immune-mediated inflammation in inflammatory bowel disease patients receiving anti-TNF- α agents. *Autoimmun Rev* 2014;13:15–9.
79. Palucka AK, Blanck JP, Bennett L, Pascual V, Banchereau J. Cross-regulation of TNF and IFN- α in autoimmune diseases. *Proc Natl Acad Sci U S A* 2005;102:3372–7.
- 12.60 80. de Gannes GC, Ghoreishi M, Pope J, et al. Psoriasis and pustular dermatitis triggered by TNF- α inhibitors in patients with rheumatologic conditions. *Arch Dermatol* 2007;143:223–31.
81. Nestle FO, Gilliet M. Defining upstream elements of psoriasis pathogenesis: An emerging role for interferon alpha. *J Invest Dermatol* 2005;125:xiv–xv. 12.65
82. Greuter T, Navarini A, Vavricka SR. Skin manifestations of inflammatory bowel disease. *Clin Rev Allergy Immunol* 2017;53:413–27.
83. Rahier JF, Buche S, Peyrin-Biroulet L, et al.; Groupe d'Etude Thérapeutique des Affections Inflammatoires du Tube Digestif [GETAID]. Severe skin lesions cause patients with inflammatory bowel disease to discontinue anti-tumor necrosis factor therapy. *Clin Gastroenterol Hepatol* 2010;8:1048–55. 12.70
84. Vavricka SR, Galván JA, Dawson H, et al. Expression patterns of TNF α , MAdCAM1, and STAT3 in intestinal and skin manifestations of inflammatory bowel disease. *J Crohns Colitis* 2018;12:347–54. 12.75
85. Varkas G, Thevissen K, De Brabanter G, et al. An induction or flare of arthritis and/or sacroiliitis by vedolizumab in inflammatory bowel disease: A case series. *Ann Rheum Dis* 2017;76:878–81.
86. Tadbiri S, Peyrin-Biroulet L, Serrero M, et al.; GETAID OBSERV-IBD study group. Impact of vedolizumab therapy on extra-intestinal manifestations in patients with inflammatory bowel disease: A multicentre cohort study nested in the OBSERV-IBD cohort. *Aliment Pharmacol Ther* 2018;47:485–93. 12.80
87. Hadis U, Wahl B, Schulz O, et al. Intestinal tolerance requires gut homing and expansion of FoxP3⁺ regulatory T cells in the lamina propria. *Immunity* 2011;34:237–46.
88. Cassani B, Villablanca EJ, Quintana FJ, et al. Gut-tropic T cells that express integrin $\alpha 4\beta 7$ and CCR9 are required for induction of oral immune tolerance in mice. *Gastroenterology* 2011;141:2109–18. 12.85
89. Tillack C, Ehmann LM, Friedrich M, et al. Anti-TNF antibody-induced psoriasisform skin lesions in patients with inflammatory bowel disease are characterised by interferon- γ -expressing Th1 cells and IL-17A/IL-22-expressing Th17 cells and respond to anti-IL-12/IL-23 antibody treatment. *Gut* 2014;63:567–77. 12.90
90. Andrisani G, Marzo M, Celleno L, et al. Development of psoriasis scalp with alopecia during treatment of Crohn's disease with infliximab and rapid response to both diseases to ustekinumab. *Eur Rev Med Pharmacol Sci* 2013;17:2831–6. 12.95
91. Gregoriou S, Kazakos C, Christofidou E, Kontochristopoulos G, Vakis G, Rigopoulos D. Pustular psoriasis development after initial ustekinumab administration in chronic plaque psoriasis. *Eur J Dermatol* 2011;21:104–5.
92. Hueber W, Sands BE, Lewitzky S, et al.; Secukinumab in Crohn's Disease Study Group. Secukinumab, a human anti-IL-17A monoclonal antibody, for moderate to severe Crohn's disease: Unexpected results of a randomised, double-blind placebo-controlled trial. *Gut* 2012;61:1693–700. 12.100
93. Hohenberger M, Cardwell LA, Oussedik E, Feldman SR. Interleukin-17 inhibition: Role in psoriasis and inflammatory bowel disease. *J Dermatolog Treat* 2018;29:13–18. 12.105
94. Brooklyn TN, Dunnill MG, Shetty A, et al. Infliximab for the treatment of pyoderma gangrenosum: A randomised, double blind, placebo controlled trial. *Gut* 2006;55:505–9.
95. Karreman MC, Luime JJ, Hazes JMW, Weel AEAM. The prevalence and incidence of axial and peripheral spondyloarthritis in inflammatory bowel disease: A systematic review and meta-analysis. *J Crohns Colitis* 2017;11:631–42. 12.110
96. Dougados M, Baeten D. Spondyloarthritis. *Lancet* 2011;377:2127–37.
97. Queiro R, Maiz O, Intxausti J, et al. Subclinical sacroiliitis in inflammatory bowel disease: A clinical and follow-up study. *Clin Rheumatol* 2000;19:445–9. 12.115
98. Peeters H, Vander Cruyssen B, Mielants H, et al. Clinical and genetic factors associated with sacroiliitis in Crohn's disease. *J Gastroenterol Hepatol* 2008;23:132–7.
99. de Vlam K, Mielants H, Cuvelier C, De Keyser F, Veys EM, De Vos M. Spondyloarthritis is underestimated in inflammatory bowel disease: Prevalence and HLA association. *J Rheumatol* 2000;27:2860–5. 12.120
- 12.122

100. Salvarani C, Vlachonikolis IG, van der Heijde DM, *et al.*; European Collaborative IBD Study Group. Musculoskeletal manifestations in a population-based cohort of inflammatory bowel disease patients. *Scand J Gastroenterol* 2001;36:1307–13.

13.5 101. Bourikas LA, Papadakis KA. Musculoskeletal manifestations of inflammatory bowel disease. *Inflamm Bowel Dis* 2009;15:1915–24.

102. Rudwaleit M, van der Heijde D, Landewé R, *et al.* The development of Assessment of SpondyloArthritis international Society classification criteria for axial spondyloarthritis [part II]: Validation and final selection. *Ann Rheum Dis* 2009;68:777–83.

13.10 103. Rudwaleit M, van der Heijde D, Landewé R, *et al.* The Assessment of SpondyloArthritis International Society classification criteria for peripheral spondyloarthritis and for spondyloarthritis in general. *Ann Rheum Dis* 2011;70:25–31.

13.15 104. Sepriano A, Rubio R, Ramiro S, Landewé R, van der Heijde D. Performance of the ASAS classification criteria for axial and peripheral spondyloarthritis: A systematic literature review and meta-analysis. *Ann Rheum Dis* 2017;76:886–90.

AQ23 105. Belousova EA, Odintsova D, Zakirov A, Nagornyykh R, Protopopov B, M. Performance of ASAS criteria for inflammatory back pain in patients with inflammatory bowel disease. *J Crohns Colitis* 2017;11.

13.20 106. Amor B, Dougados M, Mijiyawa M. Criteria of the classification of spondylarthropathies. *Rev Rhum Mal Osteoartic* 1990;57:85–9.

107. Dougados M, van der Linden S, Juhlin R, *et al.* The European Spondylarthropathy Study Group preliminary criteria for the classification of spondylarthropathy. *Arthritis Rheum* 1991;34:1218–27.

13.25 108. van der Linden S, Valkenburg HA, Cats A. Evaluation of diagnostic criteria for ankylosing spondylitis. A proposal for modification of the New York criteria. *Arthritis Rheum* 1984;27:361–8.

109. van der Heijde D, Lie E, Kvien TK, *et al.*; Assessment of SpondyloArthritis international Society [ASAS]. ASDAS, a highly discriminatory ASAS-endorsed disease activity score in patients with ankylosing spondylitis. *Ann Rheum Dis* 2009;68:1811–8.

13.30 110. Mease P, Sieper J, Van den Bosch F, Rahman P, Karunaratne PM, Pangan AL. Randomized controlled trial of adalimumab in patients with nonpsoriatic peripheral spondyloarthritis. *Arthritis Rheumatol* 2015;67:914–23.

111. Trusko B, Thorne J, Jabs D, *et al.*; Standardization of Uveitis Nomenclature [SUN] Project. The Standardization of Uveitis Nomenclature [SUN] Project. Development of a clinical evidence base utilizing informatics tools and techniques. *Methods Inf Med* 2013;52:259–65, S1–6.

13.35 112. Jabs DA, Nussenblatt RB, Rosenbaum JT; Standardization of Uveitis Nomenclature [SUN] Working Group. Standardization of uveitis nomenclature for reporting clinical data. Results of the First International Workshop. *Am J Ophthalmol* 2005;140:509–16.

13.40 113. Vavricka SR, Brun L, Ballabeni P, *et al.* Frequency and risk factors for extraintestinal manifestations in the Swiss inflammatory bowel disease cohort. *Am J Gastroenterol* 2011;106:110–9.

13.45 114. Vavricka SR, Schoepfer A, Scharl M, Lakatos PL, Navarini A, Rogler G. Extraintestinal manifestations of inflammatory bowel disease. *Inflamm Bowel Dis* 2015;21:1982–92.

115. Fredriksson T, Pettersson U. Severe psoriasis—oral therapy with a new retinoid. *Dermatologica* 1978;157:238–44.

116. Marks R, Barton SP, Shuttleworth D, Finlay AY. Assessment of disease progress in psoriasis. *Arch Dermatol* 1989;125:235–40.

13.50 117. Ramsay B, Lawrence CM. Measurement of involved surface area in patients with psoriasis. *Br J Dermatol* 1991;124:565–70.

118. Hanifin JM, Thurston M, Omoto M, Cherill R, Tofte SJ, Graeber M. The eczema area and severity index [EASI]: assessment of reliability in atopic dermatitis. EASI Evaluator Group. *Exp Dermatol* 2001;10:11–8.

13.55 119. Weizman A, Huang B, Berel D, *et al.* Clinical, serologic, and genetic factors associated with pyoderma gangrenosum and erythema nodosum in inflammatory bowel disease patients. *Inflamm Bowel Dis* 2014;20:525–33.

120. Alonso A, Domènech E, Julià A, *et al.* Identification of risk loci for Crohn's disease phenotypes using a genome-wide association study. *Gastroenterology* 2015;148:794–805.

121. Cortes A, Hadler J, Pointon JP, *et al.*; International Genetics of Ankylosing Spondylitis C. Identification of multiple risk variants for ankylosing spondylitis through high-density genotyping of immune-related loci. *Nat Genet* 2013;45:730–8.

13.65 122. Reveille JD. Biomarkers for diagnosis, monitoring of progression, and treatment responses in ankylosing spondylitis and axial spondyloarthritis. *Clin Rheumatol* 2015;34:1009–18.

123. Prajzlerová K, Grobelná K, Pavelka K, Šenolt L, Filková M. An update on biomarkers in axial spondyloarthritis. *Autoimmun Rev* 2016;15:501–9.

13.70 124. Menti E, Lanera C, Lorenzoni G, *et al.*; Piedmont Study Group on the Genetics of IBD. Bayesian machine learning techniques for revealing complex interactions among genetic and clinical factors in association with extra-intestinal manifestations in IBD patients. *AMIA Annu Symp Proc* 2016;2016:884–93.

125. van Gaalen FA, Bakker PA, de Hooge M, Schoones JW, van der Heijde D. Assessment of sacroiliitis by radiographs and MRI: Where are we now? *Curr Opin Rheumatol* 2014;26:384–8.

126. Atzeni F, Defendenti C, Ditto MC, *et al.* Rheumatic manifestations in inflammatory bowel disease. *Autoimmun Rev* 2014;13:20–3.

127. Hermann KG, Baraliakos X, van der Heijde DM, *et al.*; Assessment in SpondyloArthritis international Society [ASAS]. Descriptions of spinal MRI lesions and definition of a positive MRI of the spine in axial spondyloarthritis: a consensual approach by the ASAS/OMERACT MRI study group. *Ann Rheum Dis* 2012;71:1278–88.

13.80 128. Sudol-Szopińska I, Pracoń G. Diagnostic imaging of psoriatic arthritis. Part II: magnetic resonance imaging and ultrasonography. *J Ultrason* 2016;16:163–74.

129. D'Agostino MA, Aegerter P, Bechara K, *et al.* How to diagnose spondyloarthritis early? Accuracy of peripheral enthesitis detection by power Doppler ultrasonography. *Ann Rheum Dis* 2011;70:1433–40.

130. Maksymowych WP. Progress in spondylarthritis. Spondyloarthritis: Lessons from imaging. *Arthritis Res Ther* 2009;11:222.

13.90 131. van der Heijde D, Landewé R, van der Linden S. How should treatment effect on spinal radiographic progression in patients with ankylosing spondylitis be measured? *Arthritis Rheum* 2005;52:1979–85.

132. Spoorenberg A, de Vlam K, van der Linden S, *et al.* Radiological scoring methods in ankylosing spondylitis. Reliability and change over 1 and 2 years. *J Rheumatol* 2004;31:125–32.

133. Baraliakos X, Landewé R, Hermann KG, *et al.* Inflammation in ankylosing spondylitis: A systematic description of the extent and frequency of acute spinal changes using magnetic resonance imaging. *Ann Rheum Dis* 2005;64:730–4.

13.100 134. Braun J, Baraliakos X, Golder W, *et al.* Magnetic resonance imaging examinations of the spine in patients with ankylosing spondylitis, before and after successful therapy with infliximab: Evaluation of a new scoring system. *Arthritis Rheum* 2003;48:1126–36.

135. MacKay K, Mack C, Brophy S, Calin A. The bath ankylosing spondylitis radiology index [BASRI]: A new, validated approach to disease assessment. *Arthritis Rheum* 1998;41:2263–70.

13.105 136. Van Praet L, Van den Bosch FE, Jacques P, *et al.* Microscopic gut inflammation in axial spondyloarthritis: A multiparametric predictive model. *Ann Rheum Dis* 2013;72:414–7.

137. Mundwiler ML, Mei L, Landers CJ, Reveille JD, Targan S, Weisman MH. Inflammatory bowel disease serologies in ankylosing spondylitis patients: A pilot study. *Arthritis Res Ther* 2009;11:R177.

138. Wallis D, Asaduzzaman A, Weisman M, *et al.* Elevated serum anti-flagellin antibodies implicate subclinical bowel inflammation in ankylosing spondylitis: An observational study. *Arthritis Res Ther* 2013;15:R166.

13.115 139. Jiang L, Xia B, Li J, *et al.* Retrospective survey of 452 patients with inflammatory bowel disease in Wuhan city, central China. *Inflamm Bowel Dis* 2006;12:212–7.

140. Burisch J, Pedersen N, Čuković-Čavka S, *et al.*; EpiCom-group. East-West gradient in the incidence of inflammatory bowel disease in Europe: The ECCO-EpiCom inception cohort. *Gut* 2014;63:588–97.

13.120 141. Ng SC, Zeng Z, Niewiadomski O, *et al.* Early course of inflammatory bowel disease in a population-based inception cohort study from 8

13.122

- countries in Asia and Australia. *Gastroenterology* 2016;150:86–95.e3; quiz e13–4.
- 14.5 142. Lakatos L, Pandur T, David G, et al. Association of extraintestinal manifestations of inflammatory bowel disease in a province of western Hungary with disease phenotype: Results of a 25-year follow-up study. *World J Gastroenterol* 2003;9:2300–7.
143. Roberts H, Rai SN, Pan J, et al. Extraintestinal manifestations of inflammatory bowel disease and the influence of smoking. *Digestion* 2014;90:122–9.
- 14.10 144. Karmiris K, Avgerinos A, Tavernaraki A, et al. Prevalence and characteristics of extra-intestinal manifestations in a large cohort of Greek patients with inflammatory bowel disease. *J Crohns Colitis* 2016;10:429–36.
145. Orchard TR, Wordsworth BP, Jewell DP. Peripheral arthropathies in inflammatory bowel disease: Their articular distribution and natural history. *Gut* 1998;42:387–91.
- 14.15 146. Vegh Z, Kurti Z, Gonczi L, et al. Association of extraintestinal manifestations and anaemia with disease outcomes in patients with inflammatory bowel disease. *Scand J Gastroenterol* 2016;51:848–54.
147. Isene R, Bernklev T, Høie O, et al.; EC-IBD Study Group. Extraintestinal manifestations in Crohn's disease and ulcerative colitis: Results from a prospective, population-based European inception cohort. *Scand J Gastroenterol* 2015;50:300–5.
- 14.20 148. Ott C, Takses A, Obermeier F, Schnoy E, Müller M. Smoking increases the risk of extraintestinal manifestations in Crohn's disease. *World J Gastroenterol* 2014;20:12269–76.
- 14.25 149. Bernstein CN, Blanchard JF, Rawsthorne P, Yu N. The prevalence of extraintestinal diseases in inflammatory bowel disease: A population-based study. *Am J Gastroenterol* 2001;96:1116–22.
150. Manguso F, Sanges M, Staiano T, et al. Cigarette smoking and appendectomy are risk factors for extraintestinal manifestations in ulcerative colitis. *Am J Gastroenterol* 2004;99:327–34.
- 14.30 151. Orchard TR, Holt H, Bradbury L, et al. The prevalence, clinical features and association of HLA-B27 in sacroiliitis associated with established Crohn's disease. *Aliment Pharmacol Ther* 2009;29:193–7.
152. Orchard TR, Chua CN, Ahmad T, Cheng H, Welsh KI, Jewell DP. Uveitis and erythema nodosum in inflammatory bowel disease: Clinical features and the role of HLA genes. *Gastroenterology* 2002;123:714–8.
- 14.35 153. Orchard TR, Thiyagaraja S, Welsh KI, Wordsworth BP, Hill Gaston JS, Jewell DP. Clinical phenotype is related to HLA genotype in the peripheral arthropathies of inflammatory bowel disease. *Gastroenterology* 2000;118:274–8.
- 14.40 154. Klingberg E, Strid H, Ståhl A, et al. A longitudinal study of fecal calprotectin and the development of inflammatory bowel disease in ankylosing spondylitis. *Arthritis Res Ther* 2017;19:21.
- 14.45 155. Peyrin-Biroulet L, Van Assche G, Gómez-Ulloa D, et al. Systematic review of tumor necrosis factor antagonists in extraintestinal manifestations in inflammatory bowel disease. *Clin Gastroenterol Hepatol* 2017;15:25–36.e27.
156. Hirten R, Longman RS, Bosworth BP, Steinlauf A, Scherl E. Vedolizumab and infliximab combination therapy in the treatment of Crohn's disease. *Am J Gastroenterol* 2015;110:1737–8.
157. Vande Casteele N, Herfarth H, Katz J, Falck-Ytter Y, Singh S. American Gastroenterological Association Institute technical review on the role of therapeutic drug monitoring in the management of inflammatory bowel diseases. *Gastroenterology* 2017;153:835–57.e6.
158. Peyrin-Biroulet L, Panés J, Sandborn WJ, et al. Defining disease severity in inflammatory bowel diseases: Current and future directions. *Clin Gastroenterol Hepatol* 2016;14:348–54.e17.
159. Pincus T, Gibofsky A, Weinblatt ME. Urgent care and tight control of rheumatoid arthritis as in diabetes and hypertension: Better treatments but a shortage of rheumatologists. *Arthritis Rheum* 2002;46:851–4.
160. Rachmani R, Slavacheski I, Berla M, Frommer-Shapira R, Ravid M. Treatment of high-risk patients with diabetes: Motivation and teaching intervention: A randomized, prospective 8-year follow-up study. *J Am Soc Nephrol* 2005;16[Suppl 1]:S22–6.
161. Eeg-Olofsson K, Cederholm J, Nilsson PM, Gudbjörnsdóttir S, Eliasson B; Steering Committee of the Swedish National Diabetes Register. Glycemic and risk factor control in type 1 diabetes: Results from 13,612 patients in a national diabetes register. *Diabetes Care* 2007;30:496–502.
162. Patel A, MacMahon S, Chalmers J, et al.; ADVANCE Collaborative Group. Effects of a fixed combination of perindopril and indapamide on macrovascular and microvascular outcomes in patients with type 2 diabetes mellitus [the ADVANCE trial]: A randomised controlled trial. *Lancet* 2007;370:829–40.
163. Peyrin-Biroulet L, Sandborn W, Sands BE, et al. Selecting therapeutic targets in inflammatory bowel disease [STRIDE]: Determining therapeutic goals for treat-to-target. *Am J Gastroenterol* 2015;110:1324–38.
164. ~~U.S. Department of Health and Human Services FDA Center for Drug Evaluation and Research; U.S. Department of Health and Human Services FDA Center for Biologics Evaluation and Research; U.S. Department of Health and Human Services FDA Center for Devices and Radiological Health. Guidance for industry: Patient-reported outcome measures: Use in medical product development to support labeling claims. In: Office of Communications DoDI, Center for Drug Evaluation and Research, Food and Drug Administration, ed, 2009.~~ 14.90 AQ24
165. Guyatt G, Mitchell A, Irvine EJ, et al. A new measure of health status for clinical trials in inflammatory bowel disease. *Gastroenterology* 1989;96:804–10.
166. Love JR, Irvine EJ, Fedorak RN. Quality of life in inflammatory bowel disease. *J Clin Gastroenterol* 1992;14:15–9.
167. Reilly MC, Zbrozek AS, Dukes EM. The validity and reproducibility of a work productivity and activity impairment instrument. *Pharmacoeconomics* 1993;4:353–65.
168. Ware J Jr, Kosinski M, Keller SD. A 12-item short-form health survey: Construction of scales and preliminary tests of reliability and validity. *Med Care* 1996;34:220–33.
169. Cheung KO, Oemar M, Oppe M, Rabin R. *EQ-5D User Guide: Basic Information on how to use the EQ-5D Version 2.0*. Rotterdam: EuroQoL Group; 2009.
- 14.110
- 14.115
- 14.120
- 14.122