



THE UNIVERSITY *of* EDINBURGH

Edinburgh Research Explorer

The Long Pentraxin PTX3 Is of Major Importance Among Acute Phase Proteins in Chickens

Citation for published version:

Burkhardt, NB, Röhl, S, Staudt, A, Elleder, D, Härtle, S, Costa, T, Alber, A, Stevens, MP, Vervelde, L, Schusser, B & Kaspers, B 2019, 'The Long Pentraxin PTX3 Is of Major Importance Among Acute Phase Proteins in Chickens' *Frontiers in Immunology*, vol. 10, pp. 124. DOI: 10.3389/fimmu.2019.00124

Digital Object Identifier (DOI):

[10.3389/fimmu.2019.00124](https://doi.org/10.3389/fimmu.2019.00124)

Link:

[Link to publication record in Edinburgh Research Explorer](#)

Document Version:

Publisher's PDF, also known as Version of record

Published In:

Frontiers in Immunology

Publisher Rights Statement:

Copyright © 2019 Burkhardt, Röhl, Staudt, Elleder, Härtle, Costa, Alber, Stevens, Vervelde, Schusser and Kaspers. This is an open-access article distributed under the terms of the Creative Commons Attribution License (CC BY). The use, distribution or reproduction in other forums is permitted, provided the original author(s) and the copyright owner(s) are credited and that the original publication in this journal is cited, in accordance with accepted academic practice. No use, distribution or reproduction is permitted which does not comply with these terms.

General rights

Copyright for the publications made accessible via the Edinburgh Research Explorer is retained by the author(s) and / or other copyright owners and it is a condition of accessing these publications that users recognise and abide by the legal requirements associated with these rights.

Take down policy

The University of Edinburgh has made every reasonable effort to ensure that Edinburgh Research Explorer content complies with UK legislation. If you believe that the public display of this file breaches copyright please contact openaccess@ed.ac.uk providing details, and we will remove access to the work immediately and investigate your claim.





The Long Pentraxin PTX3 Is of Major Importance Among Acute Phase Proteins in Chickens

Nina B. Burkhardt¹, Susanne Röhl¹, Anke Staudt¹, Daniel Elleder², Sonja Härtle¹, Taiana Costa³, Andreas Alber³, Mark P. Stevens³, Lonneke Vervelde³, Benjamin Schusser⁴ and Bernd Kaspers^{1*}

¹ Department for Veterinary Sciences, Ludwig-Maximilians-Universität Munich, Munich, Germany, ² Institute of Molecular Genetics of the Academy of Sciences of the Czech Republic, Prague, Czechia, ³ The Roslin Institute and Royal (Dick) School of Veterinary Studies, University of Edinburgh, Edinburgh, United Kingdom, ⁴ Reproductive Biotechnology, Technical University of Munich, School of Life Sciences Weihenstephan, Freising, Germany

OPEN ACCESS

Edited by:

Victor P. M. G. Rutten,
Utrecht University, Netherlands

Reviewed by:

Paulina Schmitt,
Pontificia Universidad Católica de
Valparaíso, Chile
Kieran G. Meade,
Teagasc, The Irish Agriculture and
Food Development Authority, Ireland
Gisela F. Erf,
University of Arkansas, United States
Tina Sørensen Dalgaard,
Aarhus University, Denmark

*Correspondence:

Bernd Kaspers
Kaspers@lmu.de

Specialty section:

This article was submitted to
Comparative Immunology,
a section of the journal
Frontiers in Immunology

Received: 16 August 2018

Accepted: 15 January 2019

Published: 01 February 2019

Citation:

Burkhardt NB, Röhl S, Staudt A,
Elleder D, Härtle S, Costa T, Alber A,
Stevens MP, Vervelde L, Schusser B
and Kaspers B (2019) The Long
Pentraxin PTX3 Is of Major Importance
Among Acute Phase Proteins in
Chickens. *Front. Immunol.* 10:124.
doi: 10.3389/fimmu.2019.00124

The expression level of acute phase proteins (APPs) mirrors the health status of an individual. In human medicine, C-reactive protein (CRP), and other members of the pentraxin family are of significant relevance for assessing disease severity and prognosis. In chickens, however, which represent the most common livestock species around the world, no such marker has yet gained general acceptance. The aim of this study was therefore, to characterize chicken pentraxin 3 (chPTX3) and to evaluate its applicability as a general marker for inflammatory conditions. The mammalian and chicken PTX3 proteins were predicted to be similar in sequence, domain organization and polymeric structure. Nevertheless, some characteristics like certain sequence sections, which have varied during the evolution of mammals, and species-specific glycosylation patterns, suggest distinct biological functions. ChPTX3 is constitutively expressed in various tissues but, interestingly, could not be found in splenic tissue samples without stimulation. However, upon treatment with lipopolysaccharide (LPS), PTX3 expression in chicken spleens increased to 95-fold within hours. A search for PTX3 reads in various publicly available RNA-seq data sets of chicken spleen and bursa of Fabricius also showed that PTX3 expression increases within days after experimental infection with viral and bacterial pathogens. An experimental infection with avian pathogenic *E. coli* and qPCR analysis of spleen samples further established a challenge dose-dependent significant up-regulation of chPTX3 in subclinically infected birds of up to over 150-fold as compared to untreated controls. Our results indicate the potential of chPTX3 as an APP marker to monitor inflammatory conditions in poultry flocks.

Keywords: chicken, pentraxin, acute phase proteins, inflammation, next generation sequencing, LPS, avian pathogenic *E. coli*

INTRODUCTION

The poultry industry is a fast-growing and intensive branch of the food economy and it is likely to gain even more relevance in the future. This development is due to the chickens' extraordinarily good feed conversion ratio and their low methane and carbon dioxide production (1), which makes chickens a financially rewarding and environmentally sound meat source. To further maintain

chicken health, parameters indicating pathological conditions before they are clinically visible are highly demanded, but no valuable marker for general inflammation in chickens has been established so far.

Potential candidates for such markers may be found within the class of the acute phase proteins (APPs) (2). APPs are positively or negatively regulated during the acute phase response (APR) as a reaction to proinflammatory cytokine secretion shortly after impact of inflammatory stimuli and represent an unspecific immune reaction (3, 4). They are classified as major (>10-fold), moderate (4 to 10-fold), or minor APPs (2 to 3-fold) according to their fold increase after application of an inflammatory stimulus (5). An increased expression of APPs, especially of members of the pentraxin family, has previously been associated with a variety of pathological conditions like cancer (6), acute and chronic inflammatory disease (7–9) and psychosocial stress (10) in mammals. C-reactive protein (CRP), which was discovered in 1930 (11), is among the most important markers for the severity of inflammatory diseases in clinical human medicine (12).

There is a growing body of information concerning the acute phase response in chickens. The most commonly examined chicken APPs are ceruloplasmin, ovotransferrin, and α 1-acid glycoprotein (13–15). They are classified as moderate APPs (5). Ceruloplasmin and ovotransferrin are both important antioxidants. Ceruloplasmin catalyzes the oxidation of Fe^{2+} and thereby prevents the formation of free radicals (16). Ovotransferrin binds Fe^{3+} and its high affinity for this ion provides protection against iron-catalyzed free radical formation and also inhibits bacterial growth (17). α 1-acid glycoprotein is a pH-dependent, unspecific carrier of lipophilic compounds, which is most effective in a basic or neutral environment (18). Surprisingly, most acute phase markers established in human medicine are classified only as minor or moderate APPs in chickens (5). CRP and mannose-binding lectin (MBL), for example, two of the major mammalian APPs, have been found to increase expression only around 2-fold in response to *Ascaridia galli* infestation (19). MBL is also weakly up-regulated in serum at 3 days post infection with IBV (20), 2 days after inoculation of *E. coli* (21), and 16 h after LPS challenge (22). However, a variable genetic background of chicken lines and individuals, that strongly influences the constitutive expression of MBL, has been found (23), indicating that the value of MBL—and therefore also of other minor and moderate APPs—as marker proteins must be considered carefully. The investigation of major chicken acute phase proteins hence is crucial for establishing a general health marker for this species.

SAA, which is in humans known to be up-regulated in osteoarthritis and might potentially contribute to the formation of the disease (24), has been investigated in chickens and is

classified as the only major APP in this species so far (5). It was found that SAA serum concentrations increase strongly 24 to 48 h after *Enterococcus faecalis* injection (25) and other stimuli (26). More recent studies, however, revealed a less pronounced up-regulation of SAA after infection with IBDV and IBV (27, 28) and thereby object its classification as a major APP.

Among other APPs, such as haptoglobin, complement C3 and α 2-macroglobulin, members of the pentraxin family are of particular relevance during the human APR (29–31). Pentraxin family members are characterized by a C-terminal pentraxin domain, which contains the eight amino acid pentraxin signature motif. This short sequence is highly conserved among pentraxins. While the so-called short pentraxins, like the classical APPs CRP and Serum amyloid P (SAP), consist solely of the pentraxin domain, the long family members like Pentraxin 3 (PTX3) possess a second, N-terminal domain (32). As the cysteine residues C47, C49, and C103 within the N-terminal domain of human PTX3 form interchain disulfide bridges (33), quaternary structures of the prototypic short and long pentraxins vary due to the missing N-terminal domain in short pentraxins (32). Human PTX3 forms asymmetric, cyclic octamers (33).

PTX3 has been studied intensively in mice and humans, revealing its multiple roles in immunity. It contributes to prevention of bacterial (34), viral (35), and fungal (36) infections and is associated with autoimmune diseases, such as systemic lupus erythematosus, ankylosing spondylitis and multiple sclerosis (37). Despite the magnitude of information concerning structure, function, and expression patterns of mammalian PTX3, the chicken equivalent has been neglected to date. Interestingly, our group recently found PTX3 to be strongly induced in chickens after IFN- α application. It became evident that, compared to control animals, PTX3 expression in spleens of birds that have been injected with this cytokine increased 685-fold 3 h after injection, whereas CRP was not detected at all (38). This massive increase in PTX3 expression after immune stimulation indicates the potential relevance of PTX3 among APPs in chickens.

In this study, we investigate the predicted protein structure of chPTX3 and its expression patterns under non-inflammatory and inflammatory conditions and thereby evaluate its importance as a general marker for inflammatory conditions in birds.

MATERIALS AND METHODS

Sequence Alignment, Phylogenetic Analysis, and Prediction of Protein Characteristics

Species-specific PTX3 sequences were obtained from Ensemble (<https://www.ensembl.org/>; human: ENST00000295927.3; mouse: ENSMUST00000029421.5; bovine: ENSBTAT00000011863.4; porcine: ENSSSCT00000012837.4; chicken: ENSGALT00000045711.2; frog: ENSXETT00000026752.2; zebra fish: ENSDART00000112933.3). Sanger-sequencing of PCR products for alignment was commissioned to GATC Biotech AG, Konstanz, Germany. The sequences were aligned via ClustalX2 (<http://www.clustal>

Abbreviations: APEC, Avian Pathogenic *E. coli*; APP, acute phase protein; APR, acute phase response; CFU, colony forming units; chPTX3, chicken Pentraxin 3; CRP, C-reactive Protein; CTR, control; dpi, days post infection; GaHV2, Gallid Alpha herpesvirus 2; hpi, hours post infection; IBDV, Infectious Bursal Disease Virus; LPS, lipopolysaccharide from *E. coli*; MBL, mannose-binding lectin; MW, molecular weight; NGS, next generation sequencing; RIN, RNA integrity number; RPKM, reads per kilobase per million mapped reads; SAA, serum amyloid A; SAP, serum amyloid P; SRA, sequence read archive.

org) and further edited with GeneDoc2.7 (<http://genedoc.software.informer.com>). Sequence similarities and identities were calculated using LALIGN by ExPasy (http://embnet.vital-it.ch/software/LALIGN_form.html). N-glycosylation sites were predicted using the NetNGlyc 1.0 Server (<http://www.cbs.dtu.dk/services/NetNGlyc/>). For phylogenetic analysis, protein sequences of the above mentioned species-specific PTX3 transcripts were obtained from ensemble and aligned via Muscle Alignment in MEGA (<https://www.megasoftware.net/>). The resulting alignment was used to create a maximum likelihood tree using 1,000 bootstraps and complete deletion of missing data. Otherwise, default settings were used. Molecular weight prediction was executed using ExPasy (https://web.expasy.org/compute_pi/).

Expression of Recombinant chPTX3

The cDNA sequence of chPTX3 was amplified using full length primers (sense: 5' TTACAAGGATGACGATGACAAGCTTCCGTGCTGGATGAAGGC 3'; antisense: 5' CTGAGATGAGTTT TGTCTCTAGATTAAGAAACATACTGAGCTCCTCCATATAG 3'; manufactured by Eurofins Scientific, Hamburg, Germany) and Phusion[®] DNA polymerase (Thermo Fisher Scientific, Waltham, MA, USA) according to the manufacturers' instructions. As a template, cDNA transcribed from RNA isolated from the spleen of a chicken injected with lipopolysaccharide from *Salmonella enterica* serovar Typhimurium (LPS) (see section Treatment of Chickens With LPS) was used. The obtained sequence was cloned into p3xFlag-Myc-CMV-25 (Sigma-Aldrich, Taufkirchen, Germany) with the NEBuilder Assembly Kit (New England Biolabs, Frankfurt a.M., Germany) according to the manufacturer's instructions. HEK293 cells were stably transfected with the construct p3xFlag-Myc-CMV-25-chPTX3 using X-tremeGENE 9 DNA Transfection Reagent[™] (Sigma-Aldrich, Taufkirchen, Germany) according to the manufacturer's instructions. After transfection, 0.25 mg G418 per ml medium was added for clonal selection after every third cell passage. The resulting recombinant protein carries an N-terminal 3x FLAG tag.

Purification of Recombinant chPTX3

Recombinant chPTX3 was purified from supernatant of stably transfected HEK293 cells using a Glass Econo-Column[®] (Bio-Rad Laboratories, Munich, Germany) packed with ANTI-FLAG[®] M2 Affinity Gel (Sigma-Aldrich, Taufkirchen, Germany) and eluted from the gel matrix with 0.1 M glycine-HCl pH 3.5. The pH of the purified protein was neutralized by addition of 30 μ l 1 M tris-HCl pH 8.0 per ml eluate.

Western Blot

After SDS-polyacrylamide gel electrophoresis, Western blot analysis was carried out as described elsewhere (39). Purified recombinant chPTX3 protein was visualized by anti-Flag immunostaining (mouse IgG1 anti-Flag (M2)-HRP; Sigma-Aldrich, St. Louis, MO, USA) and subsequent chemiluminescence. Reducing conditions were established by addition of a final concentration of 25 mM Dithiothreitol (Applichem, Darmstadt, Germany) to the samples before

electrophoresis. Deglycosylation was carried out by incubation with PNGaseF (New England Biolabs, Frankfurt a.M., Germany), according to the manufacturer's protocol.

Analysis of Publicly Available RNA-Seq Data

The chPTX3 nucleotide sequence was used as a query in BLAST searches against Short Read Archive (SRA) files obtained from NCBI (<https://www.ncbi.nlm.nih.gov/sra/>) using an expected threshold of $1e-10$, a word size of 7 and the highest possible number for maximum target sequences. The number of hits was put at a ratio to query size and file size, resulting in a calculated estimate of gene expression (reads per kilobase per million mapped reads; RPKM).

Chickens

Treatment of Chickens With LPS

Six-week-old Lohmann Selected Leghorn chickens (Gut Heinrichsruh, Berglern, Germany), vaccinated only against Marek's disease, were conventionally housed for 5 days prior to the experiment. Water and a commercial diet were provided *ad libitum*. On the day of the experiment, chickens were randomly divided into two groups of six, of which one group was injected intravenously with 10 μ g LPS from *S. Typhimurium* (Sigma-Aldrich, Taufkirchen, Germany; L6511) per kg body weight in 100 μ l PBS (LPS) while the other group received PBS only (CTR). Three hours after injection, all animals were euthanized and tissue samples were collected. Animal experiments were approved by the Government of Upper Bavaria, License number 55.2-1-54-2531-121-09.

Experimental Infection With APEC O1

Chickens of the inbred line 7_2 (B^2) were hatched and reared under specified pathogen-free conditions with *ad libitum* access to feed and water. At the age of 2 weeks, the birds were inoculated with 7.3×10^4 colony forming units (CFU), 1.1×10^6 CFU or 8.8×10^6 CFU APEC serotype O1:K1:H7 strain O1 (40) (gratefully received from Prof Lisa Nolan, Iowa State University, USA) in 100 μ l PBS or with 100 μ l PBS as control administered into the right thoracic air sac. APEC O1 inoculated birds ($N = 6$ per inoculation dose) and control birds ($N = 3$) were culled at 14 hours post infection (hpi), 3 days post infection (dpi) or 7 dpi. All birds were housed in premises licensed under UK Home Office Establishment Licenses (X212DDDBD and XA40CEF03) in full compliance with the requirements of the Animals (Scientific Procedures) Act 1986. Procedures were conducted under license PPL 60/4420 with the consent of The Moredun Research Institute Ethical Review Committee.

Tissue Sampling

Tissue samples used for this study were collected immediately after euthanasia of the animals and either kept in ice cold sterile PBS for immediate RNA preparation or transferred to autoclaved 1.5 ml snap-cap cups and snap frozen in liquid nitrogen.

Enumeration of Viable Bacteria

Spleen samples were collected in tubes with 500 μ l sterile PBS and weighed. The tissues were homogenized using a TissueLyser II (Qiagen, Manchester, UK), ten-fold serial dilutions in PBS prepared and 100 μ l plated onto antibiotic free MacConkey agar plates (Oxoid, Basingstoke, UK). The plates were incubated at 37°C overnight before *E. coli* colonies were counted to calculate the number of colony-forming units (CFU)/g of tissue.

RNA Preparation

RNA of chicken tissue samples was isolated with TriFast reagent (Peqlab, Erlangen, Germany) according to the manufacturer's instructions. RNA quality was determined using a Bioanalyzer (Agilent, Santa Clara, CA, USA); only RNA with a minimum RNA integrity number (RIN) of 8.0 was used for further analyses.

cDNA Synthesis

A total of 1 μ g RNA per sample was digested by DNase I (Thermo Fisher Scientific, Waltham, MA, USA) for 30 min at 37°C. DNase I was inactivated by addition of 2.5 mM EDTA and incubation at 65°C for 10 min. 400 ng of the DNA-free RNA was subsequently transcribed into cDNA using the GOScript kit (Promega, Madison, WI, USA) according to the manufacturer's protocol.

PCR

PCR analysis was performed using Taq-Polymerase (Solis BioDyne, Tartu, Estonia) and respective buffers according to the manufacturer's instructions, and cDNA of the samples of interest as a template. For analysis of chPTX3 expression in lymphoid tissues, primers spanning the adjoining region of the pentraxin domain at the C-terminus and the N-terminal domain were used to avoid potential amplification of short pentraxins (sense: 5' ACCAACCTGAGGATGCTG 3'; antisense: 5' CCGTAGGAG AAGATGATGGTT 3') at an annealing temperature of 49°C and an extension time of 30 sec. GAPDH expression (Primer sense: 5' CACGGACACTTCAAGGGCACTG 3'; primer antisense: 5' CTCCACAATGCCAAAGTTGTC 3'; annealing temperature: 50°C; extension time: 20 sec) was used for normalization. After 34 cycles, PCR products were mixed with one sixth volume of 6x loading buffer with GelRed (GenScript Biotech, Piscataway, NJ, USA) and loaded on a 1.2% agarose gel in TBE buffer (90 mM tris, 90 mM boric acid, 2 mM EDTA-Na₂, pH 8.0). After voltage application of 130 V for 25 min, resulting bands were visualized under ultraviolet light.

RNA-seq Analysis

mRNA libraries were prepared from 1 ng RNA from five LPS-treated spleens and five spleens of mock-treated chickens each, using the Sense mRNA Seq Library Kit V2 (Lexogen, Vienna, Austria) according to the manufacturer's instructions. Next-generation sequencing (NGS) was performed on the Illumina HiSeq 1,500 Platform (Illumina, Munich, Germany), producing single-end 100 bp reads (Gene Center, Laboratory for Functional Genome Analysis, LMU Munich, Germany). Read filtering, *de novo* assembly, and alignment to the galGal4 chicken genome was performed in Galaxy (<https://usegalaxy.org/>) as described elsewhere (41). FASTA files containing the aligned data were created. Only genes with a minimum 4-fold expression change between groups and an adjusted *p*-value of <0.001 were included in further analysis. The home-made scripts used for detailed analysis workflow are available upon request.

org/) as described elsewhere (41). FASTA files containing the aligned data were created. Only genes with a minimum 4-fold expression change between groups and an adjusted *p*-value of <0.001 were included in further analysis. The home-made scripts used for detailed analysis workflow are available upon request.

Quantitative RT-PCR

SYBR Green-based quantitative RT-PCR (qPCR) was performed with cDNA as a template, using GoTaq qPCR Master Mix (Promega, Madison, WI, USA) according to the manufacturer's instructions with a final concentration of 1x of a chicken PTX3-specific commercial QuantiTect Primer Assay (Qiagen, Hilden, Germany) or 300 nM each of GAPDH primers (Primer sense: 5' AGGGTGGTGCTAAGCGTGTT 3'; primer antisense: 5' AAGGGTGCCAGGCAGTTG 3'), respectively. Primer efficiency was determined using serial dilutions of a cDNA mix and was 96% for PTX3 and 93% for GAPDH. In addition to the primers, each 25 μ l reaction contained 12.5 μ l of the GoTaq qPCR Master Mix, 0.25 μ l 100x CXR Reference Dye, 4.25 μ l of nuclease-free water, and 5 μ l of cDNA (10 ng). The cycling conditions were set to 95°C/2 min, followed by 40 cycles of 95°C/15 s, 59 (GAPDH) or 56°C (PTX3)/30 s, 72°C/30 s. Each assay included relevant non-template controls. A melting curve performed following each run confirmed a single, specific PCR product. Raw data created by a 7,300 Real-Time PCR System[®] (Applied Biosystems, Foster City, CA, USA) was analyzed using the SDS 7,300 software (Applied Biosystems). GAPDH expression was used for normalization (=dCT) and relative expression was calculated for each group (2^{dCT}) (42).

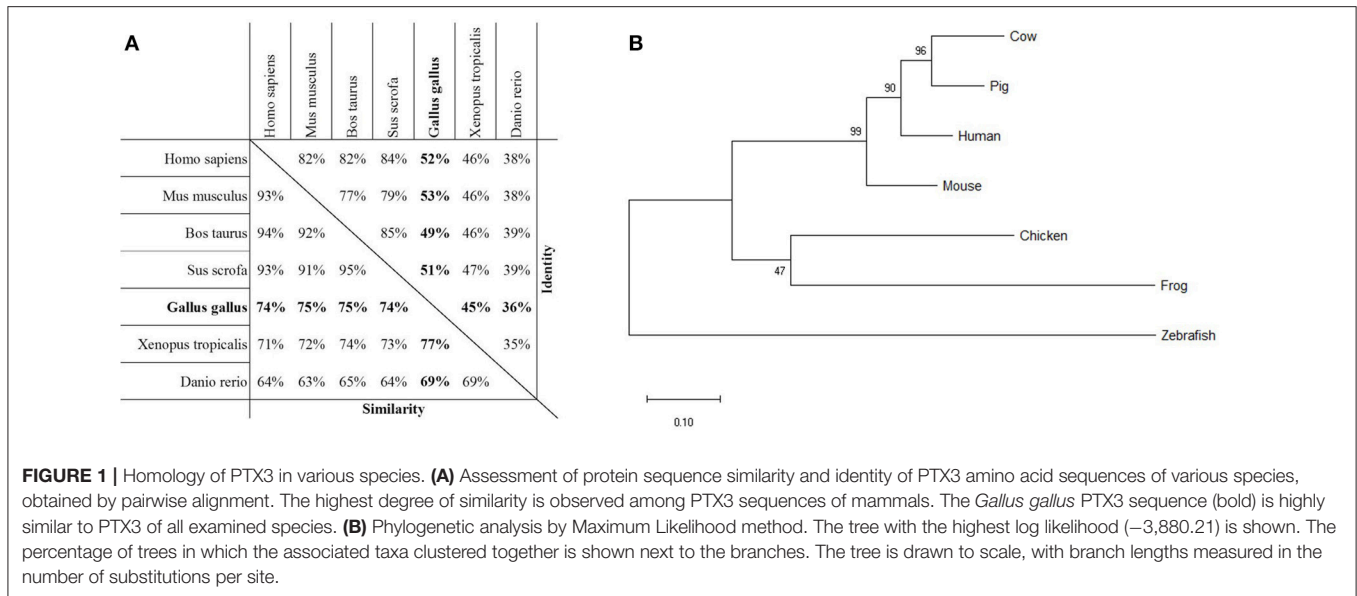
Statistical Analysis

As all data were distributed normally, a *T*-test was applied for statistical analysis. *P*-values were considered significant * at *p* ≤ 0.05, ** at *p* ≤ 0.01, and *** at *p* ≤ 0.005. Where error bars are shown, they represent the standard deviation for the respective set of samples.

RESULTS

Chicken and Mammalian Pentraxin 3 Are Homologs

As a first step toward the characterization of PTX3 in chickens, we evaluated the extent of similarity between the PTX3 protein sequences of chickens and other species. Thereby, we aimed to acquire information on possible alterations in structure of the proteins. The amino acid sequence of chPTX3 was aligned with its counterparts in humans (*Homo sapiens*), mice (*Mus musculus*), cattle (*Bos taurus*), swine (*Sus scrofa*), frogs (*Xenopus tropicalis*), and zebra fish (*Danio rerio*). The alignment (Figure S1) shows an extensive consensus in the pentraxin domain and parts of the N-terminal domain, with an overall sequence similarity of between 69 and 77 %, depending on the species, over the 433 amino acids of the chPTX3 sequence. Overall, 36 to 53 % of the amino acid residues were identical (Figure 1A), verifying that chPTX3 is a close homolog of PTX3 in

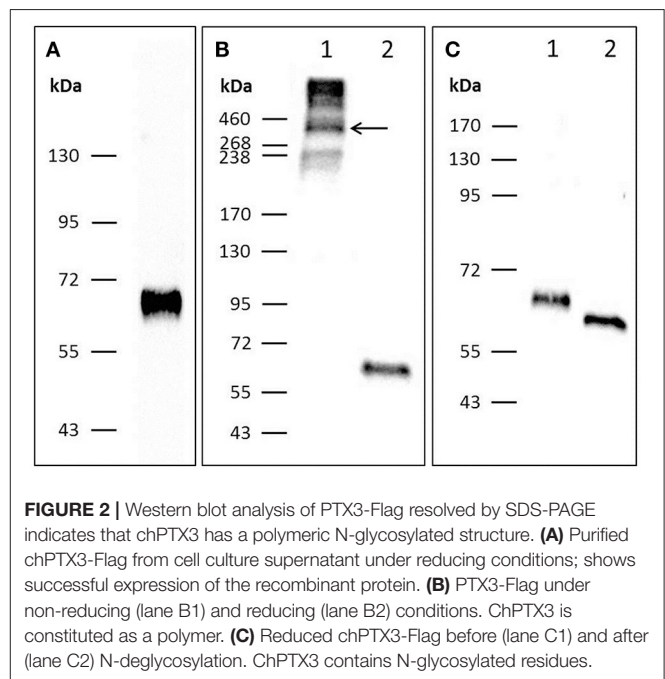


other species. A phylogenetic analysis of PTX3 protein sequences of the above mentioned species emphasizes the homology and the higher degree of similarity between the mammalian sequences as compared to the lower vertebrates (Figure 1B), as seen in Figure 1A. A closer look at the alignment shows two extended areas within the N-terminal domain in non-mammalian species, which elongate these sequences by a total of roughly 50 amino acids compared to humans and other mammals. The chicken protein features insertions of 27 amino acids between A100 and R101 and 18 amino acids between R188 and A189 of the human protein, respectively (underlined sequence parts in Figure S2). The existence of these elongated sections in the chicken sequence was verified by sequencing of thymus and spleen PCR products spanning this area (Figure S2).

Analogous to the high overall sequence similarity, certain characteristic features are similar between species. For example, the eight amino acid pentraxin signature sequence (dotted line) and a number of disulfide bond forming cysteine residues (triangles) are conserved (Figure S1). Interestingly, cysteine residue C103 in human PTX3 (upside-down triangle in Figure S1) is not conserved in chickens, while all other cysteines known to be structurally important, are. N-glycosylation sites differ more widely between species. Whereas human, mouse, and bovine PTX3 only have one predicted N-glycosylation site each, and porcine PTX3 lacks these sites completely, the non-mammalian species examined here all have two asparagine residues with presumed N-glycosylation (compare asterisks in Figure S1).

Recombinant chPTX3 Is a Polymeric N-glycosylated Protein

To further analyze the structure of chPTX3, its sequence was cloned into p3xFlag-Myc-CMV-25 and transfected into HEK-293 cells to achieve expression of Flag-tagged chPTX3 (Figure 2A).



Western blot analysis under non-reducing (Figure 2B, lane 1) and reducing conditions (Figure 2B, lane 2) revealed a polymeric structure of PTX3 in chicken, as reported for mammalian PTX3 (43). The molecular weight (MW) of polymeric PTX3 could not be determined exactly by means of Western blot analysis. However, concluding from Figure 2B, lane 1, the protein is likely to display a variable polymeric organization. The predicted molecular weight of the monomer is 47353.41 Da. As Figure S1 shows, there are two predicted N-glycosylation sites in chPTX3. Western blot analysis of chPTX3-Flag has also been carried out

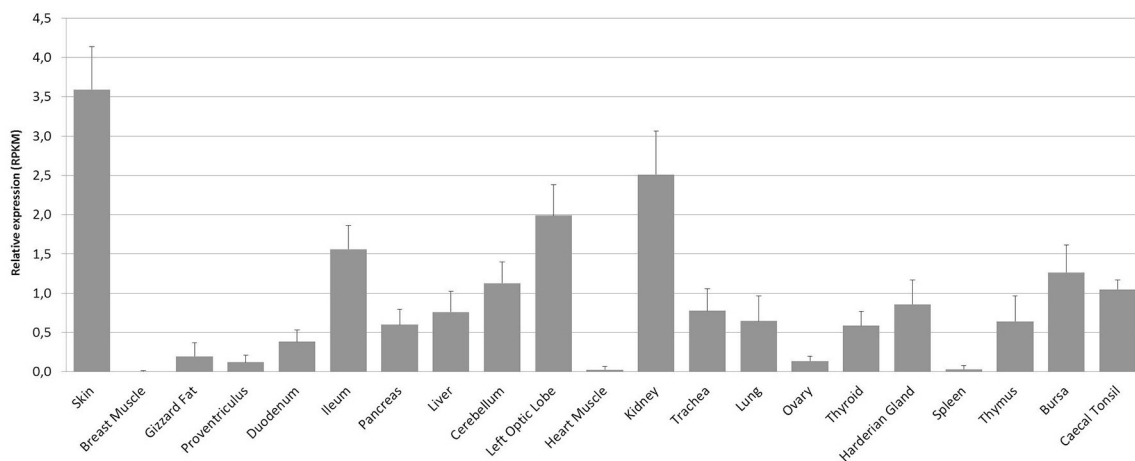


FIGURE 3 | Mean constitutive PTX3 expression in chicken tissue samples from RNA-seq dataset PRJEB12891. RNA-seq data was downloaded from the Short Read Archive (SRA) database for a total of 168 samples (21 tissues per bird) and blasted for PTX3 reads. Relative expression of PTX3 was assessed for each sample. Data shown represent the mean value of the respective tissue; error bars indicate standard deviation from the mean. ChPTX3 expression pattern varies prominently between tissues. The highest expression is observed in skin and kidney, the least in muscle, ovary, and spleen. Lymphoid tissue samples, except for spleen, express moderate amounts of PTX3 in chickens. $N = 8$.

after PNGase F treatment, which eliminates N-glycosylations (Figure 2C). A drop of the MW of monomeric PTX3 after N-deglycosylation of ~5 kDa was detected (Figure 2C, lane 2), which indicates that at least one N-glycosylation site is present within the protein.

Constitutive PTX3 Expression Differs Widely Between Chicken Tissues

We next examined the constitutive expression pattern of PTX3 in various chicken tissues. A comprehensive study, executed by The Roslin Institute in Edinburgh, UK, produced RNA-seq libraries of 21 organ samples derived from eight 16 to 17 weeks old healthy female J-line individuals each (NCBI BioProject accession number: PRJEB12891). We found PTX3 transcripts within these data. Figure 3 shows that PTX3 expression varies prominently between native tissue samples. Muscular organs like breast muscle, proventriculus, and heart show a very low expression or no detectable expression at all. In duodenum and ileum as well as in the glands appending to the intestine (pancreas and liver) a moderate PTX3 expression is observed. This is consistent with the PTX3 expression in other mesenchymal, non-lymphoid organs examined (cerebellum, optic lobe, kidney, trachea, lung, ovary, and thyroid), which also express PTX3 to a moderate to high extent. The highest expression was observed in skin samples. Interestingly, all lymphoid organs except for the spleen, which apparently did not express PTX3 in any of the eight examined samples, show moderate PTX3 expression levels, as well. To verify these results, we conducted an RT-PCR analysis on samples of lymphoid tissues of one chicken from our facility. As RNA-seq data had suggested, no expression was found in splenic tissue, while the Harderian gland, thymus, bursa, and caecal tonsil did constitutively express considerable amounts of chPTX3 (Figure 4).

Bioinformatics and Experimental Approaches Prove Up-Regulation of chPTX3 in Response to Viral and Bacterial Stimuli

To further investigate the importance of chPTX3 as an acute phase protein in chicken, we first analyzed a number of RNA-seq data sets, generated within three different studies in laboratories at the Henan Institute for Science and Technology, the Iowa State University, and the Key Laboratory of Animal Immunology of the Chinese Ministry of Agriculture to gain a comprehensive overview. As Table 1 shows, PTX3 was up-regulated in all three studies. At 1 and 3 dpi with Infectious Bursal Disease Virus (IBDV), PTX3 was 12 and 20-fold up-regulated, respectively, in samples from the bursa of Fabricius. The same tissue up-regulated PTX3 after experimental APEC O1 infection. Although up-regulation could already be shown at 1 dpi, it only became significant at 5 dpi. Another interesting example for a late occurring regulation is the infection with the Gallid Alpha herpesvirus 2 (GaHV2). In this case, PTX3 expression in spleens was slightly elevated at 7 and 14 dpi, but not at 3 dpi, before it finally rose to a 29-fold increase at 21 dpi. The data obtained from these studies suggest that PTX3 may play an important role in experimentally induced inflammatory disease in chickens.

Since RNA-seq data had shown a consistent PTX3 up-regulation in a variety of infections, but with distinct regulation patterns, we next analyzed the PTX3 response to a more general inducer of inflammation. We therefore examined data of an RNA-seq study assessing the response in splenic tissue samples of Broiler and Fayoumi chickens to LPS from *Salmonella* Typhimurium (44). Analysis revealed a significant up-regulation in both breeds 3.5 h after LPS treatment compared to mock-treated animals, with 95-fold up-regulation in broilers

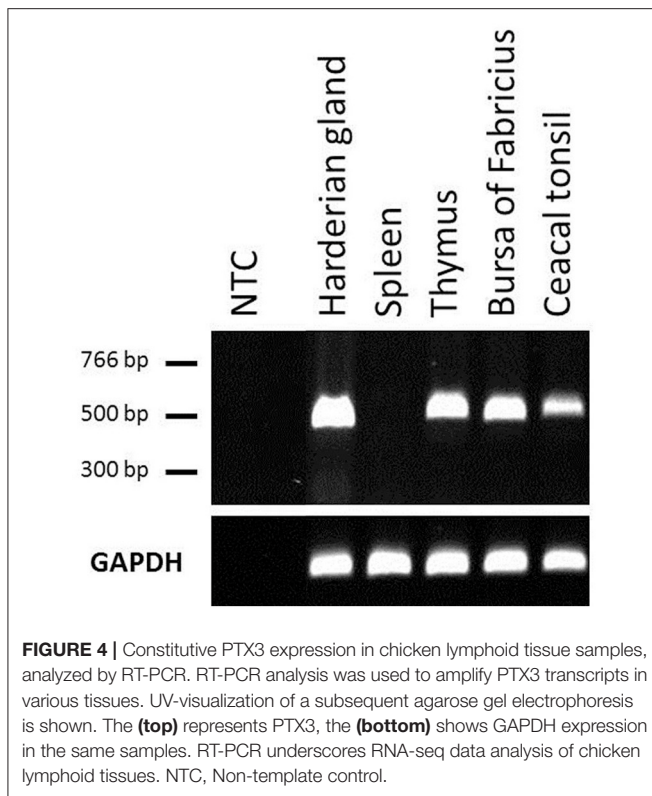


TABLE 1 | PTX3 up-regulation as published in RNA-seq datasets.

Inflammatory stimulus	Tissue	Study ID	Timepoint	n	Fold change
IBDV	Bursa	PRJNA369862	1 dpi	3	12
			3 dpi	2	20
APEC	Bursa	PRJNA288323	5 dpi	4	4
GaHV2	Spleen	PRJNA341964	21 dpi	1	29

(**Figure 5A**) and a 3.5-fold induction in the Fayoumi breed (**Figure 5B**).

There are only few comprehensive studies on APPs in chickens to date. To gain a thorough picture of the chicken acute phase reaction, we injected LPS intravenously into White Leghorn layer birds and isolated mRNA from spleens 3 h later. An mRNA library of each sample was analyzed by NGS. Processing of NGS data resulted in a total of 175 differentially expressed genes with a fold change of at least four between groups, of which 133 were expressed more intensely in LPS-treated chickens compared to controls (data not shown). The 15 most strongly up-regulated genes are shown in **Table 2**. Of the 15 most strongly up-regulated genes, 10 (**Table 2** No. 3-6, 9-13, 15) are associated with the GO-term “response to stimulus” (GO:0050896), which is twice as many genes as would have been expected statistically. Among the genes associated with GO:0050896, transcription of the acute phase protein PTX3 (**Table 2** No. 3) was up-regulated most intensively with a fold-change of 108.

Since NGS data confirmed PTX3 to be strongly induced by LPS in layer chickens, tissue samples of the same experiment

were subjected to qPCR analysis. The results are presented in **Figure 6** and confirm the RNA-seq findings for the spleens and also show an up-regulation of chPTX3 in the livers of these animals. The difference in normalized cut-off thresholds between LPS-stimulated and control spleens and livers was 9.0 and 4.7, respectively, which converts into fold changes of 507 in spleens and 26 in livers.

To further validate our finding that bacterial components, shown here for LPS (**Table 2** and **Figure 6**), are able to strongly induce PTX3 expression in chickens, the next step was to use an experimental infection with APEC O1 and evaluate the PTX3 expression in spleens of infected and control chickens. We therefore selected White Leghorn line 7₂ chickens, an inbred chicken line reported to be relatively resistant to coinfection with infectious bronchitis virus and APEC infection (45), and injected a total of 51 birds with one of three different doses of APEC O1 or with PBS as a control, respectively. Six infected birds and three of the control group were euthanized at 14 h (hpi), 3, and 7 days post infection (dpi) and spleen samples were collected. **Figure 7** shows, that PTX3 expression undergoes a dose-dependent up-regulation at 14 hpi in these chickens. Challenge with the low dose non-significantly amplifies PTX3 expression 9-fold, while significant up-regulation is observed after intermediate dose (46-fold) and high dose (154-fold) APEC O1 challenge. As **Figure 8** shows, PTX3 expression correlates significantly with bacterial load numbers in the spleen. In agreement with the low numbers of viable bacteria recovered from the spleen at 3 and 7 dpi (data not shown) there is no significant difference in PTX3 expression between control and infected birds at these time points, which underlines the importance of chPTX3 as a marker for the acute phase of infection.

DISCUSSION

The role of PTX3 in the innate immune system, where it acts as a pattern recognition molecule and potent complement activator, and the rapid change of its expression in the course of the acute phase of infections have been studied intensely in mice and men (2, 32, 46, 47). However, the expression, structure and function of chicken PTX3 has previously been neglected. Our recent microarray studies connected PTX3 to the acute phase reaction in chickens for the first time (38). However, its annotation in the chicken genome remained to be verified.

To address this question, we first examined the protein encoded by the gene annotated as chPTX3 to assess the sequence similarity to PTX3 of other vertebrates. With identical amino acids representing 36 to 53% of the sequences and an overall similarity of up to 77% with minor species-specific variations, the chPTX3 sequence proved to be highly similar to other PTX3 sequences. The pentraxin signature sequence is an eight amino acid motif within the C-terminal so-called pentraxin domain and is present in all members of the pentraxin family (32). It is also conserved in chickens. Interestingly, mammalian PTX3 sequences are more similar to chicken PTX3 than are those of lower vertebrates like *Xenopus*

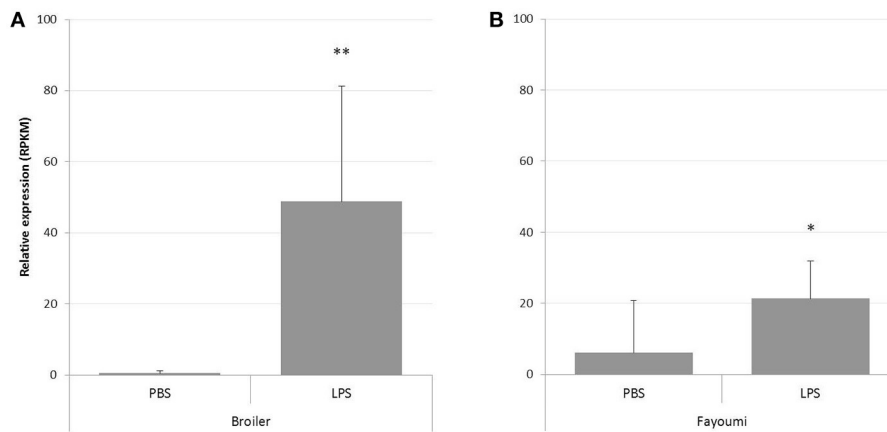


FIGURE 5 | Analysis of RNA-seq data from study PRJNA340891 for PTX3 expression in spleens of LPS-treated chickens. RNA-seq data was downloaded from the Short Read Archive (SRA) database for a total of 32 samples and blasted for PTX3 reads. Relative expression of PTX3 was assessed for each sample. Data shown represent the mean value of the respective group; error bars indicate standard deviation from the mean. PTX3 expression changes in response to a 3.5 h mock (PBS) or LPS treatment in Broiler **(A)** and Fayoumi chickens **(B)**. LPS enhances PTX3 expression in spleens of Broiler chickens to 95-fold and to 3.5-fold in Fayoumi chickens. * $p \leq 0.05$, ** $p \leq 0.01$. $N = 8$.

TABLE 2 | Fifteen most strongly up-regulated genes in chicken spleens in response to LPS treatment as determined by RNA-seq analysis.

No.	Gene name	Gene description	Ensembl gene ID	Fold change
1	IL4I1	Interleukin 4 induced 1	ENSGALG00000000081	227
2	AVD	Avidin	ENSGALG00000023622	125
3	PTX3	Pentraxin 3, long	ENSGALG00000028284	108
4	ATF3	Activating transcription factor 3	ENSGALG00000025887	86
5	TNFRSF6B	Tumor necrosis factor receptor superfamily, member 6b	ENSGALG00000006106	79
6	ANGPTL4	Angiopoietin like 4	ENSGALG00000000619	71
7	ARSI	Arylsulfatase family, member 1	ENSGALG00000005616	65
8	ST6GALNAC2	ST6 (alpha-N-acetyl-neuraminyl-2,3-beta-galactosyl-1,3)-N-acetylgalactosaminide alpha-2,6-sialyltransferase 2	ENSGALG00000001883	60
9	LHX1	LIM homeobox 1	ENSGALG00000005409	56
10	CA9	Carbonic anhydrase IX	ENSGALG00000021340	54
11	SLCO4C1	Solute carrier organic anion transporter family member 4C1	ENSGALG00000026768	32
12	GCH1	GTP cyclohydrolase 1	ENSGALG000000012200	23
13	IL13RA2	Interleukin 13 receptor, alpha 2	ENSGALG00000020316	19
14	GVIN1	GTPase, very large interferon inducible 1	ENSGALG00000016556	18
15	OASL	2'-5'-Oligoadenylate synthetase-like	ENSGALG00000013723	18

Shading indicates genes associated with GO term "response to stimulus"(GO:0050896).

tropicalis and *Danio rerio*. Closer examination of the sequences nonetheless shows that there are some distinct features between mammals and non-mammalian species examined here. One notable difference is the deletion of significant parts of the sequence in the course of mammalian evolution. These might influence the quaternary structure and thereby the function of chPTX3.

Human PTX3 has previously been shown to form asymmetric, cyclic octamers (48) and cysteine residues are of major importance to the formation of their critical intra- and interchain disulfide bonds (43). By aligning PTX3 amino acid sequences of

human, mouse, cow, pig, chicken, frog, and zebra fish, we found that most of the cysteine residues, which are in humans and mice contributing to the formation of the polymeric structure of PTX3 (43, 48), are conserved in chickens. Contrarily, one of them, C103 in human PTX3, is not. C103 has been shown to confer the organization of PTX3 protomers into either dimers or tetramers, which then form the final octamer (48). Western blot analysis of recombinant chPTX3 reveals a polymeric structure with a prominent MW drop to ~65 kDa after disulfide bond reduction and thereby proves its polymeric structure. The polymer's exact MW and thereby its structural organization, however, remains

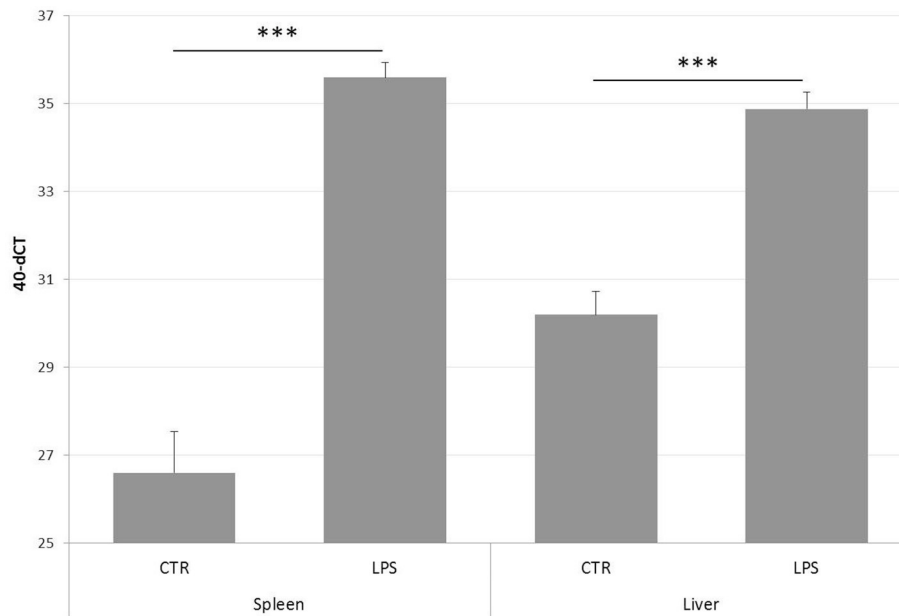


FIGURE 6 | PTX3 expression in chicken spleen and liver after LPS treatment, as determined by qRT-PCR. Splens and livers of a total of 12 chickens, of which 6 had received LPS intravenously 3 h before scarification, were subjected to RNA extraction. cDNA samples were analyzed using qRT-PCR. Data shown represent the mean value of the respective group; error bars indicate standard deviation from the mean. Mean 40-dCT in control (CTR) spleens is 26.6, and 35.6 in spleens of LPS-treated chickens (LPS). CTR livers display a 40-dCT of 30.2, LPS livers of 34.9. These numbers convert to an expression fold change of 508 for spleens and 26 for livers. The induction of chPTX3 in the LPS group is highly significant ($***p \leq 0.005$) for both tissues. $N = 6$.

to be determined. These findings indicate a major divergence in quaternary structure between mammalian and chicken PTX3.

Protein glycosylation was shown to be of significant functional relevance in human PTX3. The terminal glycan of the PTX3 N-glycosylation site at N220 is sialic acid. This molecule is one of the main effectors of the binding characteristics of PTX3 to pathogens and mediators of immunological functions (46, 49). The sialic acid residue of N220 obscures ligand binding sites on the protein surface of human PTX3, represented by residues K214, E252, K255, and R332. Preventing excessive C1q binding, PTX3 sialylation thus mediates down-regulation of complement activation (46). The complement system is activated in a highly potent manner only by deglycosylated PTX3 (49). In addition, leukocyte trans-endothelial migration is inhibited through occupation of P-selectin, which is essential for the mediation of leukocyte rolling, by sialic acid residues on the surface of human PTX3 (50). In contrast to its immune-enhancing role, deglycosylation of PTX3 during influenza infection abolishes its anti-viral activity. Only an intact sialic acid residue on PTX3 is able to mimic hemagglutinin binding sites on host cells and by that means act as a decoy receptor for the virus (51). PTX3 deglycosylation in this case hence exacerbates infection (35). The same mechanism probably applies to the defense against other viruses with similar infection strategies (52). Our analysis of PTX3 protein sequences revealed that the number of N-glycosylation sites differs widely between species. Like human PTX3, the mouse and bovine proteins also have one predicted N-glycosylated asparagine residue (N-X-S/T, where X

can be any amino acid except for P). In addition, two of the four amino acids interacting with the sialic acid residue at N220 in humans are conserved in each of these species. In contrast, pig PTX3 does not have any predicted N-glycosylation sites, which may potentially contribute to their high susceptibility to a variety of influenza virus infections (53). Most interestingly, prediction of N-glycosylation sites for the three non-mammalian species examined here resulted in two hits each, of which one is located within the N-terminal and the C-terminal domain, respectively. Here we prove the presence of at least one N-glycosylation site in chPTX3 by a MW drop of deglycosylated compared to untreated recombinant chPTX3. Due to the fact that the composition of glycan substitutions is very variable, not only between species but also in a tissue-specific manner (49), further analysis of these structures will be necessary to assess whether only one or both of the predicted N-glycosylation sites are indeed glycosylated in chickens and if tissue-specific glycosylation might alter the protein function in this species.

It has been published earlier that most APPs are mainly synthesized and released by hepatocytes (54), but newer studies indicate a more variable origin (55). In consensus with that, mammalian PTX3 is expressed in a variety of cells under inflammatory conditions and has been shown to be constitutively expressed first and foremost in lymphatic endothelial cells (56). We therefore next investigated the chPTX3 expression pattern under non-inflammatory and inflammatory conditions. We first searched public RNA-seq databases for studies on chicken tissues and chose one especially comprehensive study. Interestingly,

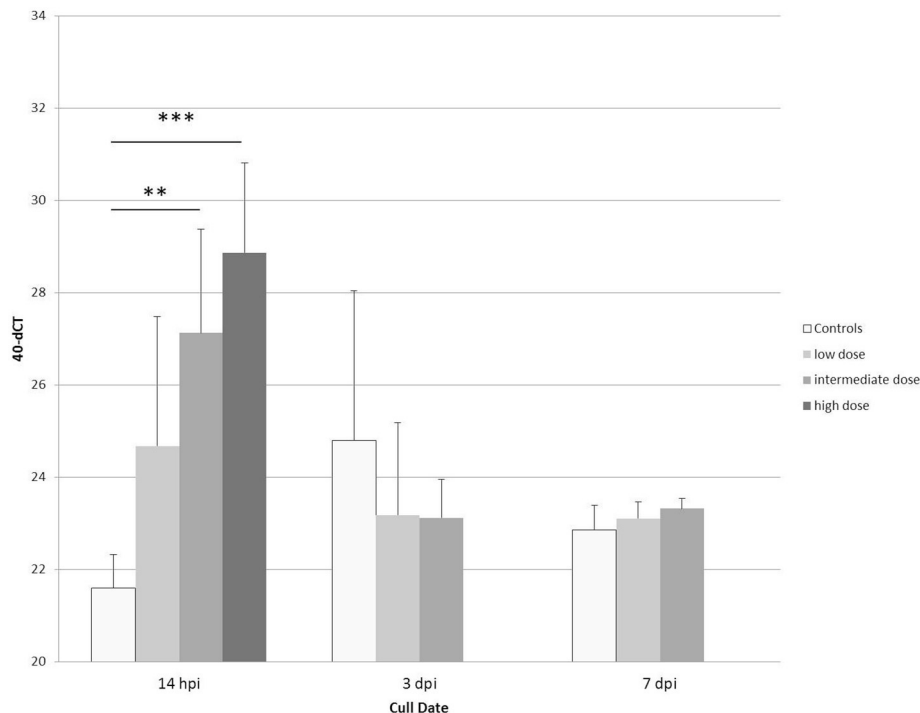


FIGURE 7 | Expression changes of PTX3 in spleens of line 7₂ chickens at 14 hpi, 3 dpi, and 7 dpi with low, intermediate or high doses of APEC O1, or mock injection, determined by qRT-PCR. Mean 40-dCT values for controls (white bars) and low (7.3×10^4 CFU; light gray bars), intermediate (1.1×10^6 CFU; medium gray bars), and high (8.8×10^6 CFU; dark gray bars) doses were 21.6, 24.7, 27.1, and 28.9, respectively, at 14 hpi. These numbers depict a non-significant expression fold change of 9 between control and low, a very significant fold change of 46 for intermediate (** $p \leq 0.01$), and a highly significant fold change of 154 for high dose APEC O1 (** $p \leq 0.005$). Expression changes for APEC-infected birds relative to controls at 3 dpi and 7 dpi were not significant. ChPTX3 expression changes in a dose-dependent manner at 14 h post infection. Data shown represent the mean value of the respective group; error bars indicate standard deviation from the mean. $N = 3$ PBS controls, $N = 6$ APEC O1 low and intermediate dose inoculated birds, $N = 5$ APEC O1 high dose inoculated birds.

most analyzed chicken tissues constitutively expressed PTX3. Exceptions were muscular organs (breast muscle, proventriculus, and heart muscle), ovary and spleen. In contrast, skin and kidney showed the most prominent constitutive expression. PTX3 expression has previously been shown to be constitutive in human kidney, as well (57), whereas skin samples have, to the best of our knowledge, not been analyzed for constitutive PTX3 expression in mammals so far. Interestingly, Doni and coworkers recently reported a strong association of PTX3 with the process of wound healing in mice (47). As the skin forms the outer body barrier (58) and the kidney is one of the main detoxification organs (59), these tissues can *in vivo* probably hardly ever be considered “unstimulated” and their strong expression of an inflammation-responsive molecule is no surprise.

Highly surprising, on the other hand, was the finding that the main lymphoid organ of birds (who lack lymph nodes), the spleen, did not considerably express chPTX3 in any of the eight sampled individuals. This finding in chickens is contrary to mammals, where lymphatic endothelia show a prominent constitutive expression of PTX3 (56). The lack of constitutive PTX3 expression in this immunologically highly relevant tissue points to active regulatory mechanisms. As recently shown in human primary cells and cell lines, PTX3 expression is

regulated by three upstream regulatory elements, of which one is also highly conserved in chickens. It was shown furthermore, that in colorectal cancer cells, PTX3 is silenced by epigenetic modifications within these regions, that are, among other factors, induced by a high activity of STAT3 in these cells (60). STAT3 or another regulator of immune functions might be responsible for depression of PTX3 in unstimulated chicken spleens to prevent overstimulation of the immune system. Complete elucidation of the non-redundant immunological functions of the avian spleen, however, remains yet to be achieved and might help to explain PTX3 regulation. Other major lymphoid organs in chickens, including the Harderian gland, thymus, bursa of Fabricius and the caecal tonsil, did constitutively express PTX3. This is consistent with the findings in mammalian lymphatic endothelia (56). To verify the RNA-seq data for lymphoid tissues, we performed an RT-PCR analysis of chicken samples from our facility and were able to confirm the RNA-seq results by demonstrating the absence of constitutive chPTX3 expression in spleen, but strong signals in the other four lymphoid tissue samples.

As a next step, we aimed to characterize PTX3 expression changes in response to inflammation. We analyzed RNA-seq data from various studies addressing the acute phase response in

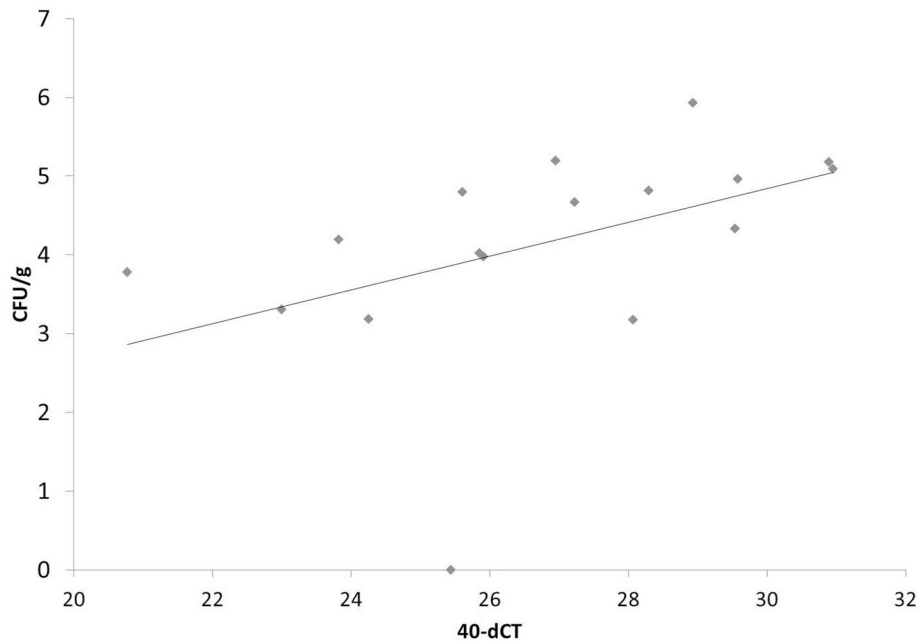


FIGURE 8 | Correlation of PTX3 expression and number of viable bacteria in chicken spleens at 14 hpi after low, intermediate and high dose APEC O1 infection. PTX3 expression correlates significantly ($p = 0.0313$) with the amount of viable bacteria inoculated in the tissue. $N = 17$. CFU/g, colony forming units per gram of splenic tissue.

chickens and thereby detected a PTX3 up-regulation in a number of highly relevant viral and bacterial diseases, including IBDV, APEC, and GaHV2, the pathogen inducing Marek's Disease.

Analysis of the dataset drawn from an experimental infection with 10^8 CFU APEC O1 (61) resulted in a PTX3 expression increase of only 4-fold between controls and diseased birds, occurring at 5 dpi. On the other hand, LPS induced a 96-fold and a 3.5-fold expression change for Broiler and Fayoumi chickens, respectively, in another study of which we examined the RNA-seq data (44). This prominent difference in PTX3 induction demanded further investigation of the overall chicken acute phase reaction. Our next approach hence was to perform an RNA-seq analysis on spleen samples taken from White Leghorn Layer chickens from our facility, which had been LPS- or mock-treated for 3 h. As would have been expected after LPS-treatment, the majority of the most strongly up-regulated genes cluster to the GO term "response to stimulus." Supporting our thesis that PTX3 is an important acute phase protein in chickens, the PTX3 gene was up-regulated 108-fold in LPS-treated chickens and showed up on position 3 of the most highly up-regulated genes. Narrowing the list down to only those genes associated with "response to stimulus," it even was the most strongly regulated gene. A subsequent qPCR analysis of spleen and liver samples of six LPS- and mock-treated chickens verified the results obtained by NGS. The 15 most strongly down-regulated genes, in contrast, do not clearly cluster to any immune response-associated GO term in particular, but are mostly linked to processes concerned with tissue homeostasis (data not shown). The down-regulation seen here is exemplary

for the fact, that under inflammatory conditions, tissue and endothelial integrity are impaired (62, 63). Interestingly, none of the genes encoding proteins that are considered classical APPs in mammals, e.g., CRP and SAP, show up in this analysis even though they have repeatedly been described in birds (19, 64). Nor did we detect any known chicken APPs, like SAA, ceruloplasmin, ovotransferrin or α 1-acid glycoprotein, to be differentially regulated in this experiment. These data prove the induction of PTX3 in genetically diverse chickens such as White Leghorn layers, Broilers, and Fayoumi chickens and indicate, that PTX3 might play an important role as a major APP in chickens.

The next step after proving that chicken PTX3 is inducible by an inflammation-inducing but non-infectious agonist *in vivo* was to perform a comprehensive kinetic study using the White Leghorn inbred line 7₂, which has been shown to be relatively resistant to coinfection with infectious bronchitis virus and APEC (45). We thereby aimed to assess if PTX3 is an appropriate marker of subclinical disease and whether its expression would correlate with the severity of infection. We compared PTX3 expression changes in spleens triggered by three different doses of APEC O1 at three early time points, 14 hpi, 3 dpi and 7 dpi. It is shown here that all infected chickens significantly amplify their PTX3 expression, but only at 14 hpi. The PTX3 expression increases in a challenge dose-dependent manner. Expression fold changes are 9, 46, and 154 for low, intermediate and high dose APEC O1-treatment, respectively. The changes in intermediate and high dose expression, as compared to controls, are of high significance. PTX3 expression in splenic

tissue correlates significantly with the bacterial burden in the same tissue samples, which makes PTX3 a valuable indicator of infection severity. Interestingly, PTX3 levels do not differ between controls and infected chickens at the later time points, when bacterial burdens are decreasing toward zero again. The differential PTX3 expression between challenge doses and its correlation with the number of viable bacteria in the respective samples establish chPTX3 as a potential tool for the diagnosis of inflammatory disease and represent indicators of even subclinical pathologic conditions.

In conclusion, the study presented here shows that PTX3 is of major interest concerning the chicken acute phase reaction. We showed that the chPTX3 protein, regardless of a high overall sequence similarity, differs from the well-described mammalian PTX3 by structural aspects, which are very likely to convey differential functional characteristics. Furthermore, we succeeded in expressing recombinant chPTX3, which enables us to generate specific monoclonal antibodies. Detection of the PTX3 protein in serum and other biological samples will thereby be rendered possible. The results presented here build a solid base for further studies on chPTX3 ligands, binding properties, and association to immunological pathways in the future. We furthermore prove here that PTX3 is expressed in a large variety of chicken tissues and that the chicken's main lymphoid organ, the spleen, does not, like the other lymphoid tissues in chickens and mammals, constitutively express PTX3, but rigorously responds to inflammatory stimulation. Inflammation, however, induces a stimulus- and infection dose-dependent PTX3 response in spleen and other tissues on mRNA level. Based upon the first insights on chPTX3 presented here, further studies may provide evidence for its eligibility as a general marker for the acute phase of inflammation and thereby support diagnostics and disease control for a progressive poultry industry.

DATA AVAILABILITY STATEMENT

NGS data generated for this study can be found in ArrayExpress, hosted by the European Bioinformatics Institute (<https://www.ebi.ac.uk/arrayexpress/>) under accession number E-MTAB-7082.

ETHICS STATEMENT

The first animal experiment in this study (LPS injection; Germany) was carried out in accordance with the recommendations of the TierSchVersV, adopted by

the Bundesministerium für Ernährung, Landwirtschaft und Verbraucherschutz. The protocol was approved by the government of Upper Bavaria, license number 55.2-1-54-2531-121-09.

The second animal experiment (APEC infection; UK) was carried out in accordance with the recommendations of the requirements of the Animals (Scientific Procedures) Act 1986 by the UK Home Office Establishment. The protocol was approved by The Moredun Institute Ethical Review Committee under PPL 60/4420.

AUTHOR CONTRIBUTIONS

NB, SR, AS, SH, TC, AA, LV, and BS performed experiments. NB carried out RNA-seq data analyses. SR and SH performed NGS data acquisition and analysis. DE supervised bioinformatics analyses. BK and MS planned the study and analyzed data. NB, AA, and BK wrote the manuscript. All authors contributed to, read and approved the final manuscript.

FUNDING

The study was supported by the Animal Health and Welfare Initiative, project ANIHW-MICHIC, PTBLE2814ERA01D to BK and by the Biotechnology and Biological Sciences Research Council (BBSRC) as part of the joint NIFA-BBSRC Animal Health and Disease program under grant BB/M028208/1 and USDA-NIFA AFRI under grant 2015-67015-23093 to Professor Pete Kaiser (PK), MS and LV, and BBSRC funding via the ERA-NET Animal Health and Welfare (ANIHW-MICHIC) initiative under grant BB/M028305/1 to PK, MS and LV. The funders had no role in study design, data collection and analysis, decision to publish, or preparation of the manuscript.

ACKNOWLEDGMENTS

We thank Helmut Blum from LMU Gene Centre, Munich, for help with Illumina and Galaxy platforms.

SUPPLEMENTARY MATERIAL

The Supplementary Material for this article can be found online at: <https://www.frontiersin.org/articles/10.3389/fimmu.2019.00124/full#supplementary-material>

REFERENCES

- Herrero M, Havlik P, Valin H, Notenbaert A, Rufino MC, Thornton PK, et al. Biomass use, production, feed efficiencies, and greenhouse gas emissions from global livestock systems. *Proc Natl Acad Sci USA*. (2013) 110:20888–93. doi: 10.1073/pnas.1308149110
- Jaillon S, Bonavita E, Gentile S, Rubino M, Laface J, Garlanda C, et al. The long pentraxin PTX3 as a key component of humoral innate immunity and a candidate diagnostic for inflammatory diseases. *Int Arch Allergy Immunol*. (2014) 165:165–78. doi: 10.1159/000368778
- Dowton SB, Colten HR. Acute phase reactants in inflammation and infection. *Semin Hematol*. (1988) 25:84–90.
- Gabay C, Kushner I. Acute-phase proteins and other systemic responses to inflammation. *N Engl J Med*. (1999) 340:448–54. doi: 10.1056/NEJM199902113400607
- O'Reilly EL, Eckersall PD. Acute phase proteins: a review of their function, behaviour and measurement in chickens. *Worlds Poult Sci J*. (2014) 70:27–44. doi: 10.1017/S0043933914000038
- Ma R, Xu H, Wu J, Sharma A, Bai S, Dun B, et al. Identification of serum proteins and multivariate models for diagnosis and therapeutic monitoring

- of lung cancer. *Oncotarget* (2017) 8:18901–13. doi: 10.18632/oncotarget.14782
7. Liu S, Qu X, Liu F, Wang C. Pentraxin 3 as a prognostic biomarker in patients with systemic inflammation or infection. *Mediators Inflamm.* (2014) 2014:421429. doi: 10.1155/2014/421429
 8. Arellano-Orden E, Calero-Acuna C, Cordero JA, Abad-Arranz M, Sanchez-Lopez V, Marquez-Martin E, et al. Specific networks of plasma acute phase reactants are associated with the severity of chronic obstructive pulmonary disease: a case-control study. *Int J Med Sci.* (2017) 14:67–74. doi: 10.7150/ijms.16907
 9. Javard R, Grimes C, Bau-Gaudreault L, Dunn M. Acute-phase proteins and iron status in cats with chronic kidney disease. *J Vet Intern Med.* (2017) 31:457–64. doi: 10.1111/jvim.14661
 10. Guardino CM, Dunkel Schetter C, Hobel CJ, Gaines Lanzi R, Schafer P, Thorp JM, et al. Chronic stress and C-reactive protein in mothers during the first postpartum year. *Psychosom Med.* (2016) 79:450–60. doi: 10.1097/PSY.0000000000000424
 11. Tillett WS, Francis T. Serological reactions in pneumonia with a non-protein somatic fraction of pneumococcus. *J Exp Med.* (1930) 52:561–71. doi: 10.1084/jem.52.4.561
 12. Pepys MB, Hirschfield GM. C-reactive protein: a critical update. *J Clin Invest.* (2003) 111:1805–12. doi: 10.1172/JCI200318921
 13. Sylte MJ, Suarez DL. Vaccination and acute phase mediator production in chickens challenged with low pathogenic avian influenza virus; novel markers for vaccine efficacy? *Vaccine* (2012) 30:3097–105. doi: 10.1016/j.vaccine.2012.02.055
 14. Zulkifli I, Najafi P, Nurfarahin AJ, Soleimani AF, Kumari S, Aryani AA, et al. Acute phase proteins, interleukin 6, and heat shock protein 70 in broiler chickens administered with corticosterone. *Poult Sci.* (2014) 93:3112–8. doi: 10.3382/ps.2014-04099
 15. Koppenol A, Everaert N, Buyse J, Delezie E. Challenge with lipopolysaccharides or Freund's adjuvant? What is the best option to trigger acute phase protein production in broilers? *Res Vet Sci.* (2015) 99:96–8. doi: 10.1016/j.rvsc.2015.01.013
 16. Eid C, Hemadi M, Ha-Duong NT, El Hage Chahine JM. Iron uptake and transfer from ceruloplasmin to transferrin. *Biochim Biophys Acta* (2014) 1840:1771–81. doi: 10.1016/j.bbagen.2014.01.011
 17. Kumar S, Sharma D, Kumar R, Kumar R. Electrostatic effects control the stability and iron release kinetics of ovotransferrin. *J Biol Inorg Chem.* (2014) 19:1009–24. doi: 10.1007/s00775-014-1145-2
 18. Urien S, Bree F, Testa B, Tillement JP. pH-dependency of basic ligand binding to alpha 1-acid glycoprotein (orosomucoid). *Biochem J.* (1991) 280 (Pt 1):277–80.
 19. Dalgaard TS, Skovgaard K, Norup LR, Pleidrup J, Permin A, Schou TW, et al. Immune gene expression in the spleen of chickens experimentally infected with *Ascaridia galli*. *Vet Immunol Immunopathol.* (2015) 164:79–86. doi: 10.1016/j.vetimm.2015.01.003
 20. Kjaerup RM, Dalgaard TS, Norup LR, Hamzic E, Sorensen P, Juul-Madsen HR. Characterization of cellular and humoral immune responses after IBV infection in chicken lines differing in MBL serum concentration. *Viral Immunol.* (2014) 27:529–42. doi: 10.1089/vim.2014.0088
 21. Norup LR, Dalgaard TS, Friggens NC, Sorensen P, Juul-Madsen HR. Influence of chicken serum mannose-binding lectin levels on the immune response towards *Escherichia coli*. *Poult Sci.* (2009) 88:543–53. doi: 10.3382/ps.2008-00431
 22. Millet S, Bennett J, Lee KA, Hau M, Klasing KC. Quantifying and comparing constitutive immunity across avian species. *Dev Comp Immunol.* (2007) 31:188–201. doi: 10.1016/j.dci.2006.05.013
 23. Laursen SB, Nielsen OL. Mannan-binding lectin (MBL) in chickens: molecular and functional aspects. *Dev Comp Immunol.* (2000) 24:85–101. doi: 10.1016/S0145-305X(99)00066-X
 24. de Seny D, Cobraiville G, Charlier E, Neuville S, Esser N, Malaise D, et al. Acute-phase serum amyloid a in osteoarthritis: regulatory mechanism and proinflammatory properties. *PLoS ONE* (2013) 8:e66769. doi: 10.1371/journal.pone.0066769
 25. Landman WJ, Sletten K, Koch CA, Tooten PC, Gruys E. Chicken joint amyloid protein is of the AA-type. I Characterization of the amyloid protein. *Scand J Immunol.* (1996) 43:210–8. doi: 10.1046/j.1365-3083.1996.d011-31.x
 26. Upragarin N, Landman WJ, Gaastra W, Gruys E. Extrahepatic production of acute phase serum amyloid A. *Histol Histopathol.* (2005) 20:1295–307. doi: 10.14670/HH-20.1295
 27. Nazifi S, Dadras H, Hoseinian SA, Ansari-Lari M, Masoudian M. Measuring acute phase proteins (haptoglobin, ceruloplasmin, serum amyloid A, and fibrinogen) in healthy and infectious bursal disease virus-infected chicks. *Comp Clin Pathol.* (2010) 19:283–6. doi: 10.1007/s00580-009-0858-z
 28. Nazifi S, Tabandeh MR, Hosseini SA, Ansari-Lari M, Safari H. Evaluation of sialic acid and acute-phase proteins (haptoglobin and serum amyloids A) in healthy and avian infection bronchitis virus-infected chicks. *Comp Clin Pathol.* (2011) 20:69–73. doi: 10.1007/s00580-009-0939-z
 29. Muhammad IF, Borne Y, Hedblad B, Nilsson PM, Persson M, Engstrom G. Acute-phase proteins and incidence of diabetes: a population-based cohort study. *Acta Diabetol.* (2016) 53:981–9. doi: 10.1007/s00592-016-0903-8
 30. Muhammad IF, Borne Y, Ostling G, Kennback C, Gottsater M, Persson M, et al. Acute phase proteins as prospective risk markers for arterial stiffness: the malmo diet and cancer cohort. *PLoS ONE* (2017) 12:e0181718. doi: 10.1371/journal.pone.0181718
 31. Rajamanickam A, Munisankar S, Bhootra Y, Dolla C, Nutman TB, Babu S. Microbial translocation associated with an acute-phase response and elevations in MMP-1, HO-1, and proinflammatory cytokines in *Strongyloides stercoralis* infection. *Infect Immun.* (2017) 85:e00772-16. doi: 10.1128/IAI.00772-16
 32. Daigo K, Mantovani A, Bottazzi B. The yin-yang of long pentraxin PTX3 in inflammation and immunity. *Immunol Lett.* (2014) 161:38–43. doi: 10.1016/j.imlet.2014.04.012
 33. Inforzato A, Riviaccio V, Morreale AP, Bastone A, Salustri A, Scarchilli L, et al. Structural characterization of PTX3 disulfide bond network and its multimeric status in cumulus matrix organization. *J Biol Chem.* (2008) 283:10147–61. doi: 10.1074/jbc.M708535200
 34. Jaillon S, Moalli F, Ragnarsdottir B, Bonavita E, Puthia M, Riva F, et al. The humoral pattern recognition molecule PTX3 is a key component of innate immunity against urinary tract infection. *Immunity* (2014) 40:621–32. doi: 10.1016/j.immuni.2014.02.015
 35. Reading PC, Bozza S, Gilbertson B, Tate M, Moretti S, Job ER, et al. Antiviral activity of the long chain pentraxin PTX3 against influenza viruses. *J Immunol.* (2008) 180:3391–8. doi: 10.4049/jimmunol.180.5.3391
 36. Garlanda C, Hirsch E, Bozza S, Salustri A, De Acetis M, Nota R, et al. Non-redundant role of the long pentraxin PTX3 in anti-fungal innate immune response. *Nature* (2002) 420:182–6. doi: 10.1038/nature01195
 37. Huang XL, Zhang L, Duan Y, Wang YJ, Wang J. Association of pentraxin 3 with autoimmune diseases: a systematic review and meta-analysis. *Arch Med Res.* (2016) 47:223–31. doi: 10.1016/j.arcmed.2016.05.006
 38. Röell S, Häertle S, Lütteke T, Kaspers B, Häertle S. Tissue and time specific expression pattern of interferon regulated genes in the chicken. *BMC Genomics* (2017) 18:264. doi: 10.1186/s12864-017-3641-6
 39. Burnette WN. "Western blotting": electrophoretic transfer of proteins from sodium dodecyl sulfate-polyacrylamide gels to unmodified nitrocellulose and radiographic detection with antibody and radioiodinated protein A. *Anal Biochem.* (1981) 112:195–203. doi: 10.1016/0003-2697(81)90281-5
 40. Johnson TJ, Kariyawasam S, Wannemuehler Y, Mangiamale P, Johnson SJ, Doetkott C, et al. The genome sequence of avian pathogenic *Escherichia coli* strain O1:K1:H7 shares strong similarities with human extraintestinal pathogenic *E. coli* genomes. *J Bacteriol.* (2007) 189:3228–36. doi: 10.1128/JB.01726-06
 41. Gatzmann F, Metzler D, Krebs S, Blum H, Sing A, Takano A, et al. NGS population genetics analyses reveal divergent evolution of a Lyme Borreliosis agent in Europe and Asia. *Ticks Tick Borne Dis.* (2015) 6:344–51. doi: 10.1016/j.ttbdis.2015.02.008
 42. Borowska D, Rothwell L, Bailey RA, Watson K, Kaiser P. Identification of stable reference genes for quantitative PCR in cells derived from chicken lymphoid organs. *Vet Immunol Immunopathol.* (2016) 170:20–4. doi: 10.1016/j.vetimm.2016.01.001
 43. Bottazzi B, Vouret-Craviari V, Bastone A, De Gioia L, Matteucci C, Peri G, et al. Multimer formation and ligand recognition by the long pentraxin PTX3. Similarities and differences with the short pentraxins C-reactive protein and serum amyloid P component. *J Biol Chem.* (1997) 272:32817–23. doi: 10.1074/jbc.272.52.32817

44. Van Goor A, Ashwell CM, Persia ME, Rothschild MF, Schmidt CJ, Lamont SJ. Unique genetic responses revealed in RNA-seq of the spleen of chickens stimulated with lipopolysaccharide and short-term heat. *PLoS ONE* (2017) 12:e0171414. doi: 10.1371/journal.pone.0171414
45. Bumstead N, Huggins MB, Cook JK. Genetic differences in susceptibility to a mixture of avian infectious bronchitis virus and *Escherichia coli*. *Br Poult Sci.* (1989) 30:39–48. doi: 10.1080/00071668908417123
46. Inforzato A, Peri G, Doni A, Garlanda C, Mantovani A, Bastone A, et al. Structure and function of the long pentraxin PTX3 glycosidic moiety: fine-tuning of the interaction with C1q and complement activation. *Biochemistry* (2006) 45:11540–51. doi: 10.1021/bi0607453
47. Doni A, Garlanda C, Mantovani A. PTX3 orchestrates tissue repair. *Oncotarget* (2015) 6:30435–6. doi: 10.18632/oncotarget.5453
48. Inforzato A, Baldock C, Jowitt TA, Holmes DF, Lindstedt R, Marcellini M, et al. The angiogenic inhibitor long pentraxin PTX3 forms an asymmetric octamer with two binding sites for FGF2. *J Biol Chem.* (2010) 285:17681–92. doi: 10.1074/jbc.M109.085639
49. Inforzato A, Reading PC, Barbati E, Bottazzi B, Garlanda C, Mantovani A. The “sweet” side of a long pentraxin: how glycosylation affects PTX3 functions in innate immunity and inflammation. *Front Immunol.* (2012) 3:407. doi: 10.3389/fimmu.2012.00407
50. Deban L, Russo RC, Sironi M, Moalli F, Scanziani M, Zambelli V, et al. Regulation of leukocyte recruitment by the long pentraxin PTX3. *Nat Immunol.* (2010) 11:328–34. doi: 10.1038/ni.1854
51. Wilks S, de Graaf M, Smith DJ, Burke DF. A review of influenza haemagglutinin receptor binding as it relates to pandemic properties. *Vaccine* (2012) 30:4369–76. doi: 10.1016/j.vaccine.2012.02.076
52. Neu U, Bauer J, Stehle T. Viruses and sialic acids: rules of engagement. *Curr Opin Struct Biol.* (2011) 21:610–8. doi: 10.1016/j.sbi.2011.08.009
53. Urbaniak K, Markowska-Daniel I, Kowalczyk A, Kwit K, Pomorska-Mol M, Fracek B, et al. Reassortment process after co-infection of pigs with avian H1N1 and swine H3N2 influenza viruses. *BMC Vet Res.* (2017) 13:215. doi: 10.1186/s12917-017-1137-x
54. Jain S, Gautam V, Naseem S. Acute-phase proteins: as diagnostic tool. *J Pharm Bioallied Sci.* (2011) 3:118–27. doi: 10.4103/0975-7406.76489
55. Chapwanya A, Meade KG, Doherty ML, Callanan JJ, O’Farrelly C. Endometrial epithelial cells are potent producers of tracheal antimicrobial peptide and serum amyloid A3 gene expression in response to *E. coli* stimulation. *Vet Immunol Immunopathol.* (2013) 151:157–62. doi: 10.1016/j.vetimm.2012.09.042
56. Inforzato A, Jaillon S, Moalli F, Barbati E, Bonavita E, Bottazzi B, et al. The long pentraxin PTX3 at the crossroads between innate immunity and tissue remodelling. *Tissue Antigens* (2011) 77:271–82. doi: 10.1111/j.1399-0039.2011.01645.x
57. Nauta AJ, de Haij S, Bottazzi B, Mantovani A, Borrias MC, Aten J, et al. Human renal epithelial cells produce the long pentraxin PTX3. *Kidney Int.* (2005) 67:543–53. doi: 10.1111/j.1523-1755.2005.67111.x
58. Hanel KH, Cornelissen C, Luscher B, Baron JM. Cytokines and the skin barrier. *Int J Mol Sci.* (2013) 14:6720–45. doi: 10.3390/ijms14046720
59. Martovetsky G, Tee JB, Nigam SK. Hepatocyte nuclear factors 4alpha and 1alpha regulate kidney developmental expression of drug-metabolizing enzymes and drug transporters. *Mol Pharmacol.* (2013) 84:808–23. doi: 10.1124/mol.113.088229
60. Rubino M, Kunderfranco P, Basso G, Greco CM, Pasqualini F, Serio S, et al. Epigenetic regulation of the extrinsic oncosuppressor PTX3 gene in inflammation and cancer. *Oncoimmunology* (2017) 6:e1333215. doi: 10.1080/2162402X.2017.1333215
61. Sun H, Liu P, Nolan LK, Lamont SJ. Novel pathways revealed in bursa of fabricius transcriptome in response to extraintestinal pathogenic *Escherichia coli* (ExPEC) infection. *PLoS ONE* (2015) 10:e0142570. doi: 10.1371/journal.pone.0142570
62. Nissinen L, Kahari VM. Matrix metalloproteinases in inflammation. *Biochim Biophys Acta* (2014) 1840:2571–80. doi: 10.1016/j.bbagen.2014.03.007
63. Steelant B, Farre R, Wawrzyniak P, Belmans J, Dekimpe E, Vanheel H, et al. Impaired barrier function in patients with house dust mite-induced allergic rhinitis is accompanied by decreased occludin and zonula occludens-1 expression. *J Allergy Clin Immunol.* (2016) 137:1043–53.e5. doi: 10.1016/j.jaci.2015.10.050
64. Marques AT, Lecchi C, Grilli G, Giudice C, Nodari SR, Vinco LJ, et al. The effect of transport stress on turkey (*Meleagris gallopavo*) liver acute phase proteins gene expression. *Res Vet Sci.* (2016) 104:92–5. doi: 10.1016/j.rvsc.2015.11.014

Conflict of Interest Statement: The authors declare that the research was conducted in the absence of any commercial or financial relationships that could be construed as a potential conflict of interest.

Copyright © 2019 Burkhardt, Röhl, Staudt, Elleder, Härtle, Costa, Alber, Stevens, Vervelde, Schusser and Kaspers. This is an open-access article distributed under the terms of the Creative Commons Attribution License (CC BY). The use, distribution or reproduction in other forums is permitted, provided the original author(s) and the copyright owner(s) are credited and that the original publication in this journal is cited, in accordance with accepted academic practice. No use, distribution or reproduction is permitted which does not comply with these terms.