



THE UNIVERSITY *of* EDINBURGH

Edinburgh Research Explorer

A controlled comparison of thickness, volume and surface areas from multiple cortical parcellation packages

Citation for published version:

Mikhael, S & Pernet, CR 2019, 'A controlled comparison of thickness, volume and surface areas from multiple cortical parcellation packages' BMC Bioinformatics. DOI: <https://doi.org/10.1186/s12859-019-2609-8>

Digital Object Identifier (DOI):

<https://doi.org/10.1186/s12859-019-2609-8>

Link:

[Link to publication record in Edinburgh Research Explorer](#)

Document Version:

Publisher's PDF, also known as Version of record

Published In:

BMC Bioinformatics

General rights

Copyright for the publications made accessible via the Edinburgh Research Explorer is retained by the author(s) and / or other copyright owners and it is a condition of accessing these publications that users recognise and abide by the legal requirements associated with these rights.

Take down policy

The University of Edinburgh has made every reasonable effort to ensure that Edinburgh Research Explorer content complies with UK legislation. If you believe that the public display of this file breaches copyright please contact openaccess@ed.ac.uk providing details, and we will remove access to the work immediately and investigate your claim.



RESEARCH ARTICLE

Open Access



A controlled comparison of thickness, volume and surface areas from multiple cortical parcellation packages

Shadia S. Mikhael*  and Cyril Pernet

Abstract

Background: Cortical parcellation is an essential neuroimaging tool for identifying and characterizing morphometric and connectivity brain changes occurring with age and disease. A variety of software packages have been developed for parcellating the brain's cortical surface into a variable number of regions but interpackage differences can undermine reproducibility. Using a ground truth dataset (*Edinburgh_NIH10*), we investigated such differences for grey matter thickness (GM_{th}), grey matter volume (GM_{vol}) and white matter surface area (WM_{sa}) for the superior frontal gyrus (SFG), supramarginal gyrus (SMG), and cingulate gyrus (CG) from 4 parcellation protocols as implemented in the FreeSurfer, BrainSuite, and BrainGyrusMapping (BGM) software packages.

Results: Corresponding gyral definitions and morphometry approaches were not identical across the packages. As expected, there were differences in the bordering landmarks of each gyrus as well as in the manner in which variability was addressed. Rostral and caudal SFG and SMG boundaries differed, and in the event of a double CG occurrence, its upper fold was not always addressed. This led to a knock-on effect that was visible at the neighbouring gyri (e.g., knock-on effect at the SFG following CG definition) as well as gyral morphometric measurements of the affected gyri. Statistical analysis showed that the most consistent approaches were FreeSurfer's Desikan-Killiany-Tourville (DKT) protocol for GM_{th} and BrainGyrusMapping for GM_{vol} . Package consistency varied for WM_{sa} , depending on the region of interest.

Conclusions: Given the significance and implications that a parcellation protocol will have on the classification, and sometimes treatment, of subjects, it is essential to select the protocol which accurately represents their regions of interest and corresponding morphometrics, while embracing cortical variability.

Keywords: Cortical parcellation, Grey matter, Thickness, Volume, Surface area, Superior frontal gyrus, Supramarginal gyrus, Cingulate gyrus, Brain, Atlas

Background

Various magnetic resonance imaging (MRI) tools have been developed to characterise the changes that the human brain undergoes over the course of a lifetime. One way to characterize such changes is through surface-based modelling packages. Following the initial phase of pre-processing, the packages divide the brain into layers and parcels using a range of algorithms and atlases. Parcel morphometry is then interpreted through several

metrics such as cortical thickness, or grey matter thickness (GM_{th} [1]), grey matter volume (GM_{vol} [2, 3]), white matter surface area (WM_{sa} , [1]), sulcal length and depth [4], gyrification index [5, 6], and fractal dimensionality [7].

Morphometric analysis software tools are powerful techniques with multiple applications. Given their ability to examine critical cortical regions, they have proven essential for the identification of maturational changes (e.g. [8–10] and biomarkers of disease (e.g., application in multiple sclerosis [11]; autism spectrum disorder [12]; schizophrenia [13]; Alzheimer's disease [14], amnesic and non-amnesic mild cognitive impairment [15] to only name a few). From a computational perspective,

* Correspondence: s1163658@sms.ed.ac.uk

University of Edinburgh, Centre for Clinical Brain Sciences (CCBS), The Chancellor's Building, 49 Little France Crescent, Edinburgh EH16 4SB, UK



these tools show good repeatability (although OS variations can be an issue due to underlying libraries, see e.g., [16]) and reliability of measurements for the same individuals (e.g., [17]). From an anatomical perspective, some morphometric measurements have been validated against post-mortem analyses (for instance, Cardinale et al., [18] showed a good agreement between FreeSurfer cortical thickness estimations and histological measurements), whilst parcellation per se is typically assessed visually by experts, in comparison or not to manually prepared data (e.g., [19]). In our previous work, we investigated critical differences between popular brain image analysis tools with focus on their cortical parcellation protocols [20]. We identified a lack of details in terms of the reference populations used, inconsistencies in gyral border definitions, and uncertainties with variability considerations. We concluded with an emphasis on the need for such details due to the direct influences that the derived parcels would have on any consequent analysis. Here we present a controlled comparison between FreeSurfer, BrainSuite and BrainGyrusMapping to quantify how differences in algorithms and protocols led to differences in parcel metrics, in comparison to ground truth data [21].

Methods

Subjects

Publicly available MRI data from 10 healthy right-handed non-smokers (Table 1 - mean age 59.8) were used [22].

The subject data, including their T1 and T2-weighted volumes, are publically available in the Edinburgh Data-Share repository [22] organized in Brain Imaging Data Structure (BIDS [23]).

Data acquisition

All subjects were scanned at the Brain Research Imaging Centre, Edinburgh (UK) in a 1.5 T scanner (General Electric, Milwaukee, WI, USA). A coronal high resolution 3D T1-weighted (FSGE, 1*1.3*1 mm voxel size, TE 4.01 ms TR 9.8 ms flip angle 8°), an axial T2-weighted (SE, 1*1*2 mm voxel size, TE 104.9 ms TR 1320 ms flip angle 8°), and a T2 FLAIR volume were acquired for each subject, and reviewed by a consultant radiologist ensuring their good health. Additional details can be found in [21].

Table 1 Demographics of the 10 healthy subjects from the NIH-funded study

Subject ID	1	2	3	4	5	6	7	8	9	10
Age	57	56	63	64	64	57	59	61	62	55
Gender	M	M	F	F	M	F	F	F	M	M

5 male and 5 female right-handed subjects of mean age 59.8 were investigated

Materials

We chose 3 existing software packages to analyse the raw T1w data of each of the 10 subjects: FreeSurfer [24–26], BrainSuite [3], and BrainGyrusMapping [2]. A Linux version of FreeSurfer version 6.0 (freesurfer-Linux-centos6_x86_64-stable-pub-v6.0.0-2beb96c) was downloaded onto the department's server and run using the default *recon-all* command, which allowed us to compare their older Desikan-Killiany protocol [27] to its updated version, the Desikan-Killiany-Tourville protocol [19]. BrainSuite version 13a (build#1744, built with Qt 4.8.4 on Sept 112,013) was installed and run on a Windows 7, 64-bit operating system with 16G RAM, using the BrainSuite GUI. We used the default Cortical Surface Extraction Sequence, while refining the sulcal curves for accuracy. A BrainGyrusMapping (BGM, v 11.0.3888 beta = v 1.0) command-line tool was provided by Canon Medical Research Europe¹ and installed on the same Windows 7 system. This latter tool is a multi-atlas segmentation tool, originally built and validated using the data from the Medical Image Computing and Computer Assisted Intervention (MICCAI) 2012 challenge on multi-atlas labelling [2]. We selected the maximum number of atlases, 28, to be used by this tool rather than the default number, 7. All tools aside from BGM are freely available to the public. BGM's parcellation protocol is freely available as well [28]. We additionally ran each tool 3 times on the same platform to assess its repeatability.

The results from these tools were compared to those of our morphometrics tool, Masks2Metrics [29, 30], which we ran on the same data with corresponding consistent ground truth. Briefly, the T1 and T2 images were combined to enhance grey-white matter borders and parcels drawn manually using a detailed protocol which accounted for all known anatomical variability (see [21] for details and validation). Using this ground truth allowed to conduct a controlled comparison by measuring deviations from it for each package. The ground truth here acts as a reference frame, to compare one software against another, and as such agreement or disagreement with its border definition is irrelevant.

Parcels, metrics and statistical analysis

Package parcels

The cortical parcellation protocols, and in turn the derived parcels, differed across the 3 packages. We assessed parcels generated by FreeSurfer's 2 latest and most suitable protocols for cortical analysis: the Desikan-Killiany (DK, [27]) and the Desikan-Killiany-Tourville (DKT, [19]) protocols. The DKT protocol was introduced in version 5.3 as an improvement on the DK protocol, offering better parcellation accuracy, clarity and consistency. BrainSuite parcellations are based on an adaptation of the LONI curve protocol [31], whereas the BrainGyrusMapping

Table 2 A summary of the parcels we combined in each software package to yield comparable SFGs, SMGs and CGs

Software Package	SFG equivalent	SMG equivalent	CG equivalent
FreeSurfer-DK	SFG	SMG	rostral anterior cingulate + caudal anterior cingulate + posterior cingulate + isthmus cingulate
FreeSurfer-DKT	SFG	SMG	rostral anterior cingulate + caudal anterior cingulate + posterior cingulate + isthmus cingulate
BrainSuite	SFG	SMG	CG
BrainGyrusMapping	superior frontal gyrus medial segment (MSFG) + superior frontal gyrus	SMG	anterior (ACgG) + middle (MCgG) + posterior cingulate gyri (PCgG)

FreeSurfer-DK FreeSurfer parcellation according to the Desikan-Killiany protocol, *FreeSurfer-DKT* FreeSurfer parcellation according to the Desikan-Killiany-Tourville protocol

parcellations are done according to Neuromorphometrics’ brainCOLOR whole-brain protocol [28].

We focused our package analysis on 3 regions per subject hemisphere: the superior frontal gyrus (SFG) of the frontal lobe, the supramarginal gyrus (SMG) of the parietal lobe, and the cingulate gyrus (CG) of the cingulate cortex. These gyri were chosen on the basis that they are situated in different lobes, undergo structural changes with ageing [32] and dementia [33–37], and exhibit gender differences [32, 38, 39]. As the parcellation protocols differed, it was necessary at times to combine some parcels to produce comparable regions. Table 2 details the parcels we combined in each software package.

Reference parcels

The 10 subjects’ corresponding ground truth SFG, SMG and CG parcels which we compared to the package-derived parcels were manually segmented as described

in [21]. This study’s source data and derivatives, including the left and right gyral parcels, are available in the Edinburgh DataShare repository [22].

Metrics and statistical analysis

Various metrics are automatically calculated by each of the tools. We chose the 3 most popular and relevant ones for our ageing population: grey matter thickness (GM_{th} , e.g., [32–34, 40, 41]), grey matter volume (GM_{vol} , e.g., [41, 42]), and white matter surface area (WM_{sa} , e.g., [41, 42]). Both FreeSurfer and BrainSuite calculate these 3 metrics whilst BrainGyrusMapping provides GM_{vol} only. Several parcels were combined to form a region of interest depending on the region and package considered (Table 2). Metrics for such regions were derived by combining the original parcels’ metrics. For the case of GM_{th} , this meant averaging individual parcel metrics,

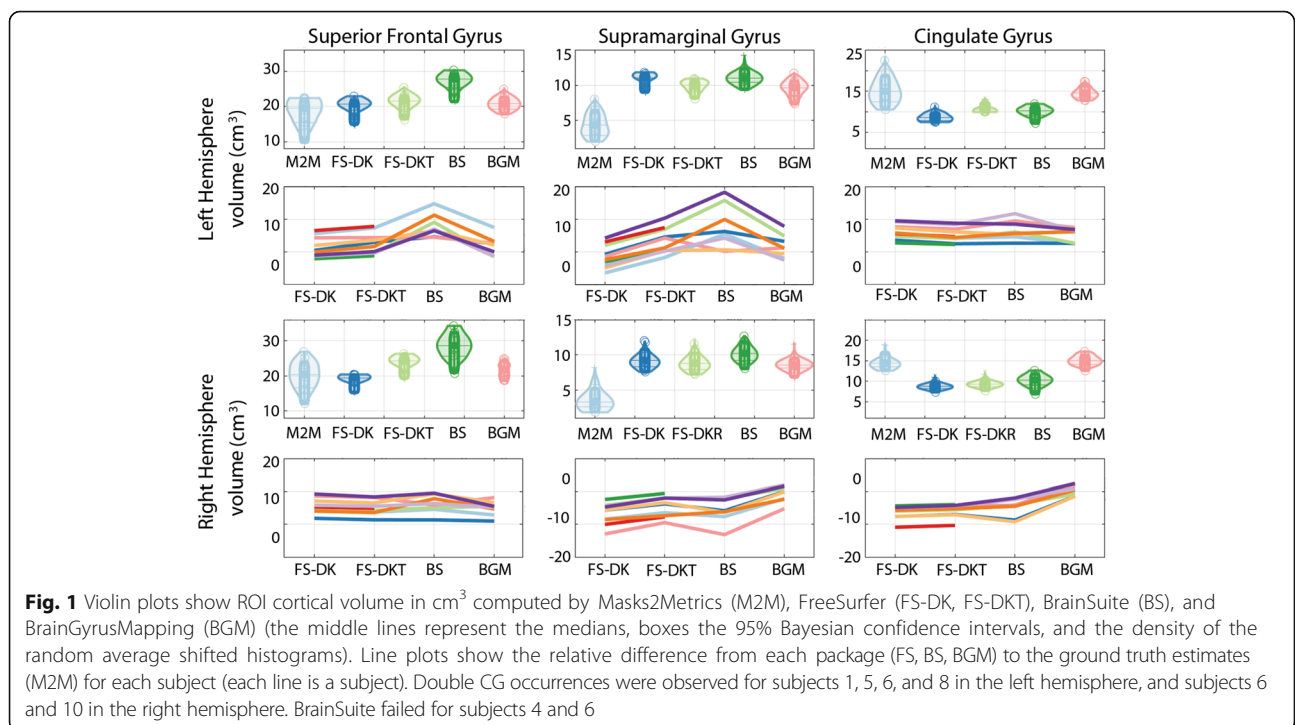


Table 3 The median and HDIs (in mm³) for the cortical volume (GM_{vol}) measurements

	Masks2Metrics Median [HDI]	FreeSurfer: DK atlas Median [HDI]	FreeSurfer: DKT atlas Median [HDI]	BrainSuite Median [HDI]	BrainGyrusMapping Median [HDI]
SFG					
left	19,503.53 [9913.7722069.11]	20,681.17 [14,686.9421537.14]	21,527.08 [16,623.7723099.58]	27,814.67 [21,414.3629212.03]	20,800.43 [17,852.8722681.01]
right	20,403.20 [12,194.7324057.71]	19,429.79 [15,404.2820261.04]	24,294.94 [19,114.7625609.17]	28,678.47 [20,745.3232308.96]	21,905.03 [18,689.6424212.91]
SMG					
left	4403.66 [2060.436335.99]	11,052.96 [9176.3911591.67]	10,019.87 [8209.6310722.12]	11,039.56 [9427.6712653.29]	9651.08 [7464.7110585.03]
right	3278.82 [1949.665159.66]	9220.52 [7603.2710626.95]	8800.85 [7220.0810266.21]	10,230.21 [8121.5411786.68]	8569.32 [6861.259386.06]
CG					
left	15,003.04 [10,855.2618826.12]	8553.84 [7541.809727.80]	10,552.95 [9925.1112077.79]	10,221.77 [7356.9711361.57]	14,587.58 [12,755.2016225.82]
right	14,447.00 [12,659.2516742.01]	8751.04 [7532.279607.27]	9275.60 [7665.5510144.70]	10,271.72 [6995.4111796.67]	15,036.93 [12,693.6516279.25]

HDI Highest density interval, *DK* Desikan-Killiany, *DKT* Desikan-Killiany-Tourville, *SFG* superior frontal gyrus, *SMG* supramarginal gyrus, *CG* cingulate gyrus

and for the case of GM_{vol} and WM_{sa} , this meant adding individual metrics.

Statistical analyses consisted of (i) descriptive statistics (medians and 95% Bayesian highest density intervals (HDIs) for each metric, region of interest (ROI), and hemisphere and (ii) a percentile bootstrap between packages on relative median differences. Here the ground truth values are subtracted from each measure, and those measures are then compared across packages. This enables us to compare packages relative to a common reference. The percentile bootstrap was adjusted for multiple comparisons per metric (i.e. all measurements for each hemisphere/ROI included in a single procedure to maintain the type 1 error at 5% [43]). The raw data (tsv files) and the Matlab script we wrote to perform the data analysis are available in the Edinburgh DataShare repository [44].

Results

Repeatability was observed for all packages, with identical results generated for each of the 3 runs (see

tsv files of the Edinburgh DataShare repository [44]). Parcellation influences were also evident visually. We highlighted them using screenshots taken from various angles (see Additional file 1). We identified 6 double CG occurrences in this dataset: 4 in the left hemisphere (subjects 1, 5, 6 and 8) and 2 in the right hemisphere (subjects 6 and 10).

Cortical volumes

Gray matter volumes automatically computed with the different packages were comparable, with overlapping confidence intervals (Fig. 1, Table 3) Compared to our ground truth, automated packages' median volumes were all significantly higher for the SMG and all slightly larger for the SFG although not significantly different (overlap of confidence intervals). This difference in SFG is reflected by the smaller estimates seen for the neighbouring CG parcel (non-overlap of confidence intervals for FreeSurfer and BrainSuite, but not BGM).

The comparison of relative median differences is shown in Table 4. Re-expressed in ground truth unit,

Table 4 Median GM_{vol} and confidence intervals (in mm^3) differences between the packages relative to Masks2Metrics

	DK vs DKT	DK vs BS	DK vs BGM	DKT vs BS	DKT vs BGM	BS vs BGM
SFG_l						
Mdn	-1255.57	-7455.64	-1038.89	-6138.14	357.69	6497.02
CI	[-1673.79-861.35]	[-9813.19-4232.67]	[-2185.45117.12]	[-8657.26-2474.29]	[-579.311108.25]	[3235.118427.86]
p	0.001*	0.001*	0.074	0.001*	0.438	0.001*
SFG_r						
Mdn	-4863.43	-9978.70	-3356.71	-5205.77	1739.75	6562.27
CI	[-5423.49-4214.39]	[-13,053.65-5992.21]	[-3976.01-2306.43]	[-8251.40-743.62]	[763.892702.32]	[2187.239684.41]
p	0.001*	0.001*	0.001*	0.018*	0.001*	0.001*
SMG_l						
Mdn	834.74	-5.13	1332.18	-952.46	374.88	1544.30
CI	[698.641110.56]	[-1528.761019.82]	[273.012264.50]	[-2288.88 45.24]	[-704.361532.69]	[-135.153192.02]
p	0.001*	0.948	0.016*	0.076	0.546	0.072
SMG_r						
Mdn	419.04	-504.81	602.52	-957.20	171.20	1476.29
CI	[345.40520.80]	[-1788.78641.65]	[-77.551141.13]	[-2317.49135.09]	[-525.82728.70]	[-223.252901.30]
p	0.001*	0.222	0.08	0.064	0.546	0.084
CG_l						
Mdn	-2200.11	-1257.29	-6072.94	1002.98	-3785.19	-4852.73
CI	[-2550.00-1915.54]	[-2281.19128.11]	[-6423.74-5459.66]	[-113.802519.34]	[-4245.08-3252.80]	[-6245.32-3756.85]
p	0.001*	0.084	0.001*	0.084	0.001*	0.001*
CG_r						
Mdn	-506.70	-1529.36	-6166.02	-1063.50	-5657.51	-4852.15
CI	[-578.10-415.37]	[-2542.65430.84]	[-6644.40-5882.54]	[-2051.44992.76]	[-6162.33-5373.53]	[-6851.68-3668.69]
p	0.001*	0.126	0.001*	0.254	0.001*	0.001*

DK Desikan-Killiany, DKT Desikan-Killiany-Tourville, BS BrainSuite, BGM BrainGyrusMapping, SFG_l/SFG_r left/right superior frontal gyrus, SMG_l/SMG_r left/right supramarginal gyrus, CG_l/CG_r left/right cingulate gyrus, Mdn median, CI confidence interval, *: significant difference

most noticeable volume difference were observed for BrainSuite (which differed significantly from FreeSurfer for SFG volumes, and from BGM for the SFG and CG) and for BGM (which differed from all other packages for CG and from FreeSurfer for SFG). Looking at the subject's plots (Fig. 1) reveals where differences are coming from. For the SMG volumes, larger differences were produced by BrainSuite. Its protocol vaguely defines the SMG, with only mention of it containing Brodmann area 40 and bordering the superior temporal gyrus [20, 31], hence the discrepancies within this package and across packages. For the CG volumes, when double gyri were present, they were not captured properly leading to underestimations, except for BGM especially in the right hemisphere. In addition, volume missing in the CG are sometimes misattributed to the SFG, in particular for BrainSuite. For instance, in subject 5, there is an omission of the upper CG fold caused by a double cingulate sulcus, making its SFG larger (see Additional file 1: Figure S1q-t). For subject 3 who has single CG occurrences, large relative SFG volumes are observed with BrainSuite because of differences in its medial, lateral and anterior borders compared to the remaining packages (indicated by arrows in (see Additional file 1: Figure S5 and S9)). Of interest, FreeSurfer DKT generates smaller relative volumes than DK for all CG scenarios (Fig. 1) because DKT accounts better than DK for double cingulate gyri, although imperfectly (Additional file 1: Figure S1, S2, S5, and S6). Furthermore, DKT's

relative SFG volumes are larger than DK's for all subjects even when they are adjoining double CGs. Although the SFG in such cases loses its medial-most fold to the CG, with the DKT protocol the SFG is larger both anteriorly and posteriorly (i.e., lengthwise to include the majority of the frontal pole) as well as laterally, into the middle frontal gyrus, due to its revised border definitions [19]. This is evident pictorially in Additional file 1: Figure S1, S2, S5, S6, S9, S10, S11, and S12.

Cortical thickness

Cortical thickness measurements computed following FreeSurfer's two parcellation routes were very similar to the ground truth (overlap of 95% HDI) while BrainSuite show significantly higher estimate than all other packages (just under double those of the other methods) along with higher dispersion (Fig. 2, Table 5). All packages were, however, still in agreement with the reported post-mortem values taken at the lateral (3.5 mm), medial (2.7 mm) and overall (2.5 mm) cortical surfaces [45].

Relative to the ground truth, BrainSuite showed a significant difference to both FreeSurfer outputs (DK and DKT) for all ROIs (Table 6). Examination of differences per subject (Fig. 2) revealed little difference between DK and DKT, yet large differences between them and BrainSuite, as well as across subjects within BrainSuite. This is explained (i) by the fact that thickness is not expected to change at the borders of parcels, and therefore

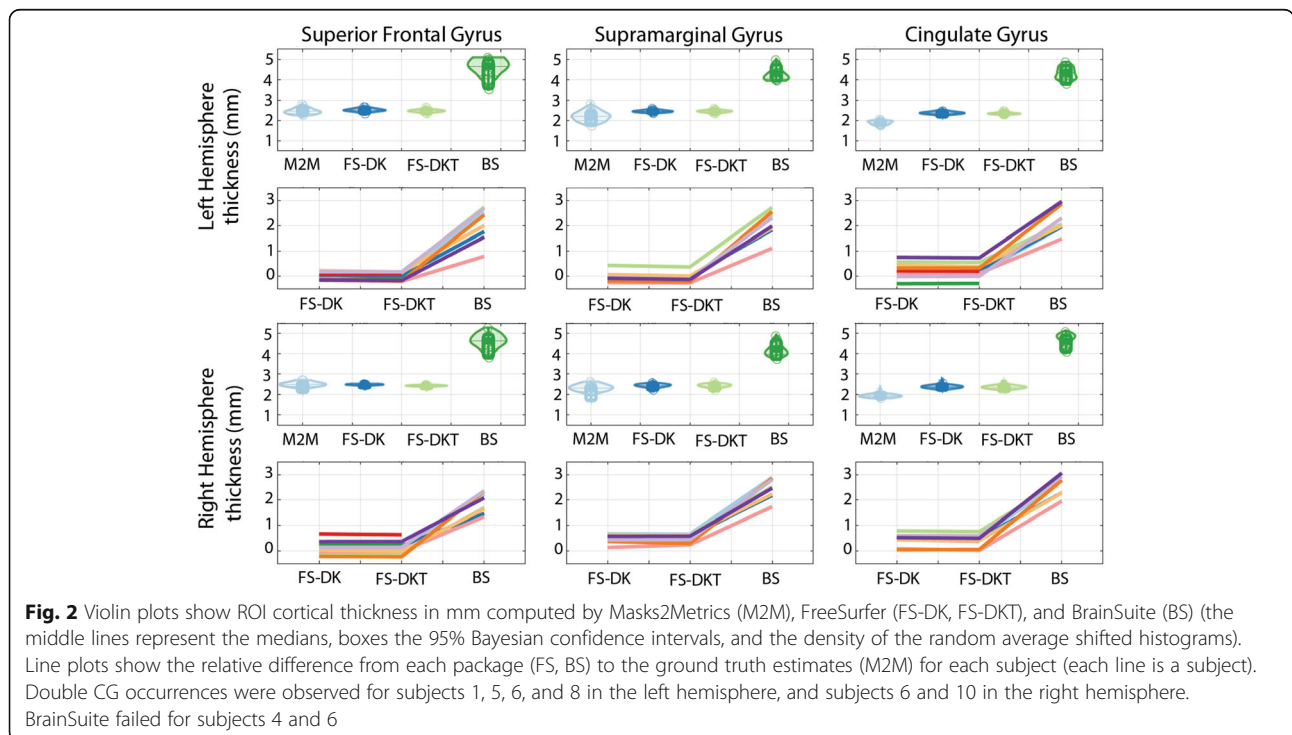


Table 5 Median and HDIs (in mm) for cortical thickness measurements

ROI	Masks2Metrics Median [HDI]	FreeSurfer: DK atlas Median [HDI]	FreeSurfer: DKT atlas Median [HDI]	BrainSuite Median [HDI]
SFG				
left	2.46 [2.26 2.63]	2.51 [2.34 2.60]	2.48 [2.34 2.56]	4.65 [3.51 4.99]
right	2.50 [2.12 2.63]	2.49 [2.36 2.52]	2.43 [2.30 2.46]	4.64 [3.80 4.94]
SMG				
left	2.20 [1.75 2.45]	2.45 [2.35 2.52]	2.45 [2.34 2.51]	4.30 [3.95 4.72]
right	2.32 [1.72 2.48]	2.44 [2.24 2.50]	2.43 [2.23 2.51]	4.23 [3.73 4.69]
CG				
left	1.89 [1.74 1.98]	2.37 [2.18 2.45]	2.35 [2.29 2.42]	4.33 [3.79 4.70]
right	1.95 [1.82 2.09]	2.40 [2.23 2.52]	2.37 [2.15 2.52]	4.62 [4.09 4.94]

HDI Highest density interval, *DK* Desikan-Killiany, *DKT* Desikan-Killiany-Tourville, *ROI* region of interest, *SFG* superior frontal gyrus, *SMG* supramarginal gyrus, *CG* cingulate gyrus

differences in volume between DK and DKT do not translate into differences in thickness and (ii) BrainSuite combines grey and white matter thicknesses rather than just grey matter (see [Discussion](#)).

Surface area

The packages' SFG and SMG surface area metrics were generally larger than the ground truth, whereas their CG metrics were generally smaller (Fig. 3, Table 7).

Relative to the ground truth, all SMG measurements were significantly different to one another in both hemispheres (Table 8). Significant differences existed between DKT and the remaining methods for all ROIs except for the left SFG when compared to BrainSuite). As with the relative cortical volumes, the largest relative surface areas were generally in the subjects with the double CG occurrence at both the CG and the affected SFG because larger gyral volumes are expected to have larger surface areas. Once again, DKT generated smaller relative volumes than DK for all CG scenarios as it accounted better than DK of both single and double gyri (see Additional

file 1: Figure S1, S2, S5, and S6). Unlike other subjects, subject 5's left SMG surface area with BrainSuite is relatively larger than its equivalent in the remaining protocols. This is also evident pictorially (see Additional file 1: Figure S3q-t) which demonstrates a wider BrainSuite SMG, terminating caudally, like DK, at the second segment of the caudal superior temporal sulcus rather than at the first segment as with DKT and BrainGyrusMapping.

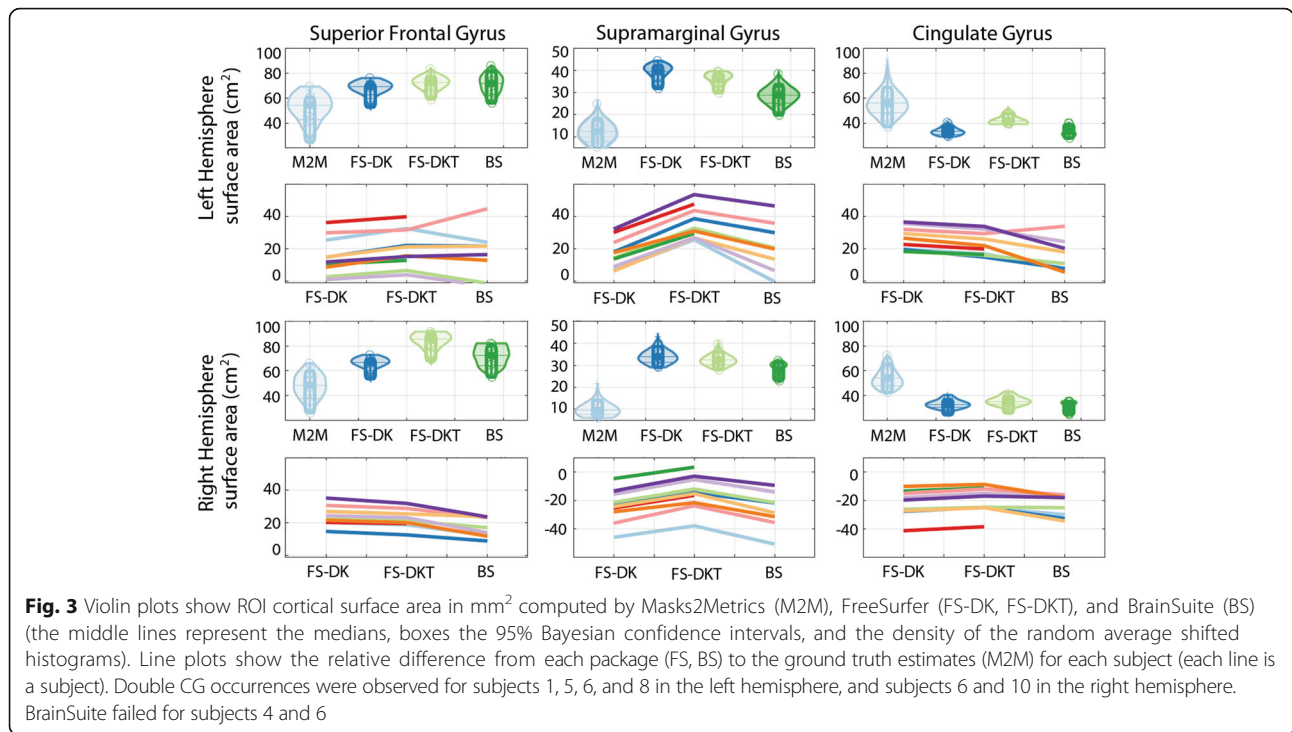
Discussion

The parcellation protocol we followed while segmenting the ground truth parcels enabled us to consistently identify and address any visible anatomical variability (see Additional file 1, [21]). Because of this, the parcels' shapes varied greatly across the cohort, creating large dispersions in the ground truth volumes (Fig. 1) and surface areas (Fig. 3). Using this as a reference frame to compare packages allowed thus to highlight how each package deals with these natural variations. The main contributor to variability in the CG and SFG is the cingulate sulcus [46] which can have a single or double

Table 6 Median GM_{th} and confidence intervals (in mm) differences between the packages relative to Masks2Metrics

	Left hemisphere			Right hemisphere		
	DK vs DKT	DK vs BS	DKT vs BS	DK vs DKT	DK vs BS	DKT vs BS
SFG						
Mdn [CI]	0.04[0.01 0.06]	-2.09[-2.50-1.63]	-2.13[-2.54-1.66]	0.05[0.04 0.06]	-2.15[-2.44-1.80]	-2.20[-2.49-1.85]
p	0.001*	0.001*	0.001*	0.001*	0.001*	0.001*
SMG						
Mdn [CI]	0.00[-0.01 0.02]	-1.86[-2.25-1.56]	-1.86[-2.24-1.57]	0.01[0.00 0.02]	-1.80[-2.17-1.49]	-1.81[-2.18-1.48]
p	0.76	0.001*	0.001*	0.18	0.001*	0.001*
CG						
Mdn [CI]	0.01[-0.01 0.04]	-1.91[-2.27-1.65]	-1.93[-2.28-1.65]	0.03[0.01 0.03]	-2.12[-2.44-1.88]	-2.15[-2.45-1.93]
p	0.18	0.001*	0.001*	0.001*	0.001*	0.001*

SFG superior frontal gyrus, *SMG* supramarginal gyrus, *CG* cingulate gyrus, *Mdn* median, *CI* confidence interval, *: significant difference



occurrence (and therefore a double CG occurrence), branches, as well as discontinuities, all of which are interpreted differently by each package. Given that it defines the dividing landmark between the CG and SFG, both gyri are highly variable, as are their volumes and surface areas. The SMG is also highly variable across the cohort, mainly due to its posterior border, as is its segmentation across the packages.

The size of our dataset and the use of 1.5 T MRI images are of course a limitation. There are variations which depends on age (in adults) that would be better captured with a larger sample capturing a wider range of age and higher resolution images. This is particularly true for gyrification (the process and the extent of folding) which varies with age [5] and can thus impact on

the identification of anatomical branches and borders. The current dataset was nevertheless variable enough to highlight issues in automated packages. For what is reported here, i.e. that the differences observed mainly stem from how anatomical variability in additional gyri and branching is handled, aging or higher resolution imaging has no impact. For instance, the presence/absence of double gyri is observed once the brain is fully formed and does not change across adulthood and is observed even with coarse image resolution.

With volume being (in theory) a product of thickness and surface area, and the thicknesses being generally stable for each package, larger surface areas are expected to accompany larger volumes, and vice versa and this is what we saw. We also observed that the inability to fully

Table 7 Median and HDIs (in mm²) for the surface area (WM_{sa}) measurements

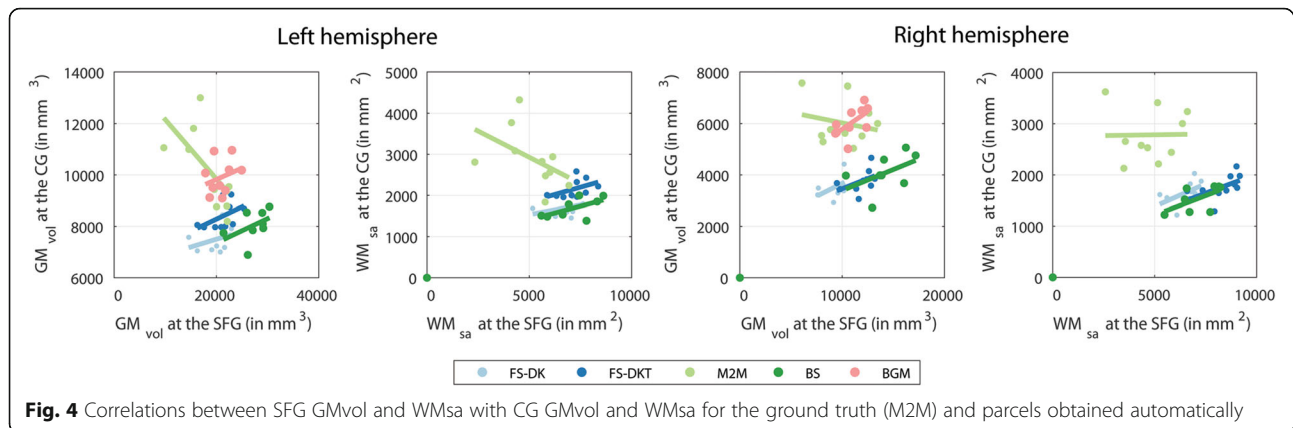
	Masks2Metrics Median [HDI]	FreeSurfer: DK atlas Median [HDI]	FreeSurfer: DKT atlas Median [HDI]	BrainSuite Median [HDI]
SFG				
left	5418.63[2524.486077.87]	6932.32[5241.287162.24]	7251.39[5914.927728.96]	7184.29[5600.438178.45]
right	4821.43[2678.175897.71]	6666.56[5371.966969.92]	8553.63[6779.629010.75]	7234.76[5492.588031.08]
SMG				
left	1238.45[472.231741.25]	3945.28[3211.174204.30]	3610.66[2979.003898.30]	2884.20[1980.263320.66]
right	951.54[606.111403.36]	3390.12[2914.763794.86]	3244.95[2788.073609.39]	2806.16[2283.533103.18]
CG				
left	5593.20[3681.956780.48]	3342.94[2928.283721.53]	4169.58[3917.894699.32]	3354.73[2778.523907.92]
right	5411.63[4339.366527.50]	3261.92[2445.713667.55]	3499.70[2602.553924.99]	3156.88[2448.173521.72]

HDI highest density interval, DK Desikan-Killiany, DKT Desikan-Killiany-Tourville, SFG superior frontal gyrus, SMG supramarginal gyrus, CG cingulate gyrus

Table 8 Median WM_{sa} differences (in mm³) between packages relative to the ground truth

	Left hemisphere		Right hemisphere	
	DK vs DKT	DK vs BS	DK vs DKT	DK vs BS
SFG				
Mdn[CI]	-435.36 [-667.46-293.24]	-352.74[- 789.72219.10]	-1878.16[- 2023.98-1702.11]	-665.24[- 116.37 24.94]
p	0.001*	0.236	0.001*	0.001*
SMG				
Mdn[CI]	300.02[253.18383.49]	1164.67[649.751554.81]	146.45[125.05193.34]	781.26[555.911007.28]
p	0.001*	0.001*	0.001*	0.001*
CG				
Mdn[CI]	-899.53[- 1009.71-819.93]	45.99[- 165.47365.27]	-247.98[- 285.87-192.15]	230.25[-48.94616.47]
p	0.001*	0.84	0.001*	0.116

DK Desikan-Killiany, DKT Desikan-Killiany-Tourville, BS BrainSuite, SFG superior frontal gyrus, SMG supramarginal gyrus, CG cingulate gyrus, Mdn median, CI confidence interval, *: significant difference



capture anatomical variability has knock-on effects on neighbouring regions, as was the case in FreeSurfer, BrainSuite, and BrainGyrusMapping where SFG GM_{vol} and WM_{sa} are proportional to the CG GM_{vol} and WM_{sa} , whilst no or the reverse effect were observed when segmenting regions manually (Fig. 4).

Although our work highlights differences between parcellation protocols, it is most likely that the corresponding outputs of image analysis tools in fact vary due to a combination of factors, and not just the parcellation phase. One step prior to parcellation in automated and semi-automated tools is the pre-processing phase. In FreeSurfer, for example, amongst other things, that phase is used to derive white and grey matter masks [1]. These are consequently split in the processing stage, as per a parcellation protocol, to form parcels. Such mask effects were not investigated in this manuscript although it could be contributing to differences, especially for thickness. Package inconsistency across sites (e.g., [47]) and operating systems (e.g., [16]) is another aspect to consider, although was not a contributing factor to our study as each package was run on only one computer and one operating system. Finally, and most relevant here, differences in algorithms can also account for observed differences. Volume is simply derived by counting the number of voxels in each parcel and thus directly reflects differences in parcellation protocols. Cortical thickness however is specific to grey matter in FreeSurfer, while in BrainSuite it refers to that of the gyrus, all the way down to the fundus, therefore capturing the combined grey and white matter thicknesses [31]. The combination of parcel definition and using the sulcal fundus to mark the border of a gyrus also explains inconsistencies in surface area measurements.

Conclusions

We previously investigated package differences in terms of their parcellation protocol definitions, raising awareness of the associated uncertainties stemming from the

well-reported anatomical variability that they are likely to encounter [20]. In our present work, we quantify the effects of these uncertainties through a healthy middle-aged dataset and manually-derived ground truth data with associated morphometrics. We show that multi-atlas parcellation (BGM) is the most accurate method and therefore encourage more research and usage of such tools. Explicit definition of the method used to compute thickness and surface area is another major factor, and since multi-atlas methods are currently limited to volume, we recommend using FreeSurfer's DKT approach with manual editing to derive grey matter thickness and white matter surface area.

Endnotes

¹Formerly Toshiba Medical Visualization Systems Europe.

Additional file

Additional file 1: Package screenshots. Screenshots from FreeSurfer, BrainSuite, and BrainGyrusMapping parcellation for each of the 10 subjects. The screenshots are occasionally overlaid by their equivalent ground truth parcellations. (DOCX 28298 kb)

Abbreviations

ACgG: Anterior cingulate gyrus; BGM: BrainGyrusMapping; BGM: BrainGyrusMapping; BIDS: Brain Imaging Data Structure; BS: BrainSuite; CG: Cingulate gyrus; CG_l/CG_r: Left/right cingulate gyrus; CI: Confidence interval; DK: Desikan-Killiany; DKT: Desikan-Killiany-Tourville; FreeSurfer-DK or FS-DK: FreeSurfer parcellation according to the Desikan-Killiany protocol; FreeSurfer-DKT or FS-DKT: FreeSurfer parcellation according to the Desikan-Killiany-Tourville; GM_{th} : Grey matter thickness; GM_{vol} : Grey matter volume; HDI: Highest density interval; MCgG: Middle cingulate gyrus; Mdn: Median; MICCAI: Medical Image Computing and Computer Assisted Intervention; MRI: Magnetic resonance imaging; MSFG: Superior frontal gyrus medial segment; PCgG: Posterior cingulate gyrus; ROI: Region of interest; SFG: Superior frontal gyrus; SFG_l/SFG_r: Left/right superior frontal gyrus; SMG: Supramarginal gyrus; SMG_l/SMG_r: Left/right supramarginal gyrus; T1w: T1-weighted; T2w: T2-weighted; WM_{sa} : White matter surface area

Acknowledgements

We would like to acknowledge the following individuals for their contributions towards our work:

Mark Bastin: for the 10-subject data set which we analysed in this study [22].
Corne Hoogendoorn: for advising on the BrainGyrusMapping software.

Funding

Data acquisition and preparation was funded by NIH grant R01 EB004155. Data preparation, collection, analysis, interpretation and writing was funded by SINAPSE-SPIRIT (a Scottish Funding Council HR09021 grant), the Tony Watson Scholarship and Canon Medical Research Europe.

Availability of data and materials

The datasets analysed during the current study are available in the Edinburgh Dashare repository, at <https://doi.org/10.7488/ds/2239> [22]. The Matlab (<https://uk.mathworks.com/products/matlab.html>, R2016a) code (.m file) we wrote for the statistical analysis as well as the datasets (tsv files) generated during the current study are available in the Edinburgh Dashare repository at <https://doi.org/10.7488/ds/2376> [44]. To derive the ground truth metrics for each of the subjects' ground truth gyri of interest, we ran our software, Masks2Metrics (M2M), version 1.0 [29, 48] freely available to all users under the GNU General Public License. The latest version of the software is available on GitHub [30]. All data generated or analysed during this study are included in this published article and its additional files.

Authors' contributions

SM co-wrote the Matlab code, processed and interpreted the data, and wrote and revised the manuscript. CP co-wrote the Matlab code, assisted with the statistical analysis, and revised the manuscript. All authors read and approved the final manuscript.

Ethics approval and consent to participate

The local ethics committee (Lothian Research Ethics Committee (LREC) 4–05/S1104/45) approved the study and informed consent was obtained from each subject.

Consent for publication

We confirm that we obtained consent to publish from the participant to report individual patient data.

Competing interests

The authors declare that they have no competing interests.

Publisher's Note

Springer Nature remains neutral with regard to jurisdictional claims in published maps and institutional affiliations.

Received: 15 July 2018 Accepted: 4 January 2019

Published online: 28 January 2019

References

- Fischl B, Dale AM. Measuring the thickness of the human cerebral cortex from magnetic resonance images. *Proc Natl Acad Sci U S A*. 2000;97(20):11050–5.
- Murphy S, Mohr B, Fushman Y, Poole I. Fast simple, accurate multi-atlas segmentation of the brain. In: *Workshop Biomedical Image Registration (WBIR)*; 2014. p. 1–10.
- Shattuck DW, Leahy RM. BrainSuite: an automated cortical surface identification tool. *Med Image Anal*. 2002;6(2):129–42.
- Kochunov P, Rogers W, Mangin JF, Lancaster J. A library of cortical morphology analysis tools to study development, aging and genetics of cerebral cortex. *Neuroinformatics*. 2012;10(1):81–96.
- Magnotta VA, Andreasen NC, Schultz SK, Harris G, Cizadlo T, Heckel D, Nopoulos P, Flaum M. Quantitative in vivo measurement of gyrfication in the human brain: changes associated with aging. *Cereb Cortex*. 1999;9(2):151–60.
- Schaer M, Cuadra MB, Schmansky N, Fischl B, Thiran JP, Eliez S. How to measure cortical folding from MR images: a step-by-step tutorial to compute local Gyrfication index. *J Vis Exp*. 2012;(59):e3417.
- Madan CR, Kensinger EA. Cortical complexity as a measure of age-related brain atrophy. *Neuroimage*. 2016;134:617–29.
- Hogstrom LJ, Westlye LT, Walhovd KB, Fjell AM. The structure of the cerebral cortex across adult life: age-related patterns of surface area, thickness, and Gyrfication. *Cereb Cortex*. 2013;23(11):2521–30.
- Bajaj S, Alkozei A, Dailey NS, Killgore WDS. Brain aging: uncovering cortical characteristics of healthy aging in young adults. *Front Aging Neurosci*. 2017;9:412.
- Tammes CK, Herting MM, Goddings AL, Meuwese R, Blakemore SJ, Dahl RE, Guroglu B, Raznahan A, Sowell ER, Crone EA, et al. Development of the cerebral cortex across adolescence: a multisample study of inter-related longitudinal changes in cortical volume, surface area, and thickness. *J Neurosci*. 2017;37(12):3402–12.
- Steenwijk MD, Geurts JJ, Daams M, Tijms BM, Wink AM, Balk LJ, Tevarie PK, Uitdehaag BM, Barkhof F, Vrenken H, et al. Cortical atrophy patterns in multiple sclerosis are non-random and clinically relevant. *Brain*. 2016;139(Pt 1):115–26.
- Yang DY, Beam D, Pelphrey KA, Abdullahi S, Jou RJ. Cortical morphological markers in children with autism: a structural magnetic resonance imaging study of thickness, area, volume, and gyrfication. *Mol Autism*. 2016;7:11.
- Liu B, Zhang XL, Cui Y, Qin W, Tao Y, Li J, Yu CS, Jiang TZ. Polygenic risk for schizophrenia influences cortical Gyrfication in 2 independent general populations. *Schizophr Bull*. 2017;43(3):673–80.
- Cai K, Xu H, Guan H, Zhu W, Jiang J, Cui Y, Zhang J, Liu T, Wen W. Identification of early-stage Alzheimer's disease using Sulcal morphology and other common neuroimaging indices. *PLoS One*. 2017;12(1):e0170875.
- Guan H, Liu T, Jiang JY, Tao DC, Zhang JC, Niu HJ, Zhu WL, Wang YL, Cheng J, Kochan NA, et al. Classifying MCI subtypes in community-dwelling elderly using cross-sectional and longitudinal MRI-based biomarkers. *Front Aging Neurosci*. 2017;9:309.
- Gronenschild EH, Habets P, Jacobs HI, Mengelers R, Rozendaal N, van Os J, Marcelis M. The effects of FreeSurfer version, workstation type, and Macintosh operating system version on anatomical volume and cortical thickness measurements. *PLoS One*. 2012;7(6):e38234.
- Madan CR, Kensinger EA. Test-retest reliability of brain morphology estimates. *Brain Inform*. 2017;4(2):107–21.
- Cardinale F, Chinnici G, Bramerio M, Mai R, Sartori I, Cossu M, Lo Russo G, Castana L, Colombo N, Caborni C, et al. Validation of FreeSurfer-estimated brain cortical thickness: comparison with histologic measurements. *Neuroinformatics*. 2014;12(4):535–42.
- Klein A, Tourville J. 101 labeled brain images and a consistent human cortical labeling protocol. *Front Neurosci*. 2012;6:171.
- Mikhael S, Hoogendoorn C, Valdes-Hernandez M, Pernet C. A critical analysis of neuroanatomical software protocols reveals clinically relevant differences in parcellation schemes. *Neuroimage*. 2018;170:348–64.
- Mikhael S, Valdes-Hernandez M, Hoogendoorn C, Wardlaw J, Bastin ME, Pernet C: Manually-Parcellated data accounting for all known anatomical variability. *Scientific eData* 2018, Accepted Nov 2018.
- Bastin M, Wardlaw J, Pernet C, Mikhael S. *Edinburgh_NIH10*. In: *Edinburgh_NIH10*. Edited by university of Edinburgh. College of Medicine and Veterinary Medicine CfCBSEI. Edinburgh: Dashare; 2017.
- Gorgolewski KJ, Auer T, Calhoun VD, Craddock RC, Das S, Duff EP, Flandin G, Ghosh SS, Glatard T, Halchenko YO, et al. The brain imaging data structure, a format for organizing and describing outputs of neuroimaging experiments. *Sci Data*. 2016;3:9.
- FreeSurfer [<http://surfer.nmr.mgh.harvard.edu>].
- Dale AM, Fischl B, Sereno MI. Cortical surface-based analysis. I Segmentation and surface reconstruction. *Neuroimage*. 1999;9(2):179–94.
- Fischl B, Sereno MI, Dale AM. Cortical surface-based analysis. II: inflation, flattening, and a surface-based coordinate system. *Neuroimage*. 1999;9(2):195–207.
- Desikan RS, Segonne F, Fischl B, Quinn BT, Dickerson BC, Blacker D, Buckner RL, Dale AM, Maguire RP, Hyman BT, et al. An automated labeling system for subdividing the human cerebral cortex on MRI scans into gyral based regions of interest. *Neuroimage*. 2006;31(3):968–80.
- BrainCOLOR cortical parcellation protocol [https://www.binarybottle.com/braincolor/docs/BrainCOLOR_cortical_parcellation_protocol.pdf].
- Mikhael S, Gray C. Masks2Metrics (M2M): A Matlab Toolbox for Gold Standard Morphometrics. *Journal of Open Source Software*. 2018;3(22):436.
- Masks2Metrics [<https://github.com/Edinburgh-Imaging/Masks2Metrics>].
- Pantazis D, Joshi A, Jiang J, Shattuck DW, Bernstein LE, Damasio H, Leahy RM. Comparison of landmark-based and automatic methods for cortical surface registration. *Neuroimage*. 2010;49(3):2479–93.

32. Thambisetty M, Wan J, Carass A, An Y, Prince JL, Resnick SM. Longitudinal changes in cortical thickness associated with normal aging. *Neuroimage*. 2010;52(4):1215–23.
33. Bakkour A, Morris JC, Dickerson BC. The cortical signature of prodromal AD regional thinning predicts mild AD dementia. *Neurology*. 2009;72(12):1048–55.
34. Boccardi M, Sabattoli F, Laakso MP, Testa C, Rossi R, Beltramello A, Soininen H, Frisoni GB. Frontotemporal dementia as a neural system disease. *Neurobiol Aging*. 2005;26(1):37–44.
35. Jones BF, Barnes J, Uylings HBM, Fox NC, Frost C, Witter MP, Scheftens P. Differential regional atrophy of the cingulate gyrus in Alzheimer disease: a volumetric MRI study. *Cereb Cortex*. 2006;16(12):1701–8.
36. Rosen HJ, Gorno-Tempini ML, Goldman WP, Perry RJ, Schuff N, Weiner M, Feiwell R, Kramer JH, Miller BL. Patterns of brain atrophy in frontotemporal dementia and semantic dementia. *Neurology*. 2002;58(2):198–208.
37. Eskildsen SF, Coupe P, Garcia-Lorenzo D, Fonov V, Pruessner JC, Collins DL. Alzheimer's disease neuroimaging I: prediction of Alzheimer's disease in subjects with mild cognitive impairment from the ADNI cohort using patterns of cortical thinning. *Neuroimage*. 2013;65:511–21.
38. Resnick SM, Goldszal AF, Davatzikos C, Golski S, Kraut MA, Metter EJ, Bryan RN, Zonderman AB. One-year age changes in MRI brain volumes in older adults. *Cereb Cortex*. 2000;10(5):464–72.
39. Sowell ER, Peterson BS, Kan E, Woods RP, Yoshii J, Bansal R, Xu DR, Zhu HT, Thompson PM, Toga AW. Sex differences in cortical thickness mapped in 176 healthy individuals between 7 and 87 years of age. *Cereb Cortex*. 2007;17(7):1550–60.
40. Madan C, Kensinger E. Predicting age from cortical structure across the lifespan. *Eur J Neurosci*. 2018;47(5):399–416.
41. Cox SR, Bastin ME, Ritchie SJ, Dickie DA, Liewald DC, Munoz Maniega S, Redmond P, Royle NA, Pattie A, Valdes Hernandez M, et al. Brain cortical characteristics of lifetime cognitive ageing. *Brain Struct Funct*. 2018;223(1):509–18.
42. Lemaitre H, Goldman AL, Sambataro F, Verchinski BA, Meyer-Lindenberg A, Weinberger DR, Mattay VS. Normal age-related brain morphometric changes: nonuniformity across cortical thickness, surface area and gray matter volume? *Neurobiol Aging*. 2012;33(3):617 e611–9.
43. Wilcox R. Introduction to Robust Estimation and Hypothesis Testing. 3rd ed; 2012. p. 398–401.
44. Mikhael S, Pernet C. Morphometric data for Edinburgh_NIH10 dataset - all package runs. In: University of Edinburgh. College of Medicine and Veterinary Medicine CfCBSEI, editor. Edinburgh DataShare. Edinburgh: Edinburgh DataShare; 2018.
45. von Economo C. The Cytoarchitectonics of the human cerebral cortex. London: Oxford Univ. Press; 1929.
46. Ono M, Kubik S, Abernathy CD. Atlas of the cerebral sulci, 1 edn: Georg Thieme Verlag; 1990.
47. Iscan Z, Jin TB, Kendrick A, Szeglin B, Lu H, Trivedi M, Fava M, McGrath PJ, Weissman M, Kurian BT, et al. Test-retest reliability of FreeSurfer measurements within and between sites: effects of visual approval process. *Hum Brain Mapp*. 2015;36(9):3472–85.
48. Mikhael S, Gray C. Masks2Metrics (M2M) 1.0: a Matlab tool for region-of-interest metrics. 1.0 ed. University of Edinburgh: Centre for Clinical Brain Sciences: Datashare; 2018. Software

Ready to submit your research? Choose BMC and benefit from:

- fast, convenient online submission
- thorough peer review by experienced researchers in your field
- rapid publication on acceptance
- support for research data, including large and complex data types
- gold Open Access which fosters wider collaboration and increased citations
- maximum visibility for your research: over 100M website views per year

At BMC, research is always in progress.

Learn more biomedcentral.com/submissions

