



THE UNIVERSITY *of* EDINBURGH

## Edinburgh Research Explorer

### **420,000 year assessment of fault leakage rates shows geological carbon storage is secure**

**Citation for published version:**

Miocic, JM, Gilfillan, SMV, Frank, N, Schroeder-ritzrau, A, Burnside, NM & Haszeldine, RS 2019, '420,000 year assessment of fault leakage rates shows geological carbon storage is secure' Scientific Reports, vol. 9, no. 1. DOI: 10.1038/s41598-018-36974-0

**Digital Object Identifier (DOI):**

[10.1038/s41598-018-36974-0](https://doi.org/10.1038/s41598-018-36974-0)

**Link:**

[Link to publication record in Edinburgh Research Explorer](#)

**Document Version:**

Publisher's PDF, also known as Version of record

**Published In:**

Scientific Reports

**General rights**

Copyright for the publications made accessible via the Edinburgh Research Explorer is retained by the author(s) and / or other copyright owners and it is a condition of accessing these publications that users recognise and abide by the legal requirements associated with these rights.

**Take down policy**

The University of Edinburgh has made every reasonable effort to ensure that Edinburgh Research Explorer content complies with UK legislation. If you believe that the public display of this file breaches copyright please contact [openaccess@ed.ac.uk](mailto:openaccess@ed.ac.uk) providing details, and we will remove access to the work immediately and investigate your claim.



# SCIENTIFIC REPORTS



## OPEN 420,000 year assessment of fault leakage rates shows geological carbon storage is secure

Johannes M. Miocic<sup>1,2</sup>, Stuart M. V. Gilfillan<sup>1</sup>, Norbert Frank<sup>3</sup>, Andrea Schroeder-Ritzrau<sup>3</sup>, Neil M. Burnside<sup>4</sup> & R. Stuart Haszeldine<sup>1</sup>

Carbon capture and storage (CCS) technology is routinely cited as a cost effective tool for climate change mitigation. CCS can directly reduce industrial CO<sub>2</sub> emissions and is essential for the retention of CO<sub>2</sub> extracted from the atmosphere. To be effective as a climate change mitigation tool, CO<sub>2</sub> must be securely retained for 10,000 years (10 ka) with a leakage rate of below 0.01% per year of the total amount of CO<sub>2</sub> injected. Migration of CO<sub>2</sub> back to the atmosphere via leakage through geological faults is a potential high impact risk to CO<sub>2</sub> storage integrity. Here, we calculate for the first time natural leakage rates from a 420 ka paleo-record of CO<sub>2</sub> leakage above a naturally occurring, faulted, CO<sub>2</sub> reservoir in Arizona, USA. Surface travertine (CaCO<sub>3</sub>) deposits provide evidence of vertical CO<sub>2</sub> leakage linked to known faults. U-Th dating of travertine deposits shows leakage varies along a single fault and that individual seeps have lifespans of up to 200 ka. Whilst the total volumes of CO<sub>2</sub> required to form the travertine deposits are high, time-averaged leakage equates to a linear rate of less than 0.01%/yr. Hence, even this natural geological storage site, which would be deemed to be of too high risk to be selected for engineered geologic storage, is adequate to store CO<sub>2</sub> for climate mitigation purposes.

The integrity of engineered subsurface geological carbon dioxide (CO<sub>2</sub>) reservoirs is governed by a range of geological, geochemical, and geotechnical factors. Faults and naturally occurring or induced fracture networks can form preferential fluid pathways that bypass impermeable caprock seals and may lead to rapid migration of CO<sub>2</sub> from the subsurface reservoir to shallow aquifers or the atmosphere<sup>1–4</sup>. Fracture permeability, which controls the flow rate and thus leakage rates, is dependent on the fracture aperture, the orientation of the local stress field, the dissolution and precipitation of minerals, host rock strength and permeability, the fluid type, fluid pressures and fluid flow rates<sup>5–8</sup>. Understanding flow of CO<sub>2</sub>-rich fluids through the subsurface is crucial as any leakage to the atmosphere must be below a range of 0.001–0.01% per year of the CO<sub>2</sub> injected to ensure the effectiveness of carbon capture and storage as mitigation tool to avert severe climate change<sup>9,10</sup>.

CO<sub>2</sub> derived from natural earth processes accumulates in subsurface rock formations where it can remain naturally trapped over geological time periods. These natural CO<sub>2</sub> stores can be found in many sedimentary basins worldwide and provide a unique opportunity to study the environmental<sup>11,12</sup> and human health<sup>13</sup> impacts of leakage, as well as the long-term behaviour of, and the retention mechanisms for, CO<sub>2</sub> in the subsurface<sup>14,15</sup>. The Colorado Plateau, south-western USA, and surrounding areas contain at least 16 predominantly magmatically sourced CO<sub>2</sub> reservoirs<sup>16,17</sup>. Based on estimates of the timing of CO<sub>2</sub> injection, these reservoirs have securely retained CO<sub>2</sub> for 10<sup>5</sup>–10<sup>6</sup> years<sup>16–19</sup>, comparative to the required retention timescale of CO<sub>2</sub> storage in engineered sites of 10 ka<sup>20</sup>.

However, travertine deposits indicate CO<sub>2</sub> leakage to the surface in recent geological times at several locations in the region. This includes the well-studied Green River/Crystal Geysers area where CO<sub>2</sub>-rich fluids are leaking to the surface through fractures in the damage zones of two normal faults, through an abandoned petroleum exploration well, and in natural, off fault springs and seeps<sup>12,21–24</sup>. Travertine deposits linked to tectonic structures can also provide a record of fault movement as they can be dated using U-series methods<sup>25</sup>. Such dates have successfully been used to reconstruct leakage histories along faults<sup>11</sup>, and to gain insights into the volumes of CO<sub>2</sub>

<sup>1</sup>School of GeoSciences, University of Edinburgh, James Hutton Road, Edinburgh, EH9 3FE, UK. <sup>2</sup>Institute of Earth and Environmental Sciences, University of Freiburg, Albertstr. 23b, 79104, Freiburg, Germany. <sup>3</sup>Institute for Environmental Physics, University of Heidelberg, Im Neuenheimer Feld 229, 69120, Heidelberg, Germany. <sup>4</sup>School of Engineering, University of Glasgow, James Watt South Building, Glasgow, G12 8QQ, UK. Correspondence and requests for materials should be addressed to J.M.M. (email: [johannes.miocic@geologie.uni-freiburg.de](mailto:johannes.miocic@geologie.uni-freiburg.de))

leaked<sup>26</sup>. Travertines have also been used to reveal continental-scale links between the mantle and groundwater systems<sup>27</sup>.

To study how a CO<sub>2</sub> storage site may leak over many thousands of years, here we examine a very large (>4.7 × 10<sup>10</sup> m<sup>3</sup> of recoverable CO<sub>2</sub>) natural accumulation, within the St Johns Dome located on the border of northern Arizona and New Mexico. At this site faults extend upwards from the reservoir, through the caprock, to the surface<sup>27–29</sup>. These faults are directly linked to locations of modern CO<sub>2</sub> seeps<sup>30,31</sup> and geologically older accumulations of travertine from past CO<sub>2</sub> leakage. Here, we examine the history of CO<sub>2</sub> leakage along structural elements in the region above the natural CO<sub>2</sub> reservoir. The subsurface reservoir of over ~600 km<sup>2</sup> fed 102 travertine mounds, which cover a surface area of more than 30 km<sup>2</sup> (Fig. 1). These attest to vertical migration of CO<sub>2</sub>-charged fluids from the reservoir to the surface. The formally commercially exploited reservoir (>90% CO<sub>2</sub>)<sup>16</sup> lies within rocks of the Permian Supai Formation (siltstones, sandstones and limestones) which are located in 400–700 m depth within a broad, north-west-trending asymmetrical anticline that is dissected by the steeply dipping NW-SE trending Coyote Wash fault (Fig. 1)<sup>29</sup>. The gas phase CO<sub>2</sub> is of magmatic origin<sup>16,30</sup> and the CO<sub>2</sub> contained in the reservoir is associated with the nearby Springerville volcanic field where volcanic activity occurred between 8.97 ± 0.19 Ma and 0.31 ± 0.01 Ma via more than 400 separate volcanic vents<sup>32</sup>.

Noble gas and water geochemistry data indicate that CO<sub>2</sub> rich fluids still migrate today from the subsurface reservoir along faults to the surface<sup>30,33</sup>. Present day travertine formation occurs along the northern edge of a massive, 6.5 km by 3.5 km, travertine platform north of Lyman Lake (Fig. 1)<sup>27</sup>. Previous U-Th dating of the travertine deposits around Lyman Lake and Salado Springs reveal a history of CO<sub>2</sub> leakage over the past ~350 ka<sup>27,34</sup>. Here, we provide new insights into the leakage history along the Buttes normal fault, a laramidic compressional fault<sup>34</sup> which may be a northern extension of the Coyote Wash fault<sup>28</sup>, using U-Th dating of travertine mounds that align with the fault trace over a distance of more than 7 km (Figs 1 and 2). Note that the fault is poorly exposed and thus the mapped surface fault trace is associated with some spatial uncertainty (~100 m). Linking travertine ages with travertine mass enables us to estimate volumes and rates of CO<sub>2</sub> leaked to the surface and, for the first time, compare those to volumes of CO<sub>2</sub> stored within the reservoir.

### Travertine U-Th dates Provide a 500 ka history of CO<sub>2</sub> leakage

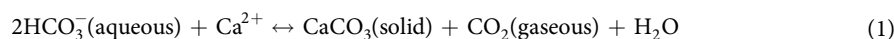
Using samples collected from manual surface investigations, we obtained a total of 16 ages from 10 travertine mounds along the Buttes Fault using the U-Th method<sup>35,36</sup>, with an additional six samples exhibiting ages outside the limits (~550 ka) of the dating technique (see Methods and Supplementary Information). For the mounds where a single age was obtained the samples were taken from the stratigraphically highest point. For mounds with several ages, samples were collected in vertical cross-sections through the mounds. The intimately grown spar calcite crystals of surface-deposited carbonate samples are internally clean and pure. One sample showed limited evidence of windblown contamination (<sup>230</sup>Th/<sup>232</sup>Th activity ratios of less than 25) and was discarded. The absence of evidence of windblown contamination from local detritus and younger/older calcite material provides confidence in the quality of the samples and that reliable ages could be retrieved.

Travertine U-Th ages range from 54 ± 1 ka to 420 ± 18 ka along the Buttes Fault, with young ages (<170 ka) only occurring at the southern part of the studied fault section (Fig. 3). U-Th ages of the northernmost studied mound (No. 21, Fig. 3) range from 391 ± 18 ka to 178 ± 2 ka, while mounds at the southern end of the fault (Nos. 2 to 8, Fig. 3) indicate that CO<sub>2</sub> leakage occurred from 420 ± 18 ka until 54 ± 1 ka. Single U-Th dates cannot constrain the length of the active depositional period of each mound, nor when it was initiated or terminated. However, for the mounds with five (No. 21), four (No. 6), and two (No. 3) dated samples, the minimum lifespans can be constrained to 213 ka, 94 ka, and 145 ka, respectively. Whilst periods of inactivity cannot be ruled out, it demonstrates that fluid migration pathways along faults can stay open over several 100 ka. It is notable that within the last 150 ka travertines have only formed in the southern part of the fault and that samples exceeding the dating limits of the U-Th method are located dominantly along the northern part of the fault.

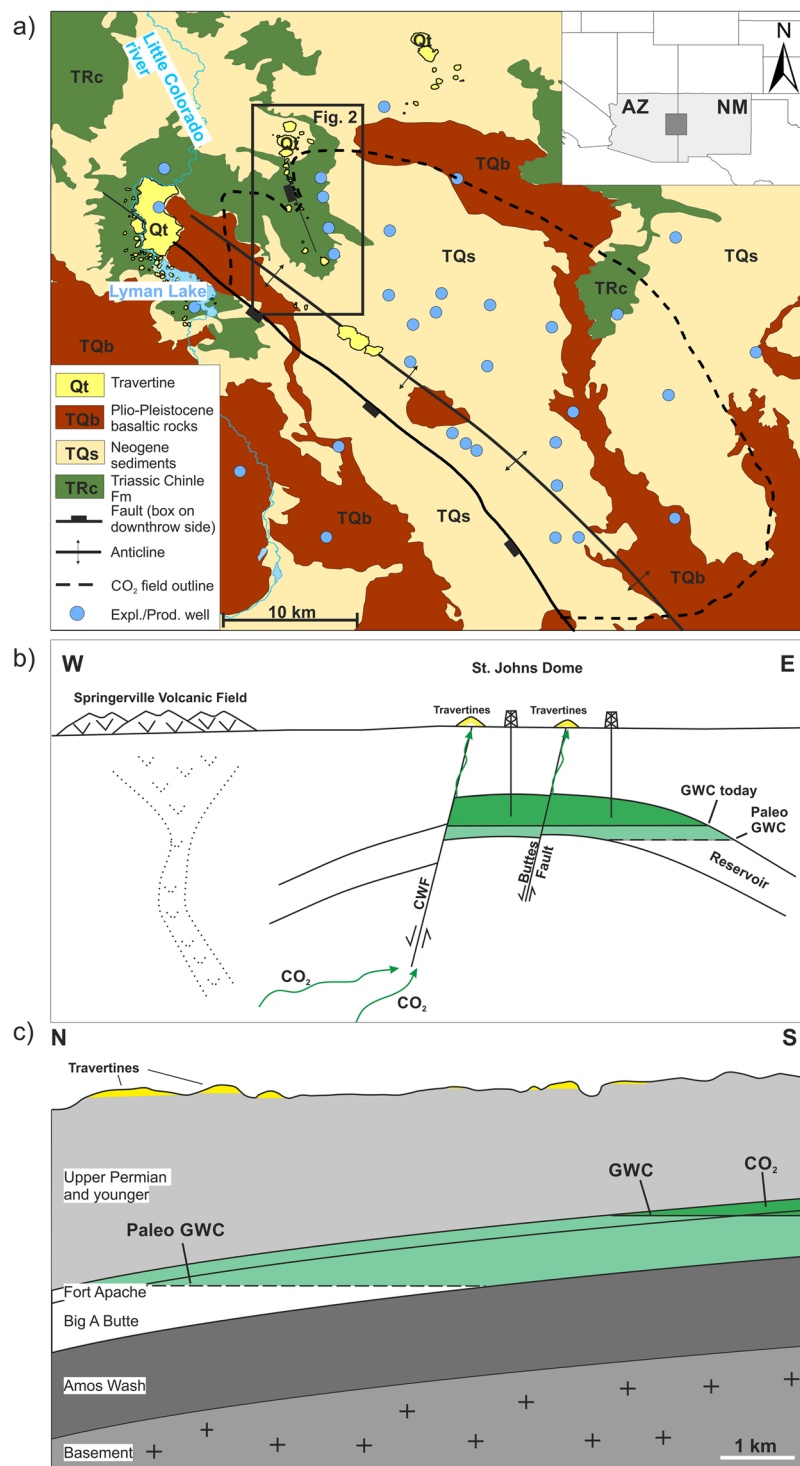
The southwards migration of CO<sub>2</sub> leakage along the fault through time could be caused by a range of mechanisms, namely; (i) closure of pathways due to mineral precipitation, (ii) changes in hydrology due to climatic changes, (iii) local or triggered seismic activity on the fault, or (iv) a change in CO<sub>2</sub> supply. Based on petrographic relationships of authigenic minerals and geochemical modelling of the mineral phases it has been shown that reservoir pressures were higher in the past (Moore *et al.*<sup>29</sup>), indicating a thicker, spatially more extensive, gas-filled reservoir interval. We suggest that the travertine mounds located outside the present day subsurface extent of the reservoir attest to this paleo-reservoir extent and that continuous leakage of large volumes of CO<sub>2</sub> from the subsurface reservoir led to a depletion of the reservoir. This depletion led to a movement of the gas-water-contact (GWC) upwards to the higher parts of the anticline, cutting off the CO<sub>2</sub> supply to the northern end of the Buttes Fault and thus ending travertine precipitation (Figs 1 and 2). Hence, travertine volumes combined with U-Th ages can enable the calculation of leakage volumes from the reservoir through time.

### CO<sub>2</sub> leakage volume and rates

Travertine formation occurs when CO<sub>2</sub>-charged fluids outgas CO<sub>2</sub> as they migrate to shallower depths and lower pressure, driving CaCO<sub>3</sub> supersaturation and carbonate precipitation:



Work on travertine deposits on the Colorado Plateau indicates that only between 1% and 10% of the dissolved CO<sub>2</sub> is precipitated as travertine with the remainder being either vented as free gas into the atmosphere or retained in solution<sup>1,11</sup>. Calculating the mass of CO<sub>2</sub> stored within the travertine mounds thus allows for an estimation of CO<sub>2</sub> leaked to the atmosphere. We calculate the volume of each travertine mound along the Buttes Fault using mound thickness and area (Fig. 3, see details in Methods). Combining this with calcium carbonate density



**Figure 1.** Location and geological setting of the St. Johns Dome natural CO<sub>2</sub> reservoir. (a) Map of the St. Johns Dome area showing the extent of the CO<sub>2</sub> reservoir in the subsurface, orientation of the studied faults, the location of travertine deposits, and the location of exploration and production wells used to build the subsurface model. Black rectangle indicates the location of the investigated travertine deposits along the Buttes Fault, which straddles the gas water contact, see Fig. 2. Inset shows the location of the study area at the Arizona (AZ) – New Mexico (NM) border. (b) Sketch of the subsurface structural setting of the St. Johns Dome CO<sub>2</sub> reservoir. The reservoir is located in the crest of a faulted anticline, the CO<sub>2</sub> charge is associated with the nearby Springerville volcanic field. The magmatic CO<sub>2</sub> migrates into the reservoir along the deep seated Coyote Wash Fault (CWF) and from there along faults to the surface where travertine precipitates. The gas-water-contact indicates the boundary between the gas-filled and the water-filled reservoir interval. The continuous CO<sub>2</sub> leakage caused a shrinkage of the reservoir volume and an up-dip migration of the gas-water contact, with a paleo-GWC illustrating the original reservoir extent. (c) Sketch parallel to the Buttes normal fault illustrating the geological subsurface setting and the travertine deposits on the surface. Vertical exaggeration ~15x. The present day GWC

is located at the southern end of the fault, towards the top of the anticline. Travertine deposits on the surface demonstrate that vertical leakage of CO<sub>2</sub> occurred at the northern end of the fault in the past, highlighting that a plaeo-GWC must have been located deeper than the present day GWC.

(2.8 g/cm<sup>3</sup>), the ratio of the molar mass of CO<sub>2</sub> and carbonate (0.449), and the precipitation ratios, we are able to calculate the mass of CO<sub>2</sub> leaked along the Buttes Fault (Figs 3 and 4). We find that CO<sub>2</sub> leakage recorded at individual mounds ranges from less than 1 million tonnes (Mt) to more than 10<sup>3</sup> Mt. These values can be considered as minimum values, as the erosion of the travertine mounds has not been accounted in these volume calculations.

The total amount of CO<sub>2</sub> leaked along the Buttes Fault ranges from  $1.5 \times 10^3 \pm 0.17 \times 10^3$  Mt for a precipitation ratio of 10% to  $15 \times 10^3 \pm 1.7 \times 10^3$  Mt for a precipitation ratio of 1%. Using the same approach, estimated volumes of CO<sub>2</sub> leaked into the atmosphere in the St. Johns area range from  $9 \times 10^3$  Mt to  $90 \times 10^3$  Mt (Fig. 4). This is a conservative estimate based on our calculations for travertine volumes, which are 20% lower than other published data on travertine volumes in the St. Johns Dome area<sup>27</sup> due to the implementation of high-resolution DEMs and the disregarding of erosion (see Methods for details). The leaked volumes illustrate that large quantities of CO<sub>2</sub> can migrate along fault zones to the surface and that individual pathways can induce significant loss of CO<sub>2</sub> from subsurface reservoirs.

Combining the calculated volumes of leaked CO<sub>2</sub> with the leakage history provided by the U-Th dates allows estimation of the CO<sub>2</sub> leakage rates along the Buttes fault (Fig. 4). For the three mounds where the lifespans are constrained, the leakage rates range from less than 10 tonnes of CO<sub>2</sub> per year (t/yr) to more than 10<sup>4</sup> t/yr if constant leakage rates are assumed. The total leakage rate for the Buttes Fault in case of time averaged leakage is up to  $3.6 \times 10^4$  t/yr. Note that the choice of precipitation ratio is crucial as it introduces a difference in leakage rates of one order of magnitude. Assuming constant CO<sub>2</sub> leakage over the last 420 ka, the travertine deposits above the St. Johns Dome CO<sub>2</sub> reservoir indicate overall leakage rates of up to  $2 \times 10^5$  t/yr, which is an order of magnitude lower than annual injection rates at currently operating large-scale carbon storage sites of between 0.7 and  $1.2 \times 10^6$  t/yr<sup>3</sup>.

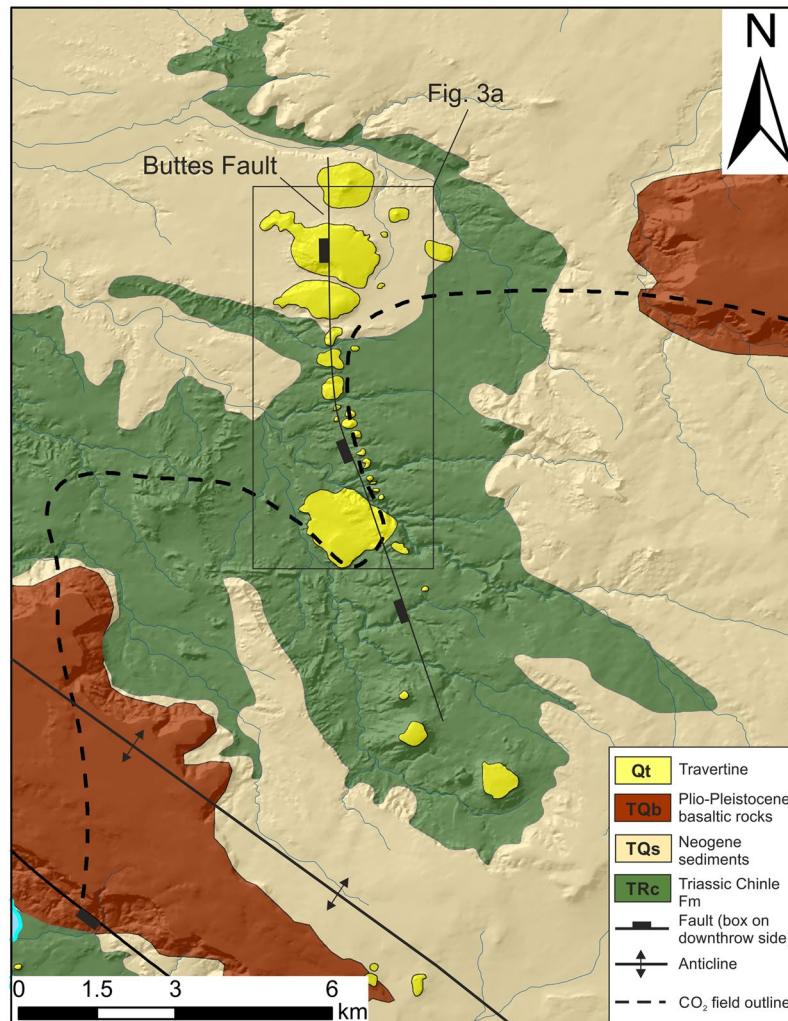
Future carbon storage sites may have significantly higher injection rates. As leakage may have occurred in pulses with hiatuses between times of travertine deposition – as reconstructed elsewhere on the Colorado Plateau<sup>12</sup> – leakage rates for short pulses with an overall duration of 10 ka were also calculated (Fig. 4). These rates are generally one order of magnitude higher than the rates for constant flow and precipitation ratios of 1% and may reach up to  $1.5 \times 10^6$  t/yr for the Buttes Fault and up to  $9 \times 10^6$  t/yr for the St. Johns Dome. However, it seems unlikely that the massive travertine deposits of both the Buttes Fault and the St. Johns Dome have formed within the short time frame of 10 ka, which is less than 3% of the overall time-span recorded by the travertine U-Th ages. Thus, leakage of CO<sub>2</sub> likely occurred at rates between the end-members outlined. It should be noted that all of these leakage rates do not take erosion into account and thus reflect minimum estimates of CO<sub>2</sub> migration volumes.

### CO<sub>2</sub> volume stored in the reservoir

To constrain the volume of CO<sub>2</sub> stored within the St. Johns Dome reservoir over the past 420 ka, a 3D subsurface model was constructed (see Methods for details). The present day reservoir retains  $\sim 1.9 \times 10^3$  Mt of CO<sub>2</sub> while a paleo-reservoir, which had a larger subsurface extent and a GWC located a minimum of 50 m deeper than the present GWC (constrained by the occurrence of travertine mounds on the surface, assuming predominately vertical buoyancy driven migration of the migrating CO<sub>2</sub>), held  $\sim 2.7 \times 10^3$  Mt of CO<sub>2</sub>. Both volumes are between one to two orders of magnitude lower than the estimated amount of CO<sub>2</sub> leaked over the last 420 ka for the whole St. Johns area, indicating constant recharging of the reservoir from a deep mantle source over its history, consistent with previous work<sup>16,30</sup>. The reconstructed leakage rates for individual mounds along the Buttes Fault represent an annual volume loss of less than 10<sup>-2</sup> to 10<sup>-6</sup>% of the total CO<sub>2</sub> retained in the reservoir, while the leakage rates for the Buttes Fault and the St. Johns Dome represent an annual volume loss of less than 0.1 to 0.001% of the total reservoir volume. These compare well to the limits stipulated by others<sup>20</sup>.

Vertical migration of fluids is often related to fracture networks that are located (1) in damage zones either side of fault cores<sup>2,23,37,38</sup>, which are often the widest at fault steps or beds<sup>39</sup>, (2) at the tip of faults<sup>40</sup>, and (3) at the crest of anticlines<sup>41</sup>. Field evidence of the travertine outcrop locations indicates that CO<sub>2</sub> leakage from the St. Johns Dome reservoir has previously occurred at all three types of fracture networks (tip of Coyote Wash Fault, damage zone of Buttes Fault, crest of Cedar Mesa anticline, Fig. 1). However, the considerably larger volumes of travertines located at the tip of the Coyote Wash Fault and along the Buttes Fault illustrate that the majority of CO<sub>2</sub> leakage occurred at fault induced fracture networks. The long lifespan of the studied travertine mounds highlights that CO<sub>2</sub> flow through fracture networks does not necessarily lead to self-sealing due to mineral precipitation as observed elsewhere<sup>24,42</sup> and high rates of flow can be sustained over geological times. Factors governing fluid flow through fracture networks at the study site could be of geomechanical nature as the continuous influx of magmatic CO<sub>2</sub> into the shallow reservoir, which is needed to sustain the high leakage rates, could increase pore pressure and potentially bring fractures closer to failure and increase the fracture permeability<sup>5,43</sup>. The paleo-reservoir described above had a thicker CO<sub>2</sub> column and pore pressures that were about 1 MPa higher compared to current reservoir pressures – possibly enough to force fractures into failure.

Importantly, whilst the St. Johns Dome has experienced a 400 ka history of large volumes of CO<sub>2</sub> leakage (up to  $9 \times 10^4$  Mt) through structural elements (faults and crest of anticlines), the average annual loss of CO<sub>2</sub> from the reservoir is <0.01% of the total reservoir volume. Annual leakage rates of <0.1% are thought to make geological carbon storage an effective tool to reduce the impact of global warming (<1,000 years)<sup>44,45</sup>, while annual leakage rates of <0.01% would significantly increase the timescale for which the application of CCS is beneficial<sup>10,46</sup>. More

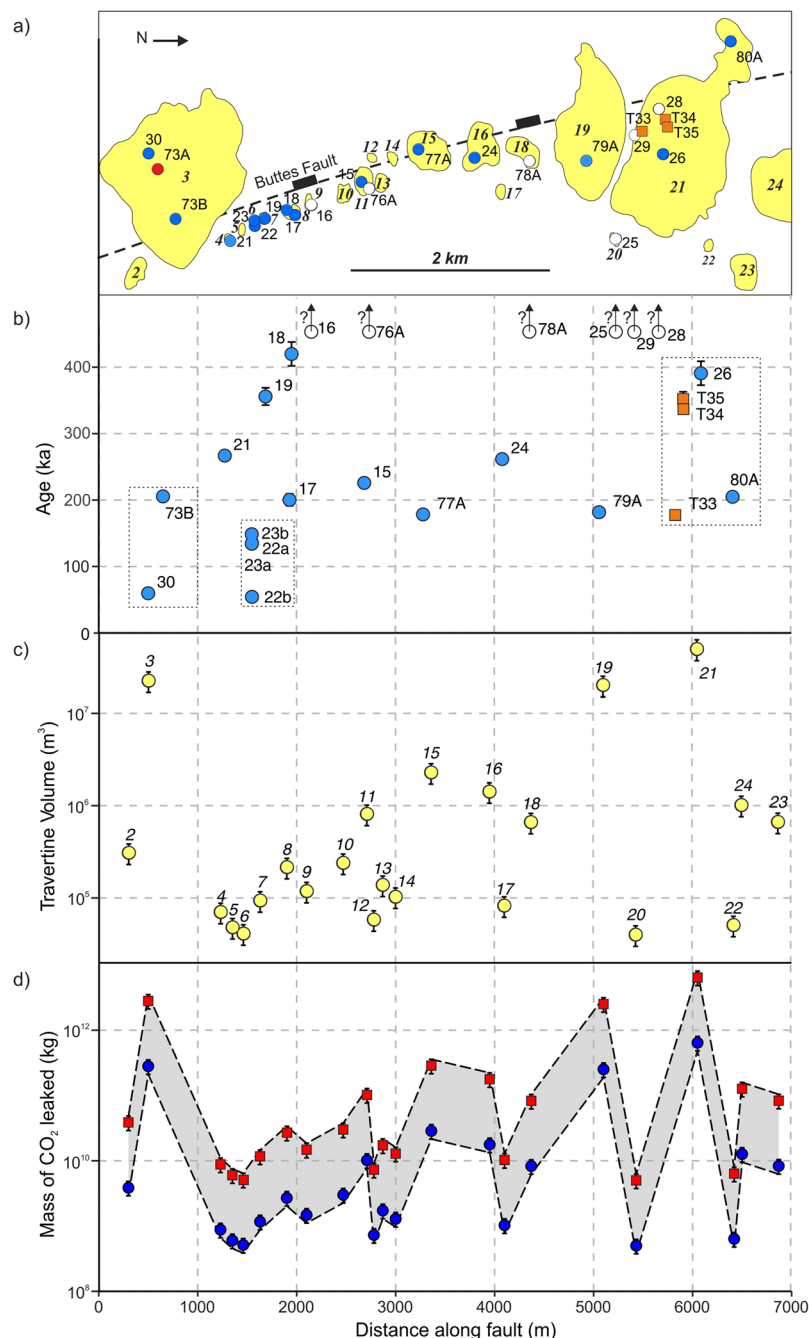


**Figure 2.** Geological map of the study area along the Buttes Fault. Note that the travertine mounds align along the fault trace. For location within the St. Johns Dome CO<sub>2</sub> field see Fig. 1a.

recent studies have shown that even high leakage rates and associated economic costs will not interfere with the effectiveness of policies for climate change mitigation<sup>47,48</sup>. This illustrates that large-scale vertical fluid migration through fault zones as found in this study does not necessarily impact the suitability of carbon storage sites. Therefore, a careful selection of storage sites is crucial and available site selection criteria<sup>15,49,50</sup> indicate, that due to the faulting connecting the subsurface reservoir with the surface and the shallow depth of the reservoir, the studied St. Johns Dome site would not be chosen for geological storage of CO<sub>2</sub>. Yet, even for this natural geological storage site that would be deemed to be of too high risk for engineered storage, CO<sub>2</sub> leakage rates are low enough to make this a viable CO<sub>2</sub> store.

While leakage along faults from CO<sub>2</sub> storage sites does not necessarily impact storage suitability of a site from a climate mitigation point of view, migration of CO<sub>2</sub> through the subsurface has the potential to negatively impact shallow potable aquifers<sup>51</sup>, fauna and flora<sup>52</sup>, and humans<sup>13</sup> on the surface. In particular the introduction of CO<sub>2</sub>-rich waters into potable aquifers is an issue, which could mobilise organic contaminants based on experimental results that show that CO<sub>2</sub> addition can potentially release toxic elements from the rock<sup>53–55</sup>. Additionally, fear of migration of CO<sub>2</sub> to the surface is the main driver of negative public opinion towards CCS and has led to the delay of storage project development<sup>56,57</sup>. While storing CO<sub>2</sub> in offshore reservoirs can address some of these issues, site monitoring and leakage detection are more difficult compared to onshore sites. Thus acceptable leakage rates along faults may be lower than the rates required for successful climate change mitigation.

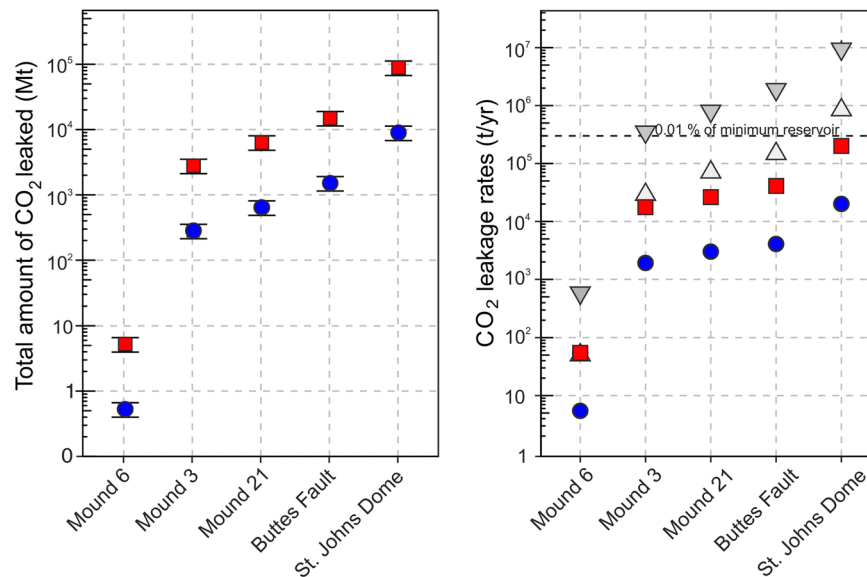
The St. Johns Dome reservoir is a very large natural storage site, which continues to accumulate CO<sub>2</sub> today, from the residue of recent volcanic activity. The reservoir has retained an at least 50 m thicker CO<sub>2</sub> column in the past and leakage vertically along geological faults enables rapid migration of CO<sub>2</sub> from the reservoir to the surface and atmosphere. Precipitation of travertine on the land surface captures 1% to 10% of leakage, and dating of these deposits with the U-Th method reveals a leakage history from 420 ka to present. Combining travertine volumes at the surface with U-Th dates suggests that time-averaged leakage rates are less than 0.01% per year, highlighting that even this faulted site can perform adequately as a CO<sub>2</sub> store.



**Figure 3.** Locations, ages, and volumes of travertine mounds and mass of leaked CO<sub>2</sub> along the Buttes Fault, St. Johns Dome. **(a)** Study area location map of travertine mounds based on DEM analysis and aerial photogrammetry, sample locations, and trace of the Buttes Fault. Blue circles = Samples with ages obtained in this study; white circles = outside dating limits; orange squares = data from Embid (2009)<sup>34</sup>. **(b)** U-Th ages of the travertine samples used in this study, error bars are smaller than the points used unless indicated, see Methods for details. Grey dotted boxes indicate samples from the same travertine mound. **(c)** Calculated volumes of the individual travertine mounds, details of the calculation method are provided in Methods. **(d)** Mass of CO<sub>2</sub> leaked based on travertine volumes; red squares have been calculated assuming 1% of leaked CO<sub>2</sub> is trapped in the precipitated travertines, blue circles assuming a precipitation ratio of 10%, see Methods for details.

## Methods

Travertine samples were obtained from 11 discrete travertine mounds along the Buttes Fault. Samples collected from the stratigraphically highest point are assumed to represent the youngest deposit. Samples were cut in half and the interior of the sample was inspected for areas with no visible indications of detrital material or alteration, which were then selected for U-Th dating. Samples of 300 mg were cut from the suitable areas and dating was



**Figure 4.** Mass of CO<sub>2</sub> leaked and CO<sub>2</sub> leakage rates. Left panel: Mass of CO<sub>2</sub> leaked based on precipitation ratios of 10% (blue circles) and 1% (red squares) for the three mounds with constrained minimum lifespans, the Buttes Fault and the whole of St. Johns Dome area, respectively. Error bars indicate the uncertainty on estimated volumes due to the accuracy of volumetric measurements. Right panel: CO<sub>2</sub> leakage rates of the same mounds and areas with time averaged leakage rates for precipitation ratios of 10% (blue circles) and 1% (red squares) as well as leakage rates over a time span of 10 ka, for precipitation rates of 10% (grey triangles) and 1% (grey inverted triangles). The dashed line indicates 0.01% of the minimum reservoir volume, and it should be noted that the majority of calculated leakage rates are less than this value. Errors are smaller than points.

carried out at the Institute for Environmental Physics at the University of Heidelberg, Germany using the methods of Douville *et al.*<sup>35</sup> and a Thermo Fisher Scientific Xseries<sup>II</sup> ICP-QMS. See supplementary information for analytical parameters and settings. Overall low to moderate <sup>232</sup>Th concentrations highlight the suitability of these samples for U-series dating (Supplementary Table 1). As <sup>230</sup>Th/<sup>232</sup>Th activity ratios of 15–20 are the upper limits for indicating the presence of non-radiogenic <sup>230</sup>Th, two samples with <sup>230</sup>Th/<sup>232</sup>Th activity ratios of <25 were discarded. Ages were calculated using an iterative Monte Carlo approach based on the disequilibrium age function from Ivanovich and Harmon<sup>58</sup>. Four samples exhibit ages outside the dating-range of the U-Th method and two fall just within the dating range but have very large errors associated with them and have thus not been used for the calculation of leakage rates (Supplementary Fig. 1, Table 1).

Travertine mound volumes along the Buttes Fault were calculated using surface areas, based on field mapping, a 1/3-arcsecond DEM, and mound thickness, measured during fieldwork (Supplementary Fig. 2, Table 2). We assume an error of ±10% in the volume calculations due to uncertainties in the morphology of the original land surface underneath the travertine mounds, resulting in difficulties in estimating mound dimensions. For the volume calculation for all travertine deposits in the St. Johns, the surface area was estimated from our results for the Buttes Monocline and the mapping work of Embid<sup>34</sup> for the remainder of the area. An average height of 25 m for all travertine deposits was assumed based on DEM analysis and field observations. The mass of leaked CO<sub>2</sub> was calculated from the mass of CO<sub>2</sub> currently stored in the travertine deposits, which is calculated using the density of travertine (assumed to be entirely CaCO<sub>3</sub>) and the molar masses of CO<sub>2</sub> (44 g/mol) and CaCO<sub>3</sub> (100.1 g/mol), using a precipitation ratio of 1% and 10% (Supplementary Table 2). Leakage rates are calculated based on the minimum lifespan given by the U-Th dating for each mound. Leakage rates for the Buttes Fault are based on a lifespan of 371 ka, whilst those for the whole of the St. Johns area are based on continuous CO<sub>2</sub> leakage over 450 ka.

The 3D model of the St. Johns area was built in Move<sup>TM</sup>, using a geological map of the area and well data (well logs, horizon markers) of 37 exploration and production wells as input data (Supplementary Table 3) and a previously published reservoir horizon map (Rauzi, 1999<sup>28</sup>). Constant thickness of the stratigraphic layers between wells was assumed. The stratigraphic layers of the model were populated with porosity and permeability values within the ranges given by Rauzi<sup>28</sup>. The current gas-water-contact is at 1494 m above sea level and is assumed to be horizontal (Supplementary Fig. 3). For the CO<sub>2</sub> volume calculations, a CO<sub>2</sub> density of 185 kg/m<sup>3</sup> (based on reservoir conditions) and a CO<sub>2</sub> saturation of 80% in the gas cap (assuming 20% of the pore space occupied by connate and residual water) was used.

## References

- Shipton, Z. K. *et al.* Analysis of CO<sub>2</sub> leakage through 'low-permeability' faults from natural reservoirs in the Colorado Plateau, east-central Utah. Geological Society, London, Special Publications **233**, 43–58 (2004).
- Shipton, Z. K. *et al.* Natural Leaking CO<sub>2</sub>-Charged Systems as Analogs for Failed Geologic Storage Reservoirs. In Carbon Dioxide Capture for Storage in Deep Geologic Formations 699–712 (Elsevier Science, 2005).
- Song, J. & Zhang, D. Comprehensive Review of Caprock-Sealing Mechanisms for Geologic Carbon Sequestration. **47**, 9–22 (2012).



4. Aminu, M. D., Nabavi, S. A., Rochelle, C. A. & Manovic, V. A review of developments in carbon dioxide storage. *Applied Energy*, <https://doi.org/10.1016/j.apenergy.2017.09.015> (2017).
5. Barton, C. A., Zoback, M. D. & Moos, D. Fluid flow along potentially active faults in crystalline rock. *Geology* **23**, 683–686 (1995).
6. Kampman, N., Bickle, M., Wigley, M. & Dubacq, B. Fluid flow and CO<sub>2</sub>–fluid–mineral interactions during CO<sub>2</sub>-storage in sedimentary basins. *Chemical Geology* **369**, 22–50 (2014).
7. Ameli, P., Elkhoury, J. E., Morris, J. P. & Detwiler, R. L. Fracture Permeability Alteration due to Chemical and Mechanical Processes: A Coupled High-Resolution Model. *Rock Mech Rock Eng* **47**, 1563–1573 (2014).
8. Bond, C. E. *et al.* The physical characteristics of a CO<sub>2</sub> seeping fault: The implications of fracture permeability for carbon capture and storage integrity. *International Journal of Greenhouse Gas Control* **61**, 49–60 (2017).
9. Hepple, R. P. & Benson, S. M. Geologic storage of carbon dioxide as a climate change mitigation strategy: performance requirements and the implications of surface seepage. *Environ Geol* **47**, 576–585 (2005).
10. Shaffer, G. Long-term effectiveness and consequences of carbon dioxide sequestration. *Nature Geosci* **3**, 464–467 (2010).
11. Burnside, N. M., Shipton, Z. K., Dockrill, B. & Ellam, R. M. Man-made versus natural CO<sub>2</sub> leakage: A 400 k.y. history of an analogue for engineered geological storage of CO<sub>2</sub>. *Geology* **41**, 471–474 (2013).
12. Kampman, N. *et al.* Pulses of carbon dioxide emissions from intracrustal faults following climatic warming. *Nature Geosci* **5**, 352–358 (2012).
13. Roberts, J. J., Wood, R. A. & Haszeldine, R. S. Assessing the health risks of natural CO<sub>2</sub> seeps in Italy. *PNAS* **108**, 16545–16548 (2011).
14. Burnside, N. M. & Naylor, M. Review and implications of relative permeability of CO<sub>2</sub>/brine systems and residual trapping of CO<sub>2</sub>. *International Journal of Greenhouse Gas Control* **23**, 1–11 (2014).
15. Mioic, J. M. *et al.* Controls on CO<sub>2</sub> storage security in natural reservoirs and implications for CO<sub>2</sub> storage site selection. *International Journal of Greenhouse Gas Control* **51**, 118–125 (2016).
16. Gilfillan, S. M. V. *et al.* The noble gas geochemistry of natural CO<sub>2</sub> gas reservoirs from the Colorado Plateau and Rocky Mountain provinces. *USA*. **72**, 1174–1198 (2008).
17. Gilfillan, S. M. V. *et al.* Solubility trapping in formation water as dominant CO<sub>2</sub> sink in natural gas fields. *Nature* **458**, 614–618 (2009).
18. Allis, R. G. *et al.* Natural CO<sub>2</sub> reservoirs on the Colorado Plateau and southern Rocky Mountains: Candidates for CO<sub>2</sub> sequestration. In American Association Petroleum Geologists meeting (2001).
19. Sathaye, K. J., Hesse, M. A., Cassidy, M. & Stockli, D. F. Constraints on the magnitude and rate of CO<sub>2</sub> dissolution at Bravo Dome natural gas field. *Proceedings of the National Academy of Sciences* **111**, 15332–15337 (2014).
20. Alcalde, J. *et al.* Quantifying geological CO<sub>2</sub> storage security to deliver on climate mitigation (2018).
21. Wilkinson, M., Gilfillan, S. M. V., Haszeldine, R. S. & Ballentine, C. J. Plumbing the Depths: Testing Natural Tracers of Subsurface CO<sub>2</sub> Origin and Migration, Utah. in Carbon dioxide sequestration in geological media - State of the science AAPG Studies (eds Grobe, M., Pashin, J. C. & Dodge, R. L.) **59**, 1–16 (2008).
22. Heath, J. E., Lachmar, T. E., Evans, J. P., Kolesar, P. T. & Williams, A. P. Hydrogeochemical Characterization of Leaking, Carbon Dioxide-Charged Fault Zones in East-Central Utah, With Implications for Geologic Carbon Storage. in Carbon Sequestration and Its Role in the Global Carbon Cycle (eds McPherson, B. J. & Sundquist, E. T.) 147–158 (American Geophysical Union, 2009).
23. Dockrill, B. & Shipton, Z. K. Structural controls on leakage from a natural CO<sub>2</sub> geologic storage site: Central Utah, USA. *Journal of Structural Geology* **32**, 1768–1782 (2010).
24. Frery, E. *et al.* Geochemical transect through a travertine mount: A detailed record of CO<sub>2</sub>-enriched fluid leakage from Late Pleistocene to present-day – Little Grand Wash fault (Utah, USA). *Quaternary International* **437**, 98–106 (2017).
25. Hancock, P. L., Chalmers, R. M. L., Altunel, E. & Çakir, Z. Travertines: using travertines in active fault studies. *Journal of Structural Geology* **21**, 903–916 (1999).
26. Berardi, G. *et al.* Growth of a Pleistocene giant carbonate vein and nearby thermogene travertine deposits at Semproniano, southern Tuscany, Italy: Estimate of CO<sub>2</sub> leakage. *Tectonophysics* **690**, 219–239 (2016).
27. Prieuwisch, A. *et al.* U-series geochronology of large-volume Quaternary travertine deposits of the southeastern Colorado Plateau: Evaluating episodicity and tectonic and paleohydrologic controls. *Geosphere* **10**, 401–423 (2014).
28. Rauzi, S. Carbon Dioxide in the St. Johns-Springerville Area, Apache County, Arizona. 22 (Arizona Geological Survey, 1999).
29. Moore, J., Adams, M., Allis, R., Lutz, S. & Rauzi, S. Mineralogical and geochemical consequences of the long-term presence of CO<sub>2</sub> in natural reservoirs: An example from the Springerville–St. Johns Field, Arizona, and New Mexico, USA. *Chemical Geology* **217**, 365–385 (2005).
30. Gilfillan, S. M. V. *et al.* He and Ne as tracers of natural CO<sub>2</sub> migration up a fault from a deep reservoir. *International Journal of Greenhouse Gas Control* **5**, 1507–1516 (2011).
31. Gilfillan, S. *et al.* The application of noble gases and carbon stable isotopes in tracing the fate, migration and storage of CO<sub>2</sub>. *Energy Procedia* **63**, 4123–4133 (2014).
32. Condit, C. D. & Connor, C. B. Recurrence rates of volcanism in basaltic volcanic fields: An example from the Springerville volcanic field. *Arizona*. **108**, 1225–1241 (1996).
33. Keating, E., Newell, D., Dempsey, D. & Pawar, R. Insights into interconnections between the shallow and deep systems from a natural CO<sub>2</sub> reservoir near Springerville, Arizona. *International Journal of Greenhouse Gas Control* **25**, 162–172 (2014).
34. Embid, E. H. U-series dating, geochemistry, and geomorphic studies of travertines and springs of the Springerville area, east-central Arizona, and tectonic implications. (The University of New Mexico, 2009).
35. Douville, E. *et al.* Rapid and accurate U–Th dating of ancient carbonates using inductively coupled plasma-quadrupole mass spectrometry. *Chemical Geology* **272**, 1–11 (2010).
36. Wefing, A.-M. *et al.* High precision U-series dating of scleractinian cold-water corals using an automated chromatographic U and Th extraction. *Chemical Geology* **475**, 140–148 (2017).
37. Faulkner, D. R. *et al.* A review of recent developments concerning the structure, mechanics and fluid flow properties of fault zones. *Journal of Structural Geology* **32**, 1557–1575 (2010).
38. Annunziatellis, A. *et al.* Gas migration along fault systems and through the vadose zone in the Latera caldera (central Italy): Implications for CO<sub>2</sub> geological storage. *International Journal of Greenhouse Gas Control* **2**, 353–372 (2008).
39. Childs, C. *et al.* A geometric model of fault zone and fault rock thickness variations. *Journal of Structural Geology* **31**, 117–127 (2009).
40. McGrath, A. G. & Davison, I. Damage zone geometry around fault tips. *Journal of Structural Geology* **17**, 1011–1024 (1995).
41. Ogata, K., Senger, K., Braathen, A. & Tveranger, J. Fracture corridors as seal-bypass systems in siliciclastic reservoir-cap rock successions: Field-based insights from the Jurassic Entrada Formation (SE Utah, USA). *Journal of Structural Geology* **66**, 162–187 (2014).
42. Patil, V. V., McPherson, B. J., Prieuwisch, A., Moore, J. & Moodie, N. Factors affecting self-sealing of geological faults due to CO<sub>2</sub>-leakage. *Greenhouse Gas Sci Technol* **7**, 273–294 (2017).
43. Min, K.-B., Rutqvist, J., Tsang, C.-F. & Jing, L. Stress-dependent permeability of fractured rock masses: a numerical study. *International Journal of Rock Mechanics and Mining Sciences* **41**, 1191–1210 (2004).
44. Enting, I. G., Etheridge, D. M. & Fielding, M. J. A perturbation analysis of the climate benefit from geosequestration of carbon dioxide. *International Journal of Greenhouse Gas Control* **2**, 289–296 (2008).

45. Stone, E. J., Lowe, J. A. & Shine, K. P. The impact of carbon capture and storage on climate. *Energy Environ. Sci.* **2**, 81–91 (2008).
46. Teng, F. & Tondeur, D. Efficiency of Carbon storage with leakage: Physical and economical approaches. *Energy* **32**, 540–548 (2007).
47. Deng, H., Bielicki, J. M., Oppenheimer, M., Fitts, J. P. & Peters, C. A. Leakage risks of geologic CO<sub>2</sub> storage and the impacts on the global energy system and climate change mitigation. *Climatic Change* **144**, 151–163 (2017).
48. Bielicki, J. M. *et al.* The Leakage Risk Monetization Model for Geologic CO<sub>2</sub> Storage. *Environ. Sci. Technol.* **50**, 4923–4931 (2016).
49. Chadwick, A. *et al.* Best practice for the storage of CO<sub>2</sub> in saline aquifers - observations and guidelines from the SACS and CO2STORE projects. (British Geological Survey, 2008).
50. Edlmann, K., Edwards, M. A., Qiao, X. J., Haszeldine, R. S. & McDermott, C. I. Appraisal of global CO<sub>2</sub> storage opportunities using the geomechanical facies approach. *Environ Earth Sci* **73**, 8075–8096 (2014).
51. Harvey, O. R. *et al.* Geochemical Implications of Gas Leakage associated with Geologic CO<sub>2</sub> Storage—A Qualitative Review. *Environ. Sci. Technol.* **47**, 23–36 (2013).
52. Ko, D., Yoo, G., Yun, S.-T. & Chung, H. Impacts of CO<sub>2</sub> leakage on plants and microorganisms: A review of results from CO<sub>2</sub> release experiments and storage sites. *Greenhouse Gases: Science and Technology* **6**, 319–338 (2016).
53. Qafoku, N. P. *et al.* Review of the impacts of leaking CO<sub>2</sub> gas and brine on groundwater quality. *Earth-Science Reviews* **169**, 69–84 (2017).
54. Hillebrand, M., Pflugmacher, S. & Hahn, A. Toxicological risk assessment in CO<sub>2</sub> capture and storage technology. *International Journal of Greenhouse Gas Control* **55**, 118–143 (2016).
55. Lions, J. *et al.* Potential impacts of leakage from CO<sub>2</sub> geological storage on geochemical processes controlling fresh groundwater quality: A review. *International Journal of Greenhouse Gas Control* **22**, 165–175 (2014).
56. L'Orange Seigo, S., Dohle, S. & Siegrist, M. Public perception of carbon capture and storage (CCS): A review. *Renewable and Sustainable Energy Reviews* **38**, 848–863 (2014).
57. Mabon, L., Shackley, S. & Bower-Bir, N. Perceptions of sub-seabed carbon dioxide storage in Scotland and implications for policy: A qualitative study. *Marine Policy* **45**, 9–15 (2014).
58. Ivanovich, M. & Harmon, R. S. Uranium-series Disequilibrium: Applications to Earth, Marine, and Environmental Sciences. (Clarendon Press, 1992).

## Acknowledgements

This work was supported by the Panacea project (European Community's Seventh Framework Programme FP7/2007-2013, Grant No. 282900) and Scottish Carbon Capture and Storage (SCCS). S.M.V.G was partially supported by a NERC Independent Research Fellowship (NE/G015163/1). We thank Midland Valley for supplying an academic license of Move™.

## Author Contributions

J.M.M., S.M.V.G. and R.S.H. conceived the study. J.M.M. and N.M.B. conducted fieldwork and collected travertine samples. J.M.M. and A.S.-R. prepared the samples for U-Th dating, and A.S.-R. and N.F. dated them. J.M.M. built the 3D model and undertook the stress analysis with contributions from S.M.V.G. and R.S.H. J.M.M. and S.M.V.G. wrote the manuscript and Supplementary Information with input from all co-authors.

## Additional Information

**Supplementary information** accompanies this paper at <https://doi.org/10.1038/s41598-018-36974-0>.

**Competing Interests:** The authors declare no competing interests.

**Publisher's note:** Springer Nature remains neutral with regard to jurisdictional claims in published maps and institutional affiliations.



**Open Access** This article is licensed under a Creative Commons Attribution 4.0 International License, which permits use, sharing, adaptation, distribution and reproduction in any medium or format, as long as you give appropriate credit to the original author(s) and the source, provide a link to the Creative Commons license, and indicate if changes were made. The images or other third party material in this article are included in the article's Creative Commons license, unless indicated otherwise in a credit line to the material. If material is not included in the article's Creative Commons license and your intended use is not permitted by statutory regulation or exceeds the permitted use, you will need to obtain permission directly from the copyright holder. To view a copy of this license, visit <http://creativecommons.org/licenses/by/4.0/>.

© The Author(s) 2019