



THE UNIVERSITY *of* EDINBURGH

Edinburgh Research Explorer

Making pots in Manaledi

Citation for published version:

Thebe, P, Griffiths, A, Molathegi, G, Wilmsen, EN & Killick, D 2018, 'Making pots in Manaledi: People, material, history' Botswana notes and records, vol. 50, pp. 44-58.

Link:

[Link to publication record in Edinburgh Research Explorer](#)

Document Version:

Peer reviewed version

Published In:

Botswana notes and records

General rights

Copyright for the publications made accessible via the Edinburgh Research Explorer is retained by the author(s) and / or other copyright owners and it is a condition of accessing these publications that users recognise and abide by the legal requirements associated with these rights.

Take down policy

The University of Edinburgh has made every reasonable effort to ensure that Edinburgh Research Explorer content complies with UK legislation. If you believe that the public display of this file breaches copyright please contact openaccess@ed.ac.uk providing details, and we will remove access to the work immediately and investigate your claim.



Making pots in Manaledi: people, material, history

Phenyo Thebe¹, Anne Griffiths², Goitseone Molatlhegi³, Edwin Wilmsen⁴, and David Killick⁵

¹Archaeology Unit, Department of History, University of Botswana; ²School of Law, University of Edinburgh; ³Citizen Entrepreneurial Development Agency;

⁴GAES Witwatersrand University;

⁵Department of Anthropology, University of Arizona

Abstract

The Manaledi clay mine is composed of two shallow, linear quarries, one producing a red clay and the other a white clay; these are mixed together in proportion of two parts red to one part white to compose a strong potting clay. The mine and clays are closely associated with village ancestors and various proscriptions must be observed during mining and potting. Archaeological survey has found Zhizo and Happy Rest sherds as well as iron smelting furnaces. Microscopic examination of these sherds along with contemporary Manaledi pots has revealed that this clay has been used by makers of pottery since the Early Iron Age about 1400 years ago and continues to be used today. We report here a brief summary of the evidence for this long history of potting and current Manaledi conceptions of their relation to the latter part of this history.

Introduction

Manaledi potters are arguably the most skilled in Tswapong today producing large pots holding as much as 50 litres of liquids as well as a variety of small functional and decorative wares. During the first phases of our continuing work in 2010 and 2014 there were 18 potters in the village, all women, of whom 5 derived their disposable income almost entirely from the craft. Among the most successful of these is Mma Gaothome Lebonetse; she and her niece Lesedi Mhaladi provided most of the information we gained about contemporary potting in the village and much of the oral history we recorded. We also learned much from the village kgosi, Mma Batlhwatse Mapulane, who is among the few woman in such a position.

Manaledi is a small settlement in the Tswapong Hills of southeastern Botswana (Fig. 1); it is rural with a population of about 300 people, one of the least populated localities in Tswapong. Although too small to be included in the Botswana Guide to Villages, it has perhaps the most elaborately ornamented kgotla in Botswana (Fig. 2). The village is home to traditional potters with known family histories of potting for as many generations as can be remembered. Rich clay deposits are about 6 kilometres from the village; on our first visit to discuss the proposed work we were told by several people that Manaledi was located specifically with relation to this clay source and ancestral villages had "always" been located in the vicinity for this reason. Manaledi potters affirm that this clay was mined by their forebears for at least five generations; they believe much longer. Thus, these oral histories project use of the Manaledi clay back to the mid-19th century.

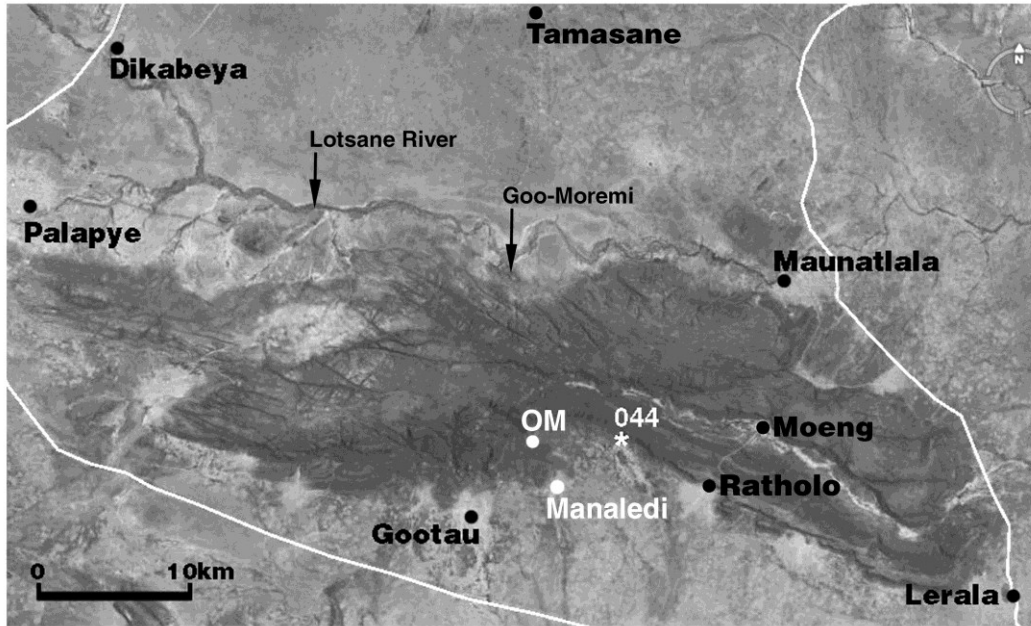


Fig. 1. Map of the Tswapong Hills with principal places marked.

Indeed, a scatter of sherds over some 1300 meters reveals a much longer history of earlier settlement. Recovered sherds suggest occupation by makers of Early Iron Age and possibly Middle Iron Age wares as well as proto-historic 18th-19th century wares clearly related to current Manaledi pottery.



Fig. 2. Manaledi kgotla with the hare totem and the kgosi's office behind it.

Contemporary Manaledi potters

Thebe first visited Manaledi in 2006 as part of our survey of potters in Botswana (Thebe et al. 2009; Wilmsen et al. 2009, Wilmsen et al. 2016). In 2010 and 2014 Griffiths interviewed Mma Lebonetse and Lesedi with the aid of Molatlhegi, who was then doing field research for her BA Honours in Archaeology at UB (Fig. 3); in 2016 Thebe and Griffiths extended these interviews to include Kgosi Mapulane.



Fig. 3. Anne and Goitse interviewing Mma Lebonetse, 2014.

Mma Lebonetse, age 57 in 2010, was born in Manaledi and consequently identifies as a Motswapong since her mother was also from the village¹. Her family, however, is not related to the Manaledi kgosi but is in the batlhanka (commoner) social-political class. She attended school up to Standard 6 in Ratholo and did Standard 7 in Maunatlala, nearby villages in Tswapong (Fig. 1). Somewhat unusually for a woman in her generation, she married after leaving school, but she has been a widow since 1990. Her husband was also from Manaledi, and the marriage was according to Tswana custom rather than introduced statutory law. She did not inherit her lolwapa from her parents but she and her late husband got it in 1984 through the then recently established Land Board; initially the lolwapa was in her husband's name but she changed it to her name after he died. She and her husband had four daughters and three sons. The eldest is an independent seamstress in Selebi-Pikwe making traditional dresses for sale, three others completed Form 5 one of whom did mechanical engineering at the University of Botswana and is now a soldier in the Botswana Defence Force and another is a plumber at the Orapa gold mine, two have managerial positions in a Selebi-Pikwe tyre company, and the youngest is still in school. This is a noteworthy rural family achievement in Botswana today. When asked if any of her children pot, she said 'Nobody, they live in the city'. Mma Lebonetse has never worked formally but ploughs a field acquired from the local Land Board which she knew to approach through meetings held at Manaledi kgotla. Her husband was the one who applied for the field and the certificate was initially in his name, but recently she changed it to her name. She has a cattle post in Manaledi which she got with her husband who was a migratory miner on the South African gold mines

and constantly bought cows with his earnings, 'so that is how they got to have it'. None of her relatives, other than her children, help with ploughing or cattle management.

Mma Lebonetse got interested in pottery and also saw it as a form of livelihood in 1977. Her mother was a potter who married very young and left her own mother to live with her husband's family in Ratholo, so learned from her in-laws. Mma Lebonetse, also separated from her mother upon marriage to return to Manaledi, learned from a woman named Gaoarelwe Kashima in Manaledi who was related neither to her nor her husband. She went through a five year apprenticeship coming daily to Gaoarelwe's place in the village; at the time she was the only person learning from her. She originally worked as Gaoarelwe's helper, transporting clay and wood for firing. She was a general helper - pounding the clay, mixing, etc. - dealing with the logistical support for all the stages of pot making; as a result, she makes pots like the woman who taught her (cf. Thebe 2016). In return for her work she was given some pots to sell for herself. Eventually, having seen the process she started making her own pots, both large water-storage/beer-brewing pots and small decorated wares, for sale. She is now considered to be the Manaledi "pottery guru" and her image is memorialised on one of the kgotla buildings. Asked when she became a potter, she replied 'in 1980' because before then she was just learning. The resources she needs for potting are few and simple: 'clay, shells [river mussel], and small round stones [granite river pebbles] for polishing, and a flat plank [piece of fruit-crate, ice cream stick, or similar] for pulling up the clay'. The shells come from the Lotsane River and the stones from Goo-Moremi Gorge ((Fig. 1). Red hematite for decorating is obtained from Chadibe at the foot of the Tswapong Formation in the Tshweneng Hills 35 kilometres to the south where it has been mined at least since the 1890s. Local calcrete is used for white pigment. Locals, and peoples from surrounding villages like Maunatlala, where there are no longer local potters, buy her wares; clay pots are good for cooking vegetables, samp, and bogobe and people still buy them for that. Dingaka also buy traditional pots from her to prepare their medicines. In 2010 in response to the question if potting is her main source of income she replied 'it is not adequate because sometimes there is a period when the pots are not bought and then there is a period when they are bought'. However, in 2014, as a sign of how times change, to the same question she responded firmly 'Yes, definitely, the market is good' and she can live on potting alone. In 2016, however, we learned that she also brews beer in several of her large pots and sells the brew in the village. A measure of her success is seen in her ability to employ people who are not potters to pound clay, 'A lot of work goes to that'.

Lesedi also says she can make a living from potting 'all year round'; although she does her pots mostly at weekends she still thinks she can make a living from them. She sells separately from Mma Lebonetse and says both her water pots and decorative pots sell well. Sometimes she works for Ipologeng to supplement her income, mostly during periods of drought. Lesedi, age 33 in 2014, was born in Manaledi and has a sister and three brothers, also in the village. She went up to Standard 7 at school. She has two children, both girls, one born in 2003 and one in 2010; the children stay with her. Like many Tswana women of her generation she has never married and is not with either of the fathers of the children (cf. Griffiths 1997). The father of her younger child provides support, but he is not the father of the elder daughter. When asked if she helps her aunt with ploughing, she replied 'No, she helps her parents'. Lesedi went through an

apprenticeship with Mma Lebonetse beginning in 2011 that lasted two years and makes the same pots as her teacher 'functional pots for water and also decorative pots'. Her sister is not interested in potting; on the other hand, a few other women started training with her but 'pulled back'. She doesn't think they have any interest. When asked why, she said 'Pot making requires patience; most were not patient enough'. This resonates with Mma Lebonetse's perception that potting 'needs a level of delicacy'.

Ancestors and clays

The clay mines lie at the foot of the Tswapong Hills, but the hills here are more than a mere topographical feature and are closely associated with Manaledi badimo. The name, Lentswe lora Mahoko - Hills of Words, expresses the dialectic between the landscape, the clay, the potters, the village, and the ancestors. An incident from our 2014 visit illustrates this relationship: there had been two years of unusually plentiful rain resulting in a dense undergrowth of tortuous spear grass and goatheads in which Mma Lebonetse lost her way while leading us the short distance between the two mines. When she recovered her bearings she told us the Hills were strong and wanted us to get to the mine because we were good people who employ villagers at generous but not envy-inducing wages, observe proper etiquette in conversation, and obtain permission from the kgosi before beginning work. In contrast, a few months earlier a geology party prospecting for manganese had been lost for more than a day despite their cell phones and GPS devices because they had not respected the Hills - that is, the ancestors. Another incident emphasizes the veneration which many Manaledi people still feel toward the Hills occurred in 2016 when Kgosi Mapulane took us to the site of the original 18th century Manaledi at the foot of Manaledi Hill at the base of which is the sacred kopje on the top of which communication with the ancestors is carried out (Fig. 4). She brought along the village ngaka responsible for calling rain who was happy to show us the kopje but most reluctant to take us to the top where scared drumming and other rituals take place. This was where the independence torch was brought by Kgosi Mapulane. The kgosi said she wanted us to see it, so he went ahead to ritually cleanse the hill before Phenyoy and I were allowed to follow. Anne had a broken toe so could not climb the hill. The Kgosi was reluctant to leave her alone as she feared that the ancestors might come down from the hill and catch her unawares saying 'you colonial daughter of Livingstone, we've got you now!'

Before collecting clay, potters must seek permission through the kgosi or ngaka who communicates with the ancestors on this kopje. During digging, there are a number of additional mostly silent communications with the ancestors. There are also a number of taboos: diggers cannot gossip or speak negatively and no noise should be made while removing the ancestors' soil, the clay. Pregnant women can collect clay but those who are menstruating cannot; menstruating women are not allowed to touch clay or go near a firing place. Women who have aborted or people who have lost their mother, children, or husbands are also not allowed to handle clay and may not go into the potting house or firing place, otherwise pots crack. As a consequence of belonging to the ancestors, the clay is a very strong soil that speaks; for example, when someone is going to die in the village a lot of pots "speak" by cracking during firing. These restrictions relating to the reproductive cycle and association with the life cycle appear to be directed to insuring the sanctity of ancestral generations. Mma Lebonetse said 'when pots crack, the soil is sick'



Fig. 4. Manaledi Hill as seen from the kgotla.

and the ancestors need attention. Appeal to ancestors is appeal to established authority; it would seem that ancestors are invoked as legitimisers of Manaledi control over the mines, the clays, and their products, pots.

Since the clay belongs to the ancestors it is an exclusive Manaledi resource; potters do not pay for the clay, they get it as members of Manaledi village. The clay mine has two quarries, 'the red one and the white one'. Mma Lebonetse and Lesedi walk the 6 kilometres to the mine together, sometimes with a group of other village potters. They dig both clays during these trips, stockpiling them separately until enough is accumulated; they then hire a donkey cart to bring the clays to the village. They go once a year, only in the winter season because the quarries are easier to work when the clay is not gummy and there is no rain. Each potter fills two drums in her lolwapa, one with red and one with white clay, and that does them for the year. A freshly cut tree branch is buried in each ore mass in the belief that the branches will lessen the disruption caused by extraction of the soils and thereby help bring rain (Molatlhegi 2010:21). When asked if all the diggers are women, the answer was 'Yes, only women. Ritualistically, it has to be only women'. A crucial question, given the heavy overburden of rocks, is: how did she know to come here for clay? To which Mma Lebonetse replied, 'It is a generational thing'; she was taught by her teacher who was taught by an earlier generation. She does not know how long people have been coming here to get clay, 'as far as memory can go'. Manaledi potters do not pot in winter, ostensibly because the clay is cold and it takes too long for pots to dry, but equally because the badimo only allow potting as well as related activities in summer. In reply to the question, 'Do other people come to get the clay?' both Mma Lebonetse and

Lesedi said 'No, we don't share the source'. Indeed, in the recent past Manaledi villagers mounted round-the-clock guard over the clay mines to prevent unauthorized use by others. In the distant past, however, the clay was freely available to all Tswapong Bapedi potters who had only to get permission from the Manaledi kgosi. Later, possibly when Babirwa settled in Tswapong, access became restricted.

The clay has such a reputation throughout the Hills villages that potters often ask for a small handful to add to their own clays believing that Manaledi clay strengthens their pots. We have not yet determined the entire reasons for this belief, but it seems to stem from the historic association of the clays with all Tswapong Bapedi ancestors. Manaledi potters do not go anywhere else to get clay, 'Only here, because it is the only good quality clay'. Clay has now become a scarce resource falling under recent minerals legislation. This year, 2016, Mma Lebonetse told us that people had been stealing clay because permission to obtain the clay was no longer being granted to potters from other areas. Indeed, when we went to the clay mines on this visit with Mma Lebonetse she found that the mines had been disturbed during a night raid and clay stolen for sale to potters in other villages. Her tools for digging had also been hidden (although one was found nearby). This shows that clay has become a resource that is sought after. Indeed, Kgosi Mapulane, who was installed in 2015, is very keen to develop Manaledi village by acquiring certificates to land for a potters centre along with facilities for making bricks to be stored in warehouses she wants to be built close to the site of old Manaledi village, close to the hills. However, this expansion of skills and distribution of resources raises questions about whether or not the enterprise is of a scope requiring an environmental impact assessment. Thebe, who has a contract archaeology business has offered to help her look into the matter to see if she can acquire a waiver. Otherwise the assessment will have to go ahead before they can get support from the Selebi-Pikwe Economic Diversification Fund. Such assessments are expensive, coming in at a cost of around 1200 Pula. The scope of the regulation is very broad and it would be a great pity if village women like Mma Lebonetse who have dug clay for decades find their access to a source of livelihood restricted.

Clays and quarries

The mine is composed of two shallow, linear quarries presently about 180m apart; the red clay quarry lies near the edge of a shallow erosional fan at the foot of the Hills while the white clay quarry is slightly up slope (Fig. 5). The area is on the western margin of the Central Zone of the Limpopo Mobile Belt, a narrow region that has attracted considerable geological attention because of its position between the Kaapvaal craton to the south and the Zimbabwe craton to the north, both massive continental formations. A substantial literature spanning more than three decades, bracketed by Key and Hutton (1976) and Kramers et al. (2011), has resulted concerned primarily with the lithology and mineral forming history of the complex. This Central Zone displays evidence of a highly complex geological history extending from the Palaeoarchean 3700 million years ago to the Palaeoproterozoic 2000 million years ago (Boshoff et al. 2006:700-701). The Zone is characterised by a wide range of rocks predominantly gneiss, iron-bearing quartzite, and various granites (van Reenen et al. 1992; Holzer et al. 1998; Kroner et al. 1999). The data show that the Central Zone underwent several pulses of heating and cooling. Mineral assemblages preserved in the rocks suggest they developed under temperature

conditions that ranged from 950°C to 330°C at pressures from 9–10 kbar² to 4–6 kbar (Hisada and Miyano 1996; Hisada et al. 2005; Van Reenen et al. 2004; Tsunogae and van Reenen 2006; Perchuk et al. 2006; Zeh et al. 2007; Rigby et al. 2008). These lithologies as recorded in the Tswapong area are shown on the Geological Survey maps (BGS 1984, 1998) where **G** designates granite and **X** designates banded quartzofeldspathic gneiss (Fig. 6).

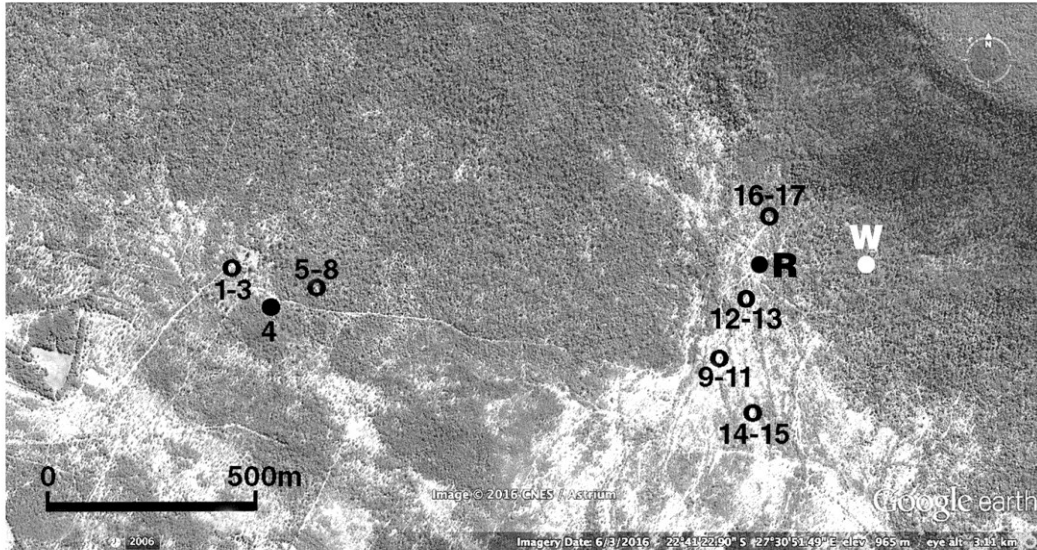


Fig. 5. Location of the mines and sherd sample sites; R marks the red mine, W marks the white mine, sample sites 1-8 have only later sherds while sites 9-17 have EIA wares.

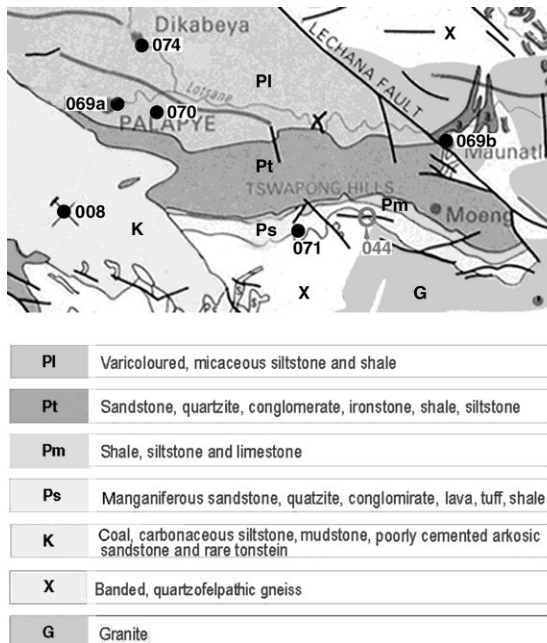


Fig. 6. Tswapong Hills section of the 1984 Geological Survey map.

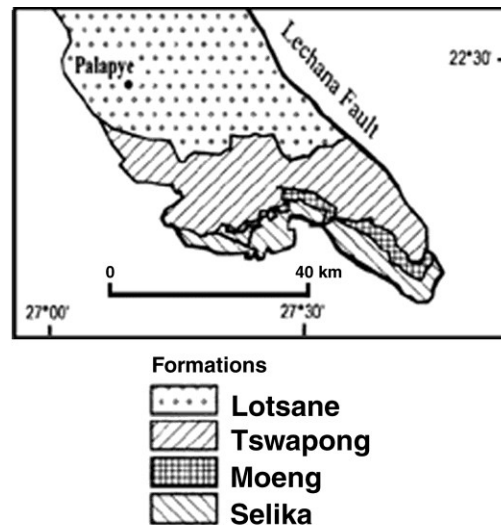


Fig. 7. Southern portion of Palapye Group.

These older rocks are overlain by later lithologies of the Palapye Group (Fig. 7), a folded sequence of sedimentary rocks deposited on the underlying granites and gneisses described above. The Palapye Group comprises five formations: Selika, Moeng, Tswapong, Lotsane, and Shoshong (Ermanovics et al. 1978; Mapeo et al. 2004:7). Only the Selika - PS and the Moeng - PM formations are relevant to our discussion; a series of ridges and narrow stream-cut gorges isolate the others from the Manaledi mine location. The Selika Formation has a conglomerate base overlain by massive iron and manganese quartzites with interbeds of shales and siltstones; indeed Tswapong is noted for its prehistoric and historic iron-working. The Moeng Formation is exposed in a narrow valley incised into the Hills; it consists of micaceous siltstones, shales, and iron quartzites with interbeds of limestones.

The mine, designated 044 on the map, is located at the intersection of exposures of three of these lithologies: quartzofeldspathic gneiss, granite, and conglomerate. The unconformity between the basement lithographies and the overlying sedimentaries is clearly demarcated in the profiles of the quarries, especially the white. This ore is in fact a pale grey grading into white tinged with patches of a very faint rose hue; the light colour suggests the ore is weathered from the quartzofeldspathic gneiss that predominates in the Central Zone. Mma Lebonetse took us to the white quarry face as it was in July

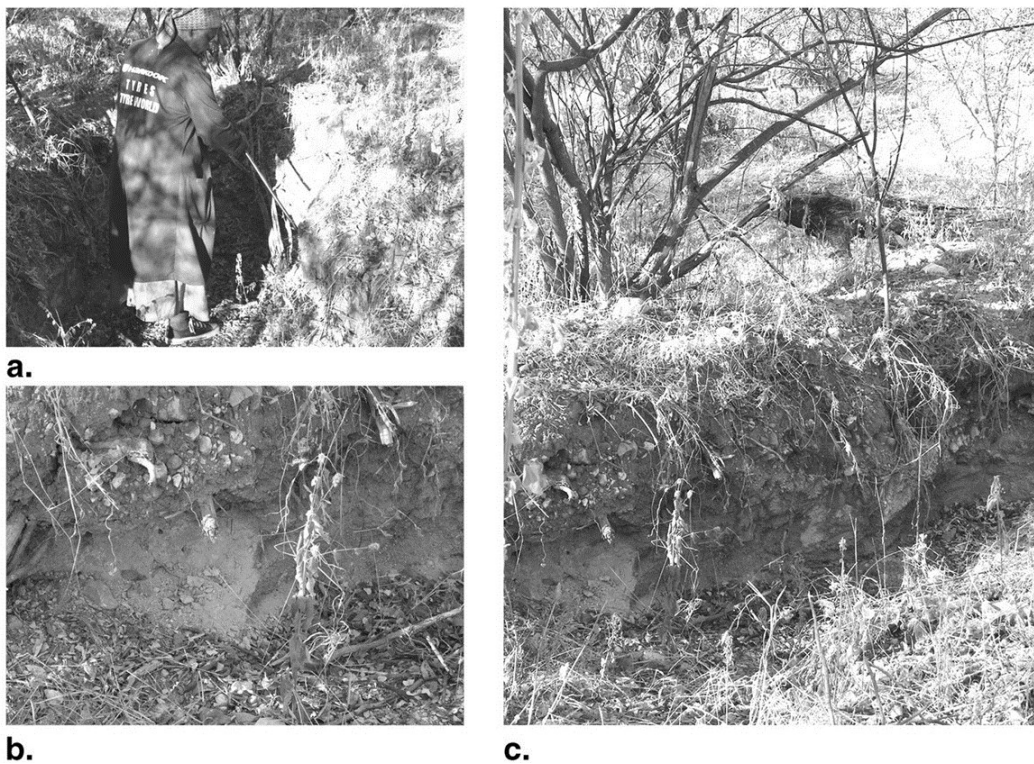


Fig. 8. The white clay mine; a. Mma Lebonetse pointing to clay stratum, b. clay stratum overlain by Moeng gravels, c. view of former mine areas.

2010 pointing with her iron mining-rod to the ore deposit under the overburden (Fig. 8a); the unconformity between the pebbly overburden and the underlying finer grained granitic ore is clearly visible (Fig. 8b), and the serpentine lineation of successive mining

activity is seen in Fig. 8c. The comparatively fine-grain structure of the overburden suggests that it originated in the Moeng Formation a tapered wedge of which cuts into the Selika at this point.

The red ore, more accurately described as a rich red-brown, is a weathering product of the granitic-granodiorites intruded into the gneiss here, the colour presumably derived from the massive iron quartzites that made the Hills a major iron working region from the Early Iron Age to recent decades. Mma Lebonetse again pointed to the ore vein under a heavy overburden of conglomerates composed mostly of cobbles, with some pebbles, of all the lithologies mentioned above (Fig. 9a). The unconformity between the ore and overburden is apparent (Fig. 9b), although somewhat obscured by cobbles thrown back into the mine trench by potters in order to expose the ore; visibly this trench extends roughly 80 metres before being obliterated by undergrowth (Fig. 9c).

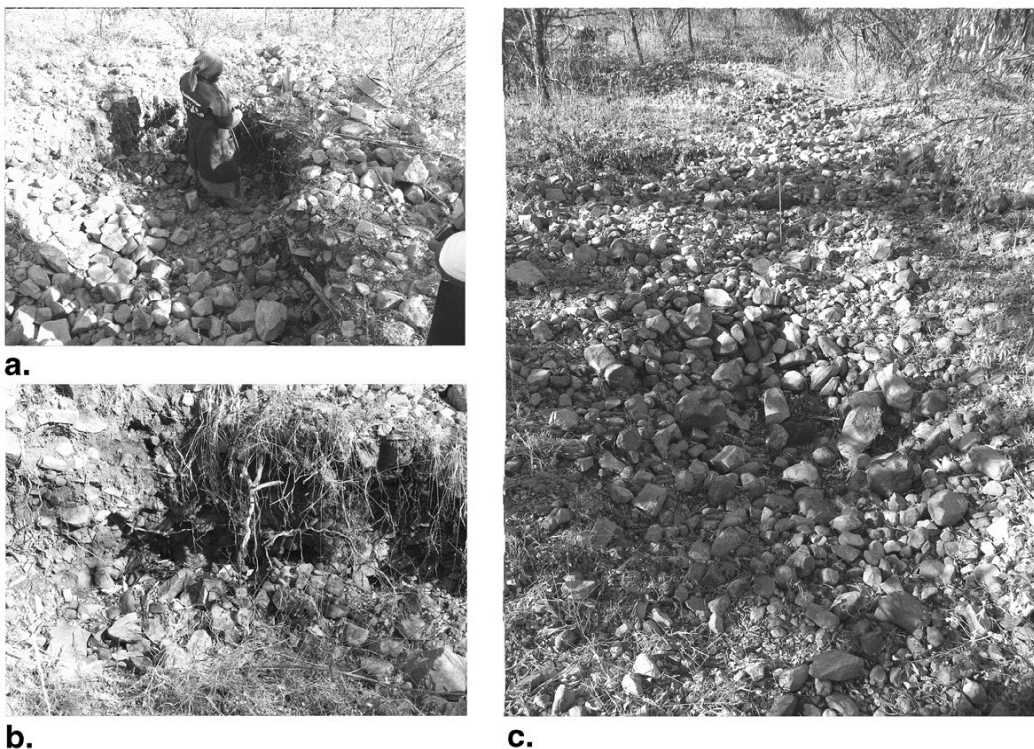


Fig. 9. The red clay mine; a. Mma Lebonetse pointing to clay stratum, b. clay stratum overlain by Silika conglomerates, c. view of former mine areas.

The red ore as mined is rich in clay with up to 90% clay composition while the white ore is relatively clay poor at 20% or less by volume; the white clay is also very coarse with larger grains sizes in the 4.0mm to 6.0mm range. Both clays are pounded individually to break-up the grains and then sifted together in proportion of two-parts red/one-part white to obtain 50-60% clay in the potting matrix with maximum grain size mostly in the 1.25mm to 2.25mm range. Pounding is done with an old kika and motse formerly used to pound sorghum and maize (Fig. 10a); today sifting is done with a wire kitchen sieve (Fig. 10b) whereas in the past flat baskets were used (Fig. 10c).

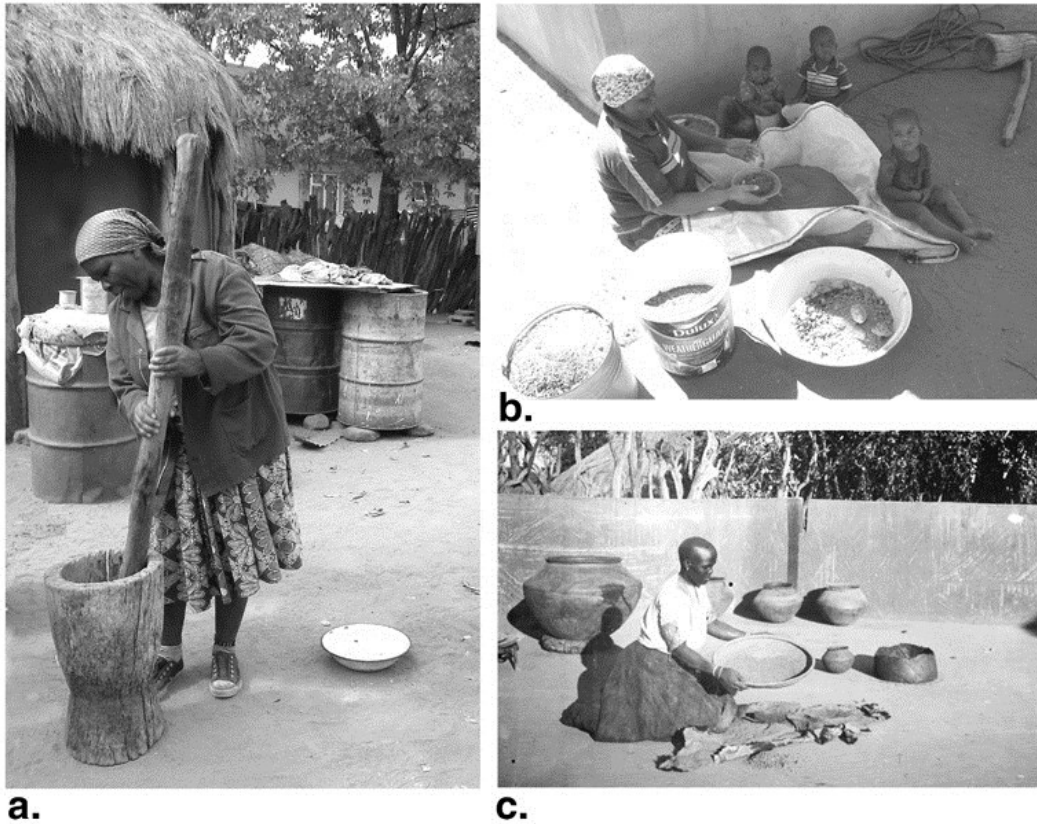


Fig. 10. a. Mma Lebonetse pounding clay, b. Mma Lebonetse sifting clay, c. Kwena potter sifting in the 1920s (photo: Duggen-Cronin).

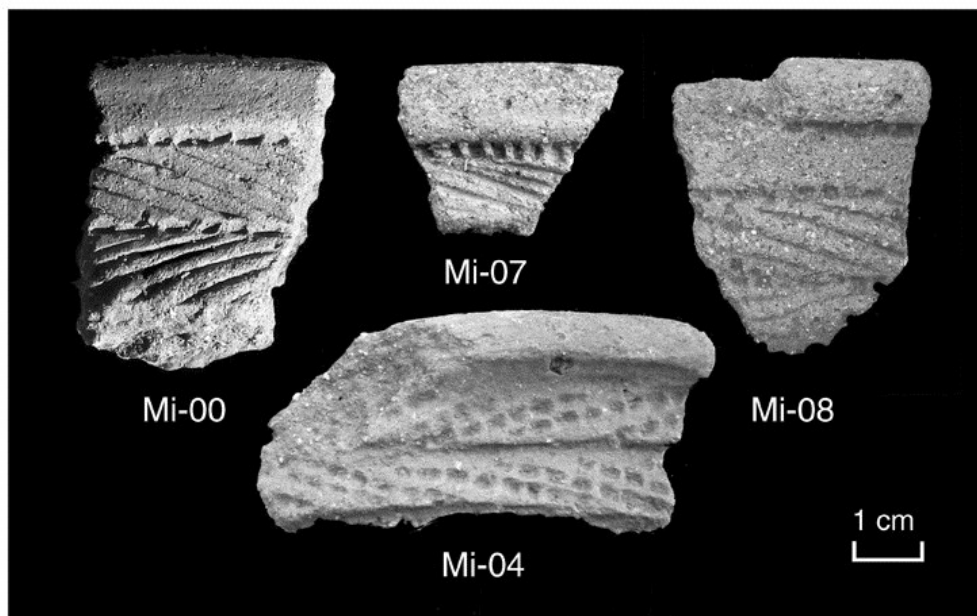
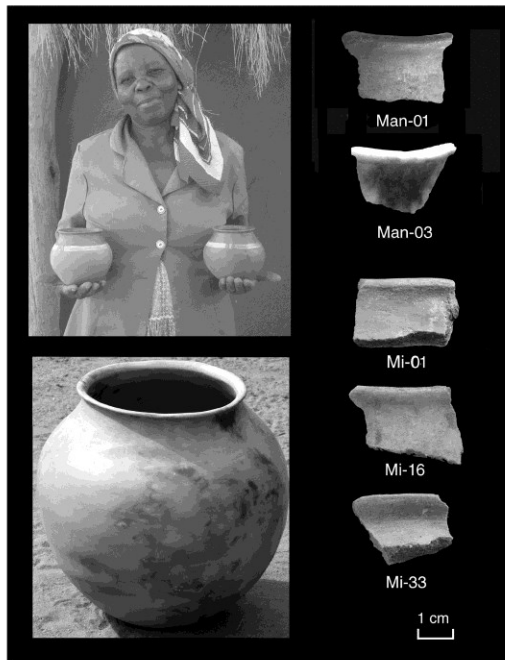


Fig. 11. Early Iron Age Sherds of Happy Rest type.



Iron Age potters must have acted accordingly; this opens a view not only to their potting behaviour but also to perishable items of their tool kit which heretofore have remained invisible. Analysis of these processes and structures thus provides a clearer view not only of the materials themselves but also integrates the role of materials in the definition and maintenance of social boundaries.

Fig. 12. Mma Lebonetse holding two of her decorative pots with a large water/beer pot below; on the left are 2 recent sherds (Man-01 & Man-03) and 3 survey sherds (Mi-01, Mi-16, Mi-33).

Pots of the past and present

Recovered surface sherds suggest occupation by makers of Early Iron Age Happy Rest (ca. AD 500-750) (Fig. 11) wares and possibly Middle Iron Age Kalundu (ca. AD 1000-1300) wares, while others include Moloko black-and-red wares (ca. AD 1300-1700) and 18th-19th century wares clearly related to current Manaledi pottery (Fig. 12). Almost 600 sherds were recovered in our surface survey, presenting evidence for substantial occupation of the Manaledi area for at least some 1400 years. The finds also include a fragment of a human figurine, unfortunately too small for specific identification, but such figurines are known to have been made by Zhizo as well as later southern African peoples. Several iron smelting sites were found as well as slag and tuyères. Two stone hut circles associated with a stone grain-bin base are perhaps the most interesting finds because they demonstrate that at least some parts of the survey area are still intact and not destroyed by wind/water erosion. A Happy Rest sherd found among the grain-bin stones suggests these huts have been preserved for more than 1000 years, a mudstone ostrich eggshell bead-grinder provides evidence for some of the finery these people wore. We have analysed clays from both mines as well as sherds from the earliest EIA Happy Rest and later proto-historic periods along with pots made by Mma Lebonetse and Lesedi and find that most of these were made from Manaledi red and white clays mixed together. We are able to determine this by examining clays and sherds with microscopic magnification to identify the minerals in the clays and sherds; this is done in Killick's archaeology laboratory at the University of Arizona (USA). We are lucky that an easily identifiable mineral called prenhite is present in Manaledi clay but not in any other Botswana clay we have examined. As prenhite is present in almost all the sherds from all periods examined we can be confident that the same Manaledi clays have been used by potters since the Early Iron Age from about 1400 years ago.

Acknowledgements

Our fieldwork at Manaledi has been funded by the Wenner-Gren Foundation (US), the Leverhume Trust (UK), and the British Academy (UK).

References

- Boshoff, R., D. Van Reenen, C. Smit, L. Perchuk, J. Kramers and R. Armstrong
2006 Geologic History of the Central Zone of the Limpopo Complex: The West Alldays Area. *The Journal of Geology* 114:699-716.
- Ermanovics, I., Key, R.M., Jones, M.T.
1978. The Palapye Group, central eastern Botswana. *Transactions of the Geological Society of South Africa* 81:61–73.
- Griffiths, A.
1997 *In the shadow of marriage: gender and justice in an African community*. Chicago: University of Chicago Press.
- Hickman, M. and J. Wakefield
1975 **Tectonic implications of new geochronologic data from the Limpopo belt at Pikwe, Botswana, southern Africa.** *Bulletin of the Geological Society of America* **86:1468-1472.**
- Hisada, K. and Miyano, T.
1996 Petrology and microthermometry of aluminous rocks in the Botswanan Limpopo Central Zone: evidence for isothermal decompression and isobaric cooling. *Journal of Metamorphic Geology* 1:183–197.
- Hisada, K., Perchuk, L.L., Gerya, T.V., Van Reenen, D.D., Paya, B.K.
2005. P–T–fluid evolution in the Mahalapye Complex, Limpopo high grade terrane, eastern Botswana. *Journal of Metamorphic Geology* 23:313–334.
- Holzer, L., Frei, R., Barton Jr., J.M., Kramers, J.D.
1998. Unravelling the record of successive high-grade events in the Central Zone of the Limpopo Belt using Pb single phase dating of metamorphic minerals. *Precambrian Research* 87:87–115.
- Key, R. and S. Hutton
1975 **The** tectonic generation of the Limpopo Mobile Belt, and a definition of its western extremity. *Precambrian Research* 3:79-90.
- Kramers, J.D., Kreissig, K., Jones, M.Q.W.
2011. Crustal heat production and style of metamorphism: a comparison between two Archean high grade provinces in the Limpopo belt, Southern Africa. *Precambrian Research* 112:149–163.
- Kroner, A., Jaeckel, P., Brandl, G., Nemchin, A.A., Pidgeon, R.T.

1999 Single zircon ages for granitoid gneisses in the Central Zone of the Limpopo belt, Southern Africa and geodynamic significance. *Precambrian Research* 93:299–337.

Mapeo, R.B.M., L.V. Ramokate, R.A. Armstrong, and A.B. Kampunzu
2004 U-Pb zircon age of the upper Palapye group (Botswana) and regional implications. *Journal of African Earth Sciences* 40:1–16.

Molatlhegi, G.
2010. An ethnoarchaeological study of pot making in Pilikwe and Manaledi villages in Tswapong. Unpublished BA Honours thesis, University of Botswana.

Perchuk, L.L., Gerya, T.V., van Reenan, D.D., Smit, C.A.
2006. P–T paths and a problem of high-temperature polymetamorphism. *Petrology* 14:117–153.

Rigby, M., H. Mouri, and G. Brandl
2008 A review of the pressure–temperature–time evolution of the Limpopo Belt: Constraints for a tectonic model. *Journal of African Earth Sciences* 50:120–132

Thebe, P., E. Wilmsen, D. Killick, and D. Rosenstein
2009 Mmopi le mmopa: making pottery in Botswana today and long ago. *Botswana Notes and Records* 41:25-38.

Thebe, P.
2016 PhD thesis research.

Tsunogae, T. and D. Van Reenen.
2006 Corundum + quartz and Mg-staurolite bearing granulite from the Limpopo belt, Southern Africa: implications for a P–T path. *Lithos* 92:576–587.

Van Reenen, D.D., Roering, C., Ashwal, L.D., de Wit, M.J.
1992 Regional geological setting of the Limpopo belt. *Precambrian Research* 55:1–5.

Van Reenen, D. D.; Perchuk, L. L.; Smit, C. A.; Varlamov, D. A.; Boshoff, R.; Huizenga, J. M.; and Gerya, T. V.
2004 Structural and *P-T* evolution of a major cross fold in the Central Zone of the Limpopo high-grade terrain, South Africa. *Journal of Petrology* 45:1413–1439.

Wilmsen, E., D. Killick, D. Rosenstein, P. Thebe, and J. Denbow
2009 The social geography of pottery in Botswana as reconstructed by optical petrography. *Journal of African Archaeology* 7:3-39.

Wilmsen, E., A. Griffiths, P. Thebe, D. Killick and G. Molatlhegi
2016 Moijabana Rocks-Pilikwe pots: the acceleration of clay formation by potters employing simple mechanical means. *Ethnoarchaeology* XX:1–21,

Zeh, A., A. Gerdes, R. Klemd, and J. Barton, Jr.

2007 Archaean to Proterozoic crustal evolution in the Central Zone of the Limpopo Belt (South Africa-Botswana): constraints from combined U-Pb and Lu-Hf isotope analyses of zircon. *Journal of Petrology* 48:1605-1639.

-
1. All the Manaledi people with whom we spoke identified themselves as Motswapong; apparently the aversion to this term recorded by Motzafi-Haller (1993) is no longer felt.
 2. A kbar is 1000 times the current atmospheric pressure on the surface of the earth at sea level (about 1kg/cm²).