



THE UNIVERSITY *of* EDINBURGH

Edinburgh Research Explorer

Microtomography of the Baltic amber tick *Ixodes succineus* reveals affinities with the modern Asian disease vector *Ixodes ovatus*

Citation for published version:

Dunlop, J, Apanaskevich, D, Lehmann, J, Hoffman, R, Füsseis, F, Ehlke, M & Zachow, S 2016, 'Microtomography of the Baltic amber tick *Ixodes succineus* reveals affinities with the modern Asian disease vector *Ixodes ovatus*' *BMC Evolutionary Biology*, vol. 16, no. 1, 203. DOI: 10.1186/s12862-016-0777-y

Digital Object Identifier (DOI):

[10.1186/s12862-016-0777-y](https://doi.org/10.1186/s12862-016-0777-y)

Link:

[Link to publication record in Edinburgh Research Explorer](#)

Document Version:

Publisher's PDF, also known as Version of record

Published In:

BMC Evolutionary Biology

General rights

Copyright for the publications made accessible via the Edinburgh Research Explorer is retained by the author(s) and / or other copyright owners and it is a condition of accessing these publications that users recognise and abide by the legal requirements associated with these rights.

Take down policy

The University of Edinburgh has made every reasonable effort to ensure that Edinburgh Research Explorer content complies with UK legislation. If you believe that the public display of this file breaches copyright please contact openaccess@ed.ac.uk providing details, and we will remove access to the work immediately and investigate your claim.



RESEARCH ARTICLE

Open Access



Microtomography of the Baltic amber tick *Ixodes succineus* reveals affinities with the modern Asian disease vector *Ixodes ovatus*

Jason A. Dunlop^{1*}, Dmitry A. Apanaskevich², Jens Lehmann³, René Hoffmann⁴, Florian Füsseis⁵, Moritz Ehlke⁶, Stefan Zachow⁶ and Xianghui Xiao⁷

Abstract

Background: Fossil ticks are extremely rare and *Ixodes succineus* Weidner, 1964 from Eocene (ca. 44–49 Ma) Baltic amber is one of the oldest examples of a living hard tick genus (Ixodida: Ixodidae). Previous work suggested it was most closely related to the modern and widespread European sheep tick *Ixodes ricinus* (Linnaeus, 1758).

Results: Restudy using phase contrast synchrotron x-ray tomography yielded images of exceptional quality. These confirm the fossil's referral to *Ixodes* Latreille, 1795, but the characters resolved here suggest instead affinities with the Asian subgenus *Partipalpiger* Hoogstraal et al., 1973 and its single living (and medically significant) species *Ixodes ovatus* Neumann, 1899. We redescribe the amber fossil here as *Ixodes (Partipalpiger) succineus*.

Conclusions: Our data suggest that *Ixodes ricinus* is unlikely to be directly derived from Weidner's amber species, but instead reveals that the *Partipalpiger* lineage was originally more widely distributed across the northern hemisphere. The closeness of *Ixodes (P.) succineus* to a living vector of a wide range of pathogens offers the potential to correlate its spatial and temporal position (northern Europe, nearly 50 million years ago) with the estimated origination dates of various tick-borne diseases.

Keywords: Arachnida, Parasitiformes, Ixodida, Parasite, Vector, Eocene, Baltic amber

Background

Ticks (Acari: Ixodida) are iconic arachnids, being obligate ectoparasites of vertebrates and often of considerable economic significance as disease vectors affecting humans and/or domestic animals. For a recent summary of their biology see Sonenshine & Roe [1]. Almost 900 living species of ticks in three families (Nutalliellidae, Argasidae and Ixodidae) are currently recognized [2] and their origins and evolution remain a topic of debate [3–5]. Key questions include whether ticks share a common ancestor with mesostigmatid mites – or a lineage thereof [6] – or alternatively with the large and rare holothyrid mites [7]. Second, when did ticks originate, given that modern taxa require terrestrial vertebrate hosts, and on which palaeocontinent did they first appear?

Recent opinions include an inferred Gondwanan (specifically South African) origin [8], in the Permian, although the same authors subsequently preferred an East African origin in the Carboniferous [9]. Other data suggest Australia, perhaps as far back as the Devonian [10]. Finally what, therefore, were their initial hosts? The monotypic and probably basal family Nutalliellidae has been reported as feeding on lizards [8], but was later shown to be a more generalist parasite [11] with, for example, subadults found on mammals like elephant shrews [12]. Note that tortoises, mammal-like reptiles, birds, and perhaps even feathered dinosaurs, would have been possible hosts for at least the Mesozoic species.

Palaeontology has the potential to contribute to this debate by recording when and where particular lineages (families, genera) were present. The oldest acariform mites are Devonian, but the oldest parasitiform mites – the clade which includes the ticks – have only been recorded since the Cretaceous. Fossil ticks are extremely

* Correspondence: jason.dunlop@mfn-berlin.de

¹Museum für Naturkunde, Leibniz Institute for Research on Evolution and Biodiversity, Invalidenstrasse 43, D-10115 Berlin, Germany
Full list of author information is available at the end of the article

rare. The oldest are two hard tick species (Ixodidae) from the Cretaceous (ca. 99 Ma) Burmese amber from Myanmar [13, 14]. Both were assigned to extinct genera; albeit not by recognized tick specialists. Burmese amber also includes a report of the living genus *Amblyomma* (Klompen in [15]), but was not described at species level. Like this find, all other fossil ticks have been assigned to extant genera, implicit of a strong degree of morphological stasis. The next oldest record is a soft tick (Argasidae: *Carios*) from Cretaceous (ca. 92 Ma) New Jersey amber [16]. This is followed by an *Ixodes* from Eocene (ca. 44–49 Ma) Baltic amber [17], which forms the focus of the present study, as well as a record of *Hyalomma* from Baltic amber [5], albeit without formal description. A putative *Ixodes* from the contemporary Green River Formation of Wyoming, USA is a *nomen dubium* [18]. Miocene (ca. 16 Ma) Dominican Republic amber has yielded an extinct species of the soft tick *Ornithodoros* [19], plus two hard ticks effectively indistinguishable from living Neotropical *Amblyomma* species [20, 21]. The youngest records are subfossils (<1 Ma) and include a *Dermacentor* from the ear of a fossilized rhinoceros from Poland (Kulczyński in [22]) and an *Ixodes* in an ancient owl pellet from Argentina [23]. In both cases the specimens could be comfortably assigned to living species.

Ixodes succineus Weidner, 1964 from Baltic amber (Fig. 1) is thus of particular significance as one of the oldest putative records of a living hard tick genus. We should also stress that numerous *Ixodes* species act as disease vectors today, thus understanding the origins of the genus is of wider parasitological interest. Including the amber fossil, Guglielmono et al. [24] recognized 244 valid *Ixodes* species and noted [see also 2] the, to some

extent controversial [25], attempts to split the genus into subtaxa. The monophyly of *Ixodes* is by no means certain and a broad division into an Australasian and a non-Australasian clade has been proposed [26]. So where does the amber fossil fit into this scheme? Baltic amber is obviously geographically from northern Europe, but has been shown to occasionally pick up Asian or even Gondwanan faunal elements. Yet both the original description of *I. succineus* [17] and subsequent commentaries [27] remarked on similarities between the amber fossil and the common, Recent, largely European species *Ixodes ricinus* Linnaeus, 1758; often known as the sheep, deer or castor bean tick. *Ixodes succineus* has been mentioned in tick catalogues [25] and refigured in popular works on amber [28–30], but a modern restudy of this important inclusion is lacking.

Fossils can be useful in constraining times of cladogenesis by acting as calibration points for molecular clocks [31, 32]. However, this requires accurate taxonomic placement, which in turn is facilitated by techniques which maximize the amount of morphological data recovered and allow the fossils to be placed using the same character sets as those applied to living genera and species. In recent years various forms of computed tomography (CT) have proved particularly well suited for imaging inclusions in amber, and have been successfully applied in acarology to both oribatid [33] and astigmatid mites [34]. Here, we offer the first CT study of a tick in amber. As well as producing extremely high-quality images of the inclusion (Fig. 2), our principal aim was to assess the fossil's affinities – specifically is it an *Ixodes* and if so how close is it to *Ixodes ricinus* or to other living species? As noted above, *Ixodes* ticks often transmit diseases. Confirming the identity of the fossil would also allow us to compare this

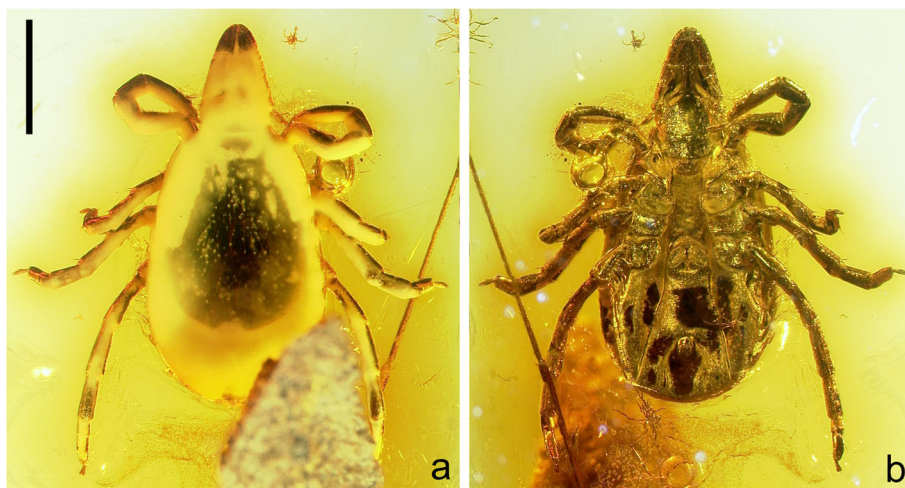
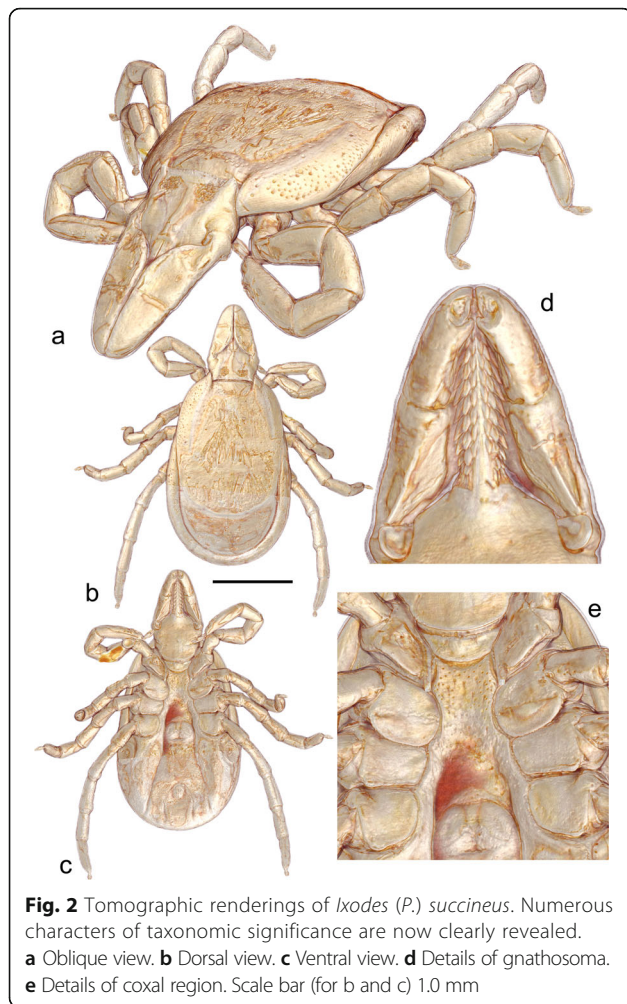


Fig. 1 *Ixodes (Partipalpigera) succineus* Weidner, 1964. A fossil tick in Eocene (44–49 Myr) Baltic amber; holotype and only known specimen GSUB I21. **a** Light microscopy image in dorsal view; note the cloudy precipitate occluding much of the dorsal surface. **b** The same in ventral view. Scale bar 1.0 mm



Eocene record with estimates of origination dates for pathogens typically carried by closely-related living tick species.

Methods

Material

The holotype and only specimen of *Ixodes succineus* derives from the legacy of a Baltic amber collection owned by the former physiology professor Otto Weiss (1871–1943) in Königsberg (now the Kaliningrad Oblast, Russia). It was purchased by the Überseemuseum Bremen, Germany in the early 1960s [17]. The geoscientific portion of this museum was transferred to the University of Bremen in 1994, thus the specimen is now held in the ‘Geowissenschaftliche Sammlung’ of the university under the inventory number GSUB I21. Baltic amber is conventionally dated to an Eocene (Lutetian) age of ca. 44–49 Ma and is thought to have been deposited in a warm forest environment [29]. The fossil was also examined under a stereomicroscope and compared both to Recent

species held in the United States National Tick Collection and the literature.

Tomography

Microtomographic data were collected at the bending magnet beam line 2-BM at the Advanced Photon Source, Argonne National Laboratory, USA. The amber specimen was scanned with 27.2 keV x-ray and imaged with a lens-coupled x-ray microscope. The microscope is composed of a Coolsnap K4 2048 × 2048 CCD camera, a 100µm LuAG:Ce scintillator, and a Zeiss 5× objective lens. The scintillator converts the amber x-ray shadow image into an optical image, and the objective lens projects the image onto the camera. The microscope has a 2.96 µm pixel size. The exposure time was 200 ms. Images were collected in transmission mode by a CCD camera behind the sample in the hutch configuration. The sample-detector distance was set to 300 mm to optimize the phase contrast which was needed to illustrate internal details of the poorly absorbing specimen; this distance being based on the evolution of the contrast in the reconstructed images. 1440 projections were acquired while the sample was rotated over 180° in steps of 0.125°. A microtomographic data set with a size of 2048x2048x1949 voxels (voxel size 2.96 µm) was reconstructed using a phase retrieval algorithm [35]. Digital visualization was achieved using ZIBAmira (<https://amira.zib.de/>). Synchrotron x-ray tomography techniques are known to run the risk of darkening the amber matrix surrounding the specimen, however no noticeable darkening was observed using the parameters listed above.

Results

Systematic palaeontology

Suborder IXODIDA Leach, 1815

Family IXODIDAE Leach, 1815

Genus *Ixodes* Latreille, 1795

Ixodes (Partipalpiger) succineus Weidner, 1964

Material

Geowissenschaftliche Sammlung Universität Bremen (GSUB) I21, holotype (Figs. 1 and 2).

Horizon and locality

Baltic amber, probably from the Kaliningrad region, Eocene (Lutetian).

Emended diagnosis

Extinct member of the subgenus *Partipalpiger* Hoogstraal, Clifford, Saito & Keirans, 1973, which can be distinguished from the single living species by a 3/3 dental formula on almost the entire hypostome (2/2 in *Ixodes ovatus* Neumann, 1899) and a moderately long posteromedian spur on coxae I (short in *Ixodes ovatus*).

Description

Female tick. Idiosoma (Figs. 2 and 3): suboval, widest at level of coxae IV; length from scapular apices to posterior body margin 0.86 mm, breadth 0.56 mm, 1.54 times as long as broad. Scutum (Fig. 2b): Elongate, outline broadly rounded, length 0.64 mm, width 0.47 mm, 1.36 times as long as broad. Lateral carinae distinct, divergent, not reaching posterior margin; cervical grooves indistinct, shallow. Genital aperture medial to posterior margin of coxae IV; genital apron lacking. Genital groove well-developed. Anal groove circular with open posterior margin. Spiracular plates (Fig. 2b): sub-circular; diameter in anteroposterior plane slightly greater than that in dorsoventral plane; length 0.10 mm, width 0.09 mm, 1.11 times as long as broad.

Gnathosoma (Fig. 2d): length from palpal apices to cornual apices dorsally 0.34 mm, width at apices of lateral projections 0.23 mm, 1.48 times as long as broad. Basis capituli (Fig. 2b): dorsally subtriangular; posterior margin nearly straight; cornua small. Basis capituli ventrally

pentagonal; with posterior margin convex; auriculae absent. Palpi (Fig. 2d): elongate, narrow; length (I–III segments) 0.26 mm, width 0.08 mm, 3.25 times as long as broad, length of segments in descending order: 2, 3, 1, 4; segment I well developed without spurs; segment II narrow proximally and gradually widening to mid-length and nearly parallel sided from mid-length to distal end; segment III laterally straight and medially converging to bluntly rounded apex. Hypostome (Fig. 2d): tapering with sharply pointed apex; arising from a medial anterior extension of basis; length 0.17 mm, width 0.05 mm, 3.4 times as long as broad; widest nearly at midlength; dental formula 3/3 throughout hypostomal length; denticles sharply pointed.

Legs: moderately long, slender. Coxae (Fig. 2e): coxae I with moderately long triangular posteromedian spur with sharply pointed apex, posterolateral spur lacking; coxae II without spurs; coxae III and IV with short triangular spur with blunt apex; coxae I–II with syncoxae; syncoxae on coxae II large, occupying posterior half of coxae. Tarsi

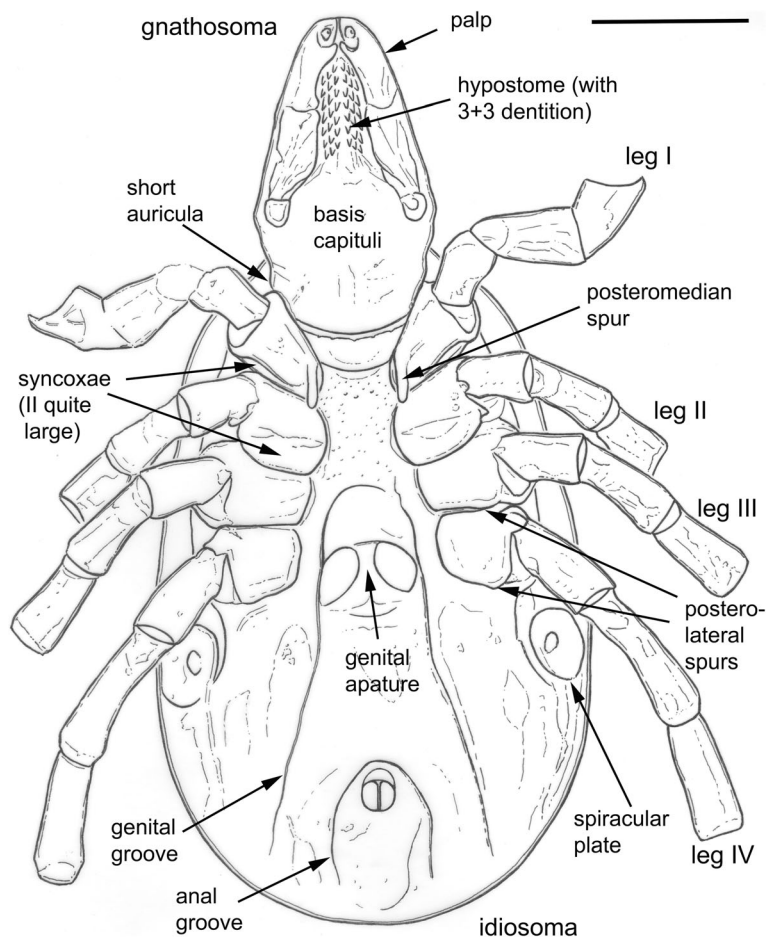


Fig. 3 Interpretative drawing of *Ixodes (P.) succineus* in ventral view, highlighting taxonomically significant characters (see text for details). Scale bar 0.5 mm

(Fig. 2a): tarsi I–IV not humped at distal end; tarsus I length 0.22 mm; tarsus IV length 0.19 mm. Male, nymph and larva unknown.

Remarks

GSUB I21 can be confirmed here both as a female fossil tick, and as the oldest unequivocal record of *Ixodes*. Based on the presence of syncoxae on coxae I and II (Figs. 2 and 3), the female of *I. succineus* most closely resembles members of the subgenera *Afrixodes* Morel, 1966, *Exopalpiger* Schulze, 1935 (including *Endopalpiger* Schulze, 1935), *Ixodes* s. str. and *Partipalpiger*. Species belonging to the *Afrixodes* subgenus – mostly distributed in the Afrotropical region and with a few species present in the Oriental region – have syncoxae present on coxae I–III and a genital apron. By contrast, the female of *I. succineus* has no syncoxae on coxae III and we were unable to find any trace of a genital apron. Most species of the subgenus *Exopalpiger*, mostly distributed in Australasian and Neotropical regions with a few species present in the Palearctic and Afrotropics, also have coxae III and IV with syncoxae, no spurs on any coxae and palpal segment I with large projections. The female of *I. succineus* has syncoxae only on coxae I and II, a well-developed postero-medial spur on coxae I and posterolateral spurs on coxae III and IV, and a palpal segment I without large projections (Figs. 2 and 3).

Females of a number of species of the subgenus *Ixodes* s. str. also have syncoxae on coxae I and II only. These species can be found in the Palearctic, Oriental, Nearctic and Neotropical zoogeographic regions and probably do not form a natural group (see Discussion). We examined all valid species of *Ixodes* s. str. and were unable to find a modern species with a combination of characters exactly matching those in the amber fossil. In *Ixodes* s. str. species the syncoxae are considerably narrower and many of them have a posterolateral spur present on coxae II and/or larger and longer auriculae. By contrast, the female of *I. succineus* has very broad syncoxae on coxae II, no spurs on coxae II and very short and blunt auriculae (Figs. 2 and 3). It is the subgenus *Partipalpiger* – containing only *Ixodes ovatus* and distributed in the Palearctic and Oriental regions from the Himalayas to Japan – which expresses a morphology most similar to the fossil in amber. Females of *I. ovatus* also have syncoxae only on coxae I and II and the syncoxae on coxae II are broad, occupying the posterior half of the coxae. Both the fossil and the extant species have very short, blunt auriculae with their apices oriented laterally. Nevertheless females of *Ixodes ovatus* can be easily distinguished from that of *I. succineus* by a 2/2 dental formula on almost the entire hypostome, as opposed to 3/3 in *I. succineus*, and a short posteromedian spur on coxae I, which is moderately long in *I. succineus* (Figs. 2 and 3).

Discussion

Affinities

Weidner's original suggestion [17] that *Ixodes succineus* is closest to *Ixodes ricinus* could not be confirmed. It seems unlikely that this common, Recent, European species is derived directly from the lineage containing the Baltic amber inclusion. We see no obvious morphological continuum from the fossil to the *Ixodes* species which inhabits the Baltic region today. The evolutionary origins of the modern sheep tick must be sought elsewhere, and in any case these ectoparasites must surely have immigrated into north–central Europe after the last glaciation. Among recent molecular phylogenies of *Ixodes* [26, 36–38] it is worth noting the proposal that the genus is not monophyletic [26], and that ixodid ticks in general originated either in Africa or Australia. Our data confirms that *Ixodes* had reached Europe by at least 49 Ma. Furthermore, Xu et al. [38] challenged the monophyly of the *Ixodes ricinus* species complex and suggested that these ticks underwent – at some stage – a rapid radiation. Perhaps this was associated with the availability of their mammalian hosts. Further studies are undoubtedly needed to unravel the history of the modern European *Ixodes* tick fauna, and fossils could be integral to this process. As has been argued for insects [39], resolving phylogenies associated with rapid radiations in deep time can be problematic. Amber fossils like *Ixodes succineus* can take on increased importance for deciphering the phylogeny of rapidly-radiating groups, as they can reflect extinct lineages which sample different portions of the original radiation.

Our microtomography results suggest instead that *Ixodes succineus* from Baltic amber is most closely related to a modern Asian species, *Ixodes ovatus*, and can potentially be assigned to the same subgenus, *Partipalpiger*. This in itself is interesting and suggests that around 50 million years ago the *Partipalpiger* lineage (or at least closely-related forms) was more widespread across the northern hemisphere but became, at some stage, extinct in Europe. *Partipalpiger* has been resolved as the sister group of the subgenus *Ixodes* (s. str.) [37] and if this is correct the latter subgenus must also date back at least ca. 50 Ma. We may note here the proposal of Filippova [40] that *Ixodes* (s. str.) dates back to the Palaeogene, with an ecological niche in mesophilic and moderately hydrophilic Cenozoic forests. An open question is whether the loss of lineages, i.e., *Partipalpiger*, from the Eocene of northern Europe also occurred tens of millions of years ago, or perhaps as recently as the Pliocene–Quaternary Ice Ages which began about ca. 2.6 Ma. Baltic amber is thought to have concurred with a warm period – the Paleocene–Eocene Thermal Maximum and Early Eocene Climatic Optimum – and is known to host a range of taxa now restricted to other biogeographical areas. Larsson [41] reviewed Baltic amber fossils belonging to lineages which survive today either in

southern Africa or in Asia. We propose that *Ixodes succineus* can be added to the latter group. Another example among parasitiform mites would be the opilioacarid genus *Paracarus* which has been recorded from Baltic amber [42], but is found today only in Kazakhstan.

Correlations with pathogen origins?

In a wider context, Poinar [43] reviewed a number of insects in amber – particularly mosquitos, sand flies and assassin bugs – which today carry medically significant pathogens, and in which these exceptionally preserved inclusions even retained direct evidence for the protozoans responsible for infection. In a similar vein, Poinar [44] claimed to have observed rickettsial-like bacteria in one of the Burmese amber ticks, implying a minimum age of ca. 99 million years for this host–bacterial association. Whether these structures are genuine internal features or, e.g., an artefact of a reticulate surface ornament under particular conditions of illumination needs to be checked against the original material. This was, unfortunately, not available for loan. Potential pathogens cannot be resolved in our Baltic amber tick, but like a number of *Ixodes* species, its closest living relative *I. ovatus* is medically significant. For a detailed account of its biology see Hoogstraal et al. [45]. *Ixodes ovatus* has been recorded as a vector for the *Borellia* spirochetes responsible for Lyme borreliosis (LB) [46], for the *Babesia* protozoans responsible for babesiosis [47, 48], the bacteria responsible for anaplasmosis, ehrlichiosis and rickettsia-related infections [49, 50], and for the tick-borne encephalitis virus (TBEV) [51].

It is thus interesting to speculate whether the closely-related amber species was also a significant (mammalian) disease vector? Mammals, of course, underwent an adaptive radiation in the aftermath of the end-Cretaceous mass extinction. De la Fuente et al. [52] reviewed the role of (living) ticks as vectors, and our present revision of *Ixodes* (*P.*) *succineus* places a potential host in the Eocene of Europe. It may be instructive to compare this date to estimates of origination for the protozoa, bacteria or viruses which are intimately associated either with *Ixodes*, or with hard ticks in general. For example, Florin-Christensen & Schnittger [31] discussed the evolutionary history of piroplasmids (including *Babesia*) and ticks. Molecular clock data suggests that piroplasmids in general originated ca. 57 Ma – i.e., just prior to the age of our fossil – but that the radiation into subgroups, including the babesids, is somewhat younger: ca. 25 Ma. Taking the oldest Mesozoic ticks as a starting point, these authors suggested that piroplasmids presumably entered a tick host at some point between the Cretaceous and the Oligocene.

Lyme disease is strongly associated with *Ixodes* species today, although it remains to be resolved whether the

spirochetes entered ticks only once, or on multiple occasions. As reviewed by Fukunaga et al. [37] the phylogeny of the *Borellia* pathogen responsible is quite concordant with the phylogeny of the *Ixodes* ticks which host them: for example *I. ovatus* today hosts *B. japonica*. When the ticks, and their pathogens, radiated is another question. Margos et al. [53] noted that a molecular clock for the evolution of the housekeeping genes of the causative agent in humans, *B. burgdorferi* – which is strongly associated with the *I. ricinus* complex – has not yet been established. Nevertheless, these authors suggested that its origins were in Europe and that various lineages of this pathogen may have separated a few (unspecified) millions of years ago. The TBEV virus may also be a fairly recent acquisition. It has been hypothesised that these flaviviruses crossed over from argasid ticks on seabirds into ixodid ticks in modern Eurasian forests, or that its emergence may be associated with climate change at the end of the last glaciation [54].

Further data is available for bacterial infections [55, 56] and both studies inferred a Jurassic–Cretaceous split into *Rickettsia* bacteria associated with protozoans and a lineage more typical for hematophagous arthropods. This would be consistent with Poinar's Burmese amber tick record (ca. 99 Ma) and his putative *Rickettsia*-like inclusions. Interestingly, both these *Rickettsia* molecular studies also reported a rapid radiation of this bacterial genus among blood-feeding taxa going back to ca. 50–65 Ma; more or less contemporary with the Baltic amber fossil but also, of course, with a radiation of possible mammalian hosts. Similarly, two medically significant strains of *Anaplasma* (*A. marginale* and *A. phagocytophilum*) were dated [57] as having split ca. 43–78 Ma.

Conclusions

We cannot prove that *Ixodes succineus* carried bacteria, or other pathogens, but our study does confirm that at least one anatomically modern species of *Ixodes* was already present during the Eocene. It is closely related to a modern disease vector and can be placed in the same subgenus (*Partipalpiger*) as the Asian tick *Ixodes ovatus*. Thus the amber fossil may have acted as a vector too. Molecular estimates of origination dates suggest that at least piroplasmids and the *Rickettsia* and *Anaplasma* bacteria should have been present around 50 million years ago as well. This begs a further question whether evolution and radiation events among the pathogens are more closely tied to the ticks – as one of their carriers – or to the mammals as their principal hosts and reservoirs.

Additional file

Additional file 1: *Ixodes succineus* Weidner, 1964. (MP4 137020 kb)

Acknowledgments

We appreciate technical support by M. Krogmann (Bremen), and thank P. Selden (Kansas) for useful discussions about fossil arachnids. R. Garwood and two anonymous reviewers provided valuable comments on the typescript. Use of the Advanced Photon Source, an Office of Science User Facility operated for the U.S. Department of Energy (DOE) Office of Science by Argonne National Laboratory, was supported by the U.S. Department of Energy under Contract No. DE-AC02-06CH11357. DAA's part of this project was partially supported by Grant Number R15AI096317 from the National Institute of Allergy and Infectious Diseases. The content is the sole responsibility of the authors and does not necessarily represent the official views of the National Institute of Allergy and Infectious Diseases or the National Institutes of Health.

Availability of data and materials

The original holotype specimen of *Ixodes succineus* is available from the University of Bremen (see Methods). The video reconstruction is available as Additional file 1.

Authors' contributions

JAD and DAA wrote most of the text and descriptions, with contributions to the specimen and locality data by JL and RH. Tomographic images and the reconstruction were produced by FF, ME, SZ, XX and RH who also wrote the methods section. All authors contributed intellectually to the paper.

Competing interests

The authors declare that they have no competing interests.

Consent for publication

Not applicable.

Ethics approval and consent to participate

Not applicable.

Author details

¹Museum für Naturkunde, Leibniz Institute for Research on Evolution and Biodiversity, Invalidenstrasse 43, D-10115 Berlin, Germany. ²United States National Tick Collection, The James H. Oliver, Jr. Institute for Coastal Plain Science, Georgia Southern University, Statesboro, GA 30460-8056, USA. ³Faculty of Geosciences, University of Bremen, D-28357 Bremen, Germany. ⁴Department of Earth Sciences, Ruhr-Universität Bochum, Institute of Geology, Mineralogy, and Geophysics, D-44801 Bochum, Germany. ⁵School of Geosciences, The University of Edinburgh, Grant Institute, King's Buildings, West Mains Road, Edinburgh EH9 3JW, UK. ⁶Medical Planning Group, Zuse Institute Berlin, Department Visualization and Data Analysis, D-14195 Berlin, Germany. ⁷Advanced Photon Source, Argonne National Laboratory, 9700 S. Cass Ave, Lemont, IL 60439, USA.

Received: 20 May 2016 Accepted: 29 September 2016

Published online: 10 October 2016

References

- Sonenshine D, Roe RM. (editors) *Biology of Ticks*, 2nd Edition. Bands 1–2. Oxford: Oxford Univ. Press; 2013.
- Guglielmone AA, Robbins RG, Apanaskevich DA, Petney TN, Estrada-Peña A, Horak IG, Shao R, Barker SC. The Argasidae, Ixodidae and Nuttalliellidae (Acari: Ixodida) of the world: a list of valid species names. *Zootaxa*. 2010;2528:1–28.
- Klompen JSH, Black IV WC, Keirans JE, Oliver Jr JH. Evolution of ticks. *Annu Rev Entomol*. 1996;41:141–61.
- Baker SC, Murrell A. Phylogeny, evolution and historical zoogeography of ticks: a review of recent progress. *Exp Appl Acarol*. 2002;28:55–68.
- De la Fuente J. The fossil record and the origin of ticks (Acari: Parasitiformes: Ixodida). *Exp Appl Acarol*. 2003;29:331–44.
- Karg W, Schorlemmer A. Origin and classification of the Ixodidae (ticks) within the Parasitiformes Reuter 1909 (Acarina). *Acarologia*. 2008;48:123–34.
- Klompen H. Holothyrids and ticks: new insights from larval morphology and DNA sequencing, with the description of a new species of *Diplothyris* (Parasitiformes: Neothyridae). *Acarologia*. 2010;50:269–85.
- Mans BJ, de Klerk D, Pienaar R, Latif AA. *Nuttalliella namaqua*: a living fossil and closest relative to the ancestral tick lineage: implications for the evolution of blood-feeding in ticks. *PLoS One*. 2011;6(8):e23675.
- Mans BJ, de Klerk D, Pienaar R, Castro MH, Latif AA. The mitochondrial genomes of *Nuttalliella namaqua* (Ixodoidea: Nuttalliellidae) and *Argas africanus* (Ixodoidea: Argasidae): estimation of divergence dates for the major tick lineages and reconstruction of ancestral blood-feeding characteristics. *PLoS One*. 2012;7(11):e4946.
- Barker SC, Walker AR, Campelo D. A list of 70 species of Australian ticks; diagnostic guides to and species account of *Ixodes holocyclus* (paralysis tick), *Ixodes cornuatus* (southern paralysis tick) and *Rhipicephalus australis* (Australian cattle tick); and consideration of the place of Australia in the evolution of ticks with comments on four controversial ideas. *Int J Parasitol*. 2014;44:941–53.
- Mans BJ, de Klerk D, Pienaar R, Latif AA. The host preferences of *Nuttalliella namaqua* (Ixodoidea: Nuttalliellidae): a generalist approach to surviving multiple host-switches. *Exp Appl Acarol*. 2014;62:233–40.
- Hoffmann S, Horak IG, Bennett NC, Luterhann H. Evidence for interspecific interactions in the ectoparasite infracommunity of a wild mammal. *Parasit Vectors*. 2016;9(58):1–11.
- Poinar Jr GO, Brown AE. A new genus of hard ticks in Cretaceous Burmese amber (Acari: Ixodida: Ixodidae). *Syst Parasitol*. 2003;54:199–205.
- Poinar Jr GO, Buckley R. *Compluriscutula vetulum* (Acari: Ixodida: Ixodidae), a new genus and species of hard tick from Lower Cretaceous Burmese Amber. *Proc Entomol Soc Wash*. 2008;110:445–50.
- Grimaldi DA, Engel MS, Nascimbene PC. Fossiliferous Cretaceous amber from Myanmar (Burma): its rediscovery, biotic diversity, and paleontological significance. *Am Mus Novit*. 2002;3361:1–71.
- Klompen H, Grimaldi D. First Mesozoic record of a parasitiform mite: a larval argasid tick in Cretaceous amber (Acari: Ixodida: Argasidae). *Ann Entomol Soc Am*. 2001;94:10–5.
- Weidner H. Eine Zecke, *Ixodes succineus* sp. n., im baltischen Bernstein. *Veröffent Übersee-Mus Bremen*. 1964;3:143–51.
- Dunlop JA. The fate and status of the supposed fossil tick *Ixodes tertiaris* Scudder, 1885. *Acarologia*. 2011;51:399–404.
- Poinar Jr GO. First fossil soft tick, *Ornithodoros antiquus* n. sp. (Acari: Argasidae) in Dominican amber with evidence of their mammalian host. *Experientia Basel*. 1995;51:584–7.
- Lane RS, Poinar Jr GO. First fossil tick (Acari: Ixodidae) in New World amber. *Int J Acarol*. 1986;12:75–8.
- Keirans JE, Lane RS, Cauble R. A series of larval *Amblyomma* species (Acari: Ixodidae) from amber deposits in the Dominican Republic. *Int J Acarol*. 2002;28:61–6.
- Schille F. Entomologie aus der Mammut- und Rhinoceros-Zeit Galiziens. *Entomol Z*. 1916;30:42–3.
- Sanchez JP, Nava S, Lareschi M, Ortiz PE, Guglielmone AA. Finding of an ixodid tick inside a Late Holocene owl pellet from northwestern Argentina. *J Parasitol*. 2010;96:820–2.
- Guglielmone AA, Nava S. Names for Ixodidae (Acari: Ixodoidea): valid, synonyms, *incertae sedis*, *nomina dubia*, *nomina nuda*, *lapsus*, incorrect and suppressed names— with notes on confusions and misidentifications. *Zootaxa*. 2014;3767:1–256.
- Camicas JL, Hervy J-P, Adam F, Morel PC. Les tiques du monde. *Nomenclature, stades décrits, hôtes, répartition* (Acarida, Ixodida). Paris: Orstom; 1998.
- Klompen JSH, Black IV WC, Keirans JE, Norris DE. Systematics and biogeography of hard ticks, a total evidence approach. *Cladistics*. 2000;16:79–102.
- Guglielmone AA, Robbins RG, Apanaskevich DA, Petney TN, Estrada-Peña A, Horak IG. Comments on controversial tick (Acari: Ixodida) species names and species described or resurrected from 2003 to 2008. *Exp Appl Acarol*. 2009;48:311–27.
- Weitschadt W. Zecken im Bernsteinwald – wahre Raritäten. *ImpfDialog*. 2004;4:11–2.
- Wichard W, Weitschadt W. Im Bernsteinwald. Gebrüder Gerstenberg: Hildersheim; 2005.
- Lehmann J. Fossile Zecke im baltischen Bernstein. *Fossilien*. 2007;24:226–8.
- Florin-Christensen M, Schnittiger L. Piroplasmids and ticks: a long-lasting intimate relationship. *Front Biosci*. 2009;14:3064–73.
- Gou H, Guan G, Liu A, Ma M, Chen Z, Ren Q, Li Y, Yang J, Yin H, Luo J. Coevolutionary analyses of the relationships between piroplasmids and their hard tick hosts. *Ecol Evol*. 2013;3:2985–93.
- Heethoff M, Helfen L, Norton RA. Description of *Neoliodes dominicus* n. sp. (Acari, Oribatida) from Dominican amber, aided by synchrotron X-ray microtomography. *J Paleontol*. 2009;83:153–9.

34. Dunlop JA, Wirth S, Penney D, McNeil A, Bradley RS, Withers PJ, Preziosi RF. A minute fossil phoretic mite recovered by phase-contrast X-ray computed tomography. *Biol Lett*. 2012;8:457–60.
35. Paganin D, Mayo SC, Gureyev TE, Miller PR, Wilkins SW. Simultaneous phase and amplitude extraction from a single defocused image of a homogeneous object. *J Microsc*. 2002;206:33–40.
36. Caporale DA, Rich SM, Spielman A, Telford III SR, Kocher TD. Discriminating between *Ixodes* ticks by means of mitochondrial DNA sequences. *Mol Phylogenet Evol*. 1995;4:361–5.
37. Fukunaga M, Yabuki M, Hamase A, Oliver Jr JH, Nakao M. Molecular phylogenetic analysis of ixodid ticks based on the ribosomal DNA spacer, internal transcribed spacer 2, sequences. *J Parasitol*. 2000;86:38–43.
38. Xu G, Fang QQ, Keirans JE, Durden LA. Molecular phylogenetic analyses indicate that the *Ixodes ricinus* complex is a paraphyletic group. *J Parasitol*. 2003;89:452–7.
39. Whitfield JB, Kjer KM. Ancient rapid radiations of insects: Challenges for phylogenetic analysis. *Ann Rev Entomol*. 2007;53:449–72.
40. Filippova NA. Ixodid ticks of the subfamily Ixodinae. *Fauna of the USSR, Arachnida*, Vol. 4, issue 4. (Nauka Publishing House, 1977).
41. Larsson SG. Baltic amber—a paleobiological study. *Entomograph*. 1978;1:1–192.
42. Dunlop JA, Wunderlich J, Poinar Jr GO. The first fossil opilioacariform mite (Acari: Opilioacariformes) and the first Baltic amber camel spider (Solifugae). *Trans R Soc Edinburgh: Earth Sci*. 2004;94:261–73.
43. Poinar Jr GO. The origin of insect-borne human diseases as revealed in amber. *Am Entomol*. 2011; Fall 2011:170–178.
44. Poinar Jr GO. Rickettsial-like cells in the Cretaceous tick, *Cornupalpatum burmanicum* (Ixodida: Ixodidae). *Cret Res*. 2015;52:623–7.
45. Hoogstraal H, Clifford CM, Saito Y, Keirans JE. *Ixodes (Partipalpie) ovatus* Neumann, subgen. nov. identity hosts, ecology and distribution (Ixodoidea: Ixodidae). *J Med Entomol*. 1973;10:157–64.
46. Miyamoto K, Nakao M, Uchikawa K, Fujita H. Prevalence of Lyme borreliosis spirochetes in ixodid ticks of Japan, with special reference to a new potential vector, *Ixodes ovatus* (Acari: Ixodidae). *J Med Entomol*. 1992;29:216–20.
47. Yano Y, Saito-Ito A, Anchalee D, Takada N. Japanese *Babesia microti* cytologically detected in salivary glands of naturally infected tick *Ixodes ovatus*. *Microbiol Immunol*. 2005;49:891–7.
48. Zamato-Niikura A, Tsuji M, Qiang W, Nakao M, Hirata H, Ishihara C. Detection of two zoonotic *Babesia microti* lineages, the Hobetsu and U.S. lineages, in two sympatric tick species, *Ixodes ovatus* and *Ixodes persulcatus*, respectively, in Japan. *Appl Environ Microbiol*. 2012;78:3424–30.
49. Ohashi N, Inayoshi M, Kitamura K, Kawamori F, Kawaguchi D, Nishimura Y, Naitou H, Hiroi M, Masuzawa T. *Anaplasma phagocytophilum*-infected ticks, Japan. *Emerg Infect Dis*. 2005;11:1780–3.
50. Munderloh UG, Silverman DJ, MacNamara KC, Ahlstrand GG, Chatterjee M, Winslow GM. *Ixodes ovatus* Ehrlichia exhibits unique ultrastructural characteristics in mammalian endothelial and tick-derived cells. *Ann N Y Acad Sci*. 2009;1166:112–9.
51. Takeda T, Ito T, Chiba M, Takahashi K, Niioka T, Takashima I. Isolation of tick-borne encephalitis virus from *Ixodes ovatus* (Acari: Ixodidae) in Japan. *J Med Entomol*. 1998;35:227–41.
52. De la Fuente J, Estrada-Pena A, Venzal JM, Kocan KM, Sonenshine DE. Overview: ticks as vectors of pathogens that cause disease in humans and animals. *Front Biosci*. 2008;13:6938–46.
53. Margos G, Gatewood AG, Aanensen DM, Hanincová K, Terekhova D, Vollmer SA, Cornet M, Piesman J, Donaghy M, Bormane A, Hurn MA, Feil EJ, Fish D, Casjens S, Wormser GP, Schwartz I, Kurtenbach K. MLST of housekeeping genes captures geographic population structure and suggests a European origin of *Borrelia burgdorferi*. *Proc Natl Acad Sci U S A*. 2008;105:8730–5.
54. Subbotina EL, Loktev VB. Molecular evolution of tick-borne encephalitis and Powassan viruses. *Mol Biol*. 2012;46:75–84.
55. Stothard DR, Fuerst PA. Evolutionary analysis of the spotted fever and typhus groups of *Rickettsia* using 16S rRNA gene sequences. *Syst Appl Microbiol*. 1995;18:52–61.
56. Weinert LA, Werren JH, Aebi A, Stone GN, Jiggins FM. Evolution and diversity of *Rickettsia* bacteria. *BMC Biol*. 2009;7:6.
57. Foley J, Nieto NC, Foley P, Teglas MB. Co-phylogenetic analysis of *Anaplasma phagocytophilum* and its vectors, *Ixodes* spp. ticks. *Exp Appl Acarol*. 2008;45:155–70.

Submit your next manuscript to BioMed Central and we will help you at every step:

- We accept pre-submission inquiries
- Our selector tool helps you to find the most relevant journal
- We provide round the clock customer support
- Convenient online submission
- Thorough peer review
- Inclusion in PubMed and all major indexing services
- Maximum visibility for your research

Submit your manuscript at
www.biomedcentral.com/submit

