

RESEARCH ARTICLE

Open Access

Long-term renal outcome in patients with malignant hypertension: a retrospective cohort study

Fouad Amraoui^{1*†}, Sarah Bos^{1†}, Liffert Vogt² and Bert-Jan van den Born¹

Abstract

Background: Malignant hypertension is frequently complicated by renal insufficiency. Although the survival of this hypertensive emergency has improved, recent data on renal outcome and its predictors are lacking. We assessed renal outcome and its predictors in patients with malignant hypertension.

Methods: Retrospective analysis of patients admitted with malignant hypertension in Amsterdam, the Netherlands between August 1992–January 2010. Follow-up data on vital status, renal function and blood pressure (BP) were obtained from the outpatient department and from general practitioners. The primary composite endpoint was end-stage renal disease (ESRD) defined as the start of kidney replacement therapy (KRT) or $\geq 50\%$ decline of estimated glomerular filtration rate (eGFR). The secondary endpoint was all cause mortality.

Results: A total of 120 patients admitted with malignant hypertension were included. After a median follow-up period of 67 months (IQR 28 to 108 months) the primary endpoint was reached by 37 (31%) patients, whereas 18 patients (15%) reached the secondary endpoint. Twenty-nine (24%) patients started KRT and 8 patients (7%) had an eGFR decline $\geq 50\%$. After the acute phase (> 3 months after admission), initial serum creatinine and follow-up BP were the main predictors of future ESRD with hazard ratios of 6.1 (95% CI, 2.2–17) for patients with initial serum creatinine $\geq 175 \mu\text{mol/L}$ and 4.3 (95% CI, 1.4–14) for patients with uncontrolled hypertension.

Conclusions: Progressive renal function decline leading to ESRD remains a major threat to patients with malignant hypertension. BP control during follow-up was an important modifiable predictor of renal outcome.

Keywords: Malignant hypertension, End-stage renal disease, Chronic kidney disease, Renal outcome, Mortality

Background

Malignant hypertension is a hypertensive emergency usually defined by the presence of severe hypertension in combination with ischemic retinal changes consistent with grade III or IV hypertensive retinopathy according to the Keith, Wagener and Barker classification [1]. Malignant hypertension is frequently complicated by renal dysfunction [2,3]. In most cases this is secondary to malignant hypertension with renal biopsy specimens typically showing acute ischemic changes secondary to medial hypertrophy, intimal hyperplasia and fibrinoid necrosis of small arteries and arterioles [4]. Although the

survival of malignant hypertension has considerably improved with the advent of antihypertensive therapy, end-stage renal disease (ESRD) remains a significant cause of morbidity and mortality [5,6]. Depending on the setting and patient characteristics between 18% and 41% of patients may require kidney replacement therapy (KRT) during the acute phase [6,7].

One would expect that because of advances in the awareness, treatment and control of hypertension in the population at large the incidence of malignant hypertension and its renal complications would have declined. However, we and others have shown that malignant hypertension remains relatively common in large multi-ethnic communities and in urban sub-Saharan African populations. In the Netherlands, the relative contribution of malignant hypertension to the total number of patients starting KRT has increased by 40% in the past

* Correspondence: f.amraoui@amc.nl

†Equal contributors

¹Departments of internal and vascular medicine, Academic Medical Centre, Amsterdam, The Netherlands

Full list of author information is available at the end of the article

two decades [8]. Annual reports of the European Dialysis and Transplant Association and the US Renal Data System show that hypertension is an important cause of ESRD, but the role of hypertensive crises are not specified [9,10].

Previous studies have demonstrated recovery from acute renal dysfunction in some patients with malignant hypertension and ESRD [11,12]. However, data concerning long-term renal outcome are limited. Moreover, the influences of modifiable predictors such as blood pressure (BP) control have not been established. In this study, we aimed to assess long-term renal outcome and predictors of ESRD and renal function decline in patients with malignant hypertension.

Methods

Included were patients presenting with malignant hypertension at a large teaching hospital, serving a multi-ethnic community in Amsterdam, the Netherlands. Patients were recruited between August 1992 and January 2010. The methods for the selection strategy have been previously described [6]. Briefly, the hospital database, in which the diagnosis at discharge is recorded according to the International Classification of Diseases codes (ICD) was searched. All charts of patients admitted with the diagnosis 'essential malignant hypertension' (ICD 401.0), 'secondary malignant hypertension' (ICD 405.09), 'hypertension with cardiac disease/ malignant' (ICD 402.0), 'hypertension with kidney disease/malignant' (ICD 403.0) and 'hypertensive encephalopathy' (ICD 437.2), were reviewed for the WHO criteria of malignant hypertension (i.e. diastolic BP \geq 120 mmHg and presence of grade III or IV hypertensive retinopathy [1]). To identify the presence of registration errors, computer data of all patients discharged with the diagnosis 'essential hypertension' (ICD 401.9) were also analyzed which showed the presence of one patient with malignant hypertension. Hereafter, we subjected our selection strategy to a sensitivity analysis by searching the emergency room archives for patients fulfilling the clinical criteria for malignant hypertension in a sample of 3 different years, with each year randomly selected from a period of 5 consecutive years between 1992-2008.

Excluded were patients < 18 years, pregnant women and patients who were already on dialysis before admission and patients referred from elsewhere. This study was performed in adherence with the Declaration of Helsinki. The Ethics Committee in our hospital decided approval was not required.

Definitions and analyses

Follow-up and outcome data were obtained from the outpatient department and from general practitioners. The primary endpoint was ESRD defined as a composite

of the start of permanent KRT or a 50% reduction in eGFR during follow-up. All cause mortality was assessed as secondary endpoint. Because both recovery and deterioration of renal function occur frequently during the initial treatment of malignant hypertension [6], renal outcome data were censored during the first 3 months following admission. Change in eGFR was calculated as the difference between first serum creatinine 3 months after admission and last available serum creatinine during follow-up. For calculating eGFR, the Modification of Diet in Renal Disease (MDRD) formula was used [13]. Vital status of patients who were lost to follow-up was assessed by inquiry of the municipal administration registries.

Ethnicity was defined as self-reported black or self-reported white. Black participants were mainly from sub-Saharan Africa and from Surinam or the Dutch Antilles. Secondary causes of malignant hypertension were reported as present in case of any medical condition or therapy that could be related to the development of this type of hypertensive emergency. Thrombotic microangiopathy (TMA) was defined as 1) thrombocytopenia (platelet count < 150 \times 10⁹/L) together with either an elevated lactate dehydrogenase (LDH \geq 220 U/L) or the presence of fragmentocytes and 2) resolution of these parameters with BP lowering therapy. Macroalbuminuria was defined as urinary protein excretion greater than 300 mg/24-h, > 200 mg/L in spot urine or 2+ for dipstick proteinuria. Left ventricular hypertrophy was considered present when detected by a cardiologist on cardiac ultrasound (left ventricular wall thickness > 11 mm) or by ECG as defined by the Sokolow-Lyon criteria. Mean follow-up BP was defined as the average of three BP recordings starting with the first measurement 3 months after admission. The second BP recording was the measurement closest to the median of the follow-up period and the third recording was defined as the last available follow-up BP value. Blood pressure was considered to be adequately controlled if the average of all measurements was < 140/90 mmHg.

Statistical analysis

Data are expressed as mean \pm standard deviation (SD) when normally distributed and as median and interquartile range (IQR) when distribution was skewed. Frequencies and percentages are given for categorical variables. Between group differences were assessed by *t*-test for parametric and Mann-Whitney *U* test for non-parametric distributions. Chi-square analysis was used for categorical variables. Cox proportional hazard analysis was used to assess renal outcome predictors during follow-up. First, single variables with a pathophysiological relevance that had a significant association with

the outcome parameter were entered in the model. Next, a backward elimination method was used in which the variable with the smallest partial correlation with the dependent variable was removed first. Hazard ratios (HR) and 95% confidence intervals (CI) were calculated. Finally, significant variables were tested for interaction. For statistical analyses, SPSS software was used (Statistical Package for the Social Sciences, version 18.0, Inc. Chicago, Illinois, USA). P values were considered to indicate a significant difference if $P < 0.05$.

Results

Baseline characteristics

A total of 168 patients were identified via the hospital database search. Of these patients, 120 fulfilled the WHO criteria of malignant hypertension and could be included in the study (Figure 1). A sensitivity analysis showed that no patients who visited the emergency room with malignant hypertension in 3 randomly selected years between 1992-2008 were missed.

Baseline characteristics are summarized in Table 1. Median serum creatinine at admission was 175 $\mu\text{mol/L}$ (IQR 104-402 $\mu\text{mol/L}$). Patients with serum creatinine $\geq 175 \mu\text{mol/L}$ were more often black (59% vs. 36%, $P = 0.01$) and had higher systolic (235 vs. 225 mmHg, $P = 0.03$) and diastolic BP values (148 vs. 141 mmHg, $P = 0.04$). These patients more frequently displayed TMA (51% vs. 9%, $P < 0.001$), macroalbuminuria (92% vs. 53%, $P < 0.001$) and left ventricular hypertrophy (89% vs. 70%, $P = 0.01$). There was no difference in age, sex, severity of retinopathy or the presence of primary renal and renovascular disease. At the start of follow-up (3 months after admission) median eGFR was 41 ml/min/1.73 m^2 (IQR 20-68 ml/min/1.73 m^2).

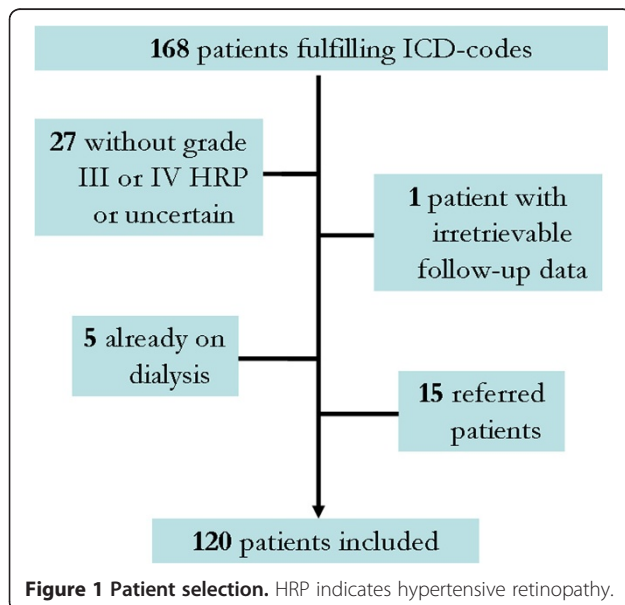


Table 1 Baseline characteristics of 120 consecutive patients with malignant hypertension

| Baseline characteristics | |
|---|---------------|
| Male, n (%) | 83 (69) |
| Age, mean (SD) | 44 (12) |
| Black, n (%) | 57 (48) |
| Systolic blood pressure (mmHg), mean (SD) | 230 (23) |
| Diastolic blood pressure (mmHg), mean (SD) | 145 (17) |
| Previous hypertension, n (%) | 65 (54) |
| Use of anti-hypertensive medication, n (%) | 39 (33) |
| Secondary cause of malignant hypertension, n (%) | 25 (21) |
| Serum creatinine at admission ($\mu\text{mol/L}$), median (IQR) | 175 (104-402) |
| Thrombotic microangiopathy, n (%) | 36 (30) |
| Hypertensive encephalopathy | 11 (9) |
| Retinopathy grade IV, n (%) | 66 (55) |
| Left ventricular hypertrophy, n (%) | 95 (79) |
| Macroalbuminuria, n (%) | 66 (55) |
| Diabetes mellitus type 2, n (%) | 6 (5) |
| Current smoker, n (%) | 39 (33) |

*IQR indicates interquartile range.

Primary renal disease could be identified in 9 patients (8%), whereas renovascular disease could be identified in 7 patients (6%). Primary renal diagnoses included biopsy proven membranoproliferative glomerulonephritis (3 patients), IgA nephropathy (3 patients) and renal involvement of systemic scleroderma (1 patient). Polycystic kidney disease (1 patient) and reflux nephropathy (1 patient) were diagnosed radiologically. Renovascular diseases included renal artery stenosis (4 patients), renal artery obstruction (1 patient), renal infarction (1 patient) and renovascular abnormalities secondary to polyarteritis nodosa (1 patient).

Renal outcome and mortality

After a median follow-up of 67 months (IQR 28-108 months), 31% reached the primary composite endpoint, 29 patients (24%) started KRT, whereas 8 patients (7%) had an eGFR decline $\geq 50\%$ compared to baseline. Sixteen patients (13%) required haemodialysis within 3 months after admission and this could be discontinued in 2 patients within this period. Of the 14 patients who reached the primary endpoint within 3 months after admission, 10 patients were black and 4 were white ($P = 0.06$). The proportion of patients developing ESRD was not significantly different between those having primary malignant hypertension and those with primary renal or renovascular disease (24% vs. 38% respectively, $P = 0.18$). A total of 18 (15%) patients died during follow-up, none of the patients died within 3 months after admission. Death was caused by cardiovascular events

(6 patients), malignancy (3 patients), ESRD (2 patients) and infectious diseases (2 patients). The cause of death of 5 patients was uncertain.

Predictors of long-term renal outcome and mortality

For analysis of predictors of long-term renal outcome and mortality, patients requiring permanent haemodialysis within 3 months after admission were censored, leaving 106 patients for analysis. Follow-up BP was adequately controlled in 33 out of 92 patients (36%) and uncontrolled in 59 (64%) patients. Black patients had a higher follow-up BP compared to white patients with a systolic BP of 153 ± 23 mmHg in black and 140 ± 21 mmHg in white patients ($P < 0.01$). Diastolic BP was 96 ± 12 mmHg versus 85 ± 11 mmHg respectively ($P < 0.01$). Data on BP during follow-up were incomplete for 14 out of 106 (13%) patients. Antihypertensive treatment during follow-up consisted of a mean number of 3.3 ± 1.1 drugs. Patients with controlled follow-up BP used on average 2.9 ± 1.1 antihypertensive drugs, while patients with uncontrolled BP used on average 3.5 ± 1.1 drugs ($P < 0.01$).

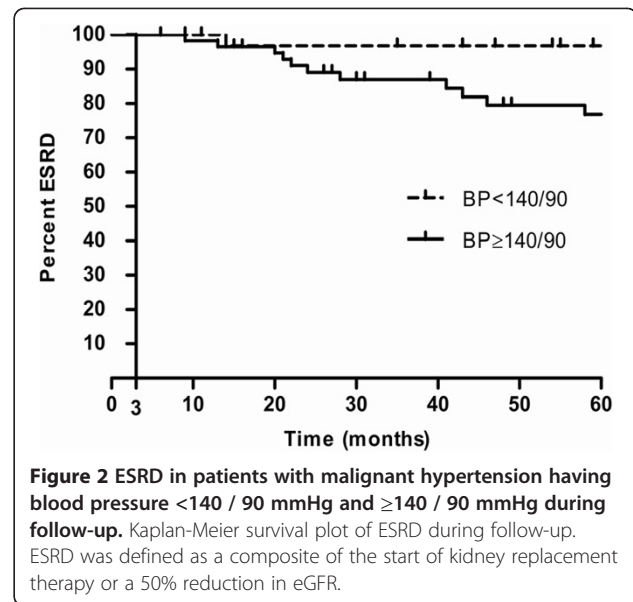
The primary endpoint was reached by 23 out of 106 (22%) patients after a median follow-up of 67 months (IQR 28-108 months) with 15 (14%) patients starting KRT and 8 (8%) patients with an eGFR decline $\geq 50\%$ (Table 2). Initial serum creatinine ≥ 175 $\mu\text{mol/L}$ and uncontrolled hypertension (BP $\geq 140/90$ mmHg) during follow-up were identified as main predictors of the composite renal outcome (Figure 2) with hazard ratios (HR)

Table 2 Patient characteristics at follow-up

| Follow-up characteristics | |
|--|-------------|
| Follow-up time, months, median (IQR)* | 67 (28-108) |
| Died, n (%) | 18 (15) |
| Start of kidney replacement therapy, n (%) | 29 (24) |
| 50 % decline of eGFR, n (%) | 8 (7) |
| Systolic blood pressure (mmHg), mean (SD) | 146 (23) |
| Diastolic blood pressure (mmHg), mean (SD) | 90 (13) |
| Blood pressure < 140/ 90 mmHg, n (%) † | 33 (36) |
| BP 140-160/90-100 mmHg, n (%) | 42 (46) |
| BP 160-180/100-110 mmHg, n (%) | 12 (13) |
| BP > 180/100 mmHg, n (%) | 5 (5) |
| ACE-inhibitor or ARB, n (%) | 74 (80) |
| Beta-blocking agent, n (%) | 61 (66) |
| Calcium-antagonist, n (%) | 79 (86) |
| Diuretic, n (%) | 64 (70) |
| Alfa-blocking agent, n (%) | 18 (20) |

*IQR indicates interquartile range.

† Data on hypertension status and antihypertensive medication during follow-up were available for 92 patients. Percentages are calculated for a total of 92 patients. One patient used Minoxidil in addition to all 5 antihypertensive classes listed in the table.



of 6.1 (95% CI, 2.2–17) and 4.3 (95% CI, 1.4–14) respectively (Table 3). Patients with a mean follow-up BP $> 160/100$ mmHg had a HR of 5.1 (95% CI, 1.4–18) for developing ESRD ($P = 0.01$).

Adjustment for primary renovascular and kidney disease did not materially change the predictive value of hypertension control on renal outcome. After adjustment HR were 5.2 (95% CI 1.8-15) for patients with initial serum creatinine ≥ 175 $\mu\text{mol/L}$ and 4.7 (95% CI, 1.3–17) for patients having an average follow-up BP $\geq 140/90$. The interaction between serum creatinine and hypertension status was not significant ($P = 0.45$). Initial serum creatinine ≥ 175 $\mu\text{mol/L}$ and uncontrolled hypertension during follow-up were also the main predictors of mortality with HR of 6.3 (95% CI, 2.0–20) and 3.1 (95% CI, 1.0–9.9) respectively.

Discussion

In this study, we show that ESRD remains highly prevalent among patients who were previously admitted with malignant hypertension, with 31% starting KRT or having a 50% eGFR decline after a median follow-up of 67 months. Major determinants of long-term renal outcome were initial serum creatinine values and BP control during follow-up. Only one controlled hypertensive patient developed the renal endpoint during follow-up as opposed to 22 patients with uncontrolled hypertension. Although previously identified as an important predictor of renal function improvement [6], the presence of TMA was not found to predict ESRD.

The incidence rates of ESRD in series describing patients with malignant hypertension vary from 11% to 53% [2,14,15]. These variations may be due to differences in follow-up time, population characteristics and

Table 3 Cox regression analyses using backward elimination method to predict indicators for ESRD during follow-up

| Variables | Rank† | P-value | HR | 95% CI |
|---|-------|---------|-----|---------|
| Age | 5 | 0.60 | 0.9 | 0.5-1.6 |
| Male | 3 | 0.10 | 2.5 | 0.8-7.7 |
| Black | 6 | 0.82 | 1.1 | 0.3-3.8 |
| Initial creatinine $\geq 175 \mu\text{mol/L}$ | 1 | 0.00 | 6.1 | 2.2-17 |
| Uncontrolled hypertension | 2 | 0.01 | 4.3 | 1.4-14 |
| Trombotic microangiopathy | 4 | 0.19 | 1.9 | 0.7-5.2 |

* Renal outcome was defined as a composite of the start of KRT or 50% decline of eGFR.

†Indicates the rank of elimination in stepwise backward Cox regression.

selection bias. To prevent selection bias, we analyzed only patients admitted via the emergency room and excluded referred patients with malignant hypertension as they could be more likely to have ESRD. In addition, because our aim was to assess predictors of long-term renal outcome, we censored data of the first 3 months after admission as renal function during this period is frequently not yet stabilized.

This study demonstrates that the risk of developing ESRD in patients with malignant hypertension is markedly elevated. For example in the MRFIT trial, only 3% of patients with severe non-malignant hypertension (BP $\geq 210/120$ mmHg) developed ESRD after 16 years [16]. However, patients with evidence of end-organ damage including renal dysfunction (serum creatinine $> 177 \mu\text{mol/L}$) were excluded from the MRFIT trial. Therefore, differences in baseline renal function may account for the much higher incidence of ESRD in patients with malignant hypertension, who by definition display evidence of end-organ damage including renal damage. Besides causing acute renal damage, malignant hypertension may also reflect difficulty to regulate blood pressure in individuals on the long-term as placebo-controlled randomized clinical trials performed decades ago, showed that antihypertensive treatment effectively prevented progression of essential hypertension to malignant hypertension [17,18]. In addition, non-compliance to antihypertensive treatment and the lack of insurance and access to primary health care was observed more frequently in patients with severe and malignant hypertension [19]. In a previous report we showed that non-compliance to antihypertensive treatment and lack of medical insurance were also observed frequently in our population, particularly among ethnic minorities [3]. Our observation that patients with uncontrolled BP on follow-up had more antihypertensive drugs compared to those with controlled hypertension could be an indication of non-compliance. However, average BP was calculated for the complete follow-up period, whereas

data on antihypertensive drugs represent the last known treatment. The higher number of antihypertensive drugs could therefore also reflect an effort to control higher BP values earlier in the follow-up period.

Finally, in addition to differences in baseline renal function and long-term blood pressure control, the increased risk of developing ESRD in malignant hypertension might be attributable to endothelial dysfunction. While having similar blood pressure values, patients who previously suffered from malignant hypertension have been shown to display more pronounced endothelial dysfunction as compared to patients with high-risk (non-malignant) hypertension [20].

The potential effect of BP control on long-term renal outcome in malignant hypertension has been described previously in two small case-series from the 1980s including a total of 14 patients [21,22]. However, as BP control was achieved in almost all patients in these two case-series the potential benefit of BP lowering therapy on progression of ESRD could not be established. In our series, patients with uncontrolled hypertension (BP $\geq 140/90$ mmHg) had a 4.3 fold higher risk of developing ESRD compared to patients in whom BP was controlled. Patients with more severe hypertension ($> 160/100$ mmHg) during follow-up had a 5.1 fold higher risk of ESRD. It is conceivable that the propensity to develop ESRD in those with uncontrolled hypertension may be due to hyperperfusion of remaining nephrons in those with renal damage during the acute phase. This is also exemplified by the fact that renal function, while often improving after the initial phase, does not fully recover [6], suggesting residual renal damage.

There was no interaction between hypertension status and renal function at admission suggesting that the presence of renal dysfunction was not an important determinant of hypertension status. Several studies including our own have outlined the potential recovery of renal function in patients who were admitted with malignant hypertension after institution of BP lowering therapy [11,12,23]. In the current analysis, the presence of TMA as evidence of vascular damage, did not predict long-term renal outcome suggesting that the detrimental, but potentially reversible effect of TMA had no negative effect on long-term renal outcome.

This study has both strengths and limitations. Strengths include the contribution of clinically relevant and previously unavailable data on long-term renal outcome of an unselected, well described and relatively large cohort of patients with malignant hypertension. Limitations include its retrospective nature and consequently the possibility of coding errors. However, a sensitivity analysis showed that no patients with malignant hypertension who visited the emergency room between 1992–2008 were missed. Secondly, follow-up data on BP

control were incomplete for 14 out of 106 patients (13%), which may have influenced the association between hypertension status and ESRD. However baseline characteristics of patients who lacked complete BP data were not different with regard to initial serum creatinine, blood pressure values and need for KRT (data not shown). Thirdly, analysis of the predictive value of follow-up proteinuria in this study was hampered by differences in testing methods for urinary protein excretion. Also, the reason for performing urine analysis in the follow-up was subject to bias by indication, as it was more frequently done in patients showing progressive renal function decline. Finally, a separate analysis could not be performed for patients with primary renovascular and kidney disease because of the limited number of patients. However, Cox regression analysis revealed similar results after exclusion of these patients (data not shown). Although ESRD did not occur significantly more often in patients with than without renovascular and kidney disease, this study may have been underpowered to demonstrate clinically relevant differences in renal outcome.

Conclusions

Patients with malignant hypertension display a markedly elevated risk for developing ESRD after the acute phase. BP control during follow-up was strongly associated with the risk of progression to ESRD, prompting to adequate blood pressure regulation for improving long-term renal outcome in these patients.

Competing interests

The authors declare that they have no competing interests.

Authors' contributions

BJB was responsible for the conception and design of this study and revision of the manuscript. LV contributed to the analysis and interpretation of data and revision of the manuscript. SB and FA equally contributed to data collection, data analysis and drafting of the manuscript. All authors have read and approved the final manuscript.

Author details

¹Departments of internal and vascular medicine, Academic Medical Centre, Amsterdam, The Netherlands. ²Departments of internal medicine and nephrology, Academic Medical Centre, Meibergdreef 9, Amsterdam 1105 AZ, The Netherlands.

Received: 11 November 2011 Accepted: 12 July 2012

Published: 30 July 2012

References

1. Keith NM, Wagener HP, Barker NW: Some different types of essential hypertension: their course and prognosis. *Am J Med Sci* 1939, **196**:332–343.
2. Lip GY, Beevers M, Beevers DG: Complications and survival of 315 patients with malignant-phase hypertension. *J Hypertens* 1995, **13**:915–924.
3. van den Born BJ, Koopmans RP, Groeneveld JO, van Montfrans GA: Ethnic disparities in the incidence, presentation and complications of malignant hypertension. *J Hypertens* 2006, **24**:2299–2304.
4. Sanerkin NG: Vascular lesions of malignant essential hypertension. *J Pathol* 1971, **103**:177–184.

5. Lane DA, Lip GY, Beevers DG: Improving survival of malignant hypertension patients over 40 years. *Am J Hypertens* 2009, **22**:1199–1204.
6. van den Born BJ, Honnebiel UP, Koopmans RP, van Montfrans GA: Microangiopathic hemolysis and renal failure in malignant hypertension. *Hypertension* 2005, **45**:246–251.
7. Kadiri S, Olutade BO: The clinical presentation of malignant hypertension in Nigerians. *J Hum Hypertens* 1991, **5**:339–343.
8. Dutch Renal Registry (RENINE). 2010 <https://www.reninenl/page?id=home&lang=en>.
9. Collins AJ, Foley RN, Herzog C, Chavers B, Gilbertson D, Ishani A, Kasiske B, Liu J, Mau LW, McBean M, et al: US Renal Data System 2010 Annual Data Report. *Am J Kidney Dis* 2011, **57**(A8):e1–A8. 526.
10. Stel VS, van de Luijtgarden MW, Wanner C, Jager KJ: The 2008 ERA-EDTA Registry Annual Report—a precis. *NDT Plus* 2011, **4**:1–13.
11. Mourad G, Mimran A, Mion CM: Recovery of renal function in patients with accelerated malignant nephrosclerosis on maintenance dialysis with management of blood pressure by captopril. *Nephron* 1985, **41**:166–169.
12. Isles CG, McLay A, Jones JM: Recovery in malignant hypertension presenting as acute renal failure. *Q J Med* 1984, **53**:439–452.
13. Levey AS, Bosch JP, Lewis JB, Greene T, Rogers N, Roth D: A more accurate method to estimate glomerular filtration rate from serum creatinine: a new prediction equation. Modification of Diet in Renal Disease Study Group. *Ann Intern Med* 1999, **130**:461–470.
14. Guerin C, Gonthier R, Berthoux FC: Long-term prognosis in malignant or accelerated hypertension. *Nephrol Dial Transplant* 1988, **3**:33–37.
15. Gonzalez R, Morales E, Segura J, Ruilope LM, Praga M: Long-term renal survival in malignant hypertension. *Nephrol Dial Transplant* 2010, **25**:3266–3272.
16. Klag MJ, Whelton PK, Randall BL, Neaton JD, Brancati FL, Ford CE, Shulman NB, Stamler J: Blood pressure and end-stage renal disease in men. *N Engl J Med* 1996, **334**:13–18.
17. Effects of treatment on morbidity in hypertension. Results in patients with diastolic blood pressures averaging 115 through 129 mmHg. *JAMA* 1967, **202**:1028–1034.
18. Effects of treatment on morbidity in hypertension. II. Results in patients with diastolic blood pressure averaging 90 through 114 mmHg. *JAMA* 1970, **213**:1143–1152.
19. Shea S, Misra D, Ehrlich MH, Field L, Francis CK: Predisposing factors for severe, uncontrolled hypertension in an inner-city minority population. *N Engl J Med* 1992, **327**:776–781.
20. Shantsila A, Dwivedi G, Shantsila E, Butt M, Beevers DG, Lip GY: Persistent macrovascular and microvascular dysfunction in patients with malignant hypertension. *Hypertension* 2011, **57**:490–496.
21. Mitchell HC, Graham RM, Pettinger WA: Renal function during long-term treatment of hypertension with minoxidil: comparison of benign and malignant hypertension. *Ann Intern Med* 1980, **93**:676–681.
22. Nicholson GD: Long-term survival after recovery from malignant nephrosclerosis. *Am J Hypertens* 1988, **1**:73–75.
23. Cordingley FT, Jones NF, Wing AJ, Hilton PJ: Reversible renal failure in malignant hypertension. *Clin Nephrol* 1980, **14**:98–103.

doi:10.1186/1471-2369-13-71

Cite this article as: Amraoui et al.: Long-term renal outcome in patients with malignant hypertension: a retrospective cohort study. *BMC Nephrology* 2012 **13**:71.