

Research Article

Sustained and Transient Contributions to the Rat Dark-Adapted Electroretinogram b-Wave

Trung M. Dang, Algis J. Vingrys, and Bang V. Bui

Department of Optometry and Vision Sciences, University of Melbourne, 4th Floor, 162 Alice Hoy Building, Monash Road, Parkville, VIC 3010, Australia

Correspondence should be addressed to Bang V. Bui; bvb@unimelb.edu.au

Received 31 October 2012; Accepted 31 January 2013

Academic Editor: Andrew G. Lee

Copyright © 2013 Trung M. Dang et al. This is an open access article distributed under the Creative Commons Attribution License, which permits unrestricted use, distribution, and reproduction in any medium, provided the original work is properly cited.

The most dominant feature of the electroretinogram, the b-wave, is thought to reflect ON-bipolar cell responses. However, a number of studies suggest that the b-wave is made up of several components. We consider the composition of the rat b-wave by subtracting corneal negative components obtained using intravitreal application of pharmacological agents to remove postreceptoral responses. By analyzing the intensity-response characteristic of the PII across a range of fixed times during and after a light step, we find that the rat isolated PII has 2 components. The first has fast rise and decay characteristics with a low sensitivity to light. GABA-mediated inhibitory pathways enhance this transient-ON component to manifest increased and decreased sensitivity to light at shorter (<160 ms) and longer times, respectively. The second component has slower temporal characteristics but is more sensitive to light. GABA-mediated inhibition enhances this sustained-ON component but has little effect on its sensitivity to light. After stimulus offset, both transient and sustained components return to baseline, and a long latency sustained positive component becomes apparent. The light sensitivities of transient-ON and sustained-OFF components are consistent with activity arising from cone ON- and OFF-bipolar cells, whereas the sustained-ON component is likely to arise from rod bipolar cells.

1. Introduction

The flash electroretinogram (ERG) provides an excellent non-invasive means to assess retinal function [1]. The largest feature of this response is the b-wave, which follows the initial negative a-wave. The b-wave corresponds to the Granit's [2] PII component and is believed to be generated by the activity of ON-bipolar cells [1]. However, a number of studies have suggested that the PII component may arise from several sources, thus complicating the interpretation of b-wave loss in studies of retinal disease.

Potential contributors to the PII include rod and cone bipolar cell responses, with the later showing faster rise and decay kinetics [3]. ON- and OFF-responses can also be visualized in ERG responses from primates, rabbits, cats, and guinea pigs [4–7]. The responses of ON- and OFF-bipolar cells may have distinct temporal signatures in the b-wave as ON-bipolar cells have been shown to be more sustained compared with their OFF-counterparts in turtle retina [8]. More recent studies suggest that bipolar cells appear to

segregate into those producing transient and sustained responses [9, 10]. DeVries et al. [10] have attributed sustained and transient OFF-bipolar cell responses to differences in ionotropic glutamate receptor subtypes: Kainate and AMPA receptors on sustained and transient OFF-bipolar cells, respectively. The temporal characteristics of bipolar cell responses are also thought to be modified by inhibitory processes [11–13]. A number of studies have shown that inhibition of glycine and GABA receptors can modify bipolar cell output [14, 15]. For example, inhibition of GABA receptors produces more sustained ON bipolar cell responses [16–18] as well as smaller and slower ERG b-wave [17, 19, 20]. More recently, Herrmann and coworkers [21] showed that rod bipolar cell and the dark-adapted b-wave dynamic range in mice are extended by GABA-mediated sustained chloride current. Whether a similar effect is seen in the rat ERG has yet to be defined.

This paper considers whether the rat PII contains distinct fast and slow subcomponents. It employs several strategies to maximize the possibility for detecting such components.

First, the putative PII was isolated by removing photoreceptor and associated glial and epithelial responses. Second, response amplitudes are considered as a function of stimulus luminance systematically across a range of fixed times. Finally, by applying this analytical approach to data collected following pharmacological manipulation, it is possible to show that the rat ERG b-wave contains distinct fast and slow components.

2. Material and Methods

All animal experimental procedures were conducted with approval from our institutional Animal Experimentation Ethics Committee (A04001) and in accordance with the “Australian Code of Practice for the Care and Use of Animals for Scientific Purposes” [22]. Adult Long Evans rats between 10 and 12 weeks of age (180–270 g, Monash Animal Services, Clayton, VIC, Aust) were maintained at 22°C in a 30–70 lux environment with a 12-hour light/dark cycle (on at 8 am). Water and rat chow were provided *ad libitum*.

2.1. Electroretinography. Animals were dark adapted overnight (>12 hours) and prepared under dim red light ($\lambda_{\max} \sim 650$ nm). Anesthesia was induced with intramuscular injections of 60 mg/kg ketamine (ketamil 100 mg/mL, Troy Laboratories, Smithfield, Australia) and 5 mg/kg xylazine (Xylazil 100 mg/mL, Troy Laboratories). Supplemental injections of half the original dose were given every 50 minutes. Corneal anesthesia was achieved by instillation of one drop of proxymetacaine (Ophthec 0.5%, Allergan, Frenchs Forest, NSW, Australia). Mydriasis was induced with one drop of 0.5% tropicamide (Mydriacyl, Alcon Laboratories, Frenchs Forest, NSW, Australia), giving complete pupil dilation (≥ 4 mm) within 15 minutes that was maintained for the duration of experiments. Body temperature was maintained ($37 \pm 0.5^\circ\text{C}$) by placing the rat over a circulating-water heat pad (MGW Lauda, Lauda-Königshoffen, Germany) and covering the animal with an insulating blanket. The animal and heat pad were mounted on a custom-built platform with the rat’s neck and abdomen lightly secured to the stage with Velcro to minimize movement during recordings.

Full-field ERGs were recorded simultaneously from both eyes using chlorided silver electrodes. The active electrode was placed at the center of the cornea, and the reference was a circular scleral electrode placed around the equator. A stainless steel needle (F-E2-30, Grass-Telefactor, West Warwick, RI, USA) inserted subcutaneously into the tail served as the ground. Following electrode placement 1.0% carboxymethylcellulose sodium (Celluvisc, Allergan, Irvine, CA, USA) was applied to aid electrical conductivity. A readaptation period of 10 minutes in darkness was allowed following electrode placement. The signals were band-pass filtered (0.3 Hz–1 kHz) over a 2560 (640 ms) epoch with a 4 kHz sampling rate. A 50 Hz notch filter was applied *post hoc* to eliminate line noise.

Stimulus duration of 256 ms was used to better visualize potential slow and fast components. White flashes (5 Watt LEDs, Luxeon, Philips Lumileds Lighting Co., CA, USA) were

delivered via a Ganzfeld integrating sphere (total diameter of 36 cm and 13 cm diameter aperture; Photometric Solutions International, Huntingdale, VIC, Australia). Stimulus energy was calibrated using an IL-1700 Research Radiometer (International light, Newbury Port, MA, USA) to return values in scotopic $\text{cd}\cdot\text{m}^{-2}$. ERG responses were obtained for flash luminances from -2.58 to $2.82 \log \text{cd}\cdot\text{m}^{-2}$ ($-2.58, -2.26, -1.94, -1.54, -0.95, -0.83, -0.62, -0.28, 0.04, 0.36, 0.76, 0.97, 1.27, 1.68, 2.18, 2.53, \text{ and } 2.82 \log \text{cd}\cdot\text{m}^{-2}$). The interstimulus interval was increased progressively from 45 to 240 s, to allow for complete recovery of b-wave amplitudes as established in pilot trials.

2.2. Intravitreal Injections. As previously described [23, 24], pharmacological agents were injected into the vitreal chamber via a 30-gauge needle attached with polyethylene tubing (inner diameter = 0.38 mm) to a Hamilton syringe (SGE syringes, Ringwood, Australia). The needle was introduced through the pars plana, approximately 1 mm posterior to the superior limbus and at an angle of 45 degrees to avoid the lens. Contact with the lens resulted in opacification, and data from such animals were excluded (<10% of animals). Aliquots of 2–5 μL were used with the upper limit chosen to minimize intraocular pressure changes that might compromise retinal function. Pharmacological agents, 2-amino-4-phosphonobutyric acid (APB, 400 μM), 6-cyano-7-nitroquinoxaline-2,3-dione (CNQX, 250 μM), and (1,2,5,6-tetrahydropyridine-4-yl)methylphosphonic acid (TPMPA, 100 μM) were obtained from Sigma-Aldrich (Sigma-Aldrich Pty. Ltd., Castle Hill, NSW, Australia). APB and TPMPA were diluted using distilled H_2O , whereas CNQX was mixed in the minimal volume of dimethyl sulphoxide (DMSO) that gave dilution. This DMSO concentration is known to have little effect on retinal function [25]. The concentrations stated represent the estimated final vitreal concentrations assuming complete dilution and a rat vitreal volume of 50 μL [26].

A total of thirteen animals received intravitreal injection of the pharmacological agents. Four animals had one eye treated with CNQX, four animals received a combination of APB and CNQX, and the remaining five had one eye treated with TPMPA with the contralateral untreated eye serving as a control in both cases. In addition to the 12 control eyes, an additional ten animals were included as controls in order to increase the size of the normal pool ($n = 22$). Following drug injection, single ERG waveforms were collected at five-minute intervals (stimulus of $-0.15 \log \text{cd}\cdot\text{m}^{-2}$) to track the retinal response for 40 minutes, ensuring a stable drug effect before the ERG protocol began.

2.3. Data Analysis. Average ($n = 4$) APB/CNQX treated signals were subtracted from individual control waveforms at each energy level to remove receptor, retinal pigment epithelial and glia contributions. Following this subtraction, the ascending limb of the b-wave was described by taking amplitudes at fixed times in 10 ms steps. Amplitudes following stimulus offset were collected at fixed times (every 10 ms) after the waveform had been rezeroed to the amplitude at stimulus offset (256 ms). This step was necessary to remove

the influence of the variable decay of the b-wave following its peak.

A hyperbolic function (1) was used to describe the amplitude-energy relationship at various fixed times. The reasoning here is that if the response at a particular fixed time during a light step is mediated by a single underlying generator, then a single hyperbolic function with an exponent of 1 should adequately describe the intensity-response relationship [27, 28]. The presence of a deviation from a single hyperbolic function implies contributions from multiple mechanisms. The function is given by maximal amplitude (V_{\max} , μV), semi-saturation constant (K , $\log \text{cd}\cdot\text{m}^{-2}$), and slope (n). Consider

$$V(I) = V_{\max} \cdot \left(\frac{I^n}{I^n + K^n} \right). \quad (1)$$

To determine whether data should be fit with a single or multiple hyperbolic function, an F -statistic is employed, which provides an unbiased method to assess whether using multiple mechanisms (and additional variables) provides a statistically superior fit ($P < 0.05$) to the data set (e.g., see Figure 4). This approach considers the null hypothesis that a complex model is not a better descriptor of the data than a single hyperbolic function, given the change in the merit function (sum-of-squares) and the degrees of freedom.

2.4. Statistics. Statistical analysis was performed using SigmaStat (v3.11, Systat Software Inc., 2004, IL, USA). Two-way repeated measures (RM-)ANOVA was conducted to consider interactions between treatment and stimulus energy. A Holm-Sidak Post Hoc test was applied following two-way RM-ANOVA to consider the source of significant differences ($P < 0.01$). The Holm-Sidak protects against increased Type 1 errors associated with multiple comparisons but is considered more powerful than the Bonferroni correction [29]. Throughout this study, group data are reported as means \pm SEM.

3. Results

Figure 1 shows representative control and drug-treated waveforms in response to 256 ms flashes. Figure 1(a) shows that at dimmer luminances, the ERG waveform is dominated by a corneal positive b-wave. The response remains sustained for 100 ms following light offset before it shows relaxation back to baseline. The relaxation overshoots the initial baseline to be corneal negative at 150 ms after flash offset. At higher luminances, both the a-wave and b-wave become more apparent. The b-wave develops an early transient peak (100 ms) followed by a slower tail and finally amplitude relaxation, after stimulus offset.

Following application of APB/CNQX (thin grey line), the b-wave is completely abolished, leaving a corneal negative waveform that grows in amplitude with higher light levels. Figure 1(b) shows the putative PII following subtraction of APB/CNQX-treated signals to remove presumed contributions from photoreceptors, RPE, and glial cells (thin grey line of Figure 1(a)). This approach shows that the putative PII is

sustained at low light levels and becomes more transient at brighter levels.

Figures 1(c) to 1(f) consider the response following stimulus offset after signals are rezeroed to the amplitude at 256 ms (stimulus offset). The amplitude and timing characteristics of the post-offset relaxation have several phases. At low light levels, from -2.58 to $-0.83 \log \text{cd}\cdot\text{m}^{-2}$, increasing luminance results in a progressively larger (more negative) relaxation (Figure 1(c), direction of grey arrow). For stimuli between -0.83 and $0.97 \log \text{cd}\cdot\text{m}^{-2}$, however, the relaxation becomes progressively smaller (Figure 1(d), grey arrow), but only after a latency of 100 ms after stimulus offset. Between 0.97 and $2.17 \log \text{cd}\cdot\text{m}^{-2}$, the relaxation at stimulus offset again becomes more negative, but only after a latency of 40 ms (Figure 1(e)). For brighter light levels of 2.17 to $2.82 \log \text{cd}\cdot\text{m}^{-2}$, the relaxation amplitude tends to become smaller again (Figure 1(f)).

3.1. Modulation of Ionotropic Neurotransmission. Figure 2(a) overlays CNQX (black line) and control (thin grey line) PII waveforms and shows that application of CNQX reduces the early transient peak of the b-wave. In addition, the relaxation after stimulus offset appears delayed with CNQX. Figure 2(b) compares control (grey area represents the standard error of the mean) and CNQX-treated amplitudes at a fixed time of 50 ms (A_{50}). CNQX intensity-response functions show a plateau between 1.27 – $1.68 \log \text{cd}\cdot\text{m}^{-2}$ and a secondary plateau at higher luminances, suggesting that at least two mechanisms contribute to the isolated PII under these conditions. Two-way ANOVA reveals significant reductions in amplitudes ($P < 0.035$; treatment \times luminance interaction, $F_{1,17} = 59.8$, $P < 0.001$) for stimulus luminances greater than $0.04 \log \text{cd}\cdot\text{m}^{-2}$.

Figure 2(c) shows that at A_{400} (144 ms after offset), the control intensity response-function shows an initial growth in amplitude that makes a plateau at approximately $-0.95 \log \text{cd}\cdot\text{m}^{-2}$. This is followed by a second phase of amplitude growth (between 1 and $2 \log \text{cd}\cdot\text{m}^{-2}$) and finally a reduction in magnitude at the highest luminous energies ($>2 \log \text{cd}\cdot\text{m}^{-2}$). CNQX application resulted in a second phase of amplitude growth that was approximately 1 log unit more sensitive compared with the control data.

3.2. Modulation of GABAergic Neurotransmission. Figure 3(a) shows representative PII waveforms following inhibition of GABA_A receptors (black line) compared with controls (thin grey line). TPMPA treatment resulted in smaller b-wave amplitudes particularly for brighter luminance. The offset relaxation was less apparent following TPMPA treatment, consistent with smaller onset amplitudes. Analysis of the intensity-response characteristics at A_{50} (during light step, Figure 3(b)) and A_{400} (after light step, Figure 3(c)) shows that TPMPA resulted in changes that are qualitatively similar to CNQX treatment (see Figure 2). Specifically, at A_{400} , TPMPA resulted in reduced amplitudes as well as a more sensitive second phase of amplitude increase.

3.3. Modeling Contributions to the PII during a Light Step. Figures 4(a) and 4(b) show average amplitudes at selected fixed

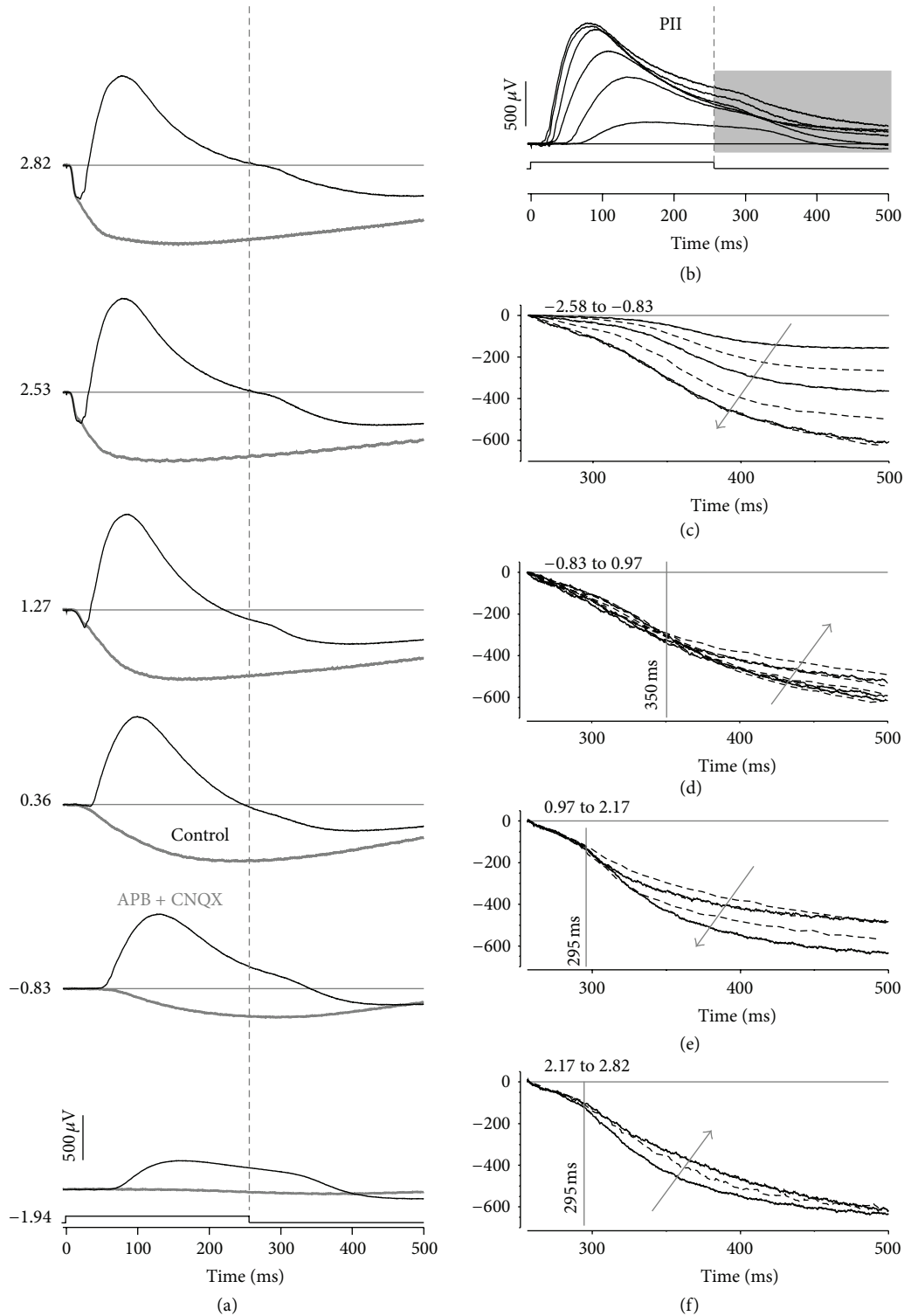


FIGURE 1: Rat electroretinogram in response to a light step. (a) Average waveforms for animals treated with APB/CNQX (thin grey) compared to untreated control eyes (black). The numbers along the right hand side represent the luminance in $\log \text{cd}\cdot\text{m}^{-2}$. (b) The responses from photoreceptor, photoreceptor-driven glial, and RPE responses are removed by subtracting APB- and CNQX-treated waveforms. (c)–(f) Response following light offset for control data. The waveform for the brightest luminance in each panel is repeated in the following panel to aid with comparisons. The grey arrows indicate growth in amplitude with increasing luminance. (c) and (e) show a growth in amplitude (i.e., more negative values), whereas (d) and (f) show a reduction in amplitudes. The vertical lines indicate approximate times up to which the waveforms can be seen to share a common shape. The luminance quoted in the panel labels is in $\log \text{cd}\cdot\text{m}^{-2}$.

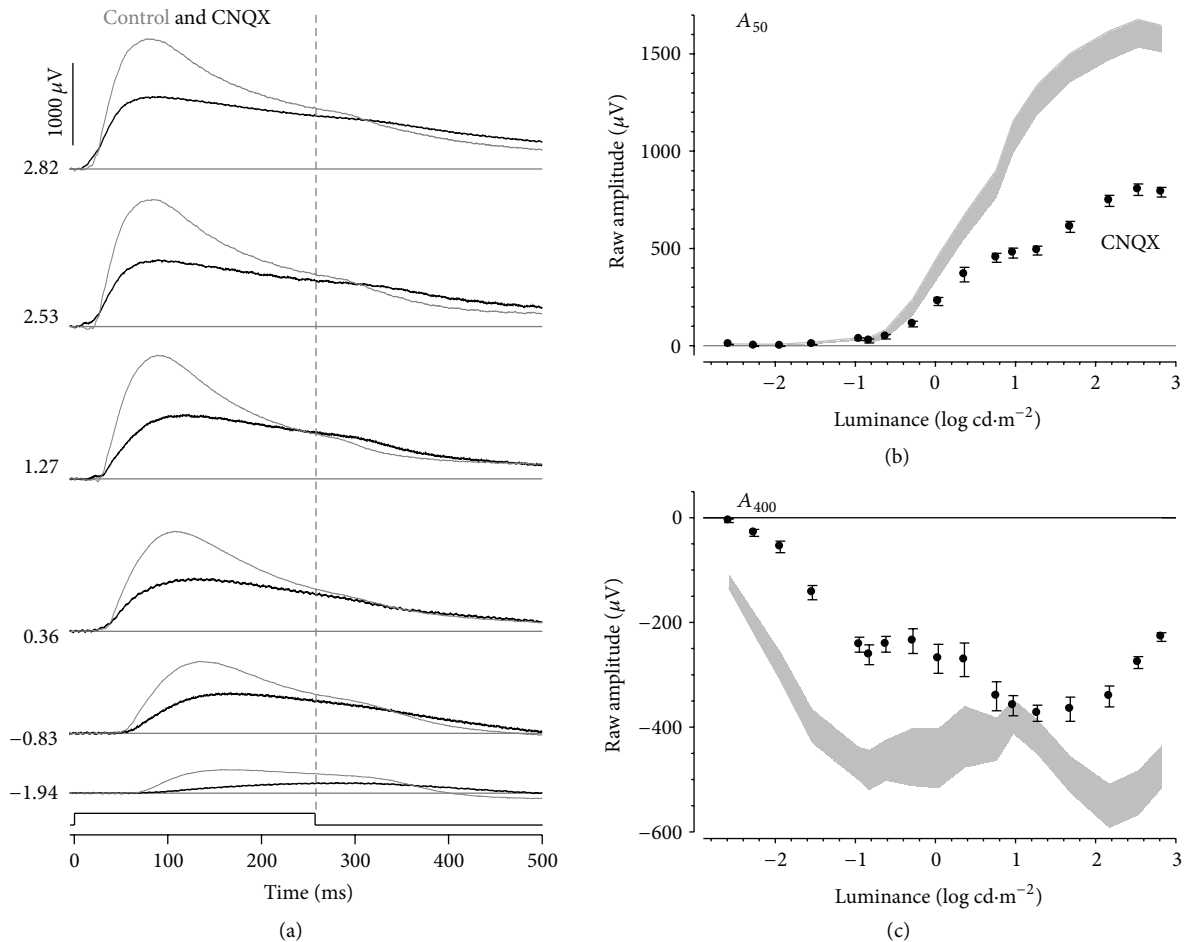


FIGURE 2: Effect of CNQX on rat-isolated PII. (a) Representative CNQX waveforms (thick) compared to its fellow control eye (thin). Luminance is given in $\log \text{cd}\cdot\text{m}^{-2}$ along the left. Grouped average ($\pm\text{SEM}$) amplitudes at fixed times of 50 (b) and 400 ms (c) are plotted against luminance. CNQX-treated (black filled) data are compared against control eyes (grey areas indicate 95% confidence intervals of controls as calculated from the SEM).

times optimized with a hyperbolic function (representative fixed times of A_{90} and A_{220}). At these fixed times, a simple hyperbolic function (thick line) fails to fully describe the data, suggesting the presence of more than one component. The arrows show the transition between the two intensity-response phases. The same data are better modeled by the summation (thin solid line) of two hyperbolic functions (dashed and grey lines), both having their exponents constrained to one. An F -test showed that a significantly better fit to the data could be achieved with the two hyperbolic functions ($P < 0.05$).

Figures 4(c) and 4(d) show optimized V_{\max} and K_{50} plotted as a function of fixed time for the two components, which have been designated as $m(1)$ and $m(2)$. The parameters show a systematic change across time. In Figure 4(d), it was apparent that the two hyperbolic functions show distinct sensitivities (K_{50}). If at each time we designate those hyperbolic functions that show larger K_{50} as $m(1)$ and those with smaller K_{50} as $m(2)$, then the corresponding V_{\max} values for $m(1)$ and $m(2)$ are shown in Figure 4(c). This separates the two components into a transient and a sustained

process. Figure 4(d) shows that the less sensitive transient $m(1)$ component underlies the earliest part of the isolated PII. Beyond a fixed time of 80 ms, the more sensitive but sustained $m(2)$ comes to dominate the rat PII. Interestingly, at later fixed times (>170 ms), another feature appears to grow in amplitude to contribute $\sim 20\%$ to the PII. This secondary amplitude growth, designated as $m(3)$, may reflect the presence of an additional slower component or the relaxation of $m(1)$ to a baseline during a light step. The K_{50} for $m(1)$ (Figure 4(d)) shows a transition at 170 ms, to become less sensitive (arrows) consistent with the possibility of intrusion from another component. Its intensity-response function reveals a low sensitivity, suggesting the possibility that it might arise from the cone pathway. The waveform designated $m(2)$ shows an increase in sensitivity to plateau at later times, consistent with a single component.

Figure 5(a) applies the same modeling approach to amplitudes at various fixed times following stimulus offset. The example shown here is for the fixed time of A_{400} , which shows an initial growth in amplitude, followed by a reduction in magnitude between -0.62 and $1.27 \log \text{cd}\cdot\text{m}^{-2}$ and finally

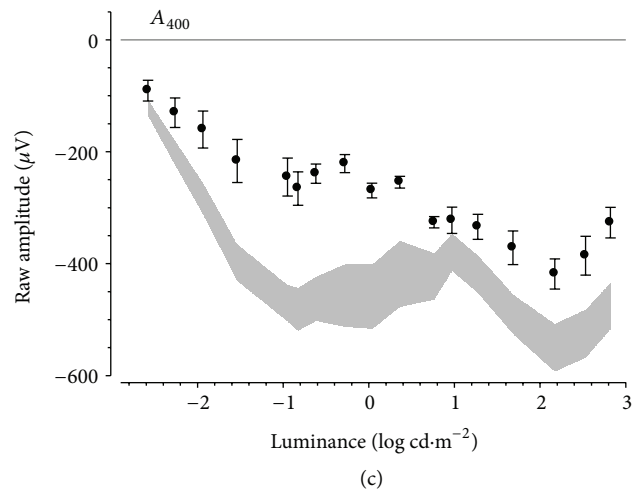
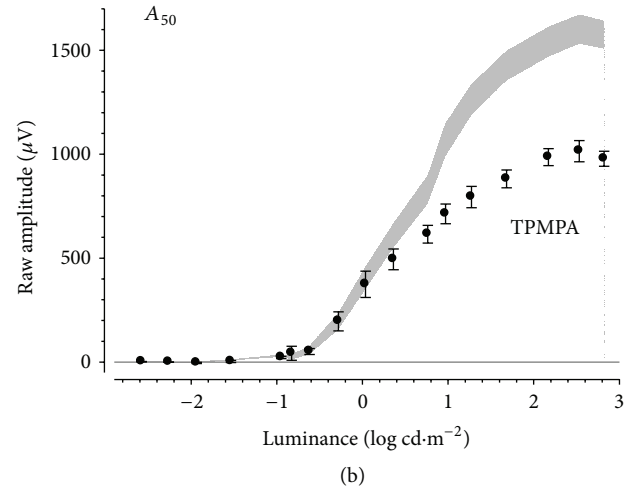
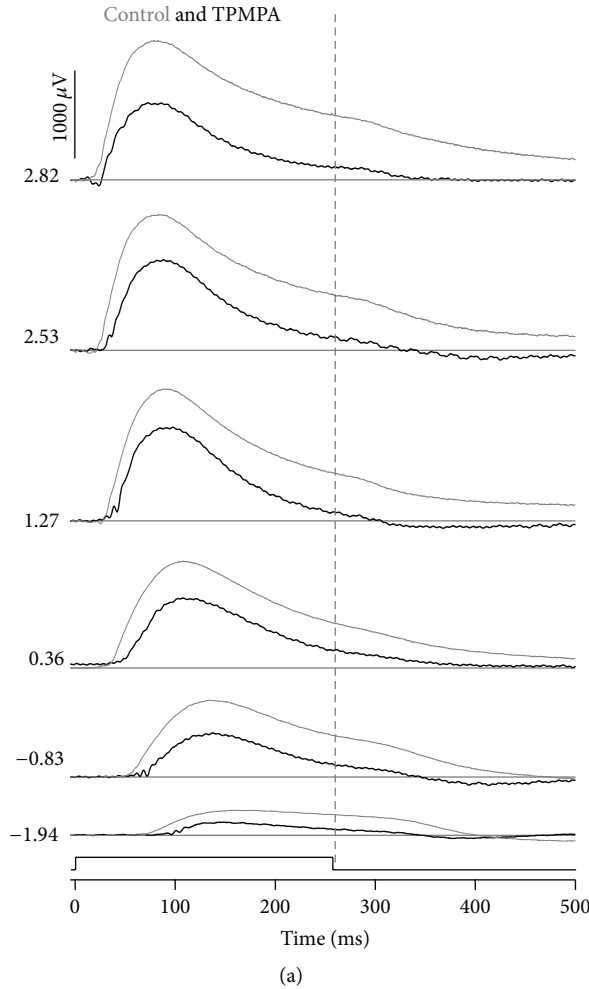


FIGURE 3: Effect of TPMPA on rat-isolated PII. (a) Representative TPMPA waveforms (thick) compared to its fellow control eye (thin). Luminance is given in $\log \text{cd}\cdot\text{m}^{-2}$ along the left. Grouped average ($\pm\text{SEM}$) amplitudes at fixed times of 50 (b) and 400 ms (c) are plotted against luminance. TPMPA-treated (black filled) data are compared against control eyes (grey areas indicate 95% confidence intervals of controls as calculated from the SEM).

a second phase of amplitude growth. This intensity-response profile cannot be modelled using one or even two hyperbolic functions. Indeed, it can only be adequately modeled with three functions (Figure 5(a)), the two negative components designated $m(4)$ and $m(5)$, with the addition of a positive component designated $m(6)$.

The merit function (log sum of square (SS) error) for the two- and three-component models was compared using an F -ratio. Figure 5(b) shows that beyond a fixed time of 340 ms, the addition of a third positive hyperbolic function provides a statistically smaller SS compared with a two-function model. The V_{\max} parameters for the three components increase with longer fixed times as shown in Figure 5(c). Figure 5(d) shows that the K_{50} parameters for the three components are distinct from each other and remain relatively constant across the range of fixed times after a light step.

Figure 6 shows the effect that CNQX and TPMPA have on the parameters of the putative $m(1)$ and $m(2)$ components. For V_{\max} , $m(1)$ was reduced by CNQX treatment ($\sim 59\%$) at early fixed times (<150 ms), whereas $m(3)$ appeared to be

unaffected. TPMPA produced a smaller attenuation of $m(1)$ ($\sim 44\%$, Figure 8(a)) but produced a small enhancement of $m(3)$. In contrast, Figure 6(b) shows that both CNQX and TPMPA produced similar effects on the sustained component ($m(2)$).

Figure 6(c) shows that application of CNQX removed the transition in K_{50} between the $m(1)$ to $m(3)$ components. Likewise, TPMPA application also removed this transition; however, K_{50} was larger for early times with TPMPA. This pattern of K_{50} change following CNQX or TPMPA suggests that $m(1)$ may be a common process whose sensitivity is differentially modified at early (more sensitive, <150 ms) and later fixed times (less sensitive, >180 ms). Figure 6(d) shows that CNQX and TPMPA had little effect on the K_{50} of $m(2)$.

3.4. Modeling Contributions to the Rat PII after a Light Step. As was the case for the control data, those recorded following CNQX and TPMPA application were evaluated to consider if three components are evident following a light step. In

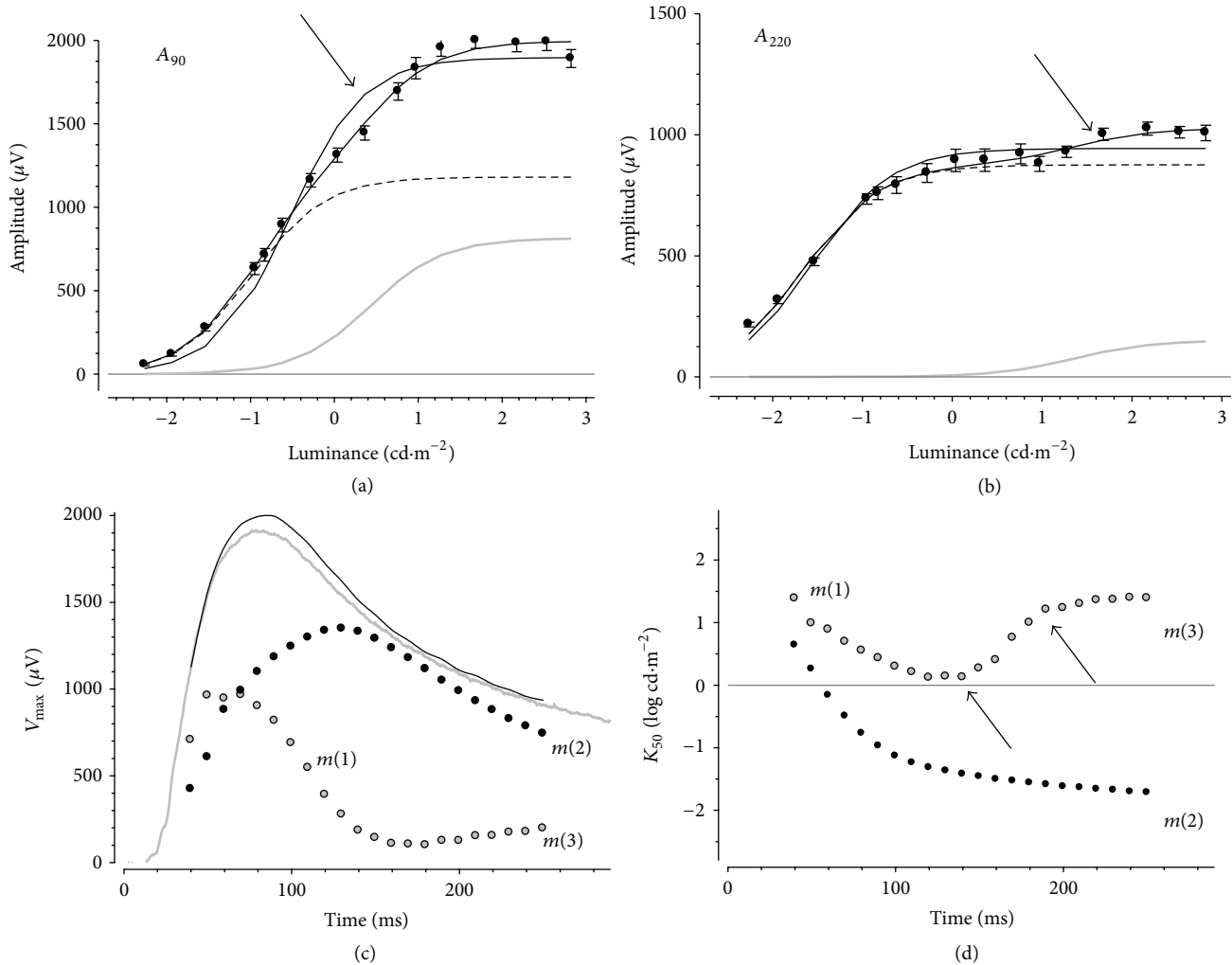


FIGURE 4: Modeling contributions to rat PII during a light step. Average amplitudes ($\pm\text{SEM}$) as a function of luminance at different fixed times (90 and 220 ms) after stimulus onset. (a) and (b) show a single hyperbolic function fit to the data (thick grey line). Arrows indicate the possible presence of a secondary mechanism at brighter intensities. A combination of two hyperbolic functions (grey trace and dashed trace) provides a better fit to the data than a single hyperbolic function. The black trace shows the sum of the two hyperbolic functions. The optimized V_{max} (c) and K_{50} (d) parameters are plotted as a function of time for the two hyperbolic functions. (c) shows the combined amplitude for the two hyperbolic functions (black trace) compared with the actual waveform for the $2.82 \log \text{cd}\cdot\text{m}^{-2}$ (grey trace) stimulus. The arrows in (d) indicate changes in K_{50} , which are likely to represent a transition between mechanisms.

both CNQX- and TPMPA-treated data, the log merit function shows that there was not a significant reduction in error to warrant the use of the more complex three hyperbolic function models; thus, only two are needed to explain the trends in the drug-treated eyes. This suggests that the positive going $m(6)$ was eliminated by the drug treatments.

Figures 7(a) and 7(b) show V_{max} after a light step derived from control and drug-treated data for $m(4)$ and $m(5)$. Eyes treated with CNQX or TPMPA returned smaller amplitudes compared with controls. The reductions in amplitudes after a light step may simply reflect drug-induced reductions in amplitudes during the light step. The K_{50} is shown for each function in Figure 7(d). A t -test shows for $m(4)$ that the CNQX K_{50} is larger than that of controls (control: -2.55 ± 0.04 , CNQX: -2.12 ± 0.05 ; $P < 0.001$), whereas TPMPA

was similar. For $m(5)$, both CNQX and TPMPA treatments produced K_{50} 's that were smaller than controls (control: 0.78 ± 0.02 , CNQX: 0.39 ± 0.04 , TPMPA: 0.47 ± 0.05 ; $P < 0.001$).

4. Discussion

We find that the isolated PII (control waveform—APB/CNQX sensitive waveforms) in the pigmented rat electroretinogram has complex luminance response characteristics during and after a 256 ms light step. Our approach of modeling the intensity-response function across a range of fixed times revealed that during a light step, the rat PII contains transient and sustained responses, which relax to baseline

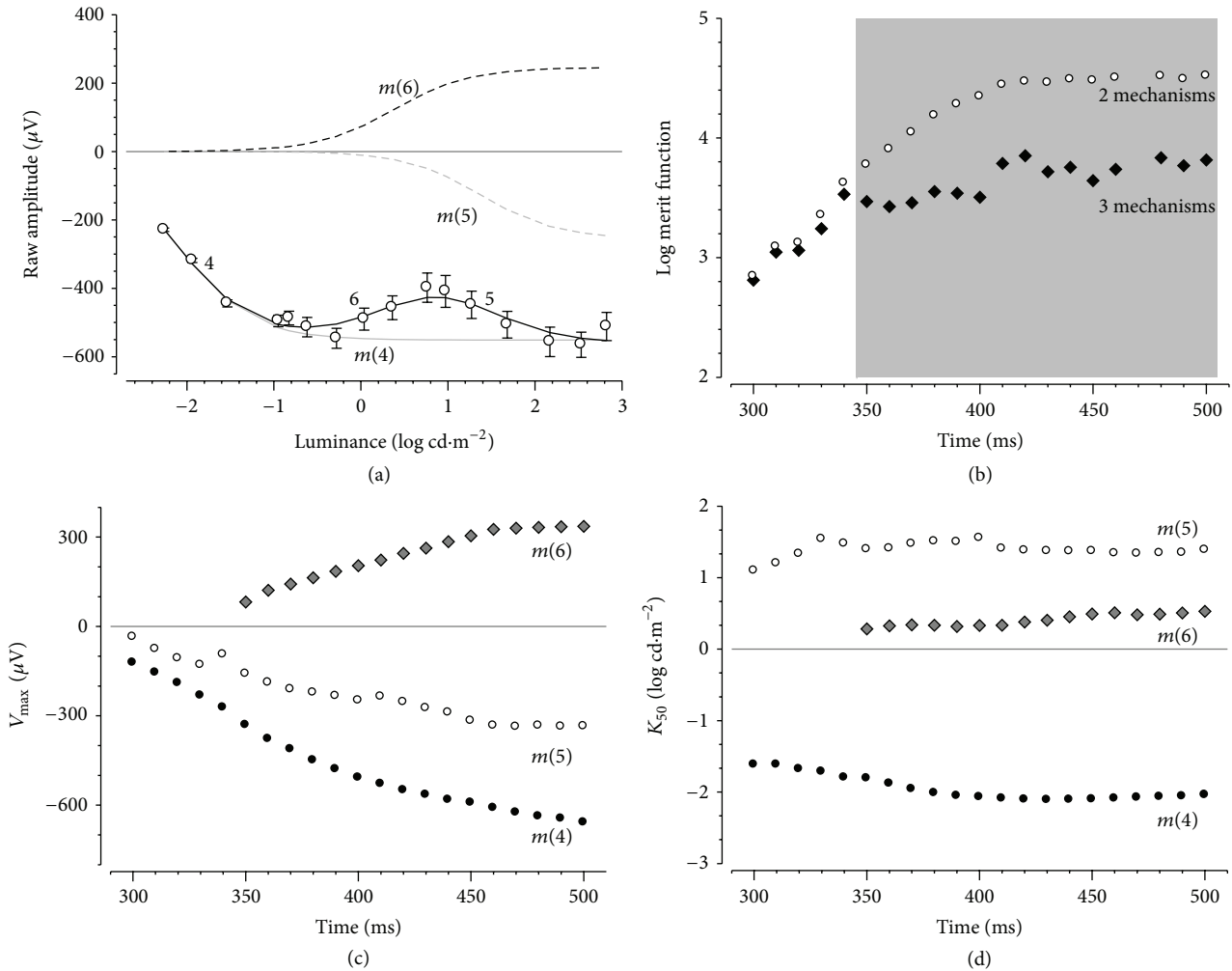


FIGURE 5: Modeling contributions to rat PII after a light step. Average (\pm SEM) amplitudes following stimulus offset at a fixed time of 400 ms are modeled with three mechanisms. The two negative components (4 and 5) are modeled with two negative hyperbolic functions ($m(4)$ solid grey line and $m(5)$ dashes grey line), whereas the positive portion (6) is fit with a positive mechanism ($m(6)$ black dashed line). The solid black line represents the summation of the three hyperbolic functions fit to the raw data. (b) The merit functions show that three hyperbolic functions (filled) provide statistically better fit for fixed times > 340 ms (grey area, $P < 0.05$) compared with two hyperbolic functions (unfilled). V_{\max} (c) and K_{50} (d) plotted as a function of fixed times.

after the light step. In addition, there was a slow corneal positive response that follows stimulus offset.

4.1. Contributions to the Rat PII during a Light Step. Consistent with previous studies of rodent b-waves [28, 30], we also find that the isolated PII amplitude (in our case for a fixed time of 50 ms, A_{50}) intensity-response function returned a slope of 0.99 (0.89, 1.09) (2.5%, 97.5%). Thus, a single hyperbolic function can describe the earliest portions of the rat PII leading edge. However, a single hyperbolic function cannot fully describe the intensity-response data for later fixed times after stimulus onset. Such complex behavior has previously been attributed to interactions between negative PIII and positive PII components [31–33]. However, even after subtracting corneal negative waveforms isolated using APB/CNQX, the PII intensity-response function retains its

complex profile, suggesting that there are multiple components underlying the response.

To model the amplitude, intensity-response function extracted at fixed times after stimulus onset required two hyperbolic functions (Figure 4), which segregate into processes that have high and low sensitivities to light (Figure 4(d)) and are sustained ($m(2)$) and transient ($m(1)$) (Figure 4(c)), respectively. This is consistent with previous studies suggesting that the b-wave contains sustained and transient responses (also termed slow and fast PII) [1, 9, 34, 35]. Here, we show that these sustained and transient components do not arise from interactions with corneal negative responses. Application of CNQX to block ionotropic glu-tamate receptors does not completely remove either $m(1)$ or $m(2)$, indicating that the transient and sustained responses do not arise simply from ON- and OFF-bipolar.

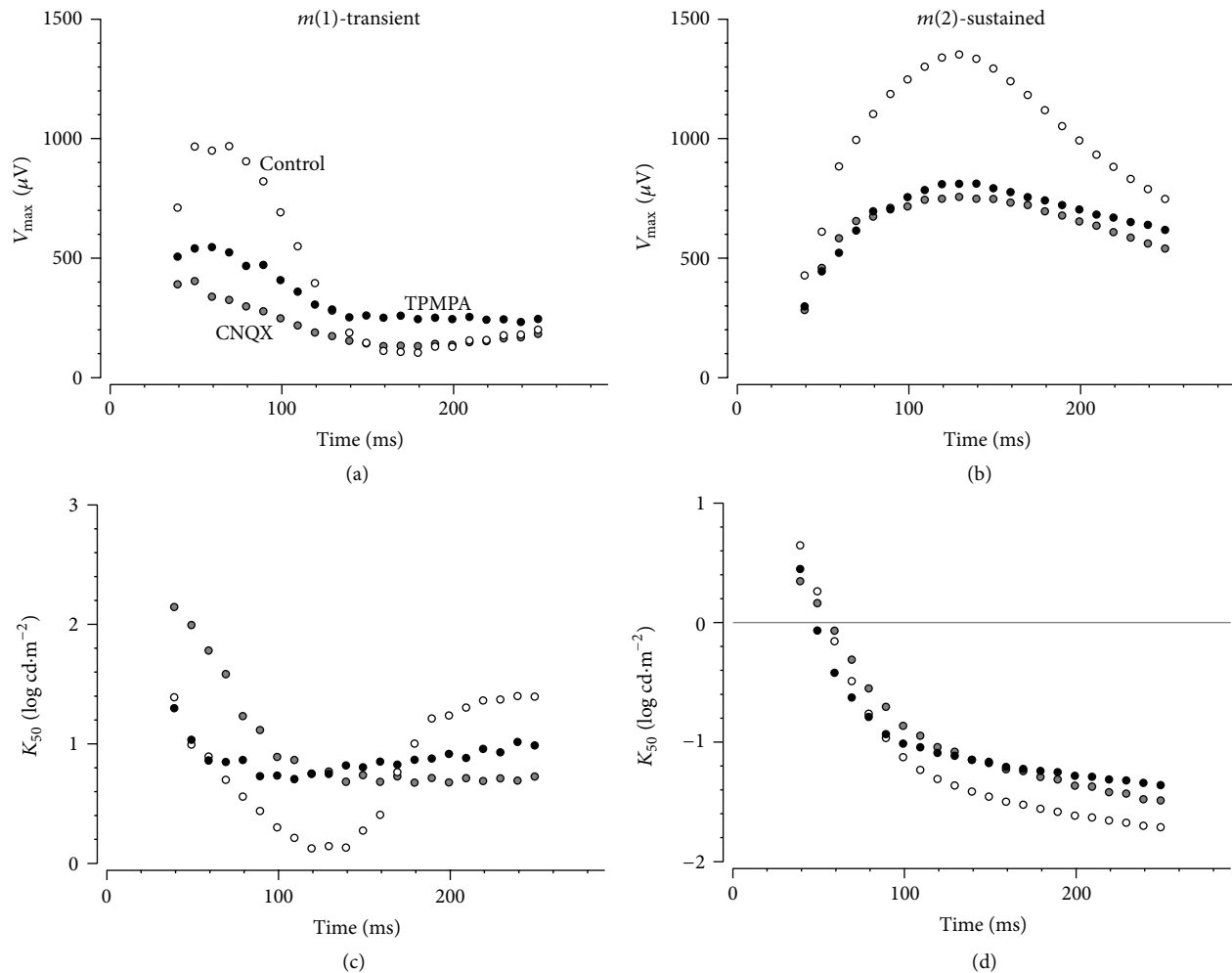


FIGURE 6: Effect of CNQX or TPMPA on rat PII during a light step. Optimized parameters V_{\max} ((a) and (b)) and K_{50} ((c) and (d)) for controls (unfilled symbols), CNQX (grey), and TPMPA treated (black symbols). Left panels show the transient mechanism ($m(1)$), whereas the right panels show the sustained mechanism ($m(2)$).

In addition to these sustained and transient components, there appears to be a third longer latency (140–190 ms) component (designated as $m(3)$). This component has low amplitude ($\sim 20\%$, Figure 4(c)) and is less sensitive than $m(1)$ for times longer than ~ 140 ms (Figure 4(d)). Treatment with either CNQX or TPMPA removes the transition of K_{50} from a more sensitive $m(1)$ to a less sensitive $m(3)$, producing a K_{50} profile that resembles a single mechanism (Figure 6(c)). This outcome suggests that $m(3)$ is likely to be a continuation of $m(1)$ during a light step.

Lateral elements in the IPL, in particular amacrine cells, can modulate the ON-bipolar cell response and the ERG b-wave [11, 17, 19, 36, 37]. Inhibitory input has been shown to confer transient and sustained characteristics to bipolar cell neurotransmitter release [11, 38]. Recordings from single cells suggest that such inhibition occurs via GABA_A and GABA_C receptors onto rod and cone ON-bipolar cells in rats [39]. Eggers et al. [40] show that higher proportions of GABA_C to GABA_A receptors-mediated inputs produce more prolonged inhibition, whereas a relative higher proportion

of GABA_A to GABA_C results in more transient inhibition. This is consistent with the finding that inhibition of GABA_C receptors using TPMPA makes bipolar cell responses in mouse, rat, and amphibian retina more sustained [16, 39] with a smaller response range [21]. A less hyperpolarized resting membrane potential arising from loss of a tonic GABA-mediated current [21, 41] would account for smaller and more sustained b-wave. Herrmann et al. [21] provide compelling evidence that dopamine-mediated GABA release possibly from horizontal cells, acting on both GABA_A and GABA_C receptors, modulates the dynamic range of rod bipolar cells via a sustained Cl^- current.

Activation of GABA_C receptors increases presynaptic Cl^- influx, hyperpolarizing bipolar cell and thereby inhibiting Ca^{2+} entry via L-type Ca^{2+} -channels [11, 21, 38]. Studies have shown that L-type Ca^{2+} channels may be differentially modified as a function of time following light onset [38, 42], implying that the ON-bipolar cell responses may be both enhanced and inhibited at different times. In rat retina, A17 amacrine cells are known to make reciprocal synapses onto

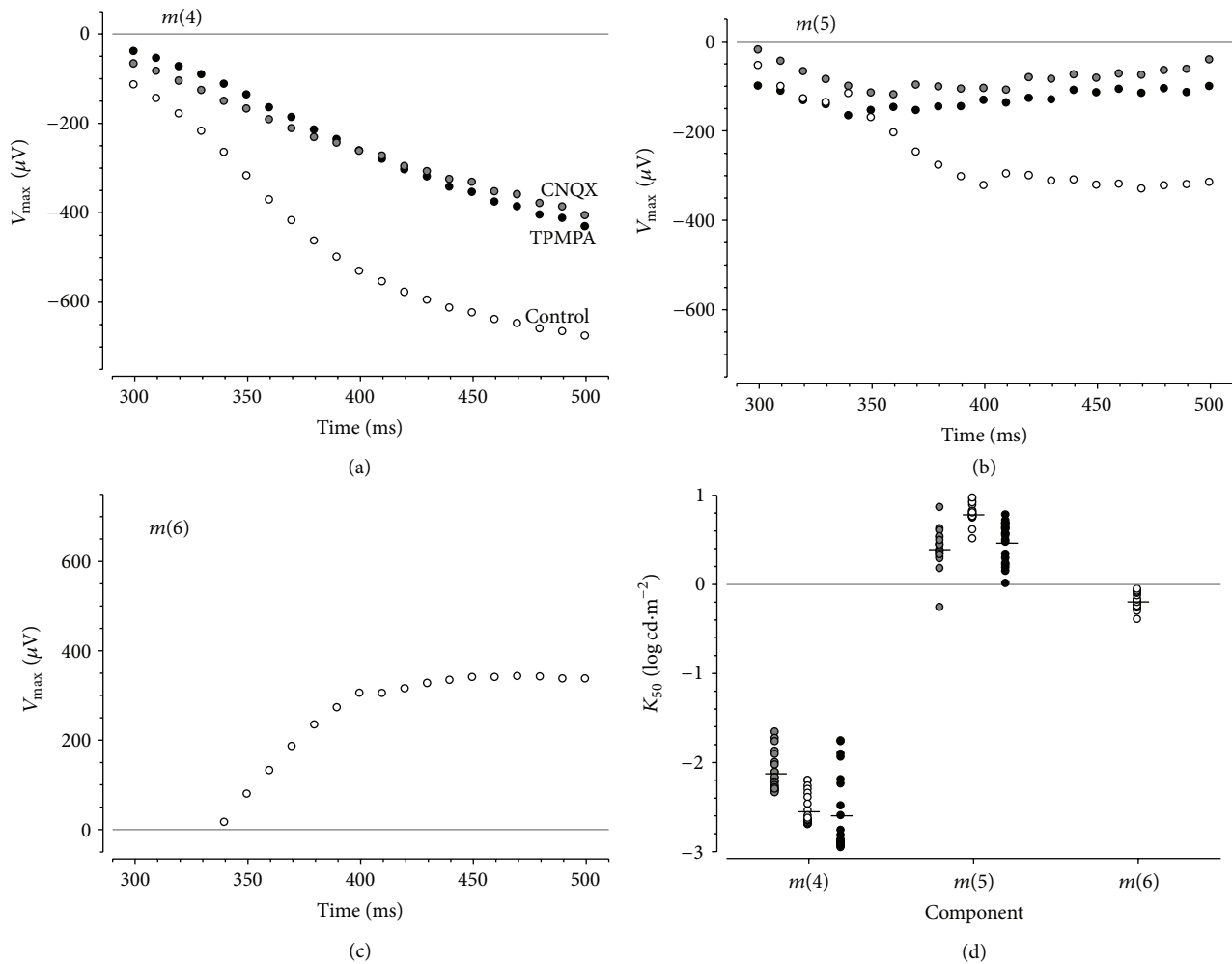


FIGURE 7: Effect of CNQX or TPMPA on rat PII after a light step. V_{\max} is shown for $m(4)$ (a), $m(5)$ (b), and $m(6)$ (c) mechanisms as a function of fixed time from light offset for controls (unfilled symbols), CNQX (grey symbols), and TPMPA (black symbols). (d) shows K_{50} for the three mechanisms for controls (unfilled), CNQX (grey), or TPMPA treated (black). The average for each group is indicated.

rod bipolar cells [11, 43]. It has been suggested, based on data from tiger salamander retina, that a glycinergic amacrine cell initially inhibits the A17 amacrine [42], thereby delaying its action at GABA_A receptors on ON-bipolar cell axon terminals. In this way, amacrine cell inhibition of bipolar cells will occur only after the glycinergic amacrine cell inhibition onto the A17 amacrine cell is removed (estimated to be ~ 150 ms, [42]). This mechanism provides an explanation for our finding that GABA_A-mediated inhibition produces a more transient PII component, by differentially modifying the PII at early and later times. Specifically, our TPMPA data shows that there is amplitude enhancement and increased light sensitivity from 70 to 160 ms after onset of the light step, as well as a decrease in light sensitivity for times later than 180 ms (Figure 6(c)). Moreover, that CNQX results in the same qualitative outcome is consistent with amacrine cell involvement, as AMPA/KA inhibition will affect both glycinergic and GABAergic amacrine cells. Herrmann et al. [21] suggest that dopamine released from amacrine cells might also modulate the tonic GABA currents at the level

of rod bipolar cell dendrites. Thus, modification of bipolar cell responses might occur at both outer and inner plexiform layers [21].

It is possible that transient and sustained components described here can reflect both cone and rod bipolar cell responses. The difference in response range of $m(2)$ and $m(1)$ might suggest rod and cone ON-bipolar cell contributions to these components, respectively. Previous work by Nixon and colleagues [44] has shown that the rod b-wave is ~ 1.5 log units more sensitive than the cone b-wave for short duration flashes. This difference is comparable to that found at early fixed times for $m(1)$ and $m(2)$ seen here (<120 ms, ~ 1.5 log units). However, interpreting $m(1)$ and $m(2)$ to be cone and rod mediated needs to be guarded as responses from single rat rod bipolar cells to a step of light have a faster onset [27] than the $m(2)$ components isolated in this study.

4.2. Contributions to the Rat PII following Stimulus Offset. The response following the offset of a light step could not be modeled with two components and required a third

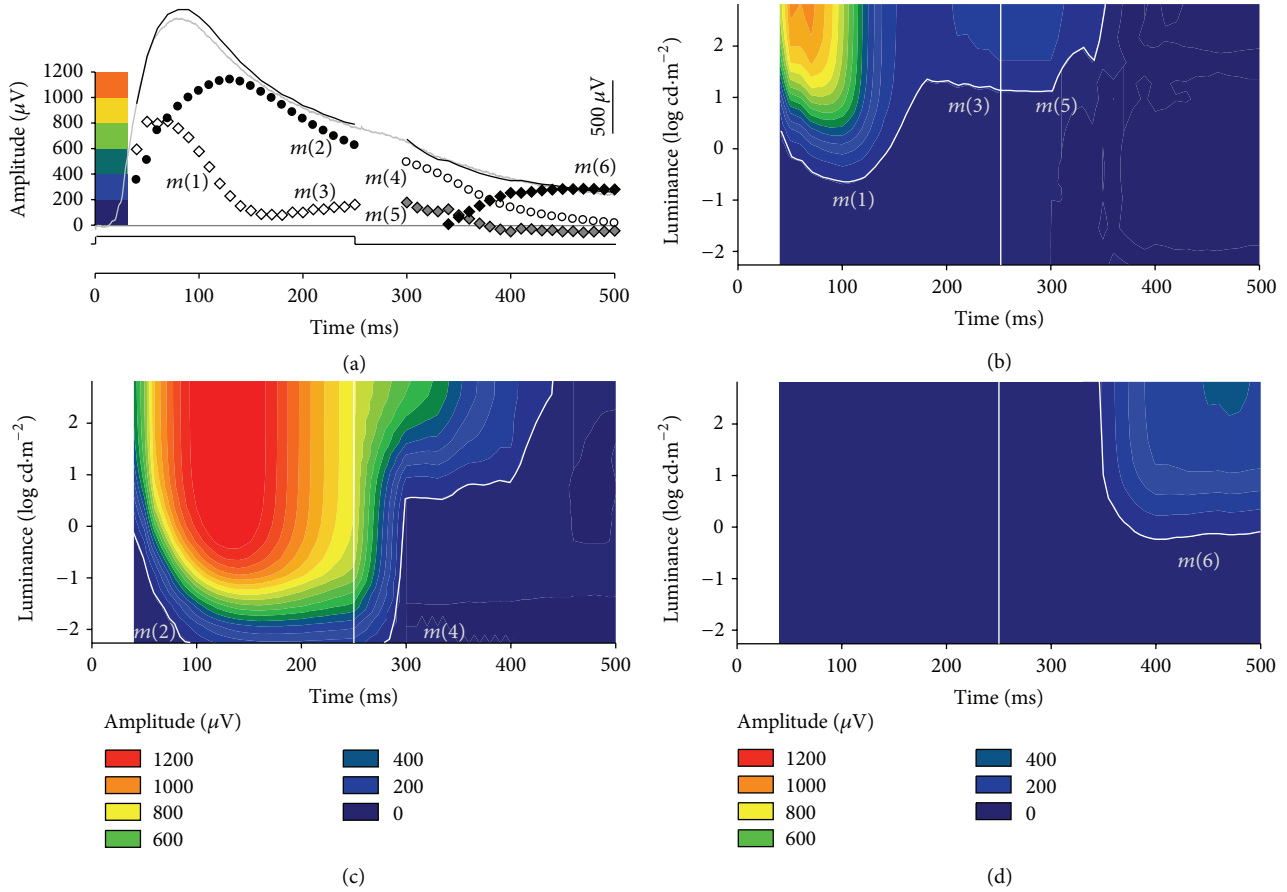


FIGURE 8: Summary of components underlying the rat PII response to a light step. (a) The interactions between the various components derived from our modeling are shown for the brightest luminance. Hence, there appear to be a minimum of three components underlying the scotopic ERG PII elicited using a light step. ($m(1)$ and $m(3)$): unfilled diamonds, $m(2)$: black circles, $m(4)$: unfilled circles, $m(5)$: grey diamonds, and $m(6)$: black diamonds). (b)–(d) show individual components plotted on a contour plot, as a function of time and luminance, with larger amplitudes indicated by warmer colors. (b) $m(1)$ has fast rise and decay characteristics with a low sensitivity to light. With longer times $m(1)$ transitions to $m(3)$. After stimulus offset, $m(3)$ continues as $m(5)$ and relaxes back to baseline. (c) $m(2)$ has slow rise and decay characteristics and is more sensitive to light. After stimulus offset, $m(2)$ continues as $m(4)$ and relaxes back to baseline. (d) A long latency small amplitude sustained positive component $m(6)$ occurs after stimulus offset at higher luminances.

hyperbolic function (Figure 7). At very dim intensities, only one component appeared to contribute to the signal ($m(4)$). However, with brighter intensities, two additional components become apparent, which are opposite in polarity ($m(5)$ negative and $m(6)$ positive). These offset components are a relaxation of $m(2)$ and $m(3)$ back to baseline. Indeed, the K_{50} values for $m(4)$ and $m(5)$ correlate well with those for $m(3)$ and $m(2)$ (compare Figure 7(d) to 6(c) and Figure 7(d) to 6(d), respectively, consistent with this proposal. This possibility is also supported by the findings that CNQX (reduction at A_{50} $50.7 \pm 1.5\%$ and A_{400} $56.1 \pm 4.1\%$, $P = 0.19$) and TPMPA (reduction at A_{50} $41.9 \pm 2.5\%$ and A_{400} $41.1 \pm 5.0\%$, $P = 0.40$) induce comparable reductions in amplitude for both onset (A_{50}) and negative offset components (A_{400}).

A corneal positive component (Figure 7(c)) apparent following stimulus offset (here designated $m(6)$) was only present in control eyes. Naarendorp and Williams [45] have shown that positive OFF-component arising after a light step in rat was abolished after inhibition of ionotropic glutamate

receptors, indicating an origin from hyperpolarizing bipolar cells. Our finding that the $m(6)$ was removed by CNQX, which inhibits ionotropic receptors, correlates well with this interpretation. However, TPMPA also altered this positive OFF-component. Hence, this component may also be modulated by disruption to inner retinal feedback as it is known that CNQX also modifies amacrine cell function.

5. Summary

Putative components $m(1)$ to $m(6)$ are plotted in Figure 8 to yield the composite PII waveform in response to a 256 ms light step. Based on our analysis, we believe that the isolated scotopic PII in rats contains at least three separate components. During a light step, there is an initial transient-ON response, which is made more transient by GABAC-mediated inhibitory processes. The majority of the PII for times greater

than ~100 ms reflects a sustained-ON component, likely arising from rod bipolar cells. After a light step, transient-ON and sustained-ON components relax to baseline. In addition, there is a positive sustained-OFF component that is likely to arise from the OFF-pathway, but it may also be modulated by GABA_C receptors. Thus, assessing the intensity-response functions at early and later times during a light step provides a means by which transient and sustained contributions to the rat PII ERG can be identified.

Conflict of Interests

The authors declare no conflict of interests.

References

- [1] L. J. Frishman, "Origins of the electroretinogram," in *Principles and Practice of Clinical Electrophysiology of Vision*, J. R. Hecknively and G. B. Arden, Eds., pp. 139–183, The MIT Press, London, UK, 2006.
- [2] R. Granit, "Components of the retinal action potential in mammals and their relations to the discharge in the optic nerve," *The Journal of Physiology*, vol. 77, pp. 207–238, 1933.
- [3] L. Cadetti, D. Tranchina, and W. B. Thoreson, "A comparison of release kinetics and glutamate receptor properties in shaping rod-cone differences in EPSC kinetics in the salamander retina," *The Journal of Physiology*, vol. 569, no. 3, pp. 773–788, 2005.
- [4] P. A. Sieving, K. Murayama, and F. Naarendorp, "Push-pull model of the primate photopic electroretinogram: a role for hyperpolarizing neurons in shaping the b-wave," *Visual Neuroscience*, vol. 11, no. 3, pp. 519–532, 1994.
- [5] A. G. Knapp and P. H. Schiller, "The contribution of on-bipolar cells to the electroretinogram of rabbits and monkeys. A study using 2-amino-4-phosphonobutyrate (APB)," *Vision Research*, vol. 24, no. 12, pp. 1841–1846, 1984.
- [6] B. Ekesten and K. Narfström, "Cone positive off-response in normal and dystrophic cats," *Documenta Ophthalmologica*, vol. 97, no. 1, pp. 9–21, 1998.
- [7] H. S. Weisinger, A. J. Vingrys, and A. J. Sinclair, "Electrodiagnostic methods in vision—part 2: origins of the flash ERG," *Clinical and Experimental Optometry*, vol. 79, no. 3, pp. 97–105, 1996.
- [8] J. F. Ashmore and D. R. Copenhagen, "Different postsynaptic events in two types of retinal bipolar cell," *Nature*, vol. 288, no. 5786, pp. 84–86, 1980.
- [9] G. B. Awatramani and M. M. Slaughter, "Origin of transient and sustained responses in ganglion cells of the retina," *Journal of Neuroscience*, vol. 20, no. 18, pp. 7087–7095, 2000.
- [10] S. H. DeVries, W. Li, and S. Saszik, "Parallel processing in two transmitter microenvironments at the cone photoreceptor synapse," *Neuron*, vol. 50, no. 5, pp. 735–748, 2006.
- [11] E. Hartveit, "Reciprocal synaptic interactions between rod bipolar cells and amacrine cells in the rat retina," *Journal of Neurophysiology*, vol. 81, no. 6, pp. 2923–2936, 1999.
- [12] J. H. Singer and J. S. Diamond, "Sustained Ca²⁺ entry elicits transient postsynaptic currents at a retinal ribbon synapse," *Journal of Neuroscience*, vol. 23, no. 34, pp. 10923–10933, 2003.
- [13] A. E. Chávez, J. H. Singer, and J. S. Diamond, "Fast neurotransmitter release triggered by Ca influx through AMPA-type glutamate receptors," *Nature*, vol. 443, no. 7112, pp. 705–708, 2006.
- [14] M. A. McCall, P. D. Lukasiewicz, R. G. Gregg, and N. S. Peachey, "Elimination of the $\rho 1$ subunit abolishes GABA_C receptor expression and alters visual processing in the mouse retina," *Journal of Neuroscience*, vol. 22, no. 10, pp. 4163–4174, 2002.
- [15] E. D. Eggers and P. D. Lukasiewicz, "GABA_A, GABA_C and glycine receptor-mediated inhibition differentially affects light-evoked signalling from mouse retinal rod bipolar cells," *The Journal of Physiology*, vol. 572, no. 1, pp. 215–225, 2006.
- [16] C. J. Dong and F. S. Werblin, "Temporal contrast enhancement via GABA_C feedback at bipolar terminals in the tiger salamander retina," *Journal of Neurophysiology*, vol. 79, no. 4, pp. 2171–2180, 1998.
- [17] C. J. Dong and W. A. Hare, "GABA_C feedback pathway modulates the amplitude and kinetics of ERG b-wave in a mammalian retina in vivo," *Vision Research*, vol. 42, no. 9, pp. 1081–1087, 2002.
- [18] E. D. Eggers and P. D. Lukasiewicz, "Receptor and transmitter release properties set the time course of retinal inhibition," *Journal of Neuroscience*, vol. 26, no. 37, pp. 9413–9425, 2006.
- [19] N. V. Kapousta-Bruneau, "Opposite effects of GABA_A and GABA_C receptor antagonists on the b-wave of ERG recorded from the isolated rat retina," *Vision Research*, vol. 40, no. 13, pp. 1653–1665, 2000.
- [20] A. Möller and T. Eysteinnsson, "Modulation of the components of the rat dark-adapted electroretinogram by the three subtypes of GABA receptors," *Visual Neuroscience*, vol. 20, no. 5, pp. 535–542, 2003.
- [21] R. Herrmann, S. J. Heflin, T. Hammond et al., "Rod vision is controlled by dopamine-dependent sensitization of rod bipolar cells by GABA," *Neuron*, vol. 72, no. 1, pp. 101–110, 2011.
- [22] Council NHaMR, *Australian Code of Practice for the Care and Use of Animals for Scientific Purposes*, Australian Government Publishing Service, Canberra, Australia, 2004.
- [23] B. V. Bui and B. Fortune, "Ganglion cell contributions to the rat full-field electroretinogram," *The Journal of Physiology*, vol. 555, no. 1, pp. 153–173, 2004.
- [24] T. M. Dang, T. I. Tsai, A. J. Vingrys, and B. V. Bui, "Post-receptoral contributions to the rat scotopic electroretinogram a-wave," *Documenta Ophthalmologica*, vol. 122, no. 3, pp. 149–156, 2011.
- [25] T. I. Tsai, B. V. Bui, and A. J. Vingrys, "Dimethyl sulphoxide dose-response on rat retinal function," *Documenta Ophthalmologica*, vol. 119, no. 3, pp. 199–207, 2009.
- [26] B. A. Berkowitz, R. A. Lukaszew, C. M. Mullins, and J. S. Penn, "Impaired hyaloidal circulation function and uncoordinated ocular growth patterns in experimental retinopathy of prematurity," *Investigative Ophthalmology and Visual Science*, vol. 39, no. 2, pp. 391–396, 1998.
- [27] T. Euler and R. H. Masland, "Light-evoked responses of bipolar cells in a mammalian retina," *Journal of Neurophysiology*, vol. 83, no. 4, pp. 1817–1829, 2000.
- [28] J. G. Robson, H. Maeda, S. M. Saszik, and L. J. Frishman, "In vivo studies of signaling in rod pathways of the mouse using the electroretinogram," *Vision Research*, vol. 44, no. 28, pp. 3253–3268, 2004.
- [29] J. Ludbrook, "Multiple comparison procedures updated," *Clinical and Experimental Pharmacology and Physiology*, vol. 25, no. 12, pp. 1032–1037, 1998.
- [30] S. M. Saszik, J. G. Robson, and L. J. Frishman, "The scotopic threshold response of the dark-adapted electroretinogram of the mouse," *The Journal of Physiology*, vol. 543, no. 3, pp. 899–916, 2002.

- [31] M. E. Breton and D. P. Montzka, "Empiric limits of rod photocurrent component underlying a-wave response in the electroretinogram," *Documenta Ophthalmologica*, vol. 79, no. 4, pp. 337–361, 1992.
- [32] B. V. Bui, H. S. Weisinger, A. J. Sinclair, and A. J. Vingrys, "Comparison of guinea pig electroretinograms measured with bipolar corneal and unipolar intravitreal electrodes," *Documenta Ophthalmologica*, vol. 95, no. 1, pp. 15–34, 1998.
- [33] M. L. Severns and M. A. Johnson, "The care and fitting of Naka-Rushton functions to electroretinographic intensity-response data," *Documenta Ophthalmologica*, vol. 85, no. 2, pp. 135–150, 1993.
- [34] J. G. Robson and L. J. Frishman, "Dissecting the dark-adapted electroretinogram," *Documenta Ophthalmologica*, vol. 95, no. 3–4, pp. 187–215, 1998.
- [35] P. D. Lukasiewicz, E. D. Eggers, B. T. Sagdullaev, and M. A. McCall, "GABA_C receptor-mediated inhibition in the retina," *Vision Research*, vol. 44, no. 28, pp. 3289–3296, 2004.
- [36] C. J. Dong and W. A. Hare, "Temporal modulation of scotopic visual signals by A17 amacrine cells in mammalian retina in vivo," *Journal of Neurophysiology*, vol. 89, no. 4, pp. 2159–2166, 2003.
- [37] M. M. Slaughter, "Inhibition in the retina," in *The Visual Neurosciences*, L. M. Chalupa and J. S. Werner, Eds., pp. 355–368, The MIT Press, London, UK, 2003.
- [38] Z. H. Pan and S. A. Lipton, "Multiple GABA receptor subtypes mediate inhibition of calcium influx at rat retinal bipolar cell terminals," *Journal of Neuroscience*, vol. 15, no. 4, pp. 2668–2679, 1995.
- [39] T. Euler and H. Wässle, "Different contributions of GABA_A and GABA_C receptors to rod and cone bipolar cells in a rat retinal slice preparation," *Journal of Neurophysiology*, vol. 79, no. 3, pp. 1384–1395, 1998.
- [40] E. D. Eggers, M. A. McCall, and P. D. Lukasiewicz, "Presynaptic inhibition differentially shapes transmission in distinct circuits in the mouse retina," *The Journal of Physiology*, vol. 582, no. 2, pp. 569–582, 2007.
- [41] S. M. Jones and M. J. Palmer, "Pharmacological analysis of the activation and receptor properties of the tonic GABA_CR current in retinal bipolar cell terminals," *PLoS One*, vol. 6, Article ID e24892, 2011.
- [42] B. Roska, E. Nemeth, and F. S. Werblin, "Response to change is facilitated by a three-neuron disinhibitory pathway in the tiger salamander retina," *Journal of Neuroscience*, vol. 18, no. 9, pp. 3451–3459, 1998.
- [43] N. Menger and H. Wässle, "Morphological and physiological properties of the A17 amacrine cell of the rat retina," *Visual Neuroscience*, vol. 17, no. 5, pp. 769–780, 2000.
- [44] P. J. Nixon, B. V. Bui, J. A. Armitage, and A. J. Vingrys, "The contribution of cone responses to rat electroretinograms," *Clinical and Experimental Ophthalmology*, vol. 29, no. 3, pp. 193–196, 2001.
- [45] F. Naarendorp and G. E. Williams, "The d-wave of the rod electroretinogram of rat originates in the cone pathway," *Visual Neuroscience*, vol. 16, no. 1, pp. 91–105, 1999.



Hindawi

Submit your manuscripts at
<http://www.hindawi.com>

