

Research Article

Anticancer Effects of the Marine Sponge *Lipastrotethya* sp. Extract on Wild-Type and p53 Knockout HCT116 Cells

Kiheon Choi,^{1,2} Hyun Kyung Lim,² Sung Ryong Oh,²
Woo-Hyun Chung,^{1,2} and Joohee Jung^{1,2}

¹College of Pharmacy, Duksung Women's University, Seoul 01369, Republic of Korea

²Innovative Drug Center, Duksung Women's University, Seoul 01369, Republic of Korea

Correspondence should be addressed to Joohee Jung; joohee@duksung.ac.kr

Received 13 October 2016; Revised 8 December 2016; Accepted 21 December 2016; Published 3 January 2017

Academic Editor: Hilal Zaid

Copyright © 2017 Kiheon Choi et al. This is an open access article distributed under the Creative Commons Attribution License, which permits unrestricted use, distribution, and reproduction in any medium, provided the original work is properly cited.

Interest in marine bioresources is increasing in the drug development sector. In particular, marine sponges produce a wide range of unique metabolites that enable them to survive in challenging environments, which makes them attractive sources of candidate pharmaceuticals. In previous study, we investigated over 40 marine specimens collected in Micronesia and provided by the Korean Institute of Ocean Science and Technology, for their antiproliferative effects on various cancer cell lines, and *Lipastrotethya* sp. extract (LSSE) was found to have a marked antiproliferative effect. In the present study, we investigated the mechanism responsible for its anticancer effect on wild-type p53 (WT) or p53 knockout (KO) HCT116 cells. LSSE inhibited cell viability and induced apoptotic cell death more so in HCT116 p53 KO cells than the WT. HCT116 WT cells treated with LSSE underwent apoptosis associated with the induction of p53 and its target genes. On the other hand, in HCT116 p53 KO cells, LSSE reduced mTOR and Bcl-2 and increased Beclin-1 and LC3-II protein levels, suggesting autophagy induction. These results indicate that the mechanisms responsible for the anticancer effect of LSSE depend on p53 status.

1. Introduction

Primitive marine animals produce a diverse range of metabolites that enable them to flourish in the marine environment, and in particular, the wealth of unique metabolites produced by marine sponges has attracted the attention of those trying to develop new drugs, including anticancer drugs. Several articles have been published on the biological activities of marine sponges [1, 2], but the mechanisms responsible have yet to be elucidated.

Generally, agents that induce apoptosis or autophagy are of interest as potential cancer therapies [3, 4]. Apoptosis is called programmed cell death [5], is a critical developmental process, and is essential for tissue remodeling. Cells undergoing apoptosis exhibit characteristic features, such as DNA fragmentation and cytoplasm shrinkage, and because cancer cell apoptosis causes tumor regression, it is utilized for chemotherapy [6].

Autophagy controls cellular homeostasis and survival [7]. Initially, autophagy was regarded a tumor-suppressive

mechanism, but it is also related to tumor progression [7, 8]. These conflicting effects of autophagy depend on cancer type and the microenvironment [9]. Thus, the cell death induced by autophagy could conceivably be utilized for anticancer therapy. On the other hand, p53 had an important anticancer effect and is functionally associated with apoptosis, autophagy, genome stability, and the cell cycle [10–12]. In a previous study, we found that the marine sponge *Lipastrotethya* sp. (Figure 1) inhibited the proliferation of cancer cells. In the present study, we investigated the mechanism responsible for its anticancer effects in HCT116 WT and HCT116 p53 KO cells.

2. Materials and Methods

2.1. Specimen Preparation. *Lipastrotethya* sp. extract was kindly provided by H.-S. Lee (Korea Institute of Ocean Science and Technology). The sample was collected by scuba diving in Chuuk state, Federated States of Micronesia, washed



FIGURE 1: Morphology of *Lipastrotethya* sp.

with sterilized artificial sea water three times, immediately frozen, and stored at -20°C until required. The lyophilized specimen was extracted with methanol and dichloromethane; then it was dissolved in sterile distilled water. Aliquots of the sample were stored at -20°C until required [13, 14].

2.2. Cell Culture. Human colorectal carcinoma HCT116 (expressed wild-type p53) and HCT116p53KO cells were cultured in Dulbecco's modified Eagle's medium (DMEM, GenDEPOT) supplemented with 10% fetal bovine serum (GenDEPOT) and 1% penicillin/streptomycin (GenDEPOT) in a humidified 5% CO_2 incubator. Cells used for assays were in the exponential growth phase.

2.3. Cytotoxicity. Cell cytotoxicities were determined using the Cell Counting Kit-8 (CCK-8, DOJINDO, Japan) as previously described [14]. Briefly, cells were seeded in 96-well plates at 3×10^3 cells/well, incubated for 24 h, and treated with LSSE for 48 h. CCK-8 reagent ($10 \mu\text{L}$) was added to each well and incubated for 3 h at 37°C . Absorbance at 450 nm was determined using a microplate reader (Infinite M200 PRO, TECAN, Austria).

2.4. Western Blot. Cells were seeded in a 6-well plate at $4\sim 6 \times 10^4$ cells/well. Samples were treated, added to each well, and incubated for 24 h. Cells were harvested and lysed in RIPA buffer (GenDEPOT) containing protease inhibitors (Xpert protease inhibitor cocktail solution, GenDEPOT) and phosphatase inhibitors (Xpert phosphatase inhibitor cocktail solution, GenDEPOT). Cell lysates were boiled in 5x sample buffer and separated by 10% SDS-PAGE. Proteins were transferred to PVDF membranes (Millipore) using a semidry electro blotter (Peqlab, Germany). Membranes were blocked with 5% skim milk in TBST (50 mM Tris-HCl pH 7.4, 150 mM NaCl, 0.1% Tween 20) and incubated sequentially with primary antibodies at 4°C , overnight. Membranes were then incubated for 1 h at room temperature and probed with secondary antibody. Immunoreactive proteins were visualized using ECL reagents and detected using Chemi-Doc. Antibodies and the used were p53 (1: 2000, Upstate), Hdm2/MDM2 (1: 1000, Bioss), p14/Arf (1: 1000, Cell Signaling), p21 (1: 2000, Millipore), β -actin (1: 5000, Sigma-Aldrich), Bax (1: 1000, Cell Signaling), caspase-9 (1: 1000, Cell Signaling), caspase-3

(1: 1000, Cell Signaling), cleavage caspase-3 (1: 1000, Cell Signaling), mTOR (1: 10,000, Abcam), PUMA (1: 1000), NOXA (1: 1000), Bcl-2 (1: 1000), Beclin-1 (1: 1000, Cell Signaling), LC3 (1: 2000, Abcam), anti-mouse IgG (H + L) horseradish peroxidase conjugate, and anti-rabbit IgG (H + L) horseradish peroxidase conjugate (1: 3000, Bio-Rad).

2.5. Apoptosis Assay. HCT116 and HCT116 p53KO cells were seeded in six-well plates and treated with LSSE for 24 h. Incubated cells were stained using the Annexin V-FLUOS staining kit (Roche, Mannheim, Germany). Apoptotic cells were counted under an optical microscope ($\times 20$, DMi8, Leica, Germany).

2.6. Statistical Analysis. Results are presented as means \pm standard deviations. Student's *t*-test was used to determine the significance of intergroup comparisons, and statistical significance was accepted for *p* value < 0.05 .

3. Results

3.1. Inhibition of Cell Viability by *Lipastrotethya* sp. Extract. HCT116 and HCT116 p53KO cells were treated with *Lipastrotethya* sp. extract (LSSE) for 48 h and cell viability was determined using Cell Counting Kit-8. LSSE dose-dependently reduced cell viability in both cell lines (Figure 2(a)). The IC_{50} of LSSE was 44.8 and $38 \mu\text{g}/\text{mL}$ in HCT116 and HCT116 p53KO cells, respectively. LSSE inhibited the viability of HCT116 p53KO cells more so than that of HCT116 cells. Furthermore, HCT116 and HCT116 p53KO cell numbers were decreased and their morphologies were changed after the treatment with LSSE for 24 h (Figure 2(b)). In particular, HCT116 p53KO cells treated with LSSE ($50 \mu\text{g}/\text{mL}$) were spherical and floated (black arrows) on culture medium. These results suggested that HCT116 p53KO cells were more sensitive to LSSE than HCT116 cells.

3.2. *Lipastrotethya* sp. Extract-Induced Apoptosis. To elucidate the mechanism underlying the cell death induced by LSSE, we measured apoptotic cell numbers using an Annexin V-FITC assay. As shown in Figure 3(a), Annexin V-positive (apoptotic) cells were dose-dependently increased by LSSE in both cell lines. Percentages of apoptotic cells to total cells showed LSSE ($50 \mu\text{g}/\text{mL}$) significantly induced early apoptosis in HCT116 cells (17.2%) and HCT116 p53KO cells (30.8%) (Figure 3(b)). These results indicate LSSE induced apoptosis in both cell lines (Figure 2). Furthermore, LSSE induced more apoptosis in HCT116 p53KO cells.

3.3. Different Anticancer Mechanism of *Lipastrotethya* sp. Extract on HCT116 and HCT116p53KO Cells. P53 is key player in apoptotic cell death. Above all, p53 expression was confirmed in two cell lines (Figure 4(a)). As was expected in HCT116 WT cells, LSSE dose-dependently increased p53 levels and increased the levels of the p53 targeted genes p21 (Figure 4(a)) as well as NOXA, PUMA, and Bax (Figure 4(b)). Accordingly, we investigated the expressions of caspase 9 and caspase 3. Cleaved caspase 9 and cleaved caspase 3 were

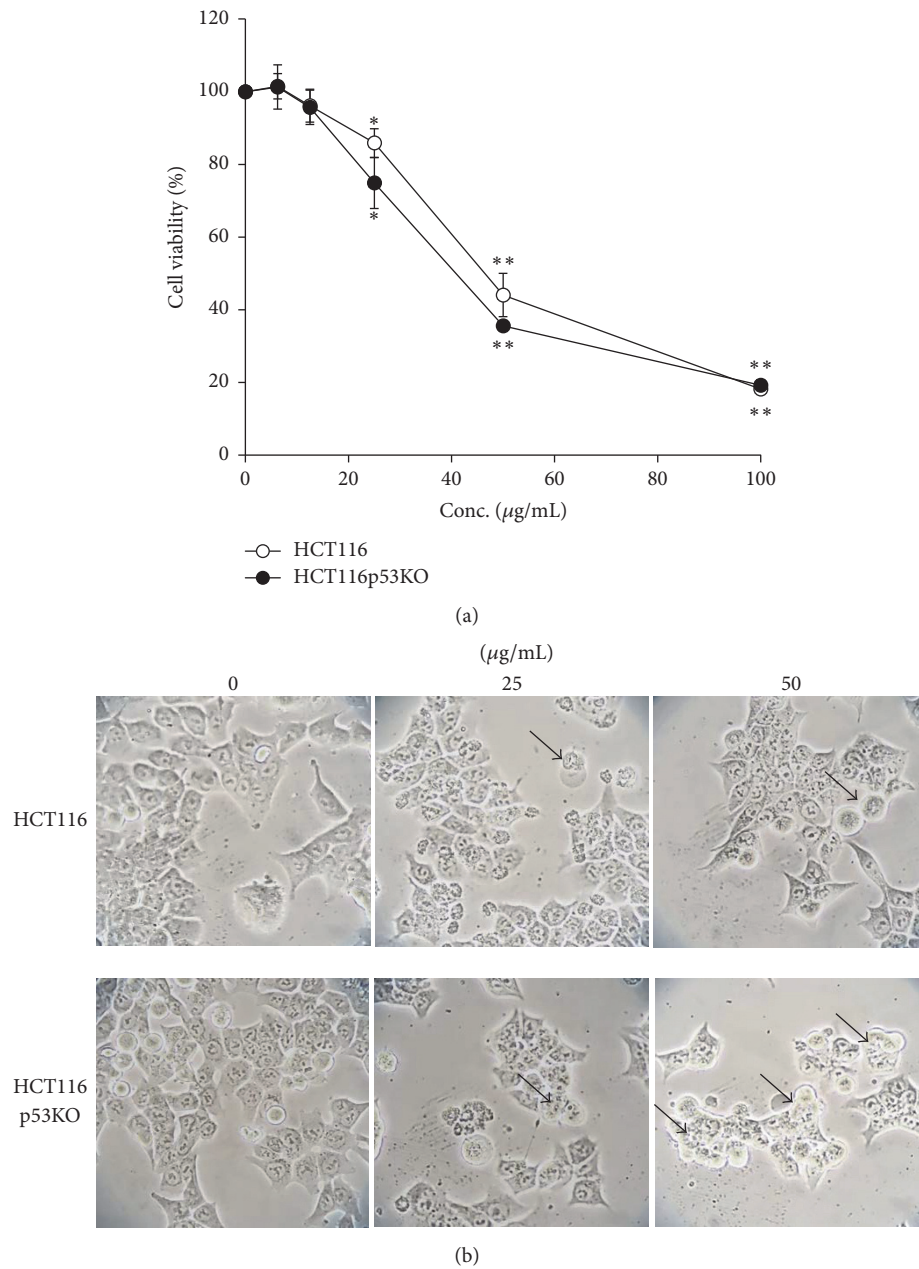


FIGURE 2: Inhibition of cell viability by *Lipastrotethya* sp. extract. (a) Cells treated with *Lipastrotethya* sp. extract were incubated for 48 h. Cell viability was determined by Cell Counting Kit-8 as described in Materials and Methods. Data showed mean \pm standard deviation ($n = 8$). ** t -test ($p < 0.01$). (b) Morphology of cells treated with *Lipastrotethya* sp. extract. Cells were incubated for 24 h and observed by microscope ($\times 40$). * t -test ($p < 0.05$).

slightly increased by the treatment of LSSE (Figure 4(b)). These results suggested that LSSE caused p53-mediated apoptosis through the intrinsic pathway in HCT116 cells. Additionally, we investigated the expression of p14/Arf and HDM2 as p53 regulators in HCT116 treated with LSSE (Figure 4(a)). The levels of p14 and HDM2 showed no difference between control and LSSE treatment. LSSE might induce p53 induction via the other pathway.

On the other hand, p53 deficiency was confirmed in HCT116 p53KO cells regardless of LSSE (Figure 4(a)). P21 as

one of p53-targeted genes is known to be a cyclin-dependent kinase inhibitor and arrests cell cycle [15]. Also, p21 can cause apoptosis via the p53-independent pathway [16]. Thus, we investigated p21 levels in HCT116 p53 KO cells after treatment with LSSE, but no induction of p21 was observed (Figure 4(a)). Nevertheless, because LSSE had a greater apoptotic effect in HCT116 p53 KO cells, we further investigated the mechanism of cell death in these cells. As shown in Figure 4(c), *Lipastrotethya* sp. suppressed mTOR and Bcl-2 levels and increased LC3-II and Beclin-1 levels. As these factors

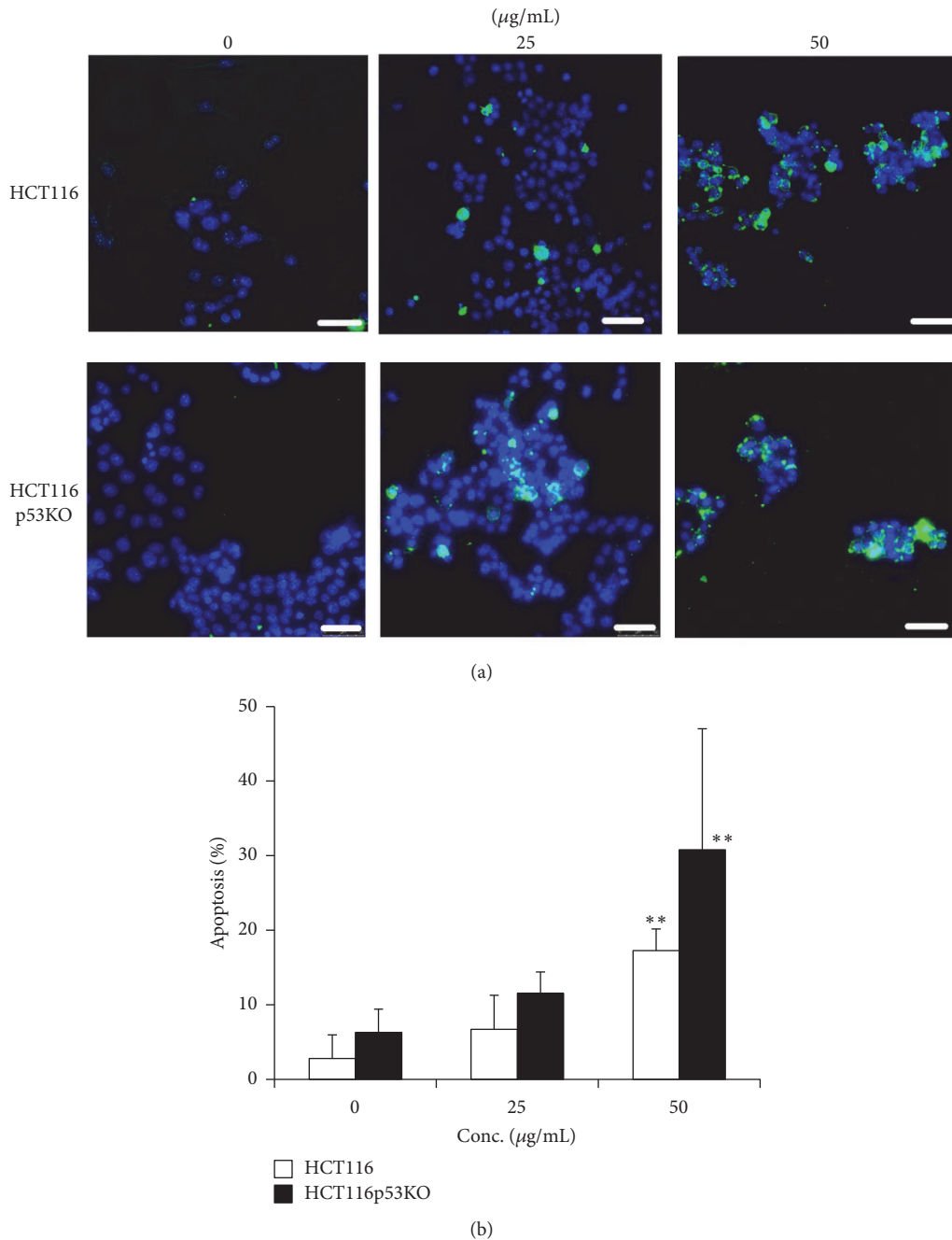


FIGURE 3: Induction of apoptosis by *Lipastrotethya* sp. extract. Cells treated with *Lipastrotethya* sp. extract were incubated for 24 h. Apoptotic cells were measured by Annexin V staining as described in Materials and Methods. (a) Green fluorescent cells show apoptotic cells. DAPI staining represents nucleus (Blue). Scale bar, 50 μ m. (b) Data showed mean \pm standard deviation ($n = 5$). ** t -test ($p < 0.01$).

are markers of autophagy, there results suggested that LSSE induced autophagy-related cell death in HCT116 p53KO cells.

4. Discussion

The present study was undertaken to investigate the mechanism responsible for the anticancer effect of the extract of *Lipastrotethya* sp. (LSSE) on wide-type p53 (WT) and p53 knockout (KO) HCT116 cells. LSSE had an antiproliferative

effect on HCT116 cells regardless of p53 expression, and interestingly, the IC_{50} of LSSE in HCT116 p53KO cells was lower than in HCT116 cells (Figure 1). Usually, induction of p53 expression triggers apoptosis and increases anticancer effects because p53 is a tumor-suppressor gene. In the present study, LSSE increased the expressions of p53-target genes like p21, PUMA, and NOXA and induced apoptosis *via* intrinsic pathway in p53 expressing WT HCT116 cells (Figure 4(b)). Furthermore, we investigated whether LSSE activates apoptosis

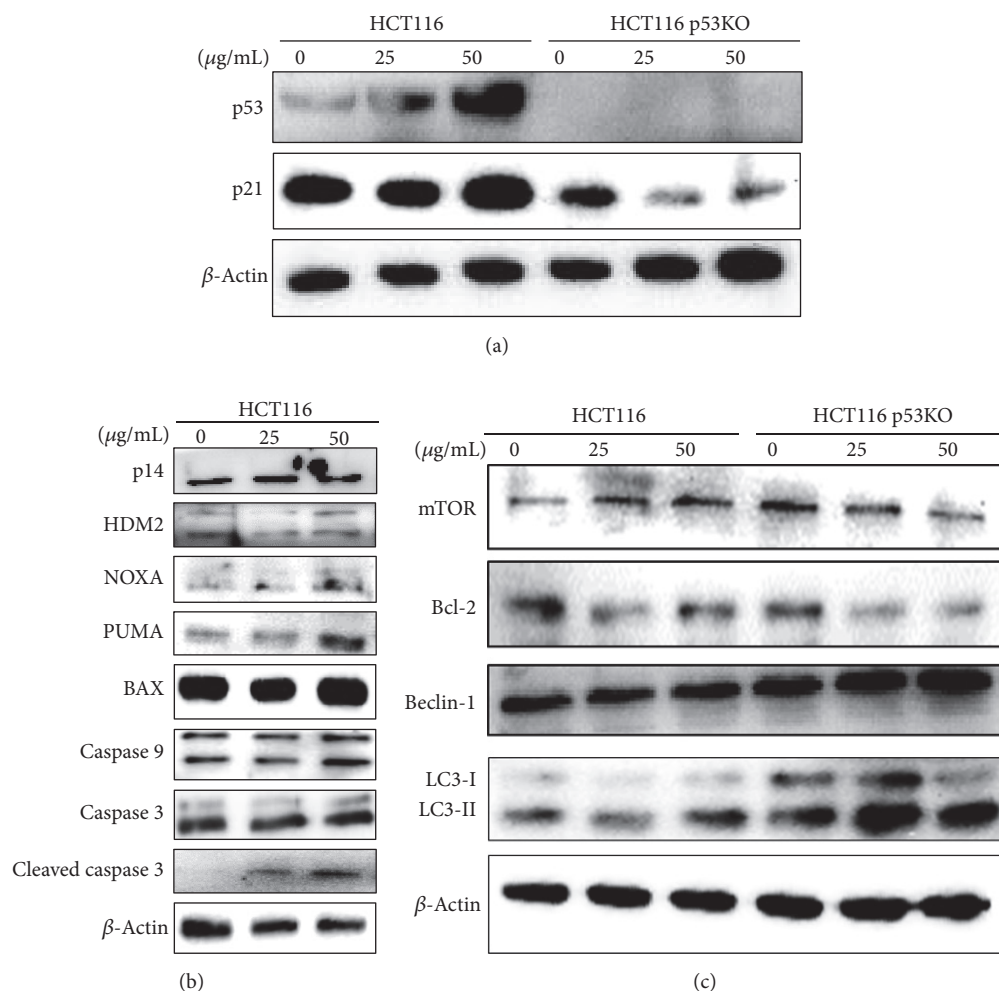


FIGURE 4: Effect of *Lipastrotethya* sp. extract on the expression of cell death-related proteins. Cells treated with *Lipastrotethya* sp. extract were incubated for 24 h. (a) p53 level and p21 level in HCT116 and HCT116 p53KO cells treated with *Lipastrotethya* sp. extract. (b) Apoptosis-related protein expression was analyzed by western blotting in HCT116 cells treated with *Lipastrotethya* sp. extract. (c) Autophagy-related protein expression was analyzed by western blotting in HCT116 and HCT116 p53KO cells treated with *Lipastrotethya* sp. extract.

via the Arf-HDM2/Mdm2-p53 tumor-suppressor pathway. P14/Arf is known to control the p53 activation *via* suppression of HDM2 [17]. However, our results showed no difference of p14 level between control and LSSE treatment as well as HDM2. In particular, HDM2 acts as both positive and negative regulator of p53 activity depending on stresses [18]. These results suggested that LSSE might induce the p53 level in response not to oncogenes stress but to DNA damage. Generally, deletion or loss of p53 is associated with chemoresistance and a poor prognosis [19]. Furthermore, cancer cells exhibiting p53 deletion or loss are aggressive and associated with poor survival [20]. Thus, new anticancer drugs are needed to treat aggressive or resistant cancers exhibiting p53 deletion or loss. In this study, LSSE triggered autophagy in HCT116 p53 KO cells by decreasing mTOR and increasing LC3-II protein levels (Figure 4(c)) and, thus, induced cell death (Figure 3). These results suggested that LSSE is good candidate treatment for p53-deficient colorectal cancer cells. Unfortunately, the active components of LSSE responsible

for cell death mediated autophagy in p53 KO cells were not identified. Nevertheless, several components such as nortriterpene glycosides of sarasinoides have been previously isolated from *Lipastrotethya* sp. and shown to be toxic to A549 cells [21]. In addition, triterpene galactosides of pouoside have also been identified in *Lipastrotethya* sp. [22]. Several triterpenoids isolated from marine animals have been shown to have anticancer activities [23] and this structure has the benefits for several disease including cancers [24]. Moreover, our findings regarding the anticancer effects of *Lipastrotethya* sp. concur with those of previous studies.

5. Conclusions

Our results indicate that the mechanisms responsible for the anticancer effect of LSSE depend on p53 status: that is, in the HCT116 WT cells LSSE induced apoptosis via the intrinsic pathway but in HCT116 p53 KO cells, LSSE induced an autophagic response.

Competing Interests

The authors declare that there is no conflict of interests regarding the publication of this paper.

Acknowledgments

The authors thank Dr. H.-S. Lee (Korea Institute of Ocean Science & Technology) for provision of specimens. This research was supported by Priority Research Centers Program through the National Research Foundation of Korea (NRF) funded by the Ministry of Education, Science and Technology (2016R1A6A1A03007648), a Grant from NRF (2014R1A1A3049498), and the Bio & Medical Technology Development Program of NRF funded by the Ministry of Science, ICT & Future Planning (2015M3A9B6074045).

References

- [1] Y. Sumii, N. Kotoku, A. Fukuda, T. Kawachi, M. Arai, and M. Kobayashi, "Structure-activity relationship and *in vivo* anti-tumor evaluations of dictyocerin-A and -C, hypoxia-selective growth inhibitors from marine sponge," *Marine Drugs*, vol. 13, no. 12, pp. 7419–7432, 2015.
- [2] D. T. A. Youssef, L. A. Shaala, and K. Z. Alshali, "Bioactive hydantoin alkaloids from the Red Sea marine sponge *Hemimycale arabica*," *Marine Drugs*, vol. 13, no. 11, pp. 6609–6619, 2015.
- [3] S.-Y. Wu, P.-J. Sung, Y.-L. Chang, S.-L. Pan, and C.-M. Teng, "Heteronemin, a spongean sesterterpene, induces cell apoptosis and autophagy in human renal carcinoma cells," *BioMed Research International*, vol. 2015, Article ID 738241, 13 pages, 2015.
- [4] H.-Y. Lee, K. J. Chung, I. H. Hwang et al., "Activation of p53 with ilimaquinone and ethylsmenoquinone, marine sponge metabolites, induces apoptosis and autophagy in colon cancer cells," *Marine Drugs*, vol. 13, no. 1, pp. 543–557, 2015.
- [5] M. R. Alison and C. E. Sarraf, "Apoptosis: a gene-directed programme of cell death," *Journal of the Royal College of Physicians of London*, vol. 26, no. 1, pp. 25–35, 1992.
- [6] T. G. Cotter, S. V. Lennon, J. G. Glynn, and S. J. Martin, "Cell death via apoptosis and its relationship to growth, development and differentiation of both tumour and normal cells," *Anticancer Research*, vol. 10, no. 5, pp. 1153–1159, 1990.
- [7] E. White, "The role for autophagy in cancer," *Journal of Clinical Investigation*, vol. 125, no. 1, pp. 42–46, 2015.
- [8] J. Y. Guo, B. Xia, and E. White, "Autophagy-Mediated tumor Promotion," *Cell*, vol. 155, no. 6, pp. 1216–1219, 2013.
- [9] A. Hjelmeland and J. Zhang, "Metabolic, autophagic, and mitochondrial activities in cancer initiation and progression," *Biomedical Journal*, vol. 39, no. 2, pp. 98–106, 2016.
- [10] E. Ratovitski, "Tumor protein (TP)-p53 members as regulators of autophagy in tumor cells upon marine drug exposure," *Marine Drugs*, vol. 14, no. 8, p. 154, 2016.
- [11] L. Zhang, D. Xie, X. Chen et al., "p53 Mediates colistin-induced autophagy and apoptosis in PC-12 cells," *Antimicrobial Agents and Chemotherapy*, vol. 60, no. 9, pp. 5294–5301, 2016.
- [12] K. M. Livesey, R. Kang, P. Vernon et al., "p53/HMGB1 complexes regulate autophagy and apoptosis," *Cancer Research*, vol. 72, no. 8, pp. 1996–2005, 2012.
- [13] J.-W. Lee, H.-S. Lee, J. Shin et al., "Suvanone analogs from a *Coscinoderma* sp. marine sponge and their cytotoxicities against human cancer cell lines," *Archives of Pharmacal Research*, vol. 38, no. 6, pp. 1005–1010, 2015.
- [14] H. K. Lim, W. Bae, H.-S. Lee, and J. Jung, "Anticancer activity of marine sponge *Hyrtios* sp. extract in human colorectal carcinoma RKO cells with different p53 status," *BioMed Research International*, vol. 2014, Article ID 413575, 5 pages, 2014.
- [15] A. L. Gartel and A. L. Tyner, "The role of the cyclin-dependent kinase inhibitor p21 in apoptosis," *Molecular Cancer Therapeutics*, vol. 1, no. 8, pp. 639–649, 2002.
- [16] H. Ko, J. M. Kim, S.-J. Kim, S. H. Shim, C. H. Ha, and H. I. Chang, "Induction of apoptosis by genipin inhibits cell proliferation in AGS human gastric cancer cells via Egr1/p21 signaling pathway," *Bioorganic and Medicinal Chemistry Letters*, vol. 25, no. 19, pp. 4191–4196, 2015.
- [17] E. Kim and J. Shohet, "Targeted molecular therapy for neuroblastoma: the ARF/MDM2/p53 axis," *Journal of the National Cancer Institute*, vol. 101, no. 22, pp. 1527–1529, 2009.
- [18] P.-J. Hamard and J. Manfredi, "Mdm2's dilemma: to degrade or to translate p53?" *Cancer Cell*, vol. 21, no. 1, pp. 3–5, 2012.
- [19] D. Maglic, S. Zhu, E. A. Fry et al., "Prognostic value of the hDMP1-ARF-Hdm2-p53 pathway in breast cancer," *Oncogene*, vol. 32, no. 35, pp. 4120–4129, 2013.
- [20] E. K. Markert, H. Mizuno, A. Vazquez, and A. J. Levine, "Molecular classification of prostate cancer using curated expression signatures," *Proceedings of the National Academy of Sciences of the United States of America*, vol. 108, no. 52, pp. 21276–21281, 2011.
- [21] J.-H. Lee, J.-E. Jeon, Y.-J. Lee et al., "Nortriterpene glycosides of the sarasinoid class from the sponge *Lipastrotethya* sp.," *Journal of Natural Products*, vol. 75, no. 7, pp. 1365–1372, 2012.
- [22] J.-H. Lee, K. H. Jang, Y.-J. Lee et al., "Triterpene galactosides of the pouoside class and corresponding aglycones from the sponge *Lipastrotethya* sp.," *Journal of Natural Products*, vol. 74, no. 12, pp. 2563–2570, 2011.
- [23] Y.-X. Li, S. W. A. Himaya, and S.-K. Kim, "Triterpenoids of marine origin as anti-cancer agents," *Molecules*, vol. 18, no. 7, pp. 7886–7909, 2013.
- [24] J. M. R. Patlolla and C. V. Rao, "Triterpenoids for cancer prevention and treatment: current status and future prospects," *Current Pharmaceutical Biotechnology*, vol. 13, no. 1, pp. 147–155, 2012.



Hindawi
Submit your manuscripts at
<https://www.hindawi.com>

