

Research Article

The Use of Cubic Splines in the Numerical Solution of Fractional Differential Equations

W. K. Zahra¹ and S. M. Elkholy²

¹ *Department of Physics and Engineering Mathematics, Faculty of Engineering, Tanta University, 31521 Tanta, Egypt*

² *Department of Engineering Physics and Mathematics, Faculty of Engineering, Kafr El Sheikh University, Kafr El Sheikh, Egypt*

Correspondence should be addressed to W. K. Zahra, waheed_zahra@yahoo.com

Received 31 March 2012; Revised 8 May 2012; Accepted 23 May 2012

Academic Editor: Manfred Moller

Copyright © 2012 W. K. Zahra and S. M. Elkholy. This is an open access article distributed under the Creative Commons Attribution License, which permits unrestricted use, distribution, and reproduction in any medium, provided the original work is properly cited.

Fractional calculus became a vital tool in describing many phenomena appeared in physics, chemistry as well as engineering fields. Analytical solution of many applications, where the fractional differential equations appear, cannot be established. Therefore, cubic polynomial spline-function-based method combined with shooting method is considered to find approximate solution for a class of fractional boundary value problems (FBVPs). Convergence analysis of the method is considered. Some illustrative examples are presented.

1. Introduction

Fractional calculus attracted the attention of many researchers because it has recently gained popularity in the investigation of dynamical systems. There are many applications of fractional derivative and fractional integration in several complex systems such as physics, chemistry, fluid mechanics, viscoelasticity, signal processing, mathematical biology, and bioengineering, and various applications in many branches of science and engineering could be found [1–16].

One of the applications where fractional differential equation appears is the equation describing the motion of fluids, which are encountered downhole during the process of oil well logging, through a device that has been designed to measure fluids viscosity. In the oil exploration industry, the fluid viscosity can indicate the permeability of the reservoir formation, its flow characteristics, and the commercial value of the reservoir fluid. So, viscometers are required to measure the thermophysical properties of these fluids. It is hard to

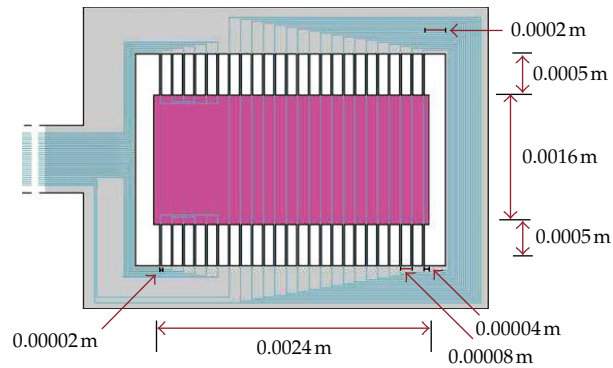


Figure 1: MEMS instrument.

simulate reservoir conditions in a laboratory because a reservoir can exhibit temperatures of 20–200°C and pressures of 5–200 MPa. Therefore, a microelectromechanical system (MEMS) instrument has been designed to measure the viscosity of fluids which contains only a single moving part (all others being electrical). This device can operate at high ambient pressures, and the behavior of the device may be analyzed in a manner that allows its design to be optimised see Figure 1, [12, 17].

The fluid flow is governed by the Navier-Stokes equations:

$$q_t + (q \cdot \nabla)q = -\frac{1}{\rho} \nabla p + \nu \nabla^2 q, \quad (1.1)$$

$$\nabla \cdot q = 0,$$

where q denotes the fluid velocity, p denotes pressure, t denotes time, and ρ and ν are the fluid density and kinematic viscosity, respectively. Then, it was found that the equation governing the motion of the fluid through the instrument is

$$y''(x) + k\sqrt{\pi} D^{1.5} y(x) + \alpha y'(x) = 0, \quad y(0) = 1, \quad y'(0) = 0. \quad (1.2)$$

The above fractional differential equation is well known as Bagley-Torvik equation when $\alpha = 0$ which appears in modeling the motion of a rigid plate immersed in a Newtonian fluid [12, 17].

Several methods have been proposed to obtain the analytical solution of fractional differential equations (FDEs) such as Laplace and Fourier transforms, eigenvector expansion, method based on Laguerre integral formula, direct solution based on Grunewald Letnikov approximation, truncated Taylor series expansion, and power series method [9, 18–23]. There are also several methods have recently been proposed to solve FDEs numerically such as fractional Adams-Moulton methods, explicit Adams multistep methods, fractional difference method, decomposition method, variational iteration method, least squares finite element solution, extrapolation method, and the Kansa method which is meshless, easy-to-use, and has been used to handle a broad range of partial differential equation models [24–31]. Also, the authors considered the numerical solution of the fractional boundary value problem

(FBVP) $D^{2-\alpha}y(x) + p(x)y = g(x)$, $0 \leq \alpha < 1$, $x \in [a, b]$, with Dirichlet boundary conditions using quadratic polynomial spline, [32].

The existence of at least one solution of fractional problems can be seen in [3, 11, 14, 16, 31].

We consider the numerical solution of the following fractional boundary value problem (FBVPs):

$$y''(x) + \theta D^\alpha y + \beta y = f(x), \quad m-1 \leq \alpha < m, \quad x \in [a, b]. \quad (1.3)$$

Subject to boundary conditions:

$$y(a) = y_a, \quad y(b) = y_b, \quad (1.4)$$

where the function $f(x)$ is continuous on the interval $[a, b]$ and the operator D^α represents the Caputo fractional derivative. Where, the Caputo fractional derivative is [22]

$$D^\alpha y(x) = \frac{1}{\Gamma(m-\alpha)} \int_0^x (x-s)^{m-\alpha-1} y^{(m)}(s) ds, \quad \alpha > 0, \quad m-1 < \alpha < m, \quad (1.5)$$

when $\alpha = 0$, (1.3) is reduced to the classical second order boundary value problem.

2. Method of Solution

The following is a brief derivation of the algorithm used to solve problem (1.3)-(1.4). The method of solution presented in the following section is based on cubic spline approach combined with shooting method.

2.1. Cubic Spline Solution for FDEs

In order to develop cubic spline approximation for the fractional differential equation (1.3)-(1.4), we would discuss the solution of (1.3) as initial value problem of the form:

$$y''(x) + \theta D^\alpha y + \beta y = f(x), \quad 0 \leq \alpha < 1, \quad x \in [a, b], \quad (2.1)$$

$$y(a) = y_a, \quad y'(a) = y'_a. \quad (2.2)$$

Let

$$\Delta_n : x_i = a + ih, \quad x_0 = a, \quad x_n = b, \quad h = \frac{(b-a)}{n}, \quad i = 0, 1, 2, \dots, n-1 \quad (2.3)$$

be a partition of $[a, b]$ which divides the interval into n -equal parts.

Cubic spline approximation will be built in each subinterval $[a + ih, a + (i + 1)h]$ to approximate the solution of (2.1)-(2.2). Starting with the first interval $[a, a + h]$, consider that the cubic polynomial spline segment $S_0(x)$ has the form:

$$S_0(x) = a_0 + b_0(x - a) + \frac{c_0}{2}(x - a)^2 + \frac{d_0}{6}(x - a)^3, \quad (2.4)$$

where $a_0, b_0, c_0,$ and d_0 are constants to be determined. It is straightforward to check:

$$S_0(a) = a_0 = y_a, \quad S'_0(a) = b_0 = y'_a, \quad S''_0(a) = c_0 = y''(a) = f(a) - \beta y_a. \quad (2.5)$$

By construction, (2.4) satisfies (2.1) for $x = a$. Then, for complete determination of the spline in the first interval, we have to find d_0 . From (2.4), we have

$$S''_0(x) = c_0 + d_0(x - a). \quad (2.6)$$

We will impose that the spline be a solution of the problem (2.1) at the point $x = a + h$. Hence, we obtain

$$S''_0(a + h) = y''(a + h) = f(a + h) - \beta y(a + h) - \theta D^\alpha y|_{x=a+h}. \quad (2.7)$$

From (2.6), (2.7) and using (2.4) we obtain:

$$\left(h + \frac{\beta h^3}{6}\right)d_0 = f(a + h) - \beta \left(y_a + y'_a h + \frac{h^2}{2} y''(a)\right) - y''(a) - \theta D^\alpha y|_{x=a+h}. \quad (2.8)$$

Then the spline is fully determined in the first subinterval. In the next subinterval $[a+h, a+2h]$ the cubic spline segment $S_1(x)$ has the form:

$$S_1(x) = S_0(a + h) + S'_0(a + h)(x - (a + h)) + \frac{S''_0(a + h)}{2}(x - (a + h))^2 + \frac{d_1}{6}(x - (a + h))^3. \quad (2.9)$$

From which we get

$$S''_1(x) = S''_0(a + h) + d_1(x - (a + h)). \quad (2.10)$$

Taking into consideration that this cubic spline is of class $C^2([a, a + h] \cup [a + h, a + 2h])$, and again all of the coefficients of $S_1(x)$ are determined with exception of d_1 . It is easy to check that the spline $S_1(x)$ be a solution of the problem (2.1) at the point $x = a + h$, then for determining d_1 we will impose that the spline be a solution of the problem (2.1) at the point $x = a + 2h$. Hence, by repeating the previous procedure we obtain

$$S''_1(a + 2h) = y''(a + 2h) = f(a + 2h) - \beta y(a + 2h) - \theta D^\alpha y|_{x=a+2h}. \quad (2.11)$$

Substituting by $x = a + 2h$ into (2.10) and equating the result by (2.11), we get

$$\begin{aligned} & \left(h + \frac{\beta h^3}{6} \right) d_1 \\ & = f(a + 2h) - \beta \left(S_0(a + h) + hS'_0(a + h) + \frac{h^2}{2} S''_0(a + h) \right) - S''_0(a + h) - \theta D^\alpha y \Big|_{x=a+2h}. \end{aligned} \tag{2.12}$$

By this way the spline is totally determined in the subinterval $[a + h, a + 2h]$. Iterating this process, let us consider that the cubic spline is constructed until the subinterval $[a + (i - 1)h, a + ih]$ then we can define it in the next the subinterval $[a + ih, a + (i + 1)h]$ as:

$$S_i(x) = \varphi_i + \frac{d_i}{6} (x - (a + ih))^3, \tag{2.13}$$

where

$$\varphi_i(x) = \sum_{k=0}^2 \frac{1}{k!} S_{k-1}^{(k)}(a + ih) (x - (a + ih))^k. \tag{2.14}$$

Then the cubic spline $S(x) \in C^2(\cup_{j=0}^i [a + j, a + (j + 1)h])$ and easy to check that (2.13) verifies the differential equation (2.1) at the point $x = a + ih$. The constant d_i can be determined by imposing that the spline be a solution of the problem (2.1) at the point $x = a + (i + 1)h$. Hence, we obtain

$$\left(h + \frac{\beta h^3}{6} \right) d_i = f(a + (i + 1)h) - \beta \varphi_i(a + (i + 1)h) - \varphi_i''(a + (i + 1)h) - \theta D^\alpha y \Big|_{x=a+(i+1)h}. \tag{2.15}$$

From (2.14)-(2.15), the spline approximation for the solutions of (1.3) and (2.1) at $x_i = a + ih, i = 1, 2, \dots, n$ can be written in the following form:

$$\begin{aligned} S_i(x_{i+1}) &= \sum_{k=0}^2 \frac{1}{k!} h^k S_{i-1}^{(k)}(a + ih) + \frac{h^3}{6} d_i, & d_i &= \frac{1}{h} [S_i''(a + (i + 1)h) - S_{i-1}''(a + ih)], \\ & & & i = 0, 1, 2, \dots \end{aligned} \tag{2.16}$$

Lemma 2.1. Let $y \in C^4[a, b]$ then the error bound associated with (2.16) is $|e(x)| = O(h^2)$.

Proof. For each subinterval $[a + ih, a + (i + 1)h]$, the error terms are

$$e_{i+1} = y(x_{i+1}) - S_i(x_{i+1}), \quad i = 0, 1, 2, \dots, n - 1. \tag{2.17}$$

Using, Taylor expansion for $y(x_{i+1})$, we get

$$y(a + (i + 1)h) = y(a + ih) + hy'(a + ih) + \frac{h^2}{2}y''(a + ih) + \frac{h^3}{6}y'''(a + ih) + O(h^4). \quad (2.18)$$

Then (2.16) and (2.18) led to

$$\begin{aligned} e_{i+1} &= y(x_{i+1}) - S_i(x_{i+1}) \\ &= e_i + he'_i + \left(\frac{h^2}{2}\right)e''_i + \left(\frac{h^3}{6}\right)e'''_i + O(h^4), \quad i = 1, 2, \dots, n-1. \end{aligned} \quad (2.19)$$

For the subinterval $[a, a + h]$:

$$\begin{aligned} e_1 &= y(a + h) - S_0(a + h) = \frac{h^3[y'''(a) - d_0]}{6} + O(h^4) = O(h^3), \\ e'_1 &= y'(a + h) - S'_0(a + h) = O(h^2), \\ e''_1 &= y''(a + h) - S''_0(a + h) = O(h). \end{aligned} \quad (2.20)$$

Then, for $i = 1$ in (2.19), we get:

$$\begin{aligned} e_2 &= y(a + 2h) - S_1(a + 2h) = e_1 + he'_1 + \left(\frac{h^2}{2}\right)e''_1 + \left(\frac{h^3}{6}\right)e'''_1 + O(h^4) \\ &= e_1 + O(h^3) = O(h^3). \end{aligned} \quad (2.21)$$

In general, it can be written as $e_{i+1} = e_i + O(h^3)$. Then, it can be proved that $|e(x)| = nO(h^3) = O(h^2)$. \square

Cubic spline method presented above can be extended to solve fractional boundary value problems by implementing the shooting method. FBVPs (1.3) with boundary conditions (1.4) will be solved as initial value problem with two guesses z_1 and z_2 for $y'(a)$. Using linear interpolation between $y(b)$ in the two cases gives the next guess z_3 . Then problem (1.3) is resolved again with this new guess and so on.

2.2. Numerical Approximation of Fractional Term

The algorithm used for solving fractional differential equation is based on transforming the fractional derivative into a system of ordinary differential equation. Firstly, the Caputo fractional derivative for $y(x)$ can be written as:

$$D^\alpha y(x) = \frac{x^{m-\alpha-1}}{\Gamma(m-\alpha)} \int_0^x \left(1 - \frac{s}{x}\right)^{m-\alpha-1} y^{(m)}(s) ds, \quad \alpha > 0, m-1 < \alpha < m. \quad (2.22)$$

We now use the binomial formula [9]:

$$(1+z)^\lambda = \sum_{p=0}^{\infty} \binom{\lambda}{p} z^p = \sum_{p=0}^{\infty} \frac{(-1)^p \Gamma(p-\lambda)}{\Gamma(-\lambda)p!} z^p, \quad |z| < 1. \quad (2.23)$$

With (2.23) the expression for $D^\alpha y(x)$ can be written as follows with $\lambda = m - \alpha - 1$:

$$D^\alpha y(x) = \frac{x^\lambda}{\Gamma(\lambda+1)} \int_0^x y^{(m)}(s) \left[\sum_{p=0}^{\infty} \frac{\Gamma(p-\lambda)}{\Gamma(-\lambda)p!} \left(\frac{s}{x}\right)^p \right] ds, \quad \alpha > 0, \quad m-1 < \alpha < m. \quad (2.24)$$

The integrals:

$$v_p = \int_0^x s^p y^{(m)}(s) ds, \quad p = 0, 1, 2, \dots \quad (2.25)$$

are solutions to the following system of differential equations:

$$v_p' = x^p y^{(m)}(x), \quad v_p(0) = 0, \quad p = 0, 1, 2, \dots \quad (2.26)$$

According to (2.24)–(2.26) the expression for $D^\alpha y(x)$ can be rewritten as:

$$D^\alpha y(x) = \frac{x^{m-\alpha-1}}{\Gamma(m-\alpha)} \sum_{p=0}^{\infty} \left(\frac{\Gamma(p-m+\alpha+1)}{\Gamma(-m+\alpha+1)p!x^p} v_p \right), \quad \alpha > 0, \quad m-1 < \alpha < m, \quad (2.27)$$

with v_p satisfying (2.26), (2.27) will represent the fundamental relation used in numerical representation of the fractional term in fractional differential equations. In application, we will use finite number of terms N suitably chosen, so (2.27) will be

$$D^\alpha y(x) \cong \frac{x^{m-\alpha-1}}{\Gamma(m-\alpha)} \sum_{p=0}^N \left(\frac{\Gamma(p-m+\alpha+1)}{\Gamma(-m+\alpha+1)p!x^p} v_p \right), \quad \alpha > 0, \quad m-1 < \alpha < m. \quad (2.28)$$

3. Convergence Analysis

Let S_Δ^3 be the space of cubic splines with respect to Δ and with smoothness $C^2[a, b]$. Also, let us denote by $y_\Delta(x)$ the cubic spline approximation to $y(x)$. This implies that $y_\Delta \in S_\Delta^3$ which can be written as $y_\Delta = S_i(x)$, $i = 0, 1, 2, \dots, n-1$.

Without loss of generality, we will consider problem (1.3) with homogeneous Dirichlet boundary conditions [33]:

$$y(a) = 0, \quad y(b) = 0. \quad (3.1)$$

It will be assumed that y and y_Δ satisfy these boundary conditions.

If we assume that the BVP $y''(x) = 0$ along with boundary conditions (3.1) has a unique solution then there is a Green's function $G(x, s)$ for the problems

$$z = y'', \quad z_{\Delta} = y''_{\Delta}, \quad (3.2)$$

where

$$y(x) = \int_a^b G(x, s)z(s)ds = Gz(x), \quad (3.3)$$

$$y_{\Delta}(x) = \int_a^b G(x, s)z_{\Delta}(s)ds = Gz_{\Delta}(x), \quad (3.4)$$

where

$$G(x, s) = \begin{cases} (x-s) - \frac{(x-a)(b-s)}{(b-a)}, & a \leq s \leq x \leq b, \\ -\frac{(x-a)(b-s)}{(b-a)}, & a \leq x \leq s \leq b, \end{cases} \quad (3.5)$$

G is a compact operator, since $G(x, s)$ is continuous in $[a, b] \times [a, b]$, [33].

Lemma 3.1. Consider the following:

$$D^{\alpha}y(x) = D^{\alpha} \int_a^b G(x, s)z(s)ds = \int_a^b (D^{\alpha}G(x, s))z(s)ds = D^{\alpha}Gz(x). \quad (3.6)$$

Proof. From the Caputo fractional derivative $D^{\alpha}y(x)$, we get

$$\begin{aligned} D^{\alpha}y(x) &= D^{\alpha} \int_{s=a}^{s=b} G(x, s)z(s)ds \\ &= \frac{1}{\Gamma(m-\alpha)} \int_{t=a}^{t=x} (x-t)^{m-\alpha-1} \left(\frac{d^m}{dt^m} \left[\int_{s=a}^{s=b} G(t, s)z(s)ds \right] \right) dt. \end{aligned} \quad (3.7)$$

Using the principle of differentiation under the integral sign, for the function $g(x)$ with the form:

$$g(x) = \int_{\delta_1(x)}^{\delta_2(x)} \Phi(x, t)dt. \quad (3.8)$$

We have that

$$\frac{dg(x)}{dx} = \int_{\delta_1(x)}^{\delta_2(x)} \frac{\partial}{\partial x} \Phi(x, t)dt + \Phi(x, \delta_2) \frac{d\delta_2}{dx} - \Phi(x, \delta_1) \frac{d\delta_1}{dx}, \quad (3.9)$$

where the functions $\Phi(x, t)$ and $(\partial/\partial x)\Phi(x, t)$ are both continuous in both t and x in some region of the (t, x) plane, including $\delta_1 \leq t \leq \delta_2$ and $x_0 \leq x \leq x_1$, then we can deduce that

$$\frac{d^m}{dt^m} \left[\int_a^b G(t, s)z(s)ds \right] = \int_a^b \frac{\partial^m}{\partial t^m} G(t, s)z(s)ds. \tag{3.10}$$

Then we have

$$D^\alpha y(x) = \frac{1}{\Gamma(m - \alpha)} \int_{t=a}^{t=x} (x - t)^{m-\alpha-1} \left[\int_{s=a}^{s=b} \frac{\partial^m}{\partial t^m} G(t, s)z(s)ds \right] dt. \tag{3.11}$$

Changing the order of integration leads to

$$\begin{aligned} D^\alpha y(x) &= \frac{1}{\Gamma(m - \alpha)} \int_{s=a}^{s=b} \left[\int_{t=a}^{t=x} (x - t)^{m-\alpha-1} \frac{\partial^m}{\partial t^m} G(t, s)z(s)dt \right] ds, \\ D^\alpha y(x) &= \int_{s=a}^{s=b} \left[\frac{1}{\Gamma(m - \alpha)} \int_{t=0}^{t=x} (x - t)^{m-\alpha-1} \frac{\partial^m}{\partial t^m} G(t, s)dt \right] z(s)ds, \\ D^\alpha y(x) &= \int_a^b (D^\alpha G(x, s))z(s)ds = D^\alpha Gz(x), \end{aligned} \tag{3.12}$$

and this proves the lemma. □

Substituting from (3.2)–(3.4) and (3.6) into (1.3) leads to

$$z(x) + \theta D^\alpha Gz(x) + \beta Gz(x) = f(x). \tag{3.13}$$

We will introduce the operator $Ky(x)$ defined by:

$$Ky(x) = \theta \int_a^b (D^\alpha G(x, s))y(s)ds + \beta \int_a^b G(x, s)y(s)ds, \tag{3.14}$$

which maps $C^2[a, b]$ to $C[a, b]$. We also introduce a linear projection P_Δ that maps $C^2[a, b]$ to S_Δ^1 piecewise linear interpolation at the grid points $\{x_i\}_0^n$. Then (3.13) can be rewritten as:

$$z(x) + Kz(x) = f(x), \tag{3.15}$$

and we have also:

$$z_\Delta(x) + Kz_\Delta(x) = f(x). \tag{3.16}$$

By the definition of P_Δ [33], $\|P_\Delta z - z\|_\infty$ converges to zero as h approaches zero for continuous function $z(x)$. This in turn implies that $\|P_\Delta K - K\|_\infty$ converges to zero as h approaches zero.

Theorem 3.2 (see [34]). *If there is N_0 large enough, then $\{(I + P_\Delta K)^{-1} : n \geq N_0\}$ exists and consists of a sequence of bounded linear operators. Which means, for a constant δ independent of N_0 and $z \in C[a, b]$, if $n \geq N_0$, then $\|(I + P_\Delta K)^{-1}z\| \leq \delta\|z\|$.*

Theorem 3.3. *Assuming that*

(H1) *the BVP (1.3) along with boundary conditions (3.1) has a unique solution in $C^2[a, b]$,*

(H2) *the BVP $y''(x) = 0$ along with boundary conditions (3.1) has a unique solution,*

then, for some $n \geq N_0$ one has

$$\begin{aligned} \|y - y_\Delta\|_\infty &\leq c_k \|y^{(k+2)}\| h^k, \quad \forall y \in C^{k+2}[a, b], \quad 1 \leq k \leq 2, \\ \|y - y_\Delta\|_\infty &\leq c_0 \psi(y'', h), \quad \forall y \in C^2[a, b], \end{aligned} \quad (3.17)$$

where c_k is a constant and independent of y, h and $\psi(y'', h) = \sup\{|y''(\tau + \tilde{h}) - y''| : \tau, \tau + \tilde{h} \in [a, b], \tilde{h} \leq h\}$.

Proof. Let $z(x)$ be a solution for (3.15) and $y(x)$ be the solution of (1.3)-(1.4). Then, operating on both sides of (3.15) by the linear projection operator P_Δ gives

$$P_\Delta z(x) + P_\Delta Kz(x) = P_\Delta f(x). \quad (3.18)$$

Adding $z(x)$ to both sides of (3.18) and subtracting (3.16) from the results lead to

$$(I + P_\Delta K)(z(x) - z_\Delta(x)) = z(x) - P_\Delta z(x). \quad (3.19)$$

Operating on both sides of (3.19) by $(I + P_\Delta K)^{-1}$ leads to

$$z(x) - z_\Delta(x) = (I + P_\Delta K)^{-1}(z(x) - P_\Delta z(x)). \quad (3.20)$$

Operating on both sides of (3.20) by the operator G and using (3.2)–(3.4), we get

$$y(x) - y_\Delta(x) = G(I + P_\Delta K)^{-1}(y''(x) - P_\Delta y''(x)). \quad (3.21)$$

Since the operator G is bounded and from Theorem 3.2 the operator $(I + P_\Delta K)^{-1}$ is also bounded, then

$$\|y(x) - y_\Delta(x)\| \leq \|G\| \|(I + P_\Delta K)^{-1}\| \|y''(x) - P_\Delta y''(x)\|. \quad (3.22)$$

From [33], we have that

$$\|y''(x) - P_\Delta y''(x)\| \leq c_k \|y^{(k+2)}\| h^k, \quad \forall y \in C^{k+2}[a, b], \quad 1 \leq k \leq 2, \quad (3.23)$$

$$\|y - y_\Delta\|_\infty \leq c_0 \psi(y'', h), \quad \forall y \in C^2[a, b], \quad (3.24)$$

where, $\psi(y'', h) = \sup\{|y''(\tau + \tilde{h}) - y''| : \tau, \tau + \tilde{h} \in [a, b], \tilde{h} \leq h\}$.

Table 1: Numerical results of Example 4.1.

x	k=1		k = 1/5		k = 0.005	
	Analytical solution	Approx solution	Analytical solution	Approx solution	Analytical solution	Approx solution
0	1	1	1	1	1	1
0.125	0.99437	0.993126	0.992747	0.992391	0.992212	0.992212
0.250	0.979919	0.974802	0.971922	0.970148	0.968995	0.968983
0.375	0.958424	0.944545	0.938558	0.933609	0.930733	0.930674
0.500	0.930957	0.904813	0.893615	0.883958	0.878038	0.877899
0.625	0.898335	0.857938	0.838087	0.822499	0.811743	0.811497
0.750	0.861241	0.805442	0.773025	0.750552	0.732892	0.732514
0.875	0.820277	0.748795	0.699540	0.669584	0.642719	0.642193
1	0.775989	0.688838	0.618798	0.580978	0.542633	0.541945

Substituting from Theorem 3.2 and (3.23) into (3.22) completes the proof. □

4. Numerical Examples

We will consider some numerical examples illustrating the solution using cubic spline methods. All calculations are implemented with MATLAB 7, and we used implicit Adams-Bashforth three-step method in approximating the fractional term.

Example 4.1. Consider the initial value problem:

$$y''(x) + k\sqrt{\pi}D^{1.5}y(x) + y(x) = 0, \quad y(0) = 1, \quad y'(0) = 0. \tag{4.1}$$

The analytical solution of (4.1), as found in [17], has the following form:

$$y(x) = 1 - \sum_{j=0}^{\infty} \sum_{r=0}^{\infty} \frac{(-1)^r (-k\sqrt{\pi})^j (j+r)! x^{2+2r+j/2}}{j! r! (2+2r+j/2) \Gamma(2+2r+j/2)}. \tag{4.2}$$

As $k \rightarrow 0$, we may verify that the solution reduces to $y(x) = 1 - \sum_{r=0}^{\infty} ((-1)^r x^{2+2r} / (2+2r)) = \cos x$.

This example occurs in the mathematical model of (MEMS) instrument [17] and had been solved for various values of k , and the solutions are represented in Figures 2–4.

Figures 3 and 4 represent a comparison between our approximate solutions and the analytical solutions for $k = 1/5$ and $k = 0.005$ respectively. The results are tabulated also in Table 1.

The obtained results have good agreement with the exact solution as in Figures (3 and 4) and Table 1 and those published in [17].

Example 4.2. Consider the initial value problem:

$$y''(x) + D^{0.5}y(x) + y(x) = 8, \quad y(0) = y'(0) = 0. \tag{4.3}$$

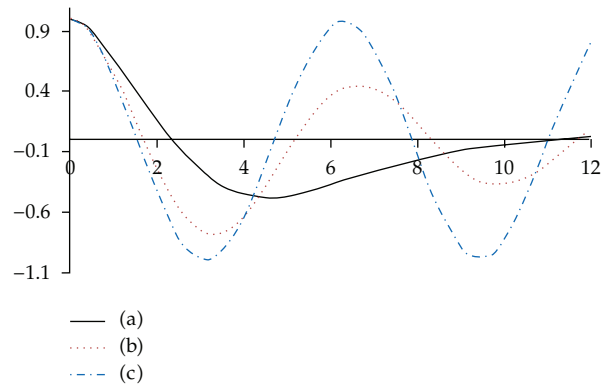


Figure 2: Numerical solutions of Example 4.1 for (a) $k = 1$, (b) $k = 0.2$, and (c) $k = 0.005$.

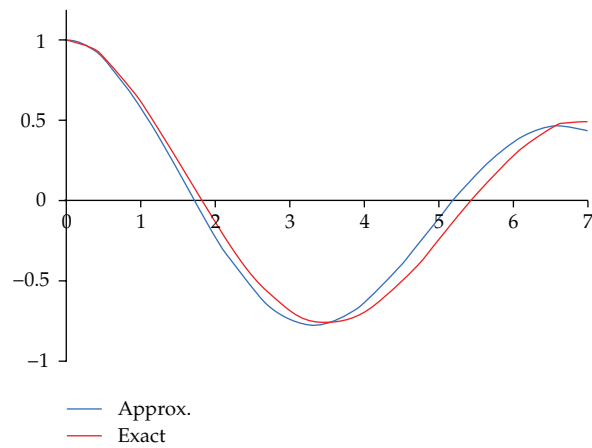


Figure 3: A comparison between the analytical solution and our approximated solution for $k = 1/5$.

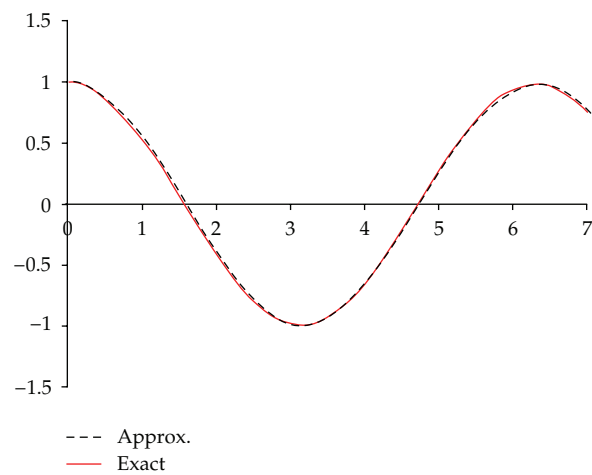


Figure 4: A comparison between the analytical solution and our approximated solution for $k = 0.005$.

Table 2: Numerical results of Example 4.2.

x	Decomp. Method [29]	Fractional diff. method [29]	Our method
0	0	0	0
0.1	0.039874	0.039473	0.039933
0.2	0.158512	0.157703	0.158981
0.3	0.353625	0.352402	0.353996
0.4	0.622083	0.622083	0.619900
0.5	0.960047	0.957963	0.950455
0.6	1.363093	1.360551	1.348551
0.7	1.826257	1.823267	1.796370
0.8	2.344224	2.340749	2.295551
0.9	2.911278	2.907324	2.899808
1	3.521462	3.517013	3.499200

This example had been solved for many methods. Table 2 shows a comparison between the solution of (4.3) by our method, decomposition method and fractional difference method.

Example 4.3. Consider the boundary value problem:

$$y''(x) + 0.5D^{0.5}y(x) + y(x) = 2 + x\left(\frac{1}{\Gamma(2.5)}x^{0.5} + x\right), \quad y(0) = 0, \quad y(1) = 1. \quad (4.4)$$

The exact of solution (4.4) is

$$y(x) = x^2. \quad (4.5)$$

The numerical solutions using shooting method with $z_1 = 1$ and $z_2 = 0.5$ led to next guess of initial condition $z_3 = -0.03914$, and the results are represented in Table 3.

Example 4.4. Consider the boundary value problem:

$$y''(x) + \theta D^{0.3}y(x) + \beta y(x) = -12x^2 + x^3 \left[20 + \theta \left(\frac{120}{\Gamma(5.7)}x^{1.7} - \frac{24}{\Gamma(4.7)}x^{0.7} \right) + \beta(x^2 - x) \right],$$

$$y(0) = y(1) = 0. \quad (4.6)$$

The exact of solution (4.6) is

$$y(x) = x^4(x - 1). \quad (4.7)$$

The numerical solutions use shooting method for $\theta = 0.5$, $\beta = 1$ and with initial guesses $z_1 = 1$ and $z_2 = 0.5$, $z_3 = -0.01224$; these lead to $z_4 = -5.07E - 4$ as the fourth guess for the initial condition and the results are represented in Table 4.

Table 3: Numerical results of Example 4.3.

x	Exact solution	Approx. with z_3	Error
0	0	0	0
0.125	0.015625	0.012842	$2.78E-3$
0.250	0.062500	0.053552	$8.95E-3$
0.375	0.140630	0.138569	$2.06E-3$
0.500	0.250000	0.246192	$3.81E-3$
0.625	0.390630	0.386836	$3.79E-3$
0.750	0.562500	0.553883	$8.62E-3$
0.875	0.765630	0.758442	$7.19E-3$
1	1	0.999971	$2.90E-5$

Table 4: Numerical results of Example 4.4.

x	Exact solution	Approx. solution	Error
0.125	-0.00021	-0.00039	$1.73E-4$
0.250	-0.00292	-0.00346	$5.35E-4$
0.375	-0.01235	-0.01316	$7.98E-4$
0.500	-0.03125	-0.03192	$6.74E-4$
0.625	-0.05722	-0.05713	$-9.50E-5$
0.750	-0.07910	-0.07732	$-1.78E-3$
0.875	-0.07327	-0.06985	$-3.42E-3$
1	0	$9.44E-4$	$-9.44E-4$

5. Conclusion

New scheme for solving class of fractional boundary value problem is presented using cubic spline method combined with shooting method. Transforming the fractional derivative into a system of ordinary differential equations is used for approximating the fractional term. Implicit Adams-Bashforth three-step method has been used for approximating this system of ordinary differential equations. Convergence analysis of the method is considered and is shown to be second order. Numerical comparisons between the solution using this new method and the methods introduced in [17, 29] are presented. The obtained numerical results show that the proposed method maintains a remarkable high accuracy which makes it encouraging for dealing with the solution of two-point boundary value problem of fractional order.

Acknowledgment

The authors are grateful to the referees for their suggestions and valuable comments.

References

- [1] O. P. Agrawal and P. Kumar, "Comparison of five schemes for fractional differential equations," in *Advances in Fractional Calculus: Theoretical Developments and Applications in Physics and Engineering*, J. Sabatier, O. P. Agrawal, and J. A. Tenreiro Machado, Eds., pp. 43–60, 2007.

- [2] J. H. Ahlberg, E. N. Nilson, and J. L. Walsh, *The Theory of Splines and Their Applications*, Academic Press, New York, NY, USA, 1967.
- [3] D. Baleanu and S. I. Muslih, "On Fractional Variational Principles," in *Advances in Fractional Calculus: Theoretical Developments and Applications in Physics and Engineering*, J. Sabatier, O. P. Agrawal, and J. A. Tenreiro Machado, Eds., pp. 115–126, 2007.
- [4] M. M. Benghorbal, *Power series solutions of fractional differential equations and symbolic derivatives and integrals [Ph.D. thesis]*, Faculty of Graduate Studies, The University of Western Ontario, Ontario, Canada, 2004.
- [5] B. Bonilla, M. Rivero, and J. J. Trujillo, "Linear differential equations of fractional order," in *Advances in Fractional Calculus: Theoretical Developments and Applications in Physics and Engineering*, J. Sabatier, O. P. Agrawal, and J. A. Tenreiro Machado, Eds., pp. 77–91, 2007.
- [6] C. X. Jiang, J. E. Carletta, and T. T. Hartley, "Implementation of fractional-order operators on field programmable gate arrays," in *Advances in Fractional Calculus: Theoretical Developments and Applications in Physics and Engineering*, J. Sabatier, O. P. Agrawal, and J. A. Tenreiro Machado, Eds., pp. 333–346, 2007.
- [7] N. Kosmatov, "Integral equations and initial value problems for nonlinear differential," *Nonlinear Analysis: Theory, Methods & Applications*, vol. 70, no. 7, pp. 2521–2529, 2009.
- [8] V. Lakshmikantham and A. S. Vatsala, "Basic theory of fractional differential equations," *Nonlinear Analysis: Theory, Methods & Applications*, vol. 69, no. 8, pp. 2677–2682, 2008.
- [9] K. S. Miller and B. Ross, *An Introduction to the Fractional Calculus and Differential Equations*, John Wiley & Sons, New York, NY, USA, 1993.
- [10] H. Nasuno, N. Shimizu, and M. Fukunaga, "Fractional derivative consideration on nonlinear viscoelastic statical and dynamical behavior under large pre-displacement," in *Advances in Fractional Calculus: Theoretical Developments and Applications in Physics and Engineering*, J. Sabatier, O. P. Agrawal, and J. A. Tenreiro Machado, Eds., pp. 363–376, 2007.
- [11] A. Ouahab, "Some results for fractional boundary value problem of differential inclusions," *Nonlinear Analysis: Theory, Methods & Applications*, vol. 69, no. 11, pp. 3877–3896, 2008.
- [12] I. Podlubny, *Fractional Differential Equations*, vol. 198, Academic Press, San Diego, Calif, USA, 1999.
- [13] I. Podlubny, I. Petráš, B. M. Vinagre, P. O'Leary, and L. Dorčák, "Analogue realizations of fractional-order controllers," *Nonlinear Dynamics*, vol. 29, no. 1–4, pp. 281–296, 2002.
- [14] X. Su and S. Zhang, "Solutions to boundary-value problems for nonlinear differential equations of fractional order," *Electronic Journal of Differential Equations*, vol. 2009, no. 26, pp. 1–15, 2009.
- [15] M. S. Tavazoei and M. Haeri, "A note on the stability of fractional order systems," *Mathematics and Computers in Simulation*, vol. 79, no. 5, pp. 1566–1576, 2009.
- [16] X. Su, "Boundary value problem for a coupled system of nonlinear fractional differential equations," *Applied Mathematics Letters*, vol. 22, no. 1, pp. 64–69, 2009.
- [17] A. D. Fitt, A. R. H. Goodwin, K. A. Ronaldson, and W. A. Wakeham, "A fractional differential equation for a MEMS viscometer used in the oil industry," *Journal of Computational and Applied Mathematics*, vol. 229, no. 2, pp. 373–381, 2009.
- [18] J. Duan, J. An, and M. Xu, "Solution of system of fractional differential equations by Adomian decomposition method," *Applied Mathematics, A Journal of Chinese Universities Series B*, vol. 22, no. 1, pp. 7–12, 2007.
- [19] R. Garrappa, "On some explicit Adams multistep methods for fractional differential equations," *Journal of Computational and Applied Mathematics*, vol. 229, no. 2, pp. 392–399, 2009.
- [20] A. Ghorbani, "Toward a new analytical method for solving nonlinear fractional differential equations," *Computer Methods in Applied Mechanics and Engineering*, vol. 197, no. 49-50, pp. 4173–4179, 2008.
- [21] E. R. Kaufmann and E. Mboumi, "Positive solutions of a boundary value problem for a nonlinear fractional differential equation," *Electronic Journal of Qualitative Theory of Differential Equations*, no. 3, pp. 1–11, 2008.
- [22] A. A. Kilbas, H. M. Srivastava, and J. J. Trujillo, *Theory and Applications of Fractional Differential Equations*, Minsk, Belarus, 1st edition, 2006.
- [23] S. Momani and Z. Odibat, "A novel method for nonlinear fractional partial differential equations: combination of DTM and generalized Taylor's formula," *Journal of Computational and Applied Mathematics*, vol. 220, no. 1-2, pp. 85–95, 2008.
- [24] W. Chen, H. Sun, X. Zhang, and D. Korošak, "Anomalous diffusion modeling by fractal and fractional derivatives," *Computers & Mathematics with Applications*, vol. 59, no. 5, pp. 1754–1758, 2010.
- [25] W. Chen, L. Ye, and H. Sun, "Fractional diffusion equations by the Kansa method," *Computers & Mathematics with Applications*, vol. 59, no. 5, pp. 1614–1620, 2010.

- [26] K. Diethelm and G. Walz, "Numerical solution of fractional order differential equations by extrapolation," *Numerical Algorithms*, vol. 16, no. 3-4, pp. 231–253, 1997.
- [27] G. J. Fix and J. P. Roop, "Least squares finite-element solution of a fractional order two-point boundary value problem," *Computers & Mathematics with Applications*, vol. 48, no. 7-8, pp. 1017–1033, 2004.
- [28] L. Galeone and R. Garrappa, "Fractional Adams-Moulton methods," *Mathematics and Computers in Simulation*, vol. 79, no. 4, pp. 1358–1367, 2008.
- [29] S. Momani and Z. Odibat, "Numerical comparison of methods for solving linear differential equations of fractional order," *Chaos, Solitons & Fractals*, vol. 31, no. 5, pp. 1248–1255, 2007.
- [30] J. P. Roop, *Variational solution of the fractional advection dispersion equation [Ph.D. thesis]*, Clemson University, Clemson, SC, USA, 2004.
- [31] F. I. Taukenova and M. Kh. Shkhanukov-Lafishev, "Difference methods for solving boundary value problems for fractional-order differential equations," *Computational Mathematics and Mathematical Physics*, vol. 46, no. 10, pp. 1871–1795, 2006.
- [32] W. K. Zahra and S. M. Elkholy, "Quadratic spline solution for boundary value problem of fractional order," *Numerical Algorithms*, vol. 59, pp. 373–391, 2012.
- [33] P. M. Prenter, *Splines and Variational Methods*, John Wiley & Sons, New York, NY, USA, 1975.
- [34] R. D. Russell and L. F. Shampine, "A collocation method for boundary value problems," *Numerische Mathematik*, vol. 19, pp. 1–28, 1972.



Hindawi

Submit your manuscripts at
<http://www.hindawi.com>

