

Digital models: How can dental arch form be verified chairside?

Alana Tavares¹, Emanuel Braga², Telma Martins de Araújo²

DOI: <https://doi.org/10.1590/2177-6709.22.6.068-073.oar>

Introduction: Plaster dental casts are routinely used during clinical practice to access maxillary dental arch form and assist on fabrication of individualized orthodontic archwires. Recently introduced, digital model technology may offer a limitation for the obtainment of a dental physical record. In this context, a tool for dental arch form assessment for chairside use is necessary when employing digital models. In this regard, paper print of the dental arch seems thus to be useful. **Methods:** In the present study, 37 lower arch models were used. Intercanine and intermolar widths and dental arch length measurements were performed and compared using plaster dental casts, digital models and paper print image of the models. Ortho Insight 3D scanner was employed for model digitalization. **Results:** No statistically significant differences were noted regarding the measurements performed on the plaster or digital models ($p > 0.05$). Paper print images, however, showed subestimated values for intercanine and intermolar widths and overestimated values for dental arch length. Despite being statistically significant ($p < 0.001$), the differences were considered clinically negligible. **Conclusion:** The present study suggests that paper print images obtained from digital models are clinically accurate and can be used as a tool for dental arch form assessment for fabrication of individualized orthodontic archwires.

Keywords: Orthodontics. Dental arch. 3D imaging. Computer generated.

Introdução: os modelos de gesso são usados rotineiramente, durante a prática clínica, para avaliação da forma da arcada inferior e para auxiliar na confecção de arcos ortodônticos individualizados. A tecnologia dos modelos digitais, introduzida recentemente, pode oferecer uma limitação na obtenção de um registro físico da arcada dentária. Assim, quando se utilizam modelos digitais, faz-se necessária uma ferramenta clínica para obtenção da forma da arcada. Com essa finalidade, poderia-se imprimir, em papel, uma imagem da arcada dentária obtida a partir do modelo de gesso. **Métodos:** nesse estudo, 37 modelos da arcada inferior foram utilizados, nos quais foram realizadas medições das distâncias intercaninos, intermolares e comprimento da arcada; sendo, então, comparadas entre modelos de gesso, modelos digitalizados com um scanner Ortho Insight 3D e imagens impressas em folha de papel A4. **Resultados:** não foram encontradas diferenças estatisticamente significativas nas medidas realizadas nos modelos de gesso e modelos digitais ($p > 0,05$). As imagens impressas, contudo, mostraram valores subestimados para as distâncias intercaninos e intermolares, e superestimados para o comprimento da arcada. Apesar de serem estatisticamente significativas ($p < 0,001$), as diferenças foram consideradas clinicamente insignificantes. **Conclusão:** o presente estudo sugere que as imagens obtidas por meio dos modelos digitais e impressas em papel são clinicamente acuradas e podem ser utilizadas como uma ferramenta auxiliar na confecção dos arcos ortodônticos individualizados.

Palavras-chave: Modelos dentários. Imagem tridimensional. Arcada dentária.

¹ Universidade Federal da Bahia, Mestrado em Odontologia e Saúde (Salvador/BA, Brasil).

² Universidade Federal da Bahia, Departamento de Ortodontia (Salvador/BA, Brasil).

» The authors report no commercial, proprietary or financial interest in the products or companies described in this article.

How to cite: Tavares A, Braga E, Araújo TM. Digital models: How can dental arch form be verified chairside? Dental Press J Orthod. 2017 Nov-Dec;22(6):68-73. DOI: <https://doi.org/10.1590/2177-6709.22.6.068-073.oar>

Submitted: May 05, 2017 - **Revised and accepted:** August 22, 2017

Contact address: Alana Tavares Ribeiro Meneses
Rua Priscila Dutra, 1229, casa 14, Vilas do Atlântico - Lauro de Freitas/BA
CEP: 42.700-000 - E-mail: alanatavares@hotmail.com

INTRODUCTION

Plaster models are traditionally used as an essential part of the orthodontic documentation process.^{1,2} Combined to photographs, radiographs and clinical examination, plaster models provide important information for dental and skeletal malocclusions diagnosis and treatment.³

Plaster models are very convenient but indeed present disadvantages, such as need for significant physical space for storage, possible breakages or damages, microorganisms colonization in the long-term, possibility of loss, and difficulty to exchange information with other professionals.

Reducing physical files volume in dental offices is widely needed. In this context, digital records of patients have been increasingly incorporated in orthodontic offices. Digital models have recently been introduced in clinical orthodontics, having potential to replace plaster models and eliminate storage space issues.⁴ On the other hand, digital models also have some limitations, such as inability to be manually handled, need for software technical support and possible information loss. However, it is believed that such problems are less important compared to what digital technology may offer.^{1,5}

In orthodontics, dental arch form maintenance is important, being directly related to function, aesthetics and stability.⁶⁻⁸ Therefore, arch shape, especially the maxillary arch, should not be altered throughout the treatment, in order to ensure outcome stability.

It is common in clinical practice to use plaster models to assist in the preparation of individualized orthodontic archwires. In this sense, replacing plaster models by digital models implies the loss of a physical record to guide the orthodontist. Thereby, the present study aimed to test the fidelity of printed images obtained from the digitized model.

MATERIAL AND METHODS

The study sample consisted of 37 lower dental arch plaster models depicting initial malocclusion of patients who undergone treatment in the Prof. José Édimo J. Soares Martins Orthodontics and Dentofacial Orthopedics Center, Federal University of Bahia (FOUFBA). The study was approved by FOUFBA ethics committee with the protocol number 35868414.5.0000.50.24. All participants signed an informed consent.

Patients were randomly selected and met the following inclusion criteria: complete permanent dentition up to first molars; no prosthetic restoration; and plaster models in perfect preparation and conservation state, without positive or negative bubbles or dental crown defects.

Evaluations were made in plaster models, digital models and printed images generated from digitized models. In order to evaluate plaster models, a Cen-Tech 4" (Harbor Freight Tools, Calabasas, CA, USA) digital caliper with 0.01mm accuracy and a specific plate made in CorelDRAW X5 containing two bold lines, one vertical and one horizontal, were used. Subsequently, a transparent adhesive was printed and fixed on a three millimeters thick glass plate, in order to keep the grid flat and facilitate assessments.

Evaluation was performed considering the following measures:

» Arch length – measured in millimeters on a vertical line between lower central incisors to a horizontal line connecting the distal surfaces of teeth #36 and #46. A graduated plate specially designed for the study was used. The vertical line perpendicular to the horizontal line was positioned in a point between central incisors. Arch length was evaluated on the plate with a digital caliper (Fig 1).

» Inter canine width – distance from tooth #33 cusp tip to tooth #43 cusp tip, measured in millimeters with a digital caliper (Fig 2).

» Intermolar width – distance from tooth #36 mesiobuccal cusp tip to tooth #46 mesiobuccal cusp tip, measured in millimeters with a digital caliper (Fig 3).

In order to evaluate digital models, lower arch virtual images were created from the plaster model through OrthoInsight 3D scanner, v. 5.0 (Motion View Software, LLC, Chattanooga, Tennessee, USA). Subsequently, arch length, and inter canine and intermolar widths measures were automatically generated by the program, following the same reference points used for the plaster model (Fig 4).

In order to evaluate the bi-dimensional (2D) image, the virtual models were printed in paper sheet directly from the software by selecting the capture 2D tool, clicking on printer and choosing the ABO 5 views option. Printing was conducted using a HP LaserJet 1020 printer (Hawlett - Packard Ltd., Campinas, SP, Brazil) set to letter size (279.4 x 215.9mm) with 100% original size and landscape orientation. On the printed image,

arch length, intercanine and intermolar widths were measured with a digital caliper using the same reference points used for plaster and digital models (Fig 5).

Prior to measurements, in order to determine researcher calibration, five plaster models were randomly selected. Plaster model, digital model and printed image measurements were performed at two different times, two weeks apart, under the same conditions by the same researcher, which was properly trained.

Measurements were subjected to statistical test to determine method error. For all variables, error was calculated according to Dahlberg's formula, in order to verify intra-rater agreement. Measurement reproducibility analysis was conducted by intraclass correlation test. Both tests were set to 95% confidence level. The Bland-Altman test was also performed for measurement reproducibility analysis and the results were considered not clinically important.

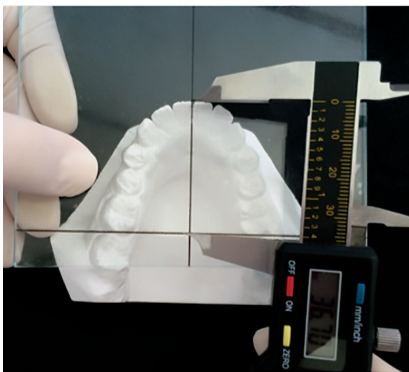


Figure 1 - Plaster model arch length evaluation using the graduated plate and digital caliper.



Figure 2 - Plaster model intercanine width evaluation.

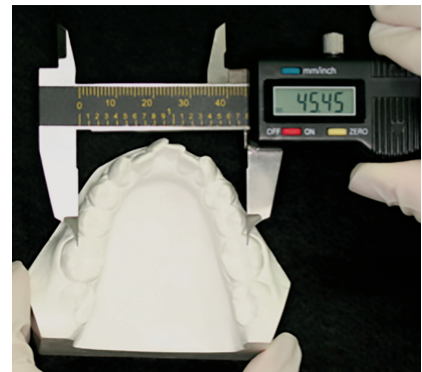


Figure 3 - Plaster model intermolar width evaluation.

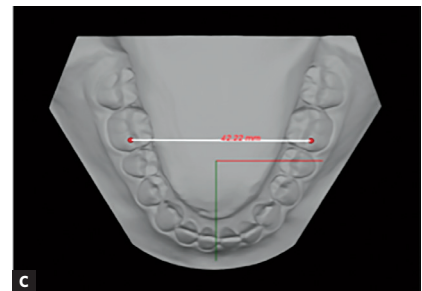
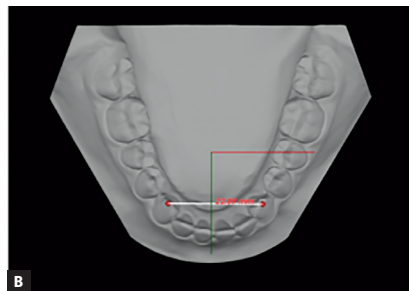
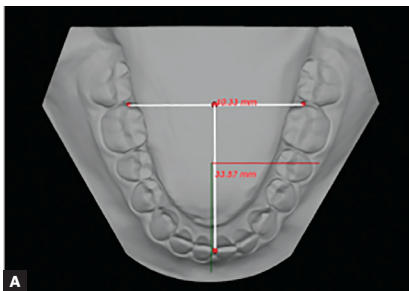


Figure 4 - Digital model evaluation, as follows: A) arch length, B) intercanine and C) intermolar widths.

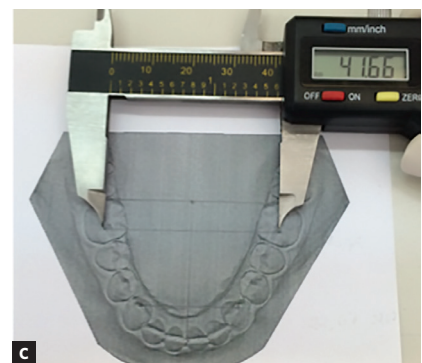
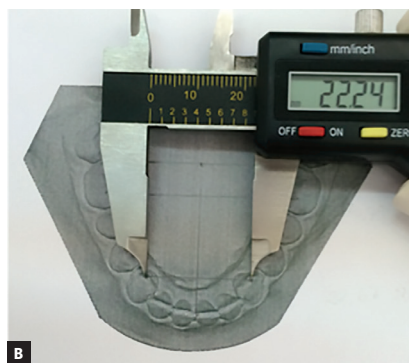
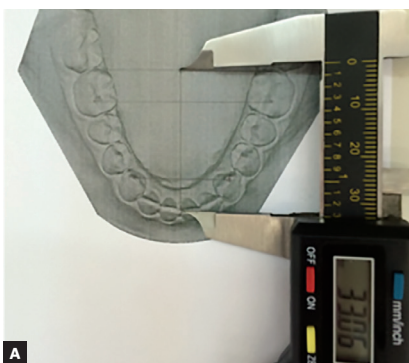


Figure 5 - Printed image evaluation, as follows: A) arch length, B) intercanine and C) intermolar widths.

Descriptive analysis was used to express the results as mean and standard deviation. To compare the dental arch measurements in the different methods, Variance Analysis for Repeated Measurements (ANOVA) was employed. Data distribution was evaluated with Shapiro-Wilk test. Significance level was set at 5% ($\alpha = 0,05$). Data was tabulated and verified using IBM SPSS Statistics for Windows (IBM SPSS. 21.0, 2012, Armonk, NY: IBM Corp.).

RESULTS

Table 1 shows the results for intercanine and intermolar widths and arch length, measured in the plaster models, digital models or paper prints. No statistically significant differences were noted regarding the measurements performed on the plaster or digital models ($p > 0.05$). Paper print images, however, showed subestimated values for intercanine and intermolar widths and overestimated values for dental arch length; these differences were considered statistically significant ($p < 0.001$) for the tested parameters.

DISCUSSION

Literature reports that arch length, perimeter and incisors position change over time due to physiological reasons, regardless of orthodontic treatment.⁹ It is a consensus for most authors that arch shape and length should be preserved during orthodontic therapy, in order to achieve greater post-treatment stability.^{6,7,10} Plaster models have been the tool used to help orthodontists to reproduce individual dental arch shape of each patient during archwire bending. However, plaster models presents some disadvantages, such as need for significant physical space for storage, possible breakages and

damage, possibility of loss and difficulty to exchange information with other professionals.^{1,11} In this context, three-dimensional (3D) scanned models have been proposed as a means to overcome plaster models limitations and facilitate orthodontics diagnose and planning.

As advantages, virtual models do not require physical space for storage, allow faster information exchange among professionals,¹² and provide working options such as the virtual setup preparation.¹³ On the other hand, virtual models also have some limitations, such as the inability to be manually handled.¹ Thus, it is necessary a mechanism to assist the orthodontist on accessing the arch shape when dealing with digital models.

The present study compared traditional plaster models, digitized models and paper prints obtained through the virtual models, aiming at providing a tool to help the orthodontist on accessing the dental arch shape in the daily clinical practice. No similar studies were found in the literature.

This study found no statistically significant difference ($p > 0.05$) comparing arch length, intercanine and intermolar width measurements between plaster and digital models. Different results were found by Santoro et al,² but it was highlighted by the authors that the differences were within a clinical acceptable range and, thus acceptable for orthodontic use. Keating et al¹¹ found no statistically significant differences between the two methods. Oliveira et al¹⁴ have also observed not statistically significant differences between methods, showing measurement reproducibility and reliability using digital models. Kim et al¹⁵ found excellent agreement between plaster and digitalized models, considering digitalized models reliable to replace traditional ones.

Table 1 - Comparison between the different methods for evaluating intercanine and intermolar widths and arch length.

	Measures			p-value
	Plaster Model Mean \pm SD	Digital Model Mean \pm SD	Print Mean \pm SD	
Intercanine width (mm)	26.14 \pm 2.67 ^a	26.11 \pm 2.71 ^a	25.73 \pm 2.68 ^b	< 0.001
Intermolar width (mm)	44.66 \pm 3.40 ^a	44.74 \pm 3.43 ^a	44.16 \pm 3.41 ^b	< 0.001
Arch length (mm)	33.94 \pm 2.62 ^a	33.99 \pm 2.64 ^a	34.42 \pm 2.68 ^b	< 0.001

^{a,b} Horizontal values (line) with distinct letters indicate statistical difference ($p < 0.05$, comparisons between pairs with Bonferroni adjustment). Values are expressed as mean \pm standard deviation.

Paper print images, however, showed subestimated values for intercanine and intermolar widths and overestimated values for dental arch length. The differences were found to be statistically significant ($p < 0.001$). However, the comparison between the digital model and the paper print obtained from it, showed that for intercanine and intermolar widths the mean differences were 0.38mm and 0.58mm, respectively. Regarding arch length, the mean difference observed was -0.52mm. Previous published research,² so as the authors of the present study, considered such differences as clinically negligible. It is thus suggested that the presented method is accurate for clinical use without bringing any potential distortions for the fabrication of orthodontic archwires or arch shape observation.

It is important to note that the image was obtained according to the mentioned methodology and, therefore, must be reproduced. Different scanners may show different results, thus, proper studies for different manufacturers are recommended.

Outcome stability, especially in relation to lower teeth irregularities, constitutes a key factor in orthodontic treatment. Several factors may contribute for increased stability and, among them, intercanine and intermolar widths maintenance are highlighted.¹⁶

According to accessed literature, arch shape change during orthodontic therapy potentiates relapse occur-

rence, making clear that, when possible, patient's initial arch form is the best guide for future stability.^{7,10}

The literature also shows evidence that intercanine and intermolar width decrease after treatment, especially if expansion was performed¹⁷. Glenn et al¹⁸ showed intercanine width and arch length decrease in the post-retention period. Park et al¹⁹ have also found intercanine and intermolar width decrease after retainer removal. Moreover, Myser et al²⁰ have also confirmed that there is intercanine width decrease after treatment, showing the importance of preserving the aforementioned distances and the arch shape.

Many researchers have sought methods for lower arch representation. A single and universal way may not represent the various features found in different individuals. Common arch shapes are simple to work with, yet challenging malocclusions may bring unusual arch forms.²¹ Therefore, in order to determine the arch shape of each patient, a reliable record is required, to preserve this shape during orthodontic therapy, thus contributing to treatment stability.

CONCLUSIONS

The present study suggests that paper print images obtained from digital models are clinically accurate and can be used as a tool for dental arch form assessment for fabrication of individualized orthodontic archwires.

REFERENCES

1. Joffe L. OrthoCAD: digital model for a digital era. *J Orthod.* 2004 Dec;31(4):344-7.
2. Santoro M, Galkin S, Teredesai M, Nicolay OF, Cangialosi TJ. Comparison of measurements made on digital and plaster models. *Am J Orthod Dentofacial Orthop.* 2003 July;124(1):101-5.
3. Han KU, Vig KWL, Weltraub JA, Vig PS, Kowalski CJ. Consistency of orthodontic treatment decisions relative to diagnostic records. *Am J Orthod Dentofacial Orthop.* 1991 Sept;100(3):212-9.
4. Quimby ML, Vig KWL, Rashid RG, Firestone AR. The accuracy and reliability of measurements made on computer-based digital models. *Angle Orthod.* 2004 June;74(3):298-303.
5. Mayers M, Firestone AR, Rashid R, Vig KW. Comparison of peer assessment rating (PAR) index scores of plaster and computer-based digital models. *Am J Orthod Dentofacial Orthop.* 2005 Oct;128(4):431-4.
6. Riedel AR. A review of the retention problem. *Angle Orthod.* 1960 Oct;30:179-99.
7. de la Cruz A, Sampson P, Little RM, Artun J, Shapiro PA. Long-term changes in arch form after orthodontic treatment and retention. *Am J Orthod Dentofacial Orthop.* 1995 May;107(5):518-30.
8. Ronay V, Miner M, Will LA, Arai K. Mandibular arch form: the relationship between dental and basal anatomy. *Am J Orthod Dentofacial Orthop.* 2008 Sept;134(3):430-8.
9. Pancherz H, Bjerklin K, Lindskog-Stokland B, Hansen K. Thirty-two-year follow-up study of Herbst therapy: a biometric dental cast analysis. *Am J Orthod Dentofacial Orthop.* 2014 Jan;145(1):15-27.
10. Felton JM, Sinclair PM, Jones DL, Alexander RG. A computerized analysis of the shape and stability of mandibular arch form. *Am J Orthod Dentofacial Orthop.* 1987 Dec;92(6):478-83.
11. Keating AP, Knox J, Bibb R, Zhurov AI. A comparison of plaster, digital and reconstructed study model accuracy. *J Orthod.* 2008 Sept;35(3):191-201; discussion 175.
12. Dalstra M, Melsen B. From alginate impressions to digital virtual models: accuracy and reproducibility. *J Orthod.* 2009 Mar;36(1):36-41; discussion 14.
13. Fleming PS, Marinho V, Johal A. Orthodontic measurements on digital study models compared with plaster models: a systematic review. *Orthod Craniofac Res.* 2011 Feb;14(1):1-16.
14. Oliveira DD, Ruellas ACO, Drummond MEL, Pantuzo MCG, Lanna AMQ. Confiabilidade do uso de modelos digitais tridimensionais como exame auxiliar ao diagnóstico ortodôntico: um estudo piloto. *Rev Dental Press Ortod Ortop Facial.* 2007;12(1):84-93.
15. Kim J, Heo G, Lavrère MO. Accuracy of laser-scanned models compared to plaster models and cone-beam computed tomography. *Angle Orthod.* 2014 May;84(3):443-50.
16. Ramalho DCV, Motta AFJ, Motta ATS, Mucha JN. A manutenção da forma do arco inferior – diagrama individualizado da forma de arco Mucha (DIFAM-UFF). *Orthod Sci Pract.* 2013;6(23):405-9.
17. Uhde MD, Sadowsky C, Begole EA. Long-term stability of dental relationships after orthodontic treatment. *Angle Orthod.* 1983 July;53(3):240-52.
18. Glenn G, Sinclair PM, Alexander RG. Nonextraction orthodontic therapy: Posttreatment dental and skeletal stability. *Am J Orthod Dentofacial Orthop.* 1987 Oct;92(4):321-8.
19. Park H, Boley JC, Alexander RA, Buschang PH. Age-related long-term posttreatment occlusal and arch changes. *Angle Orthod.* 2010 Mar;80(2):247-53.
20. Myser SA, Campbell PM, Boley J, Buschang PH. Long-term stability: postretention changes of the mandibular anterior teeth. *Am J Orthod Dentofacial Orthop.* 2013 Sept;144(3):420-9.
21. Raberin M, Laumon B, Martin JL, Brunner F. Dimensions and form of dental arches in subjects with normal occlusions. *Am J Orthod Dentofacial Orthop.* 1993 July;104(1):67-72.