

CASE REPORT**Open Access**

Plasmodium ovale infection in Malaysia: first imported case

Yvonne AL Lim^{1*}, Rohela Mahmud¹, Ching Hoong Chew², Thiruventhiran T³, Kek Heng Chua²

Abstract

Background: *Plasmodium ovale* infection is rarely reported in Malaysia. This is the first imported case of *P. ovale* infection in Malaysia which was initially misdiagnosed as *Plasmodium vivax*.

Methods: Peripheral blood sample was first examined by Giemsa-stained microscopy examination and further confirmed using a patented in-house multiplex PCR followed by sequencing.

Results and Discussion: Initial results from peripheral blood smear examination diagnosed *P. vivax* infection. However further analysis using a patented in-house multiplex PCR followed by sequencing confirmed the presence of *P. ovale*. Given that *Anopheles maculatus* and *Anopheles dirus*, vectors of *P. ovale* are found in Malaysia, this finding has significant implication on Malaysia's public health sector.

Conclusions: The current finding should serve as an alert to epidemiologists, clinicians and laboratory technicians in the possibility of finding *P. ovale* in Malaysia. *P. ovale* should be considered in the differential diagnosis of imported malaria cases in Malaysia due to the exponential increase in the number of visitors from *P. ovale* endemic regions and the long latent period of *P. ovale*. It is also timely that conventional diagnosis of malaria via microscopy should be coupled with more advanced molecular tools for effective diagnosis.

Background

Malaria is one of the most deadly parasitic diseases in the world, with an annual infection rate of 500 million cases and more than one million deaths. In Africa, malaria remains the single largest killer among children younger than 5 years of age with a mortality rate of 3,000 children per day. The latest malaria statistics recorded 243 million cases with 863, 000 deaths globally [1]. Currently, malaria can be caused by five *Plasmodium* species which include *Plasmodium falciparum*, *Plasmodium vivax*, *Plasmodium ovale*, *Plasmodium malariae* and more recently *Plasmodium knowlesi*. Infections caused by *P. falciparum* and *P. knowlesi* may be fatal while the other species generally cause milder disease. Distribution of *P. falciparum* and *P. vivax* are extensively distributed in the tropics and temperate regions of the world. *P. malariae* is also found in these regions but is less common while cases of *P. knowlesi* in on the rise in Southeast Asia [2-5] and *P. ovale* is mainly restricted to sub-Saharan Africa [6].

In Malaysia, malaria remains the most common vector-borne parasitic disease. Although cases have decline in general, malaria is still a public health problem in Sabah and Sarawak. However, more recently, urban malaria cases have surged. Malaria is still clinically significant due to high mortality rates caused by *P. falciparum* in cerebral malaria cases. The recent cases of *P. knowlesi* infections in humans was first brought into international attention in 2004, when Singh *et al* , a Malaysian researcher, highlighted in The Lancet the occurrence of naturally-acquired *P. knowlesi* infections from macaques in human beings when they examined 208 people with malaria in the Kapit division [7]. This created great excitement in the field of malaria research and with an avalanche of information, *P. knowlesi* was subsequently labelled 'the fifth *Plasmodium* species that infects humans'. In the same study, two cases of *P. ovale* were also detected by nested PCR assays. Since then, no other known cases of *P. ovale* infection has been reported. Here, a case of imported *P. ovale* infection confirmed by multiplex PCR targeting the small subunit ribosomal RNA (SSU rRNA) gene is reported. The gene was sequenced and compared with other reference *P. ovale* isolates.

* Correspondence: limailian@um.edu.my

¹Department of Parasitology, Faculty of Medicine, University of Malaya, 50603 Kuala Lumpur, Malaysia

Full list of author information is available at the end of the article

Case presentation

A 20-year-old Nigerian male student who has been in Malaysia for the last six months presented with a history of fever associated with chills and rigors for the last four days. Other physical examination findings were unremarkable. He was diagnosed as pyrexia of unknown origin (PUO). Laboratory findings on admission revealed anaemia (haemoglobin of 10.8 g/dL), platelet count of 117,000/ml and eosinophils of 2%. Blood examination of the thin smear stained with Giemsa showed enlarged infected red blood cells (RBCs) with putative parasites resembling *P. vivax*. He was treated with quinine 600 mg tds and doxycycline 100 mg bd. One week after admission, the patient was well.

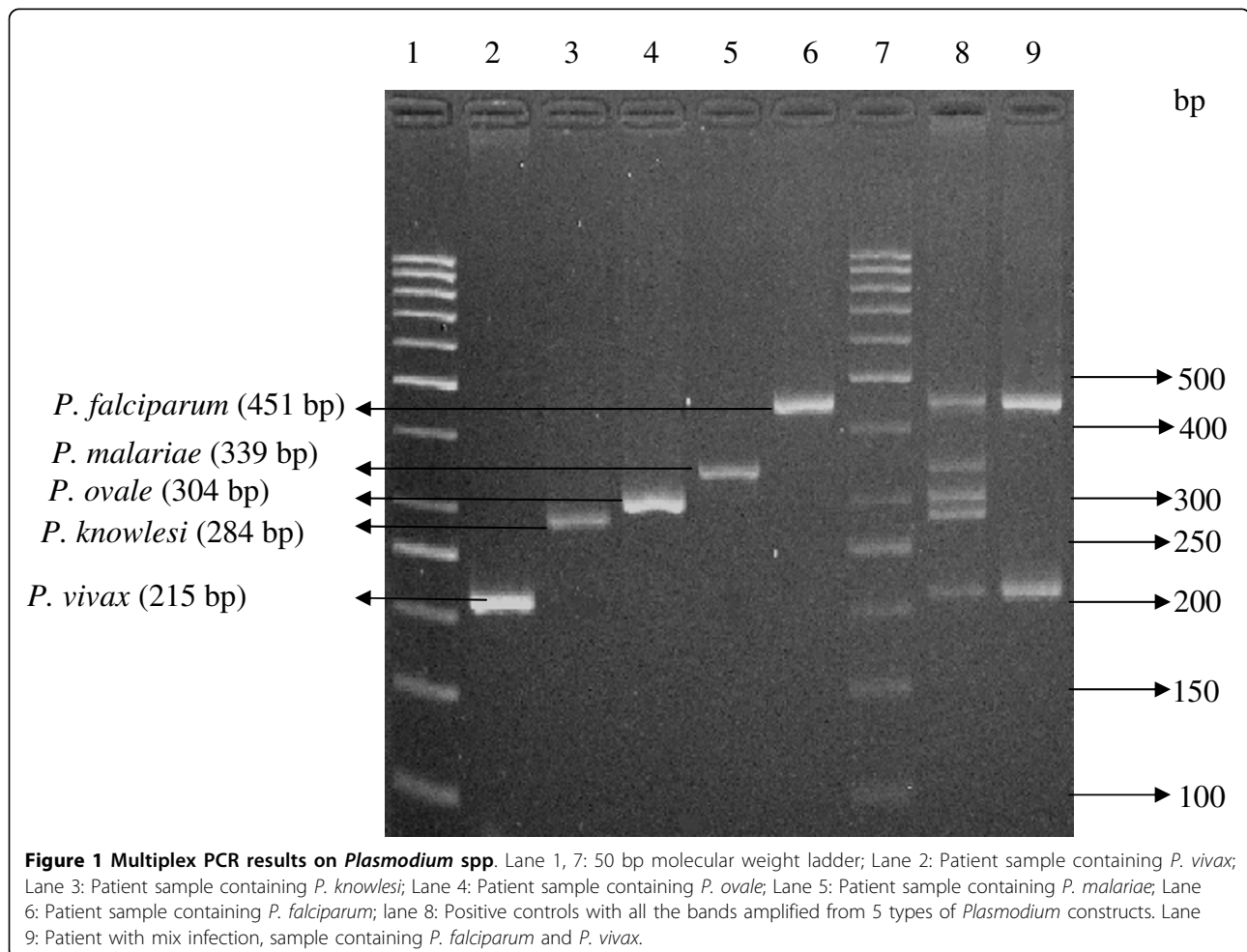
Confirmation of *Plasmodium ovale* using in-house multiplex polymerase chain reaction (PCR) and sequencing

Total genomic of this patient's blood DNA together with the *Plasmodium* DNA from the patient was extracted using QIAamp DNA Mini Kit (Qiagen, USA) according

to the manufacturer's instructions. The extracted DNA was subjected to a patented in-house PCR targeting the SSU rRNA gene. Following that, the PCR products were electrophoresed on 3% (w/v) ethidium bromide stained agarose gel. Results showed that the patient was infected with *P. ovale* instead of *P. vivax*, as previously diagnosed by conventional microscopy (Figure 1, lane 4). Further confirmation with PCR amplification was also carried out using genus specific primers (rPLU5/rPLU6) followed by sequencing.

Analysis of sequences and phylogenetic analyses of sequence data

Sequencing data obtained was analysed using BLAST program [8]. The BLAST result showed that the sequence information obtained has 99% similarity to SSU rRNA gene of *P. ovale* in the GenBank. For phylogenetic analyses, the sequence determined were compared with those available in GenBank and published in quality, peer-reviewed scientific journals. Sequences were trimmed and then aligned using the program Clustal x



[9], and the alignments were adjusted by employing the program BioEdit [10].

The phylogenetic analysis of the sequence data was conducted using Bayesian inference (BI) and by employing the software package MrBayes v3.1.2. Posterior probabilities (pp) were calculated via 2,000,000 generations (ngen = 2,000,000; burnin = 20,000) using the Monte Carlo Markov chain method, which utilizes four simultaneous tree-building chains (nchains = 4) with every 100th tree saved (samplefreq = 100). The evolutionary distance was calculated using the general time reversible evolutionary model (nset = 6), which allows for a gamma-shaped variation in mutation rates between codons (rates = gamma).

Plasmodium falciparum [GenBank accession number M19172] [11], *P. vivax* [GenBank accession number X13926] [12], *P. malariae* [GenBank accession number AF487999] [13], *P. knowlesi* [GenBank accession number L07560] [14], were used as the out groups in the analysis of SSU rRNA sequence data for *P. ovale*. Upon the completion of the Bayesian analysis, a 50% majority-rule consensus tree for each species was constructed in Treeview × v.0.5. Analysis of SSU rRNA sequence data inferred the patient was indeed infected with *P. ovale* and not *P. vivax* as initially diagnosed by microscopy (Figure 2).

Discussion

This is the first case of imported malarial infection caused by *P. ovale* in Malaysia. *P. ovale* is a cause of

benign and relapsing tertian malaria and the least common among the human-infecting *Plasmodium* species. Besides *P. vivax*, *P. ovale* also has a dormant liver stage (with hypnozoites) following primary infection. Mature schizonts develop from the hypnozoites which later release merozoites into the blood stream causing clinical symptoms of malaria (relapsing malaria) even after many months of primary infection. However, the therapy of *P. ovale* infection is similar to that of malaria caused by *P. vivax*.

Globally, *P. ovale* infection causes 0.5-10.5% of all malaria cases. Although the distribution of *P. ovale* is concentrated in sub-Saharan Africa [6], *P. ovale* infections have also been intermittently reported in other parts of the world such as India [15-18], Papua New Guinea [19], Korea [20], Thailand [21], Spain [22] and Sri Lanka [23]. In Southeast Asia, prevalence of *P. ovale* infections ranged from 2.0% to 9.4%, with records from southern Vietnam, Thai-Myanmar border, Lao PDR and Indonesia [24-26].

Although clinically, the treatment for *P. ovale* is the same as *P. vivax*, the specific identification of *P. ovale* is of significant public health importance. Based on enzyme-linked immunosorbent assay-based detection of infected mosquitoes, *Anopheles gambiae* and *Anopheles funestus* are the likely natural vectors of *P. ovale* in Africa [27]. *Anopheles atroparvus* has also been experimentally shown to be an effective mosquito host and capable of transmitting the infection to humans [28-32]. Other proven experimental hosts are *Anopheles albimanus* [33-35],

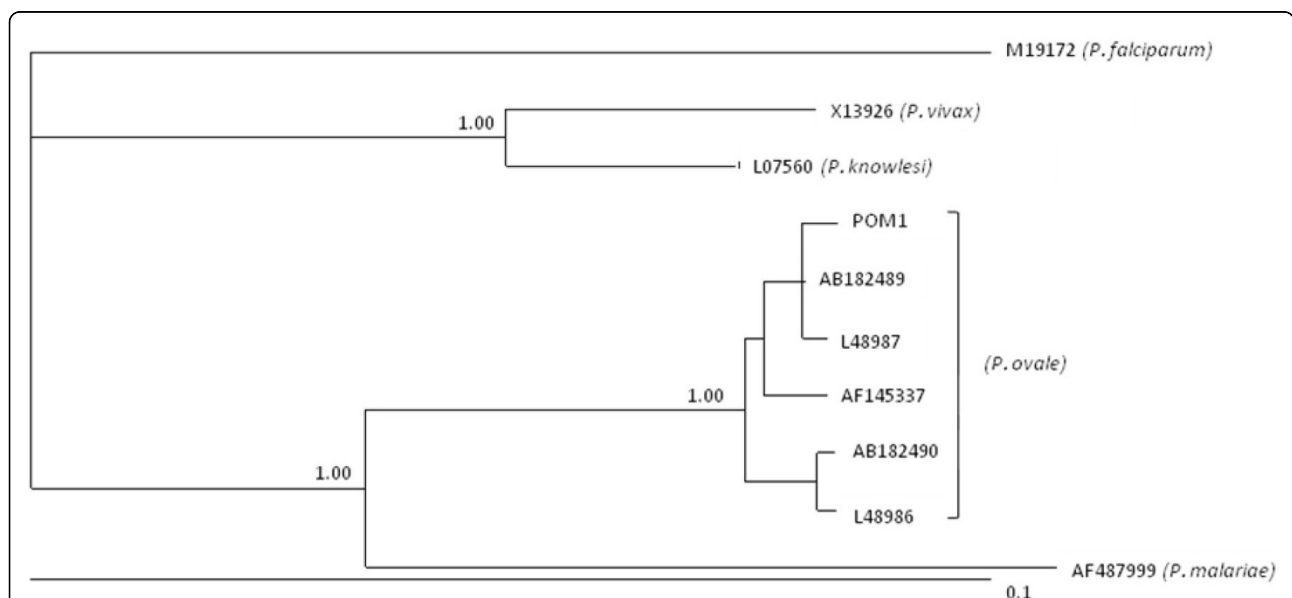


Figure 2 Phylogenetic analyses of SSU rRNA sequence data representing *Plasmodium ovale* from a patient (POM1) using Bayesian inference (BI). Sequences from the present study as well as reference sequences representing *P. ovale*, *P. falciparum*, *P. vivax* and *P. malariae* (acquired from GenBank) are indicated. Posterior probabilities are indicated at all major nodes.

Anopheles quadrimaculatus [33,34], *Anopheles freeborni* [36], *Anopheles maculatus* [36], *Anopheles subpictus* [32], *Anopheles stephensi* and *Anopheles balabacensis balabacensis* (= *Anopheles dirus*) [37]. In studies with the Donaldson strain of *P. ovale*, *A. quadrimaculatus* was the most susceptible to infection, followed by *A. albimanus* from the Florida Keys and *A. albimanus* from Panama [33]. In comparative studies with the West African strain, *A. stephensi* was the most susceptible, followed by *A. freeborni*, *A. dirus*, *A. quadrimaculatus*, *A. maculatus*, and *A. albimanus* [37]. *Anopheles farauti* has also been experimentally infected with *P. ovale* [38]. From these proven experimental hosts of *P. ovale*, two are found in Malaysia. The presence of *A. maculatus* and *A. dirus* in Malaysia increase the public health risk of naturally acquiring the infection. Infected *P. ovale* human host may be bitten by these vectors and the disease can be spread via the bite of the infected mosquito.

While most *P. ovale* infections in Asia were imported cases, there were at least two reports which indicated indigenous cases such as the one in India [18] and the other in Sri Lanka [23]. Since in both cases, patients involved had no travel history or receipt of blood transfusion or any blood products, *P. ovale* infection was postulated as locally acquired through infected mosquito bites [18,23]. These incidences highlighted two possibilities. Firstly, *P. ovale* parasites could have been prevalent in these countries but have never been detected due to high similarities between the morphology of *P. ovale* and *P. vivax* leading to misdiagnosis via conventional microscopy. Secondly, *P. ovale* could have first been introduced into these countries from human host who had been to Africa, where *P. ovale* is endemic. With the presence of suitable mosquito vectors in India and Sri Lanka, *P. ovale* could have been transmitted to other susceptible hosts. However, both articles did not mention about the vectors that were available in each respective country.

Misdiagnosis of *P. vivax/P. ovale* infection is possible because using routine microscopy it is difficult to morphologically distinguish *P. vivax* and *P. ovale* parasites. Both have the characteristic enlarged erythrocytes which are sometimes not obvious on thick/thin blood smears that are routinely used to detect malaria infections. There is also no difference in clinical presentation between infections with *P. vivax* and *P. ovale*, with both parasites resulting in pathognomonic chills and rigors every 48 hours.

Therefore, more advanced and reliable diagnostic techniques, such as PCR, should be utilized to provide specific identification of species, as was the case in Sri Lanka [23]. Conventionally, to identify *Plasmodium* species, microscopic examination of Giemsa-stained blood smears has been the diagnostic method of choice [39].

However, it is not easy to identify *P. ovale* on a blood smear, particularly when parasite numbers are low and mixed species infections are present [40]. The frequency of single *P. ovale* infection is very low even in *P. ovale*-endemic areas, while the frequency of mixed species infection involving *P. ovale* was very high. In these areas, *P. ovale* was more frequently observed using PCR methods (3.8-16.5%) than with conventional blood smear methods (0-0.4%) [24,26,41,42]. A combined application of nucleic acid detection methods with the conventional blood smear methods should be the future recommended method especially for the identification of *Plasmodium* species in mixed species infections and in imported malaria cases.

This is important since there have been several recent reports of *P. ovale* infections in areas of low transmission of malaria in southern and southeast Asia [17,24-26,43]. It is believed that these parasites were introduced into these countries due to increased travel of tourists to or from Africa. With Malaysia's open policies in encouraging foreign workers in construction, agricultural and service sectors, besides providing lots of higher education opportunities at relatively lower cost compared to USA and UK, many foreigners including those from Africa are flocking into the country. Hence, it is paramount that clinicians and diagnostic laboratory technicians are fully aware of the possibilities of novel pathogens being introduced into the country.

This present finding essentially also highlighted the need to consider even historically distant exposure to *P. ovale*, given the potentially long latency period to relapse [44-46]. It is vital to note that an initially negative single malaria smear does not rule out *P. ovale* infection, particularly given its typical low parasitemia [6,46].

Conclusions

This current finding should serve as an alert to epidemiologists, clinicians, laboratory technicians and other key stakeholders in the possibility of finding *P. ovale* in Malaysia. *P. ovale* should be considered as an etiology for imported malaria in Malaysia. There is a potential risk to public health since the mosquito vectors for *P. ovale* are found in Malaysia. In addition, it is also recommended that there is an urgent need to couple microscopic technique with advanced molecular methods (i.e., multiplex PCR) for accurate and specific diagnosis.

Consent

The study protocol (Reference Number: 709.2) was approved by the Ethics Committee of the University Malaya Medical Centre (UMMC), Malaysia before the commencement of the study. Written informed consent

was obtained from the patient for publication of this case report.

Acknowledgements

This research work was funded by the University of Malaya grants (PPP: PS155-2008C and PPP: PS251-2010A).

Author details

¹Department of Parasitology, Faculty of Medicine, University of Malaya, 50603 Kuala Lumpur, Malaysia. ²Department of Molecular Medicine, Faculty of Medicine, University of Malaya, 50603 Kuala Lumpur, Malaysia. ³Sunway Medical Centre Berhad, No. 5, Jalan Lagoon Selatan, Bandar Sunway, 46150 Petaling Jaya, Selangor, Malaysia.

Authors' contributions

RM and TT carried out the clinical and laboratory diagnosis. CHC carried out the molecular genetic studies. YALL participated in the sequence alignment and drafted the manuscript. KHC and YALL conceived of the study, and participated in its design and coordination and drafted the manuscript. All authors read and approved the final manuscript.

Competing interests

The authors declare that they have no competing interests.

Received: 17 June 2010 Accepted: 8 October 2010

Published: 8 October 2010

References

1. WHO: **World Malaria Report 2009**. World Health Organization, Geneva 2009.
2. Cox-Singh J, Davis TM, Lee KS, Shamsul SS, Matusop A, Ratnam S, Rahman HA, Conway DJ, Singh B: ***Plasmodium knowlesi* malaria in humans is widely distributed and potentially life threatening**. *Clin Infect Dis* 2008, **15**:165-171.
3. Vythilingam I, Noorazian YM, Huat TC, Jiram AI, Yusri YM, Azahari AH, Norparina I, Noorain A, Lokmanhakim S: ***Plasmodium knowlesi* in humans, macaques and mosquitoes in Peninsular Malaysia**. *Parasit Vectors* 2008, **1**:26.
4. Van den Eede P, Van HN, Van Overmeir C, Vythilingam I, Duc TN, Hungle X, Manh HN, Anné J, D'Alessandro U, Erhart A: **Human *Plasmodium knowlesi* infections in young children in central Vietnam**. *Malar J* 2009, **30**:249.
5. Figtree M, Lee R, Bain L, Kennedy T, Mackertich S, Urban M, Cheng Q, Hudson BJ: ***Plasmodium knowlesi* in human, Indonesian Borneo**. *Emerg Infect Dis* 2010, **16**:672-674.
6. Collins WE, Jeffery GM: ***Plasmodium ovale*: parasite and disease**. *Clin Microbiol Rev* 2005, **18**:570-581.
7. Singh B, Lee KS, Matusop A, Radhakrishnan A, Shamsul SSG, Cox-Singh J, Thomas A, Conway DJ: **A large focus of naturally acquired *Plasmodium knowlesi* infections in human beings**. *Lancet* 2004, **363**:1017-1024.
8. Altschul SF, Madden TL, Schaffer AA, Zhang J, Zhang Z, Miller W, Lipman DJ: **Gapped BLAST and PSI-BLAST: a new generation of protein database search programs**. *Nucleic Acids Res* 1997, **25**:3389-3402.
9. Thompson JD, Gibson J, Plewniak F, Jeanmougin F, Higgins DG: **The Clustal x windows interface: flexible strategies for multiple sequence alignment aided by quality analysis tools**. *Nucleic Acids Res* 1997, **24**:4876-4882.
10. Hall BG: **Phylogenetic trees made easy: a how-to manual**. Sunderland, MA, U.S.A., Sinauer Associates, Inc 2004.
11. McCutchan TF, de la Cruz VF, Lal AA, Gunderson JH, Elwood HJ, Sogin ML: **Primary sequences of two small subunit ribosomal RNA genes from *Plasmodium falciparum***. *Mol Biochem Parasitol* 1988, **28**:63-68.
12. Waters AP, McCutchan TF: **Partial sequence of the asexually expressed SU rRNA gene of *Plasmodium vivax***. *Nucleic Acids Res* 1989, **17**:2135.
13. Kawamoto F, Win TT, Mizuno S, Lin K, Kyaw O, Tantular IS, Mason DP, Kimura M, Wongsrichanalai C: **Unusual *Plasmodium malariae*-like parasites in southeast Asia**. *J Parasitol* 2002, **88**:350-357.
14. Waters AP, Higgins DG, McCutchan TF: **Evolutionary relatedness of some primate models of *Plasmodium***. *Mol Biol Evol* 1993, **10**:914-923.
15. Mukherjee AK, Chatterjee PK, Paul SC: **A case of *Plasmodium ovale* infection**. *Bull Calcutta Sch Trop Med* 1966, **14**:88-89.
16. Jambulingam P, Mohapatra SS, Das LK, Das PK, Rajagopalan PK: **Detection of *Plasmodium ovale* in Koraput district, Orissa state**. *Indian J Med Res* 1989, **89**:115-116.
17. Mishra B, Mirdha BR, Samantray JC: ***Plasmodium ovale* malaria in Delhi**. *Indian J Pediatr* 1999, **66**:143-144.
18. Marathe A, Date V, Shah HN, Tripathi JR: ***Plasmodium ovale* - a case report from Gujarat**. *J Vect Borne Dis* 2006, **43**:206-208.
19. Hombhanje FW: ***Plasmodium ovale* species in Papua New Guinea - lest we forget**. *PNG Med J* 1998, **41**:116-118.
20. Han TH, Kim BN, Seong HK: **A case of imported *Plasmodium ovale* malaria**. *J Korean Med Sci* 2006, **21**:932-935.
21. Coldren RL, Jongsakul K, Vayakornvichit S, Noedl H, Fukudas MM: **Apparent relapse of imported *Plasmodium ovale* malaria in a pregnant woman**. *Am J Trop Med Hyg* 2007, **77**:992-994.
22. Rojo-Marcos G, Cuadros-González J, Mesa-Latorre JM, Culebras-López AM, de Pablo-Sánchez R: **Acute respiratory distress syndrome in a case of *Plasmodium ovale* malaria**. *Am J Trop Med Hyg* 2008, **79**:391-393.
23. Wickremasinghe R, Galapaththy GN, Fernando WA, de Monbrison F, Wijesinghe RS, Mendis KN, Picot S, Ringwald P, Wickremasinghe AR: **An indigenous case of *Plasmodium ovale* infection in Sri Lanka**. *Am J Trop Med Hyg* 2008, **78**:206-207.
24. Kawamoto F, Liu Q, Ferreira MU, Tantular IS: **How prevalent are *Plasmodium ovale* and *P. malariae* in east Asia?** *Parasitol Today* 1999, **15**:422-426.
25. Toma H, Kobayashi J, Vannachone B, Arakawa T, Sato Y, Nambanya S, Manivong K, Inthakone S: ***Plasmodium ovale* infections detected by PCR assay in Lao PDR**. *Southeast Asian J Trop Med Public Health* 1999, **30**:620-622.
26. Win TT, Lin K, Mizuno S, Zhou M, Liu Q, Ferreira MU, Tantular IS, Kojima S, Ishii A, Kawamoto F: **Wide distribution of *Plasmodium ovale* in Myanmar**. *Trop Med Int Health* 2002, **7**:231-239.
27. Beier MS, Schwartz IK, Beier JC, Perkins PV, Onyango F, Koros JK, Campbell GH, Andrysiak PM, Brandling-Bennett AD: **Identification of malaria species by ELISA in sporozoite and oocyst infected *Anopheles* from western Kenya**. *Am J Trop Med Hyg* 1988, **39**:323-327.
28. James SP, Nicol WD, Shute PG: ***P. ovale* passage through mosquitoes and successful transmission by their bites**. *Ann Trop Med Parasitol* 1932, **26**:139-145.
29. James SP, Nicol WD, Shute PG: ***Plasmodium ovale* Stephens 1922**. *Parasitol* 1933, **25**:87-95.
30. Sinton JA, Hutton EL, Shute PG: **Studies of infections with *Plasmodium ovale*. I. Natural resistance to ovale infections**. *Trans R Soc Trop Med Hyg* 1939, **32**:751-762.
31. Shute PG, Maryon M: **A study of human malaria oocysts as an aid to species diagnosis**. *Trans R Soc Trop Med Hyg* 1952, **46**:275-292.
32. Garnham PCC: **Malaria parasites and other haemosporidia**. Blackwell Scientific Publications, Oxford, England 1966.
33. Jeffery GM: **The Donaldson strain of malaria 3. The infection in the mosquito**. *Am J Trop Med Hyg* 1954, **3**:651-659.
34. Jeffery GM, Young MD, Wilcox A: **The Donaldson strain of malaria 1. History and characterization of the infection in man**. *Am J Trop Med Hyg* 1954, **3**:628-637.
35. Jeffery GM, Wilcox A, Young MD: **A comparison of West African and West Pacific strains of *Plasmodium ovale***. *Trans R Soc Trop Med Hyg* 1955, **49**:168-175.
36. Chin W, Contacos PG, Buxbaum JN: **The transmission of a West African strain of *Plasmodium ovale* by *Anopheles freeborni* and *Anopheles maculatus***. *Am J Trop Med Hyg* 1966, **15**:690-693.
37. Coatney GR, Collins WE, Warren M, Contacos PG: **The primate malarias**. U. S. Government Printing Office, Washington, D.C 1971.
38. Collins WE, Sullivan JS, Nace D, Williams T, Kendall J, Sullivan JJ, Galland GG, Grady KK, Boungaseng A: **Experimental infection of *Anopheles farauti* with different species of *Plasmodium***. *J Parasitol* 2002, **88**:295-298.
39. Warhurst DC, Williams JE: **Laboratory diagnosis of malaria**. *J Clin Pathol* 1996, **49**:533-538.
40. Richie TL: **Interactions between malaria parasites infecting the same vertebrate host**. *Parasitol* 1988, **96**:607-639.
41. Snounou G, Viriyakosol S, Zhu XP, Jara W, Pinheiro L, do Rosario VE, Thaithong S, Brown KN: **High sensitivity of detection of human malaria parasites by the use of nested polymerase chain reaction**. *Mol Biochem Parasitol* 1993, **61**:315-320.

42. May J, Mockenhaupt FP, Ademowo OG, Falusi AG, Olumese PE, Bienzle U, Meyer CG: **High rate of mixed and subpatent malarial infections in southwest Nigeria.** *Am J Trop Med Hyg* 1999, **61**:339-343.
43. Incardona S, Chy S, Chiv L, Nhem S, Sem R, Hewitt S, Doung S, Mercereau-Puijalon O, Fandeur T: **Large sequence heterogeneity of the small subunit ribosomal RNA gene of *Plasmodium ovale* in Cambodia.** *Am J Trop Med Hyg* 2005, **72**:719-724.
44. Davis TM, Singh B, Sheridan G: **Parasitic procrastination: late-presenting *ovale* malaria and schistosomiasis.** *Med J Aust* 2001, **175**:146-148.
45. Collins WE, Jeffery GM: **A retrospective examination of sporozoite-induced and trophozoite-induced infections with *Plasmodium ovale*: development of parasitologic and clinical immunity during primary infection.** *Am J Trop Med Hyg* 2002, **66**:492-502.
46. Bottieau E, Clerinx J, Van Den Enden E, Van Esbroeck M, Colebunders R, Van Gompel A, Van Den Ende J: **Imported non-*Plasmodium falciparum* malaria: a five-year prospective study in a European referral center.** *Am J Trop Med Hyg* 2006, **75**:133-138.

doi:10.1186/1475-2875-9-272

Cite this article as: Lim et al.: *Plasmodium ovale* infection in Malaysia: first imported case. *Malaria Journal* 2010 **9**:272.

**Submit your next manuscript to BioMed Central
and take full advantage of:**

- Convenient online submission
- Thorough peer review
- No space constraints or color figure charges
- Immediate publication on acceptance
- Inclusion in PubMed, CAS, Scopus and Google Scholar
- Research which is freely available for redistribution

Submit your manuscript at
www.biomedcentral.com/submit

