



Occurrence patterns of coral-dwelling gall crabs (Cryptochiridae) over depth intervals in the Caribbean

Kaj M. van Tienderen¹ and Sancia E.T. van der Meij^{1,2}

¹Naturalis Biodiversity Center, Leiden, The Netherlands

²Oxford University Museum of Natural History, University of Oxford, Oxford, United Kingdom

ABSTRACT

Coral-associated invertebrates form a major part of the diversity on reefs, but their distribution and occurrence patterns are virtually unstudied. For associated taxa data are lacking on their distribution across shelves and environmental gradients, but also over various depths. Off Curaçao we studied the prevalence and density of coral-dwelling gall crabs (Cryptochiridae), obligate symbionts of stony corals. Belt transects ($10 \times 0.5 \text{ m}^2$) were laid out at 6, 12 and 18 m depth intervals at 27 localities. Twenty-one known host coral species were surveyed, measured, and the number of crab dwellings was recorded to study the influence of host occurrence, depth distribution, and colony size on the occurrence rates of three Atlantic gall crab species: *Opecarcinus hypostegus*, *Troglocarcinus corallicola* and *Kroppcarcinus siderastreicola*. The overall gall crab prevalence rate was 20.3% across all available host corals at all depths. The agariciid-associated species *O. hypostegus* was found to mostly inhabit *Agaricia lamarcki* and its prevalence was highest at deeper depths, following the depth distribution of its host. *Kroppcarcinus siderastreicola*, associated with *Siderastrea* and *Stephanocoenia*, inhabited shallower depths despite higher host availability at deeper depths. The generalist species *T. corallicola* showed no clear host or depth specialisation. These results show that the primary factors affecting the distribution and occurrence rates over depth intervals differed between each of the three Atlantic cryptochirid species, which in turn influences their vulnerability to reef degradation.

Submitted 29 December 2015

Accepted 21 February 2016

Published 10 March 2016

Corresponding author

Sancia E.T. van der Meij,

Sancia.vanderMeij@oum.ox.ac.uk

Academic editor

James Reimer

Additional Information and
Declarations can be found on
page 20

DOI 10.7717/peerj.1794

© Copyright

2016 van Tienderen and van der Meij

Distributed under

Creative Commons CC-BY 4.0

OPEN ACCESS

Subjects Biodiversity, Ecology, Marine Biology, Zoology

Keywords Belt transects, Associated fauna, Invertebrates, Coral cover, Scleractinia, Curaçao

INTRODUCTION

Coral reefs are amongst the most productive ecosystems on earth and encompass the highest biodiversity of any marine ecosystem. The wealth of potential habitats on reefs has given rise to an enormous diversity of species (*Connell, 1978; Sebens, 1994; Gray, 1997; Plaisance et al., 2011*). The majority of coral reef biodiversity is composed of highly diverse invertebrate taxa that are understudied and incompletely described (*Reaka-Kudla, 1997*). A large number of these invertebrates live in close association with scleractinian corals, relying on their hosts for food, refuge and habitat (*Stella et al., 2011; Hoeksema, van der Meij & Franssen, 2012*). The relationship between coral-associated invertebrates and corals can be either obligate or facultative (*Castro, 1976; Castro, 2015*). Because obligate species



Figure 1 Gall crab dwellings as observed off Curaçao. (A) *Montastraea cavernosa*, (B) *Agaricia agaricites* and (C) *Stephanocoenia intersepta*.

depend on their host coral for survival, their occurrence and distribution is inseparable with that of their host. If particular coral species disappear facultative associates may persist by switching hosts, whereas the more specialized, obligate associates are likely at greater risk of extinction. In turn, many corals are also reliant on the services of particular invertebrate taxa for their subsistence (Stella *et al.*, 2011, and references therein). This high degree of dependency may have severe consequences in light of the continuing global decrease in coral cover, and is likely to cause declines among invertebrates and other coral-associated taxonomic groups. A better understanding of the occurrence patterns of invertebrates and their degree of dependence on their hosts, has thus become an important conservational issue in this era. The presence of coral-associated organisms evidently depends on host availability, which may be related to various environmental factors (e.g., distance offshore, exposure to winds, and depth), but it is yet unclear if and how these factors interact with occurrence rates (Gittenberger & Hoeksema, 2013, van der Meij & Hoeksema, 2013). Unfortunately, very little literature is available on the distribution patterns of coral-associated species, across the shelf or over depths (Preston & Doherty, 1990; Preston & Doherty, 1994; Oigman-Pszczol & Creed, 2006; Gittenberger & Hoeksema, 2013; van der Meij & Hoeksema, 2013).

Reef habitats support abundant and diverse assemblages of small crustaceans; a large portion of the more than 500 (out of nearly 2,000) brachyuran crab species on Indo-Pacific coral reefs live in close association with scleractinian corals (Serène, 1972). Among them are coral-dwelling gall crabs (Cryptochiridae), obligate symbionts of stony corals (Scleractinia). These crabs settle on their host coral as megalopae and then modify coral morphology by inducing the growth of pits or galls, which they live in for the rest of their lives (Utinomi, 1944; Castro, 1976; Simon-Blecher & Achituv, 1997; Simon-Blecher *et al.*, 1999; van der Meij, 2012). Gall crabs display a high degree of specificity, mostly at host genus level (Kropp, 1990; van der Meij, 2015), more so in the Indo-Pacific than in the Atlantic (Kropp & Manning, 1987; van der Meij & Nieman, *in press*). They are common but easily overlooked inhabitants of coral reefs (Hoeksema & van der Meij, 2013). Cryptochirids are an especially interesting group as they can be efficiently studied because of their visibility on the reef surface (Fig. 1), like corals and fish, two taxa that have been the mainstay of reef ecological analyses partly for this reason.

Earlier studies on the occurrence rates of gall crabs were discussed in [van der Meij & Hoeksema \(2013\)](#) and show that gall crab prevalence in host corals ranges between 10 and 37%, but generally around 20% of the host corals are inhabited ([Kramarsky-Winter, Galil & Loya, 1995](#); [Simon-Blecher & Achituv, 1997](#); [Carricart-Ganivet et al., 2004](#); [Johnsson et al., 2006](#); [Oigman-Pszczol & Creed, 2006](#); [Nogueira et al., 2014](#)). The observed variation in gall crab occurrence rates within these studies indicates possible links to depth, host species and/or natural and anthropogenic stresses ([van der Meij & Hoeksema, 2013](#)). Also, the host colony size may have an effect on the associated fauna composition ([Schiemer, Niedermüller & Herler, 2009](#); [Carvalho et al., 2014](#)), and hence host size could also be of influence to the occurrence patterns of cryptochirids. Valid comparisons between studies are, however, hard to be made because of differences in sampling methodology.

The focus of this study was to examine the primary factors affecting the occurrence patterns of three shallow-water Atlantic gall crab species, *Opecarcinus hypostegus* ([Shaw & Hopkins, 1977](#)), *Troglocarcinus corallicola* ([Verrill, 1908](#)) and *Kroppcarcinus siderastreicola* ([Badaro et al., 2012](#)). Each of these gall crab species is associated with distinct host coral families or genera ([van der Meij, 2014](#), and references therein). *Opecarcinus hypostegus* is associated with five Atlantic species of the coral family Agariciidae ([Kropp & Manning, 1987](#); [van der Meij, 2014](#)). *Troglocarcinus corallicola* is a generalist that occurs in association with a wide variety of hosts ([Kropp & Manning, 1987](#)). Off Curaçao, 14 coral species attributed to four different Atlantic coral families were recorded as hosts for *T. corallicola* by [van der Meij \(2014\)](#). *Kroppcarcinus siderastreicola* is associated with the astrocoeniid *Stephanocoenia intersepta* and members of the Siderastreidae ([Badaro et al., 2012](#); [Nogueira et al., 2014](#); [van der Meij, 2014](#)). The level of host specificity in these obligate crab species may have an important effect on their rate of occurrence, depth distribution and vulnerability to local extinction. The mechanisms predicted to influence gall crab occurrence patterns, in addition to the general availability of the host coral species, that were examined in this study, are: (I) associations with particular host species and (II) a restricted depth distribution and (III) host colony surface.

MATERIALS & METHODS

Data collection

Between 12 March and 28 April 2014 a survey was conducted off Curaçao (Dutch Caribbean) in the southern part of the Caribbean Sea. This research was performed under the annual research permit (48584) issued by the Curaçaoan Ministry of Health, Environment and Nature (GMN) to the CARMABI foundation. At 27 localities on the leeward side of the island occurrence patterns and depth distributions of three gall crab species (*Opecarcinus hypostegus*, *Troglocarcinus corallicola* and *Kroppcarcinus siderastreicola*) were examined ([Fig. 2](#) and [Table S1](#)). Surveys were conducted using belt transects of 5 m² (10 m × 0.5 m) at three depth intervals (6, 12 and 18 m) at all localities, resulting in a total belt transect survey of 405 m². Within a belt transect all the colonies of coral species listed as host to cryptochirids by [van der Meij \(2014\)](#) were counted, and the diameter (*d*) of the colony was measured at the broadest part ([Fig. 3](#)). Many

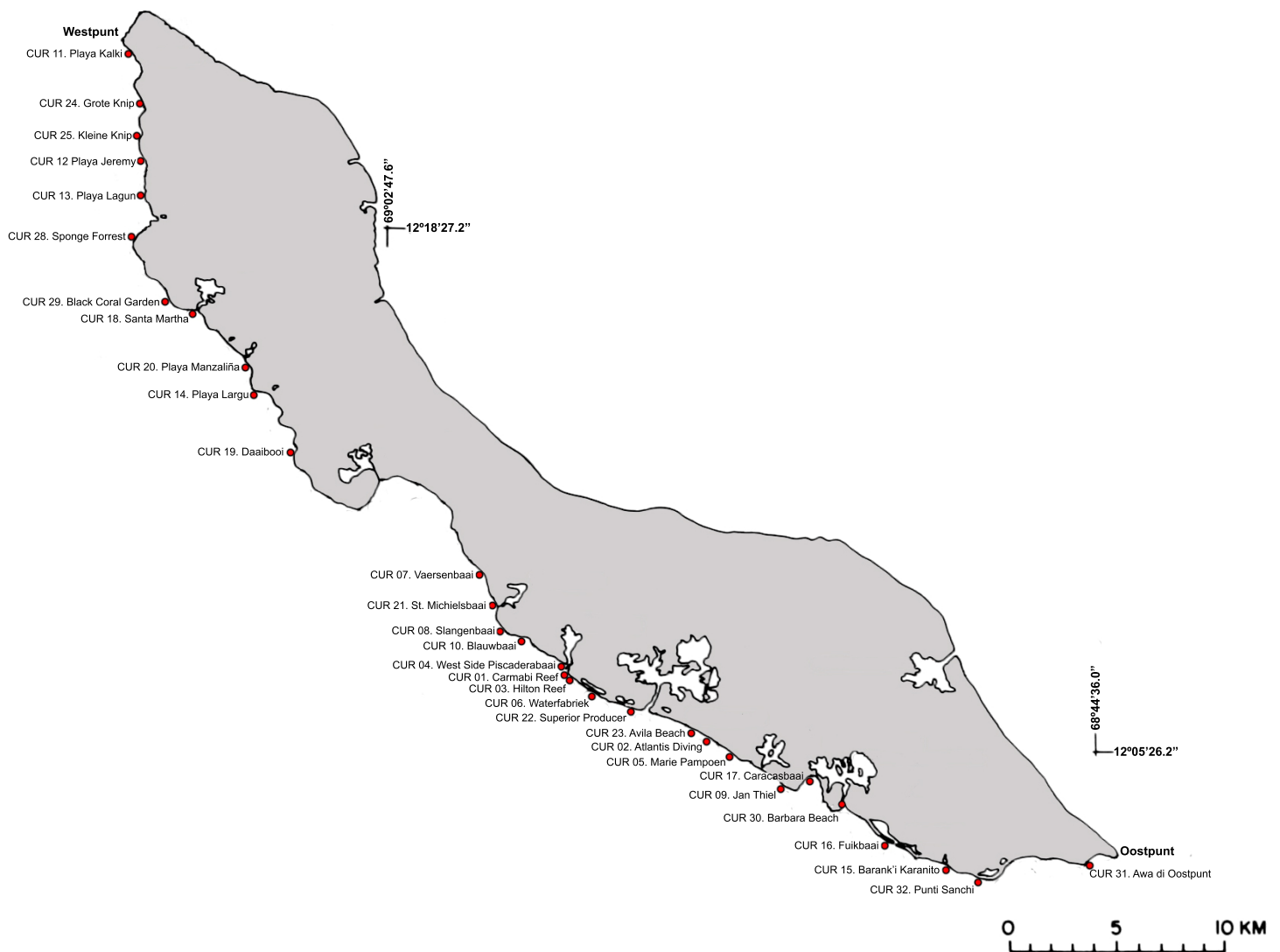


Figure 2 Sampling localities along the leeward side off Curaçao. Detailed locality data is provided in [Table S1](#).

Cryptochiridae host corals in the Caribbean have (sub)massive, hemispherical colonies or consist of flat plates. Coral colonies were therefore considered to be round-shaped, thus colony surface area (S) was calculated as $S = \frac{1}{4}\pi d^2$. For some species this might result in a slight underestimation of colony surface area, e.g., for *Agaricia agaricites* with its upright, bifacial fronds. The number of gall crab dwellings was counted for each individual coral colony. The occurrence rates of the crab dwellings were described using the concepts prevalence and density. Prevalence was determined as the mean proportion of host coral colonies inhabited by gall crabs, whereas density was determined as the mean number of gall crab specimens per 1 m² host colony surface area. Coral density was expressed in surface area (m²) or number of colonies (n) per transect.

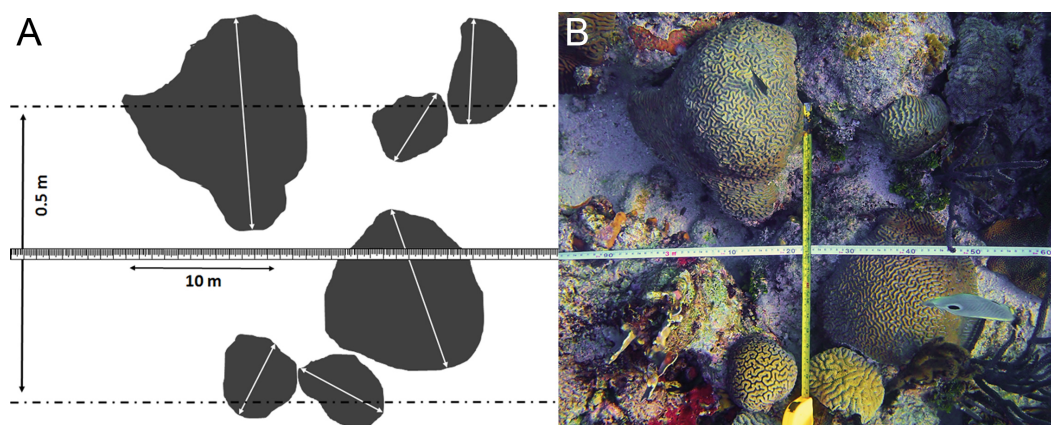


Figure 3 Belt transect survey method used in this study. (A) Schematic view of the belt transect survey method based on (B) the belt transect survey at locality CAR06 at 6 m depth.

Gall crab specimens were not collected for identification, given the limited time frame during the belt surveys. Based upon the findings by *van der Meij (2014)*—who sampled approximately 80 lots of gall crabs off Curaçao in 2013 and found absolute host specificity patterns—we attributed all encountered gall crabs in the present study inhabiting Agariciidae to *O. hypostegus*, inhabiting the coral families Meandrinidae, Merulinidae, Montastraeidae or Mussidae to *T. corallicola* and the gall crabs dwelling in Siderastreaeidae and Astrocoeniidae to *K. siderastreicola*. The corals were visually identified to species level during the surveys using *Humann & Deloach (2002)*, Coralpedia (<http://coralpedia.bio.warwick.ac.uk>) and the Coral IDC tool (<http://www.researchstationcarmabi.org>). Coral nomenclature was updated following (*Budd et al., 2012*), all species authorities are provided in [Table 1](#).

Statistical analyses

To determine if there were differences in the coral distribution over the surveyed depths (6, 12 and 18 m) a Friedman test was used. The surface area (m^2) and no. of colonies (n) were compared per coral species over depth intervals at the 27 localities. When a significant difference over depth was obtained, post hoc analyses were run using separate Wilcoxon signed-rank tests, to examine the differences between the depth intervals. To examine whether the observed gall crab prevalence is linked to the general availability of their host corals, a Spearman rank correlation (one-sided) was used to test for a correlation between the number of available host colonies and the number of inhabited host colonies. The influence of depth or host species on the gall crab prevalence was examined using a Chi-square test. When a significant interaction was encountered a post hoc analysis was run to examine the differences in gall crab prevalence between the depth intervals or host species. For each post hoc analysis a Bonferroni correction was applied dividing the significance level of $p = 0.05$ through the number of post hoc tests. All statistical analyses were executed using SPSS Statistics 21 (IBM Corp. in Armonk, NY, 2012). Figures were created with Graphpad Prism v. 5 (GraphPad Software, San Diego, California, USA) to

Table 1 Overview of the coral species off Curaçao recorded as host to Atlantic cryptochirids based on *van der Meij (2014)*. The total number of encountered colonies, inhabited colonies, dwellings per colony and dwellings per inhabited colony in the present study are provided.

| Gall crab species | Coral family | Coral species | Encountered colonies (n) | Inhabited colonies (n) | Dwellings/colony | Dwellings/inhab. colonies |
|--|----------------|---|--|------------------------|------------------|---------------------------|
| <i>Opecarcinus hypostegus</i> | Agariciidae | <i>Agaricia agaricites</i> (Linnaeus, 1758) | 505 | 53 | 0.14 | 1.34 |
| | | <i>Agaricia fragilis</i> Dana, 1846 | – | – | – | – |
| | | <i>Agaricia grahamae</i> Wells, 1973 | – | – | – | – |
| | | <i>Agaricia humilis</i> Verrill, 1901 | 44 | 8 | 0.18 | 1.00 |
| | | <i>Agaricia lamarcki</i> Milne Edwards and Haime, 1851 | 87 | 56 | 0.98 | 1.55 |
| <i>Troglocarcinus corallicola</i> | Meandrinidae | <i>Dendrogyra cylindrus</i> Ehrenberg, 1834 | – | – | – | – |
| | | <i>Dichocoenia stokesii</i> Milne Edwards and Haime, 1848 | 7 | 1 | 0.14 | 1.00 |
| | | <i>Meandrina meandrites</i> (Linnaeus, 1758) | 90 | 2 | 0.02 | 1.00 |
| | Merulinidae | <i>Orbicella annularis</i> (Ellis and Solander, 1786) | 332 | 72 | 0.32 | 1.46 |
| | | <i>Orbicella faveolata</i> (Ellis and Solander, 1786) | 106 | 27 | 0.37 | 1.44 |
| | | <i>Orbicella franksi</i> (Gregory, 1895) | 126 | 48 | 0.52 | 1.38 |
| | | <i>Montastraea cavernosa</i> (Linnaeus, 1766) | 160 | 44 | 0.38 | 1.39 |
| | Mussidae | <i>Colpophyllia natans</i> (Houttuyn, 1772) | 60 | 12 | 0.27 | 1.33 |
| | | <i>Diploria labyrinthiformis</i> (Linnaeus, 1758) | 25 | 3 | 0.12 | 1.00 |
| | | <i>Favia fragum</i> (Esper, 1795) | – | – | – | – |
| <i>Manicina areolata</i> (Linnaeus, 1758) | | – | – | – | – | |
| <i>Mussa angulosa</i> (Pallas, 1766) | | – | – | – | – | |
| <i>Pseudodiploria clivosa</i> (Ellis and Solander, 1786) | | 6 | 3 | 0.67 | 1.33 | |
| <i>Kroppcarcinus siderastreicola</i> | Siderastreidae | <i>Pseudodiploria strigosa</i> (Dana, 1846) | 65 | 13 | 0.48 | 2.38 |
| | | <i>Siderastrea siderea</i> (Ellis and Solander, 1786) | 190 | 33 | 0.44 | 2.52 |
| | | Astrocoeniidae | <i>Stephanocoenia intersepta</i> (Lamarck, 1816) | 71 | 5 | 0.08 |

visualize the coral density and gall crab prevalence data, the latter using coenoclines of the mean number of available and inhabited coral colonies within the belt transects.

RESULTS

Within the total 405 m² of belt transects 1,874 coral colonies were examined, with 380 found to be inhabited. Out of 21 known cryptochirid host species, 15 were encountered. The most abundant coral was *Agaricia agaricites* ($n = 505$), followed by *Orbicella annularis* ($n = 332$) and *Siderastrea siderea* ($n = 190$). In contrast, *Dichocoenia stokesii* ($n = 7$) and *Pseudodiploria clivosa* ($n = 6$) were rarely encountered within the transect surveys and the coral species *Agaricia fragilis*, *A. grahamae*, *Favia fragum*, *Manicina areolata* and *Mussa angulosa* were not observed at all during the present study (Table 1). In total 583 gall crab dwellings (*Opecarcinus hypostegus* $n = 166$, *Troglocarcinus corallicola* $n = 328$, *Kroppcarcinus siderastreicola* $n = 89$) were observed. The highest number of dwellings in a single coral was 24, observed in a colony of *Siderastrea siderea* at 6 m depth. The overall coral cover and diversity in a 10 km² radius from Curaçao's capital Willemstad was lower than at the other localities, but this difference was not significant.

Coral depth distribution

The depth distribution was examined for known host corals of cryptochirids off Curaçao in both surface area (m²) and number of colonies (n). The corals are hereafter grouped according to their associated gall crab species: *Opecarcinus hypostegus* (Agariciidae), *Troglocarcinus corallicola* (Meandrinidae, Merulinidae, Montastraeidae, Mussidae) and *Kroppcarcinus siderastreicola* (*Siderastrea*, *Stephanocoenia*).

Agariciidae

In the belt transects three species of Agariciidae were encountered: *Agaricia agaricites*, *A. humilis* and *A. lamarcki*. The abundance of the agariciid species differed over the three depth intervals in both surface area (m²) and no. of colonies (n) (Fig. 4). Post hoc tests revealed a significant increase from 6 m to 12 m depth and from 6 m to 18 m depth (Table 2). Distinct depth distributions were found for the three agariciid species encountered in this study. At all depth intervals *Agaricia agaricites* was the most dominant species (Fig. 4). An increase in the *A. agaricites* surface area and number of colonies was found over increasing depth. Post hoc tests revealed this increase was significant for the surface area and number of colonies from 6 m to 12 m depth. From 6 m to 18 m depth the increase was only significant for the surface area (Table 2). *Agaricia lamarcki* occurred at 6 m in very low abundance, becoming significantly more abundant with increasing depth (Table 2 and Fig. 4). Post hoc tests revealed a significant increase from 6 to 12 m, from 6 to 18 m and from 12 to 18 m depth, except for the number of colonies between 6 and 12 m (Table 2). *Agaricia humilis* occurred at all depths in low abundances and colony sizes were small compared to *A. agaricites* and *A. lamarcki* (Fig. 4).

Meandrinidae, Merulinidae, Montastraeidae, Mussidae

The abundance of the host corals of *Troglocarcinus corallicola* did not statistically differ over depth in surface area (m²) or number of colonies (n), but did reveal differences in the

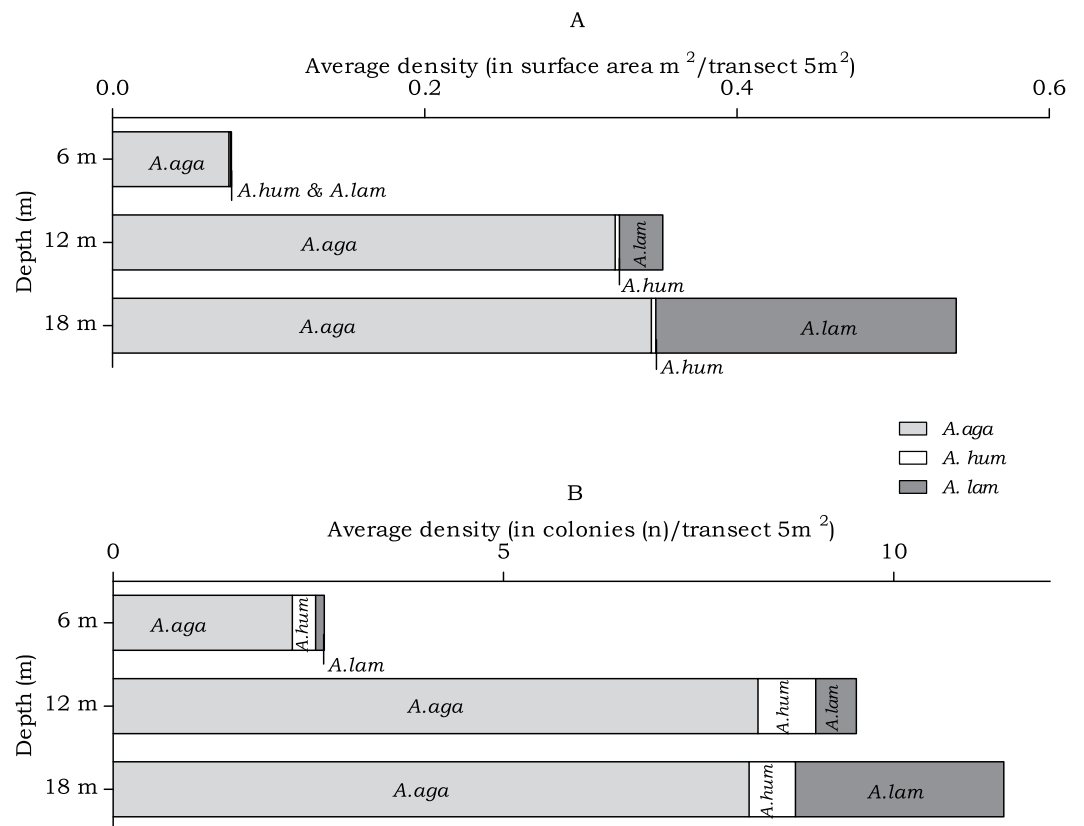


Figure 4 Average Agariciidae coral density off Curaçao. (A) surface area (m²) and (B) colonies (*n*) per species per depth interval.

Table 2 Statistical differences in Agariciidae density between depth intervals.

| Coral species | Friedman test | Post Hoc tests | | |
|---|--------------------------------|------------------------------|------------------------------|------------------------------|
| | | 6 m–12 m | 6 m–18 m | 12 m–18 m |
| All species surface area (m ²) | $X^2(2) = 22.824, p < 0.001^*$ | $Z = -3.371, p < 0.001^{**}$ | $Z = -3.721, p < 0.001^{**}$ | $Z = -1.384, p = 0.173$ |
| All species colonies (<i>n</i>) | $X^2(2) = 19.146, p < 0.001^*$ | $Z = -3.424, p < 0.001^{**}$ | $Z = -3.579, p < 0.001^{**}$ | $Z = -0.315, p = 0.763$ |
| <i>A. agaricites</i> surface area (m ²) | $X^2(2) = 11.043, p = 0.003^*$ | $Z = -3.036, p = 0.001^{**}$ | $Z = -2.971, p = 0.002^{**}$ | $Z = -0.276, p = 0.799$ |
| <i>A. agaricites</i> colonies (<i>n</i>) | $X^2(2) = 11.890, p = 0.002^*$ | $Z = -3.200, p = 0.001^{**}$ | $Z = -2.304, p = 0.020$ | $Z = -0.439, p = 0.673$ |
| <i>A. lamarcki</i> surface area (m ²) | $X^2(2) = 25.914, p < 0.001^*$ | $Z = -2.701, p = 0.004^{**}$ | $Z = -3.724, p < 0.001^{**}$ | $Z = -3.042, p = 0.001^{**}$ |
| <i>A. lamarcki</i> colonies (<i>n</i>) | $X^2(2) = 24.471, p < 0.001^*$ | $Z = -2.326, p = 0.027$ | $Z = -3.631, p < 0.001^{**}$ | $Z = -3.287, p < 0.001^{**}$ |
| <i>A. humilis</i> surface area (m ²) | $X^2(2) = 7.536, p = 0.0210^*$ | $Z = -2.342, p = 0.016$ | $Z = -1.600, p = 0.123$ | $Z = -0.543, p = 0.605$ |
| <i>A. humilis</i> colonies (<i>n</i>) | $X^2(2) = 4.509, p = 0.1100$ | – | – | – |

Notes.

*Indicates statistical significance ($p = 0.05$).

**Indicates statistical significance after Bonferroni correction, applied for the post hoc tests ($p = 0.0125$).

distribution ranges of these coral species. At all depths members of the Merulinidae family were the most dominant. *Orbicella annularis* and *O. faveolata* showed similar density (in m²) at the 6 m interval, but not in number of colonies. *Orbicella annularis* colonies were more numerous but smaller than those of *O. faveolata*. For the genus, *O. franksi* had the

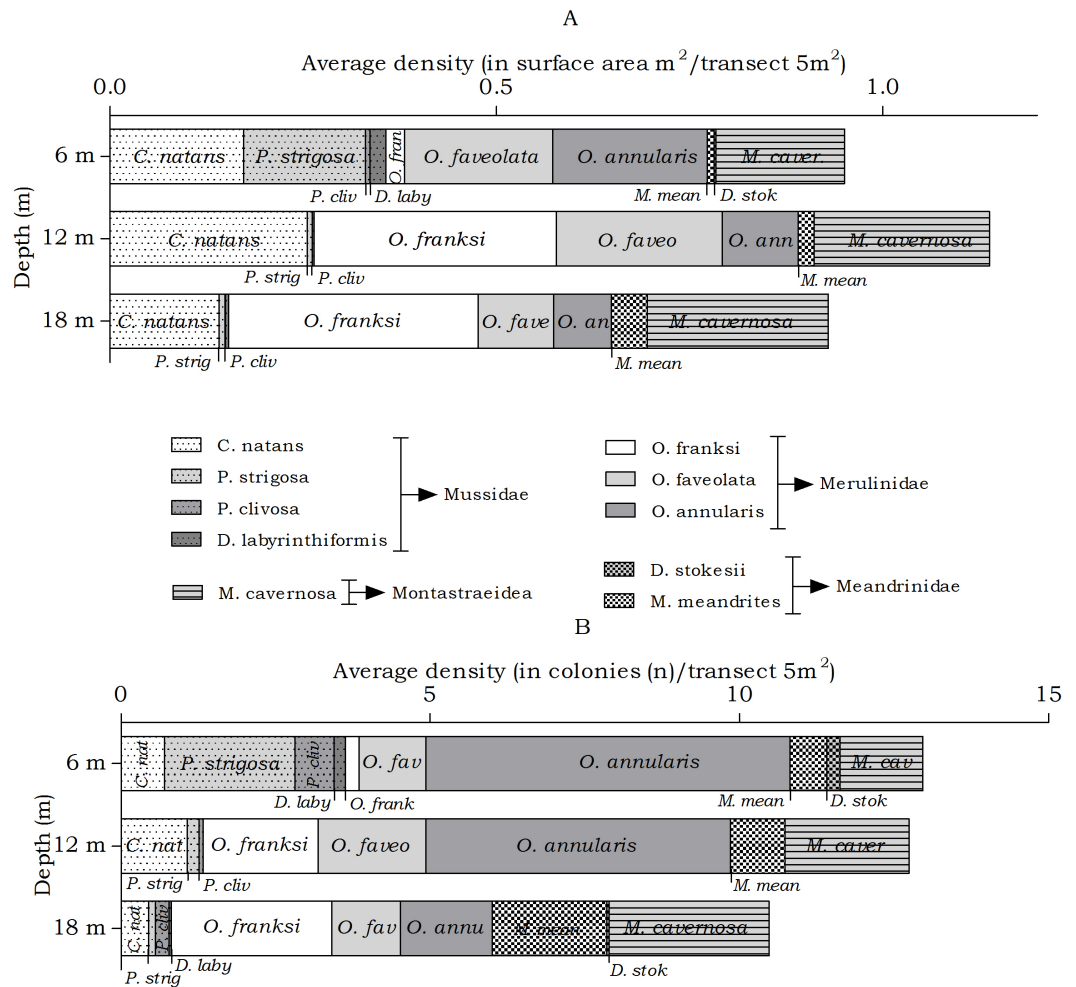


Figure 5 Average coral density (Meandrinidae, Merulinidae, Montastraeidae, Mussidae) off Curaçao. (A) surface area (m^2) and (B) colonies (n) per species per depth interval.

highest surface area at the 12 and 18 m intervals (Fig. 5). Significant differences over depth were only found for *O. franksi*, *Pseudodiploria strigosa*, *Meandrina meandrites* and *Diploria labyrinthiformis* (Table 3), yet at all depth intervals *D. labyrinthiformis* was relatively rare. *Pseudodiploria strigosa* has a distinct shallow (6 m) distribution, whereas *M. meandrites* becomes more abundant with depth. *Colpophyllia natans* and *Montastraea cavernosa* are rather dominant at all depths (Fig. 5).

Siderastrea*, *Stephanocoenia

The abundance of the coral species *Siderastrea siderea* and *Stephanocoenia intersepta*, host to *Kroppcarcinus siderastreicola*, differed statistically over depth in number of colonies, but post hoc tests showed no significant difference between the depth intervals (Table 4). At the three depths *S. siderea* is the more dominant species (Fig. 6). *Stephanocoenia intersepta* abundances significantly differed in surface area and number of colonies. Post hoc tests revealed a significant increase in abundance from 6 m to 18 m depth as well as from 12 m

Table 3 Statistical differences in coral density of Meandrinidae, Merulinidae, Montastraeidae, and Mussidae between depth intervals.

| Coral species | Friedman test | Post Hoc tests | | |
|---|--------------------------------|------------------------------|------------------------------|-------------------------|
| | | 6 m–12 m | 6 m–18 m | 12 m–18 m |
| All species surface area (m ²) | $X^2(2) = 0.519, p = 0.826$ | – | – | – |
| All species colonies (<i>n</i>) | $X^2(2) = 0.585, p = 0.753$ | – | – | – |
| <i>Colpophyllia natans</i> surface area (m ²) | $X^2(2) = 0.794, p = 0.695$ | – | – | – |
| <i>Colpophyllia natans</i> colonies (<i>n</i>) | $X^2(2) = 1.733, p = 0.430$ | – | – | – |
| <i>Pseudodiploria strigosa</i> surface area (m ²) | $X^2(2) = 17.370, p < 0.001^*$ | $Z = -3.124, p = 0.001^{**}$ | $Z = -2.638, p = 0.006^{**}$ | $Z = -0.105, p = 1.000$ |
| <i>Pseudodiploria strigosa</i> colonies (<i>n</i>) | $X^2(2) = 16.302, p < 0.001^*$ | $Z = -2.991, p = 0.001^{**}$ | $Z = -3.134, p = 0.001^{**}$ | $Z = -0.649, p = 0.531$ |
| <i>Pseudodiploria clivosa</i> surface area (m ²) | $X^2(2) = 5.200, p = 0.136$ | – | – | – |
| <i>Pseudodiploria clivosa</i> colonies (<i>n</i>) | $X^2(2) = 5.200, p = 0.136$ | – | – | – |
| <i>Diploria labyrinthiformis</i> surface area (m ²) | $X^2(2) = 6.533, p = 0.039$ | $Z = -1.956, p = 0.054$ | $Z = -1.804, p = 0.077$ | $Z = -0.772, p = 0.477$ |
| <i>Diploria labyrinthiformis</i> colonies (<i>n</i>) | $X^2(2) = 6.045, p = 0.047$ | $Z = -2.438, p = 0.016$ | $Z = -2.047, p = 0.045$ | $Z = -1.414, p = 0.289$ |
| <i>Orbicella franksi</i> surface area (m ²) | $X^2(2) = 12.824, p = 0.001^*$ | $Z = -2.769, p = 0.004^{**}$ | $Z = -2.760, p = 0.003^{**}$ | $Z = -0.201, p = 0.860$ |
| <i>Orbicella franksi</i> colonies (<i>n</i>) | $X^2(2) = 15.631, p < 0.001^*$ | $Z = -3.069, p = 0.001^{**}$ | $Z = -3.062, p < 0.001^{**}$ | $Z = -0.920, p = 0.371$ |
| <i>Orbicella faveolata</i> surface area (m ²) | $X^2(2) = 0.102, p = 0.969$ | – | – | – |
| <i>Orbicella faveolata</i> colonies (<i>n</i>) | $X^2(2) = 0.102, p = 0.969$ | – | – | – |
| <i>Orbicella annularis</i> surface area (m ²) | $X^2(2) = 4.667, p = 0.102$ | – | – | – |
| <i>Orbicella annularis</i> colonies (<i>n</i>) | $X^2(2) = 5.935, p = 0.052$ | – | – | – |
| <i>Dichocoenia stokesii</i> surface area (m ²) | $X^2(2) = 5.600, p = 0.111$ | – | – | – |
| <i>Dichocoenia stokesii</i> colonies (<i>n</i>) | $X^2(2) = 4.667, p = 0.222$ | – | – | – |
| <i>Meandrina meandrites</i> surface area (m ²) | $X^2(2) = 9.851, p = 0.007^*$ | $Z = -2.053, p = 0.039$ | $Z = -3.431, p < 0.001^{**}$ | $Z = -2.286, p = 0.021$ |
| <i>Meandrina meandrites</i> colonies (<i>n</i>) | $X^2(2) = 11.725, p = 0.002^*$ | $Z = -1.543, p = 0.165$ | $Z = -3.003, p = 0.001^{**}$ | $Z = -2.429, p = 0.013$ |
| <i>Montastraea cavernosa</i> surface area (m ²) | $X^2(2) = 5.267, p = 0.073$ | – | – | – |
| <i>Montastraea cavernosa</i> colonies (<i>n</i>) | $X^2(2) = 5.886, p = 0.053$ | – | – | – |

Notes.*Indicates statistical significance ($p = 0.05$).**Indicates statistical significance after Bonferroni correction, applied for the post hoc tests ($p = 0.0125$).

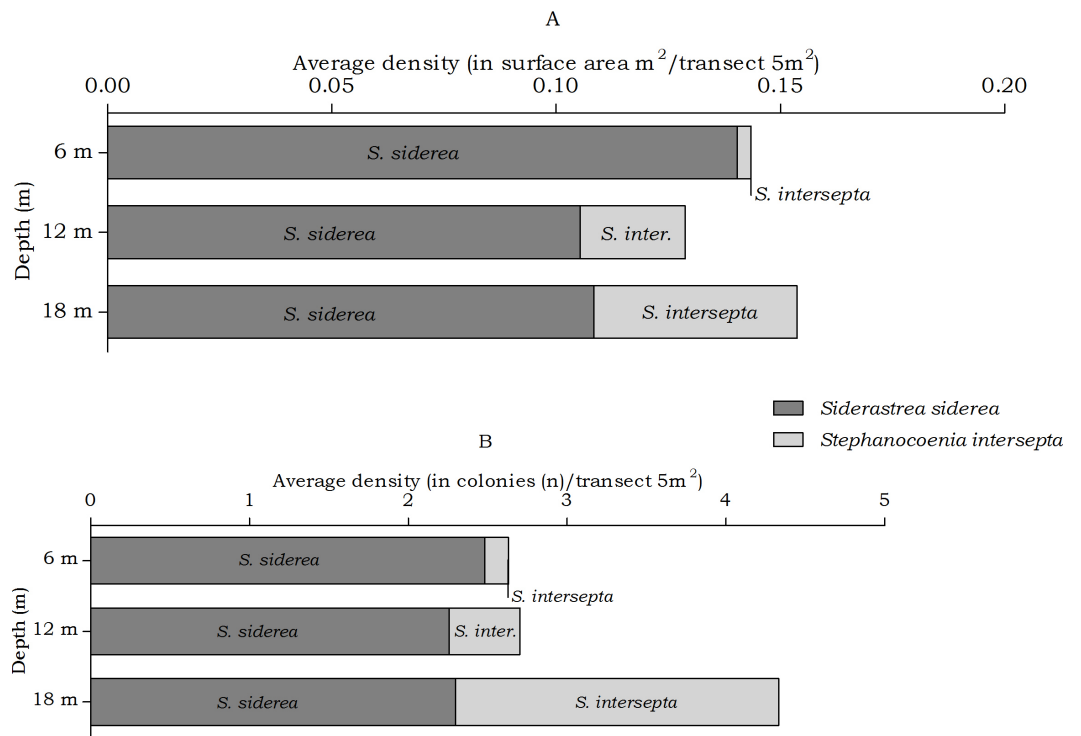


Figure 6 Average coral density of *Siderastrea* and *Stephanocoenia* off Curaçao. (A) surface area (m²) and (B) colonies (*n*) per species per depth interval.

Table 4 Statistical differences in *Siderastrea siderea* and *Stephanocoenia intersepta* density between depth intervals.

| Coral species | Friedman test | Post Hoc tests | | |
|---|--------------------------------|-------------------------|------------------------------|------------------------------|
| | | 6 m–12 m | 6 m–18 m | 12 m–18 m |
| All species surface area (m ²) | $X^2(2) = 5.057, p = 0.082$ | – | – | – |
| All species colonies (<i>n</i>) | $X^2(2) = 12.733, p = 0.001^*$ | $Z = -0.123, p = 0.911$ | $Z = -1.999, p = 0.045$ | $Z = -2.113, p = 0.034$ |
| <i>S. siderea</i> surface area (m ²) | $X^2(2) = 1.021, p = 0.620$ | – | – | – |
| <i>S. siderea</i> colonies (<i>n</i>) | $X^2(2) = 1.717, p = 0.433$ | – | – | – |
| <i>S. intersepta</i> surface area (m ²) | $X^2(2) = 23.172, p < 0.001^*$ | $Z = -1.379, p = 0.182$ | $Z = -3.823, p < 0.001^{**}$ | $Z = -3.150, p = 0.001^{**}$ |
| <i>S. intersepta</i> colonies (<i>n</i>) | $X^2(2) = 26.964, p < 0.001^*$ | $Z = -1.732, p = 0.148$ | $Z = -4.116, p < 0.001^{**}$ | $Z = -3.553, p < 0.001^{**}$ |

Notes.

*Indicates statistical significance ($p = 0.05$).

**Indicates statistical significance after Bonferroni correction, applied for the post hoc tests ($p = 0.0125$).

to 18 m depth (Table 4). At 18 m depth the number of *S. intersepta* colonies is roughly equal to that of *S. siderea* (Fig. 6B), with *S. siderea* colonies being larger in size.

Gall crab occurrence rates *Opecarcinus hypostegus*

The prevalence and density of *O. hypostegus* differed over depth for each agariciid coral (Table 5 and Fig. 7). The prevalence of this species was highest at 18 m depth where just below 25% of the available hosts were inhabited, whilst at 6 m depth 14% of the agariciid

corals was inhabited. In contrast, the mean *O. hypostegus* density (n/m^2) was greatest at 6 m and was lowest at 18 m depth. *Opecarcinus hypostegus* shows high density numbers in *Agaricia humilis* at all depth intervals, but these are linked to the small size of the colonies (Fig. 4). The prevalence at 6 m depth were the highest in *A. agaricites* (19.7 %), but at 12 and 18 m the highest prevalence was found in *A. lamarcki* (Table 5). A significant interaction was measured between prevalence and the depth intervals ($X(2) = 14.568$, $p = 0.001$). Post hoc tests revealed a difference in the *O. hypostegus* prevalence between 6 m and 18 m depth ($X(1) = 6.211$, $p = 0.017$) as well as between 12 m and 18 m depth ($X(1) = 11.128$, $p = 0.001$). A significant interaction was also measured between the *O. hypostegus* prevalence and the host species ($X(2) = 138.872$, $p < 0.001$). Post hoc tests revealed a difference in prevalence between *A. agaricites* and *A. lamarcki* ($X(1) = 138.803$, $p < 0.001$) and between *A. humilis* and *A. lamarcki* ($X(1) = 23.607$, $p < 0.001$).

Troglocarcinus corallicola

The prevalence in all hosts across the depth intervals was stable around 20%. The density showed a small decrease over increasing depth from 7.51 to 5.12 (n/m^2). The *T. corallicola* prevalence and density rates found in the corals species separately did differ over depth (Table 6 and Fig. 8). No significant interaction was measured between the *T. corallicola* prevalence and the various depth intervals ($X(2) = 0.236$, $p = 0.891$). However, the interaction between the *T. corallicola* prevalence and the host species was significant ($X(9) = 45.912$, $p < 0.001$). Post hoc tests revealed a significant difference between the prevalence rate in *M. meandrites* and in all other coral species ($X(1)$, $p \leq 0.001$), except for the lesser abundant coral species *D. stokesii* and *D. labyrinthiformis*. Furthermore, a significant difference in prevalence was found between *O. franksi* and *O. annularis* ($X(1) = 12.718$, $p = 0.001$).

Kroppcarcinus siderastreicola

Over all depth intervals, the highest *K. siderastreicola* prevalence was found in the host coral *Siderastrea siderea* and its prevalence and density was highest at 6 m depth (Table 7 and Fig. 9). A significant interaction was measured between the *K. siderastreicola* prevalence and the depth intervals ($X(2) = 17.723$, $p < 0.001$). Post hoc tests revealed a difference in the *K. siderastreicola* prevalence between 6 m and 12 m depth ($X(1) = 9.181$, $p = 0.003$) as well as between 6 m and 18 m depth ($X(1) = 14.192$, $p < 0.001$). However, no difference in *K. siderastreicola* prevalence was found between 12 m and 18 m depth ($X(1) = 0.060$, $p = 1.000$). A significant difference in *K. siderastreicola* prevalence was also measured between the coral species ($X(1) = 4.430$, $p = 0.047$).

DISCUSSION

Coral depth distribution

In the belt transects we found that for the Agariciidae, *Agaricia agaricites* was the dominant species in surface area and number of colonies at all three transect depths followed by *A. lamarcki* and *A. humilis*. The total Agariciidae abundance, as well as the abundance of all three agariciid species encountered within the belt transects, showed an increase

Table 5 *Opecarcinus hypostegus* occurrence variables over depth intervals. The total number of host colonies (Col. total) and the mean number of host colonies per transect (Col. mean), with the total and mean number of encountered dwellings between the brackets. Also, the total *O. hypostegus* prevalence (% Inh.) and mean density (n/m²) per transect are provided.

| Coral species | 6 m | | | | 12 m | | | | 18 m | | | |
|----------------------------|------------|-------------|--------|---------|------------|-------------|--------|---------|------------|--------------|--------|---------|
| | Col. total | Col. mean | % Inh. | Density | Col. total | Col. mean | % Inh. | Density | Col. total | Col. mean | % Inh. | Density |
| All species | 73 (9) | 2.70 (0.33) | 14.0 | 28.24 | 257 (47) | 9.52 (1.74) | 16.6 | 8.81 | 308 (110) | 11.41 (4.07) | 23.7 | 7.85 |
| <i>Agaricia agaricites</i> | 62 (8) | 2.30 (0.30) | 19.7 | 3.92 | 223 (32) | 8.26 (1.19) | 9.2 | 5.96 | 220 (31) | 8.15 (1.15) | 8.4 | 1.84 |
| <i>Agaricia humilis</i> | 8 (1) | 0.30 (0.04) | 8.3 | 81.06 | 20 (3) | 0.74 (0.11) | 18.0 | 42.26 | 16 (4) | 0.59 (0.15) | 23.8 | 88.42 |
| <i>Agaricia lamarcki</i> | 3 (0) | 0.11 (0.00) | 0.0 | 0.00 | 14 (12) | 0.52 (0.44) | 59.3 | 25.03 | 72 (75) | 2.67 (2.78) | 66.9 | 18.08 |

Table 6 *Troglocarcinus corallicola* occurrence variables over depth intervals. The total number of host colonies (Col. total) and the mean number of host colonies per transect (Col. mean), with the total and mean number of encountered dwellings between the brackets. Also, the total *O. hypostegus* prevalence (% Inh.) and mean density (n/m²) per transect are provided.

| Coral species | 6 m | | | | 12 m | | | | 18 m | | | |
|----------------------------------|------------|--------------|--------|---------|------------|--------------|--------|---------|------------|--------------|--------|---------|
| | Col. total | Col. mean | % Inh. | Density | Col. total | Col. mean | % Inh. | Density | Col. total | Col. mean | % Inh. | Density |
| All species | 351 (130) | 13.00 (4.81) | 20.4 | 7.51 | 344 (111) | 12.74 (4.11) | 22.2 | 6.52 | 283 (87) | 10.48 (3.22) | 21.4 | 5.12 |
| <i>Colpophyllia natans</i> | 19 (8) | 0.70 (0.30) | 40.1 | 21.22 | 29 (8) | 1.07 (0.30) | 27.5 | 4.32 | 12 (0) | 0.44 (0.00) | 0.0 | 0.00 |
| <i>Dichocoenia stokesii</i> | 6 (1) | 0.22 (0.04) | 33.3 | 6.48 | 0 (0) | 0.00 (0.00) | – | – | 1 (0) | 0.04 (0.00) | 0.0 | 0.00 |
| <i>Diploria labyrinthiformis</i> | 17 (3) | 0.63 (0.11) | 20.4 | 12.46 | 2 (0) | 0.07 (0.00) | 0.0 | 0.00 | 6 (0) | 0.22 (0.00) | 0.0 | 0.00 |
| <i>Meandrina meandrites</i> | 16 (0) | 0.59 (0.00) | 0.0 | 0.00 | 24 (0) | 0.89 (0.00) | 0.0 | 0.00 | 50 (2) | 1.85 (0.07) | 6.0 | 2.37 |
| <i>Montastraea cavernosa</i> | 36 (19) | 1.33 (0.70) | 26.5 | 7.00 | 54 (27) | 2.00 (1.00) | 38.8 | 6.45 | 70 (15) | 2.59 (0.55) | 12.6 | 1.51 |
| <i>Orbicella annularis</i> | 159 (55) | 5.89 (2.04) | 22.7 | 70.8 | 133 (31) | 4.93 (1.15) | 12.7 | 7.01 | 40 (19) | 1.48 (0.70) | 32.2 | 13.95 |
| <i>Orbicella faveolata</i> | 29 (7) | 1.07 (0.26) | 7.3 | 1.11 | 47 (17) | 1.74 (0.63) | 16.4 | 4.35 | 30 (15) | 1.11 (0.55) | 64.4 | 12.52 |
| <i>Orbicella franksi</i> | 6 (3) | 0.22 (0.11) | 27.8 | 4.82 | 50 (27) | 1.85 (1.00) | 51.6 | 17.83 | 70 (36) | 2.59 (1.33) | 43.0 | 9.32 |
| <i>Pseudodiploria clivosa</i> | 5 (4) | 0.19 (0.15) | 50.0 | 14.74 | 0 (0) | 0.00 (0.00) | – | – | 1 (0) | 0.04 (0.00) | 0.0 | 0.00 |
| <i>Pseudodiploria strigosa</i> | 57 (30) | 2.11 (1.11) | 13.1 | 7.39 | 5 (1) | 0.19 (0.04) | 16.7 | 13.61 | 3 (0) | 0.11 (0.00) | 0.0 | 0.00 |

Table 7 *Kroppcarcinus siderastreicola* occurrence variables over depth intervals. The total number of host colonies (Col. total) and the mean number of host colonies per transect (Col. mean), with the total and mean number of encountered dwellings between the brackets. Also, the total *K. siderastreicola* prevalence (% Inh.) and mean density (n/m^2) per transect are provided.

| Coral species | 6 m | | | | 12 m | | | | 18 m | | | |
|----------------------------------|------------|-------------|--------|---------|------------|-------------|--------|---------|------------|-------------|--------|---------|
| | Col. total | Col. mean | % Inh. | Density | Col. total | Col. mean | % Inh. | Density | Col. total | Col. mean | % Inh. | Density |
| All species | 71 (60) | 2.63 (2.22) | 29.8 | 35.01 | 73 (14) | 2.70 (0.52) | 10.9 | 17.07 | 117 (15) | 4.33 (0.56) | 8.3 | 3.77 |
| <i>Siderastrea siderea</i> | 67 (59) | 2.48 (2.19) | 33.1 | 38.15 | 61 (14) | 2.26 (0.52) | 16.1 | 21.94 | 62 (10) | 2.30 (0.37) | 10.1 | 5.31 |
| <i>Stephanocoenia intersepta</i> | 4 (1) | 0.15 (0.04) | 25.0 | 40.53 | 12 (0) | 0.44 (0.00) | 0.0 | 0.00 | 55 (5) | 2.04 (0.19) | 6.7 | 4.07 |

over increasing depth and distinct depth distributions were retrieved for the three *Agaricia* species (Fig. 4), which is in agreement with [Bongaerts et al. \(2013\)](#). For some of the host corals of *Troglocarcinus corallicola* distinct depth distributions were observed (Fig. 5). *Pseudodiploria strigosa* was a rather abundant species at 6 m, but was rarely encountered at 12 or 18 m depth, whereas *Orbicella franksi* was rarely observed at 6 m, but occurred in high density at 12 and 18 m depth. [Weil & Knowlton \(1994\)](#) showed earlier that *Orbicella* spp., like *Agaricia* spp., have distinct depth zonations. Although less pronounced, an increase in density over depth was also observed for *Meandrina meandrites* and a decrease in density over depth was revealed for the relatively rare (in the belt transects) *Diploria labyrinthiformis*. In turn, and similar to the total *T. corallicola* host coral density, *Colpophyllia natans*, *Orbicella annularis*, *O. faveolata*, *Pseudodiploria clivosa*, *Dichocoenia stokesii* and *Montastraea cavernosa* abundances did not show differences over depth intervals (Fig. 5). For *Siderastrea siderea* no distinct depth zonation was observed, whereas *Stephanocoenia intersepta* became more abundant with increasing depth.

Gall crab occurrence rates

The distinct depth distributions retrieved in this study directly impact the host-specific obligate symbiont fauna. The occurrence rates of *Opecarcinus hypostegus*, strictly associated with Agariciidae corals, followed the availability of the host and highest prevalence changed from *A. agaricites* to *A. lamarcki* with increasing depth (Table 5 and Fig. 7). *Agaricia lamarcki* is known to be the dominant agariciid species beyond 25 m depth off Curaçao ([Bongaerts et al., 2010](#); [Bongaerts et al., 2013](#)). The associated gall crab's depth distribution is known to extend to at least 60 m depth ([van der Meij, van Tienderen & Hoeksema, 2015](#)), and possibly further based on the host's depth distribution ([Bongaerts et al., 2013](#)).

The total available host coral density for *Troglocarcinus corallicola*, a generalist species associated with the coral families Mussidae, Merulinidae, Meandrinidae and Montastraeidae, did not significantly differ between the recorded depths in this study (Fig. 5). The occurrence rates of *T. corallicola* were found affected by neither depth nor host species, and prevalence was stable at about 20%. Although not statistically significant, higher prevalence rates were observed in coral species belonging to the most dominant host coral family Merulinidae at 12 and 18 m depths and within this family, *Orbicella franksi* was significantly more inhabited than *O. annularis*. In addition, the coral species *Meandrina meandrites* was significantly less inhabited than any of the other host corals, except for the least encountered coral species in the present study *Dichocoenia stokesii* and *Diploria*

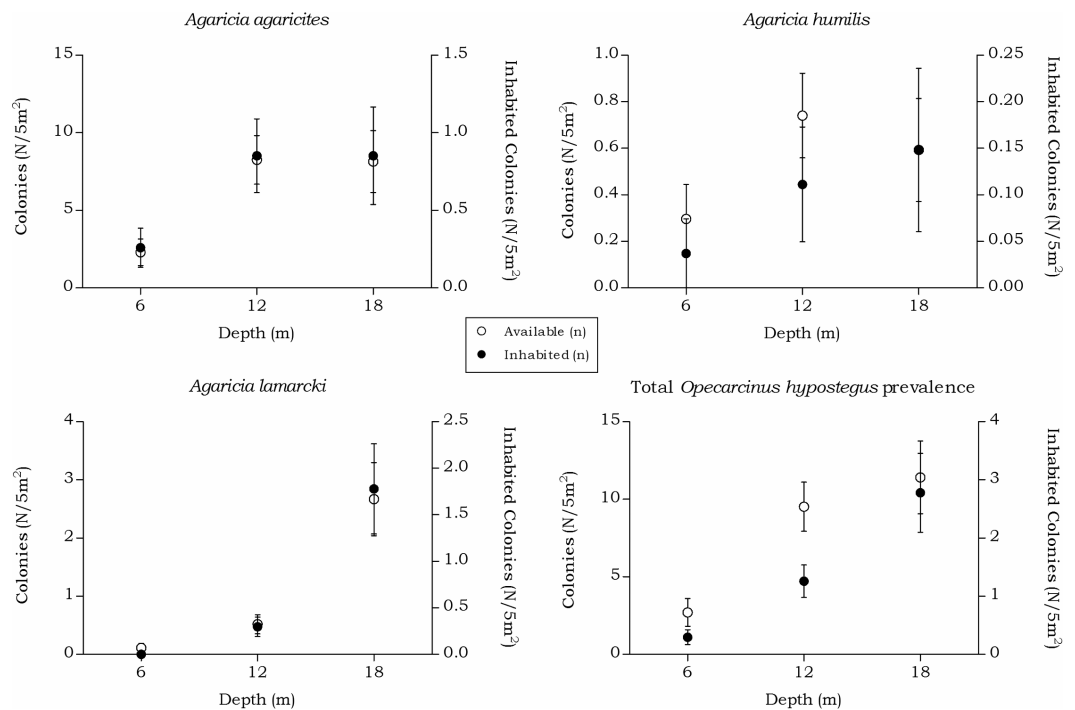


Figure 7 Coenoclines of the mean number of available and inhabited agariciid colonies at the 6, 12 and 18 m depth intervals. Whiskers show standard error. Significant positive correlations between the number of available colonies (n) and number of inhabited colonies (n) were found for all agariciids. With the strongest correlation found for *A. lamarcki* ($R_s = 0.892$, $p < 0.001$), followed by a moderate correlation for *A. agaricites* ($R_s = 0.662$, $p < 0.001$) and *A. humilis* ($R_s = 0.491$, $p < 0.001$). The overall correlation coefficient between the total available and inhabited hosts was strong ($R_s = 0.757$, $p < 0.001$).

labyrinthiformis (Table 6). This could indicate a (yet unknown) disadvantage for inhabiting *M. meandrites* compared to settling in one of the other host coral species. The answer may also lie in the large phylogenetic distance that was reported between Meandrinidae species and corals from the other host coral families Merulinidae, Mussidae and Montastraeidae (Fukami et al., 2008). The tight evolutionary relationship between corals and gall crabs (Kropp, 1990; van der Meij & Reijnen, 2014; van der Meij, 2015) suggests that *T. corallicola*, which more commonly inhabits Merulinidae, Mussidae and Montastraeidae corals, might be less adapted to inhabiting coral species belonging to the phylogenetically distant Meandrinidae family (including *M. meandrites* and *D. stokesii*).

The occurrence rates of the gall crab species *Kroppcarcinus siderastreicola*, associated with *Siderastrea siderea* and *Stephanocoenia intersepta* off Curacao, were found to be mainly affected by depth. The total available host coral density for *K. siderastreicola* did not significantly differ between the recorded depths in this study nor did the density of its most common host species *S. siderea* (Fig. 6). *Stephanocoenia intersepta*, however, did show variation in density over depth with a significant increase in abundance over increasing depth (Fig. 6 and Table 4). Despite the statistically equal host availability over depth, the *K. siderastreicola* occurrence rate decreased with increasing depth. Settling *K. siderastreicola* larvae exhibit a tendency towards shallower water (Table 7).

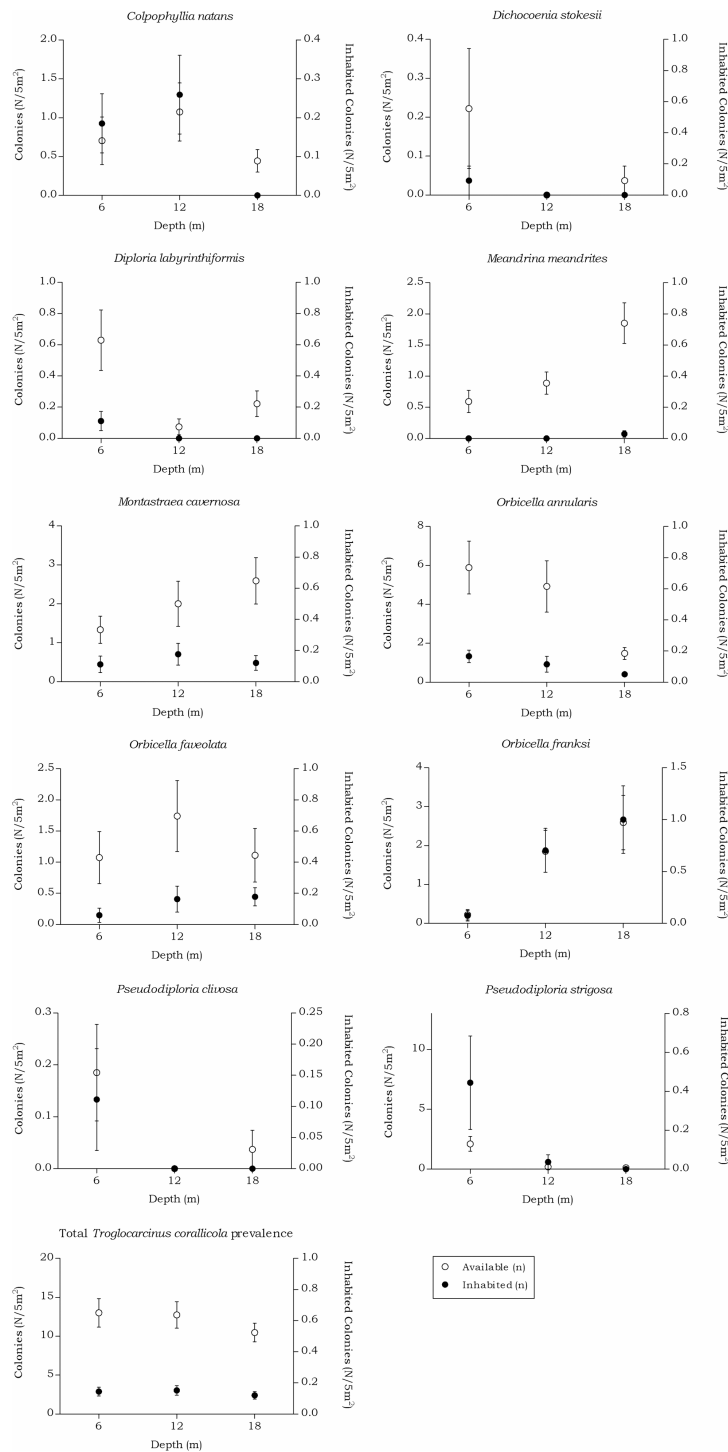


Figure 8 Coenoclines of the mean number of available and inhabited Meandrinidae, Merulinidae, Montastraeidae and Mussidae colonies at the 6, 12 and 18 m depth intervals. Whiskers show standard error. Significant positive correlations between the number of available colonies (n) and number of inhabited colonies (n) were found for all host species, except for *M. meandrites* ($R_s = 0.151$, $p = 0.089$). The strongest correlations were found for members of the Merulinidae family (continued on next page...)

Figure 8 (...continued)

(*O. franksi* $R_s = 0.792$, $p < 0.001$, *O. faveolata* $R_s = 0.723$, $p < 0.001$ and *O. annularis* $R_s = 0.722$, $p < 0.001$), followed by moderate correlations for *M. cavernosa* ($R_s = 0.652$, $p < 0.001$), *P. clivosa* ($R_s = 0.633$, $p < 0.001$), *P. strigosa* ($R_s = 0.572$, $p < 0.001$), *D. stokesii* ($R_s = 0.484$, $p < 0.001$), *C. natans* ($R_s = 0.413$, $p < 0.001$) and *D. labyrinthiformis* ($R_s = 0.413$, $p < 0.001$). The overall correlation between the total available and inhabited host colonies was strong ($R_s = 0.720$, $p < 0.001$).

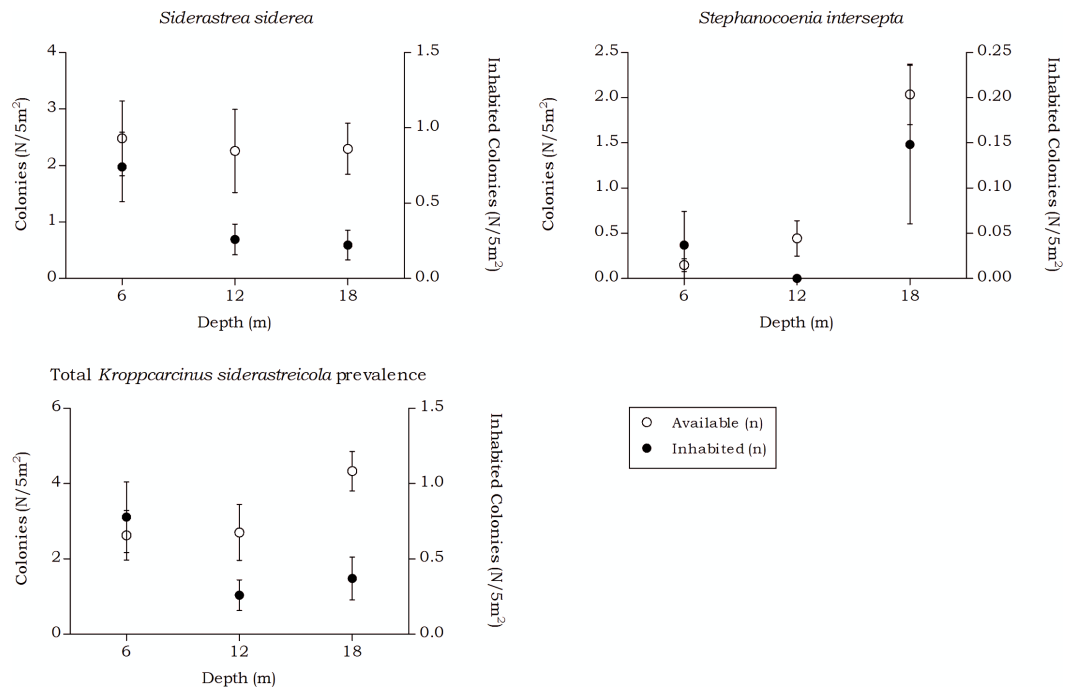


Figure 9 Coenoclines of the mean number of available and inhabited *Siderastrea siderea* and *Stephanocoenia intersepta* colonies at the 6, 12 and 18 m depth intervals. Whiskers show standard error. Significant positive correlations were found between the number of available colonies (n) and number of inhabited colonies (n) for both coral species, with a moderate correlation coefficient for *S. siderea* ($R_s = 0.558$, $p < 0.001$) and a weak correlation coefficient for *Stephanocoenia intersepta* ($R_s = 0.312$, $p = 0.002$). The overall correlation coefficient between the total available and inhabited hosts was moderate ($R_s = 0.470$, $p < 0.001$).

In the Atlantic, a prevalence of ca. 20% has now been recovered for gall crabs on three separate occasions. Apart from this study, in the Mexican Caribbean 21% of *Manicina areolata* corals ($n = 160$) were inhabited by *Troglocarcinus corallicola* (Carricart-Ganivet et al., 2004) and 21% of the *Siderastrea stellata* colonies were inhabited by *K. siderastreicola* in Brazil (Nogueira et al., 2014).

Diversity, distribution and vulnerability

The majority of the observed dwellings were attributed to generalist species *Troglocarcinus corallicola*, followed by *Opecarcinus hypostegus* and *Kroppcarcinus siderastreicola*. For all corals on average 1.42 dwellings per inhabited coral colony were encountered (Table 1). *Kroppcarcinus siderastreicola* averaged 1.86 dwellings per colony, which is comparable to the average of two dwellings per host coral (*Siderastrea stellata*) found by Nogueira et al. (2014).

Following from the intimate relationship between associated taxa and corals, what benefits the coral will ultimately benefit the associate fauna (*Oigman-Pszczol & Creed, 2006*). The presence and abundance of infaunal species increases with increasing coral cover and number of (branching) coral colonies (*Cantera et al., 2003*). Local environmental conditions which favour coral distribution and composition could therefore also have a positive effect on the settlement of associates. Between Piscadera Baai (Piscadera Bay) and Willemstad (*Fig. 2*) coral diversity and cover was lower than in the rest of Curaçao, and the gall crab prevalence dropped from about 20% to 13%. The bay is known to be contaminated with sewage effluent overflow (*Nagelkerken, 2006*). Off Curaçao, Cryptochiridae are more common in non-disturbed areas, which is in line with results for the Indo-Pacific (*van der Meij & Hoeksema, 2013*). Such findings make cryptochirids, and possibly other coral-associated taxa, suitable as environmental indicators. A more complete description of the diversity and distribution of coral-associated invertebrates is needed to understand the roles they play in coral reef ecosystems (*Stella et al., 2011*).

The observed differences in the primary factors affecting the occurrence patterns of the three gall crab species in this study could influence their vulnerability to environmental change. Curaçaoan reefs—and reefs in the wider Caribbean—have been in decline for at least 40 years (*Gardner et al., 2003; Bak, Nieuwland & Meesters, 2005; Nagelkerken et al., 2005; Vermeij et al., 2011*). Between 1973 and 2002 no significant decline in the cover of *Agaricia* species was found, but the cover of other species, mostly those with non-flat, hemispherical colony surfaces such as *Pseudodiploria strigosa*, *Stephanocoenia intersepta*, and *Colpophyllia natans*, decreased with time (*Bak, Nieuwland & Meesters, 2005*). Contrary to this study, a decline in cover of *Agaricia* spp. off Curaçao was reported by (*Nagelkerken et al., 2005*). Juvenile coral abundance has strongly decreased for Agariciidae (*Vermeij et al., 2011*). Specialist species *Opecarcinus hypostegus* and *Kroppcarcinus siderastreicola* have a narrow range of inhabitable host corals, and hence may be more vulnerable to current and future rates of coral cover decline than the generalist cryptochirid species *Troglocarcinus corallicola*. *Opecarcinus hypostegus*' tendency to inhabit deeper waters, however, has an advantage over the shallow water tendency found for *K. siderastreicola*, because in contrast to the declining coral cover in the shallow reefs (10–20 m) no noticeable decrease was detected in the deep reef cover (30–40 m) over 30 years' time off Curaçao (*Bak, Nieuwland & Meesters, 2005*). The “deep reef refugia” hypothesis, which states that mesophotic reefs may act as a refuge in the face of global reef decline (*Bongaerts et al., 2010*), hence might not hold for at least some Atlantic cryptochirid species.

ACKNOWLEDGEMENTS

The research was supported by the CARMABI Research Station and DiveVersity Curaçao. Kaj van Tienderen thanks Yeewah Lau and Cessa Rauch for their support and friendship during the fieldwork. We thank Tohru Naruse and an anonymous reviewer for their comments which greatly helped to improve an earlier version of this paper.

ADDITIONAL INFORMATION AND DECLARATIONS

Funding

Kaj van Tienderen was funded by the JJ ter Pelkwijkfonds, AM Buitendijkfonds and LB Holthuisfonds (all Naturalis). Sancia van der Meij was funded by KNAW (Schure-Beijerinck-Poppingfonds) and the TREUB-maatschappij (Society for the Advancement of Research in the Tropics). The funders had no role in study design, data collection and analysis, decision to publish, or preparation of the manuscript.

Grant Disclosures

The following grant information was disclosed by the authors:

JJ ter Pelkwijkfonds.

AM Buitendijkfonds.

LB Holthuisfonds.

Schure-Beijerinck-Poppingfonds (KNAW).

TREUB-maatschappij.

Competing Interests

The authors declare there are no competing interests.

Author Contributions

- Kaj M. van Tienderen performed the experiments, analyzed the data, wrote the paper, prepared figures and/or tables, reviewed drafts of the paper.
- Sancia E.T. van der Meij conceived and designed the experiments, wrote the paper, reviewed drafts of the paper.

Field Study Permissions

The following information was supplied relating to field study approvals (i.e., approving body and any reference numbers):

Research on Curaçao was performed under the annual research permit (48584) issued by the Curaçaoan Ministry of Health, Environment and Nature (GMN) to the CARMABI foundation.

Data Availability

The following information was supplied regarding data availability:

The raw data was supplied as [Data S1–S3](#).

Supplemental Information

Supplemental information for this article can be found online at <http://dx.doi.org/10.7717/peerj.1794#supplemental-information>.

REFERENCES

- Badaro MFS, Neves EG, Castro P, Johnsson R. 2012.** Description of a new genus of Cryptochiridae (Decapoda: Brachyura) associated with *Siderastrea* (Anthozoa):

- Scleractinia), with notes on feeding habits. *Scientia Marina* **76**:517–526
[DOI 10.3989/scimar.03538.02E](https://doi.org/10.3989/scimar.03538.02E).
- Bak RPM, Nieuwland G, Meesters EH. 2005.** Coral reef crisis in deep and shallow reefs: 30 years of constancy and change in reefs of Curacao and Bonaire. *Coral Reefs* **24**:475–479 [DOI 10.1007/s00338-005-0009-1](https://doi.org/10.1007/s00338-005-0009-1).
- Bongaerts P, Frade PR, Ogier JJ, Hay KB, van Bleijswijk J, Englebort N, Vermeij MJ, Bak RP, Visser PM, Hoegh-Guldberg O. 2013.** Sharing the slope: depth partitioning of agariciid corals and associated *Symbiodinium* across shallow and mesophotic habitats (2–60 m) on a Caribbean reef. *BMC Evolutionary Biology* **13**:205 [DOI 10.1186/1471-2148-13-205](https://doi.org/10.1186/1471-2148-13-205).
- Bongaerts P, Ridgway T, Sampayo EM, Hoegh-Guldberg O. 2010.** Assessing the “deep reef refugia” hypothesis: focus on Caribbean reefs. *Coral Reefs* **29**:309–327 [DOI 10.1007/s00338-009-0581-x](https://doi.org/10.1007/s00338-009-0581-x).
- Budd AF, Fukami H, Smith ND, Knowlton N. 2012.** Taxonomic classification of the reef coral family Mussidae (Cnidaria: Anthozoa: Scleractinia). *Zoological Journal of the Linnean Society* **166**:465–529 [DOI 10.1111/j.1096-3642.2012.00855.x](https://doi.org/10.1111/j.1096-3642.2012.00855.x).
- Cantera KJR, Orozco C, Londoño-Cruz E, Toro-Farmer G. 2003.** Abundance and distribution patterns of infaunal associates and macroborers of the branched coral (*Pocillopora damicornis*) in Gorgona Island (eastern tropical Pacific). *Bulletin of Marine Science* **72**:207–219.
- Carricart-Ganivet JP, Carrera-Parra LF, Quan-Young LI, Garca-Madrigal MS. 2004.** Ecological note on *Troglocarcinus corallicola* (Brachyura: Cryptochiridae) living in symbiosis with *Manicina areolata* (Cnidaria: Scleractinia) in the Mexican Caribbean. *Coral Reefs* **23**:215–217 [DOI 10.1007/s00338-004-0381-2](https://doi.org/10.1007/s00338-004-0381-2).
- Carvalho S, Cúrdia J, Pereira F, Guerra-García JM, Santos MN, Cunha MR. 2014.** Biodiversity patterns of epifaunal assemblages associated with the gorgonians *Eunicella gazella* and *Leptogorgia lusitanica* in response to host, space and time. *Journal of Sea Research* **85**:37–47 [DOI 10.1016/j.seares.2013.10.001](https://doi.org/10.1016/j.seares.2013.10.001).
- Castro P. 1976.** Brachyuran crabs symbiotic with scleractinian corals: a review of their biology. *Micronesica* **12**:99–110.
- Castro P. 2015.** Symbiotic Brachyura. In: Castro P, Davie P, Guinot D, Schram FR, von Vaupel Klein JC, eds. *Decapoda: Brachyura, Treatise Zoology—Anatomy, Taxonomy, Biology 9C-I*. Brill, Leiden and Boston, 543–581.
- Connell JH. 1978.** Diversity in tropical rain forests and coral reefs. *Science* **199**:1302–1310 [DOI 10.1126/science.199.4335.1302](https://doi.org/10.1126/science.199.4335.1302).
- Fukami H, Chen CA, Budd AF, Collins A, Wallace C, Chuang Y-Y, Chen C, Dai C-F, Iwao K, Sheppard C, Knowlton N. 2008.** Mitochondrial and nuclear genes suggest that stony corals are monophyletic but most families of stony corals are not (Order Scleractinia, Class Anthozoa, Phylum Cnidaria). *PLoS ONE* **3**:e3222 [DOI 10.1371/journal.pone.0003222](https://doi.org/10.1371/journal.pone.0003222).
- Gardner TA, Côté IM, Gill JA, Grant A, Watkinson AR. 2003.** Long-term region-wide declines in Caribbean corals. *Science* **301**:958–960 [DOI 10.1126/science.1086050](https://doi.org/10.1126/science.1086050).

- Gittenberger A, Hoeksema BW. 2013.** Habitat preferences of coral-associated wentletrap snails (Gastropoda: Epitoniidae). *Contributions to Zoology* **82**:1–25.
- Gray JS. 1997.** Marine biodiversity: patterns, threats and conservation needs. *Biodiversity and Conservation* **175**:153–175 DOI [10.1023/A:1018335901847](https://doi.org/10.1023/A:1018335901847).
- Hoeksema BW, van der Meij SET. 2013.** Gall crab city: an aggregation of endosymbiotic crabs inhabiting a colossal colony of *Pavona clavus*. *Coral Reefs* **32**:59–59 DOI [10.1007/s00338-012-0954-4](https://doi.org/10.1007/s00338-012-0954-4).
- Hoeksema BW, van der Meij SET, Franssen CHJM. 2012.** The mushroom coral as a habitat. *Journal of the Marine Biological Association of the United Kingdom* **92**:647–663 DOI [10.1017/S0025315411001445](https://doi.org/10.1017/S0025315411001445).
- Humann P, Deloach N. 2002.** *Reef coral identification: Florida, Caribbean, Bahamas*. Florida: New World Publications, 278 p.
- Johnsson R, Neves E, Franco GMO, Silveira FL Da. 2006.** The association of two gall crabs (Brachyura: Cryptochiridae) with the reef-building coral *Siderastrea stellata* Verrill, 1868. *Hydrobiologia* **559**:379–384 DOI [10.1007/s10750-005-9307-4](https://doi.org/10.1007/s10750-005-9307-4).
- Kramarsky-Winter E, Galil BS, Loya Y. 1995.** Biology and ecology of the cryptic cryptochirid crab *Fungicola fagei* and its free-living coral host *Fungia granulosa*. *Israel Journal of Zoology* **41**:94–95.
- Kropp RK. 1990.** Revision of the genera of gall crabs (Crustacea: Cryptochiridae) occurring in the Pacific Ocean. *Pacific Science* **44**:417–448.
- Kropp RK, Manning RB. 1987.** The Atlantic gall crabs, family Cryptochiridae (Crustacea: Decapoda: Brachyura). *Smithsonian Contributions to Zoology* **462**:1–21.
- Nagelkerken I. 2006.** Relationship between anthropogenic impacts and bleaching-associated tissue mortality of corals in Curaçao (Netherlands Antilles). *Revista de Biología Tropical* **54**:31–44.
- Nagelkerken I, Vermonden K, Moraes OCC, Debrot AO, Nagelkerken WP. 2005.** Changes in coral reef communities and an associated reef fish species, *Cephalopholis cruentata* (Lacépede), after 30 years on Curacao (Netherlands Antilles). *Hydrobiologia* **549**:145–154 DOI [10.1007/s10750-005-5448-8](https://doi.org/10.1007/s10750-005-5448-8).
- Nogueira MM, Menezes NM, Johnsson R, Neves E. 2014.** The adverse effects of cryptochirid crabs (Decapoda: Brachyura) on *Siderastrea stellata* Verrill, 1868 (Anthozoa: Scleractinia): causes and consequences of cavity establishment. *Cahiers de Biologie Marine* **55**:155–162.
- Oigman-Pszczol SS, Creed JC. 2006.** Distribution and abundance of fauna on living tissues of two Brazilian hermatypic corals (*Mussismilia hispida* (Verrill 1902) and *Siderastrea stellata* Verrill, 1868). *Hydrobiologia* **563**:143–154 DOI [10.1007/s10750-005-0002-2](https://doi.org/10.1007/s10750-005-0002-2).
- Plaisance L, Caley MJ, Brainard RE, Knowlton N. 2011.** The diversity of coral reefs: what are we missing? *PLoS ONE* **6**:e2506 DOI [10.1371/journal.pone.0025026](https://doi.org/10.1371/journal.pone.0025026).
- Preston NP, Doherty PJ. 1990.** Cross-shelf patterns in the community structure of coral-dwelling Crustacea in the central region of the Great Barrier Reef. I. Agile shrimps. *Marine Ecology Progress Series* **66**:47–61 DOI [10.3354/meps066047](https://doi.org/10.3354/meps066047).

- Preston NP, Doherty PJ. 1994.** Cross-shelf patterns in the community structure of coral-dwelling Crustacea in the central region of the Great Barrier Reef. II. Cryptofauna. *Marine Ecology Progress Series* **104**:27–38 DOI [10.3354/meps104027](https://doi.org/10.3354/meps104027).
- Reaka-Kudla ML. 1997.** The global biodiversity of coral reefs: a comparison with rain forests. In: Reaka-Kudla ML, Wilson DE, Wilson EO, eds. *Biodiversity II: understanding and protecting our biological resources*. Washington, D.C.: Joseph Henry/National Academy Press, 83–108.
- Schiemer L, Niedermüller S, Herler J. 2009.** The influence of colony size and coral health on the occupation of coral-associated gobies (Pisces: Gobiidae). *Coral Reefs* **28**:137–142 DOI [10.1007/s00338-008-0420-5](https://doi.org/10.1007/s00338-008-0420-5).
- Sebens KP. 1994.** Biodiversity of coral reefs: what are we losing and why? *American Zoologist* **34**:115–133 DOI [10.1093/icb/34.1.115](https://doi.org/10.1093/icb/34.1.115).
- Serène R. 1972.** On the brachyuran fauna of the Indo-Pacific coral reefs. In: *Proc Symp Corals Coral Reefs, Mar biol Ass India*. 419–424.
- Shaw J, Hopkins T. 1977.** The distribution of the family Hapalocarcinidae (Decapoda, Brachyura) on the Florida middle ground, with a description of *Pseudocryptochirus hypostegus* new species. In: *Proceedings, third int coral reefs symp*, 177–183.
- Simon-Blecher N, Achituv Y. 1997.** Relationship between the coral pit crab *Cryptochirus coralliodytes* Heller and its host coral. *Journal of Experimental Marine Biology and Ecology* **215**:93–102 DOI [10.1016/S0022-0981\(97\)00002-6](https://doi.org/10.1016/S0022-0981(97)00002-6).
- Simon-Blecher N, Chemedanov A, Eden N, Achituv Y. 1999.** Pit structure and trophic relationship of the coral pit crab *Cryptochirus coralliodytes*. *Marine Biology* **134**:711–717 DOI [10.1007/s002270050587](https://doi.org/10.1007/s002270050587).
- Stella JS, Pratchett MS, Hutchings PA, Jones GP. 2011.** Coral-associated invertebrates: diversity, ecological importance and vulnerability to disturbance. *Oceanography and Marine Biology: An Annual Review* **49**:43–104.
- Utinomi H. 1944.** Studies on the animals inhabiting reef corals III. A revision of the family Hapalocarcinidae (Brachyura), with some remarks on their morphological peculiarities. *Palao Tropical Biological Station Studies* **2**:687–731.
- van der Meij SET. 2012.** Host preferences, colour patterns and distribution records of *Pseudocryptochirus viridis* Hiro, 1938 (Decapoda, Cryptochiridae). *Crustaceana* **85**:769–777 DOI [10.1163/156854012X650223](https://doi.org/10.1163/156854012X650223).
- van der Meij SET. 2014.** Host species, range extensions, and an observation of the mating system of Atlantic shallow-water gall crabs (Decapoda: Cryptochiridae). *Bulletin of Marine Science* **90**:1001–1010 DOI [10.5343/bms.2014.1017](https://doi.org/10.5343/bms.2014.1017).
- van der Meij SET. 2015.** Host relations and DNA reveal a cryptic gall crab species (Crustacea: Decapoda: Cryptochiridae) associated with mushroom corals (Scleractinia: Fungiidae). *Contributions to Zoology* **84**:39–57.
- van der Meij SET, Hoeksema BW. 2013.** Distribution of gall crabs inhabiting mushroom corals on Semporna reefs, Malaysia. *Marine Biodiversity* **43**:53–59 DOI [10.1007/s12526-012-0135-2](https://doi.org/10.1007/s12526-012-0135-2).
- van der Meij SET, Nieman AM.** Old and recent DNA unweave the phylogenetic position of the eastern Atlantic gall crab *Detocarcinus balssi* (Monod, 1956) (Decapoda:

Cryptochiridae). *Journal of Zoological Systematics and Evolutionary Research* In Press DOI 10.1111/jzs.12130.

- van der Meij SET, Reijnen BT. 2014.** The curious case of *Neotroglocarcinus dawydoffi* (Decapoda, Cryptochiridae): unforeseen biogeographic patterns resulting from isolation. *Systematics and Biodiversity* 12:503–512 DOI 10.1080/14772000.2014.946979.
- van der Meij SET, van Tienderen KM, Hoeksema BW. 2015.** A mesophotic record of the gall crab *Opecarcinus hypostegus* from a Curaçaoan reef Sancia. *Bulletin of Marine Science* 91:205–206 DOI 10.5343/bms.2014.1072.
- Vermeij MJA, Bakker J, van der Hal N, Bak RPM. 2011.** Juvenile coral abundance has decreased by more than 50% in only three decades on a small Caribbean Island. *Diversity* 3:296–307 DOI 10.3390/d3030296.
- Verrill A. 1908.** Brachyura and Anomura: their distribution, variation, and habits: decapod Crustacea of Bermuda. *Transactions of the Connecticut Academy of Arts and Sciences* I:299–474.
- Weil E, Knowlton N. 1994.** A multi-character analysis of the Caribbean coral *Montastraea annularis* (Ellis and Solander, 1786) and its two sibling species, *M. faveolata* (Ellis and Solander, 1786) and *M. franksi* (Gregory, 1895). *Bulletin of Marine Science* 55:151–175.