

Ocean Sci., 12, 925–935, 2016
www.ocean-sci.net/12/925/2016/
doi:10.5194/os-12-925-2016
© Author(s) 2016. CC Attribution 3.0 License.



Observed and simulated full-depth ocean heat-content changes for 1970–2005

Lijing Cheng¹, Kevin E. Trenberth², Matthew D. Palmer³, Jiang Zhu¹, and John P. Abraham⁴

¹International Center for Climate and Environment Sciences, Institute of Atmospheric Physics, Chinese Academy of Sciences, 100029, Beijing, China

²National Center for Atmospheric Research, Boulder, CO, USA

³Met Office Hadley Centre, FitzRoy Road, Exeter, EX1 3PB, UK

⁴School of Engineering, University of St. Thomas, St. Paul, MN, USA

Correspondence to: John Abraham (jpabraham@stthomas.edu) and Lijing Cheng (chenglij@mail.iap.ac.cn)

Received: 4 April 2016 – Published in Ocean Sci. Discuss.: 8 April 2016

Revised: 7 June 2016 – Accepted: 9 July 2016 – Published: 26 July 2016

Abstract. Greenhouse-gas emissions have created a planetary energy imbalance that is primarily manifested by increasing ocean heat content (OHC). Updated observational estimates of full-depth OHC change since 1970 are presented that account for recent advancements in reducing observation errors and biases. The full-depth OHC has increased by $0.74 [0.68, 0.80] \times 10^{22} \text{ J yr}^{-1}$ (0.46 Wm^{-2}) and $1.22 [1.16–1.29] \times 10^{22} \text{ J yr}^{-1}$ (0.75 Wm^{-2}) for 1970–2005 and 1992–2005, respectively, with a 5 to 95 % confidence interval of the median. The CMIP5 models show large spread in OHC changes, suggesting that some models are not state-of-the-art and require further improvements. However, the ensemble median has excellent agreement with our observational estimate: $0.68 [0.54–0.82] \times 10^{22} \text{ J yr}^{-1}$ (0.42 Wm^{-2}) from 1970 to 2005 and $1.25 [1.10–1.41] \times 10^{22} \text{ J yr}^{-1}$ (0.77 Wm^{-2}) from 1992 to 2005. These results increase confidence in both the observational and model estimates to quantify and study changes in Earth's energy imbalance over the historical period. We suggest that OHC be a fundamental metric for climate model validation and evaluation, especially for forced changes (decadal timescales).

mann et al., 2016) via the associated net energy imbalance at Earth's top-of-atmosphere (TOA). It is estimated that more than 90 % of the excess heat is stored in the ocean and is manifested by ocean warming (Loeb et al., 2012; Balmaseda et al., 2013; Rhein et al., 2013; Trenberth et al., 2014), i.e., an increase in global ocean heat content (OHC; Lyman et al., 2010; Levitus et al., 2012; Abraham et al., 2013). Due to the ocean's dominant role in the global energy storage changes, the rate of OHC change provides a strong constraint on Earth's energy imbalance on interannual and longer timescales (Palmer and McNeill, 2014; Trenberth, 2015). Numerous efforts have been made to detect the historical OHC change (for example, Levitus et al., 2005; Gouretski and Koltermann, 2007; Smith and Murphy, 2007; Domingues et al., 2008; Palmer and Haines, 2009; Ishii and Kimoto, 2009; Lyman et al., 2010; Levitus et al., 2012; Balmaseda et al., 2013; Cheng et al., 2015a) and attribute causes to its variation (Palmer et al., 2009; Gleckler et al., 2012). However, large uncertainties exist in OHC estimates (Abraham et al., 2013; Balmaseda et al., 2013; Rhein et al., 2013), which can confound our understanding of the changes in Earth's energy imbalance since the 1970s.

A major source of error in the historical in situ temperature data that underpin OHC estimates are time-varying systematic biases in expendable bathythermograph (XBT) temperature measurements (Gouretski and Koltermann, 2007; Lyman et al., 2010; Abraham et al., 2013). Numerous correction schemes have been proposed to remove the time-varying XBT biases (Cheng et al., 2015b), but these schemes vary

1 Introduction

Since the beginning of the industrial revolution, increased emissions of long-lived greenhouse gases such as carbon dioxide have resulted in an accumulation of thermal energy in the climate system (Trenberth et al., 2014; von Schuck-

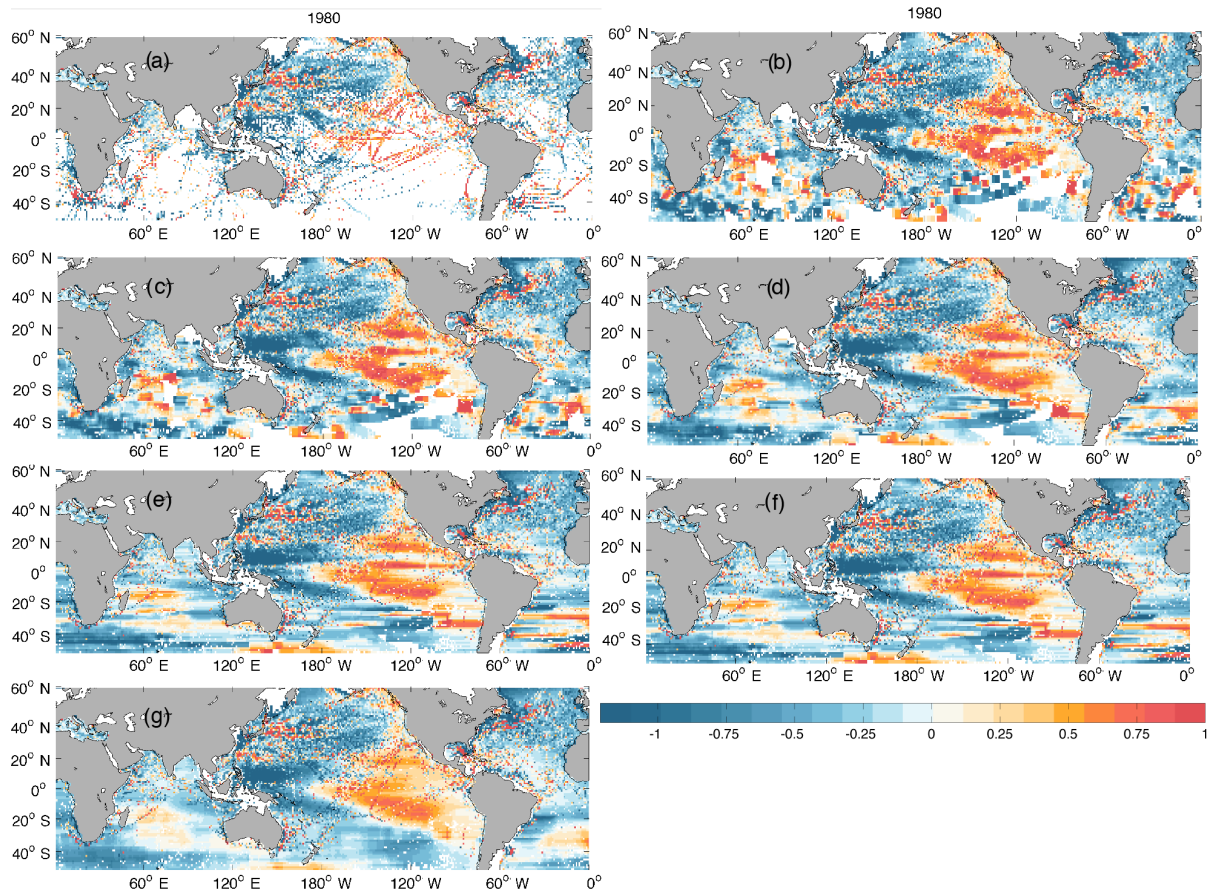


Figure 1. Flexible-grid method. (a) shows the geographical distribution of 700 m OHC in 1980 on each 1° by 1° grid, showing good data coverage in the Northern Hemisphere and sparse data in the Southern Hemisphere. To fill these data gaps by using the flexible-grid method, OHC on each grid in the poorly sampled region (defined as the Argo-Ship Area in CZ14) is calculated by averaging OHC on a large latitude–longitude grid with sizes of 5° by 5° , 5° by 10° , 5° by 20° , 1° by 40° , 8° by 40° , and 10° by 40° separately. The resultant OHC distribution is shown from (b) to (g).

in their formulation and performance. Hence, the XBT community met in 2014 and made a series of recommendations on the factors that should be accounted for when designing and implementing an XBT bias-correction scheme (Cheng et al., 2015b). Only one bias-correction scheme (Cheng et al., 2014) meets all of these recommendations, and has been shown to correct the overall bias to less than 0.02°C (for the 0–700 m layer, less than 10 % of the total 0–700 m temperature change since 1970) and also reduce the spatio-temporal variation of bias.

Prior to 2004, observations of the upper ocean were predominantly confined to the Northern Hemisphere and concentrated along major shipping routes; the Southern Hemisphere is particularly poorly observed. In this century, the advent of the Argo array of autonomous profiling floats (Roemmich et al., 2015; von Schuckmann et al., 2014) has significantly increased ocean sampling to achieve near-global coverage for the first time over the upper 1800 m since about 2005.

The lack of historical data coverage requires a gap-filling (or mapping) strategy to infill the data gaps in order to estimate the global integral of OHC. A pioneering study showed that an improved strategy for gap-filling methods and corrections for XBT biases improved the consistency between models and observations of upper 700 m OHC (Domingues et al., 2008). Owing to sparse observations in the Southern Hemisphere, Durack et al. (2014) explored this region as a primary source of underestimation of OHC trends using climate models from the Coupled Model Intercomparison Project Phase 3/5 (CMIP 3/5; Meehl et al., 2007; Taylor et al., 2012). Cheng and Zhu (2014) examined the observation system evolution in this century, identifying a spurious signal from 2001 to 2003 in global OHC estimates due to inadequate sampling of the Southern Hemisphere prior to Argo. Accordingly, these studies imply that many past estimates likely underestimate the long-term trend.

The aim of this study is to use these improved XBT bias corrections and gap-filling methods designed to minimize

the impact of historical sampling changes and to confront CMIP5 models with the state-of-the-art observational estimates of OHC change. We note that the work presented here is broadly similar to the recent study of Gleckler et al. (2016) and provides an important independent verification of some of their key findings. However, the present study also makes use of a larger number of CMIP5 models (24 compared to 15) and observation-based estimates of the 0–700 m ocean heat content changes (8 compared to 3), including improved XBT bias corrections and new mapping approaches. We are therefore able to more fully characterize the uncertainties associated with CMIP5 models and place our new observation-based estimates of OHC in the context of several previous estimates (including those of Gleckler et al.). The paper is arranged as follows. In Sect. 2 the data and methods are introduced. The various observation-based OHC estimates used are discussed in Sect. 3.1; CMIP5 model simulations are presented in Sect. 3.2. We summarize our findings in Sect. 4.

2 Data and methods

The new observation-based estimates of OHC presented here use the XBT bias-correction scheme from Cheng et al. (2014) applied to the most recent version of the World Ocean Database (WOD2013; Boyer et al., 2013). MBT bias is corrected using the method provided in Ishii and Kimoto (2009). Because the choice of reference climatology to compute anomalies can lead to errors due to the sparseness and inhomogeneity of the historical ocean sampling (Lyman and Johnson, 2014; Cheng and Zhu, 2015), it is preferable to use the climatology that is constructed based on data with near-global data coverage (Cheng and Zhu, 2015), i.e., during the recent years in the Argo period. In this study, we use a climatology constructed for the period 2008–2012, similar to Cheng and Zhu (2014) and Cheng et al. (2015a).

We apply two approaches to mapping the OHC data. The first (Cheng and Zhu, 2014; hereafter termed the CZ14 method) calculated annual mean OHC in data-rich areas (defined as the Ship Area) and a linear OHC trend in data-sparse regions (defined as the Argo-Ship Area). Then the two estimates are summed to get the global OHC. The second approach is an extension to CZ14 that uses flexible grid sizes to retain greater spatial information while ensuring an adequate number of observations in each grid box. OHC on each 1° by 1° grid in poorly sampled regions (Argo-Ship Area defined in CZ14) is calculated by averaging OHCs over a large latitude–longitude grid with sizes of 5° by 5° , 5° by 10° , 5° by 20° , 2° by 40° , 8° by 40° , and 10° by 40° separately to ensure that all regions have data coverage (Fig. 1). The gridded averaged anomalies are then integrated to get global OHC. This method (“flexible-grid” method hereafter) maintains the observed OHC in data-rich regions without smoothing and provides a smooth OHC field in data-sparse regions. This is ap-

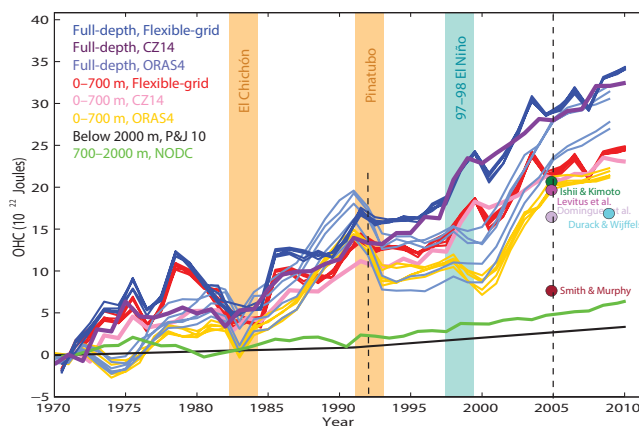


Figure 2. Observational ocean heat content from 1970 to 2010. The 0–700 m OHC is shown in red (flexible-grid method), pink (CZ14 method), and yellow (ORAS4). Five adjusted OHCs presented in Durack et al. (2014) are shown as dots, which are the OHC changes per 35 years. The 700–2000 m OHC is sourced from NODC in green, and abyssal (2000 m–bottom) OHC is from Purkey and Johnson (2010) and shown in black (the warming rate within 1970–1991 is scaled to 3 times the linear trend in Purkey and Johnson, 2010). Full-depth OHC time series are also presented in blue (flexible-grid method), dark purple (CZ14 method), and light blue (ORAS4). All of the time series are referred to a baseline OHC within the 3-year period: 1969–1971. The vertical colored bars are 2-year intervals, starting when the event (volcano or El Niño) began.

propriate for the Southern Hemisphere, where there is more homogeneity, less land, and no boundary currents.

In addition to our new observation-based OHC estimates, we also present two recent sets of estimates that make use of dynamical models. The first uses climate model simulations (Durack et al., 2014) to adjust five of the existing upper 700 m OHC estimates (Domingues et al., 2008; Durack and Wijffels, 2010; Ishii and Kimoto, 2009; Levitus et al., 2012; Smith and Murphy, 2007), which may have underestimated trends due to the very limited data coverage in the Southern Hemisphere. In addition to the Durack et al. (2014) global OHC adjustments that are based on comparing hemispheric ratios of heat uptake in the CMIP5 models, it is desirable to also use other estimates from independent studies. The second is the ORAS4 data set, which is an ocean reanalysis product (Balmaseda et al., 2013). Ocean reanalyses have the advantage of synthesizing a large number of different observations into a dynamically consistent estimate of the historical ocean state and can potentially provide greater physical insight into the mechanisms of OHC change (Balmaseda et al., 2013; Palmer et al., 2015; Xue et al., 2012). The five ensemble members in ORAS4 approximately represent the uncertainties in the wind forcing, observation coverage, and the deep ocean. OHCs considered within layers of 0–700, 700–2000, and 2000 m–bottom are all used in this study.

Table 1. List of CMIP5 models and group names.

Modeling center (or group)	Institute ID	Model name
Commonwealth Scientific and Industrial Research Organization (CSIRO) and Bureau of Meteorology (BOM), Australia	CSIRO-BOM	ACCESS1.0
Beijing Climate Center, China Meteorological Administration	BCC	BCC-CSM1.1 BCC-CSM1.1(m)
Canadian Centre for Climate Modelling and Analysis	CCCMA	CanESM2
National Center for Atmospheric Research	NCAR	CCSM4
Community Earth System Model Contributors	NSF-DOE-NCAR	CESM1(FASTCHEM)
Commonwealth Scientific and Industrial Research Organization in collaboration with Queensland Climate Change Centre of Excellence	CSIRO-QCCCE	CSIRO-Mk3.6.0
NOAA Geophysical Fluid Dynamics Laboratory	NOAA GFDL	GFDL-CM3 GFDL-ESM2G GFDL-ESM2M
NASA Goddard Institute for Space Studies	NASA GISS	GISS-E2-R
Met Office Hadley Centre (additional HadGEM2-ES realizations contributed by Instituto Nacional de Pesquisas Espaciais)	MOHC (additional realizations by INPE)	HadGEM2-CC HadGEM2-ES
Institut Pierre-Simon Laplace	IPSL	IPSL-CM5A-LR IPSL-CM5A-MR IPSL-CM5B-LR
Japan Agency for Marine-Earth Science and Technology, Atmosphere and Ocean Research Institute (The University of Tokyo), and National Institute for Environmental Studies	MIROC	MIROC-ESM
Atmosphere and Ocean Research Institute (The University of Tokyo), National Institute for Environmental Studies, and Japan Agency for Marine-Earth Science and Technology	MIROC	MIROC5
Max-Planck-Institut für Meteorologie (Max Planck Institute for Meteorology)	MPI-M	MPI-ESM-MR MPI-ESM-LR MPI-ESM-P
Meteorological Research Institute	MRI	MRI-CGCM3
Norwegian Climate Centre	NCC	NorESM1-M NorESM1-ME

Combining our new OHC estimates with existing estimates provides an ensemble of observation-based estimates of historical upper 0–700 m OHC changes, and the spread is a simple measure of the observational uncertainty. Differences across the ensemble arise not only from mapping methods, but also from the choice of climatology, input data quality control procedures, and XBT correction scheme (Palmer et al., 2010).

To arrive at estimates of full-depth OHC change, we adapted and adjusted the Levitus et al. (2012) estimate for the 700–2000 m layer and, for the deeper ocean for the period 1990–2010, we use information from Purkey and Johnson (2010), which was also used in the IPCC-AR5 report (Rhein et al., 2013). Prior to 1990, there is a larger uncertainty regarding the rate of deep-ocean warming. Because the upper 700–2000 m oceans show an approximate tripling of the heating rate from 1992 to 2005 compared to from

1970 to 1991 (as shown in Fig. 2, green curve), we assume a proportionate increase in heat uptake in the deep-ocean (2000 m–bottom). An assumption has to be made here because there are not sufficient observations below 2000 m. The upper oceans are mostly controlled by the wind, but the deep oceans (i.e., 700 m–bottom) are mainly controlled by the meridional overturning circulation. So the OHC changes at 700–2000 m and 2000–bottom may share some similarities. For uncertainty calculations, we use a lower bound of no deep-ocean warming prior to 1992 and an upper bound of an unchanging linear trend from 1970 to 2005, as assumed in Church et al. (2011). Because this is an important assumption, it is valuable to assess the uncertainties involved. We show that the difference of this lower and upper bound of the 700 m–bottom OHC change is equal to $\sim 13\%$ ($\sim 10\%$) of the full-depth OHC change during 1970–1991 (1970–2005), which indicates the maximum error induced

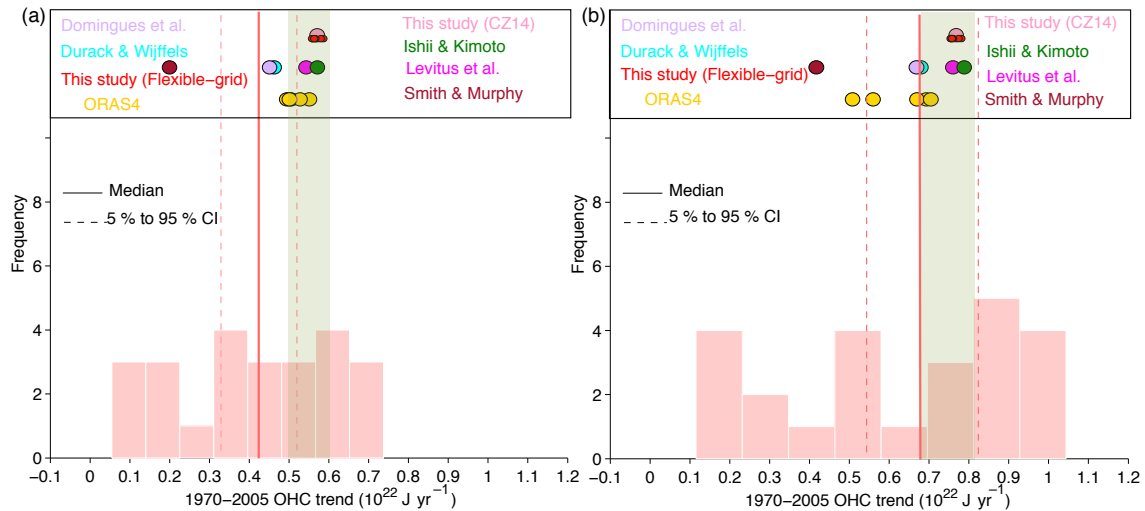


Figure 3. OHC trends during the 1970–2005 period in observations and CMIP5 models. (a) 0–700 m. (b) Full depth. For models, the histograms are the distribution of CMIP5 results, and the median of the CMIP5 multimodel results is shown in solid line, with the 5–95 % confidence interval in dashed lines. For observations, we present the linear trends by different studies: this study (both CZ14 and the flexible-grid method), five estimates in Durack et al. (2014) after adjustment, and five ensembles of ORAS4 reanalysis. The 5–95 % confidence intervals for observations are shaded in light green. A quadratic fit to the entire pre-industrial control run was used to correct the CMIP5 time series for model drift.

by this assumption. The ORAS4 data also provide estimates of OHC changes deeper than 700 m. We estimate the uncertainty for the OHC changes below 700 m by computing the standard error from the ensemble members of Levitus et al. (2012), Purkey and Johnson (2010), and ORAS4 ensembles, and presenting the 5–95 % confidence interval.

We compare our observation-based OHC ensemble with 24 CMIP5 model simulations (Table 1) of historical OHC changes. Climate models suffer from so-called “drift” (Sen Gupta et al., 2013; Hobbs et al., 2015), i.e., spurious long-term trends arising due to the slow model adjustment to the initial conditions and/or imperfect representation of the energy budget. This drift can bias the long-term representation of the ocean temperature, especially in deeper layers. Because there is no general consensus on how to correct for climate drift in models, we applied two different drift correction strategies by using available pre-industrial control (“pi-Control”) runs of 24 CMIP5 models. We applied both a linear and quadratic fit to the OHC time series of pi-control runs for OHC0–700, 700–2000, and 2000–6000 m. The resulting regression function is removed from the historical simulations for each model. The two methods show nearly identical results (Tables 2 and 3) and we present the results for quadratic drift correction as the basis of our discussions.

To quantify the OHC changes for a given time period, we fit a linear trend. An alternative method for calculating the OHC difference between the two ends of a time series shows consistent results (compare Table 2 with Table 3). For both observation-based OHC and CMIP5-OHC results, we calculate the median of the ensemble to reduce the impact of out-

liers, together with the 5 to 95 % confidence interval of the median assuming that the values were independently and randomly sampled from a population distributed according to a Gaussian distribution. Therefore, the 5–95 % confidence interval is \pm standard error \times 2.10. The Student’s *t* test is used to examine the significance of the difference between observations and CMIP5 models.

3 Results

3.1 Observation-based full-depth OHC estimates

Figure 2 presents the observation-based 0–700 m OHC estimates by using the methods listed in the previous section, after taking the Southern Hemisphere sampling bias into account. The updated 0–700 m OHC estimate based on the CZ14 method indicates a total upper ocean warming of approximately $21.0 \times 10^{22} \text{ J}$, equal to a linear trend of $0.58 \times 10^{22} \text{ J yr}^{-1}$ (or 0.35 W m^{-2} , averaged over the global surface area) from 1970 to 2005. The six individual flexible-grid method estimates (based on six choices of grid size; Fig. 2) span a range of 0.52 – $0.58 \times 10^{22} \text{ J yr}^{-1}$ during the 1970–2005 period, consistent with the CZ14 estimate. In addition, according to Durack et al. (2014), the change in global 0–700 m OHC over the period 1970–2005 increased by 0.43 – $0.56 \times 10^{22} \text{ J yr}^{-1}$ (Fig. 2). One estimate (Smith and Murphy, 2007), which shows much smaller values than the others, is discounted, but including the Smith and Murphy (2007) value does not impact our results, since we use the median

Table 2. Summary of ocean heat content change. Comparison of CMIP5 models and observations. The medians with the 5–95 % confidence interval are presented.

Time period	Depth	CMIP5 linear drift correction ($\times 10^{22}$ J yr ⁻¹)	CMIP5 quadratic drift correction ($\times 10^{22}$ J yr ⁻¹)	Observations ($\times 10^{22}$ J yr ⁻¹)
1970–2005	0–700 m	0.42 [0.32, 0.51]	0.42 [0.32, 0.51]	0.55 [0.50, 0.60]
	full depth	0.69 [0.56, 0.82]	0.68 [0.54, 0.82]	0.74 [0.68, 0.80]
1992–2005	0–700 m	0.89 [0.77, 1.02]	0.89 [0.77, 1.02]	0.85 [0.79, 0.92]
	full depth	1.26 [1.11, 1.42]	1.25 [1.10, 1.41]	1.22 [1.16, 1.29]
1970–1991	0–700 m	0.39 [0.30, 0.47]	0.40 [0.31, 0.48]	0.51 [0.46, 0.56]
	full depth	0.57 [0.44, 0.69]	0.56 [0.43, 0.68]	0.61 [0.53, 0.69]

Table 3. Summary of total ocean heat content change within 1970–2005 and 1992–2005 by using an alternative method to assess the long-term OHC change. Here the total OHC changes based on observations are calculated by the difference of OHC with 2004–2006 and OHC within 1969–1971 (1990–1992) for the 1970–2005 (1992–2005) period to reduce the interannual temporal variability. This is an alternative method to assess the OHC change in addition to the linear trend in Table 2.

Time period	Depth	CMIP5 linear drift correction ($\times 10^{22}$ J)	CMIP5 quadratic drift correction ($\times 10^{22}$ J)	Observations ($\times 10^{22}$ J)
1970–2005	0–700 m	16.9 [13.0, 20.0]	16.7 [12.8, 19.9]	18.5 [16.5, 20.5]
	full depth	26.6 [22.0, 30.9]	26.6 [22.2, 31.0]	28.3 [25.5, 32.3]
1992–2005	0–700 m	10.7 [9.0, 12.4]	10.8 [9.1, 12.5]	9.0 [8.2, 9.8]
	full depth	15.0 [13.0, 17.1]	14.9 [12.9, 17.0]	13.5 [12.3–14.7]

rather than the mean. ORAS4 reanalysis shows a range of $0.49\text{--}0.53 \times 10^{22}$ J yr⁻¹ for the 0–700 m OHC.

The collection of the different observational OHC estimates discussed above (16 individual estimates) provides current best estimates of OHC, along with an estimate of the uncertainty associated with the analytical methodology (Fig. 3a). Although all OHC estimates are based on essentially the same temperature profile database, they use four different methods, and hence their differences give an indication of the uncertainty. The total OHC change of the upper 700 m layer has increased by 0.55×10^{22} J yr⁻¹ (0.34 W m^{-2}) from 1970 to 2005, which is the median among all of the ensemble members, with a 5–95 % confidence interval of $0.50\text{--}0.60 \times 10^{22}$ J yr⁻¹.

On the other hand, it is worthwhile noting that the comparison of CZ14, flexible-grid method, and ORAS4 results shows inconsistencies in OHC changes on interannual timescales (Fig. 2), indicating that the errors in OHC estimates are still larger than the interannual variability, as shown in Abraham et al. (2013). However, all of the estimates show the OHC decreases after the major volcano eruptions: El Chichón in March–April 1982 and Pinatubo in June 1991 (Fig. 2). The OHC change after the two volcano eruptions is approximately assessed by subtracting the OHC 1 year before the eruption from the OHC in the second year after eruption. It shows a 0–700 m OHC decrease of $\sim -2.67 [-3.28, -2.06] \times 10^{22}$ J after El Chichón and

$\sim -2.72 [-3.97, -1.47] \times 10^{22}$ J after Pinatubo, indicating the strong ocean cooling. The negative radiative forcing to the ocean (and climate system) due to the volcano eruption is probably the major reason for this decrease (Church et al., 2005; Domingues et al., 2008; Balmaseda et al. 2013), but our observational analyses can not exclude the possibility that the unforced ocean variability (such as ENSO, Trenberth and Fasullo, 2012) and the insufficiency of data coverage (which could induce spurious interannual OHC change) are fully or partly responsible for the values calculated above, which requires more careful model-based studies in the future. Moreover, it is also suggested that volcanic eruptions can trigger an El Niño-like response in the ocean, which is another possible explanation (Mann et al., 2005).

There is also an indication of substantial heat discharge from the upper 700 m ocean following the extreme 1997–1998 El Niño event (Balmaseda et al., 2013; Roemmich and Gilson, 2011), with the CZ14 estimate showing a lesser response than the other estimates partly due to their assumption of a linear long-term change in the data-sparse region. This 0–700 m OHC decrease is $\sim -2.73 [-3.27, -2.20] \times 10^{22}$ J after the 1997–1998 El Niño averaging over all the products. The decrease is calculated by the difference in OHC between 2000 and 1998 for ORAS4 and between 2000 and 1999 for CZ14 and the flexible-grid method, since the latter products appear to be a delayed response. The differences among the data sets indicate the uncertainties of both gap-filling meth-

ods and the processes of OHC redistribution during ENSO represented by re-analyses (ORAS4) in the vertical in the Pacific Ocean and into the other ocean basins via atmosphere teleconnections (Mayer et al., 2013).

For deeper ocean layers, we adopt the 700–2000 m ocean heat content estimate from 1970 to 2005 in Levitus et al. (2012), where all of the historical in situ data are objectively analyzed. According to Levitus et al. (2012), the 700–2000 m ocean warmed by 0.12×10^{22} (0.17×10^{22}) J yr^{-1} or 0.075 (0.106) Wm^{-2} over the global surface since 1970 (1992). For the abyssal (2000 m–bottom) OHC changes, according to the strategies provided in the Methods section, we estimate a deep-ocean warming of 0.03×10^{22} (0 – 0.11×10^{22}) J yr^{-1} or 0.02 (0 – 0.07) Wm^{-2} during the 1970–1991 period and 0.11×10^{22} J yr^{-1} (0.077 Wm^{-2}) during 1992–2005. According to the two estimates at two layers, the ocean warming rate deeper than 700 m is 0.15×10^{22} J yr^{-1} (0.090 Wm^{-2}) during 1970–2005. However, as we discussed above, the traditional method from Levitus et al. (2012) is likely to underestimate the long-term trend, and this is also the case for the 700–2000 m estimate of OHC change. Hence it is also valuable to use ORAS4, which provides alternative estimates of 700–2000 m/2000 m–bottom OHC changes and also provides an assessment of the uncertainty. It is shown from the recent Ocean Reanalyses Intercomparison Project (Palmer et al., 2015) that there remain large biases in the deeper ocean, because there are limited 700 m (historical) data available, and hence it is a challenge for assimilation to deliver information to the model in those layers. ORAS4 shows the deeper 700 m–bottom ocean warming of 0.09 – 0.24×10^{22} J yr^{-1} (0.056 – 0.150 Wm^{-2}) since 1970, indicating large uncertainties generally consistent with the previous assessments based on Levitus et al. (2012) and Purkey and Johnson (2010).

By summing OHCs for the different layers 0–700, 700–2000, and 2000 m–bottom, the observation-based full-depth OHCs are obtained. All of these results (Fig. 3b) indicate a range of full-depth ocean warming of 0.50 – 0.79×10^{22} J yr^{-1} (0.31 – 0.50 Wm^{-2}) over the 36-year period (1970–2005, again calculated by linear trend). The median of the different estimates is 0.74 [0.68, 0.80] $\times 10^{22}$ J yr^{-1} (1.22 [1.16 – 1.29] $\times 10^{22}$ J yr^{-1}) since 1970 (since 1992), with the values in brackets representing the 5 and 95 % confidence intervals of the median. This is equivalent to a global energy imbalance of 0.46 [0.42, 0.50] Wm^{-2} (0.75 [0.69, 0.81] Wm^{-2}) averaged over Earth's surface area since 1970 (1992). Furthermore, after the two major volcano eruptions, the total OHC decrease is ~ -2.42 [-3.28 , -1.56] $\times 10^{22}$ J for El Chichón and ~ -3.19 [-4.92 , -1.67] $\times 10^{22}$ J for Pinatubo. Following the major 1997–1998 El Niño event, the total OHC decreases by ~ -1.85 [-2.62 , -1.10] $\times 10^{22}$ J. This indicates a substantial rearrangement of heat from 0 to 700 m to the deeper ocean, since most ensemble members show smaller full-depth heat loss than for the 0–700 m layer.

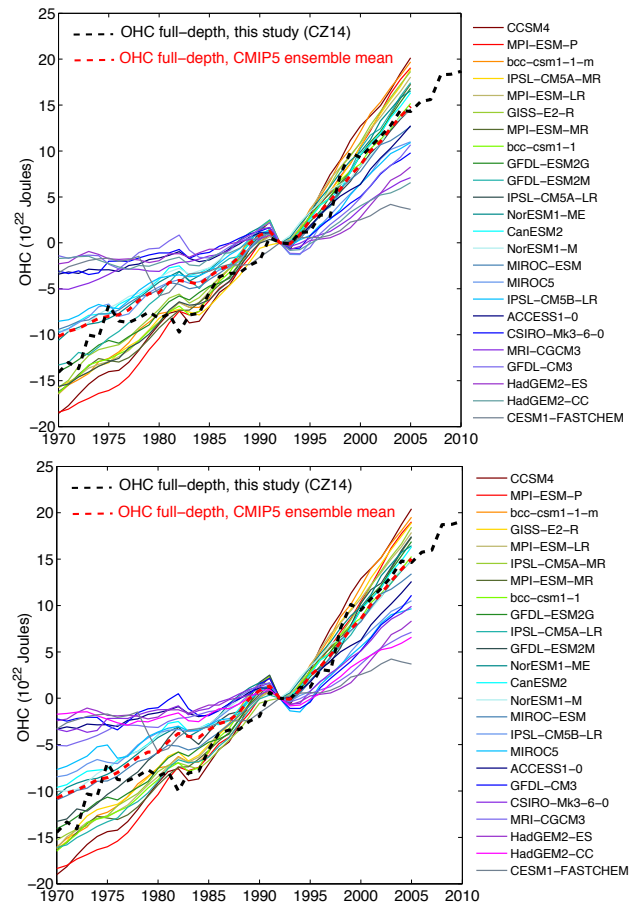


Figure 4. Full-depth OHC by individual CMIP5 models and observations. The observational OHC time series (black dashed) uses the CZ14 method (0–700 m), Levitus et al. (2012) (700–2000 m), and Purkey and Johnson (2010) (2000 m–bottom). The multimodel ensemble median is shown in dashed curve. A quadratic fit to the entire pre-industrial control run was used to correct the CMIP5 time series for model drift in the upper panel, and the results for the linear fit are shown at the bottom.

3.2 Climate model assessments

It is important to quantify the agreement of models, such as those in CMIP5 (Taylor et al., 2012; Durack et al., 2014; Gleckler et al., 2016), with observations, both to validate the models and also to reconcile the observations with expectations based on radiative forcing estimates. Comparisons are made (Fig. 3a) between the updated OHC observations and a 24-member climate model ensemble from 1970 to 2005, which is the limit for reasonable observational coverage (Lyman and Johnson, 2014) and is also restricted to the end time of the CMIP5 model runs for historical simulations (2005). Because the Durack et al. (2014) global OHC adjustments are partly based on heat uptake in the CMIP5 models, they should not be used to then evaluate the models. When removing Durack et al. (2014) estimates, the median change

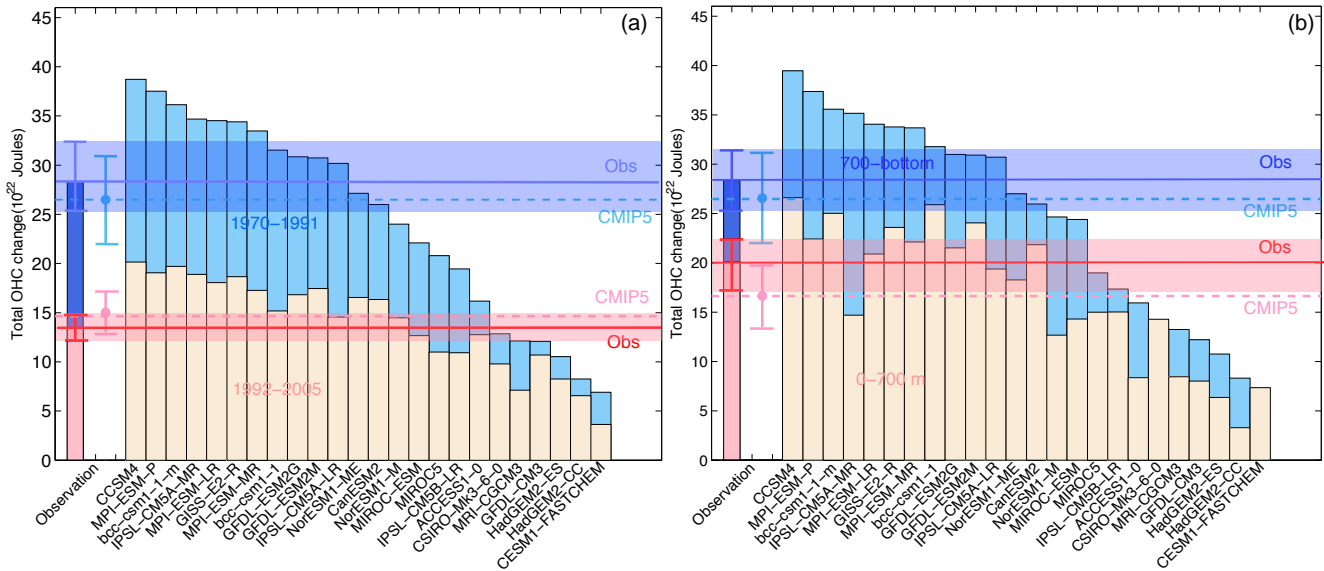


Figure 5. Comparison of full-depth OHC change between observation and CMIP5 models **(a)** for two separate time periods, 1970–1991 (in blue bars) and 1992–2005 (in red bars), and **(b)** for two vertical layers: 0–700 m (in red bars) and 700 m–bottom (in blue bars). The medians of the observational total OHC changes are shown in solid lines, compared with the model results in dashed lines. Their 5–95 % confidence intervals are presented in error bars. The 5–95 % confidence intervals for observations are also shaded in light red and light blue. A quadratic fit to the entire pre-industrial control run was used to correct the CMIP5 time series for model drift.

within 1970–2005 is $0.56 \times 10^{22} \text{ J yr}^{-1}$ for OHC0–700 m and $0.75 \times 10^{22} \text{ J yr}^{-1}$ for OHC0–700 m, both of which are nearly identical to the results in Table 2, suggesting that including Durack et al. (2014) does not influence the main conclusion of our study.

The distribution of OHC0–700 m from the 24 models after a correction of “climate drift” (see Methods) shows an ensemble median of $0.42 [0.32–0.51] \times 10^{22} \text{ J yr}^{-1}$ ($0.26 [0.19–0.37] \text{ Wm}^{-2}$) for the 1970–2005 time period and $0.89 [0.77–1.02] \times 10^{22} \text{ J yr}^{-1}$ ($0.55 [0.48–0.64] \text{ Wm}^{-2}$) for 1992–2005. The sensitivity of the results to the climate drift correction is very small (within $0.03 \times 10^{22} \text{ J yr}^{-1}$) when two different climate drift correction methods are applied (as shown in Tables 2 and 3 and Fig. 4). For the 1970–2005 period, the median of the CMIP5 models is significantly smaller than observations ($0.55 [0.50–0.60] \times 10^{22} \text{ J yr}^{-1}$), indicating that the models underestimate the upper 700 m OHC change since 1970. But within the 1992–2005 period, the median of the CMIP5 models falls into the confidence interval of the existing observational estimates, indicating that the ensemble median of models agrees very well with observational estimates in the recent period.

For full-depth OHC, drift-corrected CMIP5 models show the total OHC change by $0.68 [0.54–0.82] \times 10^{22} \text{ J yr}^{-1}$ ($0.42 [0.34–0.51] \text{ Wm}^{-2}$) from 1970 to 2005 and $1.25 [1.10–1.41] \times 10^{22} \text{ J yr}^{-1}$ ($0.77 [0.68–0.88] \text{ Wm}^{-2}$) during 1992–2005 (Fig. 3). The CMIP5 ensemble median again shows very good agreement with observations for both 1970–2005 ($0.74 \times 10^{22} \text{ J yr}^{-1}$) and 1992–2005 ($1.22 \times 10^{22} \text{ J yr}^{-1}$).

The central estimates of observation-based and CMIP5 OHC change are consistent within the estimated uncertainty. The total OHC decrease after the two major volcano eruptions is $\sim -0.60 [-0.81, -0.38] \times 10^{22} \text{ J}$ for El Chichón and $\sim -1.47 [-1.93, -1.00] \times 10^{22} \text{ J}$ for Pinatubo, which are weaker than for observations.

Table 2 provides a summary of observed and simulated OHC change for different time periods and depths. CMIP5 results are shown for the upper ocean, both with linear and quadratic drift corrections. Within the drift-corrected CMIP5 models, the rate of ocean warming has nearly doubled since 1992 (Fig. 5, Table 2): $0.56 [0.43, 0.68] \times 10^{22} \text{ J yr}^{-1}$ within 1970–1991 ($\sim 0.35 [0.26, 0.43] \text{ Wm}^{-2}$ over global surface) compared to $1.25 [1.10, 1.41] \times 10^{22} \text{ J yr}^{-1}$ during 1992–2005 ($\sim 0.77 [0.67, 0.87] \text{ Wm}^{-2}$) for both the drift-corrected CMIP5 ensembles, while for observations the corresponding values are $0.61 [0.53, 0.69] \times 10^{22} \text{ J yr}^{-1}$ within 1970–1991 ($\sim 0.38 [0.33, 0.43] \text{ Wm}^{-2}$), and $1.22 [1.16, 1.29] \times 10^{22} \text{ J yr}^{-1}$ during 1992–2005 ($\sim 0.75 [0.71, 0.80] \text{ Wm}^{-2}$). This provides evidence of an acceleration of ocean warming due to the increasing radiative forcing from rising greenhouse gases and from the effects of volcanic eruptions near the intersection of those two time periods (Myhre et al., 2013). This acceleration of ocean warming is also found by a recent study (Gleckler et al., 2016).

Furthermore, the model ensemble median of full-depth OHC agrees well with observations but significantly underestimates the OHC change in the upper 700 m (Fig. 5b), yet OHC changes for 700–6000 m in the models are likely to

overestimate the warming rate prior to 1990. Together these are indicators that the models might be too diffusive and that the vertical distribution of heat may not be correct, as suggested by previous studies (Forest et al., 2008; Kuhlbrodt and Gregory, 2012).

Although the comparison between the observational and CMIP5 full-depth OHC results in an insignificant difference, CMIP5 models show a large spread (Figs. 3, 4, and 5), indicating that there are still large uncertainties in model simulations of Earth's energy budget (Flato et al., 2013). The spread of CMIP5 models far exceeds the estimated observational uncertainty in the OHC changes, even for the upper 0–700 m where the model drift is expected to be less important compared to the deeper layer. There are two groups of models: seven models calculate a small upper 700 m ocean warming of less than $0.3 \times 10^{22} \text{ J yr}^{-1}$ over 1970–2005; the other group shows a 0–700 m ocean warming of $0.3\text{--}0.75 \times 10^{22} \text{ J yr}^{-1}$ (Fig. 3a). The first group also shows a much smaller full-depth OHC increase of less than $0.35 \times 10^{22} \text{ J yr}^{-1}$ than the second: $0.35\text{--}1.05 \times 10^{22} \text{ J yr}^{-1}$ over 1970–2005 (Fig. 3b). The second group shows better agreement with observational estimates. The models with smaller values should be treated with caution in future analyses. The reasons why the models have large divergence are still an actively studied issue. Frölicher et al. (2015) discussed the large range of model results and attributed a contribution of this to the differences in indirect aerosols. Additionally, CMIP5 has been missing post-2000 volcanic eruptions in these simulations as discussed in Glecker et al. (2016), but this effect is shown to be small and less than 0.1 Wm^{-2} , as indicated in Trenberth et al. (2014).

Furthermore, the OHC for models shows a non-Gaussian distribution (Fig. 3), potentially challenging our method of the use of Gaussian estimations for the confidence levels. However, there is no a priori reason for the statistics to be non-Gaussian, other than that there is a small sample and the likelihood that there are some outliers. The non-Gaussian nature of the distribution (Fig. 3) may be partly due to the small sample size. The use of the median reduces the impact of outliers and then enables us to use the standard deviation to characterize the spread.

4 Summary

This study presents new estimates of observed OHC change since 1970 based on improved mapping methods and XBT bias corrections. Our results suggest that previous IPCC-AR5 observational estimates of a 0–700 m OHC change of $\sim 0.26 \text{ Wm}^{-2}$ may be too low, typically by about $\sim 25\%$ compared to our findings here ($\sim 0.35 \text{ Wm}^{-2}$), supporting the conclusions of Durack et al. (2014) based on somewhat different constraints. Our estimates of full-depth OHC change show remarkably good agreement with the CMIP5 ensemble median response during 1970–2005 and give us

confidence that the climate models are not systematically biased in their simulation of historical variations in Earth's energy imbalance over this period.

The present work demonstrates how improvements in OHC estimation methods have led to a greater degree of consistency with climate model simulations of long-term changes in Earth's energy budget. In turn this allows an evaluation of the models and suggests that some may not be credible. Further work is needed to understand the spatial patterns of ocean heat uptake and TOA changes over the historical past as a means of assessing potential model deficiencies in key processes. Since 93 % of the energy of global warming is stored in the ocean, our observation-based results indicate that the ocean component of Earth's heat imbalance is $\sim 0.38 [0.33, 0.43] \text{ Wm}^{-2}$ from 1970 to 1991 and $\sim 0.75 [0.71, 0.80] \text{ Wm}^{-2}$ from 1992 to 2005. With 0.07 Wm^{-2} for the other components (Trenberth et al. 2014), the implied average energy imbalance is $0.46 [0.40, 0.52] \text{ Wm}^{-2}$ after 1970 and $0.82 [0.76, 0.88] \text{ Wm}^{-2}$ after 1992. For the period 1970–2005, our new value is about 15 % larger than the central estimate of Rhein et al. (2013) over the same period, and could have important implications for closure of the sea-level budget.

5 Data availability

The CZ14 data and CMIP5 OHCs are available at <http://159.226.119.60/cheng/> and data access to ORAS4 OHC is available at <https://climatedataguide.ucar.edu/climate-data/oras4-ecmwf-ocean-reanalysis-and-derived-ocean-heat-content>.

Acknowledgements. Lijing Cheng and Jiang Zhu are supported by National Natural Science Foundation of China (41506029) and Chinese Academy of Sciences' project "Western Pacific Ocean System: Structure, Dynamics and Consequences" (XDA11010405). Matthew D. Palmer is supported by the Joint UK DECC/Defra Met Office Hadley Centre Climate Programme (GA01101) and his work represents a contribution to Natural Environment Research Council DEEP-C project NE/K005480/1. Kevin E. Trenberth is supported by DOE grant DE-SC0012711. NCAR is sponsored by the National Science Foundation. We thank NOAA/NODC, who made the observational ocean temperature data set available. We acknowledge the World Climate Research Programme's Working Group on Coupled Modelling, which is responsible for CMIP, and we thank the climate modeling groups (listed in Table 1 of this paper) for producing and making available their model output. For CMIP the US Department of Energy's Program for Climate Model Diagnosis and Intercomparison provides coordinating support and led development of software infrastructure in partnership with the Global Organization for Earth System Science Portals.

Edited by: M. Hecht

Reviewed by: M. Balmaseda and one anonymous referee

References

- Abraham, J. P., Reseghetti, F., Baringer, M., Boyer, T., Cheng, L., Church, J., Domingues, C., Fasullo, J. T., Gilson, J., Goni, G., Good, S., Gorman, J. M., Gouretski, V., Ishii, M., Johnson, G. C., Kizu, S., Lyman, J., MacDonald, A., Minkowycz, W. J., Moffitt, S. E., Palmer, M., Piola, A., Trenberth, K. E., Velicogna, I., Wijffels, S., and Willis, J.: A review of global ocean temperature observations: implications for ocean heat content estimates and climate change, *Rev. Geophys.*, 51, 450–483, 2013.
- Balmaseda, M. A., Trenberth, K. E., and Källén, E.: Distinctive climate signals in reanalysis of global ocean heat content, *Geophys. Res. Lett.*, 40, 1–6, doi:10.1002/grl.50382, 2013.
- Boyer, T. P., Antonov, J. I., Baranova, O. K., Boyer, T. P., Coleman, C. L., Garcia, H. E., Grodsky, A. I., Johnson, D. R., Locarnini, R. A., Mishonov, A. V., Reagan, J. R., Sazama, C. L., Seidov, D., Smolyar, I., Yarosh, E. S., and Reagan, J. R.: World Ocean Database 2013, edited by: Levitus, S. and Mishonov, A., NOAA Atlas NESDIS 72, 209 pp., 2013.
- Cheng, L. and Zhu, J.: Artifacts in variations of ocean heat content induced by the observation system changes, *Geophys. Res. Lett.*, 20, 7276–7283, 2014.
- Cheng, L. and Zhu, J.: Influences of the choice of climatology on ocean heat content estimation, *J. Atmos. Ocean. Technol.*, 32, 388–394, 2015.
- Cheng, L., Zhu, J., Cowley, R., Boyer, T., and Wijffels, S.: Time, probe type and temperature variable bias corrections to historical expendable bathythermograph observations, *J. Atmos. Ocean. Technol.*, 31, 1793–1825, 2014.
- Cheng, L., Zhu, J., and Abraham, J.: Global upper ocean heat content estimation: recent progress and the remaining challenges, *Atmos. Ocean. Sci. Lett.*, 8, 333–338, doi:10.3878/AOSL20150031, 2015a.
- Cheng, L., Abraham, J., Goni, G., Boyer, T., Wijffels, S., Cowley, R., Gouretski, V., Reseghetti, F., Kizu, S., Dong, S., Bringas, S., Goes, M., Houpert, L., Sprintall, J., and Zhu, J.: XBT Science: assessment of instrumental biases and errors, *B. Am. Meteorol. Soc.*, 97, 924–933, doi:10.1175/BAMS-D-15-00031.1, 2015b.
- Church, J. A., White, N. J., and Arblaster, J. M.: Significant decadal-scale impact of volcanic eruptions on sea level and ocean heat content, *Nature*, 438, 74–77, 2005.
- Church, J. A., White, N. J., Konikow, L. F., Domingues, C. M., Cogley, J. G., Rignot, E., Gregory, J. M., van den Broeke, M. R., Monaghan, A. J., and Velicogna, I.: Revisiting the Earth's sea-level and energy budgets from 1961 to 2008, *Geophys. Res. Lett.*, 38, L18601–L18608, 2011.
- Domingues, C. M., Church, J. A., White, N. J., Gleckler, P. J., Wijffels, S. E., Barker, P. M., and Dunn, J. R.: Improved estimates of upper-ocean warming and multi-decadal sea-level rise, *Nature*, 453, 1090–U1096, 2008.
- Durack, P. and Wijffels, S.: Fifty-year trends in global ocean salinities and their relationship to broad-scale warming, *J. Climate*, 23, 4342–4362, 2010.
- Durack, P., Gleckler, P. J., Landerer, F., and Taylor, K. E.: Quantifying underestimates of long-term upper-ocean warming, *Nature Climate Change*, 4, 999–1005, doi:10.1038/NCLIMATE2389, 2014.
- Flato, G., Marotzke, J., Abiodun, B., Braconnot, P., Chou, S. C., Collins, W., Cox, P., Driouech, F., Emori, S., Eyring, V., Forest, C., Gleckler, P., Guilyardi, E., Jakob, C., Kattsov, V., Reason, C., and Rummukainen, M.: Evaluation of climate models, in: *Climate Change 2013: The Physical Science Basis, Contribution of Working Group I to the Fifth Assessment Report of the Intergovernmental Panel on Climate Change*, edited by: Stocker, T. F., Qin, D., Plattner, G. K., Tignor, M., Allen, S. K., Boschung, J., Nauels, A., Xia, Y., Bex, V., and Midgley, P. M., Cambridge University Press, Cambridge, United Kingdom and New York, NY, USA, 777–787, 2013.
- Forest, C. E., Stone, P. H., and Sokolov, A. P.: Constraining climate model parameters from observed 20th century changes, *Tellus A*, 60, 911–920, doi:10.1111/j.1600-0870.2008.00346.x, 2008.
- Frölicher, T., Sarmiento, J. L., Paynter, D. J., Dunne, J. P., Krasting, J. P., and Winton, M.: Dominance of the Southern Ocean in Anthropogenic Carbon and Heat Uptake in CMIP5 Models, *J. Climate*, 28, 862–886, 2015.
- Gleckler, P. J., Santer, B. D., Domingues, C. M., Pierce, D. W., Barnett, T. P., Church, J. A., Taylor, K. E., AchutaRao, K. M., Boyer, T. P., Ishii, M., and Caldwell, P. M.: Human-induced global ocean warming on multidecadal timescales, *Nature Climate Change*, 2, 524–529, 2012.
- Gleckler, P. J., Durack, P. J., Stouffer, R. J., Johnson, G. C., and Forest, C. E.: Industrial-era global ocean heat uptake doubles in recent decades, *Nature Climate Change*, 6, 394–398, doi:10.1038/nclimate2915, 2016.
- Gouretski, V. and Koltermann, K. P.: How much is the ocean really warming?, *Geophys. Res. Lett.*, 34, L01610, doi:10.1029/2006GL027834, 2007.
- Hobbs, W., Palmer, M., and Monselesan, D.: An energy conservation analysis of ocean drift in the CMIP5 global coupled models, *J. Climate*, 29, 1639–1653, doi:10.1175/JCLI-D-15-0477.1, 2015.
- Ishii, M. and Kimoto, M.: Reevaluation of historical ocean heat content variations with time-varying XBT and MBT depth bias corrections, *J. Oceanogr.*, 65, 287–299, 2009.
- Ishii, M., Kimoto, M., and Kachi, M.: Historical ocean subsurface temperature analysis with error estimates, *Mon. Weather Rev.*, 131, 51–73, 2003.
- Kuhlbrodt, T. and Gregory, J. M.: Ocean heat uptake and its consequences for the magnitude of sea level rise and climate change, *Geophys. Res. Lett.*, 39, L18608, doi:10.1029/2012GL052952, 2012.
- Levitus, S., Antonov, J., and Boyer, T.: Warming of the worldocean, 1955–2003, *Geophys. Res. Lett.*, 32, L02604, doi:10.1029/2004GL021592, 2005.
- Levitus, S., Antonov, J. I., Boyer, T. P., Baranova, O. K., Garcia, H. E., Locarnini, R. A., Mishonov, A. V., Reagan, J. R., Seidov, D., Yarosh, E. S., and Zweng, M. M.: World ocean heat content and thermosteric sea level change (0–2000 m), 1955–2010, *Geophys. Res. Lett.*, 39, L10603, doi:10.1029/2012GL051106, 2012.
- Loeb, N. G., Lyman, J. M., Johnson, G. C., Allan, R. P., Doelling, D. R., Wong, T., Soden, B. J., and Stephens, G. L.: Observed changes in top-of-the-atmosphere radiation and upper-ocean heating consistent within uncertainty, *Nat. Geosci.* 5, 110–113, 2012.
- Lyman, J. and Johnson, G.: Estimating global ocean heat content changes in the upper 1800 m since 1950 and the influence of climatology choice, *J. Climate*, 27, 1945–1957, 2014.

- Lyman, J. M., Good, S. A., Gouretski, V. V., Ishii, M., Johnson, G. C., Palmer, M. D., Smith, D. M., and Willis, J. K.: Robust warming of the global upper ocean, *Nature*, 465, 334–337, 2010.
- Mann, M. E., Cane, M. A., Zebiak, S. E., and Clement, A.: Volcanic and solar forcing of the tropical pacific over the past 1000 years, *J. Climate*, 18, 447–456, 2005.
- Mayer, M. K., Trenberth, K. E., Haimberger, L., and Fasullo, J. T.: The response of tropical atmospheric energy budgets to ENSO, *J. Climate*, 26, 4710–4724, doi:10.1175/JCLI-D-12-00681.1, 2013.
- Meehl, G. A., Covey, C., Delworth, T., Mojić, L., McAvaney, B., Mitchell, J. F. B., Stouffer, R. J., and Taylor, K. E.: The WCRP CMIP3 multimodel dataset: a new era in climate change research, *B. Am. Meteorol. Soc.*, 88, 1383–1394, 2007.
- Myhre, G., Shindell, D., Bréon, F. M., Collins, W., Fuglestedt, J., Huang, J., Koch, D., Lamarque, J. F., Lee, D., Mendoza, B., Nakajima, T., Robock, A., Stephens, G., Takemura, T., and Zhang, H.: Anthropogenic and Natural Radiative Forcing, in: *Climate Change 2013: The Physical Science Basis, Contribution of Working Group I to the Fifth Assessment Report of the Intergovernmental Panel on Climate Change* edited by: Stocker, T. F., Qin, D., Plattner, G. K., Tignor, M., Allen, S. K., Boschung, J., Nauels, A., Xia, Y., Bex, V., and Midgley, P. M., Cambridge University Press, Cambridge, United Kingdom and New York, NY, USA, 659–740, 2013.
- Palmer, M. D. and Haines, K.: Estimating oceanic heat content change using isotherms, *J. Climate*, 22, 4953–4969, 2009.
- Palmer, M., Antonov, J., Barker, P., Bindoff, N., Boyer, T., Carson, M., Domingues, C. M., Gille, S., Gleckler, P., Good, S., Gouretski, V., Guinehut, S., Haines, K., Harrison, D. E., Ishii, M., Johnson, G. C., Levitus, S., Lozier, M. S., Lyman, J. M., Meijers, A., von Schuckmann, K., Smith, D., Wijffels, S., and Gouretski, V.: Future observations for monitoring globalocean heat content, in *Proceedings of the OceanObs'09: Sustained Ocean Observations and Information for Society Conference, September 2009*, edited by: Hall, J., Harrison, D. E., and Stammer, D., 2, 21–25, ESA Publication WPP-306, Venice, Italy, 2010.
- Palmer, M. D. and McNeall, D. J.: Internal variability of Earth's energy budget simulated by CMIP5 climate models, *Environ. Res. Lett.*, 9, 034016, doi:10.1088/1748-9326/9/3/034016, 2014.
- Palmer, M. D., Good, S. A., Haines, K., Rayner, N. A., and Stott, P. A.: A new perspective on warming of the global oceans, *Geophys. Res. Lett.*, 36, L20709, doi:10.1029/2009GL039491, 2009.
- Palmer, M. D., Roberts, C. D., Balmaseda, M., Chang, Y.-S., Chepurin, G., Ferry, N., Fujii, Y., Good, S. A., Guinehut, S., Haines, K., Hernandez, F., Köhl, A., Lee, T., Martin, M. J., Masina, S., Masuda, S., Peterson, K. A., Storto, A., Toyoda, T., Valdivieso, M., Vernieres, G., Wang, O., and Xue, Y.: Ocean heat content variability and change in an ensemble of ocean reanalyses, *Clim. Dynam.*, 1–22, doi:10.1007/s00382-015-2801-0, 2015.
- Purkey, S. and Johnson, G.: Warming of global abyssal and deep southern ocean waters between the 1990s and 2000s: contributions to global heat and sea level rise budgets, *J. Climate*, 23, 6336–6351, 2010.
- Rhein, M., Rintoul, S. R., Aoki, S., Campos, E., Chambers, D., Feely, R. A., Gulev, S., Johnson, G. C., Josey, S. A., Kostianoy, A., Mauritzen, C., Roemmich, D., Talley, L. D., and Wang F.: Observations: Ocean, in: *Climate Change 2013: The Physical Science Basis, Contribution of Working Group I to the Fifth Assessment Report of the Intergovernmental Panel on Climate Change*, edited by: Stocker, T. F., Qin, D., Plattner, G. K., Tignor, M., Allen, S. K., Boschung, J., Nauels, A., Xia, Y., Bex, V., and Midgley, P., Cambridge Univ. Press, Cambridge, UK, and New York, 261–265, 2013.
- Roemmich, D. and Gilson, J.: The global ocean imprint of ENSO, *Geophys. Res. Lett.*, 38, L13606, doi:10.1029/2011GL047992, 2011.
- Roemmich, D., Church, J., Gilson, J., Monselesan, D., Sutton, P., and Wijffels, S.: Unabated planetary warming and its ocean structure since 2006, *Nature Climate Change*, 5, 240–245, doi:10.1038/nclimate2513, 2015.
- Sen Gupta, A., Jourdain, N. C., Brown, J. N., and Monselesan, D.: Climate drift in the CMIP5 Models, *J. Climate*, 26, 8597–8615, 2013.
- Smith, D. M. and Murphy, J. M.: An objective ocean temperature and salinity analysis using covariances from a global climate model, *J. Geophys. Res. Oceans*, 11, C02022, doi:10.1029/2005JC003172, 2007.
- Taylor, K. E., Stouffer, R. J., and Meehl, G. A.: An overview of cmip5 and the experiment design, *B. Am. Meteorol. Soc.*, 93, 485–498, 2012.
- Trenberth, K., Fasullo, J., and Balmaseda, M.: Earth's energy imbalance, *J. Climate*, 27, 3129–3144, 2014.
- Trenberth, K. E.: Has there been a hiatus?, *Science*, 349, 691–692, doi:10.1126/science.aac9225, 2015.
- Trenberth, K. E. and Fasullo, J. T.: Tracking earth's energy: from El Niño to global warming, *Surv. Geophys.*, 33, 413–426, 2012.
- von Schuckmann, K., Sallée, J.-B., Chambers, D., Le Traon, P.-Y., Cabanes, C., Gaillard, F., Speich, S., and Hamon, M.: Consistency of the current global ocean observing systems from an Argo perspective, *Ocean Sci.*, 10, 547–557, doi:10.5194/os-10-547-2014, 2014.
- von Schuckmann, K., Palmer, M. D., Trenberth, K. E., Cazenave, A., Chambers, D., Champollion, N., Hansen, J., Josey, S. A., Loeb, N., Mathieu, P.-P., Meyssignac, B., and Wild, M.: An imperative to monitor Earth's energy imbalance, *Nature Climate Change*, 6, 138–144, 2016.
- Xue, Y., Balmaseda, M. A., Boyer, T., Ferry, N., Good, S., Ishikawa, I., Kumar, A., Rienecker, M., Rosati, A., and Yin, Y.: A comparative analysis of upper ocean heat content variability from an ensemble of operational ocean reanalyses, *J. Climate*, 25, 6905–6929, 2012.