

Research Article

Alternative Pathways of Cancer Cell Death by Rottlerin: Apoptosis versus Autophagy

**Claudia Torricelli,¹ Sara Salvadori,¹ Giuseppe Valacchi,^{2,3} Karel Souček,^{4,5}
Eva Slabáková,^{4,5} Michela Muscettola,¹ Nila Volpi,⁶ and Emanuela Maioli¹**

¹ Department of Physiology, University of Siena, Via Aldo Moro, 7-53100 Siena, Italy

² Department of Biology and Evolution, University of Ferrara, Via Luigi Borsari 46, 44100 Ferrara, Italy

³ Department of Food and Nutrition, Kyung Hee University, Seoul 130-701, Republic of Korea

⁴ Department of Cytokinetics, Institute of Biophysics AS CR, v.v.i. Kralovopolska 135, 612 65 Brno, Czech Republic

⁵ Center of Biomolecular and Cellular Engineering and International Clinical Research Center, St. Anne's University Hospital Brno, 1656 91 Brno, Czech Republic

⁶ Department of Biomedical Sciences, University of Siena, Via Aldo Moro, 7-53100 Siena, Italy

Correspondence should be addressed to Emanuela Maioli, emanuela.maioli@unisi.it

Received 22 October 2012; Revised 26 November 2012; Accepted 28 November 2012

Academic Editor: Chun-Tao Che

Copyright © 2012 Claudia Torricelli et al. This is an open access article distributed under the Creative Commons Attribution License, which permits unrestricted use, distribution, and reproduction in any medium, provided the original work is properly cited.

Since the ability of cancer cells to evade apoptosis often limits the efficacy of radiotherapy and chemotherapy, autophagy is emerging as an alternative target to promote cell death. Therefore, we wondered whether Rottlerin, a natural polyphenolic compound with antiproliferative effects in several cell types, can induce cell death in MCF-7 breast cancer cells. The MCF-7 cell line is a good model of chemo/radio resistance, being both apoptosis and autophagy resistant, due to deletion of caspase 3 gene, high expression of the antiapoptotic protein Bcl-2, and low expression of the autophagic Beclin-1 protein. The contribution of autophagy and apoptosis to the cytotoxic effects of Rottlerin was examined by light, fluorescence, and electron microscopic examination and by western blotting analysis of apoptotic and autophagic markers. By comparing caspases-3-deficient (MCF-7^{3def}) and caspases-3-transfected MCF-7 cells (MCF-7^{3trans}), we found that Rottlerin induced a noncanonical, Bcl-2-, Beclin 1-, Akt-, and ERK-independent autophagic death in the former- and the caspases-mediated apoptosis in the latter, in not starved conditions and in the absence of any other treatment. These findings suggest that Rottlerin could be cytotoxic for different cancer cell types, both apoptosis competent and apoptosis resistant.

1. Introduction

Some forms of cell death are biologically programmed, therefore, they can be pharmacologically modulated. This knowledge stimulated the study of these cellular events in various fields of medicine, especially in the development of anticancer therapies.

Currently, programmed cell death (PCD) refers to both apoptosis (type I PCD) and autophagy (type II PCD).

Until recently, apoptosis was thought to be the major mechanism of cell death in response to chemo- and radiation therapy. However, the frequent deregulation of the apoptotic pathway in cancer cells constitutes a serious clinical problem,

and, as an alternative route of cell death, autophagy is emerging as an important target for new anticancer drugs.

Autophagy is typically a physiologic survival mechanism which permits to enclose toxic debris, misfolded proteins, and damaged organelles in a double-membrane autophagosome and drive them towards the lysosomal degradation. In addition to the removal of cellular garbage, to limit necrosis and inflammation, the recycle of macromolecules also constitutes a valid alternative energy source during stresses, such as starvation and hypoxia. However, when this survival strategy is unsuccessful, the cell death programs can be activated. Indeed, depending on the cell type and the level of the insult, autophagy can shift gradually towards apoptosis

and necrosis, or occur simultaneously, or lead to cell death by itself.

Therefore, paradoxically, both inhibition and massive stimulation of autophagy can hinder cell survival and increase cell death [1].

In previous studies, we found that Rottlerin, a natural polyphenol purified from the kamala powder [2], may act as an antitumor agent by a variety of mechanisms, such as Akt and ERK-independent cell cycle arrest in MCF-7 cells [3], functional suppression of the transcription factor NF κ B in MCF-7, HT-29 cells [4], and in HaCaT keratinocytes [5] and angiogenesis inhibition [6]. Several other studies have reported the anticancer potential of Rottlerin in different human malignant tumor cells. For example, Rottlerin sensitizes cancer cells to apoptotic stimuli [7–9] and promotes autophagy in certain cell types [10–12].

Rottlerin, however, possesses so many biological activities that the primary molecular target and mechanism of action by which Rottlerin can kill cancer cells are unpredictable [13, 14]. Rottlerin, indeed, is a very versatile substance that has been used for decades as a PKC δ inhibitor [15], though recently it has been shown that Rottlerin does not inhibit this kinase *in vitro*, but several other enzymes [16] activates the BK potassium channels [17] and acts as a mitochondrial uncoupler [18].

The starting point of the current study is the observation that Rottlerin not only inhibits proliferation, but also kills MCF-7 cells, in not starved conditions and in the absence of any other treatment.

The MCF-7 cell line is an interesting model for studying the efficacy of anticancer drugs because this cell has a high apoptotic threshold due to caspase 3 *gene* deletion [19] and Bcl-2 overexpression [20]. In addition, Beclin-1, the mammalian ortholog of yeast Atg6/Vps30 with a key role in autophagosome formation [21], is expressed at low basal levels in MFC-7 cells [22], hence they are expectedly also resistant to autophagy triggered by canonical pathways. Moreover, MCF-7 cells are transglutaminase 2 (TG 2) deficient [23], thus they are refractory to the TG 2 downregulation-mediated autophagy that has been described in other cancer cells following Rottlerin treatment [10].

Therefore, we wondered whether autophagy or apoptosis occurs in dying cells, and whether one is the preceding cause of the other, ultimately resulting in cell death.

2. Materials and Methods

2.1. Materials. Minimum essential medium (MEM), fetal bovine serum (FBS), antibiotics, dimethyl sulfoxide (DMSO), 3-methyladenine (3-MA), and monodansylcadaverine (MDC) were from Sigma (Milan, Italy). Flasks and culture plates were from Steroglass (Milan, Italy). Rottlerin was from Calbiochem (Milan, Italy). M-PER Mammalian Protein Extraction Reagent and Halt Protease and Phosphatase inhibitor cocktail were from Pierce (Milan, Italy). Antibodies against caspase 9, caspase 3, PARP, Bcl-2, Beclin-1, LC3, SQSTM1/p62, and β -actin were from Cell

Signaling Technology (Celbio, Milan, Italy). Equipment and all reagents for protein assay and western blotting analysis were from Invitrogen (Milan, Italy). Nitrocellulose and ECL western blotting system were from GE Healthcare (Milan, Italy).

2.2. Cells and Culture Conditions. MCF-7^{3def} cells, derived from a pleural effusion of human breast adenocarcinoma, were supplied by Istituto Zooprofilattico Sperimentale della Lombardia e dell'Emilia-Romagna, (Brescia, Italy). MCF-7^{3trans} cells were a kind gift from Dr. R. U. Jänicke [24]. Cells were grown and maintained in 25 cm² tissue culture flasks in a humidified atmosphere (95% air/5% CO₂) at 37°C in MEM containing 10% FBS, Na-Pyruvate (1 mM), glutamin (2 mM), and antibiotics (100 U/mL penicillin, 100 μ g/mL streptomycin, and 250 ng/mL amphotericin B). After reaching subconfluence, cells were treated with the indicated concentrations of Rottlerin or vehicle (DMSO) in complete medium containing 2.5% FBS for the indicated periods.

2.3. Sulforodamine (SRB) Assay. The cytotoxicity of Rottlerin was evaluated by the SRB colorimetric assay. This assay, originally described by Skehan et al. [25] measures cellular protein content to determine cell density. Cells were seeded in triplicate on 96-well plates, incubated 4–6 h at 37°C to allow adherence, and incubated with 20 μ M of Rottlerin for 24–72 h or with an increasing concentration (0.1–100 μ M) of Rottlerin for 24 h. Following treatment, the medium was aspirated, and cells were washed two times with PBS and fixed by addition of 100 μ L/well of cold 10% trichloroacetic acid (TCA). The plate was incubated at 4°C for 30 min before being gently washed four times with tap water to remove TCA, growth medium, and dead cells. It was allowed to dry in air, then 100 μ L of 0.4% w/v SRB dissolved in 1% acetic acid in water was added to each well for 30 min. At the end of the staining period, unbound SRB was removed by washing four times with 1% acetic acid. The plate was air dried again, and 200 μ L of 10 mM aqueous Tris base (pH 10.5) was added into each well to solubilize the cell-bound dye. The plate was mixed for 30 min by pipetting up and down to dissolve the dye completely. The optical density (OD) was recorded in a microplate spectrophotometer at 550–580 nm.

2.4. Direct Cell Counting. MCF-7^{3def} cells were seeded in triplicate on 6-well plates and incubated for 4–6 h at 37°C to allow adherence. After incubation with 20 μ M of Rottlerin for 24–72 h or with an increasing concentration (0.1–100 μ M) of Rottlerin for 24 h, cells were trypsinized, resuspended in MEM, and stained by mixing (1 : 1) with 4% Trypan Blue dye solution (diluted in PBS). The number of cells which excluded Trypan Blue (considered viable) was counted in a Burker chamber within 5 min after staining.

2.5. Morphology Study—Fluorescent Microscopy. For analysis of apoptotic cell death, Hoechst 33342 staining was used. The dye freely crosses the plasma membrane, binds specifically to the A-T base region of DNA, and emits fluorescence.

MCF-7^{3def} and MCF-7^{3def}, cultured on 24-well plates for 18 h and 24 h in MEM 2.5% FBS with or without Rottlerin (20 μ M), were stained with Hoechst 33342 (10 μ g/mL in PBS) in the dark at room temperature for 30 min. After incubation, cells were examined at 355 nm excitation and 460 nm emission by inverted fluorescence microscopy (Nikon Eclipse TE 300, Germany). Intact undamaged nuclei are homogeneously stained, while apoptotic nuclei exhibit clumps of hypercondensed chromatin. Morphological changes occurring in Rottlerin-treated cells were also observed under phase contrast microscope and photographed using CCD camera attached to the microscope.

2.6. Morphology Study—Transmission Electron Microscopy (TEM). TEM was used to determine the ultrastructure of intracellular components of treated and control MCF-7^{3def} cells. After 18 h of 20 μ M Rottlerin treatment, cells, cultured in 6-well plates, were trypsinized fixed in 2.5% glutaraldehyde in PBS, pH 7.4, at 4°C. They were then washed in PBS and postfixed in 1.33% osmium tetroxide for 2 h at 4°C. After several washes in PBS, the samples were dehydrated in graded alcohols, transferred into toluene, and embedded in Epon 812 resin. The resin was allowed to polymerize in a dry oven at 60°C for 24 h. Ultrathin sections were stained with uranyl acetate-lead citrate and evaluated on a Philips CM 10 transmission electron microscope (Philips, Eindhoven, The Netherlands). Each observation was carried out independently 6-7 times per sample.

2.7. Detection of Autophagic Vacuoles with Monodansylcadaverine (MDC). MCF-7^{3def} cells were cultured on 24-well plates for 6, 18, and 24 h in MEM 2.5% FBS with or without 20 μ M Rottlerin. Following treatments, autophagic vacuoles were detected by incubating the cells at 37°C for 10 min in PBS containing 50 μ M MDC, a widely used special tracer for autophagic vacuoles [26]. After incubation, cells were washed four times with PBS and immediately analyzed at 380 nm excitation and 525 nm emission by inverted fluorescence microscopy (Nikon Eclipse TE 300, Germany).

2.8. Bcl-2 Silencing and Overexpression. MCF-7^{3def} cells were transfected using Neon Transfection System (Life Technologies, 100 μ L tip, 1100 V, 30 ms, 2 pulses, transfection efficiency ~70%, and viability ~80%) with 40 nM Bcl-2 siRNA (Sigma, EHU135281) or 1 μ g of pcDNA3 Bcl-2 expression vector (kind gift from Yamamoto et al. [27]) and seeded on 6-well plates. Twenty four hours after transfection, cells were treated with Rottlerin (1, 10 μ M) or vehicle (DMSO) for further 24 hours and processed for western blot analysis. In an attempt to better reveal the eventual role of Bcl-2 in the Rottlerin autophagic effect, lower concentrations of Rottlerin were used.

2.9. Protein Extracts. Cells were cultured in 25 cm² culture flasks and, at about 70–80% confluence, were treated with 20 μ M Rottlerin for different times at 37°C. After treatments, cells were washed with PBS and then lysed with 0.1 mL of M-PER mammalian protein extraction reagent containing

a cocktail of protease and phosphatase inhibitors. After shaking for 10 min, the lysates were collected and transferred to 1.5 mL centrifuge tubes. Cell debris was pelleted by centrifugation at 14,000 \times g for 15 min. The supernatants were transferred to new tubes, and the protein concentration was measured using Bio-Rad protein assay reagent.

2.10. Western Blotting Analysis. Cell extracts, each containing 40 μ g of total protein, were resolved on a precast 4%–20% SDS-polyacrylamide gradient gel. Proteins were electrotransferred onto nitrocellulose membranes which were blocked by 5% nonfat dry milk in TBS containing 0.1% Tween 20 for 1 h at room temperature. Then, the blots were probed with primary polyclonal antibodies overnight at 4°C.

After washing, horseradish peroxidase-conjugated IgG was added for 1.5 h at room temperature. β -actin was used as a loading control. The blots were developed by the ECL and exposed on photographic film. Immunoreactive bands were quantified by Image J analysis software.

2.11. Statistical Analysis. All experiments were repeated at least three times. The data were expressed as means \pm SD. The differences between the Rottlerin-treated and control cells were analyzed using the Student's *t* test, a probability of *P* < 0.05 being considered significant.

3. Results

3.1. Rottlerin Kills MCF-7^{3def} Cells. Since we previously found that Rottlerin interferes in the 3-(4,5-dimethylthiazol-2-yl)-2,5-diphenyl tetrazolium bromide (MTT) viability test [28], in the current study, the Rottlerin cytotoxicity on MCF-7^{3def} cells was evaluated by the SRB assay. As shown in Figure 1(a), a 24-hour treatment with 0.1–100 μ M Rottlerin induced cytotoxicity dose dependently with an IC₅₀ of approximately 20 μ M. As shown in Figure 1(b), a 20 μ M Rottlerin treatment for 24 to 72 h, time dependently, induced cytotoxicity and also lowered the initial number of seeded cells (Figure 1(c)), demonstrating that the decreased cellularity in Rottlerin-treated cultures, in addition to growth inhibition, was due to cell death.

These results have been confirmed by Trypan Blue exclusion test and direct cell counting in the Bürker chamber (Figures 1(d)-1(e)).

3.2. Rottlerin Does Not Induce Apoptosis in MCF-7^{3def} Cells. Next, we investigated whether Rottlerin induces apoptosis in MCF-7^{3def}. As showed in Figure 2(a), western blot analysis revealed that despite a slight decrease of the antiapoptotic protein Bcl-2, no caspase 9 activation was observed up to 24 h of treatment. Although the cleavage of poly ADP-ribose polymerase (PARP) occurred after 18 h and 24 h treatment, nuclear staining with Hoechst 33342 (Figure 2(b)), at the same time points, failed to reveal any typical apoptotic nuclear change. Nevertheless, ultrastructural analysis using TEM showed some nuclear morphological alterations, such as chromatin clumping and marginalization in MCF-7^{3def} cells treated with Rottlerin for 24 h (Figure 3(c)), indicating

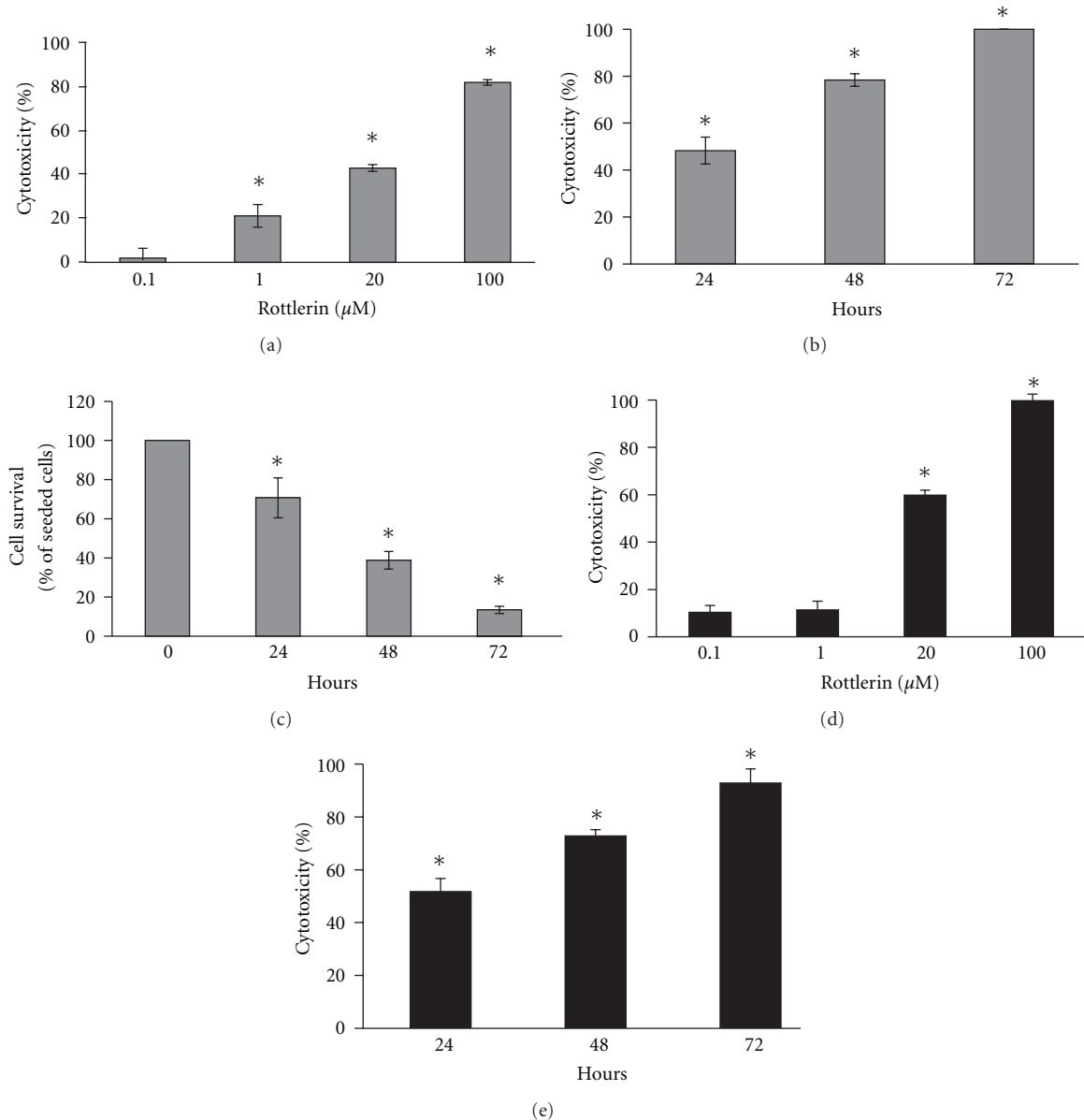


FIGURE 1: Rottlerin is cytotoxic for MCF-7^{3def} cells. (a) Rottlerin treatment for 24 h induced cytotoxicity, evaluated by the SRB assay, in a dose-dependent manner, with a IC₅₀ of approximately 20 μM. (b) Cytotoxicity after 24–72 h exposure to 20 μM Rottlerin. Controls (24–72 h) were exposed to DMSO alone. (c) Cell survival expressed as % of seeded cells (control). Results are the means ± SD of at least three independent experiments in quadruplicate. ((d) and (e)) Dose- and time-dependent cytotoxicity evaluated by direct cell counting (Trypan Blue). % cytotoxicity: 100 × (cell control – experimental)/cell control. *P < 0.05 compared with the control.

that a late onset of (caspase-3 independent) apoptosis might contribute to cell death. However, since Rottlerin caused the loss of about 50% of cells within 24 h, we concluded that the large majority of MCF-7^{3def} died by a mechanism other than apoptosis.

3.3. Rottlerin Induces Autophagy in MCF-7^{3def} Cells. Next, we addressed the question as to whether Rottlerin would induce autophagy in the same cells. As shown in Figures 3(a) and 3(b), both cell staining with Toluidine Blue and phase contrast microscopy revealed the presence of numerous

cytoplasmic vacuoles after 18–24 h of Rottlerin treatment. An ultrastructural analysis by TEM confirmed the presence of large vacuoles that accumulated in the cytoplasm after a 24-hour treatment (Figure 3(c)). To assess whether cellular vacuolisation had reference to autophagy, we detected the formation of autophagosomes through MDC staining. As shown in Figure 4(a), under a fluorescence microscope, vacuoles stained with MDC appeared as dot-like structures distributed in the cytoplasm, which increased over time, from 6 to 24 h after Rottlerin treatment, thus confirming their autophagic nature. To further substantiate this

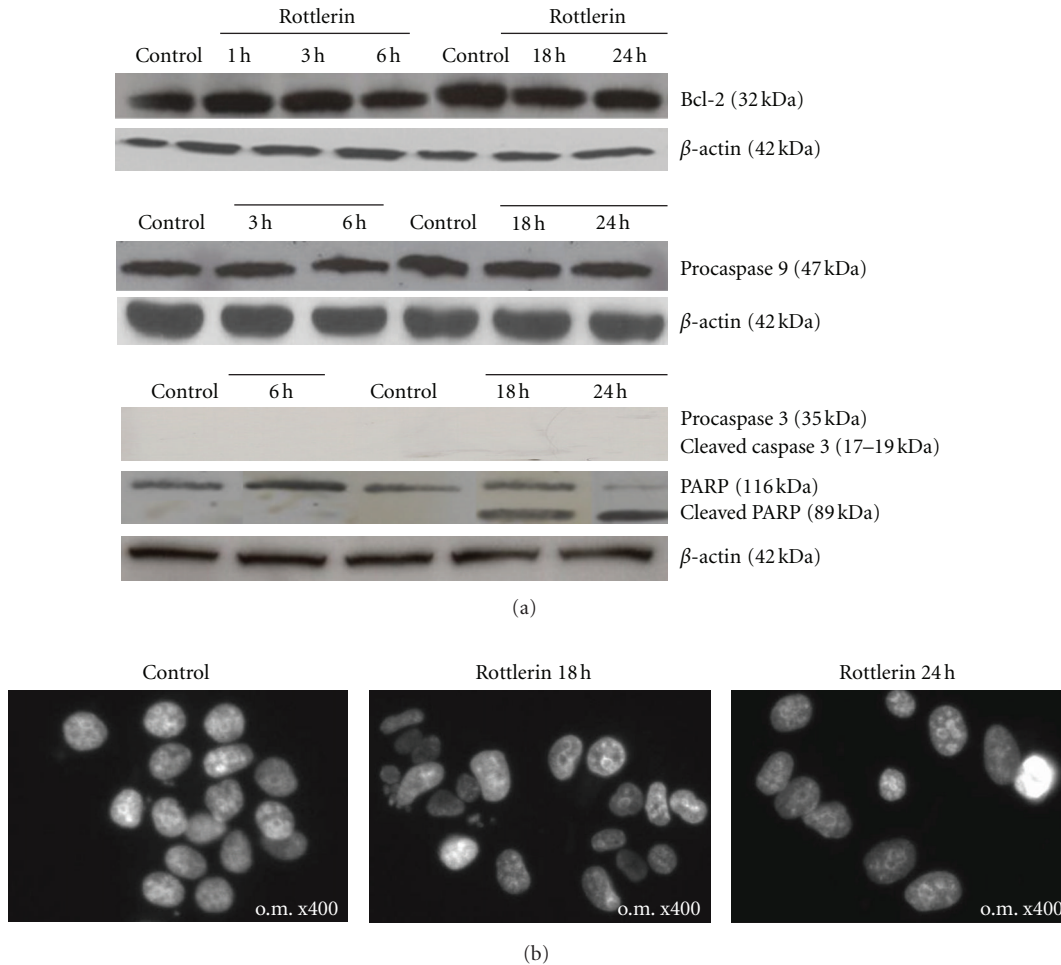


FIGURE 2: Rottlerin did not induce apoptosis in MCF-7^{3def} cells. (a) Western blot analysis of the antiapoptotic protein Bcl-2, caspase 9, caspase 3, and PARP after 1–24 h of 20 μ M Rottlerin treatment; β -actin was used as loading control. (b) Nuclear staining with Hoechst 33342 after 18 and 24 h treatment; o.m.: original magnification. Representative of three independent experiments.

result, we examined if there were increased levels of the autophagosomes-associated lipidated LC3-II form, a specific marker of autophagy in mammalian cells [29]. Immunoblotting analysis of cell lysates was performed using an anti-LC3 antibody that detects both LC3-I and LC3-II. As shown in Figure 4(b), in control MCF-7^{3def} cells, we detected the presence of both LC3-I and LC3-II bands, the densitometry of which resulted in a LC3-II/LC3-I ratio of about 0.2, likely representing the basal level of autophagy that exists in resting cells. Upon Rottlerin treatment, the LC3-II/LC3-I ratio increased very rapidly (1 h), peaked at 18 h, and was sustained over time (about 4-fold higher than in control after 24 h). This temporal behavior indicates that autophagy occurs prior to and independently of the apoptotic process. In order to exclude that the accumulation of LC3 was due to inhibition, rather than induction of autophagy, we measured the sequestosome-1 (SQSTM1)/p62 protein, as a marker of autophagic flux. As shown in Figure 4(c), western blotting analysis revealed that it was degraded during the late autophagic process (18–24 h).

3.4. Rottlerin Induces Beclin-1-Independent Autophagic Death in MCF-7^{3def} Cells. As Beclin-1 has a key role in autophagosome formation, mediating the localization of other autophagy proteins to the preautophagosomal membrane, we evaluated its involvement in Rottlerin-induced autophagy. As shown in Figure 5(a), the MCF-7 cell line used in this study expresses Beclin-1 at very low levels, like many other MCF-7 subclones [22], and, most importantly, Rottlerin did not induce its expression in cells undergoing autophagic death. Moreover, although Rottlerin downregulated Bcl-2 (Figure 2), neither silencing nor overexpression of Bcl-2 leads to change in Rottlerin-induced LC3 I/II ratio (Figure 5(b)). Thus, regulation of Bcl-2 is just a parallel effect and has no functional role in Rottlerin-induced autophagy. Consistent with the Beclin-1 independency, 3-MA (5 mM), which inhibits the class III PI3K (Vps34)/Beclin-1 complex and thus autophagosome formation [30], did not affect LC3II generation when used both alone and in combination with Rottlerin for 6 h (Figure 5(c)).

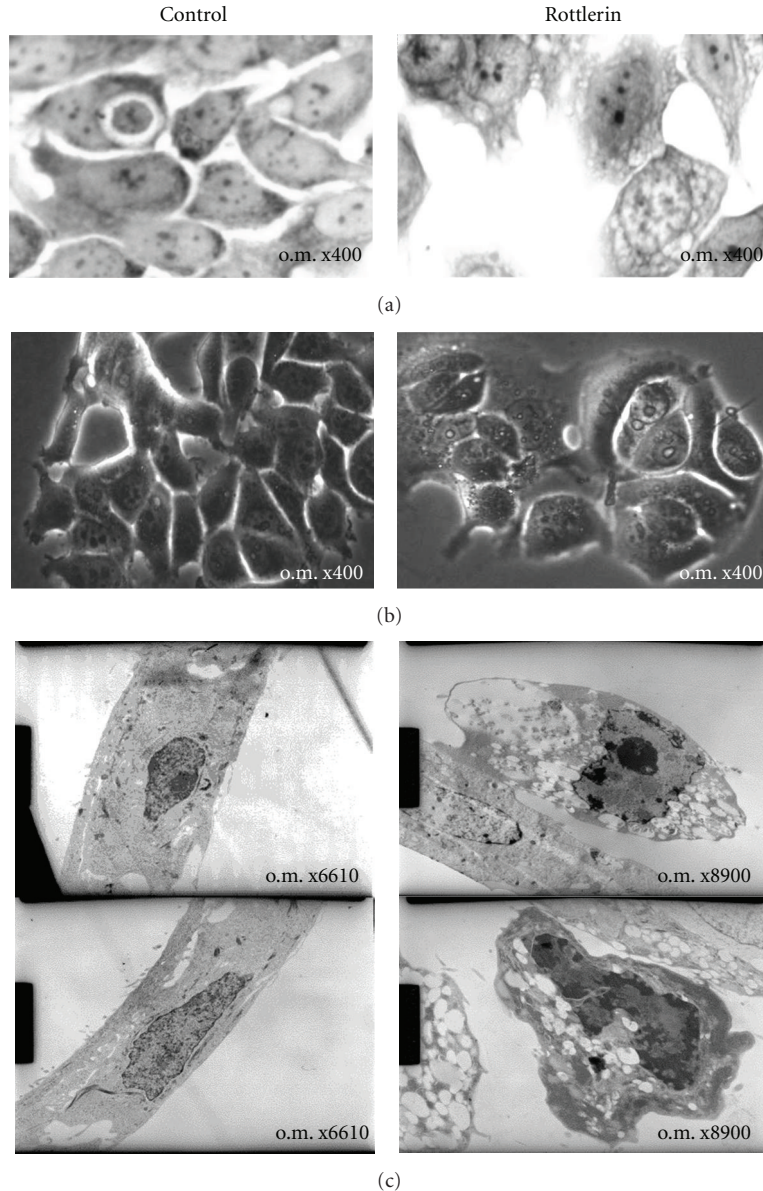


FIGURE 3: Rottlerin induced the cytoplasmic accumulation of multiple vacuole-like structures in MCF-7^{3def} cells. (a) Light microscopy images of Toluidine blue-stained cells; (b) phase contrast microscopy; (c) transmission electron microscopy images after a 24 h exposure to 20 μ M Rottlerin; control was treated with DMSO alone; o.m.: original magnification. Representative of three independent experiments.

3.5. Reexpression of Caspase 3 Restores Apoptotic Capacity in MCF-7. We preliminarily assessed the Rottlerin cytotoxicity in MCF-7^{3trans}. As shown in Figure 6(a), 20 μ M Rottlerin treatment for 18 and 24 h, time dependently, lowered the initial number of seeded cells to about 80 and 65%, respectively. As revealed by Hoechst 33342 staining (Figure 6(c)), most Rottlerin-treated cells showed nuclear clumps of condensed chromatin, indicative of apoptosis-like changes. Under phase contrast microscope, the Rottlerin-treated MCF-7^{3trans} cells showed additional apoptotic changes, such as cell rounding and shrinkage (Figure 6(b)). To provide further evidence that Rottlerin triggered an apoptotic pathway in MCF-7^{3trans} cells, the expressions of key apoptosis-related proteins were assessed. As shown in Figure 6(d), activation of caspases 9

and 3 and PARP cleavage were observed after 18 and 24 h of Rottlerin treatment, indicating that Rottlerin triggered the intrinsic apoptotic pathway in MCF-7^{3trans} cells. Moreover, a drop in Bcl-2 protein levels was found at 18 and 24 h time points, likely due to the Rottlerin inhibition of NF κ B. Furthermore, a modest increase in LC3-II was observed after Rottlerin exposure, indicating the onset of a weak autophagic program also in MCF-7^{3trans} cells.

4. Discussion

There is an increasing evidence that one of the major underlying defects in most cancers is an inhibition of normal

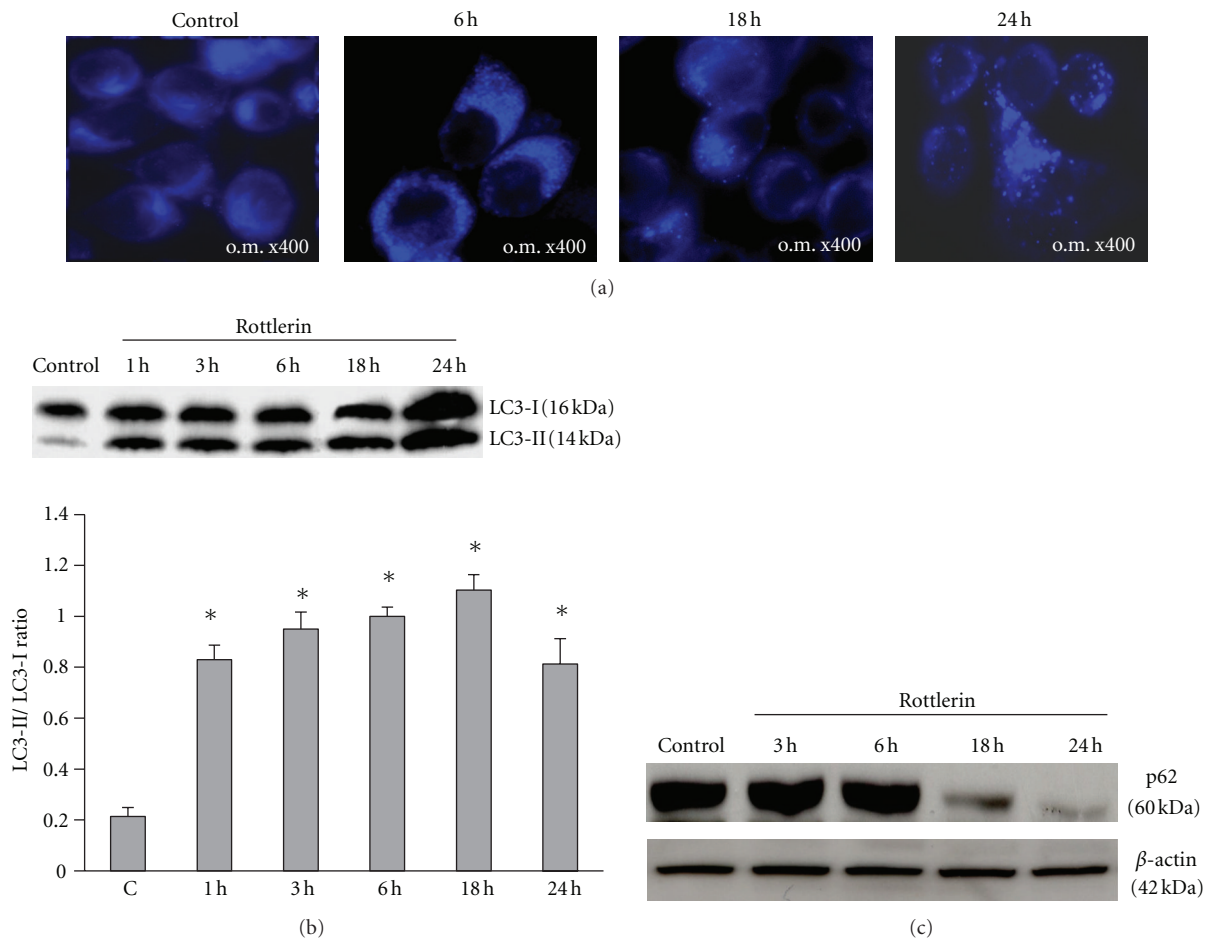


FIGURE 4: Vacuoles have reference to autophagy. (a) MDC staining of autophagosomes after $20 \mu\text{M}$ Rottlerin treatment for 6, 18, and 24 h; o.m.: original magnification; (b) western blotting analysis of the autophagosome marker LC3I-II after $20 \mu\text{M}$ Rottlerin treatment for 1–24 h and increased LC3-II/LC3-I ratio, calculated by densitometry; (c) autophagic clearance of SQSTM1/p62. β -actin was used as loading control. Representative of three independent experiments.

apoptosis. Resistance of cancer cells to apoptosis results in higher survival capacity and enhances the malignant potential of the tumor, allowing accumulation of mutations, favoring metastasis, and rendering cancer cells refractory to therapy and to host defenses.

Overexpression of survival molecules is often the cause of an intrinsic chemoresistance to multiple chemotherapeutic agents [31]. NF κ B is generally overexpressed in cancer, where the constitutive transcription of key molecules involved in cell cycle control, and apoptosis facilitates proliferation and survival of malignant cells [32]. NF κ B is indeed a transcription factor for cyclin D1, survivin, IAP1, IAP2, XIAP, Bcl-2, and many other regulatory molecules [33].

We have previously demonstrated that the MCF-7 breast cancer cells proliferation is strongly inhibited by Rottlerin, through a mechanism involving NF κ B inhibition and cyclin D1 downregulation [3].

Since NF κ B is considered an excellent target for anti-cancer therapy and its inhibition by Rottlerin has been also documented in human colon adenocarcinoma HT29 cells

[4], Rottlerin was expected to interrupt the process of cancer progression at multiple levels and in different cells.

We, firstly, verified that Rottlerin, in addition to arrest growth, actually kills MCF-7 cells. Although this cell line is known to be resistant to apoptosis, due to caspases 3 deficiency and Bcl-2 overexpression, Rottlerin exhibited a time- and dose-dependent cytotoxic effect with an IC₅₀ of approximately $20 \mu\text{M}$ after 24 h.

The next step was to evaluate the occurrence of apoptotic death, eventually caspases-3-independent. Despite a modest decrease in Bcl-2 protein expression, consistent with NF κ B inhibition, no clear signs of apoptosis were found in MCF-7^{3def} cells. In fact, caspase 9 cleavage was completely absent, and Hoechst 33342 staining failed to detect changes in nuclear morphology after Rottlerin exposure as long as 24 h. However, at 18 h and 24 h time points, an 85 KDa PARP fragment was detected by western blotting, likely generated by activated caspase 7 that, although unable to process caspase 9 and thus to propagate the caspase activation cascade, has been reported to efficiently cleave PARP [34].

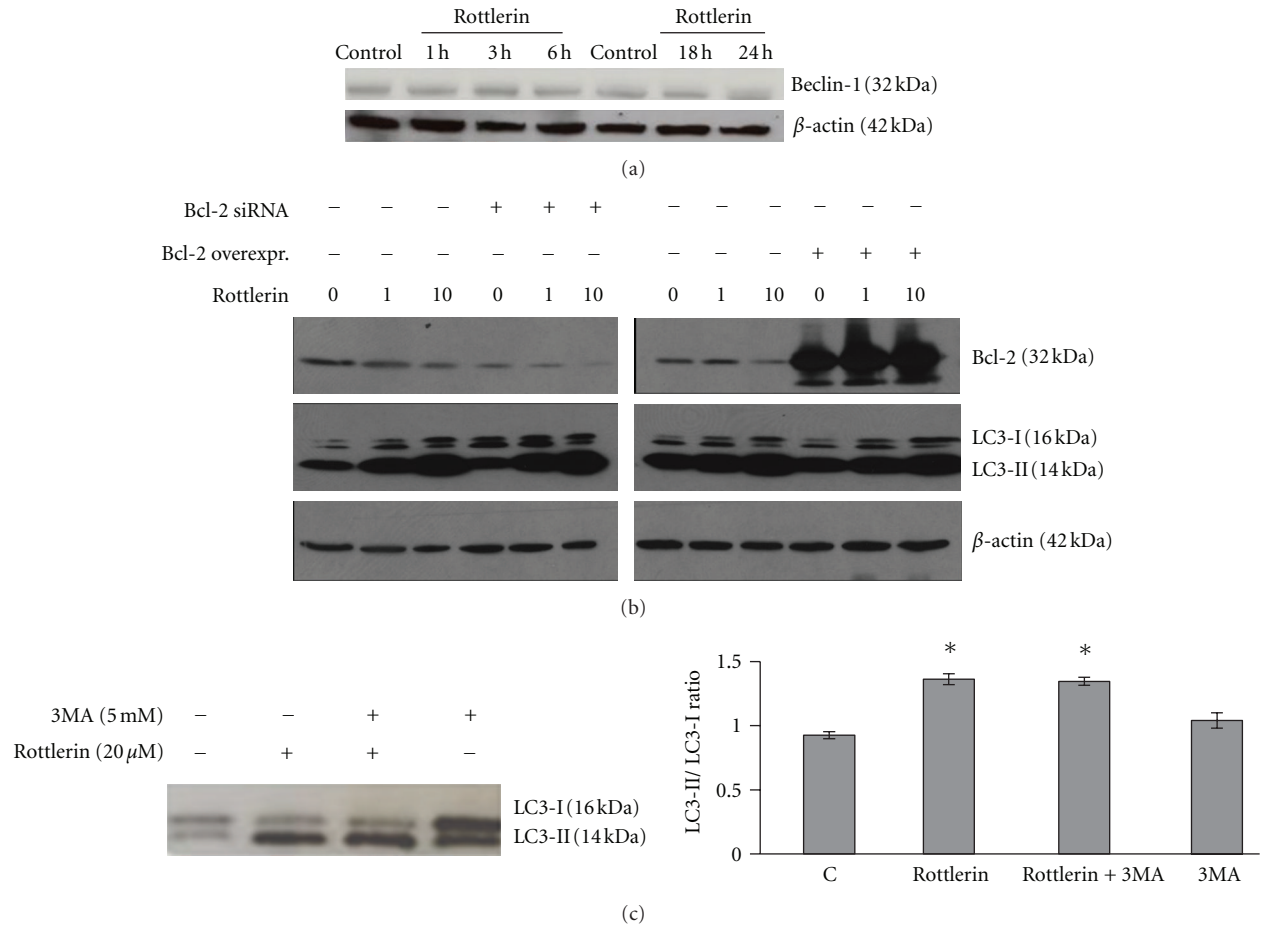


FIGURE 5: Rottlerin induced Bcl-2/Beclin-1-independent autophagic death in MCF-7^{3def} cells. (a) Western blotting analysis of Beclin-1 expression after 20 μ M Rottlerin treatment for 1–24 h. (b) Western blotting analysis of LC3 after 1–10 μ M of Rottlerin treatment for 24 h in Bcl-2-silenced and Bcl-2-overexpressing MCF-7^{3def} cells. (c) Western blotting analysis of LC3 after 20 μ M of Rottlerin treatment for 6 h, in the presence and absence of 5 mM 3-MA. β -actin was used as loading control. Representative of two independent experiments.

Additionally, the ultrastructural analysis showed alterations in chromatin structure after 24 h, suggesting that a late onset of apoptosis likely occurred in the few (roughly halved) survived MCF-7^{3def} cells.

On the other hand, dying cells showed early and extensive accumulation over time of cytoplasmic vacuoles, a hallmark of autophagy, following Rottlerin treatment. The evidence of their autophagosomal nature was confirmed by MDC labeling and western blotting of LC3, and the autophagic clearance was confirmed by western blotting of SQSTM1/p62.

The Bcl-2 protein, in addition to its antiapoptotic action, is also known to prevent cells from undergoing autophagy, by inhibiting the autophagy-promoting protein Beclin-1 [35]. Consistently, a previous study reported that Bcl-2 silencing by siRNA was sufficient to induce MCF-7 cells autophagic death [20]. However, we found that Rottlerin-induced autophagy is not due to Beclin-1 derepression following Bcl-2 downregulation, since Beclin-1 is neither expressed at significant levels nor induced by Rottlerin. In addition, Bcl-2 silencing or overexpression does not affect the

autophagic response to Rottlerin that occurs even at lower drug concentrations (1 and 10 μ M).

These results are fully consistent with the absolute irrelevance of the presence of 3-MA in the Rottlerin-induced conversion of LC3-I to LC3-II and, though indirectly, confirm that Beclin-1 does not play any role.

Furthermore, although Rottlerin has been recently reported to stimulate autophagy via inhibition of PI3K/Akt/mTOR pathway in pancreatic cancer stem cells [36], we exclude the possible negative regulation of Akt (and ERK) activity in Rottlerin-induced autophagy, since our previous study on Rottlerin-treated MCF-7 cells failed to reveal any change in the phosphorylation status of both kinases [3].

Overall, these findings indicate that an unusual autophagic pathway is triggered by Rottlerin in MCF-7 cells.

In order to clarify whether autophagy induction is the only strategy that Rottlerin adopts to kill MCF-7 cells, we exposed to Rottlerin an MCF-7 cell line, stable transfected with caspases 3. In this case, all the apoptotic features were present; in fact, cleavage of caspase 3, caspase 9 and PARP, cell rounding and shrinkage, and nuclear chromatin

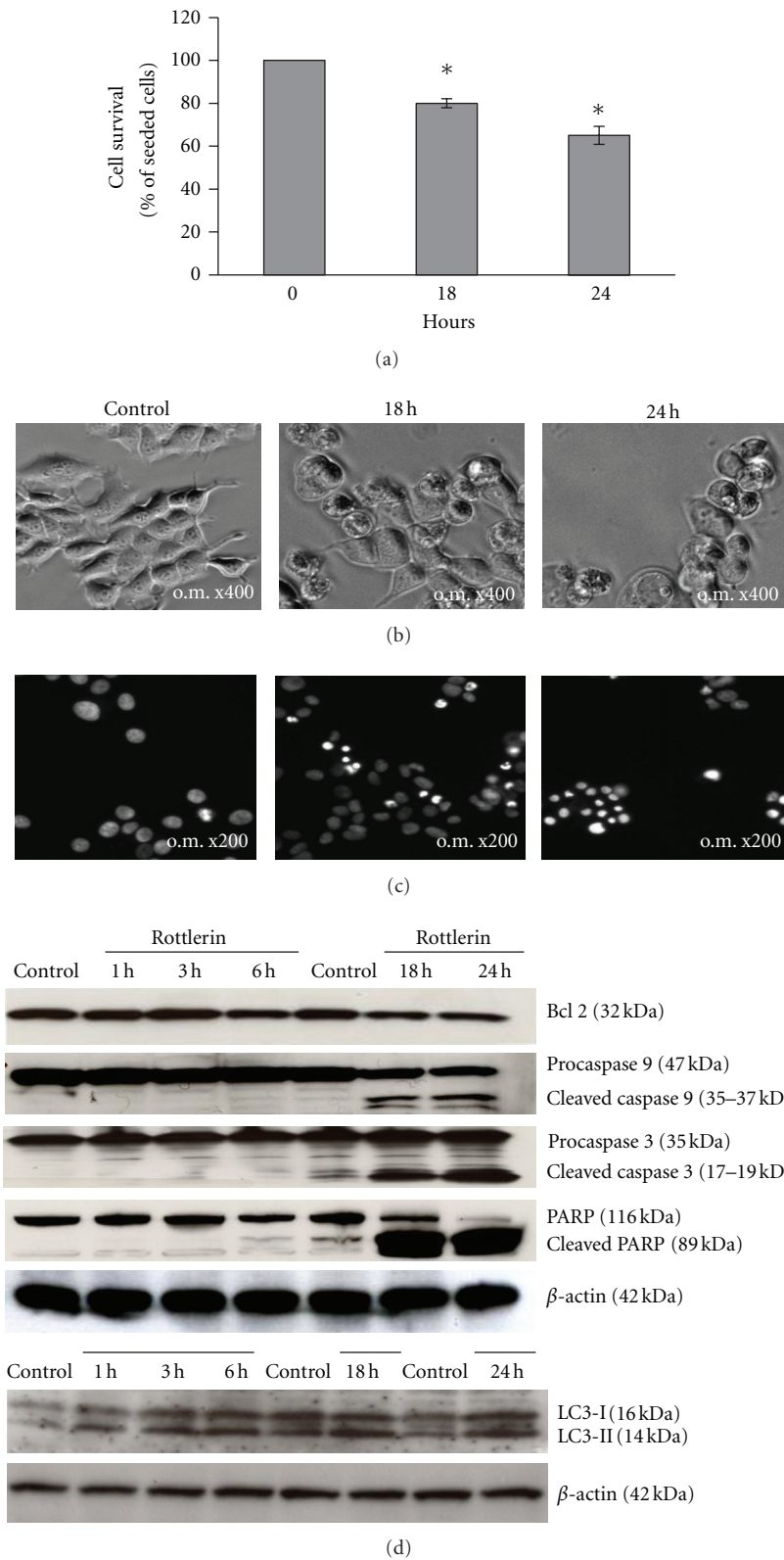


FIGURE 6: Morphological and biochemical features of apoptosis in Rottlerin-treated MCF-7^{trans} cells: (a) Cell survival expressed as % of seeded cells (control), evaluated by the SRB assay. (b) Phase-contrast microscopy and (c) Hoechst 33342 staining after 18 and 24 h of 20 μ M Rottlerin exposure; o.m.: original magnification. (d) Western blotting analysis of Bcl-2, caspases 9, caspases 3, PARP, and LC3-I-II after 20 μ M of Rottlerin treatment for 1–24 h. β -actin was used as a loading control. Representative of three independent experiments.

condensation occurred after 18–24 h of Rottlerin treatment. As judged from the modest increase in LC3II in the 3–24 h time course, a weak autophagic program was also activated in MCF-7^{3trans} cells, likely for survival and/or apoptosis delaying purposes. This is also suggested by the quite surprising finding of lowered cell death rate in the Rottlerin-treated MCF-7^{3trans} cells.

Our results are in partial agreement with a previous comparative study between MCF-7^{3def} and MCF-7^{3trans} cells, where Fenretinide, a synthetic derivative of retinoic acid, triggered autophagy in the former and apoptosis in the latter, thus confirming that, depending on their caspase-3 status, MCF-7 cells may switch between type II and type I PCD [37]. Fenretinide, however, strongly differs from Rottlerin in the mechanism of autophagy induction. Indeed, this drug, unlike Rottlerin, triggered the canonical autophagic death program by increasing Beclin-1 expression.

Conversely, another comparative study between MCF-7^{3def} and MCF-7^{3trans} cells has shown that the natural polyphenol resveratrol induced autophagic death in Beclin-1-silenced MCF-7^{3def} cells, suggesting that both Rottlerin and Resveratrol bypass the activity of Beclin-1 to activate autophagy in MCF-7 cells [38].

5. Conclusion

We have demonstrated that Rottlerin is capable of triggering caspase-dependent or autophagic, caspase-independent cell death in MCF-7 cells, depending on the functional availability of caspase 3.

While the apoptotic process appears to follow the classical mitochondrial pathway, the autophagic death, being Bcl-2, Beclin-1, Akt and ERK independent, appears to be triggered by noncanonical signaling cascades. Studies are in progress to reconstruct the chain of events from phenomenology to molecular mechanisms.

Nevertheless, the results of the current study suggest that the concept of Rottlerin as a multitarget anticancer drug could be generalized, beyond MCF-7 cells, for other cancer cell types, both apoptosis competent and apoptosis resistant. For an evidence-based application, however, further preclinical studies in cancer cells with different backgrounds are strongly demanded.

Conflict of Interests

The authors declare that there is no conflict of interests.

Acknowledgments

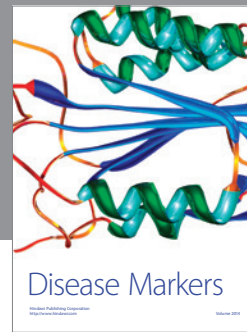
The authors thank Dr. R. U. Jänicke for kindly providing the caspases-3 stably transfected MCF-7 cells, Dr. K. Yamamoto for the kind gift of Bcl-2 plasmid, and Dr. C. Aldinucci, G. Belmonte and D. Franci for their technical support. This work is a part of an ongoing research project “Rottlerin repositioning: from folk medicine to modern perspectives in cancer therapy,” supported by the Istituto Toscano Tumori (ITT) Regione Toscana (grant 2010), by Grants

IGA MZD NT13573-4/2012, GA CR P301/12/P407 and by project FNUSA-ICRC (no. CZ.1.05/1.1.00/02.0123) from the European Regional Development Fund.

References

- [1] L. Moretti, E. S. Yang, K. W. Kim, and B. Lu, “Autophagy signaling in cancer and its potential as novel target to improve anticancer therapy,” *Drug Resistance Updates*, vol. 10, no. 4–5, pp. 135–143, 2007.
- [2] V. R. Patel, M. G. Patel, and R. K. Patel, “Development and validation of a RP-HPLC method for quantification of rottlerin in Kamala (*Mallotus philippinensis*),” *Drug Invention Today*, vol. 1, no. 2, pp. 116–118, 2009.
- [3] C. Torricelli, V. Fortino, E. Capurro et al., “Rottlerin inhibits the nuclear factor κ B/Cyclin-D1 cascade in MCF-7 breast cancer cells,” *Life Sciences*, vol. 82, no. 11–12, pp. 638–643, 2008.
- [4] E. Maioli, L. Greci, K. Soucek et al., “Rottlerin inhibits ROS formation and prevents NFB activation in MCF-7 and HT-29 cells,” *Journal of Biomedicine and Biotechnology*, vol. 2009, Article ID 742936, 7 pages, 2009.
- [5] G. Valacchi, A. Pecorelli, M. Mencarelli et al., “Rottlerin: a multifaced regulator of keratinocyte cell cycle,” *Experimental Dermatology*, vol. 18, no. 6, pp. 516–521, 2009.
- [6] G. Valacchi, A. Pecorelli, C. Sticozzi et al., “Rottlerin exhibits antiangiogenic effects in vitro,” *Chemical Biology and Drug Design*, vol. 77, no. 6, pp. 460–470, 2011.
- [7] J. Zhang, N. Liu, J. Zhang, S. Liu, Y. Liu, and D. Zheng, “PKC δ protects human breast tumor MCF-7 cells against tumor necrosis factor-related apoptosis-inducing ligand-mediated apoptosis,” *Journal of Cellular Biochemistry*, vol. 96, no. 3, pp. 522–532, 2005.
- [8] D. M. Tillman, K. Izeradjene, K. S. Szucs, L. Douglas, and J. A. Houghton, “Rottlerin sensitizes colon carcinoma cells to tumor necrosis factor-related apoptosis-inducing ligand-induced apoptosis via uncoupling of the mitochondria independent of protein kinase C,” *Cancer Research*, vol. 63, no. 16, pp. 5118–5125, 2003.
- [9] J. H. Lim, J. W. Park, K. S. Choi, Y. B. Park, and T. K. Kwon, “Rottlerin induces apoptosis via death receptor 5 (DR5) upregulation through CHOP-dependent and PKC δ -independent mechanism in human malignant tumor cells,” *Carcinogenesis*, vol. 30, no. 5, pp. 729–736, 2009.
- [10] U. Akar, B. Ozpolat, K. Mehta, J. Fok, Y. Kondo, and G. Lopez-Berestein, “Tissue transglutaminase inhibits autophagy in pancreatic cancer cells,” *Molecular Cancer Research*, vol. 5, no. 3, pp. 241–249, 2007.
- [11] A. D. Balgi, B. D. Fonseca, E. Donohue et al., “Screen for chemical modulators of autophagy reveals novel therapeutic inhibitors of mTORC1 signaling,” *PLoS ONE*, vol. 4, no. 9, Article ID e7124, 2009.
- [12] K. S. Song, J. S. Kim, E. J. Yun et al., “Rottlerin induces autophagy and apoptotic cell death through a PKC- δ -independent pathway in HT1080 human fibrosarcoma cells: the protective role of autophagy in apoptosis,” *Autophagy*, vol. 4, no. 5, pp. 650–658, 2008.
- [13] E. Maioli, C. Torricelli, and G. Valacchi, “Rottlerin and cancer: novel evidence and mechanisms,” *The Scientific World Journal*, vol. 2012, Article ID 350826, 11 pages, 2012.

- [14] E. Maioli, C. Torricelli, and G. Valacchi, "Rottlerin and curcumin: a comparative analysis," *Annals of the New York Academy of Sciences*, vol. 1259, pp. 65–76, 2012.
- [15] M. Gschwendt, H. J. Miller, and K. Kielbassa, "Rottlerin, a novel protein kinase inhibitor," *Biochemical and Biophysical Research Communication*, vol. 199, no. 1, pp. 93–98, 1994.
- [16] S. P. Davies, H. Reddy, M. Caivano, and P. Cohen, "Specificity and mechanism of action of some commonly used protein kinase inhibitors," *Biochemical Journal*, vol. 351, part 1, pp. 95–105, 2000.
- [17] S. I. Zakharov, J. P. Morrow, G. Liu, L. Yang, and S. O. Marx, "Activation of the BK (SLO1) potassium channel by mallotoxin," *The Journal of Biological Chemistry*, vol. 280, no. 35, pp. 30882–30887, 2005.
- [18] S. P. Soltoff, "Rottlerin: an inappropriate and ineffective inhibitor of PKC δ ," *Trends in Pharmacological Sciences*, vol. 28, no. 9, pp. 453–458, 2007.
- [19] R. U. Jänicke, "MCF-7 breast carcinoma cells do not express caspase-3," *Breast Cancer Research and Treatment*, vol. 117, no. 1, pp. 219–221, 2009.
- [20] U. Akar, A. Chaves-Reyez, M. Barria et al., "Silencing of Bcl-2 expression by small interfering RNA induces autophagic cell death in MCF-7 breast cancer cells," *Autophagy*, vol. 4, no. 5, pp. 669–679, 2008.
- [21] A. Kihara, Y. Kabeya, Y. Ohsumi, and T. Yoshimori, "Beclin-phosphatidylinositol 3-kinase complex functions at the trans-Golgi network," *EMBO Reports*, vol. 2, no. 4, pp. 330–335, 2001.
- [22] X. H. Liang, S. Jackson, M. Seaman et al., "Induction of autophagy and inhibition of tumorigenesis by beclin 1," *Nature*, vol. 402, no. 6762, pp. 672–676, 1999.
- [23] A. Kumar, J. Xu, S. Brady et al., "Tissue transglutaminase promotes drug resistance and invasion by inducing mesenchymal transition in mammary epithelial cells," *PLoS ONE*, vol. 5, no. 10, Article ID e13390, 2010.
- [24] F. Essmann, I. H. Engels, G. Totzke, K. Schulze-Osthoff, and R. U. Jänicke, "Apoptosis resistance of MCF-7 breast carcinoma cells to ionizing radiation is independent of p53 and cell cycle control but caused by the lack of caspase-3 and a caffeine-inhibitable event," *Cancer Research*, vol. 64, no. 19, pp. 7065–7072, 2004.
- [25] P. Skehan, R. Storeng, D. Scudiero et al., "New colorimetric cytotoxicity assay for anticancer-drug screening," *Journal of the National Cancer Institute*, vol. 82, no. 13, pp. 1107–1112, 1990.
- [26] A. Biederbick, H. F. Kern, and H. P. Elsasser, "Monodansylcadaverine (MDC) is a specific in vivo marker for autophagic vacuoles," *European Journal of Cell Biology*, vol. 66, no. 1, pp. 3–14, 1995.
- [27] K. Yamamoto, H. Ichijo, and S. J. Korsmeyer, "BCL-2 is phosphorylated and inactivated by an ASK1/Jun N-terminal protein kinase pathway normally activated at G2/M," *Molecular and Cellular Biology*, vol. 19, no. 12, pp. 8469–8478, 1999.
- [28] E. Maioli, C. Torricelli, V. Fortino, F. Carlucci, V. Tommassini, and A. Pacini, "Critical appraisal of the MTT assay in the presence of Rottlerin and uncouplers," *Biological Procedures Online*, vol. 11, no. 1, pp. 227–240, 2009.
- [29] Y. Kabeya, N. Mizushima, T. Ueno et al., "LC3, a mammalian homologue of yeast Apg8p, is localized in autophagosomal membranes after processing," *The EMBO Journal*, vol. 19, no. 21, pp. 5720–5728, 2000.
- [30] A. Petiot, E. Ogier-Denis, E. F. C. Blommaert, A. J. Meijer, and P. Codogno, "Distinct classes of phosphatidylinositol 3'-kinases are involved in signaling pathways that control macroautophagy in HT-29 cells," *The Journal of Biological Chemistry*, vol. 275, no. 2, pp. 992–998, 2000.
- [31] J. L. Luo, H. Kamata, and M. Karin, "IKK/NF- κ B signaling: balancing life and death—a new approach to cancer therapy," *The Journal of Clinical Investigation*, vol. 115, no. 10, pp. 2625–2632, 2005.
- [32] T. Banno, A. Gazel, and M. Blumenberg, "Pathway-specific profiling identifies the NF- κ B-dependent tumor necrosis factor α -regulated genes in epidermal keratinocytes," *The Journal of Biological Chemistry*, vol. 280, no. 19, pp. 18973–18980, 2005.
- [33] M. Karin, "Nuclear factor- κ B in cancer development and progression," *Nature*, vol. 441, no. 7092, pp. 431–436, 2006.
- [34] J. G. Walsh, S. P. Cullen, C. Sheridan, A. U. Lüthi, C. Gerner, and S. J. Martin, "Executioner caspase-3 and caspase-7 are functionally distinct proteases," *Proceedings of the National Academy of Sciences of the United States of America*, vol. 105, no. 35, pp. 12815–12819, 2008.
- [35] S. Pattingre, A. Tassa, X. Qu et al., "Bcl-2 antiapoptotic proteins inhibit Beclin 1-dependent autophagy," *Cell*, vol. 122, no. 6, pp. 927–939, 2005.
- [36] B. N. Singh, D. Kumar, S. Shankar, and R. K. Srivastava, "Rottlerin induces autophagy which leads to apoptotic cell death through inhibition of PI3K/Akt/mTOR pathway in human pancreatic cancer stem cells," *Biochemical Pharmacology*, vol. 84, no. 9, pp. 1154–1163, 2012.
- [37] B. Fazi, W. Bursch, G. M. Fimia et al., "Fenretinide induces autophagic cell death in caspase-defective breast cancer cells," *Autophagy*, vol. 4, no. 4, pp. 435–441, 2008.
- [38] F. Scarlatti, R. Maffei, I. Beau, P. Codogno, and R. Ghidoni, "Role of non-canonical Beclin 1-independent autophagy in cell death induced by resveratrol in human breast cancer cells," *Cell Death and Differentiation*, vol. 15, no. 8, pp. 1318–1329, 2008.



Hindawi

Submit your manuscripts at
<http://www.hindawi.com>

