

Research Article

Mitigating Nitrous Oxide Emissions from Tea Field Soil Using Bioaugmentation with a *Trichoderma viride* Biofertilizer

Shengjun Xu,¹ Xiaoqing Fu,² Shuanglong Ma,¹ Zhihui Bai,¹
Runlin Xiao,² Yong Li,² and Guoqiang Zhuang¹

¹ Research Center for Eco-Environmental Sciences, Chinese Academy of Sciences, Beijing 100085, China

² Institute of Subtropical Agriculture, Chinese Academy of Sciences, Changsha 410125, China

Correspondence should be addressed to Zhihui Bai; zhbai@rcees.ac.cn and Guoqiang Zhuang; zhxu63@sina.com

Received 25 November 2013; Accepted 5 February 2014; Published 6 April 2014

Academic Editors: H. M. Baker, C. Cameselle, G. El-Chaghaby, and C. Waterlot

Copyright © 2014 Shengjun Xu et al. This is an open access article distributed under the Creative Commons Attribution License, which permits unrestricted use, distribution, and reproduction in any medium, provided the original work is properly cited.

Land-use conversion from woodlands to tea fields in subtropical areas of central China leads to increased nitrous oxide (N₂O) emissions, partly due to increased nitrogen fertilizer use. A field investigation of N₂O using a static closed chamber-gas chromatography revealed that the average N₂O fluxes in tea fields with 225 kg N ha⁻¹ yr⁻¹ fertilizer application were 9.4 ± 6.2 times higher than those of woodlands. Accordingly, it is urgent to develop practices for mitigating N₂O emissions from tea fields. By liquid-state fermentation of sweet potato starch wastewater and solid-state fermentation of paddy straw with application of *Trichoderma viride*, we provided the tea plantation with biofertilizer containing 2.4 t C ha⁻¹ and 58.7 kg N ha⁻¹. Compared to use of synthetic N fertilizer, use of biofertilizer at 225 kg N ha⁻¹ yr⁻¹ significantly reduced N₂O emissions by 33.3%–71.8% and increased the tea yield by 16.2%–62.2%. Therefore, the process of bioconversion/bioaugmentation tested in this study was found to be a cost-effective and feasible approach to reducing N₂O emissions and can be considered the best management practice for tea fields.

1. Introduction

Three typical land-uses occur in most areas of southern subtropical China: woodlands in the mountains, uplands on slopes, and paddy fields in the lowlands [1]. In China, 1.3 M ha of tea plantations has been established during the last 50 yrs., due to rapid economic development [2]. Most of these recent plantations occupy large areas that were originally woodlands and are continuing to expand [3]. Land-use conversion is typically characterized by frequent tillage and use of large amounts of nitrogenous fertilizer, which contributes significantly to losses of N as nitrous oxide (N₂O) emissions to the atmosphere [4]. N₂O emissions are, on average, >10 times higher from tea fields than from forests. N₂O has an ozone-depleting potential similar to that of hydrochlorofluorocarbons and a global warming potential 300 times that of CO₂ [3, 5, 6].

In China, annual production of rice straw was about 1.74 × 10⁸ t in 2000, containing about 2.5 – 4.0 × 10⁴ t N [7]. Due to lack of feasible conversion technologies, until the

2000s, on-site burning was traditionally used to dispose of crop residues, resulting in severe environmental pollution including greenhouse gases and nitrogen oxides [8]. Recently, straw return has become the preferred method of rice straw disposal because of its positive effects on crop yield and soil properties, such as increased soil organic carbon content. However, straw decomposition in soils takes time; over the short-term decomposition, straw incorporation can hamper crop root penetration, causing N deficiencies and contributing to disease and weed problems [9, 10], directly limiting its application in agriculture. Therefore, it is important to develop a method for enhancing straw decomposition before or after incorporation.

Many studies have attempted to hasten straw decomposition via microbial processes. *Trichoderma* spp. is the best-known cellulolytic fungi that can accelerate the process of rice straw decomposition and produce more soil-available nutrients such as labile organic matter and inorganic N/P/S [11–13]. However, a major challenge in implementing bioconversion of rice straw is identifying a suitable carrier substrate to

amplify the target organism, promote survival of *Trichoderma* spp. in the rice straw, and enhance colonization in the soil near plant roots. Fortunately, sweet potato starch wastewater (SPSW) from local starch production plants could be used as an appropriate culture medium for microbial growth because of its high organic content. A few studies have been published on production of microbial biomass through starch industry wastewater with various microbes such as *Trichoderma viride* [14].

Compared to chemical fertilizers and protectants, some strains of *Trichoderma* spp. provide additional benefits in terms of plant growth and productivity, such as systemic resistance to disease and abiotic stresses such as water deficits and salt stress [15, 16]. If *Trichoderma* spp. colonize the roots, they strongly affect plant physiology by changing plant gene expression, providing season-long benefits to the plants [17, 18]. Another major benefit is induction of increased N use efficiency (NUE) in plants [19], potentially reducing the N fertilizer application rate by 30%–50% through bioconversion/bioaugmentation with no reduction in yield. Therefore, the lower N inputs to soil and higher NUE may reduce N₂O emissions.

The objectives of this study were to (1) develop a cost-effective technology for using SPSW and rice straw for large-scale production of *Trichoderma viride* biofertilizer, (2) evaluate the feasibility of biofortification of crops through application of *T. viride* N fertilizers to reduce N₂O emissions, and (3) minimize synthetic N fertilizer input via recycling of N to achieve a sustainable agricultural system.

2. Methods and Materials

2.1. Site Description. The field experiment was carried out at the Changsha Research Station for Agricultural and Environmental Monitoring (CRSAEM), Changsha, Hunan, in subtropical central China (28°32'50"N, 113°10'58"E). The region has a subtropical monsoon climate with a mean annual air temperature of 17.5°C and a mean annual precipitation of 1330 mm (1979–2010). The red soils of this area are classified as ultisols (USDA soil taxonomy) [20]. The selected site is a typical hilly, agricultural catchment with pine forests (woodlands), paddy fields (lowland), and tea fields (upland) as the three primary land-use types, accounting for 65.5, 25.1, and 3.4% of the total catchment area (135 km², Figure 1), respectively. The other small upland areas in the catchment are cropped sweet potato (<0.5%). The land-use distribution in 1990 shows substantial conversion from woodlands dominated by Masson pine and bamboo to large-scale tea plantations (*Camellia sinensis* L., Figure 1). Each land-use type is fertilized other than the woodlands. The average annual application rate of N fertilizers was 450, 300, and 250 kg N ha⁻¹ yr⁻¹ for tea fields, paddy fields, and sweet potato fields, respectively.

2.2. Preparation of Biofertilizer

2.2.1. Raw Materials and Starter Inoculum. SPSW, containing approximately 25 g L⁻¹ COD and 1 g L⁻¹ total N, was obtained

from a local sweet potato starch production company (Xiangfeng Corp., Hunan, China) as a by-product of sweet potato starch processing. Rice straw (total organic carbon (TOC), 56.5%; total nitrogen (TN), 0.46%) was collected after harvest from local paddy fields and ground to 5–8 mm lengths for the solid fermentation culture of *Trichoderma viride*.

The strain *T. viride* EBL13 was isolated from the soil and was found to be active against phytopathogenic fungi in our laboratory [21]. The starter cultures were obtained by inoculating 500 μL of a spore suspension at 10⁸ spores mL⁻¹ into 20 mL potato dextrose broth (PDB; Sigma-Aldrich, St. Louis, MO) and incubating at 25°C in orbital agitation at 150 rpm in the dark for 48 h.

2.2.2. Mass Production of *T. viride* Mycelium. The starter cultures (2 mL) were transferred to a 500-mL Erlenmeyer flask containing 150 mL sterile sweet starch industry wastewater (121 ± 1°C for 15 min) and were incubated in a rotary shaker at 28 ± 1°C and 200 ± 5 rpm for 48 h. The mycelium was collected by centrifugation at 4000 g for 10 min, the biomass fresh weight was determined, and then the fungal biomass was prepared for solid-state fermentation (SSF) with rice straw.

2.2.3. Production of Biofertilizer by Solid-State Fermentation. The homogenized mycelial mat (10 g dewatered mycelium with 10 mL fermentation supernatant) was transferred to a 500-mL Erlenmeyer flask containing 10 g sterile rice straw (121 ± 1°C for 15 min). Afterwards, the flasks were incubated at 28 ± 1°C for 148 h until mass production of *T. viride* conidia occurred. The conidia concentration was measured as cfu g⁻¹ air-dried cotton stalk substrate, using a modified conidia assessment method [22].

2.3. Biofertilizer Application to the Tea Plantation. Biofertilizer was compared with chemical fertilizer (N) using a completely randomized design in an ongoing trial of about 3-year-old tea (*Camellia sinensis* cv.) from November 2010 to May 2012 at a tea plantation in Jinjing. There were four treatments in the field experiment: (1) unfertilized (CK0), (2) chemical fertilizer (CNH450, urea applied at 450 kg N ha⁻¹ yr⁻¹; CNL225, fertilizer applied at 225 kg N ha⁻¹ yr⁻¹), (3) biofertilizer (BFH225, biofertilizer applied at 50000 kg ha⁻¹ yr⁻¹, with the total N adjusted to that of CNL225; BFL113, biofertilizer applied at 25000 kg ha⁻¹ yr⁻¹, with the total N adjusted to half that of CNL225), and (4) raw materials (RMH225, sweet starch industry wastewater and rice straw at 50000 kg ha⁻¹ yr⁻¹ for fermentation of biofertilizer; RML113, sweet starch industry wastewater and rice straw at 25000 kg ha⁻¹ yr⁻¹). The fertilizer was applied in three stages each year: 20% of the total N on November 12, 60% on March 1, and 20% on October 1, tilled 10–15 cm under the soil surface. The experimental plot was 60 m² (10 × 6 m²) for each fertilizer treatment.

2.4. Field Measurement of N_2O Fluxes. Soil N_2O fluxes were measured using a static closed chamber and gas chromatography (GC), as described by Li et al. [3] and Zheng et al. [23], from March 2011 to April 2012. The closed mini-chambers were constructed of polyvinylchloride, 0.15 m in diameter and 0.18 m in length, with sharpened ends and screw lids fitted with rubber septa for gas sampling. The chambers were gently inserted vertically into the soil to a depth of 0.05 m using the sharpened ends. Headspace gas samples were collected from 09:30 to 10:30 a.m. once a week during tea harvest seasons (spring tea: mid-March to mid-April; autumn tea: mid-September to mid-October). For each treatment, 3 replicate gas samples were collected from the headspace into preevacuated 12-mL vials (Exetainers, Labco, High Wycombe, UK) 0 and 30 min after the lid was closed. After gas sampling, the air temperature in each chamber was measured for subsequent correction of the flux calculation. The N_2O concentrations in the gas samples were analyzed using a gas chromatograph (Agilent 7890A, Agilent, Santa Clara, CA) fitted with a ^{63}Ni -electron capture detector and an automatic sample injector system [3]. N_2O fluxes ($FLUX_{30}$, $g N ha^{-1} d^{-1}$) were calculated using the following equation:

$$FLUX_{30} = (c_{30} - c_0) \cdot \frac{M_{N_2O}}{V_0} \cdot \frac{h}{\Delta t} \cdot \frac{T_0}{T_0 + T_{air}} \cdot \frac{10000}{1000} \cdot 24 \cdot \frac{2 \cdot M_N}{M_{N_2O}} \quad (1)$$

where $c_{30} - c_0$ is the difference in the N_2O concentration in the headspace of the mini-chamber 0 and 30 min after the lid was closed (ppmv); M_{N_2O} is the molecular weight of N_2O ($g mol^{-1}$); V_0 is the molecular volume of N_2O under standard conditions (temperature = 273 K and pressure = 1013 hPa), $22.4 \times 10^{-3} m^3$; $T_0 = 273 K$; M_N is the atomic weight of nitrogen ($g mol^{-1}$); h is the chamber height (m); Δt is the incubation period (0.5 h); T_{air} is the air temperature inside the mini-chamber ($^{\circ}C$); and 10,000, 1000, and 24 are conversion factors for m^2 to ha, mg to g, and h to days, respectively.

2.5. Auxiliary Field Measurements. In addition to measuring gas fluxes, ammonium-N and nitrate-N in the soil were measured along with tea plant growth. Four 0–20 cm soil samples were collected from random locations in each plot using a soil auger during each field measurement of N_2O fluxes. Each fresh soil sample was manually homogenized and analyzed for soil ammonium-N (NH_4^+ -N), nitrate-N (NO_3^- -N), and total N using an automated flow injection analyzer (FIAStar 5000, Foss Tecator, Hoganas, Sweden) as described by Liu et al. [24]. Tea plant growth was monitored by recording the weight of a fresh tea bush (bud with two leaves) during the tea harvest seasons (spring tea: mid-March to mid-April; autumn tea: mid-September to mid-October).

2.6. Statistical Analyses. All statistical analyses were conducted using SPSS 12.0 (SPSS China, Beijing, China) and Origin 8.0 (Origin Lab Ltd., Guangzhou, China). The statistical significance of the results was determined using Duncan's

multiple-range test ($P < 0.05$). Simple correlation coefficients between soil N_2O flux and NH_4^+ -N and NO_3^- -N contents were calculated using the same statistical package.

3. Results and Discussion

3.1. Effects of Land-Use Changes on N_2O Emissions from Hilly Areas of Subtropical Central China. Figure 1 depicts changes in land-use distribution patterns using a geographic information system since 1955. In the late 1950s, the land-use pattern was simple and mainly comprised of woodlands and paddy fields with 63.05 and 29.38% of the total land, respectively. With rapid economic development and population increases, rapid land-use and land-cover changes have taken place in these areas beginning in the 1990s; there has been a large decline in forest cover due to tea plantation expansion. Overall, 398 ha of woodland areas has been converted to tea crop cultivation, about 2.98% of the total area of the district. Woodland cover (60.3%) has decreased by 4.30% compared to 1955. By 2012, tea plantation land had expanded to 3.42% of the total area of the district, a marked increase of 15.2% from 1990 to 2012.

Under the typical fertilization model for tea plantations, N_2O fluxes associated with high-N treatment ($450 kg N ha^{-1} yr^{-1}$) in the spring and autumn of 2011 and the spring of 2012 were 24.8–49.0, 15.2–40.2, and 28.6–37.6 $g N ha^{-1} d^{-1}$, respectively. For low-N fertilization ($225 kg N ha^{-1} yr^{-1}$), N_2O fluxes during the same periods were 6.77–18.4, 13.5–28.2, and 10.7–15.2 $g N ha^{-1} d^{-1}$, respectively. However, for woodlands in the same district, N_2O fluxes during the same periods were -8.21 – 11.1 , 0.85 – 2.12 , and 1.99 – $2.39 g N ha^{-1} d^{-1}$, respectively. Therefore, the N_2O fluxes from tea plantations with high-N ($450 kg N ha^{-1} yr^{-1}$) and low-N ($225 kg N ha^{-1} yr^{-1}$) application were 17.7 ± 3.4 and 9.4 ± 6.2 times higher than those from woodlands, respectively. Many studies have reported that land-use changes can impact N_2O emissions and that N_2O emissions significantly increase when woodlands are converted into pastures [25], orchards [26], or cropland [27]. Merino et al. [28] measured N_2O releases from cropland and a pasture (7.40 and $13.15 g N ha^{-1} d^{-1}$) and found that they were 3 and 6 times higher than those from a forest ($2.19 g N ha^{-1} d^{-1}$), respectively. We have previously reported the high annual variability of N_2O emissions as well as its spatial variability and distribution from a tea field in 2010 [3, 29]. Many studies have shown that agricultural land has much higher N_2O emissions than forests because of generally higher N in soils that may be further enhanced through intensification of the N cycle through application of synthetic N fertilizer [30, 31].

3.2. Bioconversion of Sweet Potato Starch Wastewater and Rice Straw into Biofertilizer by *Trichoderma viride*. In the studied catchment, paddy fields accounting for 25.1% of the total land area produced $3.02 \times 10^4 t yr^{-1}$ straw containing $9.07 \times 10^3 t C$ and $1.21 \times 10^2 t N$ (Table 1). Sweet potatoes were cultivated in the upland area, making up 0.25% of the total land area of the catchment. The sweet potatoes were processed to produce

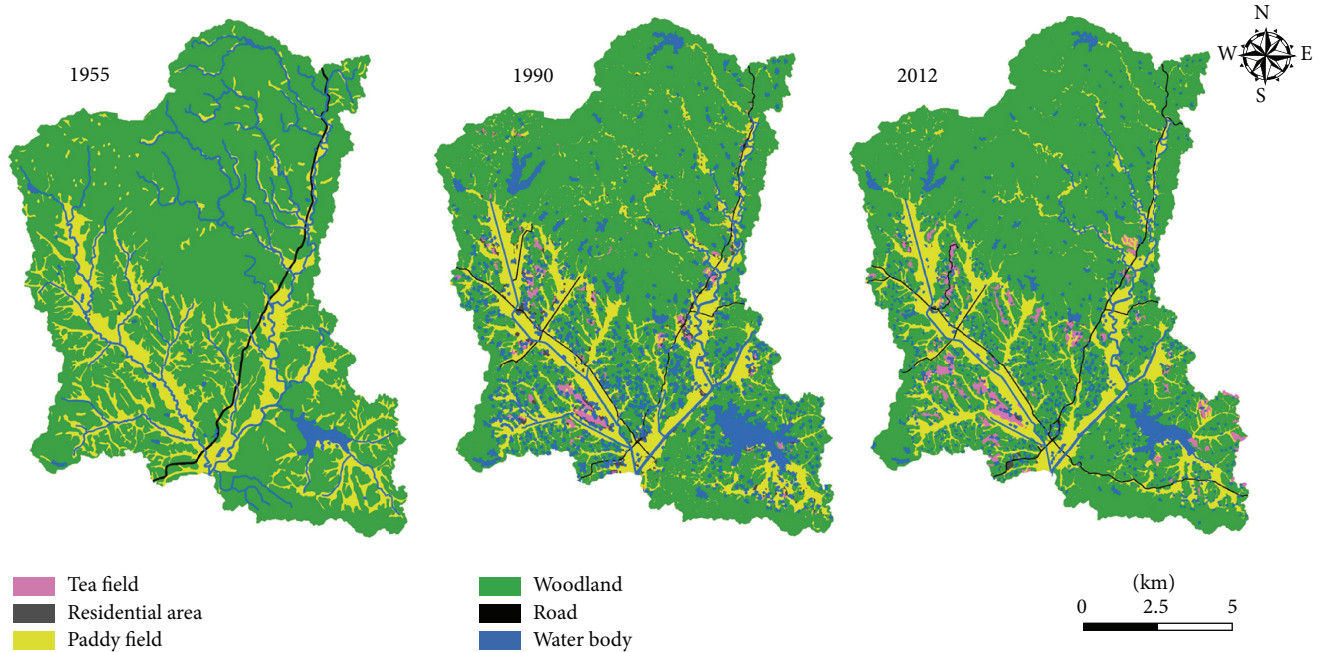


FIGURE 1: Land-use distributions during 1955–2012.

TABLE 1: Process parameters for bioconversion of SPSW and rice straw into biofertilizer by *T. viride*.

Parameters	Raw materials		<i>T. viride</i> Mycelium	Biofertilizer
	Rice straw	SPSW		
Water content (%)	5.3	97.8	81	48.3
Total organic carbon (%)	56.5	2.1	14.4	18.4
Total nitrogen (%)	0.4	0.08	0.65	0.45
Dry mycelium weight (g L ⁻¹)	—	—	8.96	—
Conidia concentration (cfu g ⁻¹)	—	—	—	3.2×10^{10}

Note: “—” means not test.

150 t yr⁻¹ refined starch, during which about 1.2×10^4 t SPSW was produced containing 252 t C and 9.6 t N (Table 1). The SPSW was found to be suitable for cultivation of *T. viride*, with a dry mycelium weight of about 8.96 g L⁻¹. About 73.6% of the C and 81.3% of the N in the wastewater were transferred into the mycelium. To optimize conditions and enhance straw decomposition, the mass *T. viride* mycelium was mixed with rice straw by solid-state fermentation to produce biofertilizer with a maximum conidia concentration of 3.2×10^{10} cfu g⁻¹. By liquid-state fermentation of the SPSW and solid-state fermentation of the paddy straw, the tea plantation can be provided with 1.1×10^3 t C yr⁻¹ and 27.0 t N yr⁻¹ or 2.4 t C ha⁻¹ yr⁻¹ and 58.7 kg N ha⁻¹ yr⁻¹ over the 460 ha catchment area (calculated from Table 1). Harman reported that *Trichoderma* strains can stabilize soil nutrients, enhance nutrient uptake, promote root development, increase root hair formation, and induce systemic resistance to biotic stresses (diseases) and abiotic stresses (water deficits) [15, 16, 18, 21]. The biological activity of *Trichoderma* spp. could replace some functions of synthetic nitrogen to minimize synthetic inputs of fertilizer in tea cultivation.

3.3. Mitigation Options for Reducing N₂O Emissions. Table 2 and Figure 2 show that application of synthetic N fertilizer significantly increased tea yields and also N₂O emissions compared to unfertilized fields. Addition of synthetic N fertilizer as CNL225 and CNL450 increased the average tea yields by 9.1% and 39.6% (spring tea, 2011), 39.9% and 111.8% (autumn tea, 2011), and 64.2% and 103.3% (spring tea, 2012), respectively, compared to the unfertilized treatment (CK0). At the same time, fluxes of N₂O were significantly affected by the rate of synthetic N fertilization. Based on measurements in 2011–2012, the fertilization treatments CNL225 and CNL450 significantly stimulated N₂O emissions by 849% and 2881% (spring tea, 2011), 3686% and 4731% (autumn tea, 2011), and 3889% and 10250% (spring tea, 2012), respectively. These results are consistent with those of previous studies indicating that nitrogen fertilizer application enhances emissions of N₂O from agricultural fields [26, 32–34]. In addition, the magnitude of the N₂O emissions from our tea fields was much higher than previously reported values for paddy fields and uplands with N fertilization. Accordingly, it is urgent to establish technologies and management practices

TABLE 2: Productivity of tea fields (fresh tea, kg ha⁻¹) with various fertilizer treatments, 2011-2012.

Treatment	2011 spring tea (kg ha ⁻¹)			2011 autumn tea (kg ha ⁻¹)			2012 spring tea (kg ha ⁻¹)		
	March 5	March 12	March 19	October 15	October 22	October 29	April	April 8	April 15
CK0	125.4 ± 15.6 ^a	306.6 ± 11.2 ^a	377.3 ± 35.4 ^a	269.8 ± 15.9 ^a	255.4 ± 65.4 ^a	231.4 ± 45.3 ^a	207.2 ± 10.9 ^a	285.9 ± 49.9 ^a	508.2 ± 54.4 ^a
RMH225	169.6 ± 23.8 ^{bc}	347.3 ± 51.9 ^{ab}	545.8 ± 49.6 ^c	413.4 ± 14.6 ^{bc}	371.2 ± 24.8 ^{bc}	313 ± 37.0 ^b	289.5 ± 16.3 ^a	301.7 ± 36.9 ^{ab}	457.8 ± 36.3 ^a
RML113	137.9 ± 21.3 ^{ab}	239.2 ± 41.5 ^{ab}	394.7 ± 40.3 ^a	355.5 ± 28.3 ^b	318.9 ± 28.3 ^b	292.6 ± 19.6 ^{ab}	255.9 ± 57.2 ^a	268.7 ± 55.5 ^{ab}	468.7 ± 13.7 ^a
BFH225	202.9 ± 40.7 ^c	426.3 ± 74.0 ^b	784.5 ± 44.6 ^d	620.3 ± 39.6 ^d	587.4 ± 43.3 ^d	463.5 ± 39.1 ^c	400.4 ± 24.9 ^c	528.4 ± 87.0 ^c	783.9 ± 147.7 ^b
BFL113	142.2 ± 12.5 ^{ab}	292.7 ± 9.5 ^{ab}	521.4 ± 31.2 ^{bc}	453.9 ± 34.7 ^c	387.5 ± 8.3 ^c	327.1 ± 34.7 ^b	282.3 ± 54.9 ^a	364.6 ± 40.2 ^b	573.5 ± 34.7 ^{ab}
CNH450	202.0 ± 4.9 ^c	349.3 ± 45.9 ^{ab}	542.1 ± 16.8 ^c	575.5 ± 62.5 ^d	532.9 ± 30.5 ^d	494 ± 46.0 ^c	530.3 ± 37.9 ^c	633.5 ± 27.7 ^c	672.7 ± 121.3 ^b
CNL225	145.6 ± 12.4 ^{ab}	309.3 ± 56.9 ^{ab}	416.6 ± 30.2 ^{ab}	388.8 ± 67.0 ^{bc}	350.3 ± 4.4 ^{bc}	320.3 ± 36.9 ^b	448 ± 34.3 ^b	487.2 ± 22.8 ^b	538.9 ± 45.3 ^{ab}

Note: in each row, means followed by the same letter are not significantly different at $P < 0.05$.

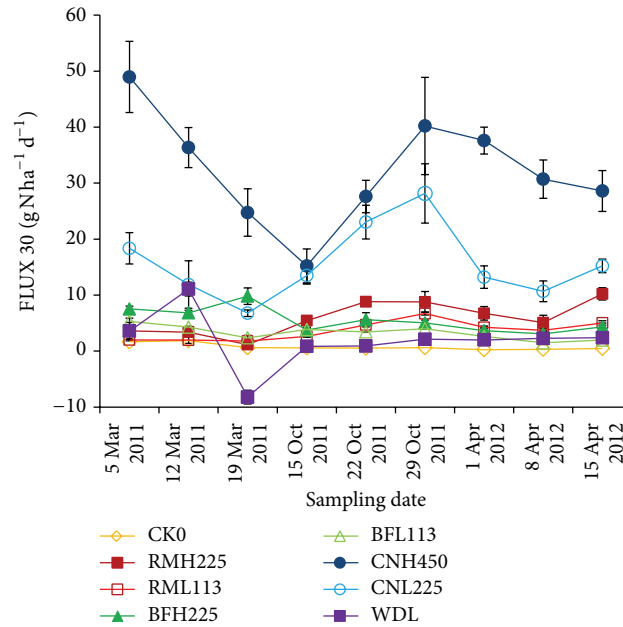


FIGURE 2: Variations in soil N₂O flux in tea fields during 2011-2012 (CK0: unfertilized; RMH225: raw materials applied at 225 kg N ha⁻¹ yr⁻¹; RMH113: raw materials applied at 113 kg N ha⁻¹ yr⁻¹; BFH225: biofertilizer applied at 225 kg N ha⁻¹ yr⁻¹; BFL113: biofertilizer applied at 113 kg N ha⁻¹ yr⁻¹; CNH450: urea applied at 450 kg N ha⁻¹ yr⁻¹; and CNH225: urea applied at 225 kg N ha⁻¹ yr⁻¹, WDL-woodland).

for mitigating N₂O emissions from tea fields while sustaining or increasing tea production.

Improved management using biofertilizer instead of synthetic N fertilizer significantly decreased N₂O emissions (Figure 2). The BFH225 treatment reduced N₂O emissions by 33.3%–71.8% and increased the tea yield by 16.2%–62.2% compared to the CNL225 treatment, depending on the season. The RMH225 treatment also reduced N₂O emissions by 43.6%–80.0%; however, the yield of 2012 spring tea decreased and some tea plants died. There have been contradictory reports on the effects of organic waste materials on N₂O emissions. Some studies have shown an inhibitory effect [35–37], while others have reported stimulation [38, 39]. Based on our results, direct application of the organic waste materials (rice straw and starch industry wastewater) to the tea field carried significant risks to the tea plants. However, transferring these waste materials into biofertilizer by fermentation was a feasible approach for decreasing N₂O fluxes from tea fields.

In addition, compared to the high application rate of chemical N fertilizer (CNL450), the BFH225 treatment that reduced the annual N fertilization rate by 50% did not affect the tea yield (Table 2) but significantly decreased average N₂O emissions by 71.6% (Figure 2). This decrease may be ascribed to three possible mechanisms. First, because *Trichoderma viride* could promote plant growth, mineral nitrogen in the soil may be more quickly taken up by the vigorously growing tea plants in the presence of *Trichoderma* spp. [19], thereby reducing the N in the substrate available for N₂O production. Second, application of biofertilizer with a high C/N ratio (>30) results in temporarily improving soil N immobilization and thus a low availability of soil N for N₂O emission [40].

Finally, the buffering and loosening effect of the organic matter in the biofertilizer resulting in higher pH and oxygen in the soils may have favored N₂ as an end product rather than N₂O in denitrification [41].

3.4. Effects of Soil NH₄⁺ and NO₃⁻ Concentrations on N₂O Production. N fertilizer application significantly increased the soil (0–20 cm) NH₄⁺ and NO₃⁻ concentrations over those of unfertilized soil (Figure 3). For CNL450 and CNL225, the NH₄⁺ concentrations varied between 17.0 and 92.1 mg N kg⁻¹ soil (dw), with mean concentrations as high as 56.1 ± 19.6 and 29.5 ± 11.9 mg N kg⁻¹, respectively. The NO₃⁻ concentrations ranged from 6.6 to 31.3 mg N kg⁻¹ and averaged 20.6 ± 6.1 and 12.2 ± 3.4 mg N kg⁻¹ for CNL450 and CNL225, respectively. For BFH225 and BFH113, the NH₄⁺ concentration ranged from 3.6 to 17.2 mg N kg⁻¹ with lower mean concentrations of 11.4 ± 3.4 and 6.8 ± 1.7 mg N kg⁻¹ throughout the tea season. NO₃⁻ concentrations varied between 0.9 and 8.0 mg N kg⁻¹ with mean concentrations of 4.2 ± 2.5 and 2.1 ± 1.0 mg N kg⁻¹. N concentrations in the CNL450 and CNL225 treatments decreased rapidly after fertilization; however, in the BFH225 and BFH113 treatments, it remained comparatively stable. In addition, the N concentrations in the BFH113 treatment were lower than in the BFH225 treatment with more intensive fertilization. Organic nitrogen slowly released from the biofertilizer may have been responsible for this phenomenon.

A significant positive relationship was found when N₂O emissions were linearly regressed against soil N concentrations across the various treatments. For all N fertilizer treatments, a significant positive correlation existed between N₂O fluxes and soil NH₄⁺-N contents ($y = 0.49x + 0.90$, r^2

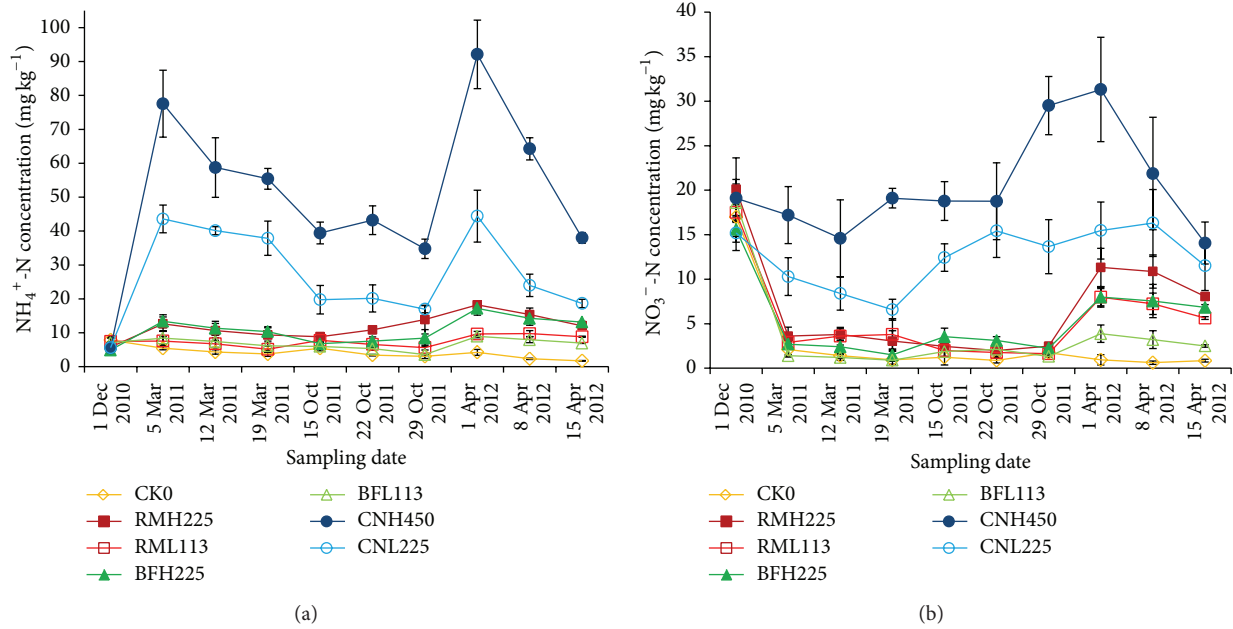


FIGURE 3: Variations in soil concentrations of (a) $\text{NH}_4^+\text{-N}$ and (b) $\text{NO}_3^-\text{-N}$ in tea fields during 2010-2012 (CK0: unfertilized; RMH225: raw materials applied at $225 \text{ kg N ha}^{-1} \text{ yr}^{-1}$; RMH113: raw materials applied at $113 \text{ kg N ha}^{-1} \text{ yr}^{-1}$; BFH225: biofertilizer applied at $225 \text{ kg N ha}^{-1} \text{ yr}^{-1}$; BFH113: biofertilizer applied at $113 \text{ kg N ha}^{-1} \text{ yr}^{-1}$; CNH450: urea applied at $450 \text{ kg N ha}^{-1} \text{ yr}^{-1}$; and CNH225: urea applied at $225 \text{ kg N ha}^{-1} \text{ yr}^{-1}$).

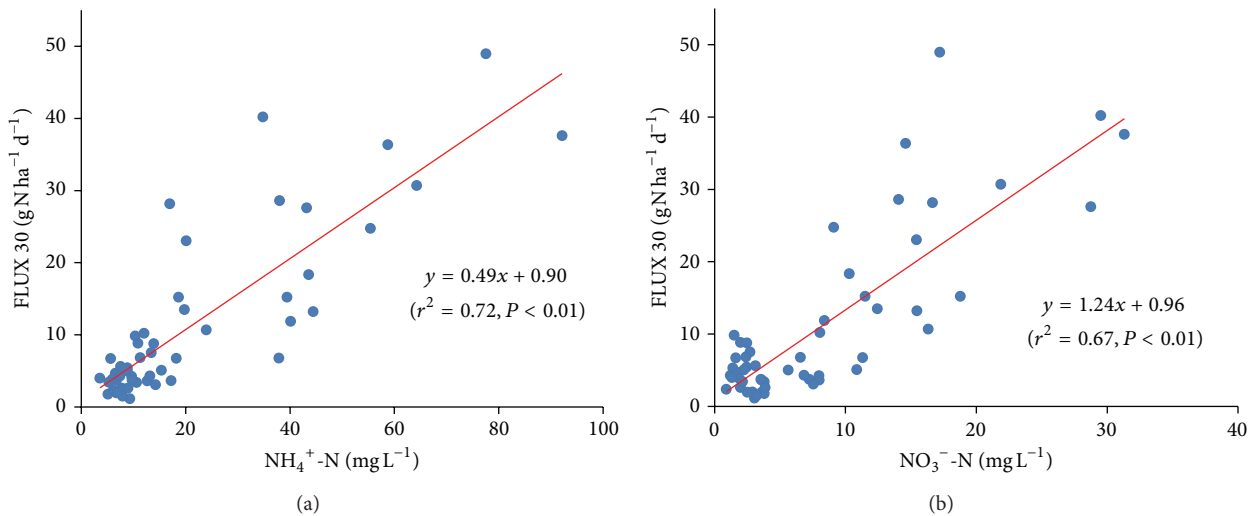


FIGURE 4: Relationships between N_2O emissions from the tea field and soil concentrations of (a) $\text{NH}_4^+\text{-N}$ and (b) $\text{NO}_3^-\text{-N}$.

= 0.72, and $P < 0.01$, Figure 4(a)) and a similar effect was observed between N_2O fluxes and soil $\text{NO}_3^-\text{-N}$ contents ($y = 1.24x + 0.96$, $r^2 = 0.67$, and $P < 0.01$, Figure 4(b)).

In several previous studies, soil temperature, soil moisture, and $\text{NH}_4^+\text{-N}$ or $\text{NO}_3^-\text{-N}$ contents were identified as the main environmental drivers of N_2O fluxes [26, 34, 42], affecting either nitrification or denitrification and thus N_2O production. The temperature and humidity of the soil, which were significantly correlated with N_2O fluxes, are controlled by natural factors such as seasons and precipitation. However, another key factor affecting N_2O flux, the N content in the

soil, can be controlled by changing the type of fertilizer applied, the fertilization rate, and the timing of application, providing a feasible method of controlling the N_2O flux.

4. Conclusions

Land-use conversion from woodlands to tea fields in subtropical areas of central China leads to increased N_2O emissions, partly due to increased N fertilizer use. By liquid-state fermentation of SPSW and solid-state fermentation of paddy straw by *T. viride*, tea plantations can be provided

with biofertilizer that can replace some functions of synthetic N, minimizing synthetic inputs of fertilizer in tea cultivation. Improved management using biofertilizer rather than synthetic N fertilizer can significantly decrease N₂O emissions while sustaining or increasing tea production. Thus, the process described here using SPSW and rice straw for mass-scale production of *T. viride* biofertilizer is a feasible and cost-effective approach for minimizing synthetic inputs of fertilizer, reducing cumulative N₂O emissions and developing the best management practices for N in soils.

Conflict of Interests

The authors declare that there is no conflict of interests regarding the publishing of this paper.

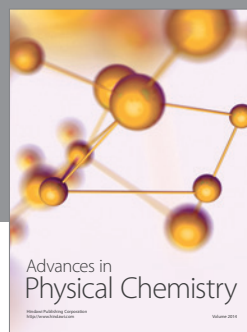
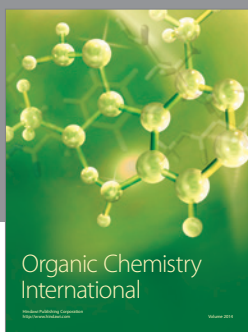
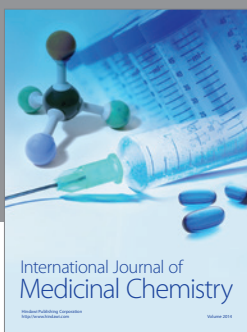
Acknowledgments

This work was supported by the Key Project of Chinese Academy of Sciences (nos. KZZD-EW-11-3 and KZZD-EW-09-3) and the National Key Technology R&D Program (no. 2013BAD11B03).

References

- [1] Y. Li, J. S. Wu, S. L. Liu et al., "Is the C:N:P stoichiometry in soil and soil microbial biomass related to the landscape and land use in southern subtropical China?" *Global Biogeochemical Cycles*, vol. 26, pp. 1-14, 2012.
- [2] S. Li, X. Wu, H. Xue et al., "Quantifying carbon storage for tea plantations in China," *Agriculture, Ecosystems & Environment*, vol. 141, no. 3-4, pp. 390-398, 2011.
- [3] Y. Li, X. Q. Fu, X. L. Liu et al., "Spatial variability and distribution of N₂O emissions from a tea field during the dry season in subtropical central China," *Geoderma*, vol. 193, pp. 1-12, 2013.
- [4] J. N. Galloway, A. R. Townsend, J. W. Erisman et al., "Transformation of the nitrogen cycle: recent trends, questions, and potential solutions," *Science*, vol. 320, no. 5878, pp. 889-892, 2008.
- [5] A. R. Ravishankara, J. S. Daniel, and R. W. Portmann, "Nitrous oxide (N₂O): the dominant ozone-depleting substance emitted in the 21st century," *Science*, vol. 326, no. 5949, pp. 123-125, 2009.
- [6] S. J. Hall and P. A. Matson, "Nitrogen oxide emissions after nitrogen additions in tropical forests," *Nature*, vol. 400, no. 6740, pp. 152-155, 1999.
- [7] Y. Xu, L. Nie, R. J. Buresh et al., "Agronomic performance of late-season rice under different tillage, straw, and nitrogen management," *Field Crops Research*, vol. 115, no. 1, pp. 79-84, 2010.
- [8] D. C. Edmeades, "The long-term effects of manures and fertilisers on soil productivity and quality: a review," *Nutrient Cycling in Agroecosystems*, vol. 66, no. 2, pp. 165-180, 2003.
- [9] O. C. Devèvre and W. R. Horwath, "Decomposition of rice straw and microbial carbon use efficiency under different soil temperatures and moistures," *Soil Biology and Biochemistry*, vol. 32, no. 11-12, pp. 1773-1785, 2000.
- [10] H. Shindo and T. Nishio, "Immobilization and remineralization of N following addition of wheat straw into soil: determination of gross N transformation rates by ¹⁵N- ammonium isotope dilution technique," *Soil Biology and Biochemistry*, vol. 37, no. 3, pp. 425-432, 2005.
- [11] W. Han and M. He, "The application of exogenous cellulase to improve soil fertility and plant growth due to acceleration of straw decomposition," *Bioresource Technology*, vol. 101, no. 10, pp. 3724-3731, 2010.
- [12] M. Schmoll and A. Schuster, "Biology and biotechnology of *Trichoderma*," *Applied Microbiology and Biotechnology*, vol. 87, no. 3, pp. 787-799, 2010.
- [13] R. L. Yadav, A. Suman, S. R. Prasad, and O. Prakash, "Effect of *Gluconacetobacter diazotrophicus* and *Trichoderma viride* on soil health, yield and N-economy of sugarcane cultivation under subtropical climatic conditions of India," *European Journal of Agronomy*, vol. 30, no. 4, pp. 296-303, 2009.
- [14] M. Verma, S. K. Brar, R. D. Tyagi, R. Y. Surampalli, and J. R. Valéro, "Starch industry wastewater as a substrate for antagonist, *Trichoderma viride* production," *Bioresource Technology*, vol. 98, no. 11, pp. 2154-2162, 2007.
- [15] G. E. Harman, C. R. Howell, A. Viterbo, I. Chet, and M. Lorito, "*Trichoderma* species—opportunistic, avirulent plant symbionts," *Nature Reviews Microbiology*, vol. 2, no. 1, pp. 43-56, 2004.
- [16] G. E. Harman, "*Trichoderma*—not just for biocontrol anymore," *Phytoparasitica*, vol. 39, no. 2, pp. 103-108, 2011.
- [17] G. Alfano, M. L. Lewis Ivey, C. Cakir et al., "Systemic modulation of gene expression in tomato by *Trichoderma hamatum* 382," *Phytopathology*, vol. 97, no. 4, pp. 429-437, 2007.
- [18] G. E. Harman, "Multifunctional fungal plant symbionts: new tools to enhance plant growth and productivity," *New Phytologist*, vol. 189, no. 3, pp. 647-649, 2011.
- [19] M. Shores, G. E. Harman, and F. Mastouri, "Induced systemic resistance and plant responses to fungal biocontrol agents," *Annual Review of Phytopathology*, vol. 48, pp. 21-43, 2010.
- [20] M. Zhang and Z. He, "Long-term changes in organic carbon and nutrients of an Ultisol under rice cropping in southeast China," *Geoderma*, vol. 118, no. 3-4, pp. 167-179, 2004.
- [21] Z. Bai, B. Jin, Y. Li, J. Chen, and Z. Li, "Utilization of winery wastes for *Trichoderma viride* biocontrol agent production by solid state fermentation," *Journal of Environmental Sciences*, vol. 20, no. 3, pp. 353-358, 2008.
- [22] M. Verma, S. K. Brar, R. D. Tyagi, R. Y. Surampalli, and J. R. Valero, "Industrial wastewaters and dewatered sludge: rich nutrient source for production and formulation of biocontrol agent, *Trichoderma viride*," *World Journal of Microbiology and Biotechnology*, vol. 23, no. 12, pp. 1695-1703, 2007.
- [23] X. Zheng, B. Mei, Y. Wang et al., "Quantification of N₂O fluxes from soil-plant systems may be biased by the applied gas chromatograph methodology," *Plant and Soil*, vol. 311, no. 1-2, pp. 211-234, 2008.
- [24] C. Liu, K. Wang, S. Meng et al., "Effects of irrigation, fertilization and crop straw management on nitrous oxide and nitric oxide emissions from a wheat-maize rotation field in northern China," *Agriculture, Ecosystems & Environment*, vol. 140, no. 1-2, pp. 226-233, 2011.
- [25] S. J. Livesley, R. Kiese, P. Miehle, C. J. Weston, K. Butterbach-Bahl, and S. K. Arndt, "Soil-atmosphere exchange of greenhouse gases in a *Eucalyptus marginata* woodland, a clover-grass pasture, and *Pinus radiata* and *Eucalyptus globulus* plantations," *Global Change Biology*, vol. 15, no. 2, pp. 425-440, 2009.
- [26] S. Lin, J. Iqbal, R. Hu et al., "Differences in nitrous oxide fluxes from red soil under different land uses in mid-subtropical

- China," *Agriculture, Ecosystems & Environment*, vol. 146, no. 1, pp. 168–178, 2012.
- [27] S. S. Malhi and R. Lemke, "Tillage, crop residue and N fertilizer effects on crop yield, nutrient uptake, soil quality and nitrous oxide gas emissions in a second 4-yr rotation cycle," *Soil and Tillage Research*, vol. 96, no. 1-2, pp. 269–283, 2007.
- [28] A. Merino, P. Pérez-Batallón, and F. Macías, "Responses of soil organic matter and greenhouse gas fluxes to soil management and land use changes in a humid temperate region of southern Europe," *Soil Biology and Biochemistry*, vol. 36, no. 6, pp. 917–925, 2004.
- [29] X. Fu, Y. Li, W. Su et al., "Annual dynamics of N₂O emissions from a tea field in southern subtropical China," *Plant, Soil and Environment*, vol. 58, no. 8, pp. 373–378, 2012.
- [30] M. U. F. Kirschbaum, S. Saggar, K. R. Tate et al., "Comprehensive evaluation of the climate-change implications of shifting land use between forest and grassland: New Zealand as a case study," *Agriculture, Ecosystems & Environment*, vol. 150, pp. 123–138, 2012.
- [31] M. U. Kirschbaum, S. Saggar, K. R. Tate, K. P. Thakur, and D. L. Giltrap, "Quantifying the climate-change consequences of shifting land use between forest and agriculture," *Science of the Total Environment*, vol. 465, pp. 314–324, 2013.
- [32] Z. Yao, X. Zheng, H. Dong, R. Wang, B. Mei, and J. Zhu, "A 3-year record of N₂O and CH₄ emissions from a sandy loam paddy during rice seasons as affected by different nitrogen application rates," *Agriculture, Ecosystems & Environment*, vol. 152, pp. 1–9, 2012.
- [33] J. Ma, X. L. Li, H. Xu, Y. Han, Z. C. Cai, and K. Yagi, "Effects of nitrogen fertiliser and wheat straw application on CH₄ and N₂O emissions from a paddy rice field," *Australian Journal of Soil Research*, vol. 45, no. 5, pp. 359–367, 2007.
- [34] S. Lin, J. Iqbal, R. Hu et al., "Nitrous oxide emissions from rape field as affected by nitrogen fertilizer management: a case study in Central China," *Atmospheric Environment*, vol. 45, no. 9, pp. 1775–1779, 2011.
- [35] Z. Yao, X. Zheng, B. Xie et al., "Tillage and crop residue management significantly affects N-trace gas emissions during the non-rice season of a subtropical rice-wheat rotation," *Soil Biology and Biochemistry*, vol. 41, no. 10, pp. 2131–2140, 2009.
- [36] J. Zou, Y. Huang, J. Jiang, X. Zheng, and R. L. Sass, "A 3-year field measurement of methane and nitrous oxide emissions from rice paddies in China: effects of water regime, crop residue, and fertilizer application," *Global Biogeochemical Cycles*, vol. 19, no. 2, Article ID GB2021, 2005.
- [37] B. Chaves, S. De Neve, M. D. C. Lillo Cabrera, P. Boeckx, O. Van Cleemput, and G. Hofman, "The effect of mixing organic biological waste materials and high-N crop residues on the short-time N₂O emission from horticultural soil in model experiments," *Biology and Fertility of Soils*, vol. 41, no. 6, pp. 411–418, 2005.
- [38] J. Shan and X. Yan, "Effects of crop residue returning on nitrous oxide emissions in agricultural soils," *Atmospheric Environment*, vol. 71, pp. 170–175, 2013.
- [39] R. Garcia-Ruiz and E. M. Baggs, "N₂O emission from soil following combined application of fertiliser-N and ground weed residues," *Plant and Soil*, vol. 299, no. 1-2, pp. 263–274, 2007.
- [40] J. Sarkodie-Addo, H. C. Lee, and E. M. Baggs, "Nitrous oxide emissions after application of inorganic fertilizer and incorporation of green manure residues," *Soil Use and Management*, vol. 19, no. 4, pp. 331–339, 2003.
- [41] M. Šimek, L. Jišová, and D. W. Hopkins, "What is the so-called optimum pH for denitrification in soil?" *Soil Biology and Biochemistry*, vol. 34, no. 9, pp. 1227–1234, 2002.
- [42] J. Zhang and X. Han, "N₂O emission from the semi-arid ecosystem under mineral fertilizer (urea and superphosphate) and increased precipitation in northern China," *Atmospheric Environment*, vol. 42, no. 2, pp. 291–302, 2008.



Hindawi

Submit your manuscripts at
<http://www.hindawi.com>

