

Research Article

The Aqueous Extract of Rhizome of *Gastrodia elata* Protected *Drosophila* and PC12 Cells against Beta-Amyloid-Induced Neurotoxicity

Chun-Fai Ng,^{1,2} Chun-Hay Ko,^{1,2} Chi-Man Koon,^{1,2} Jia-Wen Xian,³ Ping-Chung Leung,^{1,2} Kwok-Pui Fung,^{1,2,4} Ho Yin Edwin Chan,⁵ and Clara Bik-San Lau^{1,2}

¹ Institute of Chinese Medicine, The Chinese University of Hong Kong, Shatin, New Territories, Hong Kong

² State Key Laboratory of Phytochemistry & Plant Resources in West China, The Chinese University of Hong Kong, Shatin, New Territories, Hong Kong

³ School of Chinese Medicine, The Chinese University of Hong Kong, Shatin, New Territories, Hong Kong

⁴ School of Biomedical Sciences, The Chinese University of Hong Kong, Shatin, New Territories, Hong Kong

⁵ School of Life Sciences, The Chinese University of Hong Kong, Shatin, New Territories, Hong Kong

Correspondence should be addressed to Clara Bik-San Lau; claralau@cuhk.edu.hk

Received 7 June 2013; Accepted 30 July 2013

Academic Editor: Paul Siu-Po Ip

Copyright © 2013 Chun-Fai Ng et al. This is an open access article distributed under the Creative Commons Attribution License, which permits unrestricted use, distribution, and reproduction in any medium, provided the original work is properly cited.

This study aims to investigate the neuroprotective effect of the rhizome of *Gastrodia elata* (GE) aqueous extract on beta-amyloid(A β)-induced toxicity *in vivo* and *in vitro*. Transgenic *Drosophila* mutants with A β -induced neurodegeneration in pan-neuron and ommatidia were used to determine the efficacy of GE. The antiapoptotic and antioxidative mechanisms of GE were also studied in A β -treated pheochromocytoma (PC12) cells. *In vivo* studies demonstrated that GE (5 mg/g *Drosophila* media)-treated *Drosophila* possessed a longer lifespan, better locomotor function, and less-degenerated ommatidia when compared with the A β -expressing control (all $P < 0.05$). *In vitro* studies illustrated that GE increased the cell viability of A β -treated PC12 cells in dose-dependent manner, probably through attenuation of A β -induced oxidative and apoptotic stress. GE also significantly upregulated the enzymatic activities of catalase, superoxide dismutase, and glutathione peroxidase, leading to the decrease of reactive oxidation species production and apoptotic marker caspase-3 activity. In conclusion, our current data presented the first evidence that the aqueous extract of GE was capable of reducing the A β -induced neurodegeneration in *Drosophila*, possibly through inhibition of apoptosis and reduction of oxidative stress. GE aqueous extract could be developed as a promising herbal agent for neuroprotection and novel adjuvant therapies for Alzheimer's disease.

1. Introduction

Beta-amyloid (A β) protein plays a central role in Alzheimer's disease (AD). Although the exact mechanism of the disease is unknown, the devastating effect of beta-amyloid is quite clear. The protein would self-aggregate into a plaque [1], which lead to the generation of reactive oxygen species, disruption of membrane potential, and increased vulnerability to excitotoxicity, and eventually cause neuronal death [2] and related cognitive defects [3]. Recent report postulated an increasing prevalence of dementia all over the world, from

36 million in 2010 to 66 million by 2030, with majority of AD [4]. Nowadays, AD threatens our aging population with the possible loss of memory and cognitive functions and leads to increasingly heavy health care burden to our future economy. Despite advances in medical interventions, Alzheimer's disease is fatal, and presently, there is no cure. Due to the complexity of pathology, AD is not very responsive to current western medications [5, 6]. Increasing attentions have turned to the conventional medicinal herbs, which are multitargeting, to search for a novel way of AD treatment [7, 8].

Drosophila melanogaster was recently developed as a model organism for drug/herbal screening for neurodegenerative diseases. It provides several unique features such as highly stable and fully-known genetics, highly conserved disease pathways, high-throughput, and very low comparative costs [9]. Most of the genes implicated in human AD pathogenesis have *Drosophila* homologs, including amyloid precursor protein (APP), γ -secretase, and tau [10]. However, there are some dissimilarities, such as the absence of β -secretase, which cause a defect in endogenous production of A β 42 [11]. In this study, the *Drosophila* models that overexpress human A β 42 would be used. The neurodegeneration would result in reduced lifespan, reduced locomotor activity, histological change to the neuronal structure, and eye degeneration [10, 12]. These pathological phenotypes could be observed within a few weeks, much faster than the development of these phenotypes in transgenic mice [13]. Therefore, application of *Drosophila* as model of AD provides excellent tools for performing drug/herb screens to identify small molecules/herbal formula that can suppress the toxicity associated with A β accumulation.

There is a long history of the use of medicinal herbs in the treatment of neurological disorders, like convulsion, stroke, and epilepsy, that is, *Poria cocos*, *Polygala tenuifolia*, *Uncaria rhynchophylla*, *Ginkgo biloba*, and *Lycium barbarum* [8, 14]. Modern pharmacological studies revealed that *Ginkgo biloba* possessed neuroprotective effects towards D-galactose [15], beta-amyloid [16], and ischemia-induced neuronal death [17]. *Uncaria rhynchophylla* also prevented D-galactose [18], beta-amyloid [19], 6-hydroxydopamine [20], and kainic acid-induced neurotoxicity [21]. Similar neuroprotective effects were found in other commonly used herbs in China [22–25]. Rhizome of *Gastrodia elata* (Tianma, GE) is also one of the commonly used traditional Chinese medicines. Many studies have been performed to evaluate the neuroprotective effects of GE and its biologically active ingredients against different kinds of neuronal damages. The nonpolar extract of GE inhibited the 1-Methyl-4-phenylpyridinium and glutamate-induced apoptosis in neuronal cells [26, 27]. Additionally, the nonpolar extract of GE protected mice and rat against kainic acid [28] and aluminum chloride-induced neuronal damages [29]. Its active ingredient, gastrodin, has been shown to possess a protective effect against hypoxia injury on neurons [30]. Other active compounds, hydroxybenzyl alcohol and vanillin, could ameliorate ischemic cerebral injury in rats [31], and prevent ischemic death of hippocampal neuronal in gerbils [32], respectively. Recently, an *in vitro* study indicated that the aqueous extract of GE enhanced proteolytic processing of APP towards the noncytotoxic nonamyloidogenic pathway [33]. Previously, studies revealed that APP processing affected the production of A β , which strongly correlated to the neuronal degeneration in AD pathology [34]. Mishra et al. demonstrated that that GE was able to inhibit β -site APP-cleaving enzyme 1 activity and promote α -secretase activity [33]. The inhibition of β -site APP-cleaving enzyme 1 reduces the cleavage of APP into A β [35], and the activation of α -secretase increases the cleavage of APP into soluble-APP- α [36, 37].

Although the nonpolar extract of GE was found to have various neuroprotective effects, extraction of GE with water is the traditional way of preparing Chinese medicine for human consumption. The active ingredient content of aqueous extract and nonpolar extract is theoretically different, which aqueous extract should have a higher content of hydrophilic gastrodin and polysaccharides and a lower content of less hydrophilic ingredients, such as hydroxybenzaldehyde, hydroxybenzyl alcohol, vanillin, and vanillyl alcohol. According to the Chinese pharmacopeia 2010, aqueous extract of GE is a traditional Chinese medicine that is widely used for treatment of convulsive disorders, headache, dizziness, and vertigo [38]. However, there is a lack of scientific evidence to support these medical claims. Based on these previous studies and the traditional use of GE, we hypothesize that aqueous extract of GE may also be effective in protecting neurons against beta-amyloid-induced neuronal death. Moreover, there is a lack of information relating to the *in vivo* neuroprotective effects of GE aqueous extract. In hope of finding an extract which could modulate APP cleavage and reduce neurotoxic effect from beta-amyloid, in the present study, we aimed to investigate the neuroprotective effects of GE on beta-amyloid-induced neurodegeneration in *Drosophila* and its related mechanisms using pheochromocytoma (PC12) cells. The mechanism of the neuroprotective effects of GE on the downstream pathway after the cleavage of APP to A β were studied, including the reactive oxygen species production and the activity of the antioxidative enzyme. The apoptosis caused by A β was also determined by propidium iodide (PI)/Annexin V staining and confirmed by caspase-3 activity assay.

2. Materials and Methods

2.1. Materials. A β _{25–35} peptide, 3-(4,5-dimethylthiazol-2-yl)-2,5-diphenyltetrazolium bromide (MTT), and caspase-3 assay kit were purchased from Sigma-Aldrich (St Louis, MO, USA). RPMI medium 1640, fetal bovine serum (FBS), horse serum (HS), and 2',7'-dichlorodihydrofluorescein diacetate (H₂DCFDA) were obtained from Invitrogen (Carlsbad, CA, USA). Annexin V-FITC and propidium iodide (PI) were obtained from BD Biosciences (San Jose, CA, USA). Superoxide dismutase and glutathione peroxidase assay kits were from Cayman Chemical (Ann Arbor, MI, USA). Catalase fluorometric detection kit was obtained from Enzo Life Sciences (Farmingdale, NY, USA). Formula 4–24 instant *Drosophila* medium was obtained from Carolina Biological Supply Company (Burlington, NC, USA).

2.2. Herbal Materials and Extraction. The raw herbs of the rhizome of *Gastrodia elata* were purchased from Chinese herbal stores in the Guangdong province in Mainland China. It was chemically authenticated using thin layer chromatography in accordance to the Chinese Pharmacopoeia 2010 and deposited in the museum of the Institute of Chinese Medicine, the Chinese University of Hong Kong, with voucher specimen number of 2010-3294. For extraction, the raw herbs Tianma were firstly washed with tap water to remove any contaminants. They were then cut into small

pieces. The herbs were soaked with 10-fold of water (v/w) for 1 h, followed by extraction at 100°C for 1 h. Subsequent extractions were carried out with 10-fold of water (v/w) for another 1 h. The extracts were combined and concentrated under reduced pressure to give dry Tianma powdered extract. Ultimately, 48.90 g of the aqueous extract was obtained from 100.00 g of raw GE herb. The content of gastrodin was determined to be 2.2% w/w using high performance liquid chromatography, according to the method listed in the Chinese Pharmacopeia 2010 [38], which is higher than the requirement of 0.2% w/w.

2.3. *Drosophila* Strains. *Drosophila* strains used in this study were Oregon-R-C (OR) (#5), *w¹¹¹⁸* (#3605), and *elav-GAL4^{C155}* (#458) (Bloomington *Drosophila* Stock Center, Department of Biology, Indiana University, Bloomington, IN, USA). *UAS-Aβ42/CyO* and *GMR-Aβ42^{K52}*; *GMR-Aβ42^{K53}* heterozygous were gifts from Dr. M. Konsolaki (Rutgers University, USA). OR is a wild type *Drosophila*. *w¹¹¹⁸* is a white-eye mutant with a deletion in the sex-linked white gene. *Elav-GAL4^{C155}* is a mutant with an *embryonic lethal abnormal vision (elav)-GAL4* insert on the X chromosome. *UAS-Aβ42/CyO* is a mutant with an *UAS-Aβ42* insert and a *Curly of Oster (CyO)* balancer on the 2nd chromosome. *GMR-Aβ42^{K52}*; *GMR-Aβ42^{K53}* heterozygous is a mutant with 2 copies of *Glass Multiple Reporter (GMR)-Aβ42* inserts on the 3rd chromosome.

For longevity and climbing assay, genotypes of *Drosophila* used in this study were as follows: control: *elav-GAL4^{C155}/Y*, *Aβ42*: *elav-GAL4^{C155}/Y*; *UAS-Aβ42/+*; *+/+*. *Elav-GAL4^{C155}* line was crossed with *w¹¹¹⁸* line to produce control. *Elav-GAL4^{C155}* line was crossed with *UAS-Aβ42/CyO* to produce *elav-GAL4^{C155}/Y*; *UAS-Aβ42/+*; *+/+*. The genotypes of newly hatched *Drosophila* are different between male and female. The genotype of the male offspring is *elav-GAL4^{C155}/Y*; *UAS-Aβ42/+*; *+/+*, while that of female offspring is *elav-GAL4^{C155}/w*; *UAS-Aβ42/+*; *+/+*. The existence of the wild type gene in par with our *elav-GAL4^{C155}* promoter would half the overall expression of the transgene [39]. In order to minimize the error due to genetic difference, male was chosen in the present study. For the pseudopupil assay, *Drosophila* genotypes were as follows: Control: OR, *Aβ42*: *GMR-Aβ42^{K52}*; *GMR-Aβ42^{K53}* heterozygotes.

2.4. Effect of GE on Longevity of Aβ Expressing *Drosophila*. Genetic crosses were performed in the vials containing the diet with treatments. The normal control, which did not express Aβ, was maintained on the normal diet. The Aβ expressing control and the positive control were maintained on the normal diet and diet containing 10 mmol donepezil/g of *Drosophila* media, respectively, whereas the two GE groups were fed with diets containing 1 or 5 mg GE/g of *Drosophila* media, respectively. Newly hatched male *Drosophila* in each group was transferred to a new vial (30 *Drosophila* per vial), continued with their respective treatments, and incubated at 25°C. Dead *Drosophila* were counted on day 1 and 5 in a 7-day cycle, and the remaining live *Drosophila* were transferred to a new vial containing the same diet. The feeding lasted for 65

days. One hundred and fifty *Drosophila* were tested for each group.

2.5. Climbing Assay. Locomotor function of *Drosophila* was measured according to the climbing assay as previously reported by Lee et al. [40] with slight modifications. In brief, 30 male *Drosophila* were placed at the bottom of a 15 mL falcon tube and were given 10 s to climb up the tube. At the end of each trial, the number of *Drosophila* that climbed up to a vertical distance of 8 cm or above was recorded. *Drosophila* were tested on day 1 and 5 in a 7-day cycle. Each trial was performed three times. One hundred and fifty *Drosophila* were tested for each group.

2.6. Pseudopupil Assay. The control and Aβ42 *Drosophila* were treated with the same treatments as described above. *Drosophila* heads were examined under a light microscope (Olympus CX31; Olympus, Tokyo, Japan) as described previously [41]. Briefly, the compound eye of 5 days old *Drosophila* was viewed under microscope in a dark field. There were eight photoreceptors in each ommatidium, and seven of them were visible. Each photoreceptor projected a darkly staining rod, the rhabdomere, into the center of the ommatidium. Under the microscope, the rhabdomeres appeared as bright spots and rhabdomeres in each ommatidium were counted. In the control group, 7 rhabdomeres could be observed in each ommatidium. One hundred ommatidia were observed from 5 to 10 eyes, and the average rhabdomeres count per ommatidium was calculated. Three trials were conducted for each group.

2.7. Cell Culture and Drug Treatment. PC12 rat pheochromocytoma cells were obtained from American Type Culture Collection (Manassas, VA, USA) and maintained in RPMI medium 1640 supplemented with 10% (v/v) heat-inactivated HS and 5% (v/v) FBS at 37°C under 95% air/5% CO₂. Cells were utilized for experiments during exponential growth.

Aβ_{25–35} was dissolved in sterile distilled water at a concentration of 1.0 mM as a stock solution and preaggregated at 37°C for 7 days prior to use. Confluent cells were trypsinized, counted, and seeded on poly-L-lysine-coated 6-well culture plates at a density of 3 × 10⁵ cells/well and incubated for 24 h. After that, cells were treated with various concentrations of GE and 20 μM of aggregated Aβ_{25–35} for 48 h.

2.8. Cell Viability Assay. Cell viability was determined using 3-(4,5-dimethylthiazol-2-yl)-2,5-diphenyltetrazolium (MTT) assay. Briefly, the cells were plated on poly-L-lysine-coated 96-well culture plates at the density of 1 × 10⁴ cells/well and incubated for 24 h. After that, the medium was replaced with fresh medium, and the cells were incubated with Aβ_{25–35} (1 μM) in the presence or absence of aqueous extract of GE (250–1000 μg/mL) for 48 h. Thereafter, cells were incubated with 30 μL of MTT solution (final concentration, 1.5 mg/mL) for 4 h. The supernatant was then removed and 100 μL of dimethyl sulfoxide was added to dissolve the formazan crystal. Plates were shaken for 10 min and optical

density was determined with a microplate reader at 540 nm. The optical density of control cell was 100% viability.

2.9. Flow Cytometric Detection of Apoptosis. Apoptotic cells were quantified by Annexin V-FITC and PI staining by flow cytometry. Briefly, the treated cells were trypsinized and centrifuged at $450 \times g$ at $25^{\circ}C$ for 5 min. The pellet was washed twice with ice cold PBS and resuspended with Annexin V binding buffer. Annexin V-FITC and PI were added according to manufacturer's instruction and incubated in dark at room temperature for 15 min. 300 μ L of binding buffer was added to each sample. The stained cells were analyzed by fluorescence-activated cell sorter (FACS). Ten thousands events were analyzed per sample.

2.10. Measurement of Apoptosis. The treated cells were collected and washed twice with ice cold PBS. PC12 cells were lysed in cell lysis buffer (50 mM Tris-HCl pH 7.4, 2 mM $MgCl_2$, 0.1% Triton X-100) with 2 freeze/thaw cycles. The supernatant was collected after centrifugation at $15,000 \times g$ for 3 min; after that, the total protein concentration was determined by the bicinchoninic acid (BCA) assay, using bovine serum albumin (BSA) as a standard. The samples were then applied to caspase-3 activity assays, according to manufacturer's instructions. The activities were normalized using the total protein concentrations.

2.11. Measurement of Reactive Oxygen Species (ROS) Production. The 2,7-dichlorodihydrofluorescein diacetate (H_2DCF -DA) method was used to measure intracellular ROS production. H_2DCF -DA can pass through the cell membrane and oxidized by ROS to form the fluorochrome 2',7'-dichlorofluorescein (DCF). Therefore, H_2DCF -DA was widely used to reflect the intracellular ROS content [42–44]. The treated cells were collected, washed twice with ice cold PBS, and incubated with H_2DCF -DA (20 μ M) in the dark at $37^{\circ}C$ for 15 min. Then cells were washed once with PBS and harvested for fluorescence-activated cell sorter (FACS) analysis. Ten thousands events were analyzed per sample.

2.12. Measurement of the Antioxidative Enzyme Activities. The treated cells were collected and washed twice with ice cold PBS. The cells were lysed in cell lysis buffer (50 mM Tris-HCl pH 7.4, 2 mM $MgCl_2$, 0.1% Triton X-100) with 2 freeze/thaw cycles. The supernatant was collected after centrifugation at $14,000 \times g$ for 3 min, after that the total protein concentration was determined by the bicinchoninic acid (BCA) assay, using bovine serum albumin (BSA) as a standard. The samples were then applied to antioxidative enzyme activity assays, including glutathione peroxidase (GPx), superoxide dismutase (SOD), and catalase (CAT), according to manufacturer's instructions. The activities were normalized using the total protein concentrations.

2.13. Statistical Analysis. Multiple group comparisons were performed using one-way analysis of variance (ANOVA) followed by Dunnett's test to detect intergroup differences.

Comparisons for survival assay were performed using Log-Rank analysis and chi-square comparison.

All statistical analyses were performed using GraphPad Prism version 5.0 for Windows (GraphPad Software Inc., California, USA). The data were expressed as mean \pm standard deviation (SD). A value of $P < 0.05$ was considered statistically significant.

3. Results

3.1. Tianma Prolonged the Lifespan and Improved Locomotor Abilities of $A\beta$ -Expressing *Drosophila*. In the present study, we evaluated the neuroprotective effect of aqueous extract of GE, using *Drosophila* AD model. Before performing the experiments, we evaluated the effect of 5 and 50 mg GE extract/g of *Drosophila* media on food intake of *Drosophila*. Both GE treatments did not affect the food intake of *Drosophila* (data not shown), which ensured no experimental differences were due to the alteration of feeding behavior. For lifespan experiment, $A\beta$ 42 *Drosophila* showed a reduction of median and maximum lifespan by 17 days and 32 days when compared with control, respectively. Both GE treatments significantly improved the survival of *Drosophila* (Figure 1(a)). At 1 mg GE extract/g of *Drosophila* media, median and maximum lifespan were increased by 4 days (12.0%) and 4 days, respectively ($P < 0.001$ for mean increases). At 5 mg GE extract/g of *Drosophila* media, median and maximum lifespan were increased by 7 days (26.9%) and 7 days, respectively ($P < 0.001$ for mean increases).

For locomotor abilities determination, $A\beta$ 42 *Drosophila* showed significant impaired locomotion from age of day 9 onwards (Figure 1(b-i)). GE-treated flies showed an improvement in locomotor activity from age of days 12 to 23. At day 12, 19, and 23, 5 mg GE extract/g of *Drosophila* media resulted in a 14.4%, 11.6%, and 9.74% improvement in locomotion, respectively ($P < 0.001$, $P < 0.01$, $P < 0.05$) (Figure 1(b-ii)) when compared with the $A\beta$ 42 *Drosophila* without GE treatment.

3.2. Tianma Rescued Neurodegeneration in Ommatidia of $A\beta$ -Expressing *Drosophila*. We analyzed the effect of $A\beta$ 42 on degeneration of retinal tissue of *Drosophila*, which were mainly neurons. $A\beta$ 42 *Drosophila* contained significantly more degenerating rhabdomeres, compared with OregonR. The number of degenerated rhabdomeres was 3.82 ± 0.09 . $A\beta$ 42 *Drosophila* treated with GE (1 and 5 mg/g of *Drosophila* media) had significantly rescued rhabdomere in each ommatidium, with an increase of 0.49 and 0.97 rhabdomere count per ommatidium, respectively (Figure 2), which reflected a preventive effect of GE on neurodegeneration. The preventive effect was comparable to donepezil medication (10 μ mol/g of *Drosophila* media), in which there was an increase of 0.78 rhabdomere count per ommatidium than the $A\beta$ 42 *Drosophila*.

3.3. Tianma Reduced $A\beta$ -Induced Cytotoxicity in PC12 Cells and Prevented $A\beta$ -Induced Apoptosis. Exposure of PC12 cells to aggregated $A\beta_{25-35}$ (20 μ M) for 48 h caused significant

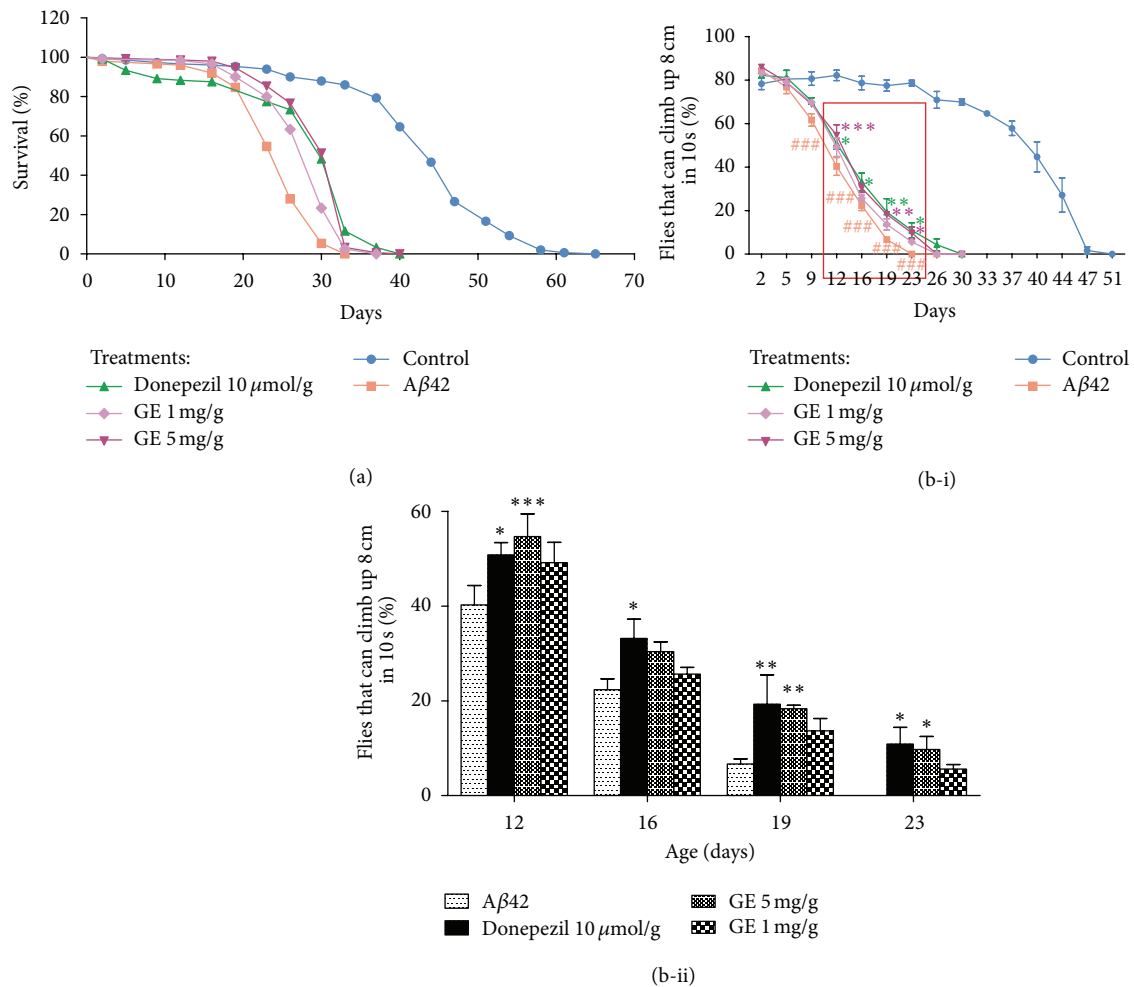


FIGURE 1: Intake of GE increases the (a) lifespan and (b-i) locomotor activity of $A\beta$ -expressing *Drosophila*. The lifespan of $A\beta$ 42 group (squares in red) is shorter than the control group (circles in blue), while GE (asterisks and triangles in purple) or donepezil (triangles in green) treatments delay the mortality of the *Drosophila*. (b-ii) is an amplification of the region from days 12 to 23 showing the differences among the $A\beta$ 42 group and the treatment groups. The percentage of *Drosophila* climbing up 8 cm in 10 seconds was increased by GE or donepezil treatments when compared with $A\beta$ 42 group. Results are the means \pm SEM from five independent crosses. $^{###}P < 0.001$ relative to control; $^*P < 0.05$, $^{**}P < 0.01$, $^{***}P < 0.001$ relative to $A\beta$ 42 *Drosophila* by one-way ANOVA for locomotor activity. Log-Rank analysis and chi-square comparison were applied to the survival data and $P < 0.001$ was obtained when comparing $A\beta$ 42 *Drosophila* and Donepezil 10 μ mol/g or GE 1 mg/g or 5 mg/g treated ones ($n = 150$).

cytotoxicity. Concentration of GE in the range from 125 to 1000 μ g/mL was identified to be non-toxic to PC12 cells by MTT assay (data not shown). The high concentration of GE used is also correlated to its high extraction yield in water (48.9%), compared with the yield of less than a few percent in extraction by nonpolar solvents. Our results demonstrated that GE imposed significant protective effect against $A\beta_{25-35}$ -induced damage in a dose dependent manner, with the maximum effect observed at 1000 μ g/mL (Figure 3). Therefore, concentration of GE in the range from 250 to 1000 μ g/mL was selected for the further apoptosis study. In this regard, we investigated the effect of GE on $A\beta_{25-35}$ -induced apoptosis using Annexin V-FITC and PI staining. Early apoptotic (PI: negative, Annexin V: positive) cells and late apoptotic (PI and Annexin V: positive) cells were

quantified by flow cytometry. For the control group treated with $A\beta_{25-35}$ only, the normalized percentages of early and late apoptosis induced by $A\beta_{25-35}$ were $14.1 \pm 3.5\%$ and $2.6 \pm 0.3\%$, respectively. For the treatment groups, the percentage of early and late apoptosis induced by $A\beta_{25-35}$ with treatment of GE were $9.7 \pm 2.4\%$ and $0.9 \pm 0.6\%$ for 250 μ g/mL, $8.2 \pm 0.3\%$ and $0.4 \pm 0.7\%$ for 500 μ g/mL, and $3.1 \pm 3.1\%$ and $0.1 \pm 0.1\%$ for 1000 μ g/mL (Figure 4(b)). The results suggested that GE can reduce $A\beta_{25-35}$ -induced apoptosis dose dependently. To further confirm the antiapoptotic effects of GE against $A\beta_{25-35}$ -induced toxicity, the activity of crucial mediator of apoptosis caspase-3 was assessed. Caspase-3 activity was increased by $31.8 \pm 13.4\%$ with $A\beta_{25-35}$ treatment, and the increase in activity was attenuated dose dependently with treatment of GE (Figure 4(c)). At 1000 μ g/mL of GE, the

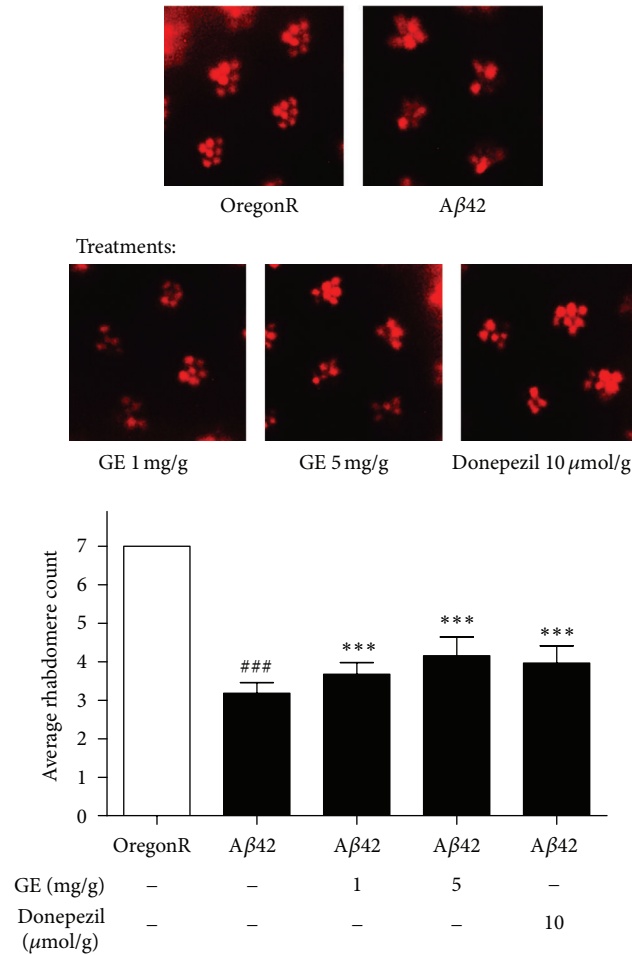


FIGURE 2: Rhabdomere count in the pseudopupil assay. Regular array of 7 ommatidia (bright red spots) was observed in OregonR eyes. Degeneration of ommatidia was observed in the Aβ42 group, while the degeneration is improved by GE or donepezil treatments. ### $P < 0.001$ relative to OregonR; *** $P < 0.001$ relative to Aβ42 *Drosophila* with no treatment by one-way ANOVA. Results are the means \pm SEM from 3 independent crosses. One hundred ommatidia were observed from 10 eyes of 5 *Drosophila* from each group in each trial.

caspase-3 activation was totally abolished and reverted to the normal activity level of the PC12 cells without Aβ_{25–35} treatment.

3.4. Tianma Prevented Aβ-Induced Oxidative Stress. Figure 5(a) shows that 20 μM Aβ_{25–35} elevated the production of ROS from 100% to 145.2 \pm 16.3%, whereas the fluorescence intensity in GE-treated groups decreased significantly (110.9 \pm 7.5%, 103.7 \pm 23.1%, and 99.0 \pm 15.1%, resp.). The decrease of fluorescence by GE reflected the reduction of ROS content, which possibly caused by the activation of antioxidative enzymes.

The activities of antioxidative enzymes (SOD, CAT, and GPx) in untreated PC12 cells and in those treated with 20 μM Aβ_{25–35} alone or with GE together are presented in Figures 5(b)–5(d). Activity of SOD was decreased by 24.75 \pm 9.07% in

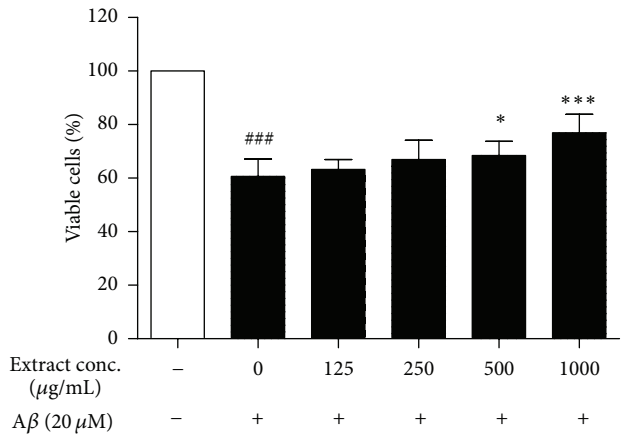


FIGURE 3: Protective effect of GE on Aβ-induced cytotoxicity in PC12 cells. Effect of 48 h treatment of GE extract on the viability of PC12 cells was determined by MTT assay. Results are the means \pm SD from three separate experiments. ### $P < 0.001$ relative to control; * $P < 0.05$, *** $P < 0.001$ relative to Aβ treatment only by one-way ANOVA.

the cells exposed to 20 μM Aβ_{25–35} (Figure 5(b)). Exposure to 20 μM Aβ_{25–35} did not significantly affect the activity of CAT (Figure 5(c)) and induced a 19.70 \pm 4.87% increase in activity of GPx (Figure 5(d)). With 1000 μg/mL of GE treatment, the activity of SOD was reverted to the normal activity level of the PC12 cells without Aβ_{25–35} treatment, while the activity of CAT was enhanced by 63.30 \pm 12.58% compared with the normal control. Moreover, 1000 μg/mL of GE further increase the activity of GPx to 45.00 \pm 7.71% higher than the normal control. Overall, treatment with different doses of GE significantly and dose-dependently enhanced the activities of SOD, CAT, and GPx (Figures 5(b)–5(d)).

4. Discussion

In the present study, we have presented the first evidence that the aqueous extract of GE could significantly ameliorate the adverse morphological changes from Aβ protein in *Drosophila*, as indicated by improving locomotor abilities, prolonging the lifespan, and rescuing neurodegeneration in ommatidia in Aβ-expressing *Drosophila*. *In vitro* experiments showed that Aβ-treated cultures exhibited characteristic features of ROS production, apoptosis, and cell death in PC12 cells. GE aqueous extract attenuated Aβ-induced cytotoxicity effectively, probably through increasing the activities of antioxidative enzymes so as to reduce overall oxidative stress and subsequently inhibiting Aβ-induced apoptosis.

Two *Drosophila* lines were used to overexpress different levels of Aβ, one was using *GMR* promoter and one was using *GALA-UAS* system. *GMR* promoter element directs the expression of the protein at the eye imaginal disc. The advantage of expressing only in the eye is that flies producing a highly toxic protein may still be viable. Rapid and severe degeneration of the ommatidia (eyes of *Drosophila*) was achieved due to the presence of two copies of gene encoding for Aβ in our *Drosophila* with *GMR* promoter [10]. For the

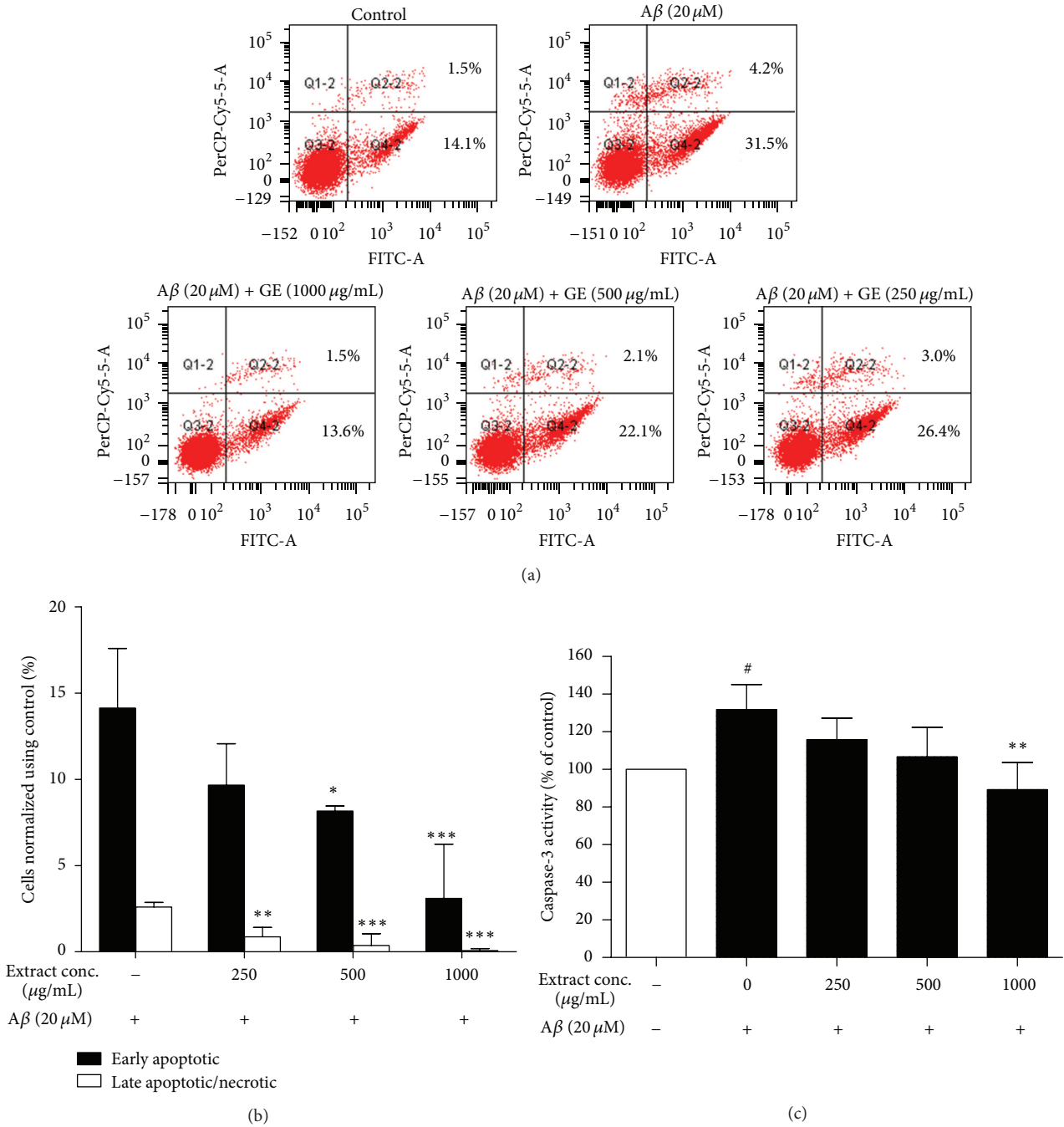


FIGURE 4: Antiapoptotic effect of GE on Aβ-induced cytotoxicity in PC12 cells. (a) Representative plots for the flow cytometric analysis. (b) GE extract reduced Aβ-induced apoptosis in flow cytometric analysis. The fluorescence intensity was measured after PC12 cells were exposed to 20 μM Aβ for 48 h, followed by incubation with Annexin V-FITC and PI for 15 min. (c) 48 h treatment of GE extract attenuated Aβ-induced activation of caspase-3. Results are the means ± SD from three separate experiments. #P < 0.05 relative to control; *P < 0.05, **P < 0.01, ***P < 0.001 relative to Aβ treatment only by one-way ANOVA.

latter one, the *GAL4-UAS* system is more complex. Tissue-specific expression of the *UAS-Aβ42* is achieved by crossing the transgenic *Drosophila* with driver lines that control tissue-specific expression *GAL4*, which would bind with *UAS* to activate gene transcription. *Elav-GAL4* is a commonly used pan-neuronal driver that directs the expression of transgene

throughout the brain, neuronal system, and retina of the *Drosophila* [45]. The advantage of this model is that the lethal gene can be carried in the parents without affecting their viability and fecundity. In this study, *UAS-Aβ42* would be crossed with *elav^{CI55}-GAL4* to express Aβ42 in the brain and the whole neuronal system and gradually accumulate to

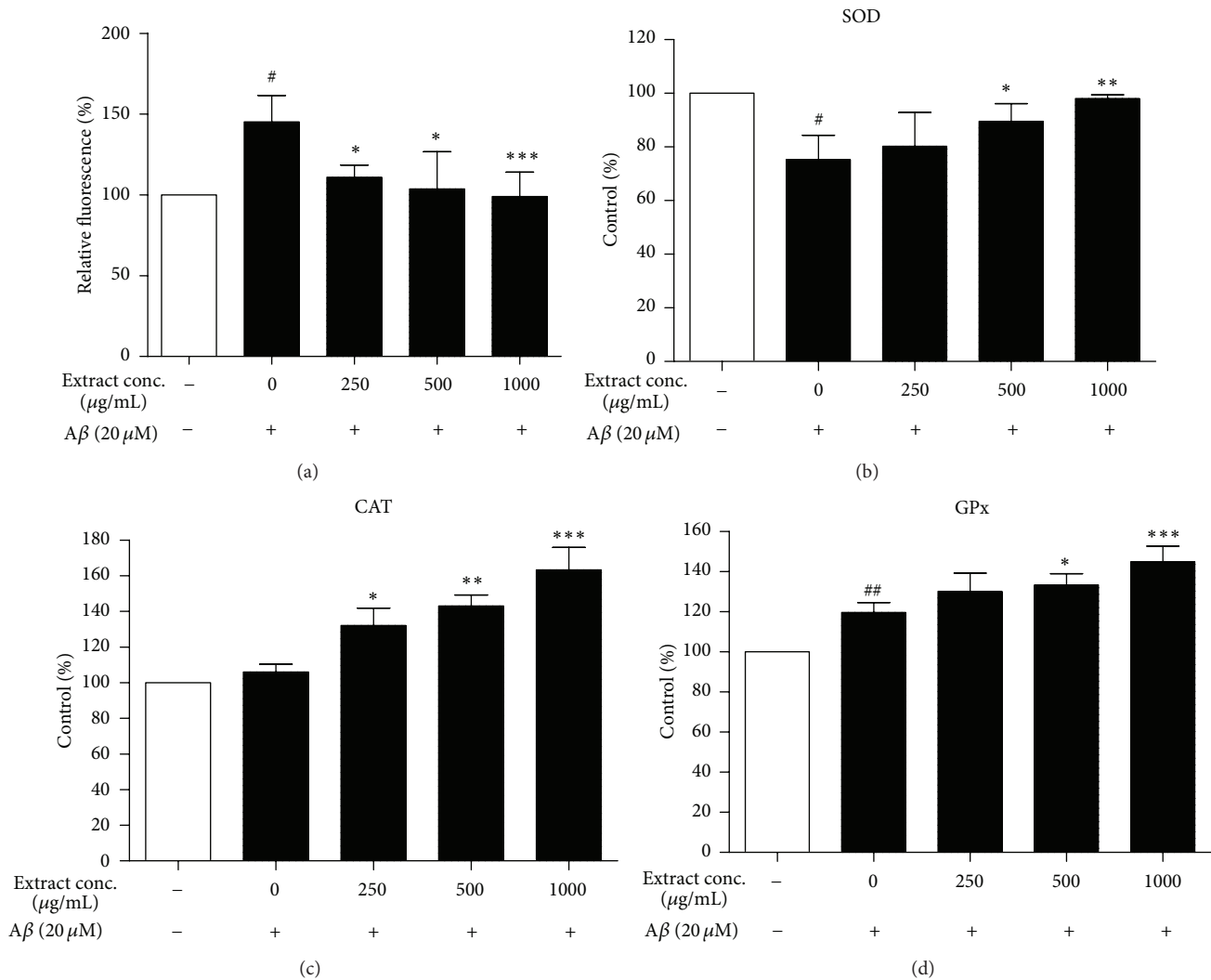


FIGURE 5: Antioxidative effect of GE on $A\beta$ -induced cytotoxicity in PC12 cells. (a) GE extract reduced $A\beta$ -induced oxidative stress in flow cytometric analysis of DCF positive cells. The fluorescence intensity of DCF was measured after PC12 cells were exposed to $20 \mu\text{M}$ $A\beta$ for 48 h, followed by $20 \mu\text{M}$ H2DCF-DA for 15 min. 48 h treatment of GE extract increased the activities of antioxidative enzymes (b) superoxide dismutase (c) catalase and (d) glutathione peroxidase in $20 \mu\text{M}$ $A\beta$ -treated cells. Results are the means \pm SD from three separate experiments. # $P < 0.05$, ## $P < 0.01$ relative to control; * $P < 0.05$, ** $P < 0.01$, *** $P < 0.001$ relative to $A\beta$ treatment only by one-way ANOVA.

induce the degenerative phenotypes, such as the pathological morphologies and behavioral changes, in weeks. Therefore, to identify the efficacy against $A\beta$ toxicity, the rationale of the current assays aimed to see whether GE aqueous extract can rescue retinal degeneration, locomotion and climbing deficits, and increase the lifespan of the flies, restoration of normal activity.

Using these two *Drosophila* models, the *in vivo* effects of GE aqueous extract in Alzheimer's disease were studied. Firstly, we found that GE aqueous extract reduced the neurotoxic effect of $A\beta$ to ommatidia. The degree of degeneration of ommatidia reflected the extent of neurodegeneration [46], based on the fact that photoreceptors were neurons in nature. Overexpression of $A\beta$ causes plaque formation and neuronal degeneration, which was responsible for the eye morphological changes [10, 12]. The intake of GE extract reduced the

adverse effect of $A\beta$ -associated plaque formation and rescued the eye phenotype. Similar findings were observed in the other *Drosophila* model with systemic pan-neuronal $A\beta$ 42 expression. GE aqueous extract significantly prolonged the lifespan and improved locomotor dysfunction of the flies. We also found that the beneficial effects of GE were comparable with the medicine donepezil. Hong et al. recently reported that Chinese traditional medicinal prescription SuHeXiang Wan improved the longevity and locomotor ability using the same *Drosophila* model system [47]. The results of the current study suggested that GE aqueous extract confers a therapeutic potential to AD-like pathology of $A\beta$ 42 overexpressing in different *Drosophila* models. In our *Drosophila* model, the AD-like pathology was caused by the neurotoxic $A\beta$ produced, secreted to and aggregated in the extracellular matrix [48], yet there was no previous report on the effect of $A\beta$ on

apoptosis and oxidative stress on *Drosophila*. Previous reports revealed the direct proportional relationship between the manifestations of neuronal dysfunction in *Drosophila*, such as locomotor deficits and reduced lifespan, and aggregation rate of the A β , which provide evidence that the aggregated A β is the primary determinant of the pathological behavior in the *Drosophila* system [49]. To study pathogenic mechanisms, we have developed *in vitro* model that recapitulate many of the signature events in A β neurotoxicity including the accumulation extracellular aggregated A β , leading to apoptotic events and formation of reactive oxygen species. Basing on previous studies that were using PC12 cells as a platform to express and study the action mechanisms of *Drosophila* proteins [50], we postulate that the PC12 cells would be able to mimic the cellular environment of the *Drosophila*. Moreover, there was a well-established platform using PC12 cells and *Drosophila* to screen and validate aggregation inhibitors of polyglutamine, which resulted in neurodegeneration [51, 52]. The platform suggested that PC12 cells and *Drosophila* would have correlation in neurodegeneration mechanisms. Therefore, PC12 cell line was used to explain the *in vivo* effects in the present study.

For the *in vitro* mechanistic studies, PC12 cell line, which is originated from transplantable rat adrenal pheochromocytoma, was used. Due to their similarity with sympathetic neurons and their reversible differentiation response to nerve growth factor [53], PC12 cells were widely used in the study of neuronal differentiation [54], neuronal function [55], and neurodegeneration [56, 57]. A β -induced cytotoxicity on PC12 cell line is widely used to study the AD-related neurodegeneration [58]. In the present study, we adopted this cell line and found that GE possessed protective effect against A β -induced cell death in MTT assay. Previously, Kim et al. had also demonstrated that the ethyl ether fraction of GE was able to protect A β -induced IMR-32 neuroblastoma cell death [59]. However, the content of active ingredients in the ethyl ether extract was expected to be different from the aqueous extract. Although the dose of extract used in the study was as low as 10 $\mu\text{g}/\text{mL}$, the extraction yield of the extract was only 1.12%. When comparing with the present study of extraction yield of 48.90%, the dose was equivalent to 420.61 $\mu\text{g}/\text{mL}$ in the present study, which is similar to the present dose of 500 $\mu\text{g}/\text{mL}$. Moreover, the study only demonstrated the protective effect using MTT assay, but lacked further elucidation of any protective mechanisms. A complete picture from the *in vivo* effect to the downstream neuroprotective mechanisms was yet to be provided, and the present study was the novel one targeting this. Extensive evidence shows that neuron cell death in AD is mediated by apoptosis [60, 61]. For instance, postmortem analysis of AD brain shows that there is DNA fragmentation in neurons and glia of hippocampus and cortex as detected by TdT-mediated dUTP nick end labeling [62]. It was also found that the extracellular accumulation of A β , which triggers the intracellular formation of neurofibrillary tangles [63], leads to the loss of cholinergic neurons [64]. Hence, a common theory believed that the pathological neuronal loss in AD is through apoptosis, which may be caused by A β accumulation and cytotoxicity [2, 34]. In order to elucidate the possible

mechanisms of the neuroprotective effect, the antiapoptotic effects of GE were determined by flow cytometry using PI/Annexin V staining method and caspase-3 activity assay. Our PI/Annexin V data demonstrated that GE could strongly attenuate not only the early stage but also the late stage of apoptosis/necrosis induced by A β . Besides, we also found that GE could suppress A β -induced caspase-3 activity, which provided further evidence in antiapoptosis.

Although the exact underlying mechanism leading to A β -induced apoptosis was not well understood, oxidative stress caused by the A β plaque was widely believed to seriously impair various cellular function and play an important role in apoptosis [65, 66]. Therefore, reducing reactive oxygen species (ROS) production was a promising approach to inhibit A β -induced apoptosis. It has been previously reported that the nonpolar fractions of GE and its active constituents could inhibit ROS generation [32, 67]. In this study, we found that the aqueous extract of GE also possessed strong antioxidative action, which decreased the H₂DCF-DA-labeled ROS accumulation in PC12 cells. Antioxidative action can be mediated by 2 mechanisms: activation of antioxidative enzymes and direct free radical scavenging [68]. Antioxidative enzymes, including superoxide dismutase and catalase, convert superoxides, a strong ROS, to hydrogen peroxide and then to water. Glutathione peroxidase catalyzes the reaction of glutathione and hydrogen peroxide, which is a crucial endogenous antioxidative mechanism, to water [69]. In the present study, although A β did not affect the activity of CAT, the impairment of the upstream SOD would cause the accumulation of superoxides. On the other hand, the upregulation of GPx by A β was possibly a response to the increased ROS and facilitated the action of glutathione. Due to the fact that CAT and GPx could not breakdown superoxides, the accumulation of superoxides may be the explanation for the observed oxidative stress after the A β treatment. Our results also demonstrated that GE up-regulated the activity of SOD, CAT, and GPx during A β -insult. The activity of SOD was retained, which resume the breakdown of superoxides to hydrogen peroxide. The up-regulation of CAT and GPx can promote the clearance of ROS, and that partially explained the antioxidative action for GE. Other studies also demonstrated that both nonpolar and polar fractions of GE have hydroxyl radical scavenging activity and reduce lipid peroxidation [67, 70, 71]. Its active constituents, including vanillyl alcohol, vanillin, hydroxybenzyl alcohol, and hydroxybenzaldehyde, were found to be potent antioxidants [32, 72]. These compounds can be found in aqueous extract of GE [73, 74].

As aqueous extract of GE was widely and traditionally used in Chinese medicine as a supplement in diet and an herbal medicine [75], and the further development of GE as novel non-toxic preventive/treatment interventions for life-threatening neurodegenerative diseases, such as AD, is possible. In order to confirm our current findings, further investigation of the neuroprotective effect of GE to mammalian AD model is necessary. Since the traditional way of consuming Chinese herbs is to be taken orally, the gastrointestinal metabolic ingredients of GE are the final effective elements. However, very limited information were

found regarding the pharmacokinetic data of GE aqueous extract, except that gastrodin was known to be metabolized to *p*-hydroxybenzyl alcohol [76], and both gastrodin and *p*-hydroxybenzyl alcohol possess significant free radical scavenging and memory consolidation effects [77, 78]. Hence, further pharmacokinetic studies are required to understand the post metabolism ingredients of GE. Besides, further investigation is needed to determine the clinical efficacy and safety of GE in human subjects because the presence of blood-brain barrier (BBB) may block those beneficial active ingredients from the brain. Although BBB exists in *Drosophila* and serves the function of blocking the passage of ions and small molecules [79, 80], the *Drosophila's* BBB is morphologically different from the mammalian one [81, 82]. Nevertheless, some previous studies demonstrated that intravenous administration of gastrodin and hydroxybenzyl alcohol were able to pass through BBB in rats [83, 84]. However, the pharmacokinetics of GE in the human brain is yet to be investigated.

5. Conclusions

In conclusion, the present study demonstrated the novel use of aqueous extract of GE against A β -induced neurodegeneration in *Drosophila*. Its effect is mediated through the increasing activity of antioxidative enzymes and reducing oxidative stress in cells, together with the inhibition of caspase-3, leading to the attenuation of apoptosis. Based on these findings, we suggest developing GE aqueous extract as a potential therapeutic intervention for neurodegenerative diseases, such as Alzheimer's disease.

Conflict of Interests

None of the authors has any conflict of interests regarding this study.

Acknowledgment

This project was supported by Ming Lai Foundation.

References

- [1] J. Schnabel, "Amyloid: little proteins, big clues," *Nature*, vol. 475, no. 7355, pp. S12–S14, 2011.
- [2] M. P. Mattson, "Pathways towards and away from Alzheimer's disease," *Nature*, vol. 430, no. 7000, pp. 631–639, 2004.
- [3] J. Hardy and D. J. Selkoe, "The amyloid hypothesis of Alzheimer's disease: progress and problems on the road to therapeutics," *Science*, vol. 297, no. 5580, pp. 353–356, 2002.
- [4] Alzheimer's Disease International, *World Alzheimer Report*, Alzheimer's Disease International, London, UK.
- [5] L. Gravitz, "Drugs: a tangled web of targets," *Nature*, vol. 475, no. 7355, pp. S9–S11, 2011.
- [6] P. T. Francis, A. M. Palmer, M. Snape, and G. K. Wilcock, "The cholinergic hypothesis of Alzheimer's disease: a review of progress," *Journal of Neurology Neurosurgery and Psychiatry*, vol. 66, no. 2, pp. 137–147, 1999.
- [7] L. M. Fu and J. T. Li, "A systematic review of single chinese herbs for Alzheimer's disease treatment," *Evidence-Based Complementary and Alternative Medicine*, vol. 2011, Article ID 640284, 8 pages, 2011.
- [8] M. J. R. Howes and P. J. Houghton, "Ethnobotanical treatment strategies against alzheimer's disease," *Current Alzheimer Research*, vol. 9, no. 1, pp. 67–85, 2012.
- [9] R. J. Greenspan, *Fly Pushing: The Theory and Practice of Drosophila Genetics*, Cold Spring Harbor Laboratory Press, Cold Spring Harbor, NY, USA, 2nd edition, 2004.
- [10] A. Finelli, A. Kelkar, H. J. Song, H. Yang, and M. Konsolaki, "A model for studying Alzheimer's A β 42-induced toxicity in *Drosophila melanogaster*," *Molecular and Cellular Neuroscience*, vol. 26, no. 3, pp. 365–375, 2004.
- [11] A. Moloney, D. B. Sattelle, D. A. Lomas, and D. C. Crowther, "Alzheimer's disease: insights from *Drosophila melanogaster* models," *Trends in Biochemical Sciences*, vol. 35, no. 4, pp. 228–235, 2010.
- [12] K. Iijima, H. C. Chiang, S. A. Hearn et al., "A β 42 mutants with different aggregation profiles induce distinct pathologies in *Drosophila*," *PLoS ONE*, vol. 3, no. 2, Article ID e1703, 2008.
- [13] D. Paris, N. J. Ganey, V. Laporte et al., "Reduction of β -amyloid pathology by celastrol in a transgenic mouse model of Alzheimer's disease," *Journal of Neuroinflammation*, vol. 7, article 17, 2010.
- [14] B. H. May, M. Lit, C. C. Xue et al., "Herbal medicine for dementia: a systematic review," *Phytotherapy Research*, vol. 23, no. 4, pp. 447–459, 2009.
- [15] N. Wang, X. Chen, D. Geng, H. Huang, and H. Zhou, "Ginkgo biloba leaf extract improves the cognitive abilities of rats with D-galactose induced dementia," *Journal of Biomedical Research*, vol. 27, no. 1, pp. 29–36, 2013.
- [16] C. Shi, L. Zhao, B. Zhu et al., "Protective effects of Ginkgo biloba extract (EGb761) and its constituents quercetin and ginkgolide B against β -amyloid peptide-induced toxicity in SH-SY5Y cells," *Chemico-Biological Interactions*, vol. 181, no. 1, pp. 115–123, 2009.
- [17] B. Spinnewyn, N. Blavet, and F. Clostre, "Effects of Ginkgo biloba extract on a cerebral ischaemia model in gerbils," *Presse Medicale*, vol. 15, no. 31, pp. 1511–1515, 1986.
- [18] Y. F. Xian, Z. X. Lin, M. Zhao, Q. Q. Mao, S. P. Ip, and C. T. Che, "Uncaria rhynchophylla ameliorates cognitive deficits induced by D-galactose in mice," *Planta Medica*, vol. 77, no. 18, pp. 1977–1983, 2011.
- [19] Y. F. Xian, Z. X. Lin, Q. Q. Mao et al., "Bioassay-guided isolation of neuroprotective compounds from Uncaria rhynchophylla against beta-amyloid-induced neurotoxicity," *Evidence-Based Complementary and Alternative Medicine*, vol. 2012, Article ID 802625, 8 pages, 2012.
- [20] J. S. Shim, H. G. Kim, M. S. Ju, J. G. Choi, S. Y. Jeong, and M. S. Oh, "Effects of the hook of Uncaria rhynchophylla on neurotoxicity in the 6-hydroxydopamine model of Parkinson's disease," *Journal of Ethnopharmacology*, vol. 126, no. 2, pp. 361–365, 2009.
- [21] C. L. Hsieh, C. H. Liu, Y. W. Lin, N. Y. Tang, and H. J. Liu, "Neuroprotective effect of Uncaria rhynchophylla in Kainic acid-induced epileptic seizures by modulating hippocampal mossy fiber sprouting, neuron survival, astrocyte proliferation, and S100b expression," *Evidence-based Complementary and Alternative Medicine*, vol. 2012, Article ID 194790, 2012.

- [22] Z. Lin, J. Gu, J. Xiu, T. Mi, J. Dong, and J. K. Tiwari, "Traditional chinese medicine for senile dementia," *Evidence-Based Complementary and Alternative Medicine*, vol. 2012, Article ID 692621, 13 pages, 2012.
- [23] K. Y. Zhu, Q. Q. Mao, S. P. Ip et al., "A standardized chinese herbal decoction, kai-xin-san, restores decreased levels of neurotransmitters and neurotrophic factors in the brain of chronic stress-induced depressive rats," *Evidence-Based Complementary and Alternative Medicine*, vol. 2012, Article ID 149256, 13 pages, 2012.
- [24] R. Naito and C. Tohda, "Characterization of anti-neurodegenerative effects of *Polygala tenuifolia* in $A\beta(25-35)$ -treated cortical neurons," *Biological and Pharmaceutical Bulletin*, vol. 29, no. 9, pp. 1892–1896, 2006.
- [25] C. Rui, L. Yuxiang, H. Yinju et al., "Protective effects of *Lycium barbarum* polysaccharide on neonatal rat primary cultured hippocampal neurons injured by oxygen-glucose deprivation and reperfusion," *Journal of Molecular Histology*, vol. 43, no. 5, pp. 535–542, 2012.
- [26] H. An, I. S. Kim, S. Koppula et al., "Protective effects of *Gastrodia elata* Blume on MPP⁺-induced cytotoxicity in human dopaminergic SH-SY5Y cells," *Journal of Ethnopharmacology*, vol. 130, no. 2, pp. 290–298, 2010.
- [27] Z. B. Huang, Z. Wu, F. K. Chen, and L. B. Zou, "The protective effects of phenolic constituents from *Gastrodia elata* on the cytotoxicity induced by KCl and glutamate," *Archives of Pharmacological Research*, vol. 29, no. 11, pp. 963–968, 2006.
- [28] H. J. Kim, K. D. Moon, S. Y. Oh, S. P. Kim, and S. R. Lee, "Ether fraction of methanol extracts of *Gastrodia elata*, a traditional medicinal herb, protects against kainic acid-induced neuronal damage in the mouse hippocampus," *Neuroscience Letters*, vol. 314, no. 1-2, pp. 65–68, 2001.
- [29] H. Shuchang, N. Qiao, N. Piye et al., "Protective effects of *gastrodia elata* on aluminium-chloride-induced learning impairments and alterations of amino acid neurotransmitter release in adult rats," *Restorative Neurology and Neuroscience*, vol. 26, no. 6, pp. 467–473, 2008.
- [30] X. Xu, Y. Lu, and X. Bie, "Protective effects of *gastrodin* on hypoxia-induced toxicity in primary cultures of rat cortical neurons," *Planta Medica*, vol. 73, no. 7, pp. 650–654, 2007.
- [31] S. S. Yu, J. Zhao, S. P. Lei, X. M. Lin, L. L. Wang, and Y. Zhao, "4-hydroxybenzyl alcohol ameliorates cerebral injury in rats by antioxidant action," *Neurochemical Research*, vol. 36, no. 2, pp. 339–346, 2011.
- [32] H. J. Kim, I. K. Hwang, and M. H. Won, "Vanillin, 4-hydroxybenzyl aldehyde and 4-hydroxybenzyl alcohol prevent hippocampal CA1 cell death following global ischemia," *Brain Research*, vol. 1181, no. 1, pp. 130–141, 2007.
- [33] M. Mishra, J. Huang, Y. Y. Lee et al., "*Gastrodia elata* modulates amyloid precursor protein cleavage and cognitive functions in mice," *BioScience Trends*, vol. 5, no. 3, pp. 129–138, 2011.
- [34] M. P. Mattson, "Cellular actions of β -amyloid precursor protein and its soluble and fibrillogenic derivatives," *Physiological Reviews*, vol. 77, no. 4, pp. 1081–1132, 1997.
- [35] R. Vassar, B. D. Bennett, S. Babu-Khan et al., " β -Secretase cleavage of Alzheimer's amyloid precursor protein by the transmembrane aspartic protease BACE," *Science*, vol. 286, no. 5440, pp. 735–741, 1999.
- [36] F. Colciaghi, B. Borroni, M. Zimmermann et al., "Amyloid precursor protein metabolism is regulated toward alpha-secretase pathway by *Ginkgo biloba* extracts," *Neurobiology of Disease*, vol. 16, no. 2, pp. 454–460, 2004.
- [37] M. Nistor, M. Don, M. Parekh et al., "Alpha- and beta-secretase activity as a function of age and beta-amyloid in Down syndrome and normal brain," *Neurobiology of Aging*, vol. 28, no. 10, pp. 1493–1506, 2007.
- [38] Chinese Pharmacopoeia Commission, *Pharmacopoeia of the People's Republic of China*, Chemical Industry Press, 2010.
- [39] J. M. Warrick, H. Y. E. Chan, G. L. Gray-Board, Y. Chai, H. L. Paulson, and N. M. Bonini, "Suppression of polyglutamine-mediated neurodegeneration in *Drosophila* by the molecular chaperone HSP70," *Nature Genetics*, vol. 23, no. 4, pp. 425–428, 1999.
- [40] F. K. M. Lee, A. K. Y. Wong, Y. W. Lee, O. W. Wan, H. Y. Edwin Chan, and K. K. K. Chung, "The role of ubiquitin linkages on α -synuclein induced-toxicity in a *Drosophila* model of Parkinson's disease," *Journal of Neurochemistry*, vol. 110, no. 1, pp. 208–219, 2009.
- [41] S. L. A. Wong, M. C. Wing, and H. Y. E. Chan, "Sodium dodecyl sulfate-insoluble oligomers are involved in polyglutamine degeneration," *FASEB Journal*, vol. 22, no. 9, pp. 3348–3357, 2008.
- [42] C. Xiao, J. Li, X. Dong et al., "Anti-oxidative and TNF- α suppressive activities of puerarin derivative (4AC) in RAW264.7 cells and collagen-induced arthritic rats," *European Journal of Pharmacology*, vol. 666, no. 1–3, pp. 242–250, 2011.
- [43] R. C. Choi, Z. Jiang, H. Q. Xie et al., "Anti-oxidative effects of the biennial flower of *Panax notoginseng* against H₂O₂-induced cytotoxicity in cultured PC12 cells," *Chinese Medicine*, vol. 5, article 38, 2010.
- [44] A. Boldyrev, E. Bulygina, T. Leinsoo, I. Petrushanko, S. Tsubone, and H. Abe, "Protection of neuronal cells against reactive oxygen species by carnosine and related compounds," *Comparative Biochemistry and Physiology B*, vol. 137, no. 1, pp. 81–88, 2004.
- [45] J. B. Duffy, "GAL4 system in *Drosophila*: a fly geneticist's Swiss army knife," *Genesis*, vol. 34, no. 1-2, pp. 1–15, 2002.
- [46] G. R. Jackson, I. Salecker, X. Dong et al., "Polyglutamine-expanded human huntingtin transgenes induce degeneration of *Drosophila* photoreceptor neurons," *Neuron*, vol. 21, no. 3, pp. 633–642, 1998.
- [47] Y. K. Hong, S. H. Park, S. Lee et al., "Neuroprotective effect of SuHeXiang Wan in *Drosophila* models of Alzheimer's disease," *Journal of Ethnopharmacology*, vol. 134, no. 3, pp. 1028–1032, 2011.
- [48] D. Ling, H. J. Song, D. Garza, T. P. Neufeld, and P. M. Salvaterra, "A β 42-induced neurodegeneration via an age-dependent autophagic-lysosomal injury in *Drosophila*," *PLoS ONE*, vol. 4, no. 1, Article ID e4201, 2009.
- [49] L. M. Luheshi, G. G. Tartaglia, A. C. Brorsson et al., "Systematic in vivo analysis of the intrinsic determinants of amyloid beta pathogenicity," *PLoS Biology*, vol. 5, no. 11, p. e290, 2007.
- [50] J. Van De Goor and R. B. Kelly, "Association of *Drosophila* cysteine string proteins with membranes," *FEBS Letters*, vol. 380, no. 3, pp. 251–256, 1996.
- [51] B. L. Apostol, A. Kazantsev, S. Raffioni et al., "A cell-based assay for aggregation inhibitors as therapeutics of polyglutamine-repeat disease and validation in *Drosophila*," *Proceedings of the National Academy of Sciences of the United States of America*, vol. 100, no. 10, pp. 5950–5955, 2003.
- [52] J. Wang, C. M. Pflieger, L. Friedman et al., "Potential application of grape derived polyphenols in huntington's disease," *Translational Neuroscience*, vol. 1, no. 2, pp. 95–100, 2010.

- [53] L. A. Greene and A. S. Tischler, "Establishment of a noradrenergic clonal line of rat adrenal pheochromocytoma cells which respond to nerve growth factor," *Proceedings of the National Academy of Sciences of the United States of America*, vol. 73, no. 7, pp. 2424–2428, 1976.
- [54] S. L. Xu, R. C. Choi, K. Y. Zhu et al., "Isorhamnetin, a flavonol aglycone from Ginkgo biloba L., induces neuronal differentiation of cultured PC12 cells: potentiating the effect of nerve growth factor," *Evidence-Based Complementary and Alternative Medicine*, vol. 2012, Article ID 278273, 11 pages, 2012.
- [55] M. C. Chuang, H. Y. Lai, J. A. Annie Ho, and Y. Y. Chen, "Multifunctional microelectrode array (mMEA) chip for neural-electrical and neural-chemical interfaces: characterization of comb interdigitated electrode towards dopamine detection," *Biosensors and Bioelectronics*, vol. 41, pp. 602–607, 2013.
- [56] A. M. Wang, Y. Miyata, S. Klinedinst et al., "Activation of Hsp70 reduces neurotoxicity by promoting polyglutamine protein degradation," *Nature Chemical Biology*, vol. 9, no. 2, pp. 112–118, 2013.
- [57] S. B. Lee, C. K. Kim, K. H. Lee, and J. Y. Ahn, "S-nitrosylation of B23/nucleophosmin by GAPDH protects cells from the SIAH1-GAPDH death cascade," *Journal of Cell Biology*, vol. 199, no. 1, pp. 65–76, 2012.
- [58] B. Jayaprakasam, K. Padmanabhan, and M. G. Nair, "Withanamides in Withania somnifera fruit protect PC-12 cells from β -amyloid responsible for Alzheimer's disease," *Phytotherapy Research*, vol. 24, no. 6, pp. 859–863, 2010.
- [59] H. J. Kim, K. D. Moon, D. S. Lee, and S. H. Lee, "Ethyl ether fraction of Gastrodia elata Blume protects amyloid β peptide-induced cell death," *Journal of Ethnopharmacology*, vol. 84, no. 1, pp. 95–98, 2003.
- [60] S. Shimohama, "Apoptosis in Alzheimer's disease: an update," *Apoptosis*, vol. 5, no. 1, pp. 9–16, 2000.
- [61] J. Yuan and B. A. Yankner, "Apoptosis in the nervous system," *Nature*, vol. 407, no. 6805, pp. 802–809, 2000.
- [62] M. Ankarcrona and B. Winblad, "Biomarkers for apoptosis in Alzheimer's disease," *International Journal of Geriatric Psychiatry*, vol. 20, no. 2, pp. 101–105, 2005.
- [63] F. M. LaFerla, K. N. Green, and S. Oddo, "Intracellular amyloid- β in Alzheimer's disease," *Nature Reviews Neuroscience*, vol. 8, no. 7, pp. 499–509, 2007.
- [64] J. T. Coyle, D. L. Price, and M. R. DeLong, "Alzheimer's disease: a disorder of cortical cholinergic innervation," *Science*, vol. 219, no. 4589, pp. 1184–1190, 1983.
- [65] M. P. Mattson, W. A. Pedersen, W. Duan, C. Culmsee, and S. Camandola, "Cellular and molecular mechanisms underlying perturbed energy metabolism and neuronal degeneration in Alzheimer's and Parkinson's diseases," *Annals of the New York Academy of Sciences*, vol. 893, pp. 154–175, 1999.
- [66] L. Annunziato, S. Amoroso, A. Pannaccione et al., "Apoptosis induced in neuronal cells by oxidative stress: role played by caspases and intracellular calcium ions," *Toxicology Letters*, vol. 139, no. 2-3, pp. 125–133, 2003.
- [67] T. Y. Jung, S. I. Suh, H. Lee et al., "Protective effects of several components of Gastrodia elata on lipid peroxidation in gerbil brain homogenates," *Phytotherapy Research*, vol. 21, no. 10, pp. 960–964, 2007.
- [68] D. A. Butterfield and C. M. Lauderback, "Lipid peroxidation and protein oxidation in Alzheimer's disease brain: potential causes and consequences involving amyloid β -peptide-associated free radical oxidative stress," *Free Radical Biology and Medicine*, vol. 32, no. 11, pp. 1050–1060, 2002.
- [69] T. Finkel and N. J. Holbrook, "Oxidants, oxidative stress and the biology of ageing," *Nature*, vol. 408, no. 6809, pp. 239–247, 2000.
- [70] E. J. Shin, J. H. Bach, T. T. L. Nguyen et al., "Gastrodia elata Bl attenuates methamphetamine-induced Dopaminergic toxicity via inhibiting oxidative burdens," *Current Neuropharmacology*, vol. 9, no. 1, pp. 118–121, 2011.
- [71] Y. L. Ji, W. J. Young, S. K. Hyo, H. Moon, S. S. Sang, and J. K. Chang, "Anti-inflammatory action of phenolic compounds from Gastrodia elata root," *Archives of Pharmacological Research*, vol. 29, no. 10, pp. 849–858, 2006.
- [72] I. S. Kim, D. K. Choi, and H. J. Jung, "Neuroprotective effects of vanillyl alcohol in gastrodia elata blume through suppression of oxidative stress and anti-apoptotic activity in toxin-induced dopaminergic MN9D cells," *Molecules*, vol. 16, no. 7, pp. 5349–5361, 2011.
- [73] C. C. Teo, S. N. Tan, J. W. H. Yong, C. S. Hew, and E. S. Ong, "Evaluation of the extraction efficiency of thermally labile bioactive compounds in Gastrodia elata Blume by pressurized hot water extraction and microwave-assisted extraction," *Journal of Chromatography A*, vol. 1182, no. 1, pp. 34–40, 2008.
- [74] Y. Wang, S. Lin, M. Chen et al., "Chemical constituents from aqueous extract of Gastrodia elata," *China Journal of Chinese Materia Medica*, vol. 37, no. 12, pp. 1775–1781, 2012.
- [75] C. J. Bulpitt, Y. Li, P. F. Bulpitt, and J. Wang, "The use of orchids in Chinese medicine," *Journal of the Royal Society of Medicine*, vol. 100, no. 12, pp. 558–563, 2007.
- [76] C. R. Wu, M. T. Hsieh, S. C. Huang, W. H. Peng, Y. S. Chang, and C. F. Chen, "Effects of Gastrodia elata and its active constituents on scopolamine-induced amnesia in rats," *Planta Medica*, vol. 62, no. 4, pp. 317–321, 1996.
- [77] M. T. Hsieh, C. R. Wu, and C. F. Chen, "Gastrodin and p-hydroxybenzyl alcohol facilitate memory consolidation and retrieval, but not acquisition, on the passive avoidance task in rats," *Journal of Ethnopharmacology*, vol. 56, no. 1, pp. 45–54, 1997.
- [78] C. R. Wu, M. T. Hsieh, and J. Liao, "p-Hydroxybenzyl alcohol attenuates learning deficits in the inhibitory avoidance task: involvement of serotonergic and dopaminergic systems," *Chinese Journal of Physiology*, vol. 39, no. 4, pp. 265–273, 1996.
- [79] J. L. Juang and S. D. Carlson, "Analog of vertebrate anionic sites in blood-brain interface of larval Drosophila," *Cell and Tissue Research*, vol. 277, no. 1, pp. 87–95, 1994.
- [80] T. Stork, D. Engelen, A. Krudewig, M. Silies, R. J. Bainton, and C. Klämbt, "Organization and function of the blood-brain barrier in Drosophila," *Journal of Neuroscience*, vol. 28, no. 3, pp. 587–597, 2008.
- [81] M. R. Freeman and J. Doherty, "Glial cell biology in Drosophila and vertebrates," *Trends in Neurosciences*, vol. 29, no. 2, pp. 82–90, 2006.
- [82] R. Daneman and B. A. Barres, "The blood-brain barrier—lessons from moody flies," *Cell*, vol. 123, no. 1, pp. 9–12, 2005.
- [83] Q. Wang, G. Chen, and S. Zeng, "Distribution and metabolism of gastrodin in rat brain," *Journal of Pharmaceutical and Biomedical Analysis*, vol. 46, no. 2, pp. 399–404, 2008.
- [84] Q. Wang, G. Chen, and S. Zeng, "Pharmacokinetics of Gastrodin in rat plasma and CSF after i.n. and i.v.," *International Journal of Pharmaceutics*, vol. 341, no. 1-2, pp. 20–25, 2007.



Hindawi
Submit your manuscripts at
<http://www.hindawi.com>

