



## Clinical presentation of exclusive cystic fibrosis lung disease

Inez Bronsveld, Jan Bijman, Frauke Mekus, Manfred Ballmann, Henk J Veeze and Burkhard Tümmler

*Thorax* 1999;54;278-281

---

Updated information and services can be found at:  
<http://thorax.bmj.com/cgi/content/full/54/3/278>

---

*These include:*

### References

This article cites 21 articles, 11 of which can be accessed free at:  
<http://thorax.bmj.com/cgi/content/full/54/3/278#BIBL>

3 online articles that cite this article can be accessed at:  
<http://thorax.bmj.com/cgi/content/full/54/3/278#otherarticles>

### Email alerting service

Receive free email alerts when new articles cite this article - sign up in the box at the top right corner of the article

---

### Topic collections

Articles on similar topics can be found in the following collections  
[Other respiratory medicine](#) (1056 articles)

---

### Notes

---

To order reprints of this article go to:  
<http://www.bmjournals.com/cgi/reprintform>

To subscribe to *Thorax* go to:  
<http://www.bmjournals.com/subscriptions/>

## Case report

## Clinical presentation of exclusive cystic fibrosis lung disease

Inez Bronsveld, Jan Bijman, Frauke Mekus, Manfred Ballmann, Henk J Veeze, Burkhard Tümmler

## Abstract

**The diagnosis of cystic fibrosis (CF) is based on the occurrence of two mutations in the cystic fibrosis transmembrane conductance regulator (CFTR) gene and on assays that measure the basic defect of abnormal chloride transport in the affected organs. However, in cases of atypical CF not all diagnostic tests may be positive. We present a patient with an atypical CF phenotype in whom the only presenting symptom was severe CF-like lung disease substantiated by an abnormal nasal potential difference. Genetic analysis showed that the patient was a symptomatic heterozygote, which suggests that one lesion in the CFTR gene may be sufficient to cause CF-like lung disease.**

(Thorax 1999;54:278–281)

Keywords: cystic fibrosis; atypical cystic fibrosis; nasal potential difference; genetics

Departments of  
Paediatrics and Cell  
Biology, Erasmus  
University Rotterdam,  
Rotterdam,  
The Netherlands  
J Bijman  
I Bronsveld

Department of  
Neonatology, Sophia  
Children's Hospital,  
Rotterdam,  
The Netherlands  
H J Veeze

Department of  
Paediatrics and the  
Clinical CF Research  
Group, Medizinische  
Hochschule Hannover,  
D-30623 Hannover,  
Germany  
M Ballmann  
F Mekus  
B Tümmler

Correspondence to:  
Dr I Bronsveld.

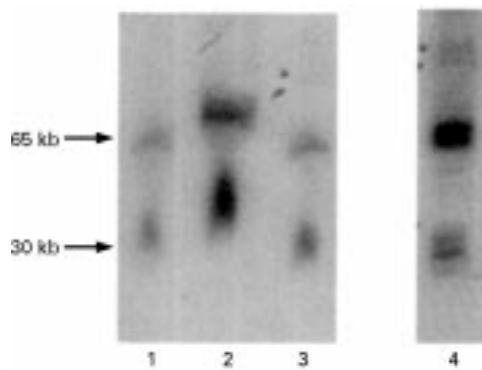
Received 6 April 1998  
Returned to author  
23 July 1998  
Revised manuscript received  
9 October 1998  
Accepted for publication  
12 October 1998

Typical cystic fibrosis (CF) is caused by two lesions in the cystic fibrosis transmembrane conductance regulator (*CFTR*) gene which give rise to a generalised exocrine disease of the respiratory, gastrointestinal, reproductive, and hepatobiliary tracts.<sup>1</sup> The protein product of the *CFTR* gene is a chloride channel expressed in the apical membrane of epithelial cells<sup>2</sup> so diagnostic tests that measure the chloride conductance in exocrine epithelia—for example, the pilocarpine iontophoresis sweat test,<sup>3</sup> intestinal current measurement (ICM),<sup>4</sup> and nasal potential difference (NPD)<sup>5–6</sup>—have abnormal values in cases of typical CF. Atypical cases of CF have a different clinical presentation with pancreatic sufficiency, mild bronchitis, nasal polyposis, congenital bilateral absence of the vas deferens (CBAVD), a borderline sweat test, or ICM values which point to low residual chloride secretion in intestinal tissue either by *CFTR* or an alternative chloride channel.<sup>7–10</sup> We present a case characterised exclusively by severe lung disease in whom other organs typically involved in CF were not affected and who failed to show a defect in chloride transport.

## Patient history

The 34 year old patient was the third child of Caucasian first generation cousins. The first

child was born preterm with meconium ileus and died at day 10. The second child died during infancy at six months and CF was suspected at necropsy. Our patient suffered from chronic nasal polyposis which had led to 13 polypectomies between the age of five and 23 years. By the age of 15 years she was referred to a chest physician because of shortness of breath during sports activity. Clubbing, sub-normal lung function, and decreased exercise tolerance were noted. The diagnosis of CF was proposed because of the typical pulmonary manifestations but was discarded when normal sweat electrolyte concentrations were found. The differential diagnosis of allergy as the underlying disease was excluded by normal IgE skin prick tests and normal serum levels of specific IgE. Immotile cilia syndrome was excluded by the normal microscopic appearance of biopsy specimens of nasal cilia. Since adolescence she had been underweight (below 3rd percentile) and had recurrent lower airway infections. Over the years increased sputum production and chronic cough became a clinical problem. A lung biopsy specimen in 1984 showed a histological pattern consistent with CF (bronchiectasis with localised purulent bronchitis and surrounding fibrosis). Cultures of throat swabs or sputum were often positive for *Staphylococcus aureus* (>90% of samples) but never for *Pseudomonas aeruginosa*. However, the specific anti-*P. aeruginosa* oprF IgG titre was positive, indicating that she had been exposed to *P. aeruginosa*. Bronchodilators and intermittent antibiotics were prescribed but the patient generally discontinued medication after a few days, even during acute respiratory tract infections. At the age of 23 her lung function was reduced (vital capacity 1.5 l (48% predicted)), her chest radiograph had a Chrispin-Norman score of 20, grade 3 (range 0–38), her height was at the 25th percentile and weight below the 3rd percentile. However, her pancreatic function was sufficient as shown by normal chymotrypsin levels in 1986, 1992, 1995, normal stool elastase levels (386 mg/g) in 1995, and by ultrasound investigation of the pancreas. She had never received pancreatic enzymes or vitamin supplements. Serum levels of vitamins (vitamin A 370 µg/l, vitamin E 11 mg/l), bilirubin and liver enzymes were always in the normal range. Moreover, in



**Figure 1** Autoradiogram of genomic *ApaI* digestions probed with *CFTR* cDNA (exon 7–24). No anomalous band pattern is seen for the sample from the patient (lane 1). For comparison, lane 4 shows the probe reactive fragments from a specimen which carries a deletion in one *CFTR* allele. *ApaI* cleaved fragments were separated in a CHEF-DR<sup>TM</sup> cell at 5.6 V/cm in 1% agarose gels (0.5 TBE buffer, 10°C). Pulse times were linearly increased in two ramps from 5 to 20 s in 18 hours and from 5 to 90 s in 20 hours.

repetitive pilocarpine iontophoresis sweat tests performed since she was 11 years old the sweat electrolyte levels were always normal (range 7–32 mEq/l).

### Methods

This study was approved by the medical ethical committees of the Dutch and German participating hospitals and informed consent was obtained from the patient. All chemicals were obtained from the Sigma Chemical Co, St Louis, Missouri, USA.

#### ANALYSIS OF THE *CFTR* GENE

The promoter (–3.8 to –0.3 kb) and coding regions and the exon flanking intron sequences of the *CFTR* gene were screened for mutations by single strand conformation polymorphism (SSCP) analysis<sup>11,12</sup> and, in the case of the appearance of non-wild type band patterns in the high resolution SSCP gel, by subsequent sequencing.<sup>13</sup> Deletions in the *CFTR* gene were sought by repeated Southern hybridisations of macrorestriction blots with *CFTR* cDNA probes encoding exon 1, exons 7–24, or the second nucleotide binding fold (codons 1202–1422). Preparation of unshered genomic DNA from fresh blood, complete restriction digestions with *ApaI*, *EagI*, *FspI*, *SaII* or *XhoI*, pulsed field

gel electrophoresis, blotting and hybridisation followed protocols 1, 5, 7, 8 and 9 of Bautsch *et al.*<sup>14</sup> The intragenic *CFTR* haplotype was determined for the sequence alterations T854T and M470V,<sup>15,16</sup> the splice site polymorphism in intron 8 (TG)<sub>m</sub>T<sub>n</sub><sup>11,17</sup> and the microsatellites IVS8CA, IVS17bCA, IVS17bTA.<sup>18,19</sup>

#### NASAL POTENTIAL DIFFERENCE (NPD)

NPD was measured using an adaptation of the method described previously.<sup>5</sup> In short, the nasal turbinate was superfused (1.7 ml/min) for periods of three minutes with the following solutions (mol/l): saline to measure baseline PD; amiloride (10<sup>–4</sup>) to block Na<sup>+</sup> channels; gluconate with amiloride to assess spontaneous Cl<sup>–</sup> conductance; isoprenaline (10<sup>–4</sup>) in gluconate with amiloride to evaluate the presence of *CFTR*, and ATP (10<sup>–3</sup>) in isoprenaline/gluconate+amiloride solution to open non-*CFTR* Cl<sup>–</sup> channels. To access the submucosal space a small needle (25 gauge) was inserted into the forearm and filled with saline. Both the needle and superfusion catheter were connected to a high input resistance voltage measuring device via salt bridges and Ag/AgCl electrodes. The saline solution consisted of (mmol/l): NaCl (120), Na gluconate (25), K gluconate (5), NaH<sub>2</sub>PO<sub>4</sub> (0.4), Na<sub>2</sub>HPO<sub>4</sub> (2.4). In the gluconate solution NaCl was replaced by Na gluconate (145). All solutions were adjusted to pH 7.4.

#### INTESTINAL CURRENT MEASUREMENT (ICM)

The method used to study ICM has been described previously.<sup>4</sup> Freshly obtained rectal biopsy specimens were mounted in saline solution in the Ussing chamber (aperture 1.2 mm). After stabilising the basal short circuit current (I<sub>sc</sub>) the tissue was exposed to the following inhibitors and secretagogues (mol/l) to the mucosal (M) or serosal (S) side: glucose (10<sup>–2</sup>, M+S); amiloride (10<sup>–4</sup>, M); indomethacin (10<sup>–5</sup>, M+S) to inhibit basal Cl<sup>–</sup> secretion by inhibiting the endogenous prostaglandin formation; carbachol (10<sup>–4</sup>, S), a Ca<sup>2+</sup> linked secretagogue; forskolin (10<sup>–5</sup>, M+S) + 8-bromo cyclic adenosine monophosphate (cAMP, 10<sup>–3</sup>, M+S) to open Cl<sup>–</sup> channels by activation of a cAMP-dependent protein kinase and phosphorylation of specific membrane proteins; 4,4'-diisothiocyanatostilbene-2,2'-disulphonic acid (DIDS, 2.10<sup>–4</sup>, M) to inhibit Ca<sup>2+</sup> dependent Cl<sup>–</sup> secretion; and histamine (5.10<sup>–4</sup>, S) to reactivate the Ca<sup>2+</sup> activated pathway.

### Results

#### *CFTR* GENETICS

Despite the familial consanguinity, the patient was heterozygous at the *CFTR* locus which is shown by the different number of (TA)<sub>n</sub> repeats (n = 30, 34) for the microsatellite at the locus IVS17bTA and her heterozygosity for a rare *CFTR* mutation. She was homozygous (TG)<sub>12</sub>T<sub>7</sub>-2-1 for the *CFTR* haplotype (TG)<sub>m</sub>T<sub>n</sub>-M470V-T854T. The combination of the TG<sub>12</sub> repeat with the T<sub>7</sub> allele and the V470 *CFTR* isoform are known to decrease significantly the amount and chloride channel activity of *CFTR*.<sup>16</sup> After all *CFTR* exons and flanking intron sequences and most of the promoter

**Table 1** Electrophysiological results for the study patient. Mean (SD) values for a control group and a group of patients with CF are given for comparison

	Control group	Study patient	CF group
Nasal potential difference (mV)	n = 25		n = 23
baseline and ΔPD after addition of:			
baseline	–24 (11)	–52	–45 (10)
amiloride	+10 (6)	+21	+21 (9)
Cl <sup>–</sup> free solution	–15 (10)	–3	–1 (5)
isoprenaline	–8 (4)	–4	–2 (3)
ATP	–1 (3)	0	–1 (3)
Intestinal current measurement (μA/cm <sup>2</sup> )	n = 50		n = 51
ΔI <sub>sc</sub> after addition of:			
amiloride	–8.7 (11)	–4.9	–8.7 (11)
carbachol	38.5 (23)	45.5	–5.3 (10)
histamine (after DIDS incubation)	33.0 (26)	19.4	–5.0 (10)

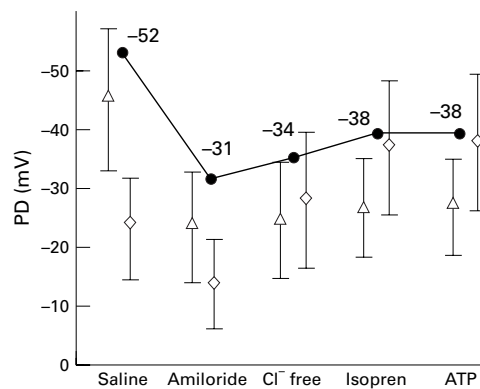


Figure 2 Nasal potential difference (PD) measurements of the patient (●) and mean (SD) PD values of 25 controls (◇) and 23 patients with CF (△) following superfusion with saline solution, amiloride ( $10^{-4}$  M) in saline solution, Cl<sup>-</sup> free solution with amiloride, isoprenaline ( $10^{-4}$  M) in Cl<sup>-</sup> free solution with amiloride, and ATP ( $10^{-3}$  M) in Cl<sup>-</sup> free solution with amiloride and isoprenaline.

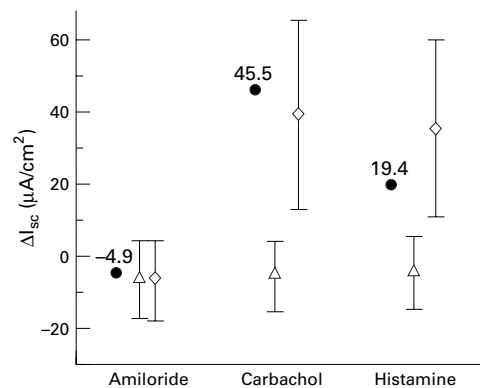


Figure 3 Measurements of intestinal current expressed as changes in short circuit current ( $I_{sc}$ ) of the patient (●) and mean (SD)  $I_{sc}$  of 50 controls (◇) and 51 patients with CF (△) following the addition of amiloride, carbachol, and exposure to 4,4'-diisothiocyanatostilbene-2,2'-disulphonic acid (DIDS) + histamine.

area up to -4 kb had been screened by SSCP, one molecular lesion (the splice site consensus transition 1898+3 A->G) was identified. A pancreatic insufficient child with CF at our clinic is homozygous for this condition and exhibited the typical pulmonary and gastrointestinal manifestations of CF indicating that 1898+3 A->G is a CF-causing lesion. No anomalous bands were seen in autoradiograms of macrorestriction blots probed with CFTR cDNAs, indicating that the two CFTR alleles of our patient do not carry any major genomic alteration (fig 1).

#### DIAGNOSTIC ASSESSMENT

On the day of electrophysiological investigation at the age of 32 she was underweight (below the 3rd percentile with a body mass index of 17 kg/m<sup>2</sup>) and her lung function was severely reduced (FEV<sub>1</sub> 0.39 l (14% predicted), FVC 1.23 l (38% predicted)). At this time she was treated with continuous oxygen and showed severe clubbing. Electrophysiological measurements were carried out by assessing the presence of chloride conductance in her airway and intestinal epithelium (table 1). The basal NPD was -52 mV (fig 2). In the presence of amiloride the PD depolarised to -31 mV, a

decrease of 40%. Superfusion of gluconate in the presence of amiloride resulted in a net response of -3 mV, indicating subnormal Cl<sup>-</sup> conductance. With isoprenaline, which opens CFTR Cl<sup>-</sup> channels, only a small response of -4 mV was obtained which suggested that few CFTR channels are present. No ATP response, which is usually indicative of the presence of alternative Cl<sup>-</sup> channels,<sup>20</sup> was seen in the airway tissue.

In previous ICM studies carbachol has provoked a negative reversed  $I_{sc}$  in rectal tissue of patients with CF, sometimes followed by a positive residual response indicating the presence of residual Cl<sup>-</sup> secretion. In our patient the ICM showed a Cl<sup>-</sup> secretory current in the normal range on addition of carbachol (fig 3). DIDS, which inhibits the alternative pathway of Ca<sup>2+</sup> activated Cl<sup>-</sup> currents, did not influence the Cl<sup>-</sup> current, suggesting the presence of normal CFTR mediated chloride conductance in the intestine.

#### Discussion

The clinical and diagnostic features presented by this case are conflicting in terms of the expression of the basic defect in different tissues. In typical CF defective electrolyte transport in the sweat gland, intestinal and airway epithelium is shown by a pathological outcome of the sweat test, ICM and NPD. In our case, however, the sweat chloride concentration and ion flow in the intestine were normal while the NPD values were abnormally high. Pathologically raised NPD values have so far only been found in CF and not in any other lung disease with related clinical manifestations such as  $\alpha_1$ -antitrypsin deficiency, immotile cilia syndrome, or congenital bronchiectasis.<sup>21</sup> As well as a high baseline nasal PD, the patient's gluconate and isoprenaline response were also in the CF range. However, they do point to the presence of little residual CFTR Cl<sup>-</sup> permeability in her respiratory epithelium. The clinical symptoms of our patient, such as progressive obstructive bronchitis and bronchiectasis, sputum production, and pathological bacterial flora, are typical of CF and she has been permanently on oxygen since the age of 30. This could explain her anorexic status since there is no sign of malabsorption or gastrointestinal disease, as confirmed by normal vitamin A and E levels, pancreatic sufficiency, and a normal ICM. This highly discordant expression of the basic defect in different tissues is described here for the first time: CFTR function was unaffected in gastrointestinal tissue whereas in airway tissue the abnormally low Cl<sup>-</sup> conductance can only be accounted for by defective epithelial Cl<sup>-</sup> transport. Other cases of CF with normal sweat test results and pulmonary disease, as described for patients carrying the A455E or 3849+10 kb C->T mutation,<sup>7 8 22 23</sup> can clearly be diagnosed by an abnormal ICM even when there are few or no clinical signs of gastrointestinal involvement.<sup>10</sup>

The CFTR gene was screened for disease causing lesions in all exons and flanking intron sequences and on one chromosome a sequence alteration in a donor splice site was found



(1898+3 A->G). This sequence alteration was first described in a compound heterozygous pancreatic sufficient patient (Ferrari *et al*, personal communication) and was found also in a pancreatic insufficient CF patient homozygous for this condition (see above). According to *CFTR* mutation analysis and the family anamnesis, our patient is a carrier for one *CFTR* mutation and hence should not express any CF symptoms. However, she carries an unfavourable combination of common intragenic polymorphisms. She is homozygous TG<sub>12</sub>T<sub>7</sub> for the TG<sub>m</sub>T<sub>n</sub> polymorphism at the intron 8 splice acceptor site, and the TG<sub>12</sub> repeat together with the T<sub>7</sub> stretch places the branch point nucleotide in an unfavourable position for splicing leading to 30% of exon 9<sup>\*</sup> *CFTR* transcript which are known to be translated in *CFTR* proteins that do not mature.<sup>16 24</sup> Moreover, she is homozygous for the V470 allele in exon 10. V470 *CFTR* proteins have a 1.7 fold decreased intrinsic chloride channel activity compared with M470 *CFTR* proteins.<sup>16</sup> These predisposing polymorphisms in the intragenic background decrease the expression and function of *CFTR*. Yet, they are present in both rectal and nasal tissue and cannot account for the unimpaired function of *CFTR* in the intestine while in the nasal tissue almost complete absence of Cl<sup>-</sup> conductance was found. However, the patient's consanguineous descent leads to a genome-wide overrepresentation of homozygous genotypes which may lead to further unfavourable combinations of factors that modify *CFTR* expression or lung function. As gastrointestinal disease is not present, we propose that the genetic background predisposes to severe lung disease caused by tissue specific regulatory elements which lead to the loss of *CFTR* function exclusively in the respiratory epithelium.

This work was supported by the Deutsche Forschungsgemeinschaft.

- 1 Welsh MJ, Tsui LC, Boat TF, *et al*. Cystic fibrosis. In: Scriver CR, Beaudet AL, Sly WS, Valle D, eds. *The metabolic and molecular basis of inherited disease*. New York: McGraw Hill, 1995: 3799-876.
- 2 Bear CE, Li CH, Kartner N, *et al*. Purification and functional reconstitution of the cystic fibrosis transmembrane conductance regulator (CFTR). *Cell* 1992;68:809-18.
- 3 Gibson LE, Cooke RE. A test for concentration of electrolytes in sweat in cystic fibrosis of the pancreas utilizing pilocarpine by iontophoresis. *Pediatrics* 1959;23:545-9.

- 4 Veeze HJ, Sinaasappel M, Bijman J, *et al*. Ion transport abnormalities in rectal suction biopsies from children with cystic fibrosis. *Gastroenterology* 1991;101:398-403.
- 5 Knowles MR, Carson JL, Collier AM, *et al*. Measurements of nasal transepithelial electrical potential differences in normal human subjects in vivo. *Am Rev Respir Dis* 1981;124:484-90.
- 6 Knowles MR, Paradiso AM, Boucher RC. In vivo nasal potential difference: techniques and protocols for assessing efficacy of gene transfer in cystic fibrosis. *Hum Gene Ther* 1995;6:445-55.
- 7 Gan KH, Veeze HJ, van den Ouweland AM, *et al*. A cystic fibrosis mutation associated with mild lung disease. *N Engl J Med* 1995;333:95-9.
- 8 Gilbert F, Li Z, Arzimanoglou I, *et al*. Clinical spectrum in homozygotes and compound heterozygotes inheriting cystic fibrosis mutation 3849 + 10kb C > T: significance for geneticists. *Am J Med Genet* 1995;58:356-9.
- 9 Kerem E, Rave-Harel N, Augarten A, *et al*. A cystic fibrosis transmembrane conductance regulator splice variant with partial penetrance associated with variable cystic fibrosis presentations. *Am J Respir Crit Care Med* 1997;155:1914-20.
- 10 Veeze HJ, Halley DJ, Bijman J, *et al*. Determinants of mild clinical symptoms in cystic fibrosis patients. *J Clin Invest* 1994;93:461-6.
- 11 Dörk T, Mekus F, Schmidt K, *et al*. More than 50 different *CFTR* mutations in a large group of German cystic fibrosis patients. *Hum Genet* 1994;94:533-42.
- 12 Ravnik-Glavcak M, Glavcak D, Dean M. Sensitivity of single strand conformation polymorphism and heteroduplex method for mutation detection. *Hum Mol Genet* 1994;3: 801-7.
- 13 Zielenski J, Rozmahel R, Bozon D, *et al*. Genomic sequence of the *CFTR* gene. *Genomics* 1991;10:214-28.
- 14 Bautsch W, Römling U, Schmidt KD, *et al*. Long-range restriction mapping of genomic DNA. In: Dear PH, ed. *Genome mapping—a practical approach*. Oxford: Oxford University Press, 1997: 281-313.
- 15 Dörk T, Neumann T, Wulbrand U, *et al*. Intra- and extragenic marker haplotypes of *CFTR* mutations in cystic fibrosis families. *Hum Genet* 1992;88:417-25.
- 16 Cuppens H, Lin W, Jaspers M, *et al*. Polyvariant mutant cystic fibrosis transmembrane conductance regulator genes. *J Clin Invest* 1998;101:487-96.
- 17 Teng H, Jorissen M, van Poppel H, *et al*. Increased proportion of exon 9 alternatively spliced *CFTR* transcript in vas deferens compared with nasal epithelial cells. *Hum Mol Genet* 1997;6:85-90.
- 18 Morral N, Estivill X. Multiplex amplification of three microsatellites within the *CFTR* gene. *Genomics* 1992;13: 1362-4.
- 19 Mekus F, Dörk T, Deufel T, *et al*. Analysis of microsatellites by direct blotting electrophoresis and chemiluminescence detection. *Electrophoresis* 1995;16:1886-8.
- 20 Knowles MR, Clarke LL, Boucher RC. Activation by extracellular nucleotides of chloride secretion in the airway epithelia of patients with cystic fibrosis. *N Engl J Med* 1991;325:533-8.
- 21 Knowles MR, Gatzky J, Boucher RC. Increased bioelectrical potential difference across respiratory epithelia in cystic fibrosis. *N Engl J Med* 1981;305:1489-95.
- 22 Dreyfus DH, Bethel R, Gelfand EW. Cystic fibrosis 3849+10kb C > T mutation associated with severe pulmonary disease and male fertility. *Am J Respir Crit Care Med* 1996;153:858-60.
- 23 Highsmith WE, Burch LH, Zhou Z, *et al*. A novel mutation in the cystic fibrosis gene in patients with pulmonary disease but normal sweat chloride concentrations. *N Engl J Med* 1994;331:974-80.
- 24 Strong TV, Wilkinson DJ, Mansoura MK, *et al*. Expression of an abundant alternatively spliced form of the cystic fibrosis transmembrane conductance regulator (CFTR) gene is not associated with a cAMP-activated chloride conductance. *Hum Mol Genet* 1993;2:225-30.