



Where, How, and When: Positioning Posttranslational Modification Within Type 1 Diabetes Pathogenesis

Rene J. McLaughlin¹ · Matthew P. Spindler¹ · Menno van Lummel¹ · Bart O. Roep^{1,2,3}

Published online: 11 May 2016

© The Author(s) 2016. This article is published with open access at Springerlink.com

Abstract Autoreactive T cells specific for islet autoantigens develop in type 1 diabetes (T1D) by escaping central as well as peripheral tolerance. The current paradigm for development of islet autoimmunity is just beginning to include the contribution of posttranslationally modified (PTM) islet autoantigens, for which the immune system may be ignorant rather than tolerant. As a result, PTM is the latest promising lead in the quest to understand how the break in peripheral tolerance occurs in T1D. However, it is not completely clear how, where, or when these modifications take place. Currently, only a few PTM antigens have been well-thought-out or identified in T1D, and methods for identifying and characterizing new PTM antigens are rapidly improving. This review will address both reported and potential new sources of modified islet autoantigens and discuss how islet neo-autoantigen generation may contribute to the development and progression of T1D.

Keywords Posttranslational modification · Autoimmune disease · Type 1 diabetes · Islet antigens · High-risk HLA

This article is part of the Topical Collection on *Immunology and Transplantation*

✉ Bart O. Roep
boroep@lumc.nl

¹ Department of Immunohematology and Blood Transfusion, Leiden University Medical Center, E3-Q, PO Box 9600, 2300 RC Leiden, The Netherlands

² Department of Diabetes Immunology, Diabetes & Metabolism Research Institute, Beckman Research Institute of City of Hope, Duarte, CA 91010, USA

³ Danish Diabetes Academy, Søndre Blvd. 29, 5000 Odense, Denmark

Introduction

Type 1 diabetes (T1D) is characterized as an autoimmune disease resulting from the loss of immune tolerance to beta cell autoantigens. However, if posttranslational modification (PTM) of beta cell proteins generates neo-autoantigens that the immune system is ignorant to, as the antigens may not have been present during thymic selection, then T1D could be a result of the immune system responding to essentially “foreign” proteins created by PTM. This may explain some instances of T1D development but probably not all, as a diverse immunological heterogeneity exists between patients in terms of immunogenetic background, islet autoantibodies, and islet autoreactive T cells [1]. This heterogeneity has important implications for guiding therapy, as the degree of cellular islet autoimmunity predicted the clinical outcome of both hematopoietic stem cell therapy and islet transplantation [2–4]. In these studies, the patient’s immune signature correlated with differential responsiveness to immune therapy, underscoring the importance of deciphering disease heterogeneity between patients. Exploring PTM has revealed new immunologically and clinically relevant neo-epitopes as targets for autoreactive T cells, has increased our understanding of disease heterogeneity, and may allow for more personalized therapeutic interventions [5•, 6].

The human proteome plays a role in shaping proper immune discrimination during thymic selection. Whereas the genome comprises 20–25,000 genes [7], the proteome is estimated to encompass over one million proteins [8]. Changes at the mRNA and transcriptional level increase the size of the transcriptome in relation to the genome [9, 10]; following this expansion, the many different PTMs increase the complexity of the human proteome relative to the genome and the transcriptome. PTM is a broad term encompassing many natural posttranslational processes within cells and tissues. These

include covalent attachment of small functional molecules (e.g., ubiquitination and phosphorylation), or chemical modifications of amino acids within proteins. Nature supplies 20 amino acids as the building blocks of human proteins, and this number increases to more than 140 building blocks after accounting for PTM through enzymatic modifications (e.g., deamidation, citrullination, glycosylation) and nonenzymatic (spontaneous) modifications (e.g., methylation, carbamylation, oxidation, nitration). In T1D, both citrullinated and deamidated autoantigens have been identified (Table 1), indicating a role for peptidylarginine deiminases (PADs) and tissue transglutaminase (tTG), respectively, in the generation of islet neo-autoantigens.

The involvement of PTM in the pathogenesis of T1D will be discussed by looking at where the cells and tissues regulate protein modification, how the modifications occur, and when during the disease process the modifications are important. This will identify avenues that the T1D community can follow in order to better understand PTM and start developing approaches for disease monitoring and therapeutic intervention.

Where: Dialogue Between Beta Cells and the Immune System

A direct association between beta cell destruction was established with the discovery of islet autoreactive CD8 T cells in insulinitic lesions from patients with T1D [11]. Islets from patients with T1D also had hyper-expression of HLA class I molecules, indicating that during insulinitis, beta cells

could be active in their own demise by becoming easier targets for pathogenic CD8 T cells [11]. Beta cells could be passive victims to autoimmune destruction (“Homicide” model) and/or actively contribute to their own demise (“Suicide” model), as was first conceived by Bottazzo [12]. Supporting the “beta cell suicide” model is data showing production of the chemokine CXCL10 within distressed islets and expression of the cognate receptor CXCR3 on CD8 T cells in insulinitic lesions in patients with T1D, indicating that the pancreas can actively recruit pathogenic CD8 T cells and communicate with the immune system [13].

When considering the impact of PTM on the development and progression of T1D, it is important to consider the location and local activity of the modifying enzymes involved. PTM in celiac disease (CD) occurs in the intestinal lumen at the site where key substrates, such as gliadin peptides, are concentrated. Tissue transglutaminase (tTG) activity is increased in the mucosal epithelium of patients with CD [14], and the ensuing cross talk between immune cells in the lamina propria during CD has been well studied [15]. In human islets, tTG is active during insulin secretion, acting on cytosolic, mitochondrial, and nuclear substrates [16]. Therefore, islets have the potential to generate neo-autoantigens through tTG-mediated deamidation. We recently confirmed that human islets generate neo-autoantigens; an inflammatory stimulus resulted in deamidation of the proinsulin C-peptide [17•]. T cells reactive to this deamidated C-peptide were found in patients with T1D [5••], linking neo-antigen generation in human islets with the induction of autoreactive T cells. tTG is also present in cells of the myeloid lineage [18]. Direct vesicular transfer of

Table 1 Posttranslational modifications in human autoimmune diseases

Type of modification	Antigen(s)	Relevance in autoimmune disease	References
Citrullination Methylation Palmitoylation Acetylation Sulfation	Myelin basis protein (MBP), myelin proteolipid protein (PLP), P-selectin glycoprotein ligand 1 (PSGL-1)	Multiple sclerosis	[62, 63] [64, 65] [66, 67] [68, 69] [70]
Deamidation	Gluten (gliadin)	Celiac disease	[71, 72]
Citrullination Carbamylation Glycosylation	Vimentin, vinculin, histones, apolipoproteins, fibrinogen, Ig	Rheumatoid arthritis	[73, 74] [75, 76] [75]
Deamidation Disulfide bridges Citrullination Oxidative modification	Preproinsulin, GAD65, collagen type II	Type 1 diabetes	[5••] [6] [29] [46, 47, 48•, 77]
Oxidative modification Sialylation	Beta2-glycoprotein 1	Antiphospholipid syndrome	[78, 79] [80]
Phosphorylation Deimination	Cytoplasmic proteins (e.g. Ro/SSA, La/SSB, nucleosomal DNA, histones)	Systemic Lupus Erythematosus	[81] [82] [83]

islet material to resident APC has been demonstrated in both mice and humans, suggesting that islet proteins can be deamidated by tTG during antigen processing within the APC [19]. Recent results extend these findings to T1D, as dendritic cells (DC) pulsed with native islet antigen 2 (IA-2) naturally processed and presented deamidated peptides from IA-2 [17•]. Thus, it appears that tTG activity in both islets and DC contributes to islet neo-epitope formation. Besides the diverse subcellular localization of tTG, it is also a secreted, extracellular protein important for cell-extracellular matrix interactions [20, 21]. However, the contribution of extracellular tTG to the deamidation of islet proteins within the pancreas has not yet been investigated. PAD expression and activity have not been investigated in human islets, but antigen presenting cells (APC), such as human monocytes and macrophages, contain both PAD2 and PAD4 transcripts and active PAD2 and PAD4, indicating that cells of the monocytic lineage have the potential to citrullinate self-proteins [22]. Mouse APC from both splenic and thymic tissue can citrullinate and present citrullinated peptides to activate epitope-specific CD4 T cells, a process requiring autophagy [23]. While not conclusive, these studies indicate that islet protein citrullination may occur in APC within human islets or in the draining lymph nodes.

How: Mechanisms of Posttranslational Modification in Type 1 Diabetes

Data on PTM of islet autoantigens is emerging (Table 1), and the crossover with other autoimmune diseases indicates that PTM may have clinical relevance for T1D. HLA binding is a key factor in the selection of processed (neo)epitopes presented by APC and beta cells. To bind HLA molecules, processed peptides must conform to specific HLA binding motifs. In T1D, different HLA molecules associated with disease have distinct peptide-binding preferences [24, 25]. Differences in HLA peptide-binding motifs and the ability to generate stable peptide-HLA complexes likely explain the striking differences in the genetic risk associated with different HLA genotypes. For example, the peptide binding repertoires of the molecular variants of the high-risk HLA-DQ2, DQ8, and DQ2/8 genotypes showed strong preferences for binding peptides with negatively charged residues [26]. As such, the genetic association of T1D with HLA-DQ can potentially be explained by the deamidating function of tTG, which creates more negatively charged peptides that can be exceptionally potent HLA-DQ binders. Indeed, deamidation of a naturally processed and presented PPI peptide enhanced binding to HLA-DQ2/8 molecules and specifically to DQ8*trans*, a heterodimeric HLA molecule composed of the DQ2 alpha and DQ8 beta chains, and patient T cell responses (interferon gamma) were increased after stimulation with the deamidated PPI

peptide [5••]. Deamidation of chromogranin A, a recently discovered antigen in T1D, also increased T cell interferon gamma in patients with T1D [27]. Interestingly, the HLA-DQ8*trans* molecule is also implicated in CD pathogenesis, as demonstrated by T cell cross-reactivity between HLA-DQ8 and DQ8*trans* [28]. Citrullinated GAD65 peptides displayed enhanced binding to HLA-DR4 and were recognized by autoreactive CD4 T cells isolated from patients with T1D [29]. Citrullinated glucose-regulated protein 78 was identified as a modified autoantigen in murine beta cells and was a target for autoreactive T cells in mice [30]. Citrullination could be increasing the binding affinity to predisposing HLA molecules by making the peptide more acidic, resulting in increased immunogenicity.

The common factor linking these modifications is the increase in HLA binding affinity that results from PTM. As such, stringent selection of a high-affinity TCR repertoire against modified islet proteins is likely to play a role in T1D pathogenesis. This has been shown in CD, where autoreactive CD4 T cells isolated from patients with CD expressed an HLA-DQ2 or HLA-DQ8-restricted, gluten peptide-specific immunodominant TCR, with high avidity for HLA-DQ-gluten peptide complexes. This concept might also bear relevance in RA pathogenesis [31–33].

When in the Disease Process Are PTM Important?

Given the overlapping HLA class II susceptibility haplotypes in CD and T1D, and the growing evidence that tTG can modify beta cell antigens, it is reasonable to frame our discussion of when PTM occurs in T1D after our understanding of CD, where deamidation of gluten peptides by tTG results in preferential loading onto predisposing HLA-DQ molecules and the activation of pathologic CD4 T cells [34]. In this model, deamidation and neo-epitope formation are required for disease and precede autoimmunity. In the case of T1D, it is conceivable that a precipitating event such as nonspecific inflammation, metabolic stress, smaller pancreas size [35], or a viral infection [36] activates modifying enzymes such as tTG in beta cells and within tissue resident APC, thereby generating modified beta cell proteins that are recognized by the immune system (Fig. 1). The link between CD and T1D goes beyond HLA-DQ susceptibility as a gluten-free diet was shown to prevent diabetes in the NOD mouse model and even resulted in remission in a 6-year-old child with T1D [37–40]. These positive effects, resulting from removing gluten from the diet, may relate to the impact of gluten on the composition of the intestinal microbiota, leading to increased gut permeability and subsequent activation of innate immunity and autoimmunity in the gut [37, 41, 42]. A relation between the intestinal microbiome and PTM of islet autoantigens, in particular through activation of tTG, remains to be established.

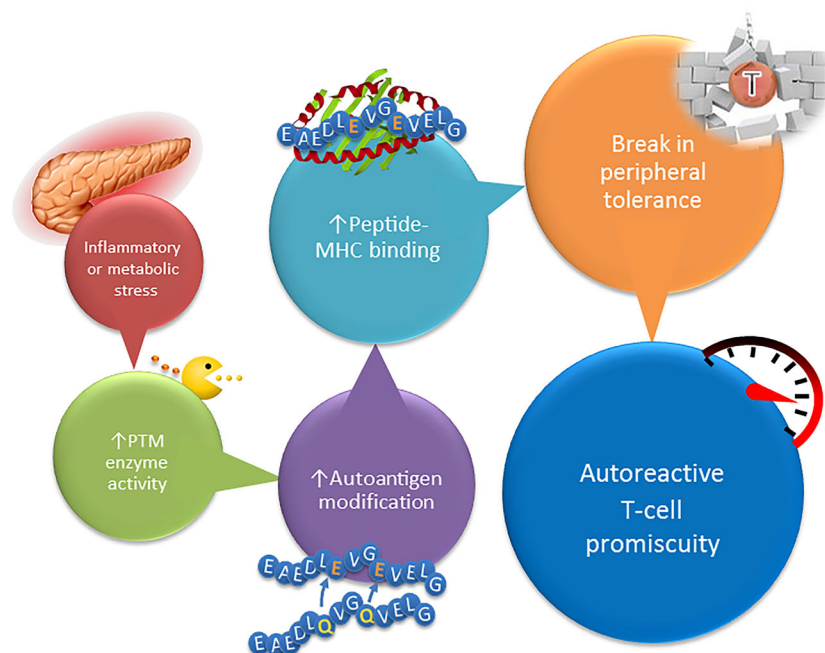


Fig. 1 Connecting posttranslational modification of islet proteins with the development of type 1 diabetes. This model begins with an as yet undefined environmental stressor. Lead candidates include metabolic stress, via changes in blood glucose concentration, and inflammatory stress, perhaps through viral infection or the close links between the pancreas and the gut. Stress results in a surge in PTM enzyme activity in islets and APC. This surge creates a larger pool of modified proteins, increasing the opportunity for modified peptides to be presented within the islet immune compartment. The genetic predisposition becomes

important, as the HLA molecules in question (DQ2 and DQ8) are exceptionally adept at binding deamidated epitopes. If the modified epitopes are treated as “foreign” by the immune system, then an immune response will ensue. This leads to a break in peripheral tolerance to unmodified islet antigens via promiscuous T cells that are able to recognize both their cognate deamidated epitope and the native sequence. Beta cells readily present unmodified antigens, so the autoreactive response quickly becomes destructive, resulting in overt diabetes

Emerging reports in human T1D indicate that modified antigens are preferentially recognized over their native counterparts. T cells derived from a T1D subject expanded in response to a modified insulin peptide containing a disulfide bond but did not elicit a response in healthy subjects [6]. CD4 T cells specific for deamidated and citrullinated GAD65 peptides were found at higher frequencies in patients compared to HLA-matched controls [29]. Our own observations demonstrated that T cell responsiveness to the deamidated versus the native form of a proinsulin peptide was greatly increased in recent onset patients [5••]. Given the low probability for thymic deletion of PTM protein-reactive T cells and the higher binding affinity of deamidated autoantigens for the predisposing HLA-DQ molecules, it is tempting to propose that modified beta cell antigens are being regarded as foreign by the immune system.

Intriguingly, attempts to generate T cell lines to native proinsulin failed, whereas T cell lines against deamidated proinsulin peptides expanded rapidly and, once generated, cross-reacted with native proinsulin, suggesting that priming may occur against modified self-protein that spreads to the native proteome [5••]. This evidence suggests that immune recognition of native autoantigens is preceded by recognition of

modified autoantigens and requires a degree of T cell promiscuity. Exactly when the onset and timeline of diabetes development is influenced by PTM is still unclear, but it is interesting to speculate that the degree to which an individual responds to modified antigens may correlate with an accelerated clinical manifestation of diabetes.

Which modified antigens are most immunogenic and when they become important for development of autoimmunity is also unclear. Insulin and GAD65 antibodies are usually the first antibodies detected in patient serum, and modifications of these antigens may play a particularly important role in disease initiation. Indeed, insulin and GAD65 exist in modified forms that elicit stronger immune responses in patients with T1D than the native epitopes [5••, 6, 29]. Individuals who are positive for multiple autoantibodies have an increased risk of developing diabetes and generally are diagnosed at an earlier age and require more aggressive insulin regimens [43]. Measuring autoantibodies specific for modified proteins is already used in RA as a highly sensitive diagnostic tool even prior to RA onset [44, 45]. Intriguingly, antibodies have been detected in serum of patients with T1D recognizing GAD65 modified by reactive oxygen species [46] and antibodies recognizing oxidative-modified collagen type II [47]. More

recently, antibodies to oxidative modified insulin were detected in patients with T1D that were negative for the presence of insulin autoantibodies [48•]. If PTM of islet proteins precludes T1D development, the presence of autoantibodies directed against neo-antigens in patients with T1D may provide an earlier and more robust biomarker for T1D development.

Clinical and Therapeutic Relevance of PTM

Current methods for predicting T1D during the preclinical phase rely on serum autoantibody levels. These serological markers have proved successful at identifying individuals most at risk, but only a subset of islet autoantibody-positive individuals progress to clinical diabetes [49]. Currently, there are no biomarkers to distinguish those individuals that develop disease versus those that remain asymptomatic. It is also becoming increasingly clear that T1D is a heterogeneous disease, and classical serological markers have not proven useful in stratifying the high-risk population [50, 51]. Furthermore, the relatively late appearance of classical autoantibodies in diabetes progression precludes any information on the timing of disease initiation [52].

Autoantibodies specific for modified islet proteins may address these limitations and be a more relevant clinical tool. If autoantibodies against neo-autoantigens mark events closer to the initiation of islet inflammation than classical autoantibodies, there could be an opportunity to intervene prophylactically rather than therapeutically to prevent the break in immune tolerance. The specificity for a particular neo-autoantigen could also help to characterize various forms of islet autoimmunity and help inform decisions on which therapeutic strategies would prove most promising for specific individuals. If clinical symptoms correlate with both the immunogenicity of a particular modification and the degree to which this modification occurs, measuring PTM could be used to predict those high-risk individuals most likely to progress to clinical diabetes.

Evidence of autoantibodies to neo-autoantigens is increasing; however, advances in mass spectrometry open the possibility of detecting modified molecules directly in patient serum. Analysis of the serum proteome for biomarker development has been limited by the extremely low abundance of relevant circulating proteins [53]. Advances in sample preprocessing have improved the detection limit, however, making it feasible to quantify changes in the serum proteome. This approach was used to identify increases in the levels of serum amyloid protein A (SAA), C-reactive protein (CRP), adiponectin, and insulin-like growth factor binding protein 2 in patients with T1D [53]. These innovations in proteomics and the recent advances in our understanding of PTM relevant to T1D warrant using the serum proteome to track molecular changes of islet peptides throughout the progression of T1D.

Considering PTM of islet proteins alongside markers of beta cell stress and/or destruction will vastly improve the resolution of preclinical disease progression, giving us the means to link autoimmune events with changes in islet pathology in patients.

PTM also hold promise for efforts aimed at (re)establishing peripheral tolerance to islet autoantigens. Peptide immunotherapy is currently progressing from preclinical models into phase I trials, based on observations that tolerogenic DC (tolDC) pulsed with islet peptide induce antigen-specific immune tolerance [54–56]. These therapeutic strategies could easily extend to include PTM islet peptides. Interestingly, how the peptide was delivered produced a differential regulatory response, as a peptide vaccine approach induced regulatory T cells, while peptide presented by tolDC resulted in IL-10-mediated regulation [54]. Recent results indicate that HLA-DQ2/8 restricted DC process and present both native and deamidated peptides derived from native islet autoantigens [17•]. This suggests that including PTM in a vaccine approach might be redundant, since introducing a native peptide may be sufficient to target T cells specific for both the native and deamidated forms. The fact that DC presented deamidated epitopes suggests this might be an additional regulatory mechanism for promoting peripheral tolerance and opens up the possibility that this process is defective in some patients [57].

There are still many questions on how best to exploit our emerging knowledge of PTM in T1D. For instance, which peptides should be considered for immunotherapy? Which conditions activate modifying enzymes that contribute to PTM? The infamous chicken versus the egg issue must also be considered. Do metabolic stress [58], reduced pancreas size [35], viral infection of beta cells [36], or perhaps even insulinitis [11] contribute to PTM? In these cases, PTM may be a consequence, rather than a cause of islet autoimmunity. As our understanding of the peptide-MHC-TCR interaction grows, we could envision a targeted vaccine strategy that is based on an individual's HLA genotype. Of course, it is also possible that different PTMs trigger autoimmunity in different individuals, even if they are HLA matched. Additional factors such as age, sex, and environmental contact could all influence the effectiveness of a vaccination regimen. The length of the peptide used for inducing tolerance should also be scrutinized carefully. If a peptide sequence is too short, it may directly associate with MHC molecules and evade internalization. This may be important considering our observation that DC can modify internalized peptide. Thus, the use of synthetic long peptides, such as those used for cancer therapy, may be a likely starting point [59].

It is also unclear whether different PTMs are important at different stages of disease or if PTMs collectively are most important at disease initiation. Despite these uncertainties, further investigation of PTM in the context of T1D will

increase our understanding of disease pathogenesis, which will undoubtedly stimulate new diagnostic and therapeutic concepts for intervention and prevention.

Challenges and Conclusions

To understand the pathogenesis of T1D, the postulate of immunological “ignorance” against neo-antigens as an underlying mechanism should be further investigated. It is essential to think “out of the box,” and several issues should be considered when investigating PTM of islet proteins and their role in immune activation in T1D.

Proteomic studies on pancreatic islets are of indispensable value to decipher PTM in the search toward therapeutic targets in T1D. Currently, mass spectrometry is the state-of-the-art technique to profile proteins in biological samples, and in the last decade, mass spectrometers have been improved in terms of sensitivity, resolution, and measurement speed. Identification of proteins in biological samples involves screening the obtained peptide spectra with peptide sequence databases (e.g., Mascot). We recommend adjusting the rules of engagement regarding proteome analysis for confident identification of PTM peptides. It is important to be preemptive in terms of which PTM to look for, as conventional peptide sequence screening does not include variable PTM, such as deamidation and citrullination. In this context, the Mascot score may have less importance, as PTM peptides might not be as abundant, meaning that identified PTM peptides with a low Mascot score should not be discounted too quickly. It may also be necessary to include individual disease-specific sequences, such as new splice variants and cross-linked products from endopeptides, if they are not yet included in databases such as Mascot.

Unraveling patient heterogeneity and creating a T1D “immunological barcode” would improve the efficacy of single and combination (synergistic) therapies for specific groups of patients (personalized medicine). Appreciation of disease heterogeneity has been underscored by finding that insulinitic lesions had varying degrees of islet infiltration and beta cell loss across affected organs [11]. Thus, considering the immunological heterogeneity and polygenetic nature of T1D, it is plausible that generation of neo-antigens does not take place uniformly, either within the pancreatic islets of one individual or amongst different individuals. Similarly, the same neo-antigens may not be equally important in initiating or exacerbating disease among different genetically predisposed individuals.

Biomarkers worthy of investigation include autoantibodies directed against neo-antigens. Autoantibodies have already proven to be useful in T1D research, autoantibodies against native insulin were associated with differential outcome of immunotherapy [60], and pancreas transplant recipients with autoantibodies to native GAD65 were better served with thymoglobulin induction therapy than daclizumab to reduce

their risk of rejection episodes [61]. Autoantibodies to posttranslationally modified insulin have been detected in patients with T1D, where autoreactivity to oxidized insulin in patients with T1D was more prevalent than native insulin autoantibodies [48]. However, additional studies are required to further elucidate the role of autoantibodies against PTM antigens in T1D pathogenesis and their possible role as early biomarkers for disease onset. It would be of interest to evaluate whether autoantibodies against neo-antigens are present in large cohorts of patients with T1D (recent-onset, longstanding, longitudinal) and in patients who are classified as autoantibody negative to the existing biomarkers (insulin, GAD65, Znt-8).

Ultimately, the real challenge is for researchers to constantly rethink the current dogma around T1D pathogenesis. The inclusion of PTM and neo-antigens will hopefully lead to a better understanding of autoimmune activation, disease progression, and regulation, validation of novel biomarkers, and development of successful immune therapies.

Acknowledgments Dr. Roep is member of the Danish Diabetes Academy. This work was supported by the Juvenile Diabetes Research Foundation (2-SRA-2014-295-Q-R), the European Union’s 7th Framework Programme (FP7/2007-2013) under grant agreement no. 241447 (NAIMIT), by a VICI grant of The Netherlands organization for scientific research (VICI, 918.86.611), an Expert Center Grant from the Dutch Diabetes Research Foundation/DON Foundation and the Bontius Foundation.

Compliance with Ethical Standards

Conflict of Interest Rene J. McLaughlin and Matthew P. Spindler declare no conflict of interest.

Menno van Lummel and Bart O. Roep have filed a patent on PTM of preproinsulin and IA-2.

Human and Animal Rights and Informed Consent All cited studies reported to have been conducted compliant with the relevant Ethical Guidelines. This article does not contain novel studies with human or animal subjects performed by any of the authors.

Open Access This article is distributed under the terms of the Creative Commons Attribution 4.0 International License (<http://creativecommons.org/licenses/by/4.0/>), which permits unrestricted use, distribution, and reproduction in any medium, provided you give appropriate credit to the original author(s) and the source, provide a link to the Creative Commons license, and indicate if changes were made.

References

Papers of particular interest, published recently, have been highlighted as:

- Of importance
- Of major importance

1. Woittiez NJ, Roep BO. Impact of disease heterogeneity on treatment efficacy of immunotherapy in Type 1 diabetes: different shades of gray. *Immunotherapy*. 2015;7(2):163–74. doi:10.2217/imt.14.104.

2. Lernmark A, Larsson HE. Immune therapy in type 1 diabetes mellitus. *Nat Rev Endocrinol*. 2013;9(2):92–103.
3. Skyles JS. Primary and secondary prevention of Type 1 diabetes. *Diabet Med*. 2013;30(2):161–9.
4. von Herrath M, Peakman M, Roep B. Progress in immune-based therapies for type 1 diabetes. *Clin Exp Immunol*. 2013;172(2):186–202.
5. van Lummel M, Duinkerken G, van Veelen PA, de Ru A, Cordfunke R, Zaldumbide A, et al. Posttranslational modification of HLA-DQ binding islet autoantigens in type 1 diabetes. *Diabetes*. 2014;63:237–47. doi:10.2337/db12-1214. **This is the first proof of ‘how’ PTM islet epitopes become modified to improve their binding to high-risk HLA-DQ molecules, leading to proinflammatory autoimmunity in T1D patients versus anti-inflammatory responses in healthy subjects.**
6. Mannering SI, Harrison LC, Williamson NA, Morris JS, Thearle DJ, Jensen KP, et al. The insulin A-chain epitope recognized by human T cells is posttranslationally modified. *J Exp Med*. 2005;202(9):1191–7. doi:10.1084/jem.20051251.
7. International Human Genome Sequencing C. Finishing the euchromatic sequence of the human genome. *Nature*. 2004;431(7011):931–45. doi:10.1038/nature03001.
8. Jensen ON. Modification-specific proteomics: characterization of post-translational modifications by mass spectrometry. *Curr Opin Chem Biol*. 2004;8(1):33–41. doi:10.1016/j.cbpa.2003.12.009.
9. de Jong VM, Abreu JR, Verrijn Stuart AA, van der Slik AR, Verhaeghen K, Engelse MA et al. Diabetologia: Alternative splicing and differential expression of the islet autoantigen IGRP between pancreas and thymus contributes to immunogenicity of pancreatic islets but not diabetogenicity in humans; 2013.
10. Dogra RS, Vaidyanathan P, Prabakar KR, Marshall KE, Hutton JC, Pugliese A. Alternative splicing of G6PC2, the gene coding for the islet-specific glucose-6-phosphatase catalytic subunit-related protein (IGRP), results in differential expression in human thymus and spleen compared with pancreas. *Diabetologia*. 2006;49(5):953–7. doi:10.1007/s00125-006-0185-8.
11. Coppieters KT, Dotta F, Amirian N, Campbell PD, Kay TW, Atkinson MA, et al. Demonstration of islet-autoreactive CD8 T cells in insulinitic lesions from recent onset and long-term type 1 diabetes patients. *J Exp Med*. 2012;209(1):51–60. doi:10.1084/jem.20111187.
12. Bottazzo GF. Lawrence lecture. Death of a beta cell: homicide or suicide? *Diabet Med*. 1986;3(2):119–30.
13. Roep BO, Kleijwegt FS, van Halteren AG, Bonato V, Boggi U, Vendrame F, et al. Islet inflammation and CXCL10 in recent-onset type 1 diabetes. *Clin Exp Immunol*. 2010;159(3):338–43. doi:10.1111/j.1365-2249.2009.04087.x.
14. Bruce SE, Bjamason I, Peters TJ. Human jejunal transglutaminase: demonstration of activity, enzyme kinetics and substrate specificity with special relation to gliadin and coeliac disease. *Clin Sci (Lond)*. 1985;68(5):573–9.
15. van Bergen J, Mulder CJ, Mearin ML, Koning F. Local communication among mucosal immune cells in patients with coeliac disease. *Gastroenterology*. 2015;148(6):1187–94. doi:10.1053/j.gastro.2015.01.030.
16. Sileno S, D’Oria V, Stucchi R, Alessio M, Petrini S, Bonetto V, et al. A possible role of transglutaminase 2 in the nucleus of INS-1E and of cells of human pancreatic islets. *J Proteome*. 2014;96:314–27. doi:10.1016/j.jprot.2013.11.011.
17. McLaughlin RJ, de Haan A, Zaldumbide A, de Koning EJ, de Ru AH, van Veelen PA, et al. Human islets and dendritic cells generate post-translationally modified islet auto-antigens. *Clin Exp Immunol*. 2016. **This report demonstrates ‘where’ protein modifications can occur: in target tissue, as well as in the immune system.**
18. Hodrea J, Demeny MA, Majai G, Sarang Z, Korponay-Szabo IR, Fesus L. Transglutaminase 2 is expressed and active on the surface of human monocyte-derived dendritic cells and macrophages. *Immunol Lett*. 2010;130(1–2):74–81. doi:10.1016/j.imlet.2009.12.010.
19. Vomund AN, Zinselmeyer BH, Hughes J, Calderon B, Valderrama C, Ferris ST, et al. Beta cells transfer vesicles containing insulin to phagocytes for presentation to T cells. *Proc Natl Acad Sci U S A*. 2015;112(40):E5496–502. doi:10.1073/pnas.1515954112.
20. Piacentini M, D’Eletto M, Farrace MG, Rodolfo C, Del Nonno F, Ippolito G, et al. Characterization of distinct sub-cellular location of transglutaminase type II: changes in intracellular distribution in physiological and pathological states. *Cell Tissue Res*. 2014;358(3):793–805. doi:10.1007/s00441-014-1990-x.
21. Belkin AM. Extracellular TG2: emerging functions and regulation. *FEBS J*. 2011;278(24):4704–16. doi:10.1111/j.1742-4658.2011.08346.x.
22. Foulquier C, Sebbag M, Clavel C, Chapuy-Regaud S, Al Badine R, Mechin MC, et al. Peptidyl arginine deiminase type 2 (PAD-2) and PAD-4 but not PAD-1, PAD-3, and PAD-6 are expressed in rheumatoid arthritis synovium in close association with tissue inflammation. *Arthritis Rheum*. 2007;56(11):3541–53. doi:10.1002/art.22983.
23. Ireland JM, Unanue ER. Autophagy in antigen-presenting cells results in presentation of citrullinated peptides to CD4 T cells. *J Exp Med*. 2011;208(13):2625–32. doi:10.1084/jem.20110640.
24. Chang KY, Unanue ER. Prediction of HLA-DQ8beta cell peptidome using a computational program and its relationship to autoreactive T cells. *Int Immunol*. 2009;21(6):705–13. doi:10.1093/intimm/dxp039.
25. Nishimura Y, Oiso M, Fujisao S, Kanai T, Kira J, Chen YZ, et al. Peptide-based molecular analyses of HLA class II-associated susceptibility to autoimmune diseases. *Int Rev Immunol*. 1998;17(5–6):229–62.
26. van Lummel M, van Veelen PA, Zaldumbide A, de Ru A, Janssen GM, Moustakas AK, et al. Type 1 diabetes-associated HLA-DQ8 transdimer accommodates a unique peptide repertoire. *J Biol Chem*. 2012;287(12):9514–24. doi:10.1074/jbc.M111.313940.
27. Gottlieb PA, Delong T, Baker RL, Fitzgerald-Miller L, Wagner R, Cook G, et al. Chromogranin A is a T cell antigen in human type 1 diabetes. *J Autoimmun*. 2014;50:38–41. doi:10.1016/j.jaut.2013.10.003.
28. Kooy-Winkelaar Y, van Lummel M, Moustakas AK, Schweizer J, Mearin ML, Mulder CJ, et al. Gluten-specific T cells cross-react between HLA-DQ8 and the HLA-DQ2alpha/DQ8beta transdimer. *J Immunol*. 2011;187(10):5123–9. doi:10.4049/jimmunol.1101179.
29. McGinty JW, Chow IT, Greenbaum C, Odegard J, Kwok WW, James EA. Recognition of posttranslationally modified GAD65 epitopes in subjects with type 1 diabetes. *Diabetes*. 2014;63(9):3033–40. doi:10.2337/db13-1952.
30. Rondas D, Crevecoeur I, D’Hertog W, Ferreira GB, Staes A, Garg AD, et al. Citrullinated glucose-regulated protein 78 is an autoantigen in type 1 diabetes. *Diabetes*. 2015;64(2):573–86. doi:10.2337/db14-0621.
31. Koning F. Recent insight in the pathophysiology of coeliac disease: relevance to rheumatoid arthritis. *Clin Exp Rheumatol*. 2015;33(4 Suppl 92):8–10.
32. Koning F, Thomas R, Rossjohn J, Toes RE. Coeliac disease and rheumatoid arthritis: similar mechanisms, different antigens. *Nat Rev Rheumatol*. 2015;11(8):450–61. doi:10.1038/nrrheum.2015.59.
33. Petersen J, Montserrat V, Mujico JR, Loh KL, Beringer DX, van Lummel M, et al. T-cell receptor recognition of HLA-DQ2-gliadin complexes associated with coeliac disease. *Nat Struct Mol Biol*. 2014;21(5):480–8. doi:10.1038/nsmb.2817.

34. Sollid LM, Jabri B. Celiac disease and transglutaminase 2: a model for posttranslational modification of antigens and HLA association in the pathogenesis of autoimmune disorders. *Curr Opin Immunol*. 2011;23(6):732–8. doi:10.1016/j.coi.2011.08.006.
35. Campbell-Thompson M, Wasserfall C, Montgomery EL, Atkinson MA, Kaddis JS. Pancreas organ weight in individuals with disease-associated autoantibodies at risk for type 1 diabetes. *JAMA*. 2012;308(22):2337–9. doi:10.1001/jama.2012.15008.
36. Dotta F, Censini S, van Halteren AG, Marselli L, Masini M, Dionisi S, et al. Coxsackie B4 virus infection of beta cells and natural killer cell insulinitis in recent-onset type 1 diabetic patients. *Proc Natl Acad Sci U S A*. 2007;104(12):5115–20. doi:10.1073/pnas.0700442104.
37. Marietta EV, Gomez AM, Yeoman C, Tilahun AY, Clark CR, Luckey DH, et al. Low incidence of spontaneous type 1 diabetes in non-obese diabetic mice raised on gluten-free diets is associated with changes in the intestinal microbiome. *PLoS One*. 2013;8(11), e78687. doi:10.1371/journal.pone.0078687.
38. Funda DP, Kaas A, Bock T, Tlaskalova-Hogenova H, Buschard K. Gluten-free diet prevents diabetes in NOD mice. *Diabetes Metab Res Rev*. 1999;15(5):323–7.
39. Funda DP, Kaas A, Tlaskalova-Hogenova H, Buschard K. Gluten-free but also gluten-enriched (gluten+) diet prevent diabetes in NOD mice; the gluten enigma in type 1 diabetes. *Diabetes Metab Res Rev*. 2008;24(1):59–63. doi:10.1002/dmrr.748.
40. Sildorf SM, Fredheim S, Svensson J, Buschard K. Remission without insulin therapy on gluten-free diet in a 6-year old boy with type 1 diabetes mellitus. *BMJ Case Rep*. 2012;2012. doi:10.1136/bcr.2012.5878.
41. Larsen J, Weile C, Antvorskov JC, Engkilde K, Nielsen SM, Josefsen K, et al. Effect of dietary gluten on dendritic cells and innate immune subsets in BALB/c and NOD mice. *PLoS One*. 2015;10(3), e0118618. doi:10.1371/journal.pone.0118618.
42. Davis-Richardson AG, Triplett EW. A model for the role of gut bacteria in the development of autoimmunity for type 1 diabetes. *Diabetologia*. 2015;58(7):1386–93. doi:10.1007/s00125-015-3614-8.
43. Sabbah E, Savola K, Kulmala P, Reijonen H, Veijola R, Vahasalo P, et al. Disease-associated autoantibodies and HLA-DQB1 genotypes in children with newly diagnosed insulin-dependent diabetes mellitus (IDDM). The Childhood Diabetes in Finland Study Group. *Clin Exp Immunol*. 1999;116(1):78–83.
44. Bernard NJ. Rheumatoid arthritis: changes in ACPA Fc glycosylation patterns prior to RA onset. *Nat Rev Rheumatol*. 2013;9(12):697. doi:10.1038/nrrheum.2013.162.
45. Rombouts Y, Willemze A, van Beers JJ, Shi J, Kerkman PF, van Toorn L, et al. Extensive glycosylation of ACPA-IgG variable domains modulates binding to citrullinated antigens in rheumatoid arthritis. *Ann Rheum Dis*. 2015. doi:10.1136/annrheumdis-2014-206598.
46. Trigwell SM, Radford PM, Page SR, Loweth AC, James RF, Morgan NG, et al. Islet glutamic acid decarboxylase modified by reactive oxygen species is recognized by antibodies from patients with type 1 diabetes mellitus. *Clin Exp Immunol*. 2001;126(2):242–9.
47. Strollo R, Rizzo P, Spoletini M, Landy R, Hughes C, Ponchel F, et al. HLA-dependent autoantibodies against post-translationally modified collagen type II in type 1 diabetes mellitus. *Diabetologia*. 2013;56(3):563–72. doi:10.1007/s00125-012-2780-1.
48. Strollo R, Vinci C, Arshad MH, Perrett D, Tiberti C, Chiarelli F, et al. Antibodies to post-translationally modified insulin in type 1 diabetes. *Diabetologia*. 2015;58:2851–60. doi:10.1007/s00125-015-3746-x. **These findings indicate ‘when’ PTM become important in disease pathogenesis by showing that identification of antibodies specific for modified insulin was more sensitive than current standard insulin-autoantibody assay. This may imply that PTM is an important factor in the early stages of the autoimmune response.**
49. Verge CF, Gianani R, Kawasaki E, Yu L, Pietropaolo M, Jackson RA, et al. Prediction of type I diabetes in first-degree relatives using a combination of insulin, GAD, and ICA512bdc/IA-2 autoantibodies. *Diabetes*. 1996;45(7):926–33.
50. Arif S, Leete P, Nguyen V, Marks K, Nor NM, Estorninho M, et al. Blood and islet phenotypes indicate immunological heterogeneity in type 1 diabetes. *Diabetes*. 2014;63(11):3835–45. doi:10.2337/db14-0365.
51. Jin Y, Sharma A, Bai S, Davis C, Liu H, Hopkins D, et al. Risk of type 1 diabetes progression in islet autoantibody-positive children can be further stratified using expression patterns of multiple genes implicated in peripheral blood lymphocyte activation and function. *Diabetes*. 2014;63(7):2506–15. doi:10.2337/db13-1716.
52. Jin Y, She JX. Novel biomarkers in type 1 diabetes. *Rev Diabet Stud*. 2012;9(4):224–35. doi:10.1900/RDS.2012.9.224.
53. Zhi W, Sharma A, Purohit S, Miller E, Bode B, Anderson SW, et al. Discovery and validation of serum protein changes in type 1 diabetes patients using high throughput two dimensional liquid chromatography-mass spectrometry and immunoassays. *Mol Cell Proteomics*. 2011;10:M111–012203. doi:10.1074/mcp.M111.012203.
54. Gibson VB, Nikolic T, Pearce VQ, Demengeot J, Roep BO, Peakman M. Proinsulin multi-peptide immunotherapy induces antigen-specific regulatory T cells and limits autoimmunity in a humanized model. *Clin Exp Immunol*. 2015;182(3):251–60. doi:10.1111/cei.12687.
55. Kleijwegt FS, Jansen DT, Teeler J, Joosten AM, Laban S, Nikolic T, et al. Tolerogenic dendritic cells impede priming of naive CD8(+) T cells and deplete memory CD8(+) T cells. *Eur J Immunol*. 2013;43(1):85–92. doi:10.1002/eji.201242879.
56. Suwandi JS, Toes RE, Nikolic T, Roep BO. Inducing tissue specific tolerance in autoimmune disease with tolerogenic dendritic cells. *Clin Exp Rheumatol*. 2015;33(4 Suppl 92):97–103.
57. Coppieters KT, Roep BO, von Herrath MG. Beta cells under attack: toward a better understanding of type 1 diabetes immunopathology. *Semin Immunopathol*. 2011;33(1):1–7.
58. Eizirik DL, Miani M, Cardozo AK. Signalling danger: endoplasmic reticulum stress and the unfolded protein response in pancreatic islet inflammation. *Diabetologia*. 2013;56(2):234–41.
59. Melief CJ, van der Burg SH. Immunotherapy of established (pre)malignant disease by synthetic long peptide vaccines. *Nat Rev Cancer*. 2008;8(5):351–60. doi:10.1038/nrc2373.
60. Vehik K, Cuthbertson D, Ruhligh H, Schatz DA, Peakman M, Krischer JP, et al. Long-term outcome of individuals treated with oral insulin: diabetes prevention trial-type 1 (DPT-1) oral insulin trial. *Diabetes Care*. 2011;34(7):1585–90. doi:10.2337/dc11-0523.
61. Ringers J, van der Torren CR, van de Linde P, van der Boog PJ, Mallat MJ, Bonifacio E, et al. Pretransplantation GAD-Autoantibody Status to Guide Prophylactic Antibody Induction Therapy in Simultaneous Pancreas and Kidney Transplantation. *Transplantation*. 2013;96(8):745–52. doi:10.1097/TP.0b013e3182a012cc.
62. Bradford CM, Ramos I, Cross AK, Haddock G, McQuaid S, Nicholas AP, et al. Localisation of citrullinated proteins in normal appearing white matter and lesions in the central nervous system in multiple sclerosis. *J Neuroimmunol*. 2014;273(1–2):85–95. doi:10.1016/j.jneuroim.2014.05.007.
63. Gudmann NS, Hansen NU, Jensen AC, Karsdal MA, Siebuhr AS. Biological relevance of citrullinations: diagnostic, prognostic and therapeutic options. *Autoimmunity*. 2015;48(2):73–9. doi:10.3109/08916934.2014.962024.
64. Greer JM, Pender MP. Myelin proteolipid protein: an effective autoantigen and target of autoimmunity in multiple sclerosis. *J Autoimmun*. 2008;31(3):281–7. doi:10.1016/j.jaut.2008.04.018.

65. Weimbs T, Stoffel W. Proteolipid protein (PLP) of CNS myelin: positions of free, disulfide-bonded, and fatty acid thioester-linked cysteine residues and implications for the membrane topology of PLP. *Biochemistry*. 1992;31(49):12289–96.
66. Baldwin AC, Green CD, Olson LK, Moxley MA, Corbett JA. A role for aberrant protein palmitoylation in FFA-induced ER stress and beta-cell death. *Am J Physiol Endocrinol Metab*. 2012;302(11):E1390–8. doi:10.1152/ajpendo.00519.2011.
67. Pfender NA, Grosch S, Roussel G, Koch M, Trifilieff E, Greer JM. Route of uptake of palmitoylated encephalitogenic peptides of myelin proteolipid protein by antigen-presenting cells: importance of the type of bond between lipid chain and peptide and relevance to autoimmunity. *J Immunol*. 2008;180(3):1398–404.
68. Ntranos A, Casaccia P. Bromodomains: translating the words of lysine acetylation into myelin injury and repair. *Neurosci Lett*. 2015. doi:10.1016/j.neulet.2015.10.015.
69. Zamvil SS, Mitchell DJ, Moore AC, Kitamura K, Steinman L, Rothbard JB. T-cell epitope of the autoantigen myelin basic protein that induces encephalomyelitis. *Nature*. 1986;324(6094):258–60. doi:10.1038/324258a0.
70. Battistini L, Piccio L, Rossi B, Bach S, Galgani S, Gasperini C, et al. CD8+ T cells from patients with acute multiple sclerosis display selective increase of adhesiveness in brain venules: a critical role for P-selectin glycoprotein ligand-1. *Blood*. 2003;101(12):4775–82. doi:10.1182/blood-2002-10-3309.
71. Broughton SE, Petersen J, Theodossis A, Scally SW, Loh KL, Thompson A, et al. Biased T cell receptor usage directed against human leukocyte antigen DQ8-restricted gliadin peptides is associated with celiac disease. *Immunity*. 2012;37(4):611–21. doi:10.1016/j.immuni.2012.07.013.
72. Vincentini O, Maialetti F, Gonnelli E, Silano M. Gliadin-dependent cytokine production in a bidimensional cellular model of celiac intestinal mucosa. *Clin Exp Med*. 2015;15(4):447–54. doi:10.1007/s10238-014-0325-2.
73. Clancy KW, Weerapana E, Thompson PR. Detection and identification of protein citrullination in complex biological systems. *Curr Opin Chem Biol*. 2015;30:1–6. doi:10.1016/j.cbpa.2015.10.014.
74. Scally SW, Petersen J, Law SC, Dudek NL, Nel HJ, Loh KL, et al. A molecular basis for the association of the HLA-DRB1 locus, citrullination, and rheumatoid arthritis. *J Exp Med*. 2013;210(12):2569–82. doi:10.1084/jem.20131241.
75. Mastrangelo A, Colasanti T, Barbati C, Pecani A, Sabatinelli D, Pendolino M, et al. The role of posttranslational protein modifications in rheumatological diseases: focus on rheumatoid arthritis. *J Immunol Res*. 2015;2015:712490. doi:10.1155/2015/712490.
76. Pruijn GJ. Citrullination and carbamylation in the pathophysiology of rheumatoid arthritis. *Front Immunol*. 2015;6:192. doi:10.3389/fimmu.2015.00192.
77. Khan MW, Sherwani S, Khan WA, Ali R. Characterization of hydroxyl radical modified GAD65: a potential autoantigen in type 1 diabetes. *Autoimmunity*. 2009;42(2):150–8. doi:10.1080/08916930802468276.
78. Mirarabshahi P, Abdelatti M, Krilis S. Post-translational oxidative modification of beta2-glycoprotein I and its role in the pathophysiology of the antiphospholipid syndrome. *Autoimmun Rev*. 2012;11(11):779–80. doi:10.1016/j.autrev.2011.12.007.
79. Passam FH, Giannakopoulos B, Mirarabshahi P, Krilis SA. Molecular pathophysiology of the antiphospholipid syndrome: the role of oxidative post-translational modification of beta 2 glycoprotein I. *J Thromb Haemost*. 2011;9 Suppl 1:275–82. doi:10.1111/j.1538-7836.2011.04301.x.
80. Kondo A, Miyamoto T, Yonekawa O, Giessing AM, Osterlund EC, Jensen ON. Glycopeptide profiling of beta-2-glycoprotein I by mass spectrometry reveals attenuated sialylation in patients with antiphospholipid syndrome. *J Proteomics*. 2009;73(1):123–33. doi:10.1016/j.jprot.2009.08.007.
81. Neugebauer KM, Merrill JT, Wener MH, Lahita RG, Roth MB. SR proteins are autoantigens in patients with systemic lupus erythematosus. Importance of phosphoepitopes. *Arthritis Rheum*. 2000;43(8):1768–78. doi:10.1002/1529-0131(200008)43:8<1768::AID-ANR13>3.0.CO;2-9.
82. Dwivedi N, Neeli I, Schall N, Wan H, Desiderio DM, Csernok E, et al. Deimination of linker histones links neutrophil extracellular trap release with autoantibodies in systemic autoimmunity. *FASEB J*. 2014;28(7):2840–51. doi:10.1096/fj.13-247254.
83. Doyle HA, Yang ML, Raycroft MT, Gee RJ, Mamula MJ. Autoantigens: novel forms and presentation to the immune system. *Autoimmunity*. 2014;47(4):220–33. doi:10.3109/08916934.2013.850495.