



Department
for Education

**Statistical
First Release**



NEET Statistics - Quarterly Brief – July to September 2013

Introduction

This note sets out the available statistics on young people not in education, employment or training (NEET) and young people not in education or training (NET) from three data sources:

i) Participation Statistical First Release (SFR)

These are the authoritative national estimates of NEET and NET rates. They are published annually in the 'Participation in Education, Training and Employment by 16-18 Year Olds in England' SFR. These data are only available annually and cannot be disaggregated to sub-national levels. These take account of revised 2011 Census data, published by the Office for National Statistics (ONS).

ii) Quarterly Labour Force Survey (LFS)¹

Analysis of the LFS allows in-year estimates to be made of NEET and NET trends as well as estimates for other age groups, including 16-24, 18-24 and 19-24. The quarterly LFS estimates cannot be directly compared with the headline Participation SFR series which is based on more detailed but less timely data. This LFS data has not yet been reweighted to reflect ONS's revised population estimates based on the 2011 Census. The ONS are due to complete this work in 2014.

The most recent LFS based estimates for NEET, for the period July to September 2013, are shown in the following table along with 2011 and 2012 data.

Table: NEET rates for different age cohorts: England 2011 – 2013

	July-September 2011	July-September 2012	July-September 2013	% point change from July-September 2012 to July-September 2013*
Age 16	7.7%	4.2%	5.4%	+1.2ppts
Age 17	15.5%	12.8%	14.4%	+1.5ppts
Age 18	18.4%	14.9%	16.2%	+1.3ppts
Age 16-18	13.9%	10.7%	12.2%	+1.4ppts
Age 19-24	22.0%	20.1%	20.1%	+0.1ppts
Age 16-24	19.5%	17.2%	17.7%	+0.5ppts

Source: Labour Force Survey, July to September

*None of the changes are statistically significant

iii) Local Authorities' Client Caseload Information System (CCIS).

CCIS is the database that local authorities use to record the activity of young people aged 16-19 resident in their area. Data can be aggregated to provide estimates for local authorities and regions within England.

The data from all three sources cover England.

Section 1- Trends. Focuses on the key trends in the NEET and NET data series for 16-18 year olds.

Section 2- Methodology and Notes. Explains the methodology used to derive the different series, and gives guidance on their usage.

Section 3- Tables. Contains four tables showing numbers and percentages for the key data series on NET and NEET.

10th December 2013

Coverage: England

Theme: Children,
Education and skills

SFR 48/2013

Issued by

Department for Education
Sanctuary Buildings
Great Smith Street
London SW1P 3BT

Telephone:

Press Office

020 7925 6789

Public Enquiries

0870 000 2288

Statistician

Emily Uttley

0114 2742442

Contact Us

Post16.STATISTICS@education.gsi.gov.uk

Internet

<http://tinyurl.com/Q3-2013-NEET-Statistics>

¹ The methodology used to produce these data was revised in May 2013 to ensure harmonisation with the new ONS UK NEET estimates. Further information about this change and the impact on previously released data can be found in the [Harmonised NEET Methodology paper](#).

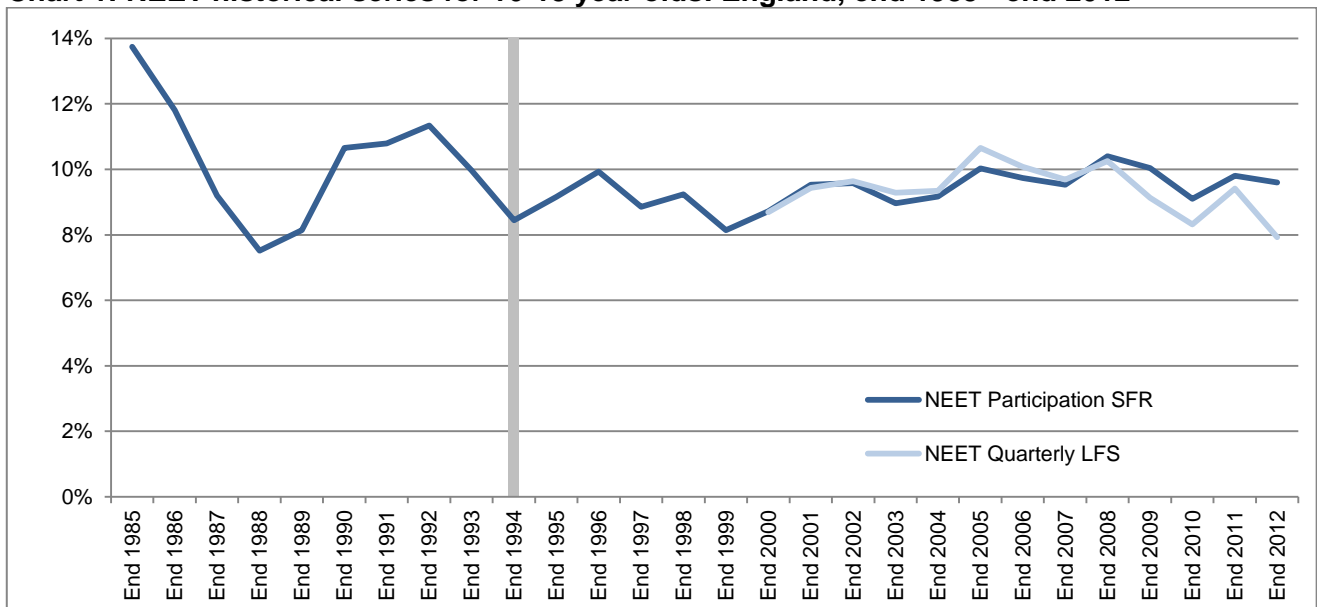
1. Trends

Historical Context

Understanding the historical trends in NEET rates is an important part of placing current performance in perspective. The chart below shows the NEET Participation SFR measure from 1985 along with the LFS NEET measure back to 2000 (the furthest back the LFS methodology can be applied consistently).

Since the fall in the proportion of NEET in the mid-1990s, the 16-18 NEET rate has tended to fluctuate at around 9-10%.

Chart 1: NEET historical series for 16-18 year olds: England, end 1985 - end 2012



Source: Statistical First Release (SFR) 'Participation in Education, Training and Employment by 16-18 Year Olds in England' and analysis of Labour Force Survey (LFS), Oct-Dec Quarter.

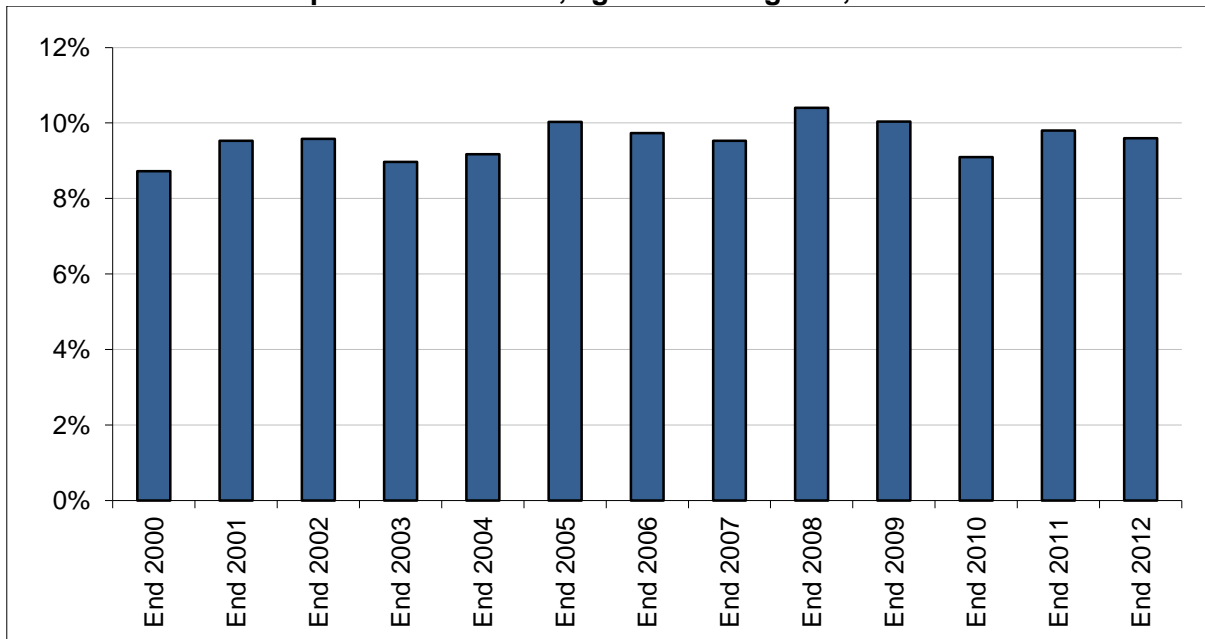
Note: There is a break in the SFR time-series in 1994 due to changes in the source of further and higher education data. The pre-1994 data sources produced slightly higher NEET estimates for 16-18 year olds than later sources.

a. NEET Participation SFR series (last updated August 2013)

The Department's Statistical First Release (SFR) '[Participation in Education, Training and Employment by 16-18 Year Olds in England](#)' is the primary source of national data on 16-18 year olds NEET.

The latest Participation SFR NEET rate for 16-18 year olds, at end 2012, was 9.6%, a fall of 0.2 percentage points from 9.8% at end 2011. This fall was due to a rising NET employment rate; however its impact on the NEET rate was limited due to the first drop in participation in education and training since 2001. The employment rate of 16-18 year olds NET rose from 41.1% at end 2011, to 44.1% at end 2012. Over the same period, participation in education and training decreased from 83.3% to 82.8%.

Chart 2: NEET Participation SFR series, age 16-18: England, end 2000 – end 2012



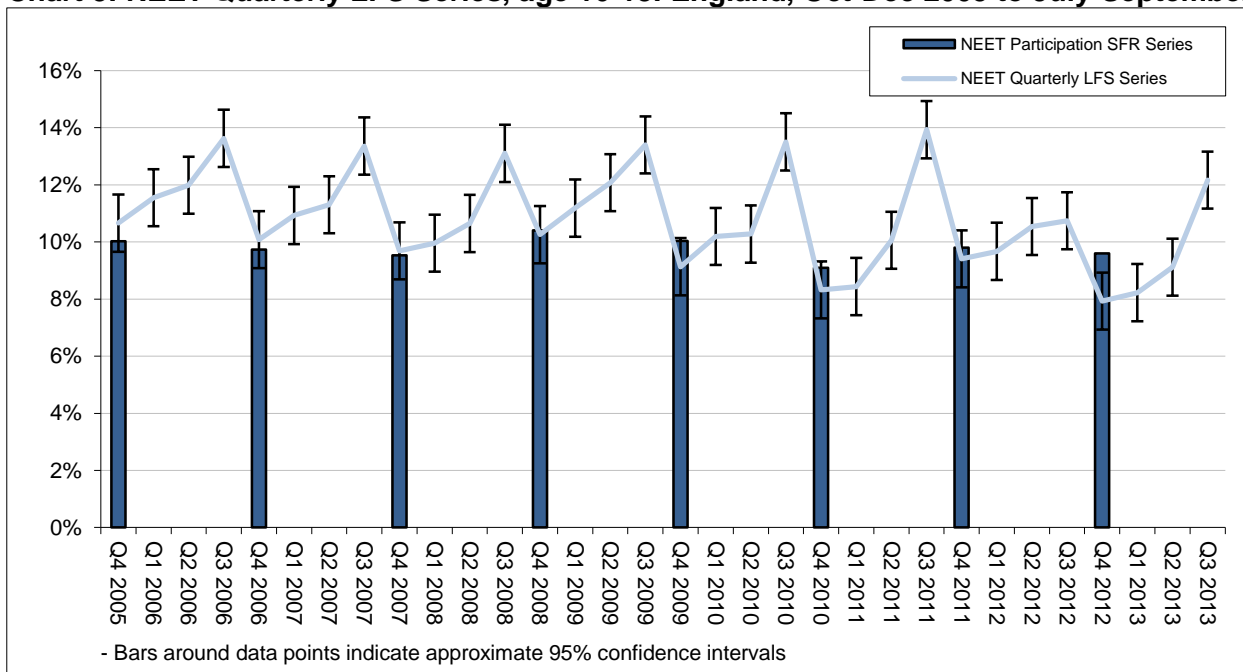
Source: Statistical First Release (SFR) 'Participation in Education, Training and Employment by 16-18 Year Olds in England'

b. NEET quarterly LFS series (last updated December 2013)

We can monitor trends in NEET rates between the publications of the Participation SFR series using quarterly LFS data.

The trend data for 16-18 year olds shows seasonal patterns that reflect the academic year: lower rates in autumn (October to December) followed by a gradual rise in spring and early summer (January to June) with a peak in late summer (July to September).

Chart 3: NEET Quarterly LFS Series, age 16-18: England, Oct-Dec 2005 to July-September 2013



Source: Quarterly Labour Force Survey and Participation SFR.

Note: Q1 relates to the months January - March, Q2 relates to April - June, Q3 relates to July - September and Q4 relates to October - December.

The latest data show that the proportion of 16-18 year olds NEET increased by 1.4 percentage points to 12.2% in July-September 2013, compared to July-September 2012. This increase was not statistically significant.

However, the July-September NEET rate for 16-18 year olds was unexpectedly low in 2012 compared to the previous trend. This was driven predominantly by a dramatic increase in the employment rate in the NET group, which rose from 40.2% in 2011 to 49.9% in 2012, contrary to the trend of falling employment rates over the previous decade. This meant that the large seasonal spike in the NEET rate normally observed between the April-June and July-September quarters failed to emerge in 2012 (it increased by 0.2 percentage points compared to an average of 3.5 percentage points over the previous two years). It returned in 2013 with the July-September quarter being 3.0 percentage points higher than the April-June quarter.

The increase in NEET between July-September 2012 and 2013 was driven predominantly by a fall in the employment rate of the NET group to 44.3%, more in keeping with the previous trend.

It has not been possible to determine whether the unexpectedly low NEET figure in July-September 2012 was a real phenomenon, driven for example by increased youth employment during the Olympics, or was a sampling effect in the Labour Force Survey - or a combination of both.

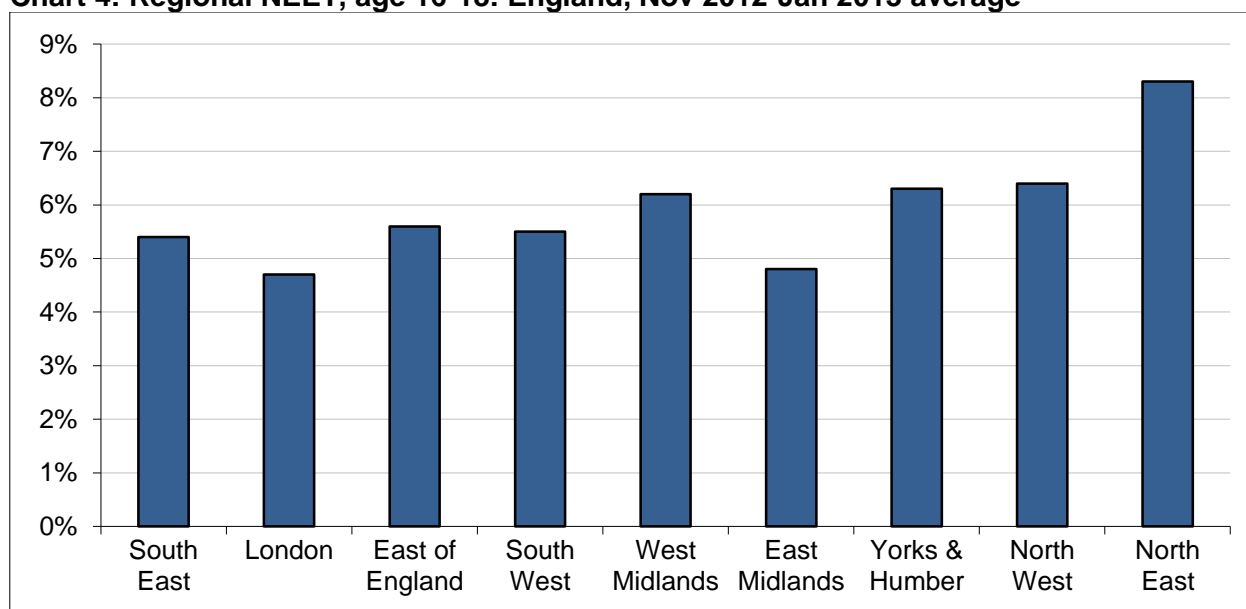
c. Regional NEET (last updated August 2013)

The regional picture on 16-18 NEET is taken from Local Authorities' Client Caseload Information System (CCIS).

CCIS data indicates that the northern English regions have higher NEET rates, i.e. North East, North West and Yorkshire and Humberside. In comparison, London and East Midlands have the lowest NEET rates.

Note that CCIS data tend to show a lower percentage NEET than either the Participation SFR or LFS data sources.

Chart 4: Regional NEET, age 16-18: England, Nov 2012-Jan 2013 average



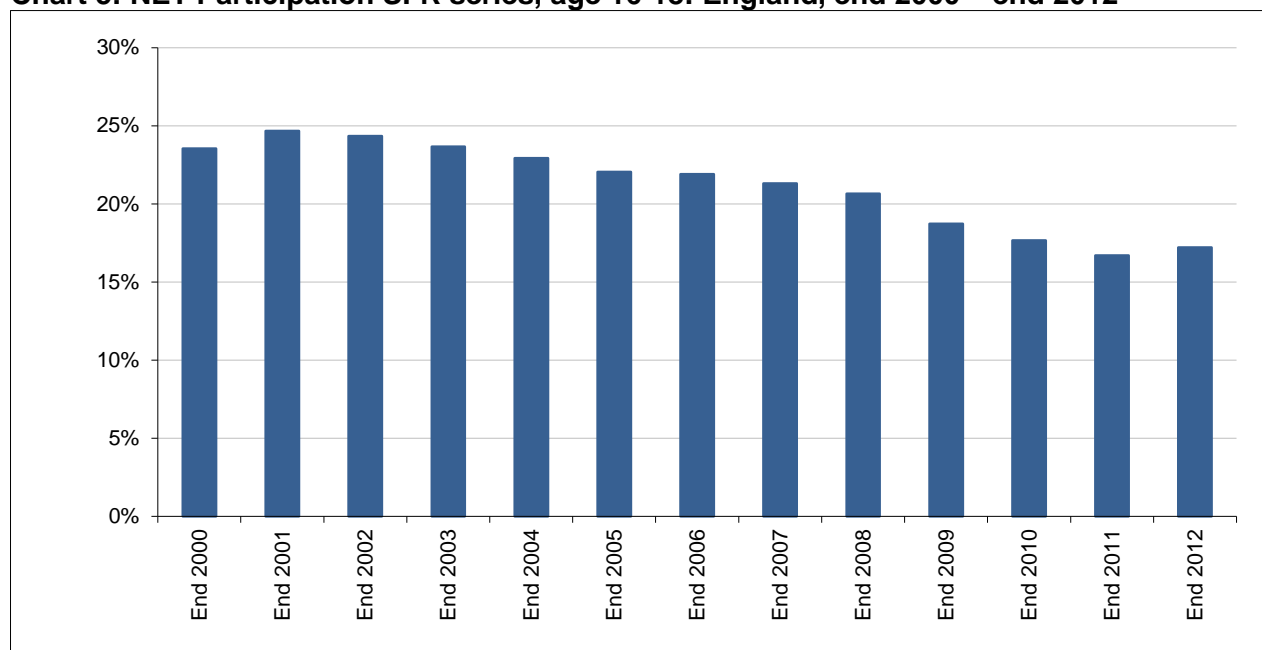
Source: Client Caseload Information System

Note: Local Authority CCIS data are published annually. In addition, regional NEET estimates for 16-24 year olds based on the LFS are now published as supplementary tables alongside this Quarterly Brief. [Both publications](#) appear on the DfE website.

d. NET Participation SFR series (last updated August 2013)

When examining NEET data, it is also important to contextualise it with data on the proportion of young people not in education or training (NET). These data are also taken from the SFR 'Participation in Education, Training and Employment by 16-18 Year Olds in England'.

Chart 5: NET Participation SFR series, age 16-18: England, end 2000 – end 2012



Source: Statistical First Release (SFR) 'Participation in Education, Training and Employment by 16-18 Year Olds in England'

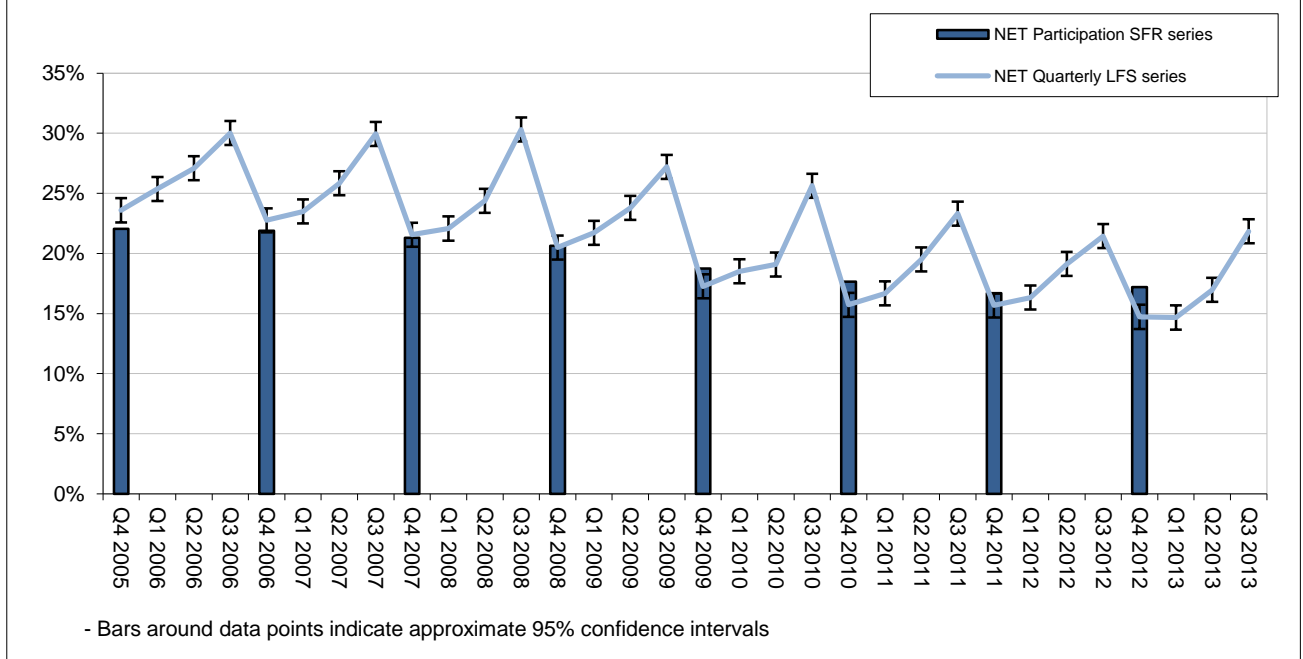
The latest Participation SFR NET rate, for end 2012, was 17.2%, a rise of 0.5 percentage points from end 2011. This was the first rise since end 2001 when 24.7% of 16-18 year olds were NET.

e. NET quarterly LFS series (last updated December 2013)

As with the NEET data, we can look at the in-year NET trend data using the quarterly LFS. The NET series shows the same seasonal pattern as the NEET series.

The proportion of 16-18 year olds NET rose by 0.4 percentage points to 21.8% in July-September 2013, compared to 21.4% in July-September 2012. Overall, the July-September NET figures declined gradually from 2003 to 2008 then more steeply between 2008 and 2012. The rise between 2012 and 2013 is not statistically significant.

Chart 6: NET Quarterly LFS series, age 16-18: England, Oct-Dec 2005 to July-September 2013



Source: Quarterly Labour Force Survey and Participation SFR.

Note: Q1 relates to the months January - March, Q2 relates to April - June, Q3 relates to July - September and Q4 relates to October - December.

2. Methodology and Notes

a. NEET and NET Participation SFR series

Description	These data give the definitive measures for 16-18 NEET and NET rates in England.
Uses	These series should be used as the national time series for 16-18 year olds NEET and NET in England. The NET series should be used as context for any NEET data.
Geographical Coverage	England
Age coverage	Academic age 16 to 18
Published source	Statistical First Release (SFR) 'Participation in Education, Training and Employment by 16-18 Year Olds in England'
Primary sources	The Schools' Census Pupil Level Annual Schools' Census The Individualised Learner Record (ILR) Higher Education Statistics Agency (HESA). Higher Education Students Early Statistics (HESES) Labour Force Survey Mid-year estimates and projections of population from the Office for National Statistics (ONS)
Last period covered	End 2012
Last published	June 2013. Includes revised population estimates based on Census 2011.
Next published	June 2014

b. NEET and NET quarterly LFS series

Description	These series are quarterly estimates of NEET and NET amongst young people from the LFS. They are not directly comparable with the Participation SFR measure. However, these statistics are produced using the same methodology as the ONS UK NEET estimate. Full details are published in the technical specification .
Uses	These series provide more timely data on the recent trends in NEET and NET since the last Participation SFR. Trends should be assessed by comparing the current time period with the same time period in the previous year, to account for seasonal effects. For example, October-December figures should not be compared with January-March figures. The NET series should be used as context for any NEET data.
Geographical coverage	England
Age coverage	Academic age 16 to 24
Published source	Quarterly Labour Force Survey
Primary sources	Quarterly Labour Force Survey
Last Period Covered	July-September 2013
Last published	December 2013. Does not include revised population estimates based on Census 2011.
Next published	February 2014

c. Regional NEET

Description	<p>This series is a 3 month average snapshot estimate of the regional NEET rate taken from the Local Authority Client Caseload Information System (CCIS) data. It is neither directly comparable with the LFS nor the Participation SFR series due to the use of 'currency' rules. The activity status of young people in education or employment is not actively checked every month, but has a shelf life depending on the type of educational course or the nature of the employment.</p> <p>For young people whose currency is lapsed a historical assumption is made on the proportion NEET, taking into account their previously reported activity.</p> <p>The combination of both factors leads to estimates of NEET in the CCIS data that tend to be lower than those estimated from the LFS or those reported in the annual Participation Statistical First Release (SFR).</p>
Uses	This series shows the data, aggregated in regions, used by Local Authorities to inform local activity and target setting.
Geographical Coverage	England
Age coverage	Academic age 16 to 18
Published source	Management information published on the DfE website as policy data: 16- to 18-year-olds NEET
Primary sources	Client Caseload Information System (CCIS)
Last Period Covered	November 2012 – January 2013 average.
Last published	May 2013
Next published	April 2014

d. Scheduled revisions to previously published statistics

Labour Force Survey (LFS) datasets are routinely reweighted in line with population estimates. The most recent update introduced a new weighting variable, PWT11, to LFS datasets from July - September 2009 onwards.

The PWT11 weights do not reflect the most recent population estimates for England and Wales, announced by the Office for National Statistics (ONS) on 16th July 2012. ONS plan to release LFS data (from 2001 onwards) reweighted in line with the 2011 Census, in 2014.

ONS have produced a comparison of the 2011 Census and the LFS labour market indicators which can be found at the following link: <http://www.ons.gov.uk/ons/rel/census/2011-census/key-statistics-for-local-authorities-in-england-and-wales/rpt-labour.html>

In contrast, this Statistical First Release reproduces statistics from the DfE '[Participation in Education, Training and Employment by 16-18 Year Olds in England](#)' SFR which rely on mid-year population estimates which have been revised based on the 2011 Census.

e. National Statistics Publication

The United Kingdom Statistics Authority has designated these statistics as National Statistics, in accordance with the Statistics and Registration Service Act 2007 and signifying compliance with the Code of Practice for Official Statistics.

Designation can be broadly interpreted to mean that the statistics:

- meet identified user needs;
- are well explained and readily accessible;
- are produced according to sound methods, and
- are managed impartially and objectively in the public interest.

Once statistics have been designated as National Statistics it is a statutory requirement that the Code of Practice shall continue to be observed.

e. Equivalent statistics from the Welsh Assembly Government, Scottish Government and the Office for National Statistics (ONS)

	Welsh Assembly Government (WG)	Scottish Government (SG)	Office for National Statistics (ONS)
Description	1. Annual SFR statistics produced in a method analogous to the DfE annual SFR.	1. Statistics based on the Annual Population Survey (APS).	1. Monthly Labour Force Survey (LFS) statistics for young people not in full-time education and not in employment -Table 14 from the Labour Market Statistics bulletin.
	2. Quarterly Statistics based on the Annual Population Survey (APS). Definition of NEET corresponds to that used in the DfE NEET Quarterly Brief	2. Annual school leaver statistics	2. Quarterly Statistics based on the Labour Force Survey (LFS). Definition of NEET corresponds to that used in the DfE NEET Quarterly Brief.
	3. Pupil destinations based on Careers Wales Survey.	3. Combination of DWP benefits data and school leaver destinations	
Uses	1. Regarded as the definitive measure of headline NEET estimates in Wales.	1. National estimates of NEET.	1. Part of wider labour market statistics; rolling 3-month average both seasonally-adjusted and not seasonally-adjusted; roughly equivalent to NEET but will include some young people in part-time education.
	2. Timely data; regional or single-age estimates based on averaging 3 years of data.	2. Proportion of young people in 'positive destinations'. The complement is roughly equivalent to NEET, but will include some young people in part-time education.	2. UK estimate, seasonally adjusted.
	3. Local area estimates of NEET.	3. Local area estimates of NEET.	
Geographical Coverage	Wales	Scotland	United Kingdom (UK)
Age coverage	Academic age 16-18, 19-24 (SFR); academic age 16-18, 19-24 (APS); interviews in October following Year 11 (Careers Wales)	Actual age 16-19.	Actual age 16-17 and 18-24.
Published source	1. Welsh Government Participation of Young People in Education and the Labour Market, 2011 and 2012 (provisional)	1. Local Area Labour Markets in Scotland: Statistics from the Annual Population Survey 2012	1. Labour Market Statistics - November 2013
	2. Young People Not in Education, Employment or Training (NEET), Year to 30 June 2013	2. Summary statistics for attainment, leaver destinations and healthy living, No. 3: 2013 Edition	2. ONS UK NEET, November 2013
	3. Pupil Destinations from Schools in Wales, 2012	3. More Choices More Chances	

3. Tables

Table 1: Not in Employment, Education, or Training (NEET): England

		<i>Numbers</i>						
a. NEET Participation SFR series	16 year olds	17 year olds	18 year olds	16-17 year olds	16-18 year olds	16-24 year olds	18-24 year olds	19-24 year olds
End 2000	40,700	44,200	71,300	84,800	156,100			
End 2001	46,700	55,500	73,600	102,100	175,800			
End 2002	47,300	57,300	75,600	104,600	180,200			
End 2003	44,600	47,200	79,700	91,800	171,500			
End 2004	45,400	53,500	78,700	98,800	177,600			
End 2005	48,100	62,700	85,500	110,800	196,300			
End 2006	44,700	58,200	90,400	103,000	193,300			
End 2007	41,100	58,900	91,400	100,000	191,500			
End 2008	38,800	62,300	110,500	101,100	211,600			
End 2009	36,000	52,500	114,800	88,500	203,200			
End 2010	33,600	54,100	95,000	87,700	182,800			
End 2011	35,500	56,800	103,200	92,300	195,500			
End 2012	37,900	47,900	104,300	85,800	190,100			
<i>Source: Labour Force Survey and Admin Data</i>		<i>Period: End 2000 to End 2012</i>						
b. NEET Quarterly LFS series*	16 year olds	17 year olds	18 year olds	16-17 year olds	16-18 year olds	16-24 year olds	18-24 year olds	19-24 year olds
Q3 2008	50,000	104,000	103,000	154,000	257,000	986,000	832,000	729,000
Q4 2008	41,000	55,000	107,000	95,000	202,000	850,000	755,000	648,000
Q1 2009	43,000	66,000	110,000	109,000	219,000	924,000	815,000	705,000
Q2 2009	53,000	76,000	108,000	129,000	237,000	950,000	821,000	713,000
Q3 2009	53,000	96,000	113,000	148,000	261,000	1,064,000	916,000	803,000
Q4 2009	28,000	49,000	98,000	77,000	175,000	888,000	810,000	713,000
Q1 2010	32,000	58,000	106,000	90,000	196,000	921,000	831,000	725,000
Q2 2010	32,000	67,000	100,000	99,000	199,000	868,000	769,000	669,000
Q3 2010	38,000	100,000	121,000	138,000	260,000	1,023,000	885,000	763,000
Q4 2010	27,000	41,000	90,000	68,000	158,000	934,000	866,000	776,000
Q1 2011	34,000	49,000	79,000	83,000	161,000	927,000	844,000	766,000
Q2 2011	42,000	56,000	92,000	98,000	190,000	991,000	893,000	801,000
Q3 2011	49,000	98,000	119,000	147,000	266,000	1,181,000	1,034,000	915,000
Q4 2011	31,000	50,000	93,000	81,000	174,000	969,000	887,000	794,000
Q1 2012	38,000	57,000	85,000	95,000	180,000	960,000	865,000	780,000
Q2 2012	36,000	59,000	100,000	95,000	195,000	986,000	891,000	791,000
Q3 2012	25,000	80,000	92,000	105,000	197,000	1,038,000	933,000	842,000
Q4 2012	21,000	32,000	93,000	53,000	146,000	890,000	837,000	744,000
Q1 2013	26,000	40,000	86,000	65,000	152,000	909,000	843,000	757,000
Q2 2013	30,000	53,000	85,000	83,000	168,000	935,000	852,000	767,000
Q3 2013	31,000	89,000	101,000	120,000	221,000	1,066,000	946,000	845,000
<i>Source: Labour Force Survey</i>		<i>Period: Q3 2008 to Q3 2013 time series</i>						
<i>Note: Q1 relates to the months January-March, Q2 to April –June, Q3 to July-September and Q4 to October-December</i>								
<i>*Note: the Labour Force Survey has not been reweighted to reflect the Census 2011 population so the numbers should be used with caution</i>								
c. Regional NEET	16 year olds	17 year olds	18 year olds	16-17 year olds	16-18 year olds	16-24 year olds	18-24 year olds	19-24 year olds
South East								
London								
East of England								
South West								
West Midlands								
East Midlands								
Yorks & Humber								
North West								
North East								
<i>CCIS data is collected by local authorities and covers only those young people known to them. As a result, the number of young people known to local authorities to be NEET is considerably lower than that estimated by other sources and is excluded from this publication to avoid confusion.</i>								

Table 2: Not in Education and Training (NET): England

		<i>Numbers</i>							
d. NET Participation SFR series		16 year olds	17 year olds	18 year olds	16-17 year olds	16-18 year olds	16-24 year olds	18-24 year olds	19-24 year olds
End 2000		82,700	116,300	222,400	198,900	421,300			
End 2001		88,300	131,500	235,200	219,800	455,100			
End 2002		80,100	135,200	242,300	215,300	457,600			
End 2003		75,700	125,700	251,200	201,500	452,700			
End 2004		74,500	124,200	245,500	198,700	444,100			
End 2005		68,300	122,300	241,000	190,500	431,500			
End 2006		67,100	117,400	250,200	184,600	434,800			
End 2007		66,700	116,000	245,600	182,700	428,300			
End 2008		52,800	114,000	253,000	166,800	419,800			
End 2009		44,800	87,400	247,200	132,200	379,400			
End 2010		42,900	81,600	230,300	124,500	354,700			
End 2011		42,500	81,700	207,500	124,200	331,700			
End 2012		44,700	74,600	220,600	119,400	340,000			
<i>Source: Labour Force Survey and Admin Data</i>		<i>Period: End 2000 to End 2012</i>							
e. NET Quarterly LFS series*		16 year olds	17 year olds	18 year olds	16-17 year olds	16-18 year olds	16-24 year olds	18-24 year olds	19-24 year olds
Q3 2008		84,000	220,000	292,000	304,000	595,000	3,237,000	2,933,000	2,642,000
Q4 2008		55,000	101,000	248,000	156,000	404,000	2,794,000	2,638,000	2,390,000
Q1 2009		60,000	120,000	245,000	180,000	425,000	2,810,000	2,630,000	2,385,000
Q2 2009		73,000	137,000	257,000	210,000	467,000	2,871,000	2,661,000	2,404,000
Q3 2009		75,000	176,000	280,000	251,000	530,000	3,100,000	2,849,000	2,569,000
Q4 2009		36,000	82,000	212,000	118,000	330,000	2,710,000	2,592,000	2,379,000
Q1 2010		40,000	98,000	219,000	138,000	356,000	2,729,000	2,591,000	2,373,000
Q2 2010		42,000	108,000	219,000	150,000	370,000	2,744,000	2,594,000	2,375,000
Q3 2010		53,000	180,000	260,000	233,000	493,000	3,107,000	2,874,000	2,614,000
Q4 2010		35,000	62,000	202,000	97,000	299,000	2,769,000	2,672,000	2,471,000
Q1 2011		43,000	73,000	202,000	117,000	319,000	2,772,000	2,656,000	2,454,000
Q2 2011		54,000	99,000	216,000	152,000	368,000	2,976,000	2,824,000	2,608,000
Q3 2011		67,000	151,000	227,000	218,000	445,000	3,162,000	2,944,000	2,717,000
Q4 2011		39,000	73,000	178,000	112,000	290,000	2,736,000	2,624,000	2,446,000
Q1 2012		45,000	79,000	180,000	124,000	304,000	2,728,000	2,604,000	2,423,000
Q2 2012		51,000	95,000	209,000	146,000	355,000	2,919,000	2,773,000	2,564,000
Q3 2012		46,000	128,000	218,000	174,000	393,000	3,067,000	2,892,000	2,674,000
Q4 2012		28,000	53,000	189,000	82,000	270,000	2,733,000	2,651,000	2,462,000
Q1 2013		29,000	58,000	184,000	86,000	271,000	2,688,000	2,602,000	2,417,000
Q2 2013		35,000	85,000	193,000	119,000	312,000	2,812,000	2,692,000	2,500,000
Q3 2013		41,000	144,000	212,000	185,000	397,000	3,080,000	2,895,000	2,683,000
<i>Source: Labour Force Survey</i>		<i>Period: Q3 2008 to Q3 2013 time series</i>							
Note: Q1 relates to the months January-March, Q2 to April –June, Q3 to July-September and Q4 to October-December									
*Note: the Labour Force Survey has not been reweighted to reflect the Census 2011 population so the numbers should be used with caution									

Table 3: Not in Employment, Education, or Training (NEET): England

<i>Percentage</i>								
a. NEET Participation SFR series	16 year olds	17 year olds	18 year olds	16-17 year olds	16-18 year olds	16-24 year olds	18-24 year olds	19-24 year olds
End 2000	6.7%	7.4%	12.2%	7.0%	8.7%			
End 2001	7.4%	9.1%	12.2%	8.2%	9.5%			
End 2002	7.6%	9.0%	12.2%	8.3%	9.6%			
End 2003	7.0%	7.5%	12.4%	7.2%	9.0%			
End 2004	6.9%	8.3%	12.3%	7.6%	9.2%			
End 2005	7.4%	9.5%	13.2%	8.5%	10.0%			
End 2006	6.7%	8.9%	13.5%	7.8%	9.7%			
End 2007	6.1%	8.8%	13.8%	7.4%	9.5%			
End 2008	5.8%	9.1%	16.2%	7.5%	10.4%			
End 2009	5.5%	7.8%	16.5%	6.7%	10.0%			
End 2010	5.1%	8.2%	13.8%	6.6%	9.1%			
End 2011	5.5%	8.5%	15.3%	7.0%	9.8%			
End 2012	5.8%	7.3%	15.5%	6.6%	9.6%			
<i>Source: Labour Force Survey and Admin Data</i> <i>Period: End 2000 to End 2012</i>								
b. NEET Quarterly LFS series*	16 year olds	17 year olds	18 year olds	16-17 year olds	16-18 year olds	16-24 year olds	18-24 year olds	19-24 year olds
Q3 2008	8.0%	15.5%	15.6%	11.9%	13.1%	16.4%	17.7%	18.0%
Q4 2008	6.3%	8.3%	15.9%	7.3%	10.3%	14.2%	16.0%	16.1%
Q1 2009	6.6%	10.0%	16.8%	8.4%	11.2%	15.5%	17.4%	17.5%
Q2 2009	8.3%	11.5%	16.3%	9.9%	12.1%	15.8%	17.5%	17.7%
Q3 2009	8.2%	15.0%	16.8%	11.6%	13.4%	17.8%	19.5%	20.0%
Q4 2009	4.6%	7.4%	15.4%	6.0%	9.1%	14.8%	17.2%	17.4%
Q1 2010	5.1%	8.6%	16.9%	7.0%	10.2%	15.3%	17.6%	17.7%
Q2 2010	5.2%	10.1%	15.2%	7.7%	10.3%	14.4%	16.2%	16.4%
Q3 2010	6.2%	15.0%	19.1%	10.8%	13.5%	17.1%	18.8%	18.8%
Q4 2010	4.2%	6.6%	14.0%	5.4%	8.3%	15.5%	18.2%	18.9%
Q1 2011	5.2%	7.9%	12.2%	6.5%	8.4%	15.4%	17.7%	18.6%
Q2 2011	6.6%	9.1%	14.5%	7.8%	10.1%	16.4%	18.6%	19.3%
Q3 2011	7.7%	15.5%	18.4%	11.6%	13.9%	19.5%	21.5%	22.0%
Q4 2011	5.1%	8.1%	14.9%	6.6%	9.4%	16.1%	18.5%	19.1%
Q1 2012	6.2%	9.0%	13.7%	7.6%	9.7%	15.9%	18.1%	18.8%
Q2 2012	5.9%	9.7%	15.9%	7.8%	10.5%	16.3%	18.4%	18.8%
Q3 2012	4.2%	12.8%	14.9%	8.6%	10.7%	17.2%	19.4%	20.1%
Q4 2012	3.6%	5.2%	14.5%	4.4%	7.9%	14.9%	17.6%	18.0%
Q1 2013	4.6%	6.0%	13.8%	5.4%	8.2%	15.1%	17.6%	18.2%
Q2 2013	5.0%	8.0%	14.4%	6.6%	9.1%	15.5%	17.8%	18.3%
Q3 2013	5.4%	14.4%	16.2%	10.1%	12.2%	17.7%	19.6%	20.1%
<i>Source: Labour Force Survey</i> <i>Period: Q3 2008 to Q3 2013 time series</i>								
<i>Note: Q1 relates to the months January-March, Q2 to April –June, Q3 to July-September and Q4 to October-December</i>								
<i>*Note: the Labour Force Survey has not been reweighted to reflect the Census 2011 population</i>								
c. Regional NEET	16 year olds	17 year olds	18 year olds	16-17 year olds	16-18 year olds	16-24 year olds	18-24 year olds	19-24 year olds
South East	3.1%	5.2%	8.1%	4.2%	5.4%			
London	2.3%	3.6%	8.3%	3.0%	4.7%			
East of England	3.3%	5.3%	8.3%	4.3%	5.6%			
South West	3.0%	5.3%	8.2%	4.2%	5.5%			
West Midlands	3.7%	6.1%	8.9%	4.9%	6.2%			
East Midlands	3.0%	4.9%	6.7%	4.0%	4.8%			
Yorks & Humber	3.7%	6.3%	8.8%	5.1%	6.3%			
North West	3.7%	6.2%	9.3%	4.9%	6.4%			
North East	4.1%	7.5%	13.7%	5.8%	8.3%			
<i>Source: Client Caseload Information System</i> <i>Period: Nov 2012 - Jan 2013 average</i>								

Table 4: Not in Education and Training (NET): England

<i>Percentage</i>								
d. NET Participation SFR series	16 year olds	17 year olds	18 year olds	16-17 year olds	16-18 year olds	16-24 year olds	18-24 year olds	19-24 year olds
End 2000	13.6%	19.4%	38.0%	16.5%	23.5%			
End 2001	14.0%	21.5%	39.1%	17.7%	24.7%			
End 2002	12.8%	21.3%	39.2%	17.1%	24.3%			
End 2003	11.9%	19.9%	39.0%	15.9%	23.7%			
End 2004	11.4%	19.4%	38.4%	15.3%	22.9%			
End 2005	10.5%	18.5%	37.1%	14.6%	22.0%			
End 2006	10.1%	17.9%	37.4%	14.0%	21.9%			
End 2007	9.9%	17.3%	37.0%	13.6%	21.3%			
End 2008	7.9%	16.7%	37.2%	12.3%	20.6%			
End 2009	6.8%	12.9%	35.6%	9.9%	18.7%			
End 2010	6.5%	12.3%	33.5%	9.4%	17.7%			
End 2011	6.6%	12.3%	30.9%	9.5%	16.7%			
End 2012	6.9%	11.4%	32.7%	9.2%	17.2%			
<i>Source: Labour Force Survey and Admin Data</i>			<i>Period: End 2000 to End 2012</i>					
e. NET Quarterly LFS series*	16 year olds	17 year olds	18 year olds	16-17 year olds	16-18 year olds	16-24 year olds	18-24 year olds	19-24 year olds
Q3 2008	13.4%	32.5%	44.1%	23.3%	30.3%	53.9%	62.4%	65.4%
Q4 2008	8.7%	15.2%	36.9%	12.0%	20.5%	46.5%	56.0%	59.2%
Q1 2009	9.3%	18.1%	37.6%	13.8%	21.7%	47.0%	56.2%	59.2%
Q2 2009	11.4%	20.8%	38.8%	16.1%	23.8%	47.8%	56.6%	59.5%
Q3 2009	11.7%	27.5%	41.6%	19.6%	27.2%	51.9%	60.7%	63.9%
Q4 2009	5.8%	12.4%	33.5%	9.2%	17.3%	45.1%	54.9%	58.2%
Q1 2010	6.5%	14.5%	34.8%	10.6%	18.5%	45.3%	54.8%	57.8%
Q2 2010	6.9%	16.1%	33.4%	11.7%	19.1%	45.6%	54.7%	58.2%
Q3 2010	8.7%	26.8%	40.9%	18.1%	25.6%	51.9%	61.2%	64.3%
Q4 2010	5.5%	10.1%	31.2%	7.7%	15.7%	46.1%	56.2%	60.1%
Q1 2011	6.7%	11.8%	31.4%	9.2%	16.7%	45.9%	55.7%	59.5%
Q2 2011	8.4%	16.1%	33.9%	12.2%	19.5%	49.2%	58.9%	62.7%
Q3 2011	10.7%	23.9%	35.1%	17.3%	23.3%	52.1%	61.2%	65.3%
Q4 2011	6.5%	11.7%	28.7%	9.1%	15.7%	45.5%	54.8%	58.7%
Q1 2012	7.3%	12.6%	29.0%	10.0%	16.3%	45.3%	54.5%	58.3%
Q2 2012	8.3%	15.5%	33.1%	11.9%	19.1%	48.2%	57.3%	60.9%
Q3 2012	7.7%	20.7%	35.5%	14.3%	21.4%	50.9%	60.1%	63.7%
Q4 2012	4.9%	8.7%	29.5%	6.8%	14.7%	45.8%	55.6%	59.7%
Q1 2013	5.1%	8.7%	29.4%	7.1%	14.7%	44.8%	54.3%	58.1%
Q2 2013	5.9%	12.8%	32.8%	9.5%	17.0%	46.5%	56.2%	59.5%
Q3 2013	7.1%	23.2%	34.1%	15.5%	21.8%	51.2%	60.1%	63.9%
<i>Source: Labour Force Survey</i>			<i>Period: Q3 2008 to Q3 2013 time series</i>					
<i>Note: Q1 relates to the months January-March, Q2 to April –June, Q3 to July-September and Q4 to October-December</i>								
<i>*Note: the Labour Force Survey has not been reweighted to reflect the Census 2011 population</i>								

Additional tables are published with this brief – these show a regional breakdown of the quarterly NEET statistics for 16-24, 18-24 and 19-24 year olds, and time-series data from 2001. Please see the [DfE NEET Statistics - Quarterly Brief - July to September 2013](#) webpage.