



Phytoplankton variability in relation to some environmental factors in the eastern coast of Suez Gulf, Egypt

Mohamed Z. Nassar · Nihal G. Shams El-Din ·
Samiha M. Gharib

Received: 3 March 2015 / Accepted: 16 September 2015 / Published online: 26 September 2015

© The Author(s) 2015. This article is published with open access at Springerlink.com

Abstract Water samples were seasonally collected from 12 stations of the eastern coast of Suez Gulf during autumn of 2012 and winter, spring, and summer of 2013 in order to investigate phytoplankton community structure in relation to some physicochemical parameters. The study area harbored a diversified phytoplankton community (138 species), belonging to 67 genera. Four algal groups were represented and classified as Bacillariophyceae (90 species), Dinophyceae (28 species), Cyanophyceae (16 species), and Chlorophyceae (4 species). The results indicated a relative high occurrence of some species namely; *Pleurotaenium trabecula* of green algae; *Chaetoceros lorenzianus*, *Proboscia alata* var. *gracillima*, *Pseudosolenia calcar-avis*, and *Pseudonitzschia pungens* of diatoms; *Trichodesmium erythraeum* and *Pseudoanabaena limnetica* of cyanophytes. Most of other algal species were fairly distributed at the selected stations of the study area. The total abundance of phytoplankton was relatively low (average of 2989 unit/L) in the eastern coast of Suez Gulf, as compared its western coast and the northern part of the Red Sea. The diversity of phytoplankton species was relatively high (2.35–3.82 nats) with an annual average

of 3.22 nats in the present study. The results concluded that most of eastern coast of Suez Gulf is still healthy, relatively unpolluted, and oligotrophic area, which is clearly achieved by the low values of dissolved phosphate (0.025–0.3 μM), nitrate (0.18–1.26 μM), and dissolved ammonium (0.81–5.36 μM). Even if the occurrence of potentially harmful algae species was low, the study area should be monitored continuously. The dissolved oxygen ranged between 1.77 and 8.41 mg/L and pH values between 7.6 and 8.41. The multiple regression analysis showed that the dissolved nitrate and pH values were the most effective factors that controlled the seasonal fluctuations of phytoplankton along the eastern coast of Suez Gulf during 2012–2013.

Keywords Phytoplankton · Diversity · Physicochemical parameters · Eastern Suez Gulf · Egypt

Introduction

The northern end of the Red Sea bifurcates into the Sinai Peninsula, creating the Gulf of Suez in the west and the Gulf of Aqaba to the east. The gulf is relatively shallow and formed within a relatively young but now inactive Gulf of Suez Rift basin, dating back about 28 million years. It stretches some 300 km north by northwest, terminating at the Egyptian city of Suez and the entrance to the Suez Canal. Along the mid-line of the gulf is the boundary between Africa and Asia. The length of the gulf, from its mouth at the Strait of Jubal to its head at the city of Suez, is 314 km, and it varies in width from

M. Z. Nassar (✉)
National Institute of Oceanography and Fisheries, B.O.182, Suez,
Egypt
e-mail: mnassar65@yahoo.com

N. G. S. El-Din · S. M. Gharib
National Institute of Oceanography and Fisheries, Alexandria,
Egypt

19 to 32 km. The Gulf of Suez is relatively shallow, with a maximum depth of about 64 m; outside its mouth, the depth drops sharply to about 1255 m.

However, the Suez Gulf is subjected to sources of pollution such as shipping activities, where transport of oil continues to play a critical role in marine pollution in the northern part of the gulf and Suez Canal. On the other hand, extensive oil production operations are taking place in the gulf, both inshore and offshore. In addition, the gulf is subjected to industrial, agricultural, and domestic sewage; thermal pollution from power, desalination plants; and tourism activities (TEAM 2000, and NPA 2003a, b, c). In fact, there is no analysis of the tourism-related literature or recent analysis of impacts. The most published topics relate to coral breakage and its management. A full account of tourism's environmental impacts is constrained by limited tourism data (Gladstone et al. 2013). However, the western coast of the gulf is considered more polluted than the eastern coast due to urbanization resulting from the population expansion, establishment of new industries along the coast such as fertilizer and cement factories, chemicals, and organic wastes from food processing factories at Suez City, and, in addition, to more tourism activities due to the establishment of numerous touristy villages. Thus, the Gulf of Suez could be fairly considered the most polluted area in the Red Sea (TEAM 2000 and NPA 2003a, b, c).

Noticeably, all these pollutants affected the marine ecosystem, which becomes under variable pressure, causing radical changes in marine organisms, including coral reefs, invertebrates, seagrasses, seaweeds, phytoplankton, and others (TEAM 2000 and NPA 2003a, b, c).

In fact, phytoplankton communities are the basis of many marine and freshwater food webs. Their composition fluctuates depending on hydrological conditions, such as light, temperature, salinity, pH, nutrients, and turbulence (Huertas et al. 2011). Typically, diatoms dominate coastal marine communities. However, other groups of phytoplankton can dominate depending on the combination of hydrological conditions and climatic variability (Leterme et al. 2006). Changes in dominant base groups/species often propagate up the food chain, impacting on fish, marine mammals, and birds (Donnelly et al. 2007). Phytoplankton are known to exhibit rapid responses to changes in environmental conditions and are therefore commonly acknowledged as excellent bioindicators of the impact of natural and seasonal changes in coastal ecosystems (Rimet and Bouchez 2012). Their susceptibility to environmental change is

usually expressed by morphological and/or behavioral changes as well as by persistent or seasonally a typical differences in abundance and distribution (Leterme et al. 2010, 2013). Where mono- or class-specific blooms are observed on an annual basis, they often vary significantly in magnitude and/or duration between years (Ji et al. 2006 and Leterme et al. 2014).

The phytoplankton community structure in the northern part of the Red Sea was investigated by several workers and revealed variable biodiversity and community structure according to different ecological conditions and different spatial and temporal scales. Nassar (1994) recorded 76 species including 50 diatoms, 18 dinoflagellates, five blue-green algae, and three species of green algae in Suez Bay of the northern part of Suez Gulf. El-Sherif and Abo El-Ezz (2000) examined the distribution of plankton at Taba, Sharm El-Sheikh, Hurgada, and Safaga at northern Red Sea, recording 41 diatom species, 53 dinoflagellates, 10 cyanophytes, and two chlorophytes. Deyab et al. (2004) recorded 200 phytoplankton species along the Suez Canal, Suez Gulf, and the northern part of the Red Sea with clear dominance of diatoms. Shams El-Din et al. (2005) identified 110 phytoplankton species belonging to seven classes on both sides of the Suez Gulf. Nassar (2007a) studied the phytoplankton dynamics in the western coast of Suez Gulf and recorded 144 species of different groups, and Nassar (2007b) conducted similar study on the phytoplankton abundance in the coastal waters of the Aqaba Gulf, recording 127 taxa. Also, Al-Najjar et al. (2007) studied the seasonal dynamics of phytoplankton in the Gulf of Aqaba. Madkour et al. (2010) reported that the spatial distribution of phytoplankton showed that Gulf of Suez differs in the dominant species and timing of abundance from both Gulf of Aqaba and the southern sites of Sinai Peninsula. Recently, a checklist of 207 phytoplankton species is detected in the Egyptian waters of the Red Sea and some surrounding habitats during the period 1990–2010 (Nassar and Khairy 2014). In fact, the available literatures on phytoplankton population dynamic in the eastern coast of the gulf are scarce, and information is lacking concerning phytoplankton in this area.

The aim of the present work is to follow up the changes that might take place in the standing crop and community structure of the phytoplankton in the coastal waters of eastern coast of the Suez Gulf in response to

changes in the physicochemical characters of water and to compare the results with the previous studies of the surrounding habitats.

Materials and methods

Description of sampling stations

Twelve stations were selected along the eastern coast of the Suez Gulf as shown in Fig. 1. These stations are subjected to different ecological conditions due to the touristic and human activities, sewage and oil effluents, and industrial and thermal effects: St. 1 is located near the Electrical Power Station of Ayon Mousa at about 500 m of the coast and is subjected to thermal water discharge. St. 2 is situated near a tourist village namely Tamara Crouze with low human and tourist activities. St. 3 is located near the beach of Ras Sedr and is subjected to high tourist and human activities especially during summer months. St. 4 is located near a new tourist village namely Daghish village, at which low human and tourist activities were observed. St. 5 is a sandy beach located north of the Hammam Pharaon and is relatively far from the human activities. St. 6 is located

near the Hammam Pharaon hot springs; its water is relatively hot and characterized by high vegetations and bad odors. St. 7 (Abu-Zenima) is situated at about 2.5 km from Abu-Zenima City. St. 8 is located near from the manganese factory of Abu-Zenima and is subjected to Mn effluents of this factory. St. 9 (Abu-Redis) is located in the south of Abu-Redis City and is subjected to sewage and oil effluents discharged from the oil charging and discharging company. St. 10 (Petropil) is situated near the Petropil Oil Company and is subjected also to oil effluents. St. 11 (Al-Konaysa) is located near a fishing harbor of the Fisheries Commission and is subjected to fishing and human activities. St. 12 (Al-Tur) is situated near the eastern side of Al-Tur fishing harbor and is also subjected to fishing and human activities.

Phytoplankton estimations

Water samples were seasonally collected using Ruttiner bottles from the sub-surface waters of different 12 stations during autumn of 2012 (November) and winter (January), spring (April), and summer (August) of 2013 (Fig. 1). Cell abundance and composition of phytoplankton were estimated according to sedimentation

Fig. 1 Positions of the sampling stations (1–12)



method (Utermöhl 1958). The species identification was carried out following Peragallo and Peragallo (1908), Ghazzawi (1939), Cupp (1943), Prescott (1962), Bourrelly (1968), Ferguson (1968), Sournia (1986), Mizuno (1990), and Al-Kandari et al. (2009). Then, the phytoplankton species are updated according to the taxonomic database sites, like *algaebase.com* (ab), World Register of Marine Species (WoRMS), Canadian Register of Marine Species (CaRMS), Nordic Microalgae and Aquatic Protozoa (NOD), and Integrated Taxonomic Information System (ITIS).

Physicochemical parameters

Water temperature was measured by using a simple pocket thermometer graduated to 0.1 °C. The pH value of water samples was measured in situ using a pocket pH meter model Orion 210. Dissolved oxygen was fixed in field and measured according to the modified Winkler's method according to (Strickland and Parsons 1972), and the dissolved inorganic nutrients (NO_3 , NH_4 and PO_4) were determined spectrophotometrically, and the results were expressed in micromolar according to the methods described by APHA (2005).

Statistical analysis

The correlation matrices was applied to total phytoplankton counts, phytoplankton classes, dominant species, and the physicochemical parameters at confidence limit 95 % and $n=47$. Multiple regression was calculated for phytoplankton during each season, using the program of STATISTICA Version 5. Similarity index between the stations of the study area, based on phytoplankton community structure, was calculated, using the program of Primer 5. The species diversity (H') was calculated according to Shannon and Weaver (1963).

Results

Physicochemical parameters

The results of physicochemical parameters of seawater samples collected from the eastern coast of Suez Gulf during 2012–2013 are shown in Table 1.

The temperature was typical of the north part of the Suez Gulf, ranging from a minimum of 17.00 °C during winter at St. 1 and a maximum of 31.50 °C during

summer at St. 7 with an annual mean value of 24.35 °C. The normal thermal cycle was clear in the study area, showing the highest temperature during summer (30.10 °C), while in winter, the lowest ones were reached (18.16 °C).

Seawater pH lied in the alkaline side during all seasons with almost the highest values during summer. The lowest value of pH was recorded during winter at St. 9 (7.60) and the highest during summer at St. 1 (8.41). Whereas, seawater dissolved oxygen (DO) varied between a minimum of 1.77 mg/L during spring at St. 3 and a maximum of 8.41 mg/L during winter at St. 9 with small seasonal differences and an annual average of 4.30 mg O_2 /L.

As far as nutrients are concerned, the reactive phosphate (PO_4) was very low during spring and summer at all stations, whereas the maximum value was recorded during autumn at St. 9 (0.30 μM). The dissolved nitrate (NO_3) in the gulf ranged between a maximum value of 1.26 μM during autumn at St. 9 and a minimum of 0.18 μM during summer at St. 3. The dissolved ammonium (NH_4) varied between a minimum of 0.81 μM during spring at St. 1 and a maximum of 5.36 μM during summer at St. 9, which may be due to the effect of sewage and oil effluents. Generally, nitrate and phosphate exhibited a seasonal cycle with lower concentrations during summer, while dissolved ammonium was the most abundant source of nitrogen during summer (Table 1).

Phytoplankton

Community composition

The study area showed a discrete phytoplankton diversity (138 species), belonging to 67 genera. Four algal groups were represented in the eastern coast of Suez Gulf belonging to Bacillariophyceae (90 species), Dinophyceae (28 species), Cyanophyceae (16 species), and Chlorophyceae (4 species) (Table 2).

The diatoms were the most dominated group, forming about 67.00 % of the total counts of phytoplankton, followed by Cyanophytes that represented about 17.00 % of the total abundance. On the other hand, Dinophyceae and Chlorophyceae formed collectively about 15.50 % of the total counts of phytoplankton (Table 3).

The phytoplankton diversity displayed wide spatial variations. The station 9 was reported as the most

Table 1 Seasonal variations of temperature (°C), pH value, DO (mg O₂/L), and the nutrients PO₄, NO₃, and NH₄ (μM) along the eastern coast of Suez Gulf during 2012–2013

Autumn 2012													
Station	1	2	3	4	5	6	7	8	9	10	11	12	Average
Temp	22.00	23.00	22.40	22.70	23.50	22.80	23.80	23.10	22.60	24.00	23.20	22.20	22.94
pH	8.22	8.00	8.20	8.00	8.00	8.10	8.05	8.12	7.66	7.70	7.80	7.80	–
DO	3.00	3.63	2.38	4.25	3.56	3.30	3.38	3.11	7.50	6.50	4.60	4.32	4.12
PO ₄	0.122	0.166	0.09	0.173	0.147	0.134	0.144	0.126	0.30	0.26	0.186	0.175	0.17
NO ₃	0.55	0.70	0.52	0.71	0.61	0.50	0.61	0.40	1.26	1.10	0.77	0.73	0.71
NH ₄	2.66	1.28	2.32	1.26	1.16	1.53	1.51	1.63	0.84	1.07	1.10	1.17	1.46
Winter 2013													
Temp	17.00	18.40	17.50	18.00	18.8	18.2	19.00	18.6	17.70	19.00	18.50	17.30	18.16
pH	8.30	7.90	8.22	7.90	8.00	8.10	8.10	8.20	7.60	7.85	7.90	7.90	–
DO	3.32	4.14	2.88	4.26	4.1	3.78	3.90	3.40	8.41	7.51	5.27	4.63	4.63
PO ₄	0.11	0.14	0.09	0.14	0.13	0.13	0.11	0.11	0.28	0.25	0.17	0.15	0.15
NO ₃	0.32	0.46	0.37	0.47	0.45	0.42	0.43	0.38	0.93	0.89	0.60	0.52	0.52
NH ₄	4.72	2.28	4.21	2.18	2.32	2.60	2.40	2.96	1.62	1.86	1.90	2.12	2.60
Spring 2013													
Temp	25.00	26.80	25.50	26.20	27.40	26.40	27.00	27.00	26.00	ND	27.20	25.20	26.20
pH	8.32	8.00	8.30	7.90	8.00	8.20	8.17	8.22	7.80	ND	7.83	7.87	–
DO	1.83	3.43	1.77	3.72	3.4	2.74	3.32	2.37	5.25	ND	4.75	4.1	4.425
PO ₄	0.04	0.08	0.04	0.08	0.07	0.06	0.07	0.05	0.12	ND	0.11	0.09	0.10
NO ₃	0.25	0.50	0.26	0.53	0.48	0.4	0.47	0.34	0.75	ND	0.68	0.6	0.64
NH ₄	0.81	1.52	2.18	1.26	1.56	1.71	1.58	1.87	2.40	ND	0.84	1.1	0.97
Summer 2013													
Temp	28.1	30.6	28.7	29.4	31.4	30	31.5	31	29.4	31.2	31.2	28.5	30.1
pH	8.41	8.3	8.4	8.3	8.3	8.35	8.33	8.4	8.3	8.12	8.14	8.26	–
DO	3.1	4.45	2.34	4.53	4.14	3.32	3.42	3.26	4.53	5.37	5.22	4.74	4.03
PO ₄	0.03	0.05	0.02	0.05	0.04	0.04	0.04	0.03	0.05	0.06	0.06	0.05	0.04
NO ₃	0.21	0.34	0.18	0.35	0.26	0.25	0.26	0.24	0.35	0.42	0.4	0.36	0.30
NH ₄	2.55	2.62	4.11	2.55	3.4	3.62	3.46	4.0	5.36	2.1	2.37	2.5	3.22

ND not measured

diversified community (93 species), while station 1 recorded the lowest diversified one (59 species) (Table 2). On the other hand, there were no distinct seasonal variations in phytoplankton diversity, where the three seasons: autumn, winter, and spring harbored closed number of species (64, 66, and 69 species), respectively, whereas the summer harbored relatively low number (53 species).

Regardless of the large number of phytoplankton species in the study area, only nine species were perennial (occurring during the four seasons). These species are *Guinardia flaccida*, *Gyrosigma attenuatum*, *Nitzschia*

longissima, *Nitzschia sigma*, *Odontella obtusa*, *Synedra ulna*, *Thalassiothrix longissima*, *Phormidium* sp., and *Ceratium trichoceros*. Whereas, 21 species appeared during the three seasons and are considered as semi-perennial. The rest number of species was observed either for one or two seasons. On the other hand, there were few species restricted to one station such as *Amphora grevilleana* (St. 1); *Chaetoceros curvisetus*, *Synedra crystallina*, and *Anabaena* sp. (St. 2); *Asterolampra* sp., *Paralia sulcata*, *Dinophysis* sp., and *Phalacroma* sp. (St. 4); *Fragillaria pectinalis* and *Fragillaria construens* (St. 7); *Protoperidinium*

Table 2 Relative counts of the recorded phytoplankton species (unit/L) along the eastern coast of Suez Gulf during 2012–2013

Diatoms	1	2	3	4	5	6	7	8	9	10	11	12
<i>Amphiprora alata</i> (Ehrenberg) Kützing (ab)	+		+	+	+		+		+	+		
<i>Amphiprora paludosa</i> W. Smith (ab)	+	+	+	+	+	+	+	+	+	+	+	+
<i>Amphora grevilleana</i> Gregory (WoRMS)	+											
<i>Amphora lineolata</i> Ehrenberg (ab)		+	+		+	+	+	+	+	+	+	
<i>Amphora marina</i> W. Smith (ab)		+	+	+	+	+	+	+	+	+	+	+
<i>Amphora ovalis</i> (Kützing) Kützing (WoRMS)									+			
<i>Asterionella</i> sp.	+		+									
<i>Asterolampra</i> sp.				+								
<i>Aulacoseira granulata</i> var <i>angustissima</i> (O.F.Müller) Simonsen (ab)	+	+	+	+	+	+	+	+	+	+	+	+
<i>Aulacoseira italica</i> (Ehrenberg) Simonsen (ab)	+	+	+							+	+	+
<i>Bacillaria paradoxa</i> J.F. Gmelin (ab)									+			+
<i>Campylodiscus hibernicus</i> Ehrenberg (ab)	++	+	+	+	+	-	+	+	+	+	+	+
<i>Chaetoceros coarctatus</i> * Lauder (ab)		+	+					+		+	+	-
<i>Chaetoceros curvisetus</i> * Cleve (ab)		+										
<i>Chaetoceros densus</i> * (Cleve) Cleve (ab)									+		+	
<i>Chaetoceros lorenzianus</i> * Grunow (ab)	+	+	+	+++	++	++	+	+	++	+	+	+
<i>Chaetoceros peruvianus</i> * Brightwell (ab)				+					+			
<i>Climacodium biconcavum</i> Cleve (WoRMS)				+	+		+		+	++	++	
<i>Climacosphenia moniligera</i> Ehr. (ab)	+	++	+	+	++	++	++	++	++	+	++	++
<i>Cocconeis placentula</i> Ehrenberg (ab)		+			+	+	+	+	+	+	+	-
<i>Coscinodiscus centralis</i> Ehrenberg (WoRMS)		+						+				
<i>Coscinodiscus granii</i> Gough (ab)		+				+	+	+				
<i>Coscinodiscus marginatus</i> Ehrenberg (ab)		+	+									
<i>Coscinodiscus radiatus</i> Ehrenberg (WoRMS)		+++	-	+	+	+	+	+	+	+	-	-
<i>Cyclotella meneghiana</i> * Kützing (ab)				+		+						
<i>Cymbella aspera</i> Ehrenberg Cleve (WoRMS)									+			
<i>Cymbella</i> sp.	+	+	+	+	+				+			+
<i>Cymbella ventricosa</i> (C.Agardh) C.Agardh (ab)			+	+	+	+	+		+			+
<i>Diploneis interrupta</i> (Kützing) Cleve (ab)				+					++			
<i>Diploneis</i> sp.				+	+		+		+			
<i>Fragillaria pectinalis</i> (O.F.Müller), Lyngbye (ab)							+					
<i>Fragillaria construens</i> Ehrenberg Grunow (ab)							+					
<i>Fragillaria</i> sp.	+	+	+	+				+	+			+
<i>Gramatophora marina</i> (Lyngbye) Kützing (ab)		+		+	+	+	+	+	+		+	
<i>Gramatophora oceanica</i> Ehrenberg (WoRMS)				+		+			+			
<i>Guinardia flaccida</i> (Castracane) H. Peragallo (ab)	+	+++	+	+++	++	++	++	++	+++	++	++	+
<i>Gyrosigma acuminatum</i> (Kützing) Rabenhorst (WoRMS)	+	+	+	+	+	+		+	++		+	+
<i>Gyrosigma attenuatum</i> (Kützing) Rabenhorst (ab)	+++	++	++	++	++	++	++	++	+++	+++	++	+++
<i>Gyrosigma balticum</i> (Ehrenberg) Rabenhorst (WoRMS)	+	+	+	+		+			+			+
<i>Hemiaulus membranaceus</i> Cleve				+		+			+			
<i>Hemiaulus sinensis</i> Greville									+			
<i>Lauderia annulata</i> Cleve (WoRMS)											+	
<i>Leptocylindrus danicus</i> (ab)		+		+	+	+	+	+		+++	+	
<i>Leptocylindrus minimus</i> Granv (WoRMS)	+++	+++	+	+	++	+	++	++	+	+	+	+

Table 2 (continued)

Diatoms	1	2	3	4	5	6	7	8	9	10	11	12
<i>Leptocylindrus</i> sp.	+		+	+					+			+
<i>Licmophora abbreviata</i> C. Agardh (ab)				+					+			
<i>Licmophora flabellata</i> C. Agardh (ab)	+	+	++	++	+	++	+	++	++	++	+	++
<i>Licmophora gracilis</i> (Ehrenberg) Grunow (WoRMS)	+	+	+	+	+	+	+	+	+	+	+	+
<i>Mastogloia</i> sp.		+					+	+			+	
<i>Melosira</i> sp.				+								+
<i>Melosira varians</i> C. Agardh (ab)	+							+		+	+	
<i>Navicula dicephala</i> (Ehrenberg) W. Smith (ab)			+	+			+		+			+
<i>Navicula tripunctata</i> (O.F. Müller) Bory de Saint-Vincent (WoRMS)	+	+	+	++	+	+	+	+	+	+	+	+
<i>Navicula placentula</i> (Ehrenberg) Kützing (ab)				+	+	+	+		++	+	+	
<i>Navicula</i> sp.			+	+		+	+		+			+
<i>Nitzschia acicularis</i> (Kütz.) W.Sm.	+	+	+	+	+	+	+	+	++	+	+	+
<i>Nitzschia closterium</i> * (Ehrenberg) W. Smith (ab)	+		+	+					+			+
<i>Nitzschia longissima</i> * Brébisson Ralfs in Pritchard (ab)	++	+	+	+	++	+	+	++	++	++	+++	+
<i>Nitzschia obtusa</i> W. Smith (ab)	+	+	+	+	+	+	+	+	+	+	+	+
<i>Nitzschia pungens</i> * var. atlantica (Grunow ex Cleve) G.R.Hasle, (ab)	+	+	+	+++	++	++	+	++	+++	+	++	+
<i>Nitzschia sigma</i> (Kützing) W. Smith (ab)	+	+	+	++	+	++	++	+	++	++	+++	++
<i>Nitzschia vermicularis</i> (Kütz.) Hantzsch in Rabenh	+						+					
<i>Odontella aurita</i> (Lyngbye) C.A. Agardh (ab)		+	+	+	+	+	+	+				
<i>Odontella obtusa</i> (Kützing) Ralfs (ab)	+	++	+	+	+	+	+	++	+	+	++	++
<i>Odontella sinensis</i> (Greville) Grunow (WoRMS)									+			
<i>Paralia sulcata</i> (Ehrenberg) Cleve (ab)				+								
<i>Plagiotropis lepidoptera</i> (Gregory) Kuntze (ab)		+	+	+	+	+	+	+	++	+	+	
<i>Pleurosigma angulatum</i> W. Smith (ab)		+			+	+	+	+	+	+	+	
<i>Proboscia alata var.gracillima</i> * (Brightwell) Sündstrom (ab)	++	+++	++	+++	+++	++	+++	+++	+++	++	++	+++
<i>Proboscia alata form indica</i> * Brightwell Sündstrom (ab)		+	+	++					+			
<i>Pseudosolenia bergoni</i> H. Pérageallo (ab)									+			
<i>Pseudosolenia calcar avis</i> (Schultze) Sundström (ab)	++	+++	++	+++	+++	++	++	+++	+++	+++	+++	++
<i>Rhizosolenia fragilissima</i> Bergon		+	+	+	+	+	+				+	
<i>Rhizosolenia imbricata</i> (Cleve) Schröder WoRMS)		++++	+	+	+	+	+	+	+++		++	
<i>Rhizosolenia stoterfothii</i> H. Perageallo (ab)		+	+	+	+	+	+			+	+	
<i>Rhizosolenia styliformis</i> Brightwell (ab)	+	+	+	+					+	+	+	+
<i>Skeletonema costatum</i> * (Greville) Cleve (ab)	+	+	+	+		+			+			+
<i>Stephanopyxis turis</i> (Greville & Arnott in Gregory) Ralfs in Pritchard		+						+	-	+	+	
<i>Striatella unipunctata</i> (Lyngbye) C. Agardh (ab)				+					+			
<i>Surirella minuta</i> Brébisson (WoRMS)	++	+	++	+	+	+	+	+	+	+	+	+
<i>Surirella robusta</i> Ehrenberg (ab)	+		+									+
<i>Synedra acus</i> Kütz.	+	+	+	+		+	+		+			+
<i>Synedra crystalline</i> (C.Agardh) Kützing (WoRMS)		+										
<i>Synedra ulna</i> (Nitzsch) Ehrenberg (ab)	++	++	+	++	++	++	++	++	++	++	+++	++
<i>Synedra undulata</i> (J.W.Bailey) Gregory (ab)	+	+	+		+	+	+	+	+	+	+	+
<i>Thalassionema nitzschioides</i> * (Grunow)	+	+	+	+	+			+	+		+	+

Table 2 (continued)

Diatoms	1	2	3	4	5	6	7	8	9	10	11	12
Mereschkowsky (ab)												
<i>Thalassiosira</i> sp.	+				+	++	++					
<i>Thalassiothrix frauenfeldii</i> (Grunow) Grunow (WoRMS)		++		++	+	+		+	++	+	+	
<i>Thalassiothrix longissima</i> Cleve & Grunow (ab)	++	++	++	+++	++	++	++	++	+++	+++	+++	+++
<i>Trachyneis aspera</i> (Ehrenberg; Ehrenberg) Cleve		+		+	++	+	+	+		+	++	
Cyanophytes												
<i>Anabaena</i> sp.		+										
<i>Chroococcus minutus</i> (Kütz.) Nägeli	+		++		++		+	+	+		+	+
<i>Chroococcus turigidus</i> (Kützing) Nägeli (ab)		+	+		+				+			+
<i>Coelosphaerium</i> sp.	+		+	+	+	+			+		+	+
<i>Lyngbya major</i> Meneghini ex Gomont (ab)								+		++	+	
<i>Lyngbya majuscula</i> Harvey ex Gomont (WoRMS)		+			+		+			++	+	
<i>Microcystis</i> sp.		+	+	+	+				+		+	+
<i>Trichodesmium erythraeum</i> *(Ehrenberg) Geitler (ab)	+	+	+	+	+++	+	+++	++	++	++++	+++	+++
<i>Pseudanabaena limnetica</i> * (Lemmermann) Komárek (ab)	++	++	++	+	+++	++	+++	++	++	+++	++	++
<i>Oscillatoria simplicissima</i> * Gomont (WoRMS)		+	+	+	+	+	+	++	+	+++	+	++
<i>Oscillatoria</i> sp.	+	+++	++	+	++	+	++	+	++	++	++	++
<i>Oscillatoria tenuis</i> * C. Agardh (WoRMS)		+	+		+		+	+	+	++	+	+
<i>Phormidium</i> sp.	++	++	++	+	++	++	++	++	++	+++	++	++
<i>Planktothrix formosa</i> *	+	+	+	+	+	+	+	+	+	++	+	++
<i>Spirulina major</i> Kützing ex Gomont (WoRMS)	++											+
<i>Spirulina</i> sp.			+							+		
Dinoflagellates												
<i>Ceratium breve</i> (Ostenfeld & Schmidt) Schroder (ab)	+		+							+	+	+
<i>Ceratium egyptiacum</i> Halim (ab)									+			
<i>Ceratium extensum</i> (Gourret) Cleve-Euler (ab)	+						+					+
<i>Ceratium furca</i> * (Ehrenberg) Claparède & Lachmann (WoRMS)	+	+	+	+				+	+			+
<i>Ceratium fusus</i> * (Ehrenberg) Dujardin (ab)	+		+		+				+			+
<i>Ceratium karstenii</i> Pavillard (WoRMS)									+			
<i>Ceratium macroceros</i> (Kofoid) Peters (ab)	+	+	+		+			+	+		+	+
<i>Ceratium massiliense</i> (Gourret) E.G.Jørgensen (ab)	+	+	+	+		+	+	+	++		+	+
<i>Ceratium trichoceros</i> (Ehrenberg) Kofoid (WoRMS)	+	+	+	++	+	+	+	+	++	+++	+++	+
<i>Ceratium tripos</i> * (O.F.Müller) Nitzsch (WoRMS)	+	+	+	+	+	+	+	+	+	++	++	+
<i>Dinophysis caudata</i> * Saville-Kent (ab)		+							+	+	+	
<i>Dinophysis</i> sp.				+								
<i>Diplopsalis lenticula</i>						+			+		+	
<i>Exuviaella compressa</i> (Bailey) Knudsen & in Ostenfeld (ab)		+		+	+	++	+	+	+	++	++	
<i>Goniaulax</i> sp.					+		+			+		
<i>Gymnodinium</i> sp.				+					+			
<i>Oxytoxum gracile</i> J.Schiller						+					+	
<i>Phalacroma</i> sp.				+								
<i>Podolampas palmipes</i> Stein		+				+		+				
<i>Prorocentrum compressum</i> (J.W. Bailey) Abé ex Dodge									+			

Table 2 (continued)

Diatoms	1	2	3	4	5	6	7	8	9	10	11	12
<i>Prorocentrum micans</i> * Ehrenberg (ab)		+		+								
<i>Prorocentrum minimum</i> * (Pavillard) Schiller		+					+		+	+		
<i>Protoperdinium minutum</i> (Kofoid) Loeblich III		+		+	+	+	+	+	+	+	+	
<i>Protoperdinium cerasus</i> (Paulsen) Balech (ab)	+	+	+	+	+	+	+	+	+	+	+	+
<i>Protoperdinium depressum</i> (Bailey) Balech (CaRMS)		+				+		+		+		
<i>Protoperdinium divergens</i> (Ehrenberg) Balech (CaRMS)								+				
<i>Protoperdinium ovatum</i> Pouchet (CaRMS)				+		+						
<i>Pyrophacus horologicum</i> Stein (ab)		+							+			
Chlorophytes												
<i>Dictyosphaerium</i> sp.		+										+
<i>Pediastrum clathratum</i> . (Schröder) Lemmermann (ab)												+
<i>Pleurotaenium trabeculum</i> Nägeli (ab)	+++	+	+++	+++	++++	+++	++++	+++	+++	+++	+++	+++
<i>Treubaria crassipina</i> G. M. Smith (WoRMS)4							+	+		++		0

0–50 rare +, >50–100 frequent ++, >100–200 common +++, >200 abundant ++++

The species marked with asterisks are potential harmful

divergens (St. 8); *Amphora ovalis*, *Cymbella aspera*, *Hemiaulus sinensis*, *Odontella sinensis*, *Rhizosolenia bergoni*, *Ceratium egyptiacum*, *Ceratium karastenii*, and *Prorocentrum compressum* (St. 9), whereas *Pediastrum clathratum* appeared only at St. 11 (Table 2).

Seasonal and spatial variations of phytoplankton community

The diatoms prevailed during all seasons forming numerically the highest percentage (82 %) during winter, followed by cyanophytes, which formed the highest percentage during summer (24 %). The chlorophytes were absent during winter at all stations and formed almost equal percentages during the three other seasons. The fourth group, dinoflagellates, formed numerically (5–13 %) of the total count during the study period. Like the seasonal pattern, the spatial distribution of phytoplankton revealed the dominance of diatoms at all stations (Table 3), forming numerically from 57 % (St. 10) to 80 % (St. 4). The cyanophytes and chlorophytes showed the inverse pattern, recording the highest percentage (26 %, St. 10) and the lowest (8 %, St. 4) for the former and (11 %, St. 10; 3 %, St. 4) for the later. The dinoflagellates displayed the highest contribution at St. 9

(13 %) and the lowest one at St. 5 (5 %) as shown in Fig. 2.

Standing crop

The total abundance of phytoplankton was relatively low in the present study of the eastern coast of Suez Gulf (average of 2989 unit/L) as compared with the previous studies (Table 4). The total phytoplankton showed the highest counts during autumn 2012 with an average of 3801 unit/L, followed by winter (average of 2973 unit/L), spring (average of 2713 unit/L), and summer (average of 2469 unit/L) as shown in Table 3 and Fig. 2. The peak of autumn was due to the co-dominance of *C. lorenzianus* (4.24 %), *G. attenuatum* (6.16 %), *P. pungens* (4.05 %), *P. alata* var. *gracillima* (4.37 %), *P. calcar-avis* (7.35 %), *T. erythraeum* (3.98 %), *Pseudanabaena limnetica* (3.75 %), and *P. trabecula* (9.41 %). However, some of these species were also observed with relative high counts during summer and spring, 2013 such as *P. alata* var. *gracillima*, *P. calcar-avis*, and *P. trabecula*. Most of other algal species were fairly distributed at the different stations in the coastal waters of eastern coast of Suez Gulf during 2012–2013.

Table 3 Seasonal variations of phytoplankton counts (unit/L) at the different stations along the eastern coast of Suez Gulf

Autumn 2012														
Station	1	2	3	4	5	6	7	8	9	10	11	12	Average	Percentage
Algal group														
Diatoms	1790	1980	1286	3185	2598	2051	2035	2374	2703	3738	3696	2045	2457	65 %
Dinoflagellates	233	278	167	328	50	217	67	100	980	167	484	278	279	7 %
Cyanophytes	278	362	457	300	756	328	678	551	317	2355	1167	561	676	18 %
Chlorophytes	378	200	233	233	400	333	450	250	250	633	311	1000	389	10 %
Total	2679	2820	2143	4046	3804	2929	3230	3275	4250	6893	5658	3884	3801	100 %
Winter 2013														
Diatoms	1657	1970	2319	2748	2481	2280	1967	1870	3997	1943	2002	3917	2429	82 %
Dinoflagellates	200	295	78	228	228	328	451	195	384	401	134	250	264	9 %
Cyanophytes	0	178	379	0	601	67	100	67	467	311	67	1111	279	9 %
Chlorophytes	0	0	0	0	0	0	0	0	0	0	0	0	0	0 %
Total	1857	2443	2776	2976	3310	2675	2518	2132	4848	2655	2203	5278	2973	100 %
Spring 2013														
Diatoms	1002	2004	1364	3042	1374	2265	1947	1601	3393	Nd	1881	841	1883	69 %
Dinoflagellates	117	128	100	357	0	167	0	145	134	ND	145	100	127	5 %
Cyanophytes	311	367	345	245	751	473	667	578	478	ND	818	324	487	18 %
Chlorophytes	150	278	200	100	178	100	133	356	333	ND	378	178	217	8 %
Total	1580	2777	2009	3744	2303	3005	2747	2680	4338	ND	3222	1443	2713	100 %
Summer 2013														
Diatoms	1635	2285	929	1112	1108	857	967	1302	1835	845	1547	1290	1309	53.03 %
Dinoflagellates	167	506	167	234	312	234	117	251	596	117	829	195	310	12.57 %
Cyanophytes	754	1161	748	412	756	306	562	333	678	345	533	440	586	23.72 %
Chlorophytes	200	78	233	78	378	100	1000	100	133	666	100	100	264	10.68 %
Total	2756	4030	2077	1836	2554	1497	2646	1986	3242	1973	3009	2025	2469	100 %
Total average														
Diatoms	1521	2060	1475	2522	1890	1863	1729	1787	2982	2175	2282	2023	2026	67.48 %
Dinoflagellates	179	302	128	287	148	237	159	173	524	228	398	206	247	8.24 %
Cyanophytes	336	517	354	239	716	294	502	382	485	1004	646	609	507	16.89 %
Chlorophytes	182	139	167	103	239	133	396	177	179	433	197	320	222	7.39 %
Total	2218	3018	2123	3151	2993	2527	2785	2518	4170	3840	3523	3158	3002	100 %

*Note: ND means not measured

On the spatial scale, the average total count was relatively low in all stations. The relatively high abundance was recorded at St. 9 followed by St. 10 with total counts of 4170 and 3840, respectively, whereas St. 1 and St. 3 sustained the lowest average total counts (2218 and 2123 unit/L, respectively) (Table 3). However, St. 9 sustained relatively high counts of phytoplankton during the whole period, due to the co-dominance of *P. pungens* (3.06 %), *P. alata* var. *gracillima* (3.39 %), *P. calcar-avis*

(3.80 %), and *P. trabecula* (4.29 %). The species *P. trabecula* appeared also at St. 10 (9.54 %), with the contribution of *Melosira granulata* (4.77 %), *T. longissima* (3.90 %), *T. erythraeum* (5.78 %), and *P. limnetica* (3.76 %).

Species diversity

The total average of diversity in the eastern coast of Suez Gulf was 3.22 (Table 5). The diversity of

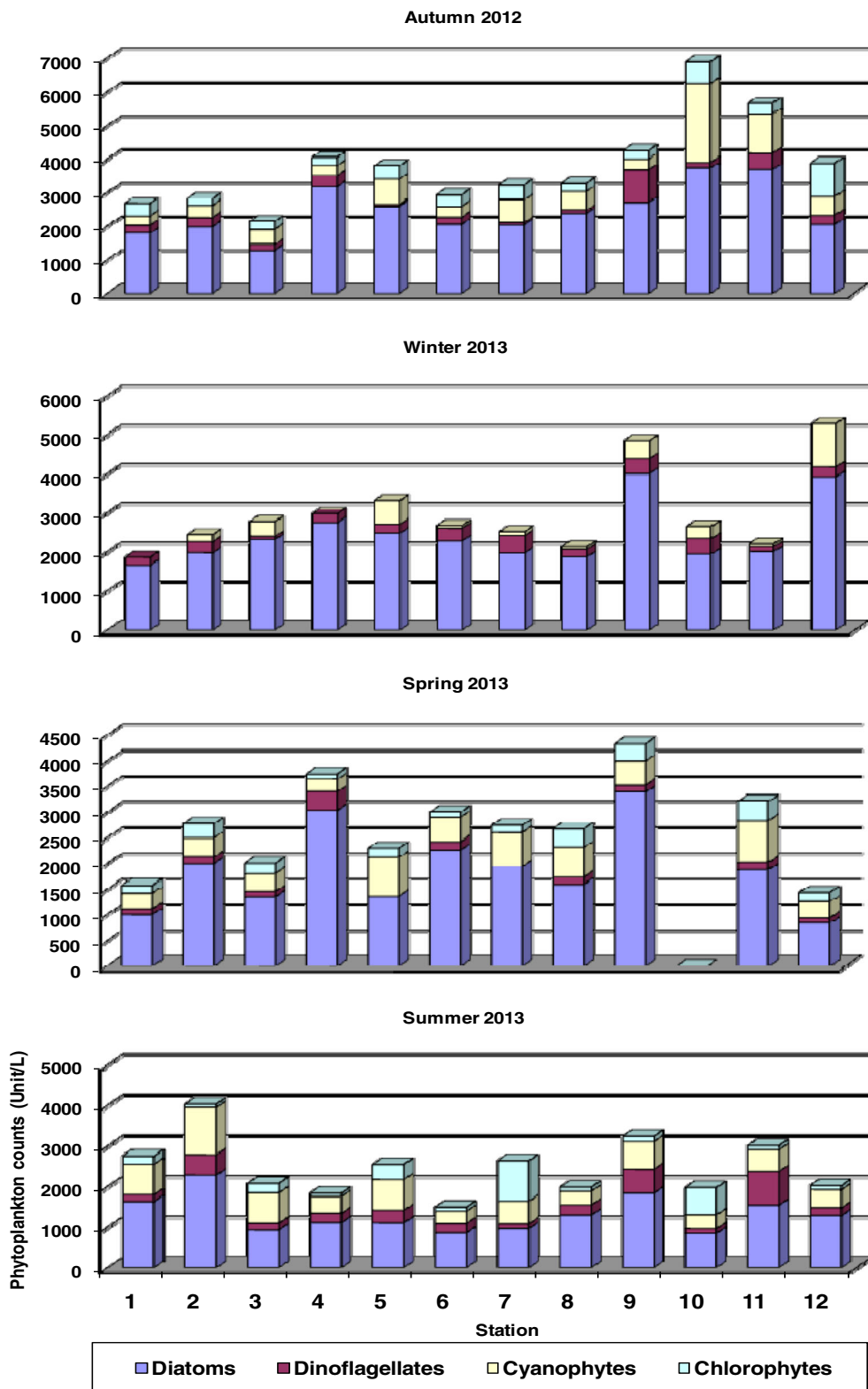


Fig. 2 Seasonal variations of phytoplankton abundance (unit/L) at the different stations in the eastern coast of Suez Gulf during 2012–2013

Table 4 The number of species and abundance of phytoplankton in Suez Gulf

Algal group	Western coast of Suez Gulf, Nassar (2000)				Western coast of Suez Gulf, Nassar (2007a)				Eastern coast of Suez Gulf (present study)			
	G	spp	Total counts	%	G	spp	Total counts	%	G	spp	Total counts	%
Diatoms	28	47	4252	72.53	40	89	10958	70.30	42	90	2019	67.54
Dinoflagellates	9	18	1278	21.80	11	30	957	6.13	12	28	245	8.20
Cyanophytes	3	4	314	5.35	7	12	802	5.14	9	16	507	17.00
Chlorophytes	0	0	0	0.00	10	12	2869	18.4	4	4	218	7.29
Euglenophytes	0	0	0	0.00	1	1	5	0.03	0	0	0	0.00
Silicoflagellates	1	1	17	0.29	0	0	0	0.00	0	0	0	0.00
Total	41	70	5862	100	69	144	15591	100	67	138	2989	100

phytoplankton sustained a maximum of 3.82 during winter at St. 9, in which the highest numbers of phytoplankton species were observed (49 spp.). On the other hand, the minimum diversity of 2.35 was found during summer at St. 7, in which the lowest numbers of species were recorded (19 spp.). On the temporal scale, the winter season sustained relatively higher diversity (3.43), whereas the other three seasons sustained relatively closed diversities (Table 5). Spatially, St. 1 and 12 sustained the lowest average of diversity (2.97 and 3.03), respectively, against the highest diversity at St. 9 (3.47).

Statistical analysis

Correlation matrices and multiple regressions

The statistical analysis of the data indicated that the phytoplankton abundance was positively correlated with nitrate ($r=0.66$) and dissolved oxygen ($r=0.51$) but inversely correlated with pH values ($r=-0.63$), whereas the groups and dominant species showed varied correlations with physicochemical characteristics as shown in Table 6. The multiple regression analysis

indicated that the dissolved nitrate and pH values were the most effective factors that controlled the seasonal fluctuations of phytoplankton in the eastern coast of Suez Gulf during 2012–2013. The regression model was phytoplankton counts = $1379.2341 + 0.662 \text{ NO}_3 - 0.33 \text{ pH}$ ($\text{MR}=0.662, N=47, p<0.1278$). The similarity index revealed four clusters (Fig. 3).

Discussion

Coastal waters are characterized by a high degree of spatial and temporal variability of environmental parameters (Bosak et al. 2012). These ecosystems face increasing anthropogenic influences, mainly due to the increasing human population density in coastal areas, and are described as “critical transition zones” because of their position at terrestrial, freshwater, and marine interfaces (Levin et al. 2001). Therefore, in any evaluation of the ecological consequences of human activities, such as urbanization and tourism, on the functioning of coastal ecosystems, it is essential to determine the basic structural properties of phytoplankton assemblages in these marine areas (Bosak et al. 2012). The reason is that they play a central role in the structure and functioning of

Table 5 Seasonal variations of species diversity (nats) at the different stations in the eastern coast of Suez Gulf

Station	1	2	3	4	5	6	7	8	9	10	11	12	Average
Autumn 2012	2.71	3.28	3.02	3.06	3.13	3.06	3.09	3.22	3.43	3.35	3.44	2.75	3.13
Winter 2013	3.06	3.46	3.28	3.61	3.52	3.42	3.61	3.26	3.82	3.6	3.15	3.33	3.43
Spring 2013	3.00	3.43	3.11	3.67	3.27	3.37	3.34	3.12	3.41	ND	3.48	2.86	3.28
Summer 2013	3.11	3.4	2.88	3.00	2.88	2.93	2.35	3.14	3.24	3.36	3.33	3.19	3.06
Average	2.97	3.39	3.07	3.33	3.20	3.19	3.09	3.18	3.47	3.43	3.35	3.03	3.22

Table 6 The correlations between total phytoplankton counts, phytoplankton classes, dominant species, and the physicochemical parameters during 2012–2013

	Temp	pH	DO	PO ₄	NO ₃	NH ₄
	°C	–	Mg O ₂ /L	μM		
Total phytoplankton	–0.20	–0.63	0.51	0.44	0.66	–0.47
Diatoms	–0.51	–0.69	0.48	0.69	0.63	–0.46
Dinoflagellates	0.01	–0.22	0.52	0.33	0.34	–0.09
Cyanophytes	0.27	–0.18	0.19	0.14	0.27	–0.18
Chlorophytes	0.38	–0.08	–0.02	0.02	0.17	–0.22
<i>Chaetoceros lorenzianus</i>	–0.08	–0.35	0.07	0.42	0.50	–0.51
<i>Gyrosigma attenuatum</i>	0.09	–0.20	0.14	0.39	0.49	–0.27
<i>Pseudosolenia calcar-avis</i>	0.10	–0.24	–0.03	0.28	0.40	–0.49
<i>Pleurotaenium trabecula</i>	0.38	–0.02	–0.05	–0.03	0.11	–0.16
<i>Proboscia alata</i> var. <i>gracillima</i>	0.33	0.27	0.07	–0.10	–0.15	0.23
<i>Pseudo-nitzschia pungens</i>	–0.45	–0.43	0.31	0.63	0.52	–0.32
<i>Trichodesmium erythraeum</i>	0.29	–0.15	0.17	0.14	0.25	–0.17
<i>Pseudanabaena limnetica</i>	0.50	0.10	–0.01	–0.04	0.10	–0.03

Bold correlations are significant at $p < 0.05$ and $n = 47$

freshwater and marine ecosystems (Pourafrahyabi and Ramezanpour 2014). Phytoplankton populations are well known to be influenced by space-time variations in hydrochemical and physical parameters (Cloern et al. 1989), such as light, temperature, salinity, pH, nutrients, and turbulence (Leterme et al. 2006).

Variations in pH can affect algal growth in a number of ways. It can change the distribution of carbon dioxide species and carbon availability, alter the availability of trace metals and essential nutrients, and at extreme pH levels potentially cause direct physiological effects (Chen and

Durbin 1994). In general, changes in pH levels in marine systems appear to correlate with changes in temperature, dissolved oxygen, and phytoplankton production. Conditions of high pH, high phytoplankton production, and low oxygen conditions are characteristic of nutrient-enriched systems and often are found in the coastal waters (Hinga 2002). However, high pH levels are commonly seen in the late afternoon of sunny summers after the consumption of the CO₂ by photosynthesis process. After sunset, the pH level may significantly be declined due to ending the photosynthesis process (Ghobrani et al. 2014). In the present study, the highest pH value was recorded during summer and a negative correlation was found between the pH values and phytoplankton ($r = -0.63$) and dissolved oxygen ($r = -0.67$).

Oxygen concentration is an index of the balance between processes of food production and food consumption. This balance is a key descriptor of the changing status of the ecosystem. When the balance is disrupted, the oxygen concentration can fall to low levels (Kemker 2013). Accordingly, the study area is well balanced due to the recorded moderate to high values of oxygen. These values synergized with that of phytoplankton ($r = 0.51$). Generally, the slight increase

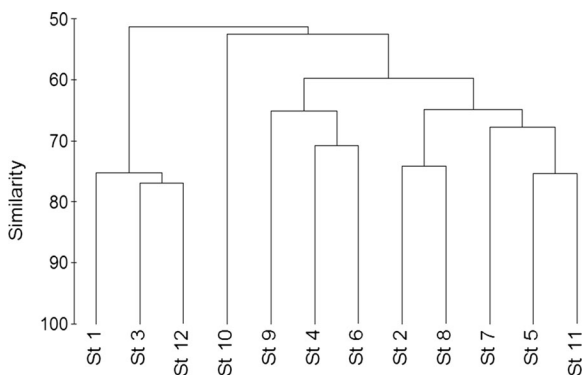


Fig. 3 Bray-Curtis of similarity of phytoplankton abundance between the different stations

in dissolved oxygen during winter and spring may be due to the increase of oxygen solubility (Nassar 1994). However, the oxygen concentration in the Red Sea is relatively low because of its high salinity and high temperature characteristic of the area (Nassar 2007a). This is also confirmed by Gab-Alla (2007) who reported that Hammam Pharaon hot springs of eastern Suez Gulf (St. 6 in the present study) was slightly acidic (pH 6.3–7.6) and hot (temperature of 25–66 °C) with low oxygen content (0.2–5.5 mg/L) and high salinity (43 ‰).

The nutrient enrichment of coastal waters is generally the main factor driving the succession and composition of phytoplankton communities (Leterme et al. 2014). Phosphorus availability can impact primary production rates in the ocean as well as species distribution and ecosystem structure and in some marine and estuarine environments; P availability is considered the proximal macronutrient that limits primary production (Paytan and McLaughlin 2007). Generally, the study area exhibited low phosphate concentrations typical of oligotrophic areas (Taş 2013), except the high concentration during autumn at St. 9 (0.30 µM), which may be due to the effect of sewage and oil effluents. However, compared with the water of the Red Sea proper, the Gulf of Suez has very little phosphate and the Red Sea itself is depleted in phosphate as compared to the Gulf of Aden (El-Naggar et al. 2002). In the present study, only diatoms was positively correlated to dissolved phosphate ($r=0.69$), whereas it was not a limiting factor for other groups.

The inorganic nitrogen pollution in aquatic ecosystems may stimulate the development, maintenance, and proliferation of primary producers resulting in eutrophication of aquatic ecosystems. The Cyanophyceae, Dinophyceae, and Bacillariophyceae appeared to be the major groups that may be stimulated by inorganic nitrogen pollution (Camargo and Alonso 2006).

In general, the high nitrate concentrations enhance the phytoplankton growth during the study period. This was confirmed by the positive correlation between NO_3 and the total counts of phytoplankton ($r=0.66$) and the regression analysis (phytoplankton counts = $1379.2341 + 0.662 \text{NO}_3 - 0.33 \text{pH}$). However, natural phytoplankton communities typically prefer to take up nitrogen in the reduced form of ammonium rather than the oxidized forms nitrite and nitrate. In the present study, there was no correlation between total phytoplankton abundance and ammonium, whereas there

was a negative correlation between diatoms and ammonium ($r=-0.46$). This may be due to that various phytoplankton groups and taxa exhibit differential abilities to take up and assimilate dissolved organic nitrogen vs. dissolved inorganic nitrogen (Twomey et al. 2005). According to the low values of dissolved phosphate (0.025–0.3 µM), nitrate (0.18–1.26 µM), and ammonium (0.81–5.36 µM) during 2012–2013, the eastern coast of Suez Gulf is still healthy, relatively unpolluted, and oligotrophic area. This is established with the data reported by Fahmy (2003) who concluded that nitrogen, phosphorus, and reactive silicate concentrations were generally low and allowed classifying the Egyptian Red Sea coastal water as oligotrophic to mesotrophic. This is in addition to the relatively low total abundance of phytoplankton (average of 2989 unit/L), compared with the data reported in its western coast in 1995 (average of 5862 unit/L) by Nassar (2000) and in 2006 (average 15,591 unit/L) by Nassar (2007a), as well as the data reported in 2002 by Shams El-Din et al. (2005) along the both sides of Suez Gulf (average of 6284 unit/L). However, Ghobrani et al. (2014) mentioned that oligotrophic waters are characterized by high clarity and little counts of algae.

However, the relative high abundance of phytoplankton in this study was found at St. 9 followed by St. 10 with total counts of 4169 and 3840 unit/L, respectively. This may be due to their subject to fractions of petroleum hydrocarbons and sewage discharge, which could promote the phytoplankton growth as reported by Nayar et al. 2005 and Nassar et al. 2014. On the other hand, the lowest occurrence of phytoplankton was recorded at St. 1 and St. 3, with similar total counts of 2218 and 2251 unit/L, respectively. This may be due to the effect of thermal waters discharged from the cooling systems of the Electrical Power Station of Ayon Mousa near St. 1, as well as the high tourist and human activities at the beach of Ras Sudr near St. 3.

As all marine coastal areas, diatoms were the dominant group forming high percentage (67.48 %) and prevailed during the four seasons (53.03–82 %) and at all stations (57–80 %). Whereas, the cyanophytes were the second dominant group, indicating the presence of freshwater discharge in the study area. On the other hand, the contribution of three groups Cyanophyceae, Dinoflagellates, and Chlorophyceae increased during summer at high temperature (28.1–31.5 °C). Eker and Kideyş (2000) suggest that there is a positive relationship between dinoflagellates and water temperature;

thus, dinoflagellates may be better adapted to the high temperatures. Most dinoflagellates are found in temperate waters, are most prevalent in summer months (Taylor 1987), and dominate the phytoplankton in warm seasons (Tait 1981). In this connection, Schabhüttl et al. (2012) reported that green algae and diatoms showed a trend to perform better at lower temperatures, while Cyanobacteria showed stronger responses with increasing temperatures in mixed communities. In the present study, temperature was negatively correlated with diatoms ($r=-0.51$) and was positively correlated with chlorophytes ($r=0.38$), whereas it was not a limiting factor for dinoflagellates and cyanophytes.

However, the dominant species during this study were *C. lorenzianus*, *G. attenuatum*, *P. calcar-avis* in addition to the green alga *P. trabecula*, which appeared at all stations and during all seasons, except winter, indicating the freshwater discharge. Moreover, there were dominant potentially harmful algae, and they appeared frequently and were *P. alata* var. *gracillima* (Özman-Say and Balkis 2012), *P. pungens* (IOC, Casteleyn et al. 2008), and the two cyanophytes *T. erythraeum* and *P. limnetica* (Ramos et al. 2005). Whereas, other potential harmful algae appeared but less frequently or occasionally, such as *Chaetoceros* spp. (Malone 2007), *Cyclotella meneghiana*, *Cylindrotheca closterium*, *Leptocylindrus minimus*, *Skeletonema costatum* (Ismael 2014), *N. longissima*, *Odentella auriata*, *Thalassionema nitzschioides*, *Ceratium fusus*, *Ceratium furca* (Özman-Say and Balkis 2012), *Ceratium tripos* (Ignatiades and Gotsis-Skretas 2010), and *Prorocentrum micans* (Tilstone et al. 2010). The effect of these species is different, as water coloration and foam or mucilage production (Méndez and Ferrari 2002), clogging the fish gills (Malone 2007), secreting domoic acid (Ignatiades and Gotsis-Skretas 2010), anatoxin, mycrocystins (Ramos et al. 2005), or unknown toxins (Ignatiades and Gotsis-Skretas 2010). Although the total count of these species did not exceed 100 cells/L, they are considered dangerous as they can flourish at favorable conditions and they can potentially threaten the marine ecosystem (Van Dolah 2000). Thus, the effect of the environmental conditions on the potential harmful dominant species was investigated. The correlation coefficient between the dominant species and the nutrients revealed that *C. lorenzianus* was positively correlated between phosphate ($r=0.42$) and nitrate ($r=0.50$) and negatively correlated with ammonium ($r=-0.51$), whereas *G. attenuatum* was positively

correlated with nitrate ($r=0.49$). The diatomate species *P. calcar-avis* was positively correlated with nitrate ($r=0.40$) and negatively correlated with ammonium ($r=-0.49$), and *P. pungens* was negatively correlated with temperature and pH ($r=-0.45$ and -0.43), respectively, and positively correlated with phosphate and nitrate ($r=0.63$ and $r=0.52$), respectively. However, the cyanophyte *P. limnetica* was influenced only by temperature ($r=0.50$). On the other hand, *P. trabecula*, *P. var. gracillima*, and *T. erythraeum* were not affected by any of these physicochemical parameters.

Marine systems are highly dynamic, with biodiversity changing at seasonal and inter-decadal timescales (Nicholas et al. 2010). The relationship between diversity and productivity has been an object of extensive research for both terrestrial and aquatic ecosystems, and the global diversity patterns observed for marine phytoplankton show a unimodal relationship with productivity using phytoplankton biomass as surrogate (Irigoien et al. 2004). High diversity leads to greater community stability and productivity and makes the system less susceptible to invasions (Tilman 1999). In this trend, Friedly (2001) found that diversity was positively related to ecosystem stability, whereas unstable ecosystem will be more likely losses diversity. Meanwhile, Whilm and Doris (1966) mentioned that diversity less than 1 indicates instability or heavy pollution, whereas value exceeding 3 indicates stability or clean water. Accordingly, the stations of study area can be considered stable, where all values were closed to 3 or >3 , except St. 7 during summer (2.35), which may be attributed to the low number of the recorded species (19 spp.) and the dominance of only three species: *P. trabecula* (37.79 %), *P. alata* var. *gracillima* (11.34 %), and *P. limnetica* (6.73 %).

The similarity index based on spatial and temporal fluctuations of phytoplankton counts revealed five clusters: cluster 1 (St. 1, 3, and 12), cluster 2 (St. 10), cluster 3 (St. 4, 6, and 9), cluster 4 (St. 2, 8, 5, 7, and 11). The lowest similarity level was 41.11 % between St. 1 and St. 10, whereas the highest level was 76.91 % between St. 3 and St. 12. However, cluster 2, which includes only one station, reflects the unique ecological conditions at this station (oil effluents from Petropil Company). In contrast, the other clusters indicated that the included stations in each cluster have more or less

similar ecological conditions, depending on the degree of similarity.

Conclusion

The study area is considered as oligotrophic and healthy, despite land-base, human, and tourism activities, since the total counts of phytoplankton was low accompanied with low nutrient concentrations and high values of diversity. But due to the appearance of potentially harmful algae species even in low counts, make the region of the eastern coast susceptible to drastic effects at flourishing of these species during favorable conditions. Thus, monitoring continuously of this area is imperative, to follow probable bloom of these species, to predict negative effects resulting from increasing land-based activities in order to protect the eastern coast of Suez Gulf from any undesirable change there.

Open Access This article is distributed under the terms of the Creative Commons Attribution 4.0 International License (<http://creativecommons.org/licenses/by/4.0/>), which permits unrestricted use, distribution, and reproduction in any medium, provided you give appropriate credit to the original author(s) and the source, provide a link to the Creative Commons license, and indicate if changes were made.

References

- Al-Kandari, M., Al-Yamani, F., Al-Rifaie, K. (2009). Marine Phytoplankton Atlas of Kuwait's Waters. Kuwait Institute for Scientific Research, ISBN 99906-41-24-2. 351 pp.
- Al-Najjar, T., Badran, M. I., Richter, C., Meyerthofer, M., & Sommer, U. (2007). Seasonal dynamics of phytoplankton in the gulf of Aqaba, Red Sea. *Hydrobiologia*, 279, 69–83.
- American Public Health Association (APHA) (2005). Standard Methods for the Examination of Water & Wastewater, twenty first Ed. Washington.
- Bosak, S., Silović, T., Ljubesić, Z., Kuspilić, G., Pestorić, B., Krivokapić, S., & Damir Vilicić, D. (2012). Phytoplankton size structure and species composition as an indicator of trophic status in transitional ecosystems: the case study of a Mediterranean fjord-like karstic bay. *Oceanologia*, 54(2), 55–286. doi:10.5697/oc.54-2.255.
- Bourrelly, P. (1968). Les algues d' eau douce, initiation a la systematique. Tom II: Les algues Jaunes et Brunnes, Chrysophycées, Phaeophycées, et Xanthophycées. Ed. N. Boubée and Cie, Paris, 438 pp.
- Camargo, J. A., & Alonso, Á. (2006). Ecological and toxicological effects of inorganic nitrogen pollution in aquatic ecosystems: a global assessment. *Environment International*, 32, 831–849.
- Casteleyn, G., Chepurnov, V. A., Leliaert, F., Mann, D. G., Bates, S. S., Lundholm, N., Rhodes, L., Sabbe, K., & Vyverman, W. (2008). Pseudo-Nitzschia pungens (bacillariophyceae), a cosmopolitan diatom species? *Harmful Algae*, 7, 241–257.
- Chen, C. Y., & Durbin, E. G. (1994). Effects of pH on the growth and carbon uptake of marine phytoplankton. *Marine Ecology Progress Series*, 109, 83–94.
- Cloern, J. E., Powell, T. M., & Huzzley, L. M. (1989). Spatial and temporal variability in south Francisco Bay (USA). II. Temporal changes in salinity, suspended sediments, phytoplankton biomass and productivity over tidal time scales. *Estuarine Coastal Shelf Science*, 28, 599–613.
- Cupp, E. E. (1943). *Marine plankton diatoms of the west coast of North America*. Berkely and Los Angeles, California: University of California Press. 238 pp.
- Deyab, M. A., Khedr, A. A., & EL-Naggar, M. A. (2004). Phytoplankton distribution in relation to environmental factor along the Suez Canal and the Red Sea coast of Egypt. *Algological Studies*, 112, 123–140.
- Donnelly, A., Jones, M., O'Mahony, T., & Byrne, G. (2007). Selecting environmental indicator for use in strategic environmental assessment. *Journal of Environmental Impact Assessment*, 27(2), 161–175. doi:10.1016/j.eiar.2006.10.006.
- Eker, E., & Kideys, A. E. (2000). Weekly variations in phytoplankton structure of a harbor in Mersin Bay (north-eastern Mediterranean). *Turkish Journal of Botany*, 24, 13–24.
- El-Naggar, A. H., Osman, M. E. H., El-Sherif, Z. M., & Nassar, M. Z. (2002). Phytoplankton and seaweeds of the western coast of Suez Gulf (from Red Sea) in relation to some physico-chemical factors, oil and sewage pollution. *Bulletin of the Faculty of Science, Assiut University*, 31(1), 77–104.
- El-Sherif, Z. M., & Abo El-Ezz, S. (2000). Checklist of plankton of the northern Red Sea. *Pakistan Journal of Marine Science*, 9(1&2), 61–78.
- Fahmy, M. A. (2003). Water quality in the Red Sea coastal waters (Egypt): analysis of spatial and temporal variability. *Chemistry and Ecology*, 19(1), 67–77.
- Ferguson, W.E. J. (1968). Dinoflagellates of the Caribbean Sea and adjacent areas, Univ. of Miami press, Library of Congress Catalog card number, 68-9512, 141 pp.
- Friedly, J. D. (2001). The influence of species diversity on ecosystem productivity: how, where, why? *Oikos*, 93, 514–526.
- Gab-Alla, A. A. F. (2007). Is there any effect of hot springs on the marine benthic ecology at Hamam Pharaon, Gulf of Suez, Red Sea. *Egyptian Journal of Fisheries and Aquatic Science*, 2(4), 264–274.
- Gladstone, W., Curley, B., & Shokri, M. R. (2013). Environmental impacts of tourism in the gulf and the Red Sea. *Journal of Marine pollution Bulletin*, 72(2), 375–388. doi:10.1016/j.marpolbul.2012.09.017.
- Ghazzawi, F. M. (1939). A study of Suez Canal plankters: The Phytoplankton Hydrobiology and Fisheries, Direct notes and memories, 24, 83 pp.
- Ghobrani, M., Mirbagheri, S. A., HAassani, A. H., Nouri, J., & Monavari, S. M. (2014). Algal bloom in aquatic ecosystems—an overview. *Current World Environment*, 9(1), 105–108.
- Hinga, K. R. (2002). Effects of pH on coastal marine phytoplankton. *Marine Ecology Progress Series*, 238, 281–300.
- Huertas, I. E., Rouco, M., López-Rodas, V., & Costas, E. (2011). Warming will affect phytoplankton differently: evidence through a mechanistic approach. *Proceedings of the Royal Society B: Biological Sciences*, 278(1724), 3534–3543.

- Ignatiades, L., & Gotsis-Skretas, O. (2010). A review on toxic and harmful algae in Greek coastal waters (E. Mediterranean Sea). *Toxins*, 2,(5) 1019–1037. doi:10.3390/toxins2051019.
- Irigoién, X., Huisman, J., & Harris, R. P. (2004). Global biodiversity patterns of marine phytoplankton and zooplankton. *Nature*, 429, 863–867.
- Ismael, A. A. (2014). Coastal engineering and harmful algal blooms along Alexandria coast, Egypt. *Egyptian Journal of Aquatic Research*, 40, 125–131.
- Ji, R., Chen, C., Franks, P. J. S., Townsend, D. W., Durbin, E. G., Beardsley, R. C., Lough, R. G., & Houghton, R. W. (2006). Spring phytoplankton bloom and associated lower trophic level food web dynamics on Georges bank: 1-D and 2-D model studies. *Deep-Sea Research Part II*, 53(23–24), 2656–2683. doi:10.1016/j.dsr2.2006.08.008.
- Kemker, C. (2013). Dissolved Oxygen, Fundamentals of Environmental Measurements. Fondriest Environmental, Inc. 19 Nov. 2013. <http://www.fondriest.com/>
- Leterme, S. C., Seuront, L., & Edwards, M. (2006). Differential contribution of diatoms and dinoflagellates to phytoplankton biomass in the NE Atlantic Ocean and the North Sea. *Marine Ecology Progress Series*, 312, 57–65. doi:10.3354/meps312057.
- Leterme, S. C., Ellis, A. V., Mitchell, J. G., Buscot, M. J., Pollet, T., Schapira, M., & Seuront, L. (2010). Morphological flexibility of *Cocconeis placentula* (Bacillariophyceae) nanostructure to changing salinity levels. *Journal of Phycology*, 46(4), 715–719. doi:10.1111/j.1529-8817.2010.00850.x.
- Leterme, S. C., Prime, E., Mitchell, J.G., Brown, M.H. & Ellis, A.V. (2013). Diatom adaptability to environmental change: a case study of two *Cocconeis* species from high salinity areas. *Diatom Research*, 28(1), 29–35. doi:10.1080/0269249X.2012.734530.
- Leterme, S. C., Jendyk, J. G., Ellis, A. V., Brown, M. H., & Kildea, T. (2014). Annual phytoplankton dynamics in the gulf saint Vincent, south Australia, in 2011. *Oceanologia*, 56(4), 757–778.
- Levin, L. A., Boesch, D. F., Covich, A., Dahm, C., Erséus, C., Ewel, K. C., Kneib, R. T., Moldenke, A., Palmer, M. A., Snelgrove, P., Strayer, D., & Weslawski, J. M. (2001). The function of marine critical transition zones and the importance of sediment biodiversity. *Ecosystems*, 4(5), 430–451. doi:10.1007/s10021-001-0021-4.
- Madkour, F. F., El-Sherbiny, M. M., & Amer, M. A. (2010). Phytoplankton population along certain Egyptian coastal regions of the Red Sea. *Egyptian Journal of Aquatic Biology and Fisheries*, 14(2), 95–109.
- Malone, T. C. (2007). Ecosystem dynamics, harmful algal blooms and operational oceanography. 14.1. Oceanography and Stewardship of marine ecosystems, 527–560. <http://earthobservations.org/>
- Méndez, S., & Ferrari, G. (2002). Floraciones algales nocivas em Uruguai: antecedentes, proyectos en curso y revisión de resultados In Floraciones algales nocivas en el Cono Sur Americano (E.A. Sar, M.E. Ferrario & B. Reguera, eds). *Instituto Español de Oceanografía*, 271–288.
- Mizuno, T. (1990). *Illustrations of the freshwater plankton of Japan*. Japan: 9th Printing Hoikush Publishing Co. Lt. 353.
- Nassar, M. Z. (1994). Effect of oil pollution on the quantity and quality of phytoplankton in Suez Bay of the Red Sea. Master's Thesis, Faculty of Science, Tanta University.
- Nassar, M. Z. (2000). Ecophysiological studies on phytoplankton along the western coast of Suez Gulf. Philosophy Doctor Thesis, Faculty of Science, Tanta University.
- Nassar, M. Z. (2007a). Species composition and distribution of phytoplankton in the western coast of Suez Gulf, Egypt. *Egyptian Journal of Aquatic Research*, 33(2), 113–132.
- Nassar, M. Z. (2007b). Nutrients and phytoplankton distribution in the coastal waters of Aqaba Gulf, Red Sea, Egypt. *Egyptian Journal of Aquatic Research*, 33(2), 133–151.
- Nassar, M. Z., & Khairy, H. M. (2014). Checklist of phytoplankton species in the Egyptian waters of the Red Sea and some surrounding habitats (1990-2010). *Journal of Annual Research & Review in Biology*, 4(23), 3566–3585.
- Nassar, M. Z., Hamdy, R. M., Khiray, H. M., & Rashedy, S. H. (2014). Seasonal fluctuations of phytoplankton community and physico-chemical parameters of the north western part of the Red Sea, Egypt. *Egyptian Journal of Aquatic Research*, 40(4), 395–403.
- Nayar, S., Goh, B. P. L., & Chou, L. M. (2005). Environmental impacts of diesel fuel on bacteria and phytoplankton in a tropical estuary assessed using in situ mesocosms. *Ecotoxicology*, 14(3), 397–412.
- Nicholas, R. R., Pershing, A. J., & Jossi, J. W. (2010). Biodiversity as a dynamic variable in the gulf of Maine continuous plankton recorder transect. *Journal of Plankton Research*, 32(12), 1675–1684. doi:10.1093/plankt/fbq050. First published online: April 28, 2010.
- NPA (2003a). National Program of Action (NPA) for the protection of the marine environment from land-based activities within the Red Sea area in Egypt. Alexandria: Oceanography Department, Alexandria University.
- NPA (2003b). National Program of Action (NPA) for the protection of the marine environment from land-based activities within the Red Sea area in Egypt: review on pollution on Suez Canal, hurgada, and sharm El-sheikh areas. Ismailia: Marine Science Department, Suez Canal University.
- NPA (2003c). National Program of Action (NPA) for the protection of the marine environment from land-based activities within the Suez Area. NIOF, 2003
- Özman-Say, A. N., & Balkis, N. (2012). Phytoplankton assemblages in the coastal zone of the gulf of iskenderun-north eastern Mediterranean. *Pakistan Journal of Botany*, 44(5), 1785–1798.
- Paytan, A., & McLaughlin, K. (2007). The oceanic phosphorus cycle. *Chemical Reviews*, 107, 563–576.
- Peragallo, H. & Peragallo, M. (1908). Diatomees marines de France et des Districts Maritimes Voisions, I-III (text and plates). Paris and Grez Sur-loing, 1-491.
- Pourafrahyabi, M., & Ramezanpour, Z. (2014). Phytoplankton as bio-indicator of water quality in Sefid Rud River, Iran (south of Caspian Sea). *Caspian Journal of Environment Science*, 12(No.1), 31–40.
- Prescott, G. W. (1962). Algae of the western Great Lakes area. Brown, W. C., Dubuque (IOWA), 977 pp.
- Ramos, A. G., Martel, A., Codd, G. A., Soler, E., Coca, J., Redondo, A., Morrison, L. F., Metcalf, J. S., Ojeda, A., Suárez, S., & Petit, M. (2005). Bloom of the marine diazotrophic cyanobacterium *Trichodesmium erythraeum* in the northwest African upwelling. *Marine Ecology Progress Series*, 301, 303–305.

- Rimet, F., & Bouchez, A. (2012). Biomonitoring river diatoms: implications of taxonomic resolution. *Ecological Indicators*, 15(1), 92–99. doi:10.1016/j.ecolind.2011.09.014.
- Schabhüttl, S., Hingsamer, P., Weigelhofer, G., Hein, T., Weigert, A., & Striebe, M. (2012). Temperature and species richness effects in phytoplankton communities. *Oecologia*, 171(2), 527–536.
- Shams El-Din, N. G., Nassar, M. Z. & Abd El Rahmann, N. S. (2005). Surveillance studies on plankton in the northern part of the Red Sea during winter and summer, 2002. *Journal of Egyptian German Society of Zoology*. Vol. (48D): Invertebrate Zoology & Parasitology: 49-77.
- Shannon, C. E., & Weaver, W. (1963). *The mathematical theory of communications*, Univ. Urbana: Illinois. 117.
- Sournia, A. (1986). Atlas Du Phytoplankton Marin, Volume 1: Introduction, Cyanophyceés, Dictyochophyceés, Dinophyceés et Radiophyceés, 21 pp.
- Strickland, J. D. H., & Parsons, T. R. (1972). A manual of sea water analysis: Canada Fisheries Research Board. *Bulletin*, 167, 310.
- Tait, R. V. (1981). *Elements of Marine Ecology*. London: Butterworths. 272 pp.
- Taş, S. (2013). Phytoplankton composition and abundance in the coastal waters of the Datça and Bozburun Peninsulas, south-eastern Aegean Sea (Turkey). *Mediterranean Marine Science*, 15(1), 84–94. doi:10.12681/mms.418.
- Taylor, F. J. R. (1987). *The Biology of Dinoflagellates*. Botanical Monographs. Oxford: Blackwell Scientific Publications. 785.
- TEAM, (2000). Gulf of Aqaba Environmental Action Plan. European Union – Taba-Eilat-Aqaba-Macro Area (TEAM) Project, Rural Development, Water and Environment Department – Middle East and North Africa Region, November 2000.
- Tilman, D. (1999). The ecological consequences of changes in biodiversity: a search for general principles. *Ecology*, 80, 1455–1474.
- Tilstone, G., Airs, R., Martinez-Vicente, V., Widdicombe, C., & Llewellyn, C. (2010). High concentrations of mycosporine like amino acids and colored dissolved organic matter in the sea surface microlayer off the Iberian Peninsula. *Journal of Limnology and Oceanography*, 55, 1835–50.
- Twomey, L. J., Piehler, M. F., & Paerl, H. W. (2005). Phytoplankton uptake of ammonium, nitrate and urea in the Neuse River Estuary, NC, USA. *Hydrobiologia*, 533, 123–134.
- Utermöhl, H. (1958). Zur Vervollkommnung der quantitative Phytoplankton-Methodik. *Mitteilungen internationale Vereinigung für theoretische und angewandte Limnologie*, 9, 1–38.
- Van Dolah, F. M. (2000). Marine algal toxins: origins, health effects, and their increased occurrence. *Environmental Health Perspectives*, 108(1), 133–141.
- Whilm, J. L., & Doris, T. C. (1966). Species diversity of benthic invertebrates in a stream receiving domestic and oil refinery effluents. *American Midland Naturalist*, 76(2), 427–449.